

Fort Hays State University

## FHSU Scholars Repository

---

Buildings & Facilities

Campus History Collections

---

4-25-1947

### Documents from Virginia Maranville Recital

Fort Hays Kansas State College

Follow this and additional works at: <https://scholars.fhsu.edu/buildings>

---

#### Recommended Citation

Fort Hays Kansas State College, "Documents from Virginia Maranville Recital" (1947). *Buildings & Facilities*. 978.

<https://scholars.fhsu.edu/buildings/978>

This Document is brought to you for free and open access by the Campus History Collections at FHSU Scholars Repository. It has been accepted for inclusion in Buildings & Facilities by an authorized administrator of FHSU Scholars Repository. For more information, please contact [ScholarsRepository@fhsu.edu](mailto:ScholarsRepository@fhsu.edu).

Fort Hays Kansas State College

Nº 5715

*Memorial Union*

*Bldg. Fund*.....Hays, Kansas,.....*4-25-*19*47*

Received of.....*Benefit Concert - Meraville* \$ *118<sup>00</sup>*

For.....*Memorial Union Bldg. - Alumni Project*

By.....*Nita M. Landrum*  
*by H.O.*



21-3882

6-46-1650 Sets

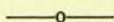
*98608-14(2)*

::: FORT HAYS KANSAS STATE COLLEGE :::

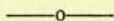
BENEFIT RECITAL  
MEMORIAL UNION BUILDING FUND

VIRGINIA MARANVILLE  
*Coloratura Soprano*

assisted by  
GAILLERD MATTSON, Accompanist



PICKEN AUDITORIUM  
TUESDAY EVENING, APRIL 22, 1947  
EIGHT-FIFTEEN O'CLOCK



P R O G R A M

I

O Mio Babbino Caro (from Gianni Schicchi) - - Puccini  
Caro Nome (from Rigoletto) - - - - - Verdi

II

Do Not Go My Love - - - - - Hageman  
At the Well - - - - - Hageman  
Spirit Flower - - - - - Campbell-Tipton  
Blue Danube Waltz - - - - - Strauss

III

Andante, Spinato and Grande Polonaise  
Brillante, Op. 22 - - - - - Chopin  
Mr. Mattson

IV

Theme and Variations - - - - - Proch  
Musical Snuff Box - - - - - Liadoff

V

Exultation - - - - - McFeeters  
Clouds - - - - - Charles  
Moon Marketing - - - - - Weaver  
Two Little Shoes - - - - - Manna-Zucca  
Birthday - - - - - Woodman

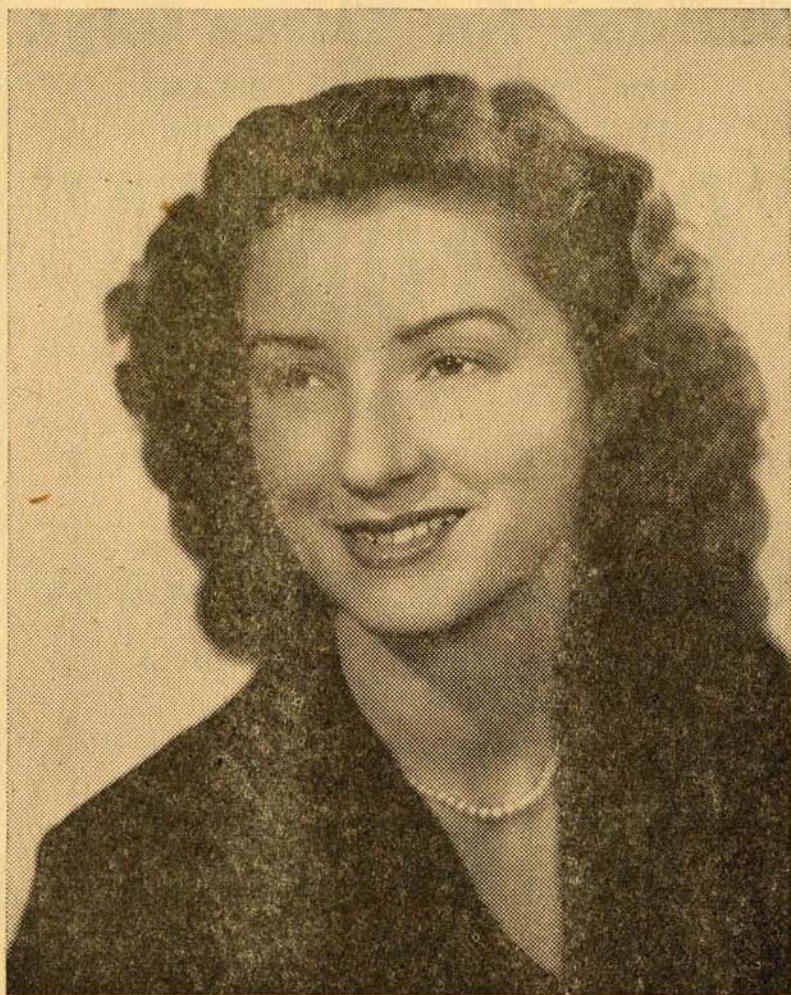


# STATE COLLEGE

VOLUME XXXX

FORT HAYS KANSAS

## To Present Union Building Benefit Recital



Miss Virginia Maranville, talented Wichita coloratura soprano, will present a recital in Picken auditorium on Tuesday evening, April 22 at 8:15 o'clock, for the benefit of the Memorial Union Building fund. The recital is sponsored by local alumni with the assistance of Sigma Alpha Iota sorority and Phi Mu fraternity. Tickets are 60 cents, including tax, and are being sold by fraternity and sorority groups and in the alumni office.

Miss Maranville graduated from Fort Hays State in 1942 with a major in music. She made her debut in Wichita on Sunday afternoon, March

20. She has been a student of Mrs. Lester A. Heckard for the past three years and during a recent national Atwater Kent competition held in Los Angeles she was chosen as a semi-finalist from a group of 1500.

Critics present at Miss Maranville's recital in Wichita, commended on her extraordinary tone pitch, compared her voice to the early voice of Gall. Curci, and predicted her early entrance into top concert positions.

Everyone is invited to have the privilege of attending. Don't forget the date. It is for the benefit of the Memorial Union Building fund.



VIRGINIA MARANVILLE WILL PRESENT BENEFIT RECITAL  
MEMORIAL UNION BUILDING FUND WILL RECEIVE PROCEEDS FROM RECITAL

Tuesday April 22, 1947

Miss Virginia Maranville, talented Wichita coloratura soprano, will present a recital in Picken Hall on Tuesday, April 22nd, for the benefit of the Memorial Union Building Fund. The recital is sponsored by local alumni with the assistance of Sigma Alpha Iota Sorority and Phi Mu Alpha Fraternity. Tickets are 60¢, including tax, and will be sold by fraternity and sorority groups and in the alumni office.

Miss Maranville graduated from Fort Hays State in 1942 with a major in music. She made her debut in Wichita, on Sunday afternoon, March 20th. She has been a student of Mrs. Lester A. Heckard for the past three years and during a recent national Atwater Kent competition held in Los Angeles she was chosen as a semi-finalist from a group of 1500.

Critics present at Miss Maranville's recital in Wichita, commented on her extraordinary tone pitch, compared her voice to the early voice of Galli Curci, and predicted her early entrance into top concert positions.

This is a recital well worth hearing. We want everyone to have the privilege of attending. Don't forget the date. It is a benefit for the Memorial Union Building Fund.

Sponsor  
--Alumni Association

Basgall, Mary Alice (Theta Sigma Upsilon)  
Tickets 361-400

*600*  
*540*  
*60*  
*360*  
*60*  
*8*  
*480*  
*14*  
*60*  
*8.40*  
*26*  
*40*  
*14*  
*60*  
*8.40*  
*35 returned*  
*5 sold*  
*60*  
*3.00*  
*30 returned*  
*30 sold*  
*30*  
*60*  
*18.00*  
*5@60 = 3.00*  
*Returned 39*  
*Sold 17*  
*56*  
*Returned only 641-660*  
*601-620*  
*19 ret'd*  
*1 sold 60*  
*Returned 481-488*  
*Returned 12*  
*110*  
*12@60*  
*28*  
*501-505 sold - (returned 506-520)*  
*5@60*  
*3.00*  
*Returned 346-360*  
*Sold 341-345*  
*17*  
*10.20*  
*7.20*

~~Chittenden, Mrs. Herb (Alpha Sigma Alpha Alumnae)~~  
Tickets 521-540

*none*

Denison, Mrs. Dorothy (Delta Sigma Epsilon)  
Tickets 321-360

Dickenson, Russell (Phi Mu Alpha)  
Tickets 541-600

Felten, Lucille  
Tickets 721-740

Garrett, Harley (YMCA)  
Tickets 661-720

McCarroll, Miss Rosella (YWCA)  
Tickets 601-660

~~Meckel, Mrs. Vernon (Theta Sigma Upsilon Alumnae)~~  
Tickets 421-440

~~Meckel, Vernon (Music Store)~~  
Tickets 441-480

Meckel, Mrs. Vivian (SAI Alumnae)  
Tickets 481-500

Meyer, Eleanor (Alpha Sigma Alpha)  
Tickets 281-320

Moss, Mrs. Joel (Delta Sigma Epsilon Alumnae)  
Tickets 501-520

Nuss, Mr. Hubert (Sigma Tau Gamma)  
Tickets 201-240

Proctor, Mrs. Alvin (Faculty Wives)  
Tickets 241-260

Rahjes, Clara (Tri Sig)  
Tickets 401-420



Welty, Mrs. June (SAI)  
Tickets 1-40

4 returned \$16.20  
27 sold  
31

6 tickets  
to come in yet  
Sold 3 \$1.80

Welty, Richard (Phi Sig)  
Tickets 41-196

25 tickets - 150.  
41  
155  
126 tickets turned in  
151

4 tickets  
to come in yet

50

~~49~~, 50 - ~~55~~ 56 - 71 - ~~77~~, ~~78~~ -

87, 88, 89 - ~~90~~, ~~91~~, ~~93~~, 97, ~~105~~, ~~106~~

113, 114, 115, 116, ~~120~~, 125, 126, 127, 128

~~130~~, - ~~136~~, ~~137~~, ~~138~~, ~~139~~, ~~141~~

145, 146, 147, 148, 149, ~~150~~, ~~151~~, 152, ~~158~~

165, 166, 167, 168. - 189, 190, ~~191~~

~~192~~

26.



April 28, 1947

Miss Virginia Maranville  
237 S. Old Manor Road  
Wichita, Kansas

Dear Virginia:

I am enclosing a check for \$59.00 and a reconciliation statement which shows the disposition of the money received from the concert. We wish it could have been more.

We have heard nice things from everyone, and we do appreciate having you and Mr. Mattson give us this concert in Hays. Perhaps you can come again sometime and we will do our best to have a nice crowd for you. I had hopes of a much larger attendance at this recital, but knowing the limitations on crowds at concerts in Hays I wasn't at all surprised. I hope you weren't disappointed.

I am returning the photos that I have. I tried to get the one I sent to Russell for the cut, but as yet I have not heard from them. I am sending the cut, and if and when I get the other photo I will send it on to you.

Sincere good wishes,

Mrs. Nita M. Landrum  
Executive Secretary  
Alumni Association

NML:lo

Nº 6646

# FEE RECEIPT

HAYS, KANSAS,

Month	Day	Year
4	25	47

RECEIVED FROM

*Lois Ozenberger*

Dollars,

in payment for

*Twenty - six and 40/100*

*Des. tax 24.00*  
*St. tax 2.40*

FORT HAYS KANSAS STATE COLLEGE

By

*J. Macey*  
*by E.D.*

Cashier.

20-3215

6-44-2500 Sets



Dollars	Cts.
26	40

MEMORIAL UNION BUILDING BENEFIT RECITAL - MARANVILLE

April 22, 1947

240 Tickets Sold at \$ .60 each	\$144.00
Cash Over	<u>.40</u>
Total Cash Received for Concert	144.40
Less: Federal Tax \$24.00	
State Tax <u>2.40</u>	<u>26.40</u>
Net Receipts	\$ 118.00
50% Guarantee to V. Maranville	<u>59.00</u>
Balance for Memorial Union Bldg.	\$ 59.00



Date April 25, 1947

RECONCILIATION

Tickets	Received	Returned	Sold
Adult	_____	_____	_____
High School	_____	_____	_____
Children	_____	_____	_____
Complimentary	_____	_____	_____
Activity	_____	_____	_____
<u>240</u> Adults @ <u>\$ .60</u>	_____		
_____ High School @ _____	_____		
_____ Children @ _____	_____		
_____ Complimentary (Tax Only) @ _____	_____		
_____ Activity @ _____	_____		
Value of Tickets Sold			<u>\$144.00</u>
Total Cash returned			<u>144.40</u>
Less advance for change			_____
Cash received for ticket sales			<u>\$144.40</u>

Federal Tax \$24.00

State Tax \$ 2.40

  
Financial Secretary