

Fort Hays State University

FHSU Scholars Repository

Athletic Programs Collection

Archives Online

11-1-1992

Fort Hays State Basketball 1992-93 Media Guide

Fort Hays State University

Follow this and additional works at: https://scholars.fhsu.edu/athletic_programs

Recommended Citation

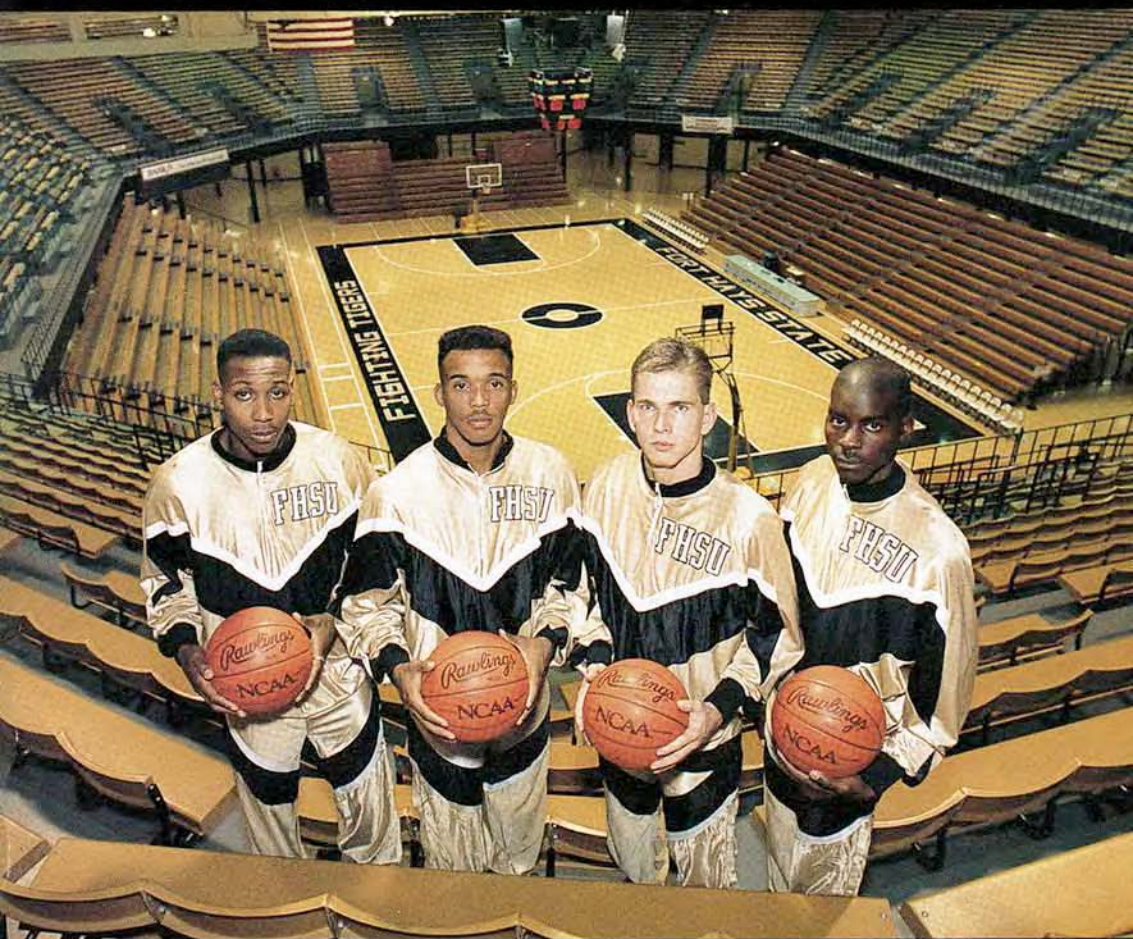
Fort Hays State University, "Fort Hays State Basketball 1992-93 Media Guide" (1992). *Athletic Programs Collection*. 300.

https://scholars.fhsu.edu/athletic_programs/300

This Document is brought to you for free and open access by the Archives Online at FHSU Scholars Repository. It has been accepted for inclusion in Athletic Programs Collection by an authorized administrator of FHSU Scholars Repository.

FORT HAYS STATE

Tiger Basketball



1992-93 Media Guide

Gross Memorial Coliseum



Gross Memorial Coliseum is the home of the Fort Hays State "Fighting Tigers". The 7,000-seat arena was finished in August of 1973 at a cost of seven million dollars. The Tigers made the move across campus from Sheridan Coliseum which seated 2,000. Paul "Busch" Gross is the namesake of the Coliseum. Gross coached basketball at FHSU from 1930 to 1946 and totaled 150 wins and 88 losses in 14 seasons. GMC received a new 1/8 inch layer of Proturf in October of 1988 to replenish the cracked and discolored surface after 15 years.

In the first game ever played at Gross Memorial Coliseum on November 30, 1973, FHSU defeated East Central State (OK) University, 74-68. Chuck Brehm coached the first team to play at GMC and his squad won 11 of 14 home contests that year. Also in that historical first game, Greg Standish scored a game high 20 points and pulled down nine rebounds.

M.C. Cunningham Hall is part of the total Health, Physical Education and Recreation/Athletic complex at Fort Hays State. Cunningham Hall houses HPER offices, classrooms, a swimming pool, four full-sized gymnasiums, eight handball/racquetball courts, a weight room, two dance studios, a wrestling room and the Ed McNeil Gymnastics Room.

Gross Memorial Coliseum is a multi-purpose facility that hosts concerts (seating for 10,000), the KSHSAA State 1A Basketball Tournament, the KSHSAA State 1A-2A-3A Wrestling Championships and indoor meets including the Alex Francis Invitational. The Coliseum houses the FHSU athletic offices, a large athletic training room, locker rooms, concession stands, a press box and the newest addition is the Fields Weight Room which features full nautilus equipment, free weights, mirrors and a full-time supervisor.

GROSS MEMORIAL COLISEUM FACTS

Largest single game crowd
7,300 vs Washburn (2-2-85)

Most points scored by a Tiger
42 by Mike Pauls vs Hastings College (1-23-79)

FHSU's RECORD IN THE COLISEUM

Year	GMC Record	Pct.
1973-74	11-3	.786
1974-75	10-3	.769
1975-76	10-1	.909
1976-77	6-5	.545
1977-78	5-6	.455
1978-79	13-5	.722
1979-80	16-3	.842
1980-81	20-1	.952
1981-82	4-10	.400
1982-83	15-1	.938
1983-84	18-1	.947
1984-85	15-2	.882
1985-86	20-1	.952
1986-87	17-1	.944
1987-88	18-1	.947
1988-89	14-1	.933
1989-90	12-4	.750
1990-91	12-3	.800
1991-92	13-1	.928
19-YEARS	249-53	.825

Fort Hays State University Media Guide



Table of Contents

Assistant Coaches	6
Coaching Records	7
Fort Hays State University	25
Garner, Head Basketball Coach	5
Gross Memorial Coliseum	IFC
Hammond, President	4
Honor Roll	40
Media Information	1
Media Outlets	IBC
Opponents Information	30-37
Outlook '92-93	2-3
Phone Numbers	1
Player Profiles	8-21
Quick Facts	1
Records, FHSU	38-39
Results, 1991-92	27
Rocky Mountain Athletic Conference, 1991-92	29
Roster, Alphabetical, Numerical	24
Schedule, 1992-93	BC
Series Record vs All Opponents	22
Spicer, Director of Athletics	4
Statistics, 1991-92	26-28
Table of Contents	1
Top Ten Scoring	23
Year-By-Year Scores	41-48

On the Cover

Left to Right: Tiger seniors Bryant Basemore, Darrell Hudson, Cedric Drewes and Ray Johnson

MEDIA INFORMATION

CREDENTIALS... Requests for credentials for Fort Hays State home games should be made at least one week prior to the game. Credentials will be limited to working press, radio, television and visiting information directors, and may be obtained through the FHSU Sports Information Office.

INTERVIEWS... All requests for interviews with players and coaches must be channeled through the Sports Information Office. Post-game interviews with Coach Garner can be conducted following a 10 minute cooling off period outside the Tiger locker room. Player contact can be arranged after the game outside the locker room.

GAME SERVICES... Programs and the latest statistical information will be available in the press box prior to all contests. Halftime statistics, play-by-play, and final statistical booklets will be distributed to the media during halftime and approximately 10 minutes after each game.

Credits... The 1992-93 Fort Hays State University Basketball Media Guide was designed and written by Jack Kuestermeyer, FHSU Sports Information Director. Cover shot by Tom Ellison, Ellis. Photography by Jack Jackson and student assistants at FHSU photo services.

FHSU Quick Facts

Location	Hays, KS
Mailing Address	Fort Hays State University
.....	Athletic Department
.....	600 Park Street
.....	Hays, KS 67601
Enrollment	5,700
Founded	1902
President	Dr. Edward H. Hammond
Director of Athletics	Tom Spicer
Head Basketball Coach	Gary Garner
Assistant Coach	Chad Wintz
Assistant Coach	Mike Rohn
Athletic Conference	Rocky Mountain Athletic
Nickname	Tigers
Colors	Black & Gold

FHSU Athletic Phone Numbers

Athletic Office Phone Number	(913) 628-4050
Head Basketball Coach	Gary Garner
Phone Number (office)	(913) 628-4355
(home)	(913) 625-6873
Assistant Coach	Chad Wintz
Phone Number (office)	(913) 628-4356
(home)	(913) 625-7042
Sports Information Director	Jack Kuestermeyer
Phone Number (office)	(913) 628-5903
(home)	(913) 625-9792
GMC Press Box Phone	(913) 628-5800

1992-93 Tiger Outlook



The Fort Hays State University Tiger basketball team won the Rocky Mountain Athletic Conference title last season under first year head coach Gary Garner. The conference title was the first for a Tiger squad since 1985. The Black & Gold posted an 18-10 overall mark and were 10-2 in the RMAC. Garner was named RMAC Coach of the Year for his teams efforts a year ago. A 15 win season would push the FHSU basketball team to 1,000 wins in the history of the school.

Competing for the first time in the National Collegiate Athletic Association Division II last season the team failed to make post-season play. Last year's squad graduated six seniors and Garner spent the off-season recruiting their replacements. Nine new faces join the '92-93 team and will need to fill key starting and reserve roles in their first season at FHSU.

Garner's '92-93 squad is looking to repeat as conference champions and make the schools first trip into the NCAA playoffs.

GUARDS

Graduation decimated the Tiger backcourt. Gone are starting guards Damian Evans and Mark Willey along with key reserve Jay Sawyer. Evans was a first team All-RMAC performer and Willey was chosen to the second team.

Two freshmen will share the point guard duties, Chad Creamer and Matt Garner. Creamer, 5-10, earned All-Area and All-State honors last season playing for Thomas More-Prep Marian High School, Hays, KS. As a senior Creamer averaged 23.0 points and six assists per contest. Garner followed his father the head coach from Des Moines, IA. As a senior at Valley High School, Garner averaged 10.0 points and six assists to earn honorable mention All-Conference honors.

The shooting guard spot will be filled by either Allen Craft or Swede Trenkle. Craft transferred to FHSU from Columbia State Community College, Columbia, TN. As a sophomore Craft, 6-4, averaged 23.6 points and 7.9 rebound per contest. He was named to the National Junior College Athletic



1992-93 Tiger Outlook

Association All-Region VII and NJCAA All-Tennessee teams last season. Trenkle comes to FHSU after two seasons at the University of Idaho. He saw limited playing time with the Vandals. As a high school senior he averaged 24.0 points per game and earned honorable mention All-America recognition.

FRONT COURT

Seniors Bryant Basemore and Darrell Hudson are returning starters at forward. Basemore, 6-7, averaged 13.9 points and 6.6 rebounds as a junior. The West Memphis, AR, native garnered first team All-RMAC honors last season. As a junior Hudson scored 10.6 points per outing. Seniors Cedric Drewes and Ray Johnson return to add depth to the Tiger frontcourt. Drewes started seven of the 26 games he played in as a junior.

Junior college transfers Chris Henson and Eric Johnson should play key reserve roles at the forward spot. Henson, 6-6, played at Chaffey College, Rancho Cucamonga, CA, for two seasons prior to transferring to FHSU. As a freshman he was named the conference defensive Player of the Year and was an All-Conference performer both seasons. Henson can also play the center spot. Johnson came to FHSU along with Craft from Columbia State CC. He averaged 10.7 points and 6.1 rebounds as a sophomore.

Thomas More-Prep Marian High School, Hays, KS, product Toby Kuhn started the final eight games of the '91-92 season at center. After a solid finish last season Kuhn will vie for the starting position again this year, along with State Fair Community College, Sedalia, MO, transfer Radford Rainey. Rainey, 6-6, averaged 11.4 points and 5.1 rebounds as a sophomore.



A CAPSULE LOOK

1991-92 Record: 18-10 overall, 10-2 RMAC

Head Coach: Gary Garner (University of Missouri '65)

FHSU: 18-10 (One year)

Overall: 128-129 (Nine years)

Assistant Coaches: Chad Wintz (Kansas '87)

Mike Rohn (McPherson '89)

Starters Returning(3): F-Bryant Basemore, F-Darrell Hudson, C-Toby Kuhn

Starters Lost(2): G-Damian Evans, G-Mark Willey

Lettermen Returning: 5

Lettermen Lost: 6

Top Newcomers: G-Chad Creamer, G-Matt Garner, G/F-Allen Craft, G-Swede Trenkle, F-Chris Henson, F-Eric Johnson, F/C-Radford Rainey

Dr. Edward H. Hammond - President

Dr. Edward H. Hammond, 48, is the eighth President of Fort Hays State University. President Hammond, a man of boundless enthusiasm and energy, whose style is upbeat and progressive, was born in McAllen, Texas, but reared in the Kansas City, Kansas, area.

Prior to his current post, President Hammond gained education experiences and shared his expertise at the University of Louisville, Seton Hall University, Southern Illinois University, Purdue University, and the University of Missouri-Columbia. The President holds a bachelor's and master's degree from Emporia State University and the Ph.D. from the University of Missouri-Columbia.



President Hammond has been extremely active since assuming the leadership of the University in the summer of 1987. He laid the groundwork for the Western Kansas Educational Compact, a cooperative educational initiative between FHSU and the community colleges in Western Kansas; has watched his dream to totally computerize the campus become a reality; created a Western Kansas Coalition, an organization comprised of business and community leaders from 57 Western Kansas counties; helped to establish scholarship programs for potential minority school teachers at Garden City and Liberal; has played a major role in furthering economic development in Hays and Western Kansas; and introduced a voice mail system that vaulted the foreign language efforts of FHSU into an elite class. He saw the completion of the Beach/Schmidt Performing Arts Center for the cultural development of the area and launched the expansion of Sternberg Museum to a new location on Interstate 70. He obtained federal and state funding for a new \$20 million science building and initiated a \$20 million Capital Campaign to raise private monies for the enhancement of other FHSU projects.

President Hammond has published widely and is in demand nationally as an education consultant because of his expertise in risk management, staff and institutional liability, sexual harassment, and alcohol education issues.

The Hammond family includes wife Viv (Hammeke), formerly of Ellinwood, daughters Kelly and Julie and son Lance.

Tom Spicer - Director of Athletics

When Tom Spicer was named to the director of athletics post at Fort Hays State University on July 27, 1989, he said it was something he had dreamed about for quite some time. Spicer is starting his fourth year as director of athletics and has emphasized a return to athletic and academic excellence.

A native of Beaver, OK, Spicer attended secondary schools in Hays. He is a graduate of Hays High School and earned a bachelor of science degree from Fort Hays State in 1972. He played varsity football for the Tigers in his collegiate days. Spicer also received his master of science degree from FHSU in 1977. He is completing a specialist in education degree with work at both Southeastern Oklahoma State University and The Wichita State University.



Spicer made the move from director of athletics and dean of student affairs at Butler County Community College in El Dorado back to FHSU. "I look at this as a good, professional move," Spicer said at the announcement of his appointment at FHSU. "I will have an excellent opportunity to share my knowledge and experiences and will gain some new experiences at a quality, four-year institution. Everyone in the midwest knows that Fort Hays State University is a great school."

The 41-year-old Spicer also has experience as director of athletics, physical education instructor and head football and track coach for the Durant, OK, School District.

Previous to his work in Oklahoma, he taught and coached at Salina South High School, at Bishop Miege High School in Shawnee Mission and at Schlagle High School in Kansas City, KS.

Spicer is married to the former Kathy McGovern of Colorado Springs, CO. She received a bachelor of arts degree in sociology from Fort Hays State in 1972. The Spicers have four children: Matt, Amber, Kristen and Allison.

Gary Garner Head Basketball Coach



In his first season as head coach at Fort Hays State University, Gary Garner led the Tigers to the Rocky Mountain Athletic Conference title. The conference title was the first for a Black & Gold squad since 1985. Garner had been out of coaching for two years prior to being

named the 12th men's basketball coach at Fort Hays State University on April 16, 1991. The Tiger head man inherited a program that has perennially been a winner.

Garner takes FHSU into a new era of NCAA Division II basketball. He is no stranger to the NCAA with seven years of experience at Drake University which competes on the Division I level. Garner took the Bulldogs to the National Invitational Tournament in 1986 in a season that Drake compiled a 19-11 record.

During his two years away from coaching, Garner remained active in basketball as a color analyst for Iowa State University television games. He also worked in the real estate business.

The West Plains, MO native earned a scholarship to the University of Missouri following a stellar prep career where he was named a first team all-state guard. Garner was a three-year varsity letter winner at Missouri. As a senior captain he averaged 15 points a game earning second team all-conference honors as the Tigers placed third in the Big Eight.

Following his playing days at Mizzou, Garner stayed on from 1965-67 as a graduate assistant coach in basketball. He coached at Kemper Military Academy in Boonville, MO (1967-71) and later was head coach and athletic director at Trenton Junior College in Trenton, MO. At Trenton, from 1971-76, Garner's team compiled a mark of 95-42, including a best mark of 22-7 in 1973-74.

He left the junior college ranks for a one

year stint at Missouri Southern State College where he coached against FHSU in the now defunct Central States Intercollegiate Conference. The Lions posted a 15-1 record at Missouri Southern under Garner.

He then returned to Missouri to serve as an assistant with Norm Stewart. While Garner was on the staff at Mizzou that school won two Big Eight titles and three times advanced to the NCAA post-season tournament. Garner is credited with recruiting such standout players as Steve Stipanovich and Jon Sunvold who led the Tigers to four straight conference titles, two of which followed his departure for Drake.

Highlights of Garner's career at Drake include the NIT berth in 1986, DU's first post-season berth since 1981 and only third in 20 years. He was named the Missouri Valley Conference Coach of the Year in 1981-82 and runner-up for the same honor in 1986. In his first season at Drake, Garner's squad led the MVC in scoring defense. The Bulldogs again led the league in scoring defense in 1985-86 while also posting the best numbers in points scored per game. Garner left DU as the school's third winningest coach all-time with 95 victories.

Garner, 49, and his wife Barbara are the parents of two boys, Matt and Jon.



The Garner File

Personal

NAME: Gary Garner
BORN: September 12, 1943
WIFE: Barbara
CHILDREN: Matt - 19
 Jon - 15
HOMETOWN: West Plains, MO
EDUCATION:
 University of Missouri
 B.S. Physical Education, 1965
 Northeast Missouri State Univ.
 M.S. Physical Education, 1973

Record at Four-Year Colleges

<u>School</u>	<u>Year</u>	<u>Record</u>	<u>Pct.</u>
Missouri Southern State Coll.	1976-77	15-15	.500
Drake University	1981-82	12-15	.444
Drake University	1982-83	13-15	.464
Drake University	1983-84	8-20	.286
Drake University	1984-85	12-15	.444
Drake University	1985-86	19-11	.633
Drake University	1986-87	17-14	.548
Drake University	1987-88	14-14	.500
Fort Hays State University	1991-92	18-10	.643
Totals	9 years	128-129	.498

Chad Wintz Assistant Basketball Coach

Chad Wintz returns for his third season on the Fort Hays State basketball staff. Wintz has a diverse basketball resume with a total of nine years as a collegiate player and coach.

Wintz is a native of Colby and has held basketball coaching positions at the University of Kansas, Wichita State University and Colby Community College. He has learned from a pair of the nations most respected coaches in Larry Brown during his tenure at Kansas and Eddie Fogler, formerly at Wichita State.

He played junior college basketball and golf at Butler County Community College in El Dorado. Wintz went on to finish his undergraduate education at the University of Kansas where he completed a Bachelor of General Studies in 1987. He was a member of the KU basketball squad and staff from 1984-87.

Wintz earned a Master's degree in Sports Administration from Wichita State in May of 1990. He served as an assistant coach during the 1989-90 season at Colby Community College in his hometown.

The camp circuit has been a regular part of Wintz's summers with Dean Smith's North Carolina Basketball School, Larry Brown's University of Kansas Basketball School, the Northwest Kansas Area Basketball Camp and Kansas All-Star Basketball Camp on his list of stops.

Wintz has responsibilities in almost all areas of the basketball program under head coach Gary Garner. He is vital in the recruitment of student-athletes and holds various other office duties.

Wintz, 27, is single.



Mike Rohn Graduate Assistant

Mike Rohn enters his second year as a member of the Tiger coaching staff. Rohn is completing work on a master's degree in physical education at FHSU.

He has held coaching jobs as an assistant at Colby Community College in 1990-91 and as head junior varsity coach at McPherson College in 1989-90.

Rohn was an All-Kansas Collegiate Athletic Conference performer two years (1987-88 & 1988-89) at McPherson. He also earned KCAC Player of the Year (1988-89) and Newcomer of the Year (1987-88) honors during his two-year stint at MC. Rohn earned a Bachelor of Science degree in physical education from McPherson in 1989.

He also played two seasons of juco basketball at Dodge City Community College. Rohn is also a native of Colby. He is 26 and single.



Jeff Moss Student Assistant Coach

Jeff Moss will again serve as a student assistant for the Tigers in 1992-93. Moss decided to forgo his last season of eligibility in 1991-92 to gain experience as a coach. He is a senior majoring in physical education.

Moss played two seasons for the Tigers after a standout prep career at Miltonvale High School where he averaged 24 points and 10 rebounds as a senior. He earned a FHSU letter following the 1989-90 season with appearances in 15 games.

Moss will lend a hand in all aspects of coaching for the Black & Gold.



All Time Coaching Records

Year-by-Year Records

NOTE: Some basketball was played at Fort Hays State prior to the years listed below. These games were largely with high school and "town" teams. The first complete season records are listed on this page.

Season	Coach	Won	Lost	Pct
1916-17	W.G. Speer	10	7	.588
1917-18	W.G. Speer	6	1	.857
1918-19	W.G. Speer	10	3	.769
1919-20	A.J. Robertson	6	9	.400
1920-21	George Woodward	6	12	.333
1921-22	George Woodward	3	11	.214
1922-23	George Woodward	5	10	.333
1923-24	Frank Mandeville	5	10	.333
1924-25	Frank Mandeville	10	5	.667
1925-26	Frank Mandeville	8	9	.471
1926-27	Frank Mandeville	7	10	.412
1927-28	Harold Schmidt	4	10	.286
1928-29	Harold Schmidt	4	8	.333
1929-30	Harold Schmidt	4	12	.250
1930-31	Paul B. Gross	10	9	.526
1931-32	Paul B. Gross	14	4	.778
1932-33	Paul B. Gross	8	8	.500
1933-34	Paul B. Gross	10	6	.625
1934-35	Paul B. Gross	9	7	.563
1935-36	Paul B. Gross	15	6	.714
1936-37	Paul B. Gross	14	4	.778
1937-38	Paul B. Gross	12	5	.706
1938-39	Paul B. Gross	6	11	.353
1939-40	Paul B. Gross	11	4	.733
1940-41	Paul B. Gross	9	6	.600
1941-42	Paul B. Gross	9	7	.563
1942-43	Paul B. Gross	14	3	.824
1943-45	No teams fielded for two seasons due to World War II			
1945-46	Paul B. Gross	9	8	.529
1946-47	Cade Suran	11	8	.579
1947-48	Cade Suran	14	6	.700
1948-49	Cade Suran	17	6	.739
1949-50	Cade Suran	19	8	.704
1950-51	Cade Suran	10	11	.476
1951-52	Cade Suran	17	6	.739
1952-53	Cade Suran	15	7	.682
1953-54	Cade Suran	11	10	.524
1954-55	Cade Suran	16	4	.800
1955-56	Cade Suran	9	12	.429
1956-57	Cade Suran	11	9	.550
1957-58	*Paul B. Gross/Wayne McConnell	6	13	.462
1958-59	Cade Suran	23	4	.852
1959-60	Cade Suran	15	6	.714

1960-61	Cade Suran	11	8	.579
1961-62	Cade Suran	19	4	.826
1962-63	Cade Suran	21	7	.750
1963-64	Cade Suran	10	9	.526
1964-65	Cade Suran	9	13	.409
1965-66	Charles G. Brehm	11	10	.524
1966-67	Charles G. Brehm	8	13	.381
1967-68	Charles G. Brehm	10	11	.476
1968-69	Charles G. Brehm	9	13	.409
1969-70	Charles G. Brehm	14	9	.609
1970-71	Charles G. Brehm	15	11	.577
1971-72	Charles G. Brehm	13	11	.542
1972-73	Charles G. Brehm	9	15	.375
1973-74	Charles G. Brehm	14	9	.609
1974-75	Charles G. Brehm	12	13	.480
1975-76	Charles G. Brehm	19	9	.679
1976-77	Charles G. Brehm	10	17	.370
1977-78	Joe Rosado	11	18	.579
1978-79	Joe Rosado	16	17	.485
1979-80	Joe Rosado	17	16	.515
1980-81	Joe Rosado	30	4	.882
1981-82	Rob Garrett	9	21	.300
1982-83	Bill Morse	32	4	.889
1983-84	Bill Morse	35	2	.946
1984-85	Bill Morse	35	3	.921
1985-86	Bill Morse	25	9	.735
1986-87	Bill Morse	23	9	.719
1987-88	Bill Morse	28	5	.848
1988-89	Bill Morse	21	9	.700
1989-90	Bill Morse	18	12	.600
1990-91	Bill Morse	18	12	.600
1991-92	Gary Garner	18	10	.643
TOTALS 12 Coaches		982	648	.638

* - Suran on leave of absence; coaching duties shared by Paul B. Gross and Wayne J. McConnell

Coaches Ranked By Wins

Years	Coach(Seasons)	Wins	Loss	Pct
1946-65	Cade Suran(18)	258	138	.652
1982-91	Bill Morse(10)	253	75	.771
1930-46	Paul B. Gross(15)	156	101	.607
1965-77	Charles G. Brehm(12)	144	141	.505
1977-81	Joe Rosado(4)	74	55	.574
1923-27	Frank Mandeville(4)	30	34	.469
1916-19	W.G. Speer(3)	26	11	.706
1991-92	Gary Garner(1)	18	10	.643
1920-23	George Woodward(3)	14	33	.298
1927-30	Harold Schmidt(3)	12	30	.286
1981-82	Rob Garrett(1)	9	21	.300
1919-20	A.J. Robertson(1)	6	9	.400
TOTALS 12 Coaches		982	648	.638

Meet the 1992-93 Tigers

33
Forward

Bryant Basemore
6-7, 190, Senior
West Memphis, Ark.
Mississippi County
Community College



Fort Hays State: Started 19 of 27 games as junior...Named first team All-Rocky Mountain Athletic Conference...FHSU's second leading scorer last season at 13.9 points per game...Led the Black & Gold in rebounding with 6.6 per game...Shot .550 from the field and .651 from the charity stripe...Best game came against Emporia State February 24, scored 29 points making 14 out of his 16 field goal attempts, one of two free throws, and hauled down nine rebounds in the Tigers' 85-69 victory.

Junior College: Earned All-Conference honors as both a freshman and sophomore at Mississippi County Community College, Blytheville, AR...Averaged 15 points, seven rebounds and six assists per game as a sophomore for a 22-8 squad...Was named the squads most valuable player.

High School: Was a four year letter winner in football and cross country at Hughes High School...All-State, All-Region and All-Conference as a senior...Student council vice-president.

Personal:

Born - August, 10 1970

Parents - Frank and Bernice James

Major - Physical Education

Bryant's Career Statistics

	Two Pt			Three Pt			Total				
<u>Yr</u>	<u>G-GS</u>	<u>FG-FGA</u>	<u>Pct</u>	<u>FG-FGA</u>	<u>Pct</u>	<u>FG-FGA</u>	<u>Pct</u>	<u>FT-FTA</u>	<u>Pct</u>	<u>TP</u>	<u>Avg</u>
91-92	27-19	154-277	.556	0-3	.000	154-280	.550	67-103	.651	375	13.9

Rebounds

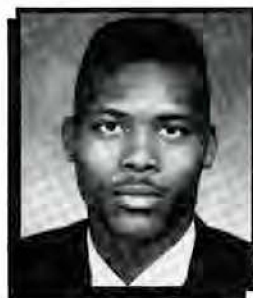
<u>Yr</u>	<u>Off</u>	<u>Def</u>	<u>Total</u>	<u>Assists</u>	<u>Turnovers</u>	<u>Blk Shots</u>	<u>Steals</u>	<u>PF-DO</u>	<u>Min-Avg</u>
91-92	60	117	177(6.6)	92(3.4)	80(3.0)	30(1.1)	64(2.4)	75-1	735-27.2

Meet the 1992-93 Tigers

20

**Guard
Forward**

**Allen Craft
6-4, 190, Junior
Memphis, Tenn.
Columbia State
Community College**



Fort Hays State: Comes to FHSU after two seasons at Columbia State Community College, Columbia, TN...Will play both guard and forward for the 1992-93 Tiger squad...Looks to help fill the void left by the graduation of senior backcourt from the 1991-92 FHSU squad.

Junior College: Earned National Junior College Athletic Association All-Region VII and All-Tennessee NJCAA honors as a sophomore...Averaged 23.6 points, 7.9 rebounds and 3.2 assists per contest...Second leading scorer in NJCAA Region VII...Shot 48.7 percent from three-point range and 52.6 percent overall from the field...Scored 40 points or better twice at Columbia State CC.

High School: Four year letter winner in basketball and track & field at Collierville High School, Collierville, TN...Placed second in the long jump at Tennessee state track meet.

Personal:

Born - July 31, 1972

Parent - Lorine Craft

Major - Mass Communication

This is Allen's first season of play at Fort Hays State University.

Meet the 1992-93 Tigers

10
Guard

Chad Creamer
5-10, 156, Freshman
Hays, Kan.
Thomas More Prep-
Marian High School



Fort Hays State: Keeps the same hometown address but changes gyms, moving from Thomas More Prep-Marian High School in Hays to Gross Memorial Coliseum...With the loss of three senior guards from the 1991-92 Black & Gold squad he could see considerable action as a freshman.

High School: Local Hays product who played at Thomas More Prep-Marian High School...Led his 1991-92 team to a third place finish at the class 4A state tournament...Earned All-State and All-Area honors during the 1991-92 season...Two time All-League performer...As a senior averaged 23 points and six assists per contest...Three year letter winner in basketball and baseball at TMP.

Personal:

Born - March 15, 1974

Parents - Duane and Jackie Creamer and Barb and Bill Arnold

Major - Business

This is Chad's first season of play at Fort Hays State University.

Meet the 1992-93 Tigers

40
Forward

Cedric Drewes
6-6, 190, Senior
Dodge City, Kan.
Dodge City
Community College



Fort Hays State: Cedric started seven of the 26 games he played in last season...As a spot starter he averaged 3.7 points per contest...Best game was versus Mesa State College in the RMAC pre-season tournament, scored 13 points on 6 of 10 shooting from the field...Qualified in the high jump for the NAIA National track & field championships as a member of the FHSU track & field squad following the 1991-92 basketball season...Garnered All-RMAC honors for his high jumping ability.

Junior College: Lettered two years at his hometown junior college...Averaged 12 points and six rebounds as a sophomore for the Conquistadors...Named an academic All-America while at Dodge City CC.

High School: Was a letter winner in basketball(3), track(4) and football(1) at Dodge City High School...Selected honorable mention All-State and first team All-Conference in basketball as a prep senior...Valedictorian and member of the National Honor Society his senior year.

Personal:

Born - May 15, 1971

Parents - Clarence and Bonnie Drewes

Major - Agri-Business

Cedric's Career Statistics

	Two Pt			Three Pt			Total				
<u>Yr</u>	<u>G-GS</u>	<u>FG-FGA</u>	<u>Pct</u>	<u>FG-FGA</u>	<u>Pct</u>	<u>FG-FGA</u>	<u>Pct</u>	<u>FT-FTA</u>	<u>Pct</u>	<u>TP</u>	<u>Avg</u>
91-92	26-7	32-61	.525	2-9	.222	34-70	.486	26-44	.591	96	3.7

	Rebounds									
<u>Yr</u>	<u>Off</u>	<u>Def</u>	<u>Total</u>	<u>Assists</u>	<u>Turnovers</u>	<u>Blk</u>	<u>Shots</u>	<u>Steals</u>	<u>PF-DQ</u>	<u>Min-Avg</u>
91-92	19	20	39(1.5)	12(.5)	19(.7)	-		9(.4)	47-2	321-12.4

Meet the 1992-93 Tigers

12
Guard

Matt Garner
5-10, 148, Freshman
Des Moines, Iowa
Valley High School



Fort Hays State University: The son of the Tiger head coach Matt followed his father from Des Moines, IA...Will play the point guard position for the Tigers in 1992-93...Should see court time as a result of last years graduations.

High School: Two year basketball letter winner at Valley High School in Des Moines, IA...Honorable mention All-Conference performer as a prep senior...Averaged 10 points and six assists per contest as a senior.

Personal:

Born - August 15, 1973

Parents - Gary and Barbara Garner

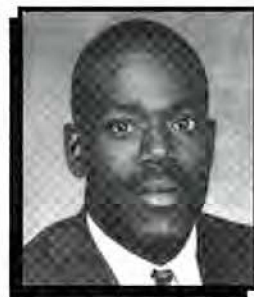
Major - Physical Education

This is Matt's first season of play at Fort Hays State University.

Meet the 1992-93 Tigers

25
Forward

Chris Henson
6-6, 185, Junior
Los Angeles, Calif.
Chaffey College



Fort Hays State: Comes to FHSU after two seasons at Chaffey College, Rancho Cucamonga, CA...Defensive player that plays inside the paint...Should add depth to an experienced FHSU front line.

Junior College: Earned All-Foothill conference honors both years at Chaffey College...As a freshman was named the conference defensive Player of the Year...As a sophomore averaged 12.6 points and 8.5 rebounds and shot 58.9 percent from the field...Scored a career high 32 points against San Bernardino Junior College last season.

High School: All-State and All-Area honors his senior year at Pasadena High School...Selected to play in the Boston Shootout after senior year...Garnered All-Conference honors as a junior.

Personal:

Born - February 9, 1971

Parents - Charles Henson and Caprice Devore

Major - Sociology

This is Chris' first season of play at Fort Hays State University.

Meet the 1992-93 Tigers

50
Forward

Darrell Hudson
6-6, 215, Senior
Hammond, Ind.
Frank Phillips
Junior College



Fort Hays State: Started 21 games in his first season with the Tigers...Second on the team in rebounds with 133, 4.9 per game...Averaged double figure points with 10.6 per outing...Career best game was against Colorado School of Mines January 13, scored 20 points making all eight two-point field goal attempts and missing his only three-point shot, hauled in five rebounds and dished out four assists.

Junior College: Two year starter at Frank Phillips Junior College, Borger, TX...Averaged 14 points and six rebounds per game as a sophomore.

High School: Four year letter winner in basketball at Gavit High School...Earned All-Area and All-Conference honors as prep senior.

Personal:

Born - August 25, 1971

Parents - Charlie and Esther Hudson

Major - Physical Education

Darrell's Career Statistics

	Two Pt				Three Pt		Total				
<u>Yr</u>	<u>G-GS</u>	<u>FG-FGA</u>	<u>Pct</u>		<u>FG-FGA</u>	<u>Pct</u>	<u>FG-FGA</u>	<u>Pct</u>	<u>FT-FTA</u>	<u>Pct.</u>	<u>TP Avg</u>
91-92	27-21	95-149	.638		14-43	.326	109-192	.568	53-78	.680	285 10.6

	Rebounds									
<u>Yr</u>	<u>Off</u>	<u>Def</u>	<u>Total</u>	<u>Assists</u>	<u>Turnovers</u>	<u>Blk Shots</u>	<u>Steals</u>	<u>PF-DQ</u>	<u>Min-Avg</u>	
91-92	48	85	133(4.9)	61(2.3)	65(2.4)	5(.2)	21(.8)	65-3	616-22.8	

Meet the 1992-93 Tigers

30
Forward

Eric Johnson
6-6, 185, Junior
Nashville, Tenn.
Columbia State
Community College



Fort Hays State: Eric transfers along with junior college teammate Allen Craft to FHSU from Columbia State Community College...Helps fill the void of six graduating seniors from the 1991-92 Tiger squad...Should add depth to the Tiger front line.

Junior College: Missed first 10 games of his sophomore season due to a knee injury...Averaged 10.7 points, 6.1 rebounds and 4.2 assists per game after his return from injury...Shot 38.7 percent from the three point range and 41.2 percent overall his last season at Columbia State CC.

High School: At Marshall County High School he garnered All-State, All-Area and All-Conference honors in basketball...Four year letter winner in basketball and baseball.

Personal:

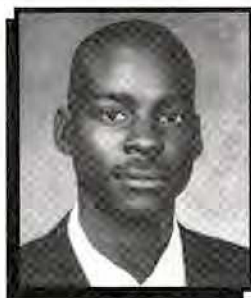
Born - February 1, 1972
Parent - Deborah Johnson
Major - Marketing

This is Eric's first season of play at Fort Hays State University.

Meet the 1992-93 Tigers

42
Forward

Ray Johnson
6-5, 180, Senior
West Convina, Calif.
Mid-Plains
Community College



Fort Hays State: Saw limited action in his first season at Fort Hays State...Played in 14 contests his junior year...Could see more playing time in 1992-93 with large class of graduating seniors from the 1991-92 squad.

Junior College: Played two seasons at Mid-Plains Community College, North Platte, NE...Was honored as a second team All-Conference pick as a juco sophomore.

High School: Was a three year letter winner in basketball as a high school athlete...Earned second team All-Area and first team All-Conference recognition at Raytown South High School in the Kansas City area.

Personal:

Born - January 24, 1970

Guardians - Uncle Rupert and Aunt Maud Thomas

Major - Business/Marketing

Ray's Career Statistics

	Two Pt			Three Pt			Total				
<u>Yr</u>	<u>G-GS</u>	<u>FG-FGA</u>	<u>Pct</u>	<u>FG-FGA</u>	<u>Pct</u>	<u>FG-FGA</u>	<u>Pct</u>	<u>FT-FTA</u>	<u>Pct.</u>	<u>TP</u>	<u>Avg</u>
91-92	14-0	4-10	.400	1-5	.200	5-15	.333	7-12	.583	18	1.3

Rebounds

<u>Yr</u>	<u>Off</u>	<u>Def</u>	<u>Total</u>	<u>Assists</u>	<u>Turnovers</u>	<u>Blk</u>	<u>Shots</u>	<u>Steals</u>	<u>PF-DQ</u>	<u>Min-Avg</u>
91-92	5	5	10(.7)	2(.1)	8(.6)	1(.1)	6(.4)	5-0		47-3.4

Meet the 1992-93 Tigers

52

Forward

Toby Kuhn
6-7, 210, Junior
Hays, Kan.
Thomas More Prep-
Marian High School



Fort Hays State: Started final eight games last season...Best game of 1991-92 came against Colorado School of Mines February 14, scored 15 points, 5-of-5 free throws and 5-for-9 from the field in 22 minutes...As a freshman played in 25 of the Tigers 30 games...Averaged 8.3 minutes a game and contributed 2.0 points and 2.0 rebounds per game...His best outing was against Emporia State with eight points and six rebounds...Shot .586 percent from the field.

High School: Lettered in three sports as a prep athlete basketball(3), football(3) and track & field(4)...All-Mid States Activites Association and All-Area by the Hays Daily News as a senior...Averaged 15.9 points and 8.1 rebounds at TMP-Marian...Selected to play in the Boot Hill Classic All-Star game and Kansas Basketball Coaches Association All-Star game.

Personal:

Born - August 1, 1972

Parents - Ollie and Nettie Kuhn

Major - Chemistry/Pre-Medicine

Toby's Career Statistics

Yr	G-GS	Two Pt			Three Pt			Total			PF-DQ	Min-Avg
		FG	FGA	Pct	FG	FGA	Pct	FG	FGA	Pct		
90-91	25-0	17-29	.586	0-0	.000	17-29	.586	16-30	.533	50	2.0	
91-92	23-8	38-66	.576	0-0	.000	38-66	.576	25-32	.781	101	4.4	
Totals	48-8	55-95	.579	0-0	.000	55-95	.579	41-62	.661	151	3.2	

Rebounds

Yr	Off	Def	Total	Assists	Turnovers	Blk	Shots	Steals	PF-DQ	Min-Avg
90-91	18	31	49(1.9)	3(.1)	11(44)	0	3(.1)	14-0	208-8.3	
91-92	15	31	46(2.0)	7(.3)	14(.6)	1(0)	8(.4)	17-0	248-10.8	
Totals	33	62	95(2.0)	10(.2)	25(5)	1	11(.2)	31-0	456-9.5	

Meet the 1992-93 Tigers

44

**Forward
Center**

**Radford Rainey
6-6, 220, Junior
Zachary, La.
State Fair
Community College**



Fort Hays State: Radford comes to the Tigers from State Fair Community College, Sedalia, MO...Big man could fill the last piece of the pie for the 1992-93 Black & Gold squad.

Junior College: Averaged 11.4 points and 5.1 rebounds per contest at State Fair Community College...Shot 64 percent from the field as a sophomore.

High School: All-District and All-Parish as senior prep athlete at Northeast High School...Four year basketball letter winner as a prep athlete.

Personal:

Born - December 16, 1972

Parents - Huey and Hazel Rainey

Major - Criminal Justice

This is Radford's first season of play at Fort Hays State University.

Meet the 1992-93 Tigers

14
Guard

Brad Roulier
5-10, 149, Freshman
Littleton, Colo.
Denver Academy



Fort Hays State: Could see time at guard with the graduation of three senior backcourt players from the 1991-92 squad...Transferred to FHSU from the University of Nevada Las Vegas...Practiced with the UNLV squad but did not participate in contests.

High School: Holds the career record for assists in the state of Colorado...Two time All-State and three time All-Conference performer as a prep athlete at Denver Academy...Four year basketball letter winner in high school.

Personal:

Born - March 25, 1973

Parents - Jay and Eledra Roulier

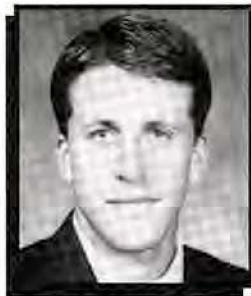
Major - Business

This is Brad's first season of play at Fort Hays State University.

Meet the 1992-93 Tigers

22
Guard

William Swede Trenkle
6-2, 185, Junior
Twin Falls, Idaho
University of Idaho



Fort Hays State: Transfers to Fort Hays State after two seasons at the University of Idaho...Saw limited playing time in two season with the Vandals...Can play either point or off guard...May possibly fill void left by graduation of last years Black & Gold senior guard trio.

High School: Averaged 24.0 points per contest at Twin Falls High School, Twin Falls, ID...Earned honorable mention All-America, All-State and All-Gem State Conference honors as a senior prep athlete...Three year starter as a high school basketball player...As a junior averaged over 20.0 points per outing.

Personal:

Born - January 14, 1971

Parents - Fred and Nita Trenkle

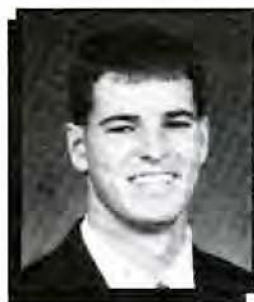
Major - Business Finance

This is Swede's first season of play at Fort Hays State University.

Meet the 1992-93 Tigers

31
Guard

Shawn Wiebe
6-1, 170, Junior
Burns, Kan.
Berean Academy



Fort Hays State: Earned a spot on the FHSU roster as a walkon...Transferred to FHSU after two years at Tabor College.

High School: Named to the 3A Honorable Mention All-State squad...All-Conference and All-Southwest Kansas selection as a senior prep athlete...Lettered as a prep athlete in basketball(3), cross country(3) and track & field(4).

Personal:

Born - September 14, 1971

Parents - Ted and Nancy Wiebe

Major - Math Education

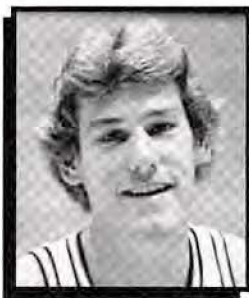
This is Shawn's first season of play at Fort Hays State University.

All-Time Series Records

Team	Last Game #	Won	Lost				
Abilene Christian (TX)	1991-92	7	5	2	Mid-America Naz. (KS)	1990-91	3 3 0
Adams State (CO)	1991-92	8	5	3	Midland Lutheran (NE)	1968-69	1 1 0
Alaska-Anchorage	1984-85	1	1	0	Mississippi College	1990-91	1 1 0
Amer. Christian (OK)	1974-75	1	1	0	Missouri-Kansas City	1985-86	10 9 1
Angelo State (TX)	1991-92	5	3	2	Missouri-School of Mines	1956-57	2 1 1
Arizona	1983-84	1	0	1	Missouri Southern	1988-89	26 16 10
Arkansas A&M & N	1962-63	1	1	0	Missouri Valley (MO)	1985-86	2 2 0
Arkansas Baptist	1986-87	1	1	0	Missouri Western	1988-89	26 19 7
Arkansas State	1958-59	2	1	1	Nebraska-Kearney	1991-92	76 53 23
Arkansas Tech	1951-52	1	1	0	Nebraska-Omaha	1972-73	34 22 12
Athens State (AL)	1984-85	1	1	0	New Mexico	1936-37	1 1 0
Auburn-Montgomery (AL)	1981-82	1	0	1	New Mexico A & M	1950-51	1 1 0
Augsburg (MN)	1962-63	1	1	0	New Mexico Highlands	1991-92	4 3 1
Augustana (SD)	1978-79	2	1	1	New Mexico	1962-63	1 0 1
BYU-Hawaii	1978-79	1	1	0	North Dakota	1957-58	1 0 1
Baker (KS)	1988-89	9	3	6	Northeastern Oklahoma St.	1982-83	2 1 1
Baptist Bible (MO)	1980-81	1	1	0	Northeast Missouri State	1989-90	1 1 0
Baptist Christian (LA)	1986-87	1	1	0	Northern Colorado	1975-76	26 17 9
Belmont Abbey (NC)	1987-88	1	1	0	Northwest Missouri State	1968-69	4 3 1
Benedictine (KS)	1988-89	87	48	39	Northwestern Oklahoma St.	1988-89	23 18 5
Bethel (KS)	1983-84	8	6	2	Occidental (CA)	1976-77	1 0 1
Bethany (KS)	1984-85	44	26	18	Oklahoma Baptist	1974-75	5 4 1
Briar Cliff (IA)	1985-86	2	0	2	Oklahoma Christian	1981-82	1 0 1
California Poly-San Luis Obispo	1990-91	1	1	0	Oklahoma City	1949-50	6 4 2
California-Santa Barbara	1951-52	2	1	1	Oral Roberts (OK)	1989-90	2 0 2
Cameron (OK)	1989-90	1	1	0	Ottawa (KS)	1980-81	1 8 3
Carroll (MT)	1970-71	1	1	0	Pacific Lutheran (WA)	1958-59	1 0 1
Carson-Newman (TN)	1985-86	2	2	0	Pan American (TX)	1962-63	1 0 1
Carthage (IL)	1961-62	1	1	0	Panhandle State (OK)	1988-89	19 15 4
Central Missouri State	1979-80	3	2	1	Peru State (NE)	1956-57	8 6 2
Central State (OK)	1985-86	7	6	1	Phillips (OK)	1987-88	4 4 0
Central Washington	1984-85	1	1	0	Pittsburg State (KS)	1988-89	132 69 63
Central Wesleyan (SC)	1983-84	1	1	0	Prairie View A&M (TX)	1960-61	1 0 1
Chadron State (NE)	1991-92	6	6	0	Quincy (IL)	1964-65	1 0 1
Chaminade (HI)	1984-85	4	2	2	Regis (CO)	1971-72	7 3 4
Chicago State (IL)	1983-84	2	1	1	Rockhurst (MO)	1988-89	12 8 4
College of Emporia (KS)	1942-43	22	17	5	Rockmont (CO)	1981-82	2 2 0
College of Santa Fe (NM)	1984-85	2	1	1	Rocky Mountain (MT)	1984-85	2 2 0
Colorado College	1989-90	19	15	4	St. Cloud State (MN)	1964-65	1 0 1
Colorado School of Mines	1991-92	9	9	0	St. Mary's (MN)	1926-27	22 9 13
Columbia (MO)	1980-81	1	1	0	St. Mary of Plains (KS)	1983-84	6 2 4
Concordia (NE)	1985-86	1	1	0	St. Michael's Co. (NM)	1963-64	2 1 1
Concordia Lutheran (TX)	1987-88	1	1	0	St. Thomas Aquinas (NY)	1982-83	1 1 0
Culver-Stockton (MO)	1977-78	1	1	0	San Diego State (CA)	1979-80	2 1 1
David Lipscomb (TN)	1984-85	1	1	0	Sciences & Art (OK)	1979-80	4 3 1
Denver (CO)	1980-81	2	1	1	Southeastern Oklahoma St.	1979-80	1 1 0
Doane (NE)	1985-86	6	6	0	Southern Arkansas	1982-83	2 1 1
Drake (IA)	1978-79	1	0	1	Southern Colorado	1975-76	27 9 18
Drury (MO)	1989-90	1	6	5	Southern Mississippi	1956-57	1 1 0
East Central State (OK)	1973-74	2	2	0	Southern Nazarene (OK)	1987-88	3 2 1
Eastern New Mexico State	1973-74	9	4	5	Southern Utah State	1969-70	1* 0
Emporia State (KS)	1991-92	143	74	69	Southwestern (KS)	1974-75	2 1 1
Fort Lewis (CO)	1990-91	3	2	1	Southwestern (TX)	1987-88	1 1 0
Friends (KS)	1988-89	18	15	3	Southwestern Ok. State	1986-87	22 16 6
Gardner-Webb (NC)	1973-74	1	0	1	Southwest Texas State	1958-59	1 0 1
Grambling (LA)	1962-63	1	0	1	Spring Arbor (MI)	1987-88	1 1 0
Grand Canyon (AZ)	1987-88	4	1	3	Sterling (KS)	1982-83	31 24 7
Hanover (IN)	1980-81	1	1	0	Stonehill (MA)	1990-91	1 1 0
Harris-Stowe (MO)	1980-81	1	1	0	Tabor (KS)	1989-90	7 7 0
Haskell Institute (KS)	1937-38	6	5	1	Taylor (IN)	1983-84	2 2 0
Hastings (NE)	1982-83	28	17	1	Tulane (LA)	1979-80	1 0 1
Illinois State	1965-66	1	0	1	Washburn (KS)	1991-92	123 52 71
Jarvis Christian (TX)	1984-85	1	1	0	Wayland Baptist (TX)	1984-85	3 3 0
Kansas Newman	1986-87	33	25	8	Waynesburg College (PA)	1983-84	1 1 0
Kansas State	1947-48	4	2	2	Wayne State (NE)	1991-92	33 26 7
Kansas Wesleyan	1990-91	65	43	22	Western Carolina (NC)	1972-73	2 0 2
Langston (OK)	1984-85	4	3	1	Western Montana	1970-71	2 1 1
Lewis & Clark (OR)	1961-62	1	0	1	Western State College	1991-92	4 2 2
Lincoln (MO)	1985-86	7	3	4	Westminster (MO)	1978-79	1 1 0
Loras (IA)	1982-83	1	1	0	Westminster (UT)	1958-59	1 1 0
McKendree (IL)	1954-55	1	1	0	West Virginia Tech	1985-86	1 1 0
McPherson (KS)	1990-91	34	25	9	West Virginia Wesleyan	1982-83	1 0 1
McPherson Central (KS)	1945-46	1	1	0	West Texas State	1991-92	1 1 0
Mankato State (MN)	1951-52	1	1	0	Wichita State (KS)	1954-55	36 13 23
Marymount (KS)	1988-89	29	19	10	Winthrop (SC)	1981-82	1 0 1
Mesa State College	1991-92	5	3	2	Wisconsin-Stevens Point	1989-90	2 1 1
					York (NE)	1933-34	1 1 0

1992-93 opponents in bold

Top 10 Career Scoring & Rebounding



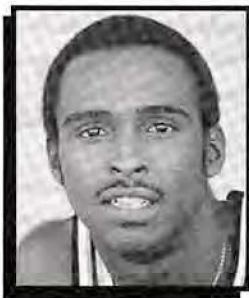
Mark Wilson

Scoring

1,631	Mark Wilson	1978-81
1,615	Raymond Lee	1982-86
1,492	Mike Pauls	1975-79
1,377	Mark Harris	1986-88
1,291	Barton Snow	1971-73, 74-76
1,281	Rege Klitzke	1979-83
1,250	Fred Campbell	1984-86
1,220	Sam McDowell	1960-64
1,158	Mike Miller	1985-89
1,135	Nate Rollins	1982-84



Barton Snow



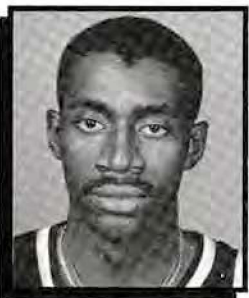
Raymond Lee

Rebounding

980	Barton Snow	1971-73, 74-76
907	Mike Pauls	1975-79
831	Rege Klitzke	1979-83
800	Doug Thurman	1970-74
627	Mike Miller	1985-89
614	John Channel	1961-63
600	Dean Larson	1958-62
584	Nate Rollins	1982-84
583	Fred Campbell	1984-86
553	Darrel Stockstill	1969-71



Mike Pauls



Mark Harris



Rege Klitzke

1992-93 Tiger Basketball Roster

NUMERICAL

<u>No</u>	<u>NAME</u>	<u>POS</u>	<u>HGT</u>	<u>YR</u>	<u>WGT</u>	<u>HOMETOWN(Last School)</u>
10	Chad Creamer	G	5-10	Fr	156	Hays, KS (TMP-Marian HS)
12	Matt Garner	G	5-10	Fr	148	Des Moines, IA (Valley HS)
14	Brad Roulier	G	5-10	Fr	149	Littleton, CO (Denver Academy HS)
20	Allen Craft	G-F	6-4	Jr	190	Memphis, TN (Columbia State CC)
22	Swede Trenkle	G	6-2	Jr	185	Twin Falls, ID (Idaho University)
25	Chris Henson	F	6-6	Jr	185	Los Angeles, CA (Chaffey College)
30	Eric Johnson	F	6-6	Jr	185	Nashville, TN (Columbia State CC)
31	Shawn Wiebe	G	6-1	Jr	170	Burns, KS (Tabor College)
33	Bryant Basemore	F	6-7	Sr	190	W. Memphis, AR(Mississippi County CC)
40	Cedric Drewes	F	6-6	Sr	190	Dodge City, KS (Dodge City CC)
42	Ray Johnson	F	6-5	Sr	180	W. Covina, CA (Mid-Plains CC)
44	Radford Rainey	F-C	6-6	Jr	220	Zachary, LA (State Fair CC)
50	Darrell Hudson	F	6-6	Sr	215	Hammond, IN (Frank Phillips JC)
52	Toby Kuhn	C	6-7	Jr	210	Hays, KS (TMP-Marian HS)

ALPHABETICAL

<u>NO</u>	<u>NAME</u>	<u>POS</u>	<u>HGT</u>	<u>YR</u>	<u>WGT</u>	<u>HOMETOWN(Last School)</u>
33	Bryant Basemore	F	6-7	Sr	190	W. Memphis, AR(Mississippi County)
20	Allen Craft	G-F	6-4	Jr	190	Memphis, TN (Columbia State CC)
10	Chad Creamer	G	5-10	Fr	156	Hays, KS (TMP-Marian HS)
40	Cedric Drewes	F	6-6	Sr	190	Dodge City, KS (Dodge City CC)
12	Matt Garner	G	5-10	Fr	148	Des Moines, IA (Valley HS)
25	Chris Henson	F	6-6	Jr	185	Los Angeles, CA (Chaffey College)
50	Darrell Hudson	F	6-6	Sr	215	Hammond, IN (Frank Phillips JC)
30	Eric Johnson	F	6-6	Jr	185	Nashville, TN (Columbia State CC)
42	Ray Johnson	F	6-5	Sr	180	W. Covina, CA (Mid-Plains CC)
52	Toby Kuhn	C	6-7	Jr	210	Hays, KS (TMP-Marian HS)
44	Radford Rainey	F-C	6-6	Jr	220	Zachary, LA (State Fair CC)
14	Brad Roulier	G	5-10	Fr	149	Littleton, CO (Denver Academy HS)
22	Swede Trenkle	G	6-2	Jr	185	Twin Falls, ID (Idaho University)
31	Shawn Wiebe	G	6-1	Jr	170	Burns, KS (Tabor College)

Head Coach: Gary Garner (University of Missouri '65)

Assistant Coach: Chad Wintz (University of Kansas '87)

Graduate Assistant: Mike Rohn (McPherson College '89)

Rawlings

Rawlings the Official Ball of the
Rocky Mountain Athletic Conference

Fort Hays State University



Founded in 1902 on the Plains of Western Kansas, Fort Hays State University is the second youngest of the six state universities of higher education.

From an exciting beginning, when 34 students were greeted by two faculty members and a 19-course curriculum, our University has grown to a student body of 5,700, a faculty of nearly 300, a support staff of 250 and a curriculum comprised of 1,500 courses.

Fort Hays State University is one of seven state-assisted universities governed by a Board of Regents appointed by the Governor of the State of Kansas.

The main campus of FHSU sits on 200 of the 4,160 acres owned by the state of Kansas and deeded to the University. Winding Big Creek, with its shady, grassy banks, traverses

the campus and provides not only a tranquil, conducive learning atmosphere, but also a natural laboratory for students in the biological sciences. Our campus has often been called the prettiest in Kansas.

Fort Hays State University is located in Hays, the largest city in northwest Kansas. A progressive city of 17,500 people, Hays is an old cow town on the Union Pacific railroad. The old and the new blend beautifully to form a city that is small enough you can feel comfortable in, yet is large enough to provide culture and shopping facilities second to none.

The University is comprised of four colleges: Arts and Sciences, Business, Education, and Health and Life Sciences, and a Graduate School.

FHSU is academically superior to many comparable

universities and is richly endowed by heritage and tradition. A recent survey of our students showed that while there are a multitude of reasons why students come to our University, their overwhelming response was "because of the University's reputation for academic excellence."

Fort Hays State University supports one of the most extensive intercollegiate sports programs of any comparable size college or university in America. More than 350 athletes annually compete in seven men's and five women's sports.

Fort Hays State University recently joined the Rocky Mountain Athletic Conference. The RMAC is comprised of eight schools from the states of Kansas, Colorado, Nebraska and New Mexico.

1991-92 Individual Statistics

Player	G-GS	Two Pt		Three Pt		Total		FT-FTAPct.	TP	Avg
		FG-FGA	Pct	FG-FGA	Pct	FG-FGA	Pct			
Evans	27-24	116-242	.479	28-68	.412	144-310	.465	112-141	.794	428 15.9
Basemore	27-19	154-277	.556	0-3	.000	154-280	.550	67-103	.651	375 13.9
Wiley	28-28	43-88	.489	63-134	.470	106-222	.478	56-64	.875	331 11.8
Hudson	27-21	95-149	.638	14-43	.326	109-192	.568	53-78	.680	285 10.6
Benjamin	25-10	77-127	.606	0-4	.000	77-131	.588	35-51	.686	189 7.6
Garrett	24-5	71-130	.546	0-0	.000	71-130	.546	34-60	.567	176 7.3
Sawyer	28-8	16-44	.364	24-69	.348	40-113	.354	41-52	.789	145 5.2
Kuhn	23-8	38-66	.576	0-0	.000	38-66	.576	25-32	.781	101 4.4
Carson	27-10	36-73	.493	2-10	.200	38-83	.458	31-46	.674	109 4.0
Drewes	26-7	32-61	.525	2-9	.222	34-70	.486	26-44	.591	96 3.7
Levy-Mayer	17-0	7-15	.467	12-25	.480	19-40	.475	4-4	1.000	54 3.2
Johnson	14-0	4-10	.400	1-5	.200	5-15	.333	7-12	.583	18 1.3
Angell	13-0	2-7	.286	2-9	.222	4-16	.250	3-4	.750	13 1.0
Totals	28-28	691-1289	.536	148-379	.391	839-1668	.503	494-691	.715	2320 82.9

Opponents 28-28 578-1174 .492 160-451 .355 738-1625 .454 438-634.691 2074 74.1

	Rebounds									
Player	Off	Def	Total	Assists	Turnovers	Blk	Shots	Steals	PF-DQ	Min-Avg
Evans	31	81	112(4.2)	74(2.7)	54(2.0)	7(.3)	48(1.8)	64-2	838-31.0	
Basemore	60	117	177(6.6)	92(3.4)	80(3.0)	30(1.1)	64(2.4)	75-1	735-27.2	
Willey	11	81	92(3.3)	107(3.8)	61(2.2)	-	32(1.1)	54-1	925-33.0	
Hudson	48	85	133(4.9)	61(2.3)	65(2.4)	5(.2)	21(.8)	65-3	616-22.8	
Benjamin	39	56	95(3.8)	24(1.0)	45(1.8)	5(.2)	11(.4)	88-5	412-16.5	
Garrett	32	51	83(3.5)	28(1.2)	41(1.7)	2(.1)	11(.5)	49-0	414-17.3	
Sawyer	5	60	65(2.3)	76(2.7)	50(1.8)	4(.1)	26(.9)	50-0	584-20.9	
Kuhn	15	31	46(2.0)	7(.3)	14(.6)	1(0)	8(.4)	17-0	248-10.8	
Carson	26	29	55(2.0)	22(.8)	36(1.3)	7(.3)	10(.4)	55-2	325-12.0	
Drewes	19	20	39(1.5)	12(.5)	19(.7)	-	9(.4)	47-2	321-12.4	
Levy-Mayer	5	9	14(.8)	5(.3)	9(.5)	-	3(.2)	12-1	91-5.4	
Johnson	5	5	10(.7)	2(.1)	8(.6)	1(.1)	6(.4)	5-0	47-3.4	
Angell	2	3	5(.4)	3(.2)	2(.2)	-	-	3-0	44-3.4	
Team			100							
Totals	298	628	1026(36.6)	513(18.3)	484(17.3)	62(2.2)	249(8.9)	584-17		

Opponents 269 561 934(33.4) 374(13.4) 544(19.4) 71(2.5) 207(7.4) 580-18

Score By Periods	1	2	OT	TOTAL	Deadball Rebounds
FHSU	1111	1194	15	2320	75
Opponents	994	1073	7	2074	74

1991-92 Results & Individual Scoring

Tiger Scoreboard

Date	Opponent	Score	Attend	Loc	FHSU High		Opponent High	
					Scorer	Rebounder	Scorer	Rebounder
N 22	Colorado Mines	W 107-47	1610	H	Willey-23	Hudson-8	Gefroh-12	Kenyon-7
N 23	Mesa State	W 93-71	2150	H	Basemore-18	Hudson-10	Cook-18	Cook-10
N 24	Chadron State	W 93-75	1530	H	Evans-21	Hud., Garrett-8	Jo Robinson-20	Jo Rob.-11
N 29	Abilene Christian	W 91-69	1199	H	Willey-24	Garrett-6	Coolidge-17	Spurlock-6
N 30	Angelo State	W 72-65	1220	H	Garrett-19	Hudson-7	Mason-17	Hurst-9
D 10	Washburn Univ.	L 74-75	2975	H	Evans-16	Basemore-7	Ellington-17	Hulbert-8
D 13	Angelo State	L 68-76	907	A	Basemore-16	Hudson-11	Mason-22	Hurst-9
D 14	Abilene Christian	L 94-99	205	N	Willey-23	Hudson-6	Heaps-24	Souto-6
D 20	West Texas State	W 68-65	672	N	Evans-23	Evans-8	Adams-19	Roose-11
D 21	Washburn Univ	L 85-101	1725	A	Evans-30	Willey-4	Rogers-14	Two with-5
J 10	Chadron State	W 93-88	400	A	Evans-21	Three with 8	Ja Robinson-19	Blomme-9
J 13	Colorado Mines	W 90-70	1366	H	Evans-22	Evans-7	Gefroh-26	Kenyon-5
J 17	Western State	L 63-67	2250	A	Willey-13	Basemore-7	Fendry-22	Fendry-14
J 18	*Mesa State	W 70-96	2800	A	Basemore-22	Benjamin-8	Cook-24	Cook-7
J 23	NM Highlands	W 81-65	1233	H	Basemore-18	Basemore-9	Darnell-21	Ruiz-9
J 25	Adams State	W 74-58	2350	H	Hudson-16	Three with 5	Shkapich-20	Wilson-5
J 27	Washburn Univ.	L 60-84	2288	A	Basemore-19	Basemore-9	Lamar-20	Daniels-5
J 30	Western State	L 80-58	3799	H	Evans-19	Benjamin-7	Pigford-13	Fendry-7
F 1	Mesa State	W 85-46	3101	H	Basemore-14	Basemore-7	Bruens-31	Bruens-9
F 3	Emporia State	L 70-79	2000	A	Evans-21	Evans-12	Uphoff-21	McCallop-11
F 7	NM Highlands	W 87-79	OT 1300	A	Willey-20	Basemore-7	Echols-25	Ruis-12
F 8	Adams State	L 78-79	1700	A	Evans-26	Basemore-6	Widhalm-21	Wilson-6
F 14	Colorado Mines	W 100-81	233	A	Evans-22	Basemore-9	Kenyon-37	O'Connor-8
F 17	Chadron State	W 109-69	4050	H	Evans-20	Base., Benj.-6	Jo Robinson-27	Two with-5
F 22	Wayne State	W 86-62	2218	H	Evans-20	Basemore-9	Allen, Kuzak-12	Allen-11
F 24	Emporia State	W 85-69	2666	H	Basemore-29	Basemore-9	Williams-24	Stiede-7
F 26	Nebraska-Kearney	L 105-113	1410	A	Benjamin-23	Benjamin-12	Schiedegger-24	Mueller-6
F 29	Wayne State	L 59-68	1250	A	Basemore-21	Basemore-12	Dunbar-22	Allen-11

*forfeit for use of ineligible player

Record: Overall 18-10, RMAC: 10-2(1st)

Individual Scoring & Rebounding

Opponent	Base.	Benj.	Carson	Drewes	Evans	Garrett	Hudson	John.	Kuhn	Mayer	Sawyer	Willey
Colorado Mines	18-5	9-5	2-3	6-4	DNP	10-3	17-8	2-0	8-3	DNP	8-2	23-2
Mesa State	18-9	4-3	0-0	13-2	14-2	14-4	9-10	0-1	0-1	0-0	9-3	12-4
Chadron State	6-7	8-7	7-1	7-2	21-5	13-8	7-8	3-0	2-0	0-0	2-1	17-5
Abilene Christian	11-2	8-3	9-2	4-4	5-4	13-6	3-3	3-2	0-1	2-3	7-2	24-3
Angelo State	10-6	0-0	0-0	3-2	16-2	19-3	14-7	DNP	DNP	DNP	3-5	7-4
Washburn Univ.	14-7	8-1	2-1	0-3	16-5	8-3	6-4	DNP	DNP	DNP	8-3	12-3
Angelo State	16-5	10-4	9-4	2-0	2-3	9-6	8-11	DNP	DNP	DNP	3-4	9-3
Abilene Christian	16-3	10-1	6-4	1-2	16-5	4-2	11-6	DNP	0-2	0-0	7-1	23-4
West Texas State	11-5	2-3	4-2	6-0	23-8	8-2	4-1	DNP	0-0	DNP	4-1	6-2
Washburn Univ	8-2	2-2	2-0	0-0	30-3	12-3	12-2	2-0	DNP	3-2	4-1	10-4
Chadron State	DNP	4-8	4-3	12-2	21-8	DNP	7-6	0-0	10-2	DNP	18-8	17-3
Colorado Mines	6-4	6-1	3-2	5-0	22-7	DNP	20-5	1-0	7-2	DNP	16-4	4-2
Western State	11-7	2-2	7-4	3-1	12-5	DNP	12-3	DNP	0-2	DNP	3-4	13-4
Mesa State	22-5	16-8	2-2	0-3	12-3	DNP	9-6	0-0	2-1	DNP	2-2	5-4
NM Highlands	18-9	12-2	8-2	DNP	12-7	3-2	9-5	0-0	2-2	DNP	3-3	14-2
Adams State	9-3	9-5	9-5	1-1	8-1	4-3	16-5	0-1	0-3	2-0	2-3	14-1
Washburn Univ.	19-9	6-1	0-4	2-0	7-3	5-4	15-7	DNP	DNP	DNP	0-1	6-3
Western State	16-4	4-7	3-2	0-1	19-1	4-2	13-6	0-0	10-5	3-0	0-1	8-3
Mesa State	14-7	4-4	9-1	2-1	8-2	4-2	9-3	3-2	6-1	4-0	9-6	9-5
Emporia State	8-7	10-2	0-0	DNP	21-12	3-3	7-5	DNP	2-1	9-2	0-0	10-5
NM Highlands	16-7	DNP	0-2	0-0	17-4	7-1	10-5	DNP	6-4	4-3	7-2	20-3
Adams State	13-6	DNP	2-2	4-2	26-3	10-5	8-2	DNP	1-2	5-1	2-2	7-2
Colorado Mines	13-11	10-3	7-2	4-2	22-0	4-0	7-4	DNP	15-3	0-0	2-1	16-1
Chadron State	12-6	15-6	6-2	4-1	20-3	0-1	19-4	2-3	8-3	3-1	5-0	12-4
Wayne State	14-9	2-1	DNP	2-2	20-3	2-3	12-2	2-1	11-0	3-1	9-2	9-2
Emporia State	29-9	5-4	4-1	4-1	16-6	7-7	11-3	DNP	0-3	0-0	4-0	5-6
Nebraska-Kearney	6-11	23-12	0-0	5-2	15-2	6-1	10-2	DNP	7-1	14-0	5-1	14-4
Wayne State	21-12	DNP	4-2	6-1	7-5	7-9	DNP	DNP	4-4	2-1	3-2	5-4

1991-92 Team & Individual Highs & Lows

Team Highs & Lows

	Fort Hays State		Opponent	
Points 1st Half:	High	54 vs. Chadron State (1)	53	by Washburn Univ. (2)
	Low	22 vs. Washburn Univ. (2)	19	by NM Highlands (1)
Points 2nd Half:	High	63 vs. Washburn Univ. (2)	66	by Nebraska-Kearney
	Low	29 vs. Western State (1)	25	by Mesa State (3)
Total Points:	High	109 vs. Chadron State (3)	113	by Nebraska-Kearney
	Low	59 vs. Wayne State (2)	46	by Mesa State (3)
Field Goals Made:	High	44 vs. Chadron State (3)	41	by Nebraska-Kearney
	Low	19 vs. Washburn Univ. (3)	16	by Mesa State (3)
Field Goals Attempted:	High	78 vs. Nebraska-Kearney	73	by NM Highlands (2) ot
	Low	43 vs. Washburn Univ. (3)	43	by Adams State (1)
Field Goal Percentage:	High	.603 vs. Chadron State (3)	.604	by Washburn Univ. (2)
	Low	.333 vs. Wayne State (2)	.346	by Colorado Mines (1)
3-Pt Field Goals Made:	High	14 vs. Nebraska-Kearney	11	by Abilene Christian (2)
	Low	1 vs. Mesa State (2)	1	by Wayne State (2)
3-Pt Field Goals Att:	High	28 vs. Nebraska-Kearney	23	by Abilene Christian (2)
	Low	7 vs. Washburn Univ. (3)	6	by Mesa State (3)
3-Pt Field Goal Pct:	High	.579 vs. Colorado-Mines (1)	.636	by Nebraska-Kearney
	Low	.100 vs. Mesa State (2)	.050	by West Texas State
Free Throws Made:	High	37 vs. Chadron State (2)	34	by Mesa State (2)
	Low	2 vs. Mesa State (1)	2	by NM Highlands (1)
Free Throws Attempted:	High	51 vs. Chadron State (2)	41	by Mesa State (2)
	Low	5 vs. Mesa State (1)	2	by NM Highlands (1)
Free Throw Percentage:	High	1.000 vs. Chadron State (3)	1.000	by Adams State (1)
	Low	.400 vs. Mesa State (1)	.421	by Washburn Univ. (1)
Offensive Rebounds:	High	17 vs. Mesa State (2)	16	by Wayne State (1)
	Low	4 vs. Washburn Univ. (1)	3	by Mesa State (2)
Defensive Rebounds:	High	34 vs. Chadron State (2)	33	by Emporia State (1)
	Low	13 vs. Washburn Univ. (2)	9	by Adams State (1)
Total Rebounds:	High	46 vs. Angelo State (2)	45	by Emporia State (1)
	Low	23 vs. Washburn Univ. (2)	19	by Adams State (1)
Assists:	High	26 vs. Chadron State (3)	28	by Nebraska-Kearney
	Low	6 vs. Wayne State (2)	4	by Colorado Mines (3)
Blocked Shots:	High	5 vs. NM Highlands (2) ot	11	by Emporia State (1)
	Low	0 vs. Wayne State (2)	0	by Colorado Mines (2)
Steals:	High	17 vs. Mesa State (3)	18	by Washburn Univ. (3)
	Low	2 vs. Chadron State (2)	1	by Mesa State (2)
Turnovers:	High	28 vs. Washburn Univ. (3)	38	by Colorado Mines (1)
	Low	6 vs. Angelo State (1)	9	by Angelo State (2)
Personal Fouls:	High	29 vs. Mesa State (2)	31	by Chadron State (2)
	Low	10 vs. NM Highlands (1)	13	by Nebraska-Kearney

Individual Highs

Points	30	by Damian Evans vs. Washburn University (1)
Field Goals Made	14	by Bryant Basemore vs. Emporia State (2)
Field Goals Attempted	21	by Damian Evans vs. Emporia State (1)
3 Pt Field Goals Made	7	by Mark Willey vs. Colorado Mines (1)
3 Pt Field Goals Attempted	11	by Mark Willey vs. Mesa State (1)
Free Throws Made	14	by Damian Evans vs. Chadron State (2)
Free Throws Attempted	16	by Damian Evans vs. Chadron State (2)
Offensive Rebounds	8	by Dana Benjamin vs. Nebraska-Kearney
Defensive Rebounds	9	by Bryant Basemore vs. Colorado Mines (3)
Total Rebounds	12	by Bryant Basemore vs. Wayne State (2)
		by Dana Benjamin vs. Nebraska-Kearney
		by Damian Evans vs. Emporia State (1)
Assists	11	by Mark Willey vs. Mesa State (1)
Steals	7	by Bryant Basemore vs. Western State (1)
Blocked Shots	3	by Bryant Basemore vs. Colorado Mines (2) & Colorado Mines (3)
Turnovers	8	by Damian Evans vs. Mesa State (2)

1991-92 RMAC

	Standings				Overall	
	Conference					
Fort Hays State University	10	2	.833	18	10	.643
Western State College	8	4	.667	19	10	.655
Adams State College	8	4	.667	14	11	.560
Chadron State College	7	5	.583	16	14	.533
New Mexico Highlands	5	7	.416	10	18	.357
Mesa State College*	4	8	.333	11	13	.458
Colorado School of Mines	0	12	.000	0	27	.000

*-forfeited two RMAC wins, one non-league win, ineligible player

1991-92 Post-Season Honors

All-Rocky Mountain Athletic Conference

First Team

<u>Name</u>	<u>School</u>	<u>Position</u>	<u>Hgt</u>	<u>Class</u>
Bryant Basmore	Fort Hays State	F	6-7	Jr
Damian Evans	Fort Hays State	G	6-2	Sr
Mike Hall	Adams State College	G	6-0	Sr
Josh Robinson	Chadron State College	C	6-5	Sr
Steve Fendry	Western State College	F	6-7	Jr

Second Team

Dennis Bruens	Mesa State College	C	6-8	Jr
Tom Cook	Mesa State College	F	6-5	Jr
Mike Touchton	Western State College	C	6-8	Jr
Mark Willey	Fort Hays State	G	5-11	Sr
Shawn Williams	New Mexico Highlands	G	6-5	Jr

RMAC Individual Leaders

<u>Scoring Leaders</u>	<u>Avg</u>	<u>Field Goal Pct</u>	<u>Pct</u>
Josh Robinson, CSC	20.1	Mike Touchton, WSC	.657
Shawn Williams, NMHU	18.9	Dennis Bruens, MSC	.595
Mike Hall, ASC	18.0	Bryant Basmore, FHSU	.550

<u>3Pt Field Goal Pct</u>	<u>Pct</u>	<u>Free Throw Pct</u>	<u>Pct</u>
Mark Willey, FHSU	.470	Mike Hall, ASC	.910
J.J. Feddersen, CSC	.453	Russ Crafton, CSC	.851
Dan Shkapich, ASC	.452	Paul Kos, WSC	.804

<u>Rebounds</u>	<u>Avg</u>	<u>Assists</u>	<u>Avg</u>
Steve Fendry, WSC	10.8	Steve Fendry, WSC	5.2
Josh Robinson, CSC	8.6	Mark Rodriguez, NMHU	4.9
Tom Cook, MSC	8.1	Kevin Koch, WSC	4.7

<u>Steals</u>	<u>Avg</u>	<u>Blocks</u>	<u>Avg</u>
Mike Hall, ASC	2.9	Rick Barrett, CSM	1.4
Terry Darnell, NMHU	2.6	Manuel Ruiz, NMHU	1.2
Bryant Basmore, FHSU	2.4	Mike Touchton, WSC	1.1

Adams State College

February 6 at Alamosa, CO
9:00 p.m.
February 20 at Hays
8:00 p.m.



Location: Alamosa, CO
President: Dr. William Fulkerson
Athletic Director: Vivian Frausto
Sports Information Director: Lloyd Engen
SID Phones: Office: (719) 589-7121
Home: (719) 589-4415
Home Court (Capacity): Plachy Hall (3,200)
Press Box Phone: NA
Fax: (719) 589-7522
Enrollment: 2,500

Colors: Green & White
Nickname: Indians
Conference: Rocky Mountain Athletic
1991-92 Record: 14-11
Conference Record (Standing): 8-4 (T2nd)
Series Record: FHSU leads 5-3
Head Coach: Terry Layton
Record at Adams: First Season
Career record (years): 204-147 (11 years)
Assistant Coaches: Peter Stewart

Returning Lettermen (3)	Pos
*Dan Shkapich	G
Yul Wilson	F
Evan Noyes	F

Hgt	Cl	PPG	RPG/APG
6-3	Sr	14.2	2.3
6-6	Sr	9.7	5.8
6-3	Sr	9.9	2.3

Lettermen Lost (2)	Pos
*Mike Hall	G
*David Johnson	C

Hgt	PPG	RPG/APG
6-0	18.0	4.1#
6-5	4.8	6.4

*Denotes 1991-92 starter

#Denotes Assists

Newcomers (4)	Pos
Jerry Saddler	G
Wesley Clark	G
Robert Conley	F
Usani Phillips	G

Hgt	Cl	Hometown (Last School)
6-0	Jr	Lavonia, GA (Imperial Valley Coll)
6-2	Jr	Detroit, MI (Jordan College)
6-6	Jr	Detroit, MI (Jordan College)
5-10	Fr	Oakland, CA (Elizabeth HS)

1992-93 Schedule		
Date	Opponent	Time
11-23	Abilene Christian	TBA
11-27, 28	@Abilene Christ. Tourn	TBA
12-8	Ft. Lewis	TBA
12-12	@U. of SO Colorado	TBA
12-18, 19	@Metro Holiday Trny	TBA
12-21	@Air Force Academy	TBA
1-2	@CO-Colorado Springs	TBA
1-5	CO-Colorado Springs	TBA
1-8, 9	@Tom Byron Classic	TBA
1-12	@Fort Lewis	TBA
1-22	@Mesa State	8:00
1-23	@Western State	8:00
1-25	NM Highlands	8:00
1-27	U. of SO Colorado	TBA
1-29	Colo. Sch. of Mines	8:00
2-5	Chadron State	8:00
2-6	Fort Hays State	8:00
2-12	@Colo. Sch. of Mines	8:00
2-15	@NM Highlands	8:00
2-18	@Chadron State	8:00
2-20	@Fort Hays State	8:00
2-26	Western State	8:00
2-27	Mesa State	8:00
3-4, 5, 6	RMAC Tournament	TBA

All Times Local

1991-92 Results (14-11)		
ASC	Opponent	
79	New Mexico Highlands	86
47	Western State	62
83	Colo. Sch. of Mines	58
73	Fort Lewis	76
51	Air Force Academy	57
76	Western New Mexico	69
72	Southwestern Oklahoma	68
82	UC-Colorado Springs	35
100	Mesa State	79
68	Western State	80
86	New Mexico Highlands	66
99	Colo. Sch. of Mines	90
88	Fort Lewis	85
72	Chadron State	79
58	Fort Hays State	74
99	Colo. Sch. of Mines	56
65	Colorado College	70
71	New Mexico Highlands	84
92	Chadron State	70
79	Fort Hays State	78
83	Western State	71
60	Mesa State	59
67	Colorado College	71
106	Fort Lewis	96
62	Western State	72OT

Chadron State College

January 22 at Hays
8:00 p.m.
February 27 at Chadron, NE
9:00 p.m.



Location: Chadron, NE
President: Dr. Sam Rankin
Athletic Director: Brad Smith
Sports Information Director: Con Marshall
SID Phones: Office: (308) 432-6212
Home: (308) 432-4372
Home Court (Capacity): Armstrong Gym (2,500)
Press Box Phone: (308) 432-6345
Fax: (308) 432-6464
Enrollment: 3,700

Colors: Cardinal & White
Nickname: Eagles
Conference: Rocky Mountain Athletic
1991-92 Record: 16-14
Conference Record (Standing): 7-5 (4th)
Series Record: FHSU leads 6-0
Head Coach: Bob Wood
Record at Chadron: 58-88 (Six years)
Career record (years): same
Assistant Coach: Eric Glenn

Returning Lettermen (6)	Pos	Hgt	Cl	PPG	RPG/APG
Kraig Blomme	P	6-5	Sr	5.8	4.1
V.J. Brosius	P	6-6	Sr	Injured	
Russ Crafton	G	6-1	Jr	11.7	2.6
J.J. Feddersen	G	6-1	Jr	12.6	3.4
Jason Robinson	F	6-3	Jr	14.9	5.6
Tim Stevens	F	6-6	Jr	10.8	4.3

Lettermen Lost (3)	Pos	Hgt	PPG	RPG/APG
Josh Robinson	F	6-5	20.1	8.6
Eric Glenn	G	6-1	8.5	2.8#
Dan Beebe	G	6-1	5.7	2.0

#Denotes Assists

Newcomers (3)	Pos	Hgt	Cl	Hometown (Last School)
Tracy Heiman	P	6-6	Fr	Colorado Springs, CO (Liberty HS)
Jeff Tophoj	F	6-5	Fr	Oshkosh, NE (Garden County HS)
Chris Seip	F	6-4	Fr	Wallace, NE (Wallace HS)

1992-93 Schedule		
Date	Opponent	Time
11-20	Minot State	8:00
11-27,28	@Minot State Tourney	TBA
12-2	South Dakota Tech	8:00
12-7	@South Dakota Tech	7:30
12-9	Black Hills State	8:00
12-12	@Regis University	1:00
12-16	Denver University	7:30
1-6	Regis University	6:00
1-9	@Montana State	TBA
1-18	@Nebraska-Kearney	8:00
1-22	@Fort Hays State	8:00
1-23	@Colo. Sch. of Mines	8:00
1-25	@Denver University	7:00
1-28	Mesa State	8:00
1-30	Western State College	8:00
2-2	@Black Hills State	7:30
2-5	@Adams State	8:00
2-6	@NM Highlands	8:00
2-9	Nebraska-Kearney	8:00
2-12	@Mesa State	8:00
2-13	@Western State	8:00
2-18	Adams State	8:00
2-20	NM Highlands	8:00
2-27	Fort Hays State	8:00
2-28	Colo. Sch. of Mines	7:00
3-4,5,6	RMAC Tournament	TBA

All Times Local

1991-92 Results (16-14)	
CSC	Opponent
76	Western State
96	New Mexico Highlands
75	Fort Hays State
85	Black Hills State
82	Dickinson State
112	Minot State
92	South Dakota Tech
93	South Dakota Tech
82	Black Hills State
93	Denver University
117	Minot State
83	Denver University
88	Fort Hays State
104	Colo. Sch. of Mines
88	Mesa State
78	Western State
73	Regis University
79	Adams State
118	New Mexico Highlands
94	Mesa State
80	Western State
70	Adams State
89	New Mexico Highlands
108	Nebraska-Kearney
99	Colo. Sch. of Mines
69	Fort Hays State
99	Regis University
92	Nebraska-Kearney
93	*Peru State (NE)
67	*Concordia (NE)

*Postseason Games

Colorado School of Mines

January 25 at Hays
8:00 p.m.
February 26 at Golden, CO
9:00 p.m.



Location: Golden, CO
President: Dr. George Ansell
Athletic Director: R. Bruce Allison
Sports Information Director: Steve Smith
SID Phones: Office: (303) 273-3300
Home: (303) 980-8984
Home Court (Capacity): Volk Gymnasium (1,000)
Press Box Phone: TBA
Fax: (303) 273-3310
Enrollment: 2,957

Colors: Silver & Blue
Nickname: Orediggers
Conference: Rocky Mountain Athletic
1991-92 Record: 0-27
Conference Record (Standing): 0-12 (7th)
Series Record: FHSU leads 9-0
Head Coach: Keith Brown
Record at CSM: First Year
Career record (years): First Year
Assistant Coaches: Tim Harrison

Returning Lettermen (5)	Pos	Hgt	Cl	PPG	RPG/APG
John O'Connor	G	6-4	Sr	8.0	4.7
*Todd Kenyon	F-C	6-7	So	15.2	4.8
*Mark Ulmer	G	6-3	Jr	10.0	3.3
*Rick Barrett	C	6-8	Jr	5.2	4.1
*Mike Cieslinski	F-C	6-6	Jr	5.3	3.3

Lettermen Lost (1)	Pos	Hgt	PPG	RPG/APG
*Mark Gefroh	G	6-1	15.5	2.4

*Denotes 1991-92 starter

#Denotes Assists

Newcomers (3)	Pos	Hgt	Cl	Hometown (Last School)
Raul Varela	G	5-11	Fr	Littleton, CO (Chatfield HS)
Josh Smith	G	6-3	Fr	Lubbock, TX (Roosevelt HS)
Dwight Gilbert	G-F	6-6	Fr	Estes Park, CO (Estes Park HS)

1992-93 Schedule

Date	Opponent	Time
11-20,21	@Southern Colo. Tourney..	TBA
11-27,28	@Carroll (MT) Tourney ..	TBA
11-29	@Montana Tech	2:00
12-4,5	@NM Highlands Tourney..	TBA
12-8	Denver	7:00
12-10	Regis	7:00
12-21	@Regis	7:00
1-4,5,6	@Mesa St. Tourney	TBA
1-23	Chadron State	8:00
1-25	@Fort Hays State	8:00
1-29	@Adams State	8:00
1-30	@New Mexico Highlands...	8:00
2-5	@Western State	8:00
2-6	@Mesa State	8:00
2-8	@Denver	TBA
2-12	Adams State	8:00
2-13	New Mexico Highlands	8:00
2-19	Western State	8:00
2-20	Mesa State	8:00
2-26	Fort Hays State	8:00
2-28	@Chadron State	7:00
3-4,5,6	RMAC Tournament	TBA

All Times Local

1991-92 Results (0-27)

CSM	Opponent	
47	Fort Hays State	107
78	Fort Lewis	103
58	Adams State	83
46	Colo.-Colorado Springs	63
113	C. Methodist (MO)	114
75	Southern Colorado	112
50	Tarleton State	81
66	Denver University	90
78	Colorado College	93
74	Regis	100
68	Dordt (IA)	89
74	Wayne State	94
85	Chadron State	104
70	Fort Hays State	90
90	Adams State	99
95	New Mexico Highlands	112
81	Colorado College	112
82	Western State	84
75	Mesa State	87
56	Adams State	99
73	New Mexico Highlands	96
102	Regis	106
69	Western State	93
72	Mesa State	88
79	Denver University	103
81	Fort Hays State	100
90	Chadron State	99

Mesa State College

January 30 at Hays
8:00 p.m.
February 13 at Grand Junction, CO
9:00 p.m.



Location: Grand Junction, CO
President: Dr. Ray Kieft
Athletic Director: Jay Jefferson
Sports Information Director: Steve Kirkham
SID Phones: Office: (303) 241-1716
Home: (303) 241-5268
Home Court (Capacity): Saunders Field House
(3,800)

Press Box Phone: N/A
Fax: (303) 248-1980
Enrollment: 4,400

Colors: Maroon & White
Nickname: Mavericks
Conference: Rocky Mountain Athletic
1991-92 Record: 11-13
Conference Record (Standing): 4-8 (6th)
Series Record: FHSU leads 3-2
Head Coach: Doug Schakel
Record at Mesa: 226-163 (14 years)
Career record (years): 428-248 (29 years)
Assistant Coach: Jim Heaps

Returning Lettermen (7)	Pos	Hgt	Cl	PPG	RPG/APG
Tom Cook	F	6-5	Sr	17.8	8.3
Dennis Bruens	C	6-8	Sr	16.9	7.7
Beau Smith	G	6-4	So	11.3	4.1
Guy Miller	G	6-3	Sr	11.0	3.8
Davey Balkenbush	G	6-1	Sr	4.3	1.9
Mike Prestel	F	6-6	Sr	6.6	4.1
Shandy Hauer	G	5-7	So	4.0	1.6

Lettermen Lost none

Newcomers (4)	Pos	Hgt	Cl	Hometown
Tim Blanchard	F	6-6	Fr	Loma, CO
Reagan Hahn	C	6-7	Fr	Deer Trail, CO
Jason McClurkin	F	6-6	Fr	Littleton, CO
Brian Valant	F	6-5	Fr	Golden, CO

1992-93 Schedule		
Date	Opponent	Time
11-21	@Fort Lewis	8:00
11-27,28	Mesa Thanksgiving Tourney 6&8	
12-4,5	@Southern Colo. Tourney . TBA	
12-9	@Air Force Academy	7:30
12-12	Fort Lewis	7:30
12-19	@Colo.-Colo. Springs	1:00
12-29,30	Ski Country Classic	6 & 8
1-4,5,6	Mesa St. Round Robin	6 & 8
1-11	Colo.-Colo. Springs	7:30
1-15	@Western State	7:00
1-22	Adams State	8:00
1-23	NM Highlands	8:00
1-28	@Chadron State	8:00
1-30	@Fort Hays State	8:00
2-6	Colo. Sch. of Mines	8:00
2-12	Chadron State	8:00
2-13	Fort Hays State	8:00
2-17	Western State	8:00
2-20	@Colo. Sch. of Mines	8:00
2-26	@NM Highlands	8:00
2-27	@Adams State	8:00
3-4,5,6	RMAC Tournament	TBA

All Times Local

1991-92 Results (11-13)		
MSC	Opponent	
107	Fort Lewis	95
71	Fort Hays State	93
87	New Mexico Highlands	69
101	Dallas	75
94	Phillips	111
56	Colo.-Colorado Springs	53
72	Air Force	74
84	Fort Lewis	87
88	Huston-Tillotson	60
80	Concordia	75
72	?Colo.-Colorado Springs	66OT
79	Adams State	100
68	New Mexico Highlands	70
90	?Chadron State	88
96	?Fort Hays State	70
79	Western State	76
87	Colo. Sch. of Mines	75
81	Chadron State	94OT
46	Fort Hays State	85
93	Fort Lewis	85
88	Colo. Sch. of Mines	72
96	New Mexico Highlands	80
59	Adams State	60
77	Western State	78OT

?Mesa forfeits due to ineligible player.

New Mexico Highlands

February 4 at Las Vegas, NM
9:00 p.m.
February 18 at Hays
8:00 p.m.



Location: Las Vegas, NM
President: Gilbert Sanchez
Athletic Director: Rob Evers
Sports Information Director: Jesse Gallegos
SID Phones: Office: (505) 454-3001
Home: (505) 425-8882
Home Court (Capacity): John A. Wilson Complex (4,200)
Press Box Phone: N/A
Fax: (505) 454-3001
Enrollment: 2,572

Colors: Purple & White
Nickname: Cowboys
Conference: Rocky Mountain Athletic
1991-92 Record: 10-18
Conference Record (Standing): 5-7 (5th)
Series Record: FHSU leads 3-1
Head Coach: Henry Sanchez
Record at NMH: 122-139 (10 years)
Career record (years): same
Assistant Coach: Darren Sanchez

Returning Lettermen (5)	Pos	Hgt	Cl	PPG	RPG/APG
Scott Harrison	G	6-1	Jr	4.3	2.0#
Manuel Ruiz	C	6-10	Sr	4.9	5.1
Shannon Sims	G	6-2	Sr	3.5	1.6
Victor Walker	F	6-4	Jr	3.5	2.1
Shawn Williams	G	6-5	Sr	18.8	6.4

Lettermen Lost (5)	Pos	Hgt	PPG	RPG/APG
Brian Echols	F	6-4	16.4	7.0
Terry Darnell	G	6-3	10.7	4.2#
Mark Rodriguez	G	6-0	7.0	4.9#
Robert Morris	C	6-6	6.6	5.8
Jason Rizek	G/F	6-4	4.6	1.8

#Denotes Assists

Newcomers (3)	Pos	Hgt	Cl	Hometown (Last School)
Brian Fields	C	6-7	Jr	Tucson, AZ (Eastern Arizona JC)
Ernest Jenkins	G	5-9	So	Albuquerque, NM (Xavier (La.) Univ)
Tony Valencia	G	6-0	Jr	Socorro, NM (Colorado College)

Date	Opponent	Schedule	Time
11-23	Western New Mexico		8:00
11-25	@Colorado Christian		7:00
11-27	@Fort Lewis		7:00
12-1	@U. of New Mexico		7:30
12-4,5	Brad Darnell Tourny		6&8
12-14	@Western New Mexico		7:30
1-7,8,9	@Alaska Seawolf Jam		TBA
1-12	Colorado Christian		8:00
1-13	Eastern New Mexico		8:00
1-15	@Panhandle State		7:30
1-19	Panhandle State		7:30
1-22	@Western State		8:00
1-23	@Mesa State		8:00
1-25	@Adams State		8:00
1-27	@Eastern New Mexico		7:30
1-30	Colo. Sch. of Mines		8:00
2-4	Fort Hays State		8:00
2-6	Chadron State		8:00
2-9	Colorado College		8:00
2-12	@Colorado College		8:00
2-13	@Colo. Sch. of Mines		8:00
2-15	Adams State		8:00
2-18	@Fort Hays State		8:00
2-20	@Chadron State		8:00
2-26	Mesa State		8:00
2-27	Western State		8:00
3-4,5,6	RMAC Tournament		TBA
All Times Local			

NMH	1991-92 Results (10-18)
86	Adams State 79
93	Chadron State 96
69	Mesa State 87
82	Colo.-Colorado Springs 60
83	Western New Mexico 100
80	SW Oklahoma State 97
97	Western New Mexico 69
98	Colorado Christian 99
80	Denver University 104
73	Colo.-Colorado Springs 81
89	Colorado Christian 79
64	Western State 78
70	Mesa State 68
66	Adams State 86
81	Colorado College 89
112	Colo. Sch. of Mines 95
65	Fort Hays State 81
100	Chadron State 117
87	Eastern New Mexico 83
96	Colo. Sch. of Mines 73
84	Adams State 71
79	Fort Hays State 87OT
92	Chadron State 89
80	Mesa State 96
62	Western State 63
84	Eastern New Mexico 92
52	Colorado College 59
94	Denver University 101

Western State College

January 28 at Hays
8:00 p.m.
February 12 at Gunnison, CO
9:00 p.m.



Location: Gunnison, CO
President: Dr. Kaye Howe
Athletic Director: Dr. Curt Mallory
Sports Information Director: J.W. Campbell
SID Phones: Office: (303) 943-3035
Home: (303) 641-1274
Home Court (Capacity): Paul W. Wright
Gymnasium (2,400)
Press Box Phone: N/A
Fax: (303) 943-7069

Enrollment: 2,600
Colors: Crimson & Slate
Nickname: Mountaineers
Conference: Rocky Mountain Athletic
1991-92 Record: 19-10
Conference Record (Standing): 8-4 (T 2nd)
Series Record: Tied 2-2
Head Coach: Dr. Jay Helman
Record at Western (years): 34-51 (Three years)
Career record (years): same
Assistant Coaches: Jim Russell, Dr. Greg Schick

Returning Lettermen (4)	Pos	Hgt	Cl	PPG	RPG/APG
Scott Wadsworth.....	G	6-2	Sr	5.0	2.2
Mike Touchton	F	6-8	Sr	15.4	5.0
Lucius Wall, III	G	5-11	Sr	8.0	2.7
Steve Fendry	F	6-7	Jr	15.1	10.4

Lettermen Lost (1)	Pos	Hgt	PPG	RPG/APG
Paul Kos	G	5-11	12.6	2.0

#Denotes Assists

Newcomers (4)	Pos	Hgt	Cl	Hometown (Last School)
Ken Clay	G	5-10	Fr	Hotchkiss, CO (Hotchkiss HS)
Wil Pierce	G	6-1	Fr	Colo. Springs, CO (Liberty HS)
Gabe Trujillo	G	5-10	Fr	Denver, CO (Lincoln HS)
Erich Allen	C	6-7	Jr	Costa Mesa, CA (Orange Coast JC)

1992-93 Schedule		
Date	Opponent	Time
11-20	@Fort Lewis.....	8:00
11-27,28	@U. of Denver Tourney	TBA
12-4	Colo. Christian	7:30
12-12	U. of Denver.....	7:30
12-15	@Metro. State.....	7:00
12-16	@Colo. Christian	7:00
12-29,30	@Mesa State Tourney....	TBA
1-8	Fort Lewis.....	7:30
1-9	Metro. State	7:30
1-15	Mesa State	7:30
1-18	U. of SO Colorado	7:30
1-22	New Mexico Highlands.	8:00
1-23	Adams State	8:00
1-28	@Fort Hays State.....	8:00
1-30	@Chadron State.....	8:00
2-3	Colorado College	8:00
2-5	Colo. Sch. of Mines	8:00
2-12	Fort Hays State.....	8:00
2-13	Chadron State	8:00
2-17	@Mesa State	8:00
2-19	@Colo. Sch. of Mines....	8:00
2-23	@Colorado College.....	7:00
2-26	@Adams State	8:00
2-27	@New Mexico Highlands	8:00
3-4,5,6	RMAC Tournament	TBA

All Times Local

1991-92 Results (19-10)	
WSC	Opponent
73	Chadron State
62	Adams State
89	Fort Lewis
74	Fort Lewis
91	So. Colorado
100	Fort Lewis
58	Regis University
80	Metro State
81	Regis University
63	Sonoma State
69	Cal. State Hayward
78	New Mexico Highlands
80	Adams State
82	UC-Colorado Springs
67	Fort Hays State
91	Chadron State
76	?Mesa State
84	Colo. Sch. of Mines
83	Colorado College
58	Fort Hays State
70	Chadron State
93	Colo. Sch. of Mines
69	Colorado College
71	Adams State
63	New Mexico Highlands
78	Mesa State
75	*Western New Mexico
72	*Adams State
54	*Wis.-Stevens Point

*Postseason Games
?Mesa forfeits wins due to ineligible player

Non-Conference Opponents

Colorado-Colorado Springs

November 20 at Hays, 8:00 p.m.

Location: Colorado Springs, CO

President: Dwayne Nuzum

Athletic Director: Ron Wisner

Sports Information Director: Nanette Anderson

SID Phones: Office: (719) 593-3647

Home: (719) 260-7364

Home Court (Capacity): The Gold Pit (500)

Fax: (719) 593-3683

Enrollment: 2,600

Colors: Blue & Gold

Nickname: Gold

Conference: Colorado Athletic Conference

1991-92 Record: 7-21

Conference Record (Standing): 0-12

Series Record: First Meeting

Head Coach: Mark Felix

Record at UCCS (years): 7-21 (One year)

Career record (years): same

Top Returners: Jason Shea, G, 6-1, 9.3ppg, 3.2apg,

Roger Cavazos, F/G, 6-5, 7.8ppg, 5.9rpg

Top Newcomers: Bryan Yaninek, F, 6-6, Jr,

Georgia Military, Doug Winans, F, 6-8, Fr,

Cheyenne, WY

Pittsburg State University

Country Kitchen Classic, Hays, KS

December 5 at Pittsburg, 7:30 p.m.

Location: Pittsburg, KS

President: Dr. Donald W. Wilson

Athletic Director: Bill Samuels

Sports Information Director: Shawn Ahearn

SID Phones: Office: (316) 235-4148

Home: (316) 232-8114

Home Court (Capacity): John Lance Arena(6,500)

Fax: (316) 235-4149

Enrollment: 6,516

Colors: Crimson & Gold

Nickname: Gorillas

Conference: Mid-America Intercollegiate

Athletics Association

1991-92 Record: 21-8

Conference Record (Standing): 10-6 (T3rd)

Series Record: FHSU leads 69-63

Head Coach: Dennis Hill

Record at Pittsburg (years): 43-39(Three years)

Career record (years): same

Assistant Coaches: Kevin Muff

Top Returner: Mark Johnson, G, 6-0, 13.4ppg

Top Newcomers: Michael Lemons, G, 6-1, Jr,

Tennessee State

Cameron University

Country Kitchen Classic Hays, KS

Location: Lawton, OK

President: Dr. Don Davis

Athletic Director: Jerry Hrcnciar

Sports Information Director: Hank Bradley

SID Phones: Office: (405) 581-2303

Home: (405) 355-7109

Home Court (Capacity): Aggie Gym (1,800)

Press Box Phone: (405) 581-5529

Fax: (405) 581-5537

Enrollment: 6,000

Colors: Black & Gold

Nickname: Aggies

Conference: Lone Star Conference

1991-92 Record: 8-19

Conference Record (Standing): 4-8 (6th)

Series Record: FHSU leads 1-0

Head Coach: Jerry Stone

Record at Cameron (years): 38-46 (Three years)

Career record (years): same

Assistant Coaches: Aubrey Green

Top Returners: John Marinko, F, 6-6, 11.5ppg,

Robert Torrence, C, 6-5, 18.3ppg

Top Newcomers: Steve Kirby, G, 6-2, Jr, Cerro

Coso JC, Jim Coates, G, 6-3, Jr, Pearl River JC

Tabor College

November 24 at Hays, 7:30 p.m.

Location: Hillsboro, KS

President: Dr LaVon Balzer

Athletic Director: Gary Myers

Sports Information Director: none

Home Court (Capacity): Tabor College

Gym(1,800)

Fax: (316) 947-2607

Enrollment: 450

Colors: Royal Blue & Gold

Nickname: Bluejays

Conference: Kansas Collegiate Athletic

1991-92 Record: 15-14

Conference Record (Standing): 13-5 (2nd)

Series Record: FHSU leads 7-0

Head Coach: Don Brubacher

Record at Tabor (years): 202-158

Career record (years): same

Assistant Coaches: Bob Godsey, Dale Shewey

Top Returners: Bryan Vincent, G/F, 6-4, 11.4ppg,

Jesse Herrmann, G, 6-4, 10.6ppg

Top Newcomers: Travis Walker, G, 6-2, Fr,

Ingalls, KS, Jeremy Hicks, C, 6-8, Fr, Enid, OK

Baker University

Metropolitan State Tournament

January 13 at Hays, 7:30 p.m.

Location: Baldwin City, KS

President: Dan Lambert

Athletic Director: Charlie Richard

Sports Information Director: John Fuller

SID Phones: Office: (913) 594-6451 x330

Home Court (Capacity): Collins Center (3,000)

Enrollment: 1,867

Colors: Black & Orange

Nickname: Wildcats

Conference: Heart of America

1991-92 Record: 12-21

Conference Record (Standing): 3-9 (6th)

Series Record: Baker leads 6-3

Head Coach: Rick Weaver

Record at Baker (years): 100-115 (Seven years)

Career record (years): same

Assistant Coaches: Dennis Darting

Top Returners: Chad Wilkins, F, 6-6, 9.9ppg,

Marcus Willhote, G, 6-0, 7.3ppg

Top Newcomers: Brian Sheldon, C, 6-5, Fr,

Baldwin City, KS, Kirk Hipple, F, 6-5, Fr, San

Diego, CA

Christ College-Irvine

Metropolitan State Tournament

Location: Irvine, CA

President: Dr. D. Ray Halm

Athletic Director: Mary Holl

Sports Information Director: Amanda Saltin

SID Phones: Office: (714) 854-8002

Home Court (Capacity): CCI Arena (2,000)

Fax: (714) 854-6854

Enrollment: 700

Colors: Green & Gold

Nickname: Eagles

Conference: Golden State Athletic Conference

1991-92 Record: 14-16

Conference Record (Standing): 5-7 (4th)

Series Record: First Meeting

Head Coach: Greg Marshall

Record at CCI (years): 27-34 (Three years)

Career record (years): same

Non-Conference Opponents

Assistant Coaches: Mike Moore, Matt Micek
 Top Returners: D'Andre Brown, F, 6-6, 17.5ppg,
 Brian Hazelwood, F, 6-4, 8.7ppg
 Top Newcomers: Agustin Heredia, G, 6-0, Jr,
 Costa Mesa Orange Coast Coll., Brian Tollefson,
 F, 6-7, Jr, Phoenix College

Metropolitan State

Metropolitan State Tournament

Location: Denver, CO
 President: Dr. Thomas Brewer
 Athletic Director: William Helman
 Sports Information Director: Greg Smith
 SID Phones: Office: (303) 556-3431
 Home: (303) 452-4223
 Home Court (Capacity): Auraria Events
 Center (3,000)
 Press Box Phone: (303) 556-8593
 Fax: (303) 556-2720
 Enrollment: 17,500
 Colors: Navy Blue & Columbia Blue
 Nickname: Roadrunners
 Conference: Colorado Athletic Conference
 1991-92 Record: 16-12
 Conference Record (Standing): 10-2 (1st)
 Series Record: First Meeting
 Head Coach: Bob Hull
 Record at Metro (years): 131-169 (Seven years)
 Career record (years): same
 Assistant Coaches: Joe Strain, Craig Ross
 Top Returners: Calvin McCoy, G, 6-1, 15ppg,
 Myron Simms, G, 6-3, 14.5ppg
 Top Newcomers: Trent Brotherson, C, 6-8, Fr,
 Littleton, CO, Jeff Eck, G, 6-1, Fr, Wichita, KS

Washburn University

December 3 at Hays, 8:00 p.m.

Location: Topeka, KS
 President: Hugh Thompson
 Athletic Director: Richard Johanningmeier
 Sports Information Director: Mary Beth Brutton
 SID Phones: Office: (913) 231-1010 x1791
 Home: (913) 271-0788
 Home Court (Capacity): Lee Arena(4,200)
 Press Box Phone: (913) 231-1010 x1754
 Fax: (913) 231-1091
 Enrollment: 6,500
 Colors: Yale Blue & White
 Nickname: Ichabods
 Conference: Mid-America Intercollegiate
 Athletics Association
 1991-92 Record: 27-5
 Conference Record (Standing): 12-4 (1st)
 Series Record: Washburn leads 71-52
 Head Coach: Bob Chipman
 Record at Washburn (years): 303-110 (13 years)
 Career record (years): same
 Assistant Coaches: Torrey Head, Ron McHenry
 Top Returners: David Johnson, F, 6-4, 9.5ppg,
 Todd Alexander, G, 6-3, 9ppg, Malcom Daniels,
 F, 6-2, 9.3ppg
 Top Newcomers: Jemi Johnson, F, 6-6, Jr, Mis-
 sissippi County CC, Clarence Tyson, F, 6-7, Jr,
 Kilgore JC

Rockhurst College

December 7 at KC, MO, 7:30 p.m.

February 2 at Hays, 7:30 p.m.

Location: Kansas City, MO
 President: Fr. Thomas Savage
 Athletic Director: Frank Diskin
 Sports Information Director: Sid Bordman
 SID Phones: Office: (816) 926-4141
 Home: (913) 469-6750
 Home Court (Capacity): Mason-Halpin

Fieldhouse (3,000)

Fax: (816) 926-4666
 Enrollment: 1,200
 Colors: Blue & White
 Nickname: Hawks
 Conference: None
 1991-92 Record: 13-17
 Series Record: FHSU leads 8-4
 Head Coach: Frank Diskin
 Record at Rockhurst (years): 57-66(Four years)
 Career record (years): 212-98 (16 years)
 Assistant Coaches: Chris Oestreich, Kevin
 Hackerott
 Top Returners: Alex Brickner, G, 6-2, 12.3ppg,
 John Tepe, F, 6-6, 11.4ppg
 Top Newcomers: Brent Johnson, F, 6-6, Jr, Jeff
 Toenisketter, F, 6-7, Jr

Emporia State

December 12 at Hays, 7:30 p.m.

December 19 at Emporia, 8:00 p.m.

Location: Emporia, KS
 President: Dr. Robert E. Glennen
 Athletic Director: Dr. William Quayle
 Sports Information Director: Dan Ballou
 SID Phones: Office: (316) 341-5454
 Home: (316) 767-5859
 Home Court (Capacity): White Auditorium(3700)
 Fax: (316) 341-5589
 Enrollment: 6,034
 Colors: Old Gold & Black
 Nickname: Hornets
 Conference: Mid-America Intercollegiate
 Athletics Association
 1991-92 Record: 18-14
 Conference Record (Standing): Not eligible
 Series Record: FHSU leads 74-69
 Head Coach: Ron Slaymaker
 Record at Emporia (years): 390-278 (22 years)
 Career record (years): same
 Assistant Coaches: Felix Grimmer
 Top Returners: Andy Uphoff, F, 6-8, 14.8ppg,
 James McCallop, G, 6-2, 17.2ppg
 Top Newcomers: Celso Doria, F, 6-8, Jr, State
 Fair CC

Nebraska-Kearney

January 19 at Kearney, NE, 8:00 p.m.

February 9 at Hays, 8:00 p.m.

Location: Kearney, NE
 President: William Nester
 Athletic Director: Dick Beechner
 Sports Information Director: Brent Robinson
 SID Phones: Office: (308) 234-8334
 Home: (308) 237-7856
 Home Court (Capacity): Health & Sports Center
 (6,000)
 Press Box Phone: (308) 234-8334
 Fax: (308) 234-8832
 Enrollment: 9,000
 Colors: Old Gold & Royal Blue
 Nickname: Lopers
 Conference: None
 1991-92 Record: 9-19
 Series Record: FHSU leads 53-23
 Head Coaches: Jerry Hueser, Tom Kropp
 Record at Kearney (years): 438-215, 30-28
 Career record (years): same
 Top Returners: Brian Nielson, C, 6-7, 17.9ppg,
 Mike Mueller, C, 6-6, 16.1ppg
 Top Newcomers: Jamie Tomlin, G, 6-1, Jr,
 Western Nebraska CC

Individual Basketball Records

Individual Single Game

Most Points:	42, Mike Pauls vs. Hastings, NE, Jan. 23, 1979 (18 FG, 6 FT)
Most Field Goals Scored (All):	20, Fred Andregg vs. Rocky Mountain, MT, Dec. 30, 1967
Most Field Goals Scored (3-Point): ..	8, Steve Blackmon vs. Oral Roberts, Dec. 6, 1989
Most Field Goals Attempted (All): ..	29, Damian Evans vs. Colorado Mines, Feb. 3, 1991
Most Field Goals Attempted (3-Pt): ..	17, Steve Blackmon vs. Pittsburg State, Feb. 17, 1989
Most Free Throws Made:	19, Sam McDowell vs. Central Oklahoma, Dec. 28, 1963
Most Free Throws Attempted:	24, Marvin Andrews vs. NW Oklahoma State, Dec. 8, 1953
Most Rebounds:	26, Frank Dowdell vs. Colorado State, Jan. 25, 1989
Most Assists:	18, Raymond Lee vs. Waynesburg, PA, Mar. 17, 1984

Individual Single Season

Most Points:	747, Mark Harris, 1986-87
.....	(32 games, 269 2-pt, 27 3-pt, 128 FT)
Highest Scoring Average:	24.3, Sam McDowell, 1963-64, (15 games, 364 points)
Most Field Goals Scored (All):	322, Edgar Eason, 1984-85, (38 games, 601 attempts)
Most Field Goals Attempted (All):	601, Edgar Eason, 1984-85, (38 games, 322 made)
Most Field Goals Made (3-Pt):	110, Steve Blackmon, 1988-89, (30 games, 272 attempts)
Most Field Goals Attempted (3-Pt):	272, Steve Blackmon, 1988-89, (30 games, 110 made)
Highest Field Goal Percentage (All): ..	.646, Thomas Hardnett, 1986-87, (32 games, 144 of 223)
Highest Field Goal Percentage (3-Pt): ..	.605, Mark Willey, 1989-90, (29 games, 49 of 81)
Most Free Throws Made:	169, Mark Wilson, 1978-79, (32 games, 239 attempts)
.....	169, Sam McDowell, 1963-64, (28 games, 233 attempts)
Most Free Throws Attempted:	239, Mark Wilson, 1978-79, (32 games, 169 made)
Highest Free Throw Percentage:897, Dean Larson, 1960-61, (19 games, 105 of 117)
Most Rebounds:	356, John Channel, 1962-63, (28 games)
.....	356, Barton Snow, 1975-76, (28 games)
Highest Rebound Average:	13.3, Barton Snow, 1972-73, (19 games, 247 rebounds)
Most Assists:	237, Raymond Lee, 1982-83, (36 games)
Highest Assist Average:	6.6, Raymond Lee, 1982-83, (36 games)
Most Personal Fouls:	131, Willie Shaw, 1982-83, (36 games)
Most Disqualifications:	10, Willie Shaw, 1982-83, (36 games)

Individual Career

Most Points:	1,631, Mark Wilson, 1978-81
Highest Scoring Average:	21.2, Mark Harris, 1986-88, (65 games, 2 seasons)
Most Field Goals Scored (All):	549, Raymond Lee, 1982-86, (145 games, 1,172 attempts)
Most Field Goals Scored (3-Point):	224, Mark Willey, 1988-92, (117 games, 478 attempts)
Most Field Goals Attempted (All):	1,320, Mark Wilson, 1978-81, (86 games, 591 made)
Most Field Goals Attempted (3-Pt):	531, Steve Blackmon, 1988-90, (60 games, 216 made)
Highest Field Goal Percentage (All): ..	.605, Nate Rollins, 1982-84, (65 games, 506 of 837)
Highest Field Goal Percentage (3-Pt): ..	.469, Mark Willey, (117 games, 224 of 478)
Most Free Throws Made:	449, Mark Wilson, 1978-81, (86 games, 642 attempts)
Most Free Throws Attempted:	642, Mark Wilson, 1987-81, (86 games, 449 made)
Highest Free Throw Percentage:861, Mark Harris, 1986-88, (65 games, 230 of 267)
Most Rebounds:	980, Barton Snow, 1971-73, 74-76
Most Assists:	899, Raymond Lee, 1982-86, (145 games)
Most Personal Fouls:	326, Glenn Conner, 1947-51
Most Disqualifications:	30, Glenn Conner, 1947-51

Team Basketball Records

Wins & Losses

Most Consecutive Victories	22, 1980-81
Most Consecutive Victories (One Season)	22, 1980-81
Most Consecutive Home Victories	26, 1980-81
Most Consecutive Road Victories	13, 1984-85
Most Consecutive Home Losses	5, 1957-58
Most Consecutive Road Losses	12, 1963-65
Most Wins In A Single Season	35, 1983-84 & 1984-85

Scoring

Most Points Scored, Single Game:	122 vs. Kearney State, Dec. 4, 1962, (FHSU 122, KSC 88)
Most Points Scored, Season:	3,045, 1984-85, (38 games)
Fewest Points Scored, Single Game:	27, vs. Oklahoma City, 1949-50, (OCU 36, FHSU 27)
Highest Season Per Game Scoring Average:	87.2, 1963-64 (19 games, 1,657 points)
Lowest Season Per Game Scoring Average (since 1946):	57.7, 1946-47 (19 games, 1,097 points)
Most Points In One Half:	66, vs. Emporia State, Feb. 8, 1986, (FHSU 103, ESU 72)
Most Points Scored, Single Game Both Teams:	222, Nov. 30, 1963, (FHSU 112, Southern Colorado 110)
Most Points by FHSU, Two Consecutive Games:	230, Dec. 4, 1962 (FHSU 122, Kearney State 88) 230, Dec. 13, 1962 (FHSU 108, Colorado College 63)
Most Field Goals, Single Game (All):	53, vs. Kearney State, Dec. 4, 1962
Most Field Goals, Single Game (3-point):	15, vs. Wayne State, Feb. 16, 1990
Most Field Goals, Season (All):	1,237, 1984-85 (38 games)
Most Field Goals, Season (3-point):	236, 1990-91 (30 games)
Most Free Throws Made, Single Game:	41, vs. Adams State, Dec. 19, 1961
Most Free Throws Attempted, Single Game:	69, vs. Southwestern, Feb. 9, 1963
Most Free Throws Made, Season:	611, 1962-63 (28 games)
Most Free Throws Attempted, Season:	907, 1952-53 (22 games)

Rebounding

Most Rebounds, Single Game:	74, vs. Kearney State, Jan. 14, 1974
Most Rebounds, Season:	1,466, 1982-83 (36 games)
Highest Season Per Game Rebounding Average:	57.2, 1959-60 (21 games)

Shooting Percentages

Highest Season Field Goal Percentage (All):546, 1986-87 (32 games, 1132 of 2075)
Highest Season Field Goal Percentage (3-Point):436, 1989-90 (30 games, 223 of 511)
Highest Season Free Throw Percentage:747, 1969-70 (23 games, 449 of 601)

Tiger Honor Roll

(We have made an effort to tabulate a list of Fort Hays State basketball players who have made All-America, CoSIDA Academic All-America, All-District 10, All-Central States Intercollegiate Conference and All-Rocky Mountain Athletic Conference. Any additions or corrections to the names listed will be appreciated.)

NAIA All-America

- 1962-63 Herb Stange, Sterling, KS (3rd)
- 1963-64 Sam McDowell, Smith Center, KS (3rd)
- 1964-65 Cleat Doyel, Rush Springs, OK (HM)
- 1968-69 Bill Greving, Prairie View, KS (HM)
- 1970-71 Daryl Stockstill, Geneseo, KS (HM) & Dave Okeson, Weskan, KS (HM)
- 1974-75 Ed Schumacher, Hays, KS (HM) & Keith Harper, Colby, KS (HM)
- 1980-81 Mark Wilson, Columbus, OH (HM)
- 1982-83 Nate Rollins, Detroit, MI (3rd)
- 1983-84 Nate Rollins, Detroit, MI (1st) & Raymond Lee, Detroit, MI (2nd)
- 1984-85 Edgar Eason, Tuscaloosa, AL (1st) & Raymond Lee, Detroit, MI (1st)
- 1985-86 Fred Campbell, Macon, GA (2nd) & Raymond Lee, Detroit, MI (3rd)
- 1986-87 Mark Harris, Flint, MI (HM) 1987-88 Mark Harris, Flint, MI (2nd) & Ronnie Thompkins, Jackson, MI (HM)
- 1990-91 Damian Evans, Chicago IL (HM)

CoSIDA Academic All-America

- 1974-75 Keith Harper, Colby, KS (HM)
- 1975-76 Dave Royse, Mesa, AZ
- 1977-78 Mike Pauls, Buhler, KS

All-District 10

- 1963-64 Sam McDowell, Smith Center, KS
- 1968-69 Bill Greving, Prairie View, KS
- 1969-70 Daryl Stockstill, Geneseo, KS
- 1970-71 Daryl Stockstill, Geneseo, KS & Dave Okeson, Weskan, KS
- 1971-72 Dave Okeson, Weskan, KS
- 1974-75 Ed Schumacher, Hays, KS
- 1975-76 Ed Schumacher, Hays, KS & Barton Snow, Denver, CO
- 1978-79 Mike Pauls, Buhler, KS
- 1980-81 Max Hamblin, Page, AZ & Mark Wilson, Columbus, OH
- 1981-82 Rege Klitzke, Russell, KS
- 1982-83 Nate Rollins, Detroit, MI, & Raymond Lee, Detroit, MI & Rege Klitzke, Russell, KS

- 1983-84 Nate Rollins, Detroit, MI & Raymond Lee, Detroit, MI
- 1984-85 Edgar Eason, Tuscaloosa, AL & Raymond Lee, Detroit, MI
- 1985-86 Fred Campbell, Macon, GA & Raymond Lee, Detroit, MI
- 1986-87 Mark Harris, Flint, MI
- 1987-88 Mark Harris, Flint, MI & Ronnie Thompkins, Jackson, MI
- 1988-89 Brett Buller, Golden, CO
- 1989-90 Troy Minch, Denver, CO
- 1990-91 Damian Evans, Chicago, IL

All-Rocky Mountain Athletic Conference

- 1990-91 Damian Evans, Chicago, IL (1st)
- 1991-92 Bryant Basemore, W. Memphis, AR (1st) & Damian Evans, Chichago, IL (1st) & Mark Willey, Abilene, KS (2nd)

All-Central States Intercollegiate Conference

- 1976-77 Dave Stoppel, Wilson, KS
- 1977-78 Mark Wilson, Columbus, OH
- 1978-79 Mike Pauls, Buhler, KS & Mark Wilson, Columbus, OH
- 1980-81 Max Hamblin, Page, AZ & Mark Wilson, Columbus, OH
- 1981-82 Rege Klitzke, Russell, KS
- 1982-83 Rege Klitzke, Russell, KS & Nate Rollins, Detroit, MI
- 1983-84 Raymond Lee, Detroit, MI & Nate Rollins, Detroit, MI
- 1984-85 Edgar Eason, Tuscaloosa, AL & Raymond Lee, Detroit, MI
- 1985-86 Fred Campbell, Macon, GA & Raymond Lee, Detroit, MI
- 1986-87 Mark Harris, Flint, MI
- 1987-88 Mark Harris, Flint, MI & Ronnie Thompkins, Jackson, MI
- 1988-89 Brett Buller, Golden, CO

Additional CSIC Honors

- 1982-83 Bill Morse, Coach of the Year
Nate Rollins, Player of the Year & Newcomer of the Year
Raymond Lee, Freshman of the Year
- 1983-84 Bill Morse, Coach of the Year
- 1984-85 Bill Morse, Coach of the Year
- 1986-87 Mark Harris, Newcomer of the Year

Past Years 1956-Present

1991-92 Basketball Results(18-10)

Date	Opponent	Site	Result
11-22	#Colorado Mines	H	W 107-47
11-23	#Mesa State	H	W 93-71
11-24	#Chadron State	H	W 93-75
11-29	%Abilene Christian	H	W 91-69
11-30	%Angelo State	H	L 68-76
12-10	Washburn University	H	L 74-75
12-13	@Angelo State	A	L 68-76
12-14	@Abilene Christian	N	L 94-99
12-20	*West Texas State	N	W 68-65
12-21	*Washburn University	A	L 85-101
1-10	Chadron State	A	W 93-88
1-13	Colorado Mines	H	W 90-70
1-17	Western State College	A	L 63-67
1-18	\$Mesa State	A	W 70-96
1-23	New Mexico Highlands	H	W 81-65
1-25	Adams State	H	W 74-58
1-27	Washburn University	A	L 60-84
1-30	Western State	H	W 80-58
2-1	Meas State College	H	W 85-46
2-3	Emporia State	A	L 70-79
2-7	New Mexico Highlands	A	W 87-79OT
2-8	Adams State	A	L 78-79
2-14	Colorado School of Mines	A	W 100-81
2-17	Chadron State	H	W 109-69
2-22	Wayne State	H	W 86-62
2-24	Emporia State	H	W 85-69
2-26	Nebraska-Kearney	A	L 105-113
2-29	Wayne State	A	L 59-68

\$Mesa forfeit use of ineligible player

#-RMAC Prescason Tournament

%-Country Kitchen Classic

@-Angelo State Classic

*-WIBW/Washburn Tournament

1990-91 FHSU Basketball Results(18-12)

Date	Opponent	Site	Result
11-7	+Lithuanian National Team	H	L 98-99
11-18	Fort Sill	H	W 95-67
11-20	Kansas Wesleyan	H	W 100-64
11-23	#Abilene Christian	H	W 95-78
11-24	#Mississippi College	H	W 94-79
12-3	Washburn University	H	W 104-86
12-7	!Abilene Christian	A	W 94-71
12-8	!Angelo State	N	L 79-88
12-14	+Spirit Express	H	L 91-96
12-27	&Stonehill	A	W 93-90
12-28	&Washburn University	A	L 65-81
12-29	&Cal Poly San Luis Obispo	N	W 83-79OT
1-3	Mesa State	A	L 97-110
1-4	Western State	A	L 82-87
1-5	Colorado Mines	A	W 89-64
1-11	Adams State College	H	L 89-98OT
1-12	Fort Lewis College	H	W 112-75
1-14	Emporia State	A	L 75-76
1-18	Wayne State College	A	W 82-75
1-19	Chadron State	A	W 116-101
1-25	Adams State College	A	L 68-78
1-26	Fort Lewis College	A	L 81-101
2-1	Western State College	H	W 94-75
2-2	Mesa State College	H	L 85-88
2-3	Colorado School Of Mines	H	W 100-75
2-8	Wayne State College	H	W 73-58
2-9	Chadron State College	H	W 110-76
2-12	Emporia State	H	L 78-79
2-16	Kearney State College	A	L 90-102
2-24	Kearney State College	H	W 99-71
2-27	%McPherson College	H	W 87-66
3-2	%Midamerica Nazarene	H	W 109-97
3-5	%Emporia State	A	L 89-109

Country Kitchen Classic

& WIBW Tournament

!! Anglo State Classic

% District 10 Championship

+ Exhibition Contest (does not count on record)

1989-90 FHSU Basketball Results(18-12)

Date	Opponent	Site	Result
11-8	+Lithuanian National Team	H	L 65-81
11-17	*Colorado School Of Mines	H	W 77-59
11-18	*Cameron University	H	W 76-74
11-24	#Angelo State	H	W 70-65
11-25	#Northeast Missouri State	H	W 66-63
12-1	&New Mexico Highlands	N	L 71-87
12-2	&Colorado College	N	W 95-84
12-4	Adams State	A	W 80-71
12-6	Oral Roberts University	H	L 83-95
12-8	!Abilene Christian	N	W 89-78
12-9	!Angelo State	A	W 71-68
12-15	Washburn University	A	L 71-79
12-16	Drury College	H	L 63-74
1-2	Abilene Christian	H	W 89-77
1-5	@Kearney State	A	W 83-74
1-6	@Wi-Stevens Point	N	L 67-78
1-13	Drury College	A	L 54-93
1-16	Kansas Wesleyan	H	W 74-68
1-20	Oral Roberts	A	L 80-96
1-22	Adams State	H	W 72-58
1-26	Wayne State	H	W 82-61
1-29	Kearney State	H	W 101-85
2-3	Emporia State	H	L 67-85
2-7	Kearney State	A	L 77-93
2-10	Wayne State	A	W 84-69
2-12	Washburn University	H	L 72-74
2-16	Wayne State	H	W 105-76
2-17	Kearney State	H	W 85-83
2-24	Emporia State	A	L 56-57
2-28	%Tabor College	H	W 94-79
3-3	%Washburn University	A	L 56-70

+ Exhibition Contest (does not count on record)

*- Pepsi Tip-Off Classic

#- Amoco Thanksgiving Classic

&- Al Kaly Shrine Tournament

!- Angelo State Classic

@- Ramada Inn/Loper Classic

%- District 10 playoffs

1988-89 FHSU Basketball Results(21-9)

Date	Opponent	Site	Result
11-12	+Turkish National Team	H	W 72-62
11-19	Northwestern Oklahoma	H	W 72-60
11-27	Rockhurst College	H	W 85-70
12-2	Mid America Nazarene	A	W 85-75
12-3	Benedictine College	A	W 80-65
12-6	Kearney State	A	L 85-100
12-9	Panhandle State	H	W 97-75
12-16	Marymount College	A	W 83-82OT
12-17	Drury College	H	W 71-65
1-7	Drury College	A	L 64-80
1-11	Panhandle State	A	L 67-84
1-16	Kearney State	H	W 98-94
1-20	Missouri Southern	H	W 84-66
1-21	Pittsburg State	H	W 78-73
1-24	Baker University	H	W 87-75
1-27	Missouri Western	A	L 63-76
1-28	Wayne State	A	W 86-74
1-30	Marymount College	H	W 81-74
2-3	Emporia State	H	L 80-85
2-4	Washburn University	H	W 87-76
2-7	Northwest Oklahoma	A	W 90-80
2-10	Wayne State	H	W 82-67
2-11	Missouri Western	H	W 72-71
2-17	Pittsburg State	A	L 76-87
2-18	Missouri Southern	A	W 84-70

Past Years 1956-Present

2-21	Benedictine College	H	W	105-89
2-24	Washburn University	A	L	76-88
2-25	Emporia State	A	W	74-71
2-28	Rockhurst College	A	L	76-81
3-2	%Friends University	H	W	85-48
3-4	%Emporia State	A	L	62-64

%- District 10 Championship

+ Exhibition Contest (does not count on record)

2-7	Pittsburg State	H	W	102-74
2-9	Southern Nazarene	H	W	89-73
2-13	Washburn University	A	L	85-89
2-14	Emporia State	A	L	81-87
2-17	Kearney State	H	W	115-106
2-20	Wayne State	H	W	90-58
2-21	Missouri Western	H	W	86-54
2-23	Kansas Newman	H	W	83-80OT
2-28	%Friends University	H	W	75-40
3-2	%Emporia State	H	W	84-71
3-4	%Washburn University	A	L	61-63

1987-88 FHSU Basketball Results(28-5)

Date	Opponent	Site	Result
11-20	*Concordia Luthern	H	W 121-68
11-21	*Southwestern College	H	W 80-65
11-23	Kearney State	H	W 108-83
12-2	Phillips University	H	W 94-77
12-7	Drury College	H	W 80-74
12-10	Kearney State	A	W 94-76
12-19	Drury College	A	W 70-67
1-9	Tabor College	H	W 86-73
1-12	Southern Nazarene	H	W 74-68
1-15	Wayne State	A	W 86-68
1-16	Missouri Western	A	W 99-91
1-19	Northwestern Oklahoma	H	W 82-76
1-22	Washburn University	H	L 77-82
1-23	Emporia State	H	L 70-77
1-26	Panhandle State	A	L 77-78
1-29	Pittsburg State	H	W 100-55
1-30	Missouri Southern	H	W 82-56
2-1	Spring Arbor	H	W 98-56
2-5	Emporia State	A	W 97-91OT
2-6	Washburn University	A	L 69-72
2-9	Rockhurst College	A	W 78-73
2-12	Missouri Western	H	W 97-75
2-13	Wayne State	H	W 67-50
2-16	Marymount College	H	W 105-67
2-19	Missouri Southern	A	W 93-49
2-20	Pittsburg State	A	W 72-65
2-23	Panhandle State	A	W 100-83
2-27	Marymount College	A	W 100-82
3-2	%Friends University	H	W 68-59
3-4	%Emporia State	H	W 105-89
3-8	%Washburn University	A	W 89-86
3-16	SBelmont Abbey	N	W 95-63
3-18	SGrand Canyon	N	L 95-101

*-FHSU Pepsi Invitational

%-District 10 Championship

S-NAIA National Championship

1986-87 FHSU Basketball Results(23-9)

Date	Opponent	Site	Result
11-12	Arkansas Baptist	H	W 108-66
11-15	Panhandle State	H	W 89-78
11-20	Marymount College	H	W 97-69
11-22	Drury College	H	W 78-70
11-25	Kansas Newman	A	W 95-64
11-29	Grand Canyon	H	W 90-67
12-9	Kearney State	A	L 86-88OT
12-12	*Southwestern Oklahoma	N	L 75-90
12-13	*Southern Nazarene	A	L 77-79
12-19	#Baptist Christian	H	W 119-75
12-20	#Drury College	A	L 64-73
1-16	Emporia State	H	W 84-66
1-17	Washburn University	H	L 84-94OT
1-19	Marymount College	A	W 89-61
1-23	Pittsburg State	A	W 81-74
1-24	Missouri Southern	A	L 74-77
1-27	Panhandle State	A	W 90-86
1-30	Missouri Western	A	W 90-70
1-31	Wayne State	A	W 70-64
2-2	Benedictine College	H	W 81-72
2-6	Missouri Southern	H	W 96-86

*-Southern Nazarene Classic

#-FHSU Pepsi Classic Invitational

%-District 10 Championship

1985-86 FHSU Basketball Results(25-9)

Date	Opponent	Site	Result
11-11	+Bratislava-Czechoslovakia	H	W 76-75
11-13	Doane College	H	W 102-72
11-19	UMKC - Kansas City	H	W 82-72
11-22	#Lincoln	H	W 105-57
11-23	#Central State	H	W 79-48
11-26	Drury College	A	L 61-58
11-30	Briar Cliff College	H	L 75-73
12-2	Marymount College	A	W 97-66
12-4	Concordia College	H	W 89-58
12-7	Kearney State	H	W 92-66
12-14	Drury College	H	W 74-72
12-21	Carson Newman College	H	W 85-75
1-8	Briar Cliff	A	L 78-73
1-10	*Missouri Valley College	H	W 102-48
1-11	*West Virginia Tech	H	W 92-69
1-14	Kansas Newman	A	W 71-67
1-17	Missouri Western	H	W 86-78
1-18	Wayne State	H	W 77-44
1-24	Emporia State	A	L 88-81
1-25	Washburn University	A	L 66-61
1-31	Missouri Southern	A	L 78-72
2-1	Pittsburg State	A	W 78-73
2-4	Kansas Newman	H	W 68-63
2-7	Washburn University	H	W 79-67
2-8	Emporia State	H	W 104-70
2-11	Marymount College	H	W 85-70
2-14	Wayne State	A	W 72-37
2-15	Missouri Western	A	L 78-76
2-18	Kearney State	A	W 73-62
2-21	Pittsburg State	H	W 94-68
2-22	Missouri Southern	H	W 56-54
2-24	UMKC - Kansas City	A	L 83-73OT
3-1	%Friends University	H	W 97-69
3-3	%Washburn University	H	W 79-67
3-5	%Emporia State	A	L 92-84

% District 10 Playoffs

+ Exhibition Contest (does not count on record)

* Pepsi/Augustino's Classic at Hays, KS

#Augustino's/Pepsi Invitational at Hays, KS

1984-85 FHSU Basketball Results(35-3)

Date	Opponent	Site	Result
11-20	Bethany College	A	W 113-70
11-26	Doane College	A	W 68-64
11-28	Panhandle State	H	W 110-80
11-30	#Langston University	H	W 98-82
12-1	#Doane College	H	W 104-77
12-3	Marymount College	H	L 67-66
12-10	Kearney State	A	W 71-70
12-12	+Spirit Express	H	W 87-68
12-15	*Drury College	A	W 70-64
1-5	#Alaska-Anchorage	N	W 84-67
1-6	##Chaminade	N	W 82-77
1-11	**Jarvis Christian	H	W 115-73
1-12	**Benedictine	H	W 68-53

Past Years 1956-Present

1-14	College of Santa Fe	A	L	66-63
1-15	Panhandle State	A	W	105-67
1-18	Missouri Southern	H	W	72-58
1-19	Pittsburg State	H	W	59-44
1-22	Kansas Newman	A	W	67-56
1-25	Missouri Western	A	W	72-70
1-26	Wayne State	A	W	64-50
1-29	Kansas Newman	H	W	86-70
2-1	Emporia State	H	W	109-85
2-2	Washburn University	H	L	63-78
2-5	Kearney State	H	W	89-71
2-8	Wayne State	H	W	97-78
2-9	Missouri Western	H	W	82-65
2-15	Pittsburg State	A	W	57-56
2-16	Missouri Southern	A	W	71-64
2-19	Marymount College	A	W	74-73
2-22	Washburn University	A	W	84-80OT
2-23	Emporia State	A	W	91-70
3-2	%Kansas Wesleyan	H	W	85-63
3-4	%Marymount College	H	W	84-64
3-6	%Washburn University	H	W	73-54
3-14	\$\$Rocky Mountain	N	W	80-67
3-15	\$\$David Lipscomb	N	W	55-48
3-16	\$\$Athens State	N	W	67-63
3-18	\$\$Central Washington	N	W	65-64
3-19	\$\$Wayland Baptist	N	W	82-80OT

*Pepsi Classic at Hays, Ks.

At Kemper Arena

##Brother AIU Classic-Chamindade at Honolulu, HI

**Augustino's Invitational at Hays, Ks

% District 10 Playoffs

\$\$ NAIA National Championships

1983-84 FHSU Basketball Results(35-2)

Date	Opponent	Site	Result
11-16	Benedictine College	H	W 93-54
11-22	Bethel College	H	W 109-54
11-23	Doane College	H	W 89-65
12-1	Marymount College	A	W 96-61
12-6	Doane College	A	W 79-67
12-8	Kearney State	H	W 82-78
12-10	Bethany College	H	W 104-64
12-16	Tabor College	H	W 93-67
12-30	University of Arizona	A	L 81-64
1-7	Kansas Newman	A	W 81-61
1-13	Emporia State	A	W 71-58
1-14	Washburn University	A	W 86-79
1-16	Panhandle State	H	W 105-88
1-20	Pittsburg State	H	W 97-64
1-21	Missouri Southern	H	W 61-52
1-24	Panhandle State	A	W 96-90
1-27	Wayne State	H	W 86-69
1-28	Missouri Western	H	W 67-61
1-30	Kansas Newman	H	W 73-48
2-3	Missouri Southern	A	W 57-55
2-4	Pittsburg State	A	W 86-61
2-7	Benedictine College	A	W 74-56
2-10	Washburn University	H	W 75-60
2-11	Emporia State	H	L 61-62
2-17	Wayne State	A	W 64-56
2-18	Missouri Western	A	W 67-65
2-21	Kearney State	A	W 89-66
2-23	Marymount College	H	W 73-63
2-27	St. Mary of the Plains	H	W 83-44
3-3	@Friends University	H	W 79-63
3-5	@Emporia State	H	W 74-67
3-7	@Washburn University	H	W 71-60
3-14	#Taylor College	N	W 70-47
3-16	#Central Wesleyan	N	W 76-68
3-17	#Waynesburg	N	W 87-55
3-19	#Chicago State	N	W 86-84OT
3-20	#Wisc Stevens Point	N	W 48-46OT

@NAIA District 10 Games

#NAIA National Championships

1982-83 FHSU Basketball Results(32-4)

Date	Opponent	Site	Result
11-19	+McPherson College	H	W 88-53
11-20	+Santa Fe	H	W 78-77
11-23	Sterling College	A	W 85-62
11-27	St. Mary of the Plains	A	W 77-63
11-30	Kearney State	A	W 79-74
12-3	Kansas Newman	H	W 88-74
12-6	Hastings College	A	L 82-75
12-8	Marymount College	H	W 98-89
12-17	Panhandle State	H	L 103-92
12-18	Hastings College	H	W 94-83
1-3	@Northeastern Oklahoma	N	W 53-45
1-4	@Kansas Newman	A	W 63-53
1-6	@Friends University	N	W 64-61
1-14	Missouri Western	A	W 68-66
1-15	Wayne State	A	W 72-64
1-21	Emporia State	H	W 72-59
1-22	Washburn University	H	W 70-67
1-28	Missouri Southern	H	W 82-79
1-29	Pittsburg State	H	W 83-67
2-4	Washburn University	A	W 70-62
2-5	Emporia State	A	W 84-72
2-11	Wayne State	H	W 77-70
2-12	Missouri Western	H	W 77-62
2-15	Panhandle State	A	L 91-83
2-18	Pittsburg State	A	W 56-51
2-19	Missouri Southern	A	W 81-76
2-22	Kearney State	H	W 80-72
2-24	Marymount	A	W 82-76
3-5	#Friends University	H	W 74-63
3-7	#Emporia State	H	W 72-65
3-9	#Marymount College	H	W 76-73
3-15	%Southern Arkansas	N	W 71-65
3-16	%St. Thomas Aquinas	N	W 72-67
3-17	%Loras College	N	W 74-71
3-18	%West Virginia Wesleyan	N	L 71-56
3-19	%Chaminade	N	W 85-76

+Big Cheese Classic

@-Kansas Newman Classic

#-District 10 Playoffs

%-NAIA National Championships

1981-82 FHSU Basketball Results(9-21)

Date	Opponent	Site	Result
11-31	#Rockmount College	H	W 105-41
11-14	#Northeast Oklahoma	H	L 67-51
11-17	Marymount College	H	L 102-81
11-24	Sterling College	H	L 86-81
11-28	St. Mary of the Plains	H	L 78-67
12-1	*Kearney State	H	L 69-61
12-5	Marymount College	A	L 95-53
12-7	Kansas Newman	H	L 75-69
12-9	McPherson College	H	W 84-75
12-27	&Auburn Montgomery	N	L 36-35
12-28	&Winthrop College	N	L 54-45
12-29	&Chicago State	N	L 96-55
1-7	Univ. of Texas-El Paso	A	L 88-47
1-12	Oklahoma Christian	H	L 83-65
1-15	*Washburn University	H	L 63-51
1-16	*Emporia State	H	L 81-68
1-20	Kansas Newman	A	W 61-58
1-22	*Missouri Southern	A	L 71-62
1-23	*Pittsburg State	A	W 50-48
1-25	Bethany College	A	L 58-57
1-29	*Missouri Western	H	L 79-67
1-30	*Wayne State	H	W 77-71
2-5	*Emporia State	A	W 54-52
2-6	*Washburn University	A	L 61-50
2-12	*Wayne State	A	W 72-63

Past Years 1956-Present

2-13	*Missouri Western	A	L	97-69
2-19	*Pittsburg State	H	W	66-64
2-20	*Missouri Southern	H	W	71-61
2-23	*Kearney State	A	L	89-74
2-27	+Emporia State	A	L	70-60

Big Cheese Classic Games
 & Quincy Tournament Games
 * CSIC Games
 + District 10 Play-Off Games

1980-81 FHSU Basketball Results(30-4)

Date	Opponent	Site	Result
11-13	@Wayland Baptist	H	W 85-67
11-14	@Rockmont College	H	W 109-67
11-15	@Columbia College	H	W 73-52
11-19	Marymount College	A	W 92-80
11-24	Kansas Wesleyan	H	W 99-63
11-25	Sterling College	H	W 65-55
12-3	Kearney State	A	W 77-76
12-6	Marymount College	H	W 90-78
12-9	Kansas Newman	H	W 116-85
12-11	McPherson College	H	W 89-55
12-12	Harris-Stowe	H	W 100-65
1-1	#Baptist Bible	A	W 91-87
1-2	#Tabor College	A	W 121-81
1-3	#Ottawa College	A	W 78-68
1-9	Kansas Newman	A	W 63-62
1-16	Missouri Western	A	W 76-65
1-17	Wayne State	A	W 91-85
1-20	Denver University	H	W 72-62
1-23	Washburn University	H	W 70-63
1-24	Emporia College	H	W 86-63
1-26	Bethany College	H	W 80-72
1-30	Pittsburg State	A	W 71-61
1-31	Missouri Western	A	L 91-73
2-6	Washburn University	A	L 75-61
2-7	Emporia State	A	W 64-61
2-13	Missouri Western	H	W 90-79
2-14	Wayne State	H	W 88-66
2-20	Pittsburg State	H	W 95-81
2-21	Missouri Southern	H	L 84-77
2-24	Kearney State	H	W 85-83
2-27	&Emporia State	H	W 91-67
3-2	&Benedictine College	H	W 74-68
3-4	&Washburn University	H	W 66-62
3-9	*Hanover College	A	L 66-64

@Big Cheese Classic
 #Friends Invitational
 &District 10 Play-Offs
 *NAIA National Championships

1979-80 FHSU Basketball Results(17-16)

Date	Opponent	Site	Result
11-16	+Doane College	H	W 80-68
11-17	+Chadron State	H	L 64-78
11-18	+Southwestern Oklahoma	H	L 79-86
11-20	Marymount College	A	L 68-76
11-26	Marymount College	H	W 86-78
12-1	San Diego State	A	L 77-101
12-4	Kansas Newman	A	L 67-80
12-7	Tulane University	A	L 80-94
12-12	McPherson College	A	W 103-60
12-14	#Langston University	H	W 106-90
12-15	#Langston University	H	W 85-67
12-16	#Ottawa University	H	W 74-64
1-9	Denver University	A	W 88-86
1-12	Bethany College	A	L 71-79
1-18	Missouri Southern	A	L 69-73
1-19	Pittsburg State	A	L 63-65
1-22	Kearney State	H	L 82-84
1-25	Wayne State	H	W 69-56
1-26	Missouri Western	H	W 110-81

1-28	Mid-American Nazarene	H	W 87-68
1-30	Kansas Newman	H	W 86-78
2-1	Emporia State	A	L 66-69
2-2	Washburn University	A	L 69-85
2-8	Pittsburg State	H	W 79-75
2-9	Missouri Southern	H	W 90-77
2-11	Kansas Wesleyan	H	W 94-79
2-15	Emporia State	H	W 90-66
2-16	Washburn University	H	W 92-72
2-22	Wayne State	A	L 82-91
2-23	Missouri Western	A	W 68-65
2-26	Kearney State	A	L 87-93
3-1	*Tabor College	H	W 100-86
3-2	*Washburn University	A	L 62-74

*District 10 Playoffs
 +Big Cheese Classic Games
 #Western Kansas Classic Game

1978-79 FHSU Basketball Results(16-17)

Date	Opponent	Site	Result
11-18	Benedictine College	H	W 79-77
11-25	@Chaminade	N	L 92-89
11-27	@BYU-Hawaii	N	W 97-87
12-3	@Chaminade	N	L 88-78
12-5	Hastings College	A	L 95-90
12-9	Benedictine College	A	L 67-65
12-15	#Central Missouri	H	L 80-74
12-16	#Panhandle State	H	W 88-69
12-17	#Wayland Baptist	H	W 98-82
12-29	%Augustana	N	L 75-65
12-30	%Westminster	N	W 104-92
1-3	U. of Science & Arts of OK	H	W 66-62
1-4	U. of Science & Arts of OK	H	L 75-67
1-6	Drake University	A	L 99-66
1-16	Kearney State	A	L 98-92
1-19	Missouri Western	H	L 79-78OT
1-20	Wayne State	H	W 64-61OT
1-23	Hastings College	H	W 113-82
1-26	Pittsburg State	H	W 102-70
1-27	Missouri Southern	H	W 94-78
1-30	KansasNewman	H	W 72-67
2-2	Missouri Western	A	L 74-72
2-3	Wayne State	A	L 100-77
2-9	Washburn University	H	L 79-71
2-10	Emporia State	H	W 86-83OT
2-13	Bethany College	H	W 89-84
2-16	Pittsburg State	A	L 97-79
2-17	Missouri Southern	A	L 68-66
2-20	Kansas Newman	A	W 87-84
2-23	Washburn University	A	L 94-73
2-24	Emporia State	A	W 81-76
2-27	Kearney State	H	W 102-100OT
3-3	\$Pittsburg State	H	L 66-65

%Grand Canyon Classic-Phoenix, AZ
 @Hawaiian Tour
 #Western Kansas Classic - Hays
 \$District 10 Playoffs

1977-78 FHSU Basketball Results(11-18)

Opponent	Site	Result
Culver Stockton	A	W 82-72
Southwestern Oklahoma	A	W 88-74
U. of Science & Arts of OK	A	L 85-80
Marymount College	A	L 114-81
Benedictine College	H	W 71-53
Hastings College	H	L 107-104
Marymount College	H	L 95-89
Benedictine College	A	L 86-63
Kansas Newman	A	L 86-77
Baker University	A	W 98-97
Friends University	A	L 87-82
Panhandle State	A	W 96-76

Past Years 1956-Present

Ottawa University	A	W	87-71
Kansas Newman	H	L	82-80
Kearney State	H	W	98-82
Emporia State	H	W	85-77
Washburn University	H	L	71-69
Hastings College	A	L	91-74
Wayne State	A	L	112-92
Missouri Western	A	W	51-50
Missouri Southern	A	L	87-68
Pittsburg State	A	L	86-83
Wayne State	H	L	109-104
Missouri Western	H	W	79-76
Emporia State	A	L	95-78
Washburn University	A	L	86-63
Missouri Southern	H	L	88-87
Pittsburg State	H	W	108-93
Kearney State	A	L	99-82

1976-77 FHSU Basketball Results(10-17)

Date	Opponent	Site	Result
11-18	@Langston College	N	L 77-71
11-19	@U of Science & Arts of OK	N	W 76-72
11-20	@Tabor College	N	W 84-80
11-27	Marymount College	A	L 94-82
12-4	Kansas Newman	H	W 68-57
12-6	Benedictine College	A	W 58-57
12-8	Marymount College	H	L 78-69
12-11	Benedictine College	H	W 82-69
12-17	#Grand Canyon College	A	L 85-72
12-18	#Occidental College	N	L 88-80
1-5	Kansas Newman	A	L 74-65
1-8	Hastings College	H	L 84-81
1-14	Emporia State	A	L 77-60
1-15	Washburn University	A	L 64-59
1-18	Hastings College	A	L 74-69
1-21	Wayne State	H	L 93-88
1-22	Missouri Western	H	L 78-68
1-25	Kearney State	A	L 88-86
1-28	Missouri Southern	H	W 69-62
1-29	Pittsburg State	H	W 51-50
2-4	Wayne State	A	L 98-82
2-5	Missouri Western	A	L 67-58
2-11	Emporia State	H	L 79-78OT
2-12	Washburn University	H	W 88-71
2-18	Missouri Southern	A	L 79-64
2-19	Pittsburg State	A	L 67-55
2-22	Kearney State	H	W 87-85

@ Emporia Tournament Emporia, KS
Grand Canyon Classic Phoenix, AZ

1975-76 FHSU Basketball Results(19-9)

Date	Opponent	Site	Result
11-20	@Tabor College	N	W 81-57
11-21	@Kansas Newman	N	W 89-77
11-22	@Emporia State	N	W 76-73
11-29	Panhandle State	H	W 94-62
12-1	Drake University	A	L 102-92
12-5	Marymount College	A	L 78-58
12-6	Marymount College	H	W 66-62
12-9	Benedictine College	A	L 67-58
12-13	Hastings College	H	W 83-82
12-19	Kansas Newman	A	L 109-82
1-9	Southern Colorado	A	W 80-60
1-10	Northern Colorado	A	W 71-70
1-14	Kearney State	A	L 102-94
1-17	Emporia State	H	W 86-74
1-20	Hastings College	A	W 68-66
1-24	Washburn University	H	W 61-52
1-27	Panhandle State	A	W 85-76
1-31	KSC Pittsburg	A	L 81-76
2-6	Southern Colorado	H	W 76-64
2-7	Northern Colorado	H	W 60-58
2-11	Kansas Newman	H	W 91-79

2-14	Emporia State	A	L 75-71
2-18	Benedictine College	H	W 68-60
2-23	Kearney State	H	W 100-87
2-25	Washburn University	A	W 62-58
2-26	KSC Pittsburg	H	L 67-56
3-1	#Kansas Wesleyan	N	W 97-85OT
3-3	#Marymount College	N	L 83-73

@ Emporia Tournament- Emporia, KS
District 10 Playoffs

1974-75 FHSU Basketball Results(12-13)

Date	Opponent	Site	Result
11-30	Sterling College	H	L 93-65
12-2	Kearney State	H	L 98-93
12-6	Central Oklahoma	H	W 60-49
12-7	Oklahoma Baptist	H	W 76-58
12-10	Benedictine College	A	L 81-76OT
12-13	Kansas Newman	A	L 73-70
12-21	Southwestern College	H	L 72-74
1-3	@Oklahoma Baptist	N	L 56-49
1-4	@American Christian	N	L 82-81
1-10	Northern Colorado	H	W 80-62
1-11	Southern Colorado	H	W 78-56
1-14	Kearney State	A	L 111-94
1-18	Emporia State	A	L 84-76
1-22	Panhandle State	H	W 89-73
1-25	Washburn University	H	W 68-60
2-1	KSC Pittsburg	H	L 82-80
2-7	Northern Colorado	A	L 75-73
2-8	Southern Colorado	A	L 82-77OT
2-12	Benedictine College	H	W 92-63
2-15	Emporia State	H	W 105-83
2-19	Kansas Newman	H	W 90-87
1-22	Panhandle State	H	W 89-73
2-25	Washburn University	A	W 76-74
2-27	KSC Pittsburg	A	L 83-74
3-3	#KSC Pittsburg	N	W 93-87
3-5	#Marymount College	N	L 91-67

@Southwestern Oklahoma Tournament
Weatherford, OK
#District 10 Playoffs

1973-74 FHSU Basketball Results(14-9)

Date	Opponent	Site	Result
11-30	East Central Oklahoma	H	W 74-68
12-1	Gardner-Webb, N.C.	H	L 95-70
12-4	Kansas Newman	A	L 65-58
12-8	Washburn University	H	W 81-78
12-10	Kearney State	A	L 83-75
12-15	Benedictine College	H	W 60-59
12-28	Central Missouri	H	W 85-82
12-29	Adams State	H	W 87-74
1-4	Northern Colorado	A	W 75-71
1-5	Southern Colorado	A	L 75-69
1-12	Emporia State	H	W 75-72
1-14	Kearney State	H	W 113-108
1-19	Kansas Newman	H	W 96-73
1-26	KSC-Pittsburg	A	L 108-70
1-28	Eastern New Mexico	H	W 64-61
2-1	Northern Colorado	H	L 74-64
2-2	Southern Colorado	H	L 71-65
2-5	Northwestern Oklahoma	A	W 73-71
2-9	Emporia State	A	L 84-71
2-16	Washburn University	A	L 81-57
2-18	Northwestern Oklahoma	H	W 98-90
2-20	Benedictine College	A	W 74-72
2-23	KSC-Pittsburg	H	W 89-73

1972-73 FHSU Basketball Results(9-15)

Date	Opponent	Site	Result
11-27	Fort Lewis College	H	W 91-68
12-1	Kearney State	A	W 98-91

Past Years 1956-Present

12-2	Sacred Heart College	H	W	83-82
12-9	Washburn University	A	W	63-59
12-12	Kearney State	H	W	96-93
12-29	@Western Carolina	N	L	89-57
12-30	@Carson-Newman	N	W	84-83
1-5	Northern Colorado	H	W	78-75
1-6	Southern Colorado	H	L	62-60
1-9	Sacred Heart College	A	L	87-73
1-13	Kansas State Teachers	A	L	62-57
1-19	University of Nebraska	A	L	69-60
1-20	Benedictine College	H	W	50-48
1-23	Northwestern Oklahoma	A	L	69-60
1-27	Kansas State College	H	W	79-72
1-29	Eastern New Mexico	A	L	87-65
2-2	Northern Colorado	A	L	77-70
2-3	Southern Colorado	A	L	86-56
2-6	Northwestern Oklahoma	H	L	75-64
2-10	Kansas State Teachers	H	L	80-78
2-12	Benedictine College	A	L	73-60
2-16	Univ. Of Nebraska	H	L	89-83
2-17	Washburn University	H	L	70-66
2-22	Kansas State College	A	L	78-57

@Gardner-Webb Tournament-Boiling, NC

1971-72 FHSU Basketball Results(13-11)

Date	Opponent	Site	Result
12-1	Benedictine College	H	L 81-76
12-4	Kearney State	H	W 84-83
12-7	Northwestern Oklahoma	H	W 83-81
12-9	Regis College	H	W 78-72
12-11	Hastings College	A	L 92-80
12-18	Emporia State	A	L 63-59
12-20	@Eastern New Mexico	N	W 90-74
12-21	@Grand Canyon College	A	L 75-64
1-4	Hastings College	H	W 87-80
1-8	Omaha University	H	W 94-86
1-11	Washburn University	A	L 74-63
1-15	Kansas State College	A	L 71-56
1-18	Kearney State College	A	L 84-72
1-22	Northern Colorado	H	W 68-59
1-24	Southern Colorado	H	L 77-75
1-29	Kansas State College	H	W 78-62
2-1	Washburn University	H	W 63-57
2-5	Omaha University	A	W 62-61
2-8	Sacred Heart College	H	W 93-59
2-11	Southern Colorado	A	L 76-57
2-12	Northern Colorado	A	W 75-54
2-15	Sacred Heart College	A	W 66-65
2-19	Emporia State	H	L 76-75
2-22	Benedictine College	A	L 74-57

@Grand Canyon Tournament-Phoenix, AZ

1970-71 FHSU Basketball Results(15-11)

Date	Opponent	Site	Result
12-1	Kearney State	H	W 101-72
12-3	Regis College	A	L 83-67
12-5	St. Benedict's College	A	L 83-50
12-8	Kearney State	A	L 102-71
12-10	Hastings College	H	W 84-79
12-12	St. Benedict's College	H	W 75-64
12-19	Kansas State Teachers	H	W 74-73
12-28	@Carroll College	N	W 86-71
12-29	@Western Montana State	N	W 80-79
12-30	Western Montana State	A	L 72-62
1-6	Northwest Oklahoma	A	L 92-69
1-9	University of Nebraska	A	L 86-81
1-12	Washburn University	H	W 74-60
1-16	Pittsburg State	H	W 84-67
1-18	Regis College	H	W 76-69
1-22	Southern Colorado	A	W 64-62
1-23	Northern Colorado	A	L 83-62
1-30	Pittsburg State	A	W 73-72

2-3	Washburn University	A	W 83-70
2-6	University of Nebraska	H	W 99-74
2-9	Hastings College	A	L 103-95
2-13	Northern Colorado	H	W 97-73
2-15	Southern Colorado	H	L 76-79
2-20	Kansas State Teachers	A	L 77-75
2-27	Western New Mexico	A	W 101-99
3-2	#Friends University	N	L 92-85

@Holiday Tournament-Anaconda, MT #District 10 Playoffs

1969-70 FHSU Basketball Results(14-9)

Date	Opponent	Site	Result
12-1	Kearney State	A	L 116-90
12-2	Northwestern Oklahoma	H	W 101-88
12-6	St. Benedict's College	H	W 65-62
12-8	Washburn University	A	L 75-67
12-13	Kansas State College	A	W 89-80
12-16	Washburn University	H	W 82-53
12-20	St. Benedict's College	A	W 68-66
12-29	@Southern Utah	N	*L 90-85
12-30	@Colorado Mines	N	W 100-79
1-5	Kansas State Teachers	A	W 73-63
1-10	Southern Colorado	H	W 71-67
1-17	Hastings College	H	W 98-75
1-24	Kansas State College	H	L 102-86
1-31	Omaha University	H	W 93-86
2-2	Kearney State	H	W 100-93
2-6	Colorado State at Greeley	A	L 97-92
2-7	Southern Colorado	A	L 86-69
2-10	Hastings College	A	L 92-75
2-14	Colorado State at Greeley	H	W 92-73
2-17	Northwestern Oklahoma	A	L 89-72
2-21	Kansas State Teachers	H	W 93-82
2-23	Omaha University	A	L 84-80
2-27	#St. Mary Of The Plains	N	L 67-65

*Southern Utah Forfited Game

@Southern Utah Tournament-Cedar City, UT #District 10 Playoffs

1968-69 FHSU Basketball Results(9-13)

Date	Opponent	Site	Result
11-30	Kearney State	H	W 90-85
12-3	Northwestern Oklahoma	H	W 78-57
12-7	St. Benedict's College	H	W 66-64
12-9	Lincoln University	H	L 85-77
12-14	Pittsburg State College	A	L 101-76
12-16	Southwestern Oklahoma	A	L 85-63
12-20	Lincoln University	A	L 94-79
12-21	St. Benedict's College	A	L 73-68
12-27	@Northwest Missouri	N	W 75-70
12-28	@Midland College	N	W 72-53
1-3	Colorado State at Greeley	A	L 88-84
1-4	Southern Colorado	A	L 77-76
1-11	Emporia State College	H	W 85-78
1-25	Colorado State at Greeley	H	W 95-79
2-1	University of Nebraska	A	L 79-68
2-3	Washburn University	A	L 83-73
2-8	Southern Colorado State	H	L 85-80
2-15	Pittsburg State College	H	W 74-72
2-18	Northwestern Oklahoma	A	L 103-85
2-22	Washburn University	H	L 74-60
2-24	Emporia State	A	L 73-62
3-1	University of Nebraska	H	W 102-86

@Hastings Tournament - Hastings NE.

1967-68 FHSU Basketball Results(10-11)

Date	Opponent	Site	Result
------	----------	------	--------

Past Years 1956-Present

12-2	Southern Colorado	H	W	76-68
12-5	Northwestern Oklahoma	A	W	75-74
12-9	Southern Colorado	A	L	102-79
12-16	Omaha University	H	W	102-80
12-18	Southwestern Oklahoma	H	W	90-80
12-20	St. Benedict's College	A	W	75-70
12-29	@Abilene Christian College	N	L	95-65
12-30	@Rocky Mountain College	N	W	108-88
1-4	Hastings College	H	W	62-55
1-6	Emporia State College	H	L	85-81
1-8	Kearney State	A	L	84-78
1-13	Pittsburg State	A	L	67-62
1-25	Hastings College	A	L	99-80
1-27	Washburn University	A	L	79-61
1-30	Northwestern Oklahoma	H	W	88-82
2-3	Emporia State	A	L	85-62
2-6	St. Mary Of The Plains	H	L	84-73
2-10	Omaha University	A	W	80-67
2-17	Pittsburg State	H	W	93-63
2-20	St. Mary Of The Plains	A	L	82-74
2-24	Washburn University	H	L	76-72
2-26	St. Benedict's College	H	W	88-67

@Colorado College Tournament - Greeley CO

1966-67 Basketball Results(8-13)

Date	Opponent	Site	Result
11-29	Southwestern Oklahoma	A	L 107-92
12-2	Southwestern College	H	W 82-64
12-3	Southern Colorado	H	L 77-67
12-6	Kearney State	A	W 96-79
12-10	Southern Colorado	A	L 88-85
12-13	Chadron State	H	W 82-80
12-17	Omaha University	A	L 70-56
12-19	Southwestern Oklahoma	H	W 71-66
1-3	Lincoln University	H	L 100-85
1-7	Pittsburg State	H	W 68-66
1-10	St. Mary Of The Plains	H	L 83-82
1-21	St. Benedict's College	A	L 93-70
1-28	Washburn University	A	L 64-55
1-31	Kearney State	H	W 93-85
2-4	Emporia State	H	W 79-75
2-6	Lincoln University	A	L 102-79
2-11	Omaha University	H	W 57-55
2-16	Emporia State	A	L 87-72
2-18	Pittsburg State	A	L 76-68
2-25	Washburn University	H	L 75-61
2-27	St. Benedict's College	H	L 78-67

1965-66 FHSU Basketball Results(11-10)

Opponent	Site	Result
Southwestern College	A	W 91-73
Lincoln University	H	W 89-78
Southern Colorado	H	W 86-76
Kearney State	H	W 103-78
Southern Colorado	A	L 89-85
Colorado State-Greeley	H	W 84-82
Omaha University	N	W 78-62
Illinois State	N	L 84-82
Rockhurst	N	L 74-73
Pittsburg State	H	L 71-65
Omaha University	A	W 69-67
St. Benedict's	A	L 69-53
Bethany	H	W 69-68
Hastings	H	W 76-64
Emporia State	H	L 92-80
Washburn University	H	W 75-58
Emporia State	A	L 72-60
Pittsburg State	A	L 94-82
St. Benedict's	H	L 76-68
Omaha University	H	W 86-68
Washburn University	A	L 80-75

1964-65 FHSU Basketball Results(9-13)

Date	Opponent	Site	Result
12-1	Southwestern Oklahoma	H	W 82-72
12-3	Southwestern College	H	W 86-62
12-12	St. Benedict's	H	W 91-74
12-15	Hastings College	A	L 82-67
12-16	Kearney State	A	L 83-80
12-19	Northwestern Oklahoma	H	W 104-88
12-28	@Quincy College	A	L 110-80
12-29	@Oklahoma Baptist	N	L 67-65
12-30	@St. Cloud State	N	L 84-78
1-4	Pittsburg State	A	L 74-62
1-5	Lincoln University	A	L 86-77
1-9	Omaha University	H	W 92-63
1-11	Southern Colorado	A	L 88-75
1-23	Southern Colorado	H	L 88-83
1-25	Southern Colorado	N	W 79-71
1-30	Emporia State	A	W 74-60
2-1	Washburn University	A	L 95-75
2-8	Emporia State	H	W 103-72
2-13	Pittsburg State	H	L 83-79
2-20	Omaha University	A	L 58-57
2-22	St. Benedict's College	A	L 86-79
2-25	Washburn University	H	W 98-75

@ Quincy Tournament - Quincy, IL

1963-64 Basketball Results(10-9)

Date	Opponent	Site	Result
11-26	Southwestern Oklahoma	A	W 83-76
11-30	Southern Colorado	H	W 112-110
12-3	Kansas Wesleyan	H	W 49-36
12-7	Hastings College	H	W 95-72
12-10	Kearney State	H	W 106-73
12-14	Washburn University	A	L 93-89OT
12-20	Southern Colorado	A	L 99-96
12-21	Colorado State at Greeley	A	L 94-90
12-28	Central Oklahoma	A	W 86-84
1-4	Omaha University	H	L 85-82
1-11	Emporia University	H	W 79-67
1-25	Pittsburg State	H	W 108-93
2-1	St. Benedict's College	A	L 86-80
2-3	Omaha University	A	L 86-71
2-8	Washburn University	H	W 95-82
2-10	St. Michael's College	H	W 84-82
2-14	Emporia State	A	L 79-71
2-22	Pittsburg State	A	L 106-83
2-27	St. Benedict's College	H	L 106-98

1962-63 FHSU Basketball Results(21-7)

Date	Opponent	Site	Result
11-29	Southwestern Oklahoma	H	W 97-74
12-1	U. of New Mexico	A	L 66-55
12-4	Kearney State	A	W 122-88
12-13	Colorado State at Greeley	H	W 108-71
12-15	Washburn University	H	W 76-45
12-20	Arkansas A.M. & N.	H	W 86-66
12-28	Southwestern College	N	W 89-84
12-29	Pittsburg State	N	W 74-70
1-5	Washburn University	A	L 68-66
1-12	Emporia State	H	W 83-79
1-15	Kansas Wesleyan	A	W 75-54
1-26	Pittsburg State	A	L 96-83
1-28	Southwestern College	A	W 90-75
2-2	Pan American College	H	L 85-73
2-4	St. Benedict's College	A	L 72-68
2-9	Omaha University	A	W 101-76
2-12	Emporia State	A	W 78-67
2-16	St. Benedict's College	H	W 86-83
2-23	Omaha University	H	W 94-57
2-28	Pittsburg State	H	W 95-79
	@Emporia State	A	W 68-64
	@Southwestern College	H	W 105-91
	@Southwestern College	A	W 78-66

Past Years 1956-Present

#Eastern New Mexico	N	W	95-68
#Augsburg College	N	W	82-71
#Rockhurst College	N	W	96-76
#Western Carolina	N	L	100-84
#Grambling State	N	L	107-86

\$- Campus Christmas Classic- Wichita, KS

@- District 10 Playoffs

#- NAIA National Championship Tournament-
Kansas City, KS

1961-62 FHSU Basketball Results(19-4)

Date	Opponent	Site	Result
11-28	Southwestern College	H	W 96-71
12-4	Southwestern Oklahoma	H	W 100-60
12-8	Colorado College	A	W 85-74
12-9	Colorado State at Greeley	A	W 69-65
12-12	Kearney State	H	W 100-90
12-16	Omaha University	H	W 71-65
12-19	Adams State	H	W 105-81
12-28	@St. Michael's	A	L 87-83
12-29	@Panhandle A&M	A	W 66-63
12-30	Carthage College	A	W 79-56
1-6	St. Benedict's College	A	L 80-63
1-8	Emporia State	A	L 72-67
1-13	Pittsburg State	H	W 92-68
1-16	Kansas Wesleyan	H	W 90-77
1-27	Pittsburg State	A	W 81-71
2-3	Emporia State	H	W 89-74
2-9	Washburn University	A	W 62-54
2-10	Omaha University	A	W 94-85
2-17	St. Benedict's College	H	W 75-63
2-24	Washburn University	H	W 74-63
	#Ottawa University	A	W 76-52
	#Ottawa University	H	W 42-36
	SLewis & Clark	N	L 75-69

@-Top of the Nation Tournament - Alamosa, CO

#- NAIA District 10 Playoffs

\$- NAIA Championships - Kansas City, KS

1960-61 FHSU Basketball Results(11-8)

Date	Opponent	Site	Result
12-2	Southwestern Oklahoma	H	W 88-59
12-3	Hastings College	A	W 80-69
12-6	Colorado College	H	W 74-63
12-10	Omaha University	H	W 81-64
12-13	Nebraska State Teachers	A	L 95-78
12-15	New Mexico Highlands	H	W 73-67
12-17	Prairie View A & M	H	L 95-79
12-20	Bethany College	H	W 76-56
1-7	Pittsburg State	A	L 66-61
1-14	Emporia State	H	L 79-59
1-18	Kansas Wesleyan	A	W 71-62
1-21	St. Benedict's College	H	W 65-61
1-27	Washburn University	H	L 79-73
1-28	Kansas City University	A	W 102-77
2-4	Washburn University	H	W 85-73
2-10	Omaha University	A	L 69-65
2-11	St. Benedict's College	A	L 83-77
2-18	Pittsburg State	H	W 79-74
2-23	Emporia State	A	L 85-68

1959-60 FHSU Basketball Results(15-6)

Date	Opponent	Site	Result
12-3	Southwestern Oklahoma	H	W 66-62
12-8	Kearney State	H	W 82-65
12-11	Colorado College	A	L 83-76
12-12	Colorado State at Greeley	A	W 83-72
12-15	Kansas City University	H	W 87-51
12-18	Colorado State at Greeley	H	W 73-66
	Westminster MO	A	L 78-71
12-28	@Southwestern College	N	W 69-65
12-29	@Ottawa University	A	W 76-70

12-30	@Southwestern College	N	W 75-61
1-9	Omaha University	H	W 83-44
1-16	Pittsburg State	A	L 67-62
1-23	Emporia State	H	W 56-44
1-29	St. Benedict's College	A	W 66-53
1-30	Omaha University	A	W 78-58
2-2	Kansas Wesleyan	H	W 97-67
2-6	St. Benedict's College	H	W 70-63
2-9	Washburn University	A	W 71-68
2-13	Emporia State	A	L 62-60
2-20	Pittsburg State	A	L 78-76
2-25	Washburn University	H	W 90-73

@-Ottawa Tournament-Ottawa, Ks

1958-59 Basketball Results(23-4)

Opponent	Result
Southwestern Oklahoma	W 79-54
Kearney State	W 69-46
Central Oklahoma	W 77-74
Kansas City University	W 77-69
Kansas Wesleyan	W 79-65
Colorado College	W 75-68
Eastern New Mexico	L 70-68
Southwestern Oklahoma	W 77-62
Kansas City University	W 68-57
Emporia State	W 77-67
St. Benedict's College	W 65-53
Southwestern College	W 68-66
Washburn University	W 71-55
Omaha University	W 70-53
Pittsburg State	W 63-51
St. Benedict's College	W 60-41
Washburn University	W 78-66
Southwestern College	W 75-57
Pittsburg State	L 63-61
Emporia State	W 56-55
@Ottawa University	W 86-71
@Ottawa University	W 79-70
#Westminster of Utah	W 73-60
#Arkansas State Teachers	OW 59-48
#West Virginia Wesleyan	W 98-83
#Pacific Lutheran	L 80-71
#Southwest Texas State	L 87-80

@-District 10 Playoffs

#-NAIA Championships-Kansas City, Ks

1956-57 FHSU Basketball Results(11-9)

Opponent	Result
Southwestern Oklahoma	W 109-92
Central Oklahoma	L 65-64
Kearney Teachers	W 73-56
Peru Teachers	W 91-77
Lincoln University	W 85-83
@Missouri Mines	L 70-64
@Eastern New Mexico	L 82-76
@Mississippi Southern	W 80-67
Emporia State	L 85-69
Washburn University	L 88-60
Kansas City University	W 91-79
Southwestern College	W 82-60
St. Benedict's College	W 63-60
Pittsburg State	W 76-74
St. Benedict's College	L 70-60
Emporia State	L 85-69
Kansas City University	L 88-65
Southwestern College	L 74-67
Pittsburg State	L 82-78
Washburn University	W 100-88

@-Sunshine Tournament

Media Outlets

Newspapers:

Hays Daily News - P.O. Box 857, 507 Main Street, Hays, KS. 67601. Telephone: (913) 628-1081 or 1-800-657-6017. Fax: (913) 628-8186. Sports Editor: Diane Gasper-O'Brien. Writers: Randy Gonzales and Terry Gaston.

University Leader - Fort Hays State University, 600 Park Street, Hays, KS. 67601. Telephone: (913) 628-5301.

Salina Journal - P.O. Box 779, Salina, KS. 67401. Telephone: (913) 823-6363 or 1-800-827-6363. Fax: (913) 823-3207. Sports Editor: Harold Bechard. Beat Writer: Troy Palenske.

Wichita Eagle Beacon - 825 East Douglas, Wichita, KS. 67201. Telephone: (316) 268-6251 or 1-800-825-6397. Fax: (316) 268-6536. Beat Writer: Van Williams.

Kansas City Star Times - 17329 Grand Avenue, Kansas City, MO. 64108. Telephone: (816) 234-4355. Fax: (816) 234-4360. Writers: Bill Richardson and Bob Luder.

Topeka Capital Journal - 616 Jefferson Avenue, Topeka, KS. 66607. Telephone: (913) 295-1188 or 1-800-777-7171. Fax: (913) 259-1230. Beat Writer: Ken Corbitt.

Hutchinson News - P.O. Box 190, Hutchinson, KS. 67501. Telephone: (316) 662-3311 or 1-800-766-3311. Fax: (316) 662-4186. Beat Writer: Bob Davidson.

Wire Services:

Associated Press - 215 West Pershing, Kansas City, MO. 64108. Telephone: (816) 421-4844 or 1-800-852-4844.

TIGER SPORTS NETWORK

KAYS (1400 AM) - 2300 Hall Street, Hays, KS. 67601. Telephone: (913) 628-2578. Sports Director: Steve Webster. Play-by-play flagship station Tiger Sports Network.

KCAY (95.5 FM) - P.O. Box 666, Russell, KS. 67665. Telephone: (913) 483-3121.

KKCI (102.5 FM) - P.O. Box 569, Goodland KS. 67735. Telephone: (316) 899-2309. Fax: (913) 899-3138.

KRSL (990 AM) - P.O. Box 666, Russell, KS, 67665. Telephone: (913) 483-3121.

KWLS (1290 AM) - P.O. Box 486, Pratt, KS. 67124. Telephone: (316) 672-5581. Fax: (316) 672-5582.

KHAZ (99.5 FM) - 2300 Hall Street, Hays, KS, 67601. Telephone: (913) 628-2538.

KJLS (103.3 FM) - 107 West 13th, Hays, KS 67601. Telephone: (913) 628-1064.

Television:

KBSH-TV (Channel 10, CBS affiliate) - 2300 Hall Street, Hays, KS. 67601. Telephone: (913) 625-5277.

KFHS-TV (Channel 12 on Hays Cable) - Fort Hays State University, 600 Park Street, Hays, KS. 67601. Telephone: (913) 628-4198.

FORT HAYS STATE UNIVERSITY

1992-93 MEN'S BASKETBALL SCHEDULE

<u>Date</u>	<u>Day</u>	<u>Opponent</u>	<u>Site</u>	<u>Time</u>
Nov. 12	Thu	RUSSIAN SELECT TEAM	HAYS, KS	7:30 p.m.
20	FRI	COUNTRY KITCHEN CLASSIC	HAYS, KS	8:00 p.m.
21	SAT	COUNTRY KITCHEN CLASSIC	HAYS, KS	TBA
24	TUE	TABOR COLLEGE	HAYS, KS	7:30 p.m.
27	Fri	@Metropolitan State Tournament	Denver, CO	4:00 p.m.
28	Sat	@Metropolitan State Tournament	Denver, CO	TBA
Dec. 3	THU	WASHBURN UNIVERSITY	HAYS, KS	7:30 p.m.
5	Sat	@Pittsburg State University	Pittsburg, KS	7:30 p.m.
7	Mon	@Rockhurst College	Kansas City, MO	7:30 p.m.
12	SAT	EMPORIA STATE UNIVERSITY	HAYS, KS	7:30 p.m.
19	Sat	@Emporia State University	Emporia, KS	8:00 p.m.
Jan. 9	Sat	@Nebraska-Kearney	Kearney, NE	8:00 p.m.
13	WED	BAKER UNIVERSITY	HAYS, KS	7:30 p.m.
16	SAT	NEBRASKA-KEARNEY	HAYS, KS	8:00 p.m.
22	FRI	CHADRON STATE COLLEGE*	HAYS, KS	8:00 p.m.
25	MON	COLO. SCHOOL OF MINES*	HAYS, KS	8:00 p.m.
28	THU	WESTERN STATE COLLEGE*	HAYS, KS	8:00 p.m.
30	SAT	MESA STATE COLLEGE*	HAYS, KS	8:00 p.m.
Feb. 2	TUE	ROCKHURST COLLEGE	HAYS, KS	7:30 p.m.
4	Thu	@New Mexico Highlands*	Las Vegas, NM	9:00 p.m.
6	Sat	@Adams State College*	Alamosa, CO	9:00 p.m.
12	Fri	@Western State College*	Gunnison, CO	9:00 p.m.
13	Sat	@Mesa State College*	Grand Junction, CO	9:00 p.m.
18	THU	NEW MEXICO HIGHLANDS*	HAYS, KS	8:00 p.m.
20	SAT	ADAMS STATE COLLEGE*	HAYS, KS	8:00 p.m.
26	Fri	@Colorado School of Mines*	Golden, CO	9:00 p.m.
27	Sat	@Chadron State College*	Chadron, NE	9:00 p.m.
Mar. 4-6		RMAC Post-Season Tournament	TBA	
12-13		NCAA II Regional Playoffs	TBA	
25-27		NCAA II Finals	Springfield, MA	

*Denotes Rocky Mountain Athletic Conference games

All Times Central