

Fort Hays State University

## FHSU Scholars Repository

---

Athletic Programs Collection

Archives Online

---

1988

### Fort Hays State University '88 Football Media Guide

Fort Hays State University

Follow this and additional works at: [https://scholars.fhsu.edu/athletic\\_programs](https://scholars.fhsu.edu/athletic_programs)

---

#### Recommended Citation

Fort Hays State University, "Fort Hays State University '88 Football Media Guide" (1988). *Athletic Programs Collection*. 123.

[https://scholars.fhsu.edu/athletic\\_programs/123](https://scholars.fhsu.edu/athletic_programs/123)

This Program is brought to you for free and open access by the Archives Online at FHSU Scholars Repository. It has been accepted for inclusion in Athletic Programs Collection by an authorized administrator of FHSU Scholars Repository.



# TIGER FOOTBALL '88



**FORT HAYS STATE UNIVERSITY**  
**Media Guide**

# Tigers' 1988 Schedule

Date	Opponent (Series Record)	Site	Time
Sept. 3	Western State (0-0-0) .....	Gunnison, CO	1:00 MDT
Sept. 10	NW OKLAHOMA ST (5-12-1) ..	HAYS, KS	7:00 CDT
Sept. 17	× CAMERON (0-1-0) .....	HAYS, KS	7:00 CDT
Sept. 24	● Kearney State (16-23-1) .....	Kearney, NE	2:00 CDT
Oct. 1	★ ● MISSOURI SOUTHERN (8-9-1)	HAYS, KS	2:00 CDT
Oct. 8	● Wayne State (5-5-1) .....	Wayne, NE	1:30 CDT
Oct. 15	● Pittsburg State (17-35-8) .....	Pittsburg, KS	2:00 CDT
Oct. 22	● MISSOURI WESTERN (9-3-0) ..	HAYS, KS	1:30 CDT
Oct. 29	● Emporia State (25-34-2) .....	Emporia, KS	1:30 CDT
Nov. 5	✓ ● WASHBURN (18-32-3) .....	HAYS, KS	2:00 CST

× - denotes Hall of Fame game

● - denotes Central States Intercollegiate Conference games

★ - denotes Homecoming game

✓ - denotes Parents' Day game

## 1987 FHSU Results (5-5, CSIC 4-3, 4th)

Date	Opponent and Result	Site	Attendance
Sept. 5	FHSU 55, Lincoln 14 .....	Hays, KS	4,322
Sept. 12	NW Oklahoma 26, FHSU 12 .....	Alva, OK	3,800
Sept. 19	Cameron 37, FHSU 12 .....	Lawton, OK	5,000
Sept. 26	Kearney State 44, FHSU 7 .....	Hays, KS	5,842
Oct. 3	Missouri Southern 38, FHSU 13 ..	Joplin, MO	4,000
Oct. 10	FHSU 29, Wayne State 24 .....	Hays, KS	6,012
Oct. 17	Pittsburg State 62, FHSU 13 .....	Hays, KS	1,853
Oct. 24	FHSU 23, Missouri Western 17 ....	St. Joseph, MO	3,000
Oct. 31	FHSU 40, Emporia State 20 .....	Hays, KS	3,579
Nov. 7	= Washburn 49, FHSU 12 .....	Topeka, KS	3,500

= - denotes forfeit by Washburn

## FHSU Quick Facts

**Location:** Hays, Kansas

**Mailing Address:** Fort Hays State University  
Athletic Department  
600 Park Street  
Hays, Kansas 67601-4099

**Enrollment:** 5,136

**Founded:** 1902

**President:** Dr. Edward H. Hammond

**Director of Athletics:** Robert Van Poppel

**Head Football Coach:** John Vincent

**Athletic Conference:** Central States  
Intercollegiate

**Nickname:** Tigers

**Colors:** Black and Gold

**Stadium:** Lewis Field (Natural Grass)

7,000 Capacity

**1987 Record:** 5-5 (4-3 CSIC, 4th)

## Important Numbers (Area Code 913)

**Athletic Department** ..... 628-4050

### **Football Staff:**

John Vincent (office) ..... 628-4397  
(home) ..... TBA

Duane Dirk (office) ..... 628-4398  
(home) ..... 628-3207

Pat Poore (office) ..... 628-4399  
(home) ..... 628-5753

### **Sports Information Director:**

Kim D. Kimbro (office) ..... 628-5903  
(home) ..... 625-8485

**Lewis Field Press Box** ..... 628-5316





# FHSU 1988 Media Guide

## Contents

Assistant Coaches .....	5
CSIC, Review of '87 .....	34
Coaching Records .....	35
Fort Hays State University .....	24
Fort Hays State and NFL .....	37
Hammond, President .....	26
History of Affiliations .....	38
Honor Roll .....	36-37
Lewis Field Stadium .....	25
Media Information .....	1
Media Outlets .....	IBC
Opponents .....	18-22
Outlook '88 .....	2-3
Phone Numbers .....	IFC
Player Profiles .....	9-17
Preseason Depth Chart .....	8
Quick Facts .....	IFC
Records .....	44-48
Results, 1987 .....	IFC, 32
Review, 1987 .....	30-33
Roster, FHSU, Alphabetical .....	6-7
Schedule, 1988 .....	IFC & BC
Scores with '88 Opponents .....	23
Series vs. Opponents .....	39
Statistics, 1987 .....	27-29
Van Poppel, Athletic Director .....	26
Vincent, Head Football Coach .....	4
Why the Tigers? .....	48
Year-by-Year Scores .....	40-43

## Credits

The 1988 Fort Hays State Football Media Guide was designed, written and edited by Kim Kimbro, FHSU Sports Information Director. Photography by Jack Jackson and student assistants at FHSU Photo Services. Additional information provided by FHSU University Relations.

## On The Cover

A collection of Tiger football memorabilia represents 75 years of organized football at Fort Hays State University.

## Media Information

The Tiger Football Media Guide was prepared by the Fort Hays State Information Office to assist the news media in its coverage of FHSU football. Requests for additional information, feature materials and photographs, will be readily granted. Please contact Kim Kimbro, Sports Information Director, for your specific requests.

## Credentials

Requests for credentials for Fort Hays State home games should be made at least one week prior to the game. Credentials will be limited to working press, radio, television and visiting information directors, and may be obtained through the Sports Information Office.

## Interviews

All requests for interviews with players and coaches must be channeled through the Sports Information Office. Post game interviews with Coach Vincent can be conducted following a 10 minute cooling off period outside the Tiger locker room. Player contact can be arranged after the game outside the locker room.

## Game Services

Media guides, programs and the latest statistical information will be available in the press box prior to all contests. Halftime statistics, play-by-play and final statistical booklets will be distributed to the media during halftime and approximately 10 minutes after each game.





Fans, players and coaches alike will visualize the days of yore when Red Grange ripped through the line in his leather helmet and high-top cleats to be met by any number of hard-nosed, growling opponents that had to knock heads with the great one. More often than not they then had to turn around and play offense in the pits to create holes as big as the Grand Canyon so that their running back, who often seemed inept compared to Grange, would have a chance to score. It will be a season surrounded by nostalgia, the 75th year of intercollegiate football at Fort Hays State University.

Grange was not a former Tiger, yet heroes like him play at every small college in America on Saturdays during the fall. Fort Hays State has had its share of heroes in football with the likes of Floyd "Cocky" Sexton, Abe Schneider, Ralph "Red" Huffman, Joe Jellison and John Byrd conjuring up memories of the old days.

The "new" days are filled with hope and expectation as another season is upon us. One component of the program has remained constant in three quarters of a century of football at FHSU and that is change.

A few of the changes this year include the final season of play in the CSIC as we have known it since 1976, the advent of more stringent academic rules in the NAIA and the ongoing changes in staff, personnel and schedule. Each will have a different effect on the 75th season, which is at least part of the reason why the players continue to suit up each year.

As far as head coach John Vincent is concerned, at least for the last two seasons, the more things change, the more they stay the same. "It will continue to be a building year for us. We're going to have another year that we will have a lot of young players," Vincent said. "We've got some good people waiting in the wings, but right now they've got to get eligible under the new standards."

## OFFENSE

The losses to the Tiger offensive unit include three linemen, a young running back that had just begun to run effectively and an All-American slotback. Those losses would not seem quite so drastic except that since spring ball a pair of transfers who would have made immediate contributions have been sidelined by the NAIA's new academic standards.

What Fort Hays State does have returning is a quarterback, Craig Modellmog, who threw for almost 2,000 yards and 11 touchdowns. Modellmog is back with a year of experience, yet he's only a sophomore. An outstanding receiving corps consisting of junior Tyrone Tracy, senior Dean Tenbrink, senior Jerald Demery, junior Jason Leiker and senior Kenny Faulkner will likely overshadow the loss of 1985 first team NAIA All-American Eric Busenbark. The returnees on offense accounted for 107 receptions for 1,556 yards and all 12 touchdowns in '87.

The running back situation is clouded with sophomore David Lemons and junior transfer Jeff Sinegal the best bets to earn playing time in the early spring. A trio of freshmen could also come to the front in Cary Henderson and Lonnie Hayes of Houston, TX., and Walter Burton of McKeesport, PA.

Vincent sees the problem area as the offensive line. "We will be similar as far as depth is concerned at the skill positions. We are going to be a little weaker on the line. We've got one real problem at tackle with the loss of Kevin Bruce due to a family situation."

Bruce, who was a valuable reserve and was slated to start this fall, chose to complete his degree over the summer and move on to his career. Also gone are guard Darryl Brzon, center Darryl Pittman and tackle Rob Ukleya. Senior guard Mike Shoff and sophomore tackle Joe Karas are expected to anchor the offensive front. Newcomer Bryan Jones, a junior transfer, will likely start at left guard while junior Dean Gengler is a probable starter at center after playing the same position in a reserve role last season.

## DEFENSE

It's quite the opposite story when it comes to experience on the defensive side of the ball for the Tigers in '88. Ten starters return and several of those players would have found themselves out of starting jobs if it weren't for more academic casualties to the new guidelines.

The FHSU head coach is confident that his staff can put a good defensive unit on the field. "Defense has got to be our strong point. There is some experience, depth and solid people back that are not going to get beat."

Solid is the best word to describe the Tiger secondary with all four players back that were starters at the end of last year's campaign. Senior strong safety Dusty Trail, sophomore free safety Kurt Dinkel, senior cornerback Steve Hefl and sophomore cornerback Mike Allen have proven their worth to the

FHSU squad. Allen replaced standout Greg Woodward in the fifth game last season and the unit has worked well together since.

Linebacker is another area where five returnees will provide depth and experience. Back are starters sophomore Brian Stindt and senior Edward Faagai along with senior Shawn McKinney, senior Delbert Trowell and junior transfer Kelly Sandell. With the competition at this position, Faagai will have to stay healthy to even have a shot at maintaining his starting role and may be moved to defensive end where his shoulder/neck problems might be less vulnerable.

The line will undergo major changes with most starting positions up for grabs. It's not that the talent isn't there, but players may be moved around to what best suits them during fall practices. Starters returning include sophomore Greg Yost, senior Rodney Vera, senior Ron Gordon, junior Duane Charbonneau and junior Doug Blank. Only Yost at a tackle spot and Blank at defensive end had a good hold on their former starting jobs at the close of spring ball. Newcomers Chris Capettini and Rich Gaffen will also vie for time along with returning senior Frank Brown who proved his value in several areas last season.

### SUMMARY

Most of the people involved with the CSIC over the last decade recognize the conference as one of the NAIA's best. Fort Hays State along with Emporia State, Kearney State and Wayne State plan to hold the conference together with hopes of adding new members. Vincent sees the new alignment as a positive move toward equality. "The league used to be more equitable than it is now. Pittsburg State and Washburn have pumped a lot of money into their programs, I'm glad they plan to implement rules to equate everyone in the new conference."

Changes like the NAIA's new academic standards, Pat Poore's switch from a secondary coach to offensive coordinator and only one new opponent, Western State of Colorado, on the '88 schedule are all minor hurdles Vincent and his staff must overcome.

Vincent vows that he will do whatever it takes to put the best Tiger squad on the field this season. He acknowledges that it may be a matter of choosing now over later as far as some players are concerned. "We are not going to be allowed the luxury of making redshirts of our quality freshmen this year. They're going to have to step in and do the job."

The bottom line is whether it's the first or 75th year of football at Fort Hays State, each team that took the field at the start of a new season faced new challenges and met them head on just as those spirited young men who lined up across from Red Grange.

## A Capsule Look

**1987 Record:** 5-5-0 overall; 4-3 CSIC, 4th

**Head Coach:** John Vincent (Fort Hays State '71)

**Years at FHSU:** Enters fourth season

**Three-year Record:** 16-13-1

**Three-year Head Coach Record:** 16-13-1

**Assistant Coaches:** Defensive Coordinator-Duane Dirk (Kansas State '80); Offensive Coordinator-Pat Poore (Fort Hays State '85)

**Graduate/Student Assistant Coaches:**

Jeff Jarnigan, Mike McCarthy, Monty Bennett, Randy Dreiling, Robert Underwood

**Starters Returning:** OFFENSE (6): SE-Jerald Demery, OT-Joe Karas, QB-Craig Modellmog, OG-Mike Shoff, SE-Dean Tenbrink, SB-Tyrone Tracy. DEFENSE (10): DB-Mike Allen, DE-Doug Blank, FS-Kurt Dinkel, NG-Ron Gordon, CB-Steve Heft,

LB-Brian Stindt, SS-Dusty Trail, DT-Rod Vera, DT-Greg Yost. KICKER (1): PK-Tom Odle.

**Starters Lost:** OFFENSE (5): OG-Darryl Brzon, SB-Eric Busenbark, C-Darryl Pittman, RB-Tim Winter, OT-Rob Ukleya. DEFENSE (1): DT-Cliff Rollins. KICKER (1): P-Henry Alexander.

**Lettermen Returning:** 37

**Lettermen Lost:** 12

**TOP NEWCOMERS:** C-Bryan Jones (Spokane Falls CC), RB-Jeff Sinegal (Southern Univ), SB-Bart Evans (Kansas Wesleyan), LB-Kelly Sandell (Hutchinson CC), RB-Cary Henderson (Northshore HS-Houston, TX), RB-Lonnie Hayes (Northshore HS), PK-Roy Miller (Sheridan HS-Denver, CO).





# Tiger Head Coach

## John Vincent

John Vincent has compiled a 16-13-1 record in three seasons as head coach of the Tiger football program. Vincent led FHSU to a 7-2-1 record and a number 12 ranking in the NAIA's final poll in his first year as a head coach.

A native of Medicine Lodge, KS, Vincent spent three seasons as an assistant at Fort Hays State before assuming head coaching responsibilities. He was responsible for coordinating the defense under Bobby Thompson in 1984 and held down the same position for Jim Gilstrap during the 1982 and 1983 seasons.

With experience in the high school and junior college ranks, Vincent has coached at all levels. In 1980-81, he was the defensive secondary coach at New Mexico Military Institute. He has also made stops at Victoria and Claflin high schools in his coaching career.

The Tiger head mentor received both his undergraduate and graduate degrees from Fort Hays State. He earned his Master of Science in physical education in 1982 and his Bachelor of Science in biology in 1971. While working on his master's degree, Vincent was a graduate assistant on the FHSU coaching staff.

Vincent attended Kansas State University prior to finishing his undergraduate work at Fort Hays State. His football playing career was cut short by a stint in the Army. He played cornerback and free safety on Army post teams that competed in inner service games. Vincent went out for Tiger spring ball in 1979 but was unable to continue playing due to an illness.

John and his wife, Mary, are the parents of twin sons, Shiloh and Tanner and also have one daughter, Shamra.



Head Coach John Vincent is the ninth winningest coach at FHSU after only three complete seasons.

### The Vincent Philosophy

*"Football is a game. I think you have to view it in that perspective. You have to be intense and concentrate on what you are doing, but you've got to keep it in perspective. If you are doing the best that you can and still lose, it is not life and death. It's not like you've been told you are going to be shot. I think it has to be approached as a teaching philosophy and not screaming, yelling and belittling the players. You have to teach your kids mental discipline and how to maintain composure. If you are going to play football it has to be a positive experience because it is enough hard work playing and practicing. You have to have some kind of rewards and its got to be fun, especially when you play a game."*



# Tiger Assistant Coaches

## Duane Dirk - Defensive Coordinator



Duane Dirk joined the Tiger coaching staff in the spring of 1987 and gave new life to the defense as a coordinator. Dirk came to FHSU following a successful stint at Coffeyville Community College as an assistant in Dick Foster's respected program.

Dirk had responsibilities as the defensive coordinator, and with the defensive line, linebackers and strength and conditioning in his four year stay at Coffeyville. The Red Ravens posted a 39-7 record from 1983-87, won a NJCAA National Championship in 1983 and were the Kansas Jayhawk Juco Conference's best defense and ranked 10th nationally in 1986, all while Dirk was a part of the program.

A native of Milwaukee, WI, Dirk played varsity football at Kansas State University. He was a three-year starter at defensive tackle, academic all-America (1979), all-Big Eight Academic (1979) and honorable mention all-Big Eight (1979). Dirk also held graduate assistant and part-time assistant coaching positions at his alma mater from 1979 to 1983.

Duane and his wife, Melody, have four children: Duane, Jr., twins John and Jennifer, and Travis.

## Pat Poore - Offensive Coordinator



Pat Poore has been involved in the Tiger football program since 1980 when he signed out of high school to play for FHSU. He will switch sides of the ball this season as the offensive coordinator after three seasons as a defensive secondary coach.

Poore was a four-time letterwinner on the Fort Hays State football squad at free safety. He played some quarterback as a freshman and sophomore. Was named to the first team All-District 10 and All-CSIC squads as a senior. He still holds a share of the Tiger career record for interceptions with 11.

The Stockton, KS, native joined the coaching staff as a student assistant in the spring of 1985 after the completion of his final season as a player. He was named a full-time assistant in the spring of '87. Poore earned his bachelor's degree in physical education in 1984 and completed work on his master's in 1986. He has also been given additional responsibilities as the administrator of the FHSU baseball program.

Pat and his wife, Gwen, have a toddler son, Trevor, who will be one year old in September.

## Graduate/Undergraduate Assistant Coaches

### Monte Bennett

Assignment: Defensive Ends  
Years at FHSU: First (started spring '88)  
Degree: B.S. - Completing at FHSU after 3 years at Kansas State  
Coaching Experience: Assistant at San Mateo CC  
Playing Experience: Oakland Invaders (USFL) - 3 years  
New Orleans Saints (NFL) - 2 years  
San Diego Chargers (NFL) - 1 year  
Kansas State - 4 years

Miscellaneous: All-Big Eight '80  
Hometown: Sterling, Kansas

### Mike McCarthy

Assignment: Defensive Line  
Years at FHSU: Second  
Degrees: B.S. - Baker '87  
M.S. - Completing at FHSU

Coaching Experience: First position  
Playing Experience: Scottsdale Community College

- 2 years  
Baker - 2 years

Miscellaneous: All-Conference at Scottsdale and Baker  
National runner-up in '86 at Baker

Hometown: Pittsburgh, Pennsylvania

### Randy Dreiling

Assignment: Running backs  
Years at FHSU: First (started spring '88)  
Degrees: B.S. - Benedictine '83  
M.S. - Completing at FHSU

Coaching Experience: Pratt High School  
Vail (CO) High School

Miscellaneous: Is married, wife's name is Cathy, has one son Blake and one daughter Ashley

Hometown: Victoria, Kansas

### Jeff Jarnigan

Assignment: Offensive Line  
Years at FHSU: Second  
Degrees: B.S. - Southwestern '87  
M.S. - Completing at FHSU  
Coaching Experience: Student assistant - Southwestern  
Playing Experience: Southwestern - 3 years  
Miscellaneous: All-KCAC '86  
Hometown: Midwest City, Oklahoma

### Rob Underwood

Assignment: Linebackers  
Years at FHSU: First  
Degrees: B.S. - Bethany  
M.S. - Completing at FHSU  
Coaching Experience: First position  
Playing Experience: Bethany - 2 years  
Hometown: Seminole, OK





# '88 Alphabetical Roster

## Fort Hays State University Football Roster

NAME	POS	HGT	WGT	CL/EXP	HOMETOWN (High School/Last School)
*Mike Allen	DB	5-9	174	SO/1L	Denver, CO (Alameda)
John Befort	DL	6-2	220	SO/1L	Ellis, KS (Ellis)
*Doug Blank	DE	6-1	205	JR/1L	Grinnell, KS (Grinnell)
David Braun	OL	6-3	265	SO/SQ	St. Cloud, FL (St. Cloud)
Frank Brown	DL	6-4	223	SR/1L	Cape May, NJ (Middle Township)
Chris Capettini	DE	6-2	220	FR/RS	Golden, CO (Wheat Ridge)
*Duane Charbonneau	DB	6-0	195	JR/1L	Clyde, KS (Clifton-Clyde)
Kenny Crandall	SB	6-0	168	SO/1L	Longmont, CO (Niwtot)
Jeff Daily	DE	6-2	230	FR/HS	Manhattan, KS (Manhattan)
Kenneth Dean	DB	5-10	185	JR/TR	Kansas City, KS (Coffeyville CC)
*Jerald Demery	WR	5-9	165	SR/1L	Oceanside, CA (El Camino)
Dan Dierks	WR	5-9	160	SO/SQ	Maumelle, AR (Sulphur Springs, TX)
*Kurt Dinkel	DB	6-0	168	SO/1L	Victoria, KS (Victoria)
Bart Evans	SB	5-11	195	SR/TR	Billings, OK (Marymount)
Edward Faagai	LB	6-0	220	SR/2L	Waianae, HI (Waianae)
Kenny Faulkner	WR	6-1	170	SR/1L	Memphis, TN (East)
Charles Floyd	CB	6-0	170	SR/1L	Chicago, IL (Western Kentucky)
Rich Gaffen	DL	6-3	260	SR/TR	Concord, CA (Sacramento State)
Dean Gengler	OL	6-0	235	JR/1L	Beloit, KS (St. John's)
*Ron Gordon	NG	6-0	215	SR/1L	Lynwood, CA (Lynwood)
Walter Grier	SE	5-9	160	JR/TR	Fort Pierce, FL (E. Arizona CC)
Rob Gruendell	DB	5-9	163	FR/HS	Littleton, CO (Alameda)
Gary Hanus	RB	5-11	195	SO/SQ	Riley, KS (Riley County)
*Steve Heft	CB	6-0	180	SR/2L	Greensburg, KS (Greensburg)
Garret Hicks	WR	5-9	160	SO/1L	Macon, MO (Macon)
Doug Holthaus	DE	6-0	200	SO/SQ	Marysville, KS (Marysville)
Bryan Jones	OL	6-3	268	JR/RS	Seattle, WA (Chief Sealth)
*Joe Karas	OL	6-5	245	SO/1L	Fort Morgan, CO (Fort Morgan)
Jason Leiker	WR	6-1	175	JR/1L	Hays, KS (Hays)
David Lemons	RB	6-1	216	SO/1L	Kansas City, MO (O'Hara)
Wallace Long	LB	5-10	200	FR/RS	Scott City, KS (Scott Community)
Shawn McKinney	LB	5-11	240	SR/1L	McCracken, KS (McCracken)
Matt McNamee	DB	5-9	155	SO/SQ	Lincoln, KS (Lincoln)
Billy Maddy	DB	6-0	160	FR/RS	Stockton, KS (Stockton)
Jeff Mangus	DE	6-1	190	FR/RS	Burlington, CO (Burlington)
Brad Miller	DB	5-11	187	SO/RS	Natoma, KS (Natoma)
*Craig Modellmog	QB	6-1	190	SO/1L	Fort Collins, CO (Fort Collins)
Tom Odle	K	5-8	170	JR/2L	Brush, CO (Brush)
Doug Peters	OT	6-5	245	SR/1L	Little River, KS (Little River)
Justin Price	LB	5-10	180	FR/RS	Latham, KS (Latham)
Kelly Sandell	LB	6-1	202	JR/TR	Caldwell, KS (Hutchinson CC)
Tom Satterly	OL/DL	6-3	220	FR/RS	Burlington, CO (Burlington)
Joel Sawalich	DB	5-10	180	SR/1L	Kansas City, KS (Bonner Springs)

Richard Sharpley	DE	6-1	205	SO/SQ	Lenora, KS (Lenora)
*Mike Shoff	OL	6-3	265	SR/1L	Maywood, NE (Lincoln)
Kevin Simien	SB	6-2	200	JR/TR	Port Arthur, TX (Oklahoma State)
Jeff Sinegal	RB	5-11	198	JR/TR	Duson, IA (Southern Univ)
*Brian Stindt	LB	6-1	210	SO/1L	Belleville, KS (Belleville)
*Dean Tenbrink	WR	5-11	170	SR/1L	Dodge City, KS (Dodge City)
*Tyrone Tracy	SB	5-11	176	JR/2L	Indianapolis, IN (Ben Davis)
*Dusty Trail	DB	5-11	185	SR/1L	Osborne, KS (Osborne)
Charles Tribble	NG	6-0	230	SR/1L	Phoenix, AZ (Riverside Poly, CA)
Delbert Trowell	LB	6-0	205	SR/1L	Momence, IL (Momence)
*Rod Vera	DT	6-0	235	SR/1L	Manhattan, KS (Manhattan)
Chris Warren	DB	6-0	148	FR/RS	Denver, CO (Montbello)
Kevin Weber	NG	5-10	205	SO/1L	Ellis, KS (Ellis)
Calvin Williams	DE	6-3	243	SR/TR	Greenville, TX (Arkansas)
Rodney Wiltfong	DB	6-1	175	SO/TR	Norton, KS (Garden City CC)
*Greg Yost	DL	6-2	240	SO/1L	Hays, KS (Gorham)

\* - indicates returning starter

## 1988 FHSU High School Signees

NAME	POS	HGT	WGT	HOMETOWN (High School)
Eugene Brown	DB	6-1	175	Houston, TX (Northshore)
Walton Burton	RB	5-9	170	McKeesport, PA (McKeesport)
Robert Felice	WR	6-2	210	Colorado Springs, CO (Doherty)
Abe Garcia	DB	5-10	180	Houston, TX (Northshore)
Trey Grantz	DL	6-2	210	Windsor, CO (Windsor)
Bobby George	OL	6-1	230	Houston, TX (Northshore)
Lonnie Hayes	RB	6-1	200	Houston, TX (Northshore)
Cary Henderson	RB	5-6	165	Baytown, TX (Baytown Sterling)
Bill Lancaster	OL/DL	6-4	215	Overland Park, KS (Blue Val. Nor.)
Roy Miller	PK	5-8	180	Denver, CO (Sheridan)
Michael Nason	SE	6-3	190	Ensign, KS (Cimarron)
John Neuschafer	RB	5-10	222	Cimarron, KS (Cimarron)
James Pamplin	LB	6-3	195	Pittsburgh, PA (Schenley)
Trent Platte	SN	5-11	175	Windsor, CO (Windsor)
Michael Reeves	OL/DL	6-4	255	Checotah, OK (Checotah)
Mike Richards	OL/DL	6-0	237	Checotah, OK (Checotah)
Rusty Seratte	DL	6-3	210	Oologah, OK (Oologah)





## Preseason Depth Chart

## OFFENSE

Kenny Faulkner  
Jason Leiker

SE  
O

Doug Peters

LT  
O

Bryan Jones  
Warren Mahan

LG  
O

Dean Gengler  
Bryan Jones

CO

**MIKE SHOFF**  
David Braun

RG  
O

**JOE KARAS**  
Tom Satterly

RT  
O

JERALD DEMERY  
DEAN TENBRINK

SE  
O

Kevin Simien  
Kenny Crandall

OSB

**O** TYRONE TRACY  
**SB** Bart Evans

OB CRAIG MODELMOG

**O** Jeff Sinegal  
**RB** David Lemons

## DEFENSE

**DOUG BLANK**  
Doug Holthaus

DE  
X

Eric Muse  
Rich Gaffen

DT  
X

ROD VERA  
RON GORDON  
Charles Tribble

NG  
X

GREG YOST  
FRANK BROWN

DT  
X

Clint Farlin  
Chris Cappettini

DE  
X

Shawn McKinney  
EDWARD FAAGAI

**X  
LB**

**X** **BRIAN STINDT**  
**LB** Kelly Sandell

X  
CB

MIKE ALLEN  
Kenneth Dean

X  
SS

DUSTY TRAIL  
Duane Charbonneau

X  
FS

KURT DINKEL  
Chris Warren

X  
CB

STEVE HEFT  
Rob Gruendell

All CAPS denotes returning starter



# Tiger Veteran Profiles

## Mike Allen

CB 5-9 174 Sophomore Denver, CO

**CAREER:** Mike is one of very few freshmen to play without benefit of a redshirt season under head coach John Vincent. Was a starter in six games last season and is projected to start at cornerback when the '88 campaign begins. Ranked ninth on the squad in total tackles with 40. Had a high of nine tackles (six unassisted) against Pittsburg State. Was a three-time letterman in football and track at Alameda High School in Denver. Earned all-conference honors as a junior and senior in football. Also played running back in high school with a best of 223 yards and two touchdowns against Wheat Ridge. **PERSONAL:** Born January 8, 1969 . . . undecided on a major . . . son of John and Alice Allen . . . lists Walter Payton, Eric Dickerson and Michael Jordan as favorite athletes.



### ALLEN'S DEFENSIVE STATISTICS

Year	Games	UT	AT	TOT	Loss	FR	INT	PBR	Sacks
1987	9	25	15	40	1-3	0	1	2	0

## Doug Blank

DE 6-1 190 Junior Grinnell, KS

**CAREER:** Doug started the Tigers' first three games of '87 and played in eight contests. Best outing was the season opener against Lincoln when he made five tackles including a quarterback sack and 18 yards in losses. He also blocked a punt against Missouri Western for a safety. Is on track to earn his starting defensive end job back, but will get stiff competition from several other players. Was a redshirt in 1986 and played for the FHSU junior varsity in 1985. Is a President's Scholarship recipient at FHSU. Lettered in football, basketball and track for four years each as a prep athlete at Grinnell High School. Was an all-state pick in football as a senior. Earned all-area and All-Liberty League recognition in both football and basketball. Selected to Who's Who in High School Football. **PERSONAL:** Born October 25, 1966 . . . is an industrial arts major . . . guardian is Gail Blank . . . lists Tom Jackson as favorite athlete.



### BLANK'S DEFENSIVE STATISTICS

Year	Games	UT	AT	TOT	Loss	FR	INT	PBR	Sacks
1987	8	13	10	23	4-21	1	0	0	1

## Frank Brown

DT 6-4 243 Senior Cape May, NJ

**CAREER:** Frank was the squads second leading tackler last season with 56 total stops. He is expected to move from defensive end to defensive tackle this fall. Played in all 10 games in '87 with starts in nine of those contests. Was the Tigers' best pass rusher with a team-high six quarterback sacks. Also excelled as a wedge buster on the kickoff team. Had his best outings against Northwestern Oklahoma State and Cameron with nine and 10 tackles, respectively. Also had two quarterback sacks for 21 yards in losses against Northwestern Oklahoma State. Was recognized as an honorable mention All-CSIC selection. Played two years at Gloucester County College in Sewell, NJ. Was a three-time letterwinner in football, basketball and track at Middle Township High School. Was a first team all-conference pick in basketball and earned second team honors in football. **PERSONAL:** Born September 24, 1963 . . . undecided on a major . . . son of Frank H. and Irene Brown . . . lists Magic Johnson as favorite athlete.



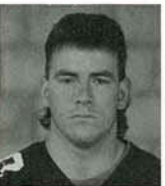
### BROWN'S DEFENSIVE STATISTICS

Year	Games	UT	AT	TOT	Loss	FR	INT	PBR	Sacks
1987	10	38	18	56	10-47	1	0	2	6

## Duane Charbonneau

SS 6-0 195 Junior Clyde, KS

**CAREER:** Duane started all 10 games as a defensive end for FHSU in '87, but will make the move to strong safety this season. Was one of only three defensive players to start every game. He was the top tackler for the Tigers with 59 total tackles. Had more than six stops in six games last year with a season high nine against Northwestern Oklahoma State. Had only one sack, yet had six tackles for a loss which totaled 31 yards. Was a redshirt in '86 when Vincent held back almost all freshmen and sophomores. Played junior varsity ball as a freshman. Lettered three years in football, basketball and track as a prep at Clifton-Clyde High School. Honored as an all-state, all-area and all-league pick in football and earned all-league recognition in basketball. **PERSONAL:** Born September 28, 1966 . . . is a business finance major . . . son of Ernest and Evelyn Charbonneau . . . lists Rolando Blackman as favorite athlete.



### CHARBONNEAU'S DEFENSIVE STATISTICS

Year	Games	UT	AT	TOT	Loss	FR	INT	PBR	Sacks
1987	10	35	24	59	6-31	2	0	1	1





# Tiger Veteran Profiles



## Kenny Crandall

SB 6-0 168 Sophomore Longmont, CO

**CAREER:** Kenny saw action in three games as a member of the offensive unit, but played mostly on the Tigers' special teams in '87. Was in unfortunate predicament of playing behind starting slotbacks Eric Busenbark and Tyrone Tracy. Will likely see action this year after a good spring showing. Was successful in his limited playing time with a 31 yard run and a nine yard touchdown reception against Lincoln in the season opener last season. Was also used as a holder on place kicks and on one occasion completed a pass to kicker Tom Odle for a seven yard loss. Was a redshirt as a freshman in 1986. Earned letters in football, basketball and baseball at Longmont

mont High School. Honored as an all-state, All-Boulder Country and all-area performer as a senior in football. **PERSONAL:** Born November 6, 1967 . . . is a business management major . . . son of Steve Crandall and Judy Londie . . . lists Steve Watson as favorite athlete.

### CRANDALL'S OFFENSIVE STATISTICS

Year	Games	Att	Yards	Avg	TD	Recp	Yards	Avg	TD
1987	3	1	31	31.0	0	1	9	9.0	1



## Jerald Demery

SE 5-9 165 Senior Oceanside, CA

**CAREER:** Jerald was the Tigers' starter at split end in all eight contests in which he saw action. Is penciled in as the starter again heading into fall practice. Was third on the '87 team in pass receptions with 17. Averaged 11.1 yards per catch and 23.6 per game. Was also a key member of the kickoff return team with six attempts for 115 yards. Had a personal best four receptions for 46 yards against Wayne State. He is also a member of the FHSU track squad. Played football two seasons at Palomar Junior College in San Marcos, CA, before coming to FHSU. Was also a football and track standout at El Camino High School in Oceanside. **PERSONAL:** Born

November 27, 1967 . . . is a communications major . . . son of Carmen J. McKay.

### DEMERY'S OFFENSIVE STATISTICS

Year	Games	Att	Yards	Avg	TD	Recp	Yards	Avg	TD
1987	8	0	0	0.0	0	17	189	11.1	0



## Kurt Dinkel

FS 6-0 168 Sophomore Victoria, KS

**CAREER:** Kurt emerged as a steady defensive back after a spectacular start and played in nine games with starting assignments in four of the Tigers last five contests. He was held out because of an injury against Emporia State. Is a probably starter at free safety for '88. Was named the CSIC's Player-of-the-Week following his performance against Lincoln. Against the Blue Tigers he had seven tackles (six unassisted), a blocked punt for a safety, a fumble recovery, a tackle for a loss and two passes broken up. He finished the season ranked seventh in total tackles with 46. Was the Tigers' top tackler in three games with a high of 14 against Wayne State. Played his prep ball at

Victoria High School where he helped the Knights to a state championship. He earned three football letters in high school. Honored as an all-area and All-Mid-Continent League pick as a senior. **PERSONAL:** Born February 11, 1968 . . . is an accounting major . . . son of Otto and Carol Dinkel . . . lists Julius Erving as favorite athlete.

### DINKEL'S DEFENSIVE STATISTICS

Year	Games	UT	AT	TOT	Loss	FR	INT	PBR	Sacks
1987	9	27	19	46	1-1	2	1	5	0



## Bart Evans

SB 5-11 195 Senior Billings, OK

**CAREER:** Bart is a newcomer to the Tiger squad after playing at Kansas Wesleyan. Started his collegiate career at West Texas State where he played one season before transferring to the Coyote program where he played two years. Was a third team All-American punter while at Kansas Wesleyan. Also named to All-KCAC squad as a junior. Will play slotback at FHSU where he is expected to back up Tyrone Tracy. He was a letterwinner in football, baseball, basketball and track at Billings High School. Was an all-state and MVP on all-area squad as prep gridder. **PERSONAL:** Born February 12, 1966 . . . is a physical education major . . . son of Jim and Carey

Evans . . . lists Michael Jordan as favorite athlete.

## Edward Faagai

LB 6-0 220 Senior Waianae, HI

**CAREER:** Edward has played in 15 games the last two seasons for Fort Hays State. He started three games at linebacker in '87 and has been hampered during his career with neck and shoulder problems. He will have to stay healthy and beat out several teammates to see much action this season. Was 10th on last year's squad in tackles with 37. Had a team-high 11 tackles versus Northwestern Oklahoma State last fall and his career best was a 12 tackle (4 unassisted, 8 assisted) performance against Missouri Southern as a sophomore. His eight assisted tackles was a FHSU single game individual high in '86. Played two seasons at West Hills JC prior to his transfer to the Tiger program. Was a grid letterman at Waianae High School. **PERSONAL:** Born on July 22, 1963 . . . is a business major . . . son of Pili and Vai Pou Faagai.



### FAAGAI'S DEFENSIVE STATISTICS

Year	Games	UT	AT	TOT	Loss	FR	INT	PBR	Sacks
1986	8	20	26	46	2-4	0	1	1	1
1987	7	21	16	37	1-2	0	1	0	0
<b>TOTALS</b>	<b>15</b>	<b>41</b>	<b>42</b>	<b>83</b>	<b>3-6</b>	<b>0</b>	<b>2</b>	<b>1</b>	<b>1</b>

## Kenny Faulkner

SE 6-1 170 Senior Memphis, TN

**CAREER:** Kenny played in six games last season at split end. He became a valuable player at that position after Jason Leiker was sidelined for the season with a broken hand. He is likely to figure heavily into the plans of new offensive coordinator Pat Poore with the use of four wide receivers that rotate into the lineup. Faulkner tied for fourth on the team in receptions with 14. He averaged 10.0 yards per catch and 23.3 yards per game. Had one rushing attempt and one kickoff return proving his versatility. Came to the Tigers on a track scholarship, but made the switch to football in the spring of '86. Earned all-Region VI and all-conference honors in the 400 meters while at Barton County Community College. Was honorable mention all-state, all-district and All-Memphis as a prep griddier. Also garnered honorable mention All-America honors in track while at Memphis' West High School. **PERSONAL:** Born February 16, 1965 . . . is a physical education major . . . son of Katherine Faulkner . . . lists Ronnie Lott as favorite athlete.



### FAULKNER'S OFFENSIVE STATISTICS

Year	Games	Att	Yards	Avg	TD	Recp	Yards	Avg	TD
1987	6	1	2	2.0	0	14	140	10.0	0

## Dean Gengler

C 6-0 235 Junior Beloit, KS

**CAREER:** Dean saw action in every contest last season with most of his playing on the special teams, in special situations and as a reserve offensive lineman. Will vie for a starting spot at center this year. Played both center and guard in '87 and even lined up in the offensive backfield to give the Tigers extra blocking in short yardage situations. Was a redshirt player in 1986 and saw junior varsity action as a freshman in 1985. Was a standout student-athlete at St. John's High School with letters earned in football, basketball and track. Honored as an all-area and all-league performer in both football and basketball. Academic recognition included selection included selection as a state of Kansas scholar and salutatorian of senior class. **PERSONAL:** Born February 12, 1967 . . . is a history major . . . son of Bob and Lois Gengler . . . lists Jim Burt as favorite athlete.



## Ron Gordon

NG 6-0 215 Senior Lynwood, CA

**CAREER:** Ron started eight games for the Tigers in '87 and played in all 10 games. Will face tough competition for playing time this season with Rod Vera's move to nose guard and returnee Charles Tribble pushing him again this season. Ranked 11th on the squad in tackles with 32. Had one quarterback sack and three tackles for loss (-16 yards). Played two seasons at El Camino Junior College where he earned All-South Coast Conference honors. Lettered twice in football at Lynwood High School. He was recognized as All-San Gabriel Valley League and All-Southeast Los Angeles by the Press Telegram and was selected to play in 605 All-Star Game as prep player. **PERSONAL:** Born September 30, 1966 . . . is a business administration major . . . son of Joe Gordon and Ann McDaniel . . . lists Magic Johnson as favorite athlete.



### GORDON'S DEFENSIVE STATISTICS

Year	Games	UT	AT	TOT	Loss	FR	INT	PBR	Sacks
1987	10	15	17	32	3-6	0	0	0	0





# Tiger Veteran Profiles

## Steve Heft



CB 6-0 180 Senior Greensburg, KS

**CAREER:** Steve is a returning starter at cornerback where he was the squads sixth best tackler with 49 stops (36 unassisted). He is another of three Tigers that started every game in '87. Tied for the team high in passes broken up with five. Was only regular in secondary that did not have an interception. Had a personal best 10 tackles against Emporia State including nine unassisted and also added three passes broken up against the Hornets. Played in five games during the '86 campaign and was a member of the squad in the spring of that same year. He transferred to FHSU in January of '86 after attending Kansas State University for a year and a half. Was a

member of the FHSU indoor track and field squad last winter. Was a three sport letterwinner at Greensburg High School in basketball, football and track. Played tailback as a prep griddier. Ran the 100 yard dash, 200 yard dash and mile relay well enough to place in all three at the state track meet. **PERSONAL:** Born January 17, 1966 . . . is a management major . . . son of Dayle and Sherrell Heft . . . lists Lyle Alzado as favorite athlete.

### HEFT'S DEFENSIVE STATISTICS

Year	Games	UT	AT	TOT	Loss	FR	INT	PBR	Sacks
1986	5	4	1	5	0-0	1	0	0	0
1987	10	36	13	49	0-0	0	0	5	0
<b>TOTALS</b>	<b>15</b>	<b>40</b>	<b>14</b>	<b>54</b>	<b>0-0</b>	<b>1</b>	<b>0</b>	<b>5</b>	<b>0</b>

## Bryan Jones



OG/C 6-3 268 Junior Seattle, WA

**CAREER:** Bryan sat out last season and had the benefit of playing spring ball with the Tigers. Is projected as a starter at left guard and also may see time at center. Prior to his transfer to Fort Hays State, he played two seasons at Spokane Falls Community College. Was named to the All-Northwest Association of Community College team following his sophomore season. Earned letters in football, cross country and track while at Chief Sealth High School in Seattle. As a prep, was named to all-league squad at center and defensive tackle. Former St. Louis Cardinal running back Terry Metcalf is related to Bryan. **PERSONAL:** Born June 29, 1967 . . . a business major . . . son of James and Jackie Jones . . . lists Howie Long as favorite athlete.

## Joe Karas



OT 6-5 245 Sophomore Fort Morgan, CO

**CAREER:** Joe was a full time starter in '87 for the Tigers after a redshirt seson as a freshman. Was vital to the squad on the offensive line which contributed to the teams ranking as the CSIC's best passing team and at 206.1 yards per game finished ninth in the NAIA in the same category. Will start again this season and should be even better with the size and strength he has added as a third year player. Was awarded letters in football, basketball and track as a prep athlete at Fort Morgan High School. Earned all-state honors as an offensive tackle and was recognized as an all-conference player on both sides of the ball. **PERSONAL:** Born August 7, 1968 . . . is a graphic design

major . . . son of Junior and Virginia Karas . . . lists Mark Gastineau as favorite athlete.

## Jason Leiker



SE 6-1 175 Junior Hays, KS

**CAREER:** Was a starter in FHSU's first three games of '87 and likely would have kept his job if not for a broken hand he sustained on the opening kickoff of the Kearney State game. Was effective in limited action with four receptions for 67 yards and two touchdowns. One of his scores came against Cameron when a ball was jarred loose of Tyrone Tracy and he hauled in the deflected ball for a 47-yard TD. He has fully recovered from the injury and is expected to start again this season. Was one of a large group of redshirts in '86. Played junior varsity ball for the Tigers in '85. Was a standout performer at Hays High School where he garnered three letters each in foot-

ball and track. Earned Hays Daily News All-Area and All-Western Athletic Conference recognition as a senior. Was a member of the National Honor Society in high school. **PERSONAL:** Born February 27, 1967 . . . a sociology major . . . son of James and Sherry Leiker . . . lists Danny White as favorite athlete.

### LEIKER'S OFFENSIVE STATISTICS

Year	Games	Att	Yards	Avg	TD	Recp	Yards	Avg	TD
1987	3	0	0	0.0	0	4	67	16.8	2

## David Lemons

RB 6-1 216 Sophomore Kansas City, MO

**CAREER:** David was pressed into action last fall due to the Tigers lack of depth in the offensive backfield. Played in eight games and earned starting berths in two contests. Was FHSU's third best ball carrier while rushing for 137 yards on 32 carries. His best outing was his debut at FHSU when he carried nine times for 57 yards against Lincoln. Scored his only touchdown to cap off an upset Tiger victory over Emporia State. Had three kickoff returns for 38 yards and a 12.7 average. Excelled in football, basketball and track at O'Hara High School in Kansas City where he earned letters in all three sports. Was named twice to the all-conference team as a prep gridder. **PERSONAL:** Born April 26, 1968 . . . undecided on major . . . son of David and Gloria Lemons.



### LEMON'S OFFENSIVE STATISTICS

Year	Games	Att	Yards	Avg	TD	Recp	Yards	Avg	TD
1987	8	32	137	4.3	1	1	-5	-5.0	0

## Shawn McKinney

LB 6-0 240 Senior McCracken, KS

**CAREER:** Shawn was hampered by a knee injury which occurred in a preseason scrimmage against Dodge City CC. Consequently, he saw action in only six games with one starting assignment. He is expected to return healthy in '88 and will vie for a starting job. Has the ability to make the big play and proved that with a big hit and fumble recovery against Pittsburg State last season. Transferred to FHSU from Northwestern Oklahoma State where he played in '86. Also attended Pratt Community College in 1984-85. Was an all-state, all-area and all-conference grid performer at McCracken High School. He also earned letters in football, basketball and track as a prep athlete. **PERSONAL:** Born May 13, 1966 . . . is an exercise science major . . . son of William and Barbara McKinney . . . lists Howie Long as favorite athlete.



### MCKINNEY'S DEFENSIVE STATISTICS

Year	Games	UT	AT	TOT	Loss	FR	INT	PBR	Sacks
1987	6	6	10	16	0-0	1	0	0	0

## Craig Modellmog

QB 6-1 190 Sophomore Fort Collins, CO

**CAREER:** Craig was the starting quarterback from the beginning of fall practice last season. Is projected as the starter again this season and is without competition heading into the '88 campaign. He performed quite well in his first season as a collegiate player. Threw for nearly 2,000 yards while completing 138 of 291 for a .474 percentage. He found 11 Tiger receivers for touchdown passes. Had a high interception total of 16, but only five of those came in the last half of the season. He was named the CSIC Player-of-the-Week in his first game against Lincoln. Against the Blue Tigers, he was 13 of 26 for 168 yards and threw touchdown passes of five and 17 yards. He also ran the ball nine times for 56 yards and had two TD runs of seven yards each. Another of his better outings came in a win over Wayne State when he completed 22 of 34 for 314 yards and threw TD passes of 36 and 33. He suffered a shoulder separation on the first series against Washburn in the final game and did not return. Was a redshirt in '86 when he was being groomed to replace Jeff Miller. Miller left the squad prior to the start of fall workouts last year and Modellmog assumed the starting role. Was awarded letters in football, basketball and baseball as a prep at Fort Collins High School. Honored as an all-state selection in football as a junior and senior and in baseball as a senior. Also earned all-conference recognition in both sports. Threw for 375 yards in a state playoff contest and set a single game record for completions with 28 in another game.



### MODELMOG'S OFFENSIVE STATISTICS

Year	Games	COMP	ATT	INT	PCT	YARDS	TD	ATT	Yards	AVG	TD
1987	10	138	291	16	.474	1,938	11	99	-223	-2.3	2

## Tom Odle

PK 5-8 170 Senior Brush, CO

**CAREER:** Tom begins his fourth season as a Tiger and again will have to perform well to win the placekicking duties. Last season he split time with senior Steve Schroeder on both field goals and extra points. Connected on three of four field goals in '87 with a long of 36 against Cameron. Was only five of nine on extra point conversions. Was also used on kickoffs last year because of the strength of his leg. His '86 season was just the opposite of last fall when he fared better kicking extra points (23 of 26 for a percentage of .884) than he did at field goals (two of 10 for a percentage of .200). He ranked fourth on the team in scoring with 29 points in '86. Overall, the 1985 season was his best when he set a FHSU mark for most extra points in a season with 31 in and was se-







# Tiger Veteran Profiles

cond on the squad in scoring with a total of 43 points. His career best outing came in his home state against Adams State when he hit for field goals of 41 and 44 yards and made good on four of four PAT's all as a first-year Tiger. He attended the University of Northern Colorado as a freshman but did not play football. Was a letterman in baseball, football and wrestling at Brush High School. Won honors as an all-conference pick in all three sports while collecting all-area recognition in baseball and all-state honors in football. He also played quarterback, runningback, linebacker and nose guard as a prep athlete. **PERSONAL:** Born March 12, 1966 . . . is a physical education major . . . son of James and Ruth Ann Odle . . . lists John Elway as favorite athlete.

## ODLE'S KICKING STATISTICS

Year	G	PATs	Pct	1-19	20-29	30-39	40-49	50+	Fg-Fga	Pct	Pts	Long
1985	10	31-36	.861	0-0	1-1	0-2	3-4	0-0	4- 7	.571	43	44
1986	10	23-26	.884	0-0	2-4	0-4	0-2	0-0	2-10	.200	32	24
1987	10	5-9	.560	0-0	1-1	2-3	0-0	0-0	3- 4	.750	17	36
<b>TOTAL</b>	<b>30</b>	<b>59-71</b>	<b>.831</b>	<b>0-0</b>	<b>4-6</b>	<b>2-9</b>	<b>3-6</b>	<b>0-0</b>	<b>9-21</b>	<b>.429</b>	<b>92</b>	<b>44</b>

## Mike Shoff



OG 6-3 265 Senior Maywood, NE

**CAREER:** Mike was a vital cog in the offensive unit last season as a starter in all 10 games at right guard. Is not likely to loose his job this fall. Helped the '87 squad lead the conference in passing with 206.1 yards a game. Was sidelined by a knee injury in the fall of '86 and did not play. He has also attended the University of Nebraska, Kearney State College and North Platte Junior College. Was a football, track and wrestling letterman as a prep athlete at Southeast High School in Lincoln, NE. Was an all-conference, all-state and honorable mention all-America pick as a high school football player. He also placed in state of Nebraska wrestling and shot put competition.

Was a National Honor Society honoree as a senior. **PERSONAL:** Born February 6, 1963 . . . is an art education and mathematics major . . . son of Lewis and Connie Shoff . . . lists Eric Dickerson as favorite professional athlete.

## Kevin Simien



SB 6-2 200 Junior Port Arthur, TX

**CAREER:** Kevin came to FHSU last spring after playing at Oklahoma State University. Is projected as a starter at the slotback position vacated by former Tiger All-American Eric Busenbark. Was impressive in spring practice with his ability to catch and run with the football. Did not have a great outing in the Craig Horchem Alumni game, but did have one reception for a yard and ran three times for 25 yards including a 17-yard gain. May remind some people of Frankie Neal who now plays for the Green Bay Packers in the NFL. Has the same size and speed as Neal. **PERSONAL:** Born August 28, 1966 . . . is a business management major . . . son of

Mary Lavena Jackson.

## Jeff Sinegal



RB 5-11 198 Junior Duson, LA

**CAREER:** Jeff is a transfer from Southern University in Baton Rouge, LA. Will battle returnee David Lemons for time at running back this fall. Is a power runner who is at his best going straight up the field. Ran for 23 yards on eight carries in the Craig Horchem Alumni Game at the close of spring practice. He also attended Southeastern Louisiana University in Hammond, LA. Was a football and track letterman at Acadiana High School in Lafayette, LA. **PERSONAL:** Born July 9, 1966 . . . is a business management major . . . son of Emory and Geraldine Sinegal . . . lists Michael Jordan as favorite athlete.

## Brian Stindt



LB 6-1 210 Sophomore Belleville, KS

**CAREER:** Brian came on early last fall to win a starting berth and contribute to the defensive unit. Started seven games and played in all 10 contests. Finished as the Tigers' fourth best tackler with 53 (28 unassisted) total stops. Will begin fall practice as the starter at one linebacker position. Was FHSU's top tackler in the '87 opener against Lincoln with eight stops. Had his career best of 10 tackles against Kearney State. Was a redshirt in 1986 along with about 35 other freshmen and sophomores. Honored as an all-league and all-area linebacker while at Belleville High School. Earned letters in football, basketball and track as a prep athlete. **PERSONAL:** Born

March 28, 1968 . . . is undecided on a major . . . son of Owen and Ruth Ann Stindt . . . lists Karl Mecklenburg as favorite athlete.

## STINDT'S DEFENSIVE STATISTICS

Year	Games	UT	AT	TOT	Loss	FR	INT	PBR	Sacks
1987	10	28	25	53	0-0	0	0	1	0



## Dean Tenbrink

SE

5-11

170

Senior

Dodge City, KS

**CAREER:** Dean was a valuable receiver in FHSU's pass oriented offense in 1987 with a starting assignment in eight contests. He played in every game and rotated in on every other play at split end. Is slated to assume the same role this season for the Tigers. He caught 14 passes for 248 yards for an average of 17.7 per catch. Gathered in a game winning 33-yard touchdown pass from Craig Modellmog with :57 seconds remaining against Wayne State last season. His longest reception went for 45 yards against Emporia State. Returned five kicks for 71 yards, an average of 14.2 yards per return. He played two seasons in his hometown at Dodge City Community College before transferring to Fort Hays State in the spring of '87. Earned recognition as an Academic All-Region VI selection, Who's Who Among Junior College Students and was named to the President's Honor Roll while at Dodge City CC. Lettered three times as prep gridder at Dodge City High School, where he was honored as an honorable mention pick by the Western Athletic Conference and All-Southwest Kansas. Was named a Kansas Honor Scholar and served as vice-president of the National Honor Society while in high school. **PERSONAL:** Born August 25, 1966 . . . is a finance major . . . son of Larry and Mary Tenbrink . . . lists Steve Largent as favorite athlete.



### TENBRINK'S OFFENSIVE STATISTICS

Year	Games	Att	Yards	Avg	TD	Recp	Yards	Avg	TD
1987	10	0	0	0.0	0	14	248	17.7	1

## Tyrone Tracy

SB

5-11

176

Junior

Indianapolis, IN

**CAREER:** Tyrone has been an impact player both of his seasons as a Tiger. His accomplishments earned him honorable mention NAIA All-America recognition last season. He carried much of the offense on his shoulders in '87 as a receiver, running back, kickoff returner and punt returner. He led the FHSU squad in three out of four of those categories with the exception being rushing. He compiled 205.1 yards per game in all-purpose yardage. He paced the team in receiving with 51 catches for 873 yards, kickoff returns with 30 for 668 yards and punt returns with 15 for 224 yards. He was second in rushing with 286 yards on 82 carries. Tracy set or tied eight FHSU game, season and career records last season. His marks now stand for points scored in a game (30), points scored in a season (108), touchdowns in a game (5), touchdowns in a season (18), kickoff returns in a season (30), kickoff returns in a career (44), kickoff return yardage in a season (668), kickoff return yardage in a career (973). He was outstanding against Emporia State when he earned CSIC Player-of-the-Week honors. Against the Hornets, he scored five touchdowns on runs of two, 12 and one and catches of 53 and five. His totals were 46 yards rushing in 10 attempts and six receptions for 147 yards. He also returned one kickoff for 20 yards. Was named to the first team All-CSIC and All-District 10 teams. Had a fine freshman season as FHSU's fifth ranked receiver with 22 catches for 256 yards. Was the leading kick returner with 14 returns for 305 yards, an average of 21.8 per return. He also had four punt returns for 23 yards. Was a football and basketball letterwinner at Ben Davis High School in Indianapolis. Honored as an all-county, all-metro and all-state (first team) pick as a senior in football. Was named his high school's offensive back-of-the-year. **PERSONAL:** Born July 18, 1968 . . . is undecided on major . . . son of Larry Tracy . . . lists Marcus Allen as favorite athlete.



### TRACY'S OFFENSIVE STATISTICS

Year	Games	Att	Yards	Avg	TD	Recp	Yards	Avg	TD
1986	9	9	37	4.1	0	22	256	11.6	0
1987	10	82	286	3.5	9	51	873	17.1	8
<b>TOTAL</b>	<b>19</b>	<b>91</b>	<b>323</b>	<b>3.5</b>	<b>9</b>	<b>73</b>	<b>1129</b>	<b>15.5</b>	<b>8</b>

## Dusty Trail

SS

5-11

185

Senior

Osborne, KS

**CAREER:** Dusty was one of the defensive secondary's stabilizing forces and returns this fall as a starter at strong safety. He started and played in nine games. The only game he missed was the season opener against Lincoln. Was the Tigers' top tackler in three games with a high of 11 stops (nine unassisted) against Kearney State. He ranked fifth on the squad in total tackles with 51 (42 unassisted). He was also the squads top player in interceptions with three. He was excellent in the run pursuit area with five tackles for loss (-13 yards). Was an honorable mention All-CSIC pick as a defensive back. He played for Hutchinson Community College two seasons and attended Kansas State in the fall of '86, but did not play football. Was named All-Jayhawk Junior College Conference while at Hutch Juco. Lettered in football, basketball and track at Osborne High School. Also played American Legion baseball four seasons. Honored as all-state, all-area and All-Mid-Continent







# Tiger Veteran Profiles

League griddier as a senior. Was selected to play in the Kansas Shrine Bowl. He was also an all-league basketball player as a senior. Was a member of the National Honor Society and served as senior class president. **PERSONAL:** Born March 19, 1966 . . . is a physical science major . . . son of Elmer and Sandra Trail . . . lists Karl Mecklenburg as favorite athlete.

TRAIL'S DEFENSIVE STATISTICS									
Year	Games	UT	AT	TOT	Loss	FR	INT	PBR	Sacks
1987	9	42	9	51	5-13	0	3	3	1

## Charles Tribble



NG 6-0 225 Senior Phoenix, AZ

**CAREER:** Charles earned two starts while playing in nine contests for FHSU in '87. Is among three returnees who will battle for playing time at nose guard. Collected 28 tackles (20 unassisted) which included six for -16 yards in losses. Also had one quarterback sack to his credit last season. He played two seasons at Phoenix College before joining the FHSU squad for fall practice in '87. Graduated from Riverside Poly High School in Riverside, CA. He was a two-time letterwinner in football as a prep. Honored as an all-league and defensive player-of-the-week while at Riverside Poly.

**PERSONAL:** Born April 21, 1967 . . . is a finance major . . . son of Charles Tribble and Lillian Steward . . . lists William Perry as favorite athlete.

TRIBBLE'S DEFENSIVE STATISTICS									
Year	Games	UT	AT	TOT	Loss	FR	INT	PBR	Sacks
1987	9	20	8	28	6-16	0	0	0	1

## Rod Vera



NG 6-0 235 Senior Manhattan, KS

**CAREER:** Rod had the inside track on a starting position at nose guard heading into fall practice. Played defensive tackle in nine games for FHSU last season all as a starter. Compiled 22 tackles (11 unassisted) and two for -10 yards in losses. His best statistical outings were a pair of five tackle performances against Missouri Southern and Pittsburg State. Played two seasons at Coffeyville Community College with FHSU defensive coordinator Duane Dirk. Also attended Missouri Southern in the spring of '87 before transferring to Fort Hays State. Was a standout prep player at Manhattan High School. **PERSONAL:** Born September 18, 1966 . . . is a marketing

major . . . son of Mr. and Mrs. Joe Vera.

VERA'S DEFENSIVE STATISTICS									
Year	Games	UT	AT	TOT	Loss	FR	INT	PBR	Sacks
1987	9	11	11	22	2-10	1	0	0	0

## Greg Yost



DT 6-2 240 Sophomore Gorham, KS

**CAREER:** Greg will vie for a starting job at defensive tackle again this season after starting in all 10 games of '87. Was among the Tigers' best pass rushers with three quarterback sacks and 13 tackles for loss (-58). He ranked eighth overall in tackles with 45 (29 unassisted). His best performance was a seven tackle outing which included three tackles for eight yards in losses against Washburn in the season finale. Was not a member of the squad in the fall of '86, but was attending classes at FHSU. First tried out for the team in spring practice of '87. Was a four-time letterman in football, basketball and track at Gorham High School. As a senior, was named to all-

area squad in football and schools most valuable athlete. His father played one year of football at Fort Hays State. **PERSONAL:** Born October 15, 1965 . . . is a physical education major . . . son of Richard and Carolyn Yost.

YOST'S DEFENSIVE STATISTICS									
Year	Games	UT	AT	TOT	Loss	FR	INT	PBR	Sacks
1987	10	29	16	45	13-58	1	0	0	3



# Tiger Squad Members

## David Braun

OL 6-3 205 So St. Cloud, FL  
David was a reserve offensive lineman in 1987 and will likely see more action this fall. Was a redshirt during the '86 season. Lettered in football, track, wrestling and weightlifting at St. Cloud High School.

## Chris Capettini

DE 6-2 220 Fr Golden, CO  
Chris is slated to see action at defensive end, but could be moved to another position where he would fill a void. Was a redshirt last season after a stellar career at Wheat Ridge High School in Golden, CO.

## Kenneth Dean

CB 5-10 185 Jr Kansas City, KS  
Kenneth is a transfer from Central Missouri State University. Had a good spring with the Tigers, yet will find it hard to crack the starting lineup in the secondary. Played his prep football at Schlagle High School in Kansas City.

## Rich Gaffen

DL 6-3 260 Sr Concord, CA  
Rich may press for a starting job at defensive tackle after a good spring showing. Transferred to FHSU from Sacramento State University and also played at the College of Sequoia two seasons. Lettered three seasons in football at Ygnacio Valley High School.

## Rob Gruendell

DB 5-9 163 Fr Littleton, CO  
Rob was impressive in spring ball and is expected to play at cornerback or his outstanding speed may warrant a move to a receiver position. Was in a group of redshirt freshmen last fall. Excelled as a prep gridder at Alameda High School.

## Doug Peters

OT 6-5 245 Sr Little River, KS  
Doug saw limited action in '87, but may be called on to fill the big hole at tackle. Came to FHSU after two seasons at Hutchinson Community College. Was a three-time football and two-time track letterman at Little River High School.

## Tom Satterly

OT 6-3 220 Fr Burlington, CO  
Tom is another candidate at offensive tackle, but has little game experience at the college level after a redshirt season as a freshman. Was a standout football player on both offense and defense at Burlington High School.

## Kelly Sandell

LB 6-1 202 Jr Caldwell, KS  
Kelly is expected to see playing time at linebacker and may win a starting spot with a good fall showing. Attended Oklahoma State out of high school and played football at Hutchinson Community College before coming to FHSU. Is a graduate of Caldwell High School.

## Delbert Trowell

LB 6-0 205 Sr Momence, IL  
Delbert played in seven games with two starting assignments in '87. Is expected to play a similar role on this year's squad. He made 24 tackles (10 unassisted) as a junior. Became a Tiger after playing at Eastern Utah Junior College. Lettered in football and track at Momence High School.

## Chris Warren

DB 6-0 148 Fr Denver, CO  
Chris made great strides of learning the Tiger defense in the spring. He enters the fall as the backup free safety. Was a redshirt player last fall. Earned letters in football, track and wrestling at Montbello High School.

## Kevin Weber

NG 5-10 205 So Ellis, KS  
Kevin saw action in several games in '87, mostly on special teams. Had four tackles in limited playing time. Is expected to battle for job at nose guard. Walked on the FHSU squad in the spring of '86. Earned all-Mid Continent recognition as a senior. Also lettered in wrestling and track at Ellis High School.





## Western State



Coach Iverson

September 3, 1988

1:00 p.m. (MDT)

Mountaineer Bowl (2,481)

Gunnison, Colorado

Location . . . . . Gunnison, CO  
 President . . . . . Dr. William T. Hamilton  
 Athletic Director . . . . . Kenneth MacLennan  
 Sports Information Director . . . . . J.W. Campbell  
 SID Phones: Office . . . . . 303-943-3035  
                   Home . . . . . 303-641-1274  
 Enrollment . . . . . 2,700  
 Colors . . . . . Crimson and Slate  
 Conference . . . . . Rocky Mountain Intercollegiate  
 1987 Record . . . . . 2-8-0  
 Conference Record (Standing) . . . . . 1-5-0  
 Series Record . . . . . First meeting  
 Last Meeting . . . . . First meeting  
 Head Coach . . . . . Dr. Carl "Duke" Iverson  
     Record at WSC . . . . . First year  
     Career record (years) . . . . . 46-15-4 (six)  
     Record vs. FHSU . . . . . 0-0-0  
 Assistant Coaches . . . . . Casey Coons, Robert  
                                     "Rusty" Whitcomb, Jim Jacoby  
                                     Wayne McGinn  
 Primary Offense . . . . . Pro  
 Primary Defense . . . . . 5-2  
 Lettermen Returning (Lost) . . . . . 39 (11)  
 Starters Returning (Lost) . . . . . 17 (8)  
 Key Losses . . . . . WR/R-Fred Gayles, OL-Mark Verna  
 Returning Starters . . . . . FB-Damon Lockhart  
                                     DL-Rob Meehan, TE-Eric Blanke, LB-Pat Stewart,  
                                     LB-John DePriest, OL-Rick Desch  
 Top Newcomers . . . . . RB-Cory Davis, QB-Greg  
                                     Whisler, LB-Martin Maslonka

### 1988 Western State Schedule

Sept. 3	FORT HAYS STATE	1:00 p.m.
Sept. 10	at Emporia State	8:30 p.m.
Sept. 17	at Ft. Lewis (CO)	1:00 p.m.
Sept. 24	at Colo. School of Mines	1:00 p.m.
Oct. 1	Open	
Oct. 8	at Mesa (CO)	7:30 p.m.
Oct. 15	COLO. SCH. OF MINES	1:00 p.m.
Oct. 22	at Adams State (CO)	1:00 p.m.
Oct. 29	FT. LEWIS (CO)	1:00 p.m.
Nov. 5	W. NEW MEXICO	1:00 p.m.

All Times Mountain

### 1987 Mountaineer Results (2-8-0)

at Weber State (UT)	10-40	L
at Southern Utah State	10-41	L
EMPORIA STATE	30-35	L
COLO. SCHOOL OF MINES	24-17	W
MESA (CO)	8-42	W
at New Mexico Highlands	31-45	L
ADAMS STATE (CO)	20-30	L
at Ft. Lewis (CO)	12-33	L
at Western New Mexico	19-27	L
at Panhandle State (OK)	20-15	W



## Northwestern Oklahoma State



Coach Brower

September 10, 1988

7:00 p.m.

Lewis Field (7,000)

Hays, Kansas

Location . . . . . Alva, OK  
 President . . . . . Dr. Joe J. Struckle  
 Athletic Director . . . . . Randy Smith  
 Sports Information Director . . . . . Terry Winn  
 SID Phones: Office . . . . . 405-327-1700  
                   ext. 242 or 291  
                   Home . . . . . 405-327-1286  
 Enrollment . . . . . 1,800  
 Colors . . . . . Red and Black  
 Conference . . . . . Oklahoma Intercollegiate  
 1987 Record . . . . . 7-4-0  
 Conference Record (Standing) . . . . . 2-2 (3rd)  
 Series Record . . . . . NWOSU leads 12-5-2  
 Last Meeting . . . . . NWOSU 26, FHSU 12 (9-12-87)  
 Head Coach . . . . . Lee Brower  
     (SW Oklahoma '65)  
     Record at NWOSU . . . . . 18-13-0  
     Career record (years) . . . . . 18-13-0  
     Record vs. FHSU . . . . . 2-0  
 Assistant Coaches . . . . . Steve Lohmann, Steve  
                                     Gale, Frank Johnson, Jr.  
 Primary Offense . . . . . Multiple I  
 Primary Defense . . . . . Multiple 50  
 Lettermen Returning (Lost) . . . . . 29 (NA)  
 Starters Returning (Lost) . . . . . 9 (13)  
 Key Losses . . . . . QB-Troy Chestnut, DE-Jay Jones  
                                     P/PK-Jody Bratcher  
 Returning Starters . . . . . SE-Tim Albin, CB-Steve  
                                     Cooks, DT-Steve Byford, NG-Doug Van Meter, LB-Jeff  
                                     Myers, DT-Russell Locke FS-Jay Smith  
 Top Newcomers . . . . . QB-Nick Reyes, LB-Norman  
                                     Slusher, OL-Andy Chaparossa

### 1988 Northwestern Oklahoma Schedule

Sept. 10	at Fort Hays State	7:00 p.m.
Sept. 17	N. MEXICO HIGH	7:30 p.m.
Sept. 24	ARKANSAS TECH	7:30 p.m.
Oct. 1	at Harding (AR)	7:00 p.m.
Oct. 8	at Langston (OK)	2:00 p.m.
Oct. 15	PANHANDLE (OK)	4:00 p.m.
Oct. 22	EAST CENTRAL (OK)	2:00 p.m.
Oct. 29	at S.E. Oklahoma	2:00 p.m.
Nov. 5	N.E. OKLAHOMA	2:00 p.m.
Nov. 12	at S.W. Oklahoma	2:00 p.m.

All Times Central

### 1987 Ranger Results (7-4-0)

FORT HAYS STATE	26-12	W
at New Mexico Highlands	14-24	L
at Arkansas Tech	30-7	W
ADAMS STATE (CO)	43-0	W
LANGSTON (OK)	41-7	W
at Panhandle State (OK)	17-3	W
at East Central State (OK)	20-47	L
S.E. OKLAHOMA	24-20	W
at Northeastern Oklahoma	3-22	L
S.W. OKLAHOMA	21-7	W
at Central Arkansas	7-31	L



## Cameron



### Coach Naber

September 17, 1988

7:00 p.m.

**Lewis Field (7,000)**

Hays, Kansas

Location	Lawton, OK
President	Dr. Don Davis
Athletic Director	Bill Carter
Sports Information Director	Herb Jacobs
SID Phones: Office	405-581-2300 or 405-353-0620
Enrollment	6,000
Colors	Old Gold and Black
Conference	Lone Star
1987 Record	11-2-0
Conference Record (Standing)	NA
Series Record	CU leads 1-0-0
Head Coach	Brian Naber [Concordia (NE)]
Record at CU	30-16-1
Career record	46-30-1
Record vs. FHSU	1-0-0
Assistant Coaches	Frank Crosson, Greg Lees Dan Scheible, Rickey Watts
Primary Offense	Houston Veer
Primary Defense	5-2
Lettermen Returning (Lost)	38 (16)
Starters Returning (Lost)	14 (9)
Key Losses	C-Greg Langer, RB-Chuck Smith WR-Jake Brownlow, WR-Ronald Walters, OG-Wes Cox, OT-Mike Lorenzen, DE-Pat Hartline DT-Thomas O'Kelley
Returning Starters	QB-Roosevelt Gamble, LT- Chas Stover, LG-Phillip Briney, RB-Robert Whitman, DT- Chris Crosley, LB-Bryan Callihan, ES-John Tension, FS-Charles Miles Thompson, LB-Joe Watkins, FB-Sherrie Washington, CB-Bobby Ellis, CB-Trevor Johnson
Top Newcomers	Ranny Meservy, Mike McCarthy, Bill McCoy, Stoney Mathis, Gary Palmer Jim Bartee, Paul Jones, Pete Pruitt

### 1988 Cameron Schedule

Sept.	10	at Cal Poly-San Luis O.	9:00 p.m.
Sept.	17	at Fort Hays State	7:00 p.m.
Sept.	24	Open	
Oct.	1	at Texas A&I	7:30 p.m.
Oct.	8	WEST TEXAS STATE	7:30 p.m.
Oct.	15	at Eastern New Mexico	8:30 p.m.
Oct.	22	ABILENE CHR.(TX)	7:30 p.m.
Oct.	29	at Angelo State (TX)	2:00 p.m.
Nov.	5	at Central State (OK)	1:30 p.m.
Nov.	12	EAST TEXAS STATE	2:00 p.m.

### 1987 Aggie Results (11-2-0)

at Southeastern Oklahoma	13- 0	W
HENDERSON STATE (AR)	32-13	W
FORT HAYS STATE	37-12	W
at Abilene Christian	18- 3	W
CENTRAL STATE (OK)	31-13	W
at Elon College (NC)	20-21	L
at Langston (OK)	69- 0	W
at Texas A&I	20-31	L
at Texas Lutheran	28-10	W
*EMPORIA STATE	17-12	W
*CENTRAL ARKANSAS	14- 7	W
*at Pittsburg State	20-10	W
*CARSON-NEWMAN (TN)	30- 2	W

\* denotes NAIA playoff contest



## Kearney State



### Coach Boroff

September 24, 1988

2:00 p.m.

**Foster Field (6,500)**

### Kearney, Nebraska

Location	Kearney, NE
President	Dr. William R. Nester
Athletic Director	Dick Beechner
Sports Information Director	Don Briggs
SID Phones: Office	308-234-8337
Home	308-237-7113
Enrollment	9,375
Colors	Royal Blue and Old Gold
Conference	Central States Intercollegiate
1987 Record	5-4-0
Conference Record (Standing)	5-2-0 (T-2nd)
Series Record	KSC leads 23-16-1
Last Meeting	KSC 44, FHSU 7 (9-26-87)
Head Coach	Claire Boroff
Record at KSC	103-48-3
Career record	103-48-3
Record vs. FHSU	11-3-1
Assistant Coaches	Terry Renner, Russ Martin Tom Sneckenberg, Darrell Morris, Scott Hoffman, Rick Glidewell, Bob Majeski Garth Flaming
Primary Offense	I
Primary Defense	4-3
Lettermen Returning (Lost)	38 (22)
Starters Returning (Lost)	12 (10)
Key Losses	OL-Tom Bartusiak, DB-Jeff Norblade, RB-Kevin Trospier, DL-Mitch Stoltenberg, C-Craig Boroff, QB-Mark Voss
Returning Starters	LB-Todd Suey, DB-Kevin Lyons C-Bryan Casper, TE-Paul Reilly FB-Scott Chochon, DE-Todd Grantski
Top Newcomers	Not Available

## 1988 Kearney State Schedule

Sept. 3	NORTHERN ST. (SD)	7:00 p.m.
Sept. 10	at Nebraska-Omaha	1:30 p.m.
Sept. 17	at Morehead St. (MN)	1:30 p.m.
Sept. 24	FORT HAYS STATE*	2:00 p.m.
Oct. 1	at Pittsburg State*	7:30 p.m.
Oct. 8	WASHBURN*	1:30 p.m.
Oct. 15	MO. SOUTHERN*	1:30 p.m.
Oct. 22	at Emporia State*	2:00 p.m.
Oct. 29	MO. WESTERN*	1:30 p.m.
Nov. 5	at Wayne State*	1:30 p.m.
Nov. 12	MINN.-MORRIS*	1:30 p.m.

### 1987 Antelope Results (5-4-0)

NEBRASKA-OMAHA	0-14	L
MOORHEAD STATE (MN)	6-16	L
at Fort Hays State*	44-7	W
PITTSBURG STATE*	10-31	L
MESA (CO)	8-42	W
*at Washburn*	0-28	W
at Missouri Southern*	10-9	W
EMPORIA STATE*	16-17	L
at Missouri Western*	37-0	W
WAYNE STATE*	17-7	W

\* denotes CSIC games

- denotes Washburn forfeit





# Missouri Southern



# Wayne State



Coach Wade

October 1, 1988  
2:00 p.m.  
Lewis Field (7,000)  
Hays, Kansas

Location . . . . . Joplin, MO  
President . . . . . Dr. Julio S. Leon  
Athletic Director . . . . . Jim Frazier  
Sports Information Director . . . . . Dennis Slusher  
SID Phones: Office . . . . . 417-625-9359  
Home . . . . . 417-781-8319  
Enrollment . . . . . 5,100  
Colors . . . . . Green and Gold  
Conference . . . . . Central States Intercollegiate  
1987 Record . . . . . 3-7-0  
Conference Record (Standing) . . . . . 3-4-0 (5th)  
Series Record . . . . . MSSC leads 9-8-1  
Last Meeting . . . . . MSSC 38, FHSU 13 (10-3-87)  
Head Coach . . . . . Charley Wade  
Record at MSSC . . . . . 0-0-0  
Career record . . . . . 0-0-0  
Record vs. FHSU . . . . . 0-0-0  
Assistant Coaches . . . . . Al Cade, Bill Cooke  
Tom Rutledge  
Primary Offense . . . . . Double Slot  
Primary Defense . . . . . 50  
Lettermen Returning (Lost) . . . . . 28 (21)  
Starters Returning (Lost) . . . . . 11 (11)  
Key Losses . . . . . FS-Danny Massey, LB-Don Stone  
C-Dan Porter, CB-Rodney Shepherd, DE-Randy Darby,  
DE-Lloyd Vaughn, PK-David Thaman  
Returning Starters . . . . . FB-Bill Wofford, RB-James  
Calloway, RB-Eric Wilson, WR-Donald Hurd  
OT-Mike Wicker, OT-Jim Probst, OG-David Gossett  
DT-Mike King, DT-Kevin Durbin  
LB-Greg Stonebarger, CB-Matt Elledge  
Top Newcomers . . . . . DT-Howard Carter LB-Wade Jackson



Coach Chapman

October 8, 1988  
2:00 p.m.  
Memorial Stadium (3,500)  
Wayne, Nebraska

Location . . . . . Wayne, NE  
President . . . . . Dr. Donald Mash  
Athletic Director . . . . . Pete Chapman  
Sports Information Director . . . . . Jean Berger  
SID Phones: Office . . . . . 402-375-2200, x326  
Home . . . . . 402-375-5289  
Enrollment . . . . . 2,820  
Colors . . . . . Black and Gold  
Conference . . . . . Central States Intercollegiate  
1987 Record . . . . . 2-7-1  
Conference Record (Standing) . . . . . 2-4-1 (5th)  
Series Record . . . . . Tied at 5-5-1  
Last Meeting . . . . . FHSU 29, WSC 24 (10-10-87)  
Head Coach . . . . . Pete Chapman  
Record at WSC . . . . . 17-34-1  
Career record . . . . . 29-42-1  
Record vs. FHSU . . . . . 1-4-0  
Assistant Coaches . . . . . Dennis Danielson  
Chuck McGinnis, Shann McKeever  
Lyndon Wieseman  
Primary Offense . . . . . Pro  
Primary Defense . . . . . 5-2  
Lettermen Returning (Lost) . . . . . 29 (12)  
Starters Returning (Lost) . . . . . 16 (6)  
Key Losses . . . . . OL-Mike Anderson, OL-Ben Lehr  
NG-Dave Uhlers, LB-Scott Wightman, LB-Greg Cavill  
Returning Starters . . . . . RB-Damon Ross, FB-Brian  
Jepsen, QB-Scott Raue, TE-John Pedritz, WR-Pat  
Wordekemper, WR-Darryl Mountain, C-Harry Gardner,  
OL-Mark Linder, OL-Jeff Wagner, DL-Randy Rouse, LB-  
Jim Sibbel, LB-Tony Wiese, DB-Glen Sutton, LB-Bud  
Sachs, SS-Mark Wolf, LB-David Gerkin  
Top Newcomers . . . . . QB-Kirk Meyer, DB-Cordell  
Gregory, LB-Wade Maxwell, OL-Tony Payne

## 1988 Missouri Southern Schedule

Sept. 3	at N.E. Oklahoma	7:00 p.m.
Sept. 10	at Southwest Missouri	7:00 p.m.
Sept. 17	at Arkansas Tech	7:00 p.m.
Sept. 24	PITTSBURG STATE*	7:00 p.m.
Oct. 1	at Fort Hays State*	2:00 p.m.
Oct. 8	EMPORIA STATE*	7:00 p.m.
Oct. 15	at Kearney State*	1:30 p.m.
Oct. 22	WASHBURN*	2:30 p.m.
Oct. 29	WAYNE STATE*	1:30 p.m.
Nov. 5	at Missouri Western*	1:30 p.m.

All Times Central

## 1987 Lions Results (3-7-0)

N.E. OKLAHOMA	20-21	L
at Southwestern Oklahoma	7-9	L
ARKANSAS TECH	16-17	L
at Pittsburg State*	6-34	L
FORT HAYS STATE*	38-13	W
at Emporia State*	7-26	L
KEARNEY STATE*	9-10	L
at Washburn*	32-14	W
at Wayne State*	10-12	L
MISSOURI WESTERN*	41-7	W

\* denotes CSIC games

## 1988 Wayne State Schedule

Sept. 3	at Nebraska-Omaha	7:30 p.m.
Sept. 10	ST. CLOUD (MN)	1:30 p.m.
Sept. 17	BAKER UNIVERSITY	1:30 p.m.
Sept. 24	at Missouri Western*	7:00 p.m.
Oct. 1	at Emporia State*	2:00 p.m.
Oct. 8	FORT HAYS STATE*	1:30 p.m.
Oct. 15	at Washburn*	2:00 p.m.
Oct. 22	PITTSBURG STATE*	1:30 p.m.
Oct. 29	at Missouri Southern*	1:30 p.m.
Nov. 5	KEARNEY STATE*	1:30 p.m.
Nov. 12	at Univ. of North. Iowa	7:00 p.m.

All Times Central

## 1987 Wildcat Results (2-7-1)

at Nebraska-Omaha	0-49	L
at Augustana (SD)	14-27	L
SOUTHWEST STATE (MN)	14-55	L
MISSOURI WESTERN*	10-10	T
EMPORIA STATE*	12-21	L
at Fort Hays State*	24-29	L
WASHBURN*	25-29	W
at Pittsburg State*	6-76	L
MISSOURI SOUTHERN*	12-10	W
at Kearney State*	7-17	L

\* denotes CSIC games

• denotes Washburn forfeit



# Pittsburg State



# Missouri Western



Coach Franchione

October 15, 1988  
2:00 p.m.  
Carnie Smith Stadium (5,600)  
Pittsburg, Kansas

Location ..... Pittsburg, KS  
President ..... Dr. Donald Wilson  
Athletic Director ..... Dennis Franchione  
Sports Information Director ..... Todd Hilder  
SID Phones: Office ..... 316-231-7000, x4125  
Home ..... 316-231-9572  
Enrollment ..... 5,500  
Colors ..... Crimson and Gold  
Conference ..... Central States Intercollegiate  
1987 Record ..... 11-1-0  
Conference Record (Standing) ..... 7-0-0 (1st)  
Series Record ..... PSU leads 35-17-8  
Last Meeting ..... PSU 62, FHSU 13 (10-17-87)  
Head Coach ..... Dennis Franchione  
Record at PSU ..... 30-40-0  
Career record ..... 44-8-2  
Record vs. FHSU ..... 3-0-0  
Assistant Coaches ..... Chuck Broyles  
Gary Patterson, Chuck Moller  
Primary Offense ..... Veer  
Primary Defense ..... 4-3  
Lettermen Returning (Lost) ..... 32 (12)  
Starters Returning (Lost) ..... 13 (8)  
Key Losses ..... RB-Monte Weathers, DE-Troy Adams  
QB-Gene Stegeman, LB-Kurt Thompson, DB-Brian  
Simonec, PK-Mike Bowman, OL-Jon Beal  
Returning Starters ..... TE-Blaise Bauer, OL-Jesse Wall  
OL-Rick Tyson, DL-Brett Potts, DB-Donnie Johnson  
OL-Dale Fuchs, WR-Steve Ginavan, DL-Wayne Kennedy  
LB-John Roderique  
Top Newcomers ..... Not Available

## 1988 Pittsburg State Schedule

Sept. 10	LINCOLN (MO)	7:30 p.m.
Sept. 17	at Missouri-Rolla	1:30 p.m.
Sept. 24	at Missouri Southern*	7:00 p.m.
Oct. 1	KEARNEY STATE*	7:30 p.m.
Oct. 8	at Missouri Western*	7:00 p.m.
Oct. 15	FORT HAYS STATE*	2:00 p.m.
Oct. 22	at Wayne State*	1:30 p.m.
Oct. 29	at Washburn*	2:00 p.m.
Nov. 5	EMPORIA STATE*	1:30 p.m.

All Times Central

## 1987 Gorilla Results (11-1-0)

at Lincoln (MO)	69-7 W
MISSOURI-ROLLA	31-7 W
MISSOURI SOUTHERN*	34-6 W
at Kearney State*	31-10 W
MISSOURI WESTERN*	52-9 W
at Fort Hays State*	62-13 W
WAYNE STATE*	76-6 W
WASHBURN*	44-0 W
at Emporia State*	35-9 W
*N.E. OKLAHOMA	57-0 W
*PRESBYTERIAN (SC)	42-21 W
*CAMERON (OK)	10-20 L

\* denotes CSIC games

• denotes NAIA playoff contest

October 22, 1988

1:30 p.m.

Lewis Field (7,000)  
Hays, Kansas



Coach Darnell

Location ..... St. Joseph, MO  
President ..... Dr. Janet Murphy  
Athletic Director ..... Ed Harris  
Sports Information Director ..... Paul Sweetgall  
SID Phones: Office ..... 816-271-4257  
Home ..... 816-364-6013  
Enrollment ..... 4,000  
Colors ..... Black and Gold  
Conference ..... Central States Intercollegiate  
1987 Record ..... 2-8-1  
Conference Record (Standing) ..... 1-5-1 (7th)  
Series Record ..... FHSU leads 8-3-1  
Last Meeting ..... FHSU 23, MSSC 17 (9-24-87)  
Head Coach ..... Dennis Darnell  
Record at MWSC ..... 5-16-1  
Career record ..... 5-16-1  
Record vs. FHSU ..... 0-2-0  
Assistant Coaches ..... Dave Hedrick, Chuck  
Carrender, Mike Buckler, Dale Pehrson  
Primary Offense ..... Split Backs  
Primary Defense ..... 50 Package  
Lettermen Returning (Lost) ..... 28 (12)  
Starters Returning (Lost) ..... 12 (10)  
Key Losses ..... P-Bryan Timmermeyer, WR-Eric  
Hoskins, RB-Pat Eckhardt, SS-Brian Casey  
Returning Starters ..... QB-Rob Vanderlinden  
WR-Gerald Chiles, C-Jeff Fisher, OG-Heath Greg  
OG-Keith McVey, OT-Chris Wright, NG-Eric Kiser  
DT-Jon Kruse, DE-Jarrod Strickbine, DT-Mark Tolliver  
CB-Leland Williams, CB-Dee Brownlee  
Top Newcomers ..... TE-Chris Kanelakos FB-Steve Sullivan

## 1988 Missouri Western Schedule

Sept. 3	at Missouri-Rolla	1:30 p.m.
Sept. 10	BENEDICTINE	7:00 p.m.
Sept. 17	at N.W. Missouri	1:30 p.m.
Sept. 24	WAYNE STATE*	7:00 p.m.
Oct. 1	at Washburn*	7:00 p.m.
Oct. 8	PITTSBURG STATE*	7:00 p.m.
Oct. 15	EMPORIA STATE*	1:30 p.m.
Oct. 22	at Fort Hays State*	1:30 p.m.
Oct. 29	at Kearney State*	1:30 p.m.
Nov. 5	MO. SOUTHERN*	1:30 p.m.
Nov. 12	CENTRAL MISSOURI	1:30 p.m.

All Times Central

## 1987 Griffon Results (2-8-1)

MISSOURI-ROLLA	7-19 L
BENEDICTINE	41-33 W
N.W. MISSOURI	17-20 L
at Wayne State*	10-10 T
*WASHBURN*	6-31 W
at Pittsburg State*	9-52 L
at Emporia State*	6-22 L
FORT HAYS STATE*	17-23 L
KEARNEY STATE*	0-37 L
at Missouri Southern*	7-41 L
at Central Missouri	21-28 L

\* denotes CSIC games

• denotes forfeit by Washburn





# Emporia State



# Washburn



Coach Kramer

October 29, 1988  
1:30 p.m.  
Welch Stadium (7,000)  
Emporia, Kansas

Location ..... Emporia, KS  
President ..... Dr. Robert Glennen  
Athletic Director ..... Dr. Bill Quayle  
Sports Information Director ..... Dick Nibarger  
SID Phones: Office ..... 316-343-1200, x5354  
Home ..... 316-343-6495  
Enrollment ..... 5,400  
Colors ..... Black and Gold  
Conference ..... Central States Intercollegiate  
1987 Record ..... 8-3-0  
Conference Record (Standing) ..... 5-2-0 (T-2nd)  
Series Record ..... ESU leads 34-26-2  
Last Meeting ..... FHSU 40, ESU 20 (10-31-87)  
Head Coach ..... Larry Kramer  
(Nebraska '65)  
Record at ESU ..... 27-24-0  
Career record ..... 90-84-8  
Record vs. FHSU ..... 2-3-0  
Assistant Coaches ..... Rueben Rice  
Paul Vosburgh, Carl Clapp  
Primary Offense ..... I  
Primary Defense ..... 50  
Lettermen Returning (Lost) ..... 25 (NA)  
Starters Returning (Lost) ..... 13 (9)  
Key Losses ..... SB-Darren Johnson, QB-  
Preston Pearson, DB-Tarodney Robertson  
Returning Starters ..... DB-Kevin Strotkamp  
TB-Aubrey Dunlap, WR-Terry White, LB-Michael  
Phillips, OL-Clifford Hodrick, DL-Mark Buckner  
Top Newcomers ..... Not Available



Coach Elliot

November 5, 1988  
2:00 p.m.  
Lewis Field (7,000)  
Hays, Kansas

Location ..... Topeka, KS  
President ..... John Duggan  
Athletic Director ..... Jerry Robertson  
Sports Information Director ..... Kip Helt  
SID Phones: Office ..... 913-295-6334  
Home ..... 913-266-2036  
Enrollment ..... 6,210  
Colors ..... Blue, White and Gold  
Conference ..... Central States Intercollegiate  
1987 Record ..... 0-11-0\*  
Conference Record (Standing) ..... 0-11-0 (8th)\*  
Series Record ..... WU leads 32-18-3\*  
Last Meeting ..... WU 49, FHSU 12 (10-25-86)\*  
Head Coach ..... Larry Elliot  
Record at WU ..... 44-45-1  
Career record ..... 44-45-1  
Record vs. FHSU ..... 6-3-0  
Assistant Coaches ..... Bill Danenhauer, Dennis  
Caryl, Charlie Dieker, Steve Walter  
Primary Offense ..... Pro Set  
Primary Defense ..... 3-Flex  
Lettermen Returning (Lost) ..... 20 (20)  
Starters Returning (Lost) ..... 14 (9)  
Key Losses ..... QB-Kyle Kingston, DE-Jim Butler  
OLB-Troy Stedman, ILB-Shawn Rose, OT-Mike Gibson,  
TE-Chris Bleu, RB-Johnny Perkins, P-Tim Beasley  
Returning Starters ..... WR-Troy Slusser, OG-Gene  
Cullinane, DE-Charlie Bennett, DB-Anthony Bryan  
DE-Stewart Ensign, RB-Les Williams  
Top Newcomers ..... RB-Michael Carrier, DT-Troy Drenth, QB-  
Mark Johnson, OT-Shawn Rigby, OLB-Howard Holbrooks  
\* denotes Washburn's forfeit of six games last season due to the  
use of an ineligible player.

## 1988 Emporia State Schedule

Sept. 10	WESTERN ST. (CO)	7:30 p.m.
Sept. 17	at Northeast Missouri	7:30 p.m.
Sept. 24	at Chico State (CA)	9:30 p.m.
Oct. 1	WAYNE STATE*	2:00 p.m.
Oct. 8	at Missouri Southern*	7:00 p.m.
Oct. 15	at Missouri Western*	1:30 p.m.
Oct. 22	KEARNEY STATE*	2:00 p.m.
Oct. 29	FORT HAYS STATE*	1:30 p.m.
Nov. 5	at Pittsburg State*	1:30 p.m.
Nov. 12	at Washburn*	1:30 p.m.

All Times Central

## 1987 Hornet Results (8-3-0)

SOUTHWESTERN	36-3 W
at Western State (CO)	35-30 W
BAKER	19-17 W
at Wayne State*	21-12 W
MISSOURI SOUTHERN*	26-7 W
MISSOURI WESTERN*	22-6 W
at Kearney State*	17-16 W
at Fort Hays State*	20-40 L
PITTSBURG STATE*	9-35 L
• WASHBURN*	21-28 W
† at Cameron (OK)	12-17 L

\* denotes CSIC games  
• denotes forfeit by Washburn  
† denotes NAIA playoff contest

## 1988 Washburn Schedule

Sept. 10	N.W. MISSOURI	7:00 p.m.
Sept. 17	at Central Missouri	1:30 p.m.
Sept. 24	at N.E. Oklahoma	7:00 p.m.
Oct. 1	MO. WESTERN*	7:00 p.m.
Oct. 8	at Kearney State*	1:30 p.m.
Oct. 15	WAYNE STATE*	2:00 p.m.
Oct. 22	at Missouri Southern*	1:30 p.m.
Oct. 29	PITTSBURG STATE*	2:00 p.m.
Nov. 5	at Fort Hays State*	1:30 p.m.
Nov. 12	EMPORIA STATE*	1:30 p.m.

All Times Central

## 1987 Ichabod Results (0-11-0)

at Univ. of South Dakota	7-17 L
at Northwest Missouri	27-29 L
CENTRAL MISSOURI	17-26 L
• N.E. OKLAHOMA	23-21 L
• at Missouri Western*	31-6 L
• KEARNEY STATE*	28-0 L
• at Wayne State*	29-25 L
MISSOURI SOUTHERN*	14-32 L
at Pittsburg State*	0-44 L
• FORT HAYS STATE*	49-12 L
• at Emporia State*	28-21 L

\* denotes CSIC games  
• denotes Washburn forfeits



# All-Time Scores With '88 Opponents

## Western State (0-0) First Meeting

Northwestern Oklahoma State (5-11-1)		
1937 FHSU	21	NWOSU 6
1947 FHSU	20	NWOSU 6
1948 FHSU	20	NWOSU 0
1957 FHSU	21	NWOSU 14
1958 NWOSU	34	FHSU 14
1968 FHSU	33	NWOSU 21
1969 NWOSU	34	FHSU 6
1970 NWOSU	27	FHSU 3
1971 NWOSU	40	FHSU 7
1972 FHSU	21	NWOSU 21
1973 NWOSU	20	FHSU 17
1974 NWOSU	28	FHSU 18
1975 NWOSU	21	FHSU 20
1976 NWOSU	44	FHSU 27
1977 NWOSU	31	FHSU 27
1978 NWOSU	21	FHSU 18
1986 NWOSU	44	FHSU 21
1987 NWOSU	26	FHSU 12

Largest victories in the Series:  
FHSU - 20, 20-0 (1948)  
NWOSU - 33, 40-7 (1971)

## Cameron University (0-1)

1987 CU	37	FHSU 12
---------	----	---------

Largest victories in the Series:  
FHSU - none  
CU - 25, 37-12 (1987)

## Kearney State College (16-23-1)

1926 FHSU	53	KSC 0
1927 FHSU	25	KSC 6
1931 KSC	2	FHSU 0
1932 FHSU	19	KSC 0
1933 FHSU	41	KSC 0
1938 FHSU	38	KSC 6
1954 FHSU	41	KSC 14
1955 FHSU	20	KSC 12
1956 KSC	18	FHSU 6
1957 KSC	27	FHSU 0
1958 KSC	35	FHSU 7
1959 FHSU	19	KSC 14
1960 FHSU	20	KSC 12
1961 FHSU	24	KSC 0
1962 KSC	27	FHSU 13
1963 KSC	26	FHSU 14
1964 FHSU	35	KSC 14
1965 FHSU	21	KSC 13
1966 FHSU	20	KSC 0
1967 KSC	27	FHSU 7
1968 KSC	29	FHSU 10
1969 KSC	28	FHSU 12
1970 KSC	30	FHSU 21
1971 KSC	40	FHSU 21
1972 KSC	24	FHSU 21
1973 FHSU	37	KSC 6
1974 KSC	26	FHSU 14
1975 KSC	10	FHSU 7
1976 FHSU	27	KSC 21*
1977 KSC	26	FHSU 6*
1978 KSC	27	FHSU 12*
1979 KSC	17	FHSU 7*
1980 FHSU	21	KSC 21*
1981 KSC	45	FHSU 22*
1982 KSC	27	FHSU 16*
1983 FHSU	44	KSC 21*
1984 KSC	47	FHSU 14*
1985 FHSU	35	KSC 28*
1986 KSC	39	FHSU 21*
1987 KSC	44	FHSU 7*

Largest victories in the Series:  
FHSU - 53, 53-0 (1926)  
KSC - 37, 44-7 (1987)

## Missouri Southern (8-9-1)

1970 FHSU	36	MSSC 29
1971 FHSU	37	MSSC 3
1972 MSSC	40	FHSU 15
1973 FHSU	14	MSSC 9
1974 MSSC	10	FHSU 9
1975 FHSU	32	MSSC 24
1976 FHSU	21	MSSC 30*
1977 FHSU	35	MSSC 29*
1978 MSSC	31	FHSU 14*
1979 MSSC	17	FHSU 16*
1980 FHSU	34	MSSC 12*
1981 FHSU	27	MSSC 24*

1982 FHSU	28	MSSC 28*
1983 MSSC	42	FHSU 10*
1984 MSSC	22	FHSU 15*
1985 MSSC	22	FHSU 20*
1986 MSSC	3	FHSU 0*
1987 MSSC	38	FHSU 13*

Largest victories in the Series:  
FHSU - 34, 37-3 (1971)  
MSSC - 32, 42-10 (1983)

## Wayne State (5-5-1)

1977 WSC	21	FHSU 17*
1978 FHSU	17	WSC 17*
1979 WSC	12	FHSU 9*
1980 WSC	34	FHSU 30*
1981 WSC	45	FHSU 22*
1982 FHSU	17	WSC 6*
1983 FHSU	38	WSC 14*
1984 FHSU	21	WSC 14*
1985 FHSU	26	WSC 21*
1986 FHSU	14	WSC 0*
1987 FHSU	29	WSC 24*

Largest victories in the Series:  
FHSU - 14, 38-14 (1983)  
and 14-0 (1986)  
WSC - 23, 45-22 (1981)

## Pittsburg State (17-35-8)

1925 PSU	6	FHSU 0
1926 PSU	7	FHSU 0
1927 PSU	13	FHSU 7
1928 FHSU	6	PSU 0
1929 PSU	12	FHSU 0
1930 PSU	14	FHSU 0
1931 PSU	13	FHSU 6
1932 PSU	13	FHSU 0
1933 FHSU	0	PSU 0
1934 PSU	19	FHSU 0
1935 PSU	21	FHSU 0
1936 FHSU	23	PSU 0
1937 FHSU	13	PSU 6
1938 FHSU	19	PSU 6
1939 FHSU	7	PSU 0
1940 FHSU	6	PSU 0
1941 PSU	26	FHSU 0
1942 PSU	13	FHSU 6
1943 FHSU	0	PSU 0
1944 FHSU	0	PSU 0
1945 FHSU	27	PSU 7
1946 PSU	26	FHSU 7
1947 PSU	6	FHSU 0
1948 PSU	3	FHSU 0
1949 FHSU	7	PSU 0
1950 FHSU	12	PSU 12
1951 FHSU	22	PSU 7
1952 PSU	13	FHSU 7
1953 PSU	27	FHSU 6
1954 FHSU	54	FHSU 9
1955 FHSU	16	PSU 7
1956 FHSU	14	FHSU 12
1957 PSU	44	FHSU 7
1958 FHSU	41	FHSU 7
1959 FHSU	25	PSU 20
1960 FHSU	42	FHSU 12
1961 FHSU	40	PSU 7
1962 FHSU	21	PSU 7
1963 FHSU	21	FHSU 12
1964 FHSU	21	FHSU 12
1965 FHSU	19	FHSU 13
1966 FHSU	13	FHSU 13
1967 FHSU	28	PSU 20
1968 FHSU	14	PSU 14
1969 FHSU	28	PSU 14
1970 FHSU	28	PSU 14
1971 FHSU	26	PSU 14
1972 FHSU	21	FHSU 7
1973 FHSU	19	PSU 13
1974 FHSU	20	PSU 19*
1975 FHSU	29	PSU 29*
1976 FHSU	35	PSU 30*
1977 FHSU	27	FHSU 26*
1978 FHSU	21	FHSU 17*
1979 PSU	57	FHSU 32*
1980 PSU	37	FHSU 15*
1981 PSU	29	FHSU 25*
1982 PSU	20	FHSU 13*
1983 PSU	54	FHSU 46*
1984 PSU	45	FHSU 14*
1985 PSU	62	FHSU 13*

Largest victories in the Series:  
FHSU - 33, 40-7 (1964)  
PSU - 54, 54-0 (1957)

## Missouri Western (8-3-1)

1976 FHSU	14	MWSC 9*
1977 MWSC	25	FHSU 22*
1978 FHSU	35	MWSC 30*
1979 FHSU	38	MWSC 20*
1980 FHSU	28	MWSC 28*
1981 MWSC	39	FHSU 31*
1982 FHSU	15	MWSC 13*
1983 FHSU	41	MWSC 21*
1984 MWSC	19	FHSU 7*
1985 FHSU	17	MWSC 7*
1986 FHSU	35	MWSC 0*
1987 FHSU	23	MWSC 17*

Largest victories in the Series:  
FHSU - 35, 35-0 (1986)  
MWSC - 12, 19-7 (1984)

## Emporia State (26-34-2)

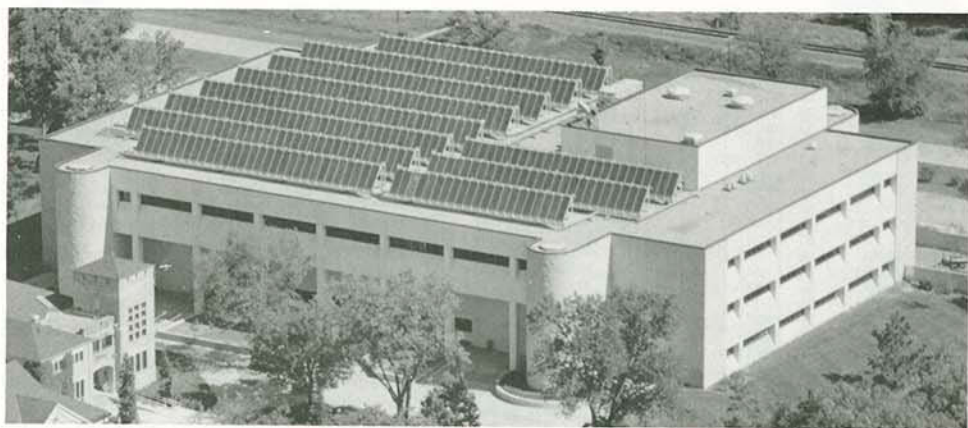
1923 ESU	26	FHSU 3
1924 ESU	19	FHSU 2
1925 ESU	13	FHSU 3
1926 ESU	14	FHSU 0
1927 ESU	26	FHSU 0
1928 ESU	34	FHSU 0
1929 ESU	6	FHSU 0
1930 FHSU	0	ESU 0
1931 ESU	26	FHSU 0
1932 FHSU	13	ESU 0
1933 FHSU	15	ESU 0
1934 FHSU	15	ESU 0
1935 FHSU	1	ESU 0*
1936 FHSU	15	ESU 7*
1937 ESU	14	FHSU 6
1938 FHSU	14	ESU 0
1939 ESU	27	FHSU 0
1940 ESU	6	FHSU 0
1941 ESU	22	FHSU 19
1942 ESU	40	FHSU 0
1943 ESU	25	ESU 6
1944 FHSU	39	FHSU 7
1945 ESU	25	ESU 0
1946 FHSU	9	ESU 0
1947 ESU	27	FHSU 0
1948 ESU	14	FHSU 7
1949 ESU	28	FHSU 6
1950 ESU	20	FHSU 7
1951 ESU	20	ESU 6
1952 ESU	32	ESU 20
1953 ESU	14	FHSU 13
1954 FHSU	7	ESU 7
1955 FHSU	26	FHSU 0
1956 ESU	27	FHSU 14
1957 ESU	12	ESU 7*
1958 FHSU	14	FHSU 13
1959 ESU	28	ESU 13
1960 ESU	20	ESU 19
1961 FHSU	42	ESU 7
1962 FHSU	27	ESU 13
1963 FHSU	26	ESU 21
1964 FHSU	41	FHSU 7
1965 FHSU	41	FHSU 26
1966 FHSU	42	FHSU 31
1967 FHSU	23	FHSU 21
1968 ESU	27	FHSU 7
1969 ESU	15	FHSU 9
1970 ESU	28	FHSU 13
1971 ESU	20	ESU 8
1972 ESU	6	ESU 2*
1973 ESU	10	FHSU 0*
1974 ESU	27	ESU 17*
1975 FHSU	31	ESU 21*
1976 FHSU	34	ESU 6*
1977 ESU	16	ESU 15*
1978 FHSU	29	ESU 28*
1979 FHSU	43	ESU 10*
1980 FHSU	17	FHSU 7*
1981 FHSU	35	ESU 26*
1982 FHSU	25	FHSU 16*
1983 FHSU	40	ESU 20*

Largest victories in the Series:  
FHSU - 35, 42-7 (1965)  
ESU - 40, 40-0 (1942)





# Fort Hays State University



Rarick Hall is one of the newest buildings on the Fort Hays State campus and the largest state-owned, partially solar heated building in Kansas. The hall provides office and classroom space for the School of Education, the departments of art, history, sociology, political science, mathematics, philosophy, foreign languages, and English, and the area of journalism.

Founded in 1902 on the Plains of Western Kansas, Fort Hays State University is the second youngest of the six state universities of higher education.

From an exciting beginning, when 34 students were greeted by two faculty members and a 19-course curriculum, our University has grown to a student body of 5,100, a faculty of nearly 300, a support staff of 250 and a curriculum comprised of 1,500 courses.

Fort Hays State University is one of six state-assisted universities governed by a Board of Regents appointed by the Governor of the State of Kansas.

The main campus of FHSU sits on 200 of the 4,160 acres owned by the State of Kansas and deeded to the University. Winding Big Creek, with its shady, grassy banks, traverses the campus and provides not only a tranquil, conducive learning atmosphere, but also a natural laboratory for students in the biological sciences. Our campus has often been called the prettiest in Kansas.

Fort Hays State University is located in Hays, the largest city in northwest Kansas. A progressive city of 17,500 people, Hays is an old cow town on the Union Pacific railroad. The old and new blend beautifully to form a city that is small enough you can feel comfortable in, yet is large enough to provide culture and shopping facilities second to none.

The University is comprised of five schools: Arts and Sciences, Business, Education, Graduate and Health and Life Sciences.

FHSU is academically superior to any comparable universities and is richly endowed by heritage and tradition. A recent survey of our students showed that while there are a multitude of reasons why students come to our University, their overwhelming response was "because of the University's reputation for academic excellence."

Fort Hays State University supports one of the most extensive intercollegiate sports programs of any comparable size college or university in America. More than 350 athletes annually compete in 14 men's and women's sports. FHSU is a member of the strong Central States Intercollegiate Conference, a league made up of eight schools from the states of Kansas, Missouri and Nebraska.



## Lewis Field



Lewis Field Stadium played host to 21,608 fans in '87 which included a crowd of over 6,000 for homecoming activities.

Lewis Field Stadium, the 7,000-seat home of the Tigers, was constructed in 1936 on what was formerly the Golden Belt Fairgrounds, and named in honor of William Alexander Lewis, president of Fort Hays State University from 1913 to 1933.

The native limestone structure is located beside a spacious tree-lined drive and is just a short walk from the campus residence halls and the downtown business district.

An average of 4,300 fans saw the Tigers play in '87 with the western Kansas weather good for most contests. The largest crowd was projected at 6,012 for a homecoming game with Wayne State.

The stadium turf is Bermuda grass, the same strong-rooted plant used in many golf course greens.

Dressing rooms, concession areas, athletic training facilities and equipment storage rooms are located under the grandstands. New restroom facilities were completed before the 1986 season, replacing older outdated ones.

Admittance to the stadium is allowed through two main gates, one on the east side and one on the west side. Four ticket windows are in service for each game.

Atop both grandstands are press box facilities which provide seating for writers, statisticians, radio stations, scouts and film/video crews. The home (KAYS Radio) radio facilities are located on the west side along with the home coaches box and all film/video crews. The east side is made available for all press, visiting radio, FHSU sports information, visiting information personnel, public address, scoreboard operations and a private box for the president of the university and guests.

An eight-lane cinder track surrounds the playing field and adjacent to the stadium are regulation-size practice facilities.





## Dr. Edward H. Hammond - President



Dr. Edward H. Hammond was named the eighth President of Fort Hays State University on April 18, 1987. Hammond, who was born in McAllen, TX, was Vice President for Student Affairs and associate professor of education at the University of Louisville before assuming his current position.

One of the president's goals in his first year was to advance the computerization of the FHSU campus. He has accomplished a good bit of that task with the University's first computer lab in a residence hall, library computerization and the use of computers has been implemented into teaching and curriculum.

Hammond brings a wealth of experience to the Hays campus. Prior to his responsibilities at Louisville, he was Vice President for Student Affairs and assistant professor in the School of Education at Seton Hall University in South Orange, N.J.

Other prior positions were: Assistant to the President for Student Relations and assistant professor in the Department of Higher Education at Southern Illinois (Carbondale) University; Assistant Dean of Students at the Carbondale campus; counselor at the University of Missouri-Columbia; and Director of Student Affairs at the North Central Campus of Purdue University.

Hammonds honors include being named to Who's Who in Education, Who's Who in the South, Outstanding Young Men of America, the President's Commission on the Rights and Freedoms of Students and the Inter Association Task Force on College Alcohol Abuse and Misuse.

Hammond has published extensively and is in demand nationally as an educational consultant. He has served on several occasions as a professional expert witness in court cases.

Hammond and his wife, Vivian, are the parents of three children, daughters Kelly and Julie, and son Lance.

## Robert Van Poppel - Director of Athletics



Robert Van Poppel, who brought with him strong and successful experience in the educational and private sectors, was named to the post of director of athletics at Fort Hays State University on April 22, 1985.

Van Poppel uses a guideline in life of "strive for excellence, no excuses and no compromises." In his two years at Fort Hays State, Van Poppel has taken steps to insure that our athletes are getting along well academically as well as competing for conference, district and national honors. He has made great strides to improve the athletic department's relationship with its former letterwinners by reviving a dormant K-Club membership and implementing a Varsity Club for persons who have lettered since 1975. Van Poppel also was instrumental in forming and inducting the first 20 members

into the Tiger Sports Hall of Fame.

A native of Ohio, Van Poppel was highly successful in the insurance business in Richmond, IN., before coming to FHSU. His administrative background in athletics dates back to Earlham College in Richmond where he was athletic director from 1977 to 1982. He coordinated the entire program for a small liberal arts college with an enrollment of 1,300. He was responsible for a total of 16 varsity sports.

Van Poppel has also held posts as a coach and health, physical education and recreation instructor at Chadron (NE) State College, 1973-77; Wittenburg (OH) University, 1970-73; and the University of Wisconsin-Whitewater, 1969-70. He has also held positions in athletics at the high school level in Ohio.

A four-time letterwinner in basketball as a collegian, Van Poppel received his B.S. degree in Education from Bowling Green State University in 1966. He earned a master's degree in Education from Ohio University in 1968. Indiana University was the site of advance graduate work in administration for Van Poppel.

Bob and his wife, Lynne, reside in Hays and are the parents of five children: Andra (17), Bret (19), Clete (13), Helen (27) and Tisha (17).



# '87 FHSU Statistics

## GAME-BY-GAME RESULTS

G#	Date	Opponent	Score	Attend.	Site	Overall Record	Conference Record
1	9/ 5	*Lincoln University (MO)	55-14 W	4,322	H	1-0-0	
2	9/12	†Northwestern Oklahoma State	12-26 L	3,800	A	1-1-0	
3	9/19	*Cameron University (OK)	12-37 L	5,000	A	1-2-0	
4	9/26	*Kearney State (NE)	7-44 L	5,842	H	1-3-0	0-1-0
5	10/ 3	*Missouri Southern	13-38 L	4,000	A	1-4-0	0-2-0
6	10/10	*Wayne State (NE)	29-24 W	6,012	H	2-4-0	1-2-0
7	10/17	*Pittsburg State	13-62 L	1,853	H	2-5-0	1-3-0
8	10/24	*Missouri Western	23-17 W	3,000	A	3-5-0	2-3-0
9	10/31	*Emporia State University	40-20 W	3,579	H	4-5-0	3-3-0
10	11/ 7	*Washburn University	12-49 L	3,500	A	5-5-0	4-3-0

\* CSIC                      \* NCAA II                      † NAIA Non-Conference                      † Forfeit  
Overall Record: 5-5-0                      Conference: 4-3-0                      Home: 2-3-0                      Away: 1-4-0

## TEAM STATISTICS

CATEGORY	FHSU	OPP.
First Downs (Rush)	60	107
First Downs (Pass)	80	57
First Downs (Penalty)	17	8
FIRST DOWNS (TOTAL)	157	172
Rushing Attempts	394	496
Rushing Yards Gained	1,313	2,702
Rushing Yards Lost	457	321
NET RUSHING YARDS	856	2,381
Yards per Rush	2.2	4.8
Rush Yards per Game	85.6	238.1
Passes Attempted	335	198
Passes Completed	156	86
Passes Had Intercepted	21	7
Pass Completion Percent	.466	.434
NET YARDS PASSING	2,061	1,329
Yards per Pass Attempt	6.2	6.7
Yards per Pass Completion	13.2	15.5
Passing Yards per Game	206.1	132.9
Total Plays	729	694
Total Plays per Game	72.9	69.4
TOTAL NET YARDS	2,917	3,710
Yards Gained per Play	4.0	5.4
Yards Gained per Game	291.7	371.0
Kickoff Returns/Yards	50/969	37/664
Avg. Yard per K. Return	19.4	18.0
Kickoff Returns per Game	5.0	3.7
Punt Returns/Yards	17/236	30/392
Avg. per Punt Return	13.9	13.1
Punt Returns per Game	1.7	3.0
Intercept. Return/Yards	7/90	21/270
Avg. per Intercept. Return	12.9	12.9
Avg. Intercept. per Game	.7	2.1
Punts	67	46
Total Punt Yardage	2,219	1,666
Average Yards per Punt	33.1	36.2
Avg. Number per Game	6.7	4.6
Fumbles/Fumbles Lost	29/17	33/19
Penalties/Yards Lost	76/642	78/648
Average Yards per Penalty	8.5	8.3
Penalties per Game	7.6	7.8
Yards Lost per Game	64.2	64.8
2 Point/1 Point Safeties	1/0	1/0
3rd Down Conver./Made	172/59	140/50
Conversion Percentage	.343	.357

## SCORE BY QUARTERS

	1st	2nd	3rd	4th	Tot.	Avg.
FHSU	40	78	52	46	216	21.6
Opponents	91	85	92	63	331	33.1

## Individual Player Statistics

RUSHING	G/GS	Att.	Gain	Loss	Net	Avg.	LR
Tim Winter, RB	9/ 6	117	421	8	413	3.5	23
Tyrone Tracy, SB	10/10	82	298	12	286	3.5	19
David Lemons, RB	8/ 2	32	140	3	137	4.3	34
Mickey Sanders, RB	5/ 1	27	123	2	121	4.5	29
Ken Crandall, SB	3/ 0	1	31	0	31	31.0	31
Mike Socci, QB	2/ 0	22	66	38	28	1.3	14
Henry Alexander, DB	5/ 4	1	25	0	25	25.0	25
Eric Busenbark, SB	10/ 9	8	22	1	21	2.6	11
Jeff Sullivan, DB	4/ 1	1	13	0	13	13.0	13
Kevin Cowan, QB	2/ 0	2	10	0	10	5.0	8
Ken Faulkner, WR	6/ 0	1	2	0	2	2.0	2
Doug Ray, SB	8/ 0	1	0	8	-8.0	-8.0	0
Craig Modellmog, QB	10/10	99	162	385	-233	-2.3	17
FHSU	10/10	394	1,313	457	856	2.2	--
Opponents	10/10	496	2,702	321	2,381	4.8	--

## INTERCEPTIONS

	G	Int.	Yds.	Y/Ret.	Long Int.
Dusty Trail, DB	9	3	27	9.0	23
Kurt Dinkel, DB	5	1	14	14.0	14
Mike Allen, DB	9	1	0	.0	0
Greg Woodward, DB	5	1	31	31.0	31
Edward Faagai, LB	7	1	18	18.0	18
FHSU	10	7	90	12.9	--
Opponents	10	21	270	12.9	--

## SCORING

	G	Rept	Rush	Ret.	Tot.	Kick	Pass	Points	FGs	Safe	Pts.	P/G
Tyrone Tracy, SB	10	8	9	1	18	0	0	0	0	0	108	10.8
Steve Schroeder, PK	8	0	0	0	0	8	0	0	8	4	20	2.5
Tom Odle, PK	7	0	0	0	0	5	0	0	5	3	14	2.0
Craig Modellmog, QB	10	0	2	0	2	0	0	0	0	0	12	1.2
Tim Winter, RB	9	0	2	0	2	0	0	0	0	0	12	1.3
Jason Leiker, WR	2	2	0	0	2	0	0	0	0	0	12	6.0
David Lemons, RB	8	0	1	0	1	0	1	0	1	0	8	1.0
Ken Crandall, SB	3	1	0	0	1	0	0	0	0	0	6	2.0
Kevin Cowan, QB	2	0	1	0	1	0	0	0	0	0	6	3.0
Mickey Sanders, RB	5	0	1	0	1	0	0	0	0	0	6	1.2
Dean Tenbrink, WR	7	1	0	0	1	0	0	0	0	0	6	.9
FHSU	10	12	16	1	29	13	1	0	14	7	212	21.2
Opponents	10	9	77	2	88	32	1	1	34	7	587	58.7





# '87 FHSU Statistics

PASSING	G/GS	Att	Cmp.	Pct.	Int.	Yds.	Yds./Game	TDs	Pass Eff.	Long Pass
Craig Modellmog, QB	10/10	291	138	.474	16	1,938	193.8	11	104.8	70
Mike Succi, QB	2/0	37	12	.324	5	102	51.0	0	28.6	17
Kevin Cowan, QB	2/0	5	5	1.000	0	28	14.0	1	213.0	11
Eric Busenbark, SB	10/9	1	0	.000	0	0	0	0	.0	0
Ken Crandall, SB	3/0	1	1	1.000	0	-7	-2.3	0	41.2	0
FHSU	10/10	335	156	.466	21	2,061	206.1	12	97.5	--
Opponents	10/10	198	86	.434	7	1,329	132.9	10	109.4	--

TOTAL OFFENSE	-----Rushing Yards-----				----Passing Yards----			Plays	Yards	Yards/Game
	Att.	Gain	Loss	Net	Att.	Cmp.	Yards			
Craig Modellmog, QB	99	162	385	-223	291	138	1,938	390	1,715	171.5
Tim Winter, RB	117	421	8	413	0	0	0	117	413	45.9
Tyrone Tracy, SB	82	298	12	286	0	0	0	82	286	28.6
David Lemons, RB	32	140	3	137	0	0	0	32	137	17.1
Mike Succi, QB	22	66	38	28	37	12	102	59	130	65.0
Mickey Sanders, RB	27	123	2	121	0	0	0	27	121	24.2
Kevin Cowan, QB	2	10	0	10	5	5	28	7	38	19.0
Henry Alexander, DB	1	25	0	25	0	0	0	1	25	5.0
Ken Crandall, SB	1	31	0	31	1	1	-7	2	24	8.0
Eric Busenbark, SB	8	22	1	21	1	0	0	9	21	2.1
Jeff Sullivan, DB	1	13	0	13	0	0	0	1	13	3.3
Ken Faulkner, WR	1	2	0	2	0	0	0	1	2	.3
Doug Ray, SB	1	0	8	-8	0	0	0	1	-8	-1.0
FHSU	394	1,313	457	856	335	156	2,061	729	2,917	291.7
Opponents	496	2,702	321	2,381	198	86	1,329	694	3,710	371.0

RECEIVING	G/GS	Recp.	Yards	Yards/Recp.	Yards/Game	Recp./Game	Long Recp.
Tyrone Tracy, SB	10/10	51	873	17.1	87.3	5.1	70
Eric Busenbark, SB	10/9	37	397	10.7	39.7	3.7	32
Jerald Demery, WR	8/8	17	189	11.1	23.6	2.1	31
Ken Faulkner, WR	6/0	14	140	10.0	23.3	2.3	19
Dean Tenbrink, WR	7/4	14	248	17.7	35.4	3.0	45
Tim Winter, RB	9/6	8	54	6.8	6.0	.9	19
Jason Leiker, WR	2/2	4	67	16.8	33.5	2.0	47
Garrett Hicks, WR	3/0	4	42	10.5	14.0	1.3	16
Ken Crandall, SB	3/0	1	9	9.0	3.0	.3	9
David Lemons, RB	8/2	1	-5	-5.0	-6	.1	0
Tom Odle, PK	7/0	1	-7	-7.0	-1.0	.1	0
Chris Remley, WR	1/1	1	11	11.0	11.0	1.0	11
Kelly Kittrell, WR	1/0	1	5	5.0	5.0	1.0	5
FHSU	10/10	154	2,023	13.1	202.3	15.4	--
Opponents	10/10	86	1,329	15.5	132.9	8.6	--

ALL-PURPOSE RUNNING	Rushing		Receiving		Punt Ret.		KO Ret.		Yds/Plays	Yds/Yds	Play Game
	G	Att.	Yds	No.	Yds	No.	Yds	No.			
Tyrone Tracy, SB	10	82	286	51	873	15	224	30	668	178	2,051
Tim Winter, RB	9	117	413	8	54	0	0	0	0	125	467
Eric Busenbark, SB	10	8	21	37	397	0	0	0	0	45	418
Dean Tenbrink, WR	7	0	0	14	248	0	0	5	71	19	319
Jerald Demery, WR	8	0	0	17	189	0	0	6	115	23	304
David Lemons, RB	8	32	137	1	-5	0	0	3	38	36	170
Ken Faulkner, WR	6	1	2	14	140	0	0	1	10	16	152
Mickey Sanders, RB	5	27	121	0	0	0	0	2	27	29	148
Jason Leiker, WR	2	0	0	4	67	1	5	0	0	5	72
Garrett Hicks, WR	3	0	0	4	42	0	0	0	0	4	42
Ken Crandall, SB	3	1	31	1	9	0	0	0	0	2	40
Doug Ray, SB	8	1	-8	0	0	0	0	3	40	4	32
Mike Succi, QB	2	22	28	0	0	0	0	0	0	22	28
Henry Alexander, DB	5	1	25	0	0	0	0	0	0	1	25
Jeff Sullivan, DB	4	1	13	0	0	0	0	0	0	1	13
Chris Rumley, WR	1	0	0	1	11	0	0	0	0	1	11
Kevin Cowan, QB	2	2	10	0	0	0	0	0	0	2	10
Doug Blank, DE	7	0	0	0	0	1	7	0	0	1	7
Kelly Kittrell, WR	1	0	0	1	5	0	0	0	0	1	5
Tom Odle, PK	7	0	0	1	-7	0	0	0	0	1	-7
Craig Modellmog, QB	10	99	-223	0	0	0	0	0	0	99	-223
FHSU	10	394	856	154	2,023	17	236	50	969	615	4,084
Opponents	10	496	2,381	86	1,329	30	392	37	664	649	4,766

PUNT RETURNS	G	Ret.	Yards	Yards/Ret.	Yards/Game	TDs	Long Ret.
Tyrone Tracy, SB	10	15	224	14.9	22.4	1	65
Jason Leiker, WR	2	1	5	5.0	2.5	0	5
Doug Blank, DE	7	1	7	7.0	1.0	0	7
FHSU	10	17	236	13.9	23.6	1	--
Opponents	10	30	392	13.1	39.2	0	--

KICKOFF RETURNS	G	Ret.	Yds.	Yards/Ret.	Yards/Game	Long Ret.
Tyrone Tracy, SB	10	30	668	22.3	66.8	42
Jerald Demery, WR	8	6	115	19.2	14.4	30
Dean Tenbrink, WR	7	5	71	14.2	10.1	20
Doug Ray, SB	8	3	40	13.3	5.0	14
David Lemons, RB	8	3	38	12.7	4.8	20
Mickey Sanders, RB	5	2	27	13.5	5.4	14
Ken Faulkner, WR	6	1	10	10.0	1.7	10
FHSU	10	50	969	19.4	96.9	--
Opponents	10	37	664	18.0	66.4	--

PUNTING	G	Pnts	Yds.	Yds. Punt	Avg. Op/20	Inside Blkd.	1-19	20-29	30-39	40-49	50-59	Long
Tom Odle, PK	7	1	45	45.0	0	0	0	0	1	0	45	
Henry Alexander, DB	5	27	973	36.0	2	0	0	6	13	6	2	52
Doug Ray, SB	8	39	1,201	30.8	1	0	2	13	17	5	2	52
FHSU	10	67	2,219	33.1	3	0	2	19	30	12	4	--
Opponents	10	46	1,666	36.2	5	5	3	9	21	9	4	--

FIELD GOALS	G	20-29 Yards				30-39 Yards				40-49 Yards				Over 50				-----Total-----				Blk	Lng
		A	M	%		A	M	%		A	M	%		A	M	%		A	M	%			
Steve Schroeder, PK	10	2	2	1.0		3	2	.67		0	0	.00		0	0	.00		5	4	.80		0	32
Tom Odle, PK	10	1	1	1.0		3	2	.67		0	0	.00		0	0	.00		4	3	.75		0	36
FHSU	10	3	3	1.0		6	4	.67		0	0	.00		0	0	.00		9	7	.78		0	--
Opponents	10	3	3	1.0		1	2	2.0		2	1	.50		1	1	1.0		7	7	1.0		0	--

PATs	Kicking				Cons		Kcks		Rushing			Pass Receiving			Total		Tot.	
	G	Att	Md	%	Md	Bkld	Att	Md	%	Att	Md	%	Att	Md	%	Att	Md	%
S. Schroeder	8	12	8	.67	1	0	0	0	.00	0	0	.00	12	8	.67	8	8	.67
T. Odle	7	9	5	.56	2	0	0	0	.00	0	0	.00	9	5	.56	5	5	.56
D. Lemons	8	0	0	.00	0	0	0	0	.00	1	1	1.0	1	1	1.0	1	1	1.0
C. Moddelmog	10	0	0	.00	0	0	1	0	.00	0	0	.00	1	0	.00	1	0	.00
K. Crandall	3	0	0	.00	0	0	1	0	.00	0	0	.00	1	0	.00	1	0	.00
T. Tracy	10	0	0	.00	0	0	1	0	.00	0	0	.00	1	0	.00	1	0	.00
FHSU	10	21	13	.62	3	0	3	0	.00	1	1	1.0	25	14	.56	15	15	.62
Opponents	10	35	32	.91	3	1	3	1	.33	2	1	.50	40	34	.85	36	36	.91

DEFENSE	G/GS	UT	AT	TT	Sack/Yards	Total/Yards	Fum Rec.	Blek	PBR	INT	Safe
D. Charbonneau, DE	10/10	35	24	59	1/7	6/31	2	0	1	0	0
F. Brown, DE	10/9	38	18	56	6/41	10/47	1	0	2	0	0
Edm. Faagai, LB	9/4	30	24	54	0/0	4/4	2	0	1	0	0
B. Stindt, LB	10/7	29	25	53	0/0	0/0	0	0	1	0	0
D. Trail, DB	9/9	42	9	51	1/7	5/13	0	0	3	3	0
S. Heft, DB	10/10	36	13	49	0/0	/0	0	0	5	0	0
K. Dinkel, DB	9/4	27	19	46	0/0	1/1	2	1	5	1	1
G. Yost, DL	10/10	29	16	45	3/20	13/58	1	0	0	0	0
M. Allen, DB	9/6	25	15	40	0/0	1/3	0	1	2	1	0
Edw. Faagai, LB	7/3	21	16	37	0/0	1/2	0	0	0	1	0
R. Gordon, NC	10/8	15	17	32	1/6	3/6	0	0	0	0	0
C. Tribble, NC	9/2	20	8	28	1/3	6/16	0	0	0	0	0
K. Dinkel, DB	3/1	15	11	26	0/0	2/4	1	0	0	0	0
G. Woodward, DB	5/5	18	8	26	0/0	0/0	1	0	2	1	0
D. Trowell, LB	7/2	10	14	24	0/0	1/1	0	0	0	0	0
D. Blank, DE	7/2	13	10	23	1/10	4/21	1	1	0	0	1
R. Vera, DE	9/9	11	11	22	0/0	2/10	1	0	0	0	0
H. Alexander, DB	5/4	10	9	19	0/0	0/0	1	0	3	0	0
S. Jones, DB	7/1	8	11	19	0/0	1/3	0	0	1	0	0
S. McKinney, LB	6/1	6	10	16	0/0	0/0	1	0	0	0	0
T. Hinz, WR	3/0	6	6	12	0/0	1/1	0	0	0	0	0
J. Sullivan, DB	4/1	6	5	11	0/0	0/0	1	0	0	0	0
J. Befort, DL	5/0	6	2	8	0/0	0/0	1	0	0	0	0
K. McGee, DL	3/1	4	4	8	1/4	1/4	0	0	1	0	0
R. Sharpley, DE	2/0	3	3	6	0/0	0/0	0	0	0	0	0
E. Sylvester, DL	3/0	3	2	5	0/0	0/0	0	0	0	0	0
D. Puckett, DB	4/0	4	1	5	0/0	0/0	1	0	0	0	0
M. Miller, DB	3/0	2	3	5	0/0	0/0	0	0	2	0	0
D. Ray, SB	8/0	2	2	4	0/0	0/0	0	0	0	0	0
K. Weber, DL	2/0	2	2	4	0/0	0/0	0	0	0	0	0
J. Covington, DB	3/0	2	2	4	0/0	0/0	1	0	0	0	0
D. Lemons, RB	8/2	1	1	2	0/0	0/0	0	0	0	0	0
J. Karas, OT	3/3	1	1	2	0/0	0/0	1	0	0	0	0
J. Sawalich, DB	1/0	1	1	2	0/0	0/0	0	0	0	0	0
E. Busenbark, SB	10/9	2	0	2	0/0	0/0	0	0	0	0	0
C. Rollins, DT	1/0	1	1	2	0/0	0/0	0	0	0	0	0
T. Tracy, SB	10/10	0	1	1	0/0	0/0	0	0	0	0	0
T. Odle, PK	7/0	1	0	1	0/0	0/0	0	0	0	0	0
D. Peters, OT	1/0	1	0	0	0/0	0/0	0	0	0	0	0
M. MacNamee	2/0	1	0	1	0/0	0/0	0	0	1	0	0
D. Becker, DE	1/0	1	0	1	0/0	0/0	0	0	0	0	0
G. Bishop, DE	2/0	1	0	1	0/0	0/0	0	0	0	0	0
FHSU	10/10	488	325	813	15/98	66/223	19	3	30	7	2
Opponents	10/10	489	274	763	44/369	67/447	19	4	35	21	2





# 1987 In Review

## Fort Hays State 55, Lincoln 14

HAYS (Sept. 5) — Tom Odle's 35-yard field goal with 0:02 remaining in the first half put the Tigers up 30-7 with 16 points coming in the final 1:30 of the second quarter. Craig Modellmorg, in his first collegiate start, led the squad to 505 yards in total offense for FHSU. The freshman quarterback ran for two touchdowns and threw for another pair of scores. Both teams battled the fumble bug - FHSU had seven, losing four, while Lincoln lost all five times it fumbled. A balanced running attack with four Tiger rushers over 44 yards, but none above 66 paced the offense which rushed for 317 yards. Senior Eric Busenbark led all receivers with five catches for 87 yards.

Score by Quarters	1	2	3	4	Final
Lincoln	0	7	0	7	14
Fort Hays State	7	23	19	6	55

FHSU - Jason Leiker 5 pass from Craig Modellmorg (Odle kick) - 11:37/1st

LU - Alex Reeds 63 pass from Steve Bohlken (Bohlken kick) - 10:32/2nd

FHSU - Tyrone Tracy 65 punt return (Odle kick) - 7:32/2nd

FHSU - Modellmorg 7 run (Odle kick failed) - 1:30/2nd

FHSU - Odle 35 field goal - 0:02/2nd

FHSU - Modellmorg 7 run (Schroeder kick) - 12:17/3rd

FHSU - Schroeder 32 field goal - 7:10/3rd

FHSU - Kevin Cowan 8 run (Schroeder kick) - 6:14/3rd

FHSU - Kurt Dinkel blocked punt for safety - 4:24/3rd

FHSU - Kenny Crandall 9 pass from Cowan (Schroeder kick failed) - 14:06/4th

LU - Bohlken 83 run (Bohlken kick) - 12:03/4th

Game Statistics	LU	FHSU
First Downs	7	23
Rushes-Yards	44-152	52-317
Passing Yards	106	188
Passing	6-23-0	15-28-3
Total Offense	258	505
Punts-Average	9-27.5	4-33.3
Fumbles-Lost	5-5	7-4
Penalties-Yards	6-60	8-60

### Individual Rushing Leaders

FHSU - Mickey Sanders 6-66, David Lemons 9-57, Craig Modellmorg 9-56

LU - Steve Bohlken 13-109, Paul Tippler 15-44

### Individual Passing Leaders

FHSU - Craig Modellmorg 13-26-168-3, Kevin Cowan 2-20-0

LU - Steve Bohlken 6-23-106-0

### Individual Receiving Leaders

FHSU - Eric Busenbark 5-87, Jerald Demery 3-35, Tyrone Tracy 3-33

LU - Alex Reeds 2-68

### Individual Tackle Leaders

FHSU - Brian Stindt 8 (4 UT/4 AT), Kurt Dinkel 7 (6 UT/1 AT)

LU - Montae Perkins 9 (8 UT/1 AT), Steve Jones 8 (7 UT/1 AT)

## Northwestern Oklahoma State 26 Fort Hays State 12

ALVA, OK (Sept. 12) — It didn't take long in this game to find out how the breaks would go. Craig Modellmorg was intercepted for a 22-yard touchdown on FHSU's first series of downs. Northwestern Oklahoma State also took advantage of good field position on its fourth possession when Troy Chestnut completed a one-play touchdown drive with a 29-yard pass to Tim Albin. The Tiger running game was stifled by the Ranger defense managing only 15 net yards. The vaunted FHSU passing attack was not as efficient as usual although Tyrone Tracy caught seven Modellmorg passes for 113 yards. Modellmorg had a rough outing with two interceptions and was sacked seven times for 32 yards in losses.

Score by Quarters	1	2	3	4	Final
Fort Hays State	0	12	0	0	12
N.W. Oklahoma	13	6	0	7	26

NWOSU - Leonard Smith 22 interception return (Bratcher kick) - 10:45/1st

NWOSU - Tim Albin 29 pass from Troy Chestnut (Bratcher kick failed) - 1:07/1st

FHSU - Mickey Sanders 1 run (Odle kick failed) - 9:25/2nd

NWOSU - Steve Duckett 22 run (run failed) - 6:42/2nd

FHSU - Tyrone Tracy 53 pass from Craig Modellmorg (pass failed) - 3:43/3rd

NWOSU - Rod Hurley 3 run (Bratcher kick) - 2:35/4th

Game Stats	FHSU	NWOSU
First Downs	8	15
Rushes-Yards	32-15	45-154
Passing Yards	176	158
Passing	12-27-2	8-15-1
Total Offense	191	312
Punts-Avg	8-41.0	6-33.5
Fumbles-Lost	2-0	2-1
Penalties-Yds	10-76	5-44

### Individual Rushing Leaders

FHSU - Mickey Sanders 13-36

NWOSU - Steve Duckett 11-58, Rod Hurley 12-39

### Individual Passing Leaders

FHSU - Craig Modellmorg 12-27-176-2

NWOSU - Troy Chestnut, 7-14-161-1

### Individual Receiving Leaders

FHSU - Tyrone Tracy 7-113, Eric Busenbark 3-35

NWOSU - Tim Albin 4-122

### Individual Tackle Leaders

FHSU - Edward Faagai 11 (7 UT/4 AT), Frank Brown 9 (8 UT/1 AT)

NWOSU - Jay Jones 11 (8 UT/3 AT), Pat Koehn 10 (6 UT/4 AT)

## Cameron 37, Fort Hays State 12

LAWTON, OK (Sept. 19) — The Tigers 3-0 lead was short lived when the Aggies responded with the next 16 points and scored an additional 14 points in the third period to earn the win. Cameron ran up 296 yards on the ground while holding FHSU to minus 16 yards rushing. Craig Modellmorg did manage 163 yards passing against the stiff Aggie defense. Tyrone Tracy and Jason Leiker led the offensive threats with four catches for 62 yards and two receptions for 54 yards, respectively. Chuck Smith ran 13 times for 69 yards while quarterback Levon Davis added 65 yards on 13 carries. Jake Brownlow was also effective with three catches for 53 yards. FHSU's only touchdown came on a strange play—Tyrone Tracy was hit at the same time as the ball arrived from Modellmorg and Jason Leiker caught the deflection for a 47-yard score.

Score by Quarters	1	2	3	4	Final
Fort Hays State	3	3	0	6	12
Cameron	7	9	14	7	37

FHSU	- Tom Odle field goal - 12:25/1st
CU	- Chuck Smith 2 run (Dawson kick) - 3:14/1st
CU	- Smith 2 run (Dawson kick) - 14:35/2nd
CU	- Craig Modellmorg tackled for safety - 12:58/2nd
FHSU	- Odle 22 field goal - 8:30/2nd
CU	- Roosevelt Gamble 12 run (Dawson kick) - 6:12/3rd
CU	- Jake Brownlow 20 pass from Gamble (Dawson kick) - 0:00/3rd
CU	- Bobby Ellis 12 pass from Gamble (Dawson kick) - 11:02/4th
FHSU	- Jason Leiker 47 pass from Modellmorg (Schroeder kick failed) - 8:45/4th

Game Stats	FHSU	CU
First Downs	10	20
Rushes-Yards	31-(-16)	53-296
Passing Yards	163	73
Passing	13-33-1	6-18-2
Total Offense	147	369
Punts-Avg	10-29.1	5-37.8
Fumbles-Lost	2-1	6-2
Penalties-Yds	5-60	13-96

### Individual Rushing Leaders

FHSU - David Lemons 6-11

CU - Chuck Smith 13-69, Levon Davis 13-65

### Individual Passing Leaders

FHSU - Craig Modellmorg 13-33-163-1

CU - Roosevelt Gamble 4-11-44-0, Levon Davis 2-7-29-2

### Individual Receiving Leaders

FHSU - Tyrone Tracy 4-62, Jason Leiker 2-54

CU - Brownlow 3-53

#### Individual Tackle Leaders

FHSU	- Frank Brown 10 (5 UT/5 AT), Greg Woodward 8 (6 UT/2 AT)
CU	- Pat Hartline 6 (6 UT), John Tenison 6 (5 UT/1 AT)

### Kearney State 44, Fort Hays State 7

HAYS (Sept. 26) — Kearney State and especially Travis Parker used the wind to its advantage in the first quarter for three field goals, including a new record 56-yard make. The Lopers coasted after two late second quarter scores put them up 23-7 at the half. Mark Voss was excellent for Kearney State with three runs for touchdowns and also added an 18-yard TD pass from his quarterback position. Once again, Tyrone Tracy was called on to carry the Tiger attack. Tracy caught six passes for 114 yards, including a 70-yard score. Craig Modellmog completed 20 of 36 passes for 244 yards, but three interceptions put the damper on an otherwise good performance.

Score by Quarters	1	2	3	4	Final
Kearney State	9	14	21	0	44
Fort Hays State	0	7	0	0	7

KSC	- Travis Parker 26 field goal - 9:24/1st
KSC	- Parker 56 field goal - 6:08/1st
KSC	- Parker 48 field goal - :01/1st
FHSU	- Tyrone Tracy 70 pass from Craig Modellmog (Schroeder kick) - 14:00/2nd
KSC	- Jeff Norblade 77 interception return (Parker kick) - 8:41/2nd
KSC	- Mark Voss 1 run (Parker kick) - 3:58/2nd
KSC	- Voss 1 run (Parker kick) - 11:42/3rd
KSC	- Voss 1 run (Parker kick) - 3:44/3rd
KSC	- Herman Fuller 18 pass from Voss (Parker kick) - 1:08/3rd

Game Stats	KSC	FHSU
First Downs	19	12
Rushes-Yards	59-236	29-52
Passing Yards	131	244
Passing	7-13-0	20-36-3
Total Offense	367	287
Punts-Avg	1-37.0	8-32.6
Fumbles-Lost	2-1	1-1
Penalties-Yds	7-71	13-98

#### Individual Rushing Leaders

FHSU	- Tim Winter 8-23
KSC	- Trevor Pavich 20-89

#### Individual Passing Leaders

FHSU	- Craig Modellmog 20-36-244-3
KSC	- Mark Voss 5-10-106-0

#### Individual Receiving Leaders

FHSU	- Tyrone Tracy 6-114, Eric Busenbark 9-66
KSC	- Paul Reilly 2-65, Ryan Sis 2-23

#### Individual Tackle Leaders

FHSU	- Kurt Dinkel 11 (11 AT), Brian Stindt 10 (5 UT/5 AT)
KSC	- Jeff Kathol 15 (8 AT/7 UT), Todd Trantski 9 (5 UT/4 AT)

### Missouri Southern 38

#### Fort Hays State 13

JOPLIN, MO (Oct. 3) — John Vincent and company could not find a way to stop the option offense of Missouri Southern which proved to be the difference in the contest. FHSU stayed close in the first half despite the Lions 225 yards on the ground. Southern's quarterback, Addie Gaddis, accounted for 232 yards of its 400 yards rushing and three runs for touchdowns of 51, three and seven. The Tigers established a balanced attack of both run and pass, but five turnovers disrupted the offensive flow. Tyrone Tracy had another superb outing with six catches for 119 yards and contributed to the rushing attack with 54 yards. Tim Winter also made his presence felt for the first time with 75 rushes in 18 attempts.

Score by Quarters	1	2	3	4	Final
Fort Hays State	7	6	0	0	13
Missouri Southern	14	0	9	15	38

MSSC	- Addie Gaddis 51 run (Thaman kick) - 13:30/1st
FHSU	- Tyrone Tracy 1 run (Schroeder kick) - 8:45/1st
MSSC	- Gaddis 3 run (Thaman kick) - 3:32/1st
FHSU	- Schroeder 29 field goal - 14:47/2nd
FHSU	- Schroeder 31 field goal - :04/2nd
MSSC	- Doug Ray downed ball for safety - 3:32/3rd
MSSC	- Gaddis 7 run (Thaman kick) - 1:25/3rd
MSSC	- Brian Deem 1 run (Jerome Stone run) - 8:09/4th
MSSC	- Deem 2 run (Thaman kick) - 6:13/4th

Game Stats	FHSU	MSSC
First Downs	17	18
Rushes-Yards	46-81	57-400
Passing Yards	188	48
Passing	12-33-2	1-6-1
Total Offense	269	448
Punts-Avg	4-26.5	3-27.3
Fumbles-Lost	5-3	6-3
Penalties-Yds	7-46	10-63

#### Individual Rushing Leaders

FHSU	- Tim Winter 18-75, Tyrone Tracy 10-54
MSSC	- Addie Gaddis 19-232, Brian Deem 9-84

#### Individual Passing Leaders

FHSU	- Craig Modellmog 12-31-188-2
MSSC	- Addie Gaddis 1-2-48-0

#### Individual Receiving Leaders

FHSU	- Tyrone Tracy 6-119, Kenny Faulkner 3-38
MSSC	- Donley Hurd 1-48

#### Individual Tackle Leaders

FHSU	- Stindt, Trail, Trowell, Dinkel, all had 6
MSSC	- Don Stone 14 (10 UT/4 AT)

### Fort Hays State 29, Wayne State 24

HAYS (Oct. 10) — A homecoming crowd of over 6,000 were treated to an exciting ending that saw the Tigers score two touchdowns in the final two minutes to win 29-24. Split end Dean Tenbrink scored the game winner with :57 seconds remaining on a 33-yard pass from Craig Modellmog. That play followed a perfectly executed onside kick by Tom Odle with Jeff Sullivan making a spectacular play to recover the football down the sideline. Tyrone Tracy scored just before the onside kick to complete a 20-yard, five play drive. Wayne State had given FHSU the ball at the 20 after a bad snap on a punt attempt went for a 19-yard loss. Statistically, the Tigers had outplayed the Wildcats throughout the contest. The FHSU offense ran up 421 yards in total offense with 307 coming by way of the pass.

Score by Quarters	1	2	3	4	Final
Wayne State	0	10	14	0	24
Fort Hays State	10	0	6	13	29

FHSU	- Steve Schroeder 26 field goal - 9:17/1st
FHSU	- Tim Winter 2 run (Schroeder kick) - 5:01/1st
WSC	- Tony Wiese 27 field goal - 14:08/2nd
WSC	- Darryl Mountain 10 pass from Scott Raue (Wiese kick) - :10/2nd
WSC	- Darris Fulford 24 pass from Raue (Wiese kick) - 8:41/3rd
FHSU	- Tyrone Tracy 36 pass from Craig Modellmog (Schroeder kick failed) - 7:04/3rd
WSC	- Damon Ross 1 run (Wiese kick) - 3:34/3rd
FHSU	- Tracy 1 run (Modellmog run failed) - 1:24/4th
FHSU	- Dean Tenbrink 33 pass from Modellmog (Odele kick) - :57/4th

Game Stats	WSC	FHSU
First Downs	17	20
Rushes-Yards	39-141	43-114
Passing Yards	157	314
Passing	12-33-0	23-35-1
Total Offense	298	428
Punts-Avg	5-36.6	5-28.6
Fumbles-Lost	2-1	1-0
Penalties-Yds	9-76	11-106

#### Individual Rushing Leaders

FHSU	- Tim Winter 14-69, Tyrone Tracy 16-60
WSC	- Damon Ross 26-150

#### Individual Passing Leaders

FHSU	- Craig Modellmog 22-24-314-1
WSC	- Scott Raue 12-33-157-0

#### Individual Receiving Leaders

FHSU	- Tyrone Tracy 5-85, Dean Tenbrink 5-84
WSC	- Brian Jepsen 7-101





# 1987 In Review

## Individual Tackle Leaders

FHSU	- Kurt Dinkel 14 (6 UT/8 AT)
WSC	- Bud Sachs 14 (10 UT/4 AT), Mark Volf 12 (5 UT/7 AT)

## Pittsburg State 62, Fort Hays State 13

HAYS (Oct. 17) — Pittsburg State racked up the yardage and the score en-route to a rout of the Tigers. Gorilla quarterback Gene Stegeman ran for 98 yards and four touchdowns. Pittsburg State also got excellent rushing from Mike Meek (10-114), Monte Weathers (17-97) and Kenny Vernon (6-94) for a total of 590 yards on the ground. FHSU stayed close in the first period of play when Tyrone Tracy scored to cut an early Gorilla lead to 12-6. Pittsburg State responded with a 22-point second quarter to put the game away. Tracy was the only bright spot for the Tigers with eight catches for 124 yards and a touchdown receiving. He also rushed nine times for 13 yards and another score.

Score by Quarters	1	2	3	4	Final
Pittsburg State	12	22	14	14	62
Fort Hays State	6	0	7	0	13

PSU	- Monte Weathers 11 run (Bowman kick blocked) -10:22/1st
PSU	- Gene Stegeman 27 run (Stegeman pass failed) -9:01/1st
FHSU	- Tyrone Tracy 1 run (Odle kick) -40:1st
PSU	- Stegeman 43 run (Don Minor pass from Stegeman) -11:58/2nd
PSU	- Stegeman 5 run (Bowman kick) -3:50/2nd
PSU	- Weathers 17 run (Bowman kick) -2:04/2nd
PSU	- Stegeman 1 run (Bowman kick) -10:27/3rd
PSU	- Kenny Davis 4 run (Bowman kick) -2:25/3rd
FHSU	- Tracy 15 pass from Modellmog (Schroeder kick) -15:3rd
PSU	- Kelly Lawson 4 run (Bowman kick) -6:49/4th
PSU	- Kenny Vernon 68 run (Bowman kick) -4:42/4th

Game Stats	PSU	FHSU
First Downs	29	8
Rushes-Yards	72-590	28-(21)
Passing Yards	25	184
Passing	3-6-0	15-33-0
Total Offense	615	163
Punts-Avg	2-37.0	12-31.9
Fumbles-Lost	4-4	1-1
Penalties-Yds	4-44	4-35

## Individual Rushing Leaders

FHSU	- Tim Winter 6-14
PSU	- Mike Meek 10-114, Gene Stegeman 11-98

## Individual Passing Leaders

FHSU	- Craig Modellmog 12-30-176-0
PSU	- Gene Stegeman 2-5-10-0

## Individual Receiving Leaders

FHSU	- Tyrone Tracy 8-124
PSU	- Steve Ginavan 1-12, Jody Truit 1-12

## Individual Tackle Leaders

FHSU	- Kurt Dinkel 11 (8 UT/3 AT), Dusty Trail 9 (7 UT/2 AT)
PSU	- Kurt Thompson 10 (3 UT/7 AT), Donnie Johnson 9 (7 UT/2 AT)

## Fort Hays State 23 Missouri Western 17

ST. JOSEPH, MO (Oct. 24) — It was a seesaw affair which was nearly decided by Fort Hays State's inability to keep a handle on the ball. The Tigers suffered a pass interception and a fumble on their first two possessions of the game. FHSU had a total of three interceptions and three fumbles lost in the contest. It was a turnover that proved to be the turning point of the game and fortunately for the Tigers it belonged to the Griffons. Dusty Trail intercepted a Rob Vanderlinden pass inside the 10 and returned it to the Missouri Western four yard line. Two plays later Tim Winter scored the go ahead, and eventual game winning, touchdown for FHSU on a 2-yard run. Winter with 65 yards rushing on 21 carries and Tyrone Tracy with five catches for 66 yards proved to be a valuable one-two punch for the Tigers.

Score by Quarters	1	2	3	4	Final
Fort Hays State	0	7	14	2	23
Missouri Western	0	10	7	0	17

FHSU	- Tyrone Tracy 2 run (Schroeder kick) - 11:59/2nd
MWSC	- Scott Ussery 7 pass from Rob Vanderlinden (Wolfe kick) - 6:19/2nd
MWSC	- Bill Wolfe 36 field goal - 1:45/2nd
FHSU	- Tracy 26 pass from Craig Modellmog (Schroeder kick failed) - 13:14/3rd
MWSC	- Alvin Jones recovers blocked punt (Wolfe kick) - 11:01/3rd
FHSU	- Tim Winter 2 run (David Lemons pass from Modellmog) - 1:46/3rd
FHSU	- Doug Blank blocks punt for safety - 6:34/4th

Game Stats	FHSU	MWSC
First Downs	23	10
Rushes-Yards	49-95	34-45
Passing Yards	231	179
Passing	18-44-3	17-35-2
Total Offense	326	224
Punts-Avg	5-24.0	6-34.5
Fumbles-Lost	5-3	1-1
Penalties-Yds	5-55	5-40

## Individual Rushing Leaders

FHSU	- Tim Winter 21-65, Tyrone Tracy 18-48
MWSC	- Pat Eckhardt 14-31

## Individual Passing Leaders

FHSU	- Craig Modellmog 18-44-231-2
MWSC	- Rob Vanderlinden 17-35-179-2

## Individual Receiving Leaders

FHSU	- Tyrone Tracy 5-66, Jerald Demery 3-44
MWSC	- Eric Hoskins 5-66, Travis Burris 2-37

## Individual Tackle Leaders

FHSU	- Edmund Faagali, Trail, Dinkel, Brown all with 6
MWSC	- Mark Bodicky and Brian Casey both with 13

## Fort Hays State 40, Emporia State 20

HAYS (Oct. 31) — It was Tyrone Tracy's day to shine, as if he hadn't all of the '87 season. The sophomore slotback scored a FHSU record five touchdowns to propel the Tigers to an upset victory over Emporia State. Both squads had success when they had the ball amassing 744 yards in combined total offense. The Hornets ran for 147 and passed for 214 yards. Aubrey Dunlap rushed for 139 yards on 34 carries and scored a touchdown. FHSU was equally proficient at both aspects of the game with 105 yards rushing and 278 passing. Tracy was the major difference with his nose for the endzone. He caught six balls for 147 yards and TD receptions of 53 and five while rushing 10 times for 46 yards and rushing scores of two, 12 and one.

Score by Quarters	1	2	3	4	Final
Emporia State	8	0	6	6	20
Fort Hays State	7	20	0	13	40

ESU	- Preston Pearson 13 run (Darren Johnson pass from Pearson) - 12:33/1st
FHSU	- Tyrone Tracy 2 run (Schroeder kick) - 3:06/1st
FHSU	- Tracy 12 run (Kenny Crandall run failed) - 9:47/2nd
FHSU	- Tracy 53 pass from Craig Modellmog (Doug Ray pass from Modellmog) - 4:13/2nd
FHSU	- Tracy 5 pass from Modellmog (Tracy run failed) -10:6/2nd
ESU	- Aubrey Dunlap 2 run (Pearson pass failed) - 1:12/3rd
ESU	- Pearson 1 run (Pearson run failed) - 13:29/4th
FHSU	- Tracy 1 run (Modellmog run failed) - 10:36/4th
FHSU	- David Lemons 1 run (Odle kick) - 1:53/4th

Game Stats	ESU	FHSU
First Downs	16	21
Rushes-Yards	50-147	43-105
Passing Yards	214	278
Passing	11-22-0	16-30-1
Total Offense	361	383
Punts-Avg	4-39.8	7-32.9
Fumbles-Lost	4-2	1-1
Penalties-Yds	7-59	8-61

## Individual Rushing Leaders

FHSU	- Tim Winter 21-72, Tyrone Tracy 10-46
ESU	- Aubrey Dunlap 34-139

**Individual Passing Leaders**

FHSU - Craig Modellmog 16-30-278-1

ESU - Preston Pearson 11-21-214-0

**Individual Receiving Leaders**

FHSU - Tyrone Tracy 6-147, Kenny Faulkner 3-30

ESU - Darrin Johnson 5-94, Terry White 3-94

**Individual Tackle Leaders**

FHSU - Steve Heft 10 (9 UT/1 AT), Edmund Faagai 10 (4

UT/6 AT)

ESU - Mark Rowe 13 (7 UT/6 AT), three with nine tackles

**Washburn 49, Fort Hays State 12**

TOPEKA, KS (Nov. 7) — It will go into the record books as a win for Fort Hays State, but it was far less than that on the field. Washburn forfeited all of its '87 wins following the end of the season when it was detected that an ineligible player had played in all 11 games. Everything turned to gold for the Icabods on a bright fall day which marked the season finale for FHSU. The Tigers' troubles started when quarterback Craig Modellmog was injured on the first series with a shoulder separation. Replacement Mike Socci, a true freshman, got an introduction to CSIC football that he will long remember. Socci was intercepted five times and completed only 12 of 37 passes. Washburn ripped the FHSU defense for 238 yards passing and 220 yards rushing in the game. The Icabods rode a 28-point first quarter to the big victory.

Score by Quarters	1	2	3	4	Final
Fort Hays State	0	0	6	6	12
Washburn	28	7	7	7	49

WU - Les Williams 11 run (Barber kick failed) - 8:49/1st

WU - Ken Schmanke 10 run (Kingston pass failed) - 6:41/1st

WU - Dashiell Wandix 52 run (Kingston run) - 4:30/1st

WU - Troy Slusser 42 pass from Kyle Kingston (Slusser pass from Kingston) - :22/1st

WU - Slusser 14 pass from Kingston (Barber kick) - :44/2nd

FHSU - Tracy 3 run (Socci pass failed) - 11:03/3rd

WU - Wandix 1 run (Barber kick) - 1:05/3rd

FHSU - Tracy 8 run (Socci pass failed) - 9:45/4th

WU - Scott Crimmins 23 run (Barber kick) - 5:25/4th

Game Stats	FHSU	WU
First Downs	15	21
Rushes-Yards	44-115	43-220
Passing Yards	102	238
Passing	12-37-5	15-27-1
Total Offense	217	458
Punts-Avg	7-32.8	6-36.6
Fumbles-Lost	3-2	2-0
Penalties-Yds	5-45	12-95

**Individual Rushing Leaders**

FHSU - Tim Winter 16-49, David Lemons 3-36

WU - Dashiell Wandix 13-83, Les Williams 11-58

**Individual Passing Leaders**

FHSU - Mike Socci 12-37-102-5

WU - Kyle Kingston 15-25-238-1

**Individual Receiving Leaders**

FHSU - Eric Busenbark 5-47

WU - Troy Slusser 6-115, Ken Schmanke 3-51

**Individual Tackle Leaders**

FHSU - Kurt Dinkel 11 (8 UT/3 AT), Duane Charbonneau 8

(6 UT/2 AT)

WU - Luke Lovejoy 10 (8 UT/2 AT), Bruce Mellen 10 (7 UT/3 AT)

**Team Single Game Highs and Lows**

Category	High	Low
Points Scored	55 vs. LU	7 vs. KSC
First Downs	23 vs. LU and MWSC	8 vs. NWOSU and PSU
By Rushing	14 vs. LU	0 vs. PSU
By Passing	12 vs. MWSC	5 vs. NWOSU
By Penalty	4 vs. WU	0 vs. LU KSC and PSU
Rushing Yardage	317 vs. LU	-21 vs. PSU
Rushing Attempts	52 vs. LU	28 vs. PSU
Passing Yardage	314 vs. WSC	163 vs. CU
Passes Attempted	44 vs. MWSC	27 vs. NWOSU
Passes Completed	23 vs. WSC	12 vs. NWOSU
Passes Had Intercepted	5 vs. WU	0 vs. PSU
Total Offense	505 vs. LU	147 vs. CU
Total Plays	93 vs. MWSC	59 vs. NWOSU
Fumbles	7 vs. LU	1 vs. KSC PSU and ESU
Fumbles Lost	4 vs. LU	0 vs. NWOSU
Penalties	13 vs. KSC	4 vs. PSU
Yards Penalized	106 vs. WSC	35 vs. PSU





## 1987 Final Standings Central States Intercollegiate Conference

School	Conference	Overall
Pittsburg State	7- 0- 0	11- 1- 0
Emporia State	5- 2- 0	8- 3- 0*
Kearney State	5- 2- 0	5- 4- 0*
<b>Fort Hays State</b>	<b>4- 3- 0</b>	<b>5- 5- 0*</b>
Missouri Southern	3- 4- 0	3- 7- 0
Wayne State	2- 4- 1	2- 7- 1*
Missouri Western	1- 5- 1	2- 8- 1*
Washburn	0- 7- 0	0-11- 0

\* denotes teams awarded forfeit by Washburn for using an ineligible player.

## All-Conference Squads

### First Team

### Second Team

#### Offense

Pos.	Player	Class	School
QB	Gene Stegeman	Sr.	PSU
RB	Aubrey Dunlap	Jr.	ESU
	Mike Meek	Jr.	PSU
	Monty Weathers	Sr.	PSU
WR	Darren Johnson	Sr.	ESU
	<b>Tyrone Tracy</b>	<b>So.</b>	<b>FHSU</b>
TE	Blaise Bauer	Jr.	PSU
OL	Tom Bartusiak	Sr.	KSC
	Jon Beal	Sr.	PSU
	Mike Gibson	Sr.	WU
	Clifford Hodrick	Jr.	ESU
	Jesse Wall	Jr.	PSU
PK	Mike Bowman	Sr.	PSU

Pos.	Player	Class	School
QB	Kyle Kingston	Sr.	WU
RB	Mike DeNapoli	Sr.	ESU
	Damond Ross	Fr.	WSC
	Kevin Trosper	Sr.	KSC
WR	Eric Hoskins	Sr.	MWSC
	Troy Slusser	Jr.	WU
TE	Paul Reilly	Jr.	KSC
OL	Mike Anderson	Sr.	WSC
	Mike Fitzwater	Sr.	WU
	Dan Porter	Sr.	MSSC
	Steve Sheehan	Jr.	WU
	Rick Tyson	Jr.	PSU
PK	David Thaman	Jr.	MSSC

#### Defense

Pos.	Player	Class	School
DL	Troy Adams	Sr.	PSU
	Mark Buckner	Jr.	ESU
	Jim Butler	Sr.	WU
	Bob Schaller	Sr.	PSU
	Dave Uhlers	Sr.	WSC
LB	Troy Stedman	Sr.	WU
	Don Stone	Sr.	MSSC
	Kurt Thompson	Sr.	PSU
DB	Danny Massey	Sr.	MSSC
	Jeff Norblade	Sr.	KSC
	Bryan Simoncio	Sr.	PSU
	Mark Volf	Jr.	WSC
P	Bryan Timmermeyer	Sr.	MWSC

Pos.	Player	Class	School
DL	Charlie Bennett	Jr.	WU
	Mike King	Jr.	MSSC
	Brett Potts	So.	PSU
	Mitch Stoltenberg	Sr.	KSC
	Lloyd Vaughn	Sr.	MSSC
LB	Randy Darby	Sr.	MSSC
	Chris McCartney	Sr.	ESU
	Mark Rowe	Sr.	ESU
	Todd Suey	Jr.	KSC
DB	Ted Adams	So.	PSU
	Donnie Johnson	Jr.	PSU
	Rodney Shepherd	Sr.	MSSC
	Kevin Strotkamp	Jr.	ESU
P	Tim Beasley	Sr.	WU

Return Specialist: Troy Slusser, Jr., WU

Coach-of-the-Year: Dennis Franchione, Pittsburg State



# Coaching Records

## All-Time Coaching Records

Years	Coach	Record	Win Pct.
1913-14	Ira Van Cleave	9- 3- 0	.750
1915-18	W.G. Speer	18- 5- 0	.783
1919	A.J. Robertson	3- 6- 0	.333
1920-22	George Woodward	10-10- 2	.500
1923-28	Bill Weidlein	19-24- 6	.449
1929	Andrew Schoeppel	2- 5- 0	.286
1930-34	Jack Riley	21-19- 6	.522
1935	Jim Yeager	8- 2- 0	.800
1936-41	Paul Waldorf	25-21- 8	.537
1942	Bill Bearly	1- 8- 0	.111
1943-45	WORLD WAR II	NO TEAMS	
1946-55	Ralph Huffman	41-37-10	.523
1956-68	Wayne McConnell	49-62- 4	.443
1969-71	Tom Stromgren	7-21- 1	.257
1972-78	Bill Giles	24-44- 3	.359
1979-80, '84	Bobby Thompson	9-20- 2	.452
1981-83	Jim Gilstrap	20-11- 1	.641
1985-Present	John Vincent	16-13- 1	.550
1913-Present	17 Coaches	282-311-44	.477

## Coaches Ranked By Wins

Coach	Years	Wins
Wayne McConnell	1956-68	49
Ralph Huffman	1946-55	41
Paul Waldorf	1936-41	25
Bill Giles	1972-78	24
Jack Riley	1930-34	21
Jim Gilstrap	1981-83	20
Bill Weidlein	1923-28	19
W.G. Speer	1915-18	18
John Vincent	1985-Present	16
George Woodward	1920-22	10
Ira Van Cleave	1913-14	9
Bobby Thompson	1978-80, '84	9
Jim Yeager	1935	8
Tom Stromgren	1969-71	7
A.J. Robertson	1919	3
Andrew Schoeppel	1929	2
Bill Bearly	1942	1
TOTALS	1913-Present	282





# Tiger Honor Roll

(We have made an effort to tabulate a list of Fort Hays State football players who have made All-America, Academic All-America, All-District 10, and All-Central States Intercollegiate Conference. Any additions or corrections to the below-listed names will be appreciated.)

## All-America

- 1962 DB-Dave Parker, Tonganoxie, KS, NAIA (1st)
- 1963 DB-Dave Parker, Tonganoxie, KS, AP Little (HM)
- 1963 LB-Dave Jones, Dodge City, KS, NAIA (2nd) and AP Little (2nd)
- DT-Ken Dreiling, Victoria, KS, NAIA (HM)
- 1966 QB-Bob Johnson, Logan, KS, NAIA (HM) and AP Little (HM)
- 1970 TB-Tommy Evans, Plattsburg, MO, NAIA (HM) and AP Little (HM)
- LB-Roy Humphrey, Garden City, KS, Kodak (2nd)
- 1971 SE-John Woodworth, Halstead, KS, NAIA (HM)
- 1973 TB-Steve Crosby, Pawnee Rock, KS, AP Little (HM)
- 1975 FB-Tom Doll, Claflin, KS, NAIA (HM) and AP Little (HM)
- SE-Ron Hawley, Phillipsburg, KS, NAIA (HM)
- LB-Chris Cullen, Pueblo, CO, NAIA (HM)
- 1976 QB-Skip Numrich, Scott City, KS, NAIA (HM) and AP Little (HM)
- 1980 LB-Junior Hartig, Ellinwood, KS, NAIA (HM)
- 1982 TE-Tony Workman, Goodland, KS, NAIA (1st)
- DB-Ron Johnson, Concordia, KS, NAIA (HM)
- 1983 LB-Chris Honas, Ellis, KS, NAIA (HM)
- QB-Robert Long, Macon, MO, NAIA (HM)
- 1985 QB-Robert Long, Macon, MO, NAIA (1st)
- SB-Eric Busenbark, Larned, KS, NAIA (1st)
- 1986 DT-Les Miller, Arkansas City, KS, NAIA (HM)
- 1987 SB-Tyrone Tracy, Indianapolis, IN, NAIA (HM)

## Academic All-America

- 1975 QB-Greg Custer, Quinter, KS, CoSIDA
- 1985 DE-Paul Nelson, WaKeeney, KS, CoSIDA (1st)
- 1986 DE-Paul Nelson, WaKeeney, KS, CoSIDA (1st) and NAIA

## All-District 10

(First Team selections only)

- 1964 LB-Dave Jones, Dodge City, KS
- DT-Ken Dreiling, Victoria, KS
- 1966 QB-Bob Johnson, Logan, KS
- OG-Larry Noffsinger, Phillipsburg, KS
- FB-Rich Dreiling, Victoria, KS
- DT-Bernie Blevins, Yates Center, KS
- 1968 FB-Rich Dreiling, Victoria, KS
- LB-Paul Simons, Atchison, KS
- 1969 TB-Tommy Evans, Plattsburg, MO
- 1970 TB-Tommy Evans, Plattsburg, MO
- SE-John Woodworth, Halstead, KS
- C-Mike Butler, Marysville, KS
- OG-Jim Murray, Pittsburgh, PA
- LB-Roy Humphrey, Garden City, KS
- 1971 SE-John Woodworth, Halstead, KS
- PK-Mike Sobba, Wichita, KS
- 1972 SE-John Woodworth, Halstead, KS
- TB-Steve Crosby, Pawnee Rock, KS
- 1973 TB-Steve Crosby, Pawnee Rock, KS
- SE-Ron Hawley, Phillipsburg, KS
- 1974 DB-Steve Simpson, Highland, KS
- 1975 FB-Tom Doll, Claflin, KS
- SE-Ron Hawley, Phillipsburg, KS
- LB-Chris Cullen, Pueblo, CO
- 1976 QB-Skip Numrich, Scott City, KS
- DB-Kent Griffin, Douglas, WY
- 1977 INFORMATION NOT AVAILABLE
- 1978 INFORMATION NOT AVAILABLE
- 1979 LB-Junior Hartig, Ellinwood, KS
- 1980 OL-Mike Norris, Inglewood, CA
- LB-Junior Hartig, Ellinwood, KS
- 1981 TE-Phil Brethower, Bird City, KS
- P-Ron Johnson, Concordia, KS
- 1982 TE-Tony Workman, Goodland, KS
- OL-Richard Lowe, Bovina, TX
- DB-Ron Johnson, Concordia, KS
- OL-Richard Lowe, Bovina, TX
- QB-Robert Long, Macon, MO
- LB-Chris Honas, Ellis, KS
- 1984 WR-Marty Boxberger, Russell, KS
- DB-Pat Poore, Stockton, KS
- 1985 QB-Robert Long, Macon, MO
- SB-Eric Busenbark, Larned, KS
- OT-Greg Hammond, Phoenix, AZ
- 1986 DT-Les Miller, Arkansas City, KS
- SE-Randy Knox, Indianapolis, IN
- OT-Howard Hood, Kerrville, TX
- 1987 SB-Tyrone Tracy, Indianapolis, IN

# All-Central States Intercollegiate Conference

(First and Second Team Selections)

1976	WR-Dave Meter, Gering, NE (1st) C-John Barnard, Great Bend, KS (1st) DL-Jim Homolka, Claflin, KS (1st) DL-Dave Thom, Minden, NE (1st) QB-Skip Numrich, Scott City, KS (2nd) FB-Tom Doll, Claflin, KS (2nd) TE-Chuck Durfee, Ness City, KS (2nd) OL-Mike Carlson, Grant, NE (2nd) DB-Kent Griffin, Douglas, WY (2nd) DB-Mike Mlinar, Norton, KS (2nd)	1981	DB-Ron Johnson, Concordia, KS (1st) WR-Tony Workman, Goodland, KS (2nd) OL-Mike Norris, Inglewood, CA (2nd)
1977	WR-Dave Meter, Gering, NE (1st) DL-Jim Homolka, Claflin, KS (1st) QB-Skip Numrich, Scott City, KS (2nd) LB-Mike Carney, Prairie Village, KS (2nd)	1982	TE-Tony Workman, Goodland, KS (1st) OL-Richard Lowe, Bovina, TX (1st) DB-Ron Johnson, Concordia, KS (1st) PR/KR-James Davis, Cleveland, TX (1st) LB-Chris Honas, Ellis, KS (2nd) OL-Paul Lorenson, Dodge City, KS (2nd) DL-Harold Dumas, Crosby, TX (2nd)
1978	OL-Bob Heider, Pleasanton, NE (1st) FB-Tom Doll, Claflin, KS (1st) DL-Bill Turner, Cozad, NE (1st) DB-Gary Dubois, West Monroe, LA (1st) C-Andy Mattison, Salina, KS (2nd) DE-Justin Marchel, Cimarron, KS (2nd) DB-Terry Pasby, Elk City, OK (2nd)	1983	QB-Robert Long, Macon, MO (1st) WR-Ralph Humphrey, Salina, KS (1st) OL-Richard Lowe, Bovina, TX (1st) LB-Chris Honas, Ellis, KS (1st) DB-Tracy Harris, Roswell, NM (1st) WR-Marty Boxberger, Russell, KS (2nd) OL-Paul Lorenson, Dodge City, KS (2nd) DL-Rusty Cole, Moran, KS (2nd)
1979	QB-Bill Turner, Cozad, NE (1st) QB-Hoskin Hogan, Compton, CA (2nd) TE-Sam Farmer, Russell, KS (2nd) OL-Kent Colwell, Alliance, NE (2nd) DL-Justin Marchel, Cimarron, KS (2nd) LB-Junior Hartig, Ellinwood, KS (2nd)	1984	WR-Marty Boxberger, Russell, KS (1st) DB-Pat Poore, Stockton, KS (1st)
1980	TE-Phil Brethower, Bird City, KS (1st) OL-Mike Norris, Inglewood, CA (1st) LB-Junior Hartig, Ellinwood, KS (1st) P-Todd Dobbs, Phoenix, AZ (1st) OL-Stan Johnson, Hays, KS (2nd) DL-Bob Heider, Pleasanton, NE (2nd) DB-Brad Webb, Protection, KS (2nd)	1985	QB-Robert Long, Macon, MO (1st) RB-Terry Thomas, Jackson, MI (1st) SB-Eric Busenbark, Larned, KS (1st) OL-Greg Hammond, Phoenix, AZ (1st) P-Sam Holloway, Lincoln, KS (1st) WR-Ralph Humphrey, Salina, KS (2nd) OL-Chuck Robison, Apache Jct., AZ (2nd) DL-Sammy Taamilo, Honolulu, HI (2nd) LB-Chris Honas, Ellis, KS (2nd)
		1986	WR-Randy Knox, Indianapolis, IN (1st) DL-Les Miller, Arkansas City, KS (1st) WR-Frankie Neal, Okeechobee, FL (2nd) WR-Kip Stewart, Ontario, CA (2nd)
		1987	SB-Tyrone Tracy, Indianapolis, IN (1st)

## Fort Hays State and the NFL



Frankie Neal

Two former Tiger gridgers had a significant impact on their clubs last season in the National Football League. Frankie Neal, a third-round draft pick of the Green Bay Packers in 1987, played in 12 games. Neal was second on the Packer squad in receiving with 36 catches for 420 yards and three touchdowns. The Okeechobee, Florida, native scored twice against the Kansas City Chiefs in a 23-3 Green Bay win. Les Miller seized the opportunity to play for the San Diego Chargers as a replacement player during the NFL player's strike last season and was able to earn a permanent job with the club following the labor dispute. Miller, who played three seasons at Kansas State before finishing up at FHSU, played defensive tackle for the Chargers. The Arkansas City, KS, native scored a touchdown on a sack and fumble recovery against Kansas City.

Howard Hood and Rod Timmons, both members of the FHSU squad in 1986, made the Atlanta Falcons and Los Angeles Raiders, respectively, as replacement players last season. Neither player was able to secure a spot on a team after the strike.

Steve Crosby was a Tiger from 1971-73 and has also been successful in professional football. Crosby played three seasons for the New York Giants before a knee injury ended his career in 1977. He was selected in the 17th round of the 1974 NFL free agent draft. Since the end of his playing days, Crosby has coached with the Miami Dolphins, Atlanta Falcons, and the Cleveland Browns. Crosby returned to the Falcons in '87 as the quarterback coach.

NFL squads also employ several support personnel who are affiliated with Fort Hays State. Steve Antonopolus was the Tigers' athletic trainer in the mid-70's and is now the head trainer of the Denver Broncos. Antonopolus gave Brad Brown his start in the NFL. Brown is now the head trainer for the Houston Oilers. A native of Norton, KS, Brown was on the FHSU staff from 1978-85 and earned both a bachelor and master's degrees at Fort Hays State.

After five years at the University of Southern California, Jerry Simmons was named Strength and Conditioning Coach for the New England Patriots in a June. Simmons, who hails from Elkhart, KS, is a '77 graduate of FHSU where he was a two-time letterman in football and a member of the Tiger coaching staff in 1978 and 1980.



Les Miller





# History of FHSU Athletic Affiliations

## KANSAS INTERCOLLEGIATE CONFERENCE 1914-1927

### CENTRAL INTERCOLLEGIATE CONFERENCE (CIC) 1928-1968 Founded by

Emporia State	Southwestern College
Fort Hays State	Wichita University
Pittsburg State	College of Emporia
Washburn	

1933 - Washburn withdrew  
1937 - St. Benedict's admitted  
1939 - Collee of Emporia withdrew  
1940 - Wichita withdrew  
- Washburn re-admitted  
1948 - Rockhurst admitted  
1951 - Rockhurst withdrew  
1958 - Southwestern withdrew  
1959 - Omaha admitted  
1963 - St. Benedict's withdrew

## ROCKY MOUNTAIN ATHLETIC CONFERENCE (RMAC) 1969-1972

### PLAINS DIVISION

Emporia State  
Pittsburg State  
FHSU  
Southern Colorado  
Northern Colorado  
Nebraska-Omaha

### MOUNTAIN DIVISION

Adams State  
Southern Utah  
Colorado School of Mines  
Fort Lewis  
New Mexico Highlands  
Regis College  
Western New Mexico  
Western State (CO)  
Westminister (UT)

## GREAT PLAINS ATHLETIC CONFERENCE (GPAC) 1972-1976

Comprised of six former member schools of the old RMAC. The old RMAC was known as the Mountain and Plains Intercollege Atlantic Association with the Plains division being the GPAC and the Mountain Division retaining the RMAC name. Kearney State replaced Nebraska-Omaha.

FHSU  
Washburn  
Emporia State  
Northern Colorado  
Pittsburg

Kearney State  
Southern Colorado

## CENTRAL STATES INTERCOLLEGIATE CONFERENCE (CSIC) 1976-present

FHSU	Missouri Western
Emporia State	Missoufi Southern
Pittsburg State	Kearney State
Washburn	Wayne State



# Series Record vs. All Opponents

School	First Game	Games	Won	Lost	Tie	Last Game
Adams State (CO)	1977	4	3	1	0	1985
Arizona State (Flagstaff)	1938	1	1	0	0	1938
Augustana (SD)	1935	1	1	0	0	1935
Baker University	1917	3	1	2	0	1920
Benedictine College	1934	26	6	17	3	1962
Bethany College	1915	18	10	6	2	1933
Bethel College	1942	1	0	1	0	1942
Cameron (OK)	1987	1	0	1	0	1987
Central Oklahoma	1955	2	0	2	0	1956
Central Missouri	1964	2	2	0	0	1965
Chadron State (NE)	1934	5	5	0	0	1938
College of Emporia	1916	12	8	3	1	1941
Colorado Mines	1946	4	2	2	0	1973
Colorado College	1942	13	3	10	0	1962
Northern Colorado	1940	14	1	12	1	1976
Southern Colorado	1963	16	7	9	0	1978
Colorado Western	1963	2	0	2	0	1964
Denver University	1921	1	0	1	0	1921
Eastern New Mexico	1960	6	2	4	0	1979
<b>Emporia State</b>	1923	61	25	34	2	1987
Fort Lewis College (CO)	1980	2	2	0	0	1981
Friends University	1920	1	0	1	0	1920
Hastings College (NE)	1928	4	2	1	1	1939
Illinois State	1979	1	0	1	0	1979
Kansas State	1919	10	1	8	1	1949
Kansas Wesleyan	1914	25	17	6	2	1953
<b>Kearney State (NE)</b>	1926	40	16	23	1	1987
Langston University (OK)	1979	5	4	1	0	1984
Lincoln University (MO)	1980	6	4	2	0	1987
McPherson College	1921	6	3	3	0	1940
Missouri Southern	1970	18	8	9	1	1987
Missouri Western	1976	12	9	3	0	1987
Nebraska-Omaha	1953	16	3	12	1	1972
New Mexico A & M	1939	2	0	2	0	1948
Northwest Missouri	1950	21	12	8	1	1980
<b>Northwestern Oklahoma</b>	1937	18	5	12	1	1987
Oklahoma Baptist	1935	2	1	1	0	1936
Oklahoma City University	1939	2	0	0	2	1940
Ottawa University	1915	2	2	0	0	1922
Panhandle State (OK)	1933	11	3	7	1	1985
Peru State (NE)	1940	1	0	0	1	1940
<b>Pittsburg State</b>	1926	60	17	35	8	1987
Quincy College (IL)	1950	2	1	1	0	1951
Regis College (CO)	1942	1	1	0	0	1942
Rockhurst (MO)	1948	2	1	1	0	1949
St. Mary of the Plains	1981	2	2	0	0	1982
Southwestern College	1917	32	20	7	5	1959
Southwest Missouri	1954	2	2	0	0	1955
Sterline College	1913	15	9	4	2	1941
Wichita University	1915	18	6	11	1	1939
<b>Washburn University</b>	1928	53	18	32	3	1987
<b>Wayne State (NE)</b>	1977	11	5	5	1	1987





# Year-by-Year Scores

## Year-by-Year Scores

1902 (school founded) -1912

Indications of some football activity, but no official records available.

## 1913 (4-1-0) Hays Normal\*

Oakley High School	96-0
Oberlin High School	35-3
Norton High School	33-6
• Cooper College	0-23
Salina "All Stars"	125-7

\*Officially Fort Hays Kansas Normal School

•Now Sterling College

## \*1914 (5-2-0)

Luray High School	46-0
Kansas Wesleyan Univ.	0-13
Plainville High School	33-0
Codell High School	52-7
Cooper College	0-7
Kansas Wesleyan Univ.	16-7
Cooper College	33-7

\*Admitted to Kansas Conference, first conference alignment.

## 1915 (4-3-0)

• Fairmount College	6-20
Bethany College	25-27
Haskell Inst. Reserves	9-0
Kansas Wesleyan Univ.	6-20
St. Mary's College	16-0
Bethany College	6-0
Ottawa University	6-0

•Now Wichita State University

## 1916 (5-1-0)

Haskell Institute	7-27
Kansas Wesleyan Univ.	20-0
College of Emporia	13-12
Bethany College	8-6
St. Mary's College	14-3
Haskell Inst. Reserves	33-0

## 1917 (7-0-0)

Southwestern College	23-20
Baker University	7-0
St. Mary's College	8-0
Haskell Inst. Reserves	28-7
Bethany College	3-0
Kansas Wesleyan Univ.	38-0
Cooper College	33-0

Kansas Conference Championship; first in history of school.

## 1918 (2-1-0)

Fort Riley Medics	0-33
Bethany College	21-6
Camp Funston	28-0

## 1919 (3-6-0)

Southwestern College	0-10
Camp Funston	0-3
Baker University	7-17
• Kansas State College	0-12
St. Mary's College	0-7
Cooper College	14-6
Bethany College	21-0
Kansas Wesleyan Univ.	26-0
Washburn University	6-7

•Now Kansas State University

## 1920 (2-5-1)

Kansas State	0-14
Friends University	0-7
Haskell Institute	6-33
St. Mary's College	14-26
Kansas Wesleyan Univ.	41-0
Baker University	0-21
Bethany College	7-7
Sterling College	40-0

## 1921 (6-1-0)

Denver University	7-41
McPherson College	32-0
Kansas Wesleyan Univ.	18-0
St. Mary's College	14-7
Bethany College	7-0
Southwestern College	14-7
Sterling College	7-0

Kansas Conference Championship

## 1922 (2-4-1)

Ottawa University	18-13
McPherson College	14-16
Kansas Wesleyan Univ.	3-0
St. Mary's College	0-21
Bethany College	0-7
College of Emporia	3-3
Fairmount College	0-7

## 1923 (4-3-2) KSTC\*

St. John's College	49-6
Emporia State	3-26
McPherson College	0-7
Kansas Wesleyan Univ.	3-3
St. Mary's College	7-6
Bethany College	20-0
College of Emporia	12-10
Fairmount College	0-20
Sterling College	0-0

\*Name changed to Kansas State Teachers College at Hays in 1923.

## 1924 (4-4-0)

St. John's College	28-6
Emporia State	2-19
McPherson College	0-20
Kansas Wesleyan Univ.	13-3
St. Mary's College	0-6
Bethany College	6-14
Fairmount College	13-7
Sterling College	9-6

## 1925 (2-4-1)

St. John's College	25-0
Emporia State	3-13
Pittsburg State	0-6
St. Mary's College	6-7
Bethany College	0-16
Fairmount College	0-0
Sterling College	3-0

## 1926 (3-5-0)

Kearney (NE) State	53-0
Emporia State	0-14
Sterling College	0-3
St. Mary's College	13-9
Bethany College	0-11
Kansas Wesleyan Univ.	14-9
Fairmount College	0-7
Pittsburg State	0-7

## 1927 (3-5-1)

Kansas State	6-30
Kearney (NE) State	25-6
Emporia State	0-26
Sterling College	14-0
St. Mary's College	6-0
Bethany College	6-6
Kansas Wesleyan Univ.	0-17
Bethany College	0-20
Pittsburg State	7-13

## \*1928 (3-3-2)

Hastings College (NE)	0-0
Kansas State	7-21
Emporia State	0-34
Southwestern College	0-0
Wichita University	7-0
College of Emporia	0-33
Washburn University	6-2
Pittsburg State	6-0

\*Member of new conference, Central Intercollegiate Conference.

## \*1929 (2-5-0)

Hastings College	0-3
Emporia State	0-6
Pittsburg State	0-12
College of Emporia	6-7
Wichita University	13-0
Southwestern College	19-6
Washburn University	0-26

\*Coach was Andrew F. Schoepel, then a lawyer at Ness City, KS., and later a U.S. Senator from Kansas for many years (died 1962).

## 1930 (2-5-2)

Sterling College	7-13
Emporia State	0-0
Hastings College (NE)	6-0
Pittsburg State	0-14
College of Emporia	14-0
Wichita University	0-14
Kansas Wesleyan Univ.	0-0
Washburn University	7-33
Southwestern College	0-21

## \*1931 (3-5-1)

Kearney (NE) State	0-2
Emporia State	0-26
Washburn University	6-27
College of Emporia	3-0
McPherson College	6-2
Southwestern College	0-0
Bethany College	6-0
Pittsburg State	6-13
Wichita University	0-61

\*Changed to Fort Hays Kansas State College

## 1932 (4-5-0)

Colorado State (Greeley)	0-7
Bethany College	13-0
Emporia State	13-0
Washburn University	0-13
Wichita University	3-19
College of Emporia	0-6
Kearney (NE) State	19-0
Southwestern College	10-0
Pittsburg State	0-13

# 1933 (6-2-2)

Wichita University	9-13
Emporia State	15- 6
Pittsburg State	0- 0
Southwestern College	19-15
Bethany College	19- 0
Panhandle A&M (OK)	33- 0
College of Emporia	9- 6
Washburn University	0- 0
Kearney (NE) State	41- 0
Kansas Wesleyan Univ.	0-21

# 1934 (6-2-1)

Kansas State	0-13
Emporia State	15- 0
Chadron (NE) State	16- 0
Wichita University	12- 7
St. Benedict's	6- 6
Pittsburg State	0-19
Washburn University	23-12
Southwestern College	19- 7
Kansas Wesleyan Univ.	41- 0

Central Intercollegiate Conference  
Championship - first since joining new  
conference.

# 1935 (8-2-0)

Augustana (SD)	34- 6
Chadron (NE) State	26- 0
Kansas State	3- 0
* Emporia State	1- 0
Wichita University	34- 6
St. Benedict's	0-18
Southwestern College	20- 0
Pittsburg State	0-21
Washburn University	12- 6
Oklahoma Baptist	42- 0

Tied for Central Intercollegiate Conference  
Championship with Pittsburg  
State and Wichita University.

\*Forfeit: Emporia State used ineligible  
player.

# 1936 (6-3-0)

Kansas State	0-13
Chadron (NE) State	32- 7
Southwestern College	25- 0
Wichita University	14- 0
St. Benedict's	12-27
Emporia State	15- 7
Haskell Institute	13- 0
Pittsburg State	23- 0
Oklahoma Baptist	6-10

Central Intercollegiate Conference  
Championship

# 1937 (6-2-1)

Northwestern Oklahoma	21- 6
Chadron (NE) State	7- 0
Southwestern College	28- 0
Southwestern Oklahoma	12- 7
Pittsburg State	13- 6
Emporia State	6-14
St. Benedict's	7- 7
College of Emporia	7- 3
Wichita University	0-13

# 1938 (7-2-0)

Chadron (NE) State	21- 0
St. Benedict's	14-19
Arizona State (Flagstaff)	20-19
College of Emporia	20- 0
Emporia State	14- 0
Kearney (NE) State	38- 6
Wichita University	7-15
Pittsburg State	19- 6
Southwestern College	28- 0

# 1939 (2-5-2)

New Mexico A&M	7-33
Kansas State	7-34
Oklahoma City Univ.	0- 0
Pittsburg State	7- 7
St. Benedict's	7-13
Emporia State	0-27
Southwestern College	46- 6
Hastings College (NE)	14- 0
Wichita University	6-26

# 1940 (3-3-3)

McPherson College	32- 0
Oklahoma City University	6- 6
St. Benedict's	0- 6
Sterling College	13- 6
Emporia State	0- 6
Colorado State (Greeley)	0- 0
Peru State (NE)	7- 7
Pittsburg State	6- 0
Southwestern College	0-14

# 1941 (1-6-2)

Kansas State	0- 0
Sterling College	6- 6
College of Emporia	57- 0
Pittsburg State	0-26
Emporia State	19-22
Washburn University	0-21
St. Benedict's	7-26
Southwestern Oklahoma	0-19
Southwestern College	0- 3

# 1942 (1-8-0)

Colorado College	0-13
Southwestern College	0-13
Bethel College	6-20
St. Benedict's	0-33
Emporia State	0-40
Washburn University	13-20
Regis College	13- 6
Pittsburg State	6-13
Kansas Wesleyan Univ.	0-9

# 1943-1945

No football competition for duration of  
World War II

# 1946 (2-4-2)

Kansas Wesleyan Univ.	14- 0
Colorado College	0-15
Southwestern College	0-12
Pittsburg State	0- 0
St. Benedict's	7-14
Emporia State	25- 6
Washburn University	20-20
Colorado Mines	14-35

# 1947 (5-3-1)

Kansas Wesleyan Univ.	28-13
Northwestern Oklahoma	20- 6
Southwestern College	28- 0
Pittsburg State	0- 0
St. Benedict's	27- 7
Emporia State	7-39
Colorado College	7-19
Washburn University	14-47
Colorado Mines	20-13

# 1948 (5-3-1)

Kansas Wesleyan Univ.	21- 0
Northwestern Oklahoma	20- 0
Southwestern College	20- 7
Pittsburg State	27- 7
St. Benedict's	40- 0
Emporia State	0-25
Rockhurst College	7-20
Washburn University	6- 6
New Mexico A&M	14-27

# 1949 (5-4-0)

Kansas Wesleyan Univ.	34- 0
Kansas State	0-55
Southwestern College	14- 0
Pittsburg State	7-26
St. Benedict's	33-20
Colorado College	7-19
Emporia College	9- 0
Washburn University	13-34
Rockhurst College	26- 7

# 1950 (3-4-2)

Northwest Missouri State	21-14
Southwestern College	0- 0
Pittsburg State	0- 6
St. Benedict's	7- 7
Quincy College (IL)	26-25
Emporia State	0-27
Washburn University	0- 7
Colorado College	0-32
Kansas Wesleyan Univ.	26-13

# 1951 (5-4-0)

Northwest Missouri State	20- 7
Southwestern College	34- 0
Pittsburg State	0- 3
St. Benedict's	20-19
Quincy College (IL)	21-22
Emporia State	7-14
Washburn University	6-34
Colorado College	14-13
Kansas Wesleyan Univ.	13- 7

# 1952 (1-6-2)

Northwest Missouri State	6- 7
Southwestern College	13-13
Pittsburg State	7- 7
St. Benedict's	2-14
Camp Carson	7- 6
Emporia State	6-28
Washburn University	14-20
Colorado College	0-49
Kansas Wesleyan Univ.	20-34

# 1953 (3-4-1)

Omaha University	12-20
Southwestern College	33- 6
Pittsburg State	12-12
St. Benedict's	8-20
Northwest Missouri State	7-21
Emporia State	7-20
Washburn University	7- 6
Colorado College	0-49
Kansas Wesleyan Univ.	39- 0





# Year-by-Year Scores

## 1954 (7-2-0)

Omaha University	19-27
Southwest Missouri State	6-0
Northwest Missouri State	20-7
Southwestern College	14-7
Pittsburg State	22-7
Emporia State	20-6
St. Benedict's	12-13
Washburn University	26-6
Kearney (NE) State	41-14

Tied for Central Intercollegiate Conference Championship with Washburn University.

## 1955 (5-3-1)

Central Oklahoma	12-19
Southwest Missouri State	19-7
Northwest Missouri State	27-13
Southwestern College	7-7
Pittsburg State	7-13
Emporia State	32-20
St. Benedict's	27-7
Washburn University	7-27
Kearney (NE) State	20-12

## 1956 (1-8-0)

Central Oklahoma	6-35
Kearney (NE) State	6-18
Northwest Missouri State	19-13
Southwestern College	0-7
Pittsburg State	6-27
Emporia State	13-14
St. Benedict's	0-46
Washburn University	19-32
Panhandle A&M (OK)	6-22

## 1957 (4-4-0)

Kearney (NE) State	0-27
Northwest Missouri State	40-27
Colorado College	20-22
Southwestern College	40-0
Pittsburg State	0-54
St. Benedict's	24-38
Northwest Oklahoma State	21-14
Washburn University	19-16

## 1958 (4-4-1)

Kearney (NE) State	7-35
Northwest Missouri State	13-0
Colorado College	13-7
Southwestern College	21-0
Pittsburg State	16-7
Emporia State	7-7
St. Benedict's	0-41
Washburn University	6-19
Northwest Oklahoma	14-34

## 1959 (3-6-0)

Kearney (NE) State	19-14
Northwest Missouri State	8-13
Southwestern College	20-6
Pittsburg State	12-14
Emporia State	0-26
St. Benedict's	27-45
Omaha University	18-6
Washburn University	12-19
Colorado College	0-47

## 1960 (2-7-0)

Kearney (NE) State	20-12
Northwest Missouri State	9-14
Colorado College	19-28
Eastern New Mexico Univ.	0-25
Omaha University	19-18
Pittsburg State	7-44
Emporia State	14-27
St. Benedict's	21-26
Washburn University	7-33

## \*1961 (0-9-0)

*Kearney (NE) State	24-0
Northwest Missouri State	16-17
Colorado College	6-14
*Eastern New Mexico Univ.	19-19
Omaha University	0-26
Pittsburg State	7-41
*Emporia State	12-7
*St. Benedict's	21-14
*Washburn University	14-7

\*All victories and ties forfeited; ineligible player used.

## 1962 (6-2-1)

Northwest Missouri State	21-0
Colorado College	33-0
Kearney (NE) State	13-27
Omaha University	20-20
Pittsburg State	25-20
Emporia State	13-14
St. Benedict's	21-0
Washburn University	33-14
Southwestern Oklahoma St.	14-6

## 1963 (2-6-1)

Northwest Missouri State	7-7
Colorado Western	0-42
Kearney (NE) State	14-26
Omaha University	6-39
Pittsburg State	12-42
Emporia State	28-13
Southern Colorado	18-14
Washburn University	0-46
Southwestern Oklahoma	14-19

## 1964 (5-4-0)

Kearney (NE) State	35-14
Southwestern Oklahoma	27-19
Colorado Western	7-23
Central Missouri	40-6
Washburn University	7-14
Emporia State	20-19
Southern Colorado	19-34
Pittsburg State	40-7
Omaha University	15-33

## 1965 (6-3-0)

Southwestern Oklahoma	7-6
Kearney (NE) State	21-13
Colorado State	7-21
Central Missouri	40-14
Washburn University	25-0
Emporia State	42-7
Southern Colorado	14-24
Pittsburg State	21-7
Omaha University	21-26

## 1966 (7-2-0)

Southwestern Oklahoma	7-13
Kearney (NE) State	20-0
Colorado State College	34-0
Northwest Missouri State	29-7
Washburn University	7-0
Emporia State	27-13
Southern Colorado State	38-21
Pittsburg State	12-21
Omaha University	19-0

Tie with Pittsburg State for first in CIC (3-1)

## 1967 (3-5-0)

Southwestern Oklahoma	20-27
Kearney (NE) State	7-27
Colorado State College	7-10
Washburn University	35-0
Emporia State	26-7
Southern Colorado State	14-0
Pittsburg State	7-13
Omaha University	28-32

## 1968 (2-7-0)

Northwestern Oklahoma	33-21
Kearney (NE) State	10-29
Colorado State College	7-14
Northwest Missouri State	14-3
Washburn University	6-9
Emporia State	21-41
Southern Colorado State	14-20
Pittsburg State College	13-19
Omaha University	14-32

## 1969 (0-9-0)

Northwestern Oklahoma	6-34
Kearney (NE) State	12-28
Colorado State College	6-53
Northwest Missouri State	14-35
Emporia State	26-41
Southern Colorado State	14-20
Pittsburg State	13-19
Washburn University	6-9
University of Nebraska	14-41

## 1970 (5-5-0)

Northwestern Oklahoma	3-27
Kearney State	21-30
Pittsburg State	28-20
Washburn University	27-8
Emporia State	31-42
Omaha University	19-21
Southern Colorado	43-21
Panhandle State	56-14
U. of Northern Colorado	34-55
Missouri Southern	36-29

## 1971 (2-7-2)

Missouri Southern	37-3
Northwestern Oklahoma	7-40
Kearney State	21-40
Pittsburg State	14-14
Washburn University	10-34
Emporia State	21-23
Nebraska-Omaha	21-27
Southern Colorado	10-7
Panhandle (OK) State	35-36
U. of Northern Colorado	21-42

# 1972 (1-8-1)

Missouri Southern	15-40
Northwestern Oklahoma	21-21
Kearney State	21-24
U. of Northern Colorado	16-45
Pittsburg State	28-14
Washburn University	29-31
Emporia State	7-27
Nebraska-Omaha	14-24
Southern Colorado	9-34
Colorado School of Mines	7-37

# 1973 (5-4-0)

Missouri Southern	14-9
Northwestern Oklahoma	17-20
Kearney (NE) State	37-6
U. of Northern Colorado	14-40
Pittsburg State	26-14
Washburn University	14-19
Emporia State	9-15
Southern Colorado	42-7
Colorado School of Mines	35-0

# 1974 (1-9-0)

Northwestern Oklahoma	18-28
Kearney (NE) State	14-26
Missouri Southern	9-10
Eastern New Mexico	7-14
U. of Northern Colorado	0-3
Pittsburg State	7-21
Washburn University	7-14
Emporia State	13-28
Panhandle State	13-26
Southern Colorado	28-13

# 1975 (3-7-0)

Northwestern Oklahoma	20-21
Kearney (NE) State	7-10
Missouri Southern	32-24
Eastern New Mexico	13-20
Northern Colorado	17-38
Pittsburg State	19-13
Washburn University	8-27
Emporia State	20-8
Panhandle State	21-22
Southern Colorado	27-31

# 1976 (5-4-0)

Northwestern Oklahoma	27-44
Kearney (NE) State	27-21
Missouri Southern	21-20
Southern Colorado	21-31
Missouri Western	14-9
Northern Colorado	20-48
Pittsburg State	20-19
Washburn University	19-23
Emporia State	6-2

Tie with Kearney State and Missouri Southern for CSIC Championship (5-1).

# 1977 (3-7-1)

Adams State	34-7
Northwestern Oklahoma	27-31
Southern Colorado	14-42
Northwest Missouri State	42-28
Missouri Western	22-25
Emporia State	0-10
Pittsburg State	29-29
Missouri Southern	35-29
Wayne State	17-21
Kearney (NE) State	6-26
Washburn University	22-30

# 1978 (6-5-1)

Adams State	6-9
Northwestern Oklahoma	18-21
Southern Colorado	6-29
Northwest Missouri State	36-22
Missouri Western	28-23
Emporia State	27-17
Pittsburg State	35-30
Missouri Southern	14-31
Wayne State	17-17
Kearney State	12-27
Washburn University	17-10
Eastern New Mexico	14-6

# 1979 (5-6-0)

Langston University	31-0
Illinois State	7-35
Northwest Missouri State	7-17
Kearney State	7-17
Wayne State	9-12
Pittsburg State	26-27
Washburn University	20-6
Missouri Southern	16-17
Emporia State	31-21
Missouri Western	38-20
Eastern New Mexico	30-23

# 1980 (4-4-2)

Lincoln University	13-21
Fort Lewis College	21-14
Northwest Missouri State	14-19
Kearney State	21-21
Wayne State	30-34
Pittsburg State	17-21
Washburn University	28-17
Missouri Southern	34-12
Emporia State	34-6
Missouri Western	28-28

# 1981 (6-5-0)

Langston University	27-3
St. Mary of the Plains	51-13
Fort Lewis College	21-17
Panhandle State	7-12
Missouri Western	31-39
Kearney State	22-45
Wayne State	18-24
Pittsburg State	32-57
Washburn University	7-0
Missouri Southern	27-24
Emporia State	16-15

# 1982 (6-3-1)

Langston University	15-9
St. Mary of the Plains	49-0
Panhandle State	7-47
Missouri Western	15-13
Kearney State	16-27
Wayne State	17-6
Pittsburg State	15-37
Washburn University	34-7
Missouri Southern	28-28
Emporia State	29-28

# 1983 (8-3-0)

Lincoln University	14-6
Adams State	31-13
Langston University	14-0
Panhandle State	25-6
Kearney State	44-21
Wayne State	38-14
Pittsburg State	25-29
Washburn University	3-24
Missouri Southern	10-42
Emporia State	43-10
Missouri Western	41-21

First eight-win season since 1935.

# 1984 (0-10-0)\*

* Lincoln University	21-0
* Langston University	24-22
* Panhandle State	27-18
Kearney State	14-47
* Wayne State	21-14
Pittsburg State	13-20
Washburn University	14-26
Missouri Southern	15-22
Emporia State	7-17
Missouri Western	7-19

\*Reflects forfeiture of four games.

# 1985 (7-2-1)

Lincoln University	35-3
Adams State	34-24
Panhandle State	19-19
Missouri Western	17-7
Kearney State	35-28
Wayne State	26-21
Pittsburg State	46-54
Washburn University	30-0
Missouri Southern	20-22
Emporia State	35-26

# 1986 (4-6-0)

Lincoln University	38-6
Northwestern Oklahoma	21-44
Black Hills State (SD)	57-6
Missouri Western	35-0
Kearney State	21-39
Wayne State	14-0
Pittsburg State	14-45
Washburn University	35-40
Missouri Southern	0-3
Emporia State	16-25

# 1987 (5-5-0)

Lincoln University	55-14
Northwestern Oklahoma	12-26
Cameron University	12-37
Kearney State	7-44
Missouri Southern	13-38
Wayne State	29-24
Pittsburg State	13-62
Missouri Western	23-17
Emporia State	40-20
* Washburn University	12-49

\*Forfeit by Washburn





# Tiger Records

## INDIVIDUAL

### Total Offense

Game .....	477	Robert Long vs. Pittsburg State, Oct. 19, 1985 (464 yards passing, 13 yards rushing)
Season .....	3,365	Robert Long, 1985 (3,398 passing, -35 yards rushing)
Career .....	7,085	Robert Long, 1982-85 (7,002 passing, 83 yards rushing)

### Total Plays:

Game .....	71	Jeff Miller vs. Missouri Western, Sept. 27, 1986
Season .....	504	Robert Long, 1985
Career .....	1,118	Robert Long, 1982-85

### Rushing:

#### Most Rushes:

Game .....	48	Tom Doll vs. Emporia State, Nov. 1, 1975
Season .....	328	Tom Doll, 1978 (1,536 yards)
Career .....	928	Tom Doll, 1975-78 (4,477 yards)

#### Most Yards Gained:

Game .....	332	Tom Evans vs. Southern Colorado, Oct. 31, 1970
Season .....	1,536	Tom Doll, 1978 (328 rushes)
Career .....		Tom Doll, 1975-78 (928 rushes)

#### Most Yards Gained Per Game:

Season .....	128.0	Tom Doll, 1978 (1,536 in 12)
Career .....	111.9	Tom Doll, 1975-78 (4,477 in 40)

#### Longest Rushing Gain:

92 yards by Gary Campas vs. Pittsburg State, Oct. 18, 1975

### Passing:

#### Most Passes Attempted:

Game .....	65	Robert Long vs. Pittsburg State, Oct. 15, 1983
Season .....	458	Robert Long, 1985 (275 completed)
Career .....	975	Robert Long, 1982-85 (527 completed)

#### Most Passes Completed:

Game .....	38	Robert Long vs. Missouri Western, Sept. 28, 1985
Season .....	275	Robert Long, 1985 (458 attempted)
Career .....	527	Robert Long, 1982-85 (975 attempted)

#### Most Yards Gained:

Game .....	467	Robert Long vs. Kearney State, Oct. 5, 1985
Season .....	3,398	Robert Long, 1985 (275 of 458)
Career .....	7,002	Robert Long, 1982-85 (527 or 975)

#### Most Touchdown Passes:

Game .....	5	Robert Long vs. Emporia State, Nov. 5, 1983 and Robert Long vs. Lincoln Univ., Sept. 7, 1985
Season .....	20	Robert Long, 1983
Career .....	49	Robert Long, 1982-85

#### Longest Passing Play:

92 yards, Robert Long to Ralph Humphrey vs. Kearney State, Oct. 1, 1983

#### Best Pass Completion Percentage:

Season .....	600	Robert Long, 1985 (275 of 458)
Career .....	541	Robert Long, 1982-85 (527 of 975)

### Receiving:

#### Most Passes Caught:

Game .....	16	Eric Busenbark vs. Wayne State, Oct. 12, 1985
Season .....	81	Eric Busenbark, 1985 (1,014 yards, 6 TDs)
Career .....	168	Eric Busenbark, 1984-87 (2,049 yards, 7 TDs)

**Most Passes Caught Per Game:**

Season .....	8.1	Eric Busenbark, 1985 (81 catches)
Career .....	5.4	John Woodworth, 1970-72 (162 catches)

**Most Yards Gained:**

Game .....	220	Eric Busenbark vs. Kearney State, Oct. 5, 1985
Season .....	1,014	Eric Busenbark, 1985 (81 catches)
Career .....	2,426	John Woodworth, 1970-72 (162 catches)

**Most Yards Gained Per Game:**

Season .....	101.4	Eric Busenbark, 1985 (1,014 yards)
Career .....	80.9	John Woodworth, 1970-72 (2,426 yards)

**Most Touchdown Passes Caught:**

Game .....	3	Ron Morel vs. Washburn, Oct. 16, 1965 Dennis Spratt vs. Washburn, Oct. 14, 1967 Terry Georgeson vs. Northwest Missouri, Sept. 23, 1978 Frankie Neal vs. Washburn, Oct. 25, 1986
Season .....	9	Ralph Humphrey, 1983 Frankie Neal, 1986
Career .....	17	John Woodworth, 1970-72

**Punting:****Most Punts:**

Season .....	62	Ron Johnson, 1981
Career .....	154	Ron Johnson, 1979-82

**Highest Average Per Punt:**

Season .....	39.9	Sam Holloway, 1985 (44 punts/1,757 yards)
Career .....	39.3	Ron Johnson, 1979-82 (154 punts/6,051 yards)

**Longest Punt:**

73 yards by Ron Johnson vs. Missouri Southern, Nov. 7, 1981

**Interceptions:****Most Interceptions:**

Season .....	6	Gary DuBois, 1978 Tracy Harris, 1983
Career .....	11	Gary DuBois, 1977-78 Ron Johnson, 1979-82 Pat Poore, 1981-84

**Most Yards on Interception Returns:**

Season .....	165	Sammy Taamilo, 1985 (2 interceptions)
Career .....	215	Ron Johnson, 1979-82 (11 interceptions)

**Longest Interception Return:**

100 yards by Kelly Barnard vs. Washburn, Oct. 26, 1985

**Punt Returns:****Most Punt Returns:**

Season .....	25	Max Van Laningham, 1965
Career .....	45	Max Van Laningham, 1962-65

**Most Yards on Punt Returns:**

Season .....	241	James Davis, 1982 (16 returns)
Career .....	329	Max Van Laningham, 1962-65 (45 returns)

**Longest Punt Return:**

83 yards by Max Van Laningham, Oct. 30, 1956





# Tiger Records

## Kickoff Returns:

### Most Kickoff Returns:

Season .....	30	Tyrone Tracy, 1987 (668 yards)
Career .....	44	Tyrone Tracy, 1986-present (973 yards)

### Most Yards on Kickoff Returns:

Season .....	668	Tyrone Tracy, 1987 (30 returns)
Career .....	973	Tyrone Tracy, 1986-present (44 returns)

### Longest Kickoff Return:

97 yards by Dave Parker vs. Kearney State, Oct. 6, 1962

## Scoring:

### Most Points Scored:

Game .....	30	Bob Johnson vs. Southern Colorado, Oct. 29, 1966
		Tyrone Tracy vs. Emporia State, Oct. 31, 1987
Season .....	108	Tyrone Tracy, 1987 (18 TDs)
Career .....	220	Bob Johnson, 1963-66 (36 TDs)

### Most Points Scored Per Game:

Season .....	16.6	Dave Parker, 1962 (9 games)
Career .....	6.1	Bob Johnson, 1963-66 (36 games)

### Most Touchdowns Scored:

Game .....	5	Bob Johnson vs. Southern Colorado, Oct. 29, 1966
		Tyrone Tracy vs. Emporia State, Oct. 31, 1987
Season .....	18	Tyrone Tracy, 1987
Career .....	36	Bob Johnson, 1963-66

### Most Field Goals:

Game .....	3	Don Ramsey vs. Eastern New Mexico, Nov. 17, 1979
		Mike Ellsworth vs. Missouri Western, Oct. 2, 1982
Season .....	9	Mike Ellsworth, 1982 (9 of 14)
Career .....	24	Mike Ellsworth, 1980-83 (24 of 44)

### Longest Field Goal

48 yards by Brian Shriwise vs. Northern Colorado, Oct. 11, 1975  
48 yards by Mike Ellsworth vs. Missouri Western, Oct 3, 1981

### Most Extra Points:

Season .....	31	Tom Odle, 1985 (31 of 36)
Career .....	90	Mike Ellsworth, 1980-83

### Most Points Scored by Kicking:

Season .....	46	Don Ramsey, 1979 (22 PATs, 8 FGs)
Career .....	162	Mike Ellsworth, 1980-83, (90 PATs, 24 FGs)

## TEAM

### OFFENSE - Single Game

#### Total Offense:

Most Yards Gained: 761 vs. Southern Colorado, Oct. 31, 1970  
(572 rushing, 189 passing)  
Most First Downs: 32 vs. Black Hills State (SD), Sept. 20, 1986

#### Rushing:

Most Yards Gained: 572 vs. Southern Colorado, Oct. 31, 1970

#### Passing:

Most Passes Attempted: 65 vs. Pittsburg State, Oct. 15, 1983  
Most Passes Completed: 38 vs. Missouri Western, Sept. 28, 1985  
Most Yards Gained: 476 vs. Black Hills State (SD), Sept. 20, 1986

### Scoring (Collegiate Games Only):

Most Points Scored: 57 vs. Black Hills State (SD), Sept. 20, 1986  
57 vs. College of Emporia, 1941  
(125 vs. Salina All-Star town team), 1913

## DEFENSE - Single Game

### Total Offense:

Fewest Yards Allowed: 86 vs. Northwest Missouri State, 1958

### Rushing:

Fewest Yards Allowed: 15 vs. St. Mary of the Plains, Sept. 11, 1982

### Passing:

Fewest Yards Allowed: 0 vs. Southwestern, 1957

0 vs. Benedictine, Nov. 3, 1962

0 vs. Washburn, Oct. 16, 1975

0 vs. Pittsburg State, Nov. 5, 1966

### Scoring:

Time Opponent Shut Out: 113 games

Most Points Allowed: 66 by Cooper College (Sterling), 1919

### Interceptions:

Most Passes Intercepted: 8 vs. Wayne State, Oct. 6, 1984

### Fumbles:

Most Fumbles Recovered: 6 vs. St. Benedict's (Benedictine), 1955

6 vs. Nebraska-Omaha, Oct. 15, 1960

6 vs. Southern Colorado, Nov. 16, 1974

### Punts:

Most Punts: 12 vs. Colorado State College, Sept. 27, 1969

12 vs. Adams State, Sept. 2, 1978

## OFFENSE - Team Season

### Total Offense:

Most Yards Gained: 4,346 in 1970 (2,845 rushing, 1,501 passing)

Most First Downs: 221 in 1970

### Rushing:

Most Yards Gained: 2,845 in 1970

### Passing:

Most Passes Attempted: 473 in 1986

Most Passes Completed: 276 in 1985

Most Yards Gained: 3,409 in 1985

Fewest Passes Intercepted: 5 in 1962 and 1966

### Fumbles:

Fewest Fumbles: 11 in 1967

Fewest Fumbles Lost: 7 in 1967

### Scoring:

Most Points Scored: 297 in 1970 (10 games)

297 in 1985 (10 games)

Fewest Points Scored: 26 in 1928 (8 games)

### Penalties:

Lowest Penalty Yardage: 314 in 1958

Most Penalty Yardage: 850 in 1978

## DEFENSE - Team Season

### Total Defense:

Fewest Yards Allowed: 1,899 in 1967

### Rushing Defense:

Fewest Yards Allowed: 1,078 in 1967

### Fumbles:

Most Fumbles Recovered: 23 in 1981





# Tiger Records

## Punting:

Most Punts: 67 in 1969

Best Punting Average: 39.8 in 1981 (62 punts, 2,468 yards)

## Scoring:

Fewest Points Allowed: 27 in 1917 (7 games)

Most Points Allowed: 323 in 1969 (9 games)

## Miscellaneous

Consecutive Victories: 12 (2nd game-1916 to 7th game-1917)

Consecutive Losses: 16 (5th game-1968 to 2nd game-1970)

Consecutive Games Without Being Shutout: 97 (9th-1963 to 4th-1974)

Consecutive Games Unscored Upon: 3 (1915, 1917, 1925, 1926, 1935)

Consecutive Games Without Scoring: 4 (8th game-1941 to 2nd game-1942)

Consecutive Games Scored Upon: 58 (7th game-1967 to 9th game-1973)

Most Ties in a Season: 3 in 1940

Consecutive Ties: 2 (1939, 1940, 1941 and 1952)

Most Victories in a Season: 8 (1935: 8-2-0; 1983: 8-3-0)

Fewest Victories in a Season: 0 (1969: 0-9-0)

Best Season: 1917 (7-0-0 - 1.000)

Worst Season: 1969 (0-9-0 - .000)

## FHSU Individual Single Game Superlatives

Longest Run From Scrimmage—34 yards by David Lemons	vs. Washburn
Longest Pass Play—70 yards by Tyrone Tracy from Craig Modellmog	vs. Kearney
Longest Touchdown Run—12 yards by Tyrone Tracy	vs. Emporia
Longest Touchdown Pass—70 yards by Tyrone Tracy from Craig Modellmog	vs. Kearney
Longest Punt Return—65 yards by Tyrone Tracy	vs. Lincoln
Longest Kickoff Return—42 yards by Tyrone Tracy	vs. Washburn
Longest Interception Return—23 yards by Dusty Trail	vs. Cameron
Longest Punt—52 yards by Henry Alexander	vs. NW Oklahoma
and 52 yards by Doug Ray	vs. Washburn
Longest Field Goal—36 yards by Tom Odle	vs. Cameron
Most Rushing Attempts—21 by Tim Winter	vs. Missouri Western and Emporia
Most Rushing Yardage—72 yards by Tim Winter	vs. Emporia
Most Touchdowns Rushing—3 by Tyrone Tracy	vs. Emporia
Most Passes Attempted—44 by Craig Modellmog	vs. Missouri Western
Most Passes Completed—22 by Craig Modellmog	vs. Wayne State
Most Yards Passing—314 yards by Craig Modellmog	vs. Wayne State
Most Touchdown Passes Thrown—2 by Craig Modellmog	vs. Lincoln Wayne State and Emporia
Most Touchdown Passes Caught—2 by Tyrone Tracy	vs. Emporia
Most Yards Receiving—147 yards by Tyrone Tracy	vs. Emporia
Most Receptions—9 by Eric Busenbark	vs. Kearney
Most Yards Total Offense—289 yards by Craig Modellmog	vs. Wayne State
Most Points Scored—30 points by Tyrone Tracy	vs. Emporia
Most Total Tackles—14 by Kurt Dinkel	vs. Wayne State
Most Unassisted Tackles—9 by Steve Heft	vs. Emporia State
Most Assisted Tackles—11 by Kurt Dinkel	vs. Kearney
Most Quarterback Sacks—2 by Frank Brown	vs. NW Oklahoma
Most Tackles For Loss—3 by Greg Yost (twice) and Frank Brown	
Most Fumbles Recovered—2 by Duane Charbonneau	vs. Lincoln
Most Interceptions—2 by Dusty Trail	vs. Cameron
Most Punts—12 by Doug Ray	vs. Pittsburg
Best Punting Average—41.0 by Henry Alexander	vs. NW Oklahoma
Best Kick Return Average—30.0 by Tyrone Tracy	vs. NW Oklahoma
Best Punt Return Average—24.0 by Tyrone Tracy	vs. Lincoln

# Primary Media Outlets

## NEWSPAPERS:

**Hays Daily News** — P.O. Box 857, 507 Main Street, Hays, KS. 67601. Telephone: (913) 628-1081. Sports Editor: Rod Gardner. Writers: Diane Gasper-O'Brien and Randy Gonzales.

**University Leader** — Fort Hays State University, 600 Park Street, Hays, KS. 67601-4099. Telephone: (913) 628-5301. Sports Editor: Ted Harbin.

**Salina Journal** — P.O. Box 779, Salina, KS. 67401. Telephone: (913) 823-6363 or 1-800-432-7606. Sports Editor: Harold Bechard. Beat Writers: Brad Catt and Ken Corbett.

**Wichita Eagle-Beacon** — 825 East Douglas, Wichita, KS. 67201. Telephone: (316) 268-6251 or 1-800-825-6397 in-state or 1-800-835-0055 out-of-state. Beat Writer: Bill MacKay.

**Kansas City Star Times** — 1729 Grand Avenue, Kansas City, MO. 64108. Telephone: (816) 234-4355. Beat Writer: Bill Richardson.

**Topeka Capital Journal** — 616 Jefferson Avenue, Topeka, KS. 66607. Telephone: (913) 295-1188 or 1-800-432-2915. Beat Writer: Steve Thompson.

**Hutchinson News** — 300 West 2nd Street, Hutchinson, KS. 67501. Telephone: (316) 662-3311. Beat Writer: Greg Peters.

## WIRE SERVICES:

**Associated Press** — 1715 Grand Avenue, Kansas City, MO. 64108. Telephone: (816) 421-4844 or 1-800-892-7860. Sports Director: Doug Tucker.

**United Press International** — 915 Harrison, #135N, Topeka, KS. 66612. Telephone: (913) 233-5648 or 1-800-332-0061.

## RADIO:

**KAYS (1400 AM)** — 2300 Hall Street, Hays, KS. 67601. Telephone: (913) 625-2578. Sports Director: Wyatt Thompson. Play-by-play flagship station of the Tigers.

**KJLS (103 FM)** — 2911 Canterbury Road, Hays, KS. 67601. Telephone: (913) 628-1064.

**KHAZ (99 FM)** — 301 West 13th, Hays, KS. 67601. Telephone: (913) 625-8402.

**KQMA/KKAN (93 FM/1490 AM)** — P.O. Box 548, Phillipsburg, KS. 67661. Telephone: (913) 543-2151 or 543-6593. Sports Director: Tad Felts.

**KZZL (108 FM)** — P.O. Box 138, Great Bend, KS 67530. Telephone: (316) 792-7108.

## TELEVISION:

**KAYS-TV (Channel 7, CBS affiliate)** — 2300 Hall Street, Hays, KS. 67601. Telephone: (913) 625-2578. Sports Director: Wyatt Thompson. Home of the "Tiger Football Show" which airs every Thursday during the season at 10:30 p.m.

**KFHS-TV (Channel 12 on Hays Cable, Closed Circuit TV)** — Fort Hays State University, 600 Park Street. Telephone: (913) 628-4198.



# 1988 Tiger Football

75 Years — 1913-1988

SEPTEMBER 3 Saturday, 2:00 p.m.	Western State (CO) College at Gunnison, CO
SEPTEMBER 10 Saturday, 7:00 p.m.	Northwestern Oklahoma State University Hays, KS
SEPTEMBER 17 Saturday, 7:00 p.m.	Cameron (OK) University (Hall of Fame Game) Hays, KS
SEPTEMBER 24 Saturday, 2:00 p.m.	*Kearney State (NE) College at Kearney, NE
OCTOBER 1 Saturday, 2:00 p.m.	*Missouri Southern State College (Homecoming) Hays, KS
OCTOBER 8 Saturday, 1:30 p.m.	*Wayne State (NE) College at Wayne, NE
OCTOBER 15 Saturday, 2:00 p.m.	*Pittsburg State University at Pittsburg, KS
OCTOBER 22 Saturday, 1:30 p.m.	*Missouri Western State College Hays, KS
OCTOBER 29 Saturday, 1:30 p.m.	*Emporia State University at Emporia, KS
NOVEMBER 5 Saturday, 2:00 p.m.	*Washburn University (Parents' Day) Hays, KS

\* Denotes CSIC games

All Times Central

For Ticket Information: (913) 628-4050