

Fort Hays State University

FHSU Scholars Repository

Athletic Programs Collection

Archives Online

1978

1978 Fort Hays State University Football Yearbook

Fort Hays State University

Follow this and additional works at: https://scholars.fhsu.edu/athletic_programs

Recommended Citation

Fort Hays State University, "1978 Fort Hays State University Football Yearbook" (1978). *Athletic Programs Collection*. 83.

https://scholars.fhsu.edu/athletic_programs/83

This Brochure is brought to you for free and open access by the Archives Online at FHSU Scholars Repository. It has been accepted for inclusion in Athletic Programs Collection by an authorized administrator of FHSU Scholars Repository.



Fort Hays State University

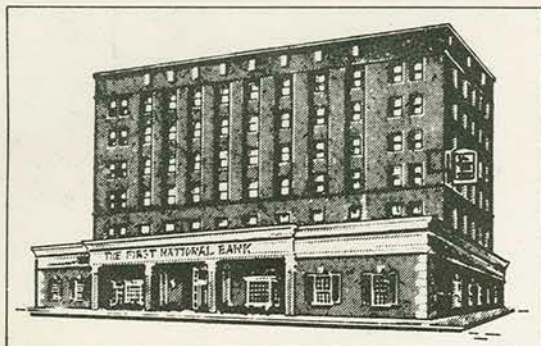
**football
yearbook**

1978

1ST NATIONAL BANK

Personally Serving You Since 1888

Where Your Personal Bankers Treat You "Like Somebody Special"



Main Bank—12th & Main, Hays

9:00-3:00 Mon.-Friday
9:00-12:00 Saturday • (913) 625-6595



"A Full Service Facility"

Handy Bank—Just East of 27th & Vine, Hays

7:30-5:30 Mon.-Saturday

Member F.D.I.C.

DOUBLE



**SPORTING
GOODS
INC.**

1109 MAIN • HAYS, KANSAS 67601

FHSU Head Football Coach Bill Giles and Tiger running back Tom Doll know the best place to go for all your sporting goods needs is Double AA Sporting Goods, 1109 Main. Call 625-7388 or stop in and see Lee Albert. Double AA supplies much of the sporting goods used in Tiger athletic competition.





Fort Hays State University

1978 football yearbook

THE CONTENTS

	Page
The Stadium	5
The University	6
The President	7
The Coaches	9
The Outlook	12
The Tigers	13
The Record Book	18
The Athletic Administration	27
The Boosters	30, 31
The Roster	32

ON THE COVER—

Tiger linebacker Mike Carney prepares to pounce on a loose ball during 1977 action against Wayne State.

FHSU/ General Information

Location/ Hays, Kansas 67601

Enrollment/ 5,733 (est.)

Founded/ 1902

President/ Dr. Gerald W. Tomanek

Athletic Committee Chairman

Jim Kellerman, Registrar and
Director of Admissions

Chairman of HPERA

Dr. Russell Bogue

Office Phone: (913) 628-4420

Home Phone: (913) 625-7245

Director of Athletics/ Phil Wilson

Office Phone: (913) 628-4420

Home Phone: (913) 625-3759

Assistant Athletic Director

Bill Butler

Office Phone: (913) 628-4420

Home Phone: (913) 625-7467

Associate Athletic Directors

Edgar F. McNeil and Nancy Popp

Head Football Coach

Bill Giles, Nebraska '55

Office Phone: (913) 628-4420

Home Phone: (913) 625-9683

Assistant Coaches

Jerry Cullen, Northern Colo. '65

Lynn Lashbrook, Ft. Hays State '70

Brian Naber, Concordia '71

Head Trainer/ Brad Brown

School Colors/ Black and Gold

Nickname/ Tigers

Conference/ Central States

Intercollegiate (NAIA Division I)

Stadium/ Lewis Field Stadium (7,000)

Sports Information Director

Charles "Mac" Yates

Office Phone: 913/628-4420

Press Box Phone: 913/628-5316

1977 Record/ 3-7-1 (CSIC, 1-5-1)

Lettermen Lost/ 19—Returning/ 21

Band/ Fort Hays State Band

Vic Sisk, Director



TIGER FOOTBALL YEARBOOK—

Written, edited, and compiled by Duane DaPron, Student Sports Information Director. Published by The Ellsworth Printing Co., Ellsworth, Kansas.

Fort Hays State University / To News Media

This 1978 edition of Fort Hays State University's Football Media Guide has been prepared to aid you in covering the Tigers and to provide information about our coaches,

athletes and University. If additional material is needed, please write or call the Sports Information Director at any time.

Fort Hays State University / Press Information

PRESS PASSES/ Passes for the working press are issued on an individual game basis by the Sports Information Director. Credentials should be requested as early as possible. Press personnel attending as guests are entitled to general admission seats. Passes not furnished by return mail must be picked up in person at the Will-Call window.

BROADCAST/ Permission for broadcast rights must be secured at least two weeks in advance from the Sports Information Director. Line installations are ordered by the individual stations through their local telephone companies. Each station is allocated a broadcast booth and four press passes.

PRESS BOX SEATING/ The FHSU press box is limited to accredited writers, radio-television broadcasters, scouts and other designated officials. Photographers and cameramen are also permitted in the press box. Press box seating is assigned by the Sports Information Director. FHSU supplies a play-by-play account at the end of each quarter and first half and final statistics. Telephones and free refreshments are also available.

SCOUTING PASSES/ Passes for scouts must be requested at least two weeks in advance from the Sports Information Director. Two seats are allocated to each organization requesting credentials.

1978 TIGER SCHEDULE

<u>Date</u>	<u>Opponent</u>	<u>Time</u>
Sept. 2	At Adams State College	2:00 p.m.
Sept. 9	NORTHWEST OKLA. ST. U.	7:30 p.m.
Sept. 16	U. OF SOUTHERN COLO.	7:30 p.m.
Sept. 23	At Northwest Missouri State	1:30 p.m.
Sept. 30	MO. WESTERN COLLEGE* (Parents' Day)	7:30 p.m.
Oct. 7	At Emporia State University*	1:30 p.m.
Oct. 14	PITTSBURG STATE U.* (Homecoming)	1:30 p.m.
Oct. 21	At Mo. Southern College*	7:30 p.m.
Oct. 28	WAYNE STATE COLLEGE* (Senior Day)	7:30 p.m.
Nov. 4	At Kearney State College*	1:30 p.m.
Nov. 11	WASHBURN UNIVERSITY* (Scout Day)	1:30 p.m.
Nov. 18	At Eastern New Mexico	8:30 p.m.

* CONFERENCE GAMES ALL TIMES CENTRAL
HOME GAMES IN CAPS

1977 TIGER RESULTS

<u>FHSU</u>	<u>Opponent</u>	
34	Adams State (H)	7
27	Northwestern Oklahoma (A)	31
14	Southern Colorado (A)	42
42	Northwest Missouri (H)	28
22	Missouri Western (A)*	25
0	Emporia State (H)*	10
29	Pittsburg State (A)*	29
35	Missouri Southern (H)*	29
17	Wayne State (A)*	21
6	Kearney State (H)*	26
22	Washburn University (A)*	30

* CONFERENCE GAMES



Heritage Savings Association

Serving Northwest Kansas from offices located at:

**Colby ● Oakley ● Norton
● Smith Center ● Hays**



Pierce-Schippers Construction Co., Inc.

(913) 628-1013

Commercial and Institutional Buildings

**Farmers State Bank Building
P.O. Box 697 Hays, Kansas 67601**

**Steel Buildings by
Atlantic Building Systems, Inc.**

**"For Everyday
Low Prices"**

shop...



Featuring A Complete Line of National Products

109 West 7th • 27th and Hall



Hays National Bank

1010 East 27th—Main Bank
1108 Main Street—Downtown
Facility

Member F.D.I.C.

James Lincoln-Mercury GMC, Inc.



I-70 and Highway 183 North
625-3454



Complete...
Sales, Parts and Service

James Motor Co., Inc.

13th & Main

625-3481



Complete...

SALES—Gary Timken, Steve Atkisson
Whitey Dreiling, Randy McCoy, Clark
Hartman.

PARTS—Al Leiker, Phil Dragoo

SERVICE—Stan Dreiling, Julie Engel

FINANCING—Gene Vopat



First in sight
off the Interstate
I-70 & US-183

Holiday Inn®

of Hays, Kansas

featuring the new
HOLIDOME FUN CENTER

Includes:

- ★ Resort Area with Indoor Pool
- ★ Whirlpools ★ Saunas
- ★ Sun Deck ★ Game Rooms



The Stadium

Lewis Field Stadium, the 7,000-seat home of the Tigers, was constructed in 1936 on what was formerly the Golden Belt Fairgrounds, and named in honor of William Alexander Lewis, president from 1913 to 1933.

The native limestone structure is located beside a spacious tree-lined drive and is just a short walk from the campus residence halls and the downtown business district.

The stadium turf is Bermuda grass, the same strong-rooted plant used in golf course greens.

Dressing rooms, concession areas, restrooms, athletic booster club facilities, athletic training facilities, and equipment storage rooms are located under the grandstands.

Fans are admitted through two main gates located on both the east and west sides, with four ticket windows in service for the game.

Atop both the east and west grandstands are press box facilities which provide seating for writers and statisticians, three radio stations, scouts, and three film crews.

An eight-lane, cinder track surrounds the playing field and adjacent to the stadium are regulation size practice facilities.



Bob Finch & Associates, Inc.

13th and Pine • Hays, Kansas

625-7313



**PLAZA
KWIK TRIP**

2707 Vine No. 18
Hays, Kansas

**Groceries • Gas
Pop • Beer**

Open: 7 a.m. to 12 p.m.
Seven Days A Week

625-3132



with
'Haysel'

**Our
24-Hour
Teller**

Located in our
Motor Bank Lobby
at 29th and Plaza



**Farmers State Bank
and Trust Company • Hays**

Member F.D.I.C.
8th & Main / 29th & Plaza • Telephone 625-6542

The University

Since its founding in 1902 as a state-supported institution, Fort Hays State University has developed through the years as a multi-purpose regional educational institution serving more than 60 counties and approximately 60,000 square miles.

The college opened its doors on June 23, 1902, with 34 students, two faculty members and 19 courses. Today the University enrollment reaches nearly 6,000 students with its primary function of serving the needs of the people in Kansas.

Physically, the University consists of more than 30 major structures with a total value of more than \$25 million. The campus proper consists of nearly 80 acres, while all of the University land totals more than 4,000 acres.

Academically, the University is fully accredited and is composed of four schools—Education, Business, Arts and Sciences, and Nursing. Degrees are offered on the post-graduate, graduate, undergraduate and associate levels. The faculty numbers more than 275 and more than 22,000 persons are FHSU alumni.

Administratively, the University operates under a nine-member Board of Regents appointed by the governor of Kansas. The administrative structure consists of three major areas—academic affairs, administration and finance, and student affairs. Each is headed by a vice president.

Athletically, the University sponsors a full program of intercollegiate sports for men and women. Intercollegiate competition at FHSU is conducted in accordance with the rules and regulations of the Central States Intercollegiate Conference, National Association of Intercollegiate Athletics, and the Association of Intercollegiate Athletics for Women. In addition, students may participate in almost 45 intramural activities. The University's athletic facilities include a 7,000-seat stadium, a 7,000-seat arena, with a pro-turf one-tenth mile track for indoor competition, an indoor swimming pool, eight all-weather lighted tennis courts, and athletic training facilities.



Fort Hays State University Campus



Dr. Gerald W. (Jerry) Tomanek
President

The President

Since 1947, Dr. Gerald W. (Jerry) Tomanek has been a part of Fort Hays State University. In those 31 years, Dr. Tomanek has served in many capacities from instructor of biology, grassland ecology and range management to the office of the President.

Dr. Tomanek was named President of Fort Hays State University on January 17, 1976, after serving as Acting President for seven months. The two-time graduate of Fort Hays State holds his doctorate in botany from the University of Nebraska.

A long-time educator and western Kansas native, he has almost 35 published works to his credit and has contributed chapters to three books. He has lectured to more than 30 national and international professional societies.

Honors are not new to the seventh president of FHSU. He has received the Fort Hays State Alumni Achievement Award, the Trail Boss Award from the Range Management Society, the Conservation Educator of the Year Award from the Kansas Wildlife Society, and the W. D. Philips Conservation Award, to name a few.

He was also the recipient of over ten grants from 1953 to 1975 dealing with the study of grassland ecology and range management.

Dr. Tomanek recognizes, in addition to academics the need for a strong administration in an institution of higher learning.

Dr. Tomanek also knows how important athletics is to an institution.

"I am very proud of our total athletic program, and it is an integral part of our total university," said Dr. Tomanek. "Young men and women are very fortunate to participate in intercollegiate athletics and can learn some valuable lessons like friendship and teamwork in a way that will enhance their horizons."

The President also feels the need for a strong conference and a strong national organization.

"The Central States Intercollegiate Conference has to be one of the best conferences in the country and the NAIA has a record that speaks for itself," added Dr. Tomanek. "Fort Hays State has shown its total athletic strength in the past, too, by being ranked in the upper 20 nationally for a number of years."

Dr. Tomanek and his wife, Ardis, have three daughters, Walta and Sheila, both of whom are married, and Lisa, 15. The Tomaneks also have five grandchildren.

"The Tigers"



RAMADA INN

I-70 & North Hwy. 183

Hays, Kansas 67601

Motel

913-628-8261

105 Newly Remodeled Rooms

- Pool • Color TV
- Instant Reservations System
- Commercial Rates Available

Restaurant

913-625-3624

*Good Food
served in a quiet
atmosphere*

Meeting & banquet
facilities for 300
persons.

Alpine Room

Private Club - For Members & Guests

RED COAT RESTAURANT

509 West 7th

625-9892



have presses ...

WILL PRINT
anything plain or fancy

Ellis County Star

Call or see Mike Billinger

708 Main

Hays

625-7358

The Farmers National Bank of Victoria

Victoria, Kansas

★ *The Bank
That Service
Built*

Marcotte

REALTY & AUCTION

- *RESIDENTIAL
- *COMMERCIAL
- *FARMS
- *RANCHES
- *PROPERTY MANAGEMENT
- *APPRAISALS



625-5629

1401 Main Hays, Kansas 67601



**Best
Western**

VAGABOND Motel & Restaurant

North Vine Hays, Kansas 67601

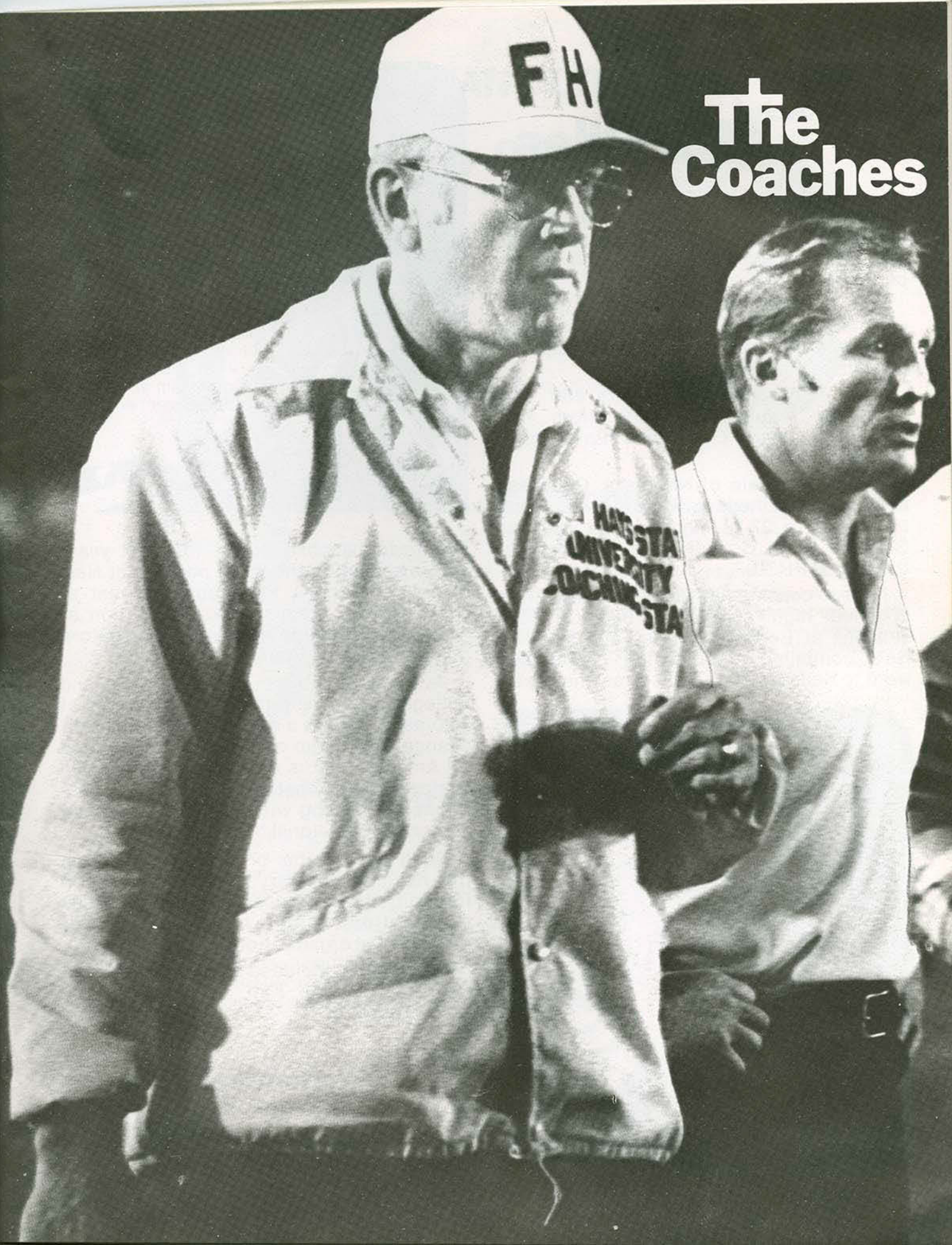
Private Club • Buffet Daily

For Motel Reservations Call...

913-625-2511—Hays

800-528-1234—Nationwide

The Coaches



Fort Hays State University

Head Coach / Bill Giles

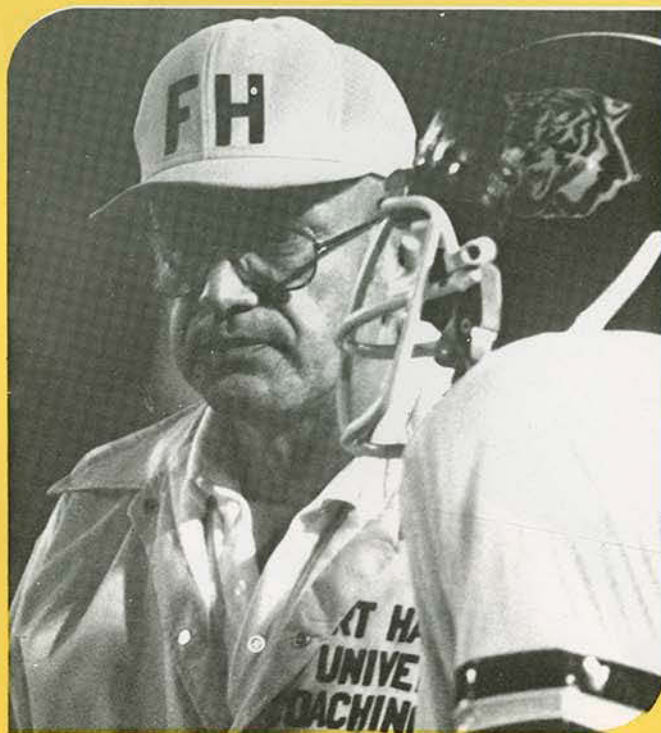
As he enters his seventh season at Fort Hays State University Bill Giles sees the 1978 Tiger team as having a lot of experience.

"We are going to have a lot of players who have seen plenty of action," said Giles. "We hope we can use this experience to our advantage this season."

With eight offensive starters and nine defensive regulars returning from last year's 3-7-1 team, Giles does have reason for optimism.

A 1955 graduate of Nebraska, Giles has been a college head coach for 11 seasons. He posted a 27-18 mark in five years at Chadron State College, before accepting the post at FHSU.

Prior to coaching at Chadron State, Giles coached high school football for four seasons at Bertrand, Sidney and Norfolk, Neb., compiling a record of 25-11. He then went to Kearney State College as line coach



and head baseball coach for four years before accepting the same position at New Mexico University. He spent one year at NMU, leaving there to take a position at Hiram Scott College for one season, before going to Chadron State.

A standout athlete in high school and college, Giles was a two-sport letterman at Nebraska. He was a member of the 1955 NU Orange Bowl team and won all-district and All-America honors as a first baseman his senior season. That year he led the conference in batting with a .460 average and signed a professional baseball contract.

Giles is a member of Phi Epsilon Kappa, the national honorary physical education fraternity, the American Football Coaches Association and numerous other professional organizations.

Giles family includes his wife, Joan, and their four children, Kim, 23; Bill, 20; Doug, 17; and Kerri, 15.



Fort Hays State University / ASSISTANT COACHES

Defensive Line / Jerry Cullen

Jerry Cullen is entering his seventh year on the FHSU coaching staff. He will serve as defensive line coach.

The 34-year-old Pueblo, Colo., native was Bill Giles' first choice for his coaching staff at Fort Hays State. Cullen previously coached under Giles at Chadron State before coming to FHSU.

Before going to Chadron State, Cullen coached two seasons at Arvada West High School in Arvada, Colo., and two years at St. Procopius College in Illinois.

A former MVP at Northern Colorado, he received his bachelor's degree from UNC in 1965 and his master's degree in 1970 from Chadron State.

Cullen is married to the former Judy Lechtenberg of Butte, Neb. They have three daughters.



Lynn Lashbrook / Offensive Backs

Lynn Lashbrook begins his sixth season on the Tiger staff. He will serve as offensive back coach this year.

The four-year FHSU letterman also serves as assistant track coach.

Lashbrook is a 1970 graduate of FHSU, and received his master's degree from Springfield College in 1971. He is presently pursuing his doctorate at the University of Northern Colorado. The Kansas City native is married to the former Marty Dewees, also of Kansas City. They have two children.

Offensive Line / Brian Naber

Brian Naber is entering his second season on the Tiger staff. Naber comes to FHSU after coaching two years in Japan at the American School. He will handle the offensive line for the Tigers.

The Waco, Neb., native was head coach at Minneapolis (Minn.), Lutheran High School prior to going to Japan. His Minneapolis team won the conference championship and ended the season with an 8-2 slate.

A 1971 graduate of Concordia College (Neb.), Naber received his master's degree from the University of Northern Colorado in 1972.

Naber is married to the former Janice Ann Fredrickson of St. Louis. They have one child.



Graduate Assistants

In addition to the regular coaching staff, the Tiger football team is helped by several graduate assistants. Graduate assistants for 1978 include Dave Schrader, Blond Farmer, Jerry Simmons and Monte Pritchett. Schrader will coach the offensive receivers while Farmer will handle the defensive backs. Simmons and Pritchett will work with the linebackers.

'78 Outlook

Seventeen starters and 21 lettermen return to give Fort Hays State University Head Football Coach Bill Giles a strong nucleus for the 1978 season.

Heading the list of returnees on offense is 1975 All-America selection Tom Doll. The Claflin senior rushed for 988 yards a year ago and is 60 yards from the 3000-yard career rushing milestone. The 5-7 tailback scored eight touchdowns on the ground and caught two passes for scores, leading the Tigers with 62 points.

Gone, however, from the third best offense in the CSIC in 1977 are All-America selections Skip Numrich (quarterback) and Dave Meter (wide receiver). Numrich holds all the Tigers' single season and career passing marks, while Meter led Fort Hays State University the past two seasons with 44 and 42 receptions, respectively.

Despite the losses, the offensive backfield and receiving corps will be strong. Filling the void at quarterback should be Mike Lybarger, Arvada, Colo. junior, who started in a few games at the end of the 1977 season. Tod Holloway, Farmington, N.M. sophomore, will also be fighting for the top signal caller role.



Teaming up with Doll at fullback could be Bethany College transfer Wes Alstatt (6-5, 240).

At the receiving spots, flanker Louis Pfortmiller, Natoma senior, and split end Terry Georgeson, Lenora junior, return to starting positions for the Tigers. Cimarron Junior Justin Marchel has been moved from defensive tackle to tight end to better utilize his outstanding speed.

"We are still going to be a young football team," Head Coach Bill Giles said. "We concentrated on filling in some spots and adding depth at many positions."

On the offensive line, one junior college transfer will join five lettermen to strengthen the Tigers in that area. Center Andy Mattison, from Garden City Community College, will be counted on to aid the FHSU cause.

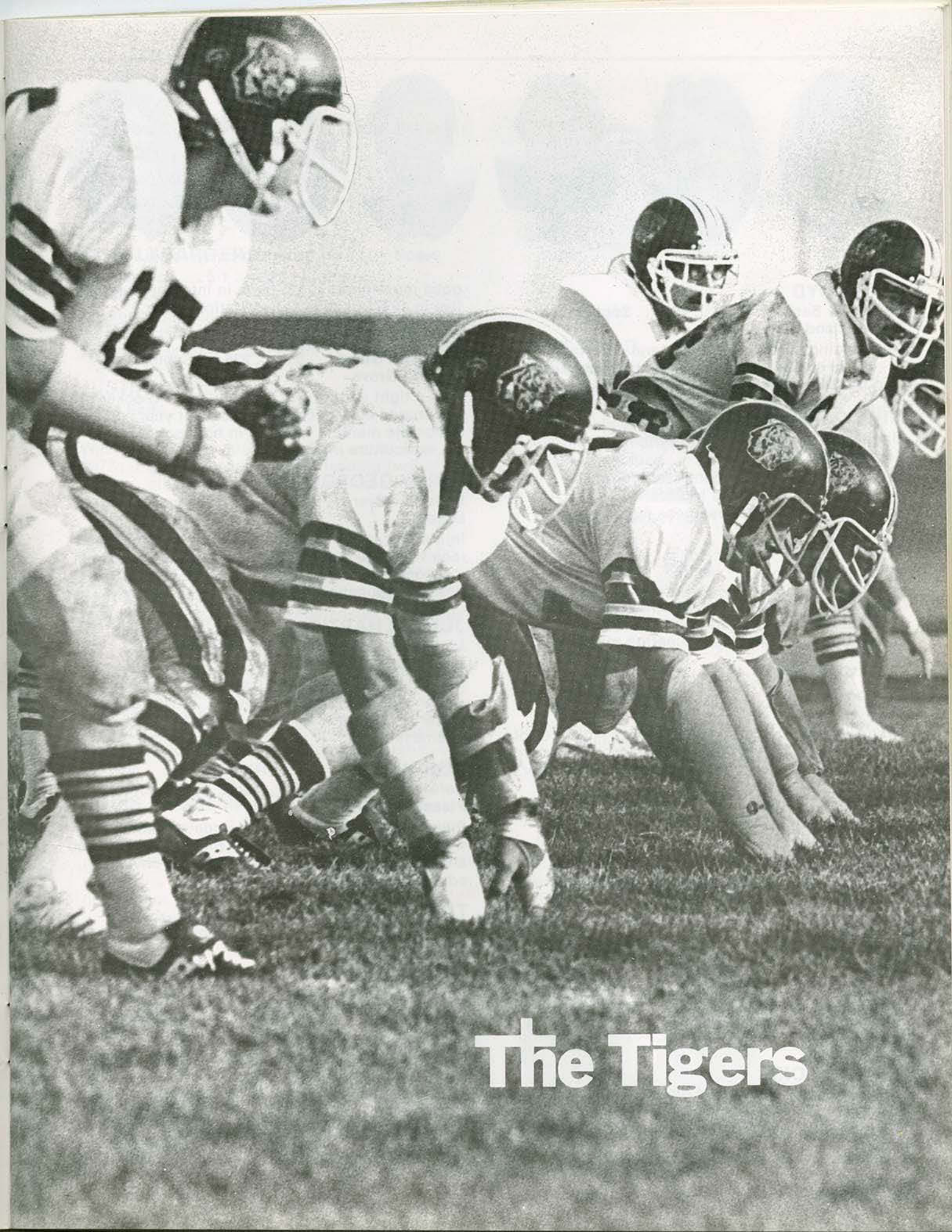
Defensively the Tigers boast All-America candidates Gary DuBois, West Monroe, La. senior and Mike Carney, Kansas City, Mo. junior. DuBois, at his defensive back position, led the Tigers in interceptions and ranked fifth in total defensive plays a year ago. Carney was second in total defensive plays and tackles for losses and was chosen to the second team all-CSIC squad at a linebacker position.

Along with DuBois, sophomore lettermen Gary Sechrist, Hays, Jimmy Wittman, Quinter, and Terry Pasby, Elk City, Okla. senior, return at defensive back and will be helped by sophomores Gary Kirmer, Hoisington, Mike Boyd, Grand Island, NY, and Southeast Missouri State transfer Sam Farmer. The linebacking corps should be improved with Carney, sophomores Junior Hartig, Ellinwood, Brett Hughes, Wooster, Ohio; and transfer Steve Johnson.

At defensive line sophomores Bob Heider, Pleasanton, Neb., and Bill Turner, Cozad, Neb., and juniors Bill Sand, Overbrook, and Rick Peters, Kansas City, Kan., head the list of returnees. Several transfers and incoming freshmen will also be counted on.

"We have some outstanding players coming back, and with the transfers and freshmen we have, things look bright for this season," Giles said.

Fort Hays State will open its 12-game season September 2 at Alamosa, Colo., against Adams State. The Tigers defeated Adams State in Lewis Field Stadium last year 34-7. FHSU will open home play Sept. 9 against Northwest Oklahoma.



The Tigers



CARNEY



CHANDLER



DOLL



DuBOIS



GEORGESON



HOLLOWAY

MIKE BOYD

Defensive Back ... 5-11 ... 160 ... Sophomore
Grand Island, N.Y.

Outstanding speed ... good lateral movement ... could see much playing time this season ... also top track performer ... business major.

MIKE CARNEY

Linebacker ... 6-2 ... 215 ... Junior
Kansas City, Mo.

Excellent pursuit ... second leading tackler a year ago ... led in unassisted tackles with 65 ... aggressive ... general business major.

MARK CHANDLER

Tackle ... 6-3 ... 245 ... Senior
Lindsborg

Could start this year ... good strength ... bolsters Tiger offensive line ... has shown continued improvement ... physical education major.

KELLY CRUISE

Linebacker ... 6-0 ... 215 ... Sophomore
Wooster, Ohio

Strong enough to ward off blockers ... member of Tiger specialty teams last year ... led high school team to state crown ... physical education major.

STEVE CURTIS

Tight End ... 6-4 ... 210 ... Junior
Dodge City

Played for Tigers in 1976 ... good hands and size ... can get open easily ... all-conference in high school ... business major.

TOM DOLL

Running Back ... 5-7 ... 170 ... Senior
Claflin

Top rusher for Tigers the last three years ... holds three individual records ... NAIA Honorable Mention All-America as a frosh ... industrial arts major.

GARY DUBOIS

Defensive Back ... 6-1 ... 175 ... Senior
West Monroe, La.

Starter a year ago ... should start again in 1978 ...

good movement ... led team in interceptions with five in 1977 ... physical education major.

KEVIN GANT

Offensive Guard ... 6-5 ... 225 ... Senior
Council Grove

Was a tight end in 1977 ... aggressive blocker ... snared one touchdown pass last year ... honorable mention all-state in high school ... agriculture major.

TERRY GEORGESON

Wide Receiver ... 6-0 ... 180 ... Junior
Lenora

Injured for much of 1977 season ... sure-handed receiver ... runs good routes ... should start ... honorable mention all-state as a senior ... physical education major.

JUNIOR HARTIG

Linebacker ... 6-2 ... 215 ... Sophomore
Ellinwood

Saw a lot of playing time last season ... can play either offensively or defensively ... two-year all-stater ... lettered four years in football ... business major.

BOB HEIDER

Defensive Tackle ... 6-4 ... 245 ... Sophomore
Pleasanton, Neb.

Played for Tigers in 1976 ... wards off blockers well ... all-stater in football in high school ... also an all-conference basketball player ... physical education major.

TOD HOLLOWAY

Quarterback ... 6-1 ... 175 ... Sophomore
Farmington, N.M.

Switched from defensive back to quarterback a year ago ... good arm ... all-stater two years in high school ... engineering major.

GARY KIRMER

Defensive Back ... 5-11 ... 180 ... Sophomore
Hoisington

Good potential ... may start this season ... adds depth to defensive secondary ... lettered four years at Claflin High ... biology major.

LYNN KOCH

**Offensive Guard ... 6-2 ... 230 ... Senior
Ellinwood**

Saw a lot of playing time last year ... good quickness ... unanimous all-league choice on offense and defense at Ellinwood High School ... pre-law major.

MIKE LYBARGER

**Quarterback ... 6-1 ... 190 ... Junior
Arvada, Colo.**

Backup signal caller a year ago ... started in latter part of season ... could be number one signal caller this season ... art major.

JUSTIN MARCHEL

**Tight End ... 6-4 ... 235 ... Junior
Cimarron**

Was defensive tackle last year ... started in 1977 ... good blocker ... third leading tackler in 1977 ... all-conference in high school ... physical education major.

TERRY PASBY

**Defensive Back ... 5-11 ... 180 ... Senior
Elk City, Okla.**

Started last year ... good speed and lateral movement ... aggressive in defensive secondary ... has good range ... agriculture major.

RICK PETERS

**Defensive Tackle ... 6-3 ... 235 ... Junior
Kansas City, Ks.**

Saw some action last fall ... mobile ... possible starter ... good pursuit ... improves defensive line outlook ... zoology major.

LOUIS PFORTMILLER

**Wide Receiver ... 6-1 ... 190 ... Senior
Natoma**

Has been switched from tailback to wide receiver ... will help team's passing attack ... conference javelin champion last spring ... engineering major.



...the fighting Tigers

BILL SAND

**Noseguard ... 6-1 ... 190 ... Junior
Overbrook**

Returns for third season ... should see some action this year ... may develop into top line performer ... brightens defensive line outlook ... major undecided.

GARY SECHRIST

**Defensive Back ... 5-11 ... 180 ... Sophomore
Hays**

Good prospect for the future ... stays with receivers well ... quick ... placed second in the javelin at NAIA Track Championships last spring ... art major.

BILL TURNER

**Noseguard ... 6-0 ... 220 ... Sophomore
Cozad, Neb.**

Started and played in 1975 for Tigers ... tough competitor ... gained All-America recognition in high school ... all-state and all-conference twice ... physical education major.

JIM WITTMAN

**Defensive Back ... 6-0 ... 165 ... Sophomore
Quinter**

Great potential ... versatile athlete ... all-state second team offensive selection in high school ... also an all-conference basketball choice ... industrial arts major.

LYBARGER



MARCHEL



PASBY



PETERS



PFORTMILLER



TURNER



/ '77 Statistics

TEAM

FHSU	OPPONENTS	
213	FIRST DOWNS—Total	175
103	Rushing	99
92	Passing	61
18	Penalties	15
517	RUSHING—Total Attempts	522
2341	Yards Gained	2451
398	Yards Lost	290
1943	Net Yards Gained	2161
21	Touchdowns	23
176.6	Yardage Average	196.5
268	PASSING—Total Attempts	222
131	Completions	93
22	Had Intercepted	15
1791	Net Yards Gained	1628
13	Touchdowns	11
162.8	Yardage Average	148.0
3734	TOTAL OFFENSE YARDAGE	3789
785	Total Plays	744
339.5	Average	344.5
47	PUNTING—Total Attempts	51
1	Had Blocked	0
1643	Total Yardage	1838
34.9	Average	36.0
27-14	FUMBLES, LOST	36-18
835	PENALTY YARDAGE	917
35	TOUCHDOWNS—Total	36
13	Passing	11
21	Rushing	23
1	Returns	2
2-7	FIELD GOALS	7-12
1	SAFETIES	1
24-35	CONVERSIONS	33-36
18-24	Kicking	27-29
1-3	Passing	4-5
5-8	Rushing	2-2
248	TOTAL POINTS	278
22.5	Average	25.3

SCORING BY QUARTERS

	1	2	3	4	Total
FHSU	78	53	57	60	248
OPPONENTS	64	56	58	100	278

INDIVIDUAL

RUSHING

Player	G	Att	NYG	TD's	AVG	YPG	LR
Tom Doll	11	196	988	8	5.0	89.8	78
Tom Harmon	8	97	519	4	5.4	64.9	45
Skip Numrich	10	94	166	5	1.8	16.6	36
Louis Pfortmiller	11	45	152	1	3.4	13.8	37
Pete Kriwiel	1	2	8	0	4.0	8.0	6
Mike Lybarger	7	28	48	2	1.7	6.9	15
Mike Boyd	11	27	72	0	2.7	6.5	20
Scott Downing	4	6	17	0	2.3	4.3	4
Terry Georgeson	5	3	10	0	3.3	2.0	4
Lynn Koch	9	1	5	0	5.0	0.6	5
Chuck Durfee	11	5	5	0	1.0	0.5	7
Jim Bever	2	1	1	0	1.0	0.5	1
Greg Downing	4	1	-4	0	0.0	0.0	0
Rick Bennett	9	4	-4	0	0.0	0.0	0
Tod Holloway	2	6	-4	1	0.0	0.0	15
Dave Meter	11	1	-6	0	0.0	0.0	0

PASSING

Player	G	Att	Com	Int	Yds	TD's	EP's	Pct.	CPG	YPG
Skip Numrich	10	189	101	17	1390	10	1	.534	10.1	139.0
Mike Lybarger	7	62	25	5	308	3	0	.403	3.6	44.0
Tod Holloway	2	15	3	0	59	0	0	.200	1.5	29.5
Pete Kriwiel	1	1	1	0	25	0	0	1.000	1.0	25.0
Dave Meter	11	1	1	0	9	0	0	1.000	0.1	0.8

PASS RECEIVING

Player	G	Ct	Yds	TD's	EP's	YPR	RPG	YPG	LG
Dave Meter	11	44	760	3	0	17.3	4.0	69.1	48
Terry Georgeson	5	11	165	0	0	15.0	2.2	33.0	31
Tom Doll	11	26	275	2	0	10.6	2.4	25.0	24
Rick Bennett	9	9	174	2	0	19.3	1.0	19.3	47
Louis Pfortmiller	11	13	157	2	1	12.1	1.2	14.3	37
Jim Baldwin	2	1	25	0	0	25.0	0.5	12.5	25
Chuck Durfee	11	9	95	3	0	10.6	0.8	8.6	20
Tom Harmon	8	8	68	0	0	8.5	1.0	8.5	14
Larry Kraft	2	1	9	0	0	9.0	0.5	4.5	9
Kevin Gant	11	3	28	1	0	9.3	0.3	2.5	12
Mike Boyd	11	6	25	0	0	4.2	0.5	2.3	9

TOTAL OFFENSE

Player	G	Att	YdR	YdP	Tot	YPG
Skip Numrich	10	283	166	1390	1556	155.6

INTERCEPTIONS

Player	G	No.	Yds	TD's	IPG
Gary DuBois	11	5	60	0	0.5
Robert Douglas	11	3	23	0	0.3
Terry Pasby	8	2	19	0	0.3
Bren DeBusk	10	2	0	0	0.2
Blond Farmer	7	1	0	0	0.1
Greg Dutt	10	1	2	0	0.1
Justin Marchel	11	1	2	0	0.1

KICKOFF RETURNS

Player	G	No.	Yds	Avg.	TD
Gary DuBois	11	14	272	19.4	0
Mike Boyd	11	18	334	18.6	0
Tom Doll	11	1	14	14.0	0
Louis Pfortmiller	11	1	12	12.0	0

INDIVIDUAL/ (Kickoff Returns Cont'd)

Scott Christ	7	1	11	11.0	0
Chuck Durfee	11	2	17	8.5	0
Kevin Gant	11	1	7	7.0	0
Mike Carlson	11	1	3	3.0	0

PUNT RETURNS

Player	G	No.	Yds	Avg.	TD
Louis Pfortmiller	11	16	64	4.0	0
Mike Boyd	11	1	20	20.0	0
Blond Farmer	7	5	42	8.4	0
Gary Sechrist	8	8	10	1.3	0
Gary DuBois	11	1	1	1.0	0

PUNTING

Player	G	No.	Yds	Avg.
Chuck Durfee	11	20	735	36.8
Tom Harmon	8	23	830	36.1
Greg Downing	3	2	29	14.5
Tod Holloway	2	1	46	46.0
Team—	10	1	Blocked	

OPPONENT FUMBLES RECOVERED

Player	No.	Yds	TD
Justin Marchel	5	0	0
Bren DeBusk	3	0	0
Mike Carney	2	0	0
Greg Dutt	1	0	1
Blond Farmer	1	9	0
Gary DuBois	1	0	0
John Horesky	1	0	0

Jim Homolka	1	0	0
Bill Sand	1	0	0
Fred Gillig	1	0	0
Robert Douglas	1	0	0

SCORING

Player	G	TD	PAT	FG's	TP	PPG
Tom Doll	11	2-8-0	0-1-0	0-0	62	5.6
Skip Numrich	10	0-5-0	0-2-0	0-0	34	3.4
Tom Harmon	8	0-4-0	0-0-0	0-0	24	3.0
Brian Schriwise	11	0-0-0	18-0-0	2-7	24	2.1
Louis Pfortmiller	11	2-1-0	0-0-1	0-0	20	1.8
Chuck Durfee	11	3-0-0	0-0-0	0-0	18	1.6
Dave Meter	11	3-0-0	0-0-0	0-0	18	1.6
Mike Lybarger	7	0-2-0	0-2-0	0-0	16	2.3
Rick Bennett	9	2-0-0	0-0-0	0-0	12	1.3
Kevin Gant	11	1-0-0	0-0-0	0-0	6	0.6
Greg Dutt	10	0-0-1	0-0-0	0-0	6	0.6
Tod Holloway	2	0-1-0	0-0-0	0-0	6	3.0

TACKLES/ASSISTS

Gillig, 59-63; Carney, 65-51; Marchel, 38-43; Homolka, 44-37; DuBois, 45-30; Larsen, 45-25; DeBusk, 39-30; Dutt, 31-38; Horesky, 43-23; Sand, 20-22; Douglas, 20-14; Pasby, 18-15; Farmer, 20-13; Shay, 12-11; Sechrist, 13-9; Loughhead, 10-4; Hartig, 6-5; Gant, 4-5; Cruise, 7-1; Hughes, 5-3; Wittman, 4-3; Goad, 1-6; Carlson, 4-2; Shriwise, 2-2; Durfee, 4-0; Peters, 0-3; King, 2-1; Pfortmiller, 3-0; Christ, 1-1; East, 1-1; Barnard, 0-1; Meter, 1-0; Georgeson, 1-0; Numrich, 1-0; Downing, 0-1; Boyd, 1-0.

*Come on,
Come on...have a **PEPSI** day.*

Join the Pepsi people at the Fort Hays State football games.

HAYS **PEPSI-COLA**
Bottling Company

East Highway 40

628-3024

or Toll Free Number
1-800-432-8272

Fort Hays State University / The Records

WON-LOST RECORDS—

Longest winning streak:

12 games, 1916-1917

Longest losing streak:

14 games, 1968-69

Most victories, season:

8, 1935

Fewest victories, season:

0, 1969

Most ties, season:

3, 1940

Most consecutive ties:

2, 1939, 1940, 1941, 1952

Best season record (percentage):

1.000, 7-0-0, 1917

Worst season record (percentage):

.000, 0-9-0, 1969

SCORING—

Most points scored, game:

125 vs. Salina All-Stars, 1913 (town team),
most points in intercollegiate game, 57 vs.
College of Emporia, 1941

Most points scored, season:

289, five games, 1913 (town teams and high
schools) most points in intercollegiate
season, 297, 10 games, 1970

Most points by opponents, game:

66, Cooper College (now Sterling), 1919

Most points by opponents, season:

323, nine games, 1969

Fewest points scored, season:

26, eight games, 1928

Fewest points by opponents, season:

27, seven games, 1917

Most consecutive games without scoring:

4, 1941-42

Most consecutive games scoring:

97, 1963-1974

Most consecutive games unscored upon:

3, 1915, 1917, 1925, 1926, 1935

Most consecutive games scored upon:

58, 1967-1973

TEAM OFFENSIVE RECORDS—

Total offense, game:

761, vs. Southern Colorado, 1970

Total offense, season:

4,346, 1970

Rushing yardage, game:

572 vs. Southern Colorado, 1970

Rushing yardage, season:

2,845, 1970

Passing yardage, game:

320 vs. Panhandle State, 1971

Passing yardage, season:

1,791, 131 of 268, 1977

Passes attempted, game:

42 vs. Washburn, 1976

Passes attempted, season:

277, 1972

Passes completed, game:

23 vs. Northern Colorado, 1975

Passes completed, season:

131, 1977

Fewest passes intercepted, season:

5, 1962, 1966

First downs, game:

30 vs. Southern Colorado, 1970

First downs, season:

221, 1975

Scoring, game:

57 vs. College of Emporia, 1941
(125 vs. Salina All-Stars, a town team, 1913)

Scoring, season:

297, 1970

Most punts, game:

12 vs. Colorado State College, 1969

Most punts, season:

67, 1969

Best punting average, season:

39.0, 1965

Fewest fumbles, season:

11, 1967

Fewest fumbles lost, season:

7, 1966, 1967

Lowest penalty yardage, season:

314, 1958

TEAM DEFENSIVE RECORDS—

Total offense allowed, game:

86 vs. NW Missouri, 1958

Total offense allowed, season:

1,899, 1967

Rushing yardage allowed, game:

31 vs. Central Missouri, 1964

Rushing yardage allowed, season:

1,078, 1967

Passing yardage allowed, game:

0 vs. Southwestern, 1957;
St. Benedict's, 1962; Washburn, 1965;
KSC-Pittsburg, 1966

Passing yardage allowed, season:

503, 1965

Opponents passes intercepted, game:

5 vs. Kearney State, 1965

Fort Hays State University / **The Records**

Opponents passes intercepted, season:
17, 1966

Opponents fumbles recovered, game:
6, St. Benedicts, 1955; Omaha, 1960;
Southern Colorado, 1974

Opponents fumbles recovered, season:
22, 1974

INDIVIDUAL RECORDS—

Total offense, game:
369, Bruce Hawley vs. Panhandle State, 1971

Total offense, season:
1,556, Skip Numrich, 1977

Total offense, career:
4,166, Bob Johnson, 1963-66

Total plays, game:
56, Jonathan Douglas vs. Emporia State, 1970

Total plays, season:
329, Skip Numrich, 1976

Total plays, career:
893, Bob Johnson, 1963-66

Rushing yardage, game:
332, Tom Evans vs., Southern Colorado, 1970

Rushing yardage, season:
1,310, Tom Doll, 1975

Rushing yardage, career:
2,956, Rich Dreiling, 1965-68

Rushing attempts, game:
48, Tom Doll vs. Emporia State, 1975

Rushing attempts, season:
286, Tom Doll, 1975

Rushing attempts, career:
668, Rich Dreiling, 1965-68

Passing yardage, game:
320, Bruce Hawley vs. Panhandle State, 1971

Passing yardage, season:
1,562, Skip Numrich, 1976

Passing yardage, career:
2,952, Skip Numrich, 1976-77

Passes attempted, game:
42, Skip Numrich vs. Washburn, 1976

Passes attempted, season:
237, Skip Numrich, 1976

Passes attempted, career:
426, Skip Numrich, 1976-77

Passes completed, game:
23, Greg Custer vs. Northern Colorado, 1975

Passes completed, season:
115, Skip Numrich, 1976

Passes completed, career:
216, Skip Numrich, 1976-77

Pass receiving yardage, game:
200, John Woodworth vs. Kearney State, 1971

Pass receiving yardage, season:
851, John Woodworth, 1972

Pass receiving, career:
2,426, John Woodworth, 1970-72

Passes received, game:
15, John Woodworth vs. Kearney State, 1971

Passes received, season:
65, John Woodworth, 1972

Passes received, career:
162, John Woodworth, 1970-72

Scoring passes received, game:
3, Ron Morel vs. Washburn, 1965 and
Dennis Spratt vs. Washburn, 1967

Scoring passes received, season:
8, Dave Meter, 1976

Scoring passes received, career:
17, John Woodworth, 1970-72

Scoring, game:
30, Bob Johnson vs. Southern Colorado, 1966

Scoring, season:
96, Dave Parker, 1962

Scoring, career:
220, Bob Johnson, 1963-66

Punting average, season:
39.5, Max Evans, 1972

Punting average, career:
38.0, Jack Richardson, 1960

Highest pass completion percentage, season:
.534, Skip Numrich, 101 of 189, 1977

Longest rushing gain:
92, Gary Campas vs. Pittsburgh, 1975

Longest passing gain:
80, Jonathan Douglas-Dave Wassenberg vs.
Nebraska-Omaha, 1971

Longest punt return:
83, Max Van Laningham vs.
Southern Colorado, 1963

Longest kickoff return:
97, Dave Parker vs. Kearney State, 1962

Longest interception return:
70, Bob Sweazy vs. Kearney State, 1954

Longest punt:
72, Ron Morel vs. Washburn, 1964

Longest field goal:
48, Brian Shriwise vs. Northern Colorado, 1975

Series Records

<u>OPPONENT</u>	<u>LAST GAME</u>	<u>GAMES</u>	<u>WON</u>	<u>LOST</u>	<u>TIE</u>
Adams State	1977	1	1	0	0
Arizona State	1938	1	1	0	0
Augustana (S.D.)	1935	1	1	0	0
Baker University	1920	3	1	2	0
Bethany College	1933	18	10	6	2
Bethel College	1942	1	0	1	0
Central Oklahoma	1956	2	0	2	0
Central Missouri	1965	2	2	0	0
Chadron State	1938	5	5	0	0
College of Emporia	1941	12	8	3	1
Colorado Mines	1973	4	2	2	0
Colorado College	1962	13	3	10	0
U. of Northern Colorado	1976	14	1	12	1
U. of Southern Colorado	1977	15	7	8	0
Colorado Western	1964	2	0	2	0
Denver University	1921	1	0	1	0
Eastern New Mexico	1975	4	0	4	0
Emporia State	1977	51	17	32	2
Friends University	1920	1	0	1	0
Hastings College	1939	4	2	1	1
Kansas State	1949	10	1	8	1
Kansas Wesleyan	1953	25	17	6	2
Kearney State	1977	30	14	16	0
McPherson College	1940	6	3	3	0
Missouri Southern	1977	8	6	2	0
Missouri Western	1977	2	1	1	0
New Mexico A & M	1948	2	0	2	0

Series Records

<u>OPPONENT</u>	<u>LAST GAME</u>	<u>GAMES</u>	<u>WON</u>	<u>LOST</u>	<u>TIE</u>
Northwest Missouri	1977	18	11	6	1
Northwestern Oklahoma	1977	15	5	9	1
Oklahoma Baptist	1936	2	1	1	0
Oklahoma City U.	1940	2	0	0	2
Nebraska-Omaha	1972	16	3	12	1
Ottawa University	1922	2	2	0	0
Panhandle State	1975	6	2	4	0
Peru State	1940	1	0	0	1
Pittsburg State	1977	50	16	26	8
Quincy College	1951	2	1	1	0
Regis College	1942	1	1	0	0
Rockhurst	1949	2	1	1	0
Southwestern College	1959	32	20	7	5
Southwest Missouri	1955	2	2	0	0
Benedictine College	1962	26	6	17	3
Sterling College	1941	15	9	4	2
Wichita State	1939	18	6	11	1
Washburn University	1977	43	11	29	3
Wayne State College	1977	1	0	1	0

1978 Opponents In Bold Face



**Home of the
Tigers**

/All-Time Football Record

<u>Year</u>	<u>Coach</u>	<u>Record</u>	<u>Points</u>
1913	Ira Van Cleave	4-1-0	289- 39
1914	Ira Van Cleave	5-2-0	180- 41
1915	W. G. Speer	4-3-0	74- 67
1916	W. G. Speer	5-1-0	95- 48
1917	W. G. Speer	7-0-0	140- 27
1918	W. G. Speer	2-1-0	49- 39
1919	A. J. Robertson	3-6-0	74- 62
1920	George Woodward	2-5-1	108-108
1921	George Woodward	6-1-0	99- 55
1922	George Woodward	2-4-1	38- 67
1923	Bill Weidlein	4-3-2	94- 78
1924	Bill Weidlein	4-4-0	71- 81
1925	Bill Weidlein	2-4-1	37- 42
1926	Bill Weidlein	3-5-0	79- 60
1927	Bill Weidlein	3-5-1	64-118
1928	Bill Weidlein	3-3-2	26- 90
1929	Andrew Schoeppel	2-5-0	38- 61
1930	Jack Riley	2-5-2	34- 95
1931	Jack Riley	3-5-1	27-131
1932	Jack Riley	4-5-0	57- 58
1933	Jack Riley	6-2-2	145- 61
1934	Jack Riley	6-2-1	132- 64
1935	Jim Yeager	8-2-0	172- 57
1936	Paul Waldorf	6-3-0	140- 64
1937	Paul Waldorf	6-2-1	101- 56
1938	Paul Waldorf	7-2-0	181- 65
1939	Paul Waldorf	2-5-2	94-146
1940	Paul Waldorf	3-3-3	64- 45
1941	Paul Waldorf	1-6-2	89-123
1942	Bill Bearley	1-8-0	39-167
1943-44-45 No teams; World War II			
1946	Ralph Huffman	2-4-2	80-102
1947	Ralph Huffman	5-3-1	151-144
1948	Ralph Huffman	5-3-1	155- 92
1949	Ralph Huffman	5-4-0	143-161
1950	Ralph Huffman	3-4-2	80-131
1951	Ralph Huffman	5-4-0	135-119
1952	Ralph Huffman	1-6-2	75-178
1953	Ralph Huffman	3-4-1	125-105

<u>Year</u>	<u>Coach</u>	<u>Record</u>	<u>Points</u>
1954	Ralph Huffman	7-2-0	180- 87
1955	Ralph Huffman	5-3-1	158-125
1956	Wayne McConnell	1-8-0	75-214
1957	Wayne McConnell	4-4-0	164-198
1958	Wayne McConnell	4-4-1	97-150
1959	Wayne McConnell	3-6-0	116-190
1960	Wayne McConnell	2-7-0	116-227
1961	Wayne McConnell	4-4-1*	119-145
1962	Wayne McConnell	6-2-1	193-101
1963	Wayne McConnell	2-6-1	99-248
1964	Wayne McConnell	5-4-0	210-169
1965	Wayne McConnell	6-3-0	198-118
1966	Wayne McConnell	7-2-0	193- 75
1967	Wayne McConnell	3-5-0	144-125
1968	Wayne McConnell	2-7-0	129-188
1969	Tom Stromgren	0-9-0	97-323
1970	Tom Stromgren	5-5-0	297-267
1971	Tom Stromgren	2-7-1	197-266
1972	Bill Giles	1-8-1	167-297
1973	Bill Giles	5-4-0	208-138
1974	Bill Giles	1-9-0	116-183
1975	Bill Giles	3-7-0	184-214
1976	Bill Giles	5-4-0	175-217
1977	Bill Giles	3-7-1	248-278
Totals		231-262-39	7,654-7,790

*Victories and tie officially forfeited for using ineligible player.



Fort Hays State University / All-Time Scores

1902 (school founded)—1912

Indications of some football activity, but no official records available.

1913 (4-1-0)

Hays Normal	Opp.
96 Oakley High School	0
35 Oberlin High School	3
33 Norton High School	6
0 •Cooper College	23
125 Salina "All-Stars"	7

★ Officially Fort Hays Kansas Normal School

•Now Sterling College

★ 1914 (5-2-0)

Hays Normal	Opp.
46 Luray High School	0
0 Kansas Wesleyan University	13
33 Plainville High School	0
52 Codell High School	7
0 Cooper College	7
16 Kansas Wesleyan University	7
33 Cooper College	7

★ Admitted to Kansas Conference; first conference alignment

1915 (4-3-0)

Hays Normal	Opp.
6 •Fairmount College	20
25 Bethany College	27
9 Haskell Inst. Reserves	0
6 Kansas Wesleyan University	20
16 St. Mary's College	0
6 Bethany College	0
6 Ottawa University	0

•Now Wichita University

1916 (5-1-0)

Hays Normal	Opp.
7 Haskell Institute	27
20 Kansas Wesleyan University	0
13 College of Emporia	12
8 Bethany College	6
14 St. Mary's College	3
33 Haskell Inst. Reserves	0

1917 (7-0-0)

Hays Normal	Opp.
23 Southwestern College	20
7 Baker University	0
8 St. Mary's College	0
28 Haskell Inst. Reserves	7
3 Bethany College	0
38 Kansas Wesleyan University	0
33 Cooper College	0

Kansas Conference Championship; first in history of school

1918 (2-1-0)

Hays Normal	Opp.
0 Fort Riley Medics	33
21 Bethany College	6
28 Camp Funston	0

1919 (3-6-0)

Hays Normal	Opp.
0 Southwestern College	10
0 Camp Funston	3
7 Baker University	17
0 •Kansas State College	12
0 St. Mary's College	7
14 Cooper College	6
21 Bethany College	0
26 Kansas Wesleyan University	0
6 Washburn University	7

•Now Kansas State University

1920 (2-5-1)

Hays Normal	Opp.
0 Kansas State	14
0 Friends University	7
6 Haskell Institute	33
14 St. Mary's College	26
41 Kansas Wesleyan University	0
0 Baker University	21
7 Bethany College	7
40 Sterling College	0

1921 (6-1-0)

Hays Normal	Opp.
7 Denver University	41
32 McPherson College	0
18 Kansas Wesleyan University	0
14 St. Mary's College	7
7 Bethany College	0
14 Southwestern College	7
7 Sterling College	0

Kansas Conference Championship

1922 (2-4-1)

Hays Normal	Opp.
18 Ottawa University	13
14 McPherson College	16
3 Kansas Wesleyan University	0
0 St. Mary's College	21
0 Bethany College	7
3 College of Emporia	3
0 Fairmount College	7

1923 (4-3-2)

★ KSTC	Opp.
49 St. John's College	6
3 Emporia State	26
0 McPherson College	7
3 Kansas Wesleyan University	3
7 St. Mary's College	6
20 Bethany College	0
12 College of Emporia	10
0 Fairmount College	20
0 Sterling College	0

★ Name changed to Kansas State Teachers College at Hays in 1923

1924 (4-4-0)

KSTC	Opp.
28 St. John's College	6
2 Emporia State	19
0 McPherson College	20

13 Kansas Wesleyan University	3
0 St. Mary's College	6
6 Bethany College	14
13 Fairmount College	7
9 Sterling College	6

1925 (2-4-1)

KSTC	Opp.
25 St. John's College	0
3 Emporia State	13
0 Pittsburg State	6
6 St. Mary's College	7
0 Bethany College	16
0 Fairmount College	0
3 Sterling College	0

1926 (3-5-0)

KSTC	Opp.
53 Kearney (Neb.) State	0
0 Emporia State	14
0 Sterling College	3
13 St. Mary's College	9
0 Bethany College	11
14 Kansas Wesleyan University	9
0 Fairmount College	7
0 Pittsburg State	7

1927 (3-5-1)

KSTC	Opp.
6 Kansas State	30
25 Kearney (Neb.) State	6
0 Emporia State	26
14 Sterling College	0
6 St. Mary's College	0
6 Bethany College	6
0 Kansas Wesleyan University	17
0 Bethany College	20
7 Pittsburg State	13

★ 1928 (3-3-2)

KSTC	Opp.
0 Hastings College (Neb.)	0
7 Kansas State	21
0 Emporia State	34
0 Southwestern College	0
7 Wichita University	0
0 College of Emporia	33
6 Washburn University	2
6 Pittsburg State	0

★ Member of new conference, Central Intercollegiate Conference

★ 1929 (2-5-0)

KSTC	Opp.
0 Hastings College	3
0 Emporia State	6
0 Pittsburg State	12
6 College of Emporia	7
13 Wichita University	0
19 Southwestern College	6
0 Washburn University	26

★ Coach was Andrew F. Schoeppel, then a lawyer at Ness City, Ks., and later U.S. Senator from Kansas for many years (died, 1962)

(Continued on Next Page)

/All-Time Scores (Cont'd)**1930 (2-5-2)**

KSTC	Opp.
7 Sterling College	13
0 Emporia State	0
6 Hastings College (Neb.)	0
0 Pittsburg State	14
14 College of Emporia	0
0 Wichita University	14
0 Kansas Wesleyan University	0
7 Washburn University	33
0 Southwestern College	21

*** 1931 (3-5-1)**

FKHSC	Opp.
0 Kearney (Neb.) State	2
0 Emporia State	26
6 Washburn University	27
3 College of Emporia	0
6 McPherson College	2
0 Southwestern College	0
6 Bethany College	0
6 Pittsburg State	13
0 Wichita University	61

★ Changed to Fort Hays Kansas State College

1932 (4-5-0)

FKHSC	Opp.
0 Colorado State (Greeley)	7
13 Bethany College	0
13 Emporia State	0
0 Washburn University	13
3 Wichita University	19
0 College of Emporia	6
19 Kearney (Neb.) State	0
10 Southwestern College	0
0 Pittsburg State	13

1933 (6-2-2)

FKHSC	Opp.
9 Wichita University	13
15 Emporia State	6
0 Pittsburg State	0
19 Southwestern College	15
19 Bethany College	0
33 Panhandle A & M (Okla.)	0
9 College of Emporia	6
0 Washburn University	0
41 Kearney (Neb.) State	0
0 Kansas Wesleyan University	21

1934 (6-2-1)

FKHSC	Opp.
0 Kansas State	13
15 Emporia State	0
16 Chadron (Neb.) State	0
12 Wichita University	7
6 St. Benedict's	6
0 Pittsburg State	19
23 Washburn University	12
19 Southwestern College	7
41 Kansas Wesleyan University	0

Central Intercollegiate Conference Championship; first since joining new conference

1935 (8-2-0)

FKHSC	Opp.
34 Augustana (S. Dak.)	6
26 Chadron (Neb.) State	0
3 Kansas State	0
★ 1 Emporia State	0
34 Wichita University	6
0 St. Benedict's	18
20 Southwestern College	0
0 Pittsburg State	21
12 Washburn University	6
42 Oklahoma Baptist	0

Tied for Central Intercollegiate Conference Championship with Pittsburg State and Wichita U.

★ Forfeit; Emporia State used ineligible player

1936 (6-3-0)

FKHSC	Opp.
0 Kansas State	13
32 Chadron (Neb.) State	7
25 Southwestern College	0
14 Wichita University	0
12 St. Benedict's	27
15 Emporia State	7
13 Haskell Institute	0
23 Pittsburg State	0
6 Oklahoma Baptist	10

Central Intercollegiate Conference Championship

1937 (6-2-1)

FKHSC	Opp.
21 Northwestern Oklahoma	6
7 Chadron (Neb.) State	0
28 Southwestern College	0
12 Southwestern Oklahoma	7
13 Pittsburg State	6
6 Emporia State	14
7 St. Benedict's	7
7 College of Emporia	3
0 Wichita University	13

1938 (7-2-0)

FKHSC	Opp.
21 Chadron (Neb.) State	0
14 St. Benedict's	19
20 Arizona State (Flagstaff)	19
20 College of Emporia	0
14 Emporia State	0
38 Kearney (Neb.) State	6
7 Wichita University	15
19 Pittsburg State	6
28 Southwestern College	0

1939 (2-5-2)

FKHSC	Opp.
7 New Mexico A & M	33
7 Kansas State	34
0 Oklahoma City University	0
7 Pittsburg State	7
7 St. Benedict's	13
0 Emporia State	27
46 Southwestern College	6
14 Hastings College (Neb.)	0
6 Wichita University	26

1940 (3-3-3)

FKHSC	Opp.
32 McPherson College	0
6 Oklahoma City University	6
0 St. Benedict's	6
13 Sterling College	6
0 Emporia State	6
0 Colorado State (Greeley)	0
7 Peru State (Neb.)	7
6 Pittsburg State	0
0 Southwestern College	14

1941 (1-6-2)

FKHSC	Opp.
0 Kansas State	0
6 Sterling College	6
57 College of Emporia	0
0 Pittsburg State	26
19 Emporia State	22
0 Washburn University	21
7 St. Benedict's	26
0 Southwestern Oklahoma	19
0 Southwestern College	3

1942 (1-8-0)

FKHSC	Opp.
0 Colorado College	13
0 Southwestern College	13
6 Bethel College	20
0 St. Benedict's	33
0 Emporia State	40
13 Washburn University	20
13 Regis College	6
6 Pittsburg State	13
0 Kansas Wesleyan University	9

1943-1945

No football competition for duration of World War II.

1946 (2-4-2)

FKHSC	Opp.
14 Kansas Wesleyan University	0
0 Colorado College	15
0 Southwestern College	12
0 Pittsburg State	0
7 St. Benedict's	14
25 Emporia State	6
20 Washburn University	20
14 Colorado Mines	35

1947 (5-3-1)

FKHSC	Opp.
28 Kansas Wesleyan University	13
20 Northwestern Oklahoma	6
28 Southwestern College	0
0 Pittsburg State	0
27 St. Benedict's	7
7 Emporia State	39
7 Colorado College	19
14 Washburn University	47
20 Colorado Mines	13

1948 (5-3-1)

FKHSC	Opp.
21 Kansas Wesleyan University	0
20 Northwestern Oklahoma	0

(Continued on Next Page)

Fort Hays State University / All-Time Scores (Cont'd)

20	Southwestern College	7
27	Pittsburg State	7
40	St. Benedict's	0
0	Emporia State	25
7	Rockhurst College	20
6	Washburn University	6
14	New Mexico A & M	27

1949 (5-4-0)

FHKSC		Opp.
34	Kansas Wesleyan University	0
0	Kansas State	55
14	Southwestern College	0
7	Pittsburg State	26
33	St. Benedict's	20
7	Colorado College	19
9	Emporia College	0
13	Washburn University	34
26	Rockhurst College	7

1950 (3-4-2)

FHKSC		Opp.
21	Northwest Missouri State	14
0	Southwestern College	0
0	Pittsburg State	6
7	St. Benedict's	7
26	Quincy College (Ill.)	25
0	Emporia State	27
0	Washburn University	7
0	Colorado College	32
26	Kansas Wesleyan University	13

1951 (5-4-0)

FHKSC		Opp.
20	Northwest Missouri State	7
34	Southwestern College	0
0	Pittsburg State	3
20	St. Benedict's	19
21	Quincy College (Ill.)	22
7	Emporia State	14
6	Washburn University	34
14	Colorado College	13
13	Kansas Wesleyan University	7

1952 (1-6-2)

FHKSC		Opp.
6	Northwest Missouri State	7
13	Southwestern College	13
7	Pittsburg State	7
2	St. Benedict's	14
7	Camp Carson	6
6	Emporia State	28
14	Washburn University	20
0	Colorado College	49
20	Kansas Wesleyan University	34

1953 (3-4-1)

FHKSC		Opp.
12	Omaha University	20
33	Southwestern College	6
12	Pittsburg State	12
8	St. Benedict's	20
7	Northwest Missouri State	21
7	Emporia State	20
7	Washburn University	6
39	Kansas Wesleyan University	0

1954 (7-2-0)

FHKSC		Opp.
19	Omaha University	27
6	Southwest Missouri State	0
20	Northwest Missouri State	7
14	Southwestern College	7
22	Pittsburg State	7
20	Emporia State	6
12	St. Benedict's	13
26	Washburn University	6
41	Kearney (Neb.) State	14

Tied for Central Intercollegiate Conference Championship with Washburn University.

1955 (5-3-1)

FHKSC		Opp.
12	Central Oklahoma	19
19	Southwest Missouri State	7
27	Northwest Missouri State	13
7	Southwestern College	7
7	Pittsburg State	13
32	Emporia State	20
27	St. Benedict's	7
7	Washburn University	27
20	Kearney (Neb.) State	12

1956 (1-8-0)

FHKSC		Opp.
6	Central Oklahoma	35
6	Kearney (Neb.) State	18
19	Northwest Missouri State	13
0	Southwestern College	7
6	Pittsburg State	27
13	Emporia State	14
0	St. Benedict's	46
19	Washburn University	32
6	Panhandle A & M (Okla.)	22

1957 (4-4-0)

FHKSC		Opp.
0	Kearney (Neb.) State	27
40	Northwest Missouri State	27
20	Colorado College	22
40	Southwestern College	0
0	Pittsburg State	54
24	St. Benedict's	38
21	Northwest Oklahoma State	14
19	Washburn University	16

1958 (4-4-1)

FHKSC		Opp.
7	Kearney (Neb.) State	35
13	Northwest Missouri State	0
13	Colorado College	7
21	Southwestern College	0
16	Pittsburg State	7
7	Emporia State	7
0	St. Benedict's	41
6	Washburn University	19
14	Northwest Oklahoma	34

1959 (3-6-0)

FHKSC		Opp.
19	Kearney (Neb.) State	14
8	Northwest Missouri State	13

20	Southwestern College	6
12	Pittsburg State	14
0	Emporia State	26
27	St. Benedict's	45
18	Omaha University	6
12	Washburn University	19
0	Colorado College	47

1960 (2-7-0)

FHKSC		Opp.
20	Kearney (Neb.) State	12
9	Northwest Missouri State	14
19	Colorado College	28
0	Eastern New Mexico U.	25
19	Omaha University	18
7	Pittsburg State	44
14	Emporia State	27
21	St. Benedict's	26
7	Washburn University	33

★ 1961 (4-4-1)

FHKSC		Opp.
24	★ Kearney (Neb.) State	0
16	Northwest Missouri State	17
6	Colorado College	14
19	★ Eastern New Mexico U.	19
0	Omaha University	26
7	Pittsburg State	41
12	★ Emporia State	7
21	★ St. Benedict's	14
14	★ Washburn University	7

★ All victories and ties forfeited; ineligible player used.

1962 (6-2-1)

FHKSC		Opp.
21	Northwest Missouri State	0
33	Colorado College	0
13	Kearney (Neb.) State	27
20	Omaha University	20
25	Pittsburg State	20
13	Emporia State	14
21	St. Benedict's	0
33	Washburn University	14
14	Southwestern Oklahoma State	6

1963 (2-6-1)

FHKSC		Opp.
7	Northwest Missouri	7
0	Colorado Western	42
14	Kearney State	26
6	Omaha U.	39
12	Pittsburg State	42
28	Emporia State	13
18	Southern Colo.	14
0	Washburn U.	46
14	Southwestern Oklahoma	19

1964 (5-4-0)

FHKSC		Opp.
35	Kearney State	14
27	Southwestern Oklahoma	19
7	Colorado Western	23
40	Central Missouri	6
7	Washburn U.	14
20	Emporia State	19
19	Southern Colorado	34
40	Pittsburg State	7
15	Omaha U.	33

/All-Time Scores (Cont'd)**1965 (6-3-0)**

FHKSC	Opp.
7 Southwestern Oklahoma	6
21 Kearney State	13
7 Colorado State	21
40 Central Missouri	14
25 Washburn U.	0
42 Emporia State	7
14 Southern Colorado	24
21 Pittsburg State	7
21 Omaha U.	26

1966 (7-2-0)

FHKSC	Opp.
7 Southwestern Oklahoma	13
20 Kearney State	0
34 Colorado State College	0
29 Northwest Missouri State	7
7 Washburn U.	0
27 Emporia State	13
38 Southern Colorado State	21
12 Pittsburg State	21
19 Omaha University	0

Tie with Pittsburg State for 1st in CIC (3-1)

1967 (3-5-0)

FHKSC	Opp.
20 Southwest Oklahoma	27
7 Kearney State	27
7 Colorado State College	10
Open	
35 Washburn University	0
26 Emporia State	7
14 Southern Colorado State	0
7 Pittsburg State	13
28 Omaha University	32

1968 (2-7-0)

FHKSC	Opp.
33 NW Oklahoma	21
10 Kearney State	29
7 Colorado State College	14
14 Northwest Missouri State	3
6 Washburn University	9
21 Emporia State	41
14 Southern Colorado State	20
13 Pittsburg State College	19
14 Omaha University	32

1969 (0-9-0)

FHKSC	Opp.
6 NW Oklahoma State	34
12 Kearney State	28
6 Colorado State College	53
14 Northwest Missouri State	35
26 Emporia State	41
14 Southern Colorado State	20
13 Pittsburg State	19
6 Washburn University	9
14 University Nebraska	41

1970 (5-5-0)

FHKSC	Opp.
3 NW Oklahoma	27
21 Kearney State	30
28 Pittsburg State	20
27 Washburn University	8
31 Emporia State	42
19 Omaha University	21
43 Southern Colorado	21
56 Panhandle State	14
34 U. of Northern Colorado	55
36 Missouri Southern	29

1971 (2-7-1)

FHKSC	Opp.
37 Missouri Southern	3
7 Northwest Oklahoma	40
21 Kearney State	40
14 Kansas State College Pittsburg	14
10 Washburn University	34
21 Ks. State Teachers Emporia	23
21 U. of Nebraska	27
10 Southern Colorado State	7
35 Panhandle (Okla.) State	36
21 U. of Northern Colorado	42

1972 (1-8-1)

FHKSC	Opp.
15 Missouri Southern	40
21 NW Oklahoma State	21
21 Kearney State	24
16 U. Northern Colorado	45
28 KSC Pittsburg	14
29 Washburn University	31
7 Kansas State College Emporia	27
14 University of Nebraska	24
9 Southern Colorado State	34
7 Colorado School of Mines	37

1973 (5-4-0)

FHKSC	Opp.
14 Missouri Southern	9
17 NW Oklahoma State	20
37 Kearney State	6
14 U. of Northern Colorado	40
26 KSC-Pittsburg	14
14 Washburn University	19
9 KSC-Emporia	15
42 Southern Colorado State	7
35 Colorado School of Mines	0

1974 (1-9-0)

FHKSC	Opp.
18 NW Oklahoma	28
14 Kearney State	26
9 Missouri Southern	10
7 Eastern New Mexico	14
0 U. of Northern Colorado	3
7 KSC-Pittsburg	21
7 Washburn University	14
13 Emporia State College	28
13 Panhandle State	26
28 Southern Colorado State	13

1975 (3-7-0)

FHS	Opp.
20 Northwestern Oklahoma	21
7 Kearney State	10
32 Missouri Southern	24
13 Eastern New Mexico	20
17 Northern Colorado	38
19 Pittsburg State	13
8 Washburn University	27
20 Emporia State	8
21 Panhandle State	22
27 Southern Colorado	31

1976 (5-4-0)

FHS	Opp.
27 Northwestern Oklahoma	44
27 Kearney State	21
21 Missouri Southern	20
21 Southern Colorado	31
14 Missouri Western	9
20 Northern Colorado	48
20 Pittsburg State	19
19 Washburn University	23
6 Emporia State	2

Tie with Kearney State and Missouri Southern for CSIC Championship (5-1)

1977 (3-7-1)

FHS	Opp.
34 Adams State	7
27 Northwestern Oklahoma	31
14 Southern Colorado	42
42 Northwest Missouri	28
22 Missouri Western	25
0 Emporia State	10
29 Pittsburg State	29
35 Missouri Southern	29
17 Wayne State	21
6 Kearney State	26
22 Washburn University	30



Fort Hays State University / **The Athletic Administration**

Dr. Russell Bogue / Chairman of HPERA

Dr. Russell Bogue is in his eleventh year as Director of Health, Physical Education, Recreation and Athletics at Fort Hays State University.

Bogue joined the FHSU faculty in 1968 as an assistant professor of physical education. He is a 1949 graduate of Kearney State College with a bachelor's degree in physical education and recreation.

In 1955 he earned his master's degree from the University of Nebraska and then received his doctorate from the University of Wyoming in 1964.

The Blue Hill, Neb. native began his coaching career at Minden High School where he was head basketball and baseball coach and assistant football coach. In his three years at Minden, his basketball teams compiled a 62-4 record, winning the state championship one season and finishing second in the state and district the other two seasons. He piloted Minden's baseball team to the state runnerup spot two years and was district runnerup one year.

Following his stint at Minden, he moved on to Hastings (Neb.) College serving as head basketball and baseball coach and assistant football coach. Bogue guided Hastings' basketball team to two conference championships as well as participating twice in the NAIA Tournament. In 1956, he was named as the state college coach of the year. His baseball teams won conference crowns two years and took part in the NAIA Playoffs.

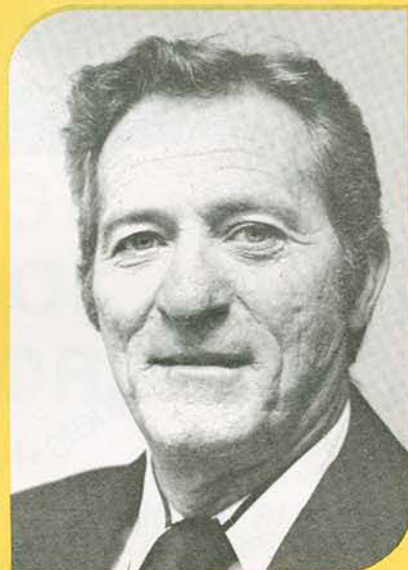
After three years at Hastings, Bogue returned to Minden for three years as the schools's principal.

As an athlete, Bogue was a standout football, basketball and track performer at Shelton High School. He was a four-year basketball letterman at Kearney State. He also turned down three professional baseball contracts.

Bogue believes that the administration and athletic programs at FHSU play big roles in the school's total athletic picture.

"The administration and athletics are working together to project a very positive attitude in athletics in the future at FHSU," Bogue said.

Bogue is married to the former Nancy Snyder of Trinidad, Colo. They have three sons.



Phil Wilson / Director of Athletics

Phil Wilson is in his second year as Director of Athletics at Fort Hays State University after serving as assistant director and baseball coach at Kansas State University since 1972.

A native of Kirkland, Ill., Wilson holds his bachelor's and master's degrees from Kansas State.

The four-year baseball letterman at K-State had a career earned run average of 1.21 as a pitcher.

His Wildcat teams never finished out of the first division during his five years, and his team compiled a 139-110 record, the most victories in the school's history. The 1974 team finished with a 31-16 slate, while the 1976 Wildcats were 39-18.

As an assistant athletic director, Wilson, was responsible for athletic ticket sales, athletic facilities, promotions and the K-State "Steer-A-Year" Club.

The Tiger athletic director has some thoughts on the role of FHSU athletics.

"We are going to try to make all of our sports highly competitive and try to blend athletics even more so into the total university picture," said the 31-year-old Wilson.

Wilson has some goals for the Tiger athletic program.

"Fort Hays State has excellent facilities and people and with these positive factors we will be expanding our range to not only intercollegiate activities, but also interscholastic events," added Wilson. "Athletics is the window through which a large audience can see the University at one time and through which we can present our total University in a positive way."

Wilson is married to the former Venita Felton of Mt. Vernon, Ill. The Wilsons have two daughters, Tammy and Sulynn.

Award Ceremonies • Concerts • Banquets • Homecoming • Scholarships • Recruiting • Attending Events • Receptions

Fort Hays State University



Tiger Club

supports

Athletic Program
in many ways.

★ Become a part of the
FHSU Athletic Program

• FHSU Kickoff •

★ Become a
Tiger Club Member

HAYS DAIRY QUEEN

7th and Riley

The Back Door



Located in Custer Hall's
Basement

FAVORITE FOOD & BEVERAGES

open 'til midnight
after the game!

JUSTIN'S FURNITURE "Your Interior Decorator"

Flex-Steel

Serta

YOUR FULL TIME FURNITURE DEALER

Home of Nationally Advertised Brands
For Everything in Your Home

6th and Main

625-7318

AL'S CHICKENETTE

7th & Vine-Hays

featuring...

- Fried Chicken • Shrimp
- Fish Sticks • Oysters

TUESDAYS-SATURDAY

11:30 A.M.—9:30 P.M.

SUNDAYS

11:30-2:00 & 4:30-8:30

625-7414

W. H. Rymph
625-6058

Bill C. Rymph
625-7678



Joe Norvell
625-7282

Duane Steffen
625-2884

Randy Durr
625-5584

Raymond Moran
434-4855
Plainville

Bite'm Tigers

FOLLETT'S TRADING POST BOOK STORE



*"Serving Students and
Faculty at FHSU"*

Dan's Eating Est.

Open 24 hours daily

*"Food you will enjoy at prices
you can afford"*

625-9429

6th and Vine • Hays
-27 Years of Service-

WE back the Tigers...

**JOHN O.
FARMER, INC.**

Midwestern Tire

Incorporated



Complete Automotive Service, On Farm Tire Service
Alignment and Wheel Balance
Complete Retreading Service

730 East 8th

Hays

628-1071

Name Brands —

BALDWIN
KIMBALL
YAMAHA
CONN
CHICKERING

For "Name Brands" You
Know and Trust

Shop Us For
—Price
—Quality
—Service

A large selection
of Pianos & Organs
to choose from.

Ask about our Piano Rental Plan

HAYS PIANO & ORGAN CO.

10th and Fort St.

Phone 913-625-2624

Hays, Kansas 67601

Free
Delivery

People are our special interest!

Service is our Specialty

New & Used Texts

- Paperback Books
- School Supplies • Sports Gear
- Art Supplies
- T-Shirts & Sweatshirts

All your college needs...

STUDENT BOOK EXCHANGE

The Friendly People Who Save You Money

509 W. 7th • 628-8012

Pizza inn



*America's
Favorite
Pizza*

Noon Luncheon Buffet

All the Pizza & Salad You Can Eat Just \$2.29

Monday to Friday, 11 a.m. to 2 p.m.

Also Serving:

Real Italian Spaghetti, Delicious Submarine Sandwiches, Ham & Cheese, Salami & Cheese, Salad Bar, and Soup of the Day

DELIVERY
SERVICE
CALL
628-2222

Pizza inn
2405 VINE-HAYS

HOURS
Sun - Thurs
11:30 a.m. - 12 p.m.
Fri - Sat
11:30 a.m. - 1 a.m.

Fort Hays State University / The Boosters

BEEF CLUB

Dr. and Mrs. Vinton Arnett
Mr. and Mrs. Kay Auten, Scott City
Bill Barr, Leoti
Mrs. Wayne Beesley, Gove
Mr. and Mrs. James E. Beougher, Gove
Mr. Ardon Berquist, Claflin
Mr. and Mrs. Herschel Betts, Oberlin
Big Valley Conditioners, Larry White, Mgr., Scott City
Mr. and Mrs. Bill Blickenstaff, Scott City
Mr. and Mrs. Raymond Briggs, Gove
Brookover Feed Yard, Inc.,
Earl C. Brookover, Pres., Stan Fansher, Mgr., Garden City
Sam and Forrest Brookover, Scott City
Mr. and Mrs. Harold Burnett, Scott City
Caprock Industries III, Bill Park, Mgr., Leoti
Gus Cauthon, Scott City
G. C. Chemlka, Garden City
Arden Cronn, WaKeeney
Mr. and Mrs. James Deeds, Montezuma
Mr. and Mrs. Robert Deeds, Montezuma
Dr. and Mrs. Jerry Doornbos, Scott City
Keith Elmore, Scott City
Larry Evans, Gove
Mr. and Mrs. Carol Fabrizius, WaKeeney
Mr. and Mrs. Elvin Fabrizius, WaKeeney
Floyd Fairleigh, Scott City
Mr. and Mrs. Brent Frack, Ingalls
Mr. and Mrs. Lloyd Frack, Ingalls
Jack Frick, Scott City
Mr. and Mrs. Darrel Hinkhouse, Palco
Mr. and Mrs. Kenneth Hinkhouse
Albert Hoeme, Scott City

HRC Feedyard, Scott City
Hughes Land & Livestock, Harold Hughes, Mgr., Scott City
Pete Hutchins, Scott City
Kearney County Feeders, Lakin
Pat Koons, Lakin
Lane County Feeders, Jim Meetz, Leoti
Mr. and Mrs. John H. Locke, Natoma
Mr. and Mrs. Harold Lundgren, Gove
Larry Lundgren Herefords, Gove
Delmer Miller, Scott City
Donald Nichol, Utica
Mark Nichol, Utica
Mr. and Mrs. Paul W. Numrich, Scott City
Mr. and Mrs. Arnold W. Prather, Gove
Dr. Jack Reeves, Garden City
Mr. and Mrs. Rich Roemer, Gove
Dr. Dick Spencer, Scott City
Jim and Darlene Thurman, Great Bend
Valley Feeders, Scott City
Chuck Laskey, Bus. Mgr., A. J. Wasinger, Gen. Mgr.
Lon E. Wells, Alexander
Western Cattle Co., Jim Jasper, Dighton
Col. and Mrs. Jack Wilhm
Mr. and Mrs. Phil Wilson
Harold Woods, Dighton

CENTURY

Mr. and Mrs. Lee Albert
Mr. and Mrs. Q. L. Albert, Pueblo, Colo.
Carol Allen
Darryl Apel
Bruce and Susan Armstrong, Haysville

Fort Hays State University / The Boosters

CENTURY (Cont'd)

Mr. and Mrs. Bill Aubel
Mr. and Mrs. Kay Auten, Scott City
Miss Elizabeth Barbour
Baxter Travenol Laboratories
Mr. and Mrs. George Baxter, Russell
Best Western Vagabond
Don Bickle
Mr. and Mrs. Robert F. Blum
Bob Finch and Associates
Dr. and Mrs. Russell Bogue
Boogaarts
Mr. and Mrs. Raymond Boxberger, Topeka
Mr. and Mrs. Donald Branda
Brown's Shoe Fit Co.
Robert B. Brubaker, Bird City
Mr. and Mrs. Clyde Bunker
Al J. Campbell
Earl V. Carlson, M. D.
Dr. C. J. Cavanaugh, Great Bend
Citizens State Bank & Trust Co., Ellsworth
Mr. and Mrs. Glenn Conner, McCracken
Mr. and Mrs. Harold W. Copeland, Boulder, Colo.
James L. Dayton, Portland, Oregon
Dillon Stores
Double AA Sporting Goods, Inc.
William Dunn, Pompano Beach, Fl.
Mr. and Mrs. Norman L. Eaton, Scott City
Ellis State Bank, Ellis
Ellner-Bickle, Inc.
Elmer Fox, Westheimer & Co.
Harry H. Enright
Mr. and Mrs. Sam L. Farmer, Russell
Keith and Doris Faulkner
Mr. and Mrs. Cleo Finch, Natoma
Mrs. Doug Finch
First Federal Savings & Loan Assoc. of Beloit
First National Bank, Cimarron
Mr. and Mrs. Beryl Gerdes, Columbia, Mo.
Mr. and Mrs. Bill Giles
Mr. and Mrs. Charles Gish, Zurich
Dr. and Mrs. Larry R. Good
Duane Goodwin-Goodwin Sporting Goods
Hardman Lumber Co.
Mr. and Mrs. Ken Havner
Hays Planing Mill, Inc.
Holiday Inn, Hays
Mr. and Mrs. Ralph Huffman
Mr. and Mrs. Ralph Hunter
Insurance Planning, Inc.
C. V. Irvin, Winfield
J. C. Penny Co.
Mr. and Mrs. Joseph W. Jeter
Mr. and Mrs. Norman W. Jeter
Mr. and Mrs. William W. Jeter
Dale and Janice Johansen
Josten's—Gary D. Casey
Mr. and Mrs. Art Joy
Mr. and Mrs. James Kellerman
Bruce W. Kent
David M. King and Associates
Kiwanis
KJLS
Mr. and Mrs. William D. Kuhn
Mr. and Mrs. Edward Larson
Dr. and Mrs. W. M. Lathrop
Lessman Garden Center
Mr. and Mrs. Walter Manteuffel
Karen Marshall
Mr. and Mrs. Bernard Martin, Dodge City
Mr. and Mrs. Doug Martin, Salina
Mr. and Mrs. Wayne J. McConnell
Carla McDaniel
Mr. and Mrs. Edgar McNeil
Richard A. Mermis Jr., Denver, Colo.
Mr. and Mrs. Gary Miller, Columbia, Mo.
Mr. and Mrs. Mike Money, Hill City
Lloyd D. Nygaard

Oldham Sales, Inc.
Mr. and Mrs. Albert Pauls, Buhler
Weir Pierson, M. D., McPherson
The Plainville State Bank
Mr. and Mrs. Robert L. Popp, Russell
Jane Rajewski
Joe Rosado
Mr. and Mrs. Thomas Rupp, Salina
Mr. and Mrs. Gregg A. Russell, Wichita
Russell State Bank
S & W Supply Co., Inc.
Mr. and Mrs. Tim Scheck, Russell
Schmidtberger Supply Co., Inc.
Millie Schuster
H. Schwaller & Sons, Inc.
Mr. and Mrs. Gene Seirer, Natoma
Mary Sexton
Shade Construction
Dr. and Mrs. LaVier Staven
Duane Steffen
Tom Stromgren
Student Book Exchange
Suburban, Inc.—Dry Cleaning & Launderers
Mr. and Mrs. Ron Sulzman
Dr. and Mrs. Gerald Tomanek
Mr. and Mrs. Paul F. Van Dyke, Plainville
George Vitztum
Paul D. Wagner, D.D.S.
Mr. and Mrs. Cecil Weigel, Gorham
Penny West
Mr. and Mrs. Kenneth Wheat, Jewell
Mr. and Mrs. Ed Whitney, Norton
Wilson State Bank, Wilson
Mr. and Mrs. Clair J. Wilson



Mr. and Mrs. Wayne Windholz, Russell
Mr. and Mrs. Lester Woods, Hastings, Neb.
Mr. and Mrs. Richard Wunder
Jack Yost, Gorham

ALL-AMERICAN

A & A Coors
Mr. and Mrs. Roy Carmichael, Plainville
Eddy Clinic
John O. Farmer, Russell
Farmers State Bank & Trust Co.
Field Abstract & Title Co.
First National Bank, Hays
Karl Gaston
The Hays Daily News
Hays National Bank
Hays Rotary Club
Heritage Savings Assoc.
Mr. and Mrs. Cliff Holland Jr., Russell
Mr. and Mrs. Ralph Jordan, Russell
KAYS, Inc.
C. W. Lamer, McCracken
Landmark Realty

Midwestern Tire Center—Glen Everhart
Chet Mitchell, Western Springs, Ill.
Northwestern Business Systems
Mr. and Mrs. Verlin Pfeifer, Hill City
Red Coat Restaurant
Mr. and Mrs. Donald L. Roberts, Russell
Mr. and Mrs. Bill Rymph
Mr. and Mrs. W. D. Sellers, Russell
Norman Staab
Mr. and Mrs. Lionel J. Thielen, Russell
The Village Shop
Harry E. Watts, M. D.
Mr. and Mrs. Donovan Williams, Russell
Mr. and Mrs. Roger Williams, Russell
Mr. and Mrs. Anthony H. Witt Jr., Russell
Mr. and Mrs. Donald Woelk, Russell
Woods & Starr & Assoc.—Arch. & Egr.

HALL OF FAME

Allied Inc.
Mrs. C. W. Ball
Ross Beach
Mr. and Mrs. J. B. Collins
Mr. and Mrs. Sam L. Farmer, Russell
Larry Goins, Junction City
Herb Lungren Chevrolet
Mr. and Mrs. George Mollenkamp
Pierce-Schippers Construction Co., Inc.
Service Acid, Inc., N. J. Ruder, Owner
T-L Irrigation Company, LeRoy W. Thom, Hastings, Neb.

Tiger Club

Fort Hays State University / Varsity Football Roster

Name	Pos.	Ht.	Wt.	Class	Hometown	Name	Pos.	Ht.	Wt.	Class	Hometown
Wes Alstatt	PB	6-3	200	So.	Lindsborg	Jim Kaiser	K, LB	6-3	190	Fr.	Claflin
Steve Ayres	LB	6-0	200	Fr.	Superior, NB	Kyle Keeley	K, LB	6-1	200	Fr.	St. John
Kevin Bailey	DT	6-0	200	Fr.	Great Bend	Alan Kirmer	DB	5-9	170	Fr.	Hoisington
Tom Baker	DB	6-1	180	Fr.	Lyons	Gary Kirmer	DB	5-11	180	So.	Claflin
Eddie Beam	QB	6-1	170	Fr.	Esbon	Lynn Koch	OG	6-2	230	Sr.	Ellinwood
Mike Berblinger	DB	5-10	175	Fr.	Sterling	Garry Lewis	WR	5-11	170	Fr.	Kansas City, KS
Curtis Berry	LB	5-11	198	So.	Wichita	Thor Lindshield	TE	6-3	190	Fr.	Powell, WY
Duane Berry	K	5-8	165	Fr.	Bonner Springs	Mike Lybarger	QB	6-1	190	Jr.	Arvada, CO
Greg Black	OG	6-2	215	Fr.	Shreve, OH	Justin Marchel	TE	6-4	235	Jr.	Cimarron
Brent Blau	RB	5-11	165	Fr.	Brewster	Michael Martens	RB	5-11	160	Fr.	Wilmore
Danny Bloedorn	LB	5-10	198	Fr.	Garden City	Andy Mattison	C	6-3	225	So.	Salina
Joe Bloss	RB	5-10	189	Fr.	Beloit	Mike McCarthy	FB	6-0	202	So.	Ellinwood
Bill Bolte	OT	6-4	230	Fr.	Merrick, NY	David Metzler	OG	6-1	220	Fr.	Brewster
Mike Boyd	DB	5-11	160	So.	Grand Island, NY	Kevin Moeder	DB	5-11	170	Fr.	LaCrosse
Scott Brewster	RB	5-9	165	Fr.	Butte, NB	Rick Mondt	QB	6-2	165	Fr.	Kersey, CO
Frank Browning	RB	6-1	180	Fr.	Syracuse	Doug Moore	QB	6-2	180	Fr.	Copeland
Mike Carney	LB	6-2	215	Jr.	Kansas City, MO	Kevin Moore	C	6-1	210	Fr.	Osborne
Todd Carrier	WR	6-0	170	Fr.	Kersey, CO	Mike Moore	QB	6-2	170	Fr.	Pryor, OK
Kirk Cellar	OG	6-2	210	Fr.	Columbia, MO	David Morris	DB	5-11	170	Fr.	Russell
Jerry Certain	DL	6-1	220	Fr.	Lafayette, CO	Robert Nickel	RB	5-10	180	So.	Winona
Mark Chandler	OT	6-3	245	Sr.	Lindsborg	Roger Obermeier	OT	6-3	245	Fr.	Waco, NB
Kent Colwell	OT	6-4	225	Fr.	Alliance, NB	Terry Pasby	DB	5-11	180	Sr.	Elk City
Dean Cornwell	FB	6-1	205	Fr.	Osborne	Rick Peters	DT	6-3	235	Jr.	Kansas City, KS
Tod Crowder	DB	5-10	160	Fr.	Alliance, NB	Louis Pfortmiller	WR	6-1	190	Sr.	Natoma
Kelly Cruise	LB	6-0	215	So.	Wooster, OH	Tom Pollock	DB	6-0	170	Fr.	Liberal
Dennis Dehm	K	6-0	180	So.	Pleasanton, NB	Randy Pottberg	RB	6-0	170	Fr.	Downs
Tom Doll	RB	5-7	170	Sr.	Claflin	Bruce Reifschneider	OG	6-0	195	Fr.	LaCrosse
Stephen Dreier	WR	5-11	175	So.	Hesston	Bruce Renick	DL	6-1	195	Fr.	Ingalls
Gary DuBois	DB	6-1	175	Sr.	West Monroe, LA	Rod Reinick	TE	6-0	190	Fr.	Kersey, CO
Lee Farmer	LB	5-9	165	Fr.	Claflin	Roger Ross	DB	5-10	160	Fr.	Troy
Sam Farmer	DB	6-3	190	Fr.	Russell	Bill Sand	NG	6-1	190	Jr.	Overbrook
Tim Fox	WR	5-10	160	So.	Overland Park	Syd Scherling	DB	5-10	175	Fr.	Smith Center
Craig Fulwider	OG	6-0	205	Fr.	Brewster	Daryl Schultz	QB	6-0	175	Fr.	St. Francis
Rock Gagnebin	K	5-11	190	Jr.	Plevna	Gary Sechrist	DB	5-11	180	So.	Hays
Kevin Gant	OG	6-5	225	Sr.	Council Grove	Rockne Shelite	DB	5-11	160	Fr.	Sharon
Perry Gee	C	5-11	195	Fr.	Russell	Dennis Shipp	WR	6-1	165	Fr.	Ravenna, NB
Terry Georgeson	WR	6-0	180	Jr.	Lenora	Alan Shull	WR	5-11	175	So.	Beloit
Ron German	LB	5-11	190	Jr.	Garden City	Walter Stelzer	DT	6-1	220	Fr.	Farmington, NM
Junior Hartig	LB	6-2	215	So.	Ellinwood	Craig Stephenson	C	6-0	210	Fr.	Watonga, OK
Pat Hedrick	RB	5-9	160	Fr.	Pretty Prairie	Greg Stockhoff	OG	6-1	210	Fr.	Kansas City, KS
Bob Heider	OT	6-4	245	So.	Pleasanton, NB	Lyle Strait	RB	5-11	190	So.	Hesston
Kevin Henry	OG	6-3	210	Fr.	Watonga, OK	Tim Tague	K	6-0	160	Fr.	La Junta, CO
Tom Hersherberger	RB	5-3	145	Fr.	Shreve, OH	Jim Thom	OT	6-3	210	Fr.	Minden, NB
Dell Holder	QB	6-0	180	Fr.	Norwich	Bill Turner	NG	6-0	220	So.	Cozad, NB
Tod Holloway	QB	6-1	175	So.	Farmington, NM	Steven Waugh	DB	5-10	175	Fr.	Osborne
Steve Inslee	NG, OG	5-11	200	Fr.	Medicine Lodge	Mark Winckler	K	6-1	185	Fr.	Sylvan Grove
Jeff Jennings	DT	6-1	235	So.	Kansas City, KS	Jim Wittman	DB	6-0	165	So.	Quinter
Dennis Johnson	OT	6-4	270	So.	Hays	Dave Zook	LB	6-5	205	So.	Hesston
Steve Johnson	LB	6-0	210	So.	Gove						