

Fort Hays State University

FHSU Scholars Repository

Athletic Programs Collection

Archives Online

1962

1962 Fort Hays Kansas State College football brochure

Fort Hays Kansas State College

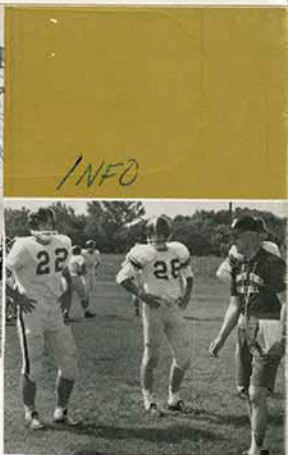
Follow this and additional works at: https://scholars.fhsu.edu/athletic_programs

Recommended Citation

Fort Hays Kansas State College, "1962 Fort Hays Kansas State College football brochure" (1962). *Athletic Programs Collection*. 71.

https://scholars.fhsu.edu/athletic_programs/71

This Brochure is brought to you for free and open access by the Archives Online at FHSU Scholars Repository. It has been accepted for inclusion in Athletic Programs Collection by an authorized administrator of FHSU Scholars Repository.



Football 1962

at

Fort Hays
Kansas State
College



The 1962 Football Brochure

This 1962 Football Brochure has been prepared to aid newspaper, radio, television and college publicity personnel in covering the 1962 football and cross country teams at Fort Hays State College. Information was compiled prior to the season and is therefore subject to change. Such change will be brought to your attention through regular sports news releases from the Fort Hays State News Service.

Visiting journalists, publicists, etc., are invited to visit the FHS campus and are welcome to use facilities and records in the News Service office on the first floor of Martin Allen Hall. Press box facilities are available at Lewis Field Stadium and are explained in more detail in this brochure. The News Service will gladly supply those interested with information about any phase of the college and its activities.

This brochure has been altered considerably in an attempt for continued improvement in the field of sports information. We hope you will find it useful and interesting. For any additional sports information, pictures, movie platforms or other services, please phone, wire or write:

Ted C. Tow
Sports Information Director
Fort Hays State College
Hays, Kansas

Telephone: Office, MArket 4-5611
Ext. 206
Home, MArket 4-6734

On the cover . . .

The cover design of this year's brochure features a collection of photographs symbolizing Fort Hays State football. On the front cover, from the top down: Tiger defensive star Jim Lee reaches to break up a pass; Coach Wayne McConnell talks to his gridders in a practice session; offensive ace Dave Parker runs wide behind good blocking in a 1961 contest; the Bengal bench brigade watches and waits its chance for action; FHS pep club members lead the Tigers on the field before a packed stadium. On the back cover, the entrance to Lewis Field Stadium.

Table of Contents

SECTION ONE — GENERAL

General Information	2
Conference Information	3
History of the College	4
Campus Map	5
Game Broadcasts	5
History of FHS Athletics	6
Athletic Facilities	8
Athletic Program	9
Press Facilities	10
FHS News Outlets	11
Facilities in Hays	12

SECTION TWO — COACHING STAFF

Athletic Department Staff	13
Athletic Director "Busch" Gross	14
Division Chairman Jim Belisle	15
Coach Wayne McConnell	16
Assistant Coach Ed McNeil	17
Graduate, Senior Assistants	18

SECTION THREE — SCHEDULES, STATISTICS

1962 Varsity Schedule	19
1961 Varsity Results	19
1962 Junior Varsity Schedule	19
1961 Junior Varsity Results	19
Game by Game in '61	20
1961 CIC Standings	22
Game by Game Statistics, 1961	22
1962 CIC Schedule	23
1961 Team Statistics	24
1961 Individual Statistics	25
1961 CIC Team Statistics	26
1961 CIC Individual Statistics	27
1961 All-CIC Teams	28

SECTION FOUR — '62 OUTLOOK, PERSONNEL

The Season Outlook	29
The Outlook by Positions	30
The Conference Outlook	31
Where They'll Stay	31
The Tiger Roster	32
Individual Sketches	36
A Look at Each Game	47

SECTION FIVE — THE PAST

Recent Tiger Leaders	56
Recent All-CIC Selections	57
Past Season Records	58
Former Conference Champs	59
Number of CIC Titles Earned	59
All-Time Records, All Opponents	60
All-Time Coaching Records	60
The Past Few Seasons	61
Series Records, Past Opponents	62
FHS Grid Records	64

General Information

Name of School: Fort Hays Kansas State College
1902-1913, Western Branch of the State Normal School

1913-1923, Fort Hays Kansas Normal School

1923-1931, Kansas State Teachers College at Hays

1931-present, Fort Hays Kansas State College

Location: Hays, Kansas (population 11,947 in 1960 census; now estimated at slightly over 12,000). Located in the northwestern quarter of the state, 100 miles west of Salina and 175 miles northwest of Wichita. County seat of Ellis County. Named after Civil War General Alexander Hays, the 95-year-old city is steeped in the history of the late 1800's and is the site of historic old Fort Hays. Served by Union Pacific railroad, Central Airlines, Greyhound and Continental bus lines. Junction of U. S. highways 40 and 183. New Interstate 70 system will run just north of Hays.

Enrollment: 3,500 (Expected, Fall, 1962). Fall enrollment in 1961 was 3,267.

Nickname: Tigers

Colors: Black and Gold. General policy is to wear black uniforms at home and white on the road.

Administration:

Dr. M. C. Cunningham, President

Dr. John D. Garwood, Dean

Dr. Ralph V. Coder, Graduate Dean

Walter E. Keating, Comptroller

Standlee V. Dalton, Registrar, Director of Admissions

Memberships: Central Intercollegiate Conference, National Association of Intercollegiate Athletics

Band: Fort Hays State marching band, directed by Lyle Dilley.

Pep Clubs: Tigerettes, composed of selected upperclass coeds. Kit Kats, open to all freshman coeds.

Stadium: Lewis Field Stadium, built in 1936. Seating capacity 7,000. Located at the southwest edge of the campus.

Conference Information

The Central Intercollegiate Conference was founded in 1928 as the Central Intercollegiate Athletic Conference, with seven founding schools—Fort Hays State, Emporia State, Washburn University, Pittsburg State, Southwestern College, Wichita University and College of Emporia.

FHS, Emporia State, Pittsburg State and Washburn are still members of the league. St. Benedict's joined in 1937. Omaha University is the newest member, joining in 1958 when Southwestern dropped out.

Another former member, in addition to Southwestern, College of Emporia and Wichita U., is Rockhurst College of Kansas City.

The present conference information:

Kansas State Teachers College (Emporia State)

Enrollment anticipated, fall of 1962: 5,000
Emporia, Kansas Population: 16,000

Fort Hays Kansas State College (Fort Hays State)

Enrollment anticipated, fall of 1962: 3,500
Hays, Kansas Population: 12,000

Municipal University of Omaha (Omaha U.)

Enrollment anticipated, fall of 1962: 4,500
Omaha, Nebraska Population: 300,000

Kansas State College of Pittsburg (Pittsburg State)

Enrollment anticipated, fall of 1962: 4,000
Pittsburg, Kansas Population: 20,000

St. Benedict's College

Enrollment anticipated, fall of 1962: 775
(all men)
Atchison, Kansas Population: 14,000

Washburn University of Topeka (Washburn U.)

Enrollment anticipated, fall of 1962: 3,600
Topeka, Kansas Population: 125,000

It's a top-flight conference

. . . that has been proved time and again. The CIC had the championship teams in national small college competition in two fall sports last year, as Pittsburg State won the NAIA football crown and Emporia State took cross country honors. And Fort Hays State was second in cross country. In addition, Pittsburg is the only school to win two NAIA football championships. CIC teams also finished among the top 10 schools in track, bowling, tennis and wrestling in NAIA competition last year.

History of the College

Fort Hays Kansas State College, founded in 1902, marked its 60th birthday in June. The institution is a tax-supported liberal and applied arts college, established and maintained by the state to serve the people of Kansas, and particularly the youth of Central and Western Kansas.

Fort Hays Military Reservation, established in 1867 shortly after the Civil War, was abandoned by the United States government in 1889. For the next 11 years, a proposal for wise use of the land was repeatedly presented to Congress by far-seeing residents of the area. In 1900 the government enacted legislation granting the land to the State of Kansas for three designated purposes: as a state college, as an agricultural experiment station and as a state park. All are now in existence on the land.

The college opened June 23, 1902, with 34 students, two faculty members and 19 courses. For two years the college held its sessions in two old Fort Hays buildings on the fort grounds.

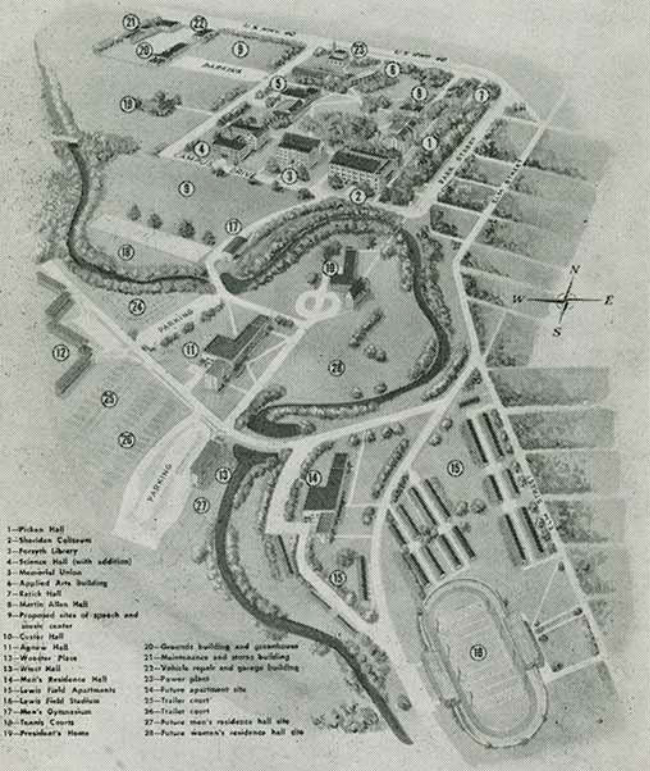
The institution has grown steadily until it now has an estimated 1962 enrollment of 3,500 students and offers more than 700 courses, with about 170 faculty members. This growth is further reflected in a steady building program that includes such recent construction as complete remodeling of several campus structures, an addition to Science Hall, new maintenance buildings and new housing for men and for married students. Now under construction is a six-story women's residence hall that will eventually house some 600 coeds. In various stages of planning are a new library and a speech and music center.

The campus is located immediately to the southwest of the city limits of Hays, on Big Creek, which meanders through the campus. The campus proper consists of about 80 acres, while all of the college land totals 4,160 acres.

Fort Hays State reflects the community and the area in blending new and old, tradition and progress, while serving as the educational and cultural center of Western Kansas.

The Campus

THE CAMPUS OF FORT HAYS STATE



Game Broadcasts

All Tiger football games, at home and on the road, will again be broadcast by KAYS radio, 1400 kilocycles, in Hays. Sports director Keith Cummings, a Fort Hays State graduate and a veteran of several years of Tiger game broadcasting, will be at the microphone, along with Bob Templeton, program director of KAYS radio. The broadcasts are sponsored by the KAYS Sports Booster Club.

Any station wishing to arrange a feed or a special game broadcast should contact Cummings at KAYS, Hays.

History of FHS Athletics

Beginning as the Western Branch of the Normal School in 1902, the college has had athletic activities from the start. Though records, appearing elsewhere in this brochure, are incomplete for the early years, it is known that there was a girls' basketball team and a boys' football team during the first term of the new college. Most of the early games were with town teams and high school teams, and trips were made by railroad or by horsepower—literally.

In the early years, baseball was the major sport at the college.

By 1908, athletic events had been held with Kansas Wesleyan, Bethany College, McPherson College and Washburn, but records of these events are not complete. The first football game in the history of the school was with the Hays town team on Sept. 17, 1902, using the only football in town. The teams practiced at different times to use the ball, and the winner was to keep it. The first game ended in a tie; the second, a week later, was won by the Normal team, 15-0.

The first coaches were volunteers; sometimes they were students who also played on the team. The first was a student, Fred Lindley. The next coach, Harry Kent, was a member of the faculty and played on the college team in town team games. Claude Bice was the first coach and physical education instructor employed by the college for that purpose (1908-1909).

After the college was admitted to the Kansas Conference in 1914, men's athletic teams competed on a par with other Kansas colleges. In 1917 the football team won the school's first ath-

The 1902 Fort Hays State football team



letic championship with seven consecutive victories. It was the only undefeated grid team in the history of the school. The coach was W. G. "Bunt" Speer, and present Athletic Director Paul "Busch" Gross was the team's quarterback. The team won another conference championship in the 1921 football season, with Gross again quarterbacking.

Track gained momentum in the early 1920's and baseball was dropped. It has never been resumed.

A charter member of the Central Intercollegiate Conference in 1928, FHS won its first league football title in 1934, tied for the crown in 1935 and won it again in 1936. These three seasons are the brightest period in FHS grid history.

The basketball squad won its first title in any conference in 1937, finishing in a three-way tie, and won in another three-way tie in 1940. Busch Gross coached both squads.

Tennis was added in 1937, and track continued to gain in importance.

Intercollegiate athletic competition was abandoned during World War II, and following the war, FHS had a new coaching staff—Cade Suran, basketball; Alex Francis, track, and Ralph Huffman, football. Suran and Francis are in their respective positions today, and Huffman, grid coach for 10 years, is an associate professor of industrial arts.

In 1947, Francis brought the first track championship to FHS, winning the CIC cinder title. In 1950, Suran's basketball squad won its first solo CIC cage championship. Francis also developed the school's extensive intramural program during this period, and he heads the program at present.

Following the war, the college's competitive athletic program was enlarged to include swimming, wrestling, golf and cross country, in addition to resuming tennis competition.

During recent years, FHS athletic teams won several championships: football, tie in 1954; basketball, 1959 and 1962; track, 1957; golf, 1960, 1961; swimming, 1957; indoor track, 1959. In addition, the school became active in National Assn. of Intercollegiate Athletics competition. The basketball squad competed in the national championships in 1959 and in 1962, finishing fourth in the 32-team tourney in 1959. The golf, wrestling, cross country and track teams competed in NAIA competition in recent years, with the cross country team twice finishing second in the national meet (1956, 1961).

Athletic Facilities

In addition to Lewis Field Stadium, home of the football and track teams, Fort Hays State has other varied athletic facilities.

Sheridan Coliseum, built in 1915, houses the basketball and gymnastics facilities, in addition to the physical education offices and the K-Club trophy room. Home wrestling meets are held at the coliseum, although the matmen work out in a wrestling practice room at Lewis Field Stadium.

Sheridan Coliseum also includes a swimming pool which is used for phys ed swimming classes. FHS has not had a competitive swimming team for several years as the present facilities are not adequate for competition.

Another gymnasium building, known as "men's gym," is used for physical education classes and some intramural competition. Located south of the coliseum, it was moved from Walker Air Force Base in 1947.

The college tennis courts, eight in number, are located south of the coliseum. Between the courts and the coliseum are the intramural fields, used for softball and touch football as well as for phys ed class activity.

The college golfers use the nine-hole course at Fort Hays Country Club for their meets. It is located southwest of Hays on highway 40 bypass. The golf course is also the site of home cross country meets.

Fort Hays State's new day-night scoreboard



Athletic Program

A well-rounded athletic program spanning the entire nine-month school term is offered at Fort Hays State, with at least two sports under way almost continuously throughout the year.

In the fall, the football team and cross country runners compete in both conference and non-conference competition. The cross country squad is also a top competitor each year in the NAIA national championship race.

Basketball, wrestling and gymnastics are offered through the winter months. The basketball squad competes in conference and NAIA competition. The conference does not offer wrestling and gymnastics activity, so the Tiger teams must maintain non-league schedules in those sports. The wrestling squad enters the NAIA national meet each year. The gymnastics team, being one of the few small-college gym squads in the area, regularly competes with major universities.

Spring sports include track and field, golf and tennis, and all three compete in conference meets. The track and golf teams have been frequent NAIA meet competitors.

The college does not field a baseball team due to a combination of difficulties in travel distances and unpredictable spring weather. The last FHS diamond team was fielded in 1924.

The college's well organized intramural program includes touch football, basketball, volleyball, softball, track and field, swimming, bowling, tennis, golf, badminton, table tennis and horseshoes.

Those wearing the block K

... on the black and gold award jackets are FHS athletic lettermen and members of the K Club, the organization honoring athletic lettermen. The group's purposes are to foster fellowship among the members and to promote athletics. The club also contributes to the scholarship fund by selling concessions at athletic events.

Press Facilities

Adequate facilities are available for both press and radio in the Lewis Field Stadium pressbox. Although the sports information service at Fort Hays State does not control all phases of the pressbox operation, we will do our best to serve you in any way.

Two enclosed booths for radio are available, with KAYS radio in Hays using one for each home game. One large room is used by the press, sports information personnel of the competing schools, and the college personnel who handle the public address system and the scoreboard.

Another enclosed room in the pressbox is commonly called the "President's Box" and is used on occasion by college officials.

A telephone is available in the pressbox; another is available elsewhere in the stadium. Telephone facilities may also be used following the game at Martin Allen Hall on campus.

Official statistical summaries are available to those requesting them at halftime and following the game. Programs, starting lineups, number changes, etc., are also available before the game. Any additional services, such as play-by-play accounts or individual game coverage, are available upon advance request.

Radio stations wishing to broadcast should notify the head of the radio department at FHS to determine available facilities. Stations planning to broadcast must make their own arrangements with the Southwestern Bell Telephone Co. of Hays for a loop. A note to the sports information director would be appreciated, so we can accurately plan our services for that game.

The press box at Lewis Field Stadium



FHS News Outlets

Local news outlets:

KAYS Radio and TV, MArket 4-2578
Keith Cummings, Sports Director

Hays Daily News, MArket 4-3421
Tom Dreiling, News Editor
Published daily except Saturday

Ellis County Farmer, MArket 4-4275
Mike Billinger, Editor
Offset weekly published Thursday

State College Leader, MArket 4-5611, Ext. 301
Norman Brewer, Sports Editor
Student weekly published Thursday

Area news outlets:

Great Bend Daily Tribune
Great Bend, Kansas
Everett Daves, Sports Editor
Published daily except Saturday

(Note: The Tribune will introduce a new morning paper this fall, the Western Kansas Press. Daves will also serve as sports editor of this new five-day-a-week paper and should receive necessary information. The managing editor of the new paper will be Steve M. Blain, 1962 Fort Hays State graduate and student assistant in sports information for part of the 1961-62 school year.)

Salina Journal
Salina, Kansas
Bill Burke, Sports Editor
Published daily

KCKT-TV
Great Bend, Kansas
Tom Parmley, Sports Director
GL 3-7868

Many other Kansas newspapers, radio stations and television stations regularly use information about Fort Hays State, but most of it is supplied by the college News Service. However, a list will be provided upon request.

Facilities in Hays

HOTELS

Brunswick Hotel, 701 Main
Cody Hotel, 218 West Ninth
Lamer Hotel, 1200 Main

MOTELS

Cactus Motel, East Highway 40
El Charro Motel, East Highway 40
Fort Hays Motel, 527 East Eighth
Lamer Motel, East Eighth
Prairie Motel, West Highway 40
Rainbow Motel, East Eighth
Riley Motel, 609 East Eighth
Shamrock Motel, East Highway 40 Bypass
Sunset Motel, 500 East Eighth
Thomas Motel, Fifth and Main
Vine Park Motel, 1308 Vine
Weigel Motel, East Eighth

EATING FACILITIES

A & W Root Beer Drive-In, East Eighth
Al's Chickenette, Highway 183, just off East Eighth
Bert's Cafe, Highway 183 north
Brunswick Hotel Cafe, 701 Main
Centennial Restaurant, 2400 Vine
Dan's Drive-In Cafe, Highway 40 Bypass
A. L. Duckwall Stores, 1103 Main
Garden Grill, 706 Main
The Italian Village, West Highway 40
Kent Cafe, East Eighth
Lamer Hotel Coffee Shop, 1200 Main
Mecca Hamburger House, North Vine
Nick's Cafe, West 11th, just off Main
Pizza Den, 11th and Elm
Robinson's Transport Inn, East Highway 40
Shelly's Trail Grill, 610 East Eighth
Tastee Freez Store, 2412 Vine
Ted's Steak House, 1001 East 15th
Tiger Grill, 704 Park
Varsity Bowl Drive-In, Fourth and Main
Woolworth's, 10th and Main
The Fort Hays State Memorial Union includes a snack bar and a cafeteria.

Athletic Department Staff

Athletic Committee: Wilmont Toalson, assoc. prof. of mathematics, chairman; R. U. Brooks, assoc. prof. of industrial arts; Walter Keating, comptroller; Dr. M. C. Cunningham, president; Dr. Ralph Coder, graduate dean; Paul B. Gross, athletic director; Dr. John D. Garwood, dean; Dr. W. D. Moreland, prof. of political science and sociology; David Riegel, asst. prof. of agriculture.

CIC Faculty Representative: Wilmont Toalson, assoc. prof. of mathematics.

CIC Commissioner: Brice B. Durbin. Mr. Durbin also handles conference publicity and may be contacted at 1816 West 26th, Topeka, Kansas.

Coaching Staff:

Athletic Director Paul B. Gross
Division Chairman, Tennis Coach
..... Dr. James Belisle
Football Coach Wayne J. McConnell
Football Assistant and Gymnastics
Coach Ed McNeil
Basketball Coach Cade Suran
Track and Cross Country Coach
..... Alex Francis
Golf Coach Dr. Joel C. Moss
Wrestling Coach Dr. Walter Kroll

Sports Information:

Director Ted C. Tow
Phone: Office, MArket 4-5611, Ext. 206
Home, MArket 4-6734

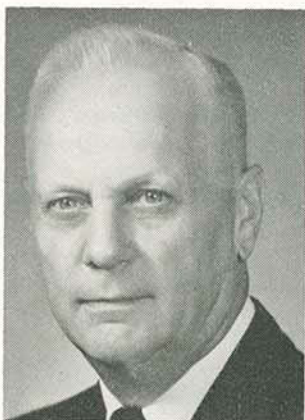
Student Assistant Norman Brewer
Phone, MArket 4-5611, Ext. 206 or 301
Norm Brewer is a sophomore from Carthage, Mo., and a graduate of Belleville (Kans.) High School.

Director of News and Publications
..... R. J. Spangler
Phone: Office, MArket 4-5611, Ext. 206
Home, MArket 4-6060

Requests for general information about the college and any phase of its program except athletics should be addressed to Mr. Spangler.

Memorial Union food service facilities are available for all visiting teams. Contact Director, Memorial Union, for additional information.

Athletic Director Gross



Athletic Director Paul "Busch" Gross, a Hays native, began serving Fort Hays State as an athlete in 1917. With the

exception of a period of eight years as a high school coach, he has served the school ever since and is now in his 33rd year on the faculty.

Busch was a standout quarterback at FHS during the seasons of 1917, 1919, 1920 and 1921 and was an all-state college choice during the first and last of those seasons. His college career was interrupted by a 13-month stint with the field artillery in England and France at the end of World War I.

He was a member of the school's first two athletic championship teams, the 1917 and 1921 title-winning football squads in the old Kansas Conference.

After receiving his degree in 1922, he coached high school athletics for one year at La-Crosse, one year at Howard and six years at Augusta. In 1930 he returned to his alma mater as head basketball coach and co-director of athletics.

In 1935 he assumed full responsibility in the athletic director's post and has controlled FHS athletic efforts since that time. He gave up the head basketball coach position in 1946 when the present coach, Cade Suran, joined the staff.

Busch earned his master's degree at the University of Missouri in 1939 and has done additional graduate work at the University of Illinois, Northwestern University, the State University of Iowa and the University of Michigan.

In 1957 Gross was nominated to the Helms Foundation Hall of Fame for noteworthy achievement in NAIA basketball. The Busch Gross award is now presented annually to the outstanding senior athlete on the FHS campus.

Division Chairman Jim Belisle



Dr. James J. Belisle was named Chairman of the Division of Health, Physical Education and Recreation early in Sep-

tember when Dr. Walter Kroll, chairman for three years, requested a reassignment of responsibilities. Dr. Belisle had earlier been named tennis coach, replacing Richard Burnett who is serving as acting dean of men at FHS.

Dr. Belisle has been an assistant professor of physical education at FHS for two years, handling an extensive class load, including considerable graduate work, in the division.

He is a native of Menomonie, Wisc., where he received his elementary and secondary education. He attended Hamline University for one year before transferring to River Falls (Wisc.) State College, where he earned his bachelor's degree in social science in 1954. He completed his master's and doctorate work at Indiana University, obtaining the latter in 1960. Both graduate degrees are in physical education.

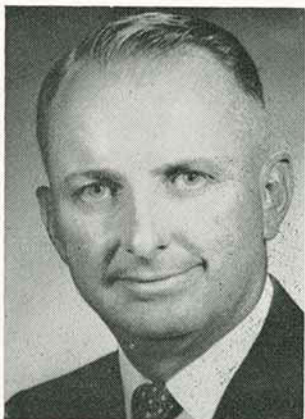
Belisle was an instructor in physical education at Indiana for two years and an assistant instructor in graduate statistics at Indiana another year prior to coming to FHS.

He served in the Army for about two years and was company coach for the athletic program at Seventh Army Headquarters, Stuttgart, Germany.

Belisle is a life member of Phi Epsilon Kappa fraternity at Indiana and is a member of the American Assn. for Health, Physical Education and Recreation. In July he was appointed by the latter organization to serve as national director for student services in the state of Kansas.

Belisle is married, and he and his wife, Marge, have one daughter, Jane, born earlier this year.

Coach Wayne McConnell



Head Football Coach Wayne J. McConnell begins his 20th year of coaching this fall and his seventh season at Fort Hays State.

Prior to coming to FHS, he coached for six years at College of Emporia, where his teams compiled a record of 39 victories, 12 losses and a single tie. His C of E teams were undefeated in 1951, 1953, 1954 and 1955, and McConnell was named Little All-American Coach of the Year by the Rockne Foundation in 1953.

At Fort Hays State, his teams have won 18, lost 33 and tied two games, counting last year's 4-4-1 record in actual play. That season ranks with the 1957 (4-4-0) and 1958 (4-4-1) campaigns as the best in McConnell's six years with the Tigers.

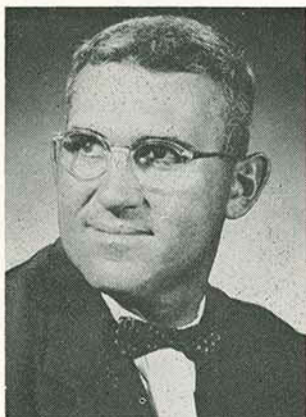
A native of Auburn, Kansas, where he was graduated from high school, Mac earned his bachelor's degree at Washburn University in 1934. He was a social welfare worker in Topeka until 1941, when he entered the Army for two years.

Following the service stint, he taught and coached in high schools for three years at Effingham, one year at Gaylord, two years at Downs and one year at Manhattan before moving to College of Emporia. His coaching record after 19 years stands at 87 victories, 57 defeats and five ties.

Wayne earned his master's degree in administration and guidance and counseling at Emporia State in 1954 and is an assistant professor of physical education on the FHS faculty.

McConnell is married and has two daughters, Denise, 16, and Vicki, 12.

Assistant Coach Ed McNeil



Edgar F. McNeil, Tiger assistant coach, is beginning his 11th season of coaching with Wayne McConnell. The two coached

together for five years at College of Emporia and have been together for five years at FHS.

Between the C of E and FHS jobs, Ed coached for two years at the University of North Dakota.

McNeil serves as line coach and does much of the scouting for the Tigers. He also is head gymnastics coach during the winter months and is an assistant professor of physical education.

A native of Horton, Ed was graduated from high school at Effingham. He earned his bachelor's and master's degree at Kansas State, where he was a third-team All-America selection as a tackle.

He served in the Air Force for more than three years. Mac is married and has two children, Marcia, 10, and Glen, 8.

Graduate Assistants Whitey Alpers, Dale Williams



Graduate, Senior Assistants

Graduate Assistant Dale Williams

Dale Williams, a 1960 FHS graduate, will assist with the varsity coaching chores, particularly with the ends and linemen.

A native of Florence, Dale earned four college football letters—one at Hutchinson Junior College in 1956 and three at Fort Hays State, in 1957, 1958 and 1959. He played end all four years. He was a Tiger starter, offensively or defensively, during most of his three seasons of competition here.

After graduation, Dale joined the Hays High School coaching staff. He served as a varsity assistant one year and coached the freshman team to a 5-0-1 record one year. He is working on his master's degree in physical education and educational administration this year.

Graduate Assistant Warren Alpers

Warren "Whitey" Alpers, a 1957 FHS grad, will serve as junior varsity coach and assist with the varsity this season. During pre-season practice, he worked primarily with backfield candidates.

Whitey is a native of Hudson and earned two football letters as a halfback at Fort Hays State. He was a Tiger squad member all four years, from 1953 through 1956, and is remembered as a tough little (5-8, 146) competitor.

Whitey has been coach of all sports at Republic for the past five years. His 1961 football squad, playing six-man ball, was undefeated in nine games. His five-year basketball record is 74 victories and 33 defeats. He is getting his master's degree in physical education and junior high school administration at FHS.

Senior Assistant Don Schrock

Don Schrock, completing requirements for his bachelor's degree this fall, lettered as a starting end the past two seasons for Coach McConnell. Prior to enrolling at FHS, he lettered twice at Fairbury (Neb.) Junior College.

Don will assist Alpers with the junior varsity in addition to helping with varsity chores this season.

1962 Varsity Schedule

Date	Opponent	Place	Time
Sept. 22	NW Missouri	Hays	7:30
Sept. 29	Colorado College	Hays	7:30
	Band, Parents Night		
Oct. 6	Nebraska State	Kearney	7:30
Oct. 13	*Omaha U.	Omaha	2:00
Oct. 20	*Pittsburg State	Hays	2:00
Oct. 27	*Emporia State	Emporia	2:00
	Homecoming		
Nov. 3	*St. Benedict's	Atchison	8:00
Nov. 10	*Washburn U.	Hays	7:30
	Guest Night		
Nov. 17	SW Oklahoma	Weatherford	8:00
*Conference game		All times CST	

1961 Varsity Results

Score	Place, Attendance
FHS 24 Nebraska State	0 Hays; 4,000
FHS 16 NW Missouri	17 Maryville; 3,200
FHS 6 Colorado College	14 Colo. Spgs.; 4,000
FHS 19 ENMU	19 Hays; 4,500
FHS 0 Omaha U.	26 Hays; 6,500
FHS 7 Pittsburg State	41 Pittsburg; 13,000
FHS 12 Emporia State	7 Hays; 7,000
FHS 21 St. Benedict's	14 Hays; 1,000
FHS 14 Washburn U.	7 Topeka; 1,200
-----	-----
119	145
	Total: 44,400

Record: 4-4-1

All victories and the tie were forfeited at the end of the season when FHS discovered it had unknowingly used an ineligible player.

1962 Junior Varsity Schedule

Date	Opponent	Place	Time
Sept. 24	Emporia State JV	Hays	2:00
Oct. 8	Nebraska State JV	Hays	2:00
Oct. 22	Nebraska State JV	Kearney	2:30

The Tiger junior varsity is made up primarily of freshmen. A few upperclassmen who lack substantial college football experience may also see jayvee action. A jayvee roster will be available before each game.

1961 Junior Varsity Results

Score	Place
FHS 19 Emporia State JV	0 Emporia
FHS 7 Nebraska State JV	0 Hays
FHS 20 Nebraska State JV	33 Kearney
-----	-----
46	33

Record: 2-1-0

Game by Game in '61

Kearney—FHS opened its season at home with a decisive 24-0 victory over the Kearney Antelopes, scoring 18 points in the second period and holding the Nebraskans in midfield through much of the game. Dave Parker sparked the triumph by rushing for 105 yards and passing for 87 more, scoring one TD and passing for two others. The victory was costly, however, as all-conference end Cliff Leiker reinjured a knee and was lost for the season.

NW Missouri—FHS lost to the Bearcats at Maryville, 17-16, in a game that saw every possible method of scoring in football. FHS led, 10-7, in the second quarter on the strength of Don Schrock's 39-yard field goal. But the home team scored another TD and a safety and wound up with the one-point victory. All 17 of the winners' points came in the second quarter. Parker was the top Tiger threat with 101 yards.

Colorado College—The second quarter was the Tigers' downfall again at Colorado Springs, as the home team scored 14 points in that frame and took a 14-6 decision. FHS lost one TD on a disputed offside penalty and had four passes intercepted to nullify all other threats. Parker was given rough treatment by his former CC teammates, so freshman fullback Steve Worley took over the offensive load with 83 yards in 18 carries.

Eastern New Mexico—The ENMU passing attack and the FHS rushing attack battled to a 19-19 standstill at Hays. Parker put on a dazzling performance, scoring all three Tiger TDs and rushing for 140 yards. But the New Mexicans' Sonny Wiginton passed for 145 yards to offset the home efforts. Greyhound halfback Fred Shaw ran the opening kickoff back 95 yards to put the Tigers in the hole from the start, but they surged back to hold a 19-12 lead going into the final quarter.

Omaha—The visiting OU Indians ran up a staggering 477 yards in total offense in downing the Bengals, 26-0, in the FHS Band and Parents Night game. It was the first conference game of the season for both. The speed of OU sprint star Roger Sayers and the smart quarterbacking of Wyoming transfer Carl Meyers produced the decisive OU triumph, as Sayers rushed for 129 yards and Meyers passed for 117. Parker gained 121 yards rushing but couldn't take up the slack.

Pittsburg—FHS became the first team in the '61 season to score on the Pitt Gorillas, who went on to win 11 straight games and the national small college championship. Wayne Schumacher got the first score to cap a 93-yard march through the vaunted Pitt defense. But the Gorillas smashed back for a 41-7 victory before a Pitt Homecoming crowd of 13,000. All-league fullback Gary Snadon racked up 115 yards rushing and all-league quarterback Phil Vogrin passed for 143 and rushed for 79 to bury the Bengals.

Emporia—FHS won its first Homecoming game since 1958 by edging E-State, 12-7, thus starting the three-game winning streak that ended the season. A capacity crowd of 7,000 saw the Tigers come from behind in the final period to win as Parker dashed for the touchdown with 5:45 to play. Sophomore Ron Schumacher recovered an E-State fumble and the home forces were on the visitors' two-yard line again when the game ended. Parker raced for 121 yards and Wayne Schumacher added 101.

St. Benedict's—The Tigers capitalized on Raven fumbles to earn a 21-14 victory in the final home game of the season. Wayne Schumacher, playing the final home game of his career, got the winning score with 9:05 to play. He paced the Tiger attack with 107 yards rushing. Linebacker Jim Lee grabbed one of seven Raven fumbles in mid-air and romped 55 yards for FHS's first score after they trailed, 7-0, at half-time.

Washburn—The Tigers took third place in the conference, evened their season record at 4-4-1 and copped their third straight victory by punching out a 14-7 decision over the WU Ichabods at Topeka. Parker, playing with multiple injuries, guided the FHS attack, and Worley churned out 91 yards on 22 carries to pace the offense. FHS did not attempt a pass—the Tigers completed a total of one pass in seven attempts in their final three games of the season.

Post-mortem—In February, FHS announced it was forfeiting its four victories and one tie during the 1961 season because the team unknowingly used an ineligible player. The player, Merle Dupont, a defensive end and linebacker, did not declare on his application for admission that he had attended Sterling College for several weeks, playing in two football games. His next enrollment was at Fort Hays State, constituting a breach in eligibility rules requiring a transfer to have one semester of residence before playing.

1961 CIC Standings

BEFORE

Team	W	L	T	Pts.	Opp.
Pittsburg State	5	0	0	176	25
Omaha University	4	1	0	131	79
Fort Hays State	3	2	0	54	95
St. Benedict's	2	3	0	72	94
Emporia State	1	4	0	54	103
Washburn University	0	5	0	41	132

AFTER

Team	W	L	T
Pittsburg State	5	0	0
Omaha University	4	1	0
St. Benedict's	3	2	0
Emporia State	2	3	0
Washburn University	1	4	0
Fort Hays State	0	5	0

The "before and after" approach refers to Fort Hays State's forfeiture of three conference victories after the season ended, when it was learned that FHS had unknowingly used an ineligible player. Both standings are presented here for two reasons: first, to show the actual outcome of the games and the total scoring; second, to prevent confusion, as some schools are listing the standings as they were before the forfeits.

Game by Game Statistics, 1961

Game	Rushing		Passing		Total Offense	
	FHS	Opp	FHS	Opp	FHS	Opp
Kearney	203	147	87	72	290	219
NW Missouri	246	222	31	17	277	239
Colorado College	166	167	49	47	215	214
E. New Mexico	304	96	0	145	304	241
Omaha	217	325	14	152	231	477
Pittsburg	169	332	35	159	204	491
Emporia	277	124	9	79	286	203
St. Benedict's	181	172	0	76	181	248
Washburn	196	173	0	87	196	260

1962 CIC Schedule

Saturday, Sept. 15

Lincoln U. (Mo.) at **Emporia State**
Omaha U. at Morningside (Iowa)
SW Missouri at **Pittsburg State**
Colorado College at **Washburn U.**

Saturday, Sept. 22

SW Missouri at **Emporia State**
NW Missouri at **Fort Hays State**
Omaha U. at Colorado State (Greeley)
Pittsburg State at Central Missouri
Washburn U. at NE Missouri

Saturday, Sept. 29

Emporia State at Central Oklahoma
Colorado College at **Fort Hays State**
Bradley U. at **Omaha U.**
Missouri Mines at **Pittsburg State**
St. Benedict's at SE Missouri
Washburn U. at Central Missouri

Saturday, Oct. 6

Central Missouri at **Emporia State**
Fort Hays State at Kearney (Neb.) State
Northern Illinois at **Omaha U.**
Pittsburg State at NE Missouri
St. Benedict's at SW Missouri
Washburn U. at Colorado Mines

Saturday, Oct. 13

Emporia State at **Washburn U.**
Fort Hays State at **Omaha U.**
Pittsburg State at **St. Benedict's**

Friday, Oct. 19

St. Benedict's at **Washburn U.**

Saturday, Oct. 20

Emporia State at **Omaha U.**
Pittsburg State at **Fort Hays State**

Saturday, Oct. 27

Fort Hays State at **Emporia State**
Omaha U. at **St. Benedict's**
Washburn U. at **Pittsburg State**

Friday, Nov. 2

Omaha U. at **Washburn U.**

Saturday, Nov. 3

Emporia State at **Pittsburg State**
Fort Hays State at **St. Benedict's**

Saturday, Nov. 10

St. Benedict's at **Emporia State**
Washburn U. at **Fort Hays State**
Pittsburg State at **Omaha U.**

Saturday, Nov. 17

Fort Hays State at SW Oklahoma
St. Benedict's at William Jewell

Conference teams in bold type

1961 Team Statistics

RUSHING OFFENSE

	FHS	OPP
Rushing plays	489	417
Net yardage rushing	1959	1758
Average gain per play	4.0	4.2
Average gain per game	217.7	195.3

PASSING OFFENSE

Passes attempted	69	115
Passes completed	18	51
Had intercepted	7	6
Touchdown passes	2	4
Net yardage passing	225	834
Average gain per play	3.3	7.3
Average gain per game	25.0	92.7
Completion percentage	26.1	44.3

TOTAL OFFENSE

Total plays	558	532
Net yardage gained	2184	2592
Average gain per play	3.9	4.9
Average gain per game	242.7	288.0

FIRST DOWNS

Total first downs	118	134
By rushing	101	100
By passing	9	29
By penalty	8	5

PUNTING

Number of punts	47	37
Average per punt	31.7	32.9

PUNT RETURNS

Number of returns	12	26
Average per return	7.9	4.8

KICKOFF RETURNS

Number of returns	24	26
Average per return	22.4	16.8

FUMBLES

Total fumbles	22	35
Ball lost on fumbles	9	18

INTERCEPTIONS

Number of interceptions	6	7
Average per return	1.3	12.3

PENALTIES

Number of penalties against	44	40
Total yards penalized	335	399

TEAM SCORING

Touchdowns	18	21
Field goals	1	0
Safeties	0	1
Extra points	8	16*
Total points scored	119	145

*Includes one two-point play.

1961 Individual Statistics

TOTAL OFFENSE				Plays	Rushing	Passing	Net Gain				
Dave Parker, QB-HB				190	759	169	928				
Wayne Schumacher, HB				165	573	14	587				
Steve Worley, FB				111	413	0	413				
Jerry Brown, FB				30	88	0	88				
Jim Lee, HB				14	58	0	58				
George Daniels, QB				19	4	27	31				
Derryl Franz, FB				5	26	0	26				
Larry Bates, QB-HB				8	23	0	23				
Mike Engel, QB				10	4	15	19				
Ken Belisle, HB				3	9	0	9				
Clayton Williams, HB-E				2	8	0	8				
Tom Gibson, E				1	-6	0	0				
RUSHING				TC	YG	YL	Net	Avg.			
Dave Parker, QB-HB				143	834	75	759	5.3			
Wayne Schumacher, HB				162	654	81	573	3.5			
Steve Worley, FB				111	424	11	413	3.7			
Jerry Brown, FB				30	91	3	88	2.9			
Jim Lee, HB				14	59	1	58	4.1			
Derryl Franz, FB				5	26	0	26	5.2			
Larry Bates, QB-HB				7	23	0	23	3.3			
Ken Belisle, HB				3	9	0	9	3.0			
Clayton Williams, HB-E				2	8	0	8	4.0			
George Daniels, QB				5	12	8	4	0.8			
Mike Engel, QB				6	13	9	4	0.6			
Tom Gibson, E				1	0	6	-6	-6.0			
PASSING				PA	PC	PI	YDS	TD	Pct.		
Dave Parker, QB-HB				47	14	3	169	2	29.8		
George Daniels, QB				14	2	4	27	0	14.3		
Mike Engel, QB				4	1	0	15	0	25.0		
Wayne Schumacher, HB				3	1	0	14	0	33.3		
Larry Bates, QB-HB				1	0	0	0	0	0.0		
PASS RECEIVING							PR	YDS	TD		
Wayne Schumacher, HB							5	59	1		
Don Schrock, E							3	81	1		
Clayton Williams, HB-E							3	21	0		
Dave Parker, QB-HB							2	31	0		
Jim Lee, HB							2	10	0		
Bill Walters, E							1	15	0		
Charlie Williams, E							1	9	0		
Jerry Brown, FB							1	-1	0		
PUNTING							TP	YDS	Avg.		
Steve Worley, FB							7	243	34.7		
Jim Sellens, E							22	711	32.3		
Dave Parker, QB-HB							17	535	31.5		
PUNT, KICKOFF RETURNS							PR	Avg.	KOR	Avg.	
Dave Parker, QB-HB							7	10.4	17	24.8	
Wayne Schumacher, HB							2	8.5	1	11.0	
Clayton Williams, HB-E							1	0.0	1	21.0	
Ken Belisle, HB							1	2.0	1	16.0	
Tim Daniels, FB									1	21.0	
Steve Worley, FB									1	18.0	
Jim Lee, HB									1	15.0	
Don Schrock, E									1	13.0	
Larry Bates, QB-HB							1	3.0			
SCORING							TD	EPA	EPM	FG	TP
Dave Parker, QB-HB							9	1	0	0	54
Wayne Schumacher, HB							3	0	0	0	18
Don Schrock, E							1	7	4	1	13
Steve Worley, FB							2	0	0	0	12
Jerry Brown, FB							2	0	0	0	12
Jim Lee, HB							1	0	0	0	6
Jim Baird, T							0	5	4	0	4
Clayton Williams, HB-E							0	3	0	0	0
Bob Lorbeer, E							0	1	0	0	0

1961 CIC Team Statistics

(NOTE: The following figures are for the regular season and do not include Pittsburg State's two post-season games.)

RUSHING OFFENSE	G	Yards	Game Avg.
Pittsburg State	9	2393	265.9
Fort Hays State	9	1959	217.7
Omaha U.	9	1935	215.0
St. Benedict's	9	1553	172.5
Washburn U.	9	1484	164.9
Emporia State	9	1301	144.5

RUSHING DEFENSE	G	Yards	Game Avg.
Omaha U.	9	1255	139.4
Pittsburg State	9	1357	150.8
Washburn U.	9	1732	192.4
Fort Hays State	9	1758	195.3
St. Benedict's	9	1760	195.5
Emporia State	9	2383	264.7

PASSING OFFENSE	G	Att.	Comp.	TDs	Yards	Game Avg.
Pittsburg State	9	131	73	8	1019	113.2
Omaha U.	9	126	55	8	785	87.2
St. Benedict's	9	116	41	2	640	71.1
Washburn U.	9	136	52	3	632	70.2
Emporia State	9	104	45	6	603	65.3
Fort Hays State	9	69	18	2	225	25.0

PASSING DEFENSE	G	Att.	Comp.	TDs	Yards	Game Avg.
St. Benedict's	9	86	37	4	420	46.6
Pittsburg State	9	133	58	1	518	57.6
Fort Hays State	9	115	51	4	834	92.7
Washburn U.	9	130	57	12	894	99.3
Emporia State	9	121	66	6	917	101.8
Omaha U.	9	144	63	7	946	105.1

TOTAL OFFENSE	G	Rush.	Pass.	Yards	Game Avg.
Pittsburg State	9	2393	1019	3412	379.1
Omaha U.	9	1935	785	2720	302.2
St. Benedict's	9	1553	640	2193	243.6
Fort Hays State	9	1959	225	2184	242.6
Washburn U.	9	1484	632	2116	235.1
Emporia State	9	1301	603	1904	211.5

TOTAL DEFENSE	G	Rush.	Pass.	Yards	Game Avg.
Pittsburg State	9	1357	518	1875	208.3
St. Benedict's	9	1760	420	2180	242.2
Omaha U.	9	1255	946	2201	244.2
Fort Hays State	9	1758	834	2592	288.0
Washburn U.	9	1732	894	2626	291.8
Emporia State	9	2383	917	3300	366.6

1961 CIC Individual Statistics

(NOTE: The following figures are for the regular season and do not include Pittsburg State's two post-season games.)

TOTAL OFFENSE	G	Plays	Yards	Game Avg.
Phil Vogrin, Pitt	9	168	1143	127.0
Dave Parker, FHS	9	190	928	103.1
Carl Meyers, OU	9	177	845	93.8
Roger Sayers, OU	9	73	707	78.5
Corky Jacobs, St. B.	9	139	650	75.5
Bill Presson, Pitt*	9	89	613	68.1

RUSHING	G	Plays	Yards	Game Avg.
Dave Parker, FHS	9	143	759	84.3
Roger Sayers, OU	9	73	707	78.5
Bill Presson, Pitt*	9	89	613	68.1
Louis Miloni, OU	9	103	592	65.7
Wayne Schumacher, FHS*	9	162	573	63.7
Dick Colliver, Pitt*	9	101	530	58.9

PASSING	G	Att.	Comp.	Yards	Game Avg.
Phil Vogrin, Pitt	9	108	64	902	100.2
Carl Meyers, OU	9	97	49	705	78.3
Tom Hallacy, WU*	8	86	32	406	50.7
Harold Blowey, ES*	9	56	25	422	46.8
Corky Jacobs, St.B.	9	63	22	355	39.4

SCORING	G	TD	EP	Points
Gary Snadon, Pitt*	9	11	0	66
Bob Fulton, Pitt	8	10	0	60
Roger Sayers, OU	9	10	0	60
Dave Parker, FHS	9	9	0	54
Phil Vogrin, Pitt	9	3	35	53
Louis Miloni, OU	9	7	0	42
Carl Meyers, OU	9	4	13	37

PASS RECEIVING	G	Catches	Yards
Paul Blazeovich, OU	9	30	446
Bruce Roach, Pitt*	9	16	226
Tom Gosch, Pitt*	9	16	197
Bob Fulton, Pitt	8	12	216
Reuben Early, ES	9	12	122
Ralph Smith, WU	9	11	127

PUNTING	G	Punts	Avg.
Dale Greiner, ES*	9	36	34.4
Paul Blazeovich, OU	9	33	34.0
Corky Jacobs, St.B.	9	40	33.7

*Graduated

1961 All-CIC Teams

FIRST TEAM

- E Paul Blazeovich, Omaha U.
- E Bruce Roach, Pittsburg State *
- T Richard Beal, Pittsburg State *
- T Harlan Hess, Pittsburg State
- G Duane Salak, Omaha U.
- G Eddie Carter, Pittsburg State
- C Jerry Archer, Pittsburg State
- B Phil Vogrin, Pittsburg State
- B Gary Snadon, Pittsburg State *
- B Louis Miloni, Omaha U.
- B Roger Sayers, Omaha U.

SECOND TEAM

- E Tom Gosch, Pittsburg State *
- E Jim Meyer, Emporia State
- T Jack Peterson, Omaha U.
- T Jim Baird, Fort Hays State**
- G Bill Beeson, Pittsburg State *
- G Fred Wiese, St. Benedict's
- C Art Ferguson, Omaha U. *
- Bill Maus, St. Benedict's
- B Dave Parker, Fort Hays State**
- B Bill Presson, Pittsburg State *
- B Carl Meyers, Omaha U.
- B Wayne Schumacher, Fort Hays State ***

HONORABLE MENTION

Ends: Dave Herne, St. Benedict's*; Ralph Smith, Washburn U.; Larry Kramer, Pittsburg State*. Tackles: Larry Kaminsky, St. Benedict's; Bill Favrow, Emporia State*; **Ron Gardner, Fort Hays State**; Pat Moran, St. Benedict's. Guards: **Larry Dreiling, Fort Hays State**; Gary Peterson, Washburn U.*; **Kirk Pope, Fort Hays State**; Tom Spiewak, Pittsburg State; **Jim Sanderson, Fort Hays State**; George Jesko, Omaha U.; Nip Shepard, Pittsburg State*.

Centers: Ken Elliott, Washburn U.; **Jerry Strecker, Fort Hays State**; Lewis Holmes, Pittsburg State*. Backs: Bob Fulton, Pittsburg State; Harold Blowey, Emporia State*; John McGlinn, St. Benedict's*; **Steve Worley, Fort Hays State**; **Jim Lee, Fort Hays State**; Wayne Backes, Omaha U.; Reuben Early, Emporia State; Jon Bingesser, Washburn U.*; Corky Jacobs, St. Benedict's; Dick Colliver, Pittsburg State*; Mike Harris, St. Benedict's; Bob Ogle, Washburn U.*; Archie Ringgenberg, Pittsburg State*; Chuck Sturdevant, Pittsburg State; Jim Anderson, Emporia State.

* Graduated

The Season Outlook

Football prospects at FHS are "the brightest in years," according to Coach Wayne McConnell, beginning his seventh season as head coach.

McConnell points to the 21 lettermen returning—17 from last year's squad and four who last lettered in 1960—and the loss of only four lettermen from the 1961 team. Missing will be two regulars, veteran halfback Wayne Schumacher and rugged end Don Schrock; a part-time starter, fullback and defensive end Jerry Brown, and a substitute, quarterback Mike Engel.

But FHS will be in a position to field experienced gridders at every spot in the lineup this fall, with juniors and seniors heading the list of candidates at nearly every position. In recent years, Tiger football fortunes have had to rest on the shoulders of many freshmen and sophomores without extensive college grid experience.

A turnout of about 80 was expected for opening pre-season workouts—the largest pre-season roster in several seasons. The transfers and a number of top freshman prospects are expected to put the pressure on lettered players in the bid for varsity berths.

Prior to the opening of practice, McConnell listed several strong points or areas of improvement for his 1962 team: a tough, experienced interior line, with a total of nine lettermen at the tackle, guard and center spots; "pretty fair" back-field prospects, especially with Dave Parker, the top conference rusher last fall, back in the fold, and potentially improved passing, with two-time all-CIC end Cliff Leiker ready for action after sitting out the '61 campaign with a knee injury.

On the other side of the ledger, the Bengal mentor pointed out these possible weaker phases: a lack of depth in experienced ends, particularly on defense; lack of depth at quarterback, where transfers or freshmen will have to add strength, and a lack of proven defensive backs, although the return of senior Jim Lee will again give FHS the top college linebacker in the area.

The quarterback spot could be the key. If one of the newcomers can fill the bill, Parker and Larry Bates can concentrate on their natural half-back position. Both had to be used at quarterback last fall, with Parker the starter throughout the season.

Summing up the prospects, McConnell says his '62 charges should be "above average." But he joins the other CIC coaches in pointing to the improved brand of football to be expected in the league this fall. And in non-conference games, FHS will have to offset the lack of spring practice, outlawed by the conference last year.

The Outlook by Positions

END—Good

Offensively, end prospects are good to excellent with the return of pass receiving expert Cliff Leiker, who grabbed 29 passes in 1960. Lettermen Chuck Williams, George Daniels and Bill Walters will also add experience; all have seen some starting duty. Defensively, prospects look good if new candidates come through. Dale Perry, who played spring ball in 1961 and was ineligible last fall, could be a top newcomer.

TACKLE—Excellent

Four lettermen return, including last year's starters, Jim Baird and Ron Gardner. Ron Schumacher saw considerable defensive action last fall, and Clark Engle was a top freshman performer in 1960. Baird and Gardner have lettered and started most of the past three seasons.

GUARD—Good

Perhaps excellent offensive guard outlook, with last year's top three, Larry Dreiling, Kirk Pope and Jim Sandersen, all returning. All earned all-CIC honorable mention. Jack Hazlett, an all-state prep lineman at Minneapolis (Kans.) in the mid-1950's, could help. Karl Leiker has gained experience as a squadman the past two seasons.

CENTER—Good

Three-time letterman Jerry Strecker is the returning starter, making the offensive center outlook strong. He'll be backed up by letterman Ken Palmgren, who lettered at tackle in 1960. After these two, newcomers must come through.

QUARTERBACK—Good to Excellent

The 1961 starter, Dave Parker, will be back. He was second in the conference in total offense last year. Passing should improve with the return of Leiker to improve receiving; otherwise passing could be a big question mark. Larry Bates, who filled in for Parker late last fall, will get a good trial at quarterback. Two transfers, Royce Hamala and Jim Hill, might fill the bill. Dwight Gillespie was a squadman last season, and Don Staab played spring ball in 1961.

HALFBACK—Fair to Good

Offensive halfback prospects depend a great deal on who does the quarterbacking, as both Parker and Bates can play either position. Clayton Williams, who has moved between end and halfback the past two seasons, and three-time letterman Jim Lee are the other returnees. Lee assures FHS of having the top college linebacker in the area again. Hamala, a junior college All-American fullback at McCook, Neb., will be tried at half; he has both size (200) and speed (10.2 for the 100). Ross Deewall and Kent DeHaven are transfers who should fit in. Defensively, the question mark appears again. All candidates will get a good look on the defensive units.

FULLBACK—Good to Excellent

The 1961 starter, Steve Worley, is back after his outstanding freshman season. Two other lettermen, Derryl Franz and Tim Daniels, are experienced. Ken Wittreich, Ed Olson and A. J. Cochran are transfers with top credentials.

The Conference Outlook

Tiger Coach Wayne McConnell sees a two-team battle for the Central Intercollegiate Conference championship this fall, with defending national small college champion Pittsburg State and veteran-packed Omaha U. fighting for the top spot. The same two teams finished 1-2 last fall, with Pitt's 34-18 victory in the final regular season game the deciding factor.

OU lost only one starter and keeps its entire potent backfield, in addition to picking up a number of promising transfers. Pitt lost 13 lettermen from the team that charted 11 consecutive victories en route to the Camellia Bowl title, but returns top-notch performers at nearly every position.

McConnell labels his own Tigers and the St. Benedict's Ravens as possible darkhorses. The Ravens experienced a rocky start last year and had only a 3-6 record, but finished strong. FHS won its final three games, all in the conference, before having to forfeit. The Tigers were only 12 points away from a 7-2 season, considering the scores of the Northwest Missouri (17-16), Colorado College (14-6) and Eastern New Mexico (19-19) games.

Washburn and Emporia will both be improved, McConnell believes, and could finish higher than expected. The Ichabods have a new coach, former Drake assistant Ellis Rainsberger, but only a handful of lettermen. E-State Coach Keith Caywood expects improvement with 16 lettermen back, but points to the overall improvement in the conference.

The one thing all coaches in the CIC seem to agree upon as they move into the new season is that the '62 campaign should see the conference at its strongest. An improved team may not necessarily improve its 1961 conference showing, due to the improvement throughout the league.

Where They'll Stay

The following arrangements have been planned for hotel or motel facilities on road trips for the 1962 Tigers:

Kearney—no overnight; will return to Hays after game.

Omaha—Tower Courts tentative, night of Oct. 12; return to Hays after game.

Emporia—Ranch House Motel, night of Oct. 26; return to Hays after game.

Atchison—Jayhawk Motel in Topeka, nights of Nov. 2 and 3.

Weatherford—no arrangements made; will be nights of Nov. 16 and 17.

All trips will be made by college bus.

The Tiger Roster

(NOTE: Jersey numbers will be assigned prior to the first game. They will be available at that time.)

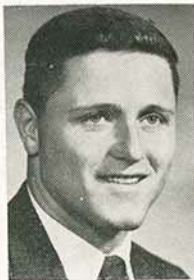
NAME	POS.	HT.	WT.	AGE	CLASS	EXP.	HOMETOWN*
Stan Aldrich	HB	5-8	171	18	Fr.	0	Garfield '62
Bob Anthony	HB	6-0	162	18	Fr.	0	Kensington '62
Larry Bates	QB-HB	5-8	158	20	Jr.	1	Hoisington '60
Grover Bauer	E	6-0	198	19	So.	0	Burdett '61
Jerry Bittner	E	6-1½	198	24	Fr.	0	Glassport, Pa. '55
Gordon Brantley	T	6-0	245	20	Jr.	T	Scott City '60
Bill Brock	T	6-½	219	19	So.	T	Jennings '61
Terry Brown	HB	5-9½	148	18	Fr.	0	Haddam '62
Mickey Bula	QB	5-5	143	22	Sr.	S	Hays (Lyons '58)
A. J. Cochran	FB	5-5½	208	19	Jr.	T	Elwood '60
Joe Cress	HB	6-0	189	19	Fr.	0	Goodland '61
Rodney Damman	FB	6-0	172	18	Fr.	0	Palmer (Clifton '62)
George Daniels	E	5-11	174	20	Jr.	2	Granby, Colo. '60
Tim Daniels	FB	5-10	170	19	So.	1	Granby, Colo. '61
Ross Deewall	HB	5-9	175	20	So.	T	Coldwater '60
Kent DeHaven	HB	5-9	172	20	Jr.	T	Hoisington '60
Larry Dreiling	G	6-2	199	22	Jr.	2	Hays (Hays High '57)
Fred Elevier	HB	5-7	152	18	Fr.	0	Rossville '62
Clark Engle	T	6-0	219	20	So.	1	Abilene '60
Dennis Erkenbrack	QB	5-8½	163	18	Fr.	0	Republic '62
Derryl Franz	FB	5-8	177	22	Sr.	2	Rozel '58
Dudley Fryman	T	6-0	219	18	Fr.	0	Rossville '62
Ron Gardner	T	5-11	244	21	Sr.	3	Abilene '59
Dwight Gillespie	QB	5-9	163	19	So.	S	St. John '61
Wayne Gray	G	5-11	185	18	Fr.	0	McPherson '62
Royce Hamala	HB	6-1½	191	22	Sr.	T	St. Francis '58
Eric Harfmann	G	5-8½	175	19	Fr.	0	Ness City '62
Emery Hart	G	5-8	169	18	Fr.	0	Hoxie '62
Shirley Hartley	QB-HB	6-0	166	18	Fr.	0	Elkhart '62
Jack Hazlett	G	5-9	195	26	Jr.	T	Minneapolis '54
Jim Hill	QB	5-11	163	20	Jr.	T	Lawrence '60
Galen Howell	QB	5-9	150	21	Jr.	2	Larned '59
Jim Howser	C	5-9½	220	18	Fr.	0	Hoisington '62
Bill Hudson	G	5-11	171	17	Fr.	0	Macksville '62
Jim Johnson	E	5-11	163	18	So.	0	Zenith (Stafford '61)
Jesse Kennis	G	5-10	188	18	Fr.	0	Phillipsburg '62
Dave Koelsch	HB	5-8½	194	17	Fr.	0	Ellinwood '62
Larry Korf	G	6-0	195	21	So.	S	Hanston '59
Joe Krasinski	E	6-4	220	19	So.	0	Hamden, Conn. '61

NAME	POS.	HT.	WT.	AGE	CLASS	EXP.	HOMETOWN*
Jim Lee	HB	5-9	180	23	Sr.	3	Cummings '57
Cliff Leiker	C	6-2½	170	23	Jr.	2	Hays (Hays High '57)
Karl Leiker	G	5-8	230	24	Jr.	5	Hays (SJMA '56)
Moe Leiker	T	6-2	246	26	Fr.	0	Hays (Hays High '54)
Vic Lyczak	HB	5-9	160	19	So.	5	Northbrook, Ill. '61
Guy Martin	E	6-0	182	20	Jr.	T	Bowie, Texas (Garden City '60)
Clint Minium	T	6-1	247	18	Fr.	0	Morland '62
Paul Monty	C	6-0	191	18	Fr.	0	Ames (Concordia '62)
Larry Ollek	HB	5-8½	156	18	Fr.	0	Hillsboro '62
Ed Olson	FB	5-8½	185	19	So.	T	Clyde '61
Ken Palmgren	C	5-10	223	21	Jr.	1	Levant (Brewster '59)
Dave Parker	QB-HB	5-7	153	26	Sr.	1	Tonganoxie (Alton, Ill. '54)
Ralph Pearson	C	6-0	190	18	Fr.	0	Clifton (Clyde '62)
Dale Perry	E	5-9	185	20	Jr.	0	Great Bend '60
Glenn Pettengill	E	5-10	174	18	Fr.	0	Lawrence '62
Kirk Pope	G	5-11	211	19	Jr.	2	Selden '60
Ron Reed	T	6-0	240	21	Fr.	0	Monument '58
Jim Sanderson	G	5-9	219	24	Jr.	1	Lacrosse (New Haven, Conn. '56)
Bob Schmidt	E	6-0	150	18	Fr.	0	Ellis '62
Ron Schumacher	T	5-11	229	20	Jr.	2	Hays (Victoria '60)
Jerry Stevenson	HB	6-½	177	18	Fr.	0	Codell '62
Jerry Strecker	C	5-11	201	21	Sr.	3	Russell '59
Ron Sulzman	QB	5-8	145	18	Fr.	0	Selden '62
Dennis Swiantek	HB	5-9	189	21	Jr.	T	Perryopolis, Pa. '59
Max Van Laningham	QB	5-5½	156	18	Fr.	0	Concordia '62
Wally Waldschmidt	QB-HB	5-4½	147	18	Fr.	0	Ellis, '62
Bill Walters	E	6-1	192	19	So.	1	Hays (SJMA '61)
Francis Weers	E	6-2	220	20	Jr.	0	Seward (Radium '60)
Steve Wehmeier	HB	5-11	148	18	Fr.	0	Lawrence (Rossville '62)
Chuck Williams	E	6-1	175	24	Sr.	1	Brewster '55
Clayton Williams	HB	6-½	178	20	Jr.	2	Plainville '60
Steve Worley	FB	6-0	194	19	So.	1	Clay Center '61
Harry Wullschleger	G	5-7½	149	23	Sr.	5	Home (Marysville '57)
Larry Zinn	E	6-0	176	21	Fr.	0	Liberal '59

* High school attended in parentheses

In experience column, number indicates letters earned at FHS; T indicates transfer; S indicates 1961 squadman who did not letter. Hometowns in Kansas unless otherwise indicated.

Sketches---Ends



C. Leiker

G. Daniels

ENDS

Cliff Leiker, 6-2½, 170, 23, Junior, Hays . . . two-time all-CIC end, 1959 and 1960 . . . junior in eligibility after missing last season with knee injury . . . top-notch pass receiver; led league with 29 receptions in 1960 . . . little All-America honorable mention in '60 . . . fast, good hands . . . Army vet . . . sociology major . . . honor roll student . . . hit over .400 in town team baseball last summer.

George Daniels, 5-10½, 174, 20, Junior, Granby, Colo. . . lettered at end in 1960, quarterback in 1961 . . . former all-state back in Colorado . . . will probably remain at end this fall . . . was married during the summer . . . math major . . . older brother of fullback Tim Daniels.

Grover Bauer, 5-11½, 198, 19, Sophomore, Burdett . . . not out for football during freshman year . . . played junior varsity basketball; scored 38 points in one game . . . all-conference in football at Burdett twice . . . undecided major; either psychology or business . . . nickname: Grove.

Jerry Bittner, 6-1½, 198, 24, Freshman, Glassport, Pa. . . enrolled at FHS last winter after stint in Navy . . . lettered twice in football at Glassport, Pa. . . big and rugged . . . majoring in history . . . honor roll student . . . nickname: Nisby.

Jim Johnson, 5-10½, 163, 18, Sophomore, Zenith . . . 1961 Stafford High grad out for first time at FHS . . . earned four grid letters at Stafford . . . majoring in phys ed and history.

Joe Krasinski, 6-4, 220, 19, Sophomore, Hamden, Conn. . . member of track team last spring as a discus thrower . . . first year out for football . . . lettered four years in football at Hamden High School . . . majoring in geology.

Sketches---Ends



Ch. Williams

Walters

Charles Williams, 6-1, 175, 24, Senior, Brewster . . . lettered and started at end last fall . . . previously attended Washburn U. (1955-57) and Kansas U. (1960) . . . good speed . . . Army veteran . . . phys ed major . . . nickname: Chuck or Charlie.

Bill Walters, 6-1, 192, 19, Sophomore, Hays . . . lettered during freshman year . . . earned starting defensive end spot by end of season . . . more than 15 pounds heavier this fall . . . four-year letterman at St. Joseph Military Academy in Hays . . . majoring in business.

Guy Martin, 6-0, 182, 20, Junior, Bowie, Texas . . . transfer from Garden City Junior College . . . captain of Garden City team in '61 . . . 1960 Garden City High graduate; attended Denton (Texas) High two years . . . plans business administration major.

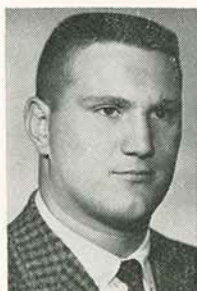
Dale Perry, 5-9, 185, 20, Junior, Great Bend . . . played spring ball in 1960 but ineligible last fall . . . considered a possible "sleeper" among end prospects . . . all-conference center at Great Bend High in 1959 season . . . undecided on major.

Glenn Pettengill, 5-10, 174, 18, Freshman, Lawrence . . . product of top-flight high school grid system at Lawrence High . . . all-area selection and all-state honorable mention last fall . . . one of the fastest ends on the roster . . . among top frosh prospects.

Bob Schmidt, 6-0, 150, 18, Freshman, Ellis . . . the state's top high jumper last spring with leap of 6-6 1/8 . . . lettered in football three times, track four times and basketball twice at Ellis High . . . one of the lightest players on the team, but lanky and has adequate speed.

Larry Zinn, 6-0, 176, 21, Freshman, Liberal . . . 1959 Liberal High graduate enrolling in college for first time . . . all-state and all-area end in high school; named to an All-America high school squad . . . plans to major in education.

Sketches---Tackles



Gardner
Schumacher

TACKLES

Ron Gardner, 5-11, 244, 21, Senior, Abilene . . . three-year letterman; starter since middle of freshman season . . . all-CIC honorable mention last fall . . . his experience, size, intelligence and leadership ability a big boost in the line . . . married . . . carries double major, phys ed and industrial arts . . . honor roll student.

Ron Schumacher, 5-11, 229, 20, Junior, Hays . . . strong candidate for starting berth . . . two-year letterman saw lots of defensive time last year . . . 1960 grad of Victoria High School . . . majoring in physical education.

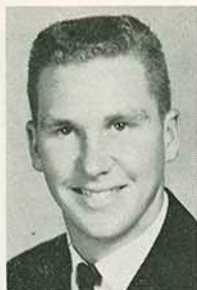
Gordon Brantley, 6-0, 245, 20, Junior, Scott City . . . transfer from Hutchinson JC where he was a grid letterman . . . was all-area tackle at Scott City High in 1959 . . . heaviest tackle unless Moe Leiker plays at that spot . . . biological science major.

Bill Brock, 6-1/2, 219, 19, Sophomore, Jennings . . . lettered at Hutchinson JC last year . . . 1961 Jennings High grad . . . four grid letters at Jennings, where he was student council president and all-area in basketball twice . . . aims for business administration major.

Dudley Fryman, 6-0, 219, 18, Freshman, Rossville . . . earned 12 sports letters at Rossville Rural High, including four in football . . . was team captain, all-conference three years and all-area . . . class salutatorian . . . hopes for major in history.

Maurice Leiker, 6-2, 246, 26, Freshman, Hays . . . older brother of Cliff Leiker . . . in college for first time . . . did not play high school football but saw lots of grid action during Army service . . . may play tackle but will get trial as defensive end . . . solid, good speed . . . 1954 Hays High grad . . . undecided on field of study . . . nickname: Moe.

Sketches---Tackles, Guards



Engle
Dreiling

Clark Engle, 6-0, 219, 20, Sophomore, Abilene
... lettered in 1960 and did not attend school last year ... saw lots of action at close of '60 season ... well-schooled in fundamentals ... track letterman as discus ace ... married ... physical education major.

Clint Minium, 6-1, 247, 18, Freshman, Morland
... center on undefeated Morland High team last fall ... lettered four years in football ... heaviest player in pre-season weigh-in ... plans agriculture major.

GUARDS

Larry Dreiling, 6-2, 199, 22, Junior, Hays ... two-year letterman will be a top contender for starting position ... started last fall ... all-conference honorable mention last year ... Hays High grad ... married ... Navy veteran ... industrial arts major.

Jack Hazlett, 5-9, 195, 26, Junior, Minneapolis ... all-state at Minneapolis nine years ago ... attended K-State in 1956-57 and 1959-60 ... earned freshman letter at K-State ... tough and experienced lineman ... Air Force veteran ... majoring in phys ed.

Jesse Kennis, 5-10, 188, 18, Freshman, Phillipsburg ... good frosh prospect ... was a halfback in high school but asked for a chance to try out at guard for Tigers ... fastest guard on the squad ... good linebacker ... plans teaching course.

Sketches---Guards



Pope
Sanderson

GUARDS

Kirk Pope, 5-11, 211, 19, Junior, Selden . . . two-year letterman was all-CIC honorable mention a year ago . . . one of the team's top linemen by end of '61 season . . . lettered at end as freshman . . . earned 12 letters at Selden High . . . physical education major.

Jim Sanderson, 5-9, 219, 24, Junior, LaCrosse . . . lettered in '61 after transferring from K-State . . . all-CIC honorable mention . . . was all-state in Connecticut playing for Hillhouse High, New Haven, in 1955 . . . earned freshman letter at K-State . . . married . . . phys ed major.

Eric Harfmann, 5-8½, 175, 19, Freshman, Ness City . . . 1962 Ness City High graduate . . . three-year letterman at Ness, where he was an all-conference choice . . . lists interior decorating as his major.

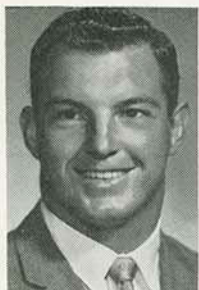
Emery Hart, 5-8, 169, 18, Freshman, Hoxie . . . three-year grid letterman at Hoxie High School . . . also lettered in track and wrestling . . . plans phys ed major.

Bill Hudson, 5-10½, 171, 17, Freshman, Macks-ville . . . four grid letters at Macksville, where he was a member of undefeated squad last fall . . . also basketball and track letterman . . . hopes for major in phys ed.

Karl Leiker, 5-8, 230, 24, Junior, Hays . . . third year on the Tiger squad; has yet to letter . . . 1956 graduate of St. Joseph Military Academy . . . Air Force veteran . . . math and physics major . . . nickname: Herk.

Harry Wullschleger, 5-7½, 149, 23, Senior, Home . . . member of junior varsity last fall after transferring from Kansas State . . . tiny guard loves the game . . . 1957 Marysville High grad . . . majoring in agriculture.

Sketches---Centers



Strecker

Palmgren

CENTERS

Jerry Strecker, 5-10½, 201, 21, Senior, Russell . . . back for third year as starting offensive center . . . started as linebacker midway through freshman season in 1959 . . . all-conference honorable mention last fall . . . consistently dependable . . . completing majors in business and economics as well as phys ed.

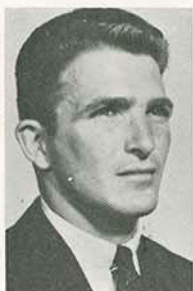
Ken Palmgren, 5-10, 223, 21, Junior, Levant . . . lettered at tackle in 1960 and saw some defensive starting action then . . . should handle bulk of center chores with Strecker . . . could be moved back to tackle if necessary . . . all-state at Brewster High in 1958 . . . attended Kansas U. one semester . . . married . . . phys ed major.

Jim Howser, 5-9½, 220, 18, Freshman, Hoisington . . . all-area at Hoisington High last fall . . . was co-captain and defensive captain . . . lettered four years in football . . . tentative plans for major in phys ed.

Paul Monty, 5-11½, 191, 18, Freshman, Ames . . . named senior lineman of the year at Concordia High School last fall . . . lettered three years on good Concordia teams . . . exceptional student, plans major in mathematics.

Ralph Pearson, 6-0, 190, 18, Freshman, Clifton . . . 1962 Clyde High School graduate . . . lettered three years and was all-conference in football . . . plans to major in business.

Sketches---Quarterbacks



Parker

Howell

QUARTERBACKS

Dave Parker, 5-7, 153, 26, Senior, Tonganoxie . . . "Mr. Offense" for the Tigers last fall . . . led the league in rushing . . . led the Tigers in total offense, rushing, passing, punt and kickoff returns and scoring . . . outstanding speed and deception and a squad leader . . . all-CIC in Topeka Daily Capital last fall; second team in official all-CIC squad . . . president of the Junior Interfraternity Council on campus . . . married . . . former paratrooper . . . phys ed major.

Galen Howell, 5-9, 150, 21, Junior, Larned . . . lettered as reserve quarterback in 1959 and 1960; did not play last year . . . passed for 119 yards and two TDs in 1960 . . . familiar with Tiger grid system . . . married . . . majoring in business.

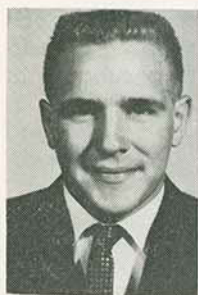
Mickey Buia, 5-5, 143, 22, Senior, Hays . . . played jayvee ball last fall after transferring from Kansas U. . . tough little competitor . . . 1958 grad of Lyons High . . . attended Hutchinson JC before going to KU . . . phys ed major.

Dennis Erkenbrack, 5-8½, 163, 18, Freshman, Republic . . . lettered four years in football, basketball and track at Republic High School . . . was clever six-man quarterback . . . high school coach was Whitey Alpers, now FHS graduate assistant . . . plans to pursue major in phys ed.

Dwight Gillespie, 5-9, 163, 19, Sophomore, St. John . . . squadman last year but did not play enough to letter . . . passed for one extra point last fall . . . track letterman last spring . . . earned 10 letters at St. John High . . . undecided on major field.

Max Van Laningham, 5-5½, 156, 18, Freshman, Concordia . . . small but spirited . . . fundamentally sound . . . quarterbacked good Concordia team last fall . . . was all-area second team . . . good speed . . . planning phys ed major.

Sketches---QB's, HB's



Bates

Lee

Larry Bates, 5-8, 158, 20, Junior, Hoisington . . . lettered as halfback last year but filled in at quarterback when Dave Parker was injured . . . strong defensive halfback . . . was all-area, all-state at Hoisington in 1959 . . . attended Kansas U. one semester . . . married . . . phys ed major.

Shirley Hartley, 6-0, 166, 18, Freshman, Elkhart . . . listed at both quarterback and halfback on pre-season chart . . . named outstanding athlete at Elkhart High School last year . . . earned 10 sports letters . . . good student and student council president at Elkhart.

Jim Hill, 5-10½, 163, 20, Junior, Lawrence . . . was starting quarterback at Lawrence High in 1959 during extensive winning streak . . . played past two seasons at Independence JC . . . all-conference and all-area at Lawrence . . . good quarterback prospect . . . married . . . business major.

Ron Sulzman, 5-8, 145, 18, Freshman, Selden . . . earned total of 14 athletic letters at Selden, including four in football . . . was salutatorian of graduating class last spring . . . hopes for major in business.

HALFBACKS

Jim Lee, 5-9, 180, 23, Senior, Cummings . . . three-year letterman returns to give FHS the best linebacker in the CIC . . . also started at offensive halfback last fall . . . rugged and dependable . . . 1957 graduate of Atchison County High at Effingham . . . serves in National Guard . . . majoring in mathematics.

Joe Cress, 5-11½, 189, 19, Freshman, Goodland . . . a standout athlete at Goodland High School . . . all-area, all-state and high school All-America honorable mention in 1961 . . . did not go to college last year . . . could be a top punter, kicks left-footed . . . undecided on field of study.

Sketches---Halfbacks

Royce Hamala, 6-1½, 191, 22, Senior, St. Francis . . . could be used at either quarterback or halfback . . . junior college All-America fullback at McCook (Neb.) JC in 1959 . . . quarterback in high school at St. Francis in 1957 . . . attended Colorado State U. in 1958-59 and Nebraska U. one semester before coming to FHS last year . . . one of the top prospects on the Tiger roster . . . married . . . majoring in biological science.

Ross Deewall, 5-9, 175, 20, Sophomore, Coldwater . . . transfer from K-State, where he earned freshman awards in football and track . . . 1960 grad of Coldwater High . . . among the speediest halfbacks on the roster . . . pursuing agriculture major.

Kent DeHaven, 5-9, 172, 20, Junior, Hoisington . . . transferred from Pittsburg State to enroll at FHS last fall . . . played junior varsity ball last season . . . earned 11 letters in sports at Hoisington High . . . good speed and deception . . . double major in phys ed and elementary education.

Vic Lyczak, 5-9, 160, 19, Sophomore, Northbrook, Ill. . . . squadman last fall but did not letter . . . 1961 grad of Glenbrook (Ill.) High . . . lettered in wrestling last winter at FHS . . . was top-notch prep wrestler in Illinois . . . majoring in phys ed.

Larry Ollek, 5-8½, 156, 18, Freshman, Hillsboro . . . third team all-state selection last fall . . . played for Arlo Buller, now head coach at Hays High School . . . fast offensive halfback; scored 21 touchdowns in '61 . . . lettered three times each in football, basketball and track . . . plans to major in business.

Stan Aldrich, 5-8, 171, 18, Freshman, Garfield . . . 10-letter man at Garfield High School, including four in football . . . plans to major in agriculture.

Bob Anthony, 6-0, 162, 18, Freshman, Kensington . . . moved to halfback after coming to camp as an end . . . good speed . . . all-conference in football at Kensington High, where he earned 11 letters . . . plans to major in phys ed.

Terry Brown, 5-9½, 148, 18, Freshman, Haddam . . . one-man gang at Haddam High School last fall . . . captain of his six-man team there . . . lettered all four years in football, basketball and track . . . eyes major in phys ed.

Sketches---HBs, FBs



Cl. Williams

Worley

Clayton Williams, 6-½, 178, 20, Junior, Plainville . . . has lettered two years while shuttling between halfback and end spots . . . should be ready for a good year in the backfield . . . earned 13 letters at Plainville High School . . . married . . . phys ed major.

Jerry Stevenson, 6-½, 177, 18, Freshman, Codell . . . earned 16 letters at Codell High, four each in football, basketball, track and baseball . . . was salutatorian . . . hopes to major in pharmacy.

Dennis Swiantek, 5-9, 189, 21, Junior, Perryopolis, Pa. . . . transferred last year from Pratt JC . . . lettered twice in football and once in basketball at Pratt . . . all-county halfback as prep gridder in Pennsylvania . . . phys ed major.

Richard Waldschmidt, 5-4½, 147, 18, Freshman, Ellis . . . played prep football at Ellis High as quarterback and halfback . . . plans to earn phys ed major . . . nickname: Wally.

Steve Wehmeier, 5-10½, 148, 18, Freshman Lawrence . . . all-conference and co-captain at Ross-ville High School last fall . . . lettered three years in football . . . hopes for major in accounting.

Dave Koelsch, 5-8½, 194, 17, Freshman, Ellinwood . . . lettered four times in football and twice in track at Ellinwood . . . plans major in phys ed.

FULLBACKS

Steve Worley, 5-11½, 194, 19, Sophomore, Clay Center . . . the Tigers' third leading rusher as a freshman last season . . . all-CIC honorable mention . . . strong, determined runner . . . should be a Bengal standout this fall . . . married late this summer . . . industrial arts major.

Sketches---Fullbacks



Franz

T. Daniels

Derryl Franz, 5-8, 177, 22, Senior, Rozel . . . two-year letterman as reserve fullback . . . attended Ottawa U. his freshman year . . . grad of six-man ball at Rozel . . . fine deception for a fullback . . . married . . . phys ed major.

Tim Daniels, 5-10, 170, 19, Sophomore, Granby, Colo. . . . lettered as a reserve halfback last year . . . fastest of the fullback candidates . . . earned 11 sports letters in high school . . . was all-state in both football and basketball in Colorado . . . phys ed major.

A. J. Cochran, 5-5½, 208, 19, Junior, Elwood . . . transfer from Highland JC where he was an all-conference fullback . . . was most valuable back at Highland . . . voted "most likely to succeed" in high school at Elwood . . . plans business administration major.

Ed Olson, 5-8½, 185, 19, Sophomore, Clyde . . . transfer from Kansas State . . . lettered four years in football, three in basketball and three in track at Clyde High School . . . pursuing business administration major.

Rodney Damman, 6-0, 172, 18, Freshman, Palmer . . . 1962 Clifton High graduate . . . co-captain of Clifton football squad . . . hopes to earn mathematics major.

Birthdays in Season

The following members of the pre-season Tiger roster will have birthdays during the 1962 season:

Oct.	6	Jim Johnson	19th
Oct.	8	Charlie Williams	25th
Oct.	12	Karl Leiker	25th
Oct.	16	Dave Koelsch	18th
Oct.	19	Eric Harfmann	20th
Oct.	21	Emery Hart	19th
Nov.	4	Larry Dreiling	23rd
Nov.	8	Bill Hudson	18th
Nov.	14	A. J. Cochran	20th
Nov.	15	Kirk Pope	20th

A Look at Each Game

NORTHWEST MISSOURI STATE

First Game—At Hays, Saturday, Sept. 22, 7:30 p.m.

SCHOOL: Missouri state-supported teacher education

LOCATION: Maryville, Missouri

HEAD COACH: Earl Baker (Mo. Valley, 1950); 3rd year

ASSISTANTS: Robert Gregory (NW Missouri, 1941); 7th year

Burton Richey (NW Missouri, 1951); 2nd year

Marion Moss (Oklahoma State, 1955); 2nd year

ATHLETIC DIRECTOR: Ryland Milner (NW Missouri, 1933); 26th year

SPORTS INFORMATION DIRECTOR: Everett W. Brown
(JU 2-2361)

NICKNAME: Bearcats

COLORS: Green and White (Green at home; White on the road)

ENROLLMENT: 2,600

OFFENSIVE SYSTEM: Single wing

MEMBER OF: Missouri Intercollegiate Athletic Assn., NCAA

1961 Results

(NW Missouri score first)

Northern Illinois	0-49	Northeast Missouri	7-36
Fort Hays State	17-16	Southeast Missouri	0-28
William Jewell	13-9	Southwest Missouri	7-34
Pittsburg State	0-35	Central Missouri	13-44
Missouri Mines	13-20	Record:	2-7-0

1962 Schedule

Sept. 15 at Peru (Neb.) State	Oct. 20 Central Missouri
Sept. 22 at Fort Hays State	(Homecoming)
Sept. 29 William Jewell	Oct. 27 at Missouri Mines
Oct. 6 Nebraska Wesleyan	Nov. 3 Northeast Missouri
Oct. 13 at SW Missouri	Nov. 10 Southeast Missouri

Bearcat Outlook

An experienced nucleus of 20 lettermen boosts the Maryville hopes this fall, as Coach Earl Baker begins his third season. Among the returnees are end Ed Whitaker, tackle Larry Holland, guard Larry Timmerman, quarterback Tom Walton and halfback Don Daniels, all starters against FHS last year.

Also in the fold are three-year lettermen Duane Abbott, center, and Joe Bell, halfback. Abbott and Whitaker serve as co-captains.

The 1961 Game

Fort Hays State	3	7	6	0	—	16
Northwest Missouri	0	17	0	0	—	17

FHS: TDs, Jerry Brown (1, plunge); Dave Parker (22, run). EP, Don Schrock. FG, Don Schrock (39 yards).

NW Mo.: TDs, Jack Boyd (2, plunge); Stew Cline (27, run). EPs, Charles Butler (kick); Prime Williams (run). Safety, Parker tackled in end zone.

Series Record

(FHS score first)

1950	21-14	1954	20-7	1958	13-0
1951	20-7	1955	27-13	1959	8-13
1952	6-7	1956	19-13	1960	9-14
1953	7-21	1957	40-27	1961	16-17

Total games: 12

FHS won 7; NW Missouri won 5; no ties

A Look at Each Game

THE COLORADO COLLEGE

Second Game—At Hays, Saturday, Sept. 29, 7:30 p.m.
Band and Parents Night

SCHOOL: Private college

LOCATION: Colorado Springs, Colorado

HEAD COACH: Jerry Carle (Northwestern, 1948); 6th year

ASSISTANTS: Frank Flood (Manhattan); 3rd year
Leon "Red" Eastlack (Colorado State U., 1942); 11th year
Anthony Frasca (Colorado College); 4th year

ATHLETIC DIRECTOR: Jerry Carle (above)

SPORTS INFORMATION DIRECTOR: Ted Wilcox
(ME 4-7744 Ext. 315)

NICKNAME: Tigers

COLORS: Black and Gold

ENROLLMENT: 1,200

OFFENSIVE SYSTEM: Pro-style, slotback, split ends with flanker

MEMBER OF: Rocky Mountain Faculty Athletic Conference;
NCAA

1961 Results

(CC score first)

Washburn	14-18	Western State	34-7
St. Mary's	9-6	Adams State	8-25
Fort Hays State	14-6	Colorado Mines	7-10
Westminster	6-6	Nebraska Wesleyan ..	34-14
Colorado State Coll. ..	24-13	Record:	5-3-1

1962 Schedule

Sept. 8 St. Mary's	Oct. 27 Western State
Sept. 15 at Washburn	Nov. 3 at Adams State
Sept. 29 at Fort Hays State	Nov. 10 at Neb. Wesleyan
Oct. 13 Colorado State Coll.	Nov. 17 at Colorado Mines
Oct. 20 Concordia (Neb.)	

Tiger Outlook

This is a rebuilding year for Colorado College, as 25 seniors were graduated from last year's team, leaving only eight returning lettermen. Coach Jerry Carle plans to fill at least 22 varsity positions with new players.

Only two of the eight returnees started against FHS last year—end Mike Minelli and guard Al Loosli. Loosli intercepted two Tiger passes. Another returnee, halfback Vince Greco, was one of the top gainers against FHS with 43 yards in five carries.

The 1961 Game

Fort Hays State	0	0	0	6	—	6
Colorado College	0	14	0	0	—	14

FHS: TD, Steve Worley (4, plunge).

CC: TDs, Dan Wright (5, run); Terry Holleran (1, plunge).

EPs, James Blair, Pete Pleasant (kicks).

Series Record

(FHS score first)

1942	0-13	1950	0-32	1958	13-7
1946	0-15	1951	14-13	1959	0-47
1947	7-19	1952	0-49	1960	19-28
1949	7-19	1957	20-22	1961	6-14

Total games: 12

FHS won two; CC won 10; no ties

A Look at Each Game

KEARNEY (NEB.) STATE

Third Game—At Kearney, Neb., Saturday, Oct. 6, 7:30 p.m.

SCHOOL: Nebraska state-supported teacher education

LOCATION: Kearney, Nebraska

HEAD COACH: Allen H. Zikmund (Nebraska, 1942); 8th year

ASSISTANTS: Bill Giles (Nebraska, 1955); 3rd year

Bob Hauver (Kearney State, 1949); 4th year

Richard O'Neill (Kearney State, 1960); 1st year

ATHLETIC DIRECTOR: Charlie H. Foster (Grand Island College, 1922); 18th year

SPORTS INFORMATION DIRECTOR: Don Briggs
(237-2251 Ext. 268)

NICKNAME: Antelopes

COLORS: Royal Blue and Old Gold (White at home; Blue on road)

STADIUM: Foster Field, seats 4,000

ENROLLMENT: 2,300

OFFENSIVE SYSTEM: T-formation

MEMBER OF: Nebraska College Conference; NAIA

1961 Results

(Kearney score first)

Fort Hays State	0-24*	Chadron (Neb.) State ..	51-0
Peru (Neb.) State	0-7	Nebraska Wesleyan ..	27-0
Eastern Montana	34-6	Wayne (Neb.) State ..	40-0
Hastings (Neb.)	18-7	NE Oklahoma	21-14
Doane (Neb.)	13-14	Record:	7-2-0

* FHS forfeited for using ineligible player

1962 SCHEDULE

Sept. 22 Wayne (Neb.) State	Oct. 20 Doane (Neb.)
Sept. 29 Peru (Neb.) State	(Homecoming)
Oct. 6 Fort Hays State	Oct. 27 at Chadron (Neb.)
Oct. 13 at Hastings (Neb.)	Nov. 3 at Huron (S.D.)
	Nov. 10 Northern (S.D.) State

Antelope Outlook

The outlook is "not too bright," according to Kearney reports, as half of the 1961 lettermen were lost. The center of the line will be drawn mostly from new players. Bright spots are at quarterback, where young Dick Butolph came along strong last season, and end, where at least three top performers return.

But KSTC lettered 45 players a year ago and 21 are returning. The top returnees include Butolph; ends Jim Irwin, Larry McCord and Charles Hircock; linemen Bob Stillmock and Larry Timmermans, and halfback John Curtis.

The 1961 Game

Fort Hays State	0	18	0	6	—	24
Kearney State	0	0	0	0	—	0

FHS: TDs, Jerry Brown (1, plunge); Don Schrock (23, pass from Dave Parker; Wayne Schumacher (10, pass from Parker); Parker (3, plunge).

Series Record

(FHS score first)

1926	52-0	1938	38-6	1958	7-35
1927	25-6	1954	41-14	1959	19-14
1931	0-2	1955	20-12	1960	20-12
1932	18-0	1956	6-18	1961	24-0*
1933	41-0	1957	0-27	* Forfeited	

Total games: 14

FHS won 9; Kearney won 5; no ties

A Look at Each Game

Fourth Game—At Omaha, Neb., Saturday, Oct. 13, 2:00 p.m.
OU Band Day

First conference game for both teams

SCHOOL: Municipal university

LOCATION: Omaha, Nebraska

HEAD COACH: Al Caniglia (Omaha, 1951); 3rd year

ASSISTANTS: Don Watchorn (Midland, 1946); 4th year
 Ken Fischer (Nebraska, 1950); 3rd year

ATHLETIC DIRECTOR: Virg Yelkin (Nebraska, 1936); 17th year

SPORTS INFORMATION DIRECTOR: Norm Taylor
 (553-4700 Ext. 358)

NICKNAME: Indians

COLORS: Red and Black (Red at home; White on road)

STADIUM: University Stadium, seats 5,000

ENROLLMENT: 4,500

OFFENSIVE SYSTEM: Wing-T

MEMBER OF: Central Intercollegiate Conference; NAIA; NCAA

1961 Results

(OU score first)

Morningside (Iowa) ..	32-6	St. Benedict's	33-14
Colorado State Coll. ..	27-6	Washburn	27-10
Colorado Mines	12-13	Pittsburg State	18-34
Fort Hays State	26-0	Drake U.	13-36
Emporia State	27-21	Record:	6-3-0

1962 Schedule

Sept. 15 at Morningside (Ia.)	Oct. 20 Emporia State
Sept. 22 at Colorado State	Oct. 27 at St. Benedict's
Sept. 29 Bradley U.	Nov. 2 at Washburn
Oct. 6 Northern Illinois	Nov. 10 Pittsburg State
Oct. 13 Fort Hays State	

Indian Outlook

"Caniglia to the Camellia" is the cry at Omaha, as prospects are described as "very bright" in the Indian camp. Nearly 30 lettermen return, only one starter was lost and some talented transfers add to the rosy picture. Returning linemen will be two-deep at each position, and the starting backfield returns intact.

Top returnees are speedster Roger Sayers, who averaged nearly 10 yards per carry last year; diminutive halfback Louis Miloni; quarterback Carl Meyers; all-CIC end Paul Blazeovich, the league's top pass receiver in '61; defensive halfback Dean Taylor; and linemen Jack Peterson (270), Ray Rivera (270) and Duane Salak. Blazeovich, Salak, Sayers and Miloni were first-team all-CIC last fall.

The 1961 Game

Fort Hays State	0	0	0	0	—	0
Omaha University	7	6	13	0	—	26

OU: TDs, Roger Sayers 2 (80, run; 2, run); Wayne Backes (7, run); Louis Miloni (5, run). **EPs,** Carl Meyers 2 (kicks).

Series Record

(FHS score first)

1953	12-20	1959	18-6	1961	0-26
1954	19-27	1960	19-18		

Total games: 5

FHS won 2; OU won 3; no ties

PITTSBURG STATE

Fifth Game—At Hays, Saturday, Oct. 20, 2 p.m.

Fort Hays State Homecoming

SCHOOL: Kansas state-supported liberal and applied arts

LOCATION: Pittsburg, Kansas

HEAD COACH: Carnie Smith (Kansas, 1933); 14th year

ASSISTANTS: Joe Murphy (Pittsburg, 1934); 14th year

Tom Lester (Pittsburg, 1952); 2nd year

ATHLETIC DIRECTOR: Prentice Gudgen (Pittsburg, 1928); 17th year

SPORTS INFORMATION DIRECTOR: Dale Cunningham (AD 1-7000, Ext. 292)

NICKNAME: Gorillas

COLORS: Crimson and Gold (Crimson at home; White on road)

ENROLLMENT: 4,000

OFFENSIVE SYSTEM: Bears' T

MEMBER OF: Central Intercollegiate Conference; NAIA

1961 Results

(Pitt score first)

Southwest Missouri ..	20-0	Omaha U.	34-18
Central Missouri	47-0	Northern (S. D.)	28-14
Missouri Mines	20-0	Linfield (Ore.)	12-7
Northwest Missouri ..	35-0	(Camellia Bowl)	
St. Benedict's	26-0	Record: 11-0-0	
Fort Hays State	41-7	CIC Champions	
Washburn	40-0	NAIA Champions	
Emporia State	35-0		

1962 Schedule

Sept. 15 Southwest Missouri	Oct. 20 at Fort Hays State
Sept. 22 at Central Missouri	Oct. 27 Washburn U.
Sept. 29 Missouri Mines	(Homecoming)
Oct. 6 at Northeast Missouri	Nov. 3 Emporia State
Oct. 13 at St. Benedict's	Nov. 10 at Omaha U.

Gorilla Outlook

Though most of the CIC observers pick Pitt to repeat as champion, the Gorillas see some weaknesses. Pitt publicity reports point to lack of experience and depth, despite 22 returning lettermen. The line will reportedly be weaker and passing will be less effective due to the loss of both starting ends. Running will be about as strong.

Top returnees: Harlan Hess, NAIA All-American tackle; Jerry Archer, NAIA All-American linebacker; Phil Vogrin at quarterback; Eddie Carter at guard; Charles Sturdevant, strong defensive back; Tom Spiewak, guard; Bob Fulton, halfback. Hess, Carter, Archer and Vogrin were first team all-conference last fall.

The 1961 Game

Fort Hays State	7	0	0	0	—	7
Pittsburg State	0	21	7	13	—	41

FHS: TD, Wayne Schumacher (8, run). EP, Jim Baird (kick).

Pitt: TDs, Gary Snadon (2, plunge); Bill Presson 2 (1, plunge; 44, pass from Phil Vogrin); Dick Colliver (2, plunge); Vogrin (1, plunge); Gene John (1, plunge). EPs, Vogrin 5 (kicks).

Series Record

(FHS score first)

1925	0-6	1937	13-6	1952	7-7
1926	0-7	1938	19-6	1953	12-12
1927	7-13	1939	7-7	1954	22-7
1928	6-0	1940	6-0	1955	7-13
1929	0-13	1941	0-26	1956	6-27
1930	0-14	1942	7-13	1957	0-54
1931	6-13	1946	0-0	1958	16-7
1932	0-13	1947	0-0	1959	12-14
1933	0-0	1948	27-7	1960	7-44
1934	0-19	1949	7-26	1961	7-41
1935	0-21	1950	0-6		
1936	23-0	1951	0-3		

Total games: 34

FHS won 8; Pitt won 20; 6 ties

EMPORIA STATE

Sixth Game—At Emporia, Saturday, Oct. 27, 2 p.m.

Emporia State Band Day

SCHOOL: Kansas state-supported teacher education

LOCATION: Emporia, Kansas

HEAD COACH: Keith Caywood (E-State, 1942); 8th year

ASSISTANTS: Melvin "Shorty" Long (E-State, 1941); 7th year
Ron Blaylock (E-State, 1961); 2nd year

Jim Brown; 1st year

Richard Nickali; 1st year

ATHLETIC DIRECTOR: Dr. Joseph M. Pease; 1st year

SPORTS INFORMATION DIRECTOR: Larry Ensminger

(DI 2-5000 Ext. 206 or 282)

NICKNAME: Hornets

COLORS: Black and Gold (Black at home; White on road)

STADIUM: Welch Stadium, seats 7,000

ENROLLMENT: 5,000

OFFENSIVE SYSTEM: Wing-T

MEMBER OF: Central Intercollegiate Conference; NAIA; NCAA

1961 Results

(E-State score first)

Lincoln U.	6-22	Omaha U.	21-27
Southwest Missouri ...	12-19	Fort Hays State	7-12*
Central Oklahoma	7-27	Pittsburg State	0-35
Central Missouri	7-12	St. Benedict's	0-19
Washburn	26-10	Record: 2-7-0	

*FHS forfeited for using ineligible player

1962 Schedule

Sept. 15 Lincoln U. (Mo.)	Oct. 20 at Omaha U.
Sept. 22 Southwest Missouri	Oct. 27 Fort Hays State
Sept. 29 at Central Okla.	Nov. 3 at Pittsburg State
Oct. 6 Central Missouri	Nov. 10 St. Benedict's
Oct. 13 at Washburn U.	(Homecoming)

Hornet Outlook

Coach Keith Caywood looks for an improved squad as the E-State outlook is more promising than in recent seasons. The 16 returning lettermen provide more depth than in past years, and they will be supplemented by some 35 high school prospects. Caywood expects more reserve strength and more overall speed than his '61 team had, but says the Hornets will be young and small.

The top returnees among the 16 are co-captains Jim Meyer, an end, and Dale Greiner, a halfback; fullback Jim Anderson, and Reuben Early, strong running halfback. Greiner was the league's leading punter last year. Anderson and Early gained a total of 111 yards against FHS last fall.

The 1961 Game

Fort Hays State	0	6	0	6	—	12
Emporia State	0	0	0	7	—	7

FHS: TDs, Dave Parker 2 (9, run; 17, run).

E-State: TD, Jim Meyer (10, pass from Harold Blowey).
EP, Marcus Goodrich (kick).

Series Record

(FHS score first)

1923	3-26	1936	15-7	1952	6-28
1924	2-19	1937	6-14	1953	7-20
1925	3-13	1938	14-0	1954	20-6
1926	0-14	1939	0-27	1955	32-20
1927	0-26	1940	0-6	1956	13-14
1928	0-34	1941	19-22	1958	7-7
1929	0-6	1942	0-40	1959	0-26
1930	0-0	1946	25-6	1960	14-27
1931	0-26	1947	7-39	1961	12-7**
1932	13-0	1948	0-25	*E-State forfeited	
1933	15-6	1949	9-0	**FHS forfeited	
1934	15-0	1950	0-27		
1935	1-0*	1951	7-14		

Total games: 35

FHS won 10; E-State won 23; two ties

A Look at Each Game

ST. BENEDICT'S

Seventh Game—At Atchison, Saturday, Nov. 3, 8 p.m.

SCHOOL: Catholic, all-male

LOCATION: Atchison, Kansas

HEAD COACH: Ivan Schottel (NW Missouri, 1941); 9th year

ASSISTANT: Ralph Nolan (St. Benedict's, 1939); 13th year

ATHLETIC DIRECTOR: Ralph Nolan (above)

SPORTS INFORMATION DIRECTOR: Bill Wittman

(EM 7-5340 Ext. 35)

NICKNAME: Ravens

COLORS: Black and White (Black at home; White on road)

STADIUM: Amelia Earhart Stadium, seats 3,000

ENROLLMENT: 775 (all men)

OFFENSIVE SYSTEM: T-formation

MEMBER OF: Central Intercollegiate Conference; NAIA

1961 Results

(St. Benedict's score first)

Hillsdale College	0-20	Omaha U.	14-33
Southeast Missouri	0-14	Fort Hays State	14-21*
Southwest Missouri	0-7	Emporia State	19-0
Pittsburg State	0-26	William Jewell	14-34
Washburn	25-14	Record:	3-6-0

*FHS forfeited for using ineligible player

1962 Schedule

Sept. 29 at SE Missouri	Oct. 27 Omaha U.
Oct. 6 at SW Missouri	Nov. 3 Fort Hays State
Oct. 13 Pittsburg State	Nov. 10 at Emporia State
(Homecoming)	Nov. 17 at William Jewell
Oct. 19 at Washburn	

Raven Outlook

Coach Ivan Schottel lost 35 members of his 1961 squad, which experienced an infrequent losing season, and does not feel his 1962 squad will be a championship contender. He does expect the nucleus of an improved squad, with more speed in the backfield. End may be a weaker area, as five varsity ends were lost.

The top returnees among 13 lettermen back should be center Bill Maus, an all-CIC choice in 1960; guard Larry Kaminsky; halfback Corky Jacobs, who was the Raven leader last year, and fullback Mike Harris, the top ground-gainer against FHS last fall. Kaminsky and Maus will be co-captains.

The 1961 Game

Fort Hays State	0	0	14	7	—	21
St. Benedict's	0	7	7	0	—	14

FHS: TDs, Jim Lee (55, fumble return); Steve Worley (1, plunge); Wayne Schumacher (1, plunge). EPs, Jim Baird 2 (kicks); Don Schrock (pass from Dwight Gillespie).

St. B: TDs, Don Kassing (1, plunge); Mike Harris (6, plunge). EPs, Gerald Wichman 2 (kicks).

Series Record

(FHS score first)

1934	6-6	1946	7-14	1955	27-7
1935	0-18	1947	27-7	1956	0-46
1936	12-27	1948	40-0	1957	24-38
1937	7-7	1949	33-20	1958	0-41
1938	14-19	1950	7-7	1959	27-45
1939	7-13	1951	20-19	1960	21-26
1940	0-6	1952	2-14	1961	21-14*
1941	7-26	1953	8-20	*FHS forfeited	
1942	0-33	1954	12-13		

Total games: 25

FHS won 5; St. Benedict's won 17; 3 ties

A Look at Each Game

WASHBURN UNIVERSITY

**Eighth Game—At Hays, Saturday, Nov. 10, 7:30 p.m.
Fort Hays State Guest Night**

SCHOOL: Municipal university

LOCATION: Topeka, Kansas

HEAD COACH: Ellis D. Rainsberger (Kansas State, 1958);
1st year

ASSISTANTS: Norman Short (William Jewell, 1949); 3rd year

Marion McDonald (Fort Hays State, 1937); 11th year

Ray Glaze (Kansas State, 1958); 1st year

Jack Keelan (Kansas State, 1958); 1st year

ATHLETIC DIRECTOR: Dick Godlove (Iowa, 1927); 17th year

SPORTS INFORMATION DIRECTOR: Dick Rosetta

(CE 5-5341 Ext. 27)

NICKNAME: Ichabods

COLORS: Yale Blue and White (Blue at home; White on road)

ENROLLMENT: 3,600 (2,400 day, 1,200 evening)

OFFENSIVE SYSTEM: Multiple-T

MEMBER OF: Central Intercollegiate Conference, NAIA

1961 Results

(WU score first)

Colorado College	18-14	St. Benedict's	14-25
Northeast Missouri	9-27	Pittsburg State	0-40
Central Missouri	27-15	Omaha U.	10-27
Colorado Mines	20-6	Fort Hays State	7-14*
Emporia State	6-20	Record:	4-5-0

*FHS forfeited for using ineligible player

1962 Schedule

Sept. 15 Colorado College	Oct. 19 St. Benedict's
Sept. 22 at NE Missouri	Oct. 27 at Pittsburg State
Sept. 29 at Central Missouri	Nov. 2 Omaha U.
Oct. 6 at Colorado Mines	Nov. 10 at Fort Hays State
Oct. 13 Emporia State	

(Homecoming)

Ichabod Outlook

Nine returning lettermen expected from a total of 23 lettermen last season gives new coach Ellis Rainsberger, former Drake assistant, slim prospects for his inaugural season. Line prospects are listed as fair, with backfield prospects very slim. Underclassmen and possible transfers will have to fill in at many spots.

The top returnees are quarterback Curt Miller; big tackle Warren Dobry, and pass-catching end Ralph Smith. Smith grabbed three passes against FHS last fall, and Miller passed for the Ichabods' lone TD.

The 1961 Game

Fort Hays State	7	0	0	7	--	1-4
Washburn U.	0	7	0	0	—	7

FHS: TDs, Dave Parker 2 (3, run; 35, run). EPs, Jim Baird, Don Schrock (kicks).

WU: TD, John Pusateri (10, pass from Curt Miller). EP, Jack Clanton (kick).

Series Record

(FHS score first)

1919	6-7	1942	13-20	1955	7-27
1928	6-2	1946	20-20	1956	19-32
1929	0-26	1947	14-27	1957	19-16
1930	7-33	1948	6-6	1958	6-19
1931	6-27	1949	13-34	1959	12-19
1932	0-13	1950	0-7	1960	7-33
1933	0-0	1951	6-34	1961	14-7*
1934	23-12	1952	14-20	* FHS forfeited	
1935	12-6	1953	7-6		
1941	0-21	1954	26-6		

Total games: 27

FHS won 6; WU won 18; 3 ties

A Look at Each Game

SOUTHWESTERN OKLAHOMA

Ninth Game—At Weatherford, Okla., Saturday, Nov. 17, 8 p.m.

SCHOOL: Oklahoma state-supported teacher education, liberal arts, pharmacy

LOCATION: Weatherford, Oklahoma

HEAD COACH: J. W. Cole (Oklahoma, 1951); 5th year

ASSISTANTS: Leo Canaday (SW Oklahoma, 1956); 5th year
Alex Glass (SW Oklahoma, 1956); 1st year

ATHLETIC DIRECTOR: Rankin Williams (SW Oklahoma, 1922); 41st year

SPORTS INFORMATION DIRECTOR: Walter Crouch
(GE 2-3311 Ext. 23)

NICKNAME: Bulldogs

COLORS: Blue and White (White at home; Blue on road)

STADIUM: Milam Stadium, seats 5,000

ENROLLMENT: 3,000

OFFENSIVE SYSTEM: Wing-T

MEMBER OF: NAIA

1961 Results

(SW Oklahoma score first)

Tarleton (Texas)	14-20	Panhandle A & M	0-40
E. Central Oklahoma ..	12-26	E. New Mexico	0-14
NW Oklahoma	21-0	Langston U.	20-26
Central Oklahoma	0-20	Arlington (Texas)	0-28
NE Oklahoma	13-7	Record: 2-8-0	
SE Oklahoma	0-20		

1962 Schedule

Sept. 15 at Tarleton (Texas)	Oct. 20 SE Oklahoma
Sept. 22 E. Central Okla.	Oct. 27 Panhandle A & M
Sept. 29 at NW Oklahoma	Nov. 3 at E. New Mexico
Oct. 6 Central Oklahoma	Nov. 10 at Langston U.
Oct. 13 at NE Oklahoma	Nov. 17 Fort Hays State

Bulldog Outlook

Seventeen lettermen return to Coach J. W. Cole, whose 1961 team won two and lost eight. Prospects are listed as "not too good" in the Bulldog camp, although they could be toughened by the end of a 10-game schedule. A lack of experienced ends is the weak point; the return of the starting backfield is the strong point.

The top performers among the returning lettermen include Gary Abercrombie, quarterback; Pat Griffin, halfback; Alford Mitchell, fullback; Jack Smalley, center, and Kenneth Anderson, tackle. This will be the first game between the two schools in 21 years.

The 1961 Game

Did not meet.

Series Record

(FHS score first)

1937	12-7
1941	0-19

Total games: 2

FHS won 1; SW Oklahoma won 1; no ties

Recent Tiger Leaders

TOTAL OFFENSE	Plays	Rushing	Passing	Net Gain
1957 Chuck Vernon, FB	108	589	0	589
1958 Lynn Elliott, QB	152	41	604	645
1959 Darrel Hildebrand, HB	106	590	0	590
1960 Wayne Schumacher, HB	121	414	127	541
1961 Dave Parker, QB-HB	177	759	169	928

RUSHING	TC	Net Gain	Avg.
1957 Chuck Vernon, FB	107	589	5.5
1958 Chuck Vernon, FB	117	470	4.0
1959 Darrel Hildebrand, HB	104	590	5.7
1960 Wayne Schumacher, HB	109	414	3.8
1961 Dave Parker, QB-HB	143	759	5.3

PASSING	PA	PC	Pct.	Yards	TDs
1957 Jim Hooten, QB	16	4	25.0	64	1
1958 Lynn Elliott, QB	94	45	47.8	604	4
1959 Jim Hooten, QB	67	31	46.2	445	5
1960 Jim Hooten, QB	82	37	45.1	570	4
1961 Dave Parker, QB-HB	47	14	29.8	169	2

PASS RECEIVING	Catches	Yards	TDs
1957 Neil Dreiling, E	5	71	0
1958 Jim Maska, HB	13	210	2
1959 Cliff Leiker, E	11	256	3
1960 Cliff Leiker, E	29	614	4
1961 Wayne Schumacher, HB	5	59	1

PUNTING	Punts	Yards	Avg.
1957 Chuck Vernon, FB	37	1183	30.9
1958 Chuck Vernon, FB	38	1349	35.5
1959 Jack Bordewick, QB	23	789	34.3
1960 Jack Richardson, HB	26	988	38.0
1961 Steve Worley, FB	7	243	34.7

SCORING	TD	EP	FG	Points
1957 Chuck Vernon, FB	8	0	0	48
1958 Chuck Vernon, FB	5	0	0	30
1959 Cliff Leiker, E	4	0	0	24
Wayne Schumacher, HB	4	0	0	24
1960 Cliff Leiker, E	4	0	0	24
Wayne Schumacher, HB	4	0	0	24
Jerry Brown, FB	4	0	0	24
1961 Dave Parker, QB-HB	9	0	0	54

PUNT RETURNS	Returns	Yards	Avg.
1957 Not available			
1958 Jim Maska, HB	3	24	8.0
1959 Cliff Leiker, E	7	54	7.7
1960 Ken Belisle, HB	9	58	6.4
1961 Dave Parker, QB-HB	7	73	10.4

KICKOFF RETURNS	Returns	Yards	Avg.
1957 Not available			
1958 Darrel Hildebrand, HB	9	237	26.3
1959 Larry Carrier, FB	7	137	19.8
1960 Wayne Schumacher, HB	12	223	18.5
1961 Dave Parker, QB-HB	17	422	24.8

Recent All-CIC Selections

(NOTE: The following are based on official All-CIC selections.)

1961

First Team: None

Second Team: Jim Baird, T; Dave Parker, B; Wayne Schumacher, B.

Honorable Mention: Ron Gardner, T; Larry Dreiling, G; Kirk Pope, G; Jim Sanderson, G; Jerry Strecker, C; Jim Lee, B; Steve Worley, B.

1960

First Team: Cliff Leiker, E; Wayne Schumacher, B.

Second Team: None

Honorable Mention: Jim Baird, T; Ron Campbell, C; Jim Hooten, B.

1959

First Team: Cliff Leiker, E.

Second Team: Darrel Hildebrand, B; Ron Campbell, C.

Honorable Mention: Gary Goodheart, T; Roland Buehler, G.

1958

First Team: Dennis Stegman, G.

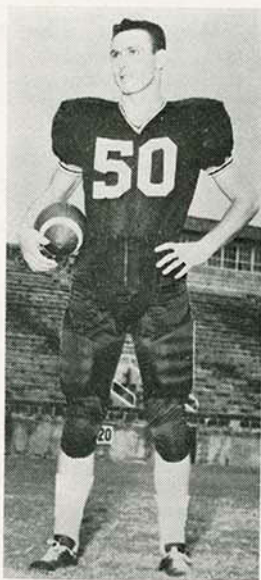
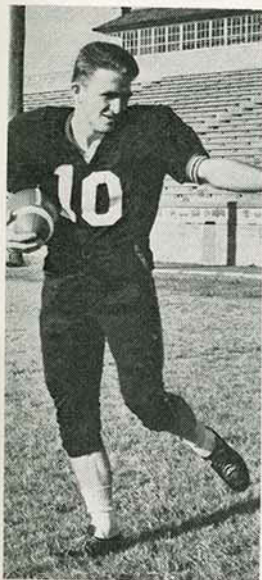
Second Team: Neil Dreiling, E; Charles Stahl, T; Chuck Vernon, B.

1957

First Team: Dennis Stegman, G.

Second Team: Chuck Vernon, B.

Dave Parker, all-CIC second team 1961; Cliff Leiker, all-CIC first team, 1959, 1960



Past Season Records

(Note: A college history compiled by the late L. D. Wooster, president-emeritus of Fort Hays State College, indicates that football was played with several opponents prior to 1913, but that these games were primarily with high school and "town" teams. The first season on which the school has complete scores is 1913; the first completely intercollegiate schedule was played in 1915.)

Year	Coach	Record	Points
1913	Ira Van Cleave	4-1-0	289- 39
1914	Ira Van Cleave	5-2-0	180- 41
1915	W. G. Speer	4-3-0	74- 67
1916	W. G. Speer	5-1-0	95- 48
1917	W. G. Speer	7-0-0	140- 27
1918	W. G. Speer	2-1-0	49- 39
1919	A. J. Robertson	3-6-0	74- 62
1920	George Woodward	2-5-1	108-108
1921	George Woodward	6-1-0	99- 55
1922	George Woodward	2-4-1	38- 67
1923	Bill Weidlein	4-3-2	94- 78
1924	Bill Weidlein	4-4-0	71- 81
1925	Bill Weidlein	2-4-1	37- 42
1926	Bill Weidlein	3-5-0	79- 60
1927	Bill Weidlein	3-5-1	64-118
1928	Bill Weidlein	3-3-2	26- 90
1929	Andrew F. Schoeppel	2-5-0	38- 61
1930	Jack Riley	2-5-2	34- 95
1931	Jack Riley	3-5-1	27-131
1932	Jack Riley	4-5-0	57- 58
1933	Jack Riley	6-2-2	145- 61
1934	Jack Riley	6-2-1	132- 64
1935	Jim Yeager	8-2-0	172- 57
1936	Paul Waldorf	6-3-0	140- 64
1937	Paul Waldorf	6-2-1	101- 56
1938	Paul Waldorf	7-2-0	181- 65
1939	Paul Waldorf	2-5-2	94-146
1940	Paul Waldorf	3-3-3	64- 45
1941	Paul Waldorf	1-6-2	89-123
1942	Bill Bearley	1-8-0	39-167
1943-44-45	No teams; World War II		
1946	Ralph Huffman	2-4-2	80-102
1947	Ralph Huffman	5-3-1	151-144
1948	Ralph Huffman	5-3-1	155- 92
1949	Ralph Huffman	5-4-0	143-161
1950	Ralph Huffman	3-4-2	80-131
1951	Ralph Huffman	5-4-0	135-119
1952	Ralph Huffman	1-6-2	75-178
1953	Ralph Huffman	3-4-1	125-105
1954	Ralph Huffman	7-2-0	180- 87
1955	Ralph Huffman	5-3-1	158-125
1956	Wayne J. McConnell	1-8-0	75-214
1957	Wayne J. McConnell	4-4-0	164-198
1958	Wayne J. McConnell	4-4-1	97-150
1959	Wayne J. McConnell	3-6-0	116-190
1960	Wayne J. McConnell	2-7-0	116-227
1961	Wayne J. McConnell	4-4-1*	119-145

*Victories and tie officially forfeited for using ineligible player.
175-173-34 4799-4583

Former Conference Champs

KANSAS CONFERENCE

1913	College of Emporia	1923	Friends U.
1914	Washburn U.		Emporia State
1915	Emporia State	1924	Pittsburg State
1916	Baker U.	1925	College of Emporia
1917	Fort Hays State		Bethany College
1918	College of Emporia	1926	Emporia State
1919	College of Emporia	1927	Baker U.
1920	Friends U.		College of Emporia
1921	Fort Hays State		Emporia State
1922	Baker U.		Kansas Wesleyan

CENTRAL INTERCOLLEGIATE CONFERENCE

1928	College of Emporia	1947	Emporia State
1929	Emporia State	1948	Emporia State
1930	Washburn U.	1949	Washburn U.
1931	Washburn U.		Pittsburg State
	Wichita U.	1950	Emporia State
1932	Wichita U.	1951	Emporia State
1933	Wichita U.		Pittsburg State
1934	Fort Hays State	1952	Emporia State
1935	Fort Hays State	1953	Washburn U.
	Pittsburg State		St. Benedict's
	Wichita U.	1954	Fort Hays State
1936	Fort Hays State		Washburn U.
1937	Wichita U.	1955	Pittsburg State
1938	Wichita U.	1956	St. Benedict's
1939	Wichita U.	1957	Pittsburg State
1940	St. Benedict's	1958	St. Benedict's
1941	Pittsburg State	1959	St. Benedict's
1942	Pittsburg State	1960	St. Benedict's
1943-46	No CIC competition	1961	Pittsburg State

Number of CIC Titles Earned

(Number of conference championships since 1928)

Team	Won	Tied	Last Title
Pittsburg State	5	3	1961
Wichita University	5	2	1939
Emporia State	5	1	1952
St. Benedict's	5	1	1960
Fort Hays State	2	2	1954
Washburn University	1	4	1954
College of Emporia	1	0	1928
Omaha University	0	0	

Past Records, All-Opponents

Opponent	Last Game	Games	W	L	T
Arizona State (Flagstaff)	1938	1	1	0	0
Augustana (S. D.)	1935	1	1	0	0
Baker U.	1920	3	1	2	0
Bethany College	1933	18	10	6	2
Bethel College	1942	1	0	1	0
Central Oklahoma	1956	2	0	2	0
Chadron (Neb.)	1938	5	5	0	0
College of Emporia	1941	12	8	3	1
Colorado Mines	1947	2	1	1	0
Colorado College	1961	12	2	10	0
Colorado State College	1940	2	0	1	1
Denver U.	1921	1	0	1	0
Eastern New Mexico	1961	2	0	2*	0
Emporia State	1961	35	10*	23*	2
Friends U.	1920	1	0	1	0
Haskell Institute	1936	3	1	2	0
Haskell Reserves	1917	3	3	0	0
Hastings (Neb.)	1939	4	2	1	1
Kansas State	1949	10	1	8	1
Kansas Wesleyan	1953	25	17	6	2
Kearney (Neb.)	1961	14	9	5*	0
McPherson	1940	6	3	3	0
New Mexico A & M	1948	2	0	2	0
Northwest Missouri	1961	12	7	5	0
Northwestern Oklahoma	1958	5	4	1	0
Oklahoma Baptist	1936	2	1	1	0
Oklahoma City U.	1940	2	0	0	2
Omaha University	1961	5	2	3	0
Ottawa U.	1922	2	2	0	0
Panhandle A & M	1956	2	1	1	0
Peru (Neb.)	1940	1	0	0	1
Pittsburg State	1961	34	8	20	6
Quincy (Ill.)	1951	2	1	1	0
Regis College	1942	1	1	0	0
Rockhurst	1949	2	1	1	0
Southwestern College	1959	32	20	7	5
Southwest Missouri	1955	2	2	0	0
Southwestern Oklahoma	1941	2	1	1	0
St. Benedict's	1961	25	5	17*	3
St. Mary's College	1927	12	7	5	0
St. John's College	1925	3	3	0	0
Sterling College	1941	15	9	4	2
Washburn U.	1961	27	6	18*	3
Wichita U.	1939	18	6	11	1

*Includes forfeit

1962 opponents in bold type

All-Time Coaching Records

Coach, Seasons	Years	W	L	T
Ira Van Cleave, 1913-14	2	9	3	0
W. G. Speer, 1915-18	4	18	5	0
A. J. Robertson, 1919	1	3	6	0
George Woodward, 1920-22	3	10	10	2
Bill Weidlein, 1923-28	6	19	24	6
Andrew Schoeppel, 1929	1	2	5	0
Jack Riley, 1930-34	5	21	19	6
Jim Yeager, 1935	1	8	2	0
Paul Waldorf, 1936-41	6	25	21	8
Bill Bearley, 1942	1	1	8	0
Ralph Huffman, 1946-55	10	41	37	10
Wayne McConnell, 1956-	6	18	33	2

The Past Few Seasons

1961 (4-4-1*)

FHS	24	Kearney (Neb.) State	0
FHS	16	Northwest Missouri State	17
FHS	6	Colorado College	14
FHS	19	Eastern New Mexico U.	19
FHS	0	Omaha University	26
FHS	7	Pittsburg State	41
FHS	12	Emporia State	7
FHS	21	St. Benedict's College	14
FHS	14	Washburn University	7

*Forfeited victories and tie

1960 (2-7-0)

FHS	20	Kearney (Neb.) State	12
FHS	9	Northwest Missouri State	14
FHS	19	Colorado College	28
FHS	0	Eastern New Mexico U.	25
FHS	19	Omaha University	18
FHS	7	Pittsburg State	44
FHS	14	Emporia State	27
FHS	21	St. Benedict's College	26
FHS	7	Washburn University	33

1959 (3-6-0)

FHS	19	Kearney (Neb.) State	14
FHS	8	Northwest Missouri State	13
FHS	20	Southwestern College	6
FHS	12	Pittsburg State	14
FHS	0	Emporia State	26
FHS	27	St. Benedict's College	45
FHS	18	Omaha University	6
FHS	12	Washburn University	19
FHS	0	Colorado College	47

1958 (4-4-1)

FHS	7	Kearney (Neb.) State	35
FHS	13	Northwest Missouri State	0
FHS	13	Colorado College	7
FHS	21	Southwestern College	0
FHS	16	Pittsburg State	7
FHS	7	Emporia State	7
FHS	0	St. Benedict's College	41
FHS	6	Washburn University	19
FHS	14	Northwestern Oklahoma	34

1957 (4-4-0)

FHS	0	Kearney (Neb.) State	27
FHS	40	Northwest Missouri State	27
FHS	20	Colorado College	22
FHS	40	Southwestern College	0
FHS	0	Pittsburg State	54
FHS	24	St. Benedict's College	38
FHS	21	Northwestern Oklahoma	14
FHS	19	Washburn University	16

Emporia game cancelled
due to influenza epidemic.

Past Series Records

(NOTE: Series records with 1962 opponents appear on pages carrying "A Look at Each Game." The following records are Fort Hays State's results with all other college opponents since 1913. Fort Hays State's score appears first.

ARIZONA STATE	
1938	20-19
AUGUSTANA (S. D.)	
1935	34-6
BAKER U.	
1917	7-0
1919	7-17
1920	0-21
BETHANY	
1915	6-0
.....	25-27
1916	8-6
1917	3-0
1918	21-6
1919	21-0
1920	7-7
1921	7-0
1922	0-7
1923	20-0
1924	6-14
1925	0-16
1926	0-11
1927	6-6
.....	0-20
1931	6-0
1932	13-0
1933	19-0
BETHEL	
1942	6-20
CENTRAL OKLAHOMA	
1955	12-19
1956	6-35
CHADRON (NEB.)	
1934	16-0
1935	26-0
1936	32-7
1937	7-0
1938	21-0
COLLEGE OF EMPORIA	
1916	13-12
1922	3-3
1923	12-10
1928	0-33
1929	6-7
1930	14-0
1931	3-0
1932	0-6
1933	9-6
1937	7-3
1938	20-0
1941	57-0
COLORADO MINES	
1946	14-35
1947	20-13
COLORADO STATE COLLEGE	
1932	0-7
1940	0-0
DENVER U.	
1921	7-41

EASTERN NEW MEXICO	
1960	0-25
1961	19-19
FRIENDS U.	
1920	0-7
HASKELL INSTITUTE	
1916	7-27
1920	6-33
1936	13-0
HASKELL RESERVES	
1915	9-0
1916	33-0
1917	28-7
HASTINGS (NEB.)	
1928	0-0
1929	0-3
1930	6-0
1939	14-0
KANSAS STATE	
1919	0-12
1920	0-14
1927	6-30
1928	7-21
1934	0-13
1935	3-0
1936	0-13
1939	7-34
1941	0-0
1949	0-55
KANSAS WESLEYAN	
1914	0-13
.....	16-7
1915	6-20
1916	20-0
1917	38-0
1919	26-0
1920	41-0
1921	18-0
1922	3-0
1923	3-3
1924	13-3
1926	14-9
1927	0-17
1930	0-0
1933	0-21
1934	41-0
1942	0-9
1946	14-0
1947	28-13
1948	21-0
1949	34-0
1950	26-13
1951	13-7
1952	20-34
1953	39-0

McPHERSON

1921	32-0
1922	14-16
1923	0-7
1924	0-20
1931	6-2
1940	32-0

NEW MEXICO A&M

1939	7-33
1948	14-27

**NORTHWESTERN
OKLAHOMA**

1937	21-6
1947	20-6
1948	20-0
1957	21-14
1958	14-34

OKLAHOMA BAPTIST

1935	42-0
1936	6-10

OKLAHOMA CITY U.

1939	0-0
1940	6-6

OTTAWA U.

1915	6-0
1922	18-13

PANHANDLE A&M

1933	33-0
1956	6-22

PERU (NEB.)

1940	7-7
------	-----

QUINCY (ILL.)

1950	26-25
1951	21-22

REGIS COLLEGE

1942	13-6
------	------

ROCKHURST

1948	7-20
1949	26-7

SOUTHWESTERN

1917	23-20
1919	0-10
1921	14-7
1928	0-0
1929	19-6
1930	0-21
1931	0-0
1932	10-0
1933	19-15
1934	19-7
1935	20-0
1936	25-0
1937	28-0
1938	28-0
1939	46-6
1940	0-14
1941	0-3
1942	0-13
1946	0-12
1947	28-0
1948	20-7
1949	14-0

1950	0-0
1951	34-0
1952	13-13
1953	33-6
1954	14-7
1955	7-7
1956	0-7
1957	40-0
1958	21-0
1959	20-6

SOUTHWEST MISSOURI

1954	6-0
1955	19-7

ST. MARY'S COLLEGE

1915	16-0
1916	14-3
1917	8-0
1919	0-7
1920	14-26
1921	14-7
1922	0-21
1923	7-6
1924	0-6
1925	6-7
1926	13-9
1927	6-0

ST. JOHN'S

1923	49-6
1924	28-6
1925	25-0

STERLING COLLEGE

1913	0-23
1914	0-7
	33-7
1917	33-0
1919	14-6
1920	40-0
1921	7-0
1923	0-0
1924	9-6
1925	3-0
1926	0-3
1927	14-0
1930	7-13
1940	13-0
1941	6-6

WICHITA U.

1915	6-20
1922	0-7
1923	0-20
1924	13-7
1925	0-0
1926	0-7
1928	7-0
1929	13-0
1930	0-14
1931	0-61
1932	3-19
1933	9-13
1934	12-7
1935	34-6
1936	14-0
1937	0-13
1938	7-15
1939	6-26

FHS Grid Records

(NOTE: Football records at Fort Hays State have not been kept with any regularity except since the 1957 season. For this reason, team and individual records in offense, defense, etc., are not available. The following marks concerning season records and scoring represent the beginning of an attempt to compile a complete set of FHS football records.)

WON-LOST RECORDS

Longest winning streak: 12 games, 1916-17
Longest losing streak: 12 games, 1941-42
Most victories, season: 8, 1935
Fewest victories, season: 1, 1941, 1942, 1952, 1956
Most ties, season: 3, 1940
Most consecutive ties: 2, 1939, 1940, 1941, 1952
Best season record (percentage): 1.00, 7-0-0, 1917
Worst season record (percentage): .111, 1-8-0, 1942, 1956

SCORING

Most points scored, game: 125, vs. Salina All-Stars, 1913 (town team); most points in intercollegiate game, 57 vs. College of Emporia, 1941.
Most points scored, season: 289, five games, 1913 (town teams and high schools); most points in intercollegiate season, 181, nine games, 1938.
Most points by opponents, game: 66, Cooper College, (now Sterling), 1919.
Most points by opponents, season: 227, nine games, 1960.
Fewest points scored, season: 26, eight games, 1928.
Fewest points by opponents, season: 27, seven games, 1917.
Most consecutive games without scoring: 4, 1941-42
Most consecutive games scoring: 30, 1952-56
Most consecutive games unscored upon: 3, 1915, 1917, 1925-26, 1935
Most consecutive games scored upon: 28, 1954-57

Tiger cheerleaders for 1962-63: (from left), Jane Schnoebelen, Lewis junior; Sandra Barnett, Garden City sophomore; Suzanne Day, El Dorado sophomore; Carol Lipp, Burdett sophomore; Celia Cannaday, Great Bend sophomore; Cindy Coen, St. John sophomore; Patty Potter, Stafford junior.



1962-63 Basketball Schedule

NOVEMBER	29	Southwestern Oklahoma	Hays
DECEMBER	1	Univ. of New Mexico	Albuquerque
	4	Kearney (Neb.) State	Kearney
	8	Open date	
	13	Colorado State College	Hays
	15	*Washburn University	Hays
	20	Arkansas A.M.&N.	Hays
	28-29	Campus Christmas Classic	Wichita
JANUARY	5	*Washburn University	Topeka
	12	*Emporia State	Hays
	15	Kansas Wesleyan U.	Salina
	26	*Pittsburg State	Pittsburg
	28	Southwestern College	Winfield
FEBRUARY	2	Pan American College	Hays
	4	*St. Benedict's College	Atchison
	9	*Omaha University	Omaha
	12	*Emporia State	Emporia
	16	*Pittsburg State	Hays
	23	*St. Benedict's College	Hays
	28	*Omaha University	Hays

* Conference games

Coach Cade Suran

Home games in Sheridan Coliseum

1962 Schedule

Sept. 22	NW Missouri
Sept. 29	Colorado College
Oct. 6	Kearney State
*Oct. 13	Omaha U.
*Oct. 20	Pittsburg State (Homecoming)
*Oct. 27	Emporia State
*Nov. 3	St. Benedict's
*Nov. 10	Washburn U.
Nov. 17	SW Oklahoma

*Conference games

