

Fort Hays State University

FHSU Scholars Repository

Reveille Yearbooks

Student Experience Collections

1950

Reveille - 1950

Fort Hays State University

Follow this and additional works at: <https://scholars.fhsu.edu/yearbooks>

Content Disclaimer

The primary source materials contained in the Fort Hays State University Special Collections and Archives have been placed there for research purposes, preservation of the historical record, and as reflections of a past belonging to all members of society. Because this material reflects the expressions of an ongoing culture, some items in the collections may be sensitive in nature and may not represent the attitudes, beliefs, or ideas of their creators, persons named in the collections, or the position of Fort Hays State University.

Recommended Citation

Fort Hays State University, "Reveille - 1950" (1950). *Reveille Yearbooks*. 36.
<https://scholars.fhsu.edu/yearbooks/36>

This Book is brought to you for free and open access by the Student Experience Collections at FHSU Scholars Repository. It has been accepted for inclusion in Reveille Yearbooks by an authorized administrator of FHSU Scholars Repository. For more information, please contact ScholarsRepository@fhsu.edu.

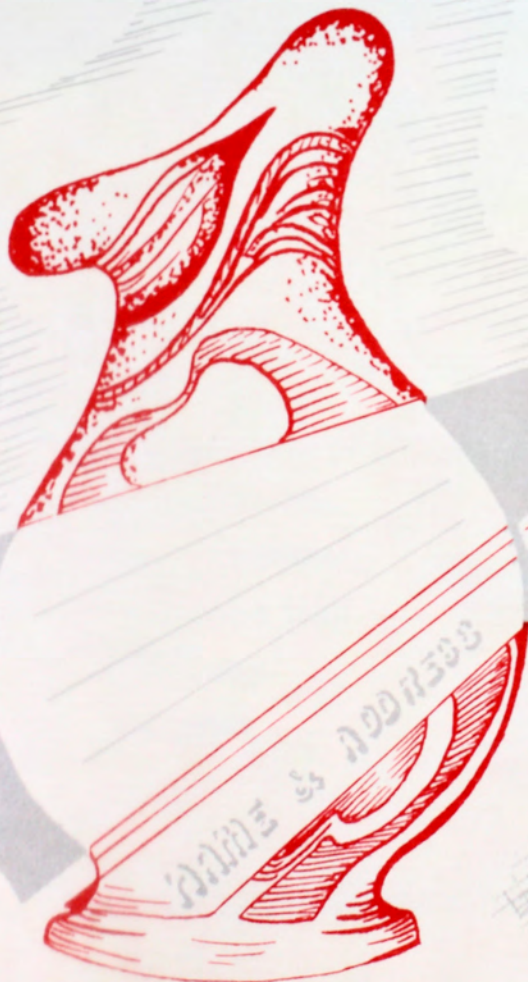
REVEILLE'50





1950

REVELLE



ST. HAYS KANSAS STATE COLLEGE

UNDER THE HANDS of master crafts-
men, raw material for the citizens of tomorrow's
world is moulded into great personalities like crude
clay being transformed by an expert potter.



STAFF

Editor	Roy Duell
Associate Editor	Mary Lee James
Business Manager	Bob Christensen
Art Editor	Dean Watt
Staff Photographer	Harold Ellis

CONTENTS

Administration	8
Athletics	97
Dedication	6
Faculty	45
Fraternities; Sororities	59
Homecoming	94
Organizations	71
Reveille Ball	93
Royalty	4
Students	13

REVEILLE



ALYCE BARSTOW



MARGARET FIELDS

REVEILLE



REVEILLE



PHYLLIS GARMAN



ELAINE JOHNSON



NORMA POWERS



LOIS JEAN ROBINSON



VERDELLES PFISTER



ANNIE RICE



MILES STANDISH



CHARLENE AUSTON
DILSAVER



EUGENE BIRD



PAUL MILLER



MARVIN MARESCH



MERRIL DURR



GILBERT DREILING



ROBERT HANEY



JOE HICKEL

ROYALTY

ספרות - תרבות - חינוך

ח





Maude McMIndes, to whom the 1950 Reveille is dedicated, is the personification of sincerity and honesty. Miss McMIndes possesses many of the traditional characteristics which make Fort Hays State great. A true friend and guide, she is never too busy for a moment of kindly advice. Her humor, wit, and friendly smile endears her to all who are acquainted with the personality—Maude McMIndes.



DR. M. C. CUNNINGHAM
PRESIDENT

DR. M. C. CUNNINGHAM
President of the College

Dr. Morton C. Cunningham was inaugurated as president of Fort Hays Kansas State College on September 30, 1949. He comes to Fort Hays from Marysville College at Marysville, Missouri.



DR. L. D. WOOSTER
*President Emeritus
Professor of Zoology*



DR. E. R. McCARTNEY
*Dean of College
Professor of Economics*



STANDLEE V. DALTON
*Registrar;
Assistant Professor of
Botany*



WALTER KEATING
Business Manager



MISS WILMA WOLF
Advisor to Women



DR. W. D. MORELAND
*Professor of Political Science
and Sociology and
Head of Department;
Advisor to Men.*



DR. FRED ALBERTSON
*Professor of Botany and Head
of Department;
Chairman of Biological
Sciences;
Chairman of Graduate Division*



MR. HUGH BURNETT
*Assistant Professor of
Political Science
Director of Extension Service.*

W H O



ROBERT ABERNATHY



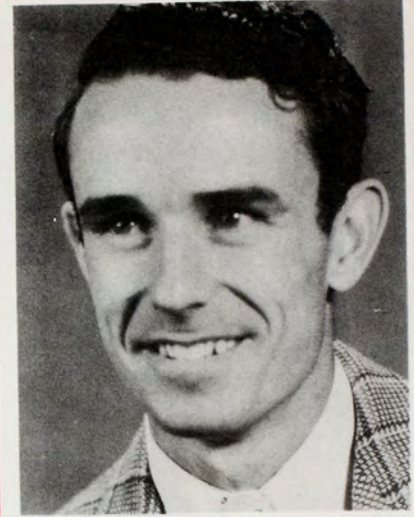
RICHARD BURNETT



JOE ANSTINE



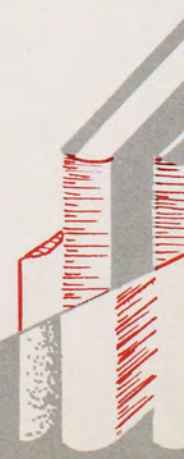
HARRIET BRIN



PAUL DUELL



GERALDINE GALE



STUDENTS

IN
AMERICAN
COLLEGES AND
UNIVERSITIES



ROBERT HANEY



WARREN KRAUS



GLEN THOMPSON



LAURENCE HULL



MARVIN MEADE



LELAND PAGE



LEO VAN SCYOC





BILL JELLISON
President

Consideration of student body problems and activities has been the primary concern of the student council. In connection with these problems and activities it has been necessary to formulate specific policies and then to provide the required machinery for action in these matters. Membership in the student council is made up of three members from each class, the president and two others who are elected, and three other members elected from the student body at large.

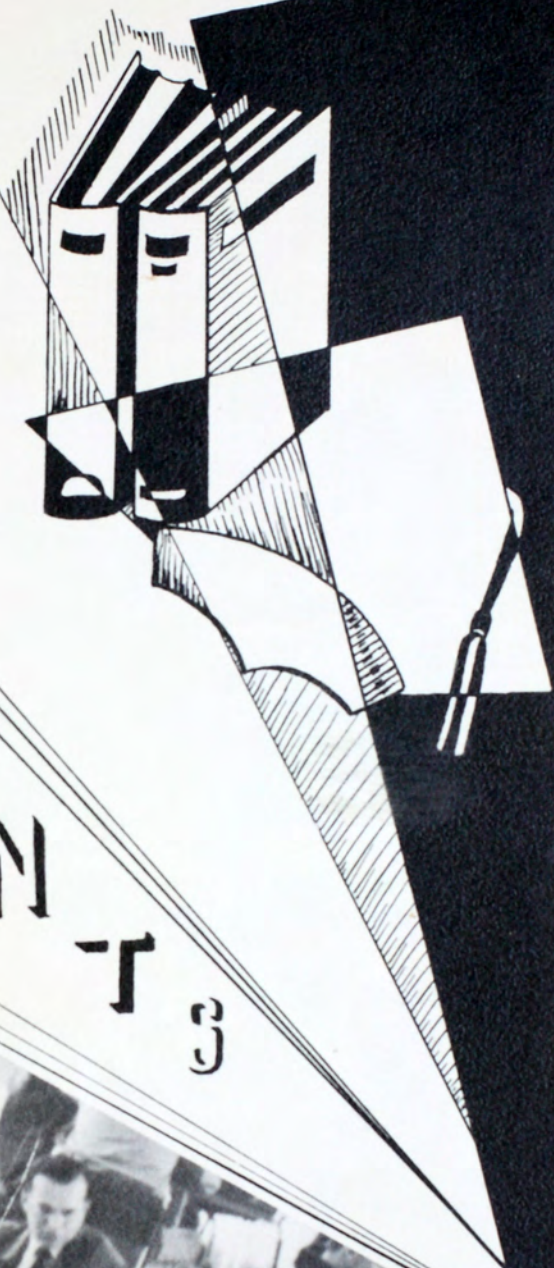
Officers for this year were: Bill Jellison, president; Don Nichol, vice-president; and Shirley King, Secretary-Treasurer. Dr. E. R. McCartney served as sponsor.



Membership of the Campus Booster Council is composed of a representative from fourteen different campus organizations. The members cooperate with the student council to promote good welfare on the campus. They maintain pep activities at pep assemblies and half time entertainment at basketball games. Stunt night, Homecoming 1949, was in charge of the Campus Booster Council.

Second semester officers are Patsy Earl, president; Jack Horner, vice-president; Patricia O'Toole, secretary; Betty See, treasurer. The sponsor is Wilmont Toalson.

STUDENT



SENIORS



OFFICERS

President RICHARD BURNETT
 Vice-President ALMA HUEFTLE
 Secretary-Treasurer ROBERT HANEY



ABERNATHEY, ROBERT M. B.S. in Chemistry. Gaylord, Kansas. Who's Who, Interfraternal Council, Delta Epsilon, Sigma Pi Sigma, Tau Kappa Epsilon.

ALEXA, LAWRENCE. A.B. Hays, Kansas. German Club.

ANDROES, WALTER I. B.S. in Business Administration. Newton, Kansas. Leader, International Relations, Pi Gamma Mu, Sigma Tau Gamma.



ANSTINE, JOE. Hays, Kansas. Who's Who.

ATHERTON, MELFORD. B.S. in Agriculture. Hooker, Oklahoma. Y.M.C.A.

BALDING, KEITH. B.S. in Industrial Arts. Medicine Lodge, Kansas. "K" Club, Vice-Pres. 4; Seventh Cavalry.



BALDWIN, NORMAN. B.S. in Physical Education. McCracken, Kansas. Engineers Club, Y.M.C.A., Kappa Sigma Kappa.

BALTHAZOR, LAWRENCE E. Palco, Kansas.

BARRETT, RICHARD ARTHUR. Bachelor of Music Education. Beloit, Kansas.

BERLAND, ROBERT L. B.S. Physical Education. Hays, Kansas.

BIEHLER, RUTH ANN. B.S. in Business Adm. Collyer, Kansas. Tigerettes, Y.W.C.A., Campus Booster Council, Alpha Sigma Alpha.

BILLINGER, ALVIN. B.S. in Physical Education. Hays, Kansas.

BIRDSELL, ALFRED. B.S. in Mathematics. Beloit, Kansas. Mathematics Club, Delta Epsilon.

BLEY, SOPHIA. B.S. in Elementary Education. Rozel, Kansas.

BOLAN, WILLIAM CECIL. B.S. in Industrial Arts. Plains, Kansas.

BRIN, HARRIET KEPLINGER. B. S. in Business Admin. Herndon, Kansas. Who's Who, Newman Club, Quill Club, Sec. 2, Pres. 3, Program Ch. 4; W.A.A. President 3, Treas. 4.

BRIN, WILLIAM J. B.S. in Agriculture. Plainville, Kansas. Newman Club.

BROWN, ROGER R. B. S. in Physical Education. Smith Center, Kansas.

BRUMFIELD, DON. B.S. in Chemistry. Jetmore, Kansas.

BULLOCK, LINFORD M. B.S. in Mathematics. Logan, Kansas. Engineers Club, International Relations, Mathematics Club, Y.M.C.A.

BURNETT, RICHARD E. A.B. in Political Science. Hays, Kansas. Who's Who.

CALVERT, CECIL. B.S. in Business Admin. Hays, Kansas.

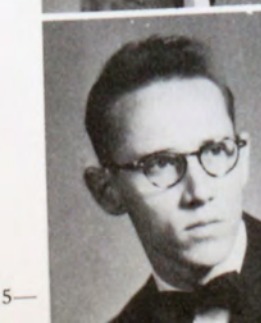
CAMPBELL, BILL. B.S. in Physical Education. Beloit, Kansas. "K" Club, Sophomore Class Vice-President 2; Phi Sigma Epsilon.

CASLER, IRVING E. A.B. in History. Little Falls, New York. German Club, Treas. 4; International Relations.

CHRISTENSEN, ARON R. B.S. in Business Administration. Osborne, Kansas. Reveille, Business Manager 4; Student Council, Kappa Sigma Kappa, Treas. 3, Pres. 4.

CLARK, EVELYN. B. S. in Elementary Education. Leoti, Kansas. Newman Club, Quill Club, Y.W.C.A.

COBB, AMY F. B.S. in Business Administration. Hays, Kansas. Y.W.C.A., Pi Gamma Mu.





COLYER, JAMES D. Political Science. Hays, Kansas. Newman Club, Pre-Medic Club, Tau Kappa Epsilon.
CORWIN, MERLIN. Wakeeney, Kansas.
CRABTREE, WILLIS E. B.S. in Math. Utica, Kansas. Engineers Club.



CUMMINGS, DALE W. B.S. in Psychology. Hays, Kansas. International Relations, Spanish Club, Tau Kappa Epsilon.
CURTIS, REX. B.S. in Physical Education. Wellington, Kansas.
DAWSON, DONALD. B. S. in Physical Ed. Ford, Kansas.



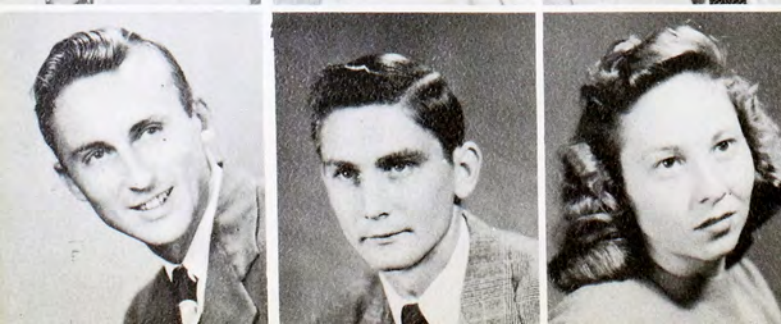
DENNISON, GEORGE R. B.S. in Business Administration. Hays, Kansas. Phi Sigma Epsilon.
DENTON, CLYDE. Bachelor of Music. Hays, Kansas.
DESCH, RALPH F. B.S. in Physics. Hays, Kansas. Engineers Club, Newman Club, Sigma Pi Sigma, Phi Mu Alpha.



DEYOE, FRED M. Crisfield, Kansas. Little Theatre, Treas. 2; International Relations Club, Pres. 3; Inter-Fraternal Council, Sec. 3; Tau Kappa Epsilon.
DIETRICH, HELEN. B.S. in Business Administration. Lenora, Kansas.
DUELL, PAUL M. A.B. in Chemistry. Ruleton, Kansas. Who's Who, Engineers Club, Y.M.C.A., Chaplain 3. Pres. 4; German Club, Delta Epsilon, Sigma Theta Epsilon.



DUELL, ROY. B.S. in Applied Art. Ruleton, Kansas. Reveille, Art Ed. 3, Editor 4; Y.M.C.A., Art Activity, Delta Sigma Theta, Sec. 4, Pres. 3, Sigma Theta Epsilon, Kappa Pi, A Cappella Choir.
DUELL, VELMA. B.S. in Home Ec. Hays, Kansas.
DUNCAN, JIM. A.B. in History. Salina, Kansas. Newman Club, Tau Kappa Epsilon.



DURR, MERRIL F. B.S. in Mathematics. Ransom, Kansas. Mathematics Club, Vice-Pres. 4; Seventh Cavalry, Sec.-Treas. 4; Inter-Fraternal Council, Pres. 3; Delta Epsilon, Sigma Pi Sigma, Vice-Pres. 2.
EARNEST, ROBERT L. A.B. in Political Science, Hays, Kansas. Inter-Fraternal Council, Pi Kappa Delta, Vice-Pres. 2, Pres. 4; Sigma Tau Gamma, Sec. 2.
EARNIST, MARGARET. Colby, Kansas.

EMRICH, FRANK. B.S. in Business Administration. Miltonvale, Kansas.

EVANS, IMO LEA. B.S. in Business Administration. Hays, Kansas. Tigerettes, Kappa Phi, Membership Ch. 3, 4; Sigma Alpha Iota, Sec. 3; Pres. of Sigma Alpha Iota, Sec. 4.

GALE, GERALDINE L. B.S. in Physical Education. Concordia, Kansas. Who's Who, Leader, International Relations, W.A.A., Vice-Pres. 4, Pres. 4; Y.W.C.A., Pres. 2, Devotions Ch. 3; Kappa Phi, Chaplain 1, 4; Women's Leadership, Sec. 4; A Capella Choir.

GEORGE, DORRELL G. A.B. Political Science. Sublette, Kansas. Leader, International Relations, Inter-Fraternal Council, Pres. 3; Sigma Tau Gamma.

GIBBENS, ROBERT. B.S. in Botany. Jetmore, Kansas.

GILMAN, FRANK. B.S. in Business Administration. Colby, Kansas. Y.M.C.A., Inter-Fraternal Council, Vice-Pres. 3; Phi Sigma Epsilon, Treas. 2, Vice-Pres. 3.

GLAZE, CHESTER V. B.S. in Education. Hays, Kansas. A Capella Choir. Men's Glee Club.

GOETZ, LaVERN. B.S. in Chemistry. Victoria, Kansas. Newman Club.

GORHAM, ROBERT. B.S. in Business Administration. Turon, Kansas. "K" Club, Tau Kappa Epsilon, Treas. 3, Vice-Pres. 4.

GORHAM, SAM. B.S. in Business Administration. Turon, Kansas. International Relations, Y.M.C.A., Treas. 2, Tau Kappa Epsilon.

GRASS, ROBERT D. A.B. in Physics. Hays, Kansas. Spanish Club, Phi Mu Alpha.

GUY, RALPH. B.S. in Business Administration. Hays, Kansas.

HAGUE, JACK. B.S. in Physical Education. Oberlin, Kansas.

HANEY, ROBERT. A.B. in Psychology. Russell, Kansas. Who's Who.

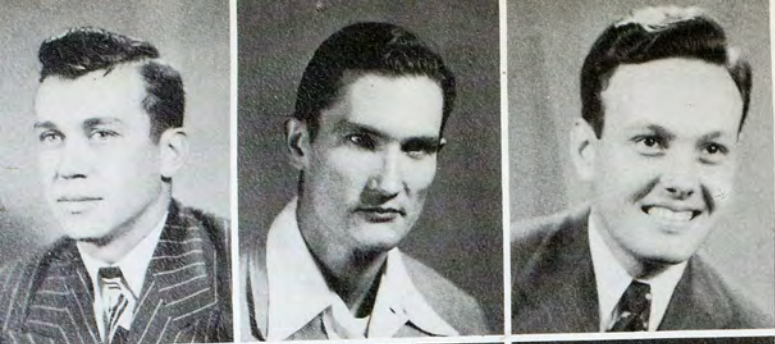
HANSON, RUSSELL A. A.B. in Sociology. Mankato, Kansas. International Relations Club, Spanish Club, Y.M.C.A.

HARSH, DONALD EUGENE. B.S. in Physical Education. Stockton, Kansas.

HAWES, ROBERT EDWARD. A.B. in Economics. Deerfield, Kansas. German Club, International Relations, Sigma Tau Gamma, Treas. 2.

HEARON, DALE MARSHALL. B.S. in Physical Education. Geneseo, Kansas. Tau Kappa Epsilon.





HERTEL, DONALD LEE. B.S. in Physical Education. Hays, Kansas.

HIBBERT, JOHN. A.B. in English. Elkhart, Kansas. Leader, Little Theatre, Y.M.C.A., Art Activity, Vice-Pres. 2, Alpha Psi Omega, Sigma Chi.

HOPKINS, J. P. B.S. in Business Administration. Claf-
lin, Kansas. Pi Gamma Mu.



HUEFTLE, ELMA. B.S. in Education. Oakley, Kansas. A Capella Choir, German Club, Student Council, Tigerettes, V.-Pres.; W.A.A., Y.W.C.A., Women's Leadership, Campus Booster Council, Kappa Phi, Sigma Alpha Iota, Class Vice-Pres. 4.

HULL, LAURENCE L. Bachelor of Music. Woodston, Kansas. Who's Who, Seventh Cavalry, Phi Mu Alpha, Pres. 4; Sigma Tau Gamma.

HULL, MARVEL. Bachelor of Music. Woodston, Kansas. Who's Who, Women's Leadership, Vice-President 3; Band, A Capella Choir, Sigma Alpha Iota, Pres. 3, Vice-Pres. 4.



JAMES, MARY LEE. B.S. in Physical Education. Stockton, Kansas. Reveille, 2, 3, Assoc. Ed. 4; Tigerettes, 1, 2, 3, Pres. 4; W.A.A., Panhellenic Council, Treas.; Campus Booster Council, Alpha Sigma Alpha, Vice-Pres. 2, Sec. 3, Reg. 4.

JEPSEN, VERNA. Lincoln, Kansas.

JOHNSON, ADLEY E. B.S. in Business Administration. Salina, Kansas. Pi Gamma Mu.



JOHNSON, CHARLES S. B.S. in Agriculture. Hays, Kansas.

JOHNSTON, HARRY. B.S. in Physical Education. Zurich, Kansas.

KEITHLINE, ANDREW. B.S. in General Science. Wellington, Kansas.



KELLUM, FRED. Dodge City, Kansas.

KING, EDSEL. B.S. in Agriculture. Dombey, Oklahoma. Y.M.C.A., Collegiate 4-H Club.

KLENK, HARRIETTE M. B.S. in Education. Waukeeneey, Kansas. Y.W.C.A., Kappa Phi, Sec. 4; Band, Sigma Sigma Sigma.



KNOWLES, RUPERT M. B.S. in Physical Education. Hays, Kansas.

KRAUS, WARREN CARL. B.S. in Botany. Hays, Kansas. Who's Who.

KRAUSE, GAYLE ALTON. B.S. in Physical Education. Bellville, Kansas.

KRAUSE, PAUL EUGENE. B.S. in Agriculture. Scott City, Kansas.

KUHN, HERBERT. A.B. in Economics. Moreland, Kansas. German Club, Newman Club, Tau Kappa Epsilon.

LEBSACK, MARJORIE. A.B. in Music. Hays, Kansas. Tigerettes, Campus Booster Council, Cheerleader, Delta Sigma Epsilon, Pres. 3, 4; Sigma Alpha Iota, Treas. 2, 3; Choir, Orchestra, Orchesis Club.

LEUZLER, DON. B.S. in Physical Education. Almena, Kansas. "K" Club.

MACY, WARREN. B.S. in Education. Woodston, Kansas. Y.M.C.A.

MAHONEY, LORITA. B.S. in Home Economics. Dorrance, Kansas.

MAHONEY, ROBERT. A.B. in History. Bunker Hill, Kansas.

MAPES, BOB. B.S. in Art. Norton, Kansas. Leader, Art Activity, Sigma Theta Epsilon, Kappa Pi, Secretary-Treas. 4.

MARXMILLER, REX. B.S. in Physical Education. Smith Center, Kansas.

MATHESON, WAYNE. B.S. in Business Administration. Natoma, Kansas. Engineers Club, Y.M.C.A., Young Republicans Club.

MAXWELL, MADELINE. B.M. in Music. Hays, Kansas.

MCCALL, RICHARD. B.S. in Business Administration. Wakeeney, Kansas. Leader, Ed. 4; International Relations Club, Y.M.C.A., Vice-Pres. 3, Pres. 4; Sigma Theta Epsilon, Young Republicans Club, Tau Kappa Epsilon.

MCDANIEL, CLARENCE. B.S. in Physical Education. Goodland, Kansas.

McKINLEY, MYRON. B.S. in Agriculture. Mullinville, Kansas.

McNUTT, TED. Hays, Kansas.

McVEY, JAMES R. B.S. in Agriculture. Hill City, Kansas. Kappa Sigma Kappa.

MEADE, MARVIN. A.B. in Pol. Science. Hays, Kansas. Who's Who, Pi Gamma Mu, Pres. 4; Phi Sigma Epsilon.

MILLER, BONNIE. A.B. in English. Macksville, Kansas. Leader, Quill Club, Sec. 3; W.A.A., Y.W.C.A., Women's Leadership, Student Publications Com.





MILLER, PAUL EDWIN. B.S. in Industrial Arts. Jetmore, Kansas. Campus Booster Council, Vice-Pres. 2, Pres. 3; Kappa Sigma Kappa.

MILLS, ARLIN E. A.B. in Chemistry. Ellis, Kansas. Sigma Tau Gamma.

MILLS, DEAN B. B.S. in Elem. Education. Hays, Kansas.



MITCHUM, GLEN. B.S. in Bus. Adm. Mission, Kansas.

MLYNER, ROBERT DALE. B.S. in Industrial Arts. Ellsworth, Kansas.

MOECKEL, DONALD LEROY. B.S. in Physical Education. Hays, Kansas.



MOORE, SAMUEL J. B.S. in Agriculture. Otis, Kansas.

MORGAN, PHILIP B. A.B. in Zoology. Atwood, Kansas. International Relations, Y.M.C.A., Campus Booster Council, Vice-Pres. 4; Kappa Sigma Kappa, Inter-Fraternal Council.

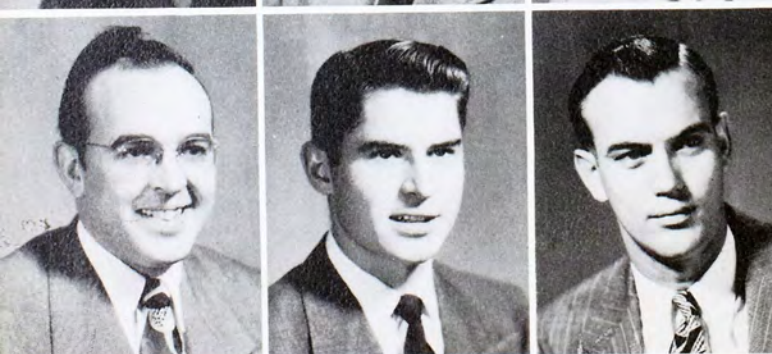
MORLAN, RICHARD L. B.S. in Agriculture. Protection, Kansas. Sigma Tau Gamma.



MOSER, THEARON A. B.S. in Art. Hays, Kansas. Little Theatre, Art Activity, Kappa Pi, Pres. 4.

MURPHY, JOHN E. B. S. in Education. Garden City, Kansas. "K" Club, Seventh Cavalry, Student Council Pres. 3; Phi Sigma Epsilon.

NICHOL, DONALD. B.S. in Physical Education. Palco, Kansas.



ORTH, WILLIAM. B.M. in Music Education. Mount Hope, Kansas.

PAGE, LELAND F. B.S. in Mathematics. Prairie View, Kansas. Who's Who, International Relations, Math Club, Pres. 4; Seventh Cavalry, Vice-Pres. 4; Student Council, Y.M.C.A., Treas. 2; Delta Sigma Theta, Class Pres. 2; Sigma Pi Sigma, Sec. 4; Kappa Sigma Kappa, Treas. 2.

PAUSTIAN, CARL O. B.S. in Business Administration. LaCrosse, Kansas.



PELPHREY, CHARLES. B.S. in Agriculture. Ashland, Kentucky.

PENNINGTON, RUSSELL. Bogue, Kansas.

POHLMAN, FRED. B.S. in Physical Education. Natoma, Kansas. "K" Club, Engineers Club, Y. M. C. A., Campus Booster Council, Kappa Sigma Kappa.

RATHBUN, HARRY. B.S. in Education. Traer, Kansas.

ROBERTS, WILFRED N. B.S. in Business Administration. Hill City, Kansas. Kappa Sigma Kappa.

ROBINSON, ROBERT K. B.S. in Chemistry. Osborne, Kansas.



ROEDER, MELVIN W. B.S. in Industrial Arts. Prairie View, Kansas.

RUTH, JANE ELIZABETH. A.B. in Speech. Eldorado, Kansas. Little Theatre, Spanish Club, W.A.A., Y.W.C.A., Vice-Pres.; Campus Booster Council, Sigma Sigma Sigma, Pres. 3, 4; Alpha Psi Omega.

SARVER, MELBA. B.S. in Business Administration. Hays, Kansas. Reveille, Y.W.C.A., Theta Sigma Upsilon.



SCHEIB, DALE C. B.S. in Business Administration. Lyons, Kansas. Phi Sigma Epsilon.

SCHMIDT, GEORGE B. Beloit, Kansas.

SCHRAEDER, WILBUR W. B.S. in Business Administration. Larned, Kansas. Phi Sigma Epsilon.



SCHUHS, FORREST. Lamont, Kansas.

SCHUHS, WANDA. Dresden, Kansas.

SCOTT, CLYDE A. A.B. in Zoology. Belleville, Kansas. Phi Sigma Epsilon.



SEACHORD, CLARIECE B. B.S. in Home Economics. Morrowville, Kansas. Home Economics Club. Y.W.C.A.

SHOTTENKIRK, LOWELL. B.S. in Business Administration. Garfield, Kansas. International Relations Club.

SIMMONS, FREDERICK L. B.S. in Physical Education. Mankato, Kansas. "K" Club, Sec.-Treas. 4.



SKUBAL, RAYMOND. B.S. in Physical Education. Dresden, Kansas.

SMRCHA, GLEN OLEN. B.S. in General Science. La-Crosse, Kansas.

SOMERS, MARILYN RHEA. B.S. in Physical Education. Dodge City, Kansas. W.A.A., Vice-Pres. 4.





SNEDDON, MILTON S. B.S. in Sociology. Ransom, Kansas.

SNOOK, NORVIN. A.B. in Political Science. Ford, Kansas.

SPOMER, ESTHER. B.S. in Home Economics. Alexander, Kansas.



STEWART, ELEANOR. B.S. in Education. Hill City, Kansas.

STUPPY, CHARLES E. B.S. in Physical Education. Lykens, Pennsylvania. Leader, Reveille, Phi Sigma Epsilon.

SULLIVAN, WARD. A.B. in Chemistry. Hays, Kansas.



TALBERT, CLINTON. B.S. in Chemistry. Ellis, Kansas.

TEASLEY, WARREN. B.S. in Business Administration. Natoma, Kansas. International Relations. Tau Kappa Epsilon.

THARP, SHIRLEY. B.S. in Physical Education. Russell, Kansas. Tigerettes, W.A.A., Reveille, Alpha Psi Omega, Alpha Sigma Alpha, Leader, Little Theatre, Campus Booster Council, Band.



THOMPSON, GLEN. A.B. in History. Beeler, Kansas. Little Theatre, German Club, International Relations, Seventh Cavalry, Y.M.C.A., A Capella Choir, Who's Who.

THORNBURG, DALE W. B.S. in Physical Education. Oberlin, Kansas. "K" Club.

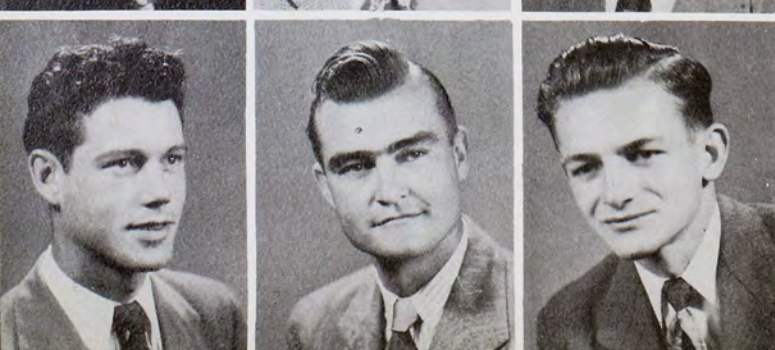
THORNBURG, ELDON A. A.B. in Mathematics. Bloomington, Kansas. Engineers Club, German Club, Mathematics Club, Phi Sigma Epsilon.



THORNS, JOHN. A.B. in Art. Hays, Kansas. German Club, Art Activity, Kappa Pi, Phi Mu Alpha.

TOMANEK, JOHN. A.B. in Political Science. Collyer, Kansas.

TRIBLE, BRUCE C. A.B. in Music. Palco, Kansas. Phi Mu Alpha.



VAN SCYOC, LEO. A.B. in English. Osborne, Kansas. Leader, International Relations Club, Pres. 4; Seventh Cavalry, Spanish Club, Pi Gamma Mu, Vice-Pres. 4; Sigma Tau Gamma, Who's Who.

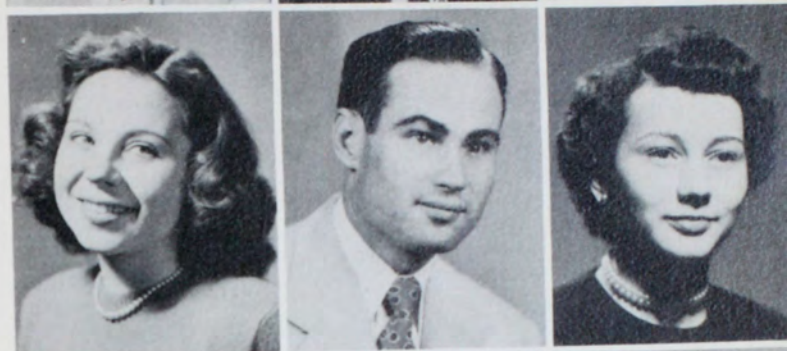
WAGNER, HENRY ROBERT. B.S. in Business Administration. Kinsley, Kansas. International Relations Club, Vice-Pres. 4; Tau Kappa Epsilon, Treas. 4.

WAHL, ORVILLE G. B.S. in Mathematics. McCracken, Kansas. Engineers, Mathematics Club, Tau Kappa Epsilon.

WALTERS, RALPH. B.S. in Business Administration. Hays, Kansas. Newman Club, Sigma Tau Gamma.
 WASINGER, FELIX B.S. in Business Administration. Hays, Kansas. Sigma Tau Gamma.
 WEBER, NORMA. B.S. in Physical Education. Hays, Kansas.



WELCH, LOIS. A.B. in Art. Great Bend, Kansas. Little Theatre, Spanish Club, Home Economics Club, Tigerettes, Alpha Psi Omega.
 WILDS, NEFF E. B.S. in Agriculture. Collyer, Kansas. International Relations. Y.M.C.A. Sigma Theta Epsilon. Vice-Pres., 4.
 WILLIAMS, ELAINE. A.B. in Music and English. Women's Leadership, Vice-Pres. 3; Kappa Phi, Vice-Pres. 3; Sigma Alpha Iota, Class Sec.-Treas., 1.



WYLIE, M. LYNN. B.S. in Business Administration. Quinter, Kansas. International Relations, Pi Gamma Mu, Phi Sigma Epsilon.
 BLAZER, ROBERT. B.S. in Physical Education. Wellington, Kansas. "K" Club, Pres. 4; Sigma Tau Gamma.



PICKEN HALL



THE FATHER OF THE PRESIDENT OF THE SENIOR CLASS

JUNIORS

OFFICERS

President.....EUGENE BIRD
 Vice-President.....ALYCE BARSTOW
 Secretary-Treasurer.....WILLIAM MAHONEY



DILSAVER (AUSTON),
 CHARLENE YVONNE
 Alexander, Kansas

BARBER, ROY JESSE
 Hugoton, Kansas

BRACK, CONRAD MILES
 Great Bend, Kansas

CARTER, MERALD
 Hays, Kansas



BARSTOW, ALICE
 Macksville, Kansas

BETTS, MARION JOAN
 Oberlin, Kansas

CHAMBERS, JOHN
 Ellis, Kansas

CONNER, WARREN
 Gypsum, Kansas



BINGAMAN, LeROY J.
 Garfield, Kansas

BIRD, EUGENE A.
 Hays, Kansas

CRAFT, DAVIE
 Garden City, Kansas

CRIPPEN, DONALD
 Gove, Kansas



BISSING, AILEEN WILSON
 Hays, Kansas

BLUM, ROBERT F.
 Menlo, Kansas

CRONN, ARDEN
 Smith Center, Kansas

DELLETT, KENNETH
 Hays, Kansas





DREILING, GILBERT
Victoria, Kansas
DROEGEMEIER, FRANCIS
Geneseo, Kansas

GEARHARDT, BILLY DONALD
Lenora, Kansas
GIEBLER, ROBERT JOSEPH
Hays, Kansas



DUER, RUSSELL
Hays, Kansas
EHLING, PAUL
Abbyville, Kansas

GILES, MELVA LEE
Hopewell, Kansas
GINTHER, FRANK WILLIAM
Hays, Kansas



ELLIS, HAROLD
Kingman, Kansas
ELLIS, WANDA
Kingman, Kansas

GOETZ, GLADYS MARIE
Victoria, Kansas
GRIMES, CAROL DEE
Alton, Kansas



ERICKSON, CURTIS
Jennings, Kansas
EVERS, CARLOS
Mexico City, Mexico

GROWE, KENNETH E.
Fulton, New York
HAGGARD, HELEN LOUISE
Gorham, Kansas



FARLEY, JAMES DOYLE
Meade, Kansas
FISCHLI, RICHARD JUNIOR
Speed, Kansas

HAMBURG, ELAINE M.
Ellis, Kansas
HERRMAN, JOAN MARIE
LaCrosse, Kansas



FOSTER, DONALD WYETH
Satanta, Kansas
FOULK, DUANE ALFRED
Turon, Kansas

HERRON, ROBERT WAYNE
Spearville, Kansas
HICKEL, JOE MATTHEW
Ellinwood, Kansas



FOWLER, DON DUANE
Kalvesta, Kansas
FROSS, FLORENCE MARIE
Hays, Kansas

HILL, WILLIAM DEAN
Las Animas, Colorado
HOBBS, EARL ROBERT
Pueblo, Colorado





HOFFMAN, HARLAND LAMONT
Ellinwood, Kansas
HOOVER, WILFORD DONALD
Stockton, Kansas

LATAS, WANDA RUTH
Rozel, Kansas
LEBSACK, LUANNE JOY
Otis, Kansas



HOOVER, ROBERT A.
Winona, Kansas
HORNER, HARLEY BRINKER
Goodland, Kansas

LEIKER, IRENE AGNES
Hays, Kansas
LUCE, DOROTHY LUCILLE
Collyer, Kansas



HUBBARD, JOSEPH E.
Waldo, Kansas
JELLISON, MARGARET
Hays, Kansas

MALONE, ROBERT ELDON
St. Francis, Kansas
MAXWELL, JAMES ELWYN
Hays, Kansas



JELLISON, BILLY D.
Hays, Kansas
JOHNSON, RUTH
Wilson, Kansas

McCLELLAN, ROBERT LEE
Zurich, Kansas
McCONNOUGHAY, JOHN G.
Larned, Kansas



KEELEY, TERRY DEAN
Pawnee Rock, Kansas
KEENER, WILLIAM JEFFERSON
Rush Center, Kansas

McKEE, AILEEN
Hays, Kansas
MILLER, ABRAHAM M.
Wakeeney, Kansas



KENYON, ANNE L.
Wakeeney, Kansas
KING, SHIRLEY ANN
Ellis, Kansas

MILLS, JOHN F.
Bunkerhill, Kansas
MILLS, LAURA JANE
Copeland, Kansas



KVASNICKA, CLAIRE ANN
Wakeeney, Kansas
LANCASTER, PATRICIA JEAN
Chicago 18, Illinois

MOORE, STANLEY WALTER
Hays, Kansas
MORLAN, MARTHA
Protection, Kansas





MULLENDER, JOHN
Waldo, Kansas
NEELY, JAMES U.
Hays, Kansas

RICKE, ROBERT
Zenda, Kansas
RIGGS, ROBERT
Hays, Kansas



NORCROSS, J. D.
Russell, Kansas
OLIPHANT, MARCUS
Offerle, Kansas

RITTER, HAROLD
Hoisington, Kansas
ROBINSON, FRANCES ELLEN
Osborne, Kansas



ORMSBEE, ELEANOR
Smith Center, Kansas
ORTH, LEROY
Hays, Kansas

ROCKWELL, ELEANOR ELAINE
Hays, Kansas
SCHEUERMAN, MARVIN C.
Alexander, Kansas



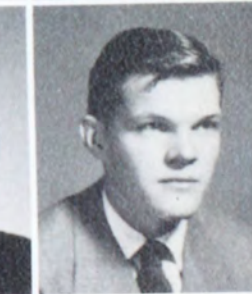
O'TOOLE, PATRICIA
Arnold, Kansas
PAXSON, JIMMIE
Penokee, Kansas

SCHLICHER, CLARETA ANN
Hoxie, Kansas
SCHMIDTBERGER, LOREN F.
Hays, Kansas



PETRASEK, GEORGE
Jennings, Kansas
PITTMAN, DON
Russell, Kansas

SCHULTE, RAYMOND B.
Walker, Kansas
SCHWERTFEGER, KENNETH
Satanta, Kansas



POHLMAN, HENRY
Natoma, Kansas
POWERS, NORMA
Bunkerhill, Kansas

SEUSER, JAMES LEE
Bison, Kansas
SHRAUNER, RALPH
Protection, Kansas



PYWELL, CHARLES
Palco, Kansas
RAY, EUGENE
Ford, Kansas

SMITH, ALBERT GRANT
Ransom, Kansas
SMITH, DUANE A.
Barbourville, Ky.





SMITH, JOHN JULIUS
Ulysses, Kansas
SNAVELY, RUBY
Sublette, Kansas

WASINGER, LEONA
Hays, Kansas
WATT, DEAN
Healy, Kansas



STADELMAN, JOHN
Hays, Kansas
TEDFORD, LAWRENCE DELBERT
Minneola, Kansas

WEILERT, CHRISTINE
Hays, Kansas
WILSON, SHIRLEY
Hays, Kansas



THOMPSON, ROBERT
Satanta, Kansas
THURLOW, NOVALINE
Hays, Kansas

WORLEY, ALICE MARIE
Paradise, Kansas
WYLIE, IRENE M.
Phillipsburg, Kansas



TOWNLEY, HOPE
Glade, Kansas
UNDERWOOD, PATSY
Agra, Kansas

WYCOFF, MARVIN
Larned, Kansas
YOUNG, LOLA JEA
Macksville, Kansas



ZANE, RUSSELL R.
Protection, Kansas



SOPHOMORES

BLANK, BERT
Grainfield, Kansas



OFFICERS

President WAYNE BRUBAKER
Vice-President JO EVA HINKHOUSE
Secretary-Treasurer BARBARA BILLINGS

BOGART, QUENTIN JOSEPH
Hays, Kansas

BOTT, ERMA LUCILE
McCracken, Kansas



ACRE, LOIS EVELYN
Sharon Springs, Kansas
AHRENS, JAMES DEAN
Greensburg, Kansas
ALBRECHT, MARILYN JUNE
Smith Center, Kansas

BRANDYBERRY, W. ARDEN
Hill City, Kansas



ARNOLD, NORMA ROSE
Plainville, Kansas
BAKER, DON EUGENE
Great Bend, Kansas
BARNES, ILLA ELIZABETH
Hays, Kansas

BROWN, DONNA LEE
Paradise, Kansas



BARRY, JEAN
Smith Center, Kansas
BAUS, RAYMOND
Alexander, Kansas
BENDA, OSCAR DALE
Colby, Kansas

BRUBAKER, CHARLES WAYNE
Hugoton, Kansas



BILLINGS, BARBARA B.
Penokee, Kansas
BINDER, DORIS MARGUERITE
Hays, Kansas
BISEL, BONNIE LEE
Hopewell, Kansas

BRUNDAGE, FLORINE MARIE
Brownell, Kansas





BURMEISTER,
FERDINAND HENRY
Claffin, Kansas



BUSS, DARREL EDWARD
Stockton, Kansas



CAMP, CURTIS
Natoma, Kansas



CARDENAS, ALEJANDRE
Mexico



CARSON, DORIS
Russell, Kansas



CASSEL, DONNA
Hill City, Kansas



CLARK, DONALD
Dighton, Kansas

CLARK, ROBERT
Beloit, Kansas
CONNER, GUY
McCracken, Kansas
COSTELLO, LEW
Scott City, Kansas

CRAMER, GEORGE
Healy, Kansas
CROSSLAND, KENNETH
Ransom, Kansas
CRUMLY, ANN
Colby, Kansas

DARBY, DONNA
Hays, Kansas
DAVIS, JAMES
Hill City, Kansas
DeBOER, VESTA
Prairie View, Kansas

DECKER, MELVIN
Bison, Kansas
DEETER, CHARLES
Norcator, Kansas
DEUTCHER, CHARMAINE
Ellis, Kansas

DILLARD, R. M.
Hays, Kansas
DOUGHERTY, WALTER
Natoma, Kansas
DUNCKER, T. CARLENE
Ford, Kansas

EARL, PATSY
Hays, Kansas
EHRlich, D'NELLE
Hays, Kansas
EKEY, DENZELL
Codell, Kansas

ESPINOAS, ALPONSO
Mexico
EVANS, VIRGIL
Gove, Kansas
EYMAN, E. JOYCE
Johnson, Kansas





FICKEN, DALE LEONARD
Bison, Kansas
FILBERT, EDWARD DAVID
Brownell, Kansas
FINNEY, JACK L.
Hays, Kansas

HARVEY, MARY LOUISE
Bushton, Kansas



FLEENOR, ROBERT MERLE
Healy, Kansas
FLEMING, DOROTHY IRENE
Kanopolis, Kansas
FOSS, ROBERT EUGENE
Larned, Kansas

HAWKS, LOWELL E.
Hays, Kansas



FOX, MARY LEE
Rozel, Kansas
FUNK, RAMONA LEE
Ness City, Kansas
GARMAN, PHYLLIS ARLENE
Courtland, Kansas

HIBBS, DORTH EUGENE
Osborne, Kansas



GARRISON, JAMES TURNER
Osborne, Kansas
GIBSON, MERYL LESTER
Phillipsburg, Kansas
GORE, DORTHE DEE
Sterling, Kansas

HINKHOUSE, JO EVA
Palco, Kansas



GOURLEY, VIOLET LEA
Lincoln, Kansas
GRIFFITH, NADA
Wakeeney, Kansas
GRIFFITH, VADA G.
Wakeeney, Kansas

HOOKE, ELIZABETH
Winona, Kansas



HAGGARD, ROBERT HARSH
Gorham, Kansas
HALE, BARBARA JANE
Alton, Kansas
HALE, LOIS MYRTLE
Hays, Kansas

HORNER, WILMA ARDEANE
Goodland, Kansas



HAMILTON, ARTHUR JOHANN
Oberlin, Kansas
HANSON, VERNA JEAN
Colby, Kansas
HARRIS, JULIA ANN
Hays, Kansas

HOSKINS, DONALD LUTHER
Natoma, Kansas





HUFF, EILEEN GENEVA
Lebanon, Nebraska

JONES, ARTHUR R.
Hill City, Kansas
JONES, DONALD EDWARD
Ellis, Kansas
JURY, BARBARA JEANNE
Claffin, Kansas



HUSS, MERLE EUGENE
Stockton, Kansas

KESTER, E. LEWIS
Huntington, Ind.
KING, HOWARD C.
Agra, Kansas
KINSINGER, FLOYD ELTON
Ness City, Kansas



INGRAM, DOLORES YVONNE
Hays, Kansas

LAPPIN, RICHARD CECIL
Alexander, Kansas
LEIKER, SIGMUND L., JR.
Hays, Kansas
LINDNER, NORMAN GLENN
Garden City, Kansas



JACOBINI, MARGARET RUTH
Hays, Kansas

LOESCH, LEWIS WILLIAM
Raymond, Kansas
LOOMIS, ROBERT JR.
Alton, Kansas
LOSEY, LUTIE ANN
Gove, Kansas



JACOBS, VERNA LOU
Hays, Kansas

MANNING, PHYLLIS JEAN
Hays, Kansas
MARCY, DALE
Ransom, Kansas
McCORMICK, BARBARA LOU
Elkhart, Kansas



JANOUSEK, ARNOLD LEE
Kanona, Kansas

McPHERSON, ROBERT RAY
Natoma, Kansas
MEDINA, JUAN FRANCISCO
Valencia, Venezuela
MELROY, DAVID JAMES
Norton, Kansas



JOHNSON, MARGARET ELAINE
Jennings, Kansas

MILLER, JAY
Norton, Kansas
MITCHEL, EDWIN L.
Ellis, Kansas
MORRIS, MIRIAM
Plainville, Kansas





MORRISON, RICHARD
Protection, Kansas
MUNSELL, ELVERA
Hays, Kansas
MURRAY, LuELMA
Scott City, Kansas

RICHARDS, ROY
Offerle, Kansas



MYERS, MARY
Plains, Kansas
NEAL, LEROY CONRAD
Hays, Kansas
NEUMEYER, KATHLEEN
Alexander, Kansas

RITTER, LUGENE
Hoisington, Kansas



NEWTON, FRED K.
Grainfield, Kansas
NICHOL, DORA
Palco, Kansas
NIQUETTE, ERNEST
Arnold, Kansas

ROBERTS, THEO EDMOND
Quinter, Kansas



NOAH, CALVIN
Palco, Kansas
NOLTE, ROBERT
Healy, Kansas
ODOM, KENNETH
Macksville, Kansas

ROBINSON, LOIS JEAN
Hill City, Kansas



PARR, CONNIE
Pierceville, Kansas
PFISTER, VERDELLE
Pawnee Rock, Kansas
PINKSTON, MYRON
Seward, Kansas

ROBINSON, VALDA LEE
Ransom, Kansas



POKORNY, ROBERT
LaCrosse, Kansas
PRATT, NORMAND
Hays, Kansas
REINKING, RICHARD
Simpson, Kansas

ROTHENBERGER, BARBARA J.
Osborne, Kansas



REMMERT, MARVELLA
Frederick, Kansas
RHOADES, MARGARET
Ellis, Kansas
RICE, ANNIE
Hill City, Kansas

SCHEUERMAN, GAIL B.
Bazine, Kansas





SCHEUERMAN, LaVON ORVAL
LaCrosse, Kansas

SMITH, WARREN PAUL
Gove, Kansas
SPENA, ROSEMYRA
Wakeeney, Kansas
STARKEY, JERRY
Haviland, Kansas



SCHLEGEL, ELMAN L.
Otis, Kansas

STORMS, RALPH
Hugoton, Kansas
SUMPTER, WES
Downs, Kansas
TAYLOR, RUTH LA VERNE
Plainville, Kansas



SEACHORD, JAMES RICHARD
Steele City, Nebraska

TEGMEYER, LA VERNE
Wakeeney, Kansas
THON, CLIFFORD
Healy, Kansas
TOMLINSON, JOHN
Overland Park, Kansas



SEE, BETTY LOU
Ransom, Kansas

TREXLER, ALLEN
Hill City, Kansas
VAN LERBERG, DALE
Shawnee, Kansas
WARREN, PAULINE
Garden City, Kansas



SELTMANN, COLLEEN JUNE
Alexander, Kansas

WASINGER, LESTER
Hays, Kansas
WATT, BETTY
Almena, Kansas
WATT, ROY
Healy, Kansas



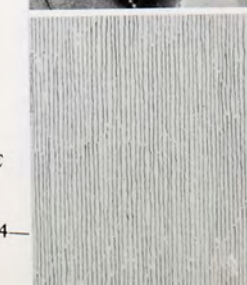
SIDEBOTTOM, DONNA
Dighton, Kansas

WEIDNER, MARY
Sublette, Kansas
WELLS, LON
Alexander, Kansas
WERHAN, DON
Hays, Kansas



SMITH, JAMES TIMOTHY
Stockton, Kansas

WILSON, ETHELMAE
Macksville, Kansas
ZEIGLER, ROBERT THEODORE
Collyer, Kansas



FRESHMEN

ADAMS, DOROTHY MAY
Hoxie, Kansas
ADAMS, MARY ANITA
Osborne, Kansas

ALBIN, DONALD LEE
Gove, Kansas
ALBIN, FRANCES ARLENE
Gove, Kansas

OFFICERS

President.....DON BURNETT
Vice-President.....HAROLD KRAUS
Secretary-Treasurer.....EVELYN CARLEY

ALLEN, WENDELL GORDON
Oberlin, Kansas
ANDERSON, PAUL LEON
Harlan, Kansas

ARCHER, BOBBY GENE
Ulysses, Kansas
ARENSMAN, DOROTHY LUCILLE
Bushton, Kansas
BATCHELOR, GERALD WAYNE
Wichita, Kansas
BEEDY, JOAN KATHLEEN
Agra, Kansas
BEERY, DORIS LEA
Cimarron, Kansas

AUSMUS, BETH ALENE
Russell Springs, Kansas
AUSTIN, MARILEE JO
Waldo, Kansas
BELDEN, ELIZABETH ANN
Beloit, Kansas
BERLAND, PATRICIA M.
Palco, Kansas
BOOK, GAILARD P.
Beloit, Kansas

AUSTIN, RICHARD LOREN
Collyer, Kansas
AUSTON, JOAN BETH
Alexander, Kansas
BOXBERGER, DONNA KAY
Wakeeney, Kansas
BOTT, DONALD
McCracken, Kansas
BRANDENBURG, WILMA ILENE
Wakeeney, Kansas

BAIRD, ROBERTA MAE
Bunker Hill, Kansas
BARTON, DEAN
Wallace, Kansas
BREATHOUWER, PATSY JO
Prairie View, Kansas
BRENNAN, LAWRENCE JOSEPH
Kansas City, Kansas
BRIAN, ROY V.
Brewster, Kansas





BROTEMARKLE, DORIS LOUISE
Plainville, Kansas

BROWN, BARBARA
Great Bend, Kansas

BROWNE, JAMES EDWARD
Burdett, Kansas

DORTLAND, ANNA
Gorham, Kansas

DOXON, WILLIAM
Formosa, Kansas



BULLOCK, ALICE VIVIAN
Hays, Kansas

BURNETT, DONALD
Hays, Kansas

BURNETT, LOUIS STEPHAN
Saint John, Kansas

DRAKE, DENNIS
Pawnee Rock, Kansas

DUFIELD, JACK
Plains, Kansas



BURRIS, PAUL D.
Junction City, Kansas

BYRD, BRYAN JAMES
Bloomington, Kansas

CALLAWAY, ALBERT
Hoisington, Kansas

EICHELBERGER, MARY
Hays, Kansas

EULERT, LEWIS
Paradise, Kansas



CARLEY, EVELYN
Hays, Kansas

CHURCH, ROBERT
Russell, Kansas

COLE, HARRY
Jetmore, Kansas

FABRIZIUS, ELLE HERMINE
Wakeeney, Kansas

FARRELL, ANNA LOUISE
Hill City, Kansas



CRISSMAN, ROBERT
Russell, Kansas

DEAN, JIMMY
Ellinwood, Kansas

DEANE, HUBERT
Hoxie, Kansas

FETROW, MINNIE GRACE
Cedar, Kansas

FIELD, MARGARET
Formosa, Kansas



DEINES, MARLENE
Wakeeney, Kansas

DEINES, MARY
Wakeeney, Kansas

DEINES, MYRON
Wakeeney, Kansas

FIREBAUGH, JAMES
Augusta, Kansas

FONDALE, JOYCE ANN
Ogallah, Kansas



DENISON, JACK
LaCrosse, Kansas

DEPPERSCHMIDT, EUGENE
Hays, Kansas

DODD, JIMMY
Esbon, Kansas

FOOS, BETTY
Healy, Kansas

FOOS, CAROL ELAINE
Bazine, Kansas





FOOS, FLOYD EUGENE

Bazine, Kansas

FORD, MARGARET

Hays, Kansas

GOAD, DOLORES IRENE

Copeland, Kansas

GOETZ, BERNARD

Victoria, Kansas

GROSE, MARVIN DUANE

Bazine, Kansas



FOSTER, CHARLENE

Tribune, Kansas

FOX, GENE

Ashland, Kansas

GUENTHER, NORMAN

Goodland, Kansas

HAAS, FRANK

Hays, Kansas

HACHMEISTER, MARVIN H.

Natoma, Kansas



FRESHOUR, MARILYN

Hays, Kansas

FROETSCHNER, DONNA JEAN

Larned, Kansas

HALL, ALBERT

Larned, Kansas

HANNA, CLYDE LAMAR

Dighton, Kansas

HANZLICK, SHIRLEY LOU

Russell, Kansas



FUNK, JERRY

Ness City, Kansas

GALES, PHYLLIS JANE

La Crosse, Kansas

HARPER, DONALDA JOAN

Healy, Kansas

HARPER, JERRY LEROY

Winona, Kansas

HARTMAN, LOREN GERALD

Otis, Kansas



GANSEL, BERT DANIEL

Hill City, Kansas

GARRISON, JAMES LEROY

Osborne, Kansas

HAWKS, DON

Alexander, Kansas

HERKER, ALVIN

Oakley, Kansas

HENRY, ROSALIE

Penokee, Kansas



GENTZLER, DONALD E.

Cimarron, Kansas

GIBSON, DONNA LEA

Rozel, Kansas

HUNSLEY, JACK

HERKLOTZ, EDWARD J.

Hays, Kansas

HILLS, PAUL

Esbon, Kansas



GIEBLER, BETTE LOUISE

Hays, Kansas

GINTHER, ALICE IRENE

Hays, Kansas

HOPKINS, RONALD

Arnold, Kansas

HUBER, ALMA

Ellis, Kansas

HUFFMAN, MARJORIE JEANETTE

Redwing, Kansas





JACOBS, DONALD
Fairport, Kansas

JETCHA, JOAN ELAINE
Timken, Kansas

JOHNSON, MARY JOAN
Gove, Kansas

LAMOREE, NORMA MAE
Russell, Kansas

LARSON, VELMA LEE
Goodland, Kansas



JOHNSON, PHYLLIS
Hays, Kansas

JOHNSON, THERON C.
Zurich, Kansas

JOHNSON, JAMES J.
Osborne, Kansas

LAUBENGAYER, VIRGINIA LEE
Hays, Kansas

LAYMAN, MARVIN IRAL
Meade, Kansas



JONES, FAYE
McPherson, Kansas

KAPS, DONALD WILLIAM
Bunker Hill, Kansas

KEENER, MERILYN JO
Norton, Kansas

LEGLEITER, MARIETTA RITA
LaCrosse, Kansas

LEIKAM, NORMAN
Hays, Kansas



KENNARD, ROBERT LEE
Chase, Kansas

KENNEDY, PETER
Waldo, Kansas

KESSLER, MARILYN JANICE
Russell, Kansas

LEITNER, DARLENE
Kensington, Kansas

LEWIS, CARL DEAN
Esbon, Kansas



KILBRIDGE, MARGARET MARY
Washington 7, D. C.

KLAURENS, ALICE MARIE
Menlo, Kansas

KOHL, HUGO A.
Ness City, Kansas

LINDNER, HERBERT GREIG
Hays, Kansas

LOGSDON, BETTIE
Hays, Kansas



KRAUS, HAROLD GEORGE
Hays, Kansas

KRIBBE, KENNETH
Randall, Kansas

KRUEYER, ROY RAND
Natoma, Kansas

MARESCH, MARVIN E.
LaCrosse, Kansas

MARLOW, LETA ROSE
Atwood, Kansas



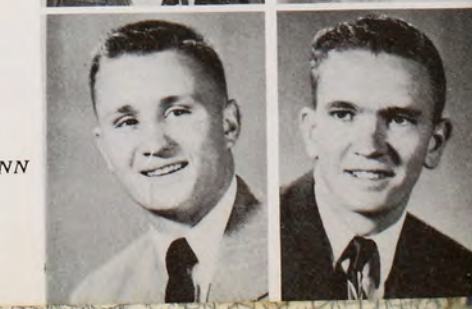
KYSAR, DOROTHY ARLENE
Quinter, Kansas

LAIZURE, BETTE JUNE
Hays, Kansas

LAKE, LEO RAY
Esbon, Kansas

MARSH, RICHARD LEWELLYNN
Syracuse, Kansas

MAUNE, MARVIN DUANE
Syracuse, Kansas





MAXWELL, ROBERT LYNN
Hays, Kansas
McBRIDE, CORNELIA JOYCE
Seward, Kansas

MERKEL, CECIL E. JR.
Garfield, Kansas
MERKLE, F. D.
Meade, Kansas
MEYER, EDNA DORIS
Almena, Kansas



McCARTY, GERALD KENNETH
Lewis, Kansas
McCONCHIE, DELMA L.
Plainville, Kansas

MILLER, DON F.
Fowler, Kansas
MILLS, DIORA FERNE
Nekoma, Kansas
MORROW, AUDREY
Garfield, Kansas



McCORMICK, MARJORIE LUANN
Menlo, Kansas
McCOY, MARIAN GRACE
Copeland, Kansas

MOSER, JIMMY
Codell, Kansas
MUNSELL, NORMA
Hays, Kansas
MURPHY, PATRICIA
Rozel, Kansas



McDOUGAL, LYNN RONALD
Atwood, Kansas
McFARLAND, BENJAMIN H.
Hays, Kansas
NAGEL, MARVEL MARIE
Alton, Kansas
NELSON, BONNIE LOU
Vesper, Kansas
NEWMAN, RICHARD ERNEST
Russell, Kansas



McGINNIS, DON EUGENE
Esbon, Kansas
McKINLEY, VIRGINIA ALICE
Medicine Lodge, Kansas
OHLEMEIER, EUGENE
LaCrosse, Kansas
PALECEK, EVELYN
Munden, Kansas
PARK, DALE
Hays, Kansas



McKINLEY, VIRGINIA NAN
Mullinville, Kansas
McKISSICK, PATRICIA ANN
Zeigler, Ill.
PARSLEY, STANLEY
Syracuse, Kansas
PATTON, ZANE
Densmore, Kansas
PESCHKA, GERTRUDE
Hoisington, Kansas



MEGAFFIN, SCOTT NORWOOD
Cawker City, Kansas
MERKEL, EARL DEAN
Garfield, Kansas
PETERS, EDITH
Kinsley, Kansas
PETTY, NORMAN
Hays, Kansas
POWERS, PATRICK
Great Bend, Kansas





PURVIS, IRIS
Bird City, Kansas
RANDEL, AUDREY
Jetmore, Kansas
REID, RUTH
Oakley, Kansas

SHELTON, TOMMY JOE
Stafford, Kansas
SIEMSON, GERALD H.
Holyrood, Kansas



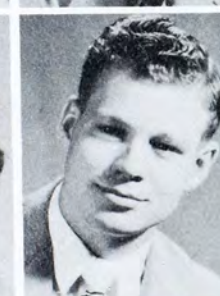
RICHARDS, MARY
Russell, Kansas
RICHARDSON, CLEO
Sharon Springs, Kansas
RIEDEL, EDNA
Wakeeney, Kansas

SLANSKY, VIOLET MARIE
Plainville, Kansas
SMITH, ALEXINE M.
Densmore, Kansas



RIEDEL, NORMA
Walker, Kansas
ROTH, JOHNNY
Pfeiter, Kansas
SANDERS, RALPH FRANCIS
Pfeiter, Kansas

SMITH, ROBERT D.
Russell, Kansas
SMITH, WILDA MAXINE
Gove, Kansas



SANGSTER, MARY LOU
Protection, Kansas
SAYLOR, BOB LEE
Osborne, Kansas
SCHABEN, DONNA LEE
Bazine, Kansas

SOMERS, JOYCE
Dodge City, Kansas
STAAB, FRANCIS E.
Catherine, Kansas



SCHAFER, GERALDINE T.
LaCrosse, Kansas
SCHAFER, SYLVIA ANN
LaCrosse, Kansas
SCHLEGEL, NORMA JEAN
Otis, Kansas

STANDISH, MILES
Almena, Kansas
STANSBURY, BEVERLY
Formosa, Kansas



SCHMIDT, GERALD
Syracuse, Kansas
SCOTT, BETTY LOU
Almena, Kansas
SEELYE, RUTHETTA MARIA
McCracken, Kansas

STINCHCOMB, ORVAL
Syracuse, Kansas
STONE, KATHRYN
Albert, Kansas



SELLENS, DONITA MAE
Russell, Kansas
SELLERS, DOUGLAS EDWIN
Wakeeney, Kansas
SHAW, MARLENE ELAINE
Wakeeney, Kansas

STONES, HAROLD
Red Cloud, Nebraska
ST. LAWRENCE, JAMES
Fowler, Kansas





SUITER, PHYLLIS
Macksville, Kansas



TUTTLE, VIVIAN
Kalvesta, Kansas



UHRICH, LAURA
Oakley, Kansas



VAN BRIMMER, JANET
Hoisington, Kansas



SULLIVAN, JOHN
Edmond, Kansas



SUTTON, DOLORES
Oakley, Kansas



VAN LOENEN, GENEVA
Phillipsburg, Kansas



VAN LOENEN, JAMES
Prairie View, Kansas



VAN SCYOC, FRANCES
Osborne, Kansas



TERRIL, MAX
Burr Oak, Kansas



TERRY, DAISY
Russell, Kansas



VON, SCHRILTZ
Healy, Kansas



WAHLMEIER, ROBERT
Jennings, Kansas



WALDEN, JOAN
Hoxie, Kansas



THOMAN, LEE ANN
Russell, Kansas



THOMPSON, FRANK
Alexander, Kansas



WALDMAN, PIUS
Park, Kansas



WALKER, BETTY
Cimarron, Kansas



WALKER, RICHARD
Fowler, Kansas



THOMPSON, DEAN
Oakley, Kansas



TILLETT, MORRIS
Ulysses, Kansas



WALTERS, GEORGE
Russell, Kansas



WARREN, WENDELL
Hugoton, Kansas



WELCH, JOYCE
Hays, Kansas



TIMMONS, SHIRLEY
Logan, Utah



TIPP, LOUIS
Portis, Kansas



WELLING, DONALD
Paradise, Kansas



WELSCH, RHODA
Trousdale, Kansas



WEST, RALPH
Larned, Kansas



TOMPKINS, DONALD
Byers, Kansas



TRAUER, LLOYD
Hanston, Kansas



WHITAKER, WILMA
Medicine Lodge, Kansas



WHITE, FRANK
Shallow Water, Kansas



WHITE, WILMA
Natoma, Kansas



WILKENS, MARY ANN
Lorraine, Kansas
WILKERSON, ALLEN DEAN
Luray, Kansas
WILKERSON, JOAN MARIE
Russell, Kansas

WRIGHT, PATRICIA LOIS
Hays, Kansas
WOSTENBURG, BETTY
Wallace, Kansas

WILLIAMS, MARY JANE
Plainville, Kansas
WILSON, MARILYN MARIE
LaCrosse, Kansas
WOOD, WILMA JEAN
Trousdale, Kansas

YEAGY, MARY L.
Plainville, Kansas
YOUNG, NORMA RAE
LaCrosse, Kansas



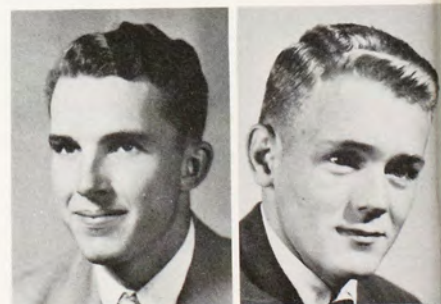
SPECIAL STUDENTS



ESPINOAS, ENRIQUE
Mexico
LONG, ALICE LOUISE
Quinter, Kansas

ADDISON, NELLIE IRENE
Hays, Kansas
McCAMPBELL, JAMES WALTER
Fowler, Kansas

MRAVINIC, LARRY
Paradise, Kansas
PFIEFER, CALLISTUS
Hays, Kansas



Special Students Not Pictured

DENTON, HOPE
Hays, Kansas
DREILING, LUCY
Hays, Kansas
JONES, RICHARD KIETH
Bird City, Kansas
JUERGENSEN, R. LOUISE
Hays, Kansas
KRUEYER, THOMAS HENREY
Natoma, Kansas
LONG, MARGUERITE IRENE
Quinter, Kansas
MANN, MARLIS ECKLES
Hays, Kansas
McKEE, IRMIDA AILEEN
Hays, Kansas
McNUTT, WALTER ADRIAN
Hays, Kansas

MILLER, JAY JOSEPH
Delbab, Kansas
NELSON, JOHN KING
Hays, Kansas
PEIRANO, ELEANOR
Hays, Kansas
PREISS, JOYCE
Stafford, Kansas
SEARCH, MRS. A. LOUISE
Hays, Kansas
SHORT, EDITH ORVELLA
Hays, Kansas
WINTER, CHARLES L.
Hays, Kansas
ZAHRT, GENEVIEVE ROSALIE
Hays, Kansas



BOWMAN, HARLAND
Quinter, Kansas
Education

BREJCHA, HAROLD
Gaylord, Kansas
Chemistry

CHENG SHAN, LIN
China
Botany

COBB, PAUL
Hays, Kansas
Education

CROWN, WINTON
Agra, Kansas
History

DREES, LINUS
Hays, Kansas
Physics

FERGUSON, DONALD
Menlo, Kansas
Education

FORSYTH, CHARLES
Medicine Lodge, Kansas
History

GRADUATE STUDENTS

McARTHUR, BILL
Hays, Kansas
Education

NEYER, ISABELLE
Hanston, Kansas
History

NEYER, JOHN
Hanston, Kansas
History

TOMBAUGH, ETHEL
Burdett, Kansas

TOMBAUGH, ROBERT
Burdett, Kansas
Chemistry

VINE, WANDA LEE
Zurich, Kansas
Education

WERTH, EDWIN
Schoenchen, Kansas
Commerce

WOLFE, CHARLES
Bazine, Kansas
Education



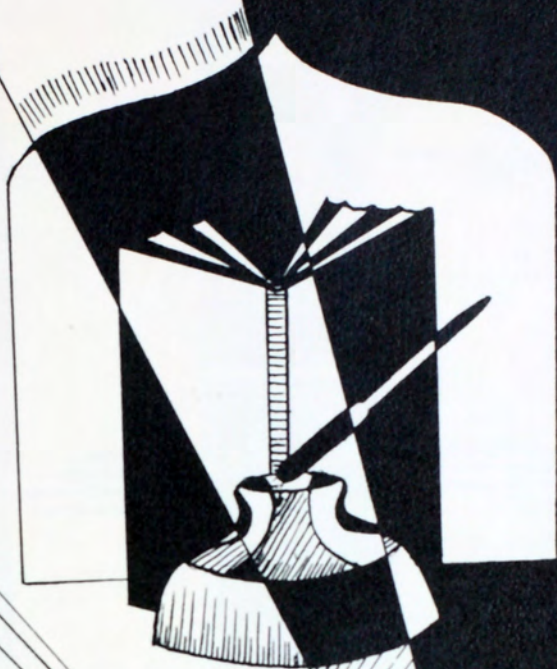


Drew Pearson greets the nation from our campus . . .



. . . and tells "Prexy" all about our foreign policy.

FACULTY



FACULTY



AGNEW, ELIZABETH
Dean Emeritus of
Women



BROOKS, D. K.
Assistant Professor of
Mathematics
and Physics



DAVIS, GAYNELLE
Associate Professor of
Education
Director of Elementary
Education



FRANCIS, ALEX
Assistant Professor of
Physical Education
Head Track Coach



ALMQUIST, E. C.
Assistant Professor
in Photography



CHOGUILL,
DR. HAROLD
Professor of Chemistry
Head of Department



DOBOSH, DREW
Assistant Professor of
Art



GARNER, NAOMI
Assistant Professor of
English



ANSELM,
COURTENAY
Instructor in Chemistry



CODER,
DR. RALPH V.
Professor of English
Head of Department
Chairman of Languages
and Literature



DOMINY, THAMA
Instructor in Home
Economics



GOLDEN, EMMA
Associate Professor of
Language



ATWOOD,
BENJAMIN
Instructor in Economics
and Business
Administration



COOK, KENNETH
Instructor in Business
Administration



EASTMAN, WILLIAM
Instructor in Biology



GORHAM, MAUDE
Assistant Professor of
Psychology



BEESELY, ALICE
Professor of Home
Economics
Head of Department



COULSON, MARION
Assistant Professor of
English



ETTER, EUGENE
Assistant Professor of
Mathematics



GROSS, PAUL B.
Associate Professor of
Physical Education
Director of Athletics



BOGART,
KATHERINE
Assistant Professor of
English



DAVIS, EDWIN
Professor of Industrial
Arts
Head of Department



FELTEN, LUCILLE
Assistant Professor of
Music



HAMILTON,
DR. SAMUEL
Head of Philosophy
Department

ESTHER
Instructor in
Music



JUERGENS, JACK
Instructor in Music



MARSHALL, E. L.
Assistant Professor of
Mathematics



NEWBECKER, ILLA
Instructor in Home
Economics



E. LELAND
Instructor in
Journalism



JOHNSON, HARLAN
Instructor in Chemistry



MARTIN, EDWIN
Instructor in Zoology



ONION, CHARLES C.
Instructor in History



ER, DR. LEON
Associate Professor of
Zoology



KETCHUM, HARRIET
Instructor in Speech



McCARROLL,
ROSELLA
Assistant Professor of
Education



PALMER, HAROLD
Assistant Professor of
Music



ERNDON,
GENEVA
Instructor in Speech



KUHN, JEANNE
Instructor in Education



McFARLAND, HENRY
Assistant Professor of
Biology



PARISH, VERNA
Assistant Professor of
English



INS, HAROLD
Assistant Professor of
Botany



LACEY, MABEL
Assistant Professor of
English



McGRATH,
DR. ROBERT T.
Professor of Education



PERKINS, MARIA
Assistant Professor of
Sociology



FFMAN, RALPH
Assistant Professor of
Physical Education,
Coach of Football



LANDRUM, NITA
Supervisor of
Correspondence Study
Executive Secretary
Alumni Association



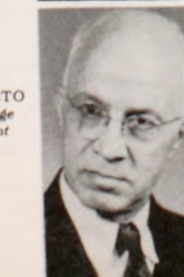
MORRISON, ALICE
Assistant Professor of
English



PERRY,
MARY AILEEN
Instructor in Music



OBINI, MODESTO
Professor of Language
Head of Department



LIN, PHILLIP
Instructor in
Sociology and
Political Science



MOSS, JOEL
Assistant Professor of
Art



RANKIN, DR. ROY
Professor of Chemistry





RAYBURN, WILBUR
Instructor in Industrial Arts



SCOTT, DR. IRA
Associate Professor of Education



SURAN, CADE
*Instructor in Physical Education
Head Coach of Basketball*



WALLERSTEDT, WALTER
*Instructor in Printing
Head of Printing Department*



REED, DR. H. B.
*Professor of Psychology
Head of Department*



SPOMER, E. J.
Associate Professor of Economics and Business Administration



SYVERSON, WILLIS
Assistant Instructor in Industrial Arts



WELLS, JAMES R.
*Instructor in Agriculture
Assistant Farm Supervisor*



REYNOLDS, LEO B.
Associate Professor of Music



START, JAMES R.
*Professor of Speech
Head of Department*



THOMAS, DOLLIE
Instructor in Business Administration



WELLS, T. W.
Assistant Professor of English



RIEGEL, ANDREW
Assistant Professor of Botany



STOPHER, EMMET C.
Professor of Mathematics and Head of Department



THOMPSON, DR. L. W.
Professor of Economics and Business Administration and Head of Department



WELTY, DR. RAYMOND
*Professor of History
Head of Department*



ROGERS, JACK
Instructor in Political Science



STOUT, ROBERTA
Assistant Professor of English



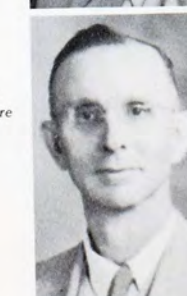
TOALSON, WILMONT
Assistant Professor of Mathematics



WILKINS, WILLIAM
Instructor in Music



ROUSE, JAMES E.
Professor of Agriculture



STREETER, DR. F. B.
*Librarian
Professor of Library Science*



UNRUH, FRED
Instructor in History



WOOD, W. CLEMENT
Professor of Education and Head of Department



SCHMUTZ, LESTER J.
*Associate Professor of Agriculture
Farm Supervisor*



STUPPY, ELINOR
Assistant Instructor of Women's Physical Education



VANDIVER, MABEL
*Professor of Art
Head of Department*



WOOSTER, DR. L. D.
*President Emeritus
Professor of Geology*



ZAHRT, MERTON S.
Professor of Music
Head of Department



ZINSZER,
DR. HARVEY
Professor of Physics and
Astronomy
Head of Department

ADMINISTRATIVE AND SUPERVISORY ASSISTANTS



CARLSON, VERNON
Head Janitor

STERNBERG,
GEORGE
Curator of Museums



MICHENER, DR. R. B.
College Physician

TORREY, INEZ
School Nurse



FACULTY NOT PICTURED

BARBOUR,
ELIZABETH
Assistant Professor of
Women's Physical
Education

FRANCIS, HELEN
Assistant Professor of
Journalism

BERGLAND,
MAURINE
Instructor of Women's
Physical Education

MARPLE, ROBERT
Instructor of History

MCDONALD,
MARION G.
Instructor in
Physical Education

BROOKS, C. H.
Assistant Professor
Emeritus of Languages;
Extension

McMINDES, MAUDE
Director Secondary
Education

BROOKS, R. U.
Assistant Professor of
Industrial Arts,
Superintendent

POLEN, WILLIAM A.
Instructor in Economics
and Business
Administration

COLYER, E. E.
Professor Emeritus of
Mathematics

STROUP, ROBERT H.
Instructor in Economics
and Business
Administration

McGIMSEY,
MARGARET
Assistant Librarian
(Orders)



URBAN, ED
Assistant College
Printer



McILRATH, HELEN
Assistant Librarian
(Reference)



VAN ACKEREN,
MARGARET
Assistant Librarian
(Documents)



SUPERVISORS NOT PICTURED

ARTMAN, ETHEL
Assistant Director of
Extension

McKENNA, ETHEL
Dormitory
Director, Retired

BIBENS, CORA
Secretary of President

MOSIER, ELIZABETH
Secretary,
Registrar's Office

BODNER, FLORENCE
Secretary to Dean

ROCKWELL,
MRS. J. H.
Housemother,
Custer Hall

HOPKINS, MABEL
Assistant to
the Registrar

STEWART, GLADYS
Housemother,
Custer Hall

LINDNER, PAULINE
Assistant Librarian

WOOSTER, VELMA
Speech Correction
Clinic

McINTOSH, NINA
Assistant Librarian



WALLERSTEDT,
MOLLIE
Student Center



MILLER,
MRS. ETTA M.
Housemother,
Residence Hall

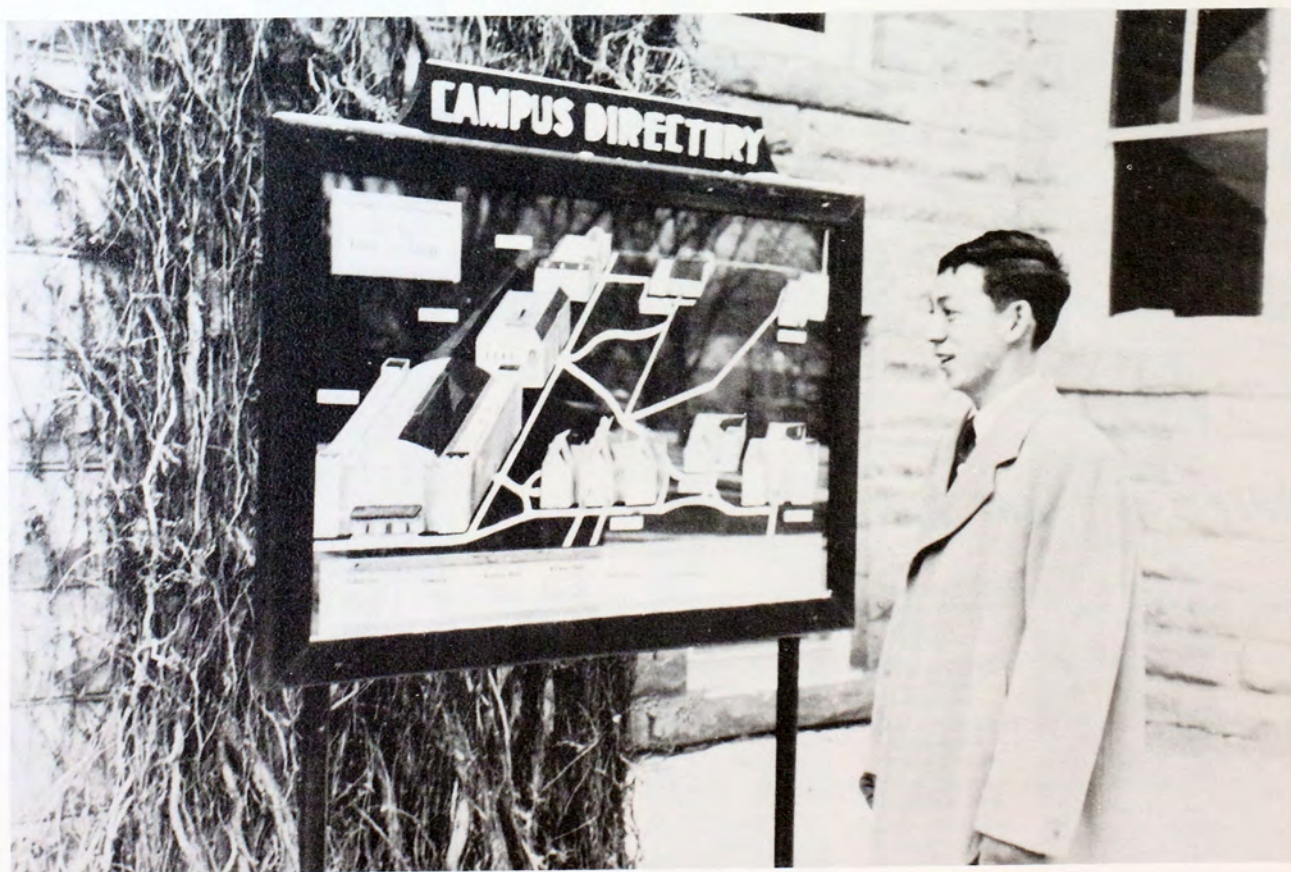


LANDRUM,
MRS. NITA
Alumni Bureau





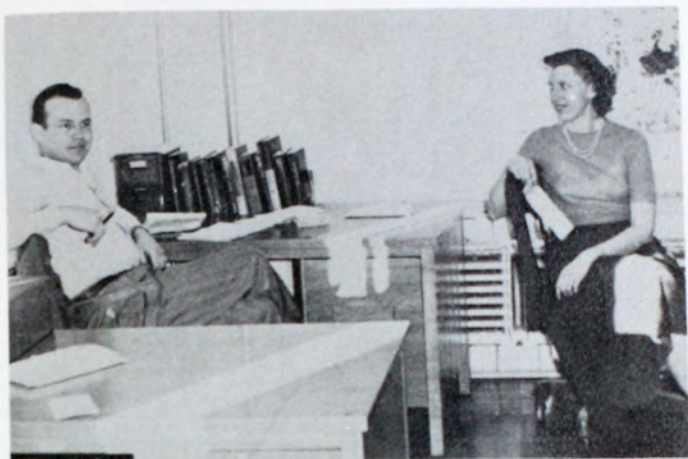
*Nature . . .
clothed in her
own beauty . . .*



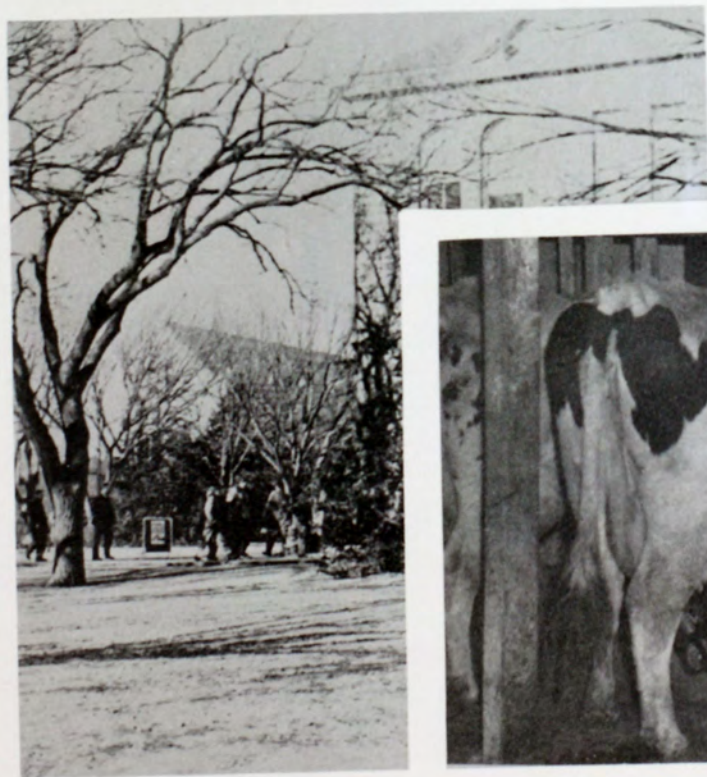
Alex . . . our cheerleader from Hawaii.



Stop eavesdropping, Bob!



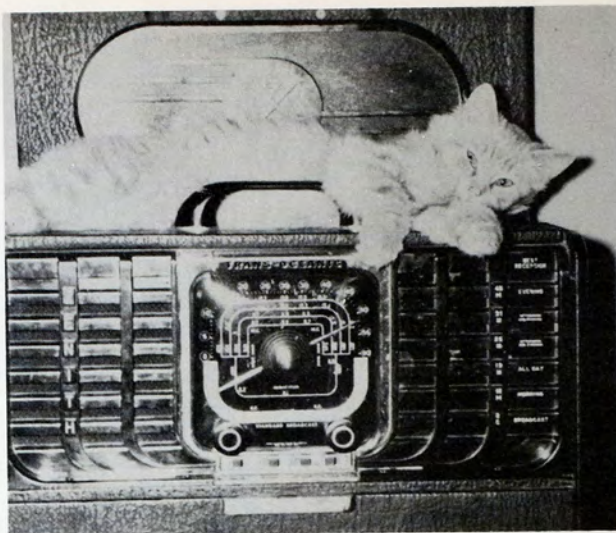
Oh! For the life of an extension worker . . .



Carnation's contented cows have nothing on us . . . !



"Now, this is the way I look at it . . ."



Everybody wants to get into the act . . . !!!



"Campus Scenario"



"Chow Hall"



Library



Picken Hall



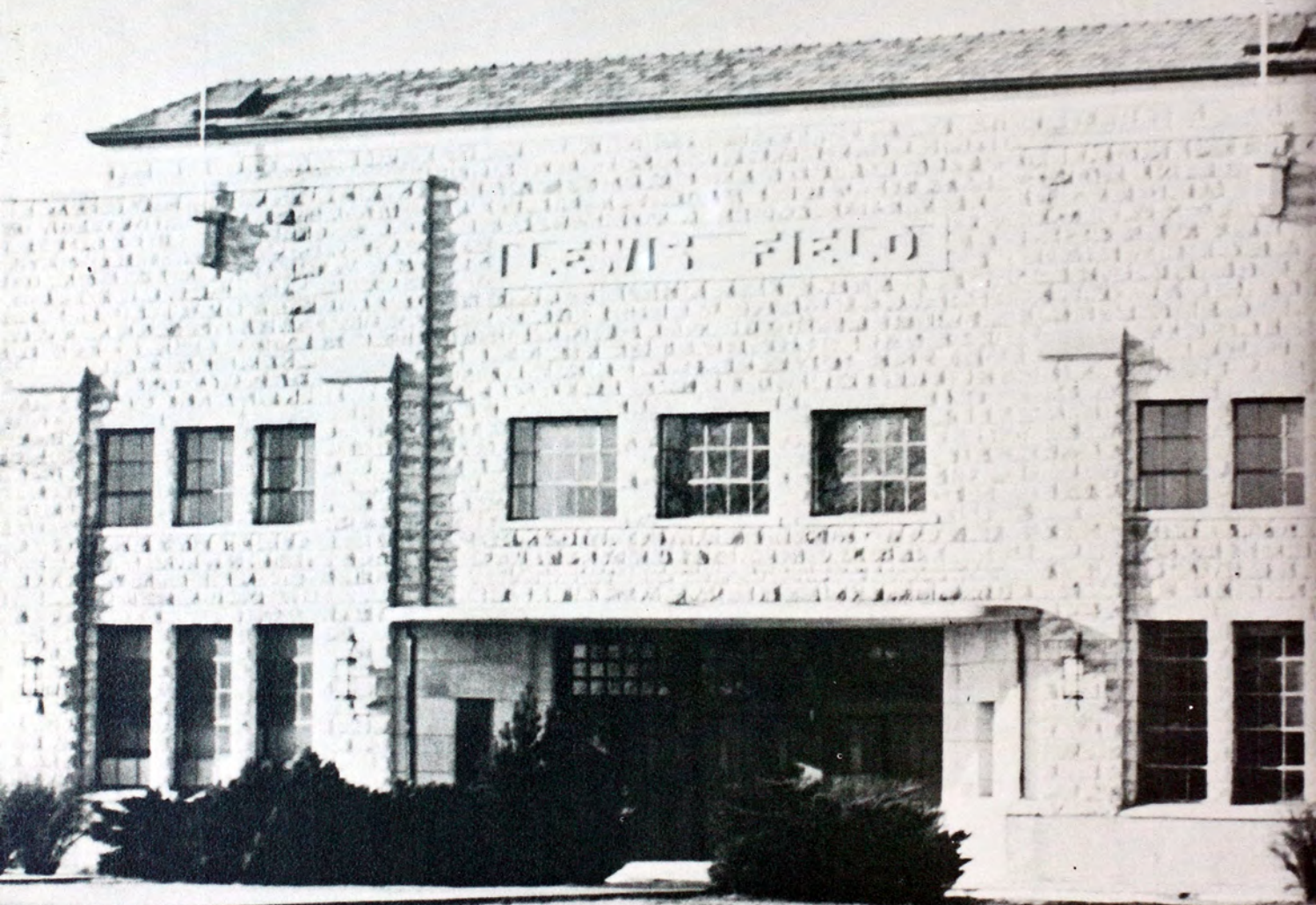
Sheridan Coliseum



Industrial Building



Science Building



Lewis Field Stadium

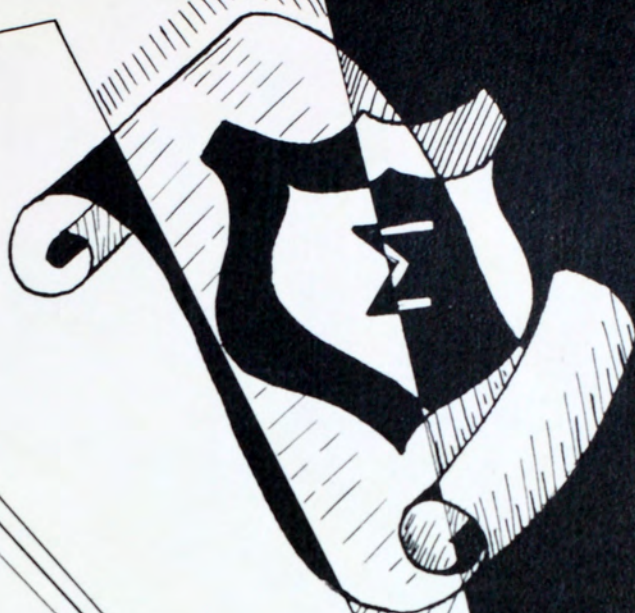


Cody Commons



Social Building

GRIZZLY K





Alpha Sigma Alpha

Back Row: Marian McCoy, Ruth Ann Biehler, Margaret Jacobini, Verna Lou Jacobs, Norma Arnold, Barbara Hale, Frances Van Scyoc.

2nd Row: Alice Worley, Mary Lee James, Martha Lou Morlan, Patsy Earl, Ruby Snively.

1st Row: Mary Jane Williams, Phyllis Garman, Shirley Hanzlick, Valda Robinson.

Not Pictured: Shirley Tharp, Beverly Stansbury.

Sponsor: Miss Parish.



MARTHA LOU MORLAN
President

OFFICERS

President.....Martha Lou Morlan
Vice-President.....Ruby Snively

Secretary.....Shirley Tharp
Treasurer.....Verna Lou Jacobs



Delta Sigma Epsilon

Back row: Mary Alice Brown, Faye Jones, Margaret Field, Nelva Lee Giles, D'Nelle Ehrlich, Shirley Wilson, Pat Underwood, Mary Weidner, Norma Powers, Barbara Brown, Pat Berland, Virginia Richards.

Third row: Marilyn Kessler, Donita Sellens, Aileen McKee, Claire Ann Kvasnicka, Julia Harris, Jean Manning, Donna Lee Darby, Carol Munson.

Second row: Delores Ingram, Marjorie Lebsack, Elizabeth Beldon, Miss Newbecker, sponsor; Norma Lamoree, Joan Wilkerson, Lois Welch, Donna Sidebottom.

First row: Edith Peters, Anna Farrell, Mary Myers, Doris Binder, Wilma Horner.

Not pictured: Farita Fowler.



MARJORIE LEBSACK
President

OFFICERS

President MARJORIE LEBSACK

Secretary LOIS WELCH

Vice-President NORMA POWERS

Treasurer SHIRLEY WILSON



Sigma Sigma Sigma

Back row: Miss Beesley, sponsor; Marilyn Wilson, Betty Lou Walker, Pat Murphy, Lea Anne Toman, Mary Ann Deines, Marlene Deines, Joyce Welch, Joan Jecha, Marlene Shaw.

Second row: Norma Jean Schlegel, Pauline Warren, Jean Barry, Bonnie Bisel, Harriett Klenk, Margaret Earnest, Dorothy Unrein, Mary Adams.

First row: Elaine Johnson, Pat O'Toole, Margaret Jellison, Jane Ruth, Carlene Duncker, Shirley Britt, Delores Fitzgerald.

Not pictured: Barbara McCormick.



JANE RUTH
President

OFFICERS

<i>President</i>	JANE RUTH	<i>Secretary</i> BARBARA McCORMICK
<i>Vice-President</i>	SHIRLEY BRITT	<i>Treasurer</i>CARLENE DUNCKER



Theta Sigma Upsilon

Back row: Mary Hooker, Vesta DeBoer, Phyliss Gales, Ramona Funk, Melba Sarver, Doris Beery.

Second row: Mrs. Corder, sponsor; Shirley King, Luanne Lebsack, Alyce Barstow, Charmaine Deutcher, Elaine Hamburg, Miss Davidson, Housemother.

First row: Verna Hanson, Marilyn Freshour, Margaret Ford, Dorothy Luce, Virginia Laubengayer.



SHIRLEY KING
President

OFFICERS

President SHIRLEY KING

Secretary CHARMINE DEUTCHER

Treasurer ELAINE HAMBURG



Kappa Sigma Kappa

Back row: Bob McPherson, Stanley Moore, Curtis Erickson, Harland Hoffman, Paul Ruggles, H. A. Kohl, Fred Pohlman, Dorth Hibbs, Henry Pohlman, Kenneth Odom, George Cramer, John Dougherty.

Third row: Walter Wallerstedt, sponsor; Paul Burris, Ted Roberts, John Tomlinson, Ray Johnson, Jerry Funk, George Petrasek, Virgil Evans, Dean Nolte, Lew Costello, John Smith.

Second row: Carol Dee Grimes, Frank White, Bob Christensen, Norman Baldwin, Jim Johnson, Paul Miller, Philip Morgan, LaVon Scheuerman.

First row: Jim Paxson, John Mullender, Eugene Ohlemeier, Richard Stevenson, Clyde Phillips, Bill Pike, Eugene Bird.

Not pictured: Gayle Combest, Russell Duer, Robert Foss.



BOB CHRISTENSEN
President

OFFICERS

President.....BOB CHRISTENSEN
Vice-President CURTIS ERICKSON

Secretary.....HENRY POHLMAN
Treasurer.....HARLAND HOFFMAN



Phi Sigma Epsilon

Back row: Dale Schieb, Samuel Moore, Merlin Corwin, Kenneth Dellett, Jack Horner, John Murphy, Gayle Krause, Robert Clark, Robert Haney, Gene Hess, Richard Barrett, Eldon Matal, James Farley, Donald Hertel.

Third row: David King, Robert Mlyner, Dale Younkin, Leon Roberts, Rex Marxmiller, Charles Stuppy, Joseph Hubbard, Gail Lupton, Fred Unruh, sponsor; Robert Shields, Rupert Knowles, Douglas Boston, Leo Meyers, John Carmody, Clarence McDaniels, Earl Hobbs, Robert Mahoney, Frank Gilman.

Second row: Roland Schlegel, Bill Jellison, Roger Brown, Lionel Howell, Sidney Shields, Wilbur Schraeder, Francis Droegemeier, Paul Ehling, Jack Finney, Herschel Betts, Billy Campbell, Donald Crippen, Robert Malone.

Front row: Clovis Emrich, Vaughn Wells, Donald Fowler, Marvin Meade, Jimmy Moore, Roy Barber, John Gibbs, Elman Schlegel, George Dennison, Eldon Thornburg, Donald Harsh.



ROLAND SCHLEGEL
President

OFFICERS

President.....ROLAND SCHLEGEL
Vice-President.....FRANK GILMAN

Secretary.....ROBERT HANEY
Treasurer.....BILL JELLISON



Sigma Tau Gamma

Back row: Donald Baker, Jack Dufield, Frank Ginther, Dennis Drake, Joe Hickel, Milton Gill, Robert Engel, Robert Giebler, Edward Herklotz, Leon Morlan.

Third row: Norvin Snook, Orval Stinchcomb, Raymond Berland, Paul Clark, Gregory Wasinger, Harold Augustine, Robert Earnest, Wendell Allen, Robert Riggs, Gilbert Leitz, Terry Keeley, Normand Pratt, Donald Jacobs, Dean Thompson, Leo Leitz, Jack Ulery, David Jensen.

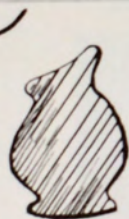


NORVIN SNOOK
President

Second row: James St. Lawrence, Robert Thompson, Cecil Calvert, Robert Hooker, Kenneth Schwertfeger, Ralph Shrauner, Quentin Bogart, Robert Blum, Robert Blazer, Clarence Walters, Thomas Byerley, Scott, Macgaffin.

First row: Thomas Gottschalk, Lawrence Brennen, Nathan Linenberger, Jack Dennon, Robert Berland, Don Foster, Walter Androes, Ralph Engel, Dorrell George, Robert Hawes, George Gottschalk, Bernard Wasinger, Rex Curtis.

Sponsor: Donald Ferguson.



Tau Kappa Epsilon

Back row: Richard Lappin, Herb Kuhn, Dale Hearon, Richard Morrison, Russell Pennington, Keith Fitzgerald, Morris Tillett, Ferdinand Burmeister, Harold Krause.

Third row: Francis Mahoney, James Moore, San Gorham, George Walters, Laverne Davis, Richard Pebbles, James Ahrens, Allen Trexler, Bert Blank.

Second row: Myron Deines, Pat Powers, Bill Dougherty, Wilford Hooper, Loren Schmidtberger, Bob Wagner, Warren Conner, Richard McCall, Orville Wahl, Duane Faulk.

First row: Bob Tombaugh, Charley Pywell, Jim Duncan, Robert Gorham, Vernon Bell, Myron McKinley, Warren Teasley, Merrill Durr, Robert McClellan, Gerald Siemson, Bill Bolan.



WILLIAM BOLAN
President

OFFICERS

President
Vice-President
Secretary-Treasurer

WILLIAM BOLAN
LAVERNE DAVIS
CLIFTON TILLET

SPONSORS

Dr. McGrath
Dr. Scott

Dr. Riegel
Mr. Onion



Pan Hellenic Council



PAT O'TOOLE
President

The Panhellenic Council has as its chief concern those problems and difficulties arising in the various affairs and activities of the social sororities. Not only is there an interest in social affairs, but due emphasis is placed on scholarship through the awarding of the scholarship shield every semester.

Membership in the group is filled by two members

from each sorority and offices are held on a rotational basis. Patricia O'Toole, Sigma Sigma Sigma, served as president this year.

Miss Gaynell Davis, sponsor of the Panhellenic Council, Miss Wilma Wolf and Miss Jeanne Kuhn served as the Preferential Bidding Committee.



Inter Fraternity Council



HENRY POHLMAN
President

To the Interfraternal Council are brought those questions arising among fraternities and from it come decisions which make for better cooperation.

With the Panhellenic Council, the Interfraternal Council sponsored the All-Greek formal held in October and made the plans for the Greek Conclave to

be held in the summer. Rush week and its many smokers are also a responsibility of the group.

Two members from each fraternity make up the group. Henry Pohlman, Kappa Sigma Kappa, held the office of president and Dr. R. V. Coder sponsored the organization.

Tau Kappa Epsilon
House



Sigma Theta Upsilon
House



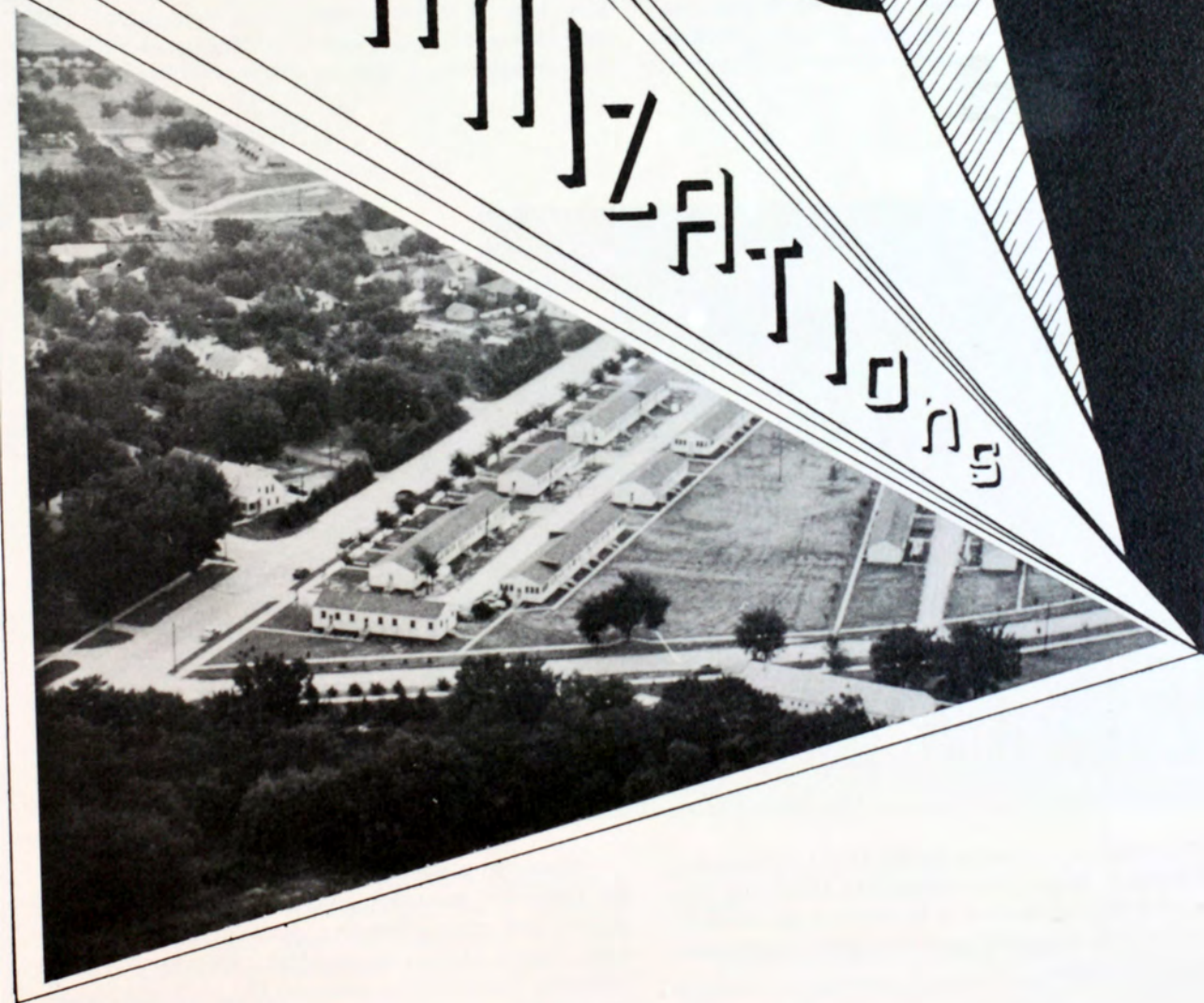
Phi Sigma Epsilon
House



Kappa Sigma Kappa
House



საქართველოს საზღვრო დაცვის სამსახური





Delta Epsilon

EVERETT MARSHALL
President

Delta Epsilon, national honorary science fraternity, is composed of members of the faculty and scholastically high senior majors. Their aim is to stimulate interest and achievement in scientific study and research. During meetings graduate students and faculty discuss different papers of any of the sciences.

Officers for the year 1949-1950 were Everett L. Marshall, president; Wilmont Toalson, vice-president; Dr. Harvey A. Zinszer, secretary-treasurer; Dr. Harold Chogiull, first senator; Edward C. Almquist, second senator.



Sigma Pi Sigma

HAROLD BREJCHA
President

Physicists of tomorrow on the Fort Hays campus form Sigma Pi Sigma, national physics fraternity. The purpose of the organization is to advance the study of physics and to recognize high scholastic accomplishments in that field.

Under the leadership of Harold Brejcha, president, the fraternity presented programs of new phases of physics and other interesting material. Other officers were: Merrill Durr, vice-president; Wilmont Toalson, treasurer; Leland Page, treasurer; Dr. Harvey A. Zinszer is faculty sponsor.



THEARON MOSER
President

Kappa Pi



"As the sunshine colors flowers so art colors life."

Thus the motto of the Fort Hays chapter of Kappa Pi, national art fraternity, colors the lives of its members. The purpose of the organization is to create and extend an active interest in art. Kappa Pi sponsors exhibits from outside as well as those works done here on

the Fort Hays campus.

Thearon Moser served as president during the year; Roy Duell, vice-president; Bob Mapes, secretary-treasurer; Martha Morlan, social chairman; John Thorns, Jr., program chairman.



MARVIN MEADE
President

Pi Gamma Mu



Pi Gamma Mu, national honorary social science fraternity, endeavors to interest students in the social sciences. At meetings, panel discussions have been held to discuss current problems and advancements in that field. Members are selected by faculty of the organization and qualifications are based upon scholarships in

the social science field. They are initiated at the spring banquet.

During the first semester, Marvin Meade served as president; Leo Van Scyoc acted as president second semester. Fred Unruh was secretary-treasurer.



LARRY HULL
President

Phi Mu Alpha

Bringing music to the ears of their fellow students is the aim of the Phi Mu Alpha, national honorary music fraternity. The Phi Mu Alphas have again become an active organization on the campus. In the spring, a concert was presented by the activities under the direction of their sponsor, Harold Palmer.

Larry Hull was president first semester. Second semester officers were: William Orth, president; Sigmund Leiker, Jr., vice-president; Bruce Tribble, secretary; John Stadlerman, treasurer; John C. Thorns, Jr., historian; Jim Maxwell, sergeant-at-arms; Jack Jeurgens, pledge master.



CHARLENE
AUSTON DILSAVER
President

Sigma Alpha Iota

Taking the lead in promoting music activities on the campus this year was Sigma Alpha Iota, national music fraternity. Through the capable leadership of Charlene Auston Dilsaver, the girls were able to provide a definite place for music in programs for the student body. This includes recitals given by music

majors, as well as all programs which had as a part of them music of any type.

The other officers for the year were Marvel Hull, vice-president; Madeline Maxwell, secretary; Eleanor Rockwell, treasurer; Miss Lucille Felten served as sponsor.



RICHARD BURNETT
President



Seventh Cavalry

Composed of many of the outstanding young men leaders on the Fort Hays campus, the aims of the Seventh Cavalry are to promote and to create leadership, to stimulate a desire to render service, and to aid and promote the general leadership activities of the school. One of the most worthwhile projects of the organization is the composing and selling of a student directory to

provide a scholarship for some sophomore boy.

Officers for the year were: Richard Burnett, president; Leland Page, vice-president; Merril Durr, secretary-treasurer. New pledges are Eugene Bird, Quentin Bogart, Bill Campbell, Cotty Catal, Loren Schmidberger, Robert Wagner, and Vernon Bell.



HARRIET BRIN
President



Women's Leadership

Outstanding young women of the campus, chosen largely by the faculty, make up that organization known as Women's Leadership. These women have shown through their activities their leadership abilities and the ability to promote leadership principles on the

campus.

The group was capably guided by Harriet Brin, president; Bonnie Miller, vice-president; Geraldine Gale, secretary-treasurer; Mrs. Nita Landrum, Alice Morrison and Verna Parish served as sponsors.



ROBERT McCLELLAN
President

Engineers Club

Pre-engineering students at Fort Hays meet to discuss various phases of current interest in their field. They have made numerous field trips to the plastic works, the power plants and other places of interest.

Officers for the year 1949-1950 were president, Robert McClellan; vice-president, Burdan Musgrave; secretary-treasurer, Ernest Niquette. Everett Marshall is the faculty sponsor.



EDGAR DeGRAW
President

German Club

To improve German speaking by conversation, to understand and appreciate German lyric and folksong, and to foster good fellowship among the students of German are the aims of the German Club. All students who have taken five hours of German are eligible for

membership.

Edgar DeGraw served as president; Leona Wasinger, vice-president; Gilbert Dreiling, secretary; Irving Casler, treasurer. Mrs. Emma Golden is faculty sponsor.



CLAIRE KVASNICKA
President



Home Economics Club

The Home Economics Club, organized in 1925 for all majors and minors in the department, held an educational meeting and an activity meeting centered around home economics interests each month.

President of the group was Claire Ann Kvasnicka;

vice-president, Lorita Mahoney; secretary, Clariece Seachord; treasurer, Helen Haggard, publicity, Elvera Munsell; music, Jo Eva Hinkhouse; social, Shirley Britt. Ila Newbecker is sponsor and Alice Beesley is assistant sponsor.



LEO VAN SCYOC
President



International Relations Club

Not only does the International Relations Club have as its objective the non-partisan study of foreign affairs but it has initiated projects to help the members of the Club and the student body at large realize the importance of being well informed in the field of international relations.

The Club has been active in the UNESCO program and is sponsoring the organization of an independent Fort Hays State UNESCO Council. Other projects in-

clude a foreign student correspondence program and also, the club has given aid to an American International relations Club in Munich, Germany.

Officers for 1949-1950 were: Leo Van Scyoc, president; Henry R. Wagner, vice-president; Annie Rice, secretary; and Bill Pike, treasurer. Dr. Raymond L. Welty, who helped organize the Club in 1936, has sponsored the group.



GAYLE COMBEST
President

Alpha Psi Omega

To develop dramatic talent and the art of acting, to cultivate a taste for the best in the drama, and to foster the cultural values of the theatre, formulate the purpose of Lambda Xi cast of Alpha Psi Omega. Members are composed of those students on the campus doing the highest grade of dramatic work.

Gayle Combest was president during the last year; Jane Ruth, vice-president; and Mary Lou Pennington, secretary. Dr. Geneva Herndon and Miss Harriet Ketchum are sponsors of the fraternity.

Harland Hoffman was president of Little Theatre, campus dramatic organization.



PAUL COBB
President

Graduate Club

Graduates of Fort Hays who are continuing their studies meet in the form of the Graduate Club to promote interest and to discuss their work. Programs have included the discussion of the processing and topics of the various thesis being written.

Dr. Samuel Hamilton, head of the philosophy department, is in charge of the club. Paul Cobb was president; Harold Gill, vice-president; and Wanda Vines, secretary.



LELAND PAGE
President



Mathematics Club

The Mathematics Club, known as the "Magic Square" meets twice a month. The purpose of the club is to promote interest in mathematics, to work intriguing problems and to discuss the highlights of mathematics not touched in the classroom.

Dr. Emmet C. Stopher, head of the mathematics department, is the sponsor. Officers for the year were: Leland Page, president; Merrill Durr, secretary-treasurer; Alfred Birdsell, publicity.



LOREN
SCHMIDTBERGER
President



Newman Club

An organization of Catholic men and women, the Newman Club has as its purpose the encouragement of cooperative religious activities and the promotion of wholesome social life among Catholic students which has been carried out on the campus through group communions, discussions and parties. The Newman Club derives its name from John Henry Cardinal New-

man, founder of the Oxford movement.

James R. Start is the faculty sponsor of the group, and Father Robert Meis, O.F.M. Cap. is chaplain. Officers were: Loren Schmidtberger, president; Robert Giebler, vice-president; Gladys Goetz, secretary; and Kenneth Dean Dreiling, treasurer.



Orchestra

Fort Hays is fortunate to have the only symphony orchestra in the western half of Kansas.

Under the capable direction of Leo B. Reynolds, they accompany the choir at the presentation of the "Messiah" during the Christmas holidays. The orchestra, composed of community people and students, presented a spring concert also.

Band

Lending color and music to the air at Fort Hays, the band, under the direction of Harold Palmer, has entertained at pep assemblies, athletic events and various concerts.

The band made two concert tours through northwest and northeastern Kansas touching ninety schools and 1800 students during the year 1949-1950.





A Cappella Choir

Under the direction of Merton S. Zahrt, head of the music department, the a Capella Choir has entertained campus audiences with the best in unaccompanied music.

During the last year the choir assisted the community chorus in the "Messiah," presented annually at Christmas. They also helped with the Fort Hays choral clinic for music supervisors.





LEE FOX
President

Pre-Medic Club

Pre-Medic Club is an organization of students who are interested in the study of medicine, dentistry or nursing. Any student who is interested is eligible to membership. The objects of the club are: (1) To better acquaint the pre-medical student with the profession he intends to enter. (2) To encourage excellence

in premedical work by furnishing goals toward which the student may strive.

Wilford Hoofer acted as president during the year. Kenneth Dellet was vice-president and Paul Hill, secretary. Faculty sponsor was Edwin Martin.



WILFORD HOOFER
President

Quill Club

The organization, having as its members those students of the college who display outstanding literary ability, is the Quill Club. Before being accepted for membership, a student must submit a manuscript to the group for approval.

The local group is particularly fortunate in having

among its members two national officers: Dr. F. B. Streeter, Vice-High Chancellor; and Mr. Marion Coulson, High Warden of the Purse.

Officers of the local group are: Lee Fox, Chancellor; Mr. Marion Coulson, Vice Chancellor; Ann Crumley, Scribe; and Hope Townley, Warden of the Purse.



ABE MILLER
President



Residence Hall

Activity—whether it be card games, intra-murals or studying—has been the key word at Residence Hall this past year. In fact, its members have been active in almost every field on the campus.

Attempting to maintain some semblance of order

and in the process to provide also a cheerful atmosphere for the boys, has been the goal of Mrs. Etta Miller, housemother. Assisting in this job were Abe Miller, president; Donald Hoskins, vice-president; and Wayne Matheson, secretary-treasurer.



WILFORD ROBERTS
President



Lewis Field Stadium

Not to be outdone, the boys living at the Stadium have had their share of fun and serious moments this year—ranging from cramming for tests and typing term papers to the never ending ping-pong matches and bull sessions. This is college life, however, and one

may be sure that the boys at the Stadium are enjoying it in its entirety.

The group at the Stadium was very capably led this year by Wilfred Roberts, president, and Leroy Barrett, vice-president.



State College Leader

STAFF

Editor.....RICHARD McCALL

Business Manager.....LOREN SCHMIDTBERGER

Photographer.....JOHN HIBBERT

Feature Editor.....JULIA HARRIS

Society Editor.....ALICE BARSTOW

Assistant Social Editor.....ANN CRUMLY

Sports Editor.....SAM TEAFORD

Reporters—JAMES GARRISON,
EUGENE KEADY, RALPH McNEMEE,
MARLENE SHAW, RICHARD
STEPHENSON, LLOYD TRAUER,
and DONALD WELLING.

Laboratory Staff—JOYCE FONDOBLE,
LYNN McDUGAL, RALPH McNEMEE,
NORMAN PETTY and WILLIAM RUPP.

Printing Adviser.....WALTER WALLERSTEDT

Assistant Printer.....ED URBAN

Journalism Adviser.....LELAND HEINZE



To the tune of clattering typewriters, rolling presses and frantic last minute attempts of reporters to gather material the weekly publications of the Leader rolled off the press this year on the campus. Not only must due credit be given to those students working on the Leader, but Leland Heinze, journalism instructor, and Walter Wallerstedt, printshop expert, must be given their share of the credit. Without their cooperation and guidance the Leader could not have been the truly representative paper that it is.



The Reveille



Editor
ROY DUELL
Assistant Editor
MARY LEE JAMES
Business Manager
ROBERT CHRISTENSEN
Assistant Business Manager
GAIL SCHEUREMAN



Art Editor
DEAN WATT

Staff Photographers
HAROLD ELLIS
PAUL EHRLING

Sport Editor
CHARLES STUPPY

Students
EVELYN CARLEY
MARILYN FRESHOUR

Organizations
SHIRLEY KING
DONNA DARBY

Faculty Sponsor
MR. JOEL MOSS



"The books don't balance"



"My shutter was too slow."



Artist at work



"Sport"



Marilyn



Donna



Shirley



Evelyn



PAUL DUELL
President

Sigma Theta Epsilon

Sigma Theta Epsilon is a national religious fraternity for college men of Methodist preference. The purpose of the organization is to promote wholesome Christian fellowship; to gain an understanding of the history and purposes of the church; and to help train young men as leaders wherever they go.

Walter Maxwell, campus supervisor, is sponsor for the group. Officers for the year were Paul Duell, president; Neff Wilds, vice-president; Jerry Starkey, secretary; Wayne Brubaker, treasurer; James Seuzer, pledge master; Ray Duell, corresponding secretary; Robert Loomis, historian; Dale Ficken, service chairman.



ALBERTA HUEFTLE
President

Kappa Phi

"Upon this rock I will build my church."

With this thought in mind the young women of Methodist preference work together to help each girl obtain religious training, leadership, and wholesome social life so that she may become a stronger woman of the church and world of tomorrow.

Officers for the year 1949-1950 were Alberta Hueftle, president; Lola Young, vice-president; Harriet Klenk, recording secretary; Wanda Latas, corresponding secretary; treasurer, Julia Harris; chaplain, Gerry Gale; historian, Lois Jean Robinson. Sponsor for the group was Mrs. Paul Mundell; co-sponsor was Mrs. Ed Davis.

MARION G. McDONALD
Sponsor



Second Generation Club

The Second Generation Club is an organization of sons and daughters of former students. The fact that fifteen percent of the student body are eligible for membership indicates an institution worthy of our highest commendation. Marion McDonald is the faculty sponsor. Members pictured are: P. Hills, J. Dodd, B. Doxon, Leo Lake, J. Thorns, J. Chambers, A. Hueftle, D. Thompson, N. Weber, M. Yeagy, R. Burnett, D. Burnett, M. Hooker, D. Boxberger, A. Rice, D. Fleming, R. Reinking, W. Kraus, P. Lancaster, D. Marcy, H. Townley, Lola Young, C. Deutscher, B. Brown, W. Vine, M. Ford, M. Freshour, E. McKee, B. Maxwell, P. Warren, C. Kvasnicka, D. Luce, P. Clark, D. Werhan, D. Crippen, G. Scheuerman, D. Jones, M. Field, P. O'Toole, L. Robinson, D. Mills, V. A. McKinley, P. Gales, C. Parr, and M. Shaw.



Tigerettes



MARY LEE JAMES
President

Pep is symbolized by the gold sweated Tigerettes on the campus of Fort Hays State. With true spirit, loyalty and enthusiasm, the girls lead the student body through the entire athletic season. The Tigerettes were in charge of the Homecoming half-time activities.

Leaders of these pep-boosting girls have been: Mary Lee James, president; Alberta Hueftle, vice-president; Patricia O'Toole, secretary; Margaret Jellison, treasurer.





W. A. A.

For all women on the campus interested in physical education or in combining play with college work, the W. A. A. has many possibilities. Not only do they participate in sports and carry on the women's intramural program, but they hold their traditional carnival with the cooperation of other campus organizations.

Another annual custom carried out by the W.A.A. under the guidance of the president, Gerry Gale, was the high school play day which took place in the spring. The president was ably assisted by the following: Marilyn Somers, vice-president; Wilma Horner, secretary; and Harriet Brin, treasurer.



GERRY GALE
President





Wesley Hall



GERALDINE GALE
President

Gab-fests, spreads, formals and even studying are but parts of that important whole—college life—which one finds at Wesley Hall. There, forty-four girls and Mrs. Gordon, housemother, work together to make college life one pleasant experience after another.

Comprising the executive group at Wesley Hall are: Geraldine Gale, president; Lutie Ann Losey, vice-president; and Barbara Billings, secretary-treasurer.

MRS. GORDON
Housemother



They're Reading "Good Housekeeping"





Custer Hall

Under the guidance of Mrs. Stewart and Mrs. Rockwell, housemothers, were the eighty-eight girls living at Custer Hall. Having formal and informal parties, holding open house and entertaining the girls of the Danish gym team made up only a few of the highlights of the year at Custer Hall.

Serving as officers this year were: Shirley Tharp, president; Barbara McCormick, vice-president; Barbara Hale, secretary; and Nola James, treasurer.

SHIRLEY THARP
President





Y. M. C. A.



RICHARD McCALL
President

In an effort to induce Christian faith and character, the Fort Hays State Y.M.C.A. has conducted weekly meetings to discuss problems pertinent to personal living, society, and local and national affairs. The group has as its purpose projects promoting leadership, service, and social activities.

The Y.M.C.A. is a member of the Young Men's

Christian Association of the United States and is a participant in the World Student Federation.

Officers for the fall semester of 1949 were: Richard McCall, president; Glen Thompson, vice-president; John Smith, secretary; Ardon Brandyberry, treasurer; and Paul Krause, chaplain.



Y. W. C. A.



LUTIE LOSEY
President

A religious organization, having as its goal the desire to realize a full and creative life through a growing knowledge of God, is the Young Women's Christian Association of Fort Hays State. It is the determination of every member of this organization to have a part in making this life possible for all people.

The Y.W.C.A. has worked consistently with the

Y.M.C.A. and in the spring played an important part in the sponsoring of Religious Emphasis Week.

The group this year was under the leadership of Lutie Ann Losey, president; Jane Ruth, vice-president; Dora Jean Nichol, secretary; and Mary Louise Harvey, treasurer. Miss Rosella McCarroll sponsored the organization.



The Reville King, Leland Page, and Queen, Patsy Jean Earl, and seventeen attendants reigned over the annual Reville Ball.

President M. C. Cunningham, assisted by Miss Patsy Spomer and Miss Kay Suran, officiated over the coronation.



The royalty was selected on the basis of scholarship and leadership by the former Senator Arthur Capper, of the Capper Publications, Mrs. Ada Montgomery, Women's Editor of the Topeka Daily Capital, and Mr. Glenn Cooper, Art Editor for the Household Magazine, all of Topeka, Kansas.

HOMECOMING



King Robert Haney and Queen Shirley Britt, attended by Princess Shirley King and Myron McKinley, reign over the 1949 Homecoming festivities.



... and the champions of 1937 watched while the tottering Emporia Hornets went down in defeat.



The Alphas won first in the float parade . . . to receive "Frankensteinian" congratulations.



Bands marched . . .



and everybody danced.

*Everybody had fun but the sophomores . . .
 . . . to make the 1949 Homecoming season the
 best yet.*





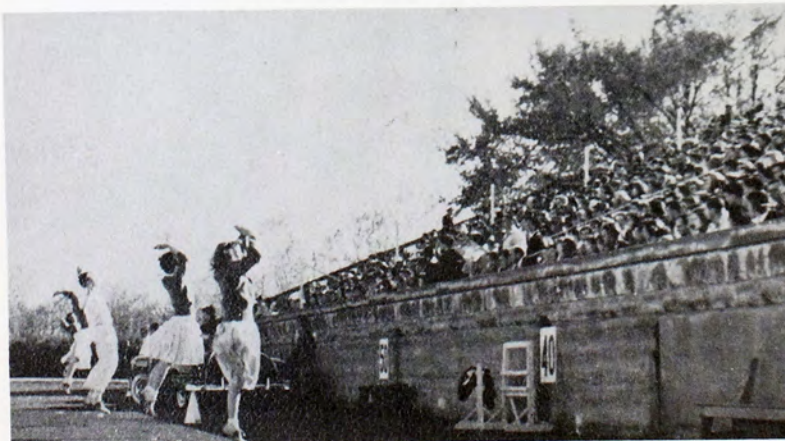
BOB BLAZER
President

"K" Club

To be eligible for membership in the K-Club an athlete must have earned a letter in intercollegiate athletic competition. Membership does not stop there, however. This organization has as its responsibility the enforcing of the rules and regulations of the college as well as the general promoting of student pep and enthusiasm.

In the way of social activities, the K-Club annually sponsors its formal dinner-dance which is held in the spring. Not to be forgotten is the yearly appearance on the campus made by K-Club pledges. Officers for the past year were: Bob Blazer, president; Keith Balding, vice-president; and Fred Simmons, secretary-treasurer.

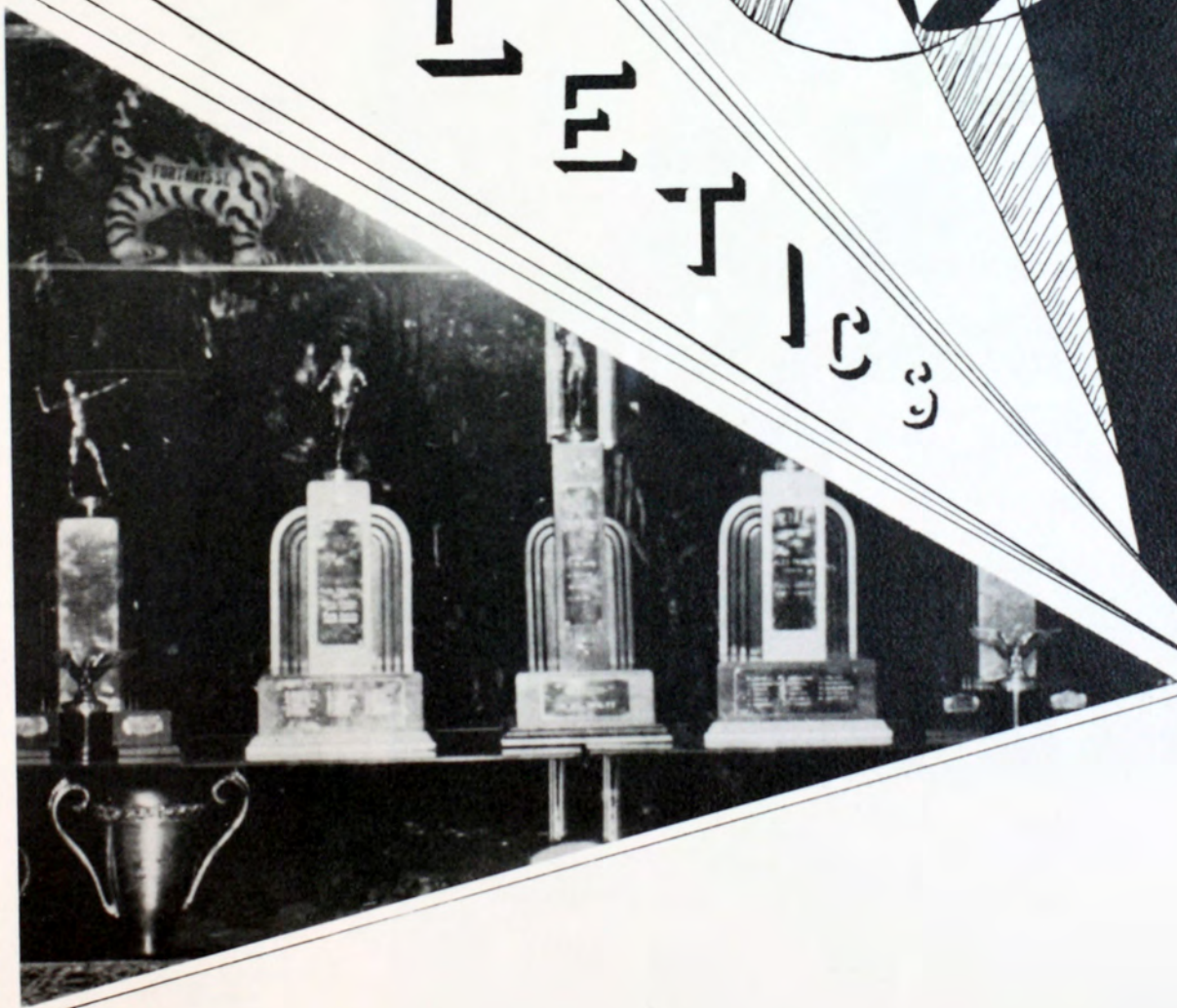
The Cheerleader on Parade



Even athletes get hungry



ATHLETICS

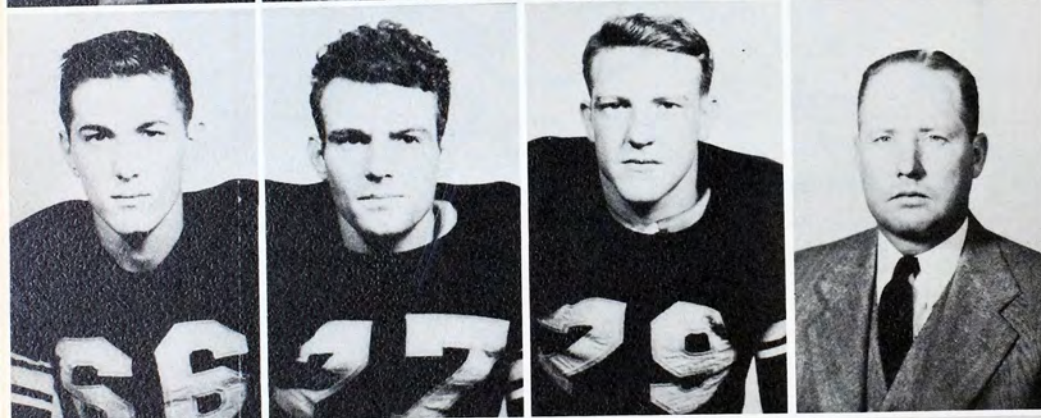




HARRY JOHNSTON
End
RAYMOND SKUBAL
Guard
JOHN MURPHY
Guard
PAUL "BUSCH" GROSS
Director of Athletics



CHARLIE JOHNSON
Tackle
KEITH BALDING
Tackle
ROGER BROWN
Center
ALEX. FRANCIS
Asst. Coach



GENE HESS
Quarterback
JACK HAGUE
Halfback
REX MARX MILLER
Halfback
RALPH "RED" HUFFMAN
Head Coach



DON LUESZLER
End
REX McCONNELL
Fullback
LEON ROBERTS
Fullback
CADE SURAN
Asst. Coach



BILL CAMPBELL
Guard
HERSHEL BETTS
Halfback
DON NICHOL
End
MARION McDONALD
"B" Squad Coach

Football

GEORGE PFEIFER

End

BOB WAHLMEIER

Tackle

COTTY MATAL

Halfback

MARVIN MAUNE

End



ART HAMILTON

Halfback

VAUGHN WELLS

Tackle

MEL JONES

Tackle

MARION SCHMIDT

Halfback



DAN PFEIFER

Center

LeROY GERTSNER

End

HAROLD AUGUSTINE

Guard

FRANK HAAS

Tackle



PETE KOERNER

Guard

WILFORD HOOVER

Guard

HERB GREENSTREET

Quarterback

DON FOWLER

End



JOHN CARMODY

Halfback

STEVE GARRITY

Center

JIM FARLEY

Quarterback

BOB FEASEL

End





Cotty breaks loose



Marxmiller around left end

Football

The 1949 grid season saw the Tigers win five games and drop four. Coach Huffman and his staff fielded a well balanced club that finished in a third place tie in the conference.

Kansas Wesleyan met the Tigers at Salina in the curtain-raiser and the Coyotes were dealt the worst defeat since the series was inaugurated. Charlie Johnson led the hard charging Tiger line and backs like Hague, Marxmiller, and Carmody ran the total up to 34-0.

In the next tilt the locals stepped out of their class and journeyed to Manhattan to meet Kansas State. The Tigers learned their lesson the hard way when they went down to defeat 55-0.

Southwestern's Moundbuilders were the first conference foe for the Tigers. The crew from Winfield played the locals to a standstill in the first half, but in the second session two long drives netted the Tigers a pair of touchdowns and a 14-0 triumph.

In the second conference game the Tigers grabbed an early lead but were unable to hold the powerful Pittsburg Gorillas in check. The final score was Pittsburg 26, Fort Hays 7.

The Huffman-coached locals got back in stride the following week against the Ravens of St. Benedict's. This fracas saw the Tigers grab an early lead and then stave off desperate Raven efforts to get back into the game. One of the brightest spots in this tilt was the performance of freshmen linemen, Don Fowler, Leroy Gerstner, and Bob Wahlmeier. The final score was Ft. Hays 33, St. Benedict's 20.

In mid-October the Tigers journeyed to Colorado Springs for a tilt with Colorado College. The Tigers showed power on the ground but failed to gain when they approached paydirt. There were 14 fumbles in this game and the western crew took the best advantage of them to set down the Tigers by a 19-7 count.

The 1949 Homecoming game couldn't have been played on a nicer day and it didn't dampen the student spirit any when the Tigers pulled the top CIC upset of the year. The Emporia State Hornets were the defending champions and were expected to repeat. The locals never gave the Hornets a chance to get set and early in the tilt a bad pass from center by the Hornets cost them a safety. When the half ended the Tigers still hung on to that slim 2-0 lead. In the third period Hays drove into Emporia territory, and then it happened; Cotty Matal crashed through the left side of the Hornet forward wall, cut to the west sideline, and behind beautiful blocking sped 35 yards for the only touchdown of the game. The final score was Fort Hays 9, Emporia State 0.

The next Tiger test was at Topeka against the Washburn Ichabods, and it resulted in the fourth defeat for the gold and black. The local crew sparkled at times but was unable to match the slick Ichs who claimed a 34-13 victory.

Rockhurst came to Hays for the season finale and gave the Tigers a scare by scoring the first touchdown but that was as far as they got. The Tigers racked up 26 points and held the Hawks scoreless. McConnell, Hague, and Marxmiller played good ball in this tilt as did linemen Koerner and Balding.

Jack Hague and Keith Balding were honored with all-conference recognition.

Next year Coach Huffman will undoubtedly be hampered by the loss of eleven seniors. A bright light in the proceedings, however, is the fact that Coach Marion McDonald's "B" squad turned in an undefeated record.

The following seniors will be lost through graduation:

Keith Balding, Roger Brown, Bill Campbell, Jack Hague, Charlie Johnson, Harry Johnston, Mel Jones, Don Leuszler, John Murphy, and Raymond Skubal.

That costly Hornet fumble

Fran Welsh takes the loser's walk





Pinky sprints up field



THE COACHING STAFF
McKinzie—Huffman—Francis—McDonald
Suran—Gross



Oomph!

Football

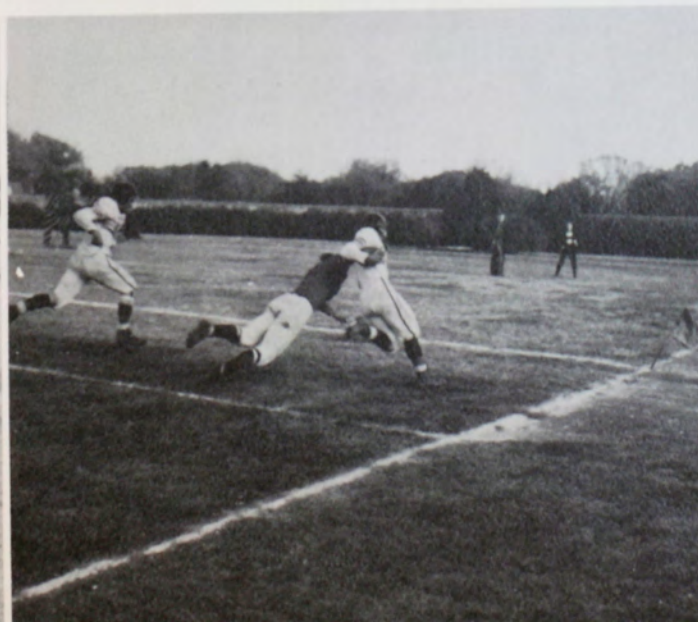
Fort Hays	34	Kansas Wesleyan	0
Fort Hays	0	Kansas State	55
*Fort Hays	14	Southwestern	0
*Fort Hays	7	Pittsburg State	26
*Fort Hays	33	St. Benedicts	20
Fort Hays	7	Colorado College	19
*Fort Hays	9	Emporia State	0
*Fort Hays	13	Washburn U.	34
*Fort Hays	26	Rockhurst	7

*Conference game

After the battle



The last 5 yards



Portrait of victory



Basketball



GLENN CONNER
GLENN MITCHUM
AL BILLINGER
DON NICHOL



FRED SIMMONS
GUY CONNER
PETE DAWSON
A Simmons lay-up



CURT TARRANT
CARL PAUSTIAN
Up goes Al



DON MOECKEL
BILL DOUGHERTY
CADE SURAN, *Head Coach*
Nick hits one against Hornets



REX McCONNELL
BOB ZIEGLER
RALPH "RED" HUFFMAN
Assistant Coach
MARION McDONALD
"B" Squad Coach

Basketball

Conference Champs

Scramble

A tough one for Zeke

A Simmons set shot



Paustian's left-handed shot

Here's how it's done



The Mitchum fake

A Conner jump shot



Up we go

Two points





Basketball

The 1949-50 Basketball season was the most successful ever enjoyed by a Tiger quintet. Coach Cade Suran's charges won the CIC championship undisputed and lost only six games of the twenty-five that they played. Until this season no Ft. Hays cage outfit had ever managed to win the CIC title undisputed.

The Tigers started the season like champions when they blasted highly regarded Phillips University to the tune of 71-31.

Then they took a pair of victories from Colorado College on the western crew's own court. The scores were 65-44 and 66-39.

Kearney of Nebraska visited the Sheridan Coliseum and went home on the short end of an 86-30 count.

The locals ran their streak to five when they slipped by the hot shooting quintet from Eastern New Mexico. The Tigers earned a 66-51 edge.

When the Suranmen moved into Oklahoma for games with Oklahoma Baptist and Oklahoma City U. they were somewhat disturbed by the slow brand of ball played by the Sooner clubs. The result of the trip was that the Tigers lost their first two games.

Moving into Sheridan Coliseum the Gold and Black took a pair from Maryville of Missouri and then looked toward conference play.

The Tigers opened the CIC season with Washburn at Topeka and caused widespread disappointment by falling before the surprising Ichabods. Glenn Conner contributed 16 points to the Tiger cause.

Glenn Mitchum led the Tigers back into the conference fight as he looped in 20 points in the 56-49 victory over St. Benedict's.

The away from home jinx caught up with the Tigers and they dropped a 49-41 decision to Maryville on the Missourians' court.

When Kansas Wesleyan's undefeated Coyotes stalled successfully in the last few minutes Fort Hays lost their fifth game of the season by the narrow margin of one point.

Although few teams in the conference suspected it, the Tigers were on their way back as they blasted St. Benedict's Ravens to the tune of a 68-57 victory.

Emporia State's defending champions got a rude surprise when the Suranmen chased them all over Sheridan Coliseum to hang up a 65-50 victory. The Hornets never knew how it felt to be in the lead as the Tigers connected from all over the court.

Washburn U. outplayed the locals in the second half of their clash at Hays but the Tiger first half edge was too great to overcome. Final score: Ft. Hays 64, Washburn 61.

A cold Tiger quintet met a hot Southwestern crew on the Winfield court and the result was the last Tiger regular season loss.

At Emporia the Tigers did it again to prove that their first victory was not an accident. Old reliable, Glenn Mitchum, racked up 18 points to lead the Tiger attack. Final score: Ft. Hays 57, Emporia State 50.

When heralded Kansas Wesleyan visited Sheridan Coliseum the Tigers dealt the Coyotes a crushing 72-43 defeat. Fred Simmons' 17 points lead the locals to this victory which turned out to be the Salina crew's only regular season loss.

Two more victories came the Tiger way as they bested Pittsburg and Oklahoma City U. on the local court. The highly rated Sooner outfit possessed a skyscraper center but Tiger speed wore him down to their size.

Rockhurst offered the Tigers little trouble as they went down hard by an 84-33 count.

A rematch with Southwestern in Sheridan Coliseum saw the Tigers gain sweet revenge as the highly rated Danny Kahler was held to a mere 6 points. Mitchum chalked up 17 counters for the locals.

The big game for the Tigers was the Pittsburg tilt at Pittsburg for it could well decide the Tigers' fate in conference play. The Gorillas played their hearts out and with 11 minutes left in the fray Pittsburg led 35-30 but the Tigers got red hot as Conner, Nichol, and Simmons poured points through the cords. The final score Ft. Hays 56, Pittsburg 43.

In the finale for the season Rockhurst again posed no problem for the Suranmen as they sewed up the conference title with an 87-53 triumph.





One for the visitors



"Dutch" pops one



A Paustian lay-up

Season Summary

Ft. Hays	71	Phillips U.	31	*Ft. Hays	68	St. Benedicts	57
Ft. Hays	65	Colorado Coll.	44	*Ft. Hays	65	Emporia State	50
Ft. Hays	66	Colorado Coll.	39	*Ft. Hays	64	Washburn U.	61
Ft. Hays	86	Kearney of Neb.	30	*Ft. Hays	39	Southwestern	52
Ft. Hays	66	E. New Mexico	51	*Ft. Hays	57	Emporia State	50
Ft. Hays	43	Okla. Baptist	53	Ft. Hays	72	Kan. Wesleyan	43
Ft. Hays	27	Okla. City U.	36	*Ft. Hays	60	Pittsburg	52
Ft. Hays	78	Maryville (Mo.)	60	Ft. Hays	53	Oklahoma City U.	40
Ft. Hays	59	Maryville (Mo.)	44	*Ft. Hays	84	Rockhurst	33
*Ft. Hays	48	Washburn U.	56	*Ft. Hays	76	Southwestern	54
*Ft. Hays	56	St. Benedicts	47	*Ft. Hays	56	Pittsburg	43
Ft. Hays	41	Maryville (Mo.)	49	*Ft. Hays	87	Rockhurst	53
Ft. Hays	57	Kan. Wesleyan	58				

Won 19 Lost 6

*Conference Games

Rebound conscious

That Salina heart-breaker

Looks like a foul



TRACK and FIELD



Track and Field

GLENN TUTTLE
All-Conference
Pole Vault

A Benoit 2 Mile victory

BILL CAMPBELL
All-Conference
Javelin

ALEX FRANCIS
Head Coach

Hague clears the bar

DON NICHOL
All-Conference
440 yard run

Mile relay finish

FRED SIMMONS
All-Conference
High Jump





Up and over



Nick takes the CIC 440

Track and Field

In 1949 Coach Alex Francis and his assistant, Coach Cade Suran, continued to turn out top flight Track teams.

As a warm-up for the tough season ahead, Coach Francis took several of his more seasoned performers to the Indoor Meet at Colorado University. Although they were competing with larger schools the Tigers gave a fine account of themselves. Don Nichol gained a first place tie in the 880 yard run and Fred Simmons leaped to a third place tie in the High Jump.

Various kinds of injuries hindered the locals when they journeyed to the Emporia Relays. The injuries failed to dampen the Tiger spirit and they picked up victories in four events to gain runner-up spot in the meet.

Kearney of Nebraska won more first places than the Tigers in the first Dual Meet of the season but Hays team strength enabled them to pile up enough points to win the meet.

The Tigers again took to the road to compete in a Triangular Meet at Hastings, Nebraska. Their opponents were Hastings and Doane College. The Tigers promptly racked up eight first place victories and a first place tie to clinch the decision.

The Moundbuilders of Southwestern were the next crew to fall before the Hays speedsters. The Winfield thin-clads managed to annex only two events.

Probably the most notable victory attained by the Tigers was their conquest of mighty Wichita U. who had previously tied Emporia State. This meet was a thriller from start to finish. Neither team was able to gain a commanding lead and the outcome hinged on the final event. This event was clinched by the speedy Tiger Mile Relay Team composed of John Carmody, Bob Kennedy, Ned Johnson, and Don Nichol. Fred Simmons soared 6 ft. 4½ in. to set a new school record in the High Jump. Don Nichol raced 440 yards in 49 seconds flat and this also broke the school record.

In the finale of the season the Tigers dropped a tough decision to well-manned Emporia State in the CIC Meet held at Lewis Field. By virtue of victories in the Conference Meet, Don Nichol, Fred Simmons, Bill Campbell, and Glenn Tuttle gained All-Conference recognition. The Mile Relay team was also awarded this distinction because of their photo-finish victory over the Hornets. Richard Benoit finished second in the Two Mile run but his time of 10:13.9 broke the Ft. Hays record.

Coach Francis will find it difficult to replace such sterling performers as Ned Rolfs and Gleyne Lowe who will be lost through graduation.

Tuttle takes Wichita in the low hurdles



Kennedy sails in the broad jump





A close one for Nichol



A Johnson finish

Track and Field

Emporia Relays

Emporia State	37
Fort Hays State	29
Wichita U.	25½
Southwestern	19½
Pittsburg	15
Ottawa	7
Coll. of Emporia	3
Friends U.	1

Hastings Triangular Meet

Fort Hays State	96 4/5
Doane College	42 3/5
Hastings	30 3/5

CIC Meet

Emporia State	76
---------------------	----

Can't win 'em all

Fort Hays State	49
Washburn U.	25
Southwestern	8
Pittsburg	7
Rockhurst	0
St. Benedicts	0

Dual Meet

Fort Hays State	87¼
Kearney of Neb.	75¾

Dual Meet

Fort Hays State	104
Southwestern	27

Dual Meet

Fort Hays State	66 2/3
Wichita U.	64 1/3

Hague in the broad jump



Tennis and Golf



Don Moeckel



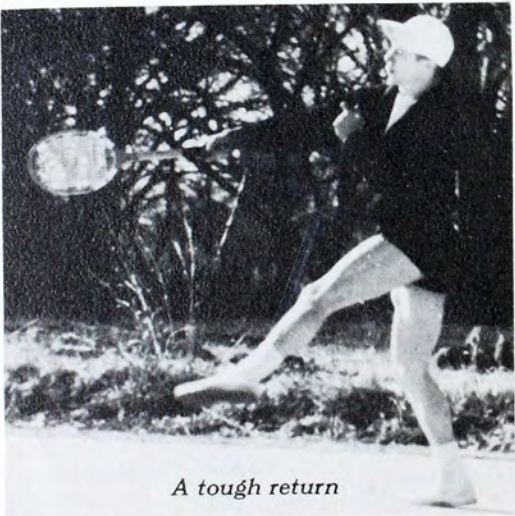
Glenn Mitchum



Leroy Bingaman



A McKinzie putt



A tough return



"Dutch" backs up



In the rough



Bob Gorham



Bob Blazer



Norvin Snook



Darn that sand trap



Eye on the ball



Ooop! Lost the club



How to putt

Tennis and Golf

Fort Hays State tennis and golf teams, under the supervision of Coach Cade Suran, competed in the Central conference tennis and golf meet at Southwestern May 7. Tiger golfers did not place, but Charlie Pearson placed fourth in tennis singles to give Fort Hays their only point in the meet. Washburn won the CIC tennis match with 10 points.

During the year, Tiger golfers won two matches and lost two, beside placing second in a triangular match between Fort Hays State, Kansas Wesleyan, and College of Emporia. Tiger netmen won just one match all spring, beating Wichita University in the first engagement of the season.

Golf lettermen were Bob Blazer, Glenn Mitchum, Gerald Scheer, and Vergil McKinzie. Letters in ten-

nis went to Carl Brecheisen, Leroy Bingaman, Charley Pearson, Norvin Snook, Don "Dutch" Moeckel, and Bob Gorham.

The season schedule was as follows:

- April 7 Tennis and Golf matches at Wichita University
- April 12 Tennis match at Bethany
- April 13 Tennis and golf, Kansas Wesleyan here
- April 20 Bethany here, tennis and golf
- April 22 Wichita here, tennis and golf
- April 25 Triangular golf and tennis matches at Kansas Wesleyan
- May 6 and 7 CIC golf and tennis meet at Southwestern

A Gorham serve



Vergil McKinzie



Nice form





BUD FOULK
Tennis Singles Champ



**CECIL CALVERT
KEN SCHWERTFEGER**
Tennis Doubles Champs



DALE HEARON
*Intra-Mural
High Point
Man 1948-49*



**JOHN CARMODY
MAC McDANIEL**
Aerial Darts Doubles Champs



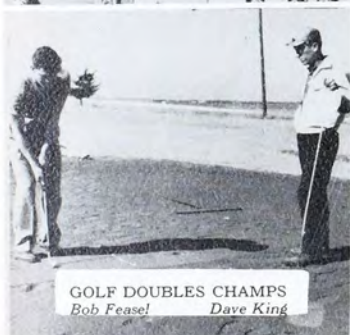
ARDEN CRONN
*Table Tennis
Singles Champ*



PHI SIGMA EPSILON
*Organization League
Champions*



INTRA-MURAL STAFF
Kennedy Betts Francis Nichol



GOLF DOUBLES CHAMPS
Bob Feasel Dave King



PHI SIGMA EPSILON
Swimming Champions



DUFFEY'S TAVERN
Independent League Champions





McDaniel

Hubbard



Hearon



Horner

Scheib

Intramural-Sports

The 1949-50 Intra-mural season started much like the preceding one. The Tkes again won the Touch Football crown and seem to have an even chance of retaining the Intra-mural trophy won by them last year. Intra-mural high-point man, Dale Hearon, is back and should be a big gun in the Tke attack.

As the season got under way, Don Hertel led the Phi Sigs to victory in the Intra-mural swimming meet. Sig Tau star, Bob Blazer, led his fraternity into the second place spot.

The golf tournament added to the Phi Sig totals as Roger Brown won the singles title and the combination of Bob Feasel and Dave King added the doubles crown.

The Tkes and Sig Taus gained a split in the Tennis Tourney. Tke, Duane Foulk came out on top in the singles tourney while Ken Schwertfeger and Cecil Calvert claimed the doubles title for the Sig Taus.

Director of Intra-murals, Alex Francis, added something new to the 1949-50 program. A free-throw tournament was organized and completed, Lloyd Asher of Great Bend won the title of best free-thrower by

sinking 80 of a possible 100 throws.

In the Basketball tournament the Phi Sigs won the Organization title for the fourth consecutive year. Duffy's Tavern won the Independent League title and added the school title when they downed the Phi Sigs by a 33-21 count.

Individual sports results again saw the Phi Sigs gain the edge. Arden Cronn of the Sig Taus won the singles title in Table Tennis while Phi Sigs, "Mac" McDaniel and Joe Hubbard annexed the doubles crown.

The Phi Sigs swept the shuffleboard tourney winning both the singles and doubles titles. Sam Moore won the singles crown while Dale Scheib and Harley Horner grabbed the doubles victory.

The Tkes got into the act when Dale Hearon won the Aerial Darts singles title but Phi Sigs, "Mac" McDaniel and John Carmody, came back strong to win the doubles title.

In order to operate the Intra-mural program at peak efficiency, Coach Francis selected able assistants such as Hershel Betts, Bob Kennedy, and Don Nichol.

Moore

Tau Kappa Epsilon Intra-Mural Champions 1948-49

Asher



Women's Athletics

Dancers at ease



*"K" Sweaters are
awarded to members
of the Women's Athletic
Association for all
around athletic activity.*

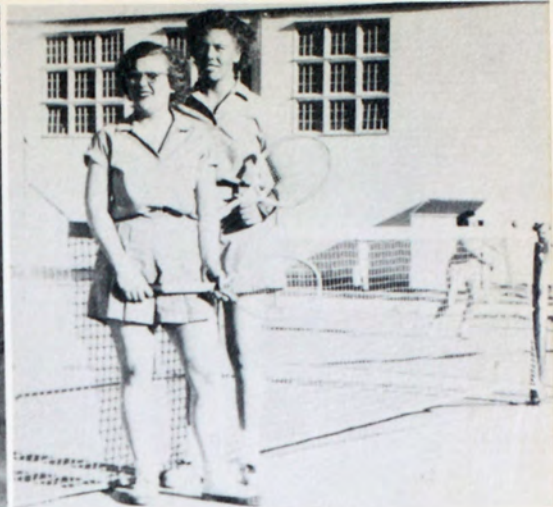


Take your pick





Daisy or wagon wheel



A pair of champs

Women's Athletics

Believe it or not, the women on these pages are earning college credit while at play. The women's physical education department offers a well-rounded program of activity, which includes courses in health education, team and individual sports, rhythmic activities, swimming, theory courses, and recreation.



Ooo-la! la!

The girls mean business



Time out for horse-play



The Reveille Staff and Sponsor wish to take this means of expressing their appreciation to the business men of Hays, Kansas, for their wholehearted backing and support in the production of this year book. We also wish to express our gratitude to Mr. Walter Wallerstedt for his technical advice and assistance, to Mr. John Hibbert for assisting with the photography, to Mr. Orlan Carmichael, the contracted photographer, and to all students, faculty members, and the administration for their readiness to co-operate.

Our special thanks to Mr. Paul Bennett, of Semco Color Press, for his help in making possible a successful publication.

THE REVEILLE STAFF



Custer Hall Formal

GEO. PHILIP

SCOTTY PHILIP

GEO. PHILIP & SON

DEALERS IN HARDWARE

PAINT BRUSHES, PAINTS and GLASS

GUNS and AMMUNITION

TOOLS and CUTLERY

PHONE 53

EIGHTH and MAIN

HAYS, KANSAS

MARKWELL'S

Typewriters

Books

Stationery

Note Books

Fountain Pens

Athletic Supplies

Art Supplies

School Supplies

Playing Cards

Office Supplies

Loose Leaf Ledgers

Loose Leaf Ring Books

Filing Cabinets

Leather Goods

MARKWELL'S BOOK STORE

PHONE 96

1010 MAIN

STILL GROWING WITH HAYS AND COMMUNITY

Capital and Surplus of \$300,000
Total Resources Over \$6,000,000

This strengthening of our Capital Structure is, we believe justified by our confidence in the business future of Hays and the entire part of Western Kansas. We are now in position to keep growing with Hays and community, and serving our customers better and better, as we have been doing since 1888.

*Oldest Bank
in Ellis County*



*Member—
Federal Deposit
Insurance Corp.*

THE FIRST NATIONAL BANK
OF
HAYS CITY, KANSAS

C. I. C. Champions

*Cade Suran . . . a champ
among coaches.*

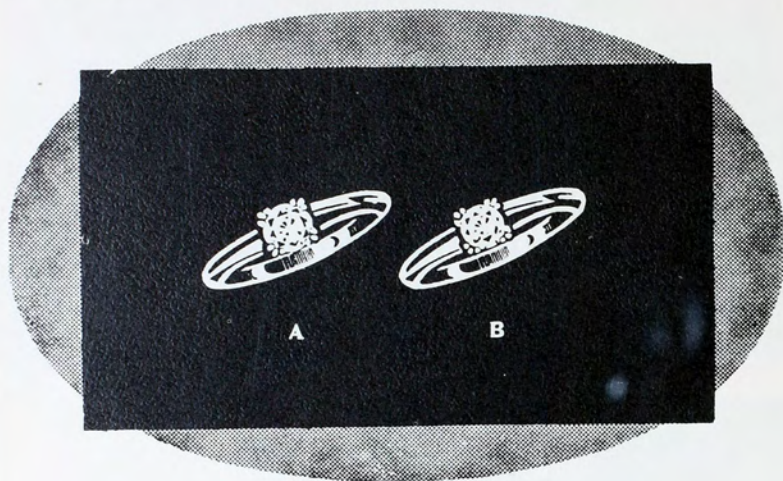


The "Debarkation"

The first undisputed CIC
basketball champions in the
history of Fort Hays State
College.



Which ring is *worth* more?



DON'T BE fooled by a gem's size!

Because, a diamond's color, its clarity and its cutting are *more* important than size in determining its value.

We, as Registered Jewelers of the American Gem Society, abide faithfully by the high gem-grading standards approved by the Society.

Ring "B" is worth more in spite of its smaller diamond. It is priced at **\$305.00** and is of top-bracket gem quality. It would be graded as such by reputable authorities throughout the world.

Note: It's impractical to choose a ring from a "picture." Therefore no attempt at realism is intended, above. See the actual rings here, in "real life"!



THOLEN JEWELRY CO.

Phone 358

804 Main St.

Hays, Kansas

AT
YOUR
SERVICE



HAYS

CHAMBER

OF

COMMERCE

DRY GOODS

SHOES

J. C. Penney Co.

Men's, Boys', Women's, Misses' Clothing



BEN F. DREILING, INC.

Buick, Pontiac and G. M. C. Trucks

HAYS, KANSAS

PHONE 192

KESSLER CLEANING CO.

Complete Laundry Service



Free Pick up and Delivery

Phone 197

126 West 9th

THE TIGER GRILL

Malts—Sandwiches—Soups

“Across from the Campus”

704 Park

Hays, Kansas

HARKNESS PHARMACY

IN HAYS OVER 40 YEARS



- The Choicest In

DRUGS, CANDIES AND TOILET ARTICLES

MAGAZINES . . . ICE CREAM

Phone 76

715 Main

Drink a Bite to
Eat at 10, 2 & 4
o'Clock



Dr. Pepper Bottling Co.

JAMES MOTOR CO.

LINCOLN

MERCURY

GENUINE PARTS

Wholesale

Retail

GUARANTEED SERVICE — REASONABLE PRICES

200 E. 8th

Phone 1350
983

SCHERER'S

1107 Main St.

Phone 306

Exclusive Ladies Ready To Wear

Featuring Nationally Advertised Lines Such as—
NELLY DON — DORIS DODSON and JOAN MILLER Dresses
FASHIONBILT COATS and SUITS
BELLE-SHARMEER Hosiery
VAN RAALTE Hosiery.— Gloves and Undies
Lady Love Slips
FORMFIT — LIFE Brassieres and Girdles
VASSARETTE Girdles

ANN'S FEATURE NATIONALLY KNOWN MERCHANDISE

DRESSES

Daryl Junior
Paula Brooks
Paul Sachs
Bloomfield

LINGERIES

Peter Pan
Wonder Youth
Textron

HOSE

Mojud

SUITS and COATS

Swansdown
Sacony-Palm Beach
Shagmoor

HATS

Gage
Dobles

GLOVES

Dawnelle



Ann's
DRESS SHOP

Mulroy Hotel Bldg.



*Elaine, Marjorie, and Madeline supply the music
at the reception for our new president.*

SCHERER'S SHOE STORE

1109 Main St.

Phone 594

Western Kansas Finest Shoe Store

Featuring High Grade Shoes for Men — Women and Children

Air-Step - Lifestride — Foot Flairs

Roblee and Pedwin for Men

Buster Brown for Children

X-RAY FITTING AVAILABLE

Better Haircuts

at the

BROWN BARBER SHOP

713 Main

Hays, Kansas

Gambles

The Friendly Store,

Where Cash Buys More!

Phone 78

115 West 11th

The A. L. Duckwall Stores Co.



5 CENTS TO \$1.00 STORE

Visit Our Modern Fountain and Luncheonette

Hard work . . .



and good play . . .



make sound minds.



Bissing Clothes & Sporting Goods

CHAMP HATS

Esquire Slacks

Don Juan Sports Shirts

217 WEST 10th

PHONE 300

EL CHARRO MOTEL

and

EL CHARRO CAFE

One Mile East on U. S. Highway 40

Phone 77

Phone 1338



JEP'S SUPER SERVICE STATION

24-Hour Service

MODERN

EFFICIENT

PHONE 400

1302 MAIN



*Betty and Lois do a tap at
Wesley Hall formal . . .*



Another talented faculty member!



Mrs. Rockwell guards Custer Hall . . .



. . . and mother nature protects her own!

Thirst, Too, Seeks Quality

Months of study—Months of pleasant companionship—

All of them summarized in this yearbook, a memento to the effort you have put forth to make a success of your school work. It is our hope that Coca-Cola has in some small way made your task easier—contributed a friendly pause for refreshment to your work or play.

Anywhere, anytime, you will find a frosty bottle of Coca-Cola near-by to help you make any pause "The Pause That Refreshes".

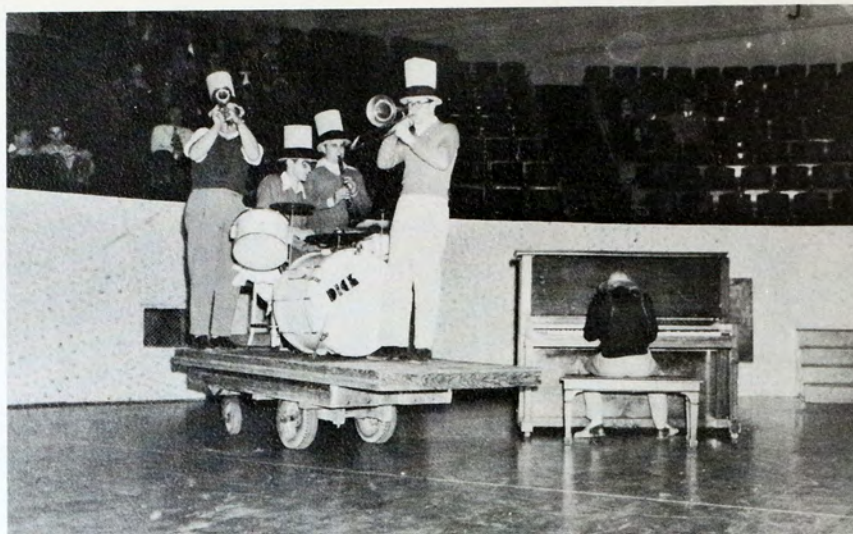


*Ask for it either way . . . both
trade-marks mean the same thing.*

BOTTLED UNDER AUTHORITY OF THE COCA-COLA COMPANY BY

HAYS COCA-COLA BOTTLING COMPANY

Hays, Kansas



*Jim, Bill, Dick, and David, . . . with Gravel Gertie (Johnny)
at the piano*



Ruth and Sig . . . the hayseed kids



And why shouldn't students have families-

DEVELOPMENT OF THE "SAVING" HABIT WILL
INCREASE YOUR CHANCES FOR SECURITY,
HAPPINESS and SUCCESS.

Invest in a Savings Account at the

Farmers State Bank

The Bank Where You Feel at Home

Capital and Surplus \$200,000

MEMBER OF F.D.I.C.

EKEY STUDIO

Portraits — Enlarging

Commercial Photo — Kodak Finishing

Picture Framing

Finest of Photographs

The oldest Studio in Ellis County

218 West 8th

Hays, Kansas

HARDMAN LUMBER CO.

Building Materials DuPont Paint

Builders Hardware

126 East 11th

Phone 437



A history professor turns musician



Mmmmmm!



... ten minute break ...



THE JACK & JILL SHOP

Let Us Clothe Your Children — That's Our Business
Everything for Infants to Pre-teens
Boys Wear from 1 to 12

LAMER HOTEL BUILDING

PHONE 1462

COSMETICS - - - HOSPITAL SUPPLIES - - - STATIONERY

The **ABC** Drug Company

Your Friendly Rexall Store

PRESCRIPTIONS • HALLMARK GREETING CARDS • DRUG SUNDRIES

PHONE 80

HAYS, KANSAS



Trade With Us And Save Money

WIESNER'S

HAYS

KANSAS

FOR
APPRECIATIVE SERVICE
THE

FORT HAYS PHARMACY

SODA FOUNTAIN — DRUGS — MAGAZINES

PHONE 858

1011 MAIN

TRUMBO FLORAL SHOP

"House of Flowers"

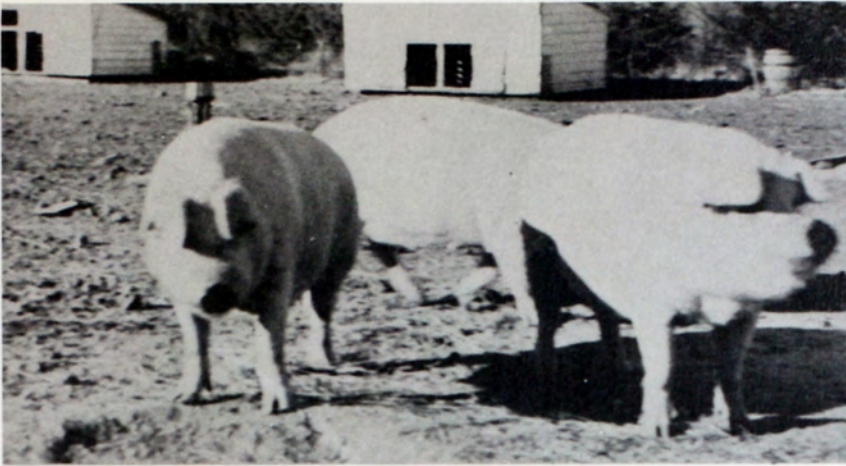
*Potted Plants
in Season*



*Cut Flowers
for Every Occasion*

115 WEST 8th

PHONE 496



Some hams look like this . . .

*. . . and then there
are others!!!!*



A workin' gal

. . . out on the farm





MODI STU

- PORTR
an
- COMME



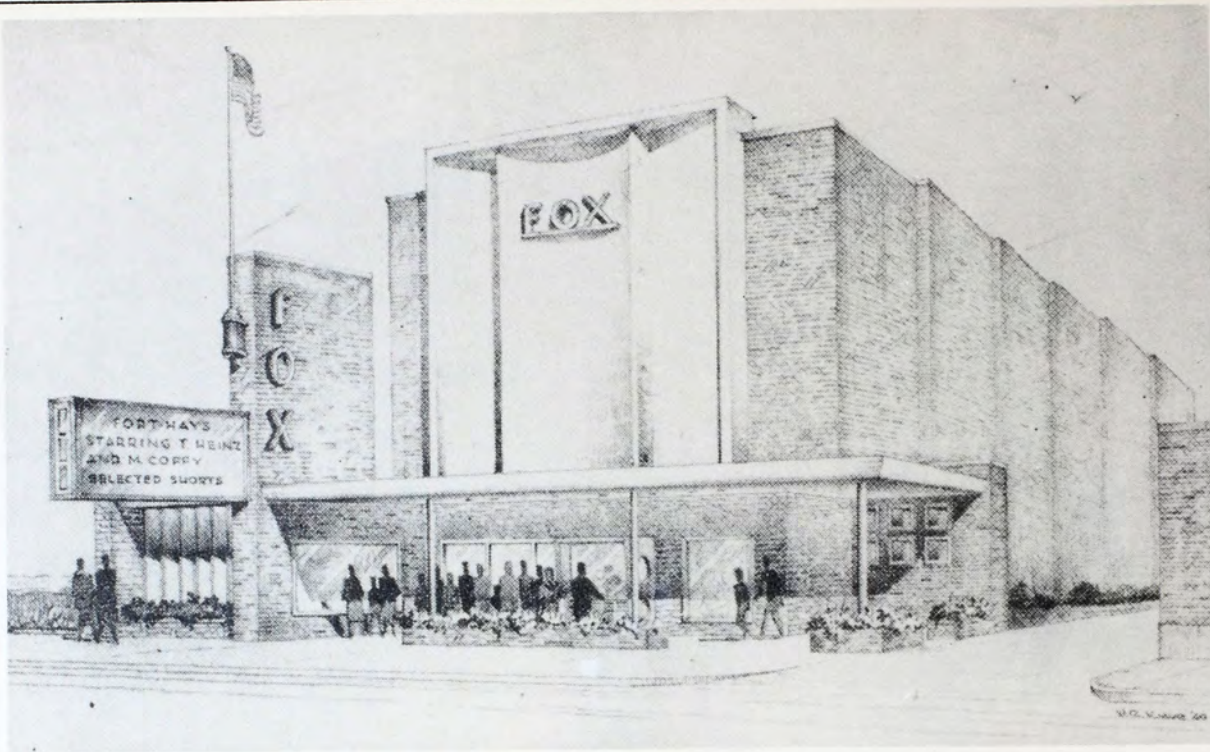
ERNE

DIO

ITS •

CIALS •





THE NEW FOX THEATRE

Show Place of the Midwest



If it's to wear, you'll find it at

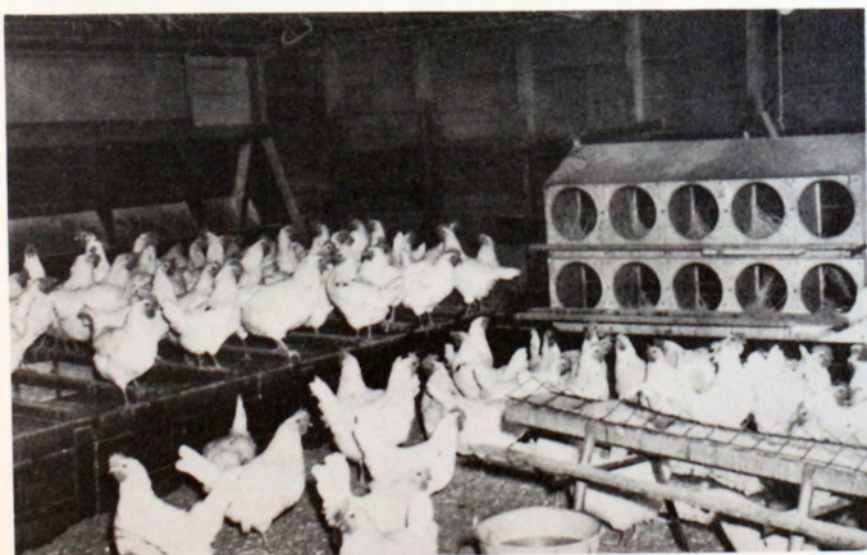
THE CLASSIC-STORE



"People make me nervous . . . !"



*Your voice is in nice form
today, Vesta!*



Is this Wesley or Custer . . . ?

THE HAYS
CREAMERY and ICE CO.

Manufacturers of

PIERE CRYSTAL ICE
ICE CREAM NOVELTIES
KINGS KWALITY ICE CREAM

Phone 484

310 East 11th

HAYS, KANSAS

COLLEGE TEXTBOOKS

SHEAFFER — WATERMAN — ESTERBROOK
ZIPPER NOTEBOOKS GREETING CARDS
PERSONALIZED STATIONERY
SPALDING SPORTING GOODS



SMITH-CORONA PORTABLE TYPEWRITERS

CAMPUS BOOK STORE

BERT E. BERGLAND

Your College Store

PHONE 30

509 WEST 7TH



LEADERS IN STYLE



Come In, Browse Around—

The Welcome Sign Is Always Out!

HAVENER'S

MEN'S AND BOYS'

CLOTHING



Hi, Jim!



... in for the evening?



MANN'S IGA STORE

The Best in Quality Foods

219 West 10th

A Few Words To The Students Of Fort Hays State

The reading of a daily newspaper is a broad education in itself. The daily paper affords a background of general information which no one can obtain in any other way.

Few college students need to be told this, it goes without saying, but there may be young men and young women attending Fort Hays State who do not know the Hays Daily News has complete coverage of world-wide, national, state and home news on every weekday except Saturday, and on Sunday as well. The Sunday Morning News also has features and a comic section as well. The over-all news coverage provided is that of the Associated Press, the world's largest news-gathering agency.

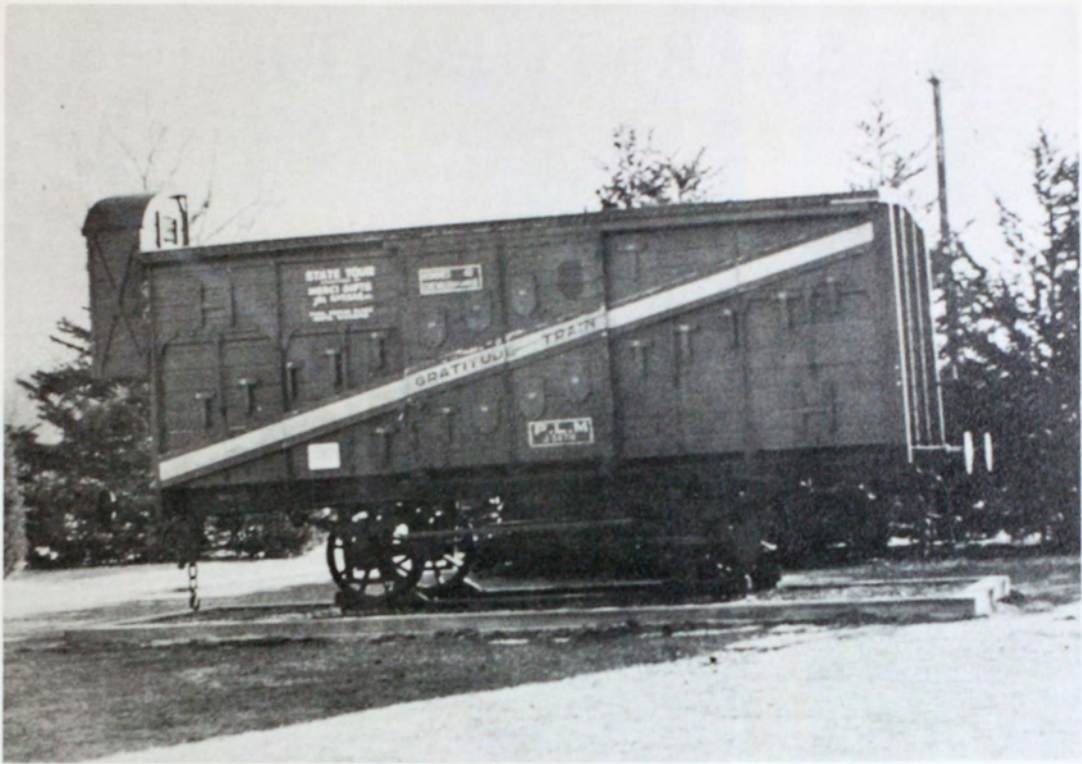
Read the News to be up on all the news that is news.

NEWS PUBLISHING COMPANY

Hays Daily News

Ellis County News

News Commercial Job Printing



The hopes expressed in the Friendship Train near realization . . . as ambitious students redouble their efforts in the fields of food consumption and human nutrition.

STAR THEATER

Always Fine Entertainment for the
Entire Family

Try a Chuckburger at

THE CHUCKWAGON

"where college students are always welcome"

Short Orders and Snacks

Phone 572

Hays, Kansas

THE HOME FURNITURE COMPANY



The Most Beautiful Furniture Store in Western Kansas

THE PHILCO STORE

229 West 10th

Phone 236



This is one time Hague wasn't quick enough . . . !



Little Theatre scores again.

'most everybody listens to—
RADIO STATION

KAYS

NEWS—MUSIC—SPORTS

"1400 on your Dial"

Broadcasting Daily From
the College Studios
on the campus of
Ft. Hays State



Morrison Jewelry

Phone 152

107 West 10

Billinger's Bakery

Distributors of

SUNBEAM BREAD

Pies, Rolls and Cakes

124 West 9th

Phone 640

For Your Mealtime Pleasure

Eat At

NICK'S CAFE

OPEN

From 6:00 A.M. to 11:30 P.M.

Full Course Meals or Short Orders

Home Made Chili and Pies

*Meal Tickets
at Popular Prices*

1006 Main

Hays, Kansas

Dee Erickson Sporting Goods Company

Football

Basketball

Track

Tennis

Hunting and Fishing

Equipment

"The Store

Behind the Sports"

119 W. 11th — Phone 971

HAYS, KANSAS



The Brunswick Hotel

For Your Convenience

MODERN HOTEL AND CAFE FACILITIES

For Reservation—Call 450
701 Main

Walter Ross
Proprietor



The "Headless Horseman"



At the Desk in the Social Building



Guess Who . . . !



THE HAYS MUSIC CO.

V. M. MECKEL



714 MAIN ST.

The Music Headquarters of Western Kansas

PHONE 1215

BELL'S

LADIES READY TO WEAR AND MILLINERY

802 MAIN

Phone 264

HAYS, KANSAS



St. Anthony's Hospital

SISTER FRANCES CLARE, R. N.

Superintendent

This Space Reserved and Paid for By The Active Staff



Rah! Rah! Rah!



- - - and so I said - - -

Gagelman Motor Co., Inc.

FORD SALES and SERVICE

"There's a Ford in Your Future"

528 East 8th

Phone 14

HAYS, KANSAS

Shop The Easy Way . . Phone 1500

Montgomery Ward Catalog Office

114 WEST 11th

HAYS, KANSAS

Sporting Goods
Leather Goods
Riding Equipment
Hobby Supplies

SCHLEGEL'S

118 W. 11th

Hays, Kansas

RUPP MOTOR CO., Inc.

DODGE PLYMOUTH DODGE JOB RATED TRUCKS
MASSEY HARRIS FARM EQUIPMENT

Sales & Service

600 MAIN

PHONE 833

IF YOU WANT THE BEST
• IN HOME COOKED FOOD
GO TO THE

THE ELITE CAFE

LOW PRICES

COURTEOUS HELP

**109 West 10th
Phone 525**

Mr. and Mrs. John Sahli
Proprietors



The Executive Department at Work

Dealers of
CHEVROLET and OLDSMOBILE

O' Loughlin
MOTOR SALES

MECHANIZED AND BODY REPAIR WORK

CARS

NEW and USED

PHONE 474

120 WEST 12TH

Fine Furniture -- Low Prices

KROEHLER
SPARTON RADIOS
YOUNGSTOWN KITCHENS

SEALY
MENGEL
G. E. APPLIANCES

Complete Floor Covering Service

"Comparison is the Measure of Value"

BUTLER'S

119 West 10th

HAYS, KANSAS

Phone 50

WALBURN'S COLLEGE GROCERY



Students, we appreciate your business and the
loyal support you are giving to our store.

MR. AND MRS. W. D. WALBURN

507 West 8th

Owners

Phone 404



The Muck-rakers

Ask Your Grocer for

ENRICHED
SEMOLINO FLOUR

"A Western Kansas Product"

The Hays City Flour Mills

HURST MOTOR CO.

CHRYSLER — PLYMOUTH

Sales and Service

PHONE 1169

219 EAST EIGHTH

THE BEST IN
RELIABLE
SERVICE

FELTEN TRUCK LINE

Daily Service

KANSAS CITY

WICHITA

SALINA

COLBY

and



Intermediate Points
Household Goods

Intrastate and Interstate
Phone 169 Hays



LANG OIL COMPANY

613 EAST 8TH STREET

HAYS, KANSAS



MOBIL OIL

MOBIL GAS

"At the Sign of the Flying Red Horse"

FOOD THAT PLEASES



GRASS BROS.

Phone 4

Hays, Kansas

235 West 10th



The World's Future Food Producers

LAMER HOTELS

in

KANSAS

HAYS

Lamer
Mulroy

SALINA

Lamer
Clayton

ABILENE

Lamer

JUNCTION CITY

Bartell
Crossroads

H. B. LAMER

A. W. STEDHAM

ROYAL TYPEWRITERS

Standard and Portable

Sales and Service



Northwestern Typewriter Co.

Lamer Hotel Building

Phone 1223

HAYS, KANSAS

Say it with flowers

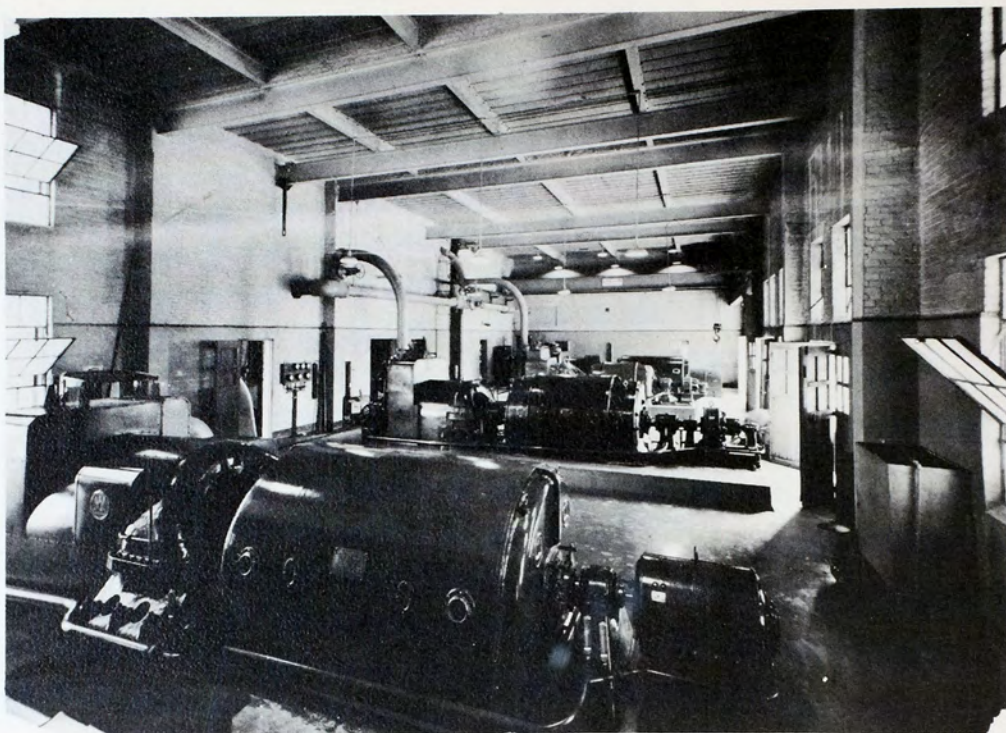
Authorized Florists Telegraph Delivery Shop

Baxter's Flower Shop

705 Main



Phone 130



CENTRAL KANSAS POWER CO.

"The Silver Center of Western Kansas"

VERN WEBSTER
JEWELERS

PHONE 1287

Genuine Orange Blossom Diamonds

LAMER HOTEL BLDG.

HUMBURG CO., Inc.

HARDWARE

APPLIANCES

Butane GAS Propane

Bulk Delivery of Cylinders

110 W. 11th

PHONE 946

A Complete Stock
of Amateur Photo
Supplies & Equipment

HAYS CITY DRUG STORE

"The Corner Drug Store"

Hays Building and Loan Association

★ ★ ★

"Save and Invest"

★ ★ ★

Hays, Kansas

Phone 38

Schwaller Lumber Co., Inc.

Serving You Since 1892

WESTINGHOUSE APPLIANCES, BUILDING MATERIAL

HARDWARE, PAINT, COAL AND WALLPAPER

CALL 92

900 MAIN



Don't Look so Disappointed, John



Sharp Typist



What are they Looking at?



Ho-Hum!



Dr. Reed



"That Old College Spirit"



"Coffee? How Many?"



"Shucks—It was nothin' "



● *Your* **YEARBOOK**
Lithographed by...

SEMCO COLOR PRESS

FINE COLLEGE AND HIGH SCHOOL ANNUALS

B. L. SEMTNER
President

129 N. W. 3rd ST.
OKLAHOMA CITY



Miss Beesley trains future Homemakers in the home economics department.



Work can be fun . . .



*Hummm—
The End!!!*





