

1936

Reveille - 1936

Fort Hays State University

Follow this and additional works at: <https://scholars.fhsu.edu/yearbooks>

Content Disclaimer

The primary source materials contained in the Fort Hays State University Special Collections and Archives have been placed there for research purposes, preservation of the historical record, and as reflections of a past belonging to all members of society. Because this material reflects the expressions of an ongoing culture, some items in the collections may be sensitive in nature and may not represent the attitudes, beliefs, or ideas of their creators, persons named in the collections, or the position of Fort Hays State University.

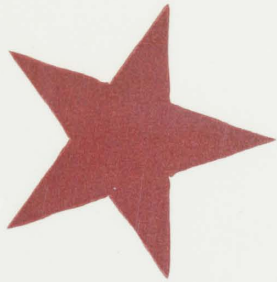
Recommended Citation

Fort Hays State University, "Reveille - 1936" (1936). *Reveille Yearbooks*. 22.
<https://scholars.fhsu.edu/yearbooks/22>

This Book is brought to you for free and open access by the Student Experience Collections at FHSU Scholars Repository. It has been accepted for inclusion in Reveille Yearbooks by an authorized administrator of FHSU Scholars Repository. For more information, please contact ScholarsRepository@fhsu.edu.



REVEILLE ★ 1936







REVEILLE

COPYRIGHT 1936
ALAN RANKIN, EDITOR
GAYLE STOVER, MANAGER



Photography by EKEY . HAYS . KANSAS
Designed and Engraved by the
CAPPER ENGRAVING COMPANY
Monotyped and Printed by the
McCORMICK-ARMSTRONG COMPANY



REVELLE

FORT HAYS

KANSAS STATE COLLEGE

1936



CUSTER ★



OF THE

SEVENTH CAVALRY

The indomitable spirit of "Custer's Pride," the renowned Seventh Cavalry which once fought with red skins where now twenty-two men fight over pig skins, is deeply ingrained in the institution which now occupies the site where once these men lived and fought.

The leadership which they displayed in conquering the plains for civilization is the leadership which our institution, the Fort Hays Kansas State College, is taking to educate the sons and daughters of these western plains. And the hardy pioneer spirit, that spirit which caused the first settlers to stay on through drouth and flood, through hardships and massacres, is part and parcel of this present generation, who also carry on. Our problems today may differ vastly from those of our forebears, but they are similar in that they must be faced, and an attempt made to solve them.

The unconquerable spirit of the old Seventh Cavalry is incorporated and shines forth from the song which we proudly sing:

Western Kansans' Alma Mater
Hail ye men who did create her,
No one else can boast a greater—
K. S. C. Fort Hays.

Sons and daughters chanting,
Black and Gold flag flaunting,
Melodious strains of western plains,
For Right stands she undaunting,
Raise your voices, swell the chorus,
Honor those who went before us,
Labor that she may adore us,
K. S. C. Fort Hays.

Western Empire lies before Thee
On the wind-swept rolling prairie,
Great, as only boldly dare Thee—
K. S. C. Fort Hays.
Sons and daughters seeking,
Trusting to her keeping,
The younger seeds of epic deeds
And future harvest reaping.
Sing her praises, she who taught you
How to live, and how comport you
Cheer for her who nobly wrought you
K. S. C. Fort Hays.



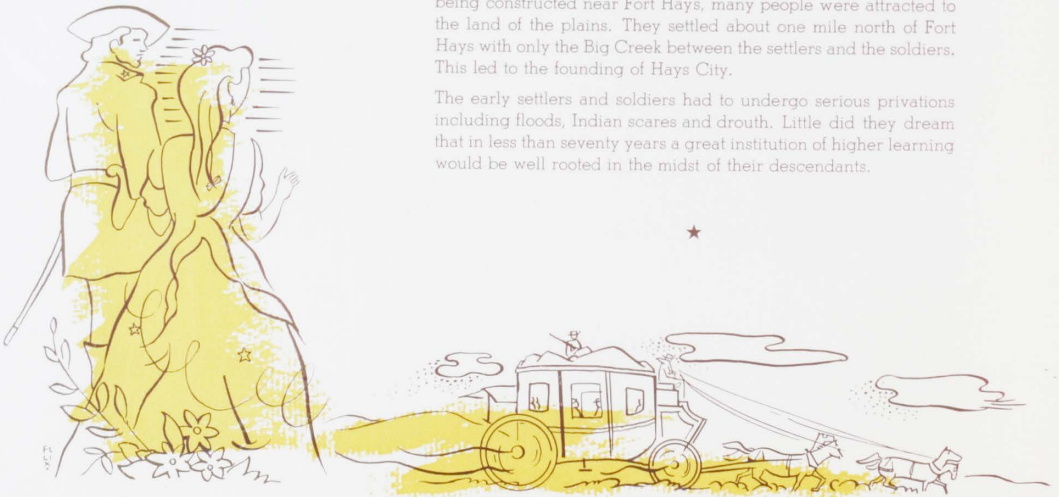
FORT HAYS OF YESTERDAY

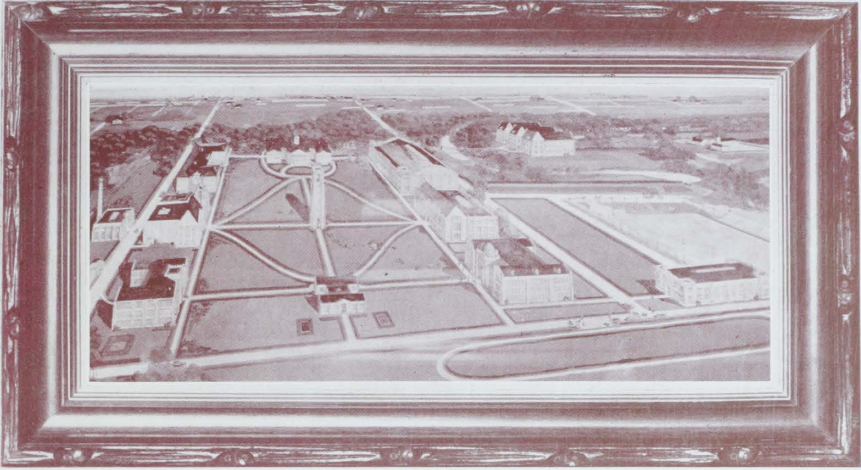
Fort Hays, a military post, which was established in the year 1867 by General Pope, was really built to serve as protection against the Indians who made numerous attacks on the settlers of Fort Hays and to ward off the buffalo stampedes which were quite frequent.

At first, the rolling plains of Kansas seemed uninviting to the people of the East. It appeared to be only an endless chain of prairies—practically timberless and hardly anything but buffalo grass would grow well.

With the approach of the Kansas Pacific Railroad, which was being constructed near Fort Hays, many people were attracted to the land of the plains. They settled about one mile north of Fort Hays with only the Big Creek between the settlers and the soldiers. This led to the founding of Hays City.

The early settlers and soldiers had to undergo serious privations including floods, Indian scares and drouth. Little did they dream that in less than seventy years a great institution of higher learning would be well rooted in the midst of their descendants.





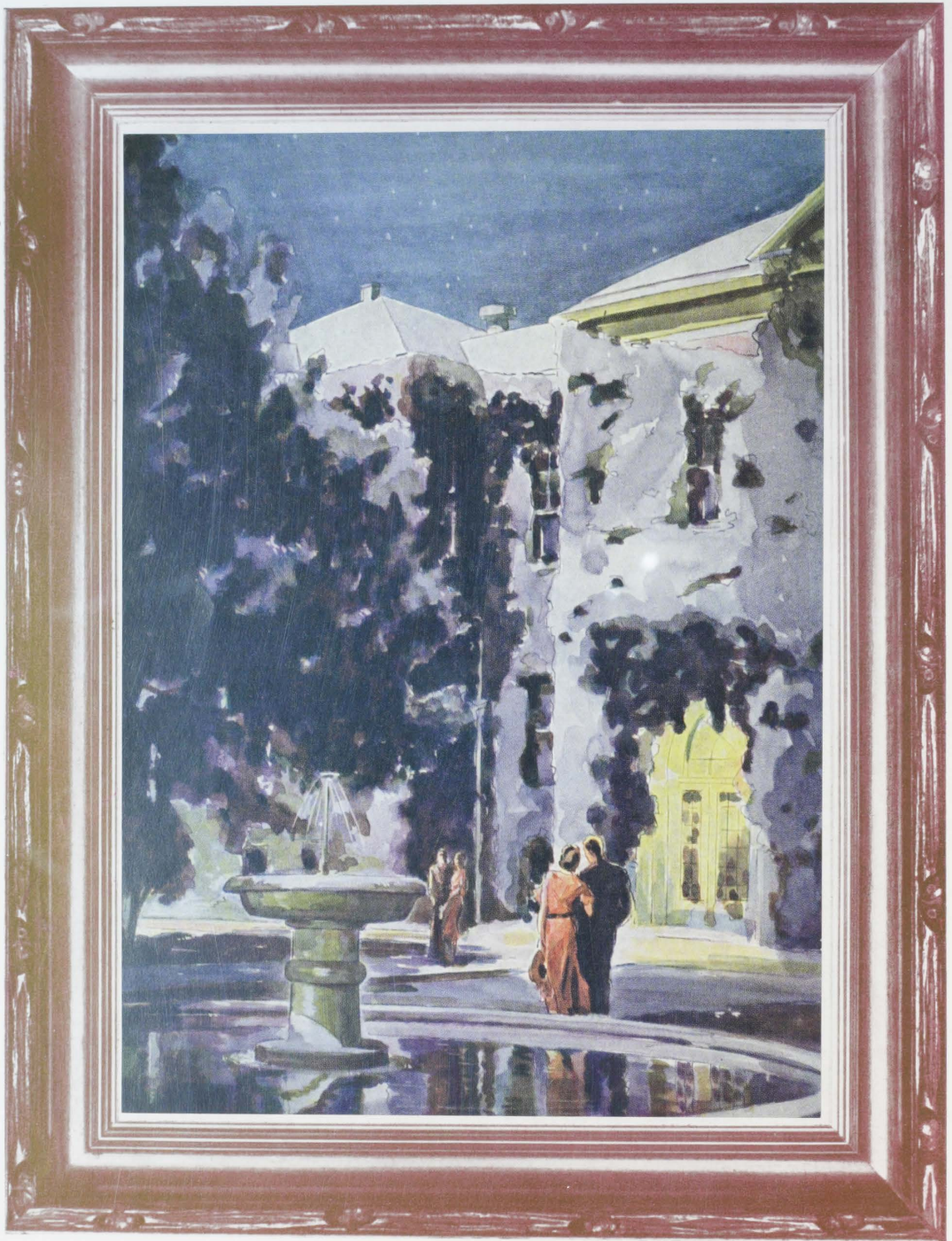
FORT HAYS OF TOMORROW

Fort Hays, the college of Western Kansas; may it give independent children of independent pioneers a chance to think, to live, and to grow.

With a beautiful campus always growing as the visible symbol of increasing knowledge, with the fitting of students to know themselves and their fellows, Fort Hays will become a means of transmutation of civilizations, making scorching plains the storehouse of secrets of living a life.

The wind and dirt, the sun and rain beat hard against native stones and weather them a grey. But a grey of hope and endurance and courage, not one of defeat and meek acceptance. May we hope that the future student will be so weathered by these things: the campus, the permutation of ideals and ideas of teachers and books, the stimulus of kindred minds—each a step toward the goal.





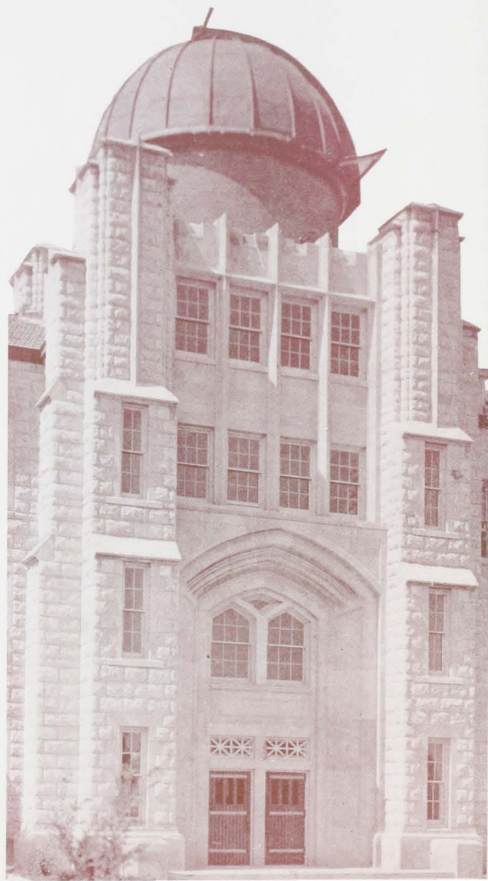
F O R T H A Y S O F T O D A Y

FORSYTH LIBRARY





SCIENCE HALL



THE OBSERVATORY



PICKEN HALL AND THE WOMAN'S BUILDING

THE COLISEUM

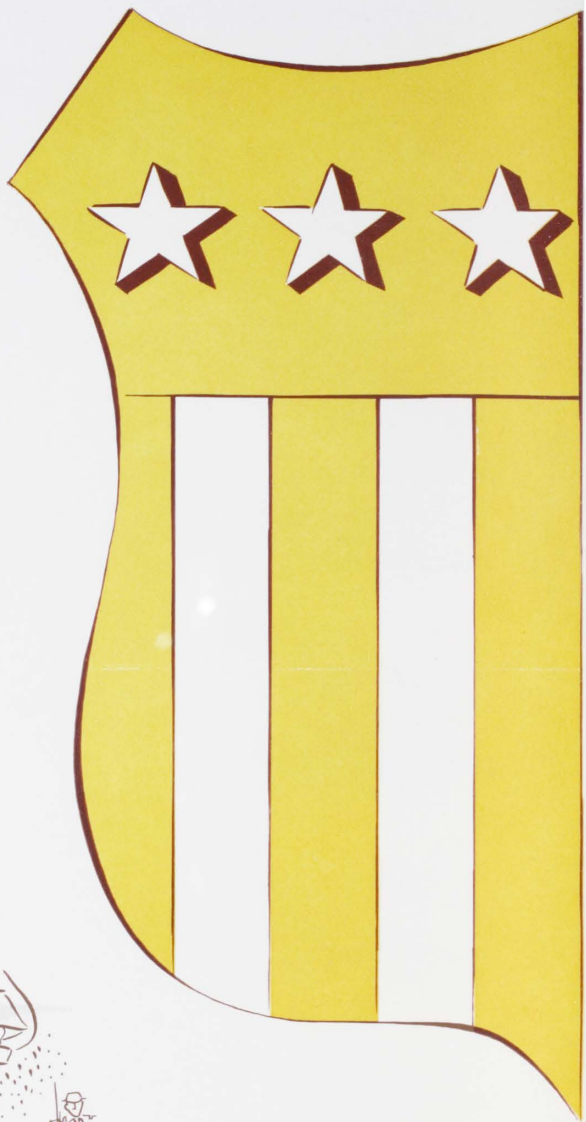




IT IS with a great deal of pleasure that we dedicate this book to a man who has served Western Kansas as an educator for many years. In recognition of this long and honored service, we dedicate the 1936 Reveille to a man who is an able teacher, a true friend, and a loyal supporter of the school and one who has given a life of service, ideals, and ability to students with a firmness yet kindness rarely found . . . Professor Robert Lincoln Parker, B.L., B.S., A.M.

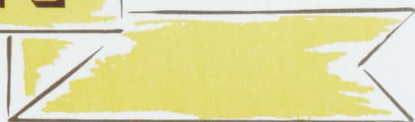
DEDICATION

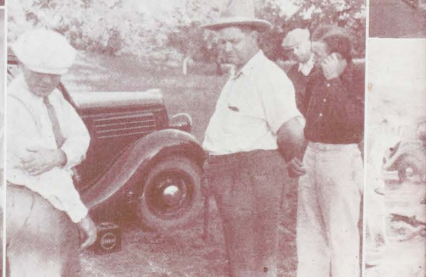
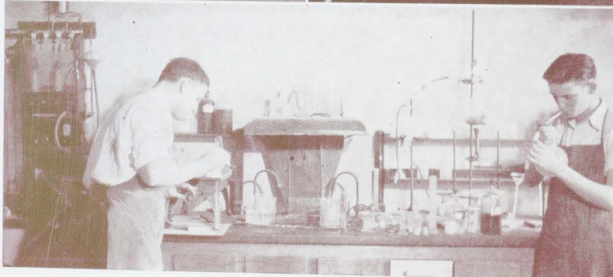
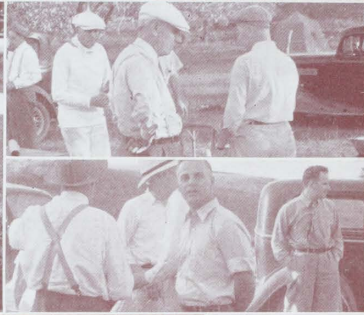






STRATEGY







THE SCHOOL

The library force . . . how we'd miss 'em . . . Oh Doctor . . . See anything, Harvey? . . . Aren't they dignified? . . . The faculty relaxes, four times . . . Margaret and Manetta . . . The superintendent of the musical zoo . . . Mouse minders . . . The faculty relaxes, five times . . . The big boss . . . Dean Elizabeth Jane Agnew . . . Faculty relaxes, six times . . . Charlotte, Shirley Maye, and Clinton . . . Boys will be boys . . . Faculty still relaxing, three more times.

P. S. The girl whose picture is on page 15 is Celeste Lowrey and not Emma Louise Havemann and don't ask the editor.





CLARENCE EDMUND RARICK, A.B., Ed.D.

C. E. RARICK became president of the Fort Hays Kansas State College on November 30, 1934, following in the footsteps of the late William A. Lewis. During his period of administration, President Rarick has won the respect and admiration of students and faculty members alike. His ability as an executive, his fine personality and his undaunted vision give assurance of a bigger and better college. "We have only begun," is Dr. Rarick's attitude in regard to the college We offer our felicitations to the man who has so successfully completed his first full year as head of this institution.



FACULTY

FLOYD B. LEE, A.B., A.M., Sc.D.
Dean of the Faculty.
 Kansas State Teachers College, Emporia;
 University of Kansas; College of Emporia.



FRED W. ALBERTSON, B.S., A.M.
Associate Professor of Agriculture.
 Fort Hays Kansas State College; University of
 Missouri; University of Nebraska.

ELIZABETH BARBOUR, Ph. B., A.M.
Instructor in Physical Education for Women.
 University of Chicago.



MARY E. BARRETT, A.B., B.S. in L.S.
Reference Librarian.
 Washburn College; University of Illinois.

ARTHUR W. BARTON, A.B., Ph.C., Ph.D.
Professor of Botany.
 University of Washington; Northwestern Uni-
 versity; University of Chicago.



WILLIAM BEARLEY, B.S. in Educ.
Assistant Coach and Instructor in Physical Education.
 Texas Technology College; Fort Hays Kansas
 State College.

PAUL B. BECKHELM, B.M., B.S.
Instructor in Piano and Music Theory; Men's Glee Club.
 American Conservatory of Music; Northwestern
 University; Fort Hays Kansas State College.



CHARLES H. BROOKS, B.S., M.S.
Instructor of Correspondence Study Department of Latin.
 Fort Hays Kansas State College; Kansas State
 Teachers College, Emporia; Kansas State College
 of Agriculture and Applied Science.

R. U. BROOKS, B.S. in Arch. Eng., M.S. in Arch. Eng.
*Superintendent of Buildings and Instructor in Mechanical
 Drawing.*
 Kansas State College of Agriculture and Applied
 Science.

FACULTY



ELIZABETH J. AGNEW, B.S.
Dean of Women.
 Kansas State College of Agriculture and Applied
 Science; Columbia University.

HUGH BURNETT, A.B., A.M.
*Acting Director of Extension and Instructor in Political
 Science.*
 Fort Hays Kansas State College; University of
 Kansas; University of Colorado.

WILBERT CHAPPELL, B.S., A.M., Ph.D.
Instructor in Chemistry.
 University of Kansas; Ottawa University.

EDWARD E. COLYER, A.B., A.M.
Professor of Mathematics.
 Cooper College; University of Kansas; University
 of Colorado; University of Nebraska.

PEARL G. CRUISE, A.B., A.M.
Assistant Supervisor of Teacher Training.
 Iowa State Teachers College; University of Iowa.

STANDLEE V. DALTON, A.B., M.S.
Instructor in Biological Science and Ass't to Dean of Men.
 Ozark Wesleyan; Southwest Missouri State
 Teachers College; Baker University; University
 of Illinois.

EDWIN DAVIS, B.S., A.M.
Professor of Industrial Arts.
 Kansas State College of Agriculture and Applied
 Science; Fort Hays Kansas State College; Univer-
 sity of Minnesota.

GAYNELLE DAVIS, B.S. in Educ., A.M.
Ass't Supervisor of Teacher Training.
 Fort Hays Kansas State College; Columbia
 University.

MARGARET H. DRESHER, A.B., B.S. in L.S.
Library Cataloguer.
 McPherson College; University of Illinois.



FACULTY

ROB ROY IAN MACGREGOR, A.B., A.M., Ph.D.,
 D. Anthropol.
*Professor of English and Chairman of the Graduate
 Division.*
 Otago University of New Zealand; University of
 Jena; Cambridge University.



VIRGIL V. EDMONDS, A.B., A.M.
Instructor in Band and English.
 William Jewell; Missouri State Teachers College,
 Warrensburg; University of Chicago; University
 of Iowa; Kansas City Teachers College; Horner
 Conservatory.

LUCILLE FELTEN, B.S.
Instructor in Piano.
 Fort Hays Kansas State College; Alexander Raab;
 Caruthers Normal School of Piano, Chicago.



EMMA GOLDEN, B.S., A.M.
*Instructor in German and Ass't Supervisor of Teacher
 Training.*
 State Teachers College, Ellendale, N.D.; Univer-
 sity of Minnesota.

MAUDE I. GORHAM, Ph.B., A.M.
Instructor in Psychology.
 University of Chicago; Columbia University.



PAUL B. GROSS, B.S.
Director of Athletics.
*Basketball Coach and Instructor in Physical Education
 for Men.*
 Fort Hays Kansas State College; University of
 Illinois; University of Michigan; Northwestern
 University.

MARGARET H. HAGGART, B.S., A.M.
Professor of Home Economics.
 Kansas State College of Agriculture and Applied
 Science; University of Chicago; Columbia
 University.



MANETTA J. HEIDMAN, B.S., M.S.
Instructor in Textiles and Clothing.
 Des Moines College; Iowa State College.

FRANCES HENRY, R.N., A.B.
Dispensing Nurse and Instructor in Health.
 University of Oklahoma; Oklahoma College for
 Women.

FACULTY



CHARLES FISHER WIEST, A.B., D.D.
Professor of Philosophy and Chairman of the Humanities Division.
 Gettysburg College; Lutheran Theological Seminary; Midland College; Yale University.

THELMA E. HRUZA, A.B., M.S.
Instructor in English.
 Fort Hays Kansas State College.

MODESTO JACOBINI, A.B., A.M.
Professor of Modern Languages.
 Liceo Taranto, Italy; American International College; Yale University; New York University; University of Chicago; National University of Mexico.

GEORGE A. KELLY, B.A., A.M., B.Ed., Ph.D.
Assistant Professor in Psychology.
 Friends University; Park College; University of Kansas; University of Minnesota; University of Edinburgh, Scotland; University of Iowa.

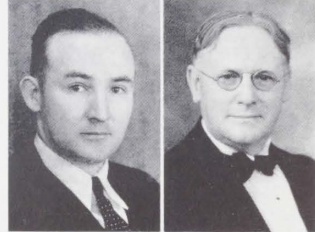
HENRY EDWARD MALLOY, B.S.
Professor and Director of Music.
 Kansas State Teachers College, Emporia; Fort Hays Kansas State College; Voice under George Hamlin, Chicago; D. O. Jones, Emporia; Ella Bachus-Behr, Berlin; Hinshaw of Metropolitan Opera, New York; George Ferguson, Berlin; P. Kirk Towns, Berlin.

Carl J. Malmberg, B.S., A.M.
Instructor in Orchestra and Public School Music.
 Fort Hays Kansas State College; American Conservatory, Chicago; Columbia University.

ERNEST R. MCCARTNEY, A.B., A.M., Ph.D.
Professor of Economics.
 Monmouth College; University of Wisconsin; University of Nebraska.

ROSELLA M. MCCARROLL, B.S., A.M.
Ass't Supervisor of Teacher Training.
 Fort Hays Kansas State College; Columbia University.

MYRTA E. MCGINNIS, A.B., A.M., Ph.D.
Assistant Professor of English.
 Kansas State Teachers College, Emporia; University of Missouri; Yale University.



FACULTY

LYMAN DWIGHT WOOSTER, A.B., Ph.M., Ph.D.
*Professor of Zoology and Chairman of the Biological
 Science Division.*
 Kansas State Teachers College, Emporia; University
 of Wisconsin; Leland Stanford University.



ROBERT T. McGRATH, Ph.B., Ph.M., Ph.D.
Professor and Director of Education.
 State Teachers College, De Kalb, Illinois; University
 of Wisconsin; Illinois State Normal University.

MAUDE McMINDES, B.S., M.S.
Director and Supervisor of Teacher Training.
 Fort Hays Kansas State College; University of
 Kansas; Columbia University.



GENEVA T. MILLETT, B.S. in P.E., M.A.
Instructor in Physical Education for Women.
 University of Tennessee; University of Iowa.

EARL F. MORRIS, B.S. in Ed., B.S. in Med., M.D.
*Director of Health and Physical Education and Professor
 of Public Health.*
 Kirksville State Teachers College; St. Louis Uni-
 versity; University of Missouri.



WILLIAM D. MORELAND, A.B., M.A., Ph.D.
Assistant Professor of Political Science.
 University of Iowa.

MARY MAE PAUL, B.S., A.M.
Assistant Supervisor of Teacher Training.
 Fort Hays Kansas State College; Columbia
 University.



GOLDIE PROFFITT, B.S. in Educ., A.M. in Educ.
Assistant Supervisor of Teacher Training.
 Fort Hays Kansas State College; University of
 Arizona.

HOMER B. REED, A.B., A.M., Ph.D.
Professor of Psychology.
 Indiana University; University of Chicago;
 Columbia University.

FACULTY



ROY RANKIN, A.B., A.M.
Professor of Chemistry and Chairman of the Physical Science Division.
 Kansas State Teachers College, Emporia; University of Kansas; Harvard University; University of Colorado.

JAMES EDWARD ROUSE, B.S., M.S.
Professor of Agriculture.
 Missouri State Teachers College, Kirksville; University of Wisconsin; Kansas State College of Agriculture and Applied Science.

L. J. SMUTZ, B.S.A.
Farm Superintendent.
 Kansas State College of Agriculture and Applied Science.

CLARA SNYDER, B.S., A.M.
Instructor in Business Administration.
 Kansas State Teachers College, Emporia; Denver University; Colorado State College of Education.

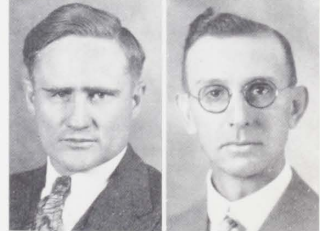
JAMES R. START, B.S., A.M.
Assistant Professor of English.
 Fort Hays Kansas State College; Northwestern University; Columbia University.

J. M. STRANGE, B.F.A.
Instructor in Art.
 Oklahoma Agriculture and Mechanical College; University of Oklahoma.

FLOYD B. STREETER, A.B., B.S., A.M., Litt.D.
Professor and Librarian.
 University of Kansas; University of Michigan; Simmons College.

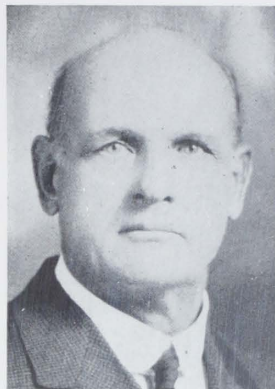
LEONARD W. THOMPSON, B.S. in Educ., B.S. in C., M.B.A.
Assistant Professor in Business Administration.
 Kansas State Teachers College, Emporia; University of Kansas.

MABEL VANDIVER, B.F.A., A.M.
Professor of Applied Art.
 Art Institute, Chicago; Art Academy, Chicago; Oklahoma University; George Peabody College, Nashville.



FACULTY

ROBERT LINCOLN PARKER, B.L., B.S., A.M.
*Professor of History and Chairman of the Social Science
 Division.*
 Ottawa University; University of Chicago.



WILLIS H. WALKER, A.B., A.M., Ph.D.
Assistant Professor of History.
 Iowa University.

WALTER G. WARNOCK, B.A., A.M., Ph.D.
Assistant Professor in Mathematics.
 Harvard University; University of Illinois.



THORNTON W. WELLS, B.S., M.S.
Instructor in English.
 Fort Hays Kansas State College; Kansas State
 College of Agriculture and Applied Science.

THELMA WILES, A.B., A.B. in Lib. Sc.
Documents Librarian.
 Penn College; University of Michigan.

MARY E. WILLIAMS, A.B., A.B. in L.S.
Supervisor of Circulation.
 University of Wichita; University of Michigan.



IRVINE WILSON, B.S.
Bursar.
 Fort Hays Kansas State College; Wayne State
 Teachers College, Wayne, Nebraska.

JAMES J. YEAGER, B.S.
Instructor in Physical Education and Coach.
 Kansas State College of Agriculture and Applied
 Science; University of Iowa.



HARVEY A. ZINSZER, A.B., A.M., Ph.D.
Professor of Physics and Astronomy.
 Lehigh University; Indiana University.

RAYMOND L. WELTY, B.S. in Educ., A.M., Ph.D.
Instructor in History. (Picture not here.)
 Kansas State Teachers College, Emporia; Fort
 Hays Kansas State College; George Washington
 University; University of Colorado; University
 of Iowa.

GRADUATE STUDENTS



NADYNE CALVERT..... Hays, Kansas
A.B. Fort Hays Kansas State College.
Music.

DREW DOBOSH... Monessen, Pennsylvania
Ph.B., University of Chicago.
B. Art Ed., Art Institute of Chicago.
Art Education.

VERNE LIPPERT..... Bison, Kansas
A.B., B.S. in Educ., Fort Hays Kansas
State College.
Physics.



BETTY MARTINSON..... Wichita, Kansas
A.B., Friends University.
Psychology.

N. G. MOODY..... Beeler, Kansas
B.S. in Educ., Fort Hays Kansas State
College.
Educ. Administration.

WALTER PARK..... Wichita, Kansas
B.S. in Educ., Fort Hays Kansas State
College.
History.



EVERETT RUNYON..... Hays, Kansas
A.B., B.S. in Educ., Fort Hays Kansas
State College.
Chemistry.

ADRAN SCHEER..... Hays, Kansas
B.S. in Educ., Fort Hays Kansas State
College.
Education.

ROBERT SOLOMON..... Hays, Kansas
B.S. in Educ., Fort Hays Kansas State
College.
Botany.

CALVERT
MARTINSON
RUNYON

DOBOSH
MOODY
SCHERER

LIPPERT
PARK
SOLOMON



FRANK CUNNINGHAM..... Lebanon, Kansas
A.B., Kansas Wesleyan.
History.

MARJORIE GAMET RAISH..... Hays, Kansas
A.B., University of Kansas.
English.

LLOYD CUNNINGHAM..... Hays, Kansas
B.S. in Educ., Fort Hays Kansas State College.
Botany.

JOHN M. STRANGE..... Hays, Kansas
B.F.A. in Painting, Oklahoma University.
Art Education.

ORVIS GROUT..... Hays, Kansas
A.B. Fort Hays Kansas State College.
Dramatics.

JASPER C. WITTER..... Plains, Kansas
A.B., Fort Hays Kansas State College.
Political Science.

PAUL KING..... Hays, Kansas
A.B., Fort Hays Kansas State College.
English.

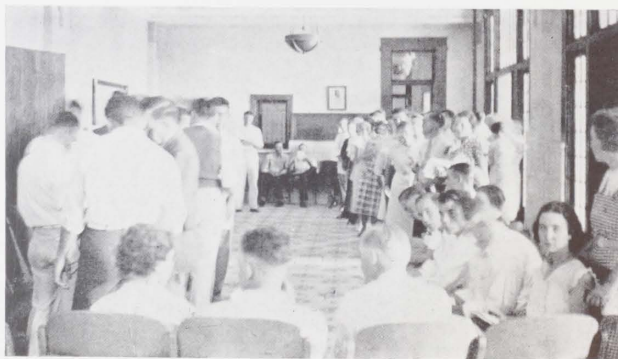
IRVINE WILSON..... Hays, Kansas
B.S. in Educ., Wayne State Teachers College.
Economics.

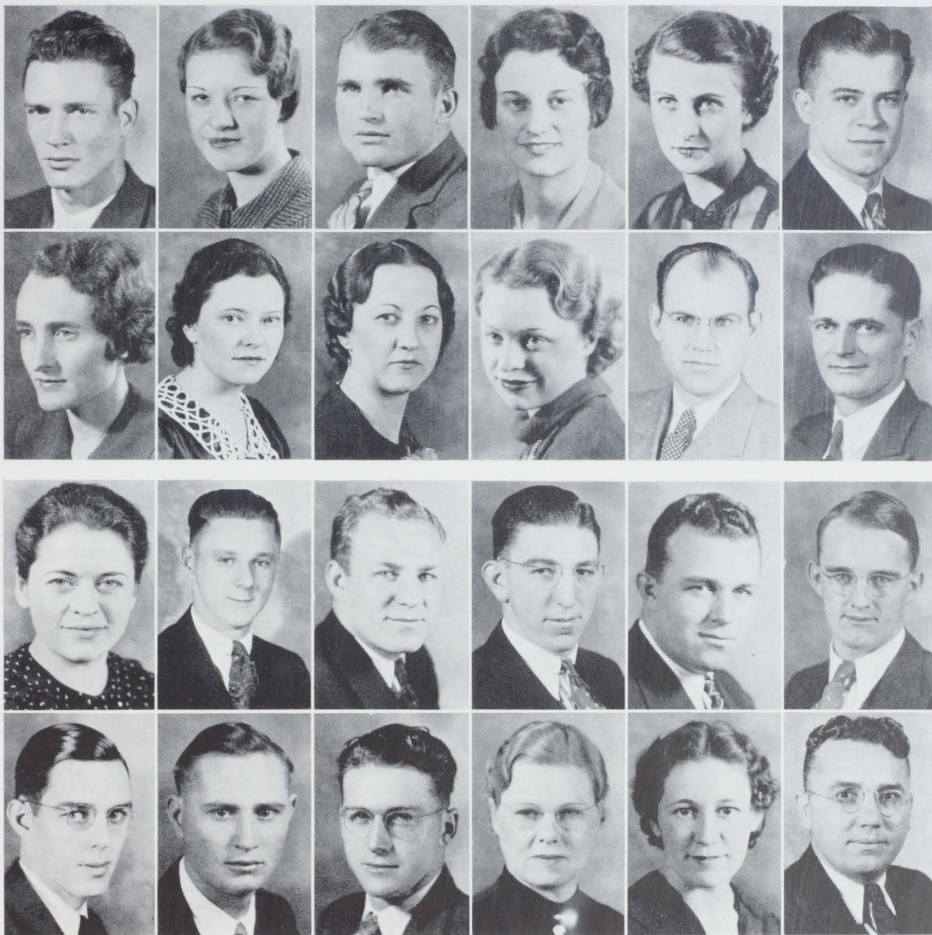
H. R. POLLOCK..... Hays, Kansas
B.S. in Agriculture, University of Illinois.
Social Science.

HUGH FARQUHARSON..... Lincoln, Kansas
B.S. in Educ., Fort Hays Kansas State College.
Education.

SENIORS

- ROBERT BARTHOLIC Hays, Kansas
A.B., Mathematics.
 Band, 1, 2, 3, 4.
- IRENE BEAN Waldo, Kansas
B.S. in Educ., Commerce.
 W.A.A., 1, 2, 3, 4; Y.W.C.A., 1, 2, 3, 4.
- EDWARD BENDER Waldo, Kansas
B.S. in Educ., Industrial Arts.
 Kappa Beta Tau, president, 3, 4; Inter-Fraternal Council, 3, 4; K Club, 1, 2, 3, 4; vice-president, 4; Football, 1, 2, 3, 4.
- HELEN FRANCES BICE Hays, Kansas
B.S., Physical Education.
 Delta Sigma Epsilon; Glee Club, 1, 2, 3; Duck Club, 1, 2, 3; Pi Epsilon Pi, 1, 2, 3, 4; president, 2; W.A.A., 1, 2, 3, 4; vice-president, 3; Orchesus, 2, 3, 4; Opera "Martha," 3; "Lucia," 2; All-round Girl, 2; Major Club, 1, 2; Popularity Queen, 3.
- ELAINE BITTER LaCrosse, Kansas
B.S. in Educ., Home Economics.
 Delta Sigma Epsilon, vice-president, 3, 4; Senior Class secretary-treasurer; Pi Epsilon Pi, 1, 2, 3, 4; Home Economics Club, 1, 2, 3, 4; Glee Club, 2; Pan-Hellenic, 2, 3; Junior Class Play; Little Theater, 4.
- J. T. BROCK, JR. Hays, Kansas
A.B., English.
 Glee Club, 1, 2, 3; Parliamentary Law Club, 2; Opera, "Martha," 2; Aida, 3.
- MAXINE BRUMFIELD Jetmore, Kansas
B.S. in Educ., English.
 Duck Club, 3, 4; Y.W.C.A., 2, 3, 4; vice-president, 4; English Club, 2, 3.
- MYRTLE BURDITT Coldwater, Kansas
B.S. in Educ., Home Economics.
 Kappi Phi; Home Economics Club, 3, 4; Art Club, 1; Chorus, 3.
- EDITH CARPENTER Macksville, Kansas
B.S. in Educ., English.
 Friends University; Santa Ana Junior College.
- ALTA CLINE Oakley, Kansas
B.S. in Educ., English.
 Pi Kappa Sigma; English Club, 1, 2; Chorus, 2, 3.
- CARL CLINESMITH Buffalo, Kansas
B.S. in Educ., Music.
 Kansas State Teachers College, 1, 2, 3; Pi Kappa Delta; Orchestra, 4; Glee Club, 4; Y.M.C.A., 4; Band, Librarian, 4.
- JACK CRONK Covert, Kansas
B.S. in Educ., Social Science.
 Y.M.C.A., 2, 3, 4; Intra-murals.
- ELVA CURRENCE Nekoma, Kansas
B.S., Home Economics.
 Kappa Phi; Home Economics Club, 2, 3, 4; president, 4; Y.W.C.A., 1, 2.
- KENNETH DAVENPORT Hoxie, Kansas
A.B., Literature.
 English Club; Leader; Y.M.C.A.; Quill Club; Seventh Cavalry; Little Theater; Secretary-Treasurer, Junior Class.
- FRANK DREILING Hays, Kansas
B.S. in Educ., Physical Education.
 Football, 1, 2, 3, 4; K Club, 1, 2, 3, 4; Track, 1.
- VERNAL DUNCAN Wakeeney, Kansas
B.S. in Educ., Mathematics.
 Sigma Tau Gamma; K Club, 1, 2, 3, 4; Track, 1, 2, 3, 4.
- JOHN DUNN Plains, Kansas
A.B., Chemistry.
 Phi Sigma Epsilon; St. Joseph's College; Band, Orchestra.
- RALPH EIKELBERGER Scott City, Kansas
A.B. Mathematics.
 Y.M.C.A., 1, 2, 3, 4; Cabinet, 2.
- ELLIOTT GIBBENS Dodge City, Kansas
B.S. in Educ., Physics.
 Kappa Beta Tau; Delta Epsilon; Science Club, 2; Commercial Club, 1; Track, 4.
- MAURICE GRANT Scott City, Kansas
A.B., Mathematics.
 Y.M.C.A., 1, 2, 3, 4; Cabinet, 2, 3, 4; Engineer's Club, 4.
- GEORGE GRUVER Hays, Kansas
B.S. in Educ., Industrial Arts.
 Football, 2, 3, 4; K Club, 2, 3, 4; Y.M.C.A., 2, 3, 4; president, 4; Chairman Student Assembly, 4; Seventh Cavalry, 4; Student Council, 4.
- LEOLA GUSTAFSON Winona, Kansas
B.S., Intermediate Education.
 Pi Kappa Sigma, president, 4; Pi Epsilon Pi, 4; Pan-Hellenic, 4; English Club, 3; Home Economics Club, 1.
- EMMA LOUISE HAVEMANN Hays, Kansas
B.S. in Educ., Applied Art.
 Sigma Sigma Sigma; president, 4; Pi Epsilon Pi, 1, 3, president, 3; Glee Club, 1, 3; Art Club, 3, 4, president, 4; Student Assembly, secretary-treasurer, 3; Orchesus, 3, 4; Operas, "Faust," "Aida," Pan-Hellenic, 3, 4.
- E. E. HIRSCHLER Hanston, Kansas
B.S. in Educ., English.
 Bethel College; McPherson College; Y.M.C.A., 4.





BARTHOLIC
BRUMFIELD
CURRENCE
GIBBONS

BEAN
BURDITT
DAVENPORT
GRANT

BENDER
CARPENTER
DREILING
GRÜVER

BICE
CLINE
DUNCAN
GUSTAFSON

BITTER
CLINESMITH
DUNN
HAVEMANN

BROCK
CRONK
EIKELBERGER
HIRSCHLER



HOKE
 LOUDERBAUGH
 McKEE
 NELSON

HOLM
 LAVERY
 McKENNA
 NICHOLAS

HUBERT
 LISS
 McROBB
 OSHANT

JONES
 LOFLIN
 MEIER
 PANKASKIE

KAHLER
 MARSHALL
 MEYER
 PERKINS

KELLY
 McCANDLESS
 MORRISSETTE
 RAFF

SENIORS

- ERNEST HOKE.....Gorham, Kansas
B.S. in Educ., Music.
 Y.M.C.A., 1, 2, 3, 4, Cabinet, 3; Orchestra, 1, 2, 3, 4; Band, 1, 2, 3, 4.
- FLORIAN HOLM.....Hays, Kansas
B.S. in Educ., Physical Education.
 Phi Sigma Epsilon, vice-president, 4; Football, 1, 2, 3, 4; K Club, 3, 4.
- MARVIN HUBERT.....Ingalls, Kansas
B.S. in Educ., Social Science.
 Garden City Junior College; Basketball, 1, 2, 3; Student Council, 2; Delta Psi Omega, 1, 2; Spanish Athletic Club, 1, 2; Y.M.C.A., 3, 4.
- CASEY JONES.....Hill City, Kansas
A.B., Social Science.
 Sigma Tau Gamma; Science Club, 1; Student Council, 1; Parliamentary Law Club, 1, 2, 3; Vice-chairman Student Assembly, 2; Professional Club, 2, 3.
- CLARENCE KAHLER.....Holyrood, Kansas
B.S. in Educ., Physical Education.
 Sigma Tau Gamma, president, 4; K Club, 1, 2, 3, 4; Track, 1, 2, 3, 4; Pep Club, 3; Inter-Fraternal Council, president, 4; Leader Staff, 3, 4; Little Theater, 3, 4; Student Council, 4; Basketball.
- THELMA KELLY.....Phillipsburg, Kansas
B.S. in Educ., English.
 Sigma Sigma Sigma, president, 4; Duck Club, 1, 2; English Club, 2; W.A.A., 1; Intra-murals, 1, 2; Orchesus, 2; Leader Staff, 3, 4; Quill Club, 3, 4; Art Club, 3, 4; Little Theater, 4; Crippled Children's Education.
- ESTHER LOUDERBAUGH.....Kanopolis, Kansas
B.S. in Educ., English.
 Kappa Phi; Y.W.C.A., 1, 2, 3, 4, president, 4, Cabinet, 2, 3, 4; Chorus, 1, 2, 3, 4; Religious Week Chairman, 3; Estes Park Student Delegate, 3; Sponsor of G. R. Training School, 2; "Cat O' Nine Tails," 3.
- PHOEBE LAVERY.....Cawker City, Kansas
B.S. in Educ., Commerce.
 Kappa Phi; Y.W.C.A., 2, 3; Commercial Club, 2, 3; Social Science Club, 3.
- ELMER LISS.....Lincoln, Kansas
B.S. in Educ., Agriculture.
 Y.M.C.A., 1, 2, 3; Science Club, 1; Commercial Club, 1; Parliamentary Law Club, 2.
- ESTHER LOFLIN.....Ogallah, Kansas
B.S. in Educ., Home Economics.
 Theta Sigma Upsilon; Home Economics Club, 1, 2, 3, 4, president, 3; Y.W.C.A., 3, 4.
- MILDRED MARSHALL.....Stockton, Kansas
B.S. in Educ., English.
 Delta Sigma Epsilon, secretary-treasurer 2, president, 4; Pan-Hellenic, president, 4; Glee Club, 1; Y.W.C.A., 1; English Club, 1, 2, 3.

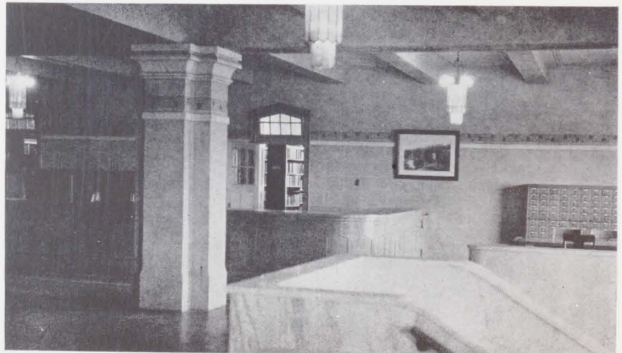
- BOYD McCANDLESS.....St. John, Kansas
A.B., English and Psychology.
 Sigma Tau Gamma, president, 3; Quill Club, 2, 3, president, 3; Pi Kappa Delta, 2, 3; president, 3; president Sophomore Class; Student Council, 2, 3; Seventh Cavalry, vice-president, 3; Leader, 1, 2, 3, editor, 3; Reveille, 2; Y.M.C.A., 2, 3; Little Theater, 2, 3; Inter-Fraternal Council, 3.
- DENNIS MCKEE.....Hays, Kansas
B.S. in Educ., Industrial Arts.
 Phi Sigma Epsilon; Football, 1, 2, 3, 4, co-captain, 4; K Club, 1, 2, 3, 4, president, 4.
- MRS. ETHEL MCKENNA.....Hays, Kansas
B.S., Music.
 Washburn College; Director, Custer Hall; Chorus, 2, 3, 4.
- FLORENCE McROBB.....Rexford, Kansas
B.S., Business Administration.
 Sigma Sigma Sigma; Pi Epsilon Pi.
- ELNORA MEIER.....Quinter, Kansas
B.S. in Educ., Economics and Business Administration.
 Y.W.C.A., 2, 3, 4; Commercial Club, 2; Parliamentary Law Club, 4.
- CHESTER MEYER.....Woodston, Kansas
B.S. Economics and Business Administration.
 Glee Club, 1, 2; Chorus, 1, 2; Opera, "Martha."
- ALBERTINE MORRISSETTE.....Clifton, Kansas
B.S. in Educ., Commerce.
 W.A.A., Y.W.C.A.
- GEORGE NELSON.....Scandia, Kansas
B.S. in Educ., Agriculture.
 Y.M.C.A., 1, 2, 3, 4.
- CLARA NICHOLAS.....Hays, Kansas
B.S. in Educ., Physical Education.
 Theta Sigma Upsilon; W.A.A., 1, 2, 3, 4, president, 3; Student Council, 4; Little Theater, 4; Orchesus, 1, 2, 3, 4; Duck Club, 1, 2, 3, 4; Reveille editor, 3; "Cat o' Nine Tails," 3; Ballet, "Lucia Di Lammermoor," "Martha," "Faust," "Aida"; Achievement, 4.
- MARGARET OSHANT.....Hays, Kansas
B.S. in Educ., English.
 Alpha Sigma Alpha, vice-president, 3, 4; Glee Club, 1, 2, 3, 4; English Club, 1, 2; Y.W.C.A., 1; Leader Staff, 3; Quill Club, 3, 4; vice-president, Junior Class; Intra-Murals.
- LEWIS PANKASKIE.....Dresden, Kansas
B.S. in Educ., Music.
 Glee Club, 1, 2, 3, 4; Chorus, 1, 2, 3, 4; Opera, 1, 2, 3; A Cappella Choir, 4; Men's Quartet, 1; Band, 1; Little Theatre, 3, 4.
- MARGUERITE PERKINS.....Utica, Kansas
B.S. in Educ., Music.
 Sigma Alpha Iota; Orchestra, 3; Glee Club, 4; Chorus, 2; Y.W.C.A., 1, 2; Opera, "Faust."
- FRANK RAFF.....Clyde, Kansas
B.S. in Educ., Physics.
 Football, 1, 2; Science Club, 1.



BISSING
 GUTZMAN
 FINCHER

SENIORS

- ELLIS REINHARDT.....Bison, Kansas
B.S. in Educ., Economics and Business Administration.
 Phi Sigma Epsilon, vice-president, 3, secretary, 4; K Club, 3, 4; Football, 2, 3, 4; Basketball, 2, 3.
- RUTH SCHILLER.....Kirwin, Kansas
B.S. in Educ., Physical Education.
 Theta Sigma Upsilon, treasurer, 4; W.A.A., 2, 3, president, 4; Duck Club, 2, 3, 4.
- MAURICE SWANSON.....Weskan, Kansas
A.B., Social Science.
 Washburn College, 1; Orchestra, 1; Band, 1; Leader, 2, 3; Y.M.C.A., 2; Pi Epsilon Pi, 4.
- HERMAN SCHWARTZKOPF.....Alexander, Kansas
B.S. in Educ., Health.
 Phi Mu Alpha; Seventh Cavalry, 3, 4; Basketball, 1, 2, 3, Captain, 4; Track, 1, 2, 4, Captain, 3; Junior Class president; Senior Class president; K Club, 1, 2, 3, 4; Student Council, 3, 4.
- MELBERN SMEDLEY.....Kensington, Kansas
A.B., Chemistry; B.S. in Educ.
 Compton Junior College; Phi Gamma Chi; Kappa Beta Tau; Delta Epsilon.
- WOODY REINHOLD.....St. Francis, Kansas
B.S. in Educ., Industrial Arts.
 K Club; Football, 1, 2, 3, 4.
- DELWIN CODDINGTON.....Palco, Kansas
B.S. in Educ., Agriculture.
 Kappa Beta Tau; Engineer's Club, 1.
- ELMER SPOMER.....Alexander, Kansas
A.B., Business Administration.
 Sigma Tau Gamma; Glee Club, 1, 2.
- CLAUDE SUMMERS.....Ellinwood, Kansas
A.B., Economics.
 Asbury College; Phi Mu Alpha, treasurer, 4; Glee Club, 1, 2, 3, president, 4; Junior play; Little Theater, 4.
- LOWELL TRULL.....Kansas City, Kansas
B.S. in Educ., English.
 Horner Conservatory; Phi Mu Alpha; Parliamentary Law Club, 3; Chorus, 2; Pep Club, 2.
- LOIS TRACY.....Smith Center, Kansas
B.S. in Educ., English.
 Northeast Junior College, Kansas City; Tumbling Team, 1; English Club, 2, 3; W.A.A., 3; Y.W.C.A., 2.
- BERNICE VAN PELT.....Covert, Kansas
B.S. in Educ., English.
 Sigma Sigma Sigma; Art Club, 1, 2; English Club, 3, 4; W.A.A., 3.
- FERN VINCENT.....Englewood, Kansas
A.B., English.
 Sigma Sigma Sigma; Tigerettes, 1, 2; W.A.A., 2; English Club, 4.
- WILLIAM VOSS.....Norton, Kansas
A.B., Social Science.
 Y.M.C.A., 1, 2, 3, 4; Parliamentary Law Club, 1, 2; Junior play; Professional Club, 1.
- GILBERT WAGNER.....LaCrosse, Kansas
A.B., Mathematics.
 Y.M.C.A., 1, 2, 3, 4; Track, 1, 2, 3, 4; Engineer's Club, 1, 2, 3, 4.
- MARY LOUISE WALKER.....Hays, Kansas
A.B., English.
 Kappa Phi, 1, 2, 3, 4; Y.W.C.A., 1, 2; Quill Club, 3, 4; Leader, 2; Orchestra, 1, 2, 3, 4; Glee Club, 1, 2, 3; Reveille, 2.
- CONNIE WERTH.....Hays, Kansas
A.B., Economics.
 WALTER WALLERSTEDT.....Hays, Kansas
B.S. in Educ., English.
 Kappa Beta Tau, Sponsor, 1, 2, 3, 4; College Printer.
- MAURICE WAELDIN.....Hoisington, Kansas
B.S. in Business Administration.
 Sigma Tau Gamma; Student Council, 1, 3, 4; Homecoming King, 4; Manager State College Greenhouse; Representative, N.S.F.A., Kansas City, 4.
- MAURICE WILSON.....Hays, Kansas
B.S. in Educ., Agriculture.
 Y.M.C.A., 1, 2, 3, 4; Estes Park Student Delegate, 3; Junior Play; Professional Club, 4; Parliamentary Law Club, 4.
- EVA WOODRUFF.....Englewood, Kansas
B.S. in Educ., Primary Education.
 Pi Kappa Sigma, vice-president, 4; Pan-Hellenic, 4; Chorus, 1, 2, 3.
- JASPER WITTER.....Plains, Kansas
B.S. in Educ., Social Science.
 Southwestern College; Band.
- JAMES WRIGHT.....Lincoln, Kansas
A.B., Social Science.
 Garden City Junior College; Glee Club, 1, 2, 4; Quartet, 1, 2; Little Theater, 1, 2, 4; president, Student Assembly, 4.
- DOROTHY BISSING.....Hays, Kansas
B.S. in Educ., Business Administration.
 Theta Sigma Upsilon, president, 4.
- WAYNE GUTZMAN.....Kensington, Kansas
A.B., Mathematics.
 Y.M.C.A.
- SYBLE FINCHER.....Liberal, Kansas
B.S. in Educ., English.
 Christian College; Kappa Kappa Gamma; Little Theater, 4; Duck Club, 4; Pi Epsilon Pi, 4; W.A.A.





REINHARDT
 CODDINGTON
 VAN PELT
 WALLERSTEDT

SCHILLER
 SPOMER
 VINCENT
 WAELDIN

SWANSON
 SUMMERS
 VOSS
 WILSON

SCHWARTZKOPF
 SWANSON
 WAGNER
 WOODRUFF

SMEDLEY
 TRULL
 WALKER
 WITTER

REINHOLD
 TRACY
 WERTH
 WRIGHT

JUNIORS

GEORGE ADAMS, Claflin.
 VIOLA AMES, Waldo.
 PEARL ATWATER, Larned.
 ELWOOD BARTLETT, Plainville.



THERON BORDEN, Russell Springs
 MARGARET BRENTNALL, Ness City
 MYRTLE CARTER, Trousdale.
 ROY COCHRANE, Sharon Springs



RUTH CRAWFORD, Hays
 NORVAL CURRY, St. Francis
 ERNEST DEINES, Wakecey
 ISABEL DODRILL, Kanorado



WILBUR DUNCAN, Wakecey
 ADRIAN EICHMAN, Palco
 ALBERT EIKELBERGER, Scott City
 ANNE FANKHAUSER, Natoma



FRANCES FICKEN, Bison
 KATHRYN FISHER, Wilson
 ROBERT FORD, Osborne
 RUTH FRISBIE, McDonald



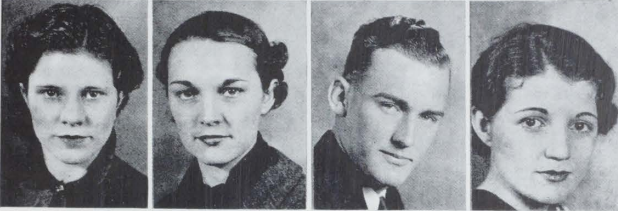
RUTH FRUSHER, Jetmore
 ANNA LOU GALLOWAY, Wakecey
 RUTH GARLOW, Hays
 GEORGE GALLOWAY, Wakecey



JUNIORS



EVELYN GARTON, Dighton
 HARLIE HAAG, Larned
 JOHN HADLEY, Alton
 MARCUS HAHN, Hays



KATHRYN HARRELL, Paradise
 MARYLEE HARVEY, Ogallah
 SHELBURNE HENDRICKS,
 Lebanon, Nebr.
 IVAMAE HENNERICH, Hays



OTTO HENNERICH, Hays
 RUTH HILDEBRAND, Fowler
 RALPH HUFFMAN, Simpson
 RITA JACOBS, Hays



MILDRED KING, Utica
 ALMA KLEINT, Herndon
 JAMES KUNTZ, Plains
 ALICE LAVERY, Cawker City



ESTEL LEONARD, Cullison
 ERMA LOWREY, Larned
 NELLA MAE MARSHALL, Stockton
 HARRY MASON, Wakeeney



WILLIAM MOG, Wilson
 CLEO MORRISSETTE, Clifton
 JANIS MULLENDORE, Oakley
 DELBERT NEWBERRY, Ingalls

JUNIORS

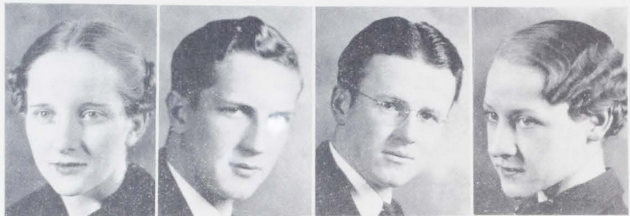
EUGENE NIEWALD, Bison
 GERALD OPDYCKE, Russell
 WILLIAM OWENS, Council Grove
 JOHN PAGE, Ellis



DERRILL PRATT, Hays
 HAZEL RABOURN, Montezuma
 ALAN RANKIN, Hays
 FRANCIS ROE, Waldo



LAVINA ROW, Larned
 KEITH SEBELIUS, Alma
 ARNOLD SCHOENTHALER, Ellis
 PAULINE SCHERER, Kansas City, Mo.



STELLA SCHLEGEL, Hays
 DONALD SCHOENFELDT, Hays
 DALE SHELLHAAS, Hays
 LYLE SHERMAN, Chase



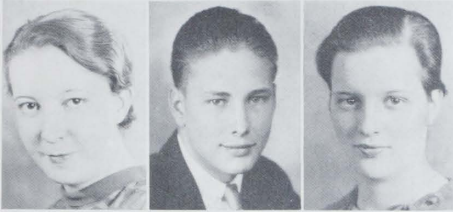
JEROME STEGMAN, Hanston
 ERVIN STEVER, Ulysses
 GAYLE STOVER, Ransom
 FREDERICK TOLAND, St. John



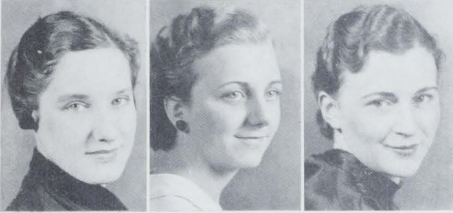
HOLLIS VAN DOREN, Hays
 MAURICE VAUGHN, LaCrosse
 OMER VOSS, Phillipsburg
 MARJORIE WALLERSTEDT, Hays



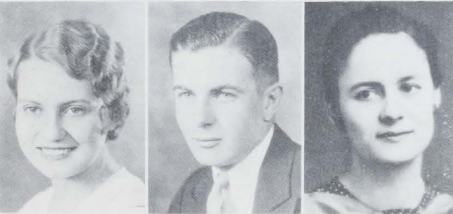
JUNIORS



MARGARET PANKASKIE, Dresden
 EUGENE HOLM, Hays
 WINNIE ADAMS, Claflin



MABEL ROBERTSON, Stockton
 LOIS MEYER, Hays
 OPAL EMMONS, Lenora



MARVELLA SCHRIDDE, Great Bend
 CLARENCE ISBELL, Bennington
 ISABEL BARKER, Beloit



VERA SPRINGFELDT, Lorraine
 LUCILLE LEAVELL, Allen
 DON HILDEBRAND, Fowler



HENRY UPPENDAH, Dighton
 CARRIE SEUSER, LaCrosse
 ELAINE WISE, Dighton



JOHN WILLCOXON, Oberlin
 TILLIE YOUNG, Esbon

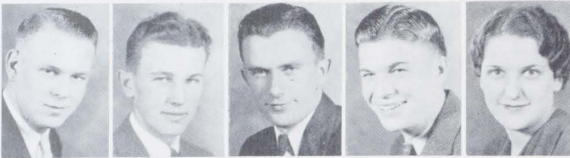
SOPHOMORES



LESTER ADAMS, Belpre
CLAIR ANDERSON, Bird City
CHARLES BAHL, Hays
RUTH BAKER-HINES, Hays
HELEN BEAM, Oakley



HOLLIS BEEN, Shallow Water
HERBERT BENDER, Waldo
KATHRYN BODMER, Natoma
RICHARD BRACKEN, Long Island
WESLEY BURFORD, Fowler



CURTIS BURGAN, Hoisington
GORDON CASAD, Stockton
KARL CARSON, Scott City
RICHARD CHISM, Sharon Springs
LENORA COATES, Plains



BASIL COLE, Lebanon
WILMA CORZINE, Garfield
LEROY CROSS, Sylvan Grove
CHARLOTTE DAVIDSON, Rush Center
GAYLORD DAVIDSON, Belpre



DALE DUNHAM, Natoma
EDWARD DUNKEL, Bunker Hill
HOMER EVANS, Trousdale
KEITH FAIL, Little River
ARNOLD FINCH, Kinsley



VIRGIE CAMP, Wallace
CASEY COCHRAN, Hays
OTIS DICKEY, Liberal
PAUL DUNLAP, Woodston
MARGARET FLEAGLE, Garden City



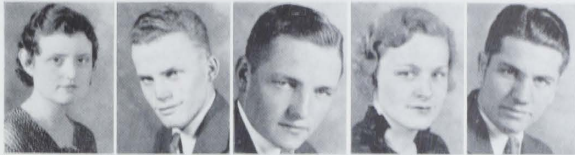
JANE FLOOD, Hays
FLOYD FOLEY, Norton
LILLIAN FOLGER, Cawker City
MILDRED FRANZ, Burdett
EUNICE GAINES, McDonald



AVERY GARD, Offerle
FAYE GARTEN, Plains
LAEL GILBERT, Plainville
OLIVE GRANT, Scott City
HAROLD GRAVES, Lincoln

SOPHOMORES

HAZELLE GRAVES, Garfield
 GAIL GRAFF, Centerview
 THOMAS GRUYER, Manning
 ANITA HAAG, Larned
 PETER HAAS, Ness City



FRANCES HANSON, Ogallah
 VERNA RUTH HARRIS, Colby
 LOIS HEDGE, Hoxie
 FRANCIS HULL, Woodston
 LEE HULL, Woodston



MERLE HUMPHREY, Arnold
 RUFUS JAMISON, Quinter
 GUWENDOLA JOHNSON, Spearville
 JAMES JONES, Penalosa
 THELMA KILLIAN, Arapahoe, Colo.



COLVIN KINDSCHI, Liberal
 CATHERINE LAND, Belpre
 ARTHUR LEAS, Liberal
 JACK LECUYER, Ellis
 MARTHA BLEW LINE, Larned



NAYDNE LIX-LONG, Norton
 CLARENCE LOWRY, Zurich
 VELMA MACKAY, Garfield
 ETHEL MARTIN, Oberlin
 RUTH McADOO, Larned



ARNOLD McGRATH, Hays
 NORMA McMULLEN, Norton
 HERBERT MEULI, Elmo
 VIVIAN MECKEL, Medicine Lodge
 MARGARET MULLEN, Debsboro



CLINTON MEYER, Woodston
 MINTIE MEREDITH, Larned
 JOYCE MILLER, Greensburg
 CHESTER MITCHELL, Montezuma
 DeLOYD MITCHELL, Belpre



EUGENE MOON, Liberal
 JOE MOSS, Sharon Springs
 MILDRED MURRAY, Hoisington
 GLADYS NICHOL, Logan
 JERALDINE NEDROW, Macksville



SOPHOMORES



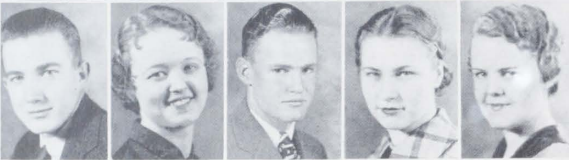
JOSEPHINE OWENS, Hays
 SAM PAINTER, Healy
 ALBERTA PAGE, Hays
 RICHARD PARKER, Long Island
 MAURICE PETERS, Pawnee Rock



LOUISE PETERSON, Lindsborg
 HUGO PFORTMILLER, Natoma
 LAWRENCE PFORTMILLER, Natoma
 RUTH POLSON, Rozel
 LOWELL POSTMA, Jennings



ESTHER RAMSEY, Bucklin
 HAROLD RANDALL, Jennings
 CARMEN REINHARDT, Hoisington
 BROOKS RICKARD, Medicine Lodge
 HERMAN ROHRS, Oakley



REX SCHWEIN, Ulysses
 FRANCES SCRANTON, LaCrosse
 HERBERT SEYFRIT, Coldwater
 MARY SHAFFER, Everett, Wash.
 WILMA SHULL, Grigston



VAN SHAW, Bloomington
 LOIS SIMKINS, Protection
 CLIFFORD SINCLAIR, Jetmore
 RUDOLPH SKUBAL, Dresden
 LAVERN SPREIER, Rozel



DOROTHY STEHLEY, Phillipsburg
 IRVIN SUTLEY, Speed
 BURTIS TAYLOR, Hill City
 GEORGE THOMPSON, Bucklin
 ARNOLD TRITT, Hays



LEILA JAMES-TRULL, Kansas City, Mo.
 JEANNE UNDERWOOD, Hoisington
 VELMA UNRUH, Pawnee Rock
 DAVE VANGUNDY, Osborne
 ORA VIEUX, Greensburg



WILLIAM WADE, Hoxie
 JACK WARD, Hays
 NED WHITMER, Wilson
 DALE WEEMS, Lebanon
 LOU VERNE WILLIAMS, Ellis

SOPHOMORES

BETTY BROWN, Ellis
 RUBY EDISON, Greensburg
 VERNA RUTH HARRIS, Colby
 OSCAR MITCHELL, Montezuma
 CELESTE LOWREY, Larned



VERNON WAELDIN, Hoisington
 LLOYD WILLISON, Lawrence
 CLEORA WRIGHT, Cimarron
 ALBERT YALE, Grinnell



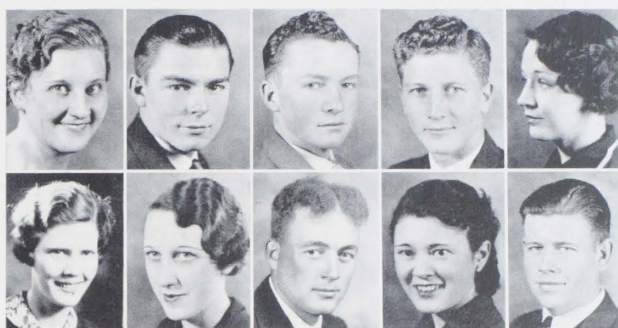
FRESHMEN

FLORENCE BOOTH, Wilmore
 DELLA BYRN, Lindsborg
 KENT COLLIER, Smith Center
 WILBUR DEYOUNG, Prairie View
 KEITH FARQUHARSON, Solomon



FLOYD GRUVER, Hays
 ARLENE HARRISON, Norton
 ERNESTINE HUBBARD, Wilmore
 GAYLE RIFE, Lyons
 PAULINE ROBERTS, Alma





FRESHMEN

ADELAIDE ABELL, Oakley
 BEATRICE ALDER, Wilmore
 AVIS ALEXANDER, Almena
 BETH ATKINS, Hays
 AGNES ATWELL, Utica

FLOYD BALMAN, Rozel
 JOHN BARKLEY, Ransom
 HELENE BARRY, Hays
 KATHRYN BELLMAN, Hays
 ELIZABETH BENTLEY, Shields

ALMA BERNDT, Herndon
 IVAN BIRRRER, Atwood
 RICHARD BISHOP, Scott City
 SHERRILL BOUCHER, Minncola
 LEONA BRAY, McAllaster

MARY KATHRYN BRENEMEN, Goodland
 NEVA BROWN, Stockton
 RALPH BROWNLEE, Pretty Prairie
 BEULAH BRUNTZEL, Rozel
 LEWIS BURFORD, Fowler

KEITH BURKE, Monument
 RUTH MARIE BUTLER, Hays
 JASPER CARDONA, Kanopolis
 CLARK CARLILE, Jetmore
 DEAN CARR, Larned

HELEN CHILDERS, Cawker City
 IDA ELEANOR CHITTENDEN, Hays
 FLORA LEE COCHRAN, Hays
 MARGARET COLE, Waldo
 DORIS CONOVER, Altou



FRESHMEN

RUTH COX, Hays
 RUSSELL DANIELS, Hays
 JOHN DAVIDSON, Rush Center
 BYRON DAVIS, Bogue
 ELBERT DE FOREST, Hays
 ARTHUR DELONG, Herndon
 FLORENCE EIKELBERGER, Scott City
 ERMA ELLIS, Lyons

BYRON EWER, Dresden
 ZELMA JANE FELTEN, Hays
 ADAH FICKEN, Bison
 PAULINE FLEMING, Plainville
 LELAND FLORA, Quinter
 LOUISE FOOS, Pawnee Rock
 BLANCHE GARLOW, Hays
 JAMES GICK, Plainville

RUBY GILPIN, Codell
 JEAN GLENN, Hays
 ESTHER GOLTL, McDonald
 ESTHER GOODEN, Garfield
 NAOMI GRIFFITH, Oberlin
 VIOLETTE GROSSARDT, Claflin
 THOMAS GRUYER, Manning
 ALLEN GUEST, Seward, Alaska

HARRY HARMS, Timken
 JOHN HARRELL, Paradise
 LILLIAN HARVEY, Belpre
 MABEL HEATON, Garfield
 MARGARET HEROLD, Colby
 ISABEL HEROLD, Colby
 MAXINE HIGLEY, Atwood
 LUCILLE HOCH, Hays

MARION HOLZMEISTER, Hays
 MARGIE HOLLAND, Liberal
 WAYNE HOWELL, Osborne
 HARRISON HONDERICK, La Crosse
 MARY HORACEK, Rush Center
 PAULINE HUXMAN, Satanta
 IZELLA JACKSON, Bayard, Nebr.
 KATHERINE JENNISON, Healy

CECIL JOHNSON, Utica
 EVELYN JONES, Plainville
 COURTNEY KEARNS, Hays
 WALTER KEATING, Lincoln
 PAULINE KELLY, Phillipsburg
 JAMES KING, Cullison
 JOHN KING, Cullison
 MINNIE KIRK, Bucklin



FRESHMEN

ROLAND KAHLER, Holyrod
 GWENDOLEN LANE, Phillipsburg
 LOTTIE LINEBAUGH, Larned
 ETHEL LISS, Lincoln
 LOUISE LOCKER, Ellis
 MARY ANNE LOCKER, Ellis
 ROBERT MALCOLM, Almaena
 CATHERINE MASTERS, Hays

JOY MCKIE, Salina
 ALICE MCKINLEY, Mullenville
 HAZEL ANN MCKINNEY, Vesper
 EMMA MCKISSICK, Minneola
 MAC McVAY, Sterling
 ERNESTINE MELLOR, Almaena
 DOROTHY JEAN MILLER, Hays
 LAWRENCE MILLER, Quinter

WAYNE MILLER, Liberal
 HARRY OLDER, Chanute
 PAUL NOEL, Grainfield
 MAXINE POSEY, Larned
 MARGARET PAXTON, Greensburg
 IONA PRATT, Hays
 LOUISE PRICE, Greensburg
 CHARLES RHOADES, Hays

MILDRED RICE, Larned
 WILMA RICHARDS, Sharon Springs
 OLDROYD RIFE, Lyons
 CARL ROGG, Bunker Hill
 CARL ROHWER, Lincoln
 LAWRENCE ROMEISER, Glasco
 MARGARET REED, Hays
 LeROY SCOPY, Atwood

HELEN GAIL SEAMON, Bird City
 GORDON SEAMON, Natoma
 HELEN SHAW, Stockton
 CLAYTON SHEDIVETZ, Towner, Colo.
 NADYNE SHYROCK, St. John
 ROSANNA SIMMINGER, Atwood
 NORMA SIMONS, Stockton
 NORMA SMEDLEY, Kensington

GERALD SMITH, Hays
 LESLIE SMITH, Kinsley
 ALICE SOLOMON, Hays
 HOWARD STEHWIEN, Claflin
 CARL STOFFER, Rexford
 ROZELLA STRICKER, Russell
 FRANK SVATOS, Pawnee Rock
 FORREST TAYLOR, Hill City



FRESHMEN

GWENDOLENE TOLAND, St. John
 RUTH TWENTER, Hays
 DALE UNDERWOOD, Hoisington
 DEAN UNRUH, Pawnee Rock

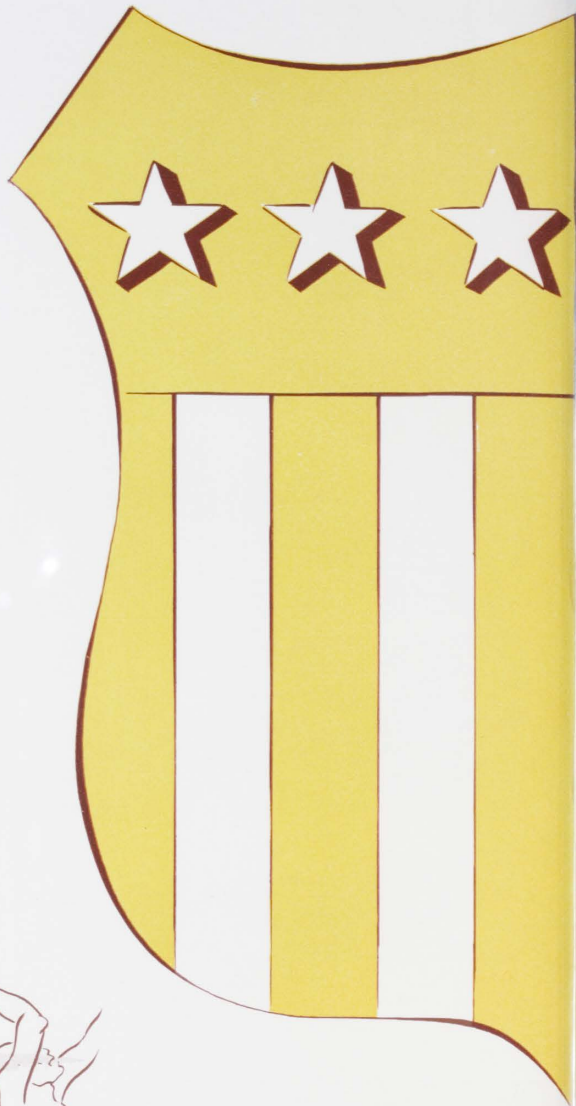
RUTH WAIT, Protection
 BETTY WARD, Hays
 HELEN WELLS, Hays
 IRIS WHITTEN, Phillipsburg

MILDRED WIEST, Hays
 LOLA WINKLER, Rozel
 IDA MAE WIRUTH, Cuba
 RUTH WISE, Dighton

EVELYN WOERNER, Wakeeney
 VIRGINIA WALTON, Hays
 LYMAN WOOSTER, Hays
 FERN WRIGHT, Simpson

PAUL WYLAND, Kirwin
 ELVA WYLEY, Kirwin
 JUNE NEWTON, Lewis
 DOROTHY SKINNER, McCracken

MILDRED YATES, Manning
 INEZ YEAGER, Natoma
 BONNIE ZIMMERMAN, Hays
 EVELYN ZINZGER, Hillside, N. J.





BATTLE







VOLUME VI FULL DAY SERVICE OF THE ASS

FORT HAYS TIGERS UPSET K-STATE ELEVEN, 3 TO 0

Big Six Champions Fall Before a Battling Hays Eleven, With Reissig's Field Goal the Winning Move.

Football Results	
FINALS	
Fort Hays 3	K-State 0

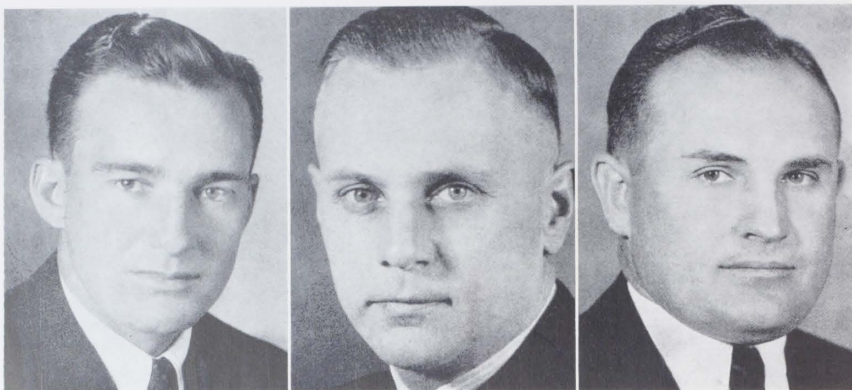

California 10, St. Mary's 0
 Washington 13, Santa Clara 6
 Princeton 7, Pennsylvania 6
 Notre Dame 14, Carnegie Tech 3
 Fort Hays 3, Kansas Aggies 0



ATHLETICS

Are they alive? . . . Queen Annie is received at Washburn . . . My skirt won't stay down . . . Bill looks plenty tough . . . Princeton, Notre Dame, FORT HAYS, get a load of that . . . Playing leap frog . . . Don't ducks have funny figures . . . Is this upside down . . . Wafted in the breeze . . . You ought to have been a girl, boys . . . Allez-coop, Helen . . . Queen Annie is presented some flowers . . . Queen Annie's procession at Washburn . . . Tumblers . . . Manhattan laid a goose-egg . . . You again, Helen? . . . The boys at Washburn . . . At Washburn again . . . Looking for a dust storm.





GRIDSTERS IN SECOND

Again the Central Intercollegiate Conference football championship has been brought to Fort Hays by a hard working, hard driving grid machine. This year the supervisor was "Jim" Yeager who replaced Jack Riley when Jack accepted a coaching job at Pottstown, Pennsylvania. Assistant coaches this year were "Bill" Bearley, a graduate of Fort Hays who has returned to his alma mater, and "Busch" Gross.

The championship this year was shared by three schools, Fort Hays, Pittsburg, and Wichita. Each team won three games and lost one.

Playing on the new gridiron in front of the old Golden Belt Fair grandstand, Fort Hays opened its 1935 season, indicating its vast power, by crushing a champion Augustana eleven from South Dakota, 34 to 6. This contest was meant to test the power of the Bengal eleven, but that power was never extended, and spectators left the game wondering just how much strength had been held in reserve.

The next engagement was also meant to be a test for the Tigers, but this time they clawed the Chadron Teachers, of Nebraska, into a 26 to 0 defeat. Once more the Tigers were untested as to their real ability.

Then came what may be termed the climax of the season. Fort Hays traveled to Manhattan, and with Bill Reissig booting a placement kick in the third period, hung a 3 to 0 defeat on Kansas State, the Big Six Champions. This victory was acclaimed by many to be the biggest upset in the Missouri Valley that Saturday.

After these three straight victories, the tide turned against the Tigers. They were ridden by an "every-other-game" jinx that worked with alarming regularity. And the Tigers were always defeated when playing on a muddy or slick field. Playing on a muddy field, Fort Hays lost to Emporia Teachers 3 to 0. However, due to the ineligibility of one of their players, Emporia was required to forfeit the victory to Fort Hays, 1 to 0.

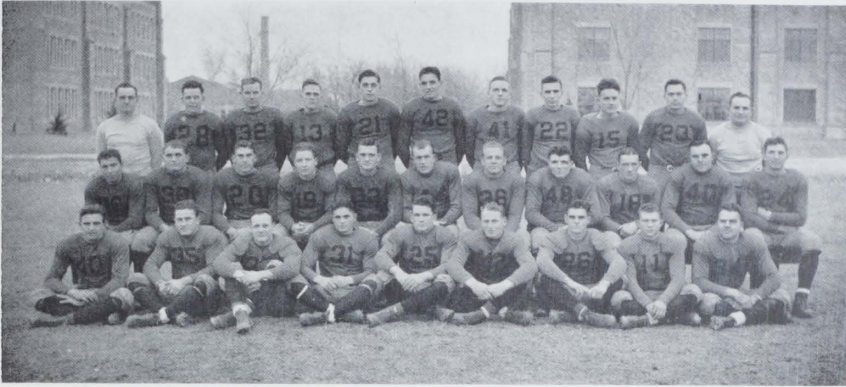
Again Fort Hays rose to the heights, and the next week trampled a good Wichita team 34 to 6. Larry Mullins, coach of St. Benedicts, said of the Tigers in that game, "Fort Hays is one of the best small college teams in the country." But Fort Hays, on the next Saturday, again playing on a muddy field, mired into an 18 to 0 defeat at the hands of St. Benedicts.

Resuming conference play, Fort Hays defeated the Southwestern Moundbuilders 20 to 0. And then, for the third straight time when playing on a slick field, Fort Hays was defeated, this time by Pittsburg, 21 to 0.

Having finished its conference schedule with a record of three wins and one loss, Fort Hays finished out its season by defeating Washburn, a representative of the Missouri Valley Conference, 21 to 6, and then romped on the Oklahoma Baptists in a Turkey Day game, 42 to 0.

A summary of the 1935 season shows that Fort Hays won 8 and lost 2 games, rolling up 172 points against 57 points for the opponents.

And now to introduce the 1935 Central Conference co-champions:



CONFERENCE VICTORY

Sylvester Palmer, co-captain, a senior, and for four years an important member of the Fort Hays backfield, is considered one of the best "spin-backs" in the state. His playing earned him a berth on the mythical all-state and all-conference elevens.

Dennis McKee, co-captain, a senior, and a four-year man, is a rather small guard whose fight and drive have placed him on a "little all-American" team, the all-conference team, and the second all-state team.

Ed Bender, a senior, played tackle for four years in such a smashing manner that it earned him an honorable mention on a "little all-American," and a place on the second all-conference team.

George Gruver, senior end, and for the second straight year a member of the second all-conference team, is a dashing type of player, strong at spilling interference.

Shim Dreiling, co-captain, a senior and for four years an important stone in the front wall, is a fast guard, good at leading interference. His play merited him a place on the second all-conference team.

Ralph Huffman, junior center, by his consistent playing won a second all-conference rating. He played defensive fullback excellently.

Alvin Staab, sophomore halfback and possessor of two letters, gained a berth on the second all-conference team in spite of being out of several games because of an injury.

Bill Reissig, a fullback who was shifted to end, and whose educated toe added several points to the Fort Hays column, was responsible for two Fort Hays victories.

Eugene Niewald, a junior and a powerful, hard-hitting halfback, has earned three letters.

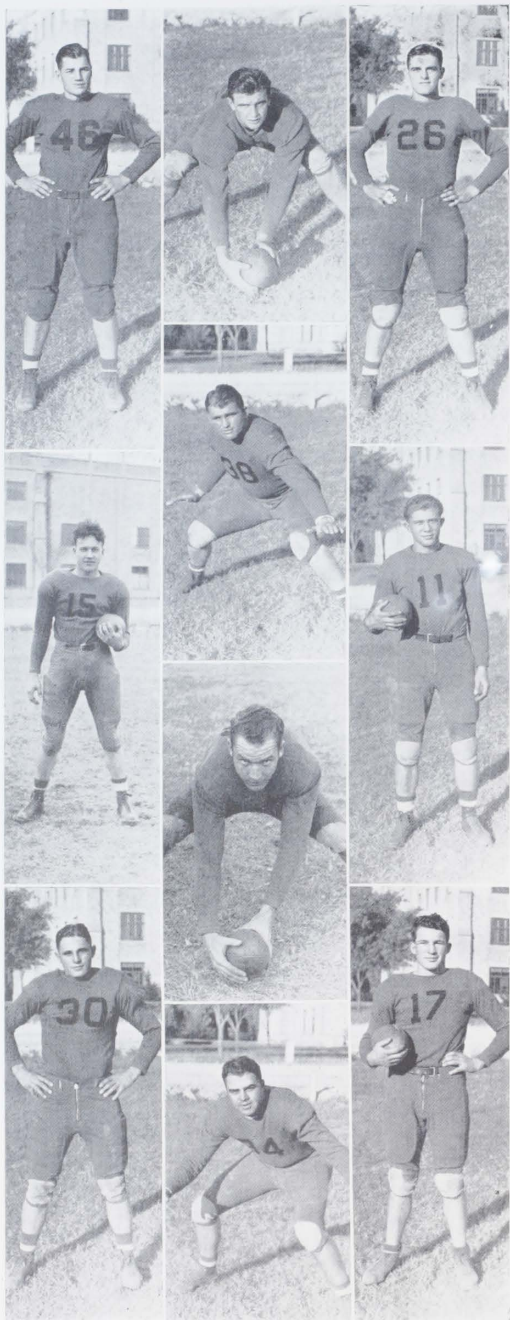
Herb Bender, a sophomore and a powerhouse at fullback, through his off-tackle smashes and drives into the line led the conference in scoring.

Rudolph Skubal, a sophomore and smashing tackle, has earned two letters.

Chester Mitchell is another big, rugged tackle who in his first year has demonstrated his worth to the team.

Woody Reinhold, a senior, was for four years an end. Wade Zeigler, a senior, was for two years a guard. Ellis Reinhardt, senior end, earned two letters.

Other lettermen on the squad are: Eugene Allen, back; Charles Burgess, back; Harold Darnell, back; Keith Elder, back; Tom Mosier, end; George Neelly, end; Dale Neelly, guard; Ward Riegel, fleet-footed freshman back; Harold Rotrock, center; Harold Randall, tackle; James Rawson, back; Dale Shellhaas, tackle; Paul Stenger, back; Howard Stehwein, center; Dale Underwood, back; Nicholas Smith, guard.



REINHOLD
UNDERWOOD
G. NEELY

STEHWEIN
E. BENDER
ROCKROCK
RANDALL

D. NEELY
RIEGEL
DARNELL

A. STAAB
REISSIG
NIEWALD

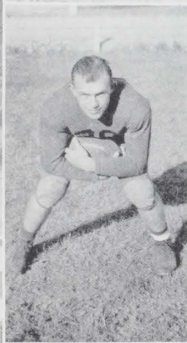
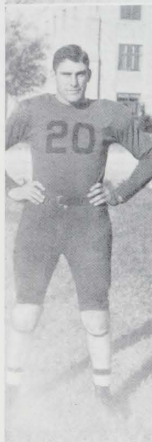
DREILING
GRUVER
PALMER
H. BENDER

ELDER
MOSIER
ALLEN

McKEE
SKUBAL
ZEIGLER
HUFFMAN

STENGER
RAWSON
REINHARDT

SHELLHAAS
SMITH
BURGESS
MITCHELL





PAUL "BUSCH" GROSS
Coach

SECOND PLACE HONOR

Five lettermen, captain-elect Herman Schwartzkopf, Richard Staab, Arthur Leas, Rufus Jamison, and Ray Thurlow answered the call for the 1936 basketball season. These were accompanied by three members of last year's "B" squad and several members of last year's second squad, forecasting what appeared to be a very promising season.

The season was opened on the home court by winning from Friends 33 to 11. Another non-conference victory over Bethel, 33 to 23, followed.

Opening the conference season on the home court, Fort Hays turned back Emporia twice, 44 to 32, and 35 to 20, in rather poorly played games, but games which showed the potential power of the Fort Hays quintet.

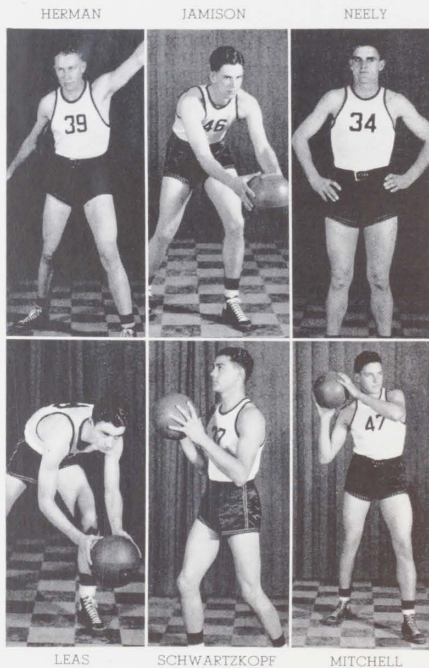
To keep in condition during the holidays, Fort Hays engaged McPherson in a non-conference game and was victorious, 37 to 22.

Fort Hays retained the conference lead and became championship favorites when they turned back the strong Southwestern crew twice 33 to 28, and 30 to 28.

The Tigers in a trip to Wichita, suffered a relapse in playing form, losing both games by the scores of 36 to 38, and 41 to 44. Both times they lost the lead in the last few minutes of play.

Again playing out of the conference, Fort Hays, on its home court, defeated the Haskell Indians 31 to 18.

Once more the Tigers had a winning streak in conference play. They turned back Pittsburg here, in the first game 36 to 27, and in the second game, 41 to 19. Then they traveled to Emporia to win twice, 33 to 28, and 35 to 28. This increased Fort Hays' conference standing to 8 wins and 2 losses.



HERMAN

JAMISON

NEELY

LEAS

SCHWARTZKOPF

MITCHELL

TO COURT QUINTET

Resting in first place, the Tigers turned aside from conference play to defeat the St. Benedicts quintet, 43 to 29.

A disastrous road trip to Southwestern dropped Fort Hays from first to second place and advanced the Winfield quintet from second to first place, when they defeated the Tigers twice, 27 to 29, and 24 to 36.

Needing to win the last four games in order to win the conference championship,



HERMAN SCHWARTZKOPF
Captain

Fort Hays whipped Wichita twice, 39 to 31, and 34 to 30, but went down to a double defeat on the Pittsburg trip 28 to 32, and 45 to 30, thus dropping to second place and allowing Southwestern to step into undisputed first place.

Second place is the highest position the Tigers have ever been able to attain in the conference rankings. This year is the second time Fort Hays has attained that position.

Fort Hays throughout the season played a high brand of ball and rewarded the large crowds that turned out to see them, with spectacular playing. Throughout the season the Tigers rang up 723 points to their opponents 588 points, an average of 34 points to 27 points per game.

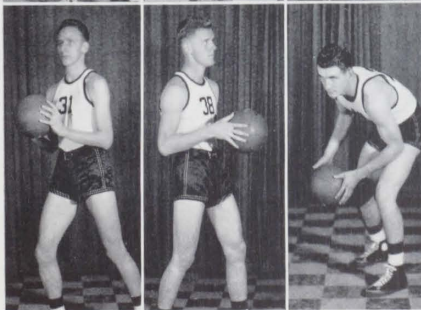
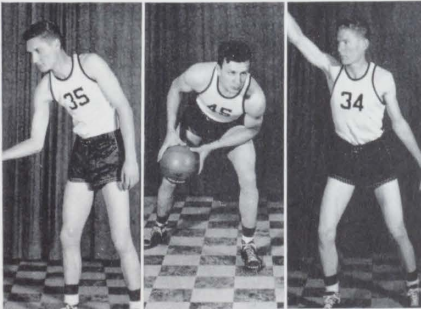
All-conference honors went to Richard Staab, center, who was voted all-conference center and captain, and Herman Schwartzkopf who earned a guard position on the all-conference team. Herbert Baker and Chester Mitchell received honorable mention in the all-conference ratings.

This year eleven men were lettered. They are: Herman Schwartzkopf, captain and guard; Richard Staab, center; Arthur Leas, forward; Herbert Baker, forward; Chester Mitchell, guard; Ralph Hinkle, forward;

BAKER

R. STAAB

MOTLEY



McGRATH

HINKLE

A. STAAB

Arnold McGrath, forward; Rufus Jamison, center; Ray Thurlow, guard; Alvin Staab, guard; Dale Neelly, forward. Only one man, Schwartzkopf, will be lost by graduation this year. This fact indicates another successful season for next year.

Season's Record

Fort Hays.....	33	Friends.....	11
Fort Hays.....	33	Bethel.....	23
Fort Hays.....	44	Emporia.....	32
Fort Hays.....	35	Emporia.....	20
Fort Hays.....	37	McPherson.....	22
Fort Hays.....	33	Southwestern.....	28
Fort Hays.....	30	Southwestern.....	28
Fort Hays.....	36	Wichita.....	38
Fort Hays.....	41	Wichita.....	44
Fort Hays.....	31	Haskell.....	18
Fort Hays.....	36	Pittsburg.....	27
Fort Hays.....	41	Pittsburg.....	19
Fort Hays.....	43	St. Benedicts.....	29
Fort Hays.....	27	Southwestern.....	29
Fort Hays.....	24	Southwestern.....	36
Fort Hays.....	39	Wichita.....	31
Fort Hays.....	34	Wichita.....	30
Fort Hays.....	28	Pittsburg.....	32
Fort Hays.....	30	Pittsburg.....	45
Total.....	723	Total.....	588

Conference Standing

	<i>Won</i>	<i>Lost</i>
Southwestern.....	12	4
Fort Hays.....	10	6
Wichita.....	8	8
Pittsburg.....	7	9
Emporia.....	3	13

INTRA-MURALS

Intra-mural sports now play an important part at Fort Hays for boys who don't care to try out for inter-collegiate sports but who like to participate in sports throughout the year.

Under the supervision of the student director, "Gub" McDonald, intra-murals include speedball, horseshoe, volley ball, baseball, basketball, and tennis. As the Reveille goes to press, only two divisions have been completed, namely speedball and basketball. Each of these was won by the Spanish Athletic Club, a group of barrack boys.

This year there are teams of five organizations and three independent teams entered in the competition. The fraternities are Phi Mu Alpha, Phi Sigma Epsilon, Kappa Beta Tau and Sigma Tau Gamma. The non-fraternal organizations are the Y.M.C.A., and three independent teams, which are the Spanish Athletic Club, Willison's Ramblers and Opdycke's team.

Although at this writing it is unknown how many baseball teams will enter or how many tennis players there will be it is believed that there will be at least eight baseball teams and at least a hundred singles players in tennis. Tennis has become more popular the last two years because of the reconditioned courts and there is now a large percentage of the student body interested and playing tennis.

To make winning more desirable in intra-mural sports, a record of points are kept during the year and the team with the most points at the end of the season's play is awarded an intra-mural cup.



TRACK

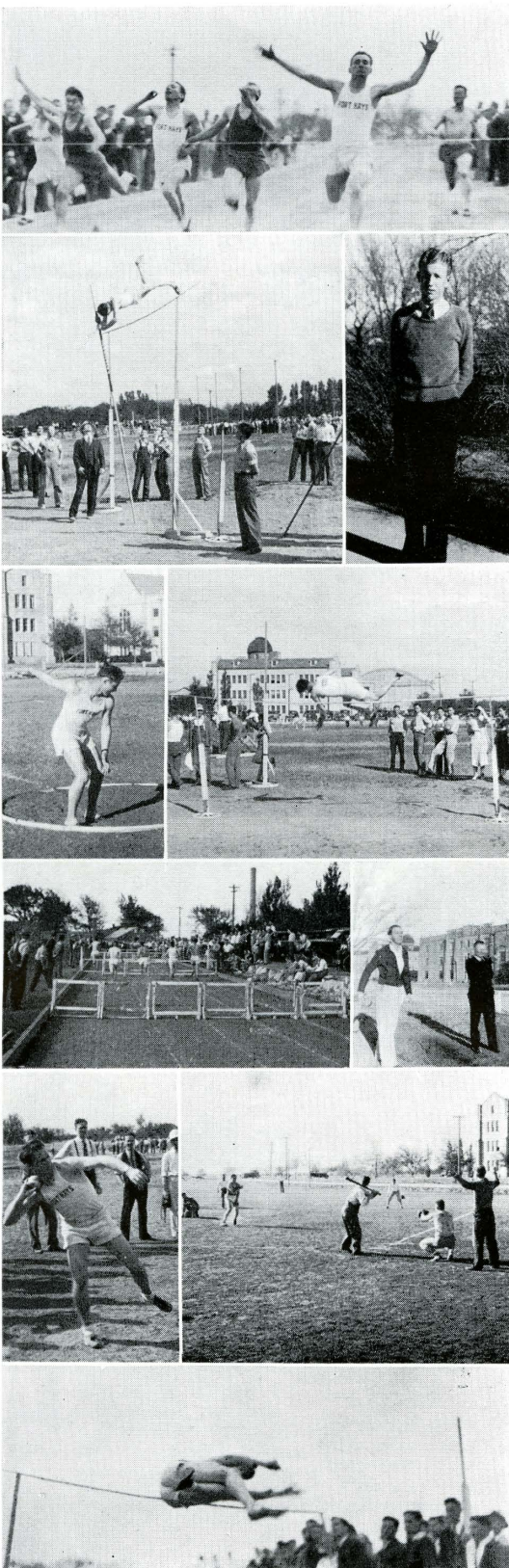


Track at Fort Hays this year should have the most successful season it has ever had with twelve lettermen back in school and many promising freshmen reporting to fill out a well rounded squad. Under the tutelage of Jim Yeager, track has become more promising each year and now that Jim is leaving next year it is fitting that he leave with the memories of a winning track squad.

Lettermen reporting for practice are: Floyd Stephens, captain and broad jumper; Alvin Staab, dashman and javelin (Staab placed first in the conference meet last year); Eugene Holm, dashes; Lawrence Pfortmiller, weights; Colvin Kindschi, javelin; Norval Curry, pole vault and high jump; Wesley Burford, broad jump and high jump; Burtis Taylor, hurdles; Floyd Foley, hurdles; Vernal Duncan, distance man; Johnnie Michael, distance man; William Mog, distance man.

This year's schedule includes a dual meet with Kansas State, last year's indoor Big Six champions, May 2; a dual meet with Kearney State Teachers of Nebraska, April 16; a dual meet with Hastings of Nebraska, April 24; the Hastings Relays, April 11; a triangular meet with Wichita and Southwestern, May 8; and the conference meet at Wichita, May 14 and 15.

A feature attraction each spring is the running of the Western Kansas Relays in which several hundred high school tracksters of Western Kansas compete. Each year several records have been broken since its beginning several years ago.





"K" CLUB

The "K" Club is an organization of young men who wish to promote the spirit of good fellowship among athletes and to foster the spread of athletic activity on the campus. Sportsmanship is the main criterion of this club.

To become a member of this organization of athletes you must have earned a "K" letter in any sports activity. To be eligible for a "K" letter one must have passing grades in twelve hours of major subjects.

The records made by all the athletic teams this year have been favorable to the "K" Club as well as to the college. The football team made a remarkable record during the season. The men who are to receive their first "K" letter for football are Dale Neelly, George Neelly, Tom Mosier, Ward Riegel, Paul Stenger, Keith Elder, Chester Mitchell, James Rawson and Harold Darnell.

The basketball team also made an exceptionally good record. Two players, Richard Staab and Herman Schwartzkopf, were chosen for the all-conference team. Richard Staab was also chosen as all-state forward. Herb Baker and Chester Mitchell each received honorable mention rating for the season just closed. Those who are to receive a "K" letter for basketball are Herb Baker, Chester Mitchell, Ralph Hinkle, Ray Thurlow, Dale Neelly and Arnold McGrath.

The track captain last year was Herman Schwartzkopf. His team made one of the most outstanding records ever made by a Tiger track team. The track captain for this season is Floyd Stephens. He also has a very promising team. An authority on track said that the chances for this year's track team are just as good or even better than those of last year's team.

The officers of the "K" Club are:

President - - - - -	- DENNIS MCKEE
Vice-president - - - - -	- ED BENDER
Secretary and Treasurer - - - - -	EUGENE NIEWALD

"K" MEMBERS:

DENNIS MCKEE
EUGENE NIEWALD
ED BENDER
HERB BENDER
WARD RIEGEL
KEITH ELDER
BILL REISSIG
ALVIN STAAB
RUDOLPH SKUBAL
HOWARD STEHWIEN
HAROLD RANDALL
RALPH HUFFMAN
HAROLD ROTROCK

GEORGE GRUVER
DALE SHELHAAS
TOM MOSIER
JAMES RAWSON
CHARLES BURGESS
WADE ZEIGLER
DALE UNDERWOOD
ELLIS REINHARDT
CHESTER MITCHELL
NICHOLAS SMITH
PAUL STENGER
FRANK DREILING
SYLVESTER PALMER

RICHARD STAAB
HERMAN SCHWARTZKOPF
RAY THURLOW
RALPH HINKLE
RUFUS JAMISON
HERB BAKER
ARTHUR LEAS
ARNOLD MCGRATH
HENRY UPPENDAHL
FLOYD STEPHENS
LAWRENCE PFORTMILLER
WILLIAM MOG
FLOYD FOLEY
BURTIS TAYLOR

CLARENCE KAHLER
JOHN MICHAEL
JOE ZAMRZLA
COLVIN KINDSCHI
ARTHUR AUSTIN
WESLEY BURFORD
EUGENE HOLM
FLORIAN HOLM
NORVAL CURRY
VERNAL DUNCAN
RENNIE ZEIGLER
WARD SHULL
WOODY REINHOLD



PI EPSILON PI

Pi Epsilon Pi, better known to the students as the Pep Club, is an organization of young people whose purpose is to promote the spirit and boosting of all athletic events. It has been an important factor in the successes which Fort Hays football, basketball and track teams have achieved. The officers for the year are:

President - - - - -	JANE FLOOD
Vice-president - - - - -	CLARENCE KAHLER
Secretary-treasurer - - - - -	JOHN WILLCOXON

Cheerleaders, elected by the student body in the fall, are Bill Wolfson, Keith Sebelius and Ivan Birrer. The men assist at all games and pep meetings.

Members of Pi Epsilon Pi are:

JANE FLOOD
 CLARENCE KAHLER
 JOHN WILLCOXON
 FRITZ TOLAND
 GERALD OPDYCKE
 BROOKS RICKARD
 ELMER RUDOLPH
 LLOYD WILLISON
 ROLAND KAHLER
 SYBLE FINCHER
 VELMA DAUNER
 BETTY BROWN
 CHARLOTTE DAVIDSON
 KEITH SEBELIUS
 TILLIE YOUNG
 ISABEL BARKER
 FLORA LEE COCHRAN
 ESTHER GOLTJ
 MILDRED MURRAY

NAOMI GRIFFITH
 LUCILLE HOCH
 EVELYN ZINSZER
 MILDRED WIEST
 IDA MAE WIRUTH
 BETH ATKINS
 NELLA MAE MARSHALL
 ELAINE BITTER
 RUTH POLSON
 JO OWENS
 LAVINA ROW
 HELENE BARRY
 KATHRYN BODMER
 VERA SPRINGFELDT
 LEOLA GUSTAFSON
 IZELLA JACKSON
 JOY SMITH
 DOROTHY STEHLEY

ERMA LOWREY
 MARTHA BLEW LINE
 JOY MCKIE
 VIOLETTE GROSSARDT
 CELESTE LOWREY
 LOUISE PETERSON
 GWENDOLENE TOLAND
 FLORENCE McROBB
 RUTH FRISBIE
 ALMA KLIENT
 MINTIE MEREDITH
 GWENDOLENE DIMMITT
 ANNA LOU GALLOWAY
 WESLEY BURFORD
 ELSIE MAE KEAST
 ESTHER GOODIN
 IRENE BEAN
 ANITA HAAG
 ERNESTINE MELLOR



WOMEN'S ATHLETIC ASSOCIATION

The Women's Athletic Association is the organization for promotion of interest in women's sports. Points are given for participation in team sports, hockey, basketball and speedball, in the individual sports, swimming, hiking, archery, tennis and skating, and dancing. High awards of the organization are the "K" letters and sweaters. Clara Nicholas, Helen Frances Bice and Nora King have sweaters.

One of the outstanding annual events is the Play Day for high school girls. The program this year was the Olympics, held at the coliseum on May 9. Competition was among Olympic teams rather than between schools.

A great deal of interest has been evidenced in the intra-mural program. Volley ball, basketball, hit-pin baseball, tennis, and tenniquit are the sports played. The independent team, "Meredith's Team," captained by Mintie Meredith, won first place in basketball. The volley ball tournament cup was won by the Theta Sigma Upsilon team.

Ruth Schiller is the organization's president and Helen Frances Bice is the intra-mural head. The board consists of Celeste Lowrey, Ruth Cross, Helena O'Loughlin, Clara Nicholas and Anita Haag.



ORCHESIS

Orchesis is a dancing club composed of girls who have qualified for membership through the interpretive dancing class. The members study advanced techniques and learn group dances. This fall there was a unit on ballet, including toe technique.

Orchesis cooperates in putting on performances for various occasions. During the State Teachers Meeting in November, Orchesis gave a demonstration of folk material usable in high school. At a Pep Assembly on February 28, the club gave some tap numbers and a specialty tiger dance. Helen Frances Bice as the peppy cheer leader and Nora King and Clara Nicholas as the playful tigers were particularly well received. The numbers were repeated at the Wichita basketball game that evening.

At the High School Play Day on May 9 the Orchesis entertained the guests at the end of the day with a program of dances depicting various Olympic games.



DUCK CLUB

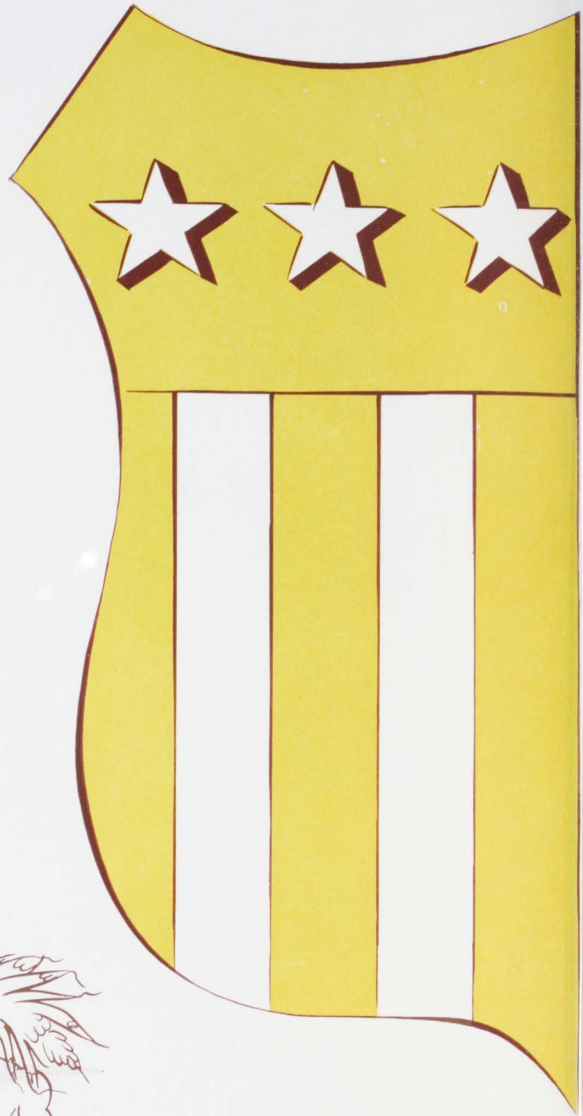
Duck Club is a student swimming organization of girls proficient enough to pass the membership test. After passing the preliminary test one is entitled to become a "Duckling"; passing the second and more difficult test qualifies one to become a full-pledged "Duck" and so to wear a white and yellow Duck emblem on the swimming suit. Tests are given from time to time to qualify new members.

This club always has charge of the swimming events and water games of the high school play day. This year Ruth Cross and Celeste Lowrey headed the committee for water activities. The annual spring water carnival was presented two successive evenings.



LIFE SAVING

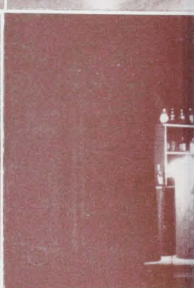
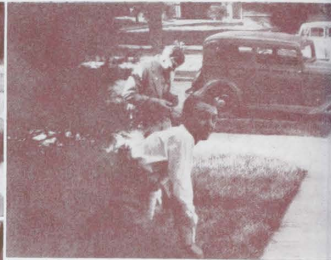
Life Saving tests are given once during each school year by an American Red Cross representative sent out from headquarters at St. Louis. Mr. Ralph L. Carr visited Fort Hays this year on February 17th, 18th, and 19th, giving instruction and tests for Life Saving the first two days and speaking to the student body at assembly on the third. As a result of the tests, Nora King, Clara Nicholas, and Ruth Schiller were reappointed as examiners; Celeste Lowrey, Alberta Page and Patricia Shaffer, formerly senior life savers, received appointments as examiners. Other life savers in college this year were Erma Lowrey, a senior, and Rena Reed, an examiner. Clara Nicholas, Rena Reed and Patricia Shaffer have acted as life guards for the recreation swimming period for women this year.

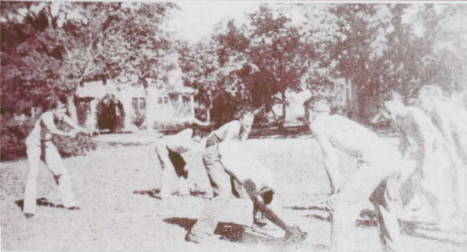
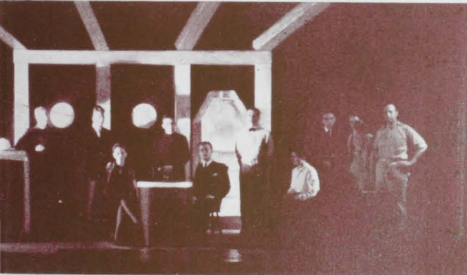




TREATY





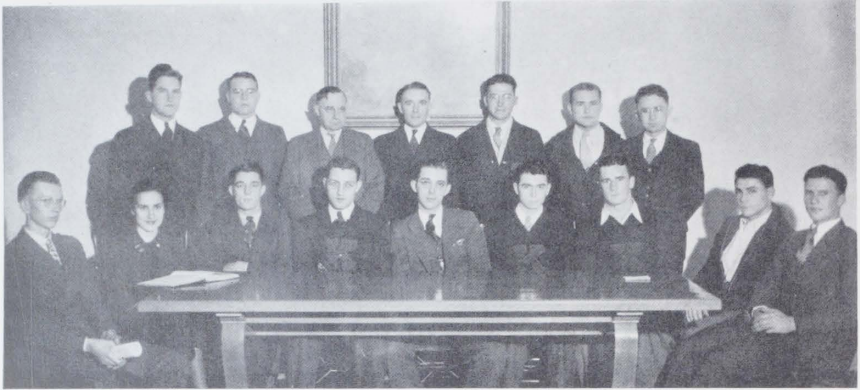


ORGANIZATIONS

An all school party . . . Shall we go in?
 . . . How did this picture get in? . . .
 Poor freshie, no cap . . . Stop cheating,
 Georgie . . . The Manhattan victory
 crowd at the show . . . What is this, a
 game? . . . On their way out west, to
 Science . . . The Y.M.-Y.W. carnival
 . . . Looking down from the Coliseum
 . . . Those playful Kappa Phis . . .
 Counting Reveille Queen votes . . . A
 clean-up gang . . . THE employment
 office . . . Outward Bound, only Mac
 didn't go . . . \$19.50 please . . . Every-
 body happy? . . . Find the hidden faces
 . . . Phi Mus and Sigma Taus playing
 football. Editor's note: Picture taken
 before the boys got mad at each other.

They don't play together now.





Top Row: RANKIN, DICKEY, LEE, DALTON, GRUVER, ALLEN, CARLILE.
 Bottom Row: McCANDLESS, NICHOLAS, WAELDIN, PARK, LEAS, NIEWALD, SCHWARTZKOPF, BALMAN.

STUDENT COUNCIL

A Student Council was first organized at Fort Hays Kansas State College in the spring of 1911, and since that time such an organization, with Dean F. B. Lee as sponsor, has continued to function as the supreme student governmental body, cooperating with the faculty and administration.

The membership of the Council is determined in the spring elections, and that of last spring was as colorful as ever, with the handbills and more or less private electioneering. Those elected were: Walter Park, Alan Rankin, and George Gruver at large; Clara Nicholas and Herman Schwartzkopf from the senior class; Boyd McCandless and Henry Baker from the junior class; and Burtis Taylor and Arthur Leas from the sophomore class.

The fall election completed the membership, adding Maurice Waeldin from the senior class, Eugene Niewald from the junior class, Otis Dickey from the sophomore class, and Floyd Balman, Clark Carlile, and Harold Allen from the freshman class. Later in the year, however, the following people were also elected to fill vacancies occurring during the year: Norval Curry, elected at large; Clarence Kahler from the senior class, and Chester Mitchell from the junior class.

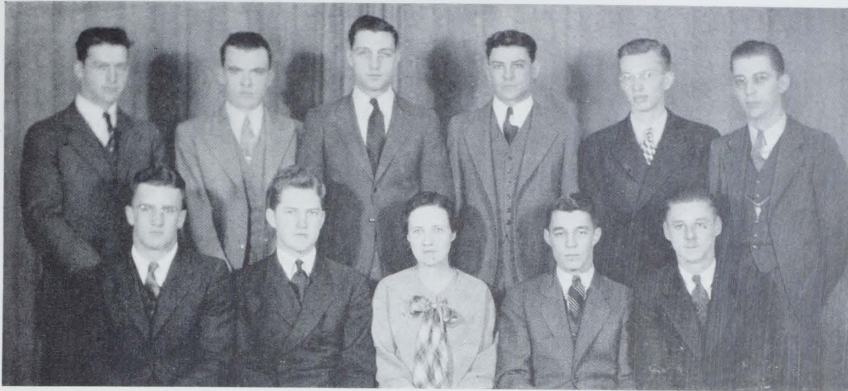
Among the Council's duties is that of sponsoring holidays such as that celebrating Fort Hays' 3-0 victory over the Aggies. The program of the day included a pep rally in the morning, followed by a varsity; a picture show in the afternoon, and an evening varsity. The Council also sponsors such celebrations as that for Homecoming.

Further duties include making of rooming house rules, sponsoring of school elections, regulations of social activities so that they maintain standards of the college, and helping provide for the students' enjoyment of college. In carrying out this latter duty, the Student Council this year made special efforts to organize on the campus a Students' Union Building. Another feature of this year's work was the sponsoring of a student vote as to amending the student constitution so that a part of the activity fee is used for purchasing a "Reveille."

Another day of celebration sponsored by the Council is the annual Pike Day, with a program consisting of a picnic dinner, picture show, and varsity.

Officers for the Student Council are:

President—1st semester	- - - - -	WALTER PARK
President—2nd semester	- - - - -	HERMAN SCHWARTZKOPF
Vice-president	- - - - -	BURTIS TAYLOR
Secretary-treasurer	- - - - -	CLARA NICHOLAS



Top Row: GRUVER, WILLCOXON, TAYLOR, SCHWARTZKOPF, McCANDLESS, PARK.
 Bottom Row: NIEWALD, RANKIN, HRUZA, WAELDIN, DAVENPORT.

SEVENTH CAVALRY

The Seventh Cavalry is a new organization on this campus which was started by the Student Council last year. It is a local honorary leadership fraternity. The name was chosen in honor of General Custer's Cavalry which was stationed at the old Fort in the early days.

Membership is based on demonstrated leadership, ability, service, character and scholarship. To be eligible for membership, the student must have spent at least one year in the college as a regularly enrolled student. The membership at no time can exceed 15 active members.

In the original organization, women students were accepted into membership, but this year it was decided to limit the membership to the men with the hopes that the women of the college would organize a similar group. Election to membership must be by unanimous vote of the fraternity.

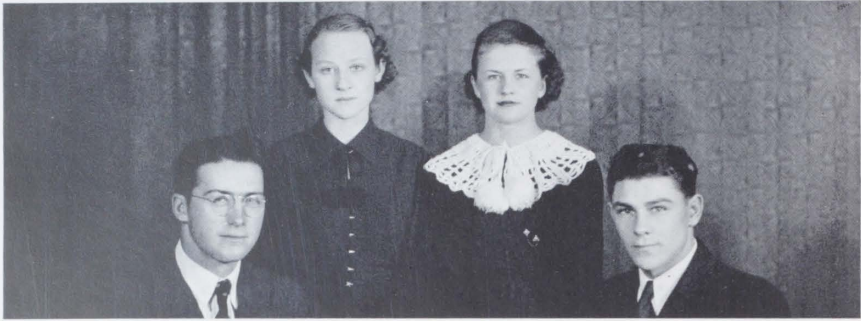
Three honorary members were elected and initiated into membership last spring. They were Kathryn O'Loughlin McCarthy, President C. E. Rarick and Dean F. B. Lee.

Present members of the organization are Walter Park, Maurice Waeldin, Herman Schwartzkopf, Alan Rankin and Boyd McCandless.

Five pledges were selected in the fall and will be initiated during Commencement Week. They are: Eugene Niewald, Burtis Taylor, John Willcoxon, George Gruver and Kenneth Davenport.

Officers for the year are:

President	- - - - -	ALAN RANKIN
Vice-president	- - - - -	BOYD McCANDLESS
Secretary-treasurer	- - - - -	WALTER PARK
Faculty sponsor	- - - - -	MRS. THELMA HRUZA



Assembly Officers: GRUVER, SCHERER, UNDERWOOD, SCHWARTZKOPF.

STUDENT ASSEMBLY

There are a number of activities on our campus performing worth-while services which are brought to the attention of many students only by student assemblies. These assemblies are just what they are called, student assemblies. They are managed by persons elected from the student body at large and the programs are drawn from student organizations.

For the first semester of the year George Gruver was elected to the position of Chairman of the Student Assembly and James Wright held this office the second semester. With the cooperation of the other assembly officers, the faculty committee, and various organizations such as the Debate Club, the Orchestra Club, the Men's and Women's Glee Club, the Band, and the Orchestra, some interesting assemblies were arranged.

With the presentation of assembly programs by various campus groups, an interest in the work of these groups has been aroused in the student body. More interest is taken in school and student affairs. Thus the student assembly achieves its purpose to entertain and to inform.



"THE LITTLE THEATRE PRESENTS..."

Such a notice is sufficient to awaken the interest of the entire student body, for the Little Theatre has established an enviable reputation. This year, under the direction of Orvis Grout, it has expanded its repertoire to such an extent that a wide variety of interesting dramas have been presented to enthusiastic audiences.

The Little Theatre has interpreted its productions in such an understanding manner that it has instantly struck a responding chord in its audience. Not only have the students of Fort Hays been fortunate in seeing these productions, but also communities over points extending from Tribune to Osborne and Great Bend to Alma have had their chance to view such plays as "Outward Bound," "Three Cornered Moon," and "What They Think." Each presentation has added to the Little Theatre's reputation of presenting entertaining plays. Other plays presented on the campus: "You and I," "Cradle Song," "Dear Brutus," "The Enemy," and "Sunset"—have ably upheld this reputation.

Students prominent in Little Theatre productions are:

Betty Brown, Joe Barbo, Claude Summers, Maurice Swanson, Virginia Beason, John Page, Arlene Harrison, Guwendola Johnson, Harrison Honderick, Kathryn Fisher, Joy McKie, Josephine Sire, Charles Rhoades, Lottie Linebaugh, Colvin Kindschi, Leola Gustafson, James Williams, Lewis Pankaskie, Derrill Pratt, Jane Flood, Martha Blew Line, Anne Fankhauser, Brooks Rickard, Helen Wells, Karl Carson, Gayle Stover, Marvella Schridde, Ida Eleanor Chittenden, Ruth McAdoo, Gwendolene Toland, Wilma Shull, Louise Price, George Thompson, Catherine Masters, Izella Jackson, Ruth Baker Hines, Glenn Garten, Ila Fern Fellers, Louise Barnes, Pauline Fleming, Syble Fincher, June Gamet, Kenneth Davenport, Lloyd Sidener, Flora Lee Cochran, Wava Wright, George Galloway, Helen Seamon, Marcus Hahn and George Adams.



Y. W. C. A.

"Unite all who desire to strengthen the spiritual, mental, and physical life, to promote growth in Christian character and fellowship, to train its members for Christian service, and to lead them to devote their lives to Jesus Christ in whatever field they believe they can best accomplish the most for the extension of the Kingdom of God." This purpose of the Young Women's Christian Association and the Young Men's Christian Association has been more nearly achieved this year than ever before with the teachings of Christ being more truly manifest upon this campus.

The Y. W. under the sponsorship of Miss Maude Gorham, with its officers: Esther Louderbaugh, president; Maxine Brumfield, vice-president; Margaret Bartholomew, secretary; and Anne Fankhauser, treasurer, has gone forward making this a red letter year in the history of the organization.



Y. M. C. A.

The Y. M. the first semester was led by George Gruver as president, the second semester Keith Sebelius was elected president; Richard Bracken, vice-president; Ned Whitmer, secretary; and Maurice Wilson, treasurer. Dr. Wiest and Dr. Barton have continued to faithfully serve as sponsors. Mr. Dalton, a new member of the faculty, is the active sponsor and has become the omnipotent force in the Y. M. progress. Highlights in the year's events were the Carnival Mixer, the Newton Student Conference and Religious Week, at which Dr. Templin, of Colby, was the chief speaker. The membership of the Y. M. has increased this year from 34 to 76 young men and the Y. W. has made a substantial gain.

The organizations form a voluntary, self-determining, cohesive fellowship on our campus and are committed, through study, prayer and vicarious living, to creating and maintaining the attitudes and ideals of Jesus in all the relationships of life.



NEWSPAPER
UNION
1 2 3 4 5 6 7
8 9 10 11 12 13 14
15 16 17 18 19 20 21
22 23 24 25 26 27 28
29 30 31 32

FORT HAYS STATE COLLEGE
ALAN RANKIN, EDITOR - GAYLE STOVER, MANAGER



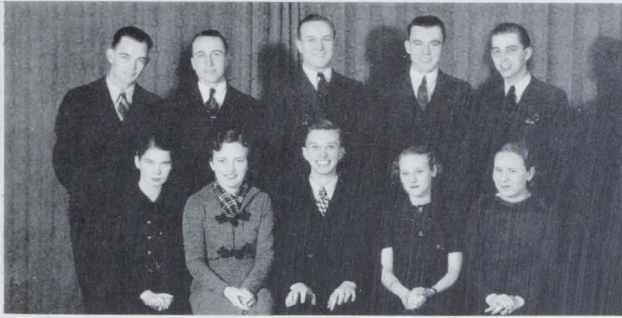
Standing: VAUGHN, McKIE, SCHERER, HENDRICKS, SCHRIDDE, WILLCOXON.
Seated: FISHER, GARLOW, RANKIN, GALLOWAY, STOVER, JACOBS.

1936 REVEILLE

The Reveille is the annual publication of the Fort Hays Kansas State College. It is published by the Junior class and presents a volume that exemplifies the character of the student and reflects the atmosphere of the school as it is day by day. This is its 32nd year, having been published consecutively, with the exception of one year during the World War, since 1903.

The staff members are:

- ALAN RANKIN - - - - - Editor
- GAYLE STOVER - - - Business Manager
- ANNA LOU GALLOWAY - - Assistant Editor
- JOHN WILLCOXON Assistant Business Manager
- JOE MOSS - - - - - Art Editor
- KATHRYN FISHER } - - Feature Editors
- MARVELLA SCHRIDDE }
- RITA JACOBS } - Organization Editors
- PAULINE SCHERER }
- MAURICE VAUGHN - Circulation Manager
- SHELBURNE HENDRICKS Ass't Circulation Mgr.
- ARNOLD McGRATH - - Men's Sports Editor
- RUTH GARLOW - - Women's Sports Editor
- GEORGE GALLOWAY - - - Photographer
- JAMES R. START - - - Faculty Advisor
- WALTER WALLERSTEDT - - - Advisor



COLLEGE LEADER

WESTERN KANSAS STATE COLLEGE, HAYS, KANSAS, THURSDAY, NOVEMBER 7, 1935

Test
e Dec. 6

QUILL NAMES PLEDGES

W. A. A. Intramurals
Swinging Into Line

TIGERS D

Tests for
the medical
college
March 1st

17 ARE ELIGIBLE TO PLEDGE
WRITERS FRATERNITY
The Quill Club of the College has

Women's Intramurals sponsored by
the Women's Athletic Association
will open soon. Practice for the first
contest will begin some time this week.

BUILD

Top Row: CONRY, SAVAGE, KAHLER, WILLCOXON, PARK
Bottom Row: KELLY, TOLAND, McCANDLESS, SCHERER, JACOBS

STATE COLLEGE LEADER

The Leader is the weekly student newspaper edited through the journalism department. It is a student publication the aim of which is to present a weekly picture of the campus life. It is also a medium by which the alumni may keep in touch with the college.

The Leader has been published for twenty-seven years, and has followed the growth of the school from the old Western Kansas Normal to the Fort Hays Kansas State College. It began as the "Western Kansas Leader," was changed to the "K.S.T.C. Leader," and later in 1931, to the "State College Leader."

Staff members are:

- BOYD McCANDLESS - - - - Editor
- WALTER PARK *Business Manager, 1st semester*
- JOHN WILLCOXON *Business Manager, 2nd semester*
- RITA JACOBS - - - *Assistant Editor*
- CLARENCE KAHLER - *Circulation Manager*
- FLOYD CONRY } - - - - *Sports Editors*
- WARD SAVAGE } - - - -
- JOY MCKIE - - - - *Society Editor*
- THELMA KELLY - - - - *News Editor*
- GWENDOLENE TOLAND - - *Alumni Editor*



Top Row: MITCHEM, SEBELIUS, VOSS, START, SMITH, McCANDLESS.
 Middle Row: CARLILE, DIMMITT, GARTEN, HARRIS, TAYLOR, PARK.
 Bottom Row: BISHOP, BURRIS, BIRNER, VINCENT.

Top Row: PARK, START, McCANDLESS.
 Bottom Row: TAYLOR, GARTEN.

FORENSICS

Debate! Combine days of uneventful study, hours of speech-making and scrapping and years of practice. That's debate!!

What thrills, what hopes, what thwarted desires that one small word produces in the minds of those persons who have experienced the headaches and weariness of mind created by the pang of having their own statements slapped right back at them.

Debate is steadily growing in popularity. At last those individuals whose talents seem to lie in speech-making are being more convinced that debate experience is one of the greatest assets of a public speaker. Debate gives one poise, self-control, ability to reason on one's feet, and, more than all these, the opportunity for making those friendships that only the competition of a debate tournament affords.

And thus we of this year's debate squad feel we have been so benefited. Our coach, Mr. Start, has stated that he had more good material this year than ever before, and we hope that as the years progress more and more students will find their place in college forensics.

This year the squad was composed of Walter Park, Gerald Smith, Richard Bishop, Wilbur DeYoung, Herbert Cole, John Willcoxon, Boyd McCandless, Clark Carlile, Omer Voss, Allen Mitchem, Keith Sebelius, Ivan Birner, Kenneth Davenport, Marguerite Taylor, Faye Garten, Fern Vincent, Verna Ruth Harris, Gwendolyn Dimmitt, Lenore Burris, and Virginia Beason.

At the Winfield Tournament, the second largest of its kind in the United States, Lenore Burris and Gwendolyn Dimmitt paved the way for the Fort Hays debaters by emerging from their five rounds with a perfect record; John Willcoxon and Boyd McCandless both won the

right to enter the finals in extempore oratory from which Willcoxon received fourth place; Faye Garten and Marguerite Taylor won three of their five debates. Others making the trip included: Walter Park, Gerald Smith, Omer Voss, Clark Carlile, Keith Sebelius, Ivan Birner, Fern Vincent, and Verna Ruth Harris.

At the Hutchinson Tournament in which twenty-seven schools participated, Fort Hays ranked sixth in debate and, through the efforts of Marguerite Taylor and Virginia Beason, second in women's oratory. Gwendolyn Dimmitt and Lenore Burris, Omer Voss and Clark Carlile each won four of their six debates.

At the national Pi Kappa Delta tournament held at Houston, Texas, Faye Garten and Marguerite Taylor with two years of experience, Clark Carlile, first year, and Omer Voss, first year, represented the local chapter. John Willcoxon was our participant in men's extempore speaking; Keith Sebelius and Virginia Beason were the respective entrants in men's and women's oratory.

The Pi Kappa Delta debate question used by the colleges this year was, "Resolved, that Congress should have the power, by a two-thirds majority vote, to override decisions of the Supreme Court declaring laws passed by Congress unconstitutional." This question was both timely and interesting. And as we weigh the cases presented on either side, we find the students deriving just as much fun in characterizing our Supreme Court judges as superhuman, infallible beings as in ridiculing our Congressmen as the "best Congressmen that money can buy."

All in all we feel this debate season has been a most successful one.

PI KAPPA DELTA

Pi Kappa Delta is a far flung organization—150 chapters in 35 states and Porto Rico. The officers of the local Nu Chapter for this year have been Boyd McCandless, president; Faye Garten, vice-president; Marguerite Taylor, secretary-treasurer; and Walter Park, historian.

Fort Hays Kansas State College was represented at Winfield in the Pi Kappa Delta tournament in December by twelve students who entered both debate and extempore speaking. The college deserves to be proud of the degree of success attained in this contest.

The high school debate tournament, November 22-23, was sponsored by Pi Kappa Delta and included a dinner at Cody Commons for all debaters and coaches.

The climax of this year's work comes in representing Fort Hays Kansas State College at the National Pi

Kappa Delta tournament at Houston, Texas, March 29 to April 3. This is an honor that is coveted by everyone and a great many hours of work and practice were spent in preparation for this event. The number of contestants entered by each school is limited to one team or one entrant in each division. Those in women's debate were Faye Garten and Marguerite Taylor. Boyd McCandless and Omer Voss composed the men's team. Keith Sebelius entered in men's oratory and Virginia Beason in women's oratory. John Willcoxon represented the college in extempore speaking.

Those eligible for Pi Kappa Delta are: Lenore Burris, Gwendolyn Dimmitt, Verna Ruth Harris, Fern Vincent, Virginia Beason, Keith Sebelius, John Willcoxon, Ivan Birner, Omer Voss, Clark Carlile, and Gerald Smith.

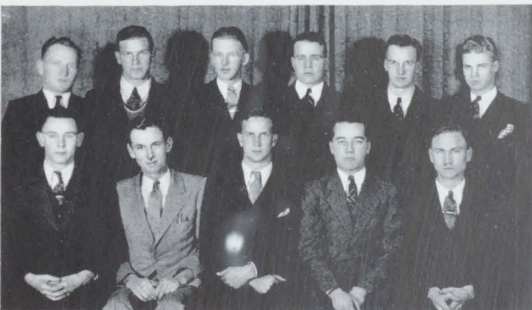
CLUBS

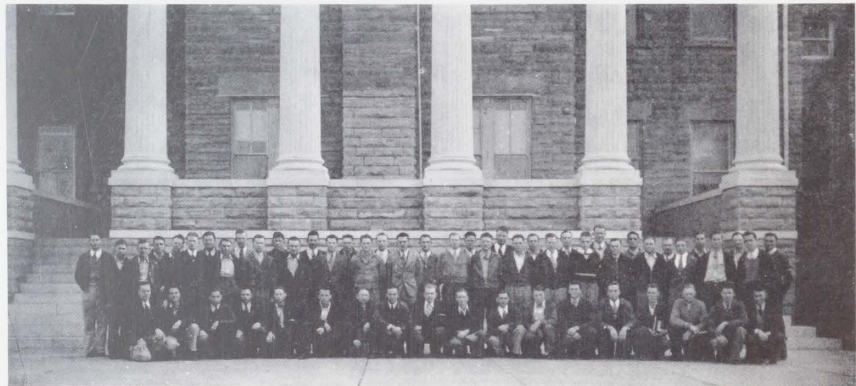
The Quill Club is an honorary organization for writers. The chapter on this campus is a member of the national organization. The purpose of this organization is the advancement of creative writing. Monthly meetings of the Quill Club are held with Boyd McCandless, as president, presiding.

Can you cook? Well, you really don't have to just cook to be a member of the Home Economics Club. Membership in this group is by election. The two outstanding features of the club are the annual Christmas party, which is centered around the old English customs, and the annual trip to the state convention. Stella Schlegel heads the organization as president, this year. Margaret Haggart is their faculty sponsor.

The Professional Club is an organization in the college to promote the interest of those who are taking professional or pre-professional training. The membership is limited to those enrolled for law and medicine. Prominent speakers in the several professions, as well as members of the faculty, appear before the club from time to time. The members of the group carry on investigation and research and make reports before the group. The club made a tour to Lawrence and Kansas City this spring. Keith Sebelius is president of the organization. Floyd B. Lee is their faculty advisor.

Are you a lover of art? Why not join the Art Club then? It is an organization for students majoring in art, and open to others especially interested in art. The programs are built around serious studies in art appreciation. They are the ones we are to thank for the fine art exhibits that come and go during the school year. Anne Fankhauser is president of the Art Club. Mabel Vandiver and J. M. Strange are faculty sponsors for the group.





CUSTER HALL

WESLEY HALL

CAMP LEWIS



Top Row: WITTER, WILSON, LIPPERT, RUNYON, KING.
 Middle Row: SOLOMON, McGINNIS, VAN METER, WILLIAMS, MARTINSON, CALVERT, SCHEER.
 Bottom Row: DOBOSH, STREETER, REED, MOODY.

GRADUATE CLUB

The Graduate Club is an organization fostered by the Graduate Faculty of the college to furnish opportunity to graduate students on the campus for group identification. It is the purpose of the graduate club to stimulate its members to inform themselves of current trends on and off the campus; to provide them with facilities for social intercourse and for discussion of topics of common interest.

The discussion topics during the fall semester have been timely and stimulating. Under the leadership of the officers the club has been more active than in several years. The officers are:

Fall Semester

BETTY MARTINSON - - - - - President
 DREW A. DOBOSH - - - - - Vice-president
 NADYNE CALVERT - - - - - Secretary-treasurer

Spring Semester

N. G. MOODY
 VERNE LIPPERT
 MARY WILLIAMS

The most ambitious undertaking of the club during the year 1935-'36 has been the collection and publication of a research bulletin. Under the direction of Verne Lippert, chairman of the research committee, and Dr. Streeter, faculty adviser, the club will publish a classified list of the titles of all theses written this year for advanced degrees in institutions of all the states included in North Central Association territory.

The club has been richly entertained in the homes of each of the members of the graduate faculty. Though on leave from the campus, Dr. R. R. Macgregor has supplied the club with valuable assistance in its activities and addressed one of the December meetings. Dr. Reed, Dr. McGrath, Dr. Streeter, Prof. Rankin, and Dr. McGinnis have been very loyal to the club by their attendance of meetings and extension of hospitality, advice, and enthusiasm.



WHERE THEY LIVE

There are two residence halls for women and one for men at the college. Custer Hall houses more than eighty girls and is presided over by "Mother" McKenna. Wesley Hall houses nearly thirty-five girls and "Mother" Petit is the dorm matron. The college men have a somewhat unusual plan of housing. Camp Lewis, a former C. C. barracks, makes it possible for 125 men to stay in school by providing room and board at a minimum charge in exchange for labor on school projects. Hugh Farquharson, a graduate student, is supervisor of Camp Lewis under the direction of Dr. W. D. Moreland. Each of these three groups maintains a certain amount of organization and gives a limited number of parties each semester. They play a vital part in the lives of the students living therein.

The Music Department

The music department continues to thrive and grow. Prof. Henry Edward Malloy, head of the department, remains the center around which all music progress is made. Other instructors include Paul Beckhelm, instructor in piano; Lucille Felten, instructor in piano; Prof. Virgil V. Edmonds, band director, and Prof. Carl Malmberg, orchestra director.

Under the sponsorship of this department, many nationally known musicians have appeared here in concerts.

In October, Marian Kalayjian, pianist, Josephine Antoine, soprano soloist, and Kurt Brownell, tenor soloist, appeared in a concert.

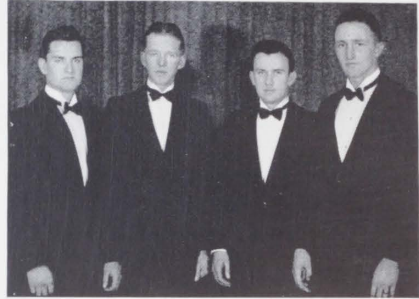
In March, Joseph Knitzer, with Harry Sukman as accompanist, presented a violin concert.

These concerts were an inspiration to all who heard them.

Members of the Girls' Glee Club, under the direction of Miss Lucille Felten, appeared in a home concert April 3. Other concerts were given in various western towns including Utica, Arnold, Plainville, and Hill City. The Glee Club this year consists of thirty-six members.



H. E. MALLOY, Music Director



Women's Quartet: KING, VAN DOREN, WILLIAMS, ADAMS.
Men's Quartet: VAN GUNDY, FLORA, CARSON, MEYER.

The Men's Glee Club, under the direction of Mr. Beckhelm, appeared in a home concert February 25. The Glee Club has taken three trips including Wakeeney, Oakley, Scott City, Dighton, Russell, Claflin, Osborne, and Woodston in their itinerary. Thirty-five boys are members of the club.

Members of the girls' quartet are: Mildred King, Ruby Ellen Van Doren, Lou Verne Williams, and Winifred Adams.

The men's quartet is composed of Dave Van Gundy, Leland Flora, Karl Carson, and Clinton Meyer.

Members of both quartets and the college trio, with special solo numbers, appeared at Dodge City, broadcasting for the Campus Toothpowder Company.

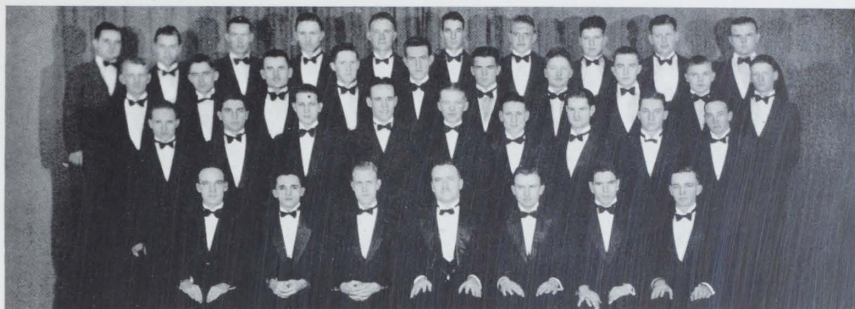
Music Festival Week this year proved to be one of the most successful ever held.

The opening program featuring Kathryn Meisle, contralto from the Metropolitan Opera Company, engaged the attention of all music lovers of the college.

The second feature of the Festival, "Dear Brutus," a fantasy in three acts, was presented by the Little Theatre on Monday evening. This is the first year anything of this sort has been used on the Festival program.

Tuesday evening the Kansas City Philharmonic String Quartet presented a very entertaining concert.

(Continued on page 79)



PERSONNEL OF WOMEN'S GLEE CLUB

WINNIE ADAMS
 BETH ATKINS
 AGNES ATWELL
 BETTY BROWN
 ELIZABETH BENTLEY
 ETHEL COOK
 FAYE CORWIN
 ANNE FANKHAUSER
 LOUISE FOOS
 JEAN FULLER
 NAOMI GRIFFITH
 MARYLEE HARVEY
 ERNESTINE HUBBARD

IZELLA JACKSON
 GUWENDOLA JOHNSON
 MILDRED KING
 RUTH McADOO
 HELEN McELROY
 JOY McKIE
 MARGARET PAXTON
 LOUISE PETERSON
 REBECCA RAGES
 HELEN GAIL SEAMON
 WILMA SHULL
 JOSEPHINE SIRE
 GWENDOLENE TOLAND

HOLLIS VAN DOREN
 BETTY WARD
 HELEN WELLS
 ANNA RUTH WISE
 FERN WRIGHT
 ELVA WYLEY
 EVELYN WOERNER
 LOU VERNE WILLIAMS
 JEANNE UNDERWOOD
 ELAINE WISE
 MILDRED WIEST
 MARY LOUISE WALKER
 BONNIE ZIMMERMAN

PERSONNEL OF MEN'S GLEE CLUB

GLENN BALMER
 EDWIN BARTLEY
 LEWIS BURFORD
 DEAN CARR
 KARL CARSON
 RUSSELL DANIELS
 BYRON DAVIS
 ADRIAN EICHMAN
 LELAND FLORA
 ROBERT FORD
 MAYNARD FOX
 GEORGE GALLOWAY
 GLENN GARTEN

IVAN HILL
 HARRISON HONDERICK
 LEE HULL
 JAMES KING
 JOHN KING
 PHILIP LAUVER
 HARRY MASON
 WILLIAM ZINSZER
 WILBUR MECKENSTOCK
 CLINTON MEYER
 RALPH McELROY
 MAC McVEY
 CLEO MORRISSETTE
 LEWIS PANKASKIE

ROBERT PRICE
 JAMES RITTENHOUSE
 FRANCIS ROE
 ELMER RUDOLPH
 PAUL SAUNDERS
 DONALD SCHOENFELDT
 REX SCHWEIN
 VAN SHAW
 LYLE SHERMAN
 HERBERT SMALL
 ERVIN STEVER
 CLAUDE SUMMERS
 DAVE VAN GUNDY



PERSONNEL OF ORCHESTRA

MRS. H. E. MALLOY
WINNIE ADAMS
CHARLES BAHL
BERNARD BRUNGGARDT
CURTIS BURGAN
RUTH BUTLER
DELLA BYRN
ALFRED CASWELL
CRYSTAL CHITTENDEN
ELEANOR CALVERT
SUSAN CALVERT
CARL CLINESMITH

BETTY DANIELS
SHIRLEY DAWES
ELBERT DEFOREST
HARLEY DOAK
ZELMA JANE FELTEN
ERNESTINE FIELDS
ROBERT GANTNER
JEAN GLENN
NAOMI GRIFFITH
VIOLETTE GROSSARDT
MARCIA HAHN
MARCUS HAHN

FRANCES HANSON
LUCILLE HOCH
ERNEST HOKE
RUTH KING
MILDRED KING
VERNON LONDON
CELESTE LOWREY
VIVIAN MECKEL
LOWELL POSTMA
ALAN RANKIN
TWILA REED
ANN REED
LAWRENCE ROMEISER

ADRAN SCHEER
ELMER SCHLEGEL
DONALD SCHOENFELDT
VIVIAN SYTMA
STELLA SCHLEGEL
VELMA UNRUH
HOLLIS VAN DOREN
RUBY ELLEN VAN DOREN
MARY LOUISE WALKER
LOU VERNE WILLIAMS
MILDRED WIEST
BONNIE ZIMMERMAN

PERSONNEL OF BAND

BETH ATKINS
FRED ALBERTSON
AGNES ATWELL
WINNIE ADAMS
JOE BARBO
HOLLIS BEEN
HORACE BUTLER
BETTY BLAKE
EDGAR BARKER
RUTH BUTLER
ALMA BERNDT
ISABEL BARKER
EARL BONDY
ROBERT BARTHOLIC
ELWOOD BARTLETT
CHARLES BAHL
LEWIS BURFORD
HAROLD BROWNLEE
WESLEY BURFORD

EDWIN BARTLEY
BERNARD BRUNGGARDT
CURTIS BURGAN
CASEY COCHRAN
ALFRED CASWELL
DEAN CARR
GORDON CASAD
ELEANOR CALVERT
FRANCES CANADY
NADYNE CALVERT
SUSAN CALVERT
ROY CANADY
JOHN CLAR
KARL CARSON
CARL CLINESMITH
JOHN DUNN
HARLEY DOAK
BYRON DAVID
GWENDOLINE DIMMITT

RICHARD DREILING
BERNARD EHRLICH
FRANCES FINCH
HAZEL FEITZ
ERNESTINE FIELDS
ROBERT FORD
ELBERT DEFOREST
EARL FISHER
ARNOLD FINCH
ESTHER GILPIN
GEORGIANA GRASS
JEAN GLENN
ROBERT GANTNER
GEORGE GALLOWAY
LAEL GILBERT
NAOMI GRIFFITH
IVAN HILL
ERNEST HOKE
LUCILLE HOCH

ANITA HAAG
MARGARET HEROLD
ISABEL HEROLD
ERNESTINE HUBBARD
MARCUS HAHN
WAYNE HOWELL
ELMER HAMPL
WAYNE HUNT
FRANK HENDERSON
CELESTE LOWREY
JACK LECUYER
GWENDOLEN LANE
PHILIP LAUVER
VIVIAN MECKEL
HARRY MIDDLETON
JULIET MONTAGUE
JOHN MITCHEM
ALLEN MITCHEM
RUSSELL MILLER
AUDREY NOSSAMAN

JAMES HOWER
RUTH KING
WAYNE MILLER
JUNE NEWTON
GERALD OPDYCKE
JOHN PAGE
ROBERT PRICE
MARGARET REED
ELMER RUDOLPH
CARL ROGG
LAWRENCE ROMEISER
JOY SMITH
ESTHER SWANSON
FRANCES STEPHENSON
STELLA SCHLEGEL
ELMER SCHLEGEL
VERNE SCHMITT
DON SMITHERMAN
DONALD SCHOENFELDT
CLAYTON SHEDIWETZ

The Music Department

(Continued from page 76)

An organ recital was given on Wednesday evening by Porter Heaps, radio artist, and organist at the New England Congregational Church in Chicago.

On Thursday evening, the college orchestra gave a concert. A special feature of this program was a Piano Concerto in A minor by Nadyne Calvert.

Friday evening the men's and girls' glee clubs united to present a choral concert. Paul Beckhelm's a cappella choir, a feature of the concert, was received with a great deal of enthusiasm.

The final program of the Festival on Saturday afternoon, was a concert by the college band. The band, under the direction of Virgil Edmonds, displayed great skill and talent.

The spring recitals always add a brilliant climax to the work done in the music department, and the preparation made for every recital brings due credit to the musicians this year.

On April 28, Paul Beckhelm, pianist, and Daisy Child Beckhelm, soloist, well-known to Fort Hays audiences,

appeared together in a recital which is an outstanding musical event of the year.

Another recital of unusual interest was that given by the String Trio, String Quartet, and the College Quintet, May 14.

The String Trio is composed of Mrs. H. E. Malloy, Miss Lucille Felten, of the faculty, and Alan Rankin, junior in the College. Members of the String Quartet include Mrs. H. E. Malloy, and Carl Malmberg, of the faculty, Bonnie Zimmerman, sophomore, and Alan Rankin, junior in the college. The Quintet consists of members of both previously mentioned groups.

Several graduate recitals were presented, displaying an unusual amount of talent.

Elaine Wise, pianist, and Ruby Ellen Van Doran, soloist, appeared on May 7.

On May 12, Marguerite Perkins, assisted by the College String Trio, appeared in a piano recital.

The last graduate recital was given by Nadyne Calvert on May 19.

THE COLLEGE TRIO

THE COLLEGE QUARTETTE



Glee Club Soloists: BONNIE ZIMMERMAN, MILDRED KING, WINNIE ADAMS, RUBY VAN DOREN, ELAINE WISE, HOLLIS VAN DOREN

GREEK GOVERNMENT

PAN-HELLENIC

The Pan-hellenic organization of the Fort Hays Kansas State College was organized December 12, 1925, for the purpose of promoting better cooperation and friendliness among the sororities. Its membership is made up of two senior representatives and one junior representative from each sorority and their faculty advisor and the Dean of Women. Pan-hellenic supervises rush week activities and makes all the necessary rules and regulations. Monthly meetings are held to discuss routine problems. Each semester, Pan-hellenic sponsors a Pan-hellenic dance.

The officers are:

MILDRED MARSHALL	President
THELMA KELLY	Secretary
DOROTHY BISSING	Treasurer

Other members are: Kathryn Fisher, Jeanne Underwood, Marvella Schridde, Anna Lou Galloway, Catherine Land, Leola Gustafson, Eva Woodruff, Ruth Frisbie, Emma Louise Havemann, Pauline Kelly, Erma Lowrey, and Anita Haag.

INTER-FRATERNAL COUNCIL

The Inter-Fraternal council of the Fort Hays Kansas State College was organized in 1932 for the promotion of cooperation and friendliness among the fraternities. The council underwent a reorganization this spring in order to enable more efficient operation.

The officers are:

CLARENCE KAHLER	President
KARL CARSON	Vice-president
JEROME STEGMAN	Secretary-treasurer

Other members are: Ed Bender, Alan Rankin, Gene Niewald, Ward Shull and Boyd McCandless.



PAN-HELLENIC

Top Row: UNDERWOOD, HAVEMANN, GALLOWAY, WOODRUFF, FISHER.
Bottom Row: BISSING, LOWREY, GUSTAFSON, MARSHALL, KELLY.

INTER-FRATERNAL COUNCIL

NIEWALD, BROWN, STEGMAN, RANKIN, KAHLER, McCANDLESS, E. BENDER, CARSON.





A Campus Drammer: "Two Old Hens"

CAST:

Mrs. Camp Lewis, a large woman of very independent bearing whose clothes fit rather tightly due to a recent increase in weight. She has a slight inferiority complex which she tries to cover up by appearing nonchalant. Her clothes are simple and clean but still bear a rural appearance and cut.

Mrs. Greek, also a large woman of uncertain age and more uncertain bearing whose clothes fit somewhat loosely due to a loss of weight in the past few months. There are small lines beginning to appear at her eyes and dark circles, very dark, can be seen under them. She has a sleepy, tired look due to her many family cares. Her clothes are of the latest style, with a fraternity pin holding together a rip which should have been sewed up sometime ago. She has a superior attitude.

SCENE: At Mrs. Greek's home. A large spacious place with eleven children playing in and out of it.

As the curtain rises, Mrs. Camp Lewis is seen approaching her neighbor's, Mrs. Greek, apparently to make one of those infrequent calls which seem necessary to keep peace in the two families. However, the two women are very well acquainted.

Mrs. Greek: (all smiles) Darling! How are you?

I haven't seen or heard a thing about you for so long. Won't you come in?

Mrs. Camp Lewis: I'm so glad to see you. I haven't seen anyone for so long.

Mrs. Greek: Oh, you brought your knitting. Do sit down.

Mrs. Camp Lewis: Yes, the boys wear their propaganda out so fast. They seem to catch it on barbs. It just keeps me busy, knitting them new duds.

Mrs. Greek: How are all your children, my dear?

Mrs. Camp Lewis: (rather timidly) We-ll, I really don't know so awfully much about them. You know, their nurses, Hugh and W. D., have complete charge of them. I guess though that they don't always sleep well at night. (Changing the subject.) And how are all yours?

Mrs. Greek: They have their ups and downs, of course, but really my dear, you don't realize how fortunate you are in having no girls. When I think of the worry my girls have caused me, it just councils me.

(Continued on page 126)

ALPHA SIGMA ALPHA

OFFICERS

President - - - - - KATHRYN FISHER
 Vice-president - - - - - MARGARET OSHANT
 Secretary - - - - - RITA JACOBS
 Treasurer - - - - - MARVELLA SCHRIDDE

Colors—Crimson and white.

National Magazine—Phoenix

Founded at Virginia State Teachers College 1901

Tau Tau at Fort Hays, March 17, 1928



ACTIVES

KATHRYN FISHER	MILDRED MURRAY
JEAN FULLER	MARGARET OSHANT
EUNICE GAINES	LOUISE PETERSON
ARLENE HARRISON	MARVELLA SCHRIDDE
LUCILLE HOCH	FRANCES STEPHENSON
MARION HOLZMEISTER	RUTH TWENTER
RITA JACOBS	JEANNE UNDERWOOD
GUWENDOLA JOHNSON	MARJORIE WALLERSTEDT
ELIZABETH LEIDIGH	MILDRED WIEST



IN FACULTATE

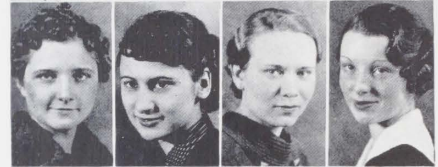
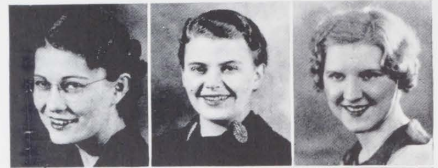
MARY MAE PAUL



PLEDGES

HELENE BARRY	HELEN HIGDON
FLORA LEE COCHRAN	GLADYS NICHOL
MARY JANE CAMPBELL	BETTY WARD
LUCILLE WEILAND	

BARRY	COCHRAN	FISHER
HOCH	HOLZMEISTER	JACOBS
JOHNSON	MURRAY	OSHANT
PETERSON	SCHRIDDE	TWENTER
UNDERWOOD	WARD	WIEST





DELTA SIGMA EPSILON

OFFICERS

President - - - - - MILDRED MARSHALL
 Vice-president - - - - - ELAINE BITTER
 Secretary - - - - - RUTH ATWOOD
 Treasurer - - - - - NELLA MAE MARSHALL

Colors—Olive Green and Cream

National Magazine—Shield

Founded at Miami University, Oxford, Ohio

Rho Chapter installed October 2, 1925



ACTIVES

RUTH ATWOOD	MILDRED MARSHALL
HELEN FRANCES BICE	NELLA MAE MARSHALL
ELAINE BITTER	ETHEL MARTIN
KATHRYN BODMER	JOY McKIE
RUTH COX	JERALDINE NEDROW
ZELMA JANE FELTEN	JOSEPHINE OWENS
JANE FLOOD	ALBERTA PAGE
ANNA LOU GALLOWAY	RUTH POLSON
RUTH BAKER-HINES	CARMEN REINHARDT
PAULINE HUXMAN	JOY SMITH
IZELLA JACKSON	DOROTHY STEHLEY
KATHRYN LAND	WAVA WRIGHT



IN FACULTATE
 MRS. THELMA HRUZA



PLEDGES

ADA FICKEN	MARY LEE HARVEY
FRANCES FICKEN	JONETTE JONES
REBECCA GALLOWAY	HELEN SHAW
JUNE GAMET-SCHOENFELDT	GWENDOLENE TOLAND
ESTHER GOLTJ	EVELYN ZINSZER

HINES	BICE	BITTER	COX	FELTEN
GALLOWAY	GOLTJ	HARVEY	NEDROW	FLOOD
HRUZA	HUXMAN	JACKSON	LAND	MARSHALL
MARTIN	McKIE	OWENS	PAGE	POLSON
REINHARDT	STEHLEY	SHAW	TOLAND	ZINSZER



KAPPA PHI

OFFICERS

President - - - - -	WINNIE ADAMS
Vice-president - - - - -	LOIS MEYER
Secretary - - - - -	STELLA SCHLEGEL
Treasurer - - - - -	OLIVE GRANT
Corresponding Secretary - - - - -	ELAINE WISE
Chaplain - - - - -	HAZEL RABOURN

Founded at University of Kansas, 1906

Psi Chapter installed 1933

Colors—Blue, Green, and White

Magazine—Candle Beam



ACTIVES

MARGARET BARTHOLOMEW	FLORENCE JOHNSON
ELAINE BITTER	MARGUERITE JENNISON
MARGARET BRETNALL	MILDRED KING
SERENA BROWN	ALICE LAVERY
MYRTLE BURDITT	ESTHER LOUDERBAUGH
RUTH BUTLER	NORMA McMULLEN
BETTY BROWN	LOIS MEYER
LENORA COATES	MARY POPP
ELVA CURRENCE	HAZEL RABOURN
RUTH DODRILL	LOIS REIMER
ISABEL DODRILL	MABEL ROBERTSON
CLIFFIE MAE ENFIELD	HELEN SHAW
FRANCES FINCH	VERA SPRINGFELDT
MARGARET FLEAGLE	IRIS STEVENSON
RUTH FRUSHER	STELLA SCHLEGEL
FAYE GARTEN	MARY LOUISE WALKER
EVELYN GARTON	ELAINE WISE
JEAN GLENN	ANNA RUTH WISE
OLIVE GRANT	INEZ YEAGER
KATHRYN HARRELL	ALMA KLEINT
LAVERNE HARRIS	MYRTLE CARTER
RUTH HILDEBRAND	WINNIE ADAMS
MERLE HUMPHREY	ETHEL COOK
MARY GRACE JAMES	ELLEN LOUISE REPLOGLE



SPONSOR

Mrs. R. C. WALKER



PLEDGES

HELENE BARRY	BERTHA SCHLEGEL
ANNE FANKHAUSER	ILA FERN FELLERS
VERNA RUTH HARRIS	BETH ATKINS
HELEN BLAKESLIE	REBECCA RAGES
ESTHER SCOTT	JUNE NEWTON



ADAMS	ATWATER	BARRY	BITTER	BRETNALL
BURDITT	BUTLER	CARTER	COATES	CURRENCE
DODRILL	FANKHAUSER	FLEAGLE	FRUSHER	GARTEN
GARTON	GLENN	GRANT	HARRELL	HARRIS
HUMPHREY	HILDEBRAND	KING	KLEINT	LAVERY
MEYER	McMULLEN	RABOURN	ROBERTSON	LOUDERBAUGH
		SCHLEGEL	SHAW	
SPRINGFELDT	WALKER	WISE, A.	WISE, E.	YEAGER

SIGMA SIGMA SIGMA

OFFICERS

President - - - - - THELMA KELLY
 Vice-president - - - - - BERNICE VAN PELT
 Secretary - - - - - FERN VINCENT
 Treasurer - - - - - EMMA LOUISE HAVEMANN

Founded at Farmville, Va., 1898

Alpha Gamma Chapter installed in 1925

Colors—Royal Purple and White

National Magazine—Triangle



ACTIVES

HELEN BEAM	MARY LOCKER
KATHRYN BELLMAN	CATHERINE MASTERS
EMMA LOUISE HAVEMANN	MARGARET REED
THELMA KELLY	BERNICE VAN PELT
PAULINE KELLY	FERN VINCENT
LOUISE LOCKER	TILLIE YOUNG



IN FACULTATE

PEARL G. CRUISE



PLEDGES

AVIS ALEXANDER	FRANCES HULL
VIRGINIA BEASON	ERNESTINE MELLOR
ALMA BERNDT	ESTHER SWANSON
IDA ELEANOR CHITTENDEN	VIRGINIA WALTON
VELMA DAUNER	VIRGINIA WELLS
ESTHER GILPIN	IRIS WHITTEN



BEAM	BELLMAN	BERNDT	
CHITTENDEN	GILPIN	HAVEMANN	KELLY, P.
	KELLY, T.	LOCKER, L.	LOCKER, M.
MASTERS	REED	VAN PELT	VINCENT
	WHITTEN	WALTON	YOUNG

SIGMA ALPHA IOTA

OFFICERS

President - - - - - NADYNE CALVERT
 Vice-president - - - - - WILMA SHULL
 Secretary - - - - - MARTHA BLEW LINE
 Treasurer - - - - - LUCILLE FELTEN
 Sargeant-at-Arms - - - - - HOLLIS VAN DOREN

Colors—Crimson and White

National Magazine—Pan Pipes

Founded at Ann Arbor, Michigan, on December 1, 1904

Alpha Pi Chapter installed in 1931



ACTIVES

WINNIE ADAMS	GUWENDOLA JOHNSON
RUTH BUTLER	MARTHA BLEW LINE
NADYNE CALVERT	MARGUERITE PERKINS
ZELMA JANE FELTEN	WILMA SHULL
LOUISE FOOS	VELMA UNRUH
JEAN GLENN	HOLLIS VAN DOREN
FRANCES HANSON	RUBY VAN DOREN



IN FACULTATE

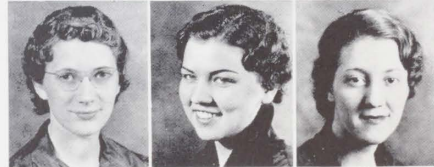
LUCILLE FELTEN	CLARA MALLOY
MAUDE GORHAM	



PLEDGES

MILDRED KING	LOU VERNE WILLIAMS
HELEN WELLS	ELAINE WISE

ADAMS	BUTLER	CALVERT	
FELTEN	GLENN	HANSON	
JOHNSON	LINE	PERKINS	SHULL
FOOS	UNRUH	VAN DOREN, H.	
VAN DOREN, R.	WELLS	WILLIAMS	





THETA SIGMA UPSILON

OFFICERS

President - - - - - DOROTHY BISSING
 Vice-president - - - - - PAULINE SCHERER
 Secretary - - - - - CLARA NICHOLAS
 Treasurer - - - - - RUTH SCHILLER



Colors—Rose and Silver
National Magazine—Torch

Founded at Emporia Teachers College 1920
 Mu Chapter installed in 1929



ACTIVES

DOROTHY BISSING	CLARA NICHOLAS
ANITA HAAG	LAVINA ROW
CELESTE LOWREY	PAULINE SCHERER
ERMA LOWREY	RUTH SCHILLER



IN FACULTATE

ROSELLA McCARROLL



PLEDGES

NEVA BROWN	MAXINE HIGLEY
VIRGIE CAMP	EVELYN JONES
HELEN CHILDERS	NORA KING
PAULINE FLEMING	NADYNE LIX-LONG
RUTH GARLOW	MILDRED RICE
ESTHER GOODIN	PAT SCHAFFER

BISSING	BROWN	CAMP	CHILDERS
FLEMING	GARLOW		GOODIN
HAAG	JONES	LOWREY, E.	LOWREY, C.
LONG	NICHOLAS		RICE
ROW	SCHILLER	SCHERER	SCHAFFER



PI KAPPA SIGMA

OFFICERS

President - - - - - LEOLA GUSTAFSON
 Vice-president - - - - - EVA WOODRUFF
 Secretary - - - - - ALTA CLINE
 Treasurer - - - - - MARGARET BRETNALL

Colors—Turquoise Blue and Gold

National Magazine—Laurel

Founded at Ypsilanti, Michigan, 1894

Alpha Mu Chapter installed October 25, 1930



ACTIVES

MARGARET BRETNALL	RUTH FRISBEE
ALTA CLINE	LEOLA GUSTAFSON
FRANCES FINCH	ALMA KLEINT
EVA WOODRUFF	



IN FACULTATE

MARY WILLIAMS



PLEDGES

LEONA BRAY	BERNICE HEMPHILL
WILMA FOX	MARY HORACEK
PHYLLIS HINKHOUSE	ALBERTA LEADER
MARGARET MULLEN	



BRAY	BRETNALL	CLINE
FRISBEE	GUSTAFSON	HORACEK
KLEINT	WILLIAMS	WOODRUFF

MY BOY THIS IS A PLEASURE



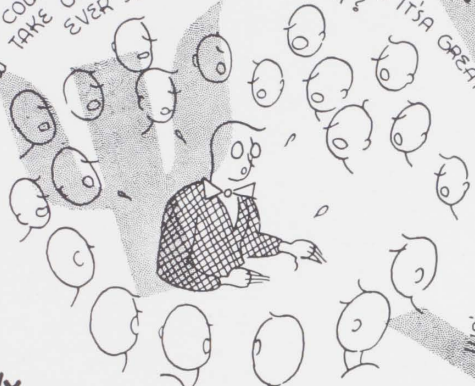
1 The Greeting

FELLAS MEET JOHNNIE FLUNK-HAUTER FROM PUNKINVILLE.. MR. FLUNKHAUTER THIS IS MR. GRIDY OUR FOOTBALL THIS IS MR. & MR. PREXY OUR STUDENT COUNCIL PRESIDENT, & MR ETC. ETC.



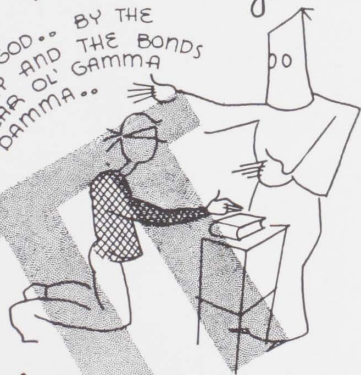
2 The Meeting

YOU'LL NEVER REGRET IT.. NOW JUST WEIGH THE FACTS.. WE'VE GOT ALL THE ATHLETES.. OF COURSE YOU'LL FIND HEELS IN ALL FRATS.. NOW TAKE OUR CHAPTER AT MICHIGAN EVER SEE OUR PLEDGE PIN? IT'S A GREAT HONOR..



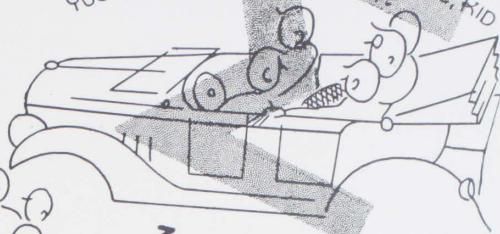
4 The Heating

I SWEAR BY GOD.. BY THE COUNTRY AND THE BONDS OF DEAR OL' GAMMA DAMMA..



1 The Sheeting

I HEAR YOU'RE THE BEST LIL HALFBACK IN WESTERN KANSAS, JOHNNIE OL' BOY! WE GOTCHA SWELL DATE TONITE, KID YOU KNOW... BEAUTY QUEEN!



3 The Felting

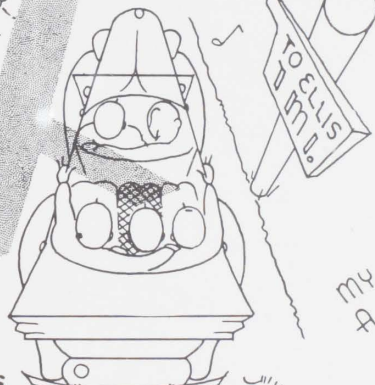
WE GOTTA DATE WITH FLUNKHAUTER FROM PUNKINVILLE

SORRY, WE HAVEN'T SEEN HIM SINCE RUSH WEEK STARTED



5 The Cheating

WE'RE TAKIN' JOHNNIE OVER TO ELLIS AND WE AINT GONNA BRING HIM BACK 'TIL HE IS OUR MAN..



6 The Retreating

MY BOY THIS IS A PLEASURE



8 The Beating

Emperore for a week

BRAD

PHI SIGMA EPSILON

OFFICERS

President - - - - - EUGENE NIEWALD
 Vice-president - - - - - FLORIAN HOLM
 Secretary - - - - - ELLIS REINHARDT
 Treasurer - - - - - RALPH HUFFMAN

Colors—Rose and Blue

Founded at Emporia, Kansas, February 15, 1910

Zeta Chapter installed at Hays, November 7, 1930



ACTIVES

EUGENE ALLEN	OSCAR MITCHELL
TOM BROWN	CLEO MORRISSETTE
ROY COCHRANE	TOM MOSIER
JOHN DUNN	JOE MOSS
FLOYD FOLEY	EUGENE NIEWALD
PETER HAAS	WIMBERLY PIATT
EDWARD HERMAN	THOMAS PIVONKA
RALPH HINKLE	ELLIS REINHARDT
FLORIAN HOLM	WARD RIEGEL
RALPH HUFFMAN	FRANCIS ROE
CLARENCE ISBELL	LEROY SCOBY
COLVIN KINDSCHI	DALE SHELLHASS
MARION McDONALD	WARD SHULL
RALPH McELROY	CLIFFORD SINCLAIR
DENNIS McKEE	RICHARD STAAB
WILBUR MECKENSTOCK	DALE WEEMS
CHESTER MITCHELL	ALBERT YALE



IN FACULTATE

Dr. R. R. Macgregor



PLEDGES

JOHN BARKLEY	FRANK HENDERSON
ARTHUR DeLONG	KENNETH PARKS
HARRY HARMS	PAUL STENGER
VERNON STUART	

SINCLAIR	DUNN	FOLEY	
HAAS	HARMS	HUFFMAN	ISBELL
KINDSCHI	McKEE	MITCHELL	
MORRISSETTE	NIEWALD	REINHARDT	ROE
SHELLHAAS	SCOBY	YALE	





PHI MU ALPHA

OFFICERS

- Supreme Councilman - - - - - ALAN RANKIN
- President - - - - - KARL CARSON
- Vice-president - - - - - ERVIN STEVER
- Secretary - - - - - ARNOLD McGRATH
- Treasurer - - - - - CLAUDE SUMMERS
- Historian - - - - - GEORGE GALLOWAY
- Warden - - - - - HERMAN SCHWARTZKOPF

Established at New England Conservatory, 1898

Alpha Phi Chapter at Fort Hays, May 10, 1927

Colors—Red and Black

Magazine—Sinfonian



ACTIVES

- | | |
|-----------------|---------------------|
| KARL CARSON | ALAN RANKIN |
| VIRGIL EDMONDS | BENJAMIN RHOADES |
| GEORGE GALLOWAY | HERMAN SCHWARTZKOPF |
| MARCUS HAHN | LYLE SHERMAN |
| H. E. MALLOY | ERVIN STEVER |
| ARNOLD McGRATH | CLAUDE SUMMERS |
| HERBERT MEULI | LOWELL TRULL |
| MAURICE VAUGHN | |



IN FACULTATE

- | | |
|---------------|----------------|
| PAUL BECKHELM | VIRGIL EDMONDS |
| H. E. MALLOY | CARL MALMBERG |



PLEDGES

- | | |
|---------------------|-------------------|
| RUSSELL DANIELS | ROBERT MALCOLM |
| LYNN DAVIS | VIVIAN MECKEL |
| ARNOLD FINCH | VERNON SCHMIDT |
| SHELburne HENDRICKS | MAC McVAY |
| HARRISON HONDERICK | DONALD SMITHERMAN |
| COURTNEY KEARNS | LYMAN WOOSTER |
| PAUL WYLAND | |

-
- | | | | | |
|----------|----------|--------------|-----------|-----------|
| BECKHELM | CARSON | DANIELS | GALLOWAY | HENDRICKS |
| MEULI | HAHN | KEARNS | MALCOM | |
| MALLOY | MALMBERG | McGRATH | McVAY | MECKEL |
| RANKIN | RHOADES | SCHWARTZKOPF | ROMEISER | SHERMAN |
| SUMMERS | STEVER | TRULL | UNDERWOOD | |
| VAUGHN | WOOSTER | WYLAND | FORD | HONDERICK |



PHI DELTA CHI

formerly
KAPPA BETA TAU

OFFICERS

President - - - - - ED BENDER
 Vice-president - - - - - JEROME STEGMAN
 Secretary - - - - - JOHN HADLEY
 Treasurer - - - - - BRAINARD ANDERSON

Colors—Black and Silver

Beta Chapter Installed May 3, 1936



ACTIVES

BRAINARD ANDERSON	JOHN HADLEY
ED BENDER	LAWRENCE MILLER
HERB BENDER	WILLIAM MOG
CLYDE BILLINGS	HAROLD RANDALL
ROY BILLINGS	WARD SAVAGE
DELWIN CODDINGTON	RUDOLPH SKUBAL
FLOYD CONRY	MELBURNE SMEDLEY
WALTER GAUMER	JEROME STEGMAN

ARNOLD TRITT



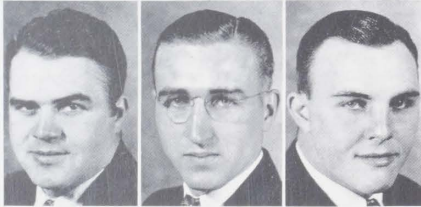
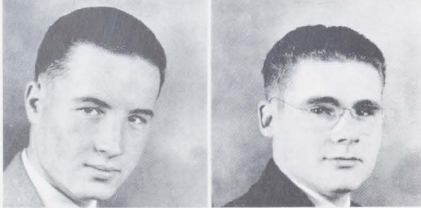
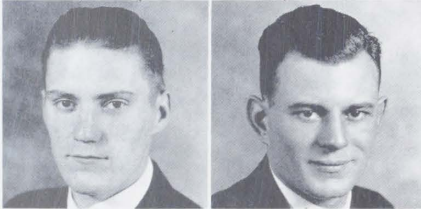
PLEDGES

GEORGE ADAMS	CLARENCE LOWRY
BERNARD EHRLICH	JAMES RITTENHOUSE
LEE HOPPE	LESLIE SMITH
GORDON LEWIS	CLEMENT WISE



SPONSOR

WALTER WALLERSTEDT



BENDER, E.	BENDER, H.	HADLEY
SMEDLEY		MOG
MILLER		TRITT
RANDALL	STEGMAN	SKUBAL

SIGMA TAU GAMMA

OFFICERS

President - - - - - Boyd McCANDLESS
 Vice-president - - - - - JOHN WILLCOXON
 Secretary - - - - - ERNEST DEINES
 Treasurer - - - - - ARNOLD SCHOENTHALER

Founded at Warrensburg, Missouri, June, 1920

Eta Chapter at Fort Hays, January, 1926

Colors—Purple and White

Magazine—Saga



ACTIVES

CLAIR ANDERSON	BILL OWENS
FORREST BODMER	WALTER PARK
CASEY COCHRAN	WEIR PIERSON
ERNEST DEINES	CLAIR ROYCE
VERNAL DUNCAN	DONALD SCHOENFELDT
HARLIE HAAG	ARNOLD SCHOENTHALER
EUGENE HOLM	ELMER SPOMER
CLARENCE KAHLER	CARL STOFFER
ROLAND KAHLER	GAYLE STOVER
JAMES KUNTZ	FRED TOLAND
BOYD McCANDLESS	HENRY UPPENDAHL
DELOYD MITCHELL	JACK WARD
FLOYD MOTLEY	MAURICE WAELDIN
ORVILLE NOTHDURFT	VERNON WAELDIN
DEAN O'BRIEN	JOHN WILLCOXON



PLEDGES

ALFRED CASWELL	DON FREED
JOHN CHITTENDEN	LEE HULL
KENT COLLIER	FRANCIS LOVITT
TONY DEBES	EUGENE MOON
JERRY FORD	CECIL NORMANDIN

LLOYD SIDENER

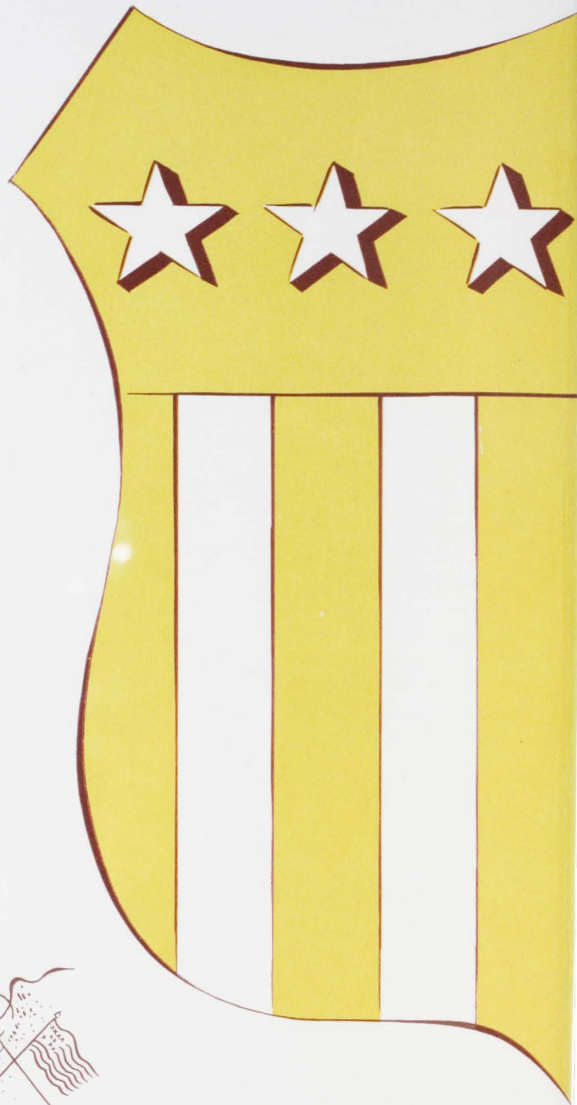


IN FACULTATE

W. D. MORELAND



ANDERSON	CARDONA	COCHRAN	DEINES
DUNCAN	GUEST	HAAG	JONES
KAHLER, C.	KAHLER, R.	McCANDLESS	MITCHELL
OLDER	OWENS	PARK	SCHOENFELDT
SCHOENTHALER	SPOMER	STOFFER	STOVER
UPPENDAHL	WAELDIN	WARD	WILLCOXON

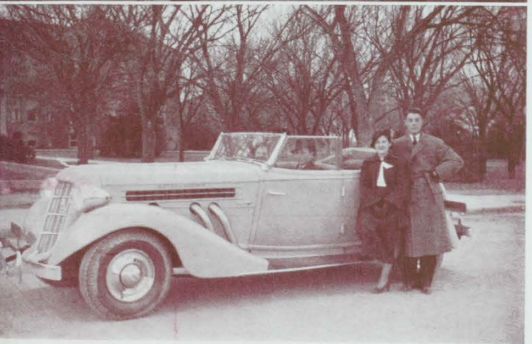




REVELRY







KALEIDOSCOPE

The Walker sisters . . . Sigma Tau party, find the jug . . . Where's Mid and Stever . . . The Scoby's and Rotrock's step out . . . Free mustaches . . . House cleaners at the library . . . Five Alphas . . . Andy in the printshop . . . Off to a party, at least, off . . . The Alphas throw a dinner dance . . . From the science hall dome, Oh yeah . . . A Phi Sig formal . . . Queen Annie and her loyal subjects visit the Senator . . . London Bridge on a big scale . . . Read your fortune? . . . Freshies go swimming . . . The Homecoming King (Maurice) and Queen (Kathryn).

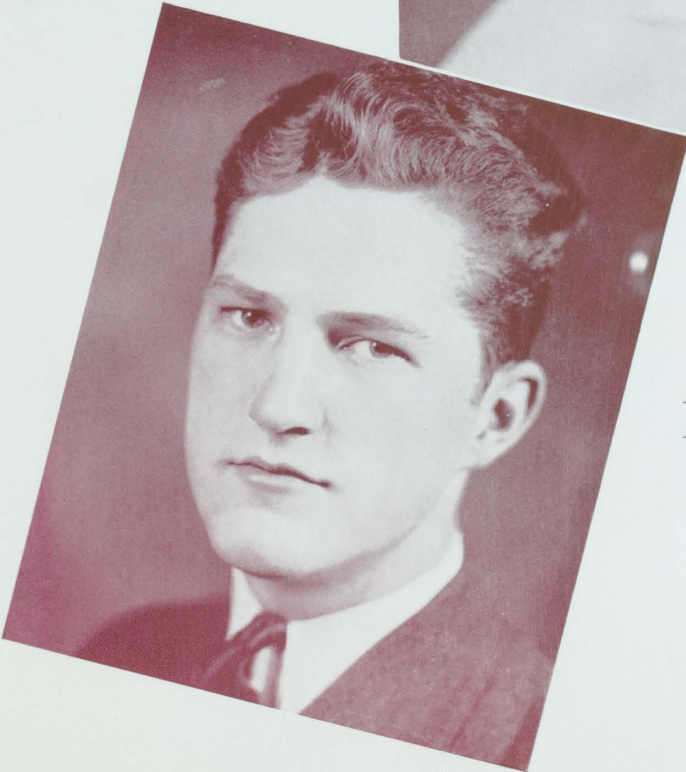


ANNA LOU GALLOWAY
Reveille Queen



CLARA NICHOLAS
Achievement

HAZEL RABOURN
Popularity

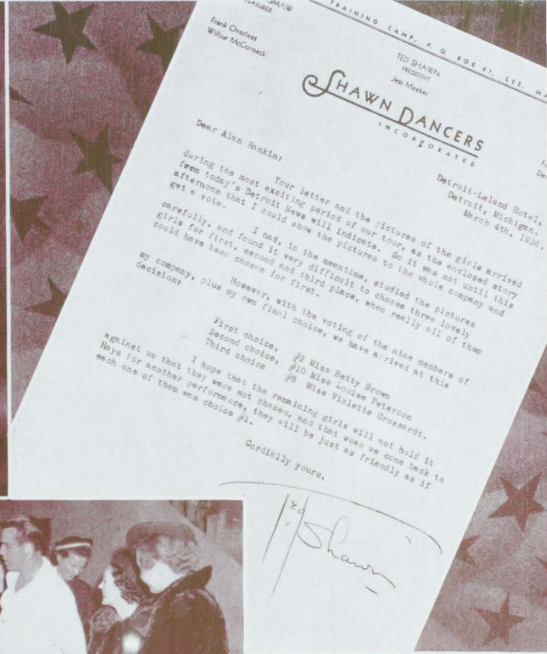


ALAN RANKIN
Achievement



BETTY BROWN
Beauty

LOUISE PETERSON
Beauty



CELESTE LOWREY
Popularity



WINNIE ADAMS
Reveille Queen



VIOLETTE
GROSSARDT
Beauty



CAMPUS CELEBRITIES

EMMA LOUISE HAVEMANN, Personality plus. Prominent campus figure.
WALTER PARK, Manager Leader, former Council president.
ANNA LOU GALLOWAY, Reveille Queen, prominent figure.
ARTHUR LEAS, Student Council, prominent athlete.
DOROTHY BISSING, Theta president.
HERMAN SCHWARTZKOPF, Senior president, star athlete, Council president.



BURTIS TAYLOR, Student Council, prominent Camp Lewisite.
WINNIE ADAMS, Kappa Phi president, swell dancer, campus sport.
FLOYD BALMAN, Freshman president, prominent campus figure.
ESTHER LOUDERBAUGH, Y. W. president, campus figure.
RICHARD STAAB, our all-conference basketball captain.
JANE FLOOD, campus pepster, swell gal.



KARL CARSON, Phi Mu president, prominent musician.
EUGENE NIEWALD, Phi Sig president, football, Junior president.
HAZEL RABOURN, Popularity Queen, Assembly Officer
GAYLE STOVER, Manager Reveille, campus figure.
CLARA NICHOLAS, Achievement Winner, Student Council.
BOYD McCANDLESS, Leader Editor, Student Council, Scholar.







IN MEMORY OF
IDA ELEANOR CHITTENDEN

1917 «» 1936



It is with mixed feelings of pleasure and regret that this book is completed and distributed for your critical eye to peruse; pleasure that an enormous job is over and regret that we weren't born a year later so we could have had a shot at next year's book which in all probability will be on the activity fee. We are offering no alibis for this one. Since it is impossible to please every one, we are hoping that there are as many people who like it as there are those that don't.

In closing, we wish to express appreciation for the cooperation given by the companies who printed and engraved this book and to Brad Thompson of Topeka; Walter Wallerstedt, James R. Start, and Shirley Baird, of the college, who have been particularly helpful.

On the next twenty or so pages you will find the advertisements of certain businesses that have made this book possible. Without them there would have been no 1936 Reveille. Let's show our appreciation to them by patronizing them.

ALAN RANKIN
GAYLE STOVER



Help Yourself to Better Health With

Pastuerized Milk

Chocolate Milk

Orangeade

Pure Rich Cream

*Modern methods and a sanitary plant combine to give you
the best in wholesome dairy products*

L K Dairy Association

HAYS, KANSAS

PHONE 406

312 EAST NINTH ST.



"The Store Where Every Penny Counts"

SCHOOL SUPPLIES
TOILET GOODS
NOTIONS
HOME SUPPLIES
STATIONERY
CANDIES

A. L. Duckwall Stores

*We Welcome
College Trade*

*Service-Quality
Price*

For Good Food and Clean Recreation Come to

THE TRIANGLE CLUB

Pool and Billiards

STANLEY WHITE, Mgr.

113 East 11th

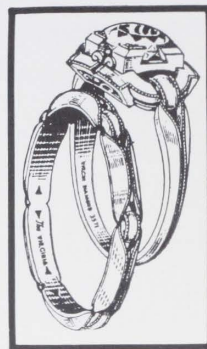
Phone 62



Western Kansas' Finest Jewelry Store

Headquarters for matched diamond engagement and wedding rings. A wide variety of styles and sizes at prices as low as \$25.00 for a matched set of two rings.

Dependable watches in Hamilton, Elgin, Waltham, and Gruen. Latest yellow gold round and baguette designs \$24.75 and up.



Fraternity and Class jewelry, rings and crests of all kinds. Our prices are usually lower than your organization headquarters charge.

Try Our Optical and Repair Service

THOLEN JEWELRY COMPANY

The Home of Reliability

H. J. Tholen, Registered Optometrist

804 Main St.

Phone 358

*Bakers of the Finest
Breads and Pastries*

ALWAYS ASK FOR

Quality Milk Bread

*Try Our Sweet Rolls
and Pastries*

For Special Orders Call Us
PHONE 45

*Modern Products From a
Modern Bakery*

QUALITY BAKERY

117 W. Eleventh

Laundry and Dry Cleaning

Monuments

Your Patronage Appreciated

F. J. HOCH

Phone 412

Hays

Kansas

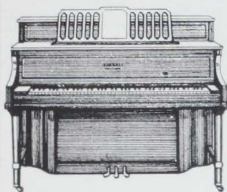
DR. C. J. WILSON

Dental Surgeon

Building and Loan Bldg.

Office 401 Phones Res. 1090

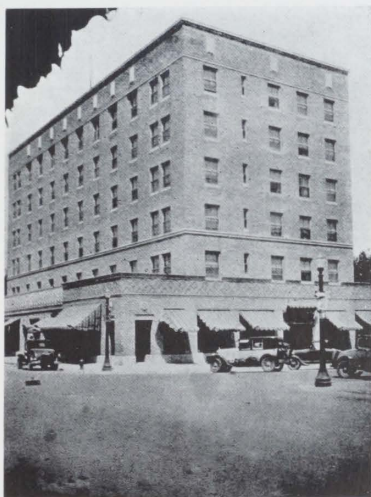
Czeskleba Music & Radio Service



PIANOS— RADIOS— REFRIGERATORS—
Baldwin Stromberg-Carlson Frigidaire
Kimball Fairbanks-Morse Fairbanks-Morse
Gulbransen Zenith Ice O'Matic

Phone 167

110 W. 11th



HOTEL LAMER



Lamer Drug Store
Lamer Coffee Shop



*Western Kansas'
Leading Hotel*

TIGER

Headquarters for
Hair Cuts and Barber Work
Meet here and talk it over with
the gang

Red's Clean Shop
GAY TILLOTSON, Prop.



**New Method Cleaners
and Hatters**

Phone 944 1011 Fort St.



LARZALERE BAKERY

The Home of

Larzalere Bread

Cakes and Rolls

PHONE 640

117 West Eleventh Street

Hays, Kansas

“When Time Means Money Our Service Pays”

SHINGLES	PLASTER BOARD	BRICK
POSTS	ROOFING	SEWER TILE
CEMENT	CORRUGATED IRON	PLYWOOD
PLASTER	MOULDINGS	INSULATION
FLUE LINING	SASH AND DOORS	METAL LATH
WALL BOARD	LIME	RIDGE ROLL

Build-Remodel-Repair

USE QUALITY MATERIAL

LUMBER-COAL

THE TREAT-SHAFFER LUMBER CO.

HENRY HAVEMANN, *Manager*

Hays, Kansas

208 West Ninth Street

Phone 74

WIESNER'S DEPARTMENT STORE

A. A. WIESNER

"The Place Where You Feel at Home"

Ladies' Ready-to-Wear, Dry Goods, Clothing,
Shoes, Notions, Trunks and Suit Cases,
Groceries and Meats

KELVINATOR

MAYTAG

REFRIGERATORS

WASHERS

"The Largest Department Store in Western Kansas"

Hays, Kansas

Dry Goods

Grocery

Phone 88

Phones 740-741

Shoe Re-Building and Dyeing

If It's Done to Shoes, We Do It
Bring or Send Them to

SCHLEGEL SHOE SERVICE

113 West 10th Hays, Kansas

BUTLER'S

Furniture and Undertaking

GENERAL ELECTRIC
RADIOS, REFRIGERATORS
AND WASHERS

The Hays

Coca-Cola Bottling Co.

The Pause that Refreshes

PHONE 301

Nep's Super Service

FIRESTONE
TIRES AND BATTERIES
SHELL GASOLINE

*Car Washing and
Greasing*

Phone 400

Hays, Kansas



THE FIRST NATIONAL BANK

HAYS, KANSAS

The Oldest Bank in Ellis County

GEYER BROTHERS

"Where Collegians Congregate"

High Quality Drugs, Candies,
Cosmetics, and Drug Sundries

Special Fountain and
Luncheonette Service
Prescription Specialists

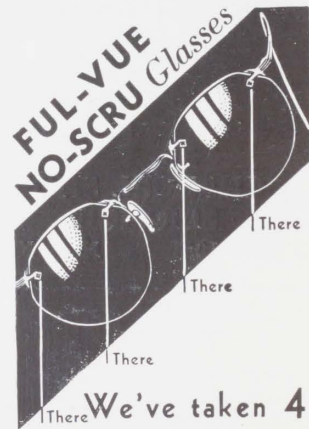
GEYER BROTHERS

Druggists

*"We Are Anxious to
Serve You"*

We Deliver

Phone 5



**We've taken 4
screws out of your
new glasses!**

Dr. W. F. Czeskleba

Phone 167

Hays, Kans.



CHOICE
SELECTIONS

*In Complete Lines
of*
Drugs, Sundries
Cosmetics
Kodaks, Candies
Prescriptions,
etc.

HARKNESS PHARMACY

FOX STRAND



The Home of Big Pictures



THE RECREATION CENTER FOR THE COLLEGE STUDENTS





AT THE HEAD OF THE PARADE

We believe that Our Store is qualified to give you leading service in every department.

Four Registered Pharmacists to fill your prescriptions . . . competent advice on toilet goods and cosmetics . . . large stocks of merchandise . . . complete fountain service featuring Franklin XX ice cream . . . Rexall Agency which means "The Best in Drug Store Goods—the Best in Drug Store Service."

These things, coupled with an earnest desire to serve you in a helpful, friendly way lead us to believe that it pays to get the ABC habit.



ABC DRUG CO.



LADIES' READY-TO-WEAR

at

POPULAR PRICES



LUCILLE

Dress Shop

122 West 9th

Phone 321

Phone 53

Home Phone 302

GEO. PHILIP & SON

Dealers in

HARDWARE

COAL AND GAS HEATERS AND RANGES

PAINT, OIL AND GLASS

CUTLERY

Eighth and Main

Hays, Kansas

To the Class of 1936

We extend our congratulations and sincere good wishes for the future.

**THE HAYS CITY
FLOUR MILLS**

*Manufacturers and Distributors
of*

Semolino Flour

Golden Rod Flour

Pikes Peak Products

FRAZER'S

Smart Shop

**LADIES'
READY-TO-WEAR
MILLINERY AND SHOES**

Hays

Kansas

Cole's



Store

The Hays Friendly Store

Phone 799

112 W. Eleventh St., Hays, Kansas

**Fancy Groceries and
Quality Meats at Great
Savings**

FARMERS STATE BANK

HAYS, KANSAS

Capital	\$50,000.00
Surplus	\$50,000.00

MEMBER

Federal Deposit Insurance Corporation. Each deposit account insured up to \$5,000.00, under Federal Deposit Insurance Plan.

We solicit your account, have money to loan, and can take care of all loans consistent with sound banking.

We want you to take advantage of the service we offer; and if not a customer of this bank, come in and get acquainted.

The Largest Bank in Ellis County

The Farmers State Bank—the Friendly Bank—the Bank

Where You Feel at Home

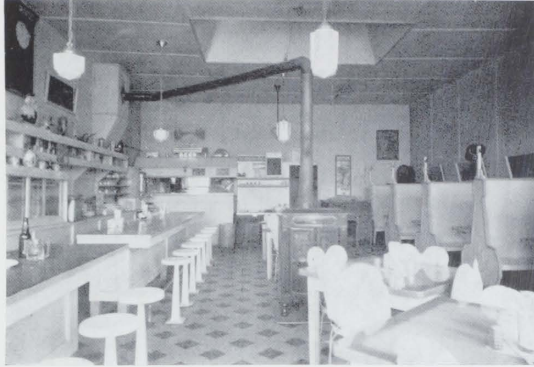


*An Exclusive College Book Store, Built Especially for
Use of College Students*

- | | | |
|--------------------------|----------------------------|---------------------|
| Note Books | Greeting Cards | Typewriter Supplies |
| Art Supplies | Brief Cases | Party Goods |
| Typewriters | Gymnasium Supplies | Magazines |
| Fountain Pens | Social Stationery | Inks |
| | Business Stationery | |
| College Books (New—Used) | Everything Used in College | |

CAMPUS BOOK STORE

Just off the Campus on Seventh Street



ELITE CAFE

We Appreciate Your Patronage

Reasonable Prices for the College Student

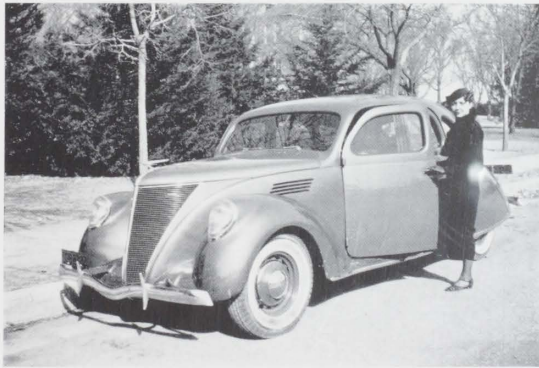
*If not at Home, Eat Here and
Feel at Home*

West Tenth

MRS. JOHN SAHLI, Proprietor

Hays, Kansas

Watch the Fords Go By



V8
Ford

V12
Lincoln-
Zephyr

The Lincoln-Zephyr

TWENTER MOTOR COMPANY

Hays

LaCrosse

EKEY STUDIO

Finest of
PHOTOGRAPHS

Distributors of
AGFA-ANSCO PRODUCTS
ALBUMS, FILMS, FRAMES
AND SUPPLIES



“Where There Is a Picture to Be Made,
EKEY Can Make It”



1936 Reville Pictures
by

R. E. EKEY

Hays

- - - - -

Kansas



ST. ANTHONY'S HOSPITAL

HAYS, KANSAS

SISTER M. ALOYSIUS, R. N.

Superintendent



This space reserved and paid for by
THE ACTIVE STAFF

The
GOLDEN BELT
Creamery & Ice Company



**KINGS KWALITY ICE CREAM
GOLDEN BELT BUTTER
PURE CRYSTAL ICE**



HAYS, KANSAS

DON'T SAY ICE CREAM

Say

KING'S KWALITY ICE CREAM

"Fit for a King"

Made Only From the Very Purest Products Under the
Most Sanitary Conditions

Served in All of the Leading Drug Stores and Cafes
in Western Kansas



1936 MASTER CHEVROLET

The Only Complete Low Priced Car

O'LOUGHLIN MOTOR SALES

CHEVROLET AND OLDSMOBILE

Hays and Ellis

Over 45 Employees Boosting for the Tigers



STYLE

You Will Always Find the Newest
 Creations in Wearing Apparel for
 Men, Women, and Children at
 This Store

*If You Really Want the New Things
 You Will not Regret a Visit to—*

THE CLASSIC-STORE

ESTABLISHED JAN. 1, 1900

South Main

Hays, Kansas

MIRIAM MODES

Exclusive Ready-to-Wear,
 Novelties and Gifts

MIRIAM WIGHT PERRY

Lamer Hotel Phone 688
 Hays, Kansas

*The Smart Thing at the Right Price
 for the College Girl*

SAFEGWAY STORES

Every Article Sold Bears
 an Unqualified Guarantee

PHONE 839

Hays - - - Kansas

A Pleasing
Gift Department

Lincoln Paints
and Varnishes

WINTERS HARDWARE

"Quality Hardware"

Phone 16

Hays

810 Main

Natural Gas Ranges
Perfection Oil Ranges

Automatic Washers
and Ironers

HAYS CITY DRUG STORE

For Your Needs in
DRUGS, TOILET GOODS,
REFRESHMENTS

"The Corner Drug Store"

Phone 348

Hays, Kansas

Massachusetts Mutual Life Insurance Co.

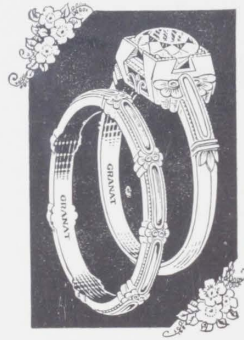
84 Years Successful
Underwriting

Organized 1851

M. W. EASTLACK,
District Agent

Hays, Kansas

Phone 445



Matched Diamond Sets
—Watches—

Expert Watch Repairing

MORRISON JEWELRY STORE

Phone 152

107 West 10th

Compliments of
JAYHAWK HOTEL
 Topeka, Kansas

*For your comfort and convenience—
 Adequate and correct lighting—an aid to
 better school work.*



GRASS BROS.

Good Things to Eat



Hays - - Kansas

T. G. REED & SONS

*Exclusive
 Groceries and Meats
 Fresh Fruits and
 Vegetables*

MODERN

Phone 480 Hays, Kansas

We Specialize in

**PERMANENT
 WAVING**

Modern Permanent Wave Shop
 Over Basgall's Store Call 998

Baxter's Flower Shop

Flowers to Express Your Sentiment
Telegraph Delivery Service
 Phone 130

**SWEETBRIAR
 SHOP**

*Always the Latest Fashions
 at Popular Prices*

Rose Beauty Shop

Courteous and Efficient Operators
 Phone 392 for Appointment
 106 E. 8th Street

A P R O P H E C Y



IN LATER years—
when you will be out of school and active
in the affairs of business — you will view
these days of planning and preparing your
Annual with a smile of gratification in the
fact that you selected “The House of
Impressions” as your printer.

During the 35 years of our business history
we have produced many Annuals and are
happy to number among our most loyal
customers many who first became ac-
quainted with our facilities and services
when they were “on the Annual Staff.”

To you of the 1936 REVEILLE Staff we
express our appreciation. We have enjoyed
working with you and hope the pleasure
has been mutual.

**THE
McCORMICK-ARMSTRONG
COMPANY**

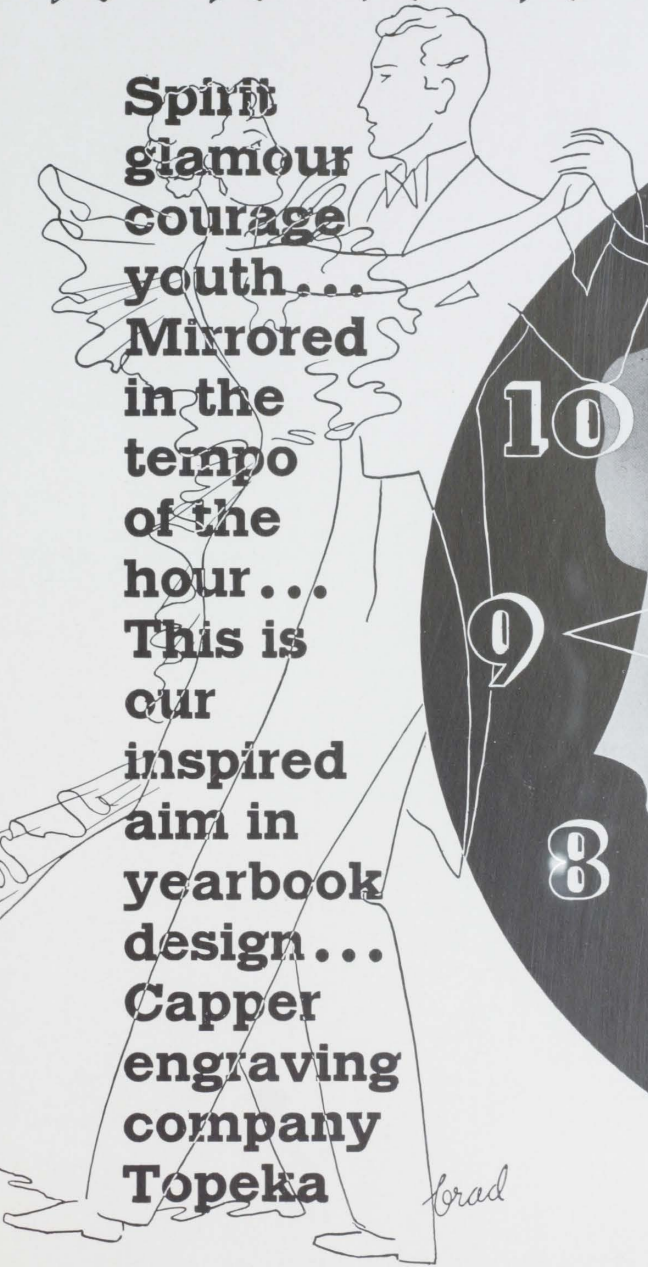
WICHITA, KANSAS

Printers - Lithographers

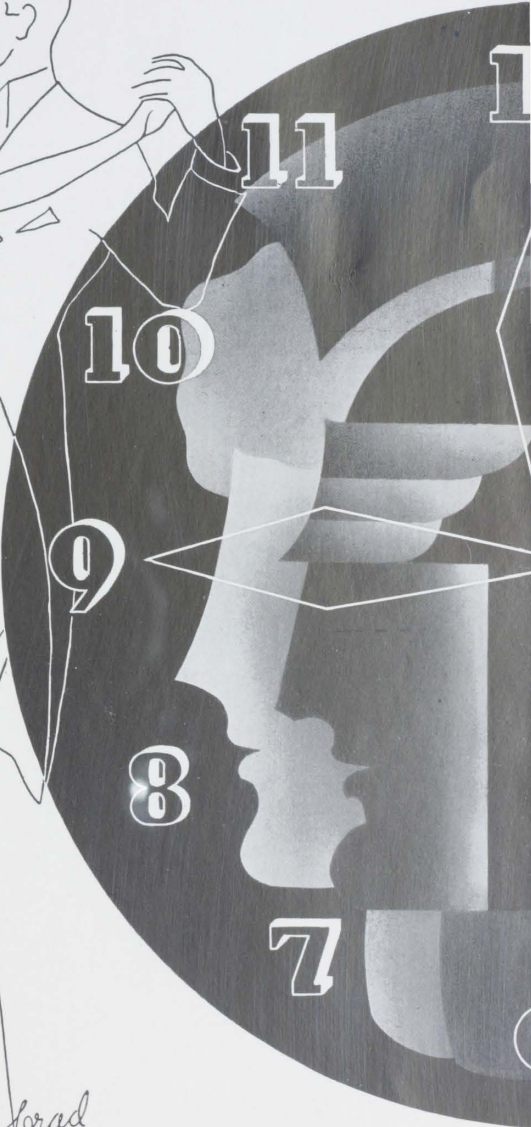
**EXTRA
SPECIAL
SPECIAL
SPECIAL**



**Spirit
glamour
courage
youth...
Mirrored
in the
tempo
of the
hour...
This is
our
inspired
aim in
yearbook
design...
Capper
engraving
company
Topeka**



lorad



A CAMPUS DRAMMER

(Continued from page 81)

Mrs. C. L.: (Very, very sweetly) But girls are such a comfort about the campus. And darling, I really wouldn't pay any attention to what people say about Alpha and Delta.

Mrs. Greek: (Bristling) And just what do people say about them?

Mrs. C. L.: (A little cattily) Well, dear, everyone must admit that they never seem to get along. They are always getting their lines tangled when they go fishing for the same sucker. But I guess you have to "Gechter man."

Mrs. Greek: Yes, I'm afraid that is true. But they both work so hard, you know, and the year is such a rush season and they're always getting their teas and q's crossed. They're so ambitious, they always try to outbid each other.

Mrs. C. L.: You'll never have to worry about Pi Kap quarreling. She's the quietest little thing.

Mrs. Greek: (Sadly) Pi Kap is really my biggest worry. She just doesn't seem to get anywhere. And she was such a healthy baby, too! She's the puniest of all my girls, now.

Mrs. C. L.: How is Tri Sig getting along after her serious illness?

Mrs. Greek: It's really remarkable how Tri Sig recovered. You'd never know her for the same sickly child she was in September. You know, we thought she'd never live through the winter. All the other girls were so worried, it just seemed as though they couldn't talk of anything else but her dreadful condition. But those rushing exercises the doctor had her take helped her worlds. She gained thirteen pledges right away!

Mrs. C. L.: Didn't you have Pi Kap take the rushing exercises, too?

Mrs. Greek: (Shaking her head sadly) Pi Kap just doesn't seem to be able to take them right. She gains a few pledges at a time during the year, then commencement is such a strain she loses all the ground she has gained.

Mrs. C. L.: Well, I sympathize with you. But my own children are so healthy. It must be the Stinemetz of Birrer they drink. Why do you know, during the coldest spell, they chopped holes in the ice in the creek to take baths?

Mrs. Greek: (Giggling) I did hear rumors to that effect. But I said, "Noel, noel, a thousand times noel," I knew dear, sensible Mrs. Camp Lewis would never knowingly allow her children to do such strange things.

Mrs. C. L.: (With a Rohwer of protest) Well, at least they don't have chronic colds, like little Phi Sig does. By the way, how are Phi Sig and Kappa Beta?

Mrs. Greek: I must remember to make a good resolution for Phi Sig. Poor dear! His little nose is always so red! I must dress him more warmly. Little Kappa Beta is such a tiny fellow. It's so much fun to watch him imitate the bigger boys.

Mrs. C. L.: I really must be going. The boys will be back soon, and will expect me home. They're out hunting offices, you know.

Mrs. Greek: Do you have that trouble too? My boys like to hunt. It's their favorite occupation. And little Sigma Tau is such a little fiend at it. He goes after them for all he's worth. When it's his open season, he goes about the campus armed to the teeth with pats on the back, trying to bag a few of the bigger offices. Phi Mu is pretty bad about that, too, and Phi Sig has finally caught the hunting spirit.

Mrs. C. L.: I'll never forget how excited my boys were when they bagged more offices than yours did last fall. But tell me, darling, do you have as much trouble as ever with Phi Mu and Sigma Tau fighting?

Mrs. Greek: (Indulgently) The little dears, I always said that Phi Mu and Sigma Tau were too much alike ever to get along with each other. They even have the same diseases. Why, both of them had Charlie-horse this winter and such severe attacks! They're such little hogs. They both want to play with the publications at the same time and they have a contest to see who can gain the most pledges in the shortest time.

Mrs. C. L.: I hate to rush off but I have my meals to cook.

Mrs. Greek: Getting meals is such a problem, isn't it? My children are rather finicky about what they take on. But Kappa Phi, goodness how that girl has gained! Perhaps it's because she's such a good church girl. But do tell me, what are you having tonight?

Mrs. C. L.: Schwein, you know, the boys just love pork. Some fowl, Dickey-bird. A new kind that I'd never heard of before. Also some Cole-slaw, some tomato Soukup and Newberry pie for dessert.

Mrs. Greek: Howell can they Meckel out on such light fare?

Mrs. C. L.: Oh, they do Wright well, thank you. But really, I must be running on.

Mrs. Greek: (Sweetly) I'm so glad you came darling. It's been such a pleasant afternoon. (To herself) Like (censored) it has.

AUTOGRAPHS

★



TAPS





