

Fort Hays State University

FHSU Scholars Repository

DC-HUG '18

Presentations

Oct 15th, 3:30 PM - 4:15 PM

Check Your Dashboard, Your Gauges May Be High!

Phillip Fitzsimmons

Southwestern Oklahoma State University, phillip.fitzsimmons@swosu.edu

Janet Croft

Rutgers University, mythlore@mythsoc.org

Follow this and additional works at: <https://scholars.fhsu.edu/dc-hug18>



Part of the [Scholarly Communication Commons](#), and the [Scholarly Publishing Commons](#)

Recommended Citation

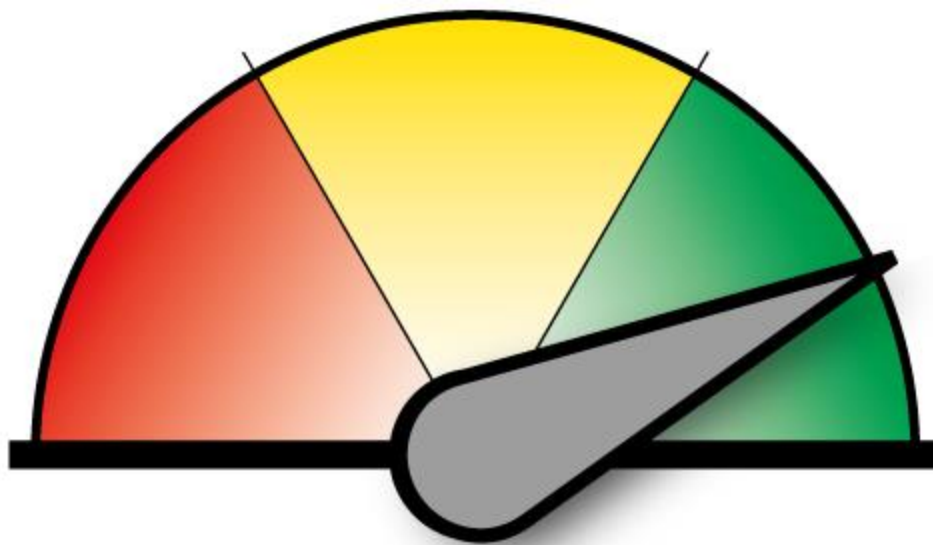
Fitzsimmons, Phillip and Croft, Janet, "Check Your Dashboard, Your Gauges May Be High!" (2018). *DC-HUG '18*. 19.

DOI: 10.58809/EWZR6182

Available at: <https://scholars.fhsu.edu/dc-hug18/dchug18/information/19>

This Event is brought to you for free and open access by the Forsyth Library at FHSU Scholars Repository. It has been accepted for inclusion in DC-HUG '18 by an authorized administrator of FHSU Scholars Repository. For more information, please contact ScholarsRepository@fhsu.edu.

Check your Dashboard, Your Gauges Might be High!



Phillip Fitzsimmons

Reference and Digitization Librarian
Southwestern Oklahoma State University
phillip.fitzsimmons@swosu.edu

Janet Brennan Croft

SCI Liaison and Librarian for Copyright
and Disability Services
Rutgers University
mythlore@mythsoc.org

In our presentation...

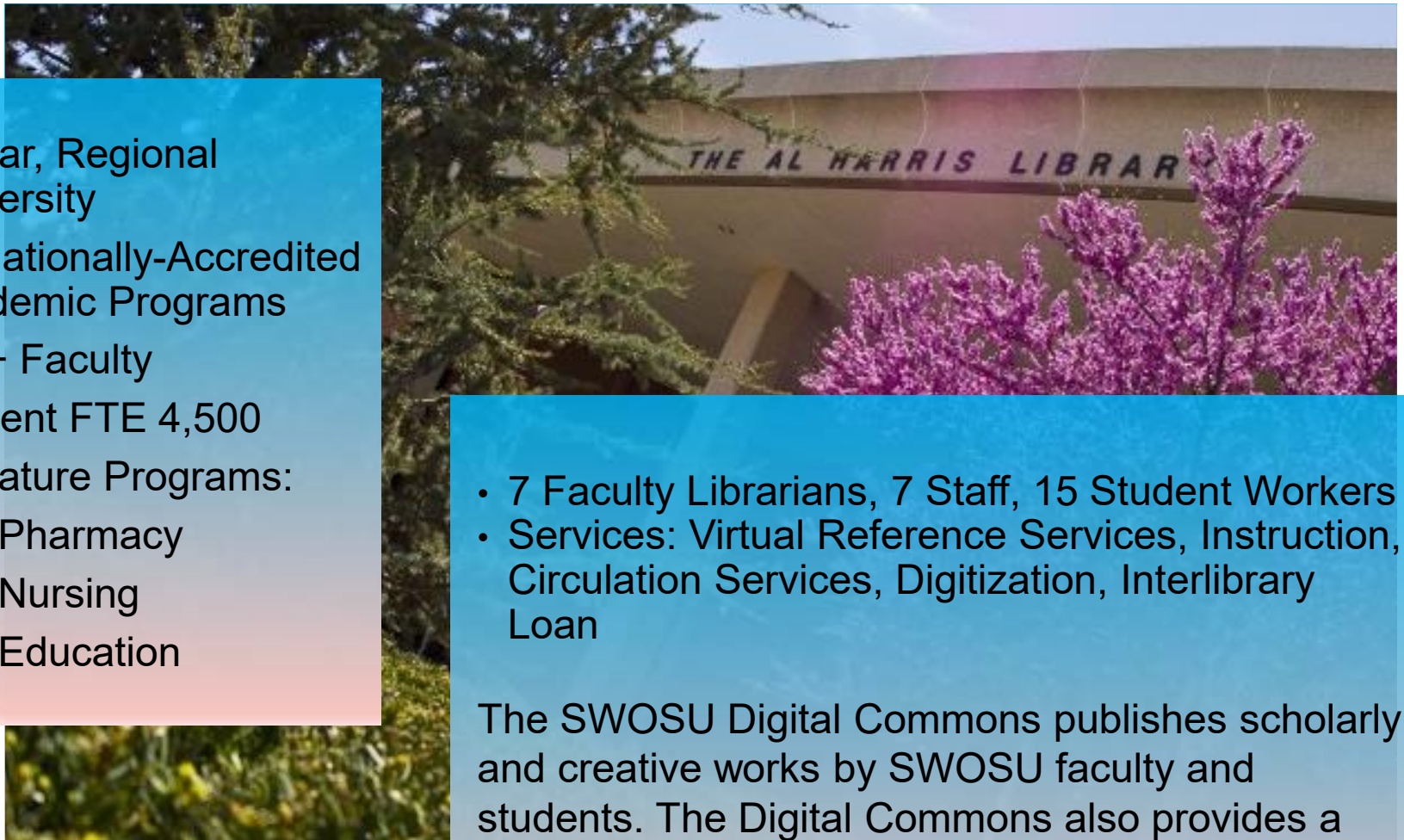
- Janet Croft, Editor of *Mythlore*, will discuss the differences between her former way of producing a predominantly print journal to doing the work digitally using the Digital Commons editor's platform. She will describe advantages and disadvantages to using the platform. This is an opportunity for Institutional Repository administrators to ask concrete questions about the learning curve and experience of a seasoned journal editor who has made the transition to using the Digital Commons editor's platform.
- Phillip Fitzsimmons, the administrator of the SWOSU Digital Commons <https://dc.swosu.edu/>, will discuss the relevance of the use of the Digital Commons platform to the goals of the University. He will use download- and viewer-usage Dashboard maps to show the increasing international readership of the journal and what it can mean to contributors.

About SWOSU

- 4-Year, Regional University
- 15 Nationally-Accredited Academic Programs
- 200+ Faculty
- Student FTE 4,500
- Signature Programs:
 - Pharmacy
 - Nursing
 - Education

- 7 Faculty Librarians, 7 Staff, 15 Student Workers
- Services: Virtual Reference Services, Instruction, Circulation Services, Digitization, Interlibrary Loan

The SWOSU Digital Commons publishes scholarly and creative works by SWOSU faculty and students. The Digital Commons also provides a wide array of materials celebrating the history of the University and the diverse peoples and cultures of western Oklahoma.





A show of hands

- My institution uses Digital Commons
- My institution is thinking about using Digital Commons
- My institution used to use Digital Commons
- What's Digital Commons?

This time last year ...



- During this Show-and-Tell session, I'm saying something like "I think *Mythlore* is wonderful."
- We had been uploading *Mythlore* since July 2017. Adding a periodical external to SWOSU was new for us.
- Now we have relationships with three external organizations.

A short history

- The Al Harris Library has had an Institutional Repository (IR) since 2008. Our first platform was with ebrary.
- In 2015 Gen. Thomas Stafford (Retired Astronaut) donated his archive to the library. We contracted with Bepress because we needed a better platform that would increase discoverability for our IR to present the incoming collection to scholars.
- I approached Janet Croft about digitizing and posting *Mythlore* on the SWOSU Digital Commons <https://dc.swosu.edu/mythlore/> because I had been involved with the Mythopoeic Society for a few years and knew Janet from when we both worked at the University of Oklahoma.
- It has been a great opportunity for everyone involved.

Mythlore

On SWOSU Digital Commons: <https://dc.swosu.edu/mythlore/>

 Mythopoeic Society

mythLORE

A Journal of J.R.R. Tolkien, C.S. Lewis,
Charles Williams, and Mythopoeic Literature

Home About FAQ My Account

Journal Home

Join the Mythopoeic Society

About This Journal

Aims & Scope

Editorial Board

Policies

Submit Article

Most Popular Papers

Mythlore Art

Receive Email Notices or RSS

Select an issue:
All Issues

Search
Enter search terms:

in this journal

Advanced Search

Mythlore Index Plus

ISSN: 0146-9339

Southwestern Oklahoma State University

Home > Mythlore

Mythlore: A Journal of J.R.R. Tolkien, C.S. Lewis, Charles Williams, and Mythopoeic Literature is a scholarly, peer-reviewed journal published by the Mythopoeic Society that focuses on the works of J.R.R. Tolkien, C.S. Lewis, Charles Williams, and the genres of myth and fantasy. The full text of *Mythlore* from 2002 onward is available in several electronic databases from Gale, Ebsco, and ProQuest. *Mythlore* is also indexed in the Annual Bibliography of English Language and Literature, the Modern Language Association International Bibliography (MLA), and other sources.

See the [Aims and Scope](#) for the statement of editorial purpose of the journal.

THE HISTORY OF MYTHLORE

Mythlore was founded in 1969 by the late Glen GoodKnight, Founder of the Mythopoeic Society. He edited its first 84 issues, with the exception of issues 18-23, which were edited by Gracia Fay Ellwood. In its early years, *Mythlore* was a "fanzine" that, in addition to scholarly articles, columns, and book and media reviews, included a great deal of art work, poetry, and other creative work. Over the years, the articles became more and more exclusively scholarly, and the creative work and fiction reviews moved to sister publications like *Mythprint* and *Mythic Circle*. When Dr. Theodore Sherman of Middle Tennessee State University assumed the editorship with issue 85 in 1999, *Mythlore* completed its transformation into a refereed scholarly journal publishing only articles and reviews. At that time, its format also changed from 8 1/2" x 11" to 6 1/2" x 9". Janet Brennan Croft, currently of Rutgers University, became editor in 2006 and switched to a double-issue format. The journal was published in two double issues per year, in approximately April and November through Spring 2013. In Fall 2013 the double issue numbering was dropped and electronic subscriptions became available for individuals.

Issue 132

Volume 36, Number 2

Spring/Summer 2018

Editor

Janet Brennan Croft, Rutgers University

Archivist

Phillip Fitzsimmons, Administrator of Mythlore and Society Archives, Southwestern Oklahoma State University

Editorial Advisory Board

Verlyn Flieger, University of Maryland, College Park

Charles Huttar, Hope College

Peter J. Schakel, Hope College

Rev. John W. Houghton, The Hill School, Pottstown

Richard C. West, University of Wisconsin, Madison

Donna R. White, Arkansas Tech University

Current Issue: Volume 36, Number 2 Issue 132, Spring/Summer (2018)

Special issue on divination in fantasy, co-authored with Emily E. Auger

Issue Art

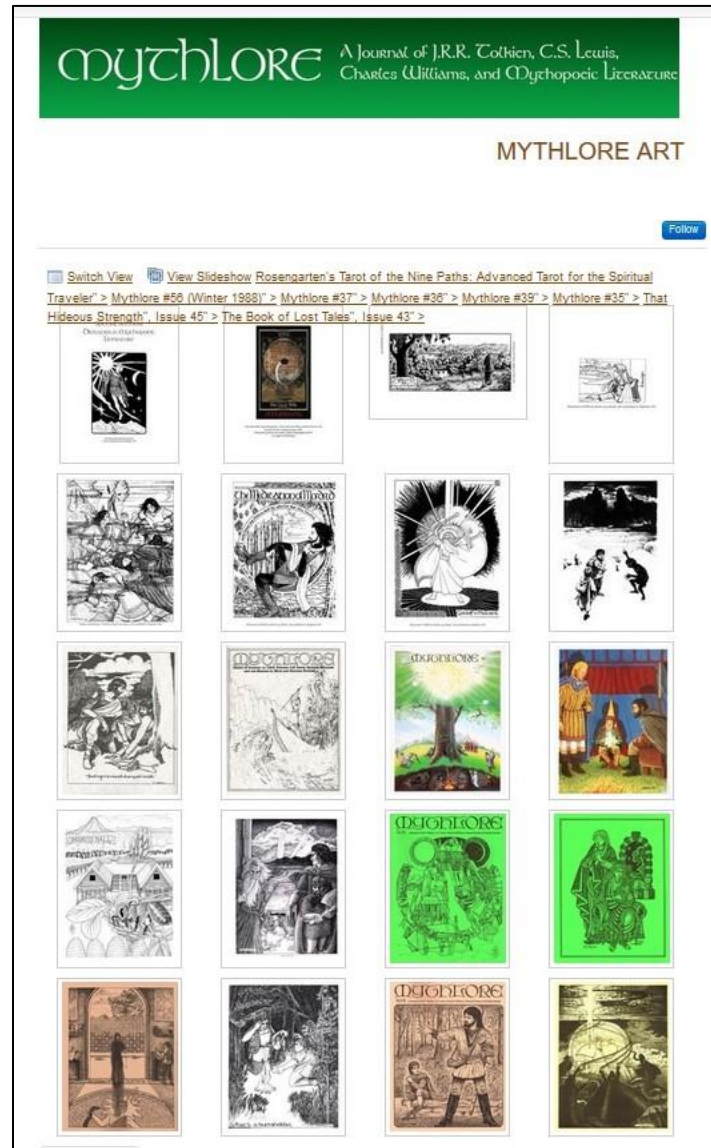
Mythlore Art, Issue 132
Pat Wilkne, *Unknown*, and Arthur Rosen Garten

 **mythLORE**
A Journal of
J.R.R. Tolkien, C.S. Lewis, Charles Williams,
and Mythopoeic Literature

 SPECIAL SECTION:
OMNIVISION IN MYTHOPOEIC
LITERATURE

Mythlore Art

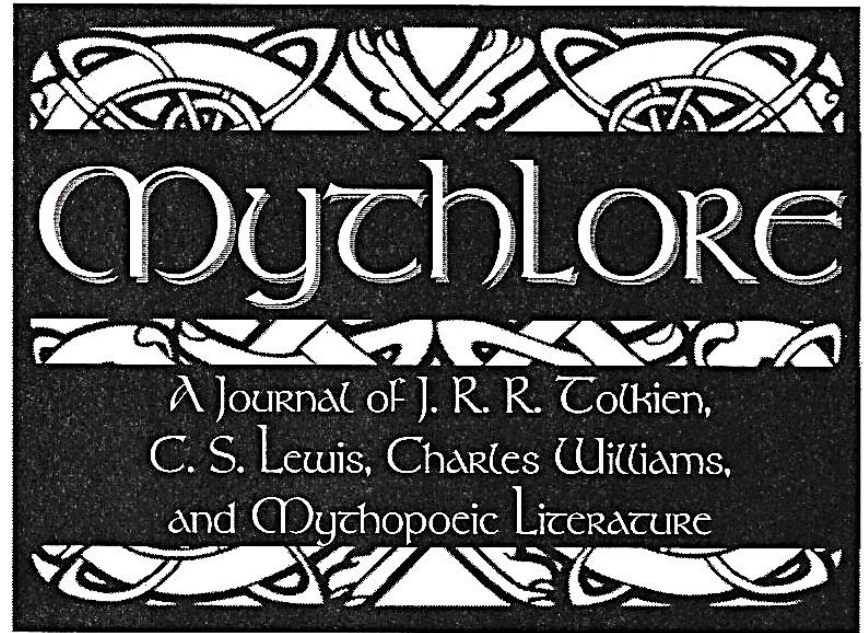
On SWOSU Digital Commons: https://dc.swosu.edu/ml_art/





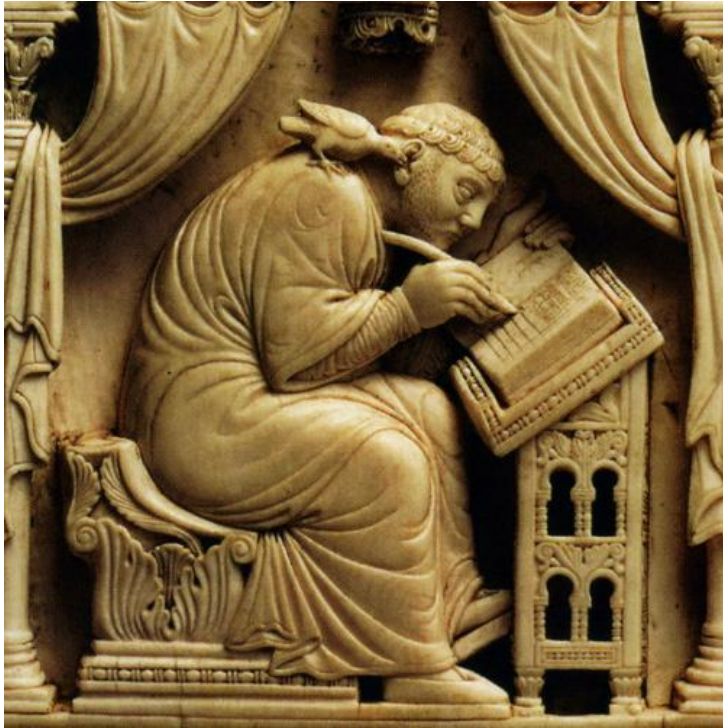
Now let's hear from Janet ...

- First issue: January 1969
- Change in format: 1999
- Early issues hand-typed and mimeographed; can be challenging to OCR!
- Issues of determining rights; no formal author or artist agreements used till early 2000s
- Index created 2007; has been through several iterations and is now free online and includes other Society publications
- A few early issues not online yet; issues 9-38. 43-50, and 82-current online, exclusive of the two-issue embargo



THE OLD WAYS...

ARE NOT ALWAYS BEST



- How I used to do things
 - Mail sorter
 - Excel sheets
 - Routing tags stapled to papers
 - Wrike (task management program)
 - System of electronic folders stored on USB
 - Emails

- Problem of items “falling through the cracks”
- Problem of changing my primary email address
- Duplication of effort: Tracking both physical and electronic items AND email



USING THE BEPRESS PLATFORM

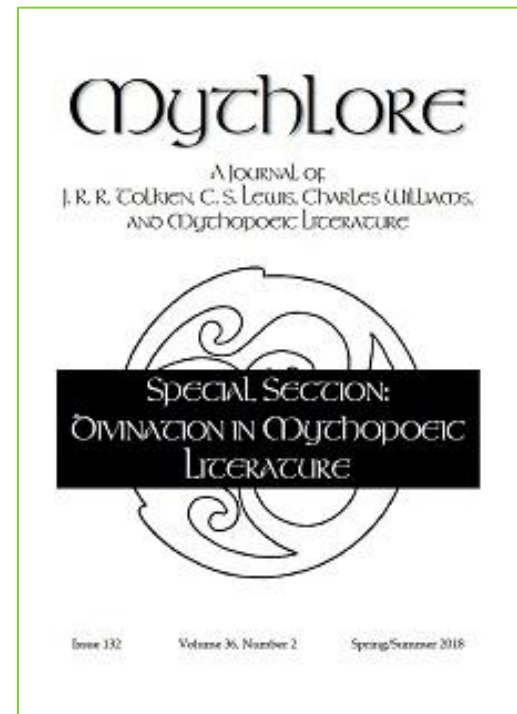


Mythopoeic Society

mythLORE

A Journal of J.R.R. Tolkien, C.S. Lewis,
Charles Williams, and Mythopoeic Literature

- The new workflow
 - Contributor's first step is to set up or access account
 - Everything related to that submission in one place: correspondence, revisions, cover letter, etc. (or at least that's the final goal)
- Automated communication
 - Acknowledges receipt
 - Reminds me of next steps
 - Reminds referees to report
- Advantages of canned messages
 - Sometimes the impersonality of a canned message is a good thing; it comes from "The Editor," not me



ADVANTAGES FOR THE EDITOR

- At-a-glance status of submissions, what work I need to be doing
- Ease of assigning work to referees and guest editors
- Ease of transition to a new editor if that becomes necessary; nearly everything needed will be in one place
- Acceptance rates and other useful statistics
- Easy to refer authors to previous work in their topic



ISSUES STILL TO ADDRESS

- Automatic mail fails: too much, too repetitive, could be easier to edit
- Users who are not tech-savvy are easily frustrated
- Some documents are still going through my email
 - Need to automate author agreements
 - Need to automate sharing proofs with authors
- Want to convince our board to drop the embargo
- Also still producing print version for the foreseeable future, which means it has to be laid out for print.



TOOLS FROM BEPRESS I NEED TO ADOPT

- Tutorials I can customize for my users that walk them through the submission process and how to submit revisions (with screenshots).
- Change setting so I can access the email addresses of my referees and authors again; I often need to contact them outside of the system, etc.
- A flowchart of events from submission to publication, so I can see what emails are triggered when, and decide what to edit.



- *What I really need is TIME to do all this!!*

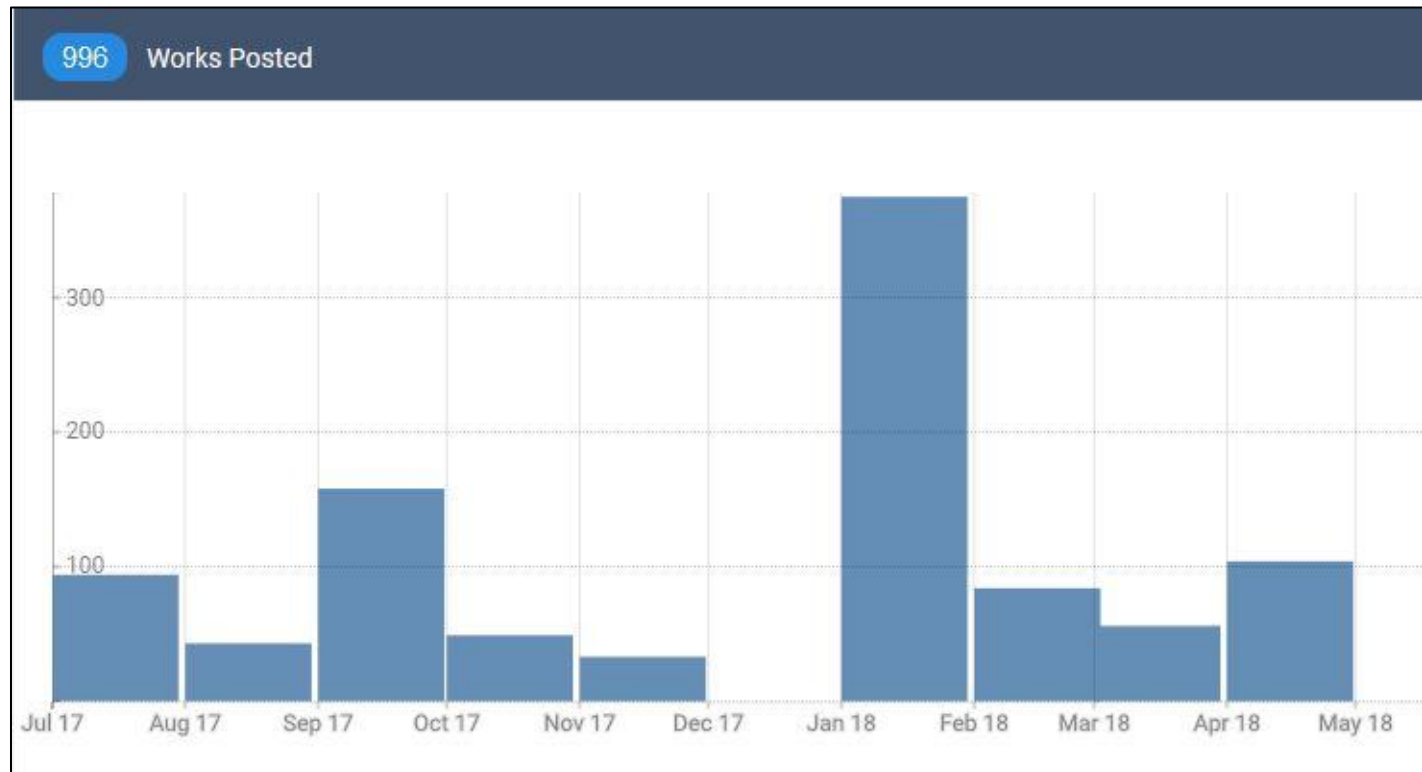




... and now back to Phillip

In the last year

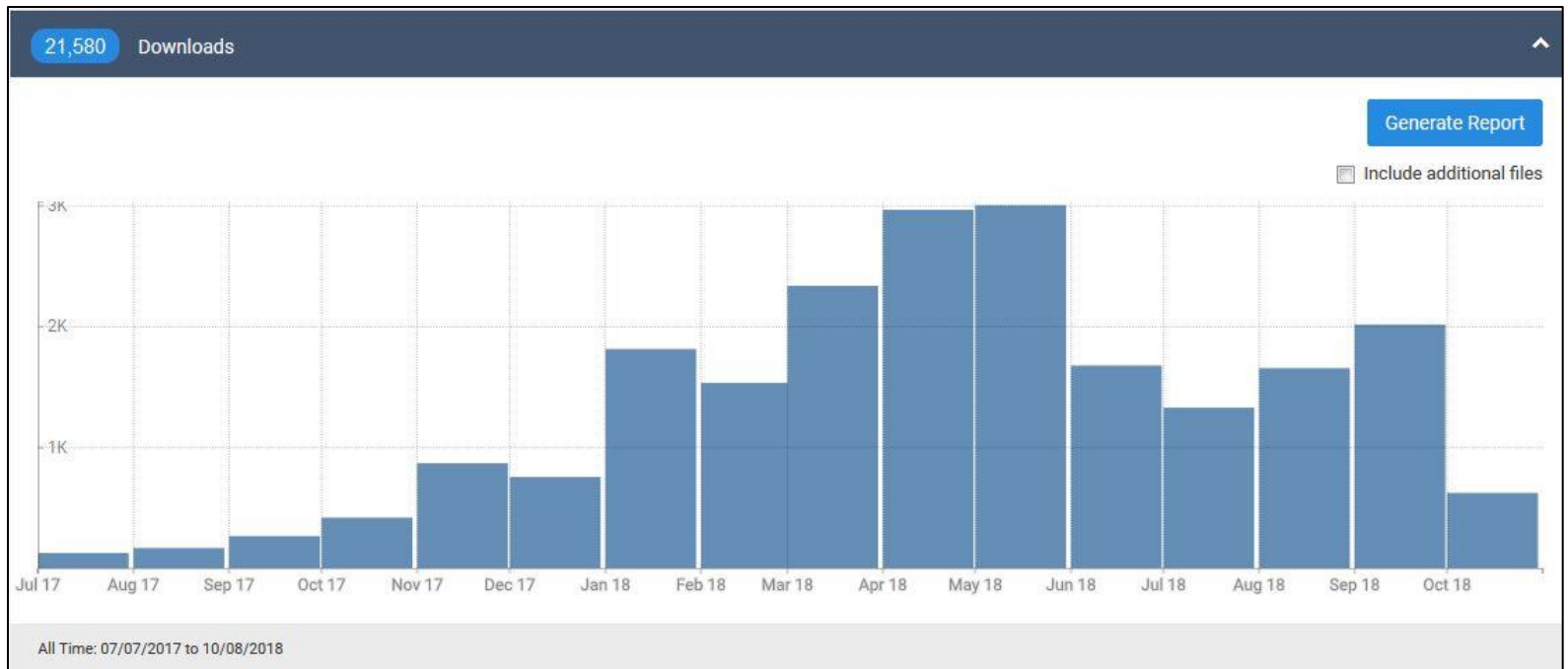
Mythlore works posted



Almost 1,000 works from *Mythlore* have been posted in the SWOSU Digital Commons from July 2017-May 2018. Built-in features make it easy for authors and editors to track readership and downloads.

Accessible from anywhere

Mythlore downloads



Mythlore readership steadily climbed during last school year and is continuing to show increasing numbers this academic year.

Accessible from anywhere

Locations of *Mythlore*'s 21,580 downloads



Mythlore is being read on six continents and in dozens of countries by serious scholars and casual fans alike.

Top Tens

Mythlore's most downloaded articles

996 Works	
Show 10 entries	Search: <input type="text"/> Export
Title	Downloads
The Christian Parody in Sara Paretsky's <i>Ghost Country</i>	413
Asian's Sacrifice and the Doctrine of Atonement in <i>The Lion, the Witch and the Wardrobe</i>	386
<i>Letters to Malcolm</i> and the Trouble with Narnia: C.S. Lewis, J.R.R. Tolkien, and Their 1949 Crisis	350
Wizards and Wainscots: Generic Structures and Genre Themes in the Harry Potter Series	332
Hobbit Sex and Sensuality in <i>The Lord of the Rings</i>	306
Dragons and Serpents in J.K. Rowling's <i>Harry Potter</i> Series: Are They Evil?	303
"Dwarves are Not Heroes": Antisemitism and the Dwarves in J.R.R. Tolkien's Writing	275
Toying with Fantasy: The Postmodern Playground of Terry Pratchett's Discworld Novels	273
Cults of Lovecraft: The Impact of H.P. Lovecraft's Fiction on Contemporary Occult Practices	273
"Because I'm a Girl, I Suppose!": Gender Lines and Narrative Perspective in <i>Harry Potter</i>	272
Showing 1 to 10 of 996 entries	
All Time: 07/07/2017 to 10/08/2018	
Previous Next	

Mythlore readership interests are simple to identify and quantify.

Top Tens

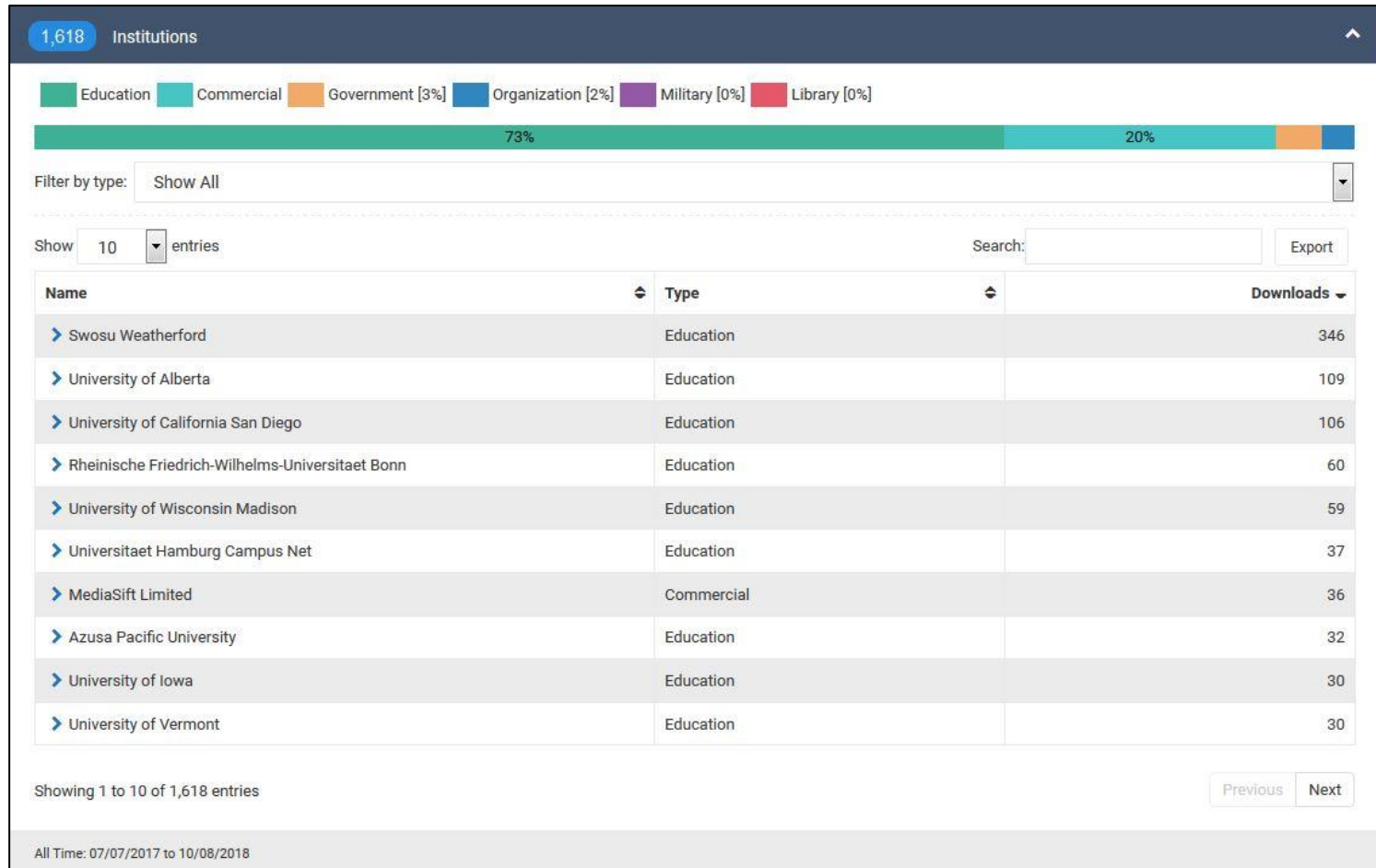
Download country locations

134 Countries		
Show	10	entries
Search:		Export
Regions		Downloads
> United States		9505
> United Kingdom		2372
> Canada		1329
> Germany		1045
> France		916
> Netherlands		554
> Australia		393
> Brazil		379
> Russian Federation		299
> Spain		293
Showing 1 to 10 of 134 entries		Previous Next

The US boasts the highest readership of *Mythlore*, but the UK, Germany, and Canada also show strong interest.

Top Tens

Institutions accessing *Mythlore*



Universities dominate the type of institutions that access *Mythlore*.

An unqualified success



Mythopoeic Society

mythLORE

A Journal of J.R.R. Tolkien, C.S. Lewis,
Charles Williams, and Mythopoeic Literature

- For Mythopoeic Society:
 - *Mythlore* is being downloaded thousands of times per year.
 - *Mythlore* authors have greater visibility for their scholarship.
 - The Mythopoeic Society is visible on the Digital Commons platform.
 - *Mythlore* is only the first project. Other Mythopoeic Society publications will be posted to Digital Commons in the future.

One of many

Location of *Westview*'s downloads



Other publications on the SWOSU Digital Commons are also expanding their audiences. For example, *Westview* <https://dc.swosu.edu/westview/>, a literature journal for western Oklahoma, is being read around the globe. This journal has been available as full issue PDFs. We are currently uploading new PDFs with a link to each item in the full run of the journal.

Supporting faculty and student works



<https://dc.swosu.edu/aij/>



<https://dc.swosu.edu/jur/>



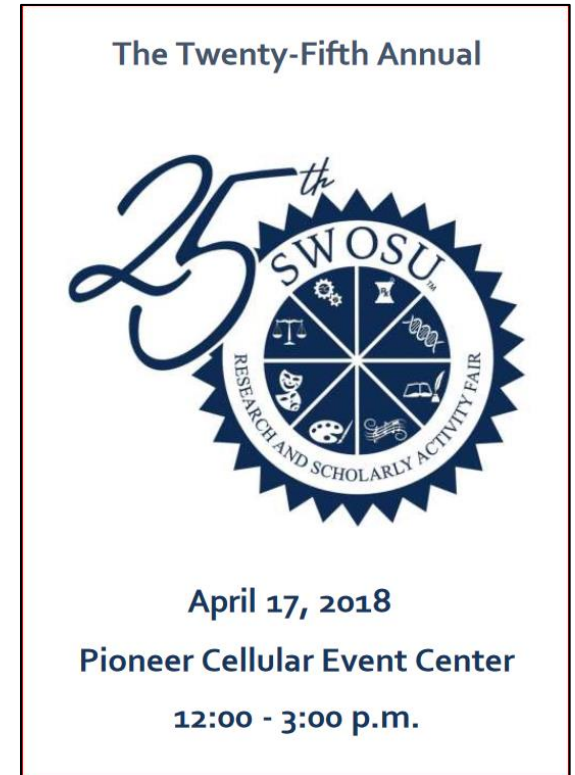
<https://dc.swosu.edu/mayfly/>



https://dc.swosu.edu/the_southwestern/

ESL Club & Women Speak

<https://dc.swosu.edu/esl/4/>



https://dc.swosu.edu/rf_programs/

Monthly readership report



From: SWOSU Digital Commons

Dear Author,

You had **22** new downloads in July 2018 across your **14** papers in SWOSU Digital Commons. Your current readership:

335 Total Downloads



**VISIT MY
DASHBOARD**

An unqualified success



- For SWOSU:
 - Contributes to role as a center for arts, culture, science, and technology.
 - Serves the university faculty and students by helping create a diverse intellectual environment
 - Promotes SWOSU on an international level.
 - Advances technologies that maximizes learning.
- For more about student-led Research and Student-Centric Publishing at SWOSU see our bepress webinar at: <https://vimeo.com/292006330>



Questions?

For more information:

Phillip Fitzsimmons
Reference and Digitization Librarian
Southwestern Oklahoma State University
phillip.fitzsimmons@swosu.edu

Janet Brennan Croft
SCI Liaison and Librarian for
Copyright and Disability Services
Rutgers University
mythlore@mythsoc.org