

Fort Hays State University

FHSU Scholars Repository

Reveille Yearbooks

Student Experience Collections

1933

Reveille - 1933

Fort Hays State University

Follow this and additional works at: <https://scholars.fhsu.edu/yearbooks>

Content Disclaimer

The primary source materials contained in the Fort Hays State University Special Collections and Archives have been placed there for research purposes, preservation of the historical record, and as reflections of a past belonging to all members of society. Because this material reflects the expressions of an ongoing culture, some items in the collections may be sensitive in nature and may not represent the attitudes, beliefs, or ideas of their creators, persons named in the collections, or the position of Fort Hays State University.

Recommended Citation

Fort Hays State University, "Reveille - 1933" (1933). *Reveille Yearbooks*. 19.
<https://scholars.fhsu.edu/yearbooks/19>

This Book is brought to you for free and open access by the Student Experience Collections at FHSU Scholars Repository. It has been accepted for inclusion in Reveille Yearbooks by an authorized administrator of FHSU Scholars Repository. For more information, please contact ScholarsRepository@fhsu.edu.

REVEILLE



1 9 3 3



THE • 1933
REVEILLE
P

COPYRIGHT

SHIRLEY BAIRD

Editor

NORMAN LIETZKE

Business Manager

•

Engraved by
MID-CONTINENT ENGRAVING COMPANY
Wichita, Kansas

Printed by
THE BOTZ PRINTING COMPANY
Jefferson City, Missouri

Photographs by
EKEY STUDIO
Hays, Kansas

P R E S E N T I N G
I M P R E S S I O N S O F
T H E Y E A R 1 9 3 3
A T F O R T H A Y S
K A N S A S S T A T E
C O L L E G E

H A Y S

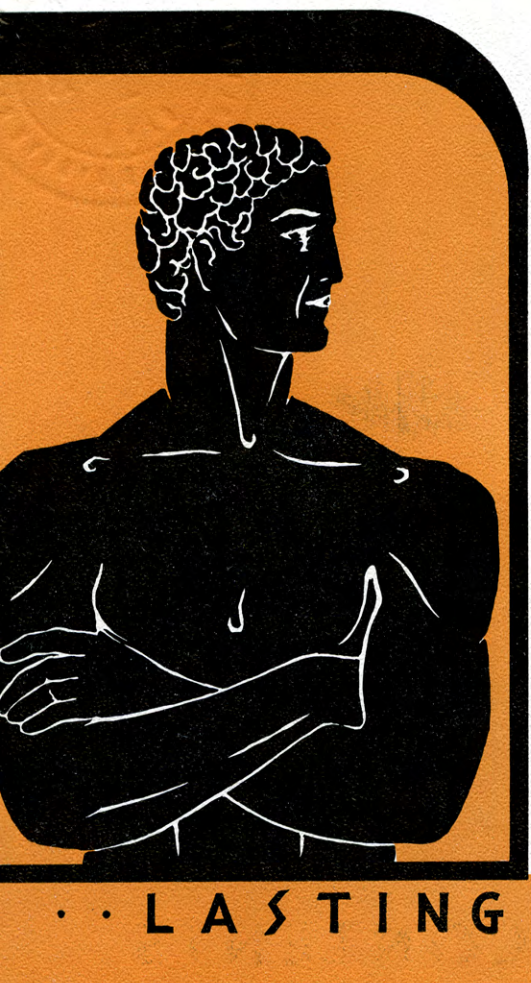
K A N S A S

T H E

1 9 3 3

 R E V E I L L E





Imp

WE MAY regret bidding farewell to college days, when realization comes that for the last time we have walked, as a student, upon the college campus. But we are not leaving everything --we carry with us the impressions of a great work, of high ideals and aspirations--of education. Those are the impressions that remain with us when college life itself is but a series of dim and fleeting memories--those are the impressions which enable us to take our place and part in the world's daily work.



ressions

The effervescent pleasures which once seemed so important fade before the grim reality of life--our lasting impressions carry us on. » » » » » »



CONTENTS

Administration Impressions
Classes Impressions
Physical Impressions
Fine Art Impressions
Departmental Impressions
Greek Impressions





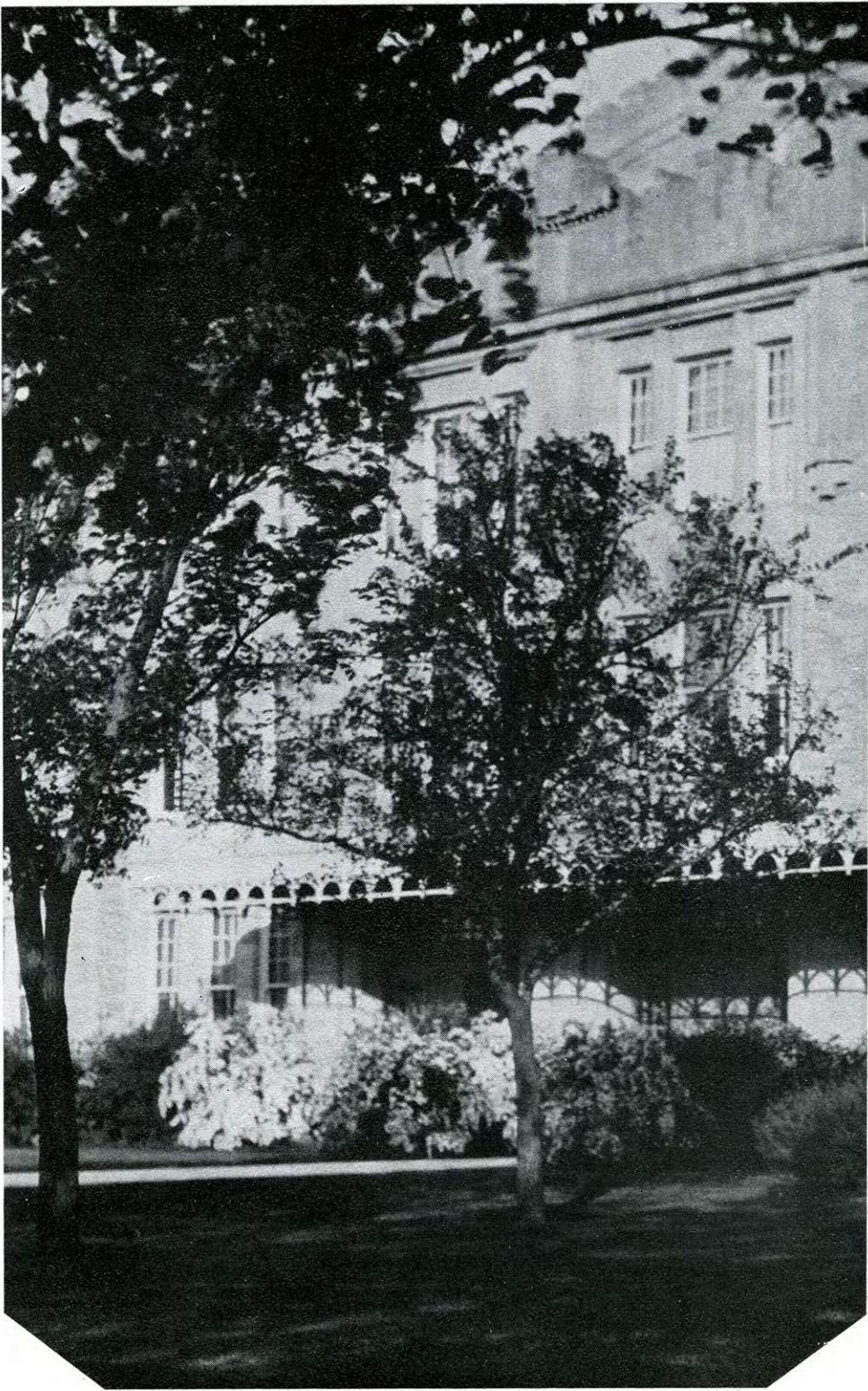
DEDICATION



*To youth—to the succeeding
generations who will take
our places and carry on.*

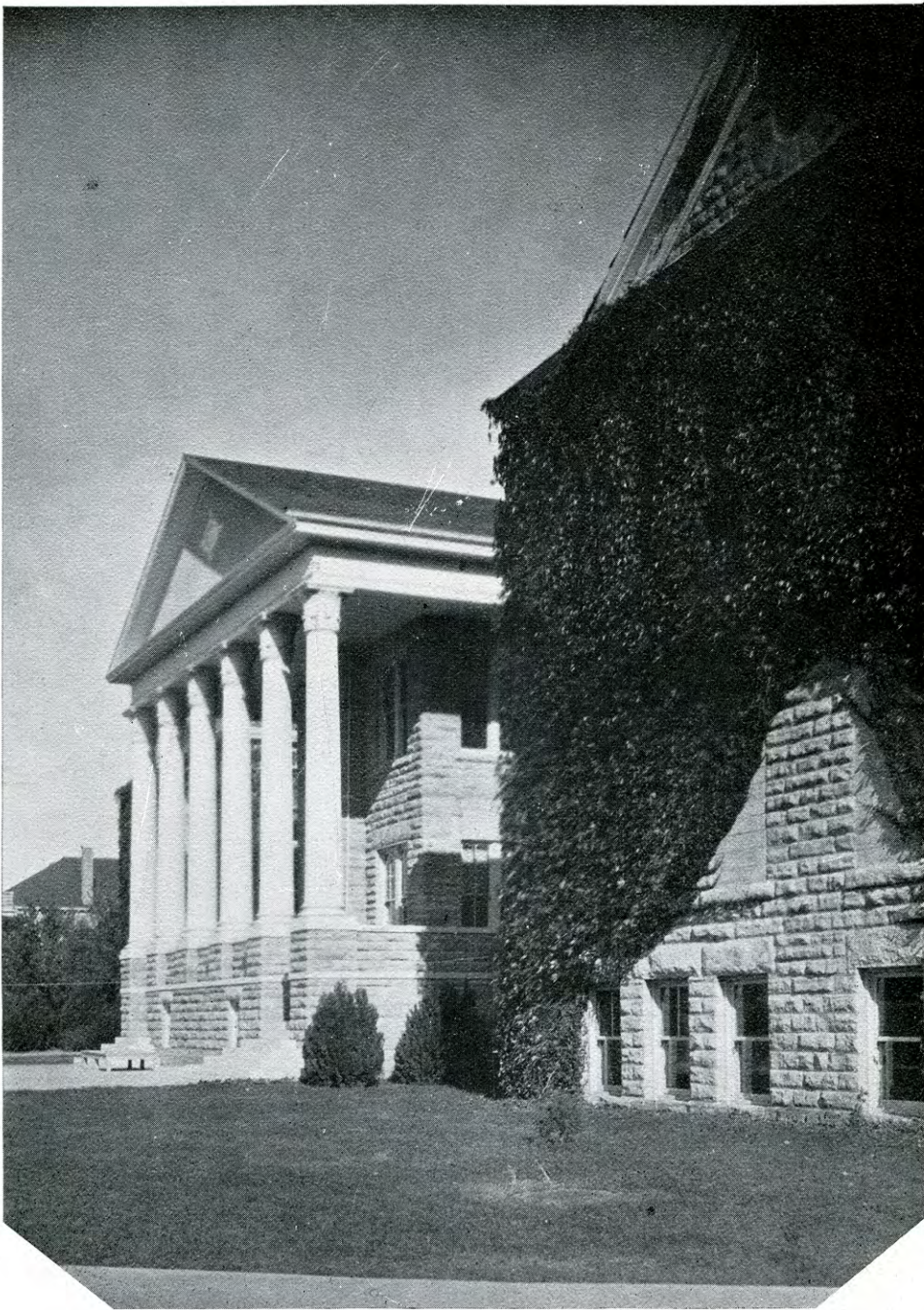


IMPRESSIONS OF THE
C A M P U S

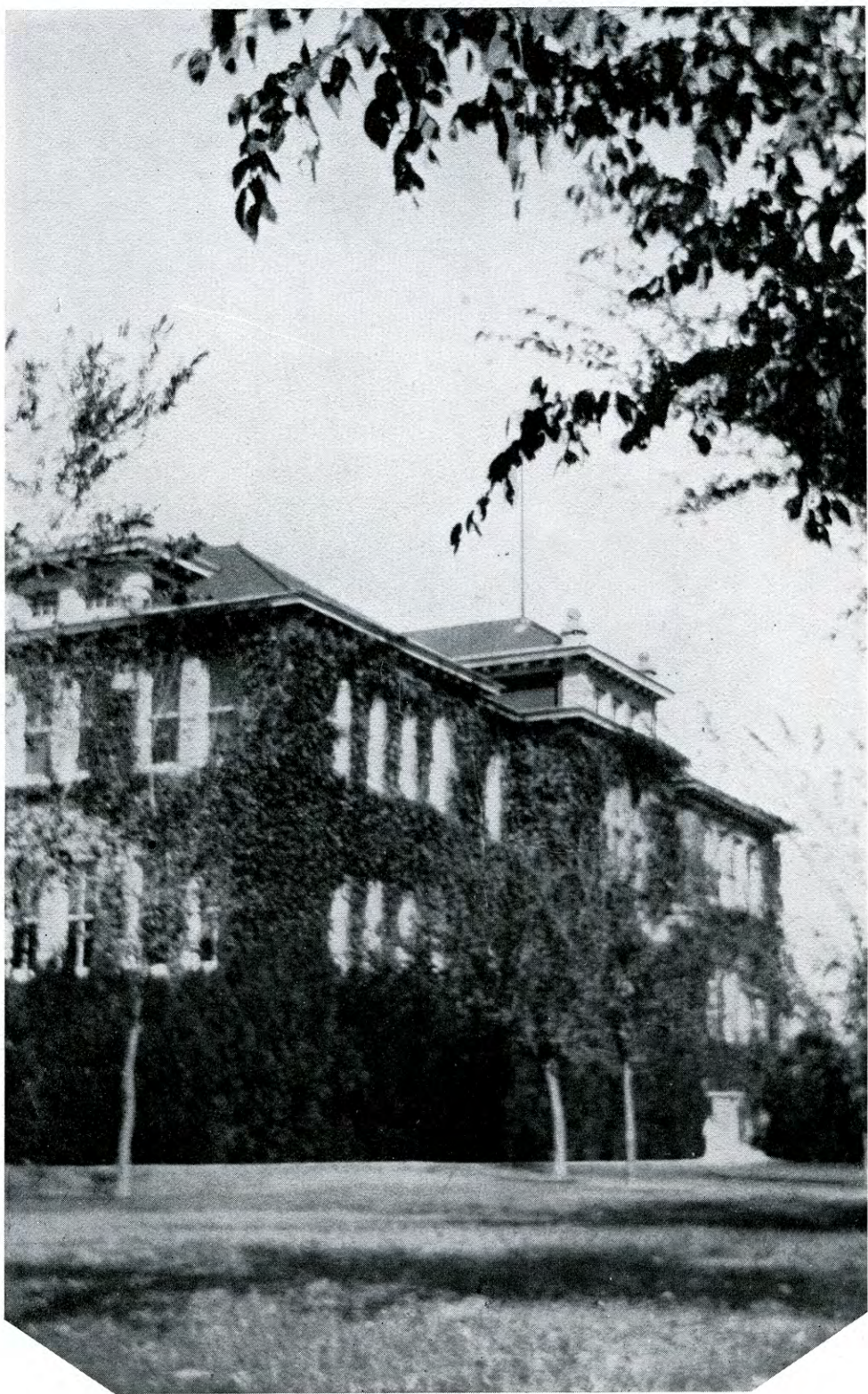


The Coliseum—from whence emanate strange wailings.

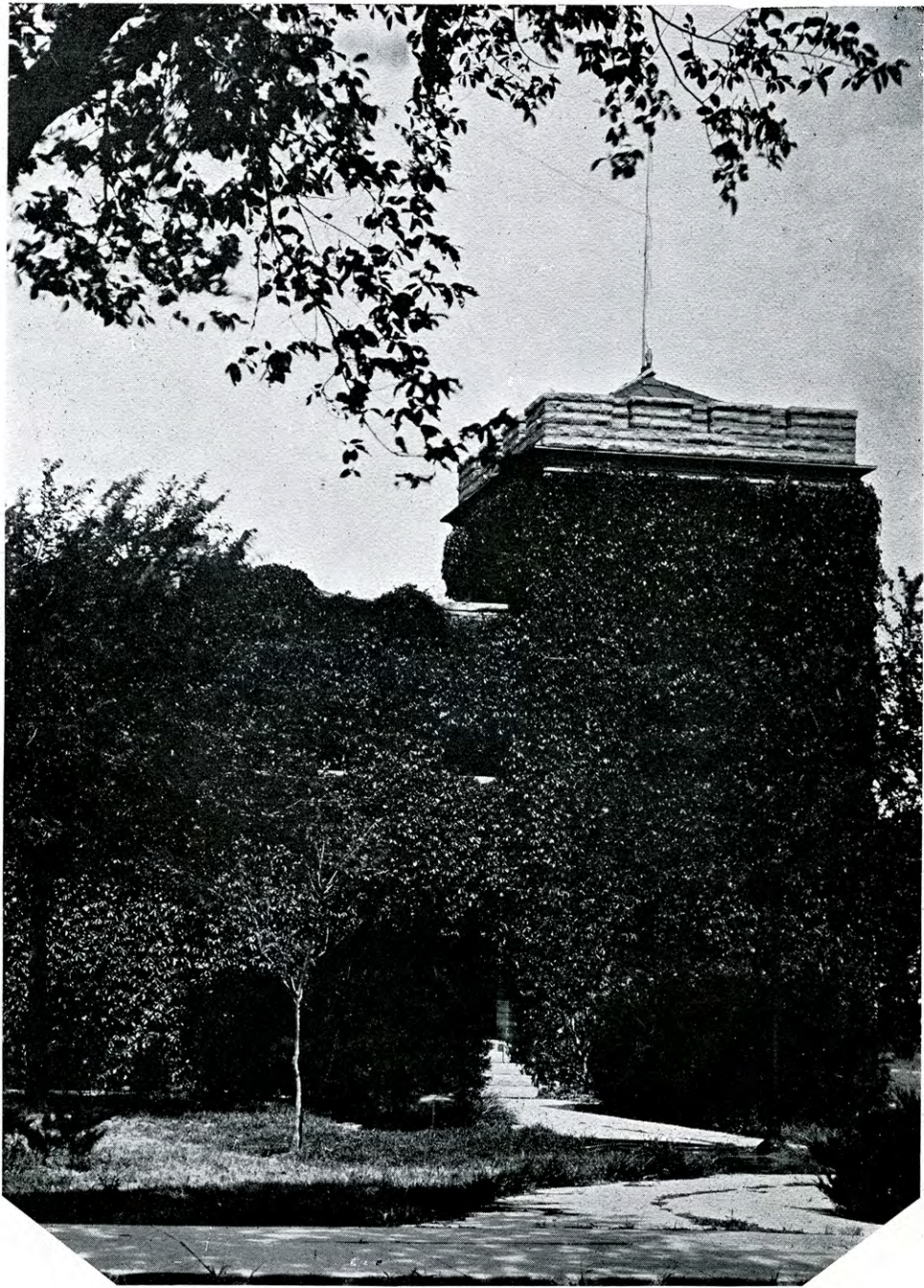




Picken Hall—where many an aspiring student teacher has met his Waterloo.



The Industrial Building—where home making is an art.



*The Woman's Building—where Greeks get together and our
Dean of Women reigns supreme.*



WILLIAM A. LEWIS, B. S., A. B., LL.D.

*President of Fort Hays Kansas
State College*





IRENE RANDALL



KATHERINE RHOADES



VENA MAE DAVIDSON



EDITH PALMER



PAULINE BERGIN



ELEANOR WINTERS

PERSONALITIES

VYRL LEVAN
Reveille King

ANN ANGELL
Reveille Queen



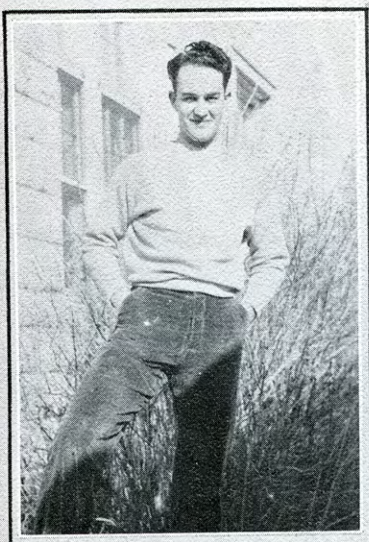


MARTHA WYLIE
Popularity

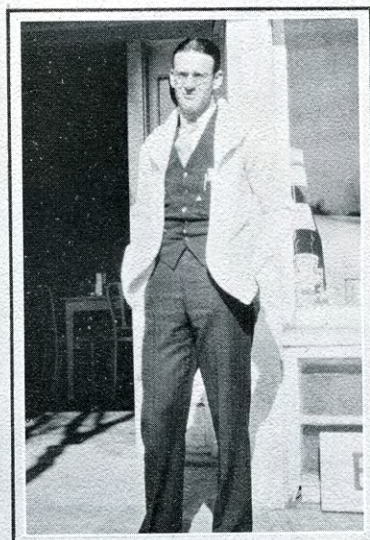


ALICE START
Beauty

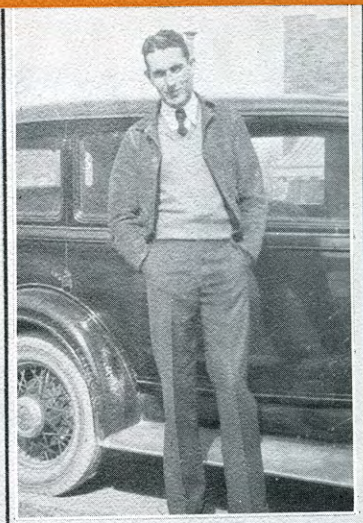
PERSONALITIES



ELTON WILLIAMS



BERT BINGAMAN



LAWRENCE RARICK



EDGAR KING



CHARLIE NORTHROP



"DEAC" HAWKES

ADMINISTRATION

I M P R E S S I O N S

AS FRESHMEN, entering timidly into our first college classes, our professors loom up before our eyes, awe-inspiring creatures capable of making our school life a reign of terror, or years of pleasure. But we find as we progress that these self-same professors are really not so terrifying when our eyes become adjusted to our surroundings. We discover that they are always ready to lend a helping hand, and we come to realize that without the kindly help and interest of these men and women, our school life would be barren and unproductive.

Our administration is especially interesting to us this year because 1933 marks the twentieth year of

W. A. Lewis' presidency of our college. Under his administration, the enrollment has greatly increased, a number of new buildings have been erected on the campus, and the school's policies have continually been strengthened.

There are others at the head of our school who have worked hard in the interests of Fort Hays Kansas State College. By their efforts they have built our college up to its present good standing.

So, when as Seniors we leave this institution, we look upon our professors—not as ogres—but as kindly friends, always willing to help us, never trying to retard our progress.



Anniversary banquet honoring President Lewis

Our Faculty

WE present here snapshots of a few of our college faculty members.

President W. A. Lewis, in his twenty years reign as administrative head of our college, has demonstrated many times his executive ability. Through the expenditure of great personal efforts he has gained for the school the position it holds today.

Dr. C. E. Rarick, director of extension service, has, by his work among the high schools of Kansas, broadened the service of the school, and has carried to the high schools of the state information of the work of the Fort Hays Kansas State College.

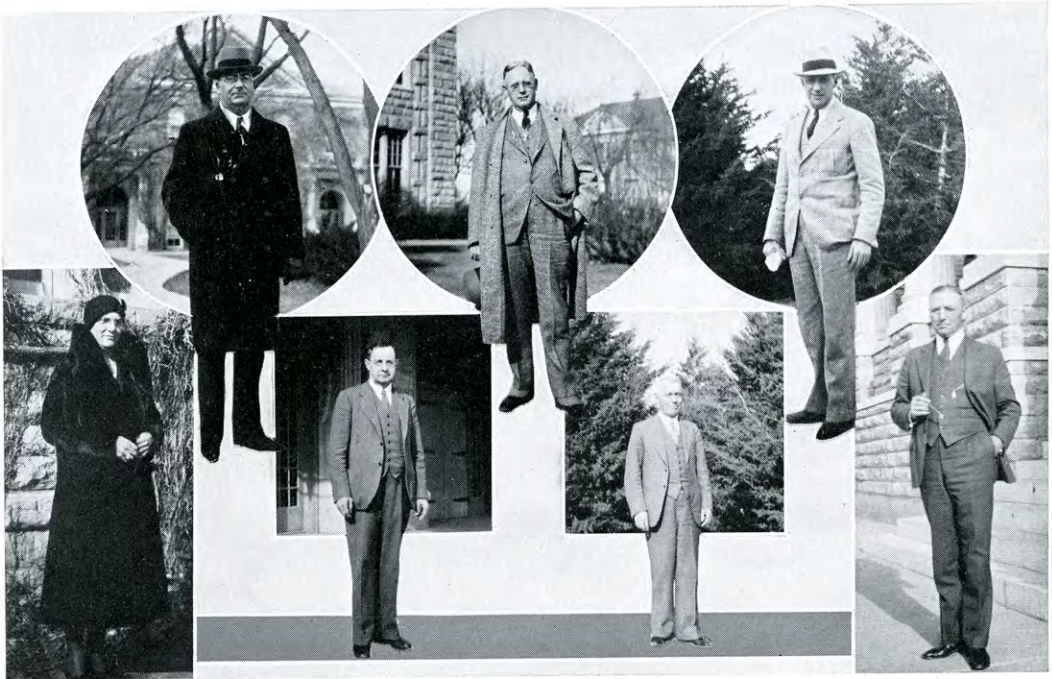
Dr. R. R. Macgregor, head of the English department, has, by his advice and supervision, greatly benefited a number of literary aspirants who have come to this campus.

F. B. Lee, registrar and dean of the faculty, is well-known to every student. His activities are many and varied. Numerous are the students who have profited by his advice.

H. E. Malloy, head of the music department, has sponsored the annual Music Festival for many years. Through his efforts famous musical talent has been brought to our campus and made available to the students here.

Miss Elizabeth J. Agnew, dean of women, performs a wonderful service in her position as advisor to the women of our college.

Dr. Robert T. McGrath, a comparatively new member of our faculty, is head of the training school. By his capability, he has greatly strengthened and helped the department.



AGNEW

LEWIS

LEE

MALLOY

RARICK

MACGREGOR

MCGRATH

Student Council

THE Student Council is composed of fifteen members. This membership is made by the election of three members from each of the four classes, and of three members at large from the student body. The *Student Council* is the executive group whose function is the governing of student problems. Class presidents are ex-officio members.

STUDENT-FACULTY ADMINISTRATIVE COMMITTEE

This group, chosen from the *Student Council*, has as its duty the reviewing of disciplinary cases presented to the *Council*. After they are reviewed, they are presented to and acted upon by the *Council*, then presented to *President W. A. Lewis* for his consideration.

THE COMMITTEE

LESLIE NASH *Chairman*
DALE HOBBS LAWRENCE RARICK
DEAN F. B. LEE *Faculty Advisor*



BARTELL	BARTHOLOMEW	CHILDS
DARLAND	DAVIDSON	DAWSON
DENNIS	FISHER	HOBBS
HOOVER	LEVAN	LIETZKE
RARICK	WAELDIN	

Faculty

DEAN FLOYD B. LEE, A. B., A. M.

Dean of the Faculty and Registrar

Kansas State Teachers College of Emporia; University of Kansas.



EARL EUGENE STRIMPLE, A. B.

Instructor in Journalism and Director of News Service

University of Kansas.

CHARLES FISHER WIEST, A. B., D. D.

Professor of Philosophy

Gettysburg College, Gettysburg, Pa.; Lutheran Theological Seminary, Gettysburg, Pa.; Midland College.

JAMES R. START, B. S., A. M.

Instructor in Speech

Fort Hays Kansas State College; Columbia University.

ERNEST R. MCCARTNEY, A. B., A. M., Ph. D.

Professor of Economics

Monmouth College, Monmouth, Ill.; University of Wisconsin; University of Nebraska.

MAUDE ISABEL GORHAM, Ph. B., A. M.

Instructor in Education

University of Chicago; Columbia University.

FRED W. ALBERTSON, B. S., A. M.

Associate Professor of Agriculture

Fort Hays Kansas State College, Kansas State College of Agriculture and Applied Science; University of Minnesota; University of Nebraska.

CHARLES H. LANDRUM, A. B., A. M.

Assistant Professor of History and Social Science, University of Kansas; Yale University

THORNTON W. WELLS, B. S., M. S.

Instructor in English

Fort Hays Kansas State College; Kansas State College of Agriculture and Applied Science.





Faculty

ELIZABETH JANE AGNEW, B. S.

Dean of Women

Kansas State College of Agriculture and Applied Science; Columbia University.

MANETTA HEIDMAN, B. S., M. S.
Instructor in Textile and Clothing
Iowa State College; Des Moines College.

MARGARET H. HAGGART, B. S., M. A.
Professor of Home Economics
Kansas State College of Agriculture and Applied Science; University of Chicago; Columbia University.

CHARLES H. BROOKS, B. S., M. S.
Instructor in Correspondence Study Department and Latin
Fort Hays Kansas State College; Kansas State Teachers College of Emporia; Kansas State College of Agriculture and Applied Science; University of Kansas.

MODESTO JACOBINI, A. B.
Professor of Foreign Languages
Liceo, Taranto, Italy; American International College; Yale University; New York University; University of Chicago.

HOMER B. REED, A. B., A. M., Ph. D.
Professor of Psychology
Indiana University; University of Chicago; Columbia University.

HARVEY A. ZINSZER, B. A., M. A., Ph. D.
Professor of Physics and Astronomy
Lehigh University; Indiana University.

WILLIS H. WALKER, A. B., M. A., Ph. D.
Acting Professor of Economics
Iowa University.

EDWARD E. COLYER, A. B., A. M.
Professor of Mathematics
Cooper College; University of Kansas; University of Colorado; University of Nebraska.



Faculty

HENRY EDWARD MALLOY, B. S.

Director of Music

Kansas State Teachers College of Emporia; Voice under George Hamlin, Chicago; D. O. Jones, Emporia; Ella Bochus-Behr, Berlin; Hinshaw of Metropolitan Opera, New York; George Ferguson, Berlin; P. Kirk-towns, Berlin.



EARL F. MORRIS, B. S., M. D.

*Director of Health and Physical Education;
Professor of Public Health*

Kirksville State Teachers College; St. Louis University.

EDWIN DAVIS, B. S., M. A.

Professor of Manual Arts

Kansas State College of Agriculture and Applied Science; Fort Hays Kansas State College; University of Minnesota.

WILBUR CLIFFORD RILEY, B. S.

Football Coach and Instructor in Physical Education for Men

Fort Hays Kansas State College; Michigan University.

LEONARD W. THOMPSON, B. S., M. A.

Instructor in Business Administration

University of Kansas; Kansas State Teachers College, Emporia.

PAUL B. GROSS, B. S.

Basket Ball Coach and Instructor in Physical Education for Men

Fort Hays Kansas State College; University of Illinois.

ARTHUR WILLIS BARTON, A. B., Ph. C., Ph. D.

Professor of Botany

University of Washington; Northwestern University.

JAMES YEAGER, B. S.

Instructor in Physical Education and Assistant Coach

Kansas State College of Agriculture and Applied Science; University of Iowa.

LYMAN DWIGHT WOOSTER, A. B., Ph. M.

Professor of Zoology

Kansas State Teachers College of Emporia.



Faculty

CLARENCE E. RARICK, A. B., Ed. D.
*Professor of Rural Education and Director of
Extension Service*

Kansas Wesleyan University; University of Colo-
rado; University of Kansas.

HOBART S. DAVIS, B. A.
Instructor in Voice, Men's Glee Club
University of Nebraska; Northwestern Uni-
versity.

FLOYD B. STREETER, A. B., A. M., L. L.
Librarian
University of Kansas; University of Michigan.

FREDERICK E. GREEN, A. B.
Instructor in Band and Harmony
Indiana University; Louisville Conservatory;
Detroit Institute of Musical Art; University of
Michigan.

MARY BARRETT, A. B., B. S. in L. S.
Reference Librarian
Washburn College; University of Illinois.

LUCILLE FELTON, B. S.
Instructor in Piano
Fort Hays Kansas State College; Alexander
Raab; Caruthers Normal School of Piano, Chicago.

MARY ELIZABETH WILLIAMS, A. B., A. B. in L. S.
Supervisor in Circulation
University of Wichita; University of Michi-
gan.

PAUL BLAIR BECKHELM, B. M.
Instructor in Piano and Music Theory
American Conservatory of Music; Northwestern
University.

MARGARET HELEN DRESHER, A. B., B. S. in L. S.
Cataloger
McPherson College; University of Illinois
Library School.



Faculty

ROB ROY IAN MACGREGOR, A. B., A. M., Ph. D.

Professor of English

Otago University of New Zealand; University of Jena; Cambridge University.



ROY RANKIN, A. B., A. M.

Professor of Chemistry

Kansas State Teachers College of Emporia; University of Kansas; Harvard University.

WALTER G. WARNOCK, A. B., A. M., Ph. D.

Assistant Professor of Mathematics

Harvard University; University of Illinois.

GENEVA TRACY MILLETT, B. S. in P. E., M. A.

Instructor in Physical Education for Women

University of Tennessee; University of Iowa.

ELSIE HARRIS, A. B., B. F. A.

Professor of Applied Arts

University of Oklahoma; Snow-Frowhlich School of Industrial Art, Chicago; Boulder U.; Columbia U.; Broadmoor Art Academy, Colorado Springs. (On leave of absence).

JESSIE F. PEARCE, R. N., A. B.

College Nurse

Washington University; University of Missouri.

ELIZABETH BARBOUR, A. B., A. M.

Instructor in Physical Education for Women

University of Chicago.

GEORGE F. STERNBERG

Curator, Museum of Geology and Paleontology.

GEORGE A. KELLEY, A. B., M. A., B. Ed., Ph. D.

Assistant Professor of Psychology

Friends University; Park College; University of Kansas; University of Minnesota; University of Edinburgh, Scotland; University of Iowa.





Faculty

ROBERT T. MCGRATH, Ph. M., Ph. D.

Professor and Director of Education

State Teachers College, DeKalb, Illinois; University of Wisconsin.

PEARL G. CRUISE, A. B., A. M.

Assistant Professor of Education

University of Iowa; Iowa State Teachers College.

FLORENCE M. WALLACE, B. S.

Instructor of Public School Music and Supervisor

Fort Hays Kansas State College; College of Emporia; University of Southern California.

ROSELLA MAUDE MCCARROLL, B. S., A. M.

Supervisor of Training in Intermediate Grades

Fort Hays Kansas State College; Columbia University.

MARY MAE PAUL, B. S., M. A.

Junior High School Teaching Supervisor

Fort Hays Kansas State College; Columbia University.

EMMA GOLDEN, B. S., M. A.

Kindergarten Teaching Supervisor

State Teachers College, Ellindale, S. D.; University of Minnesota.

RUTH BEAGLEY, A. B.

Supervisor of Training in Primary Grades

Iowa State Teachers College; University of Iowa.

WILLIAM D. MORELAND, A. B., M. A., Ph. D.

Assistant Professor of Political Science

State University of Iowa.

ELAM BARTHOLOMEW, M. S., Sc. D.

Curator of the Mycological Museum

Kansas State College, Manhattan; Editor Fungi Coluiani and North American Uredinales.



C L A S S E S

I M P R E S S I O N S

THE senior class of '33 is soon to bid good-bye to the campus. They will leave behind many impressions of tasks accomplished, of good work and fine records. And with them they will take, as they depart, many memories of their school days—memories to treasure in future years when those school days become a dim and distant unreality.

The seniors hand to their successors, the juniors, the prestige that accompanies the rank of senior. They wish them good luck and offer them good will. And the juniors anticipate the time when they shall

be members of the most “dignified” group on the campus—the senior class.

To the sophomores, the juniors entrust the responsibility of carrying on the record of our school as revealed in the yearbook. It is a great responsibility, but a very worthwhile task.

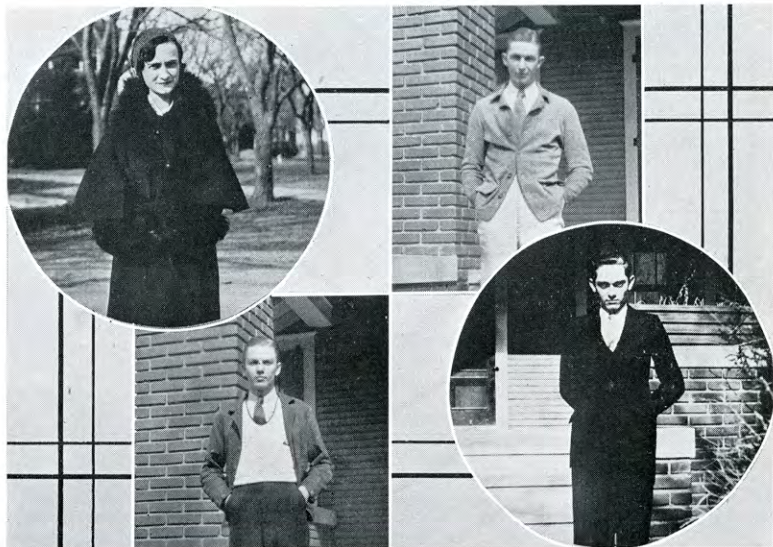
And to the freshmen, by now experienced in the ways of campus life, the sophomores bequeath the right and privilege of making life a miserable burden for the next herd of newcomers to the campus. Be it theirs to handle wisely and well!

KATHERINE RHOADES
Senior president

NORMAN LIETZKE
Junior president

VESTER DAVIDSON
Sophomore president

DONALD HOOVER
Freshman president





*Field Zoology Laboratory
Botany Laboratory
Nutrition Laboratory
Costume Designing Class*

THIS is a picture of a field zoology class on laboratory day. The general purpose of field zoology is to study how animals live. The subject around which the study centers is the word "adaptation." The creatures that can adapt themselves to their environment are the ones that survive. In this class, the habits, food, and home-building habits of various groups of animals are studied, as well as their relation to man and his welfare.

This picture is of a botany class laboratory. Botany has a twofold purpose: First, to acquaint the students with plants in general and study the two classes, flowering and non-flowering plants; second, to study plant behavior, structure, and function. In the spring and summer a study is made of the common wild flowers, commonly called weeds, analyzing, classifying, pressing, and making collections of them.

The third picture was taken during the feeding of the white rats used in nutrition class experiments. The nutrition class studies the function of food from the standpoint of its composition, digestion and its use in the body to meet the requirements of normal human nutrition. Experiments are performed upon white rats to show the effects of different diets upon them.

The costume designing class is here shown at work. This class makes a study of the fundamental principles of design and color theory as applied to dress, line, texture, and color suitable to different types. They make this study from the standpoint of adaptation of dress to the individual. The study of harmonious accessories is included.



Telescope in the Observatory



Chemistry Laboratory

THE College has reason to be justly proud of the telescope, shown above, which is installed in the Science building. The telescope is a ten-inch refractor made by E. Lohmann, of Greenville, Ohio. It weighs approximately 3,000 pounds. The accessories consist of a three-inch finder, a miniature switchboard attached to the eye-end of the instrument, three orthoscopic eye-pieces; two Huyghens eye-pieces, a zenith adapter, and an observation ladder. The maximum magnification possible is approximately 750 diameters. The material for motorizing the dome has arrived and will be installed shortly.

There are two courses offered in astronomy, one a descriptive course open to all students; the other a practical course open to those who have had descriptive astronomy, physics, and analytical geometry. The former course is a brief survey of the field of astronomy covering the moon, earth, planetary system, and stars, with some practice in observation. The latter course is designed particularly for mathematics and engineering students.

The above picture shows one of the chemistry laboratories of the College. In laboratories such as these, students prepare themselves to be commercial chemists, or teachers of chemistry, or prepare themselves for the study of home economics, botany, physiology, bacteriology, pharmacy, medicine, or engineering. The beginning courses in chemistry include a careful study of the fundamental principles of the science and an investigation of sources, methods of preparation, and uses of the more important elements and compounds.

It includes methods of taking and reducing observations to determine time, latitude, longitude, right ascension, and declination. In the observatory work, the students make their own observations and computations.

Since the opening of these courses, four eight-inch and five six-inch reflectors have been ground and mounted for observational purposes by students in this institution.



RALPH ARNOLD
A. B., Philosophy

Hays

MABEL KENYON BINGHAM
B. S., English

Hays

RACHEL M. BALES
B. S., Literature
Kansas State College, Manhattan, Y. W. C. A.
(2, 3, 4), English Club (3), Social Science Club (4).

Densmore

MAX BLAKELY
B. S., Business Administration
Kappa Beta Tau, Band (1,2,3,4), Y. M. C. A.
(4), Commercial Club (3), Parliamentary Law (3).

Hays

ALICE BARTELL
B. S., Spanish
Delta Sigma Epsilon, Kappa Omicron Phi, President (4), Panhellenic (4), Student Council (4), Home Economics Club (1, 2, 3, 4), Junior Play.

Ellis

RITA ASHCRAFT BLAKELY
B. S., Home Economics
Kappa Omicron Phi, Band (2), Home Economics Club (4), Y. W. C. A. (1).

Hays

CAROLINE L. BEESON
B. S., Commerce
Y. W. C. A., Commercial Club.

Osborne

LEO BROWN
B. S., Zoology
"K" Club (2,3), Science Club (1,2,3,4).

Hunter

PAULINE BERGIN
B. S., Commerce
Theta Sigma Upsilon, Panhellenic (3, 4), Secretary-Treasurer Student Assembly (4), Reveille Staff (2), Pep Club (2,3,4), President (4), W. A. A. (1,2,3,4).

Bogue

HENRY S. BUCK
B. S., Accounting
Sigma Tau Gamma, Student Council (2,3), President (3), Reveille Staff (2,3), Business Manager (3), Leader (2,4), Business Manager (4), Chairman Leader Board of Control (3), Pep Club (4).

Belleville

L. R. BINGHAM
B. S., English
Colorado State Teachers College (1,2,3).

Hays

HELEN M. BUTLER
B. S., Public School Music
Sigma Alpha Iota, Sigma Sigma Sigma, President (4), Panhellenic (4), Glee Club (3,4) President (4), Chorus (2,3,4), Orchestra (3,4), W. A. A. (2,3), Pep Club (3,4).

Winona

● ● SENIORS

ROBERT CASNER *Leoti*
B. S., History
 Sterling College, "K" Club, Football (3,4), Basketball (3,4), Track and Field (3,4).

VERLE CUDNEY *Leoti*
B. S. in Education, Music
 Southwestern (1,2,3), Glee Club (4), Chorus (4), Band (4).

RAYMOND DARLAND *Codell*
B. S., Biology
 Phi Mu Alpha, Senior Class President, Student Council (3,4), Leader Board of Control (4), Band (1), Chorus (2), Glee Club (2), Science Club, President (4), Junior Play.

VENA MAE DAVIDSON *Hays*
B. S., Home Economics
 Delta Sigma Epsilon, President (4), Panhellenic (4), Home Economics Club (1,2,3,4), Beauty Queen (1).

ARVA DAVIS *Mason City, Neb.*
B. S., Home Economics
 Kearney Teachers College, Kearney, Nebraska, English Club (2), Home Economics Club (2,3,4).

EFFIE DENISON *Hoxie*
A. B., English
 Kansas University, Alpha Sigma Alpha, Y. W. C. A., Glee Club (2), Chorus (2).

KATHLYN L. DENNIS *Woodston*
B. S., Primary Education
 Theta Sigma Upsilon, Student Council (4), Glee Club (1,2,3,4), Varsity Quartette (4), Lyric Quartette (3), Junior Play.

ANNABELLE JEANETTE DICKINSON *Gorham*
B. S. in Education, Home Economics
 Kappa Omicron Phi, Chorus (1,2,3,4), Glee Club (3), Home Economics Club, President (4). "Aida", "Lucia", "The Chocolate Soldier."

ELIZABETH EARLY *Hays*
B. S., Art
 Glee Club (1,2,3,4), Chorus (1,2,3,4), Art Lover's Club (2,3,4), Y. W. C. A. (1,2,3).

JOSEPH FISHER *Larned*
A. B., History
 Y. M. C. A. (2,3,4), Glee Club (3,4), Chorus (2,3,4), Social Science Club (1,2,3), President (3).

BERYL GARDNER *Great Bend*
B. S., Kindergarten Education
 Sigma Alpha Iota, Orchestra (3,4), Glee Club (4), String Quartette (4).

LOUIE F. GARLOW *Ames*
B. S., Commerce
 Pi Omega Pi, Debate (1), Social Science Club (2), Commercial Club, President (3).

SENIORS ● ●





BEE GARTON

B. S., Kindergarten Education
Band (1,2,3,4), Y. W. C. A. (1,2,3,4).

Norton

YUBA L. HUNSLEY

Larned
B. S., Physical Education and Public Speaking
Pi Kappa Sigma, Panhellenic, Duck Club,
W. A. A., Pep Club, Debate.

MRS. BERNIECE GROUT

Hays
B. S., Commerce
Delta Sigma Epsilon, Reveille Queen (3), Chorus
(1,2), Pep Club (1,2), Commercial Club (2,3,4),
Junior Play.

MILDRED KINGSLEY

Hays
B. S., Home Economics
Home Economics Club (1,2,3,4).

BETH HARKNESS

Hays
A. B., Spanish
Alpha Sigma Alpha, President (3), Panhellenic
(3), Reveille Staff (4), Chorus, English Club,
Y. W. C. A.

RUTHETTA KRAUSE

La Crosse
B. S., Business Administration
Sigma Sigma Sigma, Pi Omega Pi, Pi Gamma
Mu, Commercial Club (1,2,3).

FRED HEMPHILL

Clay Center
A. B., Journalism
Sigma Tau Gamma, President (3), Reveille Staff
(2,3), Editor (3).

ESTHER LANNING

Sterling
B. S., English
Sterling College (1,2), Y. W. C. A. (3,4), Presi-
dent (4), Chorus (3,4), Art Lover's Club (3),
President (3).

GLADYS HOUGHTON

Ransom
B. S., Business Administration
Pep Club (2,3,4), W. A. A.

VYRL W. LEVAN

Ness City
B. S., Business Administration
Phi Mu Alpha, President (3), Pi Gamma Mu,
Student Council (3,4), Glee Club (1,2,3,4), Presi-
dent (3), Chorus (1,2,3,4), Band (1,2,3,4), Orches-
tra (3,4), Y. M. C. A. (2,3,4), President (4), Junior
Play, "The Chocolate Soldier."

EDITH HUNSLEY PALMER

Larned
B. S., Physical Education and Journalism
Theta Sigma Upsilon, Student Council (3),
Reveille Staff (3), Leader (3,4), Editor (4), Press
Club (3,4), Editor "K" Book (3), W. A. A. (2,3,4),
Orchesus (4), Duck Club (2,3,4), Life Saving
(2,3,4), P. E. Major Club (2,3,4), All-Round Girl
(3), Pep Club (3,4), Yell Leader (3,4).

GALENE LOVITT

Utica
B. S., Library Science
Y. W. C. A., Art Lover's Club, Science Club.

● ● SENIORS

ROY LOVITT *Utica*
B. S., Agriculture and History
 Kappa Beta Tau, Y. M. C. A., Cabinet (4), "K"
 Club (2,3,4), Track (2,3,4).

RALPH MCGIMSEY *Ransom*
A. B., Chemistry and Physics
 Science Club (1, 2, 3).

JAMES W. MCGRATH *Hays*
B. A., Physics and Mathematics
 Central College (1), Sigma Tau Gamma, Delta Ep-
 silon, Limacon Club, Science Club (2,3).

ELLA MAJOR *Dorrance*
B. S., Business Administration
 Kansas Wesleyan University (1), Pi Omega Pi, Presi-
 dent (4), Y. W. C. A. (4), Chorus, Commercial Club (2,3).

R. J. MEULI *Hope*
B. S., Commerce
 Phi Sigma Epsilon, Basket Ball (3,4).

ALTA MILLER *Nekoma*
B. S., Primary Education
 Alpha Sigma Alpha, Chorus (2), Home Economics
 Club (4), Y. W. C. A. (4).

ETHEL MILLER *Nekoma*
B. S., Intermediate Life
 Alpha Sigma Alpha, Band, Y. W. C. A. (4).

ROBERT MOSIER *Hoxie*
B. S., Agriculture
 Phi Sigma Epsilon, Student Council (1), Leader
 Staff (2), Press Club (2), Commercial Club (3).

MARGARET NICHOLAS *Hays*
B. S., Physical Education and Spanish
 Theta Sigma Upsilon, Duck Club (1, 2, 3, 4), W. A. A.,
 President (3), All-Round Girl (2).

KATHLEEN JO NORTHUP *Wakeeney*
B. S., Public School Music
 Sigma Alpha Iota, Orchestra (1, 4).

KATHRYN OFFERLE *Offerle*
B. S., English
 Kansas State College, Manhattan, Y. W. C. A.
 (3, 4), Press Club (3, 4), Social Usages (3), Art Lover's
 Club (2).

HAROLD C. PALMER *Hays*
B. M., B. S., Music
 Phi Mu Alpha, Glee Club (1), Chorus (1), Band
 (1, 2, 3, 4), Orchestra (1, 2, 4), "K" Club (2, 3, 4), Pep
 Club (1), Senior Play.

SENIORS ● ●





FERN FIELD PHILLIPS *Hays*
B. S., English

K. S. T. C., Pittsburg, Columbia University, University of Chicago, University of Kansas, Sigma Alpha Iota.

GLADYS ARLENE PETERS *Cuba*
B. S., Biological Science

K. S. T. C. Emporia, Pi Delta Theta, English Club, Chorus, Science Club, Parliamentary Law.

LAWRENCE RARICK *Hays*
B. S., General Science

Kansas University, Sigma Tau Gamma, Student Council (2,4), Orchestra (2,3,4), Basket Ball (2,3,4), "K" Club (2,3,4), Sophomore Class President.

MARY E. REYNOLDS *Grainfield*
B. S., Music

Sigma Alpha Iota, Glee Club (2), Chours (1, 2,3,4), Y. W. C. A. (2,3), "The Chocolate Soldier."

KATHERINE RHOADES *Hays*
B. S., Journalism

Theta Sigma Upsilon, President (4), Panhellenic (3,4), Leader Editor (3), Reveille Staff (3), Leader Board of Control (4), Press Club (3,4), Student Assembly Chairman (4), Duck Club (2,3,4), W. A. A. (1), Pep Club (3,4), Y. W. C. A. (1), Editor of Directory and Handbook (2,3,4), Junior Play, Senior Play.

ELIZA EMMA ROENNE *Osborne*
B. S., Mathematics

Chorus (1,2,3), Social Science Club (3,4), President (4), Y. W. C. A. (2).

GLADYS ROENNE *Osborne*
B. S., Kindergarten

Chorus (1,2), Y. W. C. A. (3), Art Lover's Club, (3,4).

ALBERTA ROUNER *Luray*
A. B., English

Band (3,4), Leader (2), Y. W. C. A. (1,2).

JOHN SAUERWEIN *Hays*
A. B., English

Phi Sigma Epsilon, Pep Club.

MILDRED SCHLYER *Hays*
B. S., Physical Education and Spanish

Theta Sigma Upsilon, W. A. A. (1,2,3,4), President (3), Duck Club (2,3,4).

WILLIAM SCHWARTZKOPF *Alexander*
B. S., Commerce

Basket Ball (1), Science Club, Commercial Club.

HERMAN D. SEARCH *Hutchinson*
B. S., Education

Kappa Beta Tau.

ZELMA SHAW *Canton*
B. S., History

Chours (2), Y. W. C. A. (2).

MAURINE N. SHIMMICK *Jennings*
B. S., Music

Kansas Wesleyan (1), Sigma Alpha Iota, Glee Club (2,3,4), Chorus (2,3,4), Y. W. C. A. (2,3,4), "The Chocolate Soldier."

● ● SENIORS

- LEROY STANDLEY *Luray*
B. S., Social Science
 Y. M. C. A., Social Science Club (1), Parliamentary Law.
- GENEVIEVE STULL *Palco*
B. S., Literature
 Theta Sigma Upsilon, Chorus (1, 2, 3, 4), Y. W. C. A., English Club (4), Social Usages (2, 3).
- ALICE START *Hays*
A. B., Journalism
 Theta Sigma Upsilon, Student Council (2), Glee Club (1, 2, 3, 4), Chorus (1, 2, 3, 4), Leader (2, 3, 4), Press Club (3, 4), Secretary-Treasurer Student Assembly (2, 3).
- REBECCA WELLS TAYLOR *Lyons*
A. B., History and English
 Pi Gamma Mu, English Club.
- ORVAL TRACY *Hays*
B. S. in Education, Commerce
- REVEREND F. C. TRAUTERMAN *Bunker Hill*
A. B., Philosophy
 Concordia Collegiate Institute, Bronxville, New York, Concordia Theological Seminary, St. Louis, Missouri.
- FRANCIS TRITT *Waldo*
B. S., Chemistry
 Phi Sigma Epsilon.
- EDWIN VAN DOREN *Hays*
B. S., Industrial Arts
 Kappa Beta Tau, President (4), Science Club (1, 2, 3).
- JAMES A. VAUGHAN *Greenville, South Carolina*
A. B., Journalism and English
 Duke University, Sigma Tau Gamma.
- BERTA VINCENT *Elkhart*
B. S. Commerce
 Hardin College, Theta Tau Epsilon, Chorus (1), Commercial Club (3).
- FREDA WINTERS *Hays*
B. S., Art
 Washburn University, Kansas State College, Manhattan, Alpha Sigma Alpha.
- LINDA WEST *Fort Scott*
A. B., English
- JESS WOODRUFF *Minneapolis*
B. S., Manual Arts
 Phi Sigma Epsilon, "K" Club, Football (1, 2, 3, 4).



SENIORS ● ●



LETHA A. ABELL

Music

Oakley

AMMON CHILDS

Business Administration

Rexford

EFFIE ASHWORTH

Commerce

Quinter

ALTA CLINE

English

Oakley

SHIRLEY BAIRD

English

Almena

MARIE DEBEY

Primary

Cawker City

BERT BINGAMAN

Mechanical Arts

Oakley

MARY ELIZABETH ENFIELD

Romance Languages

Hays

VIRGIL L. BROWN

Biological Science

Oakley

ESTHER FISHER

Intermediate Education

Glen Elder

MARGARET BRUNGART

Education

Collyer

HELEN FRITTS

Commerce

Hays

● ● JUNIORS

NOEL I. GANOUNG Plainville
Mechanical Arts

FRED A. GEORG Alexander
Pre-Medic

HARRIET ANN HARRISON St. Francis
English

ELIZABETH HIBBS Stafford
Music

ETTA HOFFMEISTER Claflin
Commerce

FAYNE HUBBELL Jetmore
Music

MAURINE HUNSLEY Larned
Physical Education

STELLA MAY HUPFER Bunker Hill
Commerce

OPAL HUXMAN Arnold
Public School Music

VIVIAN INLOW Hill City
English

MARIETTA JACOBS Hays
English

CASEY JONES Hill City
Pre-Law

JUNIORS ● ●





ELSIE M. JONES

Music

Kanorado

RICHARD LISS

Agriculture

Lincoln

MARLYN KINGSLEY

Business Administration

Ellis

JANICE LYONS

Home Economics

Ford

HOWARD LAMOREUX

Physical Education

Oakley

WILDA CLAIRE McREYNOLDS

Music

Montezuma

PHOEBE LAVERY

Commerce

Cawker City

LUELLA MOLLENKAMP

Commerce

Arnold

MILDRED LEWIS

English

Hoisington

ESTHER NEFF

English

Wakeeney

NORMAN LIETZKE

Physical Education

Augusta

LORETTA NICHOLAS

Literature

Hays

VERNE LIPPERT

Physics

Bison

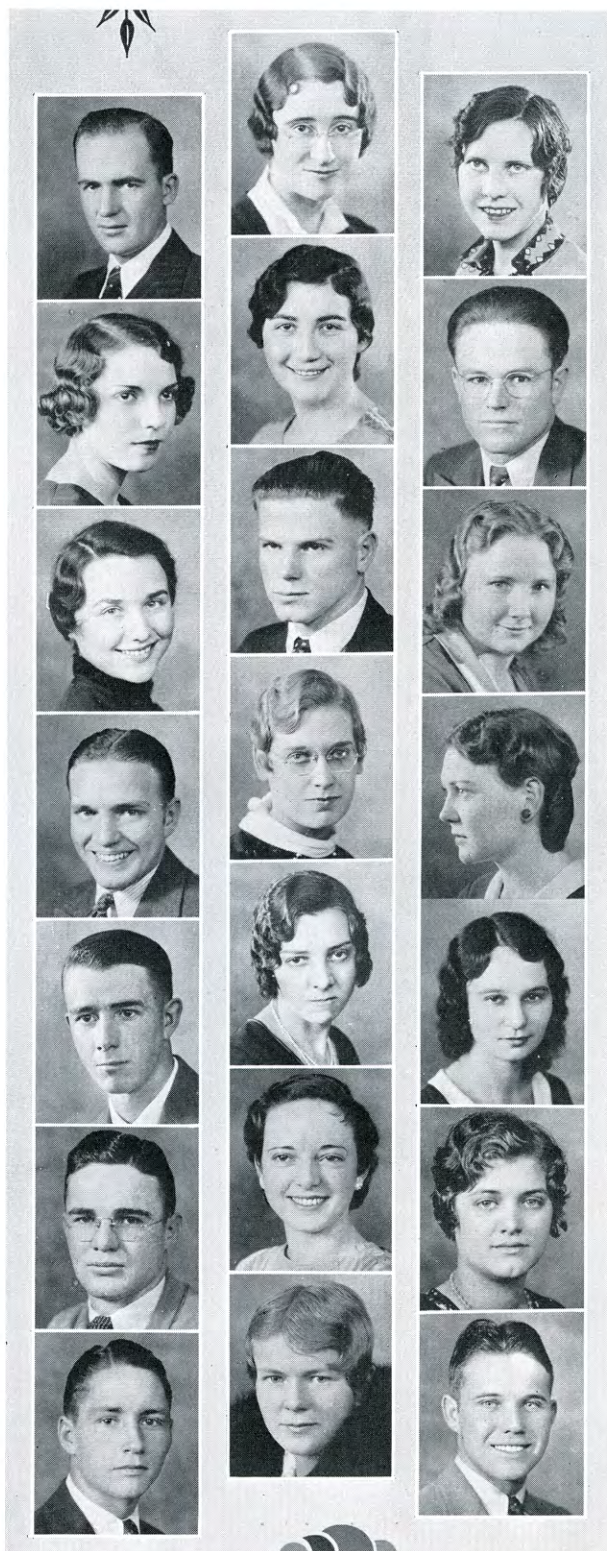
LELA PITTS

English

Mullinville

● ● JUNIORS

HARRY L. PRATT	Studley
Chemistry	
HELLEN RAWSON	Studley
Elementary Education	
EMMA LEE RAYMOND	Holyrood
Music	
WINIFRED ROE	Russell
History	
MILDRED SCHLEGEL	Otis
English	
CHARLES SHERER	Arnold
Agriculture	
NORMA STRADAL	Hays
Commerce	
PAUL WHITMER	Wilson
Chemistry	
IDA MARIE WICKIZER	Hays
Music	
CHARLES E. WILCOX, JR.	Salina
History	
ESTHER WILLIAMS	Winona
Junior High	
MARTHA WYLIE	Quinter
Physical Education	
EMMETT YEAGER	Covert
Industrial Arts	
TRESSA YEAGER	Covert
Kindergarten and Music	
HANNAH MAE ZAMRZLA	Wilson
Education	
HOWARD E. DEAN	Agra
Business Administration	
OPAL HERBERT	Ellis
VIRGINIA MAXWELL	Gove
Mathematics	
CHARLIE NORTHROP	Jetmore
Journalism	
EDITH PANTZER	Kanarado
Music	
WILBUR REX WEIGAND	La Crosse
History	



JUNIORS ● ●



ANN ANGELL *Portis*

MARCILE BROADIE *Ashland*

WALLACE F. BAKER *Plains*

DOROTHY BUNT *Clifton*

ROYER BARCLAY *Grinnell*

HAROLD BUTLER *Winona*

E. ISABELL BARKER *Beloit*

GRACIA CARROLL *Lewis*

RACHEL BARTHOLOMEW *Hays*

ANN CHRISTENSEN *Menlo*

ALBINA BASGALL *Hays*

JULIA COLAHAN *Hays*

GEORGINA BECKER *Russell*

EARL COX *Leoti*

HELEN BRADLEY *Larned*

ROY CUDNEY *Leoti*

WINIFRED BRANNAN *Rozel*

HELEN DANNEFER *Cuba*

● ● SOPHOMORES

ADRIAN DAWSON *Hoisington*
 FRED A JUNE DENMAN *Prairie View*
 ELIZABETH EPPSTEIN *Great Bend*

VERA B. FAIRBANK *Bison*
 GORDON FARR *Russell*
 MAURINE FAULKNER *Great Bend*

ALEX FRANCIS *Oberlin*
 VERA GAMBLE *Meade*
 ERMA GARTON *Norton*

NEOLA GICK *Hays*
 BERNICE GILLETTE *Oberlin*
 BLANCHE GREGORY *Alton*

JOSEPHINE GRUNDMEIER *Hays*
 ELINOR M. HERL *Hays*
 BLANCHE HOAGLAND *Jetmore*

GUY ERNEST HOKE *Hays*
 HAZEL MAY HOLTSLANDER *Osborne*
 ROBERT HOOVER *Macksville*



SOPHOMORES ● ●



REVA JEWELL	<i>Kanopolis</i>	WILLIAM MALCOLM	<i>Almena</i>
VIRGIE KALBFLEISCH	<i>Harlan</i>	DONALD MAXWELL	<i>Menlo</i>
EDGAR KING	<i>Logan</i>	WILMA MONTGOMERY	<i>St. Francis</i>
EDNA N. KRAISINGER	<i>Timken</i>	MARY NIELSEN	<i>Russel</i>
LEORA LEIDIG	<i>Lenora</i>	NORMAN NOBLE	<i>Hays</i>
GRACIE LUDER	<i>Waldo</i>	GRACE OLSON	<i>Alexander</i>
RUBY LUTHER	<i>Great Bend</i>	LELA PARKER	<i>Trousdale</i>
MARY MCCLELLAN	<i>Norcatur</i>	KATHRYN PARSONS	<i>Hays</i>
ORAL MCMICHAEL	<i>Ford</i>	RALPH PERKINS	<i>Goodland</i>

● ● SOPHOMORES

SCOTTY PHILIP
DAROLD L. POWELL
IRENE RANDALL
BARBARA ROBINSON

Hays
Agra
Ashland
La Crosse

KIRK C. RAYNESFORD
ARTHUR ROGERS
CLAUDE ROGERS
AUDRA ROYSE

Ellis
Hays
Jennings
Langdon

BERTHA RUSSELL
HILDA SCHULTZ
ANNETTE SCROGGS
WARD SHULL

La Crosse
Oakley
Perkins, Okla.
Horton

MARIAN SKAGGS
ROBERT SOLOMON
ETHYLE STRAIT
FRANCES SUCHY

Salina
Hays
Brewster
Great Bend

ROSE SUCHY
LEONARD E. THOMPSON
LUCILLE TICHENOR
MURIEL TICHENOR

Great Bend
Densmore
Russell
Russell

MARY ESTHER TONKIN
LOUISE TWENTER
RUBY UNRUH
MERYL WAMHOFF

Great Bend
Hays
Pawnee Rock
Holyrood



SOPHOMORES ● ●



MILDRED VAN RIPER	<i>Penalosa</i>
BERTHA WASHICHEK	<i>Almena</i>
HELEN WHEAT	<i>La Crosse</i>
JAMES A. WICKIZER	<i>Hays</i>
ELTON WILLIAMS	<i>Ness City</i>
ELEANOR WINTERS	<i>Hays</i>
HELEN STONEBRAKER	<i>Wakeeney</i>
DEAN WIRUTH	<i>Almena</i>
MARTHA AVANELLE WRIGHT	<i>Kinsley</i>
VESTER DAVIDSON	<i>Hays</i>
HARRY R. DAVIS	<i>St. John</i>
BEVERLY TAYLOR	<i>Ness City</i>
GEORGE MAHONEY	<i>Bunkerhill</i>
MAXINE BECKHELM	<i>Kankakee, Ill.</i>

RUTH CONARD	<i>Almena</i>
ELIZABETH DRAGOO	<i>Luray</i>
KEITH FORNEY	<i>La Crosse</i>
MIRIAM L. GONZALES	<i>Stockton</i>
MARY E. LAWRENCE	<i>Wichita</i>
KARL M. LEE	<i>Garden City</i>
RUTH MARIE MEARS	<i>Simpson</i>
DOROTHY H. A. MODINE	<i>Olsburg</i>
VIOLA V. RISHEL	<i>Larned</i>
MARJORIE STEPHENS	<i>Hoisington</i>
JOCK SAUNDERS	<i>Hays</i>
MANDY LOU SPANIOL	<i>Dodge City</i>
CRYSTAL YOUNG	<i>Russell</i>

● ● SOPHOMORES

FAE AHRENS	<i>Greensburg</i>
DOLORES V. ALLPHIN	<i>Palco</i>
ELDORA ASHCRAFT	<i>Quinter</i>
IDA MAE ASHWORTH	<i>Quinter</i>

VALETTIA MAE AVERY	<i>Susank</i>
MILTON J. BAER	<i>Ness City</i>
JOHNNIE BAKER	<i>Minneapolis</i>
GENEVA BARNARD	<i>Medicine Lodge</i>

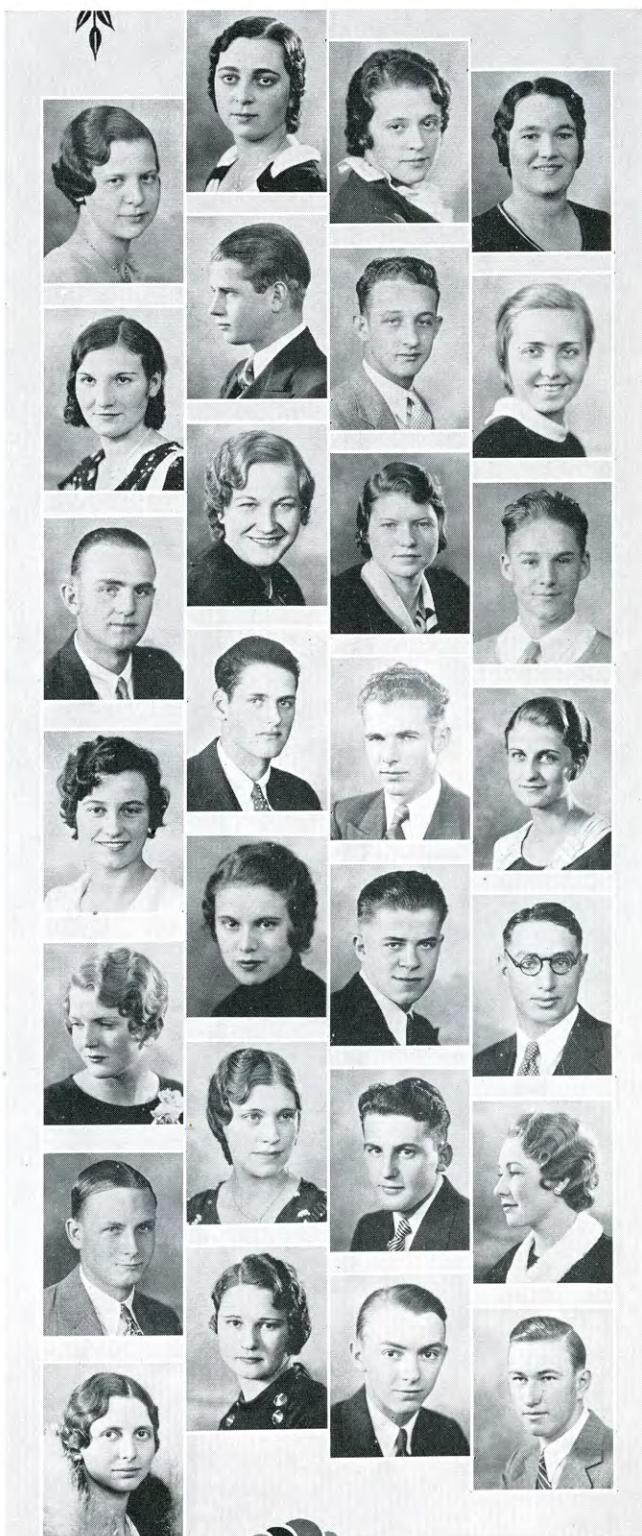
HARLEY BARTEL	<i>Otis</i>
LEORA BEALS	<i>Hoisington</i>
LOURENE BELLER	<i>Russell</i>
SYLVESTER BERG	<i>Clay Center</i>

HELEN FRANCES BICE	<i>Hays</i>
CLYDE V. BILLINGS	<i>Wakeeney</i>
FLOYD BILLINGS	<i>Hays</i>
ELAINE BITTER	<i>La Crosse</i>

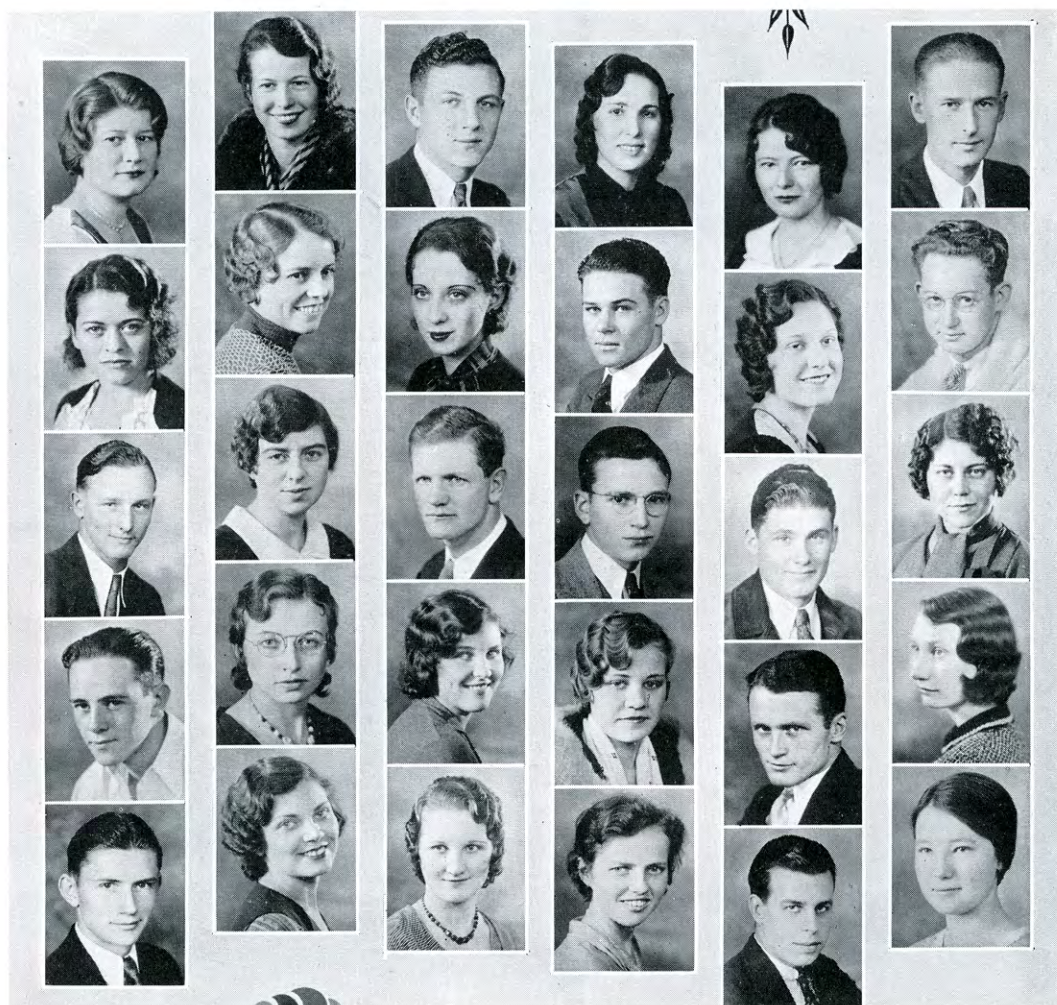
BETTY ANN BOND	<i>Arlington</i>
VERONICA BOND	<i>Manhattan</i>
J. T. BROCK	<i>Hays</i>
HAROLD BROWN	<i>Oberlin</i>

MARK BROWN	<i>Hoxie</i>
RUBY BROWN	<i>Great Bend</i>
WINSTON BROWN	<i>Larned</i>
SALLY BRYANT	<i>Montezuma</i>

MARGARET E. BUNTALL	<i>Ness City</i>
FLORENCE MARIE CASEY	<i>Zurich</i>
DEAN CASWELL	<i>Phillipsburg</i>
EDWARD CASWELL	<i>Oakley</i>



FRESHMEN ● ●



MARY CATHARINE CHURCH	<i>La Crosse</i>
BLANCHE E. COMBEST	<i>Ransom</i>
RUSSELL H. COMFORT	<i>Minneapolis</i>
FAYE CORWIN	<i>Hays</i>
RUTH I. CRAWFORD	<i>Hays</i>
LAWRENCE CRESSLER	<i>Hoxie</i>
ELVA CURRENCE	<i>La Crosse</i>
IDOTHA BOHRER	<i>Oakley</i>
VIRGINIA BELLE DAGUE	<i>Hays</i>
GEORGE DONECKER	<i>McCracken</i>
DORIS DIETRICH	<i>Ogallah</i>
FAY DOUGLASS	<i>Kanorado</i>
WALTER DUNLAP, JR.	<i>Woodston</i>
CLARA E. ELLIS	<i>Stockton</i>
PAUL ENRIGHT	<i>Hays</i>

EUGENE ERBENTRAUT	<i>Minneapolis</i>
MORRIS EVANS	<i>Goodland</i>
LANORE FICKEN	<i>Jelmore</i>
BILL FRIEND	<i>Quniter</i>
DOLLY MAE FRY	<i>Montezuma</i>
HENRIETTA MARIE GIEBLER	<i>Hays</i>
LORAIN M. GRADALL	<i>Hopewell</i>
LLOYD GRADY	<i>Colby</i>
ANNA C. HACKMEISTER	<i>Natoma</i>
WAYNE HAMMOND	<i>Hays</i>
PHYLLIS HANLEY	<i>Norton</i>
ALVEDA HANSON	<i>Ogallah</i>
MARJORIE A. HARKNESS	<i>Hays</i>
FRED HUTTIE, JR.	<i>Russell</i>
LUCY HYDE	<i>Hays</i>

● ● **FRESHMEN**

EMMA LOUISE HAVEMANN *Hays*
 WAYNE HERZOG *Herndon*
 MILAN M. HINKHOUSE *Palco*
 H. DALE HOBBS *Phillipsburg*

FLORIAN HOLM *Hays*
 DONALD HOOVER *Macksville*
 MERRIDA LUCILLE JEMISON *Osborne*
 CLARENCE KAHLER *Holyrood*

ELOISE KELSEY *Larned*
 IVAL KERN *Zurich*
 BLANCHE IRENE KINKAID *Medicine Lodge*
 JOHN S. KIRKMAN *Hays*

JOE KOELSCH *St. John*
 LUCILE LEAVELL *Allen*
 RUTH LIVINGSTON *Menlo*
 ESTHER LOFLIN *Ogallah*

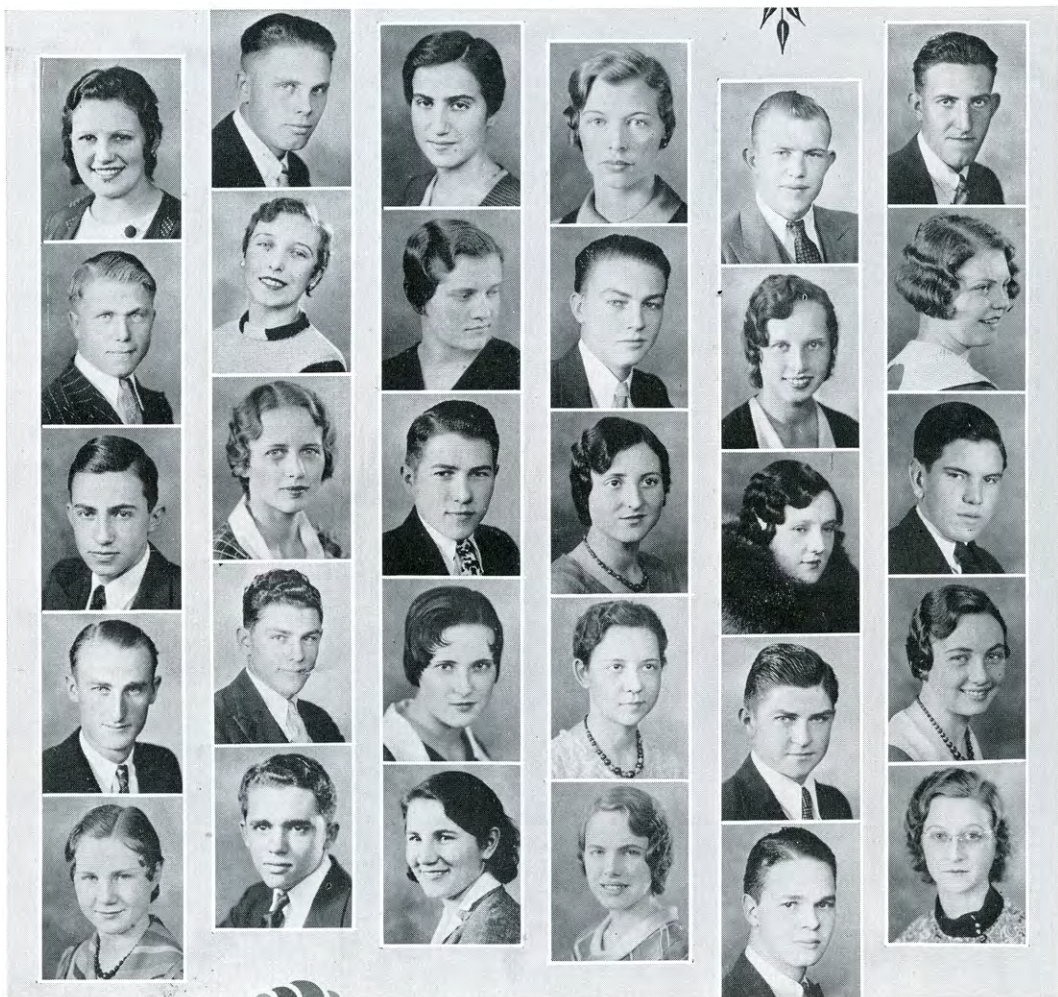
ESTHER A. LOUDERBAUGH *Kanopolis*
 LORA LUTHER *Great Bend*
 MARIE MCCORMICK *McCracken*
 WINIFRED MCCOY *St. John*

WARREN MACY *Woodston*
 ALTA MARSHALL *Minneapolis*
 HELEN MARTIN *Quinter*
 MARGARET E. MAYFIELD *Wichita*

ALTA MESSICK *Oakley*
 CHESTER MEYER *Woodston*
 WENDELL MONTGOMERY *Brownell*
 GOLDIE ELLEN MOSS *Hoxie*



FRESHMEN ● ●



ESTHER NELSON	Reamsville
GEORGE NELSON	Scandia
CLARA NICHOLAS	Hays
MARGARET ELIZABETH OSHANT	Hays
SYLVESTER L. PALMER	Natoma
LEWIS PANKASKIE	Dresden
CHARLES PARKER	Luray
BERTHA PARSONS	Hays
MARGUERITE PERKINS	Utica
DERRILL PRATT	Hays
WILMA A. RATZLAFF	Cheney
RENA REED	Hays
BEN RHOADES	Hays
ROSEMARY ROBERTS	Benedict
CLARE HOWARD ROYSE	Langdon

ADELE MAY SATTERLEE	Macksville
HELEN AWANDA SAWYER	Arapahoe, Colo.
DONALD SCHOENFELDT	Hays
EDWIN SCHULTE	Rexford
HERMAN SCHWARTZKOPF	Alexander
MADGE SEHNERT	Bison
HELEN A. SMART	Stafford
ELMER SPOMER	Alexander
IRIS STEVENSON	Hays
MILDRED STEVENSON	Hays
ERVIN STEVER	Trousdale
BESSELEE LOWERY	Dodge City
MARY LOUISE WALKER	Hays
KENNETH L. WELLS	Hays
MRS. EVA WOODRUFF	Englewood

● ● FRESHMEN

ANNE L. STRAIT *Brewster*
 VIOLA RUTH STRECK *Russell*
 EARL H. STUM *Russell*
 MARIE ORDELIA TROTTER *Kinsley*

LOWELL C. TRULL *Kansas City, Kansas*
 GLADYS TURNER *Menlo*
 GLOYD VOGLE *McCracken*
 WILLIAM VOSS *Almena*

MAURICE WAELDIN *Hoisington*
 GLADYS WALKER *Junction City*
 GRACE WALKER *Junction City*

CHRISTINE WASINGER *Hays*
 OPAL WENGER *Selden*
 MILDRED WILLIAMS *Hays*
 LUCILLE WILSON *La Crosse*

MAURICE B. WILSON *Hays*
 GERALD WORTHINGTON *Minneapolis*
 AYLIFFE YOKE *Zurich*
 FAYE YOUNG *Bloom*

NADYNE CALVERT *Hays*
 HAROLD CONRAD *Plainville*
 BEN W. HUNT *Augusta*

VELMA L. KILLINGBECK *Ness City*
 MARJORIE L. PERFECT *Jewell*
 WIMBERLY PIATT *Hays*
 MERRILL WHEATCROFT *Dighton*



FRESHMEN ● ●

William Picken's and the Kids - - -

THE *William Picken Training School* has been on the college campus for only two years. Before that time it had, however, operated for two or three years on the campus for a period of six weeks only during the summer session.

The school is open to boys and girls of school age irrespective of residence. However, the number of pupils in each grade is limited. The school is organized on a departmental basis. Each department is in charge of a supervisor and her assistant teachers. These

constitute the faculty for the department.

All the facilities of the college, such as the gymnasium, the swimming pool, the library, and the college laboratories are used by the pupils in the *William Picken School* just as they are used by the students in the college. The college physician and the college nurse give the same service to the pupils in this school as is given the regular college students. A school clinic and health inspection constitute a very definite part of the service given the pupils.



Memories of the Seniors

EACH year sees a new group of students graduating and leaving the campus, some perhaps never to return. These people leave vacancies that are possibly never quite filled. Each student, as he comes and goes, fills his own particular niche in the affairs of the school.

We are sorry not to be able to print snaps of each member of our graduating class, but that, of course, is impossible.

Next year we shall miss "Jimmie," who takes with him perhaps the only authentic southern brogue of which our campus can boast. Vyrl, by his cheery smile, and many activities, has won quick friendships and recognition. Carl will leave a big hole in both our football and basket ball teams. "Hunk" and Palmer are both well-known to students on the campus, and will be greatly missed when they leave. "Tommy" seems almost a permanent fixture. Effie and Louise are going to be missed by their many friends. Helen is well-known in her many activities and has made many friends who will miss her next year.

We regret losing them, but to these students, and to all others leaving our campus this year, we wish the best of success.



Clippings from the Leader - 1932-'33

FORT HAYS STATE COLLEGE HOMECOMING WILL BE OCT. 29

TIGERS DOWN HORNETS 13-0

Team Shatters Jinx
Sixth Captain
Against Former
Teammates

"Jinx" took one of the hands of the team, Coach Riley's crew, down Emporia Teachers here, 13 to 0.

could not have been sweetened, former Emporia star, kick and scored both of the first coming on a pass to Harbaugh, after a pass to Harbaugh which put the ball on the one line. The second tally came as Sexton's 38 yard dash and a touchdown-saving tackle quarter after an Emporia

line played as one big man on the job play, football as was proven by Hornets for down line in the second

LOSERS
R TEAM

Defensive
ing to End
Hays

BLUE

LOSERS
R TEAM

Defensive
ing to End
Hays

BLUE

LOSERS
R TEAM

Defensive
ing to End
Hays

BLUE

LOSERS
R TEAM

Defensive
ing to End
Hays

BLUE

LOSERS
R TEAM

Defensive
ing to End
Hays

BLUE

LOSERS
R TEAM

Defensive
ing to End
Hays

BLUE

LOSERS
R TEAM

Defensive
ing to End
Hays

BLUE

LOSERS
R TEAM

Defensive
ing to End
Hays

BLUE

LOSERS
R TEAM

Defensive
ing to End
Hays

BLUE

LOSERS
R TEAM

Defensive
ing to End
Hays

BLUE

ALL DAY CELEBRATION ANNOUNCED BY COLLEGE

TIGERS DEFEAT BETHANY 13-0

Many High School Teams
Witness First Home
Game of the
Season

The Tigers opened their 1932 home football schedule last Friday with a 13 to 0 victory over the Bethany "Swedes" in a non-conference night game played before a large crowd, including many high school players from surrounding towns.

After scoring in each quarter of the first half, the Tigers were content in the last half to merely protect this commanding lead.

The line-up:

HAYS	Pos.	BETHANY
Hawkes	LE	Anderson
Ziegler	LT	Hartshorne
Rogers	LG	Erickson
Dreiling	C	Everly
Wilson	RG	Quongquist
Brown	RT	Hedderstedt
Harbaugh	RE	Webster
Woodruff	QB	Matterson
Sexton	LH	Soderberg
Casser	RB	Bruce
Beasley	FB	Bergstrom

Score by periods:
Hays 6 7 0 0-13
Bethany 0 0 0 0-0

Scoring: Touchdowns, Harbaugh and Palmer (each for Sexton); point after touchdown, Woodruff (place kick).
Summary: Earned first downs—Hays 14, Bethany 5; yards gained from scrimmage—Hays 229, Bethany 64; yards lost from scrimmage—Hays 24, Bethany 31; passes—Hays completed 6 of 11 for 92 yards, Bethany completed 8 of 19 for 60 yards, two intercepted; punts—Hays 9 for

Game with Wheatshockers
Main Feature of Day's
Entertainment.

TIGERS TO MEET ANCIENT RIVALS

Can They Break Emporia's
Jinx Held over Them
Nine Years?

Tomorrow night at eight o'clock the fighting Tigers will meet the Emporia Teachers on Lewis Field. Coach Riley's crew will be facing a grave problem. In nine years of football relationships with the Yellowjackets of Emporia the Tigers have yet to win a game. Can this year's team break this jinx?

The battle tomorrow night should prove to be a good one with each team playing its opening game of its competing schedule, and the Tigers will be fighting to throw off that nine-year jinx.

The line-up:

HAYS	Pos.	EMPORIA
Hawkes	LE	Sawyer
Meyers	LT	Webb
Rogers	LG	Katsink (Cap)
Dreiling	C	Gallentine
Wilson	RG	Mortill
Brown	RT	Stube, Swanson
Harbaugh	RE	Colton, McCoy
Woodruff	QB	Fraleigh
Sexton (Cap)	RB	Conway
Casser	FB	Gould
Beasley	FB	Parvis

INTRAMURALS

By Dan Lindsay

Winning their sixth consecutive victory Wednesday, Feb. 15, the Independent basketball team walked off with high honors and the jinx's share for the intramural basketball tournament.

By catching the final game from the strong Phi Sig aggregation, the Independents definitely avoided a three-way tie with the Sigma Tau's and the Phi Sig's. The various team's standings are as follows:

TEAM	W	L	Pts.
Independents	6	0	115
Sigma Tau Gamma	5	1	80
Phi Sigma Epsilon	4	2	79
Hadley's	2	4	20
V. M. C. A.	2	4	89
Kappa Beta Tau	1	5	49
Phi Ma Alpha	1	5	40

According to the point system followed in the intramural games each team receives 5 points for every game played, 10 points for every game won, and the winner is allocated an additional five points. Combining the soccer and basketball the independents have the following in points toward the Intramural trophy, which is now held by Phi Sig.

U. S. A.	150
Sigma Tau Gamma	140
Phi Sigma Epsilon	140
Alpha	70
Beta Tau	40
Phi Sig	40

Next on the program for intramural athletes. According to the director of intramural athletics, wrestling entries must be in by Feb. 26. The final line for fighting will be March 4, with the series starting in the second week of March.

EMPORIA GAMES THIS WEEK END

Hays Tigers Leave to Meet
Teachers and C. of E.
and Saturday

The Tiger quintet will play their second and third games on foreign courts, when they attack the Emporia Teachers and Presbyterian at Emporia Friday, and Saturday afternoon.

These will be the eleventh and twelfth games of both the Hornets and Tigers in their three year history.

In previous encounters with the Teachers and the Presbyterian, the Tigers have emerged with one victory and seven losses.

The Teachers are a strong team, having won the championship of the state in basketball last year.

The Presbyterian team is also a strong one, having won the championship of the state in basketball last year.

The Tigers will be looking for a victory in these games, as they are the only ones left standing in the tournament.

The Tigers will be looking for a victory in these games, as they are the only ones left standing in the tournament.

The Tigers will be looking for a victory in these games, as they are the only ones left standing in the tournament.

The Tigers will be looking for a victory in these games, as they are the only ones left standing in the tournament.

The Tigers will be looking for a victory in these games, as they are the only ones left standing in the tournament.

The Tigers will be looking for a victory in these games, as they are the only ones left standing in the tournament.

The Tigers will be looking for a victory in these games, as they are the only ones left standing in the tournament.

The Tigers will be looking for a victory in these games, as they are the only ones left standing in the tournament.

The Tigers will be looking for a victory in these games, as they are the only ones left standing in the tournament.

P H Y S I C A L

I M P R E S S I O N S

THE school year of 1932-33 saw the close of a season of competitive athletics which, while not as successful as was hoped at the beginning of the year, was satisfactory. The strength of any team depends to a large degree upon the coach. Fort Hays Kansas State College is fortunate in having some very fine coaches.

WILBUR "JACK" RILEY, head coach of the Tiger football squad, won many of his football games this year because of his ability to cooperate with all the boys. At the end of the season, records showed a great improvement over these of last year. If predictions are correct, "Jack" will have a squad next fall that will be hard to beat.

PAUL "BUSCH" GROSS, head coach of the Tiger basket ball team, and

assistant football coach, produced a squad this season that made all the conference teams "look up and take notice." We must admit that the Tigers did not have the successful season that they had last year, but we must also admit that competition was keener this year than for several previous years. "Busch" is highly respected by all the student body, and with their cooperation should win first place in the conference next season with his squad.

JAMES "JIM" YEAGER, football line coach and instructor in physical education, is responsible for the great improvement in our Tiger line. The football squad admire "Jim" and are always willing to do as he says. He sponsors the program of intramural athletics on the campus.

PAUL GROSS
Basket Ball Coach

WILBUR RILEY
Head Football Coach

JAMES YEAGER
*Football Line Coach and
Track Coach*



Making the Teams

ATHLETICS bulk large in a program of physical activities. Track and field events, highly organized sports such as baseball, football, and basket ball, and athletic games calling for a considerable amount of physical exertion and utilizing the element of competition are highly important in the recreation program. Their value lies not only in the muscle development and in improved health, but in that training for leadership, for good sportsmanship and citizenship which is the ultimate aim of the athletic program.

Much detailed planning is involved in the athletic program. There are questions of classification, of schedule making, of methods of scoring, of testing for physical efficiency and of arranging for tournaments. All these practical considerations and many others are fundamental to the conduct of a successful program. Much more difficult of solution, however, are the problems involved in questions of professionalism and commercialism in amateur athletics and in the dangers threatening in the tend-

ency to develop winning teams at all costs and star players rather than many participants of mediocre ability. These dangers are not bound up with any essential need of athletics but are outgrowths of the failure on the part of some authorities to make athletics a positive, constructive force in education. The recreation program in its athletic phases is concerned with providing a program for the amateur who plays for the love of the game and to whom sport is nothing more than an avocation. It is only through leadership that the moral values of athletics can be made a part of life.

Organization and leadership are the important factors in all sports. One who is an ideal leader should bring to his task the ability to develop leadership in others and the art of leading rather than directing. Boys and girls who wish to become active members in any sport should keep physically fit at all times and do all in their power to keep all the regulations given to them by their leader.



Intramurals

IN THE upper right hand corner we have the intramural champion basket ball team. They won nearly every game in which they participated. "Fuzzy" Enright, the manager, kept his men in perfect con-tion at all times.

Below is the intramural champion soccer team. Their playing showed that they kept themselves in per-

fect condition at all times. They were always on the go, fighting with all their might.

The Kappa Beta Tau fraternity were the winners of the intramural wrestling matches. They were fortunate in that they lost only a few of their matches. Their style of wrestling showed that they had trained very regularly.



RUSSELL SCHMITT, guard, has played his last year with the Tigers. He was often called "Stonewall" Schmitt, for to run up against him was like hitting a stone wall. "Jack" Riley will have to do a lot of scouting to find a man as valuable as Schmitt.

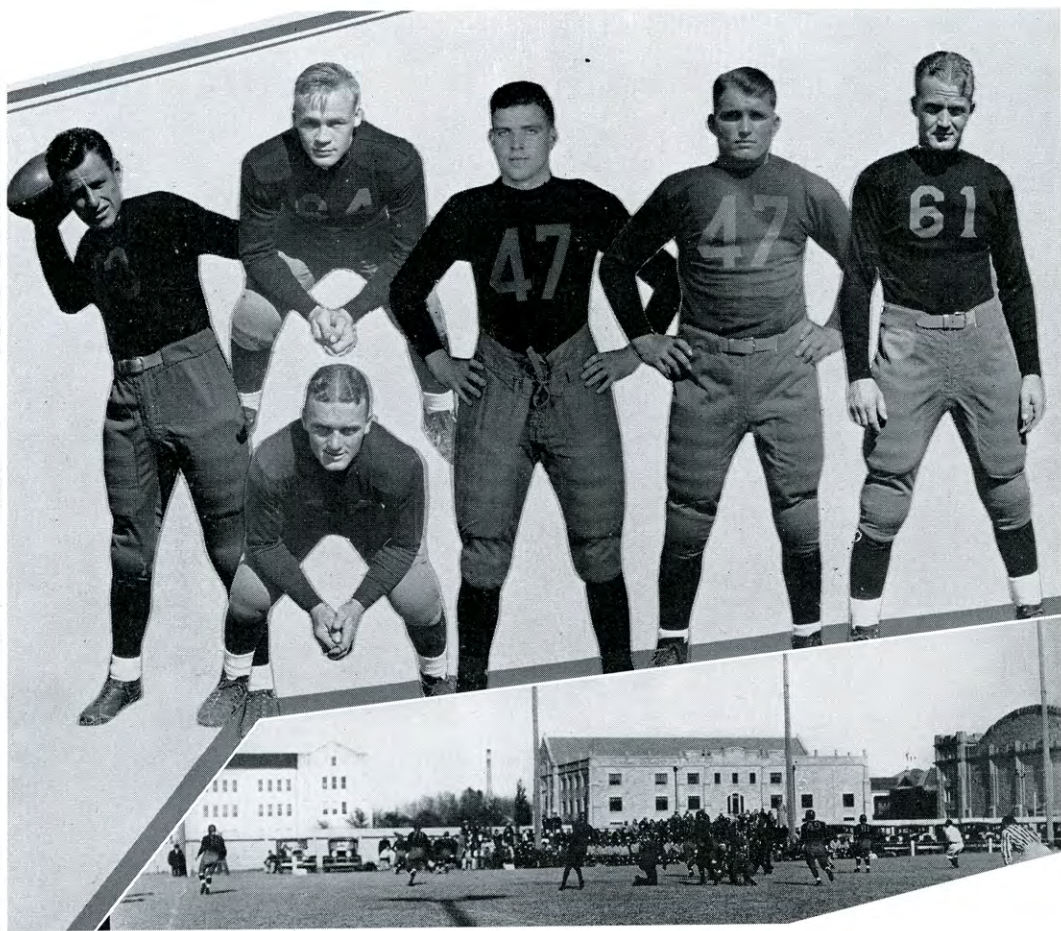
DENNIS MCKEE, guard, played his first year with the Tigers. He will be back for his second letter next year.

RENNIE ZEIGLER, tackle, received his second "K" this season. He adds strength to the line and never gives up fighting.

CARL THURLOW, end, has received his last punishment with the Tiger football squad. He seldom let an opponent get by, and his ability to catch passes added many yards to the Tiger gains. We only hope that the Tigers are able to find more men like Thurlow.

SYLVESTER PALMER, halfback, won his first "K" this season. His forty-yard run will never be forgotten.

JOHNNY BAKER, quarter, is expected to be a valuable man to the Tigers next fall.



ALEX FRANCIS, halfback, is known for his ability to pass and place-kick. If given half a chance he is nearly always successful with his kicks. Competing teams watch him closely.

WARD SHULL, fullback, co-captain for 1933, has been a great asset to the Tigers the past three seasons. He is expected to come back next fall, bigger and better than before.

ROBERT CASNER, halfback, will leave a space in the Tiger back-field that will be very difficult to fill. He is rated as the best blocking back in the conference.

DEAN SKAER, end, played his first year with the Tigers. He was one of the players who would never give up.

EDWARD BENDER, guard, received his first letter with the Tigers this fall. He brought the fans to their feet many times with his spectacular tackles.

ALBERT HAWKES, guard, earned his second letter this fall. Although he was caught fist-fighting in a number of games, he has proved to be a valuable asset to the Tiger squad. He will not be with the Tiger squad next fall.



FLOYD SEXTON, quarterback, played his first season this year. He is known as the star open-field runner of the conference. He was placed upon the first All-Conference team.

FLOYD McLANE, center, made his first letter this year. Next year should find him adding power to the tackle.

VERNON MOREMAN, tackle, a four-letter man, always gave all he had to win.

FRANK DREILING, center, is a steady, consistent player. He is expected to add power to the 1933 squad. He was found fighting all the time.

"TINE" HARBAUGH, end, received his fourth letter this year. His four years of service to the Tigers will never be forgotten. His ability to catch passes added many yards to Tiger gains. "Tine" was placed upon the second All-Conference team and was co-captain for the 1932 squad.

HAROLD BROWN, tackle, earned his first letter this season. He will be a valuable man next year.

JESS WOODRUFF, quarterback, is known for his flashy side-stepping. This is his last year and he will be missed by the 1933 squad. Jess could take it on the chin and smile.



WOODROW REINHOLD, tackle, is a steady, consistent player, and will be in action for the Tigers next year.

MERVIN WILSON, guard, will not be back with the Tiger squad next fall, and to find a man to fill his position will be very difficult. Wilson was never very talkative, but made up for it with his fighting ability.

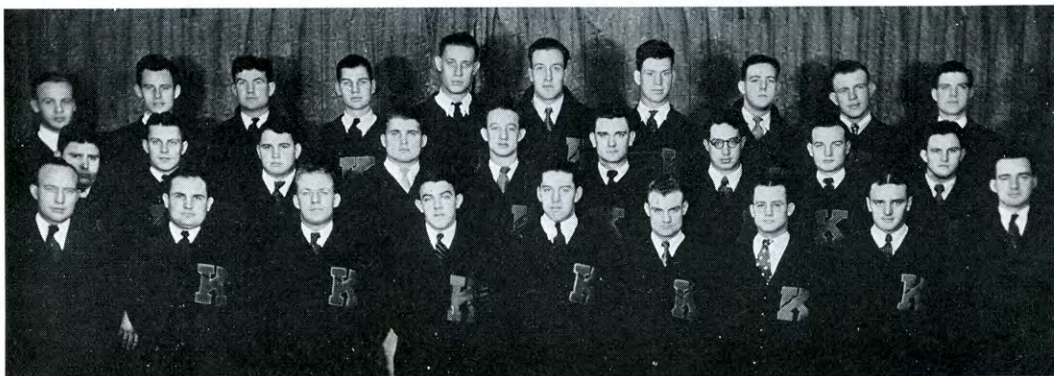
ARTHUR ROGERS, guard, served most of nearly every game. When a weak spot was found, Arthur was called upon to stop the plays, and always succeeded in doing so. He is planning to be with the squad again next year.

LAWRENCE MYERS, tackle, served his third year with the Tigers. "Red" could always be relied upon to keep up the old spirit.

RAY MORTON, halfback, received his second "K" this fall. His ability to shift will add power to the Tiger line-up next year.

WILLIAM BEARLEY, fullback, is known as the spirit of the squad and will be a very valuable man next fall. He has taken some hard knocks, but always came up with a smile.

WILLIAM LARSON, guard, is the largest man on the team and when he hits they know it.



Top row—SHULL, FRANCIS, MOREMAN, REINHOLD, McLANE, LARSON, MYERS, HARBAUGH, PALMER, SKAER.

Second row—SCHMITT, LANE, ZEIGLER, BENDER, BAKER, McKEE, H. BROWN, MORTON, V. BROWN.

Third row—Head Coach RILEY, BEARLEY, DREILING, SEXTON, WILSON, WOODRUFF, ROGERS, CASNER, Assistant Coach YEAGER.

Playing in one of the fastest conferences in the middle west, Coach Riley's team won four of their nine games this year.

One of the high lights of the season was the victory over Emporia Teachers, the first for the Tigers in ten years of football relationship with the Hornets.

Two out-of-state games were played, with one victory and one defeat. The Greeley Colorado Teachers, one of the strongest teams in Colorado last season, eked out a 7 to 0 victory in the first game of the season, played at Greeley, Colorado.

1932 FOOTBALL SCHEDULE

HAYS	0	Greeley, Colorado	7
HAYS	13	Bethany	0
HAYS	13	Emporia	0
HAYS	0	Washburn	13
HAYS	0	College of Emporia	6
HAYS	18	Kearney, Nebraska	0
HAYS	10	Southwestern	0
HAYS	0	Pittsburg Teachers	13
HAYS	3	Wichita University	19

1933 FOOTBALL SCHEDULE

Sept. 29	Wichita University	there
Oct. 6	Emporia Teachers	there
Oct. 13	Pittsburg Teachers	here
Oct. 20	Southwestern	here
Oct. 27	Bethany	there
Nov. 4	Panhandle A. & M.	here
Nov. 11	College of Emporia	here
Nov. 18	Washburn	there
Nov. 25	Kearney Teachers	here
Nov. 30	Kansas Wesleyan,		
		Salina	there

The Cagers

THE basket ball team, which is under the tutelage of Coach "Busch" Gross, failed to place among the first three of the conference leaders this year. However, the team's play at different times during the season was almost sensational. At other times, when the offensive failed to function, the Tigers lost to teams weaker than they. In spite of the fact that the Tigers failed to win the cage championship, they were feared by every opponent in the conference. During the season nineteen

games were played, the Tigers winning nine and losing ten. The season can be summed up in a few words. The Tigers' defensive was one of the best in the conference. The erratic playing of the offensive was all that kept them from a conference title.



CAPTAIN

Norman Lietzke, guard, played his third year with the Tigers this season. He has added many points to the Tiger score card. He will be with the squad again next year. He was captain of the squad this season.



SKAER

SCHWARTZKOPF
SEXTON

THURLOW

RARICK

WILKINSON

MORIARTY

LAMOREUX

SEXTON

LIEZKE

GROSS



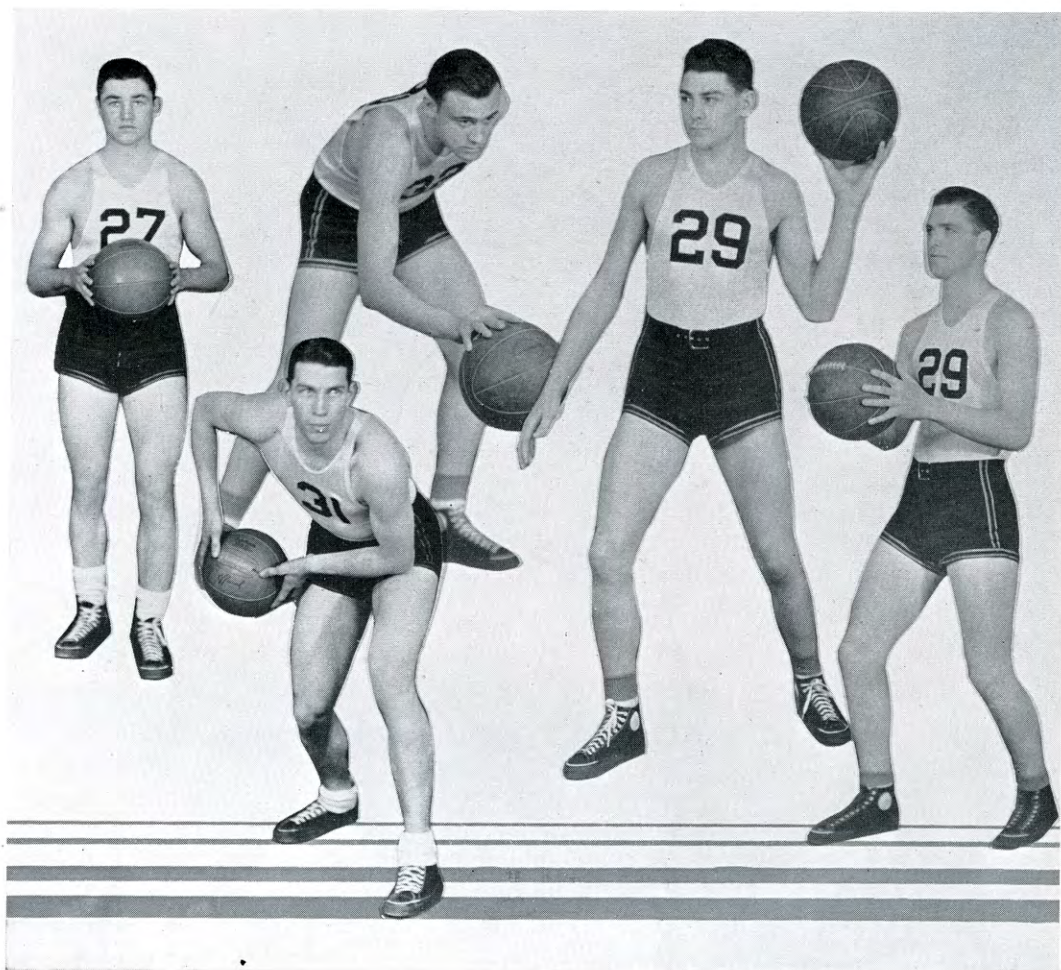
ROBERT CASNER, forward, played his first and last year with the Tigers this season. He is considered one of the best forwards ever to play on the Tiger squad. He is an all-round athlete, and always gave all he had to win.

FLOYD SEXTON, forward, played his first year with the Tigers this season. Casner and Sexton work together very smoothly. Sexton will be with the squad next year with more power than ever.

CARL THURLOW, guard, is known for his ability to think out plays. His quick thinking won many of the games this season. Thurlow received a place upon the All-Conference team this season. A guard to fill Thurlow's position will be almost impossible to find.

LAWRENCE RARICK, forward, played his last season with the Tigers and will leave a hole in the 1933 squad that will be hard to fill.

BASKET BALL ● ●



WADE MORIARTY, guard, was a reserve guard this year but proved himself an asset to the Tiger squad whenever given the opportunity.

HOWARD LAMOREUX, center, added spirit to the squad and always kept an eagle eye on his opponent. He will be with the squad again next year. He was elected captain of the 1933 team.

MERLIN WILKINSON, forward, is known as the "one-hand man" for he seldom misses his one-hand shots.

HERMAN SCHWARTZKOPF, center, played his first year with the Tigers this season. He proved his ability to be a member of the Tiger squad in the first two games of the season.

DEAN SKAER, guard, played with the Tiger squad for the first time this season. He was unable to play in a number of the games this year, but will be valuable to the 1933 squad.

● ● BASKET BALL

Track

BBROWN, low hurdles and dash, is known for his quick start and smooth stride.

CASNER, 440, 880, will be especially remembered for the number of points he has won for Fort Hays.

NEVE, hurdles, is a sophomore and is expected to aid in winning many points for the track team next year.

SCHWARTZKOPF, pole vault and high jump, with a year's experience will no doubt add many points to the list.

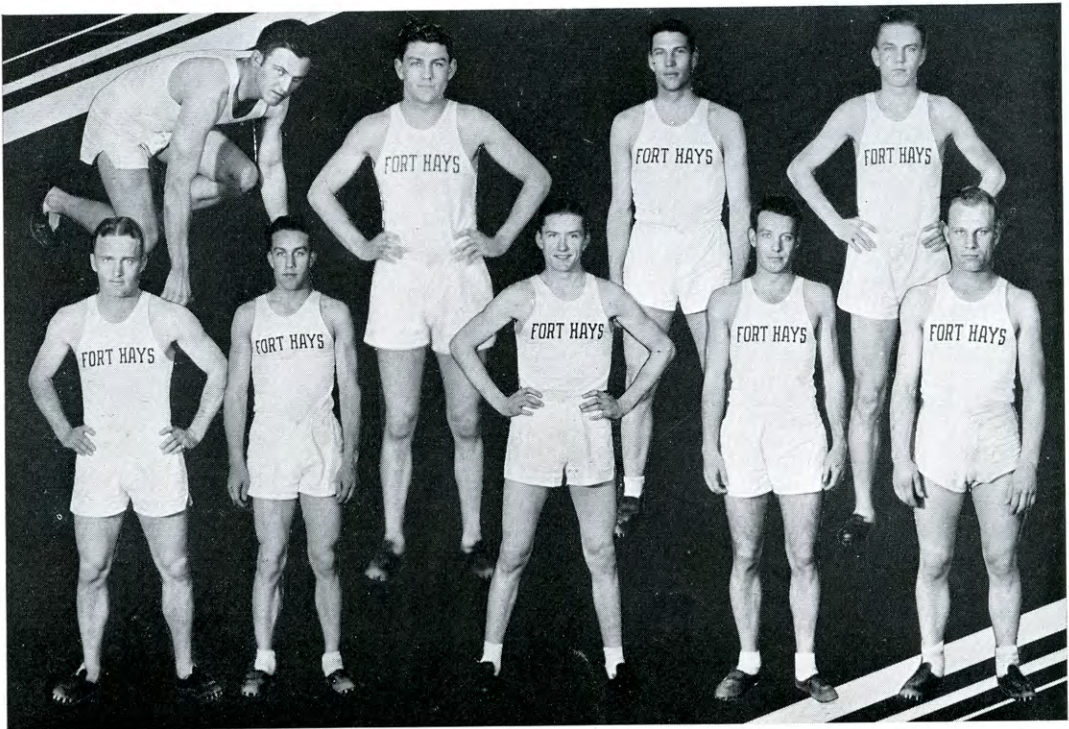
HUNT, 880, and the mile, is expected to be a great asset to the team next year.

LAMOREUX, pole vault and high jump, fits right into the team as one of the men to build up the average.

RUNYAN, javelin, is an inexperienced man, but will no doubt be one of the outstanding men on the track team next year.

Hoover, pole vault and high jump, is only a freshman, but with experience will prove to be an outstanding track man.

SOLOMON, 440, 880, will be with us again next year. He is known for keeping close tab on training rules.



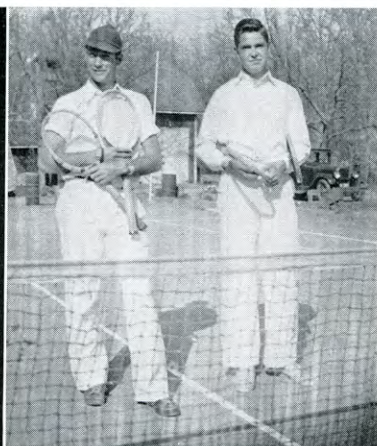
Tennis and Golf

RUNYAN and BARCLAY, freshmen, are members of the tennis team. They were unable to win first title this year, but are very crafty with the racket and will undoubtedly aid a great deal in the winning of the conference tennis championship next year.

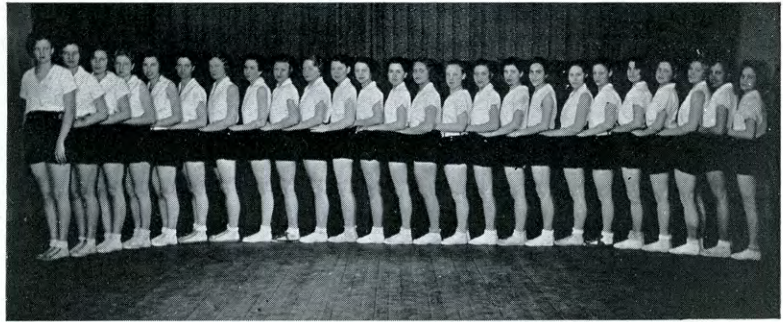
FRIEND and WICKIZER, members of the tennis team, have proved themselves capable of holding first place in the conference this year. They took both the singles and the doubles against the College of Emporia.

WORTHINGTON and PALMER think there is nothing like playing a round of golf. Worthington's score is usually between 36 and 38—Palmer's score is usually about the same. They could no doubt give stiff competition in the conference.

One of the most popular of spring sports on the campus is horseshoes. Many of the tedious hours between classes are whiled away at this pleasant pastime. Last year the horseshoe tournament was won by Wade Moriarty and Jess Woodruff.



RUNYAN and BARCLAY
FRIEND and WICKIZER
WORTHINGTON and PALMER



Major Club

Women's Athletic Association

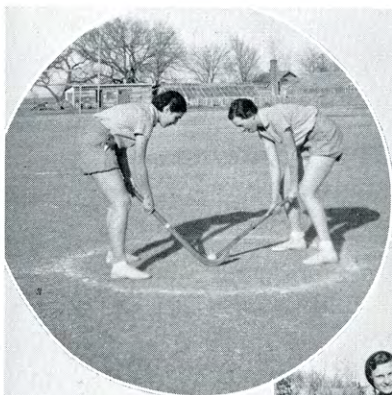
THE *Major Club* consists of majors and minors in women's physical education. It sponsors horseback riding and camping and assists in carrying out the physical education program of the college. *Martha Wylie* is president of the Major Club.

The local organization of the *Women's Athletic Association* spon-

sors an athletic program for women, emphasizing both team and individual sports. Each spring the *W. A. A.* holds an invitation Play Day for high school girls in Western Kansas, with a program based on play and health rather than competition. *Mildred Schlyer* heads the *W. A. A.* this year.

The extra-curricular sports program, under the direction of the *Women's Athletic Association*, consists of an intramural program with hockey and basket ball as the major sports. Intramural tennis, speedball, baseball, tenekoits, and horseshoe contests are also held.

Freshmen physical education classes have a sports program consisting of soccer, swimming, and hit-pin baseball.



Bully

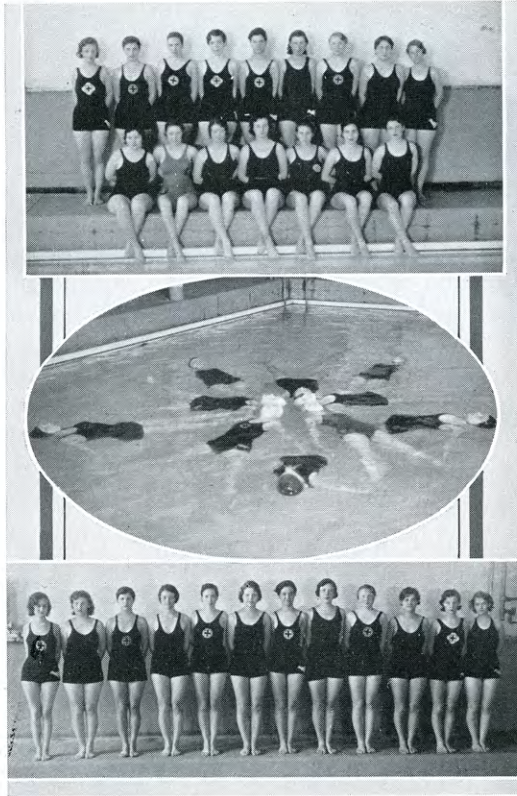
Strike one

A soccer dribble

Close guarding

A speedball punt

A hockey pass



The Duck Club is an honorary swimming organization maintaining a minor group, called the Ducklings, who have passed only the preliminary test. Each spring the Duck Club presents a water festival, including formation swimming, life-saving demonstrations, and musical and dramatic water performances.

Mr. A. T. McCue, Red Cross life-saving representative, administers Red Cross tests for life-saving badges to large classes each year. The present life-saving corps is: Virginia McFarland, Edith Palmer, Yuba Hunsley, Henrietta Giebler, Maurine Hunsley, Virginia Maxwell, Margaret Nicholas, Mary E. Reed, Rena Reed, Katherine Rhoades, Mildred Schlyer, Lucile Tichenor, Helen Wheat, and Ida Marie Wickizer.



From "*Lucia di Lammermoor*"

Orchesus

THE women's physical education department includes classes in national, character, folk, clog, and interpretive dancing in its regular schedule. It also maintains an honorary dancing club— *Orchesus*.

The biggest program for the year was presented in connection with

the opera "*Lucia di Lammermoor*", when sixteen girls from the department took part in a court dance and interpreted "*Dance of the Hours*" from the opera "*Giaconda*", featuring *Nora King* as the sun and *Maurine Faulkner* as the evening star.

The "K" Club

THERE are forty-one active members of the "K" Club on the campus. Their purpose is to assist in the sponsoring of good, clean, and healthful activities. During such occasions as the annual spring high school basket ball tournament, held at the college, the members of the "K" Club play a large part in conducting the programs.

Membership is earned by winning a letter in inter-collegiate competition in either major or minor sports.

MEMBERS

JOHN BAKER
WILLIAM BEARLEY
EDWARD BENDER
HAROLD BROWN
LEO BROWN
VIRGIL BROWN
ROBERT CASNER
FRANK DREILING

GORDON FARR
ALEX FRANCIS
TINE HARBAUGH
HOWARD LAMOREUX
BERT LANE
NORMAN LIETZKE
ROY LOVITT
PETE MEULI
LAWRENCE MYERS
DENNIS MCKEE
FLOYD McLANE
VERNON MOREMAN
RAY MORTON
WADE MORIARTY
WILLIS NEAL
LAWRENCE RARICK
WOODY REINHOLD
SYLVESTER PALMER
ARTHUR ROGERS
HERMAN ROTHE
FLOYD SEXTON
HERMAN SCHWARTZKOPF
WARD SCHULL
DEAN SKAER
CARL THURLOW
MERLIN WILKINSON
MERWIN WILSON
JESSE WOODRUFF
RENNIE ZIEGLER



Top row—L. BROWN, BENDER, FRANCIS, REINHOLD, McLANE, LIETZKE, PALMER, HARBAUGH, SKAER, H. BROWN.

Second row—FARR, MORIARTY, MORTON, MCKEE, BAKER, SCHMITT, SEXTON, ROGERS.

Third row—BEARLEY, LANE, LOVITT, MEULI, HOOVER, NEAL, WOODRUFF, CASNER.

Fourth row—YEAGER, RILEY, GROSS, PARKER.



WILKINSON

PALMER

SEXTON

THURLOW

Recognition

"CHIEF" WILKINSON, forward for the Tiger basket ball squad, is known for his excellent one-hand shots. He was placed upon the second All-Conference team last year. "Chief" is only a junior and is expected to do big things for the Tigers next year.

EDITH PALMER was elected All-Round girl by the Women's Athletic Association last spring. This means that she was superior in many lines of activity. Edith was one of the cheer leaders this year, also.

"COCKY" SEXTON, quarterback for the Tiger football team, was placed upon the first All-Conference team this year. He is a junior, and no doubt will be an outstanding man on the squad next fall.

CARL THURLOW, guard for the basket ball team, and end on the football squad this year, was placed upon the first All-Conference teams the past two years, and is rated as one of the best basket ball men in the state.



F I N E A R T

I M P R E S S I O N S

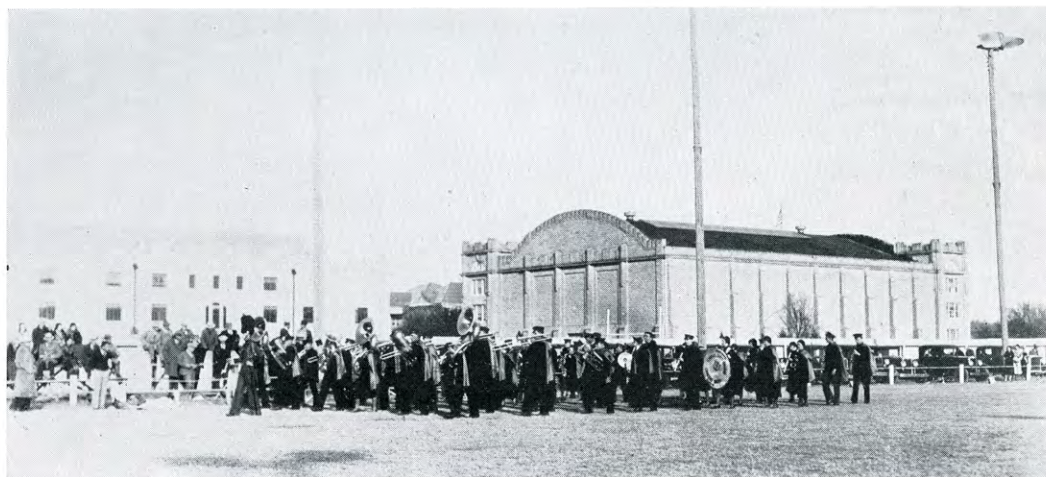
FORT HAYS Kansas State College has a very strong music department. For a number of years, it has sponsored a Music Festival in which students from a number of high schools in this section of the state participate.

Each spring the girls' and boys' glee clubs of this college make a concert tour to various surrounding towns. The response to these tours has been pleasing. The glee clubs give very fine concerts.

Band and orchestra are two of the leading activities on the campus.

The orchestra is directed by *Professor H. E. Malloy*; the band by *Professor Frederic Green*.

The Fort Hays Kansas State College has been fortunate in securing noted artists to appear on our campus. Such artists as *Madame Schumann-Heink*, *Rosa Ponselle*, and *Toscha Seidel* have appeared before the student body of our college. This year, students and town people were privileged to hear the opera, "*Lucia di Lammermoor*."



F. H. K. S. C. Band Parading on Lewis Field



Women's Quartette
WRIGHT, McREYNOLDS, DENNIS, SPANGLER
CALVERT, *Accompanist*

Men's Quartette
DAVIS, MALCOLM, RAYNESFORD, FORNEY

String Quartette
WILLIAMS, WEIGEL, GARDNER, SHERER

THE Women's Quartette has appeared before several civic organizations in Hays, as the Rotary Club, the Lions Club, and the Chamber of Commerce. They also made a trip to Norton, where they sang before the Norton Chamber of Commerce.

The Men's Quartette is an important feature on the men's glee club programs. We are very for-

tunate in having two very fine quartettes this year.

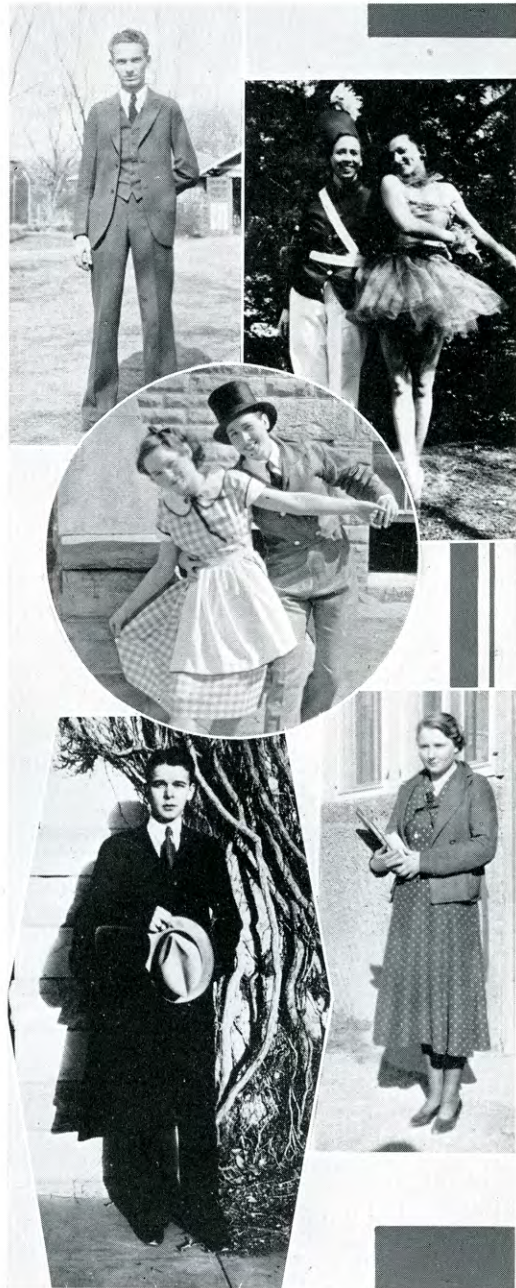
The String Quartette is the first of its kind that we have ever had on this campus, and we have reason to be justly proud of it. The String Quartette and Women's Quartette broadcast over the radio at Dodge City when on a Kansas State Teachers Association program at that city in November.

Music - Dance - Dramatics

THERE are certain individuals who are prominent in different activities on the campus. One of these is Harold Palmer, who is the director of the William Picken Training School band. Another individual prominent because of her musical ability is Ida Marie Wickizer. Ida Marie sang the part of Lucia in the opera "*Lucia di Lammermoor*" which was given on April twenty-fifth of this year.

We have few opportunities to observe the dramatic ability which we may have within our group of students. We wish, however, to congratulate Orvis Grout upon his splendid performance in "*The Valiant*." That performance showed that he has the ability of a real actor.

We have often been entertained in assemblies this year by programs given by the girls from the dancing classes. We commend in particular the dances by Mildred Schlyer and Maurine Faulkner, and those by Mildred Schlyer and Helen Fritts.



HAROLD PALMER—*music*
MILDRED SCHLYER, MAURINE FAULKNER—*dance*
MILDRED SCHLYER, HELEN FRITTS—*dance*
ORVIS GROUT—*dramatics*
IDA MARIE WICKIZER—*music*



K. S. C. Fort Hays Concert Band

FREDERICK E. GREEN
Director

ELTON WILLIAMS
Drum Major

Cornets

MELVIN BRADY
WAYNE RUPPENTHAL
MARLYN KINGSLEY
JACK VINCENT
JAMES WICKIZER
ROYER BARCLAY
MERRILL WHEATCROFT
CHARLES PARKER
GORDON CHRISTENSEN
ERMA GARTON

Altos

ELMER SCHLEGEL
NOEL GANOUNG
BEE GARTON
EDWARD CASWELL

Trombones

HAROLD PALMER
EUGENE ERBENTRAUT
LESLIE NASH
BENNIE HUNT
HOWARD LAMOREUX
BERNARD EHRLICH

Percussion

DOROTHY BUNT
ELTON WILLIAMS
DAVE MARKEL
DALE HOBBS
DONALD SCHOENFELDT
GEORGE SCOTT

Saxophones

MARJORIE PERFECT
MAX BLAKELY
BERTHA RUSSELL
LEE RAYMOND
ISABEL BARKER
ANNA SANDICK
EDWARD SERPAN

Clarinets

L. J. YURCHAK
NADYNE CALVERT
HORACE BUTLER
ERNEST HOKE
VYRL LEVAN
KIRK RAYNESFORD
ETHEL MILLER

BERNARD RIEDEL
JACK McDOWELL
ELDORA ASHCRAFT
ALBERTA ROUNER
VERLE CUDNEY
DOLORES ALLPHIN
LETHA COLBURN

Baritones

ROY CUDNEY
WINSTON BROWN
WALLACE BAKER

Basses

BERNARD BRUNGARDT
OTT WEIGEL
IRVEN CORDER
LOWELL RUNYAN
VICTOR MILLER

Piccolos and Flutes

VIVIAN GREEN
PATRICIA START
BLANCHE COMBEST

K. S. C. Orchestra

H. E. MALLOY, *Director*

First Violins

MRS. CLARA MALLOY
FATHER ALFRED CARNEY
JUANITA WILLIAMS
CRYSTAL YOUNG
MARGARET MAYFIELD
BESSELEE LOWERY
BONNIE ZIMMERMAN
KATHLEEN NORTHUP

Second Violins

LUCILLE FELTEN
ADRIAN SHERER
WILLIAM FRIEND
HELEN SMART
BERYL GARDNER
HAZEL SIELING
HELLEN RAWSON
OPAL HUXMAN

Violas

OTT WEIGEL
BERNARD BRUNGARDT
MARY E. ENFIELD

Cellos

ROBERT GANTNER
ALLAN RANKIN
MARY LOUISE WALKER

Basses

ELEANOR WINTERS
LETHA ABELL

Flutes

VIVIAN GREEN
ERNESTINE FIELDS
MARCUS HAHN

Oboes

IDA MARIE WICKIZER
NADYNE CALVERT
STELLA SCHLEGEL

Clarinets

VYRL LEVAN
FREDERICK GREEN

Horns

ELMER SCHLEGEL
LAWRENCE RARICK

Trombones

HAROLD PALMER
BENNIE HUNT

Trumpets

WAYNE RUPPENTHAL
MELVIN BRADY

Percussion

DAVID MARKEL

Piano

HELEN BUTLER





Girls' Glee Club

H. E. MALLOY, *Director*

MEMBERS

Letha Abell, Ruby Aldrich, Maxine Beckhelm, Helen Frances Bice, Helen Butler, Faye Corwin, Verle Cudney, Kathlyn Dennis, Effie Denison, Elizabeth Early, Mary Elizabeth Enfield, Beryl Gardner, Miriam Gonzales, Blanche Hoagland, Elsie Jones, Wilda Claire McReynolds, Wilma Montgomery, Grace Olson, Kathryn Parsons, Annabelle Reinhold, Maurine Shimmick, Hazel Sieling, Avelle Spangler, Alice Start, Mary Louise Walker, Ida Marie Wickizer, Juanita Williams, Eleanor Winters, Freda Winters, Martha Wright.

NADYNE CALVERT, *Accompanist*



Men's Glee Club

HOBART DAVIS, *Director*

MEMBERS

John Allen, Bert Bingaman, John Brock, Winston Brown, Dean Caswell, Ammon Childs, Homer Courtney, Harry Davis, Fay Douglass, Walter Dunlap, Burdette Fallis, Joseph Fisher, Keith Forney, William Friend, Fred Georg, Orvis Grout, Vyrl Levan, William Malcolm, Donald Maxwell, Chester Meyer, Wendall Montgomery, Leslie Nash, Merritt Owens, Lewis Pankaskie, Kirk Raynesford, Corbin Robinson, Guy Ruggles, Lowell Runyan, Kermit Sanders, Ernest Scheer, Donald Schoenfeldt, Edwin Schulte, Elmer Spomer, Ervin Stever, Earl Stum, Rex Thompson, Lowell Trull, Merrill Wheatcroft.

DALE HOBBS, *Accompanist*

On the Stage

THE Christmas Pageant, "The Other Half," by Charlotte Remick, was presented in Student Assembly on December twenty-first.

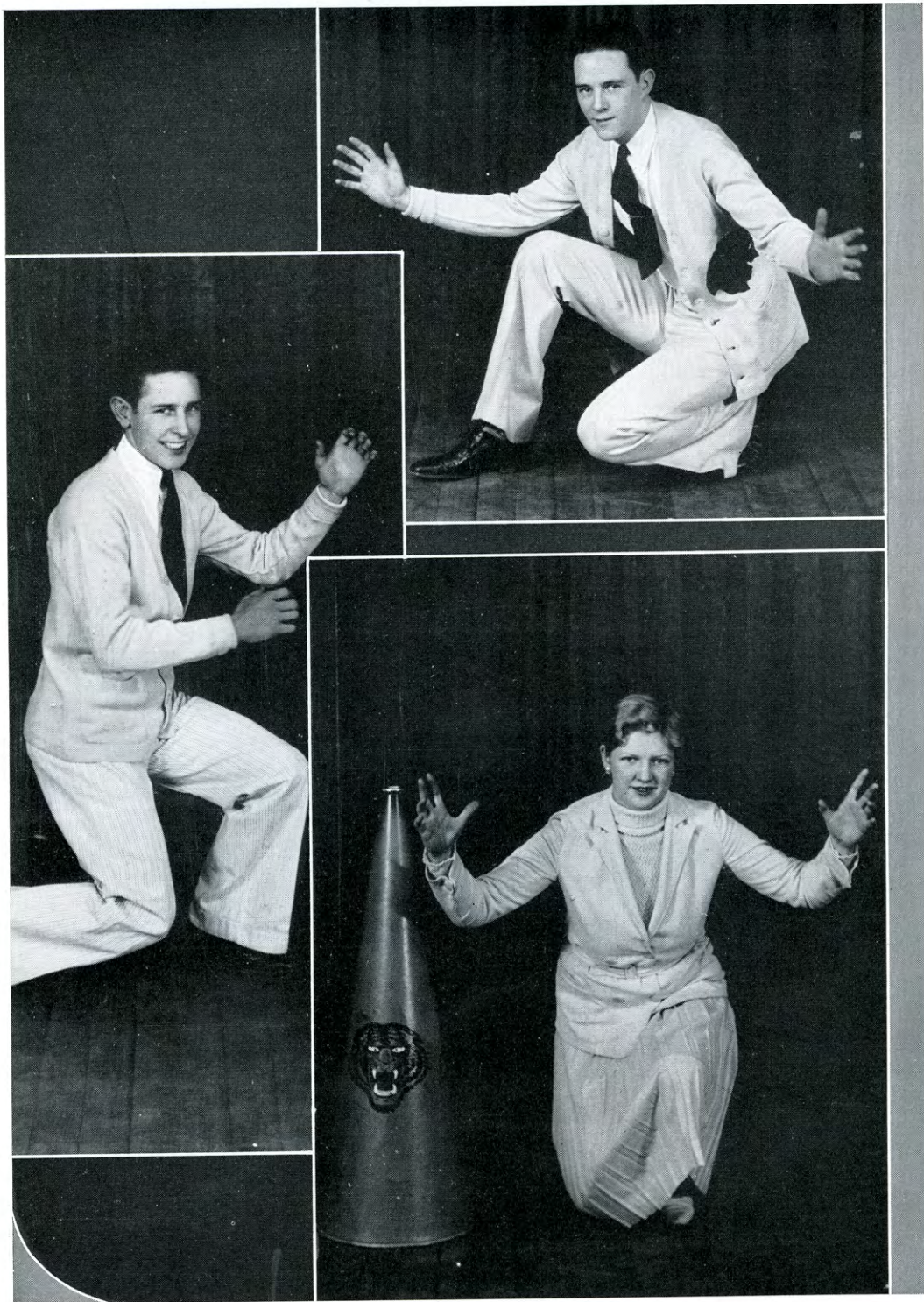
The Pageant represented a street scene before a church during a vesper service on Christmas Eve. The spirit of Christmas had flooded the church with light and as the people of the world passed by, they, too, caught the atmosphere from the light and song radiated from the

shrine. Reverently they entered to join in the singing and to feel again the spirit of that Holy Night.

The Pageant was very ably directed by Katherine Rhoades. The success of the Pageant was due, in a large measure, to the co-operation of the people working with Miss Rhoades.

It is hoped that the Pageant may be made an annual affair.





DEPARTMENTAL

IMPRESSIONS

GOING to college could be a deadly routine if it meant just spending so many hours in so many buildings each day, but it means more than that. We absorb the traditions of the school and acquire a certain pride in its activities. Because of that pride, we follow with interest the participation of our school in inter-collegiate activities. We feel a personal glory if our school turns out a winning basket ball or football team. We often forget that

our teams are largely what the students back of them make them; that by our whole-hearted support we can encourage those teams to greater effort and achievement. To lead the student body in that support the Pep Club was organized. Its aim is the promotion of spirit and enthusiasm at all college contests. Membership is open to all those students interested in the activities of such an organization.



Top row—BERGIN, GIEBLER, TICHENOR, C. NICHOLAS, RANDALL, DANNEFER, BUTLER, HUPFER, HERBERT, FAULKNER, DENMAN, MCFARLAND, GILLETTE.
Second row—WRIGHT, BROADIE, BOND, ENFIELD, WENGER, BICE, MCCOY, STONEBRAKER, TWENTER, PARSONS, WYLIE, STRADAL.

The Power of the Press



WALTER
WALLERSTEDT

THE print shop plays a powerful part in the affairs of the college. It is here that much of the publicity that goes out to the high schools of the state, is printed; it is here the *Aerend* is printed; and it is here that the *Leader* takes its final form. Walter Wallerstedt is the very capable "boss" of the department, and is assisted by Ralph McGimsey.

As Mr. Wallerstedt so kindly helped all *Leader* staffs, he helped the Press Club in putting out the Commencement issue of the *Leader*. The Press Club is a group of students majoring or minoring in Journalism who write for the college publications.

The Officers of Press Club:

FALL SEMESTER

FREDERIC HEMPHILL . . .	President
LODEMA YOUNG . . .	Vice-President
KATHRYN OFFERLE . . .	Sec.-Treasurer

SPRING SEMESTER

ELEANOR WINTERS . . .	President
ALICE START . . .	Vice-President
KATHRYN OFFERLE . . .	Sec.-Treasurer
EARL E. STRIMPLE . . .	Faculty Sponsor

Members of the Club are: Shirley Baird, Jack McDowell, Charles Wilcox, Helen Dannefer, Lodema Young, Wayne Maxwell, Howard Dean, Barbara Robinson, Charles Northrop, Louise Twenter, Kathryn Offerle, Norman Lietzke, Edith Palmer, Bill Haffamier, Norman Noble, Alice Start, Virgil Basgall, Eleanor Winters, Scotty Philip, Katherine Rhoades.



The Printing Department



THE REVEILLE

STATE COLLEGE LEADER

AEREND

Campus Publications

OF the three campus publications, two only are edited by students.

The Reveille, the yearbook, is the annual publication of the Junior class and presents a volume that exemplifies the character of the student body and reflects the atmosphere of the school as it is day by day.

The Leader is the weekly student newspaper edited through the Department of Journalism. It is a student publication which aims to present a weekly picture of the

campus life. It strives for the betterment of student activities and the promotion of good will, and is the medium through which alumni may keep in touch with the college.

The Aerend, a literary magazine published quarterly, was founded by a group of faculty members and students in the autumn of 1929. It is composed of prose and poetry written by students and faculty members, to which all students are invited to contribute. It is published by *The Quill Club*, and is edited by Dr. R. R. Macgregor.



THE *Reveille* is published by the junior class although some members of the staff are sophomores who must shoulder the responsibility of the following year's book.

THE STAFF

Editor SHIRLEY BAIRD
Business Manager NORMAN LEITZKE
Assistant Editor BETH HARKNESS
Assistant Business Manager DOROTHY BUNT
Organizations Editor ELEANOR WINTERS
Features VESTER DAVIDSON
Women's Sports HELEN DANNEFER
Men's Sports HOWARD DEAN

State College Leader

THE Leader is a student publication presenting a picture of the campus life. It strives for the betterment of student activities and the promotion of good will and is a medium through which alumni may keep in touch with the college.

On March 8, 1933, the Leader celebrated its twenty-sixth birthday and a special commemorative edition was printed.

THE STAFF

Editor EDITH HUNSLEY PALMER
Business Manager HENRY BUCK
Sports Editor VIRGIL BASGALL
Feature Editor HELEN DANNEFER
Society Editor ALICE START
Organization Editor JACK McDOWELL
Alumni Editor LODEMA YOUNG
General News ELEANOR WINTERS

Reporters

DALE LINDSAY, WAYNE MAXWELL,
 CHARLES WILCOX, KAY OFFERLE,
 ANN CHRISTENSEN

The Art Lovers' Club

THE *Art Lovers' Club* is an organization for students majoring in art. The programs are built around serious studies in art appreciation, and give lovers of art an opportunity to study different forms and branches of art.



OFFICERS

ANNETTE SCROGGS	<i>President</i>
ORAL McMICHAEL	<i>Vice-President</i>
BERNICE VAN PELT	<i>Secretary-Treasurer</i>
MISS LEONA WELLES	<i>Faculty Sponsor</i>

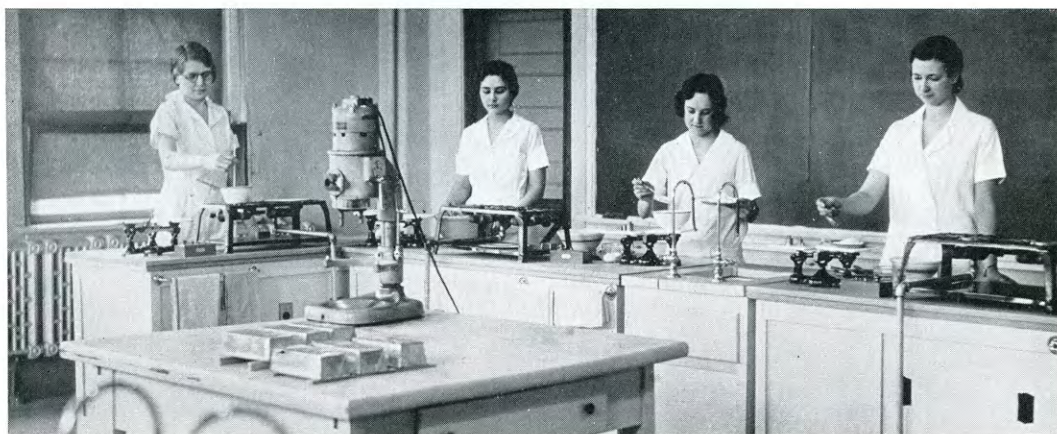
The English Club

THE *English Club* is a society for English students. The programs include a study of the various forms of literature and different authors. Membership is open to all who are interested in reviewing current literature or in original creative writing. This year there are seventy members including students, faculty and interested town people.

OFFICERS

LINDA WEST	<i>President</i>
REBECCA WELLS TAYLOR	<i>Vice-President</i>
BETTY BOND	<i>Secretary-Treasurer</i>
R. R. MACGREGOR	<i>Faculty Sponsor</i>

Home Economics Department



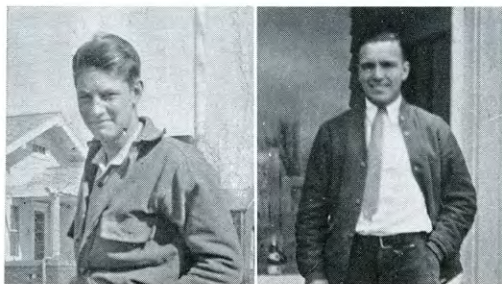
THE *Home Economics Club* was organized in 1925 and is an organization for those women interested in home economics. Membership in the *Home Economics Club* for activity credit is limited to students majoring or minoring in some phase of home economics, or enrolled in a home economics course at the time of membership.

OFFICERS

ANNABELLE DICKINSON	<i>President</i>
MILDRED KINGSLEY	<i>Vice-President</i>
VENA MAE DAVIDSON	<i>Secretary-Treasurer</i>
JANICE LYONS	<i>Reporter</i>
MISS MARGARET HAGGART	<i>Faculty Sponsor</i>

Professional Club

Professional Club is an organization in the College to promote the interest of those who are taking professional and non-professional training.



OFFICERS

First Semester

EDGAR KING	<i>President</i>
ELIZABETH EPPSTEIN	<i>Secretary</i>

Second Semester

PAUL KING	<i>President</i>
BLANCHE STEVENSON	<i>Secretary</i>
FLOYD B. LEE	<i>Faculty Sponsor</i>

Social Science Club

The *Social Science Club* is an organization for those students interested in studying the historical, social, economic, and political problems of the day.

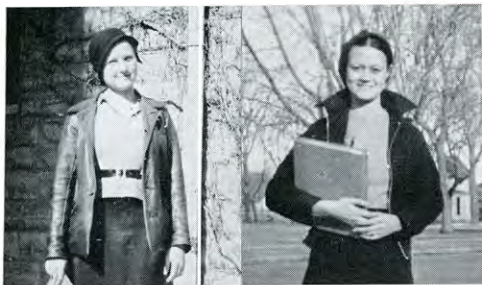
OFFICERS

First Semester

Second Semester

CHARLES WILCOX	<i>President</i>
WARREN MACY	<i>Vice-President</i>
BOB JENNISON	<i>Secretary-Treasurer</i>

Commercial Club



DEAN WIRUTH

ELIZABETH EPPSTEIN

THE *Commercial Club* is a student organization for those particularly interested in commerce. Its members receive an activity credit for each semester they are members. All students taking commercial courses are expected to enroll for this activity. The object of the Club is to develop leadership.

Through the courtesy of the *Hays Chamber of Commerce*, each member of the *Commercial Club* is automatically an associate member of that organization.

This arrangement gives the student an opportunity to get additional ideas on community leadership.

OFFICERS

First Semester

ELIZABETH EPPSTEIN	President
CARL BOXBERGER	Vice-President
DEAN WIRUTH	Secretary-Treasurer

Second Semester

DEAN WIRUTH	President
LUELLA MOLLENKAMP	Vice-President
EFFIE ASHWORTH	Sec.-Treasurer
E. R. MCCARTNEY	Faculty Sponsor

The Science Club

THE *Science Club* was organized for the purpose of giving students who are scientifically inclined an opportunity to participate in activities of kinds not likely to be experienced in science classes. Membership in the *Science Club* for activity credit was limited to students either majoring or minoring in some phase of science, or enrolled in a science course at the time of membership. The value of the Club to any student was proportional to his participation in its activities.

OFFICERS

RAYMOND DARLAND	President
HERMAN SEARCH	Vice-President
LEO BROWN	Secretary-Treasurer

The second semester the *Science Club* was reorganized into two smaller groups. One, the *Biological Science Seminar*, is sponsored by Professor Wooster and Dr. Barton. The other, the *Engineers' Club*, is sponsored by Dr. Warnock.

Y. M. C. A.



The *Young Men's Christian Association*, a student movement of world-wide organization, endeavors to live life at its finest. Any young man who will try to live up to the best that life has to offer is welcome to membership. The Y. M. C. A., in co-operation with the Y. W. C. A., sponsors the Religious Week program on our campus each year.

OFFICERS

First Semester

VYRL LEVAN	President
ERNEST HOOPES	Vice-President
LEROY STANDLEY	Secretary-Treasurer

Second Semester

LESLIE NASH	President
HENRY BAKER	Vice-President
BERNARD EHRLICH	Secretary-Treasurer
DR. WILLIS H. WALKER	Faculty Sponsor

Y. W. C. A.

The *Young Women's Christian Association* has a threefold aim:

1. To unite in the desire to realize full and creative life through a growing knowledge of God.
2. To determine to have a part in making this life possible for all people.
3. In this task to seek to understand Jesus and to follow Him.

THE CABINET

ESTHER LANNING	President
VIRGINIA MAXWELL	Vice-President
ISABEL BARKER	Secretary
BEE GARTON	Treasurer
KATHRYN OFFERLE	Finance Chairman
ERMA GARTON	Membership Chairman
MARY MCCLELLAN	Devotional Chairman
LOREA PORTER	Social Service Chairman
RACHEL BARTHOLOMEW	Big Sister Chairman
AVANELLE SPANGLER	Music Chairman
LUCILLE TICHENOR	Social Chairman
MARY REYNOLDS	Publicity
BLANCHE KINCAID	Freshman Y. W. President
MISS MAUDE GORHAM	Faculty
MISS MARGARET DRESHER	Sponsors



Forensics

DEBATE and oratory is a course for students who wish to qualify for participation in intercollegiate contests.

This college is a member of the *Kansas Debate Association* and has a chapter of *Pi Kappa Delta*, a national forensic fraternity.

This year the members of the debate squads are: Edgar King, Logan; Vester Davidson, Hays; Vernon Clover, Hays; Charles Wilcox, Salina; Elizabeth Eppstein, Great Bend; Winifred McCoy, St. John; Yuba Hunsley, Larned; Maurine Faulkner, Great Bend.

December 2 and 3, the Fort Hays boys' team, King and Davidson, won second place in the largest college pre-season debate tourney in the United States, held at Winfield, in which there were fifty-three

colleges from seven states represented. King and Davidson ranked in the upper one-third in the two major senior college tournaments, and in the junior college tournament they won every debate in which they participated.

At the Kansas Province tournament, held at Emporia, March 30-31 and April 1, in which there were twenty-one men's teams and fifteen women's teams entered, the Fort Hays boys' team won the first four rounds and lost in the fifth round to Wichita University. The Fort Hays girls' team won two debates and lost in the fifth round to Wesleyan University. Charles Wilcox was an extempore speaking entry at the Emporia forensic meet.

Professor James R. Start is the debate coach.



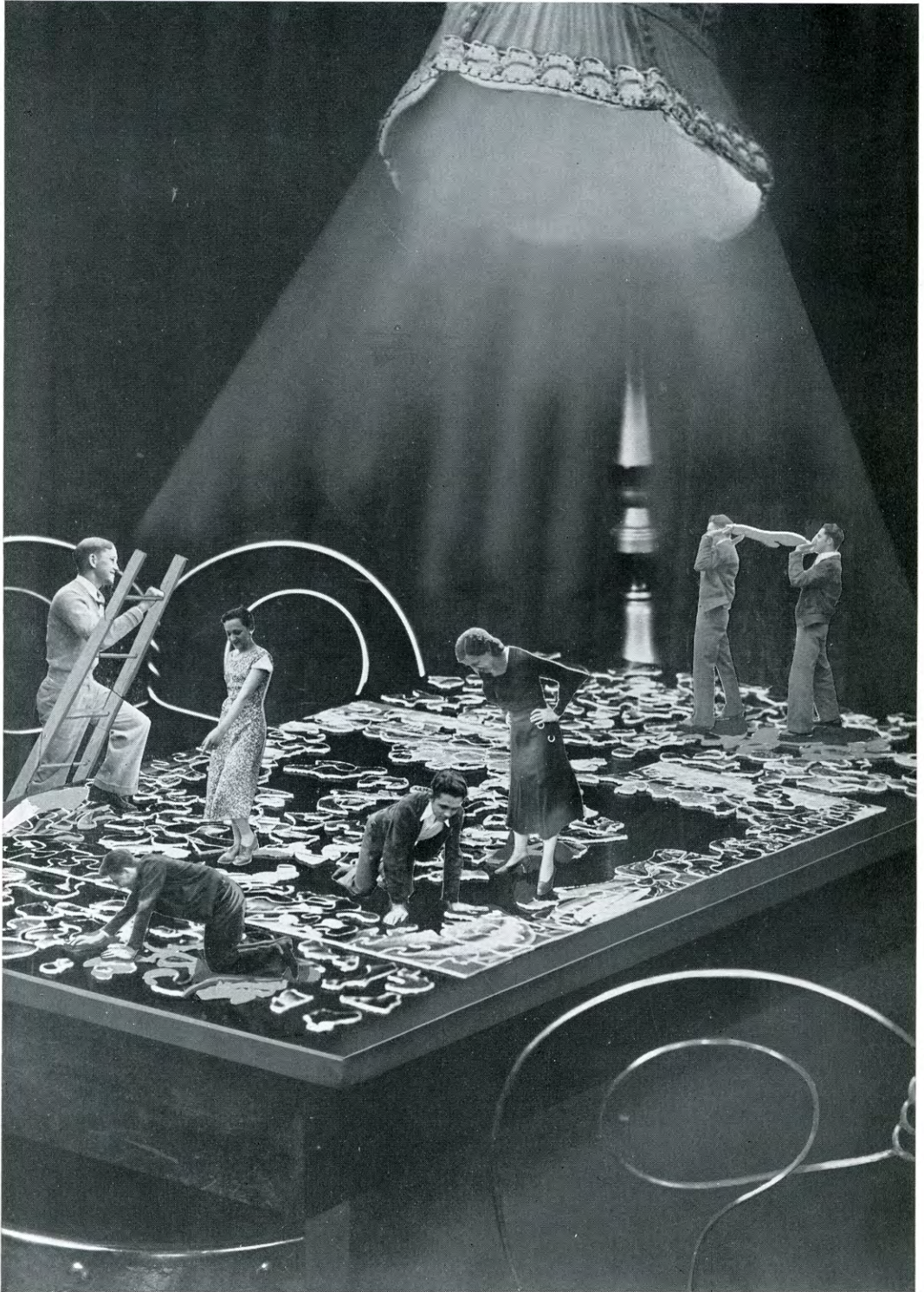
WINIFRED MCCOY
ELIZABETH EPPSTEIN



JAMES R. START
Coach



EDGAR KING
VESTER DAVIDSON



Pan-Hellenic

PAN-HELLENIC is a group whose function is to regulate relations between Greek letter social sororities in regard to rushing, to discuss questions which concern all the groups in general, and to arbitrate and pass judgment when some question of policy is involved.

Membership is made up of two representatives from each sorority and their faculty advisor and the Dean of Women. Monthly meetings are held to discuss routine problems.

Representatives for the college year 1932-33 are: Alpha Sigma Alpha, Miss May Paul, Shirley Baird, Eleanor Winters; Delta Sigma Epsilon, Alice Bartell, Vena Mae Davidson; Pi Kappa Sigma, Miss

Mary Williams, Elizabeth Hibbs, Yuba Hunsley; Sigma Alpha Iota, Miss Maude Gorham, Wilda Claire McReynolds, Ernestine Fields; Sigma Sigma Sigma, Mrs. Pearl Cruise, Helen Butler, Hazel Sieling; Theta Sigma Upsilon, Miss Rosella McCarroll, Pauline Bergin, Katherine Rhoades.

In the fall *Pan-Hellenic* entertained with a Pan-Hellenic Tea which formally opened Rush Week.

Each year the organization sponsors a social function, a Pan-Hellenic formal, which is one of the largest social affairs of the year. This year it was given at the Woman's Building, just before the Christmas holidays.



BAIRD
RHOADES

WINTERS
HIBBS

BARTELL
HUNSLEY

DAVIDSON
BUTLER

BERGIN
MCREYNOLDS

Rush Week

RUSH WEEK—wide-eyed open-mouthed freshmen—curled and ruffled to the utmost—actives weary from worrying and planning weeks before — returning alumnae with their “lines” at topnotch—then panhellenic tea — girls — girls — girls —some timid—some nervous—happy-laughing-excited girls—dean agnew — patronesses — advisors — all brimful of the spirit of the rush week ahead of them—then the rush parties—three each day—and each an event which the dear innocent (?) rushees will never forget —such kindnesses—such courtesies —seemingly a glance at the things the wide eyes had always hoped to see and experience—a variety of entertainment—thrilling speak-easies—fascinating cabarets—courageous pirates—a huge carnival with balloons 'n animals 'n all—a progressive dinner (probably especially to show off the patronesses' homes)—a colonial bridge party

(at the mayor's home)—and a mother goose party (well, that makes a good story)—the six sororities in their glory—actives talking — smiling — boasting of what they had done and what they intended to accomplish—as well as offering assistance—and attempting to be their very kindest in this democratic (?) college—yes—it was an eventful week for the rushees and actives and at the close of it all—following a none-too-silent silence period—the six sororities announced thirty new pledges—the alphas led with eleven and the tri sigs followed with eight—rush week—originating more thrills and young heart throbs—memories of friendships—the dining—and dancing—and teas—and finally the last perfect touch added to an eventful week—bright-eyed rushees pledging their loyalty to their chosen sorority—the end of—RUSH WEEK.





BAIRD	CASEY	DAGUE	DENISON
DENMAN	EPPSTEIN	FISHER	B. HARKNESS
M. HARKNESS	HUPFER	KALBFLEISCH	A. MILLER
E. MILLER	MOLLENKAMP	B. PARSONS	K. PARSONS
E. WINTERS	F. WINTERS	WIRUTH	

Alpha Sigma Alpha

Founded at Virginia State Teachers College, 1901.

Tau Tau chartered March 17, 1928.

Colors: Pearl White and Crimson;
Palm Green and Gold.

Flowers: Aster and Narcissus.

Publication: The Phoenix.

MEMBERS

SHIRLEY BAIRD, *Almena*
 EFFIE DENISON, *Hoxie*
 FREDa DENMAN, *Prairie View*
 ELIZABETH EPPSTEIN, *Great Bend*
 ESTHER FISHER, *Glen Elder*
 BETH HARKNESS, *Hays*
 STELLA HUPFER, *Bunker Hill*
 ALTA MILLER, *Nekoma*
 ETHEL MILLER, *Nekoma*
 LUELLA MOLLENKAMP, *Arnold*
 DOROTHY MORRISON, *Hays*
 KATHRYN PARSONS, *Hays*
 ELEANOR WINTERS, *Hays*
 FREDa WINTERS, *Hays*

PLEDGES

FLORENCE CASEY, *Zurich*
 VIRGINIA DAGUE, *Hays*
 MARJORIE HARKNESS, *Hays*
 VIRGIE KALBFLEISCH, *Harlan*
 LELA PITTS, *Mullinville*
 BERTHA PARSONS, *Hays*
 BERTHA WASHICHEK, *Almena*
 DEAN WIRUTH, *Almena*

IN FACULTATE

MISS MARY MAY PAUL



Delta Sigma Epsilon

Founded at Miami University,
Oxford, Ohio.

Rho chapter installed Oct. 2, 1925.

Colors: Olive Green and Cream.

Flower: Cream Tea Rose.

Publication: The Shield.

MEMBERS

ALICE BARTELL, *Ellis*
DOROTHY BUNT, *Clafin*
VENA MAE DAVIDSON, *Hays*
MAURINE FAULKNER, *Great Bend*
MRS. BERNIECE GROUT, *Hays*
OPAL HERBERT, *Ellis*
VIVIAN INLOW, *Hays*
EFFIE MAE MCWILLIAMS, *Quinter*
BARBARA ROBINSON, *LaCrosse*
BERTHA RUSSELL, *LaCrosse*
ANNETTE SCROGGS, *Ellis*
ELLEN STRADAL, *Hays*
NORMA STRADAL, *Hays*
LOUISE TWENTER, *Hays*
LODEMA YOUNG, *Hill City*

PLEDGES

MAXINE BECKHELM, *Kankakee, Ill.*
ELAINE BITTER, *LaCrosse*
VERONICA BOND, *Manhattan*
ETHEL MARTIN, *Oberlin*
WINIFRED MCCOY, *St. John*
ROSEMARY ROBERTS, *Benedict*
MARTHA WYLIE, *Quinter*



BARTELL	BOND	BITTER	BUNT
DAVIDSON	FAULKNER	GROUT	INLOW
HERBERT	KELSEY	MCCOY	MCWILLIAMS
ROBERTS	ROBINSON	RUSSELL	SCROGGS
	N. STRADAL	TWENTER	WYLIE



CLINE
HUNSLEY
ROE
YOUNG

HIBBS
LYONS
ROYSE

Pi Kappa Sigma

Established Hays, 1930.

Colors: Turquoise and Gold.

Flowers: Yellow Jonquils and Forget-me-nots.

MEMBERS

ALTA CLINE, *Oakley*

ELIZABETH HIBBS, *Stafford*

YUBA HUNSLEY, *Larned*

JANICE LYONS, *Ford*

WINIFRED ROE, *Russell*

AUDRA ROYSE, *Langdon*

MARGARET SMITH, *Great Bend*

PLEDGES

VIRGINIA MCFARLAND, *Hays*

FAYE YOUNG, *Bloom*

IN FACULTATE

MISS MARY WILLIAMS



Sigma Alpha Iota

National Honorary Music Fraternity
for Women.

Established Fort Hays, 1931.

Colors: Red and White.

MEMBERS

DOROTHY BUNT, *Claflin*
HELEN BUTLER, *Winona*
HELEN DRAKE, *Rozell*
LUCILLE FELTEN, *Hays*
ERNE TINE FIELDS, *Hays*
BERYL GARDNER, *Great Bend*
OPAL HUXMANN, *Arnold*
MRS. CLARA MALLOY, *Hays*
WILDA C. McREYNOLDS, *Montezuma*
KATHLEEN NORTHUP, *Wakeeney*
GRACE OLSON, *Alexander*
MRS. C. U. PHILLIPS, *Hays*
MARY REYNOLDS, *Grainfield*
ELDRED SHAW, *Hays*
MAURINE SHIMMICK, *Jennings*
HELEN SMART, *Stafford*
MRS. FLORENCE WALLACE, *Hays*
IDA MARIE WICKIZER, *Hays*
JUANITA WILLIAMS, *Hays*
MARTHA WRIGHT, *Kinsley*

PLEDGES

KATHLYN DENNIS, *Woodston*
PHYLLIS HANLEY, *Norton*
WILMA MONTGOMERY, *St. Francis*
MARJORIE PERFECT, *Jewell City*

IN FACULTATE

MISS MAUDE GORHAM



BUNT	BUTLER	DENNIS
GARDNER	HUXMANN	McREYNOLDS
MONTGOMERY	NORTHUP	SHIMMICK
OLSON	REYNOLDS	WRIGHT
SMART	WICKIZER	



ANGELL
CHRISTENSEN
HAVEMANN
MONTGOMERY

BRYANT
HUBBELL
ENFIELD
WENGER

BUTLER
GILLETTE
KRAUSE
LIVINGSTON
WILLIAMS

Sigma Sigma Sigma

Founded Virginia State Teachers
College, 1898.

Established Fort Hays, December,
1925.

Colors: Royal Purple and White.

Flower: Purple Violet.

Publication: The Triangle.

MEMBERS

ANN ANGELL, *Portis*
MARCILE BROADIE, *Ashland*
HELEN BUTLER, *Winona*
ANN CHRISTENSEN, *Menlo*
MARY ELIZABETH ENFIELD, *Hays*
EMMA LOUISE HAVEMANN, *Hays*
RUTHETTA KRAUSE, *LaCrosse*
RUTH LIVINGSTON, *Menlo*
WILMA MONTGOMERY, *St. Francis*
HAZEL SEILING, *Hays*
ESTHER WILLIAMS, *Winona*

PLEDGES

SALLY BRYANT, *Cimarron*
BERNICE GILLETTE, *Oberlin*
HARRIET HARRISON, *St. Francis*
MARY LAWRENCE, *Wichita*
IRENE RANDALL, *Ashland*
ANNABELLE REINHOLD, *St. Francis*
OPAL WENGER, *Selden*

IN FACULTATE

MRS. PEARL G. CRUISE



Theta Sigma Upsilon

Founded Emporia Teachers
College, 1920.

Established Fort Hays, 1929.

Colors: Rose and Silver.

Flower: Rose.

MEMBERS

ALBINA BASGALL, *Hays*
PAULINE BERGIN, *Bogue*
BETTY BOND, *Arlington*
JULIA COLAHAN, *Hays*
KATHLEEN DENNIS, *Woodston*
ERNESTINE FIELDS, *Hays*
HELEN FRITTS, *Hays*
JOSEPHINE GRUNDMEIER, *Gorham*
MARIETTA JACOBS, *Hays*
MARGARET NICHOLAS, *Hays*
EDITH HUNSLEY PALMER, *Larned*
KATHERINE RHOADES, *Hays*
MILDRED SCHLYER, *Hays*
MANDY LOU SPANIOL, *Dodge City*
MARIAN SKAGGS, *Salina*
ALICE START, *Hays*
GENEVIEVE STULL, *Palco*

PLEDGES

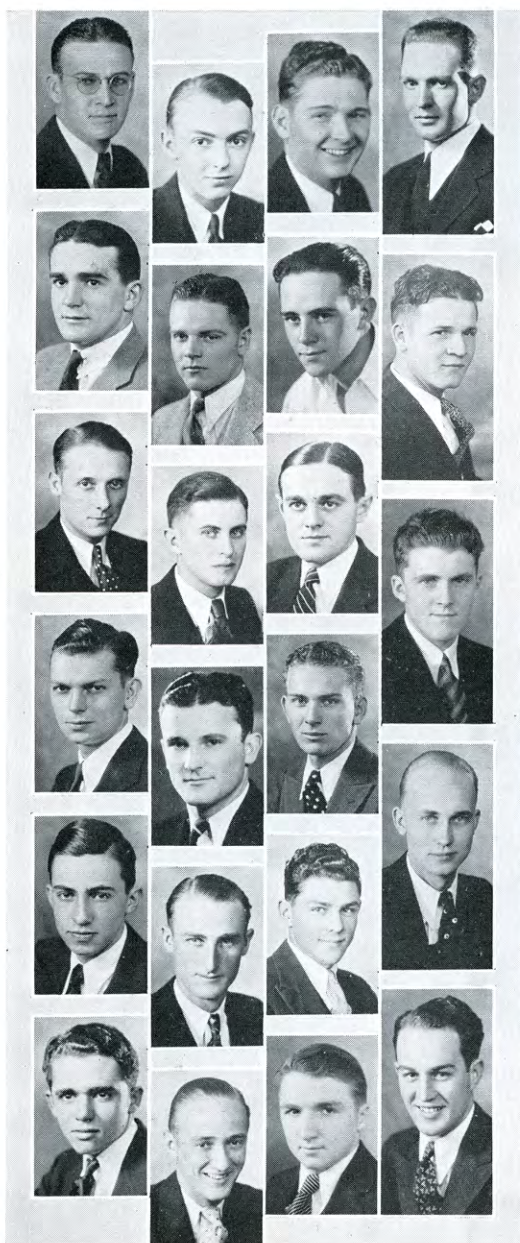
HELEN BRADLEY, *Larned*
HENRIETTA GIEBLER, *Hays*
MAURINE HUNSLEY, *Larned*
ELSIE JONES, *Kanorado*
LORETTA NICHOLAS, *Hays*

IN FACULTATE

MISS ROSELLA MCCARROLL



BASGALL	BERGIN	BOND	COLAHAN
DENNIS	FRITTS	GRUNDMEIER	GIEBLER
PALMER	HUNSLEY	JACOBS	JONES
LOFSTEAD	L. NICHOLAS	M. NICHOLAS	RHOADES
START	SCHLYER	SKAGGS	STULL



BINGAMAN	CASWELL	CHILDS	COX
CUDNEY	DARLAND	FRIEND	GEORGE
HOBBS	KINGSLEY	LEVAN	MALCOLM
MAXWELL	MEULI	PALMER	
RHOADES	SCHULTE	SCHWARTZKOPF	RAYNESFORD
STEVER	TRULL	WICKIZER	WILLIAMS

Phi Mu Alpha

Established New England Conservatory, 1898.

Alpha Phi Established at Hays, May 10, 1926.

Colors: Red, Black, and Gold.

Publication: Sinfonian.

MEMBERS

PAUL BECKHELM, *Hays*
 BERT BINGAMAN, *Oakley*
 DEAN CASWELL, *Phillipsburg*
 AMMON CHILDS, *Rexford*
 GORDON CHRISTENSEN, *Menlo*
 RAYMOND DARLAND, *Codell*
 HOBART DAVIS, *Hays*
 KEITH FORNEY, *LaCrosse*
 FRED GEORG, *Alexander*
 DALE HOBBS, *Phillipsburg*
 MARLYN KINGSLEY, *Ellis*
 HOWARD LAMOREUX, *Oakley*
 VYRL LEVAN, *Ness City*
 WILLIAM MARKWELL, *Hays*
 WILLIAM MALCOLM, *Almena*
 HENRY EDWARD MALLOY, *Hays*
 DONALD MAXWELL, *Menlo*
 EARL MEULI, *Elmo*
 HAROLD PALMER, *Hays*
 KIRK RAYNESFORD, *Ellis*
 JAMES WICKIZER, *Hays*
 LOREN WELLMAN, *Abilene*
 ELTON WILLIAMS, *Ness City*
 OTT WEIGEL, *Hays*

PLEDGES

WINSTON BROWN, *Larned*
 EARL COX, *Leoti*
 ROY CUDNEY, *Leoti*
 WILLIAM FRIEND, *Quinter*
 BEN RHOADES, *Hays*
 RAY SCHULTE, *Rexford*
 HERMAN SCHWARTZKOPF, *Alexander*
 ERVIN STEVER, *Trousdale*
 REX THOMPSON, *Bogue*
 KENNETH WELLS, *Hays*



Phi Sigma Epsilon

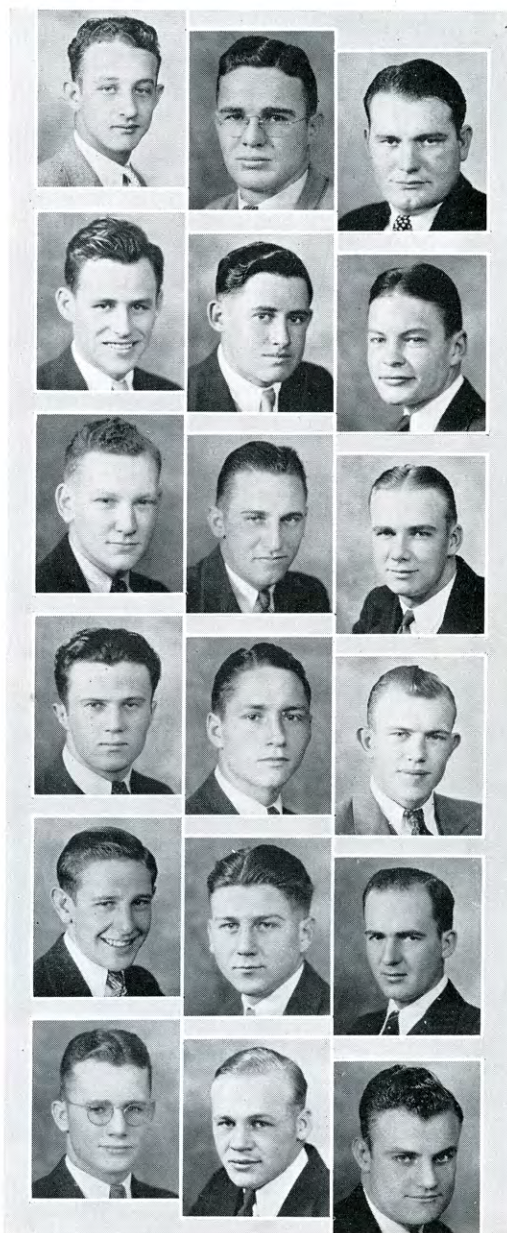
Established Fort Hays, 1930.

MEMBERS

GEORGE BALLS, *Hays*
 VIRGIL BASGALL, *Hays*
 HOWARD DEAN, *Agra*
 GORDON FARR, *Natoma*
 ALEX FRANCIS, *Oberlin*
 ORVIS GROUT, *Hays*
 TINE HARBAUGH, *Bunker Hill*
 ALBERT HAWKES, *Hays*
 THOMAS HINES, *Hoxie*
 FRED HUTTIE, *Russell*
 BERT LANE, *Bazine*
 ARTHUR LIVINGSTON, *Menlo*
 JOHNNY MAYS, *Kanopolis*
 GEORGE MAHONEY, *Bunker Hill*
 WILLIAM MCCONNELL, *Minneola*
 PETE MEULI, *Hope*
 GEORGE MESSIMER, *Bunker Hill*
 WADE MORIARTY, *Augusta*
 RAY MORTON, *Bunker Hill*
 ROBERT MOSIER, *Hoxie*
 EDMUND MULLEN, *Densmore*
 WILLIS NEAL, *Scott City*
 NORMAN NOBLE, *Hays*
 CHARLIE NORTHROP, *Jetmore*
 SYLVESTER PALMER, *Natoma*
 SCOTTY PHILIP, *Hays*
 WIMBERLY PIATT, *Hays*
 HARRY PRATT, *Hoxie*
 HERMAN ROTHE, *Bison*
 DALE SHELLHAAS, *Hays*
 WILLIAM START, *Hays*
 JOHN SAUERWEIN, *Hays*
 RUSSELL SCHMITT, *Fairview*
 FLOYD SEXTON, *Abilene*
 WARD SHULL, *Horton*
 CARL THURLOW, *Hill City*
 JESS WOODRUFF, *Minneapolis*

PLEDGES

JOHNNY BAKER, *Minneapolis*
 WAYNE HAMMOND, *Hays*
 FLORIAN HOLM, *Hays*
 HARRY SCHENKEL, *Bazine*



BAKER	DEAN	FARR
FRANCIS	HINKHOUSE	HOLM
MAHONEY	MEULI	MOSIER
NOBLE	NORTHROP	PALMER
PIATT	PHILIP	PRATT
ROGERS	SHULL	WOODRUFF





BAER	BUCK	BUTLER	DAWSON
DAVIS	DAVIDSON	HEMPHILL	D. HOOVER
R. HOOVER	HUNT	JONES	KAHLER
LIETZKE	MCGRATH	RARICK
STUM	TAYLOR	SCHOENFELDT	
VAUGHAN	WAELDIN	WAMHOFF	WHEATCROFT

Sigma Tau Gamma

Founded Warrensburg, Missouri,
June, 1920.

Eta chapter at Hays, January, 1926.

Colors: Purple and White.

Flower: White Rose.

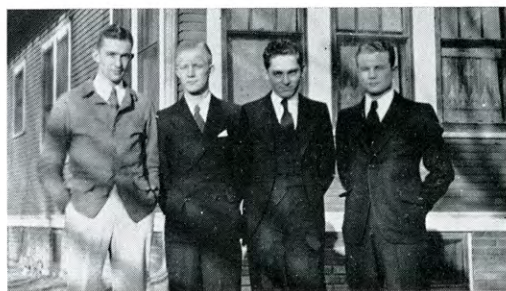
Publication: Saga

MEMBERS

HENRY BUCK, *Belleville*
 HAROLD BUTLER, *Winona*
 VESTER DAVIDSON, *Hays*
 HARRY DAVIS, *St. John*
 ADRIAN DAWSON, *Hoisington*
 FRED HEMPHILL, *Clay Center*
 ERNEST HOOPES, *Lucas*
 DONALD HOOVER, *Macksville*
 ROBERT HOOVER, *Macksville*
 CASEY JONES, *Hill City*
 NORMAN LIETZKE, *Augusta*
 JACK MCDOWELL, *Hays*
 JAMES MCGRATH, *Hays*
 MERWIN MILLER, *Hays*
 LAWRENCE RARICK, *Hays*
 EDWARD SERPAN, *LaCrosse*
 BEVERLY TAYLOR, *Ness City*
 JAMES VAUGHAN, *Greenville, S. C.*
 MERRILL WAMHOFF, *Holyrood*
 MAURICE WAELDIN, *Hoisington*

PLEDGES

MILTON BAER, *Ness City*
 WILBUR HUNT, *Augusta*
 CLARENCE KAHLER, *Holyrood*
 EDGAR KING, *Logan*
 DALE LINDSAY, *Bunkerhill*
 EARL OLSON, *Collyer*
 HARRY REEVES, *Woodston*
 ELLIS REINHARDT, *Bison*
 HOWARD ROYSE, *Langdon*
 KERMIT SANDERS, *Utica*
 DONALD SCHOENFELDT, *Hays*
 DEAN SKAER, *Augusta*
 ELMER SPOMER, *Alexander*
 EARL STUM, *Russell*
 MERRILL WHEATCROFT, *Dighton*



Kappa Beta Tau

Local Social Fraternity
Organized February, 1928

Colors: Black and White.
Flower: White Carnation.

OFFICERS

EDWIN VAN DOREN . . . *President*
CHARLES HEATON . . . *Vice-President*
HERMAN SEARCH . . . *Secretary*
HARRY STRUSS . . . *Treasurer*
WALTER WALLERSTEDT, *Faculty Advisor*

MEMBERS

Virgil Brown, Harold Conrad, Fay Douglass, Charles Heaton, Willard Larson, Wayne Maxwell, Lawrence Myers, Vernon Moreman, Rollin Northern, Merritt Owens, Herman Search, Harry Struss, Edwin Van Doren, Wilbur Weigand, Merwin Wilson.

PLEDGES

John Allen, Edward Bender, George Donecker, Lloyd Grady, Wayne Herzog, Guy Ruggles, Robert Soloman.

Pi Omega Pi

Founded Missouri State Teachers College, Kirksville, Missouri, June 13, 1923.

Established Fort Hays Kansas State College, Lambda chapter, May 17, 1929.

Pi Omega Pi is a national honorary commercial fraternity.

OFFICERS

ELLA MAJOR . . . *President*
RUTHETTA KRAUSE . . . *Vice-President*
LOUIE GARLOW . . . *Secretary-Treasurer*
LEONARD W. THOMPSON, *Faculty Sponsor*

Kappa Omicron Phi

Founded Teachers College, Maryville, Missouri, 1923.

Established Fort Hays Kansas State College, January, 1925.

Colors: Red and Gold.
Flower: Poppy.
Publication: Distaff.

Kappa Omicron Phi is an honorary national home economics sorority.

OFFICERS

ANNABELLE DICKINSON . . . *President*
JANICE LYONS . . . *Treasurer*
FREDA WILSON . . . *Secretary*
MISS MANETTA HEIDMAN, *Faculty Sponsor*

Pi Gamma Mu

Established Fort Hays Kansas State College, 1931.

Pi Gamma Mu is a national social science fraternity. Its purpose is the promotion of the ideals of scholarship, scientific attitude and method, and social service in relation to all social problems.

OFFICERS

RUTHETTA KRAUSE . . . *President*
REBECCA WELLS TAYLOR, *Vice-President*
DR. WALKER . . . *Secretary-Treasurer*
DR. WILLIS H. WALKER, *Faculty Sponsor*

JUDY TO JANE

Jane, dear—

I'm going to write this to you and then duck if I have to go down with the snakes and toads to hibernate.

This term has uncovered a few more great lovers—Bill Haffamier—Bill's own idea of anyone's Adonis, and Luke Lietzke—whom I don't dare to criticize because of untimely results of a few other comments I've made—not to mention Scotty, who loves them and leaves them—or gets left.

And then there was the lad from down east who straggled into Mack's after Homecoming singing, "After the brawl is over." Maybe he was talking about the bugs.

You remember football season, don't you—and all the pepless pep meetings and the icy weather. That was when "Cocky" made his fame—that and the notoriety the Capital furnished him. On the football field or at the breakfast table—he's a hero!

It's interesting to watch some of these romances made—and break. There was Eppstein and Moriarty, Skaer and Stonebraker, Childs and Beckhelm, Winters and Schwartzkopf, and, of course, Bunt and the aforesaid unmentionable who furnished so much material for former columns. Some of these others may not be so exciting after a month or so of listing to Rudy croon, "Absence makes the heart grow fonder," after turning down a date with a good looking such and such from home.

I couldn't stop without mentioning those little parties Dean Lee planned for the freshmen and the ones the upper-classmen actually carried out.

I've gained a title, too, Jane, after nine months of effort. I'm officially catalogued as Public Enemy No. 13 and you'd better watch your step. You've heard, you know, that the pen is mightier than the machine gun.

Dangerously yours,

JUDY

JANE TO JUDY

Dearest Judy—

I hope I'm safely home by the time anyone discovers that this isn't an Ivory soap ad. My association with you may prove a bit trying.

You forgot, darling, to mention that blonde (?) that the Phi Sigs took around the first semester. Anyone who can make a dozen hard-boiled whoozits go positively dippy has earned a place in anyone's gossip column.

How both the Winters rated Phi Mu pins and kept it so quiet is more than I know. In fact the whole problem of Phi Mu pinology is too deep for me.

And then there was the beauty queen who turned up the day her coronation was to be announced, wearing colored glasses—to say nothing of rush week when the Alphas ran off with high honors and left the rest of the Greeks to console themselves with that old standby—"Quality and not quantity."

The whole Pan-Hell group is breathing easier since S A I withdrew—just in time to save the shield for further circulation.

I might get a little personal and mention some of the affairs in which Polly has been entangled during the year but I guess I'll give her a break this time, shall I? I won't even mention her red hair—or his.

One question we'll all take home with us is, "What happened to the basket ball team? and why?" Wee Wee thinks they lack size, while someone else suggested that if a vote were taken of all the conference teams to determine the best one of all, there's no doubt that Hays would carry Hays.

And that's dirt enough to make up for all year. Be a nice child.

Scandalously,

JANE.

EKEY STUDIO

Finest of
PHOTOGRAPHS

135 WEST EIGHTH



HAYS

KANSAS

It's Dress-Up Time at Penney's!

Happy days are here again! Spring's in the air! And—best of all—the new deal you've waited for is here . . . at Penney's! Your big chance has come—to look prosperous, to feel prosperous! Yes, it's dress-up time for every man, woman, and child in town.

Fashion's smiling sweetly at the slim budgets this year. It's true—that impish, expensive-sounding creature has abandoned the high-hat attitude. Everybody's invited to share her favors . . . at the smallest prices in—long, long decades.

Begin today to discard that outworn, out-moded, and tired-looking wardrobe. See what miracles the fewest dollars will perform. Dress up and look out on a new and glorious world. Let your thoughts turn to clothes—and your steps to Penney's . . . where once again

THRIFT SETS THE FASHION!

J. C. PENNEY COMPANY

Geyer Brothers

Druggists

WE ARE ANXIOUS TO SERVE
YOU WITH:

A high-class Prescription Department, always in charge of a Registered Pharmacist; a Toilet Department that is not equalled anywhere in this part of the state for its stock of high - grade perfumeries and toiletries, and a soda and luncheonette department that is unexcelled.

R. C. A. VICTOR RADIOS AND
VICTROLAS AND WESTING-
HOUSE RADIOS AND
FRIGIDARIES

PHONE 53

HOME PHONE 302

George Philip

Dealer in

HARDWARE
CATTARAGUS CUTLERY
CLAUSS SHEARS

EIGHTH AND MAIN

HAYS

KANSAS

To the Class of 1933

We extend our congratulations and best wishes for a joyous, prosperous career.



THE HAYS CITY FLOUR MILLS

Manufacturers of
SEMOLINO FLOUR

HAYS

KANSAS

QUALITY

Diamonds-Jewelry-Watches

In no other line of merchandise is QUALITY so hard to recognize and yet means so much.

Quality merchandise and reasonable prices are assured when you buy from a concern which has proved its integrity over many years of honest merchandising. For thirty-seven years we have maintained a standard of quality in keeping with the thought expressed in our slogan, "The Home of Reliability."

The Tholen Jewelry Company

Established 1895

THIS BANK INVITES YOUR BUSINESS AND ASSURES ITS CUSTOMERS
PERSONAL ATTENTION AND THE VERY BEST OF SERVICE

CAPITAL AND SURPLUS, \$100,000.00

Signifying STRENGTH, SECURITY, EFFICIENT MANAGEMENT

N. F. ARNHOLD	President
JACOB BRULL	Vice-President
V. A. WEIGEL	Vice-President
F. W. ARNOLD	Cashier
NORA L. COLAHAN	Assistant Cashier
N. L. DINGES	Assistant Cashier

The FARMERS STATE BANK

HAYS CITY, KANSAS

"The Bank Where You Feel at Home"

SHINGLES
POSTS
CEMENT
PLASTER
FLUE LINING
WALL BOARD

PLASTER BOARD
ROOFING
CORRUGATED IRON
MOULDINGS
SASH AND DOORS
LIME

BRICK
SEWER TILE
PLYWOOD
INSULATION
METAL LATH
RIDGE ROLL

When Time Means Money Our Service Pays

BUILD—REMODEL—REPAIR

Use Quality Material

L U M B E R — C O A L

Treat-Shaffer & Company

M. HAVEMANN, *Manager*

HAYS, KANSAS

Why Chevrolet is Great

Has built over \$6,000,000,000
worth of cars; all guaranteed
to give economical service and
transportation.

BUY A CHEVROLET SIX
FROM

O'Loughlin
Motor Sales

Chevrolet Sales and Service

G. M. A. C. Terms

HAYS

ELLIS

PHONE 474

PHONE 18

HARKNESS
PHARMACY

DRUGS, BOOKS, KODAKS

A Complete Line
of

TOILET ARTICLES, DRUG
SUNDRIES, CANDIES,
BOOKS, MAGAZINES
and NEWSPAPERS

*Prescriptions Filled by Registered
Pharmacists Only*

PHONE 76

117 W. TENTH ST.

HOTEL LAMER

OFFERING
COFFEE SHOP
DRUGS
BANQUETS

HAYS, KANSAS

PHONE 872

ELITE CAFE

Reasonable Prices for
the College Pocketbook

PROMPT SERVICE
HOME COOKING

We Appreciate Your Patronage

MRS. JOHN SAHLI

Proprietor

WEST 10TH

HAYS, KANSAS

Kream Krust Bread

For

SANDWICHES — TOAST

A Large Display, Fresh Every Day

CAKES, COOKIES, ROLLS, CANDIES

Larzalere Bakery

PHONE 640

HAYS, KANSAS

Basgall's Quality Grocery

GROCERIES, MEATS
and FRUITS

ONLY THE BEST IS OUR MOTTO

The Home of
RICHELIEU PRODUCTS

PHONE 505-75

HAYS, KANSAS

HEALTHFUL FOOD WILL GIVE TO
YOU THAT NECESSARY
HEALTHY BODY

That is why college
students, this year,
more than ever be-
fore have asked for
food from

Grass Brothers
Grocery

GEO. S. GRASS, JR.
E. B. GRASS

PHONE 4

HAYS

The New Ford

V 8



Twenter and Son
Motor Company



Ford Cars and Trucks



HAYS, KANSAS

National Life Insurance Co.

OF THE
UNITED STATES OF AMERICA

Compliments of

JAMES S. BARROW
LESTER KRAUSE
G. H. HOWER
FRANCIS COYLE
MARTIN EASTLACK
C. EDWARD LAW
ARTHUR HEMPHILL

Barrow-Hemphill
Agency

PHONE 110 HAYS, KANSAS

"The Corner Drug Store"

Specialists in

PRESCRIPTIONS, DRUGS
and SODAS

We appreciate the splendid
patronage afforded us by the
students of Kansas State
College and hope that we
might continue to serve their
needs in the future.

HAYS CITY
DRUG STORE

PHONE 348

HAYS

KANSAS

Wiesner's Department Store

A. A. WIESNER

"The Place Where You Feel at Home"

DRY GOODS, CLOTHING, SHOES, LADIES'
READY-TO-WEAR, NOTIONS, TRUNKS *and*
SUITCASES, QUEENSWARE, FLOOR COVER-
INGS, GROCERIES *and* MEATS

The Largest Department Store in Western Kansas

ALL MAIL ORDERS FILLED PROMPTLY

SOUTH MAIN

HAYS, KANSAS

First National Bank

SINCE 1888, the year in which this Bank was founded, THE FIRST NATIONAL has played a prominent part in the progress of Hays and the surrounding community in its agriculture, stock-raising, and other industries. Forty-five years of contact with the people and their industries in this part of the State has placed THE FIRST NATIONAL in a position to serve these interests even better today.

THE FIRST NATIONAL BANK

"The Oldest Bank in Ellis County"

HAYS, KANSAS

FLOYD COLE'S

I. G. A. Stores

FANCY FRESH FRUITS
and VEGETABLES
GROCERIES *and* MEATS

PHONES

HAYS 799

ELLIS 237

LAUNDRY AND DRY
CLEANING
MONUMENTS

Your Patronage Appreciated

F. J. HOCH

HAYS

KANSAS

The VOGUE SHOP

LADIES' READY-TO-
WEAR, GIFTS, COS-
TUME JEWELRY

PHONE 70—LAMAR HOTEL

HAYS

KANSAS

Rafferty Motor Company

Sales and Service
HUDSON-ESSEX
TERRAPLANE

PHONE 226

HAYS, KANSAS



Printers and Binders for fifty-one years;
the leaders in fine College Annual printing and binding
for nineteen years . . . That tells what is behind
the "Kraft Built" trade-mark of the
Botz Printing Company

THE BOTZ PRINTING COMPANY
JEFFERSON CITY, MISSOURI

CAMPUS BOOK STORE

Built and operated to serve the College, the Faculty,
and students. Buys and sells new and used books.

Dealers in

NOTEBOOKS, STATIONERY, FOUNTAIN
PENS, TYPEWRITERS, GREETING
CARDS, COLLEGE SEALS, PENNANTS,
ART SUPPLIES *and* SPORTING GOODS

Send Us Your Mail Orders

JUST OFF THE CAMPUS

WE CARRY EVERYTHING USED IN COLLEGE

CZESKLEBA Music & Optical Co.

*The Home of Better Music
and Optical Service*



PHONE 167

110 W. 11TH

HAYS, KANSAS

Read

TODAY'S NEWS TODAY

in the

HAYS DAILY NEWS

The only newspaper in
Northwest Kansas with
full leased wire service
of the Associated Press.

By carrier daily to your door in
HAYS, OAKLEY, ELLIS, HILL
CITY, COLLYER, and
QUINTER

Sherwin-Williams Paints

ALCAZAR RANGES
PERFECTION STOVES
SENTINEL AUTOMATIC
WASHING MACHINES

*Complete Line of Fishing
Tackle and Hardware*

Winters Hardware

OSHANT'S

5c, 10c, AND \$1 STORE

BETTER MERCHANDISE
FOR LESS

"Leaders in Our Lines"

Red's Clean Shop

The College Barbers

Skilled to meet the
wants and demands
of college students.

GAY TILLOTSON

PROP.

Nep's Super Service

FIRESTONE TIRES
and BATTERIES

*Car Washing and
Greasing*

PHONE 400

HAYS, KANSAS

YEAR AFTER YEAR STUDENTS WILL FIND IT'S THE

ABC Drug Co.

The Rexall Store

Whether they need medicine, cosmetics, fountain pens, candy, stationery, or just a drink and chat at the fountain. What any good drug store should have you will find here.

FRIENDLY SERVICE

QUALITY MERCHANDISE

PHONE 80

The
GOLDEN BELT
Creamery & Ice Company



KINGS KWALITY ICE CREAM
 GOLDEN BELT BUTTER
 PURE CRYSTAL ICE

HAYS, KANSAS

DON'T SAY ICE CREAM
 SAY

KING'S KWALITY ICE CREAM

Fit for a King

Made only from the very purest products
 under the most sanitary conditions.

SERVED IN ALL OF THE LEADING DRUG STORES AND CAFES
 IN WESTERN KANSAS

SCHERER'S

LADIES'
 READY-TO-WEAR

HAYS

KANSAS

*A Complete Line of
 Your Needs*

Everything you want
 for the family can be
 purchased here. Qual-
 ity merchandise and
 costs less.



Brock's

*Funeral
 Home*

HAYS

KANSAS

Duckwall's
 "QUALITY, SERVICE AND PRICE"

HAYS

KANSAS

T. G. Reed & Sons

Exclusive

GROCERIES *and* MEATS
FRESH FRUITS *and*
VEGETABLES

Modern

PHONE 480 HAYS, KANSAS



*Every Article Sold
Bears an Unquali-
fied Guarantee*

PHONE 839

HAYS

SUBSCRIBE

TO

The State College Leader

Keep in weekly touch
with your friends,
both in and out of
college.



*The Best Student Advertising
Medium*

STYLE

You Will Always Find the Newest Cre-
ations in Wearing Apparel for Men,
Women, and Children at This Store.

*If You Really Want the New Things
You Will Not Regret a Visit To*

THE CLASSIC-STORE
ALEX E. BISSING

SOUTH MAIN

HAYS, KANSAS

ST. ANTHONY'S HOSPITAL

HAYS, KANSAS



SISTER M. EVARISTA, R. N.
Superintendent



This space reserved and paid for by
THE ACTIVE STAFF

“Where Your Business is Appreciated”

(JUST OFF THE COLLEGE CAMPUS)

FIRST HERE—FIRST TO SERVE

CANDIES
STATIONERY
COLLEGE PENNANTS
COLLEGE STICKERS
COLLEGE TEXTBOOKS
COLLEGE SUPPLIES
CORRESPONDENCE
BOOKS AND PAPER

Eventually—Why Not Now?

Buy From Your

**CALLAGHAN
BOOK STORE**

C. W. McKEE

HAYS

PHONE 90

KANSAS

QUALITY FOODS

ICE CREAMS
SANDWICHES
TASTY SALADS
TOASTED SANDWICHES
DELICIOUS PASTRIES
BOTTLED GOODS
HOME-COOKED MEALS

*When in Hays—
Meet at*

MACKS

C. W. McKEE

HAYS

PHONE 90

KANSAS

Patronize Our Advertisers

This yearbook was largely made possible through the splendid co-operation of our local advertisers. We thank them for their support and invite students to reciprocate by patronizing them.



THE STAFF, 1933 REVEILLE

