

1927

Reveille - 1927

Fort Hays State University

Follow this and additional works at: <https://scholars.fhsu.edu/yearbooks>

Content Disclaimer

The primary source materials contained in the Fort Hays State University Special Collections and Archives have been placed there for research purposes, preservation of the historical record, and as reflections of a past belonging to all members of society. Because this material reflects the expressions of an ongoing culture, some items in the collections may be sensitive in nature and may not represent the attitudes, beliefs, or ideas of their creators, persons named in the collections, or the position of Fort Hays State University.

Recommended Citation

Fort Hays State University, "Reveille - 1927" (1927). *Reveille Yearbooks*. 13.
<https://scholars.fhsu.edu/yearbooks/13>

This Book is brought to you for free and open access by the Student Experience Collections at FHSU Scholars Repository. It has been accepted for inclusion in Reveille Yearbooks by an authorized administrator of FHSU Scholars Repository. For more information, please contact ScholarsRepository@fhsu.edu.



REVELLE
19 27





PRIVATE LIBRARY

R. L. PARKER,

No. _____

THE
Reveille
1927

PUBLISHED
BY THE
KANSAS
STATE
TEACHERS
COLLEGE
VOLUME
FOURTEEN

W
378.781
H-P
1927
e.2



Foreword

TO FORM A RECORD OF THE ACTIVITIES, ASSOCIATIONS AND ACHIEVEMENTS OF THE STUDENTS AT K.S.T.C. OF HAYS THAT WILL BRING BACK HAPPY MEMORIES OF COLLEGE DAYS HAS BEEN THE ENDEAVOR OF THE 1927 REVELLE STAFF.

37765

Gift



P.L. Parker

Dedication

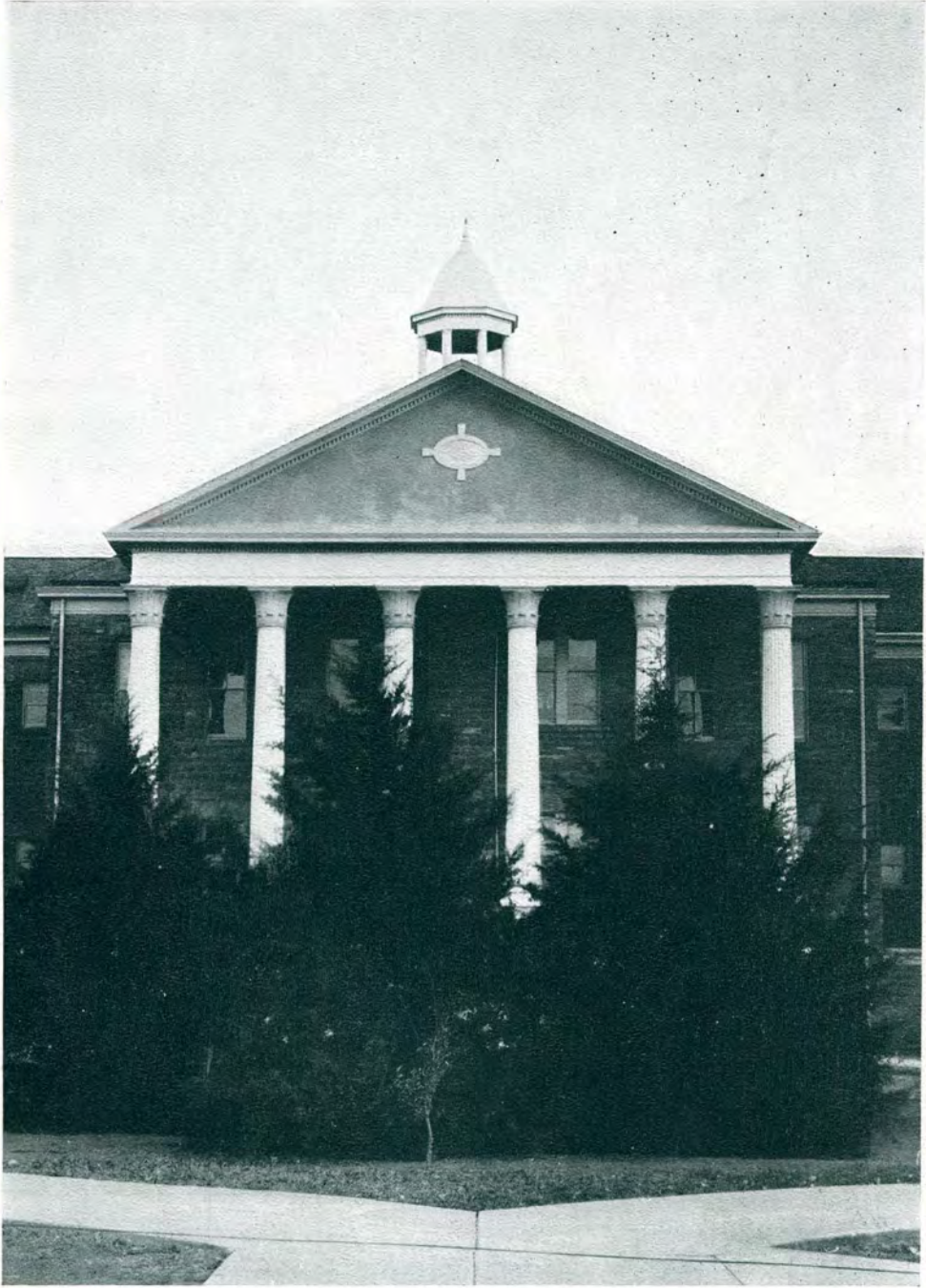
AS A RECOGNITION
OF HIS SERVICE AS A
TEACHER, OF THE IN-
SPIRATION OF HIS
FRIENDSHIP AND THE
HIGH IDEALS WHICH
HE UPHOLDS WE
AFFECTIONATELY DED-
ICATE THIS VOLUME
OF THE REVELLE TO
CLARENCE EDMUND
RARICK

6-2-57



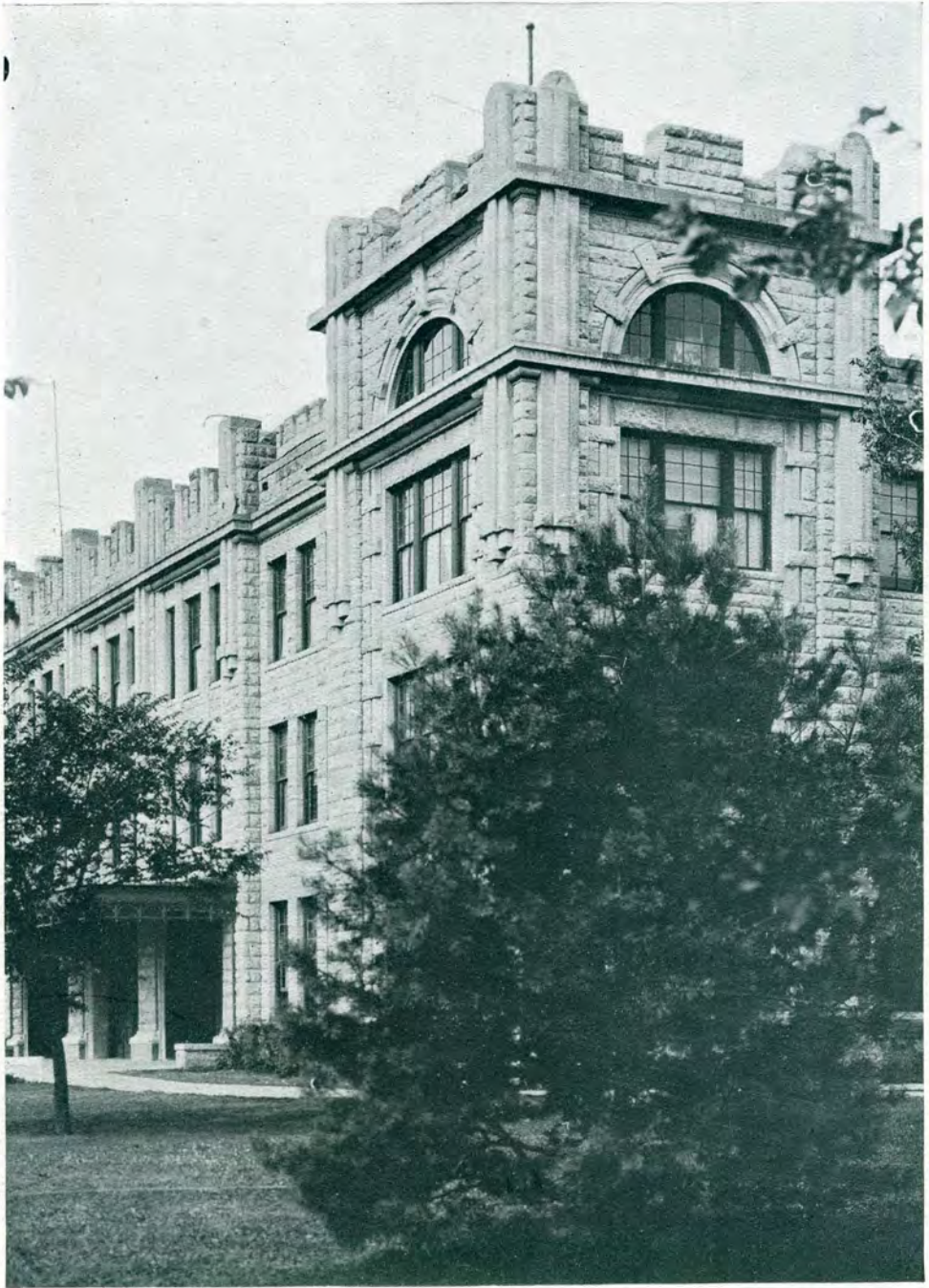
Order of Books

1. COLLEGE
2. ADMINISTRATION
3. CLASSES
4. ATHLETICS
5. ORGANIZATION



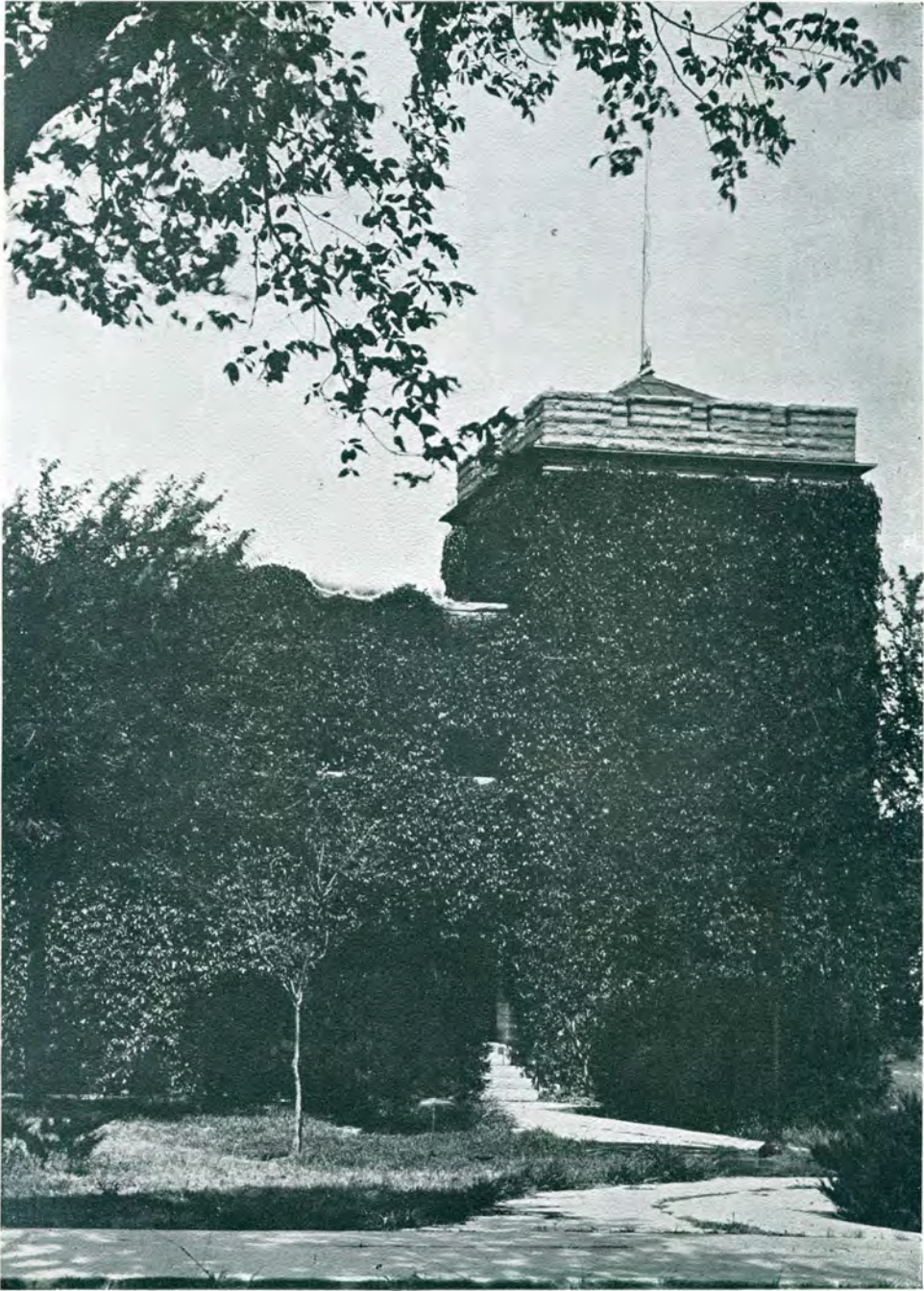
*Here, first we entered college life;
This was our seat of learning.
The lure of books, and wisdom's ways,
Set our true souls a-yearning.*

Picken Hall



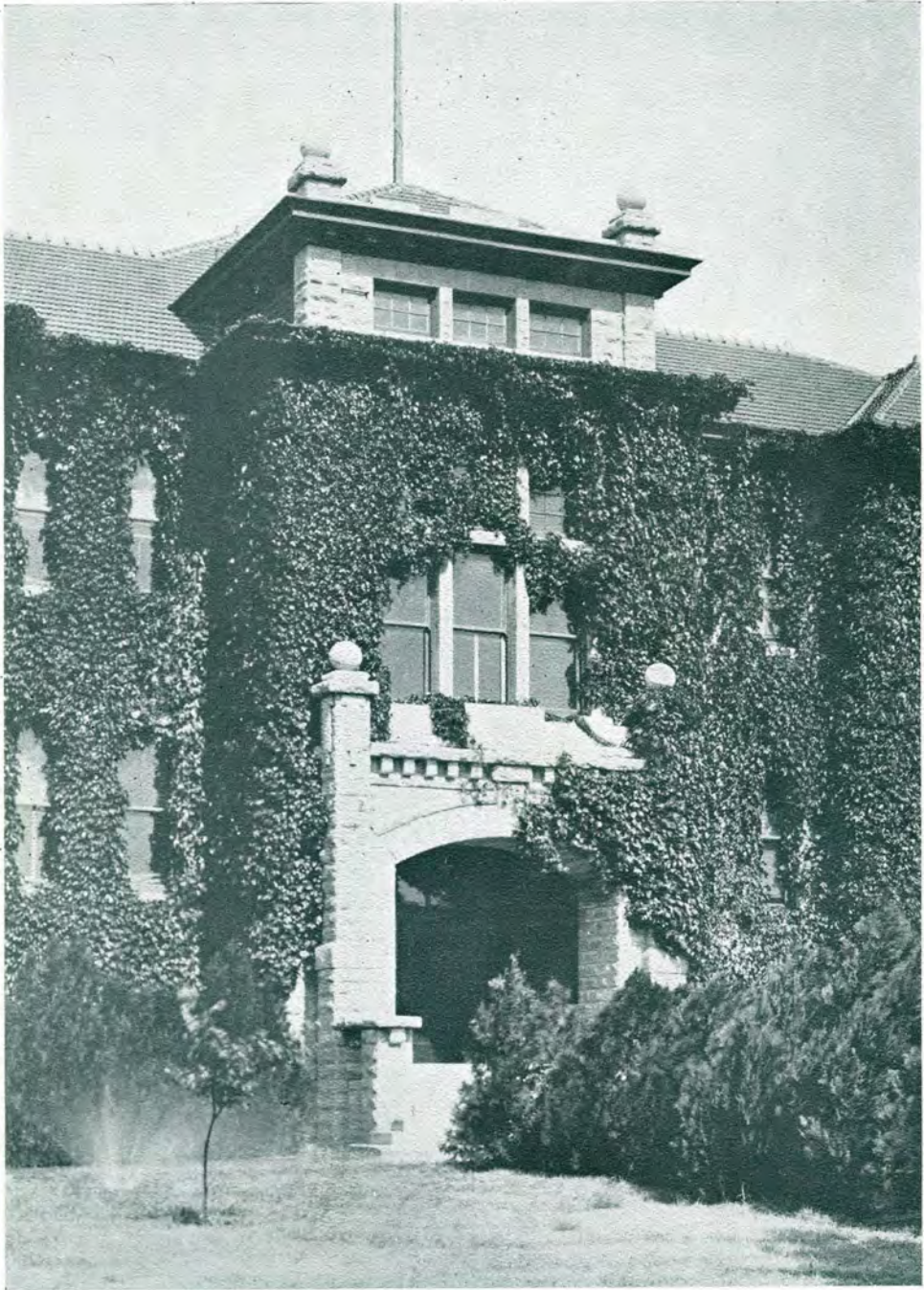
*Unto this place of wide-spread fame
With music strangely sweet,
Our thoughts will oft return again
With memories rich, complete.*

Sheridan Coliseum



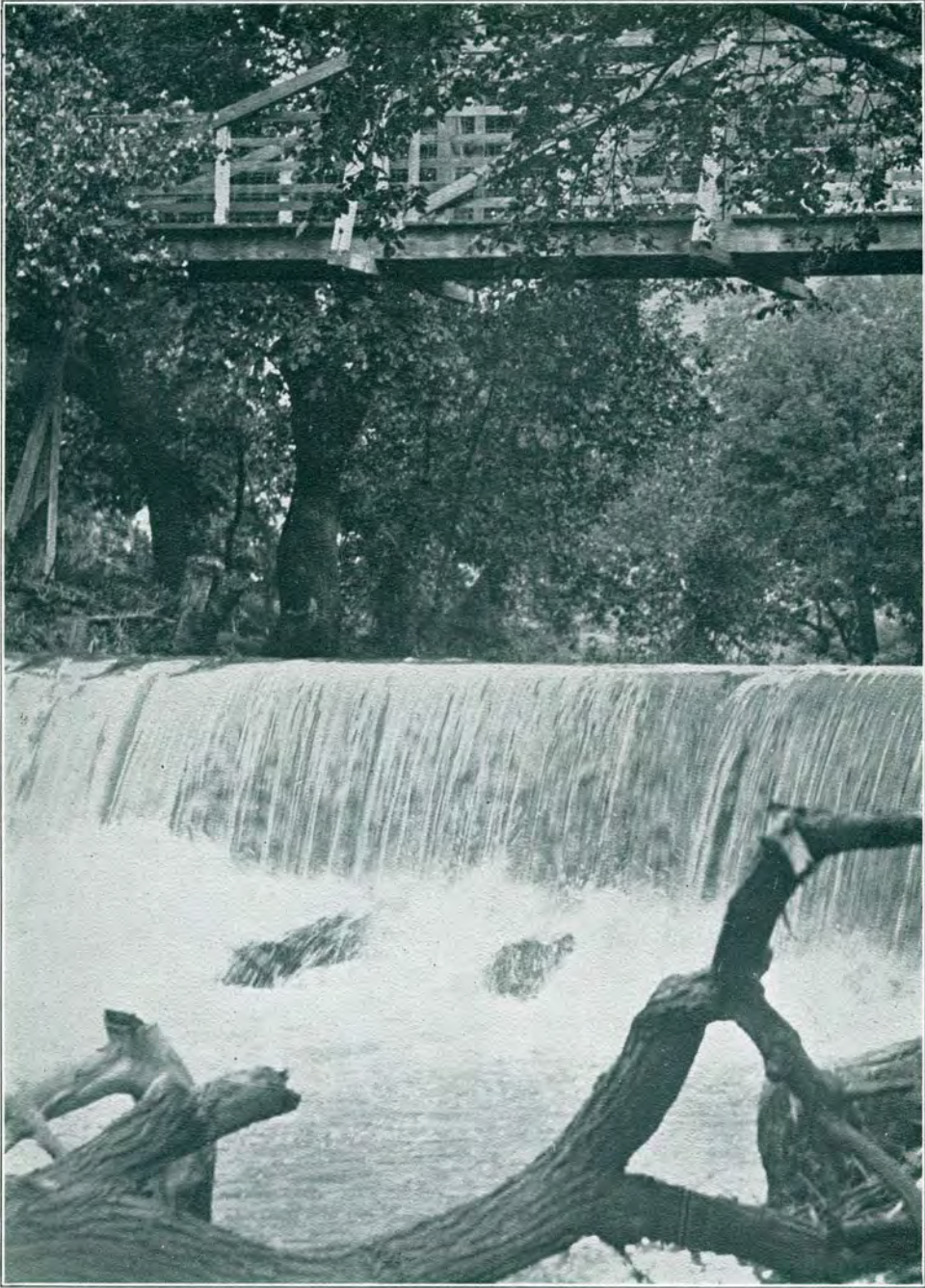
*The years may come, as swiftly go,
Our freindships real and true
We'll ne'er forget, and the good times,
That we've enjoyed with you.*

Woman's Building



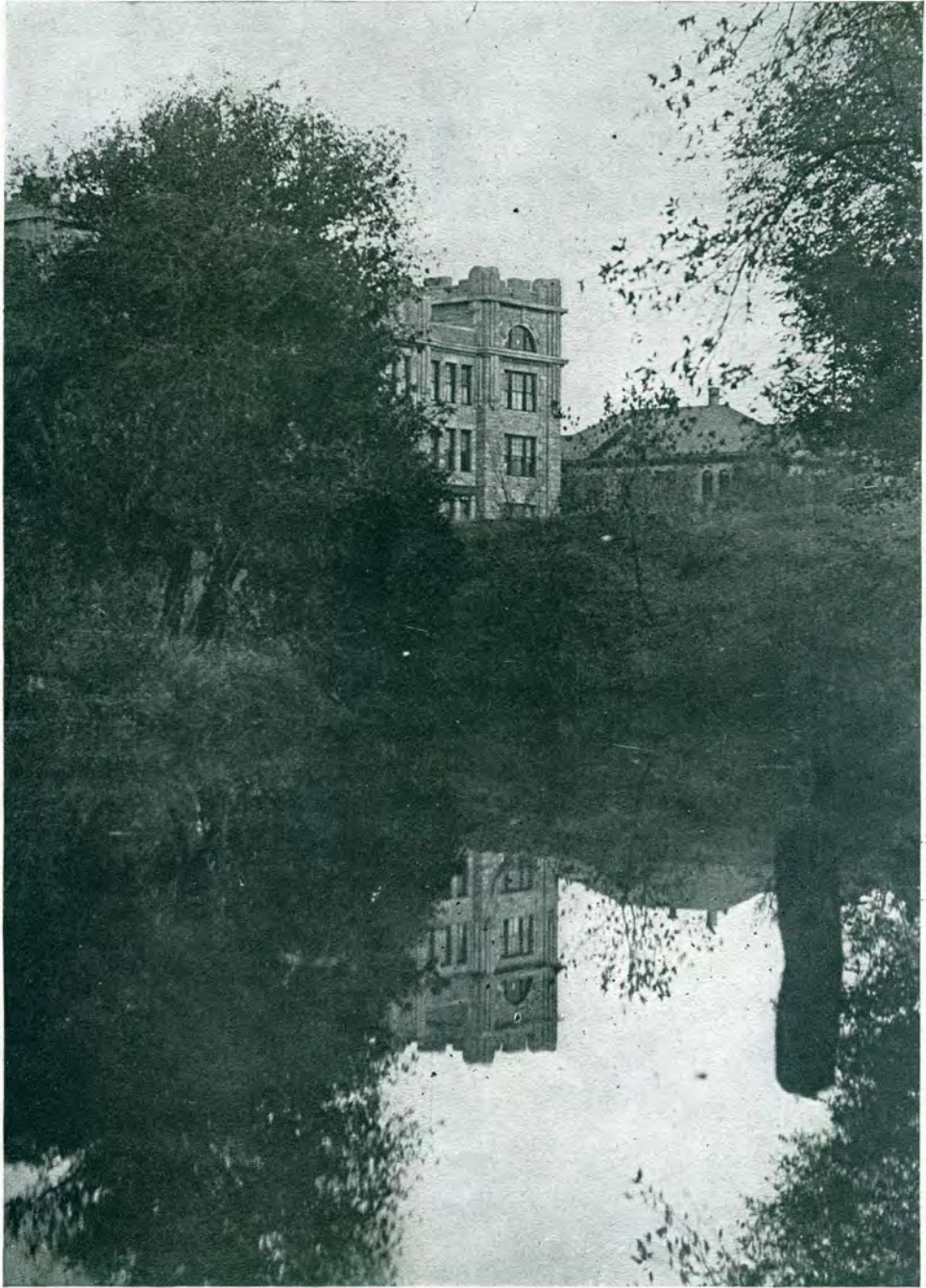
*No man is born into the world whose work
Is not born with him. There is always work,
And tools to work withal, for those who will.*

Industrial Building



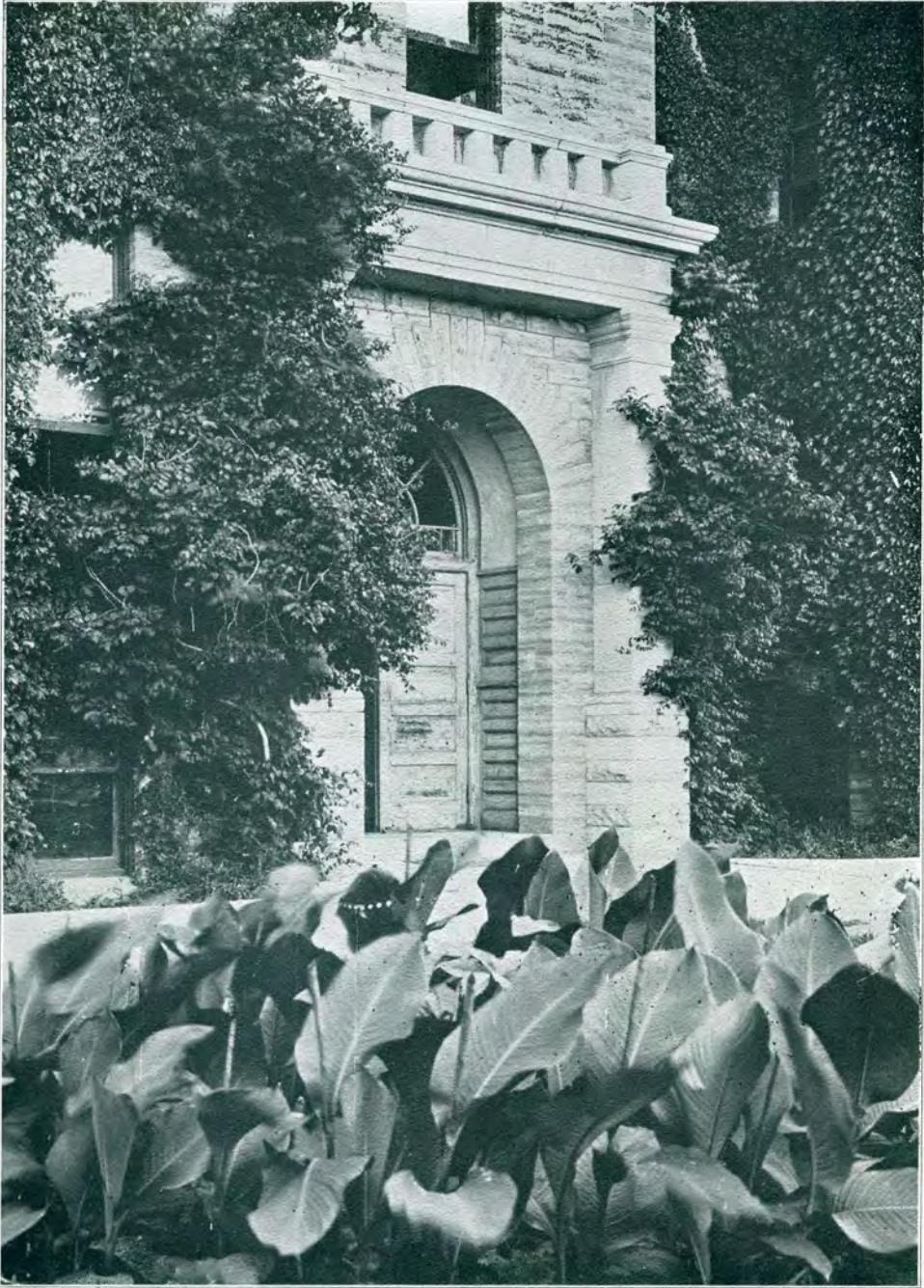
*Oh, I have roamed o'er many lands,
And many friends I've met;
Not one fair scene or kindly smile
Can this fond heart forget.*

The Footbridge



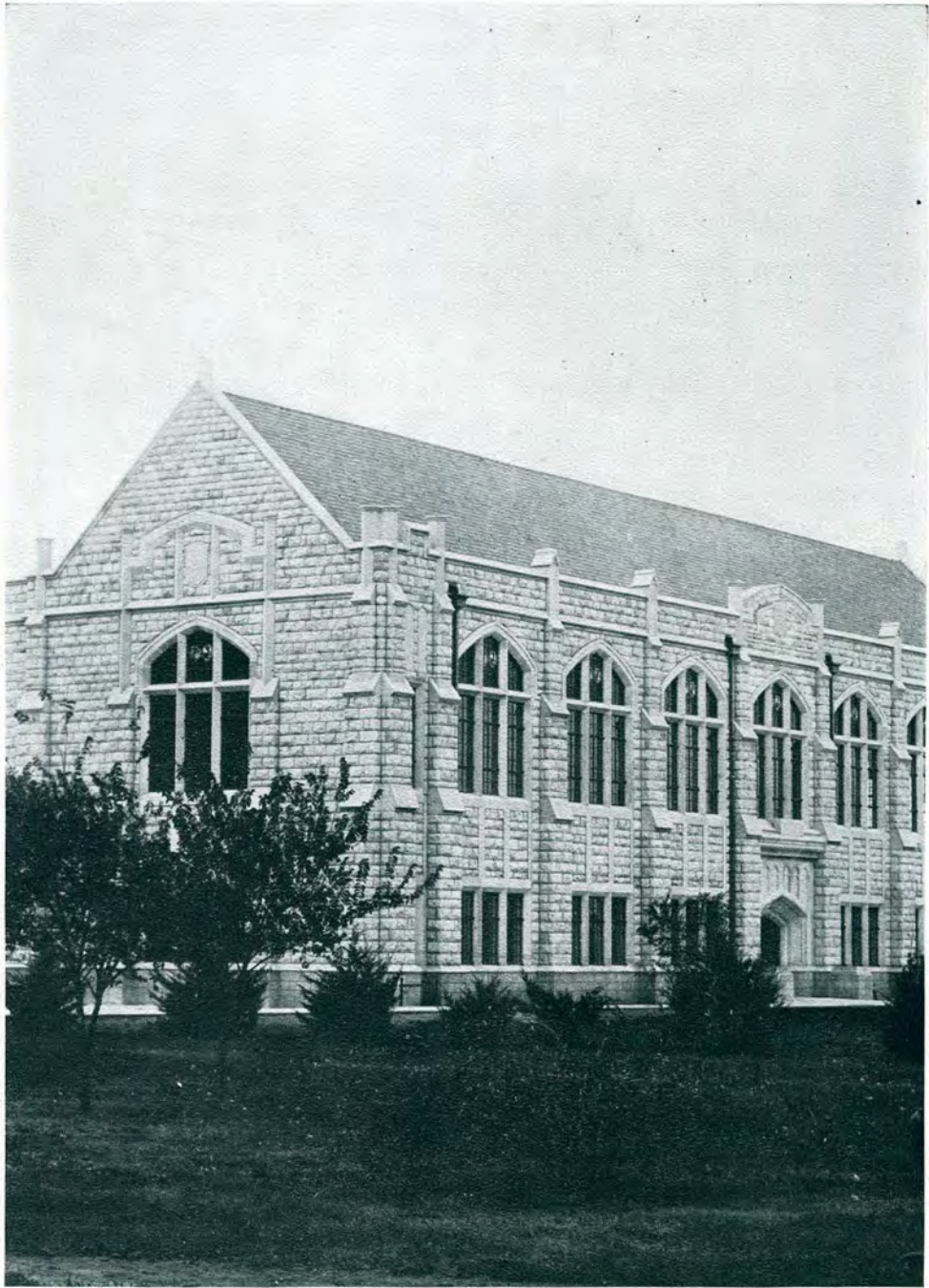
*A thing of beauty is a joy forever:
Its loveliness increases; it will never
Pass into nothingness, but still will keep
A bower quiet for us.*

Looking Toward Sheridan



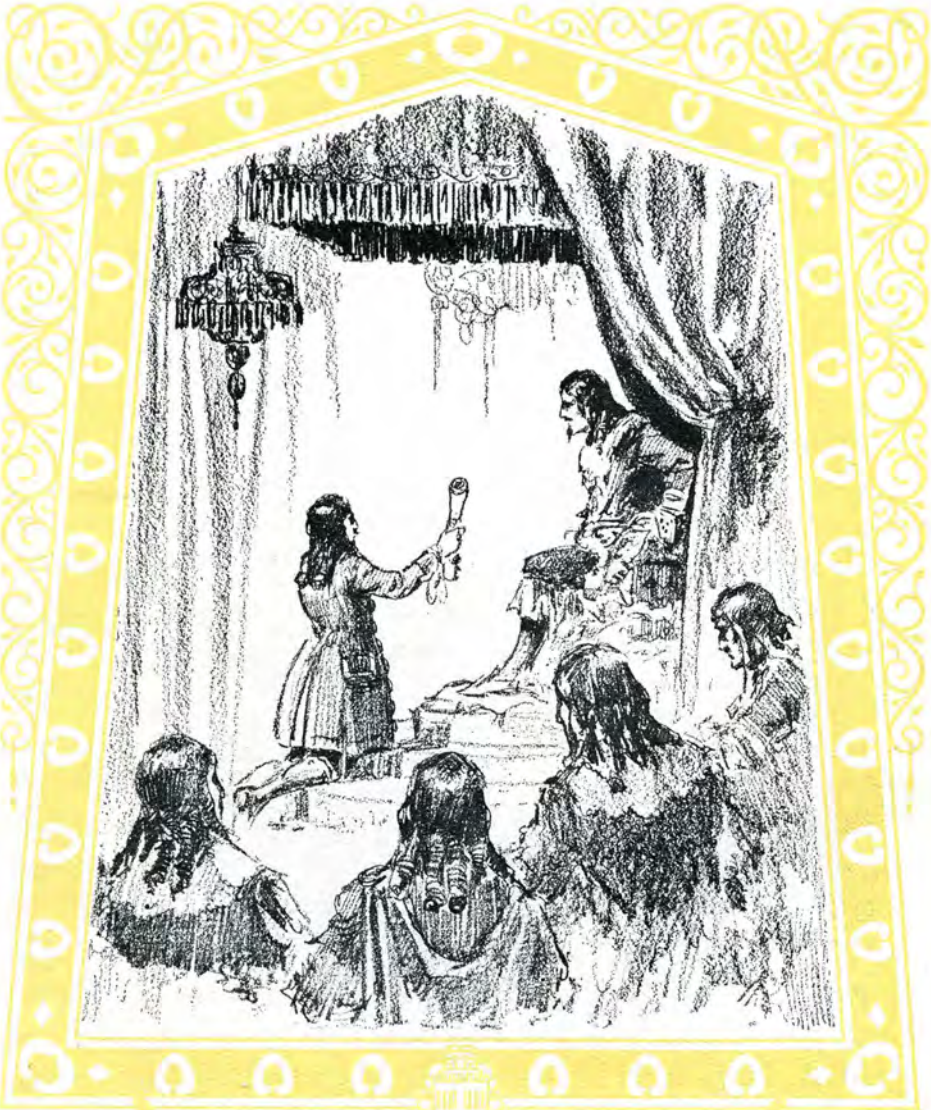
*Thought is deeper than all speech,
Feeling deeper than all thought;
Souls to souls can never teach
What unto themselves was taught.*

Entrance to Academic Building



*Dreams, books, are each a world; and books, we know,
Are a substantial world, both pure and good.
Round these, with tendrils strong as flesh and blood,
Our pastime and our happiness will grow.*

Forsyth Library



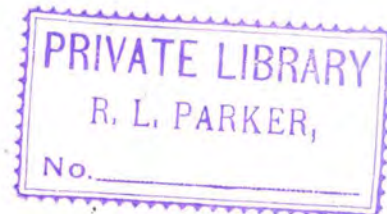
ADMINISTRATION

BOARD OF REGENTS

THE State Educational Institutions of Kansas are controlled by the State Board of Regents. The present members of the board are:

W. Y. MORGAN, Chairman	Hutchinson
B. C. CULP	Beloit
C. M. HARGER	Abilene
C. B. MERRIAM	Topeka
G. S. SPENCER	Sedan
E. W. EVANS	Wichita
G. H. HODGES	Olathe
MRS. J. S. PATRICK	Santa Fe
W. J. TOD	Maplehill

We certainly appreciate the interest that the Board of Regents has shown in helping to put the Kansas State Teachers College, Hays, on the high level which it now occupies.





WILLIAM A. LEWIS, B. S., A. B., LL. D.
*President of the Kansas State Teachers College of Hays
since March, 1914*

WILLIAM ALEXANDER LEWIS

FOURTEEN years ago a man with broad vision, unlimited energy, a magnetic personality, and unusual executive ability came to the Fort Hays Normal School as its president. Through his efforts we have seen our school built into an accredited college, have seen its enrollment doubled several times. Though possibly not as readily seen, his influence in inspiring and directing the lives of the young people with whom he works, has been as productive of results.

President William A. Lewis was born in Dwight, Illinois. He received his early education in a rural school and small-town high school. After graduating from the Chillicothe Normal College, he taught a country school. He received a B. S. degree from the Valparaiso (Indiana) University in 1899, an A. B. degree in 1910, and an LL. D. degree in 1914. He was a student at the Armour Institute of Technology, and at the University of Wisconsin. From 1901 to 1903 he was professor of physics in the State Teachers College, Warrensburg, Missouri.

The next four years were spent as a teacher of chemistry in Kansas City, Missouri, first in the Central High School, and then in the College of Pharmacy. After six years' work in the Missouri State Teachers College, he became director of the State Demonstration Farm at the University of Utah and professor of industrial education. From Utah he came to our institution.

As we review the work of the past fourteen years, we can clearly see a still bigger and more worth-while future for our college under the leadership of a man as capable as President Lewis.



FLOYD B. LEE, A. B., A. M.
Dean of the Faculty and Director of Extension
 Kansas State Teachers College, Emporia;
 University of Kansas.



ELIZABETH JANE AGNEW, B. S.
Dean of Women
 Kansas State Agricultural College, Colum-
 bus University.



C. E. RARICK, A. D.
Professor of Rural Education
 Kansas Wesleyan University; University
 of Colorado; University of Kansas.



CHARLES ARTHUR SHIVELY, A. B., A. M.
Professor of Education
 Ex Officio City Supt.; Kansas State Teach-
 ers College, Emporia; University of Kansas;
 University of Chicago.



JOSEPHINE WEATHERLY, B. O., B. S., A. M.
Assistant Professor of Education

Kansas State Christian College; Kansas State Teachers College, Emporia; University of Chicago; Study in Germany.



LULU MCKEE

Assistant Professor of Education

Bowman Memorial, Kindergarten Training School; Washburn College; Kansas University; Story-Telling work with Martha Sherwood, Richard T. Wyche and Georgiana Speer.



ADAH CAIN, B. S., M. S.
Assistant Professor of Education

Kansas State Teachers College, Hays; University of Kansas.

Page 17



MARIA A. STEVENSON
Assistant Professor of Education

Lane University; Fort Scott (Kansas) Normal School; Kansas State Teachers College, Emporia; Baker University.



HENRY EDWARD MALLOY, B. S.
Director of Music

K. S. T. C., Emporia; Bethany College; Voice under George Hamlin, Chicago; Ella Bochus-Behr, Berlin; Hinshaur of Metropolitan Opera, N. Y.; George Ferguson, Berlin; Kirk Towns, Berlin.

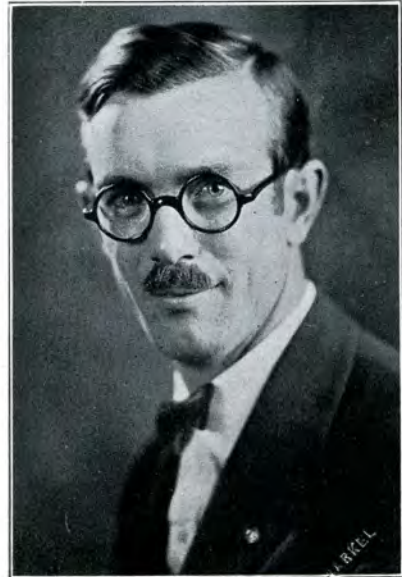


ROLLINS AN-GOVE SEABURY, A. B.
Professor of Music Theory

University of Maine; University of N. Dak.; Northwestern University; Voice under H. Aden Enyeart.



HELEN IDE MORSE, B. S.
Northwestern University; University of Wisconsin.

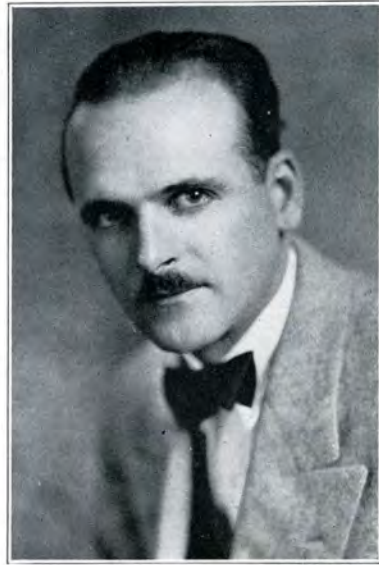


J. ALFRED CASAD, A. B., B. M.
Assistant Professor of Voice
Director of Men's Glee Club
Heidelberg University, Tiffin, Ohio.



LUCILLE FELTON
Assistant Professor of Piano

Kansas State Teachers College, Hays;
Alexander Raab; Caruthers Normal School of
Piano, Chicago.



PAUL FONTAINE, B. M.
Professor of Piano

Northwestern University, Evanston, Ill.



JAMES E. ROUSE, B. S. M. S.
Professor of Agriculture

Teachers College, Kirksville, Mo.; Uni-
versity of Wisconsin; Kansas State Agri-
cultural College.

Page 19



FRED W. ALBERTSON, B. S.
Associate Professor of Agriculture

Kansas State Teachers College, Hays;
University of Missouri.



R. L. PARKER, B. L., B. S., A. M.
Professor of History
 Ottawa University; University of Chicago.



C. H. LANDRUM, A. B., A. M.
Assistant Professor of History and Mathematics
 Kansas University; Yale University.



EDWIN DAVIS, B. S.
Professor of Manual Arts
 Kansas State Teachers College, Hays;
 Kansas State Teachers College, Emporia;
 Manual Training Normal; Kansas State Agricultural College.



ELSIE HARRIS, A. B., B. F. A.
Professor of Applied Arts
 University of Oklahoma; Snow-Froehlich School of Industrial Art, Chicago;
 Boulder University; Columbia University.



CHARLES F. WIEST, D. D.
Professor of Literature
Gettysburg College; Gettysburg Theological Seminary; Midland College.



THORNTON W. WELLS, B. S.
Assistant Professor of English
Kansas State Teachers College, Hays; Kansas State Agricultural College.



CHARLES H. BROOKS, B. S.
Head of Correspondence-Study Department, Extension Division.
K. S. T. C., Hays.



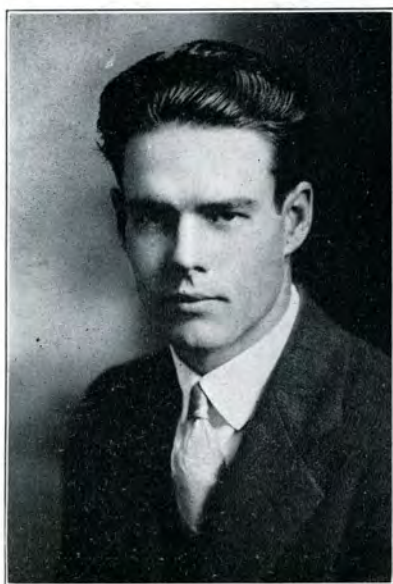
LEON S. PICKEN, A. B., B. J.
Professor of Journalism
Fairmount University; University of Missouri.



ROY RANKIN, A. B., A. M.
Professor of Chemistry and Bacteriology
Kansas State Teachers College, Emporia;
University of Kansas; Harvard University.



L. D. WOOSTER, A. B., Ph. M.
Professor of Biological Sciences
Kansas State Teachers College, Emporia;
University of Wisconsin.



EARL BARRY, B. S.
*Laboratory Assistant in Chemistry and
Bacteriology*



WM. D. WEIDLEIN, B. S.
*Professor of Physics and Supt. of Power and
Heat, Football Coach*
Kansas University.



A. M. VANCE, B. E., A. B., A. M.
Professor of Commerce

James Milliken University; Peru State Normal; Nebraska Wesleyan University; Nebraska University.



W. S. BRIGGS, B. S.
Professor of Accounting and Penmanship

Central Normal College; Miss. A. & M. College; University of Washington.

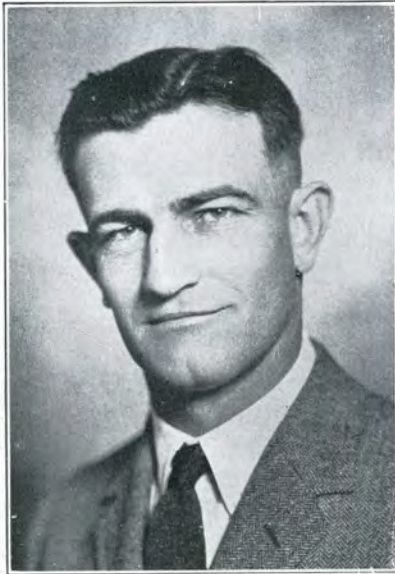


HARRIETT M. SCHWENKER, B. S.
Instructor, Stenographic Department

Nebraska Peru State Normal; Nebraska School of Business; University of Nebraska.



EDWARD E. COLYER, A. B., A. M.
Professor of Mathematics
Cooper College; University of Kansas.



FRANK P. MANDEVILLE, A. B.
Professor of Physical Education for Men
Kansas University.



GRACE R. KRATZ
Social Director of Custer Hall
Ames College; Coe College, Iowa.



MILDRED STEPHENS, B. S.
Professor of Physical Education for Women
Kellogg School of Physical Education;
University of Oregon.



GERTRUDE COLE
Assistant Professor of Physical Education for Women
Kellogg School of Physical Education,
Battle Creek, Mich.



ETHELL SNODGRASS, B. S., A. M.
Professor of Home Economics
Purdue University; Columbia University.



MARY ANN STEPHENS, A. A., B. S.
Assistant Professor of Home Economics
Stephens Junior College; University of
Missouri; University of Wisconsin.



VICTOR C. JOHNSON
*Professor of Telegraphy and Station
Accounting*



MODESTO JACOBINI, A. B.
Professor of Modern Languages
Liceo, Taranto, Italy; American Inter-
national College; Yale University; New York
University; University of Chicago.



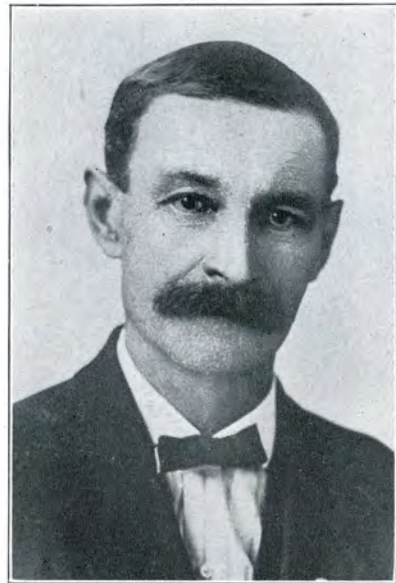
FLOYD BENJAMIN STREETER, A. B., B. S.,
M. A.
Librarian
University of Kansas.



SARA MCMONIGLE, B. S.
Assistant Librarian
Park College, Missouri.



ESTHER REEMSnyder, B. S.
Assistant Librarian
K. S. T. C., Hays.



FRED J. WAGNER
Custodian



EMMA F. WILSON, B. S.
*Instructor, Correspondence-Study Department
 Extension Division*
 K. S. T. C., Hays; Greeley, Colo.; Agricultural College of Colorado.

ETHEL BOWEN, B. S.
*Instructor, Correspondence-Study Department,
 Extension Division*
 K. S. T. C., Hays.

OFFICE GIRLS



CORA BIBENS	Secretary to the President
MARGARET MCJIMSEY	Financial Secretary
EVA HEDGES	Secretary to Extension Division
HESTER BUELL	Secretary to the Registrar
MARJORIE MENELEY	Secretary to Public Service



In Memoriam

Wm. S. Picken

"

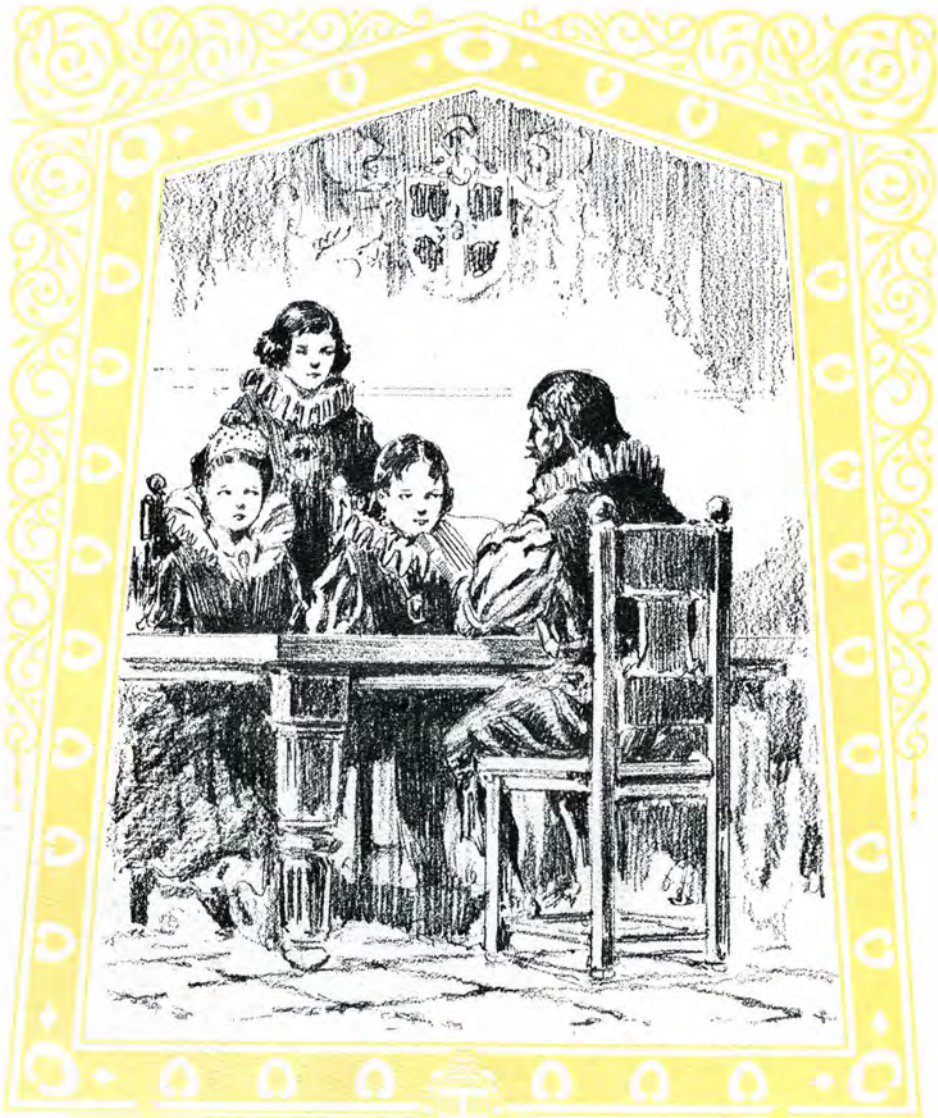
Born

Dec. 18 1862

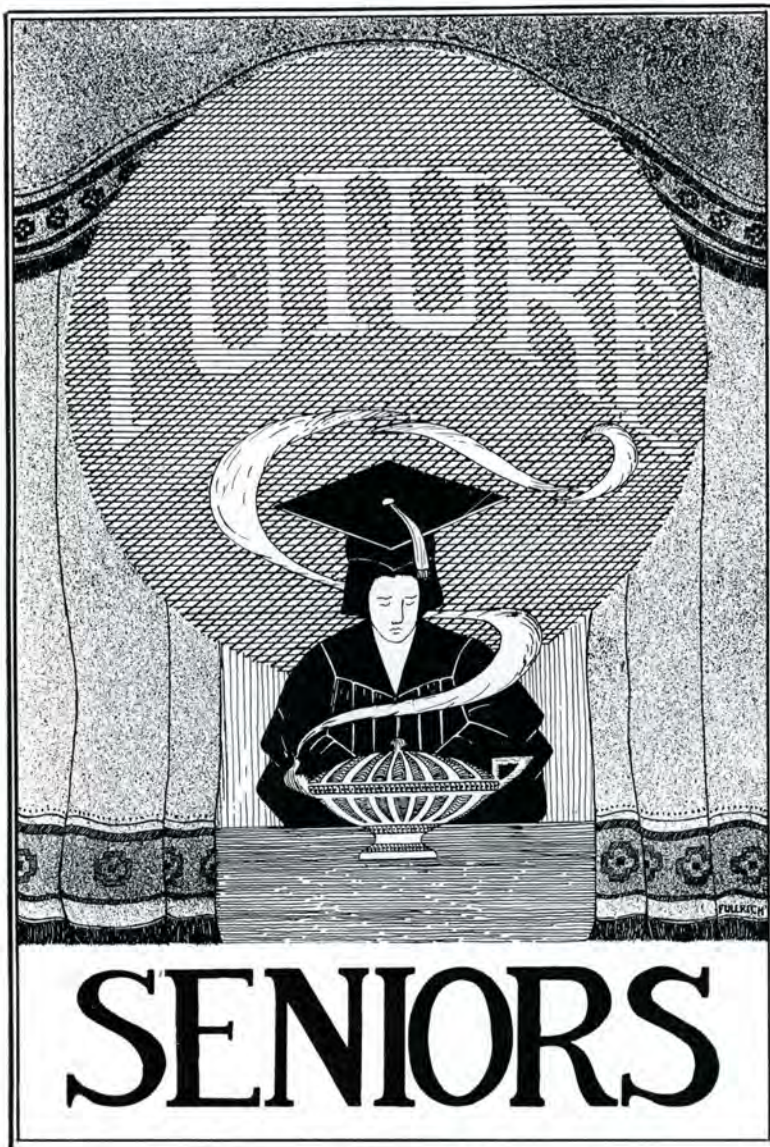
Died

Oct. 21 1926

"



CLASSES





MAUDE BALDRIDGE, *Garden City*
Business Administration

Commercial Club, Chorus, transferred from Southwestern and McPherson College.

MARY TEAGUE *Collyer*
History

W. A. A., Chorus, Y. W. C. A.

ELLA SHEARER *Arnold*
Kindergarten

Y. W. C. A., Cab., W. A. A., Chorus, Sports.

ARCHEL GANOUNG *Plainville*
Manual Arts

Boxing, Wrestling, Parliamentary Law.

EMMA K. HOWE *Paradise*
Physical Education

Y. W. C. A., Cab., W. A. A., Life Saving, Corps.

GRACE SPENCER *Hays*
Home Economics

Kappa Omicron Phi, Sports, Home, Ec., Club Chorus, W. A. A.

BERTHA M. RICHARDS *Ada*
English

Y. W. C. A., Parliamentary Law, Chorus.

MRS. VIOLET BRIGGS *Hays*
Home Economics

Kappa Omicron Phi, Omega Epsilon Sigma, Home Economics Club, Commerical Club, transferred from U. of Washington.

SHERWIN B. GRISWOLD *Rossville*
Agriculture

Sigma Tau Gamma, Football, Track, Glee Club.

BEULAH L. DAVIES *Littleton, Colo.*
Physical Education

W. A. A., Life Saving Corps, Athletics, Chorus, Glee Club.

WALTER MCFERRIN *Oberlin*
General Science
 K. Club, Y. M. C. A.

MARGARET M. SCOTT *Abilene*
English
 Y. W. C. A., Home Ec. Club, Girl Reserve,
 Leader Staff, transferred from K. S. A. C.

ROSINA ALLBERT *Hays*
Physical Education
 Gamma Sigma, W. A. A., Y. W. C. A.,
 Athletics, Chorus, Sports.

GLADYS KRAUS *Hays*
English
 Chorus, Leader Staff, Reveille Staff, Y.
 W. C. A. Campfire.

BERTHA HUNTER *Barnard*
Home Economics
 Delta Sigma Epsilon, Kappa Omicron
 Phi, Home Ec. Club, Y. W. C. A., trans-
 ferred from K. S. T. C., Emporia.

FRANCES HURLOCK *Lincoln*
Home Economics
 Delta Sigma Epilson, Kappa Omicron
 Phi, Pan-hellenic, Home Ec. Club, Chorus,
 Sports, W. A. A., Y. W. C. A.

CARL W. DEWS *Topeka*
Voice
 Phi Mu Alpha, K. Club, Glee Club,
 Chorus, Quartette, Track.

BLANCHE HOCH *Hays*
Spanish
 Kappa Omicron Phi, Omega Epsilon
 Sigma Pres. '26 Pan-hellenic, Y. W. C. A.,
 Home Ec. Club.

M. LUCILLE RIEGEL *Hays*
Home Economics
 Kappa Omicron Phi, Home Ec. Club,
 Chorus, Dramatics.

CLAUDE L. BURCHETT *Oberlin*
Business Administration
 Commerical Club.





MRS. ANNABEL HUTCHINSON *Hays*
Home Economics

Kappa Omicron Phi, Y. W. C. A., Chorus,
Home Ec. Club.

LOIS NORTHUP *Quinter*
Home Economics

Kappa Omicron Phi, Home Economics
Club.



DARREL HINKHOUSE *Palco*
Agriculture

Kappa Phi Alpha, Basket Ball.

ALICE BURDITT *Hays*
Home Economics

Chorus, Y. W. C. A., Home Ec. Club,
Kappa Omicron Phi.



GOLDIE PROFFITT *Alden*
Literature

Tau Upsilon Phi, Tearin' Tigers, Exec.
Council, Y. W. C. A., Cab., Leader Staff,
Reveille Staff, Girl Reserve.

MABELLE BILLINGS *WaKeeney*
Public School Music and Piano

Glee Club, Chorus, Y. W. C. A., W. A. A.



CATHERINE LEWIS *Hays*
Modern Languages

Gamma Sigma, Y. W. C. A., Cab., Glee
Club, Chorus.

J. T. VON TREBRA *Oswego*
Social Science

Pi Kappa Delta, Debate, Exec. Council,
Y. M. C. A., Cab., Pres. Student Assembly,
transferred from K. S. A. C.



VERNA ROPER *Hays*
History

Band, Y. W. C. A., Chorus.

WILLIAM RICHARDS *Hays*
Agriculture

Parliamentary Law, Y. M. C. A., Chorus,
College Greenhouse.

WILFRED CRISSMAN *Hays*
Manual Arts

Y. M. C. A., Scouting, Parliamentary Law.

IVA COFFIN *Phillipsburg*
English

Y. W. C. A., Chorus.

IDA D. BROOKS *Lakin*
Literature

Y. W. C. A., Chorus, Art Lovers' Club.

M. V. WALKER *Englewood*
Biological Science

Y. M. C. A., Glee Club, transferred from Southwestern College.

JULEFF COLES *Hays*
Literature

Omega Epsilon Sigma, President '25, Panhellenic, Art Lovers' Club, Oratory, Campfire, Girl Reserve.

WILDA TRIMMER *Gove*
English

Glee Club, Chorus, Y. W. C. A., Cab., Tau Upsilon Phi.

ERNESTINE FIELDS *Hays*
Public School Music.

Omega Epsilon Sigma, Orchestra.

MARY R. RUSSELL *Jewell*
English

Sigma Sigma Sigma, W. A. A., Y. W. C. A., Chorus, Leader Staff.

ERICK JERNBERG *Lindsborg*
Manual Arts

Basketball.

DORIS ADAIR SEXTON *Garden City*
Art

Art Lovers' Club, Girl Reserve, Y. W. C. A., transferred from Garden City Junior College.





IRWIN McVEY *Lucas*
Manual Arts

Football Capt. '26, Chairman Board of Control for Leader, Senior Pres., Scouting.

Laura C. NICKEL *Hays*
English

Y. W. C. A., Art Lovers' Club, Girl Reserve, Exec. Council '20, Y. W. C. A., Cab.

RUTH ROUNER *Luray*
Home Economics

Home Ec. Club, Y. W. C. A.

ANDREW RIEGEL *Ford*
Agriculture

Sigma Tau Gamma, K. Club, Y. M. C. A., Cab., Football, Basketball, Track, Chorus, Yell Leader.

CARL W. BAKER *Larned*
Agriculture

Sigma Tau Gamma, Basketball, Y. M. C. A., Band, Parliamentary Law.

EDITH L. PECK *Sylvan Grove*
Home Economics

Y. W. C. A., Cab., Home Ec. Club, Chorus, Girl Reserve.

VIOLA JOHNSTON *Kipp*
English

Sports, Y. W. C. A., W. A. A., Chorus, Art Lovers' Club.

FLORA MAY LEMLEY *Downs*
Home Economics

Y. W. C. A., Chorus, Campfire, Home Ec. Club, Girl Reserve.

VERA ENRIGHT *Hays*
Home Economics

Y. W. C. A., Home Ec. Club, Campfire.

NOVA G. MOODY *Hays*
Mathematics

Y. M. C. A., Glee Club, Chorus.

MILDRED CARTER *Kipp*
Music

Gamma Sigma, Glee Club, Quartette,
Chorus, W. A. A.

CARL J. MALMBERG *Hays*
Music

Phi Mu Alpha, Orchestra, Glee Club,
Band.

LUCY KINSEY BLEDSOE *Ellsworth*
Social Science

Chorus, Y. W. C. A., transferred from
Ottawa University and Missouri U.

GEORGE PEARCE *Downs*
Manual Arts

Y. M. C. A., Chorus, Scouting, Hi-Y, Art
Lovers' Club, Parliamentary Law.

JIMMIE SHEA *Selden*
Agriculture

Sigma Tau Gamma, Tearin' Tigers, Y. M.
C. A., Chorus.

LUCILLE ROTROFF CLARK *Geneseo*
Literature

Y. W. C. A.

PRESTON MAXWELL *Randall*
Agriculture

Sigma Tau Gamma, Football, Y. M. C. A.,
Glee Club, Chorus.

BESSIE A. ROGERS *Ransom*
Public School Music

Chorus, Parliamentary Law.

FRANCES L. OHEIM *Kinsley*
Business Administration

Commercial Club, Y. W. C. A., Chorus.

FREDA VEVERKA *Salina*
Biological Science

W. A. A., Y. W. C. A., Chorus, Sports,
transferred from Kansas Wesleyan.





RUTH LEWIS *Palco*
Home Economics
 Glee Club, Chorus, Home Ec. Club.

KENNETH WHEAT *LaCrosse*
Agriculture
 K. Club, Basketball.



MARTHA BIGGE *Hays*
Business Administration
 Commercial Club, Chorus, Y. W. C. A.

GRETA BLUME *Garfield*
Business Administration
 Sigma Sigma Sigma, Y. W. C. A., Commercial Club, Chorus, Basketball.



B. Z. WOODS *Greensburg*
History
 Y. M. C. A. Cabinet, Basketball, K Club, Transferred from Emporia Teachers College.

VIRGINIA LEE FORD *Hays*
Public School Music
 Glee Club, Chorus.



FLORENCE SOLOMON *Ellis*
Art
 Reveille Staff, Y. W. C. A., W. A. A., Chorus, Art Lovers' Club, Life Saving Corps.

HUGH BURNETT *Tribune*
Political Science
 Reveille Staff, Y. M. C. A. Cabinet, Pi Kappa Delta, Tearin' Tigers.



LOUISE SIELING *Hays*
Public School Music
 Sigma Sigma Sigma, Chorus.

ALLEN ECORD *Oberlin*
Political Science
 Pi Kappa Delta, Y. M. C. A. Cabinet, Debate.

FRED HENNING *Smith Center*
Manual Arts

Y. M. C. A., Chorus, Commercial Club,
Football, Wrestling.

MRS. PANSY COOLBAUGH *Hays*
Mathematics

Chorus, Y. W. C. A., Girl Reserve.

CHARLES E. HAWKES *Hays*
Mathematics

Parliamentary Law.

LEO KOBLER *Penokee*
Agriculture

Sigma Tau Gamma, Y. M. C. A., Glee
Club, Chorus, Tearin' Tigers, Track, Band.





WITH THE FACULTY

Life is often stranger than fiction—Constance Dymond thought she was having a date with Dutch and about a week later she found out that she was with Johnnie.

Jerry—Mr. Malloy, you surely made a big hit at Great Bend; they thought you sang with complete abdomen.

Isabel M.—Aren't you going to tack the quilt?

Miss Stephen—Wen't tacks make holes in it?

Mr. Parker learned in a history test that all the Knights were supposed to have coats of nails.

Dr. Wiest (in Shakespeare class)—Let's see, Casca, who was Casca? Oh, yes, he is the man who invented cascarets, isn't he?

Why Burditt gets gray! News item handed in for The Leader.

A sick chicken is being studied by the biology class with a deformed liver.

Claudys (at Markwell's)—Do you have a Kansas City Star for a week back?

Steeples—No, but I think a plaster would be better anyway.



JUNIORS



CHARLEY KIMERER *Hunter*
Biological Science

EDNA FAYE BROWN *Weskan*
Commerce

CHARLOTTE BLENDER *Hays*
Commerce

ADDIE E. AIKIN *Hays*
Public School Music

ALMA ANDERSON *Galena*
English

FRANK L. ANDERSON *Oberlin*
Business Administration

DELMA GRUNDMEIER *Fairport*
Mathematics

ETHEL V. ARTMAN *Plainville*
Commerce

MELVIN L. GUMBLE *Plainville*
Commerce

CARRIE E. BOCHOW *Sylvan Grove*
Mathematics

HAROLD E. BOMGARDNER *Palco*
Music

BLANCHE GILMORE *Hays*
Commerce

NESSIE COLES *Hays*
English

ABRAHAM F. ADRIAN *Buhler*
History

HAZLE CALLISON *Garden City*
History

WAYNE RARDIN *Palco*
Mechanic Arts

OWEN CORWIN *Covert*
Mechanic Arts

NINA WILMOT *Almena*
Biological Science

JESSIE M. SHERROD *Goodland*
Journalism

HARRY BLACKWILL *Quinter*
Music





LEO V. WEDEL *Pawnee Rock*
Biological Science

FLORENCE M. WALLACE *Stockton*
Music

NETTIE LESLIE *Beloit*
Mathematics

PAUL HERGERT *Otis*
Business Administration

WAYNE JACKA *Arnold*
Manual Arts

MAUDE BARBER *Lincoln*
History

MILDRED KING *Hays*
Music

LUELLA DOWNING *Deerfield*
Literature

WENDELL BURDITT *Ness City*
English

DOROTHY DANIELS *Garfield*
Home Economics

JOE BRONSON *Bunkerhill*
General Science

ETHEL HURLOCK *Lincoln*
Commerce

ADA RUBY BROWN *Webster*
Home Economics

C. W. HENNING *Smith Center*
Science

ARTHUR LENTFER *Sylvan Grove*
Mechanic Arts

EDWINA McVEY *Great Bend*
Modern Language

VADA JEAN WHITTEN *Phillipsburg*
Home Economics

RUSSELL ANDERSON *Oberlin*
Science

VICTOR SEIBERT *Great Bend*
History

ELIZABETH ANNE WHITTEN *Phillipsburg*
Music





ORLAND EDGINGTON
General Science

McCracken

LELA THOMAS
Literature

Hays



GENEVIEVE LOVEJOY
Art

Almena

CLEMFORD KULP
Biological Science

Wa Keeney



HAROLD PORTENIER
Mathematics

Golden, Colo.

ROSA GIESS
Commerce

Arnold



BELVA JONES
Home Economics

Hill City

LLOYD S. STURTZ
Mechanic Arts

Youngwood, Pa.



JACK BROCKEL
Music

Redwing

WILDA OPDYKE
Biological Science

Hays

EARL LORBEER *Webster*
Mechanic Arts

R. FLORINE HOTZ *Dodge City*
Voice

BIRDIE RIEGEL *Hays*
Home Economics

W. WALLACE STEEPLES *Palco*
Manual Art

LAWRENCE BECKER *Logan*
Agriculture

OLIVE BLANCHAT *Syracuse*
Literature

ALCIDE RODGERS *Palco*
Manual Arts

VEDA VENNEBERG *Hays*
Commerce

VERNA FAE THOMAS *Hays*
Literature

OTIS ROGERS *Lucas*
Social Science





MRS. MAGDALENE WOODS *Greensburg*
Biological Science

DAVID MOSIER *Hoxie*
History

ELIZABETH GILMORE *Hays*
Commerce

ALTHA RICHARDS *Woodston*
Public School Music

MRS. STELLA MOORE *Alden*
Public School Music

BRYONIA PEARCE *Gove*
English

GEORGE NORTON *Cawker City*
General Science

MARIE BRAUER *Buhler*
Education

GEORGE MATHEWS *Towner, Colo.*
History

CAREY COLES *Hays*
English

MYRTLE ANDERSON *Oberlin*
Home Economics

EARLE TRAYLOR *Arnold*
Mechanic Arts

HOBART E. RADER *Plainville*
Commerce

CATHERINE SWEAT *Cedar*
Literature

CLAUDYS MILLER *Rush Center*
Literature

PAUL PARRISH *Asherville*
Manual Arts

IRA RHOADS *Hays*
Science

GLADYS BLENDER *Hays*
English

JOSEPHINE HUPFER *Bunkerhill*
Home Economics

ALEXANDER PHANNENSTIEL *Hays*
Commerce



THE GIRL RESERVE LEADERSHIP GROUP

THE Girl Reserve Leadership Group was organized in September, 1925, for the purpose of training leaders in girls' activities.

This group meets every other Tuesday morning, and is following as a course of study the organization and work of a high school Girl Reserve.

There is an ever-increasing need in Girl Reserve work for leaders who understand the problems of the high-school girl.

OFFICERS

<i>President</i>	Laura Nickel
<i>Vice-President</i>	Margaret Scott
<i>Secretary</i>	Pansy Coolbaugh
<i>Treasurer</i>	Vera Francis
<i>Program Chairman</i>	Carey Coles
<i>Social Chairman</i>	Edith Peck
<i>Service Chairman</i>	Flora Lemley
<i>Advisor</i>	Ethel Bowen
<i>In Facultate</i>	Emma F. Wilson

MEMBERS

Laura Nickel	Carey Coles	Goldie Proffitt
Margaret Scott	Edith Peck	Doris Sexton
Nessie Coles	Flora Lemley	Viola Stover
Pansy Coolbaugh	Ethel Bowen	Catherine Reynolds
Vera Francis	Pansa Cornwell	Mary Russell
Delma Grundmeier	Winifred Dudley	



SOPHOMORES



ESTHER ADAMS *Hays*
 LOKE SMITH *Bison*
 EVA MITCHELL *Hoisington*

ELDEN CURRY *Hays*
 TWILA CAMPBELL *WaKeeney*
 MARIE HOLLENBECK *Brewster*

FADONNA WRIGHT *Kinsley*
 DOROTHY ADAMS *Hays*
 ARCHIE LARUE *Woodston*

LURA LEE CONNER *McDonald*
 MEARLE HOOVER *Lyons*
 MARGARET DYCK *Buhler*

MARVIN BASTIN *Hays*
 JUANITA STEINLE *Dorrance*
 CLARA MCCOLLUM *WaKeeney*

THELMA BOYER *Salina*
 WINIFRED DUDLEY *Glen Elder*
 CLAY BROWN *Paradise*

MARGARET MOONEY *Hanston*
 SETH ARNOLD *Hays*
 HAZEL COUNTRYMAN *Formoso*

FAY GORDANIER *Randall*
 HAZEL BUCKMAN *Larned*
 CARMEN THERO *Carmen*

LOLA REINECKE *Great Bend*
 CHARLES HART *Randall*
 SARAH IFLAND *Hays*

WILLIAM TEAGUE *Collyer*
 ETHEL NEMEYER *Quinter*
 ALICE UNRUH *Pawnee Rock*

CLARENCE GLASS *Ellis*
 LEO EDGINGTON *McCracken*
 VERA D'ARLINE YORK *Garfield*

LILLIAN REINHARDT *Bison*
 LUCILLE FOOS *Garfield*
 EULA HAVERCROFT *Partridge*

NINA ALEXANDER *Copeland*
 G. LUTHER KISTLER *Bunkerhill*
 MARJORIE REINECKE *Great Bend*

JUANITA WILLIAMS *Hays*
 HAROLD TAYLOR *Randall*
 EUNICE GEROLD *Atwood*

LENORA McCULLOUGH *Belleville*
 JAMES NORTON *Cawker City*
 MARGARET RARICK *Hays*

VERA McCULLEY *Zurich*
 NETTYE SHIPLEY *Smith Center*
 ELGIN DENIO *Osborne*





MARIE KOBLER STEEPLES *Penokee*
 HUBERT E. LANDRY *Damar*
 EGLA STEINLE *Dorrance*

L. E. EICHMAN *Palco*
 KATHRYN KINMAN *Mankato*
 GERALDINE REINECKE *Great Bend*

ELIZABETH MAYNARD *Hays*
 MARIE GLASS *Ellis*
 LEE KIERNES *Downs*

ROBERT BRUNGARDT *Hays*
 LOLA LUTHER *Great Bend*
 HAZEL STRAILY *Hays*

EDITH GUMP *Garden City*
 EUGENE OATES *Minneapolis*
 BERTHA GRIFFITH *Hays*

DONALD RUSSELL *LaCrosse*
 ETHEL HOKE *Hays*
 LEONE W. MILLER *Salina*

EVERETT RUNYON *Hays*
 JULIA E. BENOIT *Clyde*
 MARGARET MACKENZIE *Agra*

ISABEL LOVEJOY *Almena*
 ARMAND LAFOND *Clyde*
 LORENA TIPTON *Minneapolis*

MABLE WALLACE *Lincoln*
 DOYLE BROOKS *Hays*
 GEORGIA PURMA *Grinnell*

MARIE SMITH *Kingman*
 MILBRUE PAGET *Covert*
 DOROTHY WICKMAN *Colby*

ROSALIND NOBLE *Hays*
 RUBEN ROMEISER *Timken*
 GRACE HENNING *Belpre*

JEAN BURROUGHS *Plainville*
 CAROLINE BILLINGS *Jetmore*
 FLORA ZIEBER *Pawnee Rock*

ADA BELLE RICH *Wa Keeney*
 ERMA SIEGRIST *Hill City*
 ARCHIE TAYLOR *Dresden*

MILDRED HENNINGSSEN *Gem*
 CORA HUDSON *Falun*
 VERA PRUTER *Natoma*

GLORIA LORENE BARTLETT *Plainville*
 NEIL DURHAM *Randall*
 ALICE ERICSON *Lindsborg*

RUTH MEYER *Bison*
 CLARENCE YOUSE *Bunkerhill*
 W. J. PEMBLETON *Palco*





ALBERT ROSS NICHOL *LaCrosse*
 MARY DOUBRAVA *Lorraine*
 WAYNE POWELL *Kirwin*

ZELMA SHAW *Canton*
 RAPHL IMLER *Horton*
 EVELYN BLOOME *Rexford*

GORDON B. SEKAVEC *Brownell*
 MRS. GLADYS STURTZ *Hays*
 LUTHER MUIRHEAD *Dresden*

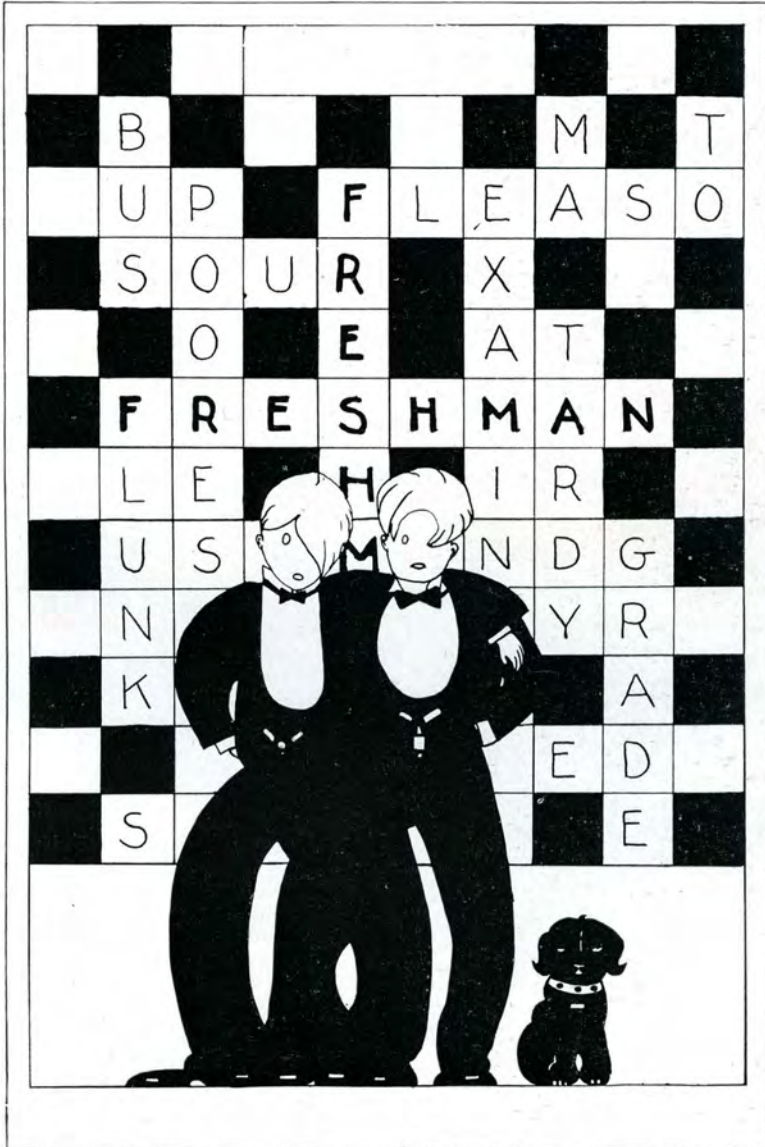
VIOLA MOE *Salina*
 HARRY KLEWENO *Bison*
 EDITH VAN PELT *Cover*

CARL WANASEK *Waldo*
 VERNA GILMORE *Nekoma*
 ELLA MILLER *Clafin*

DALE E. CLINE *Larned*
 COILA M. RICHARDS *Woodston*
 MARGARET MACKENZIE *Agra*

Freshmen:

LAURA SAUBERLI *Ellsworth*
 LOUISE BOWLUS *Russell*
 CHARLES W. MCCOY *Oakley*





ROLLEN NIPPS *Gretna*
 JOSEPHINE CUNNINGHAM *Morland*
 WENDELIN A. BROWN *Walker*

ROYALYNN MORT *Hill City*
 WALTER BOLLINGER *Utica*
 ESTHER ANNIS *Solomon*

VERNON MILLER *Altoona*
 HELEN FAIRCHILD *Bunkerhill*
 DALE KELLEY *Phillipsburg*

REBECCA HAIR *Brownell*
 ERNEST PEEL *Larned*
 ANNA M. DICK *Buhler*

ROBERT MOSIER *Hoxie*
 IRENE PFISTER *Pawnee Rock*
 GEORGE EICHMAN *Palco*

MARY JOHNS *Buhler*
 ROBERT BIRD *Hays*
 HELEN V. APPL *Bison*

DAVID BOLLINGER *Quinter*
 BEULAH KNISLEY *Logan*
 BERNIE FOSS *Garfield*

ESTHER BECHTOLD *Gaylord*
 LEONARD KASKY *Hunter*
 ERMA ARNOLD *Larned*

LETHA BISSITT *Bucklin*
 JOHN EICHMAN *Palco*
 CARROLL MURPHY *Glen Elder*

RUBY KELLER *Garfield*
 LELA COLE *Hays*
 WAYNE FOSTER *Ness City*

NAOMI E. CORK *Colby*
 HAROLD ANDERSON *Roxbury*
 VIOLA STOVER *Winona*

J. MAX BLAKELY *Ogallah*
 ALBERTA ROUNER *Luray*
 HAROLD PIXLEY *Osborne*

LELA MATTHEWS *Quinter*
 HESTER CRISSMAN *Hays*
 CLYDE NORTH *Utica*

LUELLA BOWMAN *Bushton*
 UPTON DAWSON *Goodland*
 IDA BRETZ *Lucas*

LUCY MAY GILL *Wallace*
 LORIN WHITNEY *Fairview*
 ALTA COURTNEY *Collyer*

RUTH HOGAN *Salina*
 ELSIE MAY SHIPLEY *Studley*
 ELSIE MANTZ *Jetmore*





HAROLD COPELAND *Hays*
 PANSA CORNWELL *Osborne*
 GRACE FRUSHER *Jetmore*

ELAINE KAY *Morland*
 ALICE WEIGEL *Victoria*
 MYRT BRONSON *Bunkerhill*

INEZ PARAMORE *Logan*
 ALBERT W. COPELAND *Hays*
 HELEN KELLER *Pierceville*

ISADOR STAAB *Hays*
 MARIE M. SAILOR *Wilmore*
 LOUISE BAIRD *Almena*

ROBERTA REED *Sharon Springs*
 JULIUS M. BAHL *Hays*
 BEULAH MOE *Salina*

ETHEL SHEARER *Hays*
 MARVIN BARROWS *Ness City*
 RENA ROUNER *Luray*

DON WILLIAMS *Monument*
 GWENDOLYN SCHULTZE *Natoma*
 DALE SIELING *Hays*

BEULAH SLAIGHT *Ellsworth*
 THOMAS WILLIAMS *Ransom*
 FLORENCE WALKER *Norton*

CHRISTINE HERL *Hays*
 BLAINE COOLBAUGH *Hays*
 PHYLLIS FISHER *Wilson*

ELDON H. BELL *Hays*
 ROSE TOWNS *Palco*
 LAWRENCE LEWIS *Hays*

ELSIE WRIGHT *Bushton*
 SIDNEY ZEIGLER *Codell*
 FAYE STEIGER *Mento*

MYRON ELMER ASKEW *Utica*
 LELA CASTER *Oberlin*
 HOBART JACKSON *Augusta*

PRISCILLA WILSON *LaCrosse*
 CLARENCE O. DEIGHTON *Rush Center*
 GLADYS HAYES *LaCrosse*

FRANK PLOUSSARD *Oberlin*
 CATHERINE REYNOLDS *Grainfield*
 HENRY KARLIN *Hays*

ALICE WOHLER *Sylvan Grove*
 HOWARD BAKER *LaCrosse*
 RUTH JANICE HATFIELD *Wichita*

LEWIS WHITE *Smith Center*
 CONSTANCE DYMOND *Great Bend*
 CHARLEY GISH *Palco*





DOROTHA L. FISHER *Selden*
 ALBERT WARNER *Ellsworth*
 WILABOUR HARDY *Bucklin*

MOLLIE M. WAGNER *Bison*
 HAROLD R. KIMERER *Hunter*
 FANNIE COOLEY *Selden*

BINNIE MORRIS *Hays*
 FLOYD CARTER *Kipp*
 EMILY JANE FRUSHER *Jetmore*

ELLA SVATOS *Pawnee Rock*
 RICHARD BOWMAN *Pawnee Rock*
 MARGARET SMITH *Rozel*

HARRY GLASS *Alloona*
 TRINNY E. SMITH *Burr Oak*
 GLADYS WRIGHT *Bushton*

RUTH MOORE *Stockton*
 VIVIAN NELSON *Sharon Springs*
 SYLVENUS J. WASINGER *Collyer*

HELEN MORRIS *Barnard*
 LAWRENCE ROMEISER *Timken*
 ELIZABETH LAMBERT *Sylvan Grove*

LEWEIS GRUNWALD *Hutchinson*
 VALRIE WIRUTH *Cuba*
 HARLAN S. LIPPERT *Bison*

ELBERT MACY *Woodston*
 LOIS V. STEWART *Goodland*
 ERMA TORREY *Hays*

GLADYS HELEN HOFFMAN *Brownell*
 MAE PATTERSON *Rozel*
 JEANETTE SMITH *Oakley*

WALDO WICKIZER *Hays*
 VELMA KIRKPATRICK *Great Bend*
 CONSTANCE C. COMSTOCK *Scott City*

SHIRLEY BOYER *Salina*
 CLYDE SMITH *Bison*
 EDWARD CAIN *Hays*

MELVIN TORREY *Hays*
 LUCY COLE *Hays*
 PAUL R. CLARK *Augusta*

EDNA MARIE BROWN *Burr Oak*
 JOHN LOCKE *Covert*
 JESSIE M. WILSON *LaCrosse*

ELMER SCHULKE *Pawnee Rock*
 LEROY PEMBLETON *Palco*
 ERBA HARBAUGH *Russell*

HELEN FELIBLE *Stockton*
 HELEN ELIZABETH HOCH *Hays*
 JAMES ANDREWS *LaCrosse*





BEULAH DIXON *Kinsley*
 MAURICE NETHERLAND *Hays*
 LUCILLE THORNBURGH *Dodge City*

JACK COOLBAUGH *Hays*
 RUTH MOORE *Stockton*
 IRENE VAN PELT *Covert*

ARMINA WASINGER *Hays*
 JOY HUTTIE *Hays*
 EDMUND SCHLEGEL *Rush Center*

LOUISE HOLMAN *Hays*
 PAULMER SAWYER *Monument*
 JAMES LESTER *Grantville*

J. ROYAL CORK *Colby*
 SARA A. MEAD *Hutchinson*
 FREDA GLASS *Ellis*

GOLDIE REIFF *Russell*
 HERBERT DRAKE *Rozel*
 MABLE L. LA RUE *Woodston*

CORDA LEONARD *Harlan*
 LILLIAN BURDITT *Ness City*
 BEN SEUSER *Bison*

CLARA NEVE *Bison*
 HELEN KADEL *Scottsville*
 BERNARD ROTH *Hays*

LUCY ROURKE *Brownell*
 GAYLE RYAN *Brownell*
 AVIS PFISTER *Pawnee Rock*

OTTO KOBLER *Penokee*
 VIVIAN RIEGEL *Hays*
 HELEN CURRIE *Larned*

EDNA COOK *Bucklin*
 LOUISE TIMKEN *Bison*
 WILLIAM BARTLETT *Plainville*

KIZZIE RENNER *Rush Center*
 R. FRANK DAZEY *WaKeeney*
 GENEVIEVE STULL *Palco*

HAROLD HISEY *Lenora*
 RUTH BODMER *Waldo*
 GEORGIA CARLILE *Montezuma*

DORA LEE WALKER *Rozel*
 LUCILLE BUENNING *Salina*
 JESS BOEHNER *Downs*

MILDRED LEE *Hays*
 HERBERT JOHNSON *Minneola*
 GLENNIS COMPTON *Larned*

JOE MAHONEY *Bunkerhill*
 OLIVE GRACE VALEK *Cuba*
 ESTHER E. RAIRDON *Havensville*





MOLLIE M. WAGNER *Bison*
 HILLAND H. STEWART *Palco*
 HELEN C. MALCOLM *Almena*

THEODORE ROTHE *Bison*
 MILDRED SHORTER *Fowler*
 MINNIE R. UNRUH *Buhler*

MAY JAMES *Deerfield*
 BERTHA ROTHE *Bison*
 EARL DUNDAS *Colby*

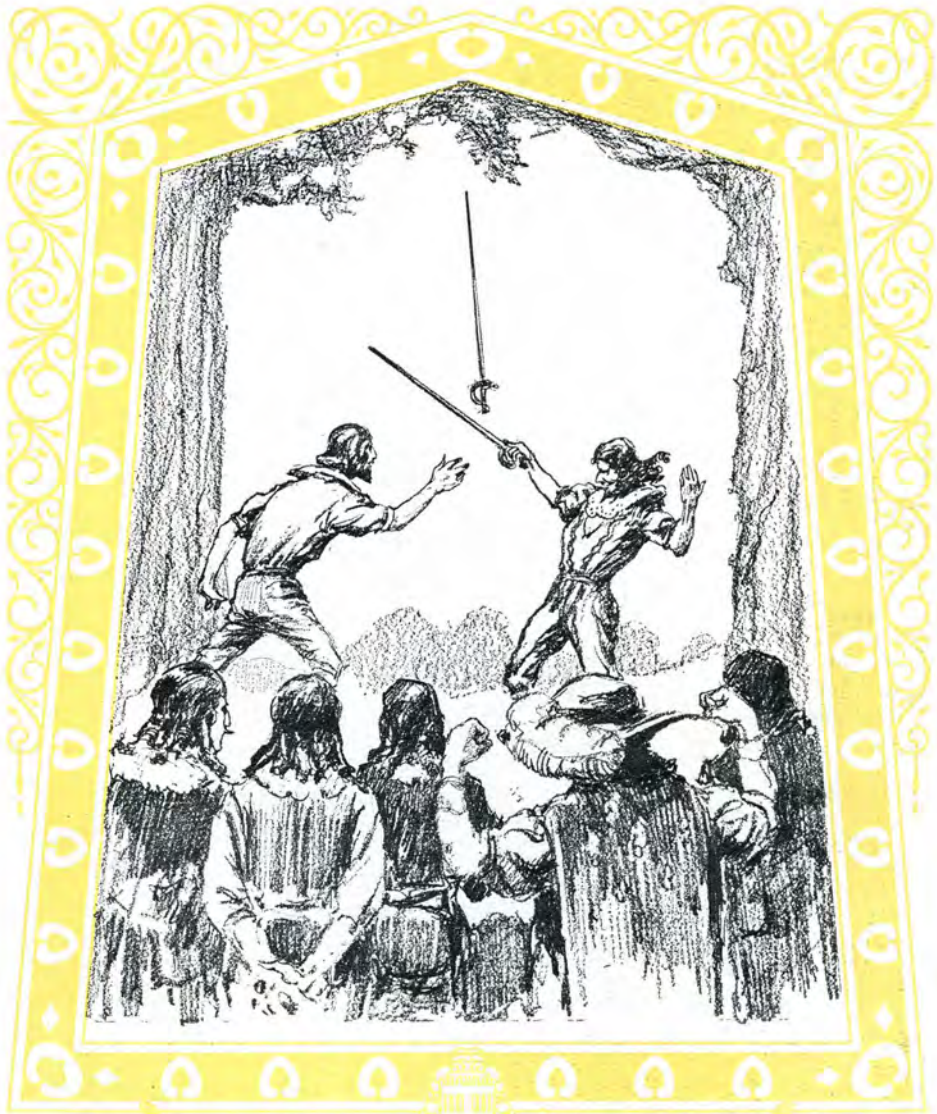
EVA JOHNSON *Minneola*
 PAUL B. TILLEY *Bethany, Mo.*
 GUILA DESBIEN *Palco*

BERT BERGLAND *Loomis, Neb.*
 VEVA IMEL *Bucklin*
 LOIS A. GRIPTON *Smith Center*

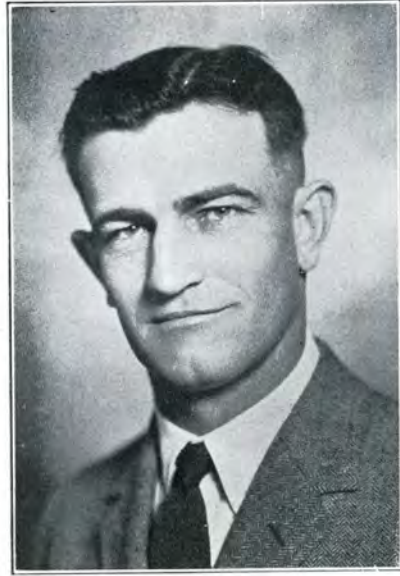
MABEL BRADY *Albert*
 VICTOR PADGETT *Junction City*
 FLORENCE B. WRIGHT *Russell Springs*

BLANCHE BARTA *Lorraine*
 ELMER SCHLEGEL *Hays*
 MARGARET CAIN *Hays*

ALBERT HAWKES *Hays*
 HAZEL DAVIS *Studley*
 GERTRUDE ANGELL *Portis*



ATHLETICS



“BILL” AND “MANDY”

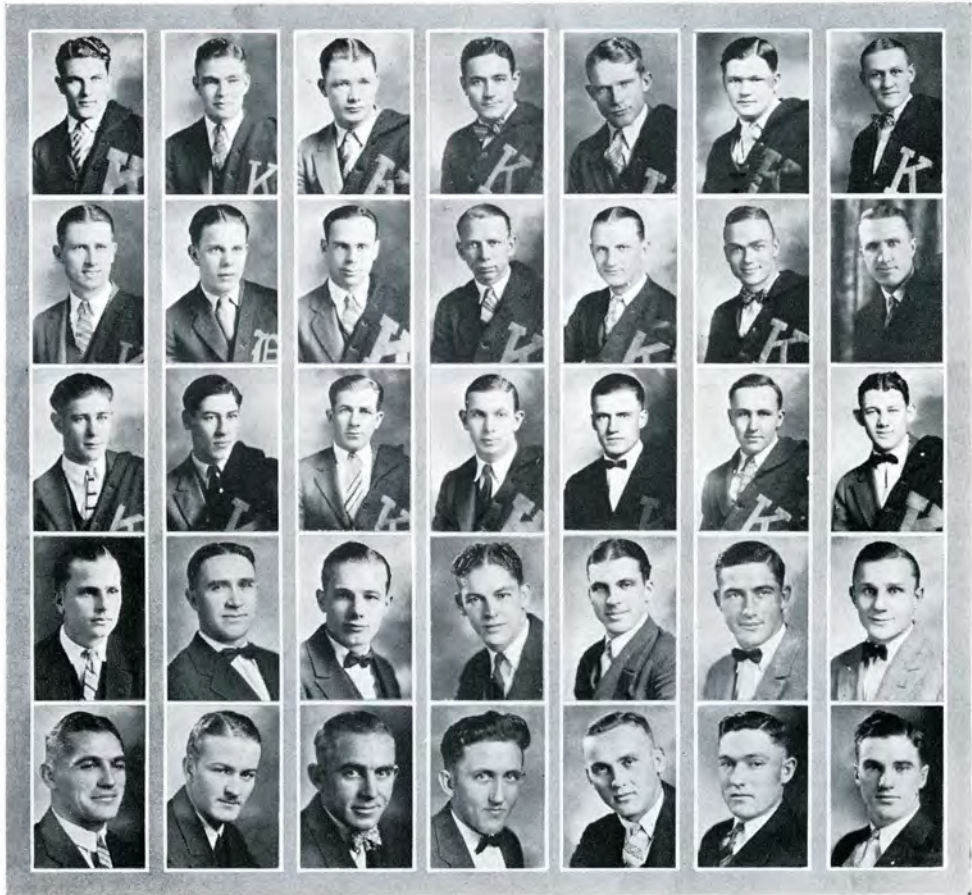
W. D. WEIDLEIN, “Bill,” is the football coach at K. S. T. C., coming to Hays in 1921. He made a name for himself while attending K. U., capturing three K’s in football and two in basket ball. He also was chosen captain of the all-Missouri football eleven.

“Bill” has developed a fighting machine at Hays which often forces consideration from other members of the Kansas Conference. With much new material on hand, we feel sure that “Bill” will make the Tiger an animal much to be dreaded in 1927.

F. P. MANDEVILLE, also a Jayhawker, is director of athletics and also basket ball and track coach. “Mandy” has aroused much interest in intramural athletics this year, besides training a squad of Tiger basketeers.

He had great success in track last year and appearances point to victories again.

“Bill” and “Mandy” receive the hearty support of faculty and students in all athletic work.



MCVEY, CHRISTENSEN, ROGERS, RHOADS, RIEGEL, DIXON, HERGERT
 WHEAT, OSBORN, MCFERRIN, LORBEER, BECKER, MOSIER, F. ANDERSON
 CLAIBOURN, BURCHETT, HART, ENOS, R. ANDERSON, CLARK, DEWALD
 A. ANDERSON, WOODS, KLEWENO, BRONSON, RODGERS, OATES, TRAYLOR
 PORTENIER, DEWS, MUIRHEAD, BASTIN, GRISWOLD, PEMBLETON, HINKHOUSE

K CLUB

OFFICERS

<i>President</i>	FRANK ANDERSON
<i>Vice-President</i>	BURR DEWALD
<i>Secretary-Treasurer</i>	JAMES BURCHETT

FOOTBALL





"Dutch"

1927 SCHEDULE

Sept. 24—Aggies at Manhattan.
Oct. 1—Antelopes at Kearney.
Oct. 8—Emporia at Emporia.
Oct. 15—Sterling at Hays.
Oct. 22—St. Marys at Hays.
Nov. 4—Kansas Wesleyan at Salina.
Nov. 11—Bethany at Lindsborg.
Nov. 19—Pittsburg at Hays.



HIGHLIGHTS ON THE 1926 FOOTBALL SEASON

THREE times only during the series of eight gridiron games was it possible to write the words "Hays won;" but most of the losing scores were close.

The Tigers led out with a 53 to 0 victory, on Oct. 2, at the expense of the Kearney, Nebraska, Antelopes. This was a non-conference game for both teams. When the Tigers met their own conference teams they found it much harder to sharpen their claws on the goal posts.

On Oct. 8, a swarm of Yellow Jackets from Emporia invaded the Tiger lair and got away with the worth-while end of a 14-0 score. A Tiger half, Portenier, left the field early in the first quarter with a broken leg. Before the Tigers could get their line-up well arranged again, the Emporians rang in two 7's, making the score 14-0 at the half; but the Tigers held their goal line free for the remainder of the game.

The Tigers journeyed to Sterling for a game on Oct. 15, and, much to the surprise of the Tigers, Sterling won by a place kick from the 33-yard line in the fourth quarter. Neither team had scored until that time, and thus the score stood at the final gun. During the whole game the Tigers made larger gains from scrimmage than did the Sterling squad.

Great rejoicing entered the Tiger camp on Oct. 21, because, for the first time in nine years, the Tigers carried off a victory on the St. Marys court. This game was received play-by-play by telegraph at the Hays College Auditorium. A Tiger goal in the last minute of play changed a 9-7 St. Marys game into a 13-9 Hays Tiger feast.

THE SWEDES from Lindsborg came for a visit on the Hays grid-iron Oct. 29, taking home the heavy end of a 11-0 score. The Swedes scored first as the result of a long pass. Later, when they carried the ball into the danger zone, the Tigers held them and forced them to attempt field goals.

The annual Homecoming game was staged with the Wesleyan Coyotes on Nov. 5. The Tigers came in with the two-digit end of a 14-9 score. The Coyotes scored in the first quarter but failed to kick goal. In the second quarter the Tigers planted two 7's in the score book. Neither team scored in the third quarter, but the Coyotes, by a place-kick, raised their count to 9 before the game closed.

Armistice Day found the Tigers in battle with the Wheat-shockers at Wichita University. The game was characterized as slow playing by both teams. Again the students at Hays received the game by telegraph, but were disappointed by a 7-0 Tiger loss.

On Thanksgiving Day the Tigers tried their claws on the Pittsburg Gorillas. After holding the score 0-0 until the last few minutes of play, the Tigers lost track of Pittsburg's criss-cross play, so that the Gorillas got away for a 7-0 victory.

Although the Tigers did not win many games, the low scores of their opponents and much promising new material put hope into the Hays football fans for a better season next year.





IRWIN McVEY, *Captain*
Fullback, age 23

Senior Lucas, Kansas
Weight 160 4 years Varsity

Mack met fully the expectations of his team-mates as captain. He was always on the job cheering his men and fighting even though luck refused to be with the Tigers. Turkey Day saw the end of his Tiger career.



PAUL HERBERT, *Capt-elect.*
Tackle

Junior Otis, Kansas
Weight 185 2 years Varsity

You know what he is, as the boys chose him to lead the Tiger campaign next fall. He says he'd rather play football all day than make a one-minute speech. Incidentally, we believe it.





JAMES BURCHETT
Quarterback, age 25

Senior Oberlin, Kansas
Weight 141 3 years Varsity

Jimmie likes to play football, and makes the other fellow like it too. He showed what he could do when at St. Marys last fall.



ANDREW RIEGEL
Halfback, age 23

Senior Ford, Kansas
Weight 141 2 years Varsity

He's one of those mighty, little Tigers. Cares not if he has to run the length of the gridiron to make a goal. He's from Ford, and when he has the pigskin under his arm, a Ford isn't in it for a race.





SHERWIN GRISWOLD
End, age 22

Senior Rossville, Kansas
Weight 180 2 years Varsity

Although shifted from his old position as guard, he never let a man get by. The squad is counting on his help next fall, as he does not get his degree until the end of the fall semester.



IRA RHOADS
Center, age 21

Junior Hays, Kansas
Weight 178 3 years Varsity

With three years regular on the eleven he has shown his worth. None got through center with Dusty there.





BURR DEWALD
Halfback, age 22

Junior Smith Center, Kansas
 Weight 148 3 years Varsity

Another of those fleet-footed Tigers. Burr is his name and when he gets the oval he hangs on like a cockle-burr. We are expecting Burr to show the Tiger fight again next fall.



ELDRED DIXON
Guard, age 20

Junior Rush Center, Kansas
 Weight 200 2 years Varsity

He was a tower of strength in the line and a guard any coach in the West would be proud of.





FRANK ANDERSON
Quarterback, age 26

Senior Oberlin, Kansas
Weight 150 3 years Varsity
Hard work is what he likes, and he works hard for the Tiger squad.



BYRON ROGERS
Guard, age 22

Junior Jennings, Kansas
Weight 160 2 years Varsity
He was one of the reasons they say,
"A Tiger can't be whipped."





HAROLD PORTENIER
Fullback, age 24

Junior Golden, Colorado
Weight 190 1 year Varsity

His worth as fullback was shown fully. But he had the misfortune of breaking his leg in the clash with Emporia Teachers.



DAVID MOSIER
Tackle, age 21

Junior Hoxie, Kansas
Weight 184 1 year Varsity

He was one of the hardest workers the team had. The results on the field showed it, as he was always in shape.





ALCIDE RODGERS
Tackle, age 22

Junior Palco, Kansas
Weight 210 1 year Varsity

One of the Tigers who fights all the time and has a physique that can take punishment. We hope he will arrive for his old stall next fall.



LUTHER MUIRHEAD
End, age 20

Junior Dresden, Kansas
Weight 163 2 years Varsity

An end which the Tigers never need be ashamed of. He always met his opponent half way.





EARLE TRAYLOR
Halfback, age 21

Junior Arnold, Kansas
Weight 160 1 year Varsity
After battling for two years he made the Varsity squad. Although light, he held up his share.



EARL LORBEER
End, age 20

Junior Webster, Kansas
Weight 153 1 year Varsity
Persistence wins as is shown by the way he trained his toe.



PAUL CLARK
Quarterback, age 18

Freshman Augusta, Kansas
Weight 201 1 year Varsity
One high school boy he is who lived up to the things we expected of him because of what his coach, a former Hays Tiger, said of him.



ERNEST HART
End, age 24

Junior Webster, Kansas
Weight 166 1 year Varsity
This is the second year that Hart has made the Tiger squad. As an end he let few men pass.

ROLLINS AN-GOVE SEABURY, the director of the Hays Concert Band, which is one of the finest bands in western Kansas, is a man to whom we all owe a great deal of gratitude and appreciation. It is for only a few of us to understand and appreciate the trials, temptations, and hard knocks of a bandmaster. Mr. Seabury, however, has been equal to all of the hardships that have come up, and, in the five years he has been with us, he has put forth every effort possible to build up this organization and to make it approach the goal which he has set for it. In athletic events and in other activities as well, his band has been of valuable assistance, and when he is called upon to serve in a worthy cause, he does it with utmost enthusiasm and sincerity of purpose.



ROLLINS AN-GOVE SEABURY
Director of College Band

HAYS CONCERT BAND



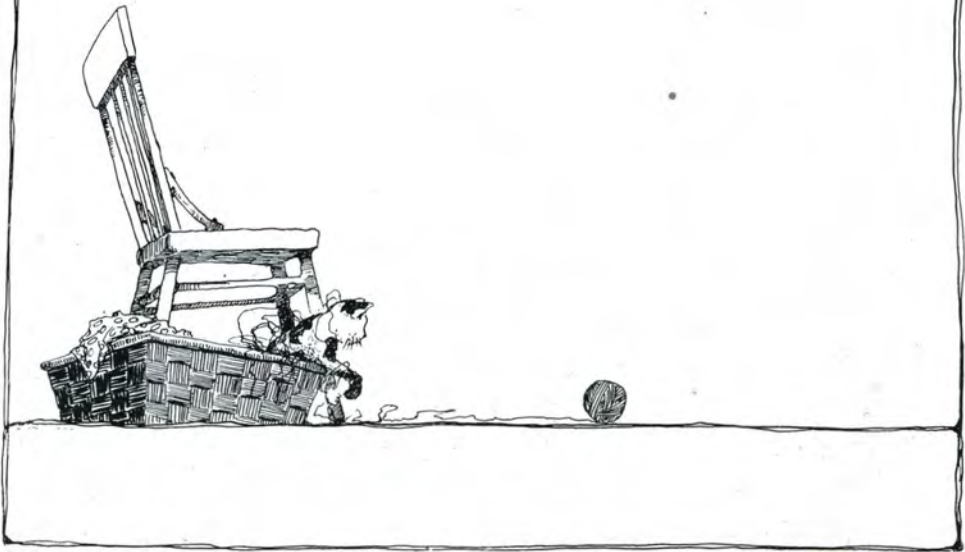
TELEGRAPH DEPARTMENT



CODY COMMONS



BASKETBALL



1927 BASKET BALL SCHEDULE

January	7	Kearney.....	16	at Hays.....	46
January	8	Kearney.....	19	at Hays.....	23
January	20	Hays.....	44	at Sterling.....	28
January	21	Hays.....	21	at Bethany.....	40
January	28	Wesleyan.....	22	at Hays.....	23
February	4	Friends U.....	31	at Hays.....	39
February	5	Friends U.....	25	at Hays.....	22
February	10	Hays.....	19	at St. Benedict's.....	25
February	11	Hays.....	32	at St. Mary's.....	48
February	12	Hays.....	33	at St. Mary's.....	41
February	18	Hays.....	20	at Pittsburg.....	28
February	19	Hays.....	20	at Pittsburg.....	24
February	21	Hays.....	18	at Salina.....	19
February	25	Sterling.....	29	at Hays.....	24
February	26	Sterling.....	18	at Hays.....	28
March	4	St. Mary's.....	26	at Hays.....	25
March	5	St. Mary's.....	15	at Hays.....	20

The 1927 basket ball season for the Tigers was one of many ups and downs. Eight of the seventeen games were Tiger victories. The season closed with a decided UP when St. Mary's went home with the light end of a 15 to 20 score.

The Tigers opened the season by inviting the Kearney Antelopes into the Tiger liar for two trouncings. The first, on Jan. 7, was Tiger meat at 16 to 46, and the second, on Jan. 8, at 19 to 23.

The next week the Tigers visited two of their old cronies, the Barrelnmakers at Sterling and the Swedes at Lindsborg. Sterling fell victim to a Tiger score of 44 to 28 on Jan. 20, but the next night, Jan. 21, the Swedes buried the Tigers under a 40 to 21 score.



REVIEW OF SEASON

THE Coyotes from Salina came to Hays on January 28, only to have the Tigers give them the worthless end of a 22 to 23 score. The score was tied 20 all at the end of the regular playing period, but in the five-minute playoff, Hays got a one-point lead.

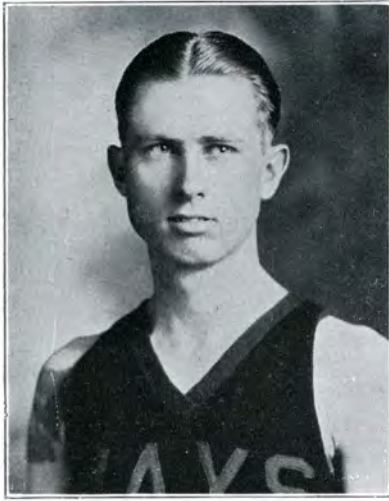
February 4 and 5 found Friends U. visiting the Tiger den. During the visit they dropped one game into the Tiger book at 39 to 31. The second game was the property of Friends who bid 25 to the Tiger 22.

The Tigers took a three-day jaunt to the east again beginning February 10, but dropped three games. The first went to St. Benedict's at 25 to 19. For the first time in four years the Irish captured a brace from Hays on the St. Mary's court, winning the first 48 to 32 and the second 41 to 33.

Unexpectedly, the Tigers were called on to change their schedule so that they went to Pittsburg instead of the Gorillas visiting Hays. They tried the Gorillas for two games on January 18 and 19. Both were Gorilla meat, one at 20 to 28 and the other 20 to 24. On the way home the Tigers stopped for a clash with the Coyotes at Salina. The score stood 18 to 19, Salina winning by a free throw.

The Sterling clan returned the Tiger visit with a two-game clash on February 25 and 26. The first game went to Sterling for 29 to 24, but the following night the Tigers turned the tables and cleaned house for a 28 to 18 score.

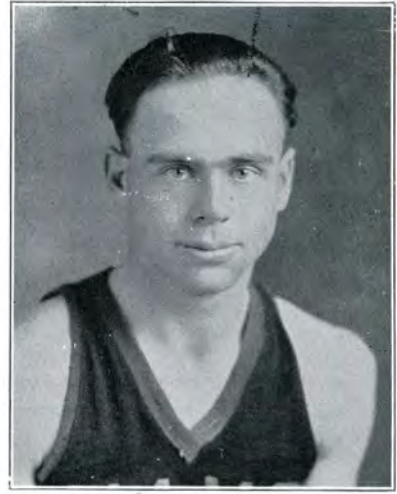
March 4 and 5 saw two of the hottest games of the season, on the Hays court. St. Mary's came in with a one-point lead in a 25 to 26 game the first night; but the following evening the Tigers opened up with heavy artillery as the first whistle blew and carried the score 20 to 15 at the end. Four Tigers, captain Wheat, Hinkhouse, McFerrin, and Woods wore the Tiger coat-of-mail that night for their final college tilt.



KENNETH WHEAT
Captain, Forward

Senior LaCrosse, Kans.

Wheat finished his four years as a Tiger on forward on March 5. He leaves a reputation of giving his team his best at all times.



WALTER MCFERRIN
Guard

Senior Oberlin, Kans.

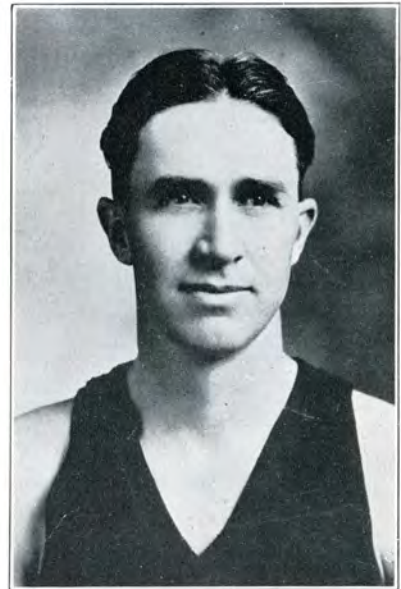
What a balance-wheel is to a watch, Mack was to the Tigers. He was always at his post working for the team, putting four stripes on his sweater thereby.



MARVIN BASTIN
Guard

Sophomore Hoxie, Kans.

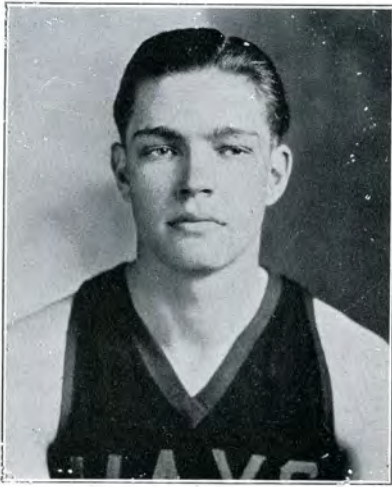
Bastin is the Tigers' pride as guard. Edmonds chose him for his Hays all-time team and also for the second all-state team of 1927. We hope he'll fill his berth in 1928. Bastin was high-point man, scoring 94 points in 1927.



B. Z. WOODS
Guard

Senior Greensburg, Kans.

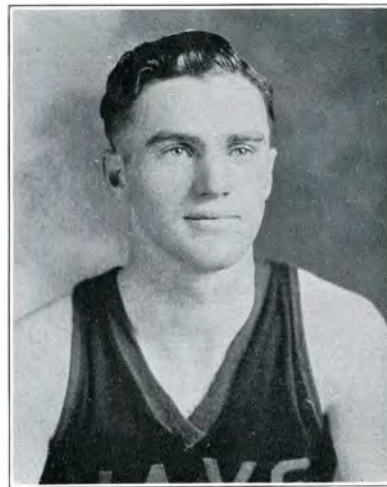
Woods filled his place two successive years. His goal from mid-court at Pittsburg was one of the bright spots in the 1927 season.



PAUL CHRISTENSEN
Center

Junior Brewster, Kans.

His opponent must go high if he tips the ball. Paul also takes his share of the jolts as they come.



DARREL HINKHOUSE
Forward

Senior Palco, Kans.

"Hink" won three stripes during his career as a Tiger cager. He is known as one of the best Hays floor men.



HOBART JACKSON
Forward

Freshman Augusta, Kans.

He's a member of Les Edmond's midget team, but he's no midget when it comes to playing real basketball. He scored 73 points, placing as second high-point man. We're counting on Jack for 1928.



HARRY KLEWENO
Center

Sophomore Bison, Kans.

"Squirrel" gets there and gets away. He was a good consistent player who always delivered the goods.



EARL LORBEER
Forward

Junior Webster, Kans.

Johnny works the floor and his opponent with a right good will. He's a steady player with a good basket eye.



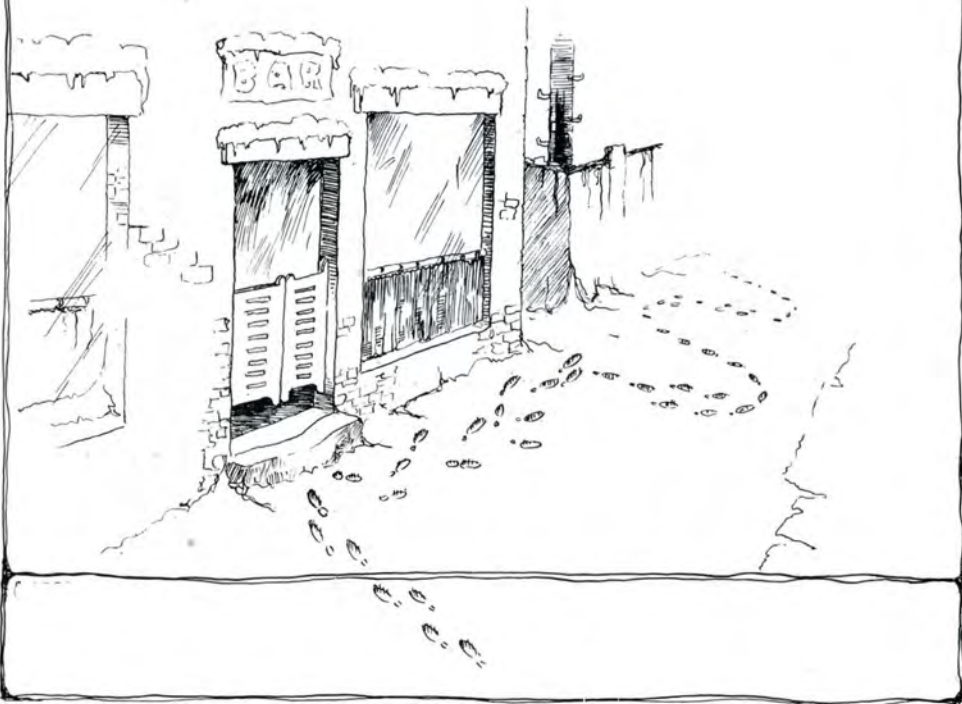
ALCIDE RODGERS
Guard

Junior Palco, Kans.

He plays the floor with ease, making his opponent like it as well as he does.



TRACK-



1927 TRACK SCHEDULE

- April 6—Bethel at Hays.
April 8—Triangular meet at Lindsborg between Hays, Bethany, and McPherson.
April 16—Kearney at Kearney, Neb.
April 22—Wesleyan at Hays.
April 22-23—High school track, tennis, and wrestling meet at Hays.
April 30—Hexangular at McPherson.
May 13-14—State meet at Baker College, Baldwin.

The 1926 track season was one of non-defeat for the Hays Tigers. The Hexangular meet at Sterling was the deciding point. The Tigers won over the five other schools, Bethel, McPherson, Wesleyan, Sterling, and McPherson, by 45 and 5-6 points. Kleweno made a record javelin throw of 186 ft. 6 in., also.

Two other victories were scored, one over the Antelopes from Kearney, Neb., and one over the Wesleyan Coyotes.

Several of the boys are working out for javelin throw, pole vault, and discus.

Prospects for 1927 track are good, there being seven of last year's letter men back and much new material showing up.



BURTON OSBORN

Captain

Senior Gove, Kan.

Osborn is a conscientious worker. He runs the quarter, the half, and is a strong point in the relay team.

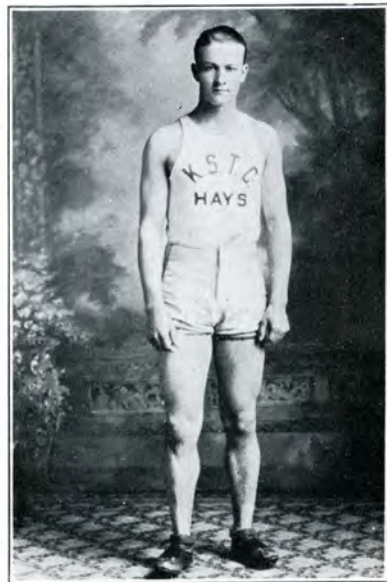


BRADEN CLAIBOURNE

Junior Bridgeport, Kan.

He gets away like a Kansas wind on the 100 and the 220-yard. As relay man he carries his end well.

Page 89



CARL DEWS

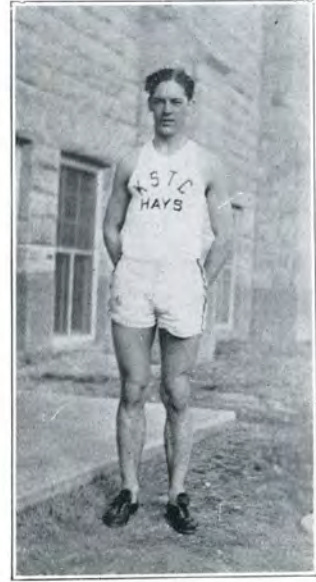
Junior Topeka, Kan.

Dews is another whirlwind Tiger, taking the 100 and 220-yard at a fine clip.



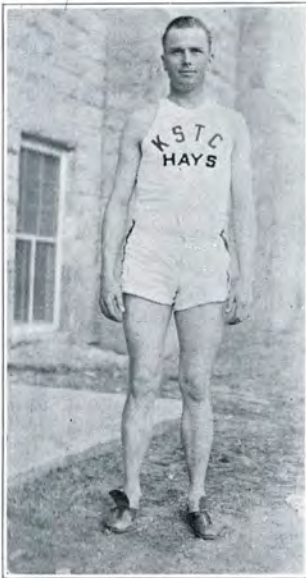
HARRY KLEWENO

Sophomore Bison, Kan.
 Harry made a record for himself with the javelin last year, hurling it 186½ feet. He also did good work with the discus and pole vault.



JOE BRONSON

Junior Bunker Hill, Kan.
 Joe is one of those "diversified" Tigers. He works the hurdles, both high and low, is a good man on the pole vault, and takes his turn in the relay.



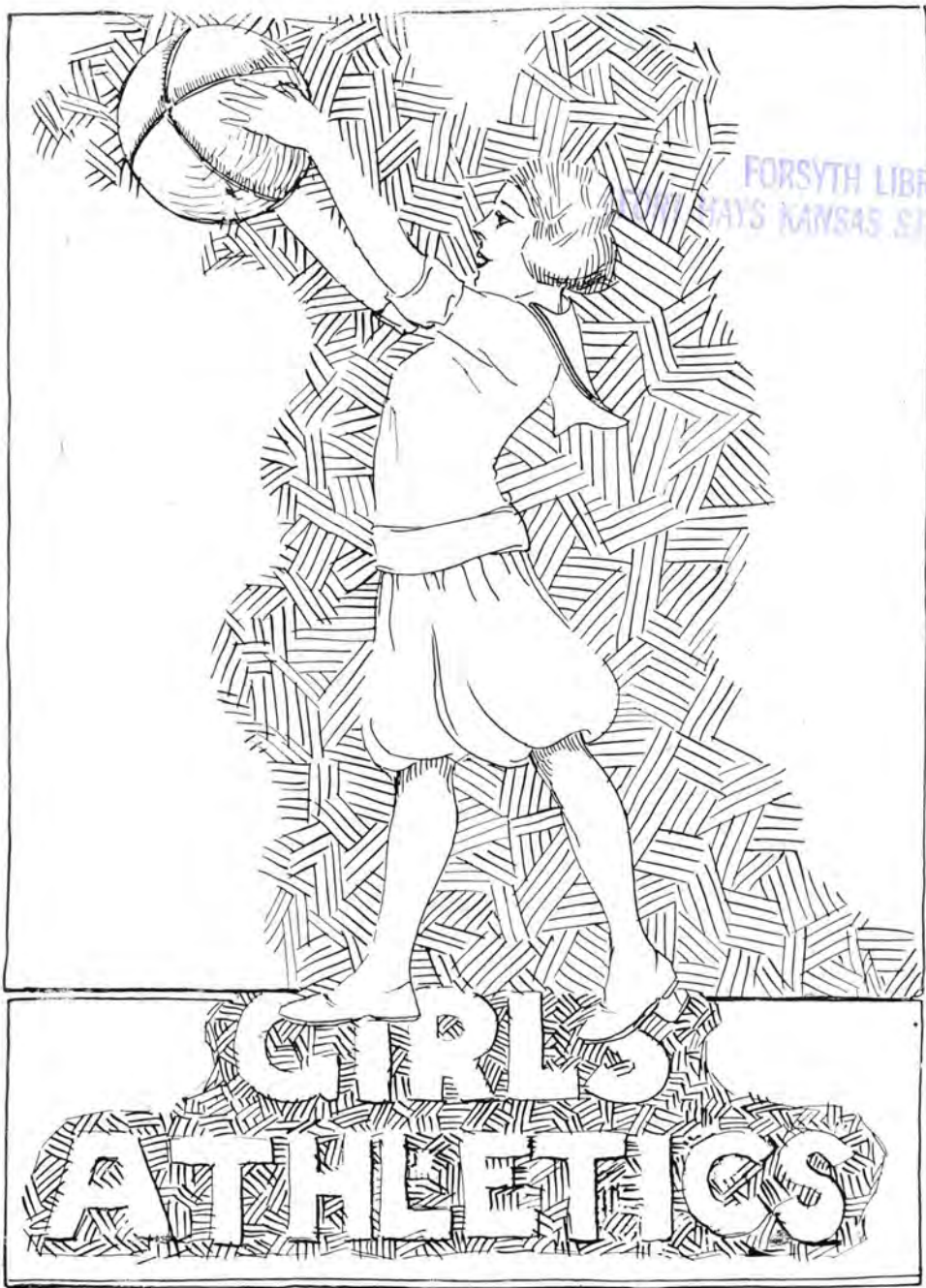
ADOLPH ANDERSON

Sophomore Osage City, Kan.
 He's a big, long Tiger and does work equal to his size. His main points are high hurdles and high jump.



EUGENE OATES

Junior Minneapolis, Kan.
 Oates gave a good account of himself in the quarter-mile and relay. He dropped a steel locker on his foot this spring which halted temporarily his track training



FORSYTH LIBRARY
WYOMING KANSAS STATE COLLEGE



MILDRED STEPHEN



GERTRUDE COLE

WOMEN'S ATHLETICS

MISS MILDRED STEPHEN, Director of the Department of Physical Education for Women, received her training at the University of Oregon.

Miss Gertrude Cole, Assistant Director of Physical Education for Women, is a graduate of the University of Wisconsin.

Although this is their first year on this campus, they have done much to further the interests of women's athletics, through their interest and co-operation.

The Women's Athletic Association will always feel indebted to Miss Stephen and Miss Cole for whatever success has been achieved this year.

JUNIOR-SENIOR SOCCER TEAM



ALLBERT, HOWE, BROWN, DESBROW
F. HURLOCK, DAVIES, BLENDER, KING, SHEARER
DOWNING, E. HURLOCK, ARTMAN

LIFE-SAVING CORPS



IVAN, COLE, DAVIES
OSKINS, SHEARER, SOLOMON, HOWE, ALLBERT



W. A. A.

BLOOME, A. BROWN, RIEGEL, REIFF, FRUSHER, COOLEY
 SHORTER, SMITH, HOWE, WRIGHT, SHEARER, HOGAN
 HARBAUGH, COMPTON, KELLER, PAGET, E. M. BROWN, CASTER
 BOYER, E. F. BROWN, UNRUH, MOONEY, BARTA, McCULLOUGH



W. A. A.

ALLBERT, BODMER, VEVERKA, HOKE, HOCH, STRAILY, DAVIES
 CONNER, HAVERCROFT, SAILOR, ARTMAN, VALEK, TEAGUE
 SLAUGHT, BLENDER, F. HURLOCK, DOUBRAVA, SOLOMON, RUSSELL
 E. HURLOCK, HUDSON, FISHER, JOHNSTON, KAY, SPENCER

SOPHOMORE SOCCER TEAM



BROWN, BLOOME, BOYER, SHORTER, UNRUH, DOUBRAVA
HOCH, HOKE, WRIGHT, HUDSON
PAGET, McCULLOUGH, HENNINGSEN, MOONEY

FRESHMAN SOCCER TEAM



FRUSHER, KAY, FISHER, SAILOR, COOLEY, HARBAUGH, REIFF, VALEK, CASTER, SLAIGHT,
SMITH, COMPTON, KELLER

Favorites ~





Eula Havercroft



Lois Northrup.



Mildred Lee



Emma Lovene Bartlett



Edwina M. Vey



Vera D'Arline York.

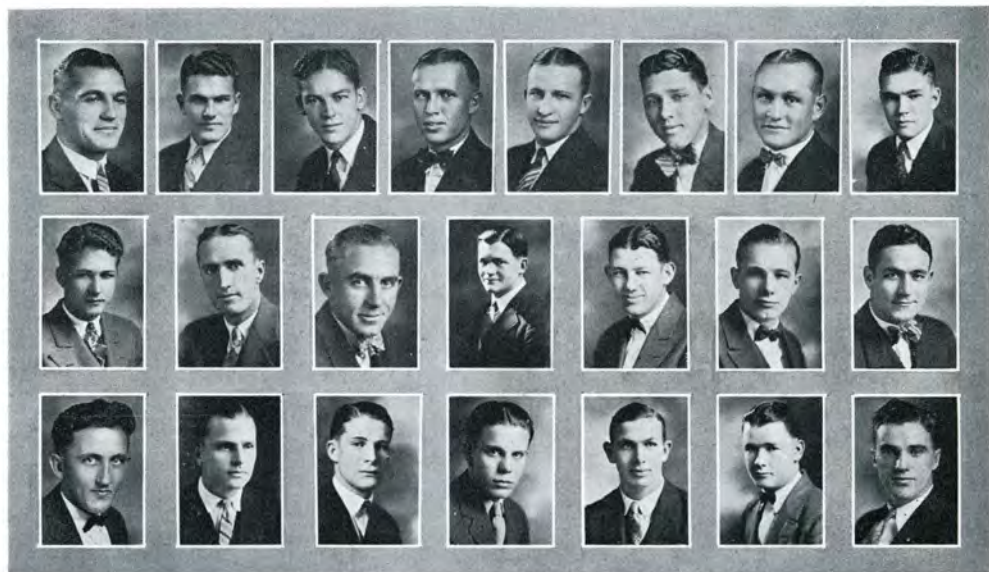


ORGANIZATIONS

SORORITY



FRATERNITY



PORTENIER, McVEY, BRONSON, GISH, ANDREWS, POWELL, HERGERT, CHRISTENSEN
 COOLBAUGH, F. ANDERSON, MUIRHEAD, DIXON, DEWALD, KLEWENO, RHOADS
 BASTIN, A. ANDERSON, TIMKEN, OSBORN, ENOS, ROGERS, HINKHOUSE

KAPPA PHI ALPHA

Organized 1923
 State Charter, December, 1923



Colors—Purple and White
 Flower—Sweet Pea

Seniors

IRWIN McVEY, Lucas FRANK ANDERSON, Oberlin BURTON OSBORN, Gove

Juniors

HAROLD PORTENIER, Golden, Colo. JOE BRONSON, Bunkerhill PAUL HERGERT, Otis
 BURR DEWALD, Smith Center IRA RHOADS, Hays JOE TIMKEN, Bison
 BYRON ROGERS, Jennings DARRELL HINKHOUSE, Palco PAUL CHRISTENSEN, Palco

Sophomores

LUTHER MUIRHEAD, Oberlin ELDRED DIXON, Rush Center HARRY KLEWENO, Bison
 MARVIN BASTIN, Hoxie ALLEN ENOS, Perry ADOLPH ANDERSON, Osage City
 WAYNE POWELL, Kirwin

Freshmen

CHARLES GISH, Palco JAMES ANDREWS, LaCrosse BLAINE COOLBAUGH, Hays



SHEA, BAKER, CLAIBOURN, L. KOBLER, O. KOBLER, RIEGEL, LEWIS, GRISWOLD
 NIHIESER, MAXWELL, WICKIZER, BOMGARDNER, KULP, KEIRNS, STEEPLES

SIGMA TAU GAMMA



Founded at Warrensburg State Teachers College, Warrensburg, Mo., June, 1920
 Eta Chapter Installed January 23, 1926

Colors—Purple and White

Publication—Signet

Flower—White Rose

MEMBERS

Seniors

ANDREW RIEGEL, Ford
 JIMMIE SHEA, Selden
 CARL BAKER, Larned
 LEO KOBLER, Penokee
 SHERWIN GRISWOLD, Rossville
 PRESTON MAXWELL, Randall

Sophomores

EDWARD LEE KEIRNS, Downs
 CLAUDE NIHIESER, Arnold

Juniors

WALLACE STEEPLES, Palco
 HAROLD BOMGARDNER, Palco
 CLEMFORD KULP, Wa Keeney
 BRADEN CLAIBOURN, Salina

Freshmen

OTTO KOBLER, Penokee
 LAWRENCE LEWIS, Hays
 WALDO WICKIZER, Hays

Pledges

CLYDE SMITH, Bison
 ELLIS EASTER, Randall
 DALE KELLY, Phillipsburg
 ISAAC PEMBLETON, Palco
 HOWARD BAKER, LaCrosse
 PAUL SWEETLAND, Hays

LOKE SMITH, Bison
 ROLLAND NIPPS, Gretna
 PAUL PARRISH, Asherville
 HERBERT JOHNSON, Minneola
 LAWRENCE ROMEISER, Bison
 JESSE BOEHNER, Downs



AGNEW, CARTER, COLES, HOCH, HURLOCK
 KING, BURROUGHS, MILLER, CONNER

PAN-HELLENIC

Organized December 12, 1925

OFFICERS

<i>President</i>	Delta Sigma Epsilon	FRANCES HURLOCK
<i>Recording Secretary</i>	Sigma Sigma Sigma	JEAN BURROUGHS
<i>Corresponding Secretary</i>	Gamma Sigma	MILDRED KING
<i>Treasurer</i>	Omega Epsilon Sigma	JULEFF COLES

MEMBERS

ELANCHE HOCH, Hays
 JULEFF COLES, Hays
 LORENE BARTLETT, Plainville
 JEAN BURROUGHS, Plainville
 MILDRED CARTER, Kipp
 ELLA MILLER, Claffin
 MILDRED KING, Hays
 FRANCES HURLOCK, Lincoln

In Facultate

DEAN ELIZABETH J. AGNEW



ANDERSON, N. COLES, LANDRUM, B. HOCH, J. COLES, FIELDS
SMITH, BRIGGS, DOUBRAVA, H. HOCH, C. COLES, WILMOT

OMEGA EPSILON SIGMA

Founded at Warrensburg, Missouri
Beta Chapter installed April 18, 1925

Colors—Green and White

Flower—Growing Narcissus

Patronesses

MRS. W. A. LEWIS	MRS. J. E. ROUSE
MRS. H. E. MALLOY	MRS. C. D. BLAKE
MRS. GEO. PHILLIP, JR.	

Seniors

JULEFF COLES	Hays
BLANCHE HOCH	Hays
ERNESTINE FIELDS	Hays
VIOLET BRIGGS	Hays

Juniors

NESSIE COLES, Hays
MYRTLE ANDERSON, Oberlin
NINA WILMOT, Norton
CAREY COLES, Hays
DELMA GRUNDMEIER, Fairport

Sophomores

MARIE SMITH, Kingman
HELEN HOCH, Hays
MARY DOUBRAVA, Lorraine

Sponsor

MRS. NITA LANDRUM



LEE, I. LOVEJOY, G. REINECKE, M. REINECKE, L. REINECKE, LEWIS
 KING, CARTER, HAVERCROFT, HUPFER, GIESS, MENELEY
 G. LOVEJOY, ALLBERT, HAYES, MCVEY, AGNEW

GAMMA SIGMA



Organized in 1920

Colors—Yellow and White

Flower—Chrysanthemum

Seniors

ROSINA ALLBERT, Hays
 MILDRED CARTER, Kipp
 CATHERINE LEWIS, Hays

Juniors

ROSA GIESS, Arnold
 JOSEPHINE HUPFER, Bunkerhill
 MILDRED KING, Hays
 GENEVIEVE LOVEJOY, Almena
 EDWINA MCVEY, Hays

In Facultate

MISS ELIZABETH J. AGNEW

Sophomores

EULA HAVERCROFT, Partridge
 ISABEL LOVEJOY, Almena
 GERALDINE REINECKE, Great Bend
 LOLA REINECKE, Great Bend
 MARJORIE REINECKE, Great Bend

Freshmen

GLADYS HAYES, LaCrosse
 MILDRED LEE, Hays
 PRISCILLA WILSON, LaCrosse
 LOUISE BOWLUS, Bunkerhill

Patroness

MRS. J. G. BRENNER



E. MILLER, ADAMS, L. MILLER, TIMKEN, F. HURLOCK
 NOBLE, MEYER, NEVE, BUENNING, CAMPBELL
 E. HURLOCK, HOFFMAN, WICKMAN, HUNTER, STEPHENS

DELTA SIGMA EPSILON

Founded at Miami University,
 Oxford, Ohio

Rho Chapter installed October
 2, 1925



Colors—Olive Green and Cream
Flower—Cream Tea Rose
Publication—Shield

Seniors

BERTHA HUNTER, Lincoln
 FRANCES HURLOCK, Lincoln

Sophomores

DOROTHY WICKMAN, Colby
 LEONE MILLER, Salina
 ELLA MILLER, Clafin
 ESTHER ADAMS, Hays
 ROSALIND NOBLE, Hays
 RUTH MEYER, Bison
 TWILA CAMPBELL, Wa Keeney

Juniors

ETHEL HURLOCK, Lincoln
 JOSEPHINE FARRISH, Palco

Freshmen

LOUISE TIMKEN, Bison
 CLARA NEVE, Bison
 LUCILLE BUENNING, Salina
 GLADYS HOFFMAN, Brownell

In Facultate

MISS MARY ANN STEPHENS



BURROUGHS, BLUME, BARTLETT, RUSSELL, CASTER, A. PFISTER, STEWART, STEEPLES
 CONNER, ZIEBER, I. PFISTER, SHIPLEY, LAMBERT, BROWN, SIELING

SIGMA SIGMA SIGMA

Founded at Farmville State Teachers College, Farmville, Va., 1898
 Established at K. S. T. C., November 12, 1925

Colors—Royal Purple and White

Flower—Purple Violet

Publication—Triangle

MEMBERS

Seniors

GRETA BLUME, Garfield
 MARY RUSSELL, Jewell City
 LOUISE SIELING, Hays

Juniors

ADA BROWN, Webster
 PAULINE OSKINS, Hays

Sophomores

LORENE BARTLETT, Plainville
 JEAN BURROUGHS, Plainville
 LURA CONNER, McDonald

Freshmen

LELA CASTER, Oberlin
 IRENE PFISTER, Pawnee Rock
 NETTYE SHIPLEY, Smith Center
 LOIS STEWART, Goodland
 FLORA ZIEBER, Pawnee Rock

Pledges

HELEN CHRISTENSEN, Menlo
 VIOLA GATES, Hill City
 ELIZABETH LAMBERT, Wilson

AVIS PFISTER, Pawnee Rock
 LAURA SAUBERLI, Ellsworth
 FAYE STEIGER, Menlo

ELSIE BOWIN, Oberlin

Sponsor

MISS LULU MCKEE

Patroness

MISS ANNIE LAURIE MCKEE

HONORARY ORGANIZATION'S.





BURNETT, COLES, ECORD, WEATHERLY
SEIBERT, VON TREBRA, WOOSTER

PI KAPPA DELTA

National Honorary Forensic
Founded at Ottawa University, Kansas, 1912

Nu Chapter installed at K. S. T. C., October 4, 1924



Seniors

ALLEN ECORD, Oberlin
HUGH BURNETT, Tribune
J. T. VON TREBRA, Oswego

Juniors

NESSIE COLES, Hays
VICTOR SEIBERT, Great Bend

In Facultate

L. D. WOOSTER
JOSEPHINE WEATHERLY



HURLOCK, HUNTER, RIEGEL, SPENCER, NORTHUP, SNODGRASS
 ANDERSON, HUTCHINSON, BROWN, BRIGGS, HOCH, STEPHENS

KAPPA OMICRON PHI



National Home Economics, Honorary
 Founded at Teachers College, Maryville, Mo., 1923

Established at K. S. T. C., January 31, 1925

Colors—Red and Gold

Flower—Red Poppy

Publication—Distaff

Seniors

FRANCES HURLOCK, Lincoln
 BLANCHE HOCH, Hays
 VIOLET BRIGGS, Hays
 BERTHA HUNTER, Lincoln
 LUCILLE RIEGEL, Hays
 GRACE SPENCER, Hays
 LOIS NORTHUP, Quinter
 ANNABEL HUTCHINSON, Hays

Junior

MYRTLE ANDERSON, Oberlin

Sophomore

ADA BROWN, Webster

In Facultate

MISS ETHELL SNODGRASS
 MISS MARY ANN STEPHENS

Debate and Oratory

THE Kansas State Teachers College of Hays began its forensic activities in 1913, and a marked degree of progress has been made since that time. For the first several years only a men's varsity team was selected, and this team participated in one debate each year. This contest was usually with some Kansas team. In 1925 the greatest progress took place when three teams were selected. They were a men's team, women's team, and a freshmen team, and these teams have been selected ever since. It is probable that even more teams will be selected in the future.

Within the past few years as many as eight debates have been scheduled each season. These debates have been with colleges from Michigan, Illinois, Iowa, Missouri, Oklahoma, Colorado and Kansas. Plans are being formulated whereby regular debate trips will be taken through the mid-west.

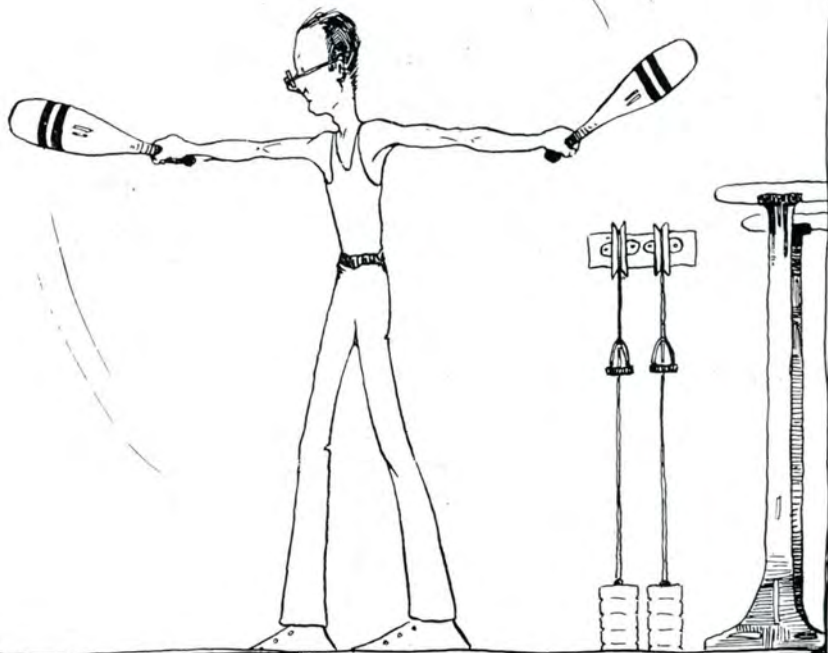
Another advancement in forensic activities has been brought about by the fact that the local institution issues a minimum of two hours and a maximum of five hours of college credit to the regular college debaters and orators. These hours may apply on a major in English.

The school has a debate record of which any college might well be proud. The Hays teams have won seventy-three per cent of their debates since 1913. Some of these victories have been won over such colleges as the Kansas State Agricultural College, Des Moines University, Oklahoma A. and M., Kansas City University and many of the Kansas colleges. Some of the debates lost have been to such schools as Northwestern University of Chicago, Central College of Missouri, Kalamazoo University of Michigan, College of Emporia, and other Kansas institutions.

The Hays orators have been equally successful, for since 1915 they have won the Kansas championship five times. That more interest is shown annually in oratory is shown by the fact that men and women orators are sent annually to Pi Kappa Delta conventions where they compete with the orators from one hundred thirteen colleges over the United States for national honors. These conventions have been held in such places as Estes Park, Colorado, Des Moines, Iowa, and Heidelberg, Ohio.

During the past year debate and oratory have been at the crossroads of continuation or discontinuation. It is because of the interest taken by some of the faculty members and school officials that the forensic activities have been continued. Next year will bring about a complete reorganization of this important activity and the future points toward a continuation of the past record of success. Since the college has for years furnished judges and material to the nearby high schools, it is almost certain that the Kansas State Teachers College of Hays will become known as the Center of Kansas Athletics, Music, and Debate.

CLUB'S.





McFERRIN, VON TREBRA, ANDERSON, BURDITT, BURNETT, WOODS
IMLER, RIEGEL, LEE, ECORD

Y. M. C. A.

CABINET

<i>President</i>	ALLEN ECORD
<i>Vice-President</i>	HUGH BURNETT
<i>Secretary-Treasurer</i>	WENDELL BURDITT
<i>Hi-Y Circle Chairman</i>	RALPH IMLER
<i>Recreational Chairman</i>	RUSSELL ANDERSON
<i>Financial Chairman</i>	ANDREW RIEGEL
<i>Publicity Chairman</i>	WALTER McFERRIN
<i>Membership Chairman</i>	B. Z. WOODS
<i>World Service Chairman</i>	J. T. VON TREBRA
<i>Faculty Sponsor</i>	DEAN F. B. LEE

ABOUT fifty young men are taking Y. M. C. A. as an activity, meeting each Thursday at 9:35 for discussion. The desire of the organization is to get the men on the campus, both faculty and students, together for discussion of campus life, their relation to it, and its relation to them, and the relation of all to the teachings of Jesus. One of the means to this end was "Religious Week," which was held this year just before Easter, the Y. M. C. A. and Y. W. C. A. co-operating. During this week a speaker was brought to the campus and daily meetings were held. These meetings were intended to stimulate thought on the part of the students, to cause the students to weigh their various college activities in the light of Christianity, to get them to look about and decide whether they were pursuing just the most profitable course.

The Y. M. C. A. sponsors a student enrollment advisory group, especially for freshmen, on enrollment day, and a series of social gatherings where all the students may come and get acquainted.



SHEARER, HOCH, OPDYKE, DANIELS, HOWE, AGNEW
 WRIGHT, RIEGEL, HAVERCROFT, SHIPLEY, PROFFITT, WOODS

Y. W. C. A. CABINET

<i>President</i>	ELLA SHEARER
<i>Vice-President</i>	GOLDIE PROFFITT
<i>U. R.</i>	DOROTHY DANIELS
<i>Treasurer</i>	EMMA HOWE
<i>Secretary</i>	HELEN HOCH
<i>Music Chairman</i>	FADONNA WRIGHT
<i>Devotional Chairman</i>	BIRDIE RIEGEL
<i>Social Chairman</i>	EULA HAVERCROFT
<i>Publicity Chairman</i>	ELSIE SHIPLEY
<i>Finance Chairman</i>	MAGDALENE WOODS
<i>Big Sister Chairman</i>	WILDA OPDYKE
<i>In Facultate</i>	MISS ELIZABETH J. AGNEW

The Young Women's Christian Association has as its purpose the extension of fellowship between all students, domestic and foreign. The organization strives for a student's threefold development: Spiritual, physical, and mental. In addition to regular weekly meeting, social gatherings are held several times each year.



BIRD, BROOKS, CRISSMAN, C. COLES, N. COLES, J. COLES, CORNWELL, ERICSON
MILLER, MCCULLEY, SOLOMON, SEXTON, WOODS, NICKEL, MEAD

ART LOVERS CLUB

Seniors

JULEFF COLES, Hays
FLORENCE SOLOMON, Ellis
IDA BROOKS, Iakin
DORIS SEXTON, Garden City
LAURA NICKEL, Hays
RUTH ANNA REED, Stockton

Sophomores

VERA MCCULLEY
MARJORIE REINECKE, Great Bend
ELLEN SNYDER, Soldier

Juniors

CAREY COLES, Hays
NESSIE COLES, Hays
CLAUDYS MILLER, Rush Center
ALICE ERICSON, Lindsborg
MAGDALENE WOODS, Greensburg
GENEVIEVE LOVEJOY, Almena

Freshmen

ROBERT BIRD, Hays
HESTER CRISSMAN, Hays
PANSY CORNWELL, Osborne
SARA MEAD, Hutchinson
JEANETTE SMITH, Oakley
HELEN FAIRCHILD, Bunkerhill
ESTHER ANNIS, Solomon
RUBY GEER, Gove

In Facultate

MISS ELSIE HARRIS



AGNEW, MCJIMSEY, HEDGES, McVEY, HAVERCROFT
 PROFFITT, TIPTON, MCMONIGLE, TRIMMER, REEMSNYDER

TAU UPSILON PHI

Organized in 1922

Colors—Pearl and Gold

Flower—Narcissus

EULA HAVERCROFT, Partridge
 EVA HEDGES, Hays
 MARGARET MCJIMSEY, Hays
 SARA MCMONIGLE, Hays
 EDWINA McVEY, Hays
 GOLDIE PROFFITT, Alden
 ESTHER REEMSNYDER, Hays
 LORENA TIPTON, Minneapolis
 WILDA TRIMMER, Gove

In Facultate

MISS ELIZABETH J. AGNEW



GEROLD, VENNEBERG, PHANNENSTIEL, BIGGE, SCHULTZE, SAWYER
 BURCHETT, SCHWENKER, TAYLOR, BENOIT, TIPTON, VANCE
 WILLIAMS, ROURKE, ADAMS, GILMORE, YOUSE, HARDY

COMMERCIAL CLUB

Sponsor A. M. VANCE
Faculty Member MISS HARRIET SCHWENKER
Faculty Member W. S. BRIGGS

Seniors

FRANCES OHEIM, Kinsley
 MAUDE BALDRIDGE, Garden City
 MARTHA BIGGE, Hays
 CLAUDE BURCHETT, Oberlin
 VEDA VENNEBERG, Hays

Juniors

EDNA FAYE BROWN, Weskan
 DAVID MOSIER, Hoxie
 ELIZABETH GILMORE, Hays
 ALEXANDER PHANNENSTIEL, Hays

Sophomores

NINA ALEXANDER, Copeland
 ETHEL HOKE, Hays
 MARGARET MACKENZIE, Agra
 EUNICE GEROLD, Atwood

ARCHIE TAYLOR, Dresden
 JULIA BENOIT, Clyde
 LORENA TIPTON, Minneapolis
 CLARENCE YOUSE, Bunkerhill

BLANCH GILMORE, Hays



BRIGGS, ALEXANDER, BISSITT, WASINGER, OHEIM, E. F. BROWN
 HAIR, HOFFMAN, HOKE, KARLIN, BALDRIDGE, MOSIER
 HISEY, GILMORE, ZIEBER, W. BROWN, STAAB, MACKENZIE

COMMERCIAL CLUB

Freshmen

SYLVENUS WASINGER, Collyer
 LETHA BISSITT, Bucklin
 REBECCA HAIR, Brownell
 GLADYS HOFFMAN, Brownell
 HENRY KARLIN, Hays
 HAROLD HISEY, Lenora
 FLORA ZIEBER, Pawnee Rock

WENDELIN BROWN, Walker
 ISIDOR STAAB, Hays
 GENEVIEVE SCHULTZE, Natoma
 PAULMER SAWYER, Monument
 DON WILLIAMS, Monument
 LUCY ROURKE, Brownell
 DOROTHY ADAMS, Hays

WILABOUR HARDY, Bucklin



HUNTER, LEWIS, STEPHENS, HOCH, BRIGGS, LEMLEY, SNODGRASS
 ROUNER, HUTCHINSON, NEMEYER, SPENCER, NORTHUP, MITCHELL, SCOTT
 BURDITT, B. RIEGEL, ENRIGHT, L. RIEGEL, PECK, HURLOCK

HOME ECONOMICS CLUB

Seniors

VIOLET BRIGGS, Hays
 BERTHA HUNTER, Lincoln
 VERA ENRIGHT, Hays
 LOIS NORTHUP, Quinter
 ELIZABETH WEISENSEE, Larned

ALICE BURDITT, Hays
 FRANCES HURLOCK, Lincoln
 FLORA LEMLEY, Downs
 EDITH PECK, Sylvan Grove

MARGARET SCOTT, Abilene
 BLANCHE HOCH, Hays
 ANNABEL HUTCHINSON, Hays
 GRACE SPENCER, Hays
 LUCILLE RIEGEL, Hays

Juniors

JOSEPHINE FARRISH, Palco
 BIRDIE RIEGEL, Hays
 MAUDE BARBER, Lincoln

RUTH LEWIS, Palco
 RUTH ROUNER, Luray
 ADA BROWN, Webster

ETHEL NEMEYER, Quinter
 DOROTHY DANIELS, Garfield
 LUCILE WRIGHT, Lenora

Sophomores

EVA MITCHELL, Hoisington

EVELYN BLOOME, Rexford

MARIE SMITH, Kingman

Freshman

VERA FRANCIS, Covert

In Facultate

MISS ETHELL SNODGRASS
 MISS MARY ANN STEPHENS



MILLER, BOMGARDNER, BARROWS, LEWIS, KOBLER, LOVEJOY, GIESS, PROFFITT
 BARTLETT, BURROUGHS, SMITH, MENELEY, McVEY, B. RIEGEL, HAVERCROFT, OPDYKE
 STEEPLES, KIRKMAN, WRIGHT, BRONSON, V. RIEGEL, LEE

TEARIN' TIGERS

Seniors

IRWIN McVEY, Lucas
 FRANK ANDERSON, Oberlin
 GOLDIE PROFFITT, Alden
 JIMMIE SHEA, Selden
 LEO KOBLER, Penokee
 HUGH BURNETT, Tribune

Sophomores

ISABEL LOVEJOY, Almena
 EULA HAVERCROFT, Partridge
 JEAN BURROUGHS, Plainville
 LORENE BARTLETT, Plainville
 LORENA TIPTON, Minneapolis
 LOKE SMITH, Bison
 FADONNA WRIGHT, Kinsley
 LEONE MILLER, Salina

Juniors

BIRDIE RIEGEL, Hays
 RUSSELL ANDERSON, Oberlin
 JOE BRONSON, Bunkerhill
 WALLACE STEEPLES, Palco
 HAROLD BOMGARDNER, Palco
 ROSA GIESS, Arnold
 EDWINA McVEY, Great Bend

Freshmen

WILLIAM BARTLETT, Plainville
 CHARLES POKORNEY, LaCrosse
 MARVIN BARROWS, Ness City
 LAWRENCE LEWIS, Hays
 GORDON KIRKMAN, Hays
 FLOYD NELSON, Smith Center
 MILDRED LEE, Hays
 VIVIAN RIEGEL, Hays
 ROYALYNN MORT, Hill City.

In Facultate

LEON S. PICKENS

Review of School Music

THE Music Department of Hays State Teachers College has grown, in thirteen years, to be one of the best in the state. With the coming of Prof. Henry Edward Malloy as its director in 1914, the department began to assume its present proportions of a well equipped and popular school of music, the students of which rank in point of preparation with those of older institutions. Mr. Malloy, with characteristic enthusiasm and untiring effort, is accomplishing, in the organization and training of the Festival Chorus, that which to many would seem impossible. Since the time of organization, nine years ago, he has held firmly, in the face of almost insurmountable difficulties, to his original purpose, which was to make the chorus not only the best in the state, but to make it as great, if not better, than any other chorus in the country.

The Music Festival, which is held each year during the first week of May, has grown steadily in proportions. Beginning with one oratorio, with local soloists, and a hundred voices, it now boasts of over five hundred voices; sings two such pretentious oratorios as the "Elijah" and "Messiah" during festival week; and has, as soloists, artists of national and international reputation. The first and second Sundays are given over to concerts by concert artists of the highest rank in the musical world. Since the building of Sheridan Coliseum, which seats thirty-five hundred people, it has been possible to engage such world-renowned artists as Mme. Ernestine Schumann-Heink, contralto, who sings a return engagement at this year's festival; Rosa Posnelle, leading soprano of the Metropolitan Opera Company, New York; Eddy Brown, one of the best violinists of the day; and many others. These concerts attract audiences which come from an ever-increasing radius of towns in western Kansas.

The contests in public school and applied music, which are always conducted during the week, bring over a thousand high school students and teachers to the College. The greater part of two days is given to the contests which cover the fields of voice, violin, piano, boys' and girls' glee clubs and quartets, mixed chorus, band and orchestra.

Among the every-day activities of the music department, the Men's and Women's Glee Clubs have recently become most popular. Operated on a competitive basis, they have become one of the most sought-after activities on the campus in point of membership, and hence have attained a high degree of excellence. The Women's Glee Club is directed by Mr. Malloy and has already proved that it is capable of highly artistic performances and gives every evidence of being able to attain still higher standards. This organization made a tour of four towns in Central Western Kansas and met with wonderful success in every concert. The Oakley, Kans., press said of it. "The tone quality of the club is lovely; it is noticeable for its freshness and sparkle."

The Men's Glee Club, under the direction of Prof. J. Alfred Casad, voice instructor on the music faculty, also made a tour of four towns in western Kansas and met with unprecedented success. The Wa Keeney, Kans., press said of it: "The Club gave a high class entertainment, and the concert was a rare treat."

REVIEW OF SCHOOL MUSIC—Continued.

Mr. Casad, who is president and one of the originators of the Kansas Inter-collegiate Glee Club Association, took his club to Emporia to compete with nine other colleges in the state for the honor of entering the contest of the Missouri Valley Conference of Glee Clubs. His club won third place, which proves its high degree of excellence.

The combined Glee Clubs formed a nucleus and foundation for a Christmas concert given December 21. The "Messiah" was given with faculty soloists and the college orchestra. Prof. Henry Edward Malloy was the director.

This year the college orchestra has shown great improvement in number of members, variety of instruments and general ability. There are now forty members who are fast becoming able to play their parts in difficult orchestral compositions. Few of the instruments used in a symphony orchestra are lacking, and Mr. Malloy, the director, is only striving to duplicate what he has.

The College Band, under the direction of Prof. Rollins An-Gove Seabury, is assuming proportions and ability equal to that of the orchestra. This year the fifth annual Band Concert was given and was greatly appreciated.

Prof. Paul Fontaine is a new member of the music faculty this year, but has already been accepted as a fine pianist and teacher.

As a reward to many students and faculty members who had given long and faithful service in the various musical activities mentioned above, one hundred and twelve medals were given by the music department in the form of pins for the girls and watch-charms for the boys. The medals were of gold and black enamel to represent the school colors, and each bore the name of the organization. The initials of the school and a lyre were executed in gold on the front. These medals not only have intrinsic value, but also express the value of proficiency, and regular and punctual attendance at all rehearsals. Several students received as many as three medals and not a few were given two.

The department of public-school music offers a wide range of courses which are intended to equip public-school music supervisors for their work to a superlative degree. This curriculum, which is surpassed by few colleges and universities, leads to the Bachelor of Science in Music Education and is intended to raise the standard of music education in the public schools to a point which is far beyond its present stage of development.

"Striving always toward perfection," seems to be the aim of the music department of the Kansas State Teachers College of Hays.



H. E. MALLOY, *Director*



MILDRED CARTER, *Accompanist*



McVEY, BILLINGS, WRIGHT, KING, CARTER



WRIGHT, PFISTER, YORK, FOOS, LEWIS, HAYES, CARTER, GIESS, KING, GRIPTON
 BURROUGHS, OSKINS, RARICK, MAYNARD, REINECKE, HOTZ, NOBLE, BILLINGS, STEINLE, MOONEY
 McVEY, STEWART, GATES, CONNOR, MALLOY, CAMPBELL, MENELEY, LEE, BARTLETT

WOMEN'S GLEE CLUB

HENRY EDWARD MALLOY, *Director*

First Soprano

LORENE BARTLETT
 JEAN BURROUGHS
 FLORINE HOTZ
 MILDRED LEE
 AVIS PFISTER
 COILA RICHARDS
 FADONNA WRIGHT
 VERA YORK

Second Soprano

LUCILLE FOOS
 GLADYS HAYES
 ELIZABETH MAYNARD
 MARGARET MOONEY
 GERALDINE REINECKE
 EGLA STEINLE
 LOIS STEWART

First Alto

MABELLE BILLINGS
 TWILA CAMPBELL
 LOIS GRIPTON
 MILDRED KING
 CATHERINE LEWIS
 MARGARET RARICK

Second Alto

LURA LEE CONNER
 VIOLA GATES
 ROSA GIESS
 ELAINE KAY
 EDWINA McVEY
 PAULINE OSKINS

Reader . . . ROSALIND NOBLE . . . *Accompanist* . . . MILDRED CARTER



LORENE BARTLETT, *Accompanist*



J. ALFERD CASAD, *Director*

SAXOPHONE SEXTETTE

THIS organization evidently was too brilliant, or perhaps it was the instruments, to face the camera—at least we have been unable to obtain a picture of this melodious group. Blaine Coolbaugh, the leader of the "Crooked Pipe Puffers," has won a fine reputation as a saxophonist, and with him, Burton Osborn also deserves honorable mention. The rest of the fellows do not claim to be performers, but just like to *toot*. They are Waldo Wickizer, Elbert Macy, Jack Coolbaugh, and Harry Blackwill. We also have the Varsity Sextette, which is the same group except that the places occupied by Jack Coolbaugh and Burton Osborn were occupied by Kenneth Wagner and Max Blakely.



MALMBERG, JACKA, SMITH, L. KOBLER, L. EDGINGTON, HUFFMAN, HENNING
 BRONSON, BLACKWILL, B. COOLBAUGH, DEWS, KIRKMAN, DAWSON, LEWIS, WICKIZER, COPELAND, CURRY, BOMGARDNER, J. COOLBAUGH, BARTLETT
 O. EDGINGTON, MACY, O. KOBLER, CASAD, TEAGUE, OSBORN, WALKER
 BAKER, STEEPLES, BROCKEL, BROOKS, MOODY

MEN'S GLEE CLUB

J. ALFRED CASAD, *Director*

First Tenors—HAROLD BOMGARDNER, JACK COOLBAUGH, ELDEN CURRY, UPTON DAWSON, STEPHEN HUFFMAN

Second Tenors—JOE BRONSON, HAROLD COPELAND, WAYNE JACKA, LEO KOBLER, OTTO KOBLER, BURTON OSBORN, WILLIAM TEAGUE

Baritone—WILLIAM BARTLETT, HARRY BLACKWILL, DOYLE BROOKS, BLAINE COOLBAUGH, CARL DEWS, CARL MALMBERG, NOVA MOODY, WALLACE
 STEEPLES, MYRL WALKER.

Basses—HOWARD BAKER, JULIUS BROCKEL, WILBUR HENNING, LAWRENCE LEWIS, ELBERT MACY, LOKE SMITH, WALDO WICKIZER

LORENE BARTLETT

Accompanist

J. ALFRED CASAD

Director

Varsity Quartette—HAROLD BOMGARDNER, JOE BRONSON, CARL DEWS, JULIUS BROCKEL

HAYS FESTIVAL ORCHESTRA

H. E. MALLOY, *Director*

CLARA L. MALLOY, *Principal, First Violin*
CARL MALMBERG, *Asst. Prin., First Violin*
LOIS HESTWOOD, *First Violin*
LOIS RARICK, *First Violin*
JUANITA OSKINS, *First Violin*
MILDRED KING, *First Violin*
JUANITA WILLIAMS, *First Violin*
IRENE PFISTER, *First Violin*
FR. ALFRED CARNEY, *First Violin*
GEORGE GOTTSCHALK, *First Violin*
WILLIAM DREILING, *First Violin*
MABEL CRAIG, *First Violin*
SAMUEL TWISELTON, *First Violin*
LUCILLE FELTEN, *Principal, Second Violin*
HELEN MEHLER, *Asst. Prin., Second Violin*
HELEN HOCH, *Second Violin*
TELKA KRAUS, *Second Violin*
TWILA CAMPBELL, *Second Violin*
EVERETT HOWE, *Second Violin*
LUCILLE FOOS, *Second Violin*
ALICE UNRUH, *Second Violin*
JULIA BENOIT, *Second Violin*
LOUISE HOLMAN, *Second Violin*
ROSALIND NOBLE, *Second Violin*
DAVID POHLHAMMER, *Second Violin*
JOSEPHINE WEATHERLY, *Viola*
HJALMAR WETTERSTROM, *Principal, Cello*
WILBERT MAYNARD, *Asst. Prin., Cello*
ALEXANDER MEIER, *Cello*
ELIZABETH MAYNARD, *Cello*
BLAINE COOLBAUGH, *Cello*

BRANCH, *Cello*
ARTHUR JELLISON, *Cello*
MARGARET HERRMAN, *Cello*
LENNARD GUNNERSON, *Principal, Double Bass*
ASA KING, *Asst. Principal, Double Bass*
PAULINE OSKINS, *Double Bass*
DOROTHY MORRISON, *Double Bass*
MARGARET RARICK, *First Flute*
ELDON BELL, *Second Flute*
CLARENCE HAPGOOD, *First Oboe*
EVERETT NIBERT, *Second Oboe*
DOROTHY KING, *First Clarinet*
FRED OSHANT, *Second Clarinet*
WALDEMAR GOODHOLM, *First Bassoon*
JACK COOLBAUGH, *Second Bassoon*
REI CHRISTOPHER, *First Horn*
WILBER, *Second Horn*
LAWRENCE RARICK, *Third Horn*
ELMER SCHLEGEL, *Fourth Horn*
WALLACE STEEPLES, *First Trumpet*
JAMES CARSTENS, *Second Trumpet*
ROLLIN WILBER, *First Trombone*
JULIUS BROCKEL, *Second Trombone*
EHRENFRIED BRUEGEL, *Third Trombone*
HARRY BLACKWILL, *Tuba*
DAVID MARKEL, *Tympani*
ERNESTINE FIELDS, *Piano and Pipe Organ*

This is not exclusively a student organization but students are given the preference in selecting membership.

HAYS CONCERT BAND

ROLLINS AN-GOVE SEABURY, *Director*

CHAS. C. KING, *Drum Major*

EVERETT NIBERT, *Oboe*
ELDON BELL, *Flute and Piccolo*
H. E. MALLOY, *Flute*
MARGARET RARICK, *Flute*
FRED ALBERTSON, *E Clarinet*
DOROTHY KING, *B Clarinet*
MILDRED LEE, *B Clarinet*
MARY EARLENBAUGH, *B Clarinet*
ORLAND EDGINGTON, *B Clarinet*
VERNA ROPER, *B Clarinet*
VERA McCULLEY, *B Clarinet*
C. H. LANDRUM, *B Clarinet*
F. N. LAROSH, *B Clarinet*
FRED OSHANT, *Clarinet*
G. KIRKMAN, *Bass Clarinet*
JACK COOLBAUGH, *Bassoon*
BLAINE COOLBAUGH, *Sop. Sax.*
MAX BLAKELY, *Alto Saxophone*
ELBERT MACY, *Alto Saxophone*
KENNETH WAGNER, *Tenor Saxophone*
CHAS. D. BRUMITT, *Baritone Saxophone*
ELMER SCHLEGEL, *Horn*
LAWRENCE RARICK, *Horn*
LAWRENCE LEWIS, *Horn*
CLEMFORD KULP, *Mellophone*
EDWIN VAN DOREN, *Mellophone*

ROBERT BARTHOLIC, *Mellophone*
PAUL SWEETLAND, *Mellophone*
LOYAL VAN DOREN, *Mellophone*
W. WALLACE STEEPLES, *Cornet*
A. W. SENG, *Cornet*
JAMES G. CARSTENS, *Cornet*
WILLIAM TEAGUE, *Cornet*
HOWARD BAKER, *Trumpet*
ARCHIE LARUE, *Trumpet*
HOBART E. RADER, *Trumpet*
WILSON MCKEE, *Trumpet*
LEO EDGINGTON, *Trumpet*
JULIUS J. BROCKEL, *Trombone*
EUGENE BRUEGEL, *Trombone*
W. O. DUNCAN, *Trombone*
ARCHIE GASSMAN, *Trombone*
W. M. STANTON, *Baritone*
UPTON DAWSON, *Baritone*
HAROLD G. PALMER, *Baritone*
J. J. BROCKEL, *Baritone*
FRANK B. MILLER, *Tuba*
OTTO KOBLER, *Tuba*
HARRY BLACKWILL, *BBb Bass*
WALTER BOLLINGER, *Drums*
DAVID MARKEL, *Drums*
WM. BARTLETT, *Drums*

PUBLICATIONS.





HUGH BURNETT
Editor



FRANK L. ANDERSON
Business Manager

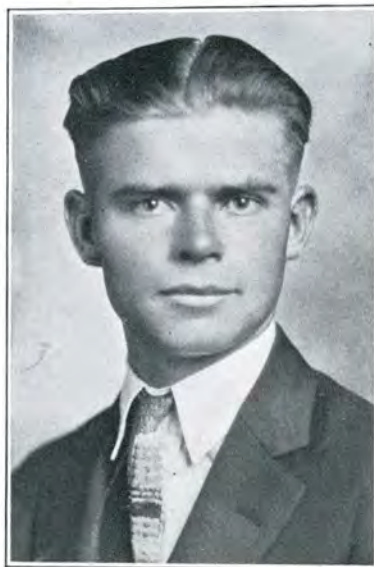
THE Reveille Staff of 1927 sincerely trusts that the readers of this book get as much pleasure from reading their annual as the staff has had in compiling it.



C. W. HENNING	<i>Snapshot Editor</i>
GOLDIE PROFFITT	<i>Calendar Editor</i>
FLORENCE SOLOMON	<i>Art Editor</i>
WENDELL BURDITT	<i>Men's Sport Editor</i>
CAREY COLES	<i>Associate Editor</i>
GLADYS KRAUS	<i>Literary Editor</i>
FRANCES HURLOCK	<i>Women's Sport Editor</i>



WENDELL BURDITT
Editor



ALEXANDER PHANNENSTIEL
Business Manager

THE K. S. T. C. Leader is the student publication at Hays Teachers College. It is under control of the students, with a board of control having two faculty and three student members. The editor of the publication is elected annually by the student subscribers from those who have taken work in the journalism department.

The Leader is the campus organ, voicing student thought through the editorial columns, and student activities through the news columns. It is used as a laboratory for the students of journalism, giving them an opportunity to do practical work in news writing, editing and general newspaper work.

LEADER STAFF

Fall Semester

<i>Associate Editor</i>	GLADYS KRAUS
<i>Organization Editor</i>	GOLDIE PROFFITT
<i>Exchange Editor</i>	JESSIE SHERROD
<i>Literary Editor</i>	KATHRYN TOP

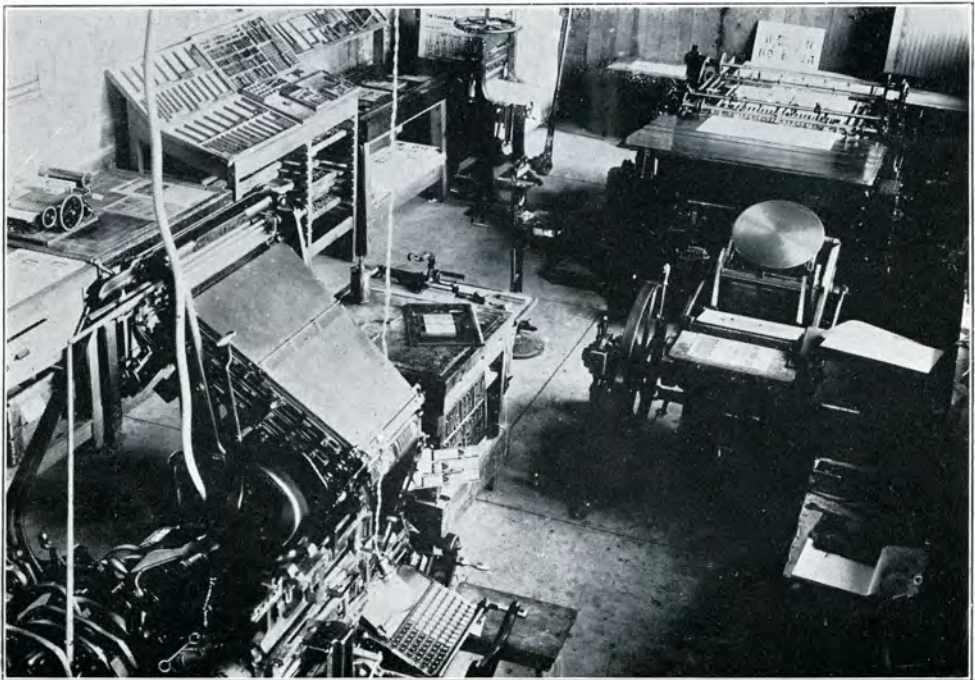
Spring Semester

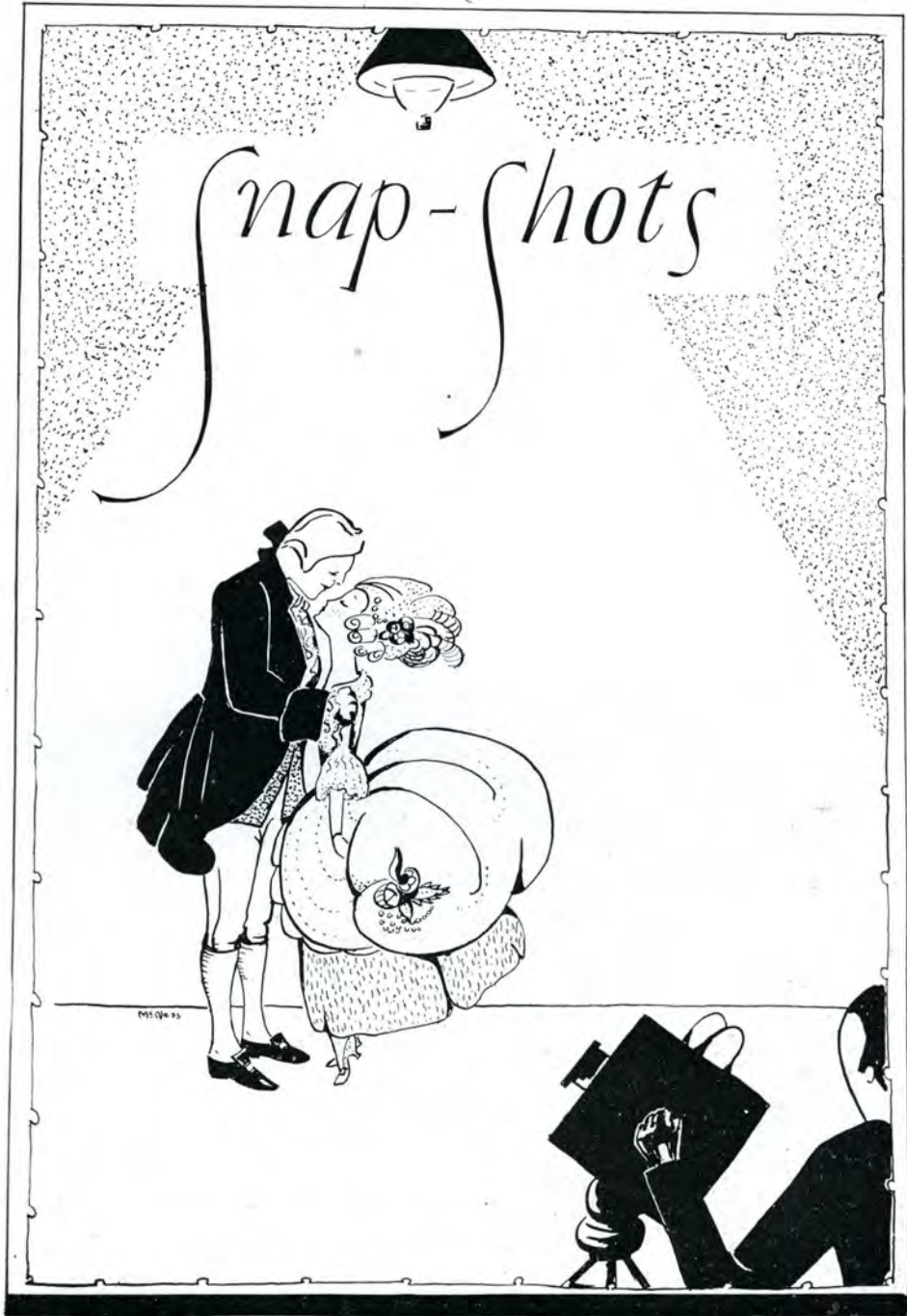
<i>Associate Editor</i>	GOLDIE PROFFITT
<i>Feature Editor</i>	MARGARET SCOTT
<i>Sport Editor</i>	FRANK ANDERSON
<i>Humor Editor</i>	KATHRYN TOP
<i>Exchange Editor</i>	NETTYE SHIPLEY
<i>Society Editor</i>	MARY RUSSELL



Walter Wallerstedt, printer of twenty years' experience, came to K. S. T. C. of Hays in 1920 when the print shop, then valued at about \$400, was housed in the back of the general office. Today the shop is worth approximately \$12,000.

Mr. Wallerstedt's work has received much favorable comment and has won for him an enviable reputation in his profession.





— AS WE ARE —



"DOWN WITH THE MEN!"



CAPTAIN MACK



THE "WHY" OF THE SMILE



MUCHEE WASHEE!



"WILL HE EVER GROW UP?"



THE LADIES' MAN.



Hurlacks
Two



- Fish Pond Loafers -



Human
Pyramid -



Both of 'em.



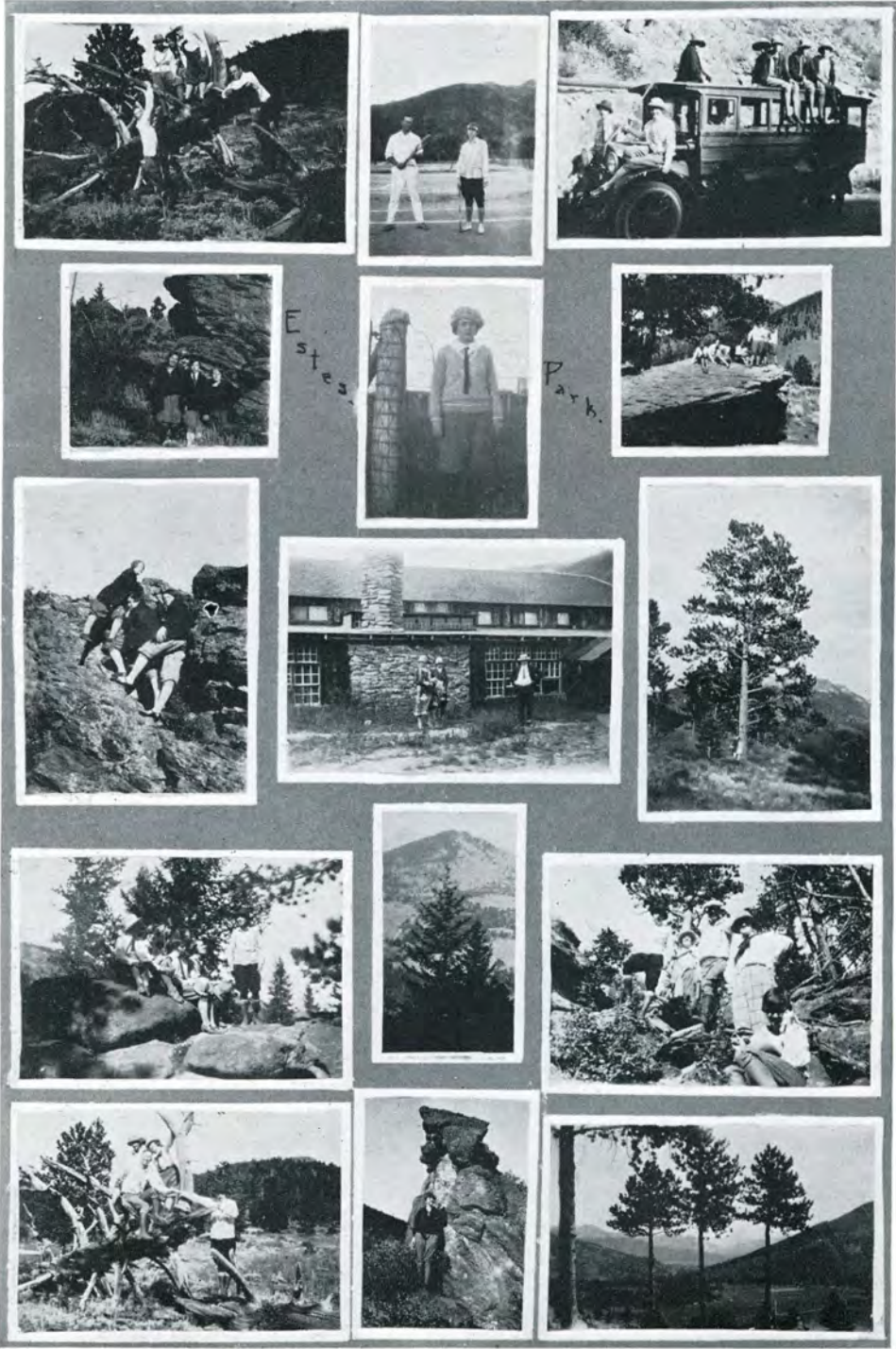
Toodle - too - too - Toot!



Kollege Komics



"The Slow Train Through Arkansas"





Singin' Sherk



Through the Line

Prof. Larbeer

Grave-diggers?



Dorm Daints

Kampus Keepers





Seen on Big Creek



Louise & Elaine



The Freshmen get paddled



Back to Nature



Pray as you enter!



Phil



Johanne



— Both of us —



— "Eight o'clock" —



A
S
W
E
D
O
I
T



All dressed up



A
T
K.
S.
T.
C.



"Von"



Elizabeth —



Vot iss?



Which is which?

Geological survey



"Dizzy" poses.

Just Kill



Jimmie grows up

Serenaders



"Dutch" ???



B.Z.'s feat.

A dozen and three



Look Ahead



7 come 11



"Ben"

K.S.
T.C.
Activities.



"Dutch"

As
The
Korac
Sees
Them.



"Interested"



The "Villains"



DRIVE ON PLEASE



"Lum"



Beauty Parlor



K.S.T.C. - 1947



The Sejema Yow



Henderson Orchestra



All of us pose



"Penshing Heights"

"Preshies"



Leat He ✓

We think so

Case 1

"Tearin' Tigers"



70 'Per"

The three Preshies

Were from ??

— SO THEY SAY —



PUZZLE:
FIND MARGERY'S PIN



BALL ONE!



"I'LL TAKE THAT ONE."



"TWO MORE PAYMENTS
AND SHE'S MINE!"



— WHERE IT ALL
GOT STARTED —



BETWEEN HALVES

SEPTEMBER

Sept. 7. Enrollment begins. Freshmen and Seniors gaze in awe at the new library.

Sept. 8. Prexy gives freshman girls the annual invitation to weep on his shoulder at the first assembly.

Sept. 10. Y. M. and Y. W. give get-acquainted party. Upper-classmen invite freshmen to attend without their ties—freshies also get their first taste of the long heard of paddles.

Sept. 17. Churches give get-acquainted party for students.

Sept. 18. First all-school mixer of the year at the Woman's Building.

Sept. 20. Frank Anderson gives orders and traditions of school to freshmen—Frank says it is a custom for freshmen to wear caps and gowns until Thanksgiving.

Sept. 22. President Lewis gives illustrated lecture in assembly.

Sept. 23. Hurrah! Half-day holiday for fair and prize fight.

Sept. 24. First pep meeting of the year.

Sept. 25. Students and faculty take Slow Train Through Arkansas. K Club gives assembly program. Captain McVey becomes famous as a stump orator.

Sept. 29. Dutch Anderson and Libby Fokorney are chosen cheer leaders.

Mr. Pickens (telling about freshmen experiences): Yes, they made two lines and paddled them on both sides.

Isabel: What's Ruth's last name?

Ethel: Ruth who?

OCTOBER

Oct. 1. Pep meeting and bonfire from boxes furnished by freshmen.

Oct. 2. Wallop Kearney Teachers in first football game of the season. Score 53-0. Freshmen don caps and arm bands. Gordanier tries fish pond again.

Oct. 5. Dr. Gossard from Denver on campus in interest of Y's.

Oct. 6. Classes elect officers.

Oct. 7. Students treat football men to big feed at Cody Commons.

Oct. 8. Tigers meet their Waterloo with Emporia Teachers. Score 14-0. Portenier breaks his leg in game.

Oct. 11. New faculty members have their pictures taken for Reveille.

Oct. 12. Faculty men entertain the ladies at a picnic on Custer Island. Romance lurked with the new members.

Oct. 13. Tearin' Tigers organized. Chorus, Band, Orchestra, and Glee Club pins are awarded. Musicians are easily identified now.

Oct. 14. Custer Hall girls in mourning. Rabbit invades the hall and eats all the house plants.

Oct. 15. Sterling wins from Tigers for the first time in ten years.

Oct. 16. A number of students goes to K. U.-Aggie game. But Baker doesn't—he gets married.

Oct. 21. Tigers win from St. Mary's, first time in years. Students get game over the wire. Students meet 1:30 train to welcome heroes home.

Oct. 23. Gladys Hayes and Leisher make their debut in assembly in "Bluebird."

- Oct. 26. W. C. T. U. meets in Hays. Students put on play for delegates.
Oct. 30. Fate is against us, we lose to Bethany. Father-Son Banquet.
Dr. Wiest tells his classes that the devil is a gentleman—and here's his proof: The devil is an imp of darkness, and if he is an imp of darkness, he can't be imp of light (impolite).
von Trebra has given up his aspirations of becoming president of K. S. T. C. because he doesn't think there would be any chance for advancement.

NOVEMBER

- Nov. 1. Sale of Reveilles is begun.
Nov. 2. Harold Colvin, Y. M. worker, is on campus.
Nov. 4. Teachers meeting—all the old grads come home—and look in wonder at Forsyth Library.
Nov. 5. Bishop Waldorf tells us we are all curiosity seekers and thrill chasers.
Nov. 6. We win from Salina. Homecoming game and banquet.
Nov. 11. Half day holiday! Tigers lose to Wichita U. We hear game over wire.
Nov. 12. Upperclassmen girls at Custer Hall demand party from freshmen—they get it by paying nickels—freshies take money and have party.
Nov. 13. Mr. Anderson speaks in assembly—Dean Lee proves to be a poet.
Nov. 17. Mr. Streeter places box outside the library door for the students to put borrowed books in, so they won't have to confess that they are forgetful.
Nov. 24. Traylor blossoms out in his "Plus Fours" to Pittsburg.
Nov. 25. We lose the last game of the season to Pittsburg Teachers.
Traylor almost met with a bad accident at Wichita—he started out a revolving door and almost ran himself to death.

DECEMBER.

- Dec. 3. Balcony is enlarged. Seniors are promoted to balcony?
Dec. 4. Eula Havercroft is chosen as the school favorite.
Dec. 5. Y. W. gives negro minstrel. Faculty members were the star actors.
Dec. 9. Sigma Tau Gamma pledges entertain Custer Hall girls. Wallace Steeples shows his stuff as a bedtime story teller.
Dec. 10. Board of Regents visit campus. We all have on our company manners—even Prexy.
Dec. 18. Pickens buys a place to put his picture on the exhibit table at the Red Arrow Studio.
Dec. 21. Dorm is illuminated about 10:30 when Ella comes in with a sparkler.
Dec. 22. We go home.
Belva: Eula, where did you get that football sweater? You didn't play football, did you?
Eula: No, but I earned it.

JANUARY.

- January 3. Back to the grind.

Jan. 7. Women's Glee Club makes first appearance. Tigers wallop Kearney Teachers 50-16.

Jan. 8. Kearney regains her poise and makes Tigers fight—23-21 in favor of Tigers.

Jan. 9-14. Everyone cramming for exams. We try to make up for five months of rest.

Jan. 14. Exams over.

Jan. 17. New semester begins.

Jan. 21. The Editor refuses to let Casad get ahead of him—he buys a diamond, too.

Jan. 26. Pickens discards his old faithful Dodge and gets an Essex.

Jan. 27. Faculty women entertain men with a Kansas Day party.

Jan. 28. Jackson stars in Wesleyan game—we win by one point.

FEBRUARY.

Feb. 1. Impersonator is on campus.

Feb. 4. Tigers win from Friends.

Feb. 5. Friends even up things and win from us.

Feb. 11. Anniversary Day. Juniors win honors on decoration. Sophomores win prize for stunt. President's reception at night.

Feb. 14. W. A. A. circus. Barney Coogle and Spark Plug are here, too.

Feb. 17. Glenn Well's Company presents two plays.

Feb. 18. Tigers lose to Pittsburg Teachers.

Feb. 19. Pittsburg Teachers again win from Tigers.

Feb. 21. Tigers lose to Wesleyan. Fifty students go down to see game.

Feb. 23. Coffey-Miller Players make big hit on campus.

Feb. 25. We lose a game to Sterling.

Feb. 26. Tigers win from Sterling. Have wrestling match with C. of E.

Feb. 28. Jean Gross Marionettes on campus.

MARCH.

Mar. 5-6. We play St. Mary's.

Mar. 11. Junior class presents "Nathan Hale."

Mar. 18-19. State basket ball finals are here.

Mar. 28. Little Symphony is here.

APRIL

April 2. Glee Club formal dance.

April 7. Religious week begins.

MAY

May 7. Music Festival week begins.

May 12. Senior week begins. Also the finals.

May 13. They continue.

May 15. Baccalaureate sermon delivered.

May 18. Exams end and so does our endurance and knowledge.

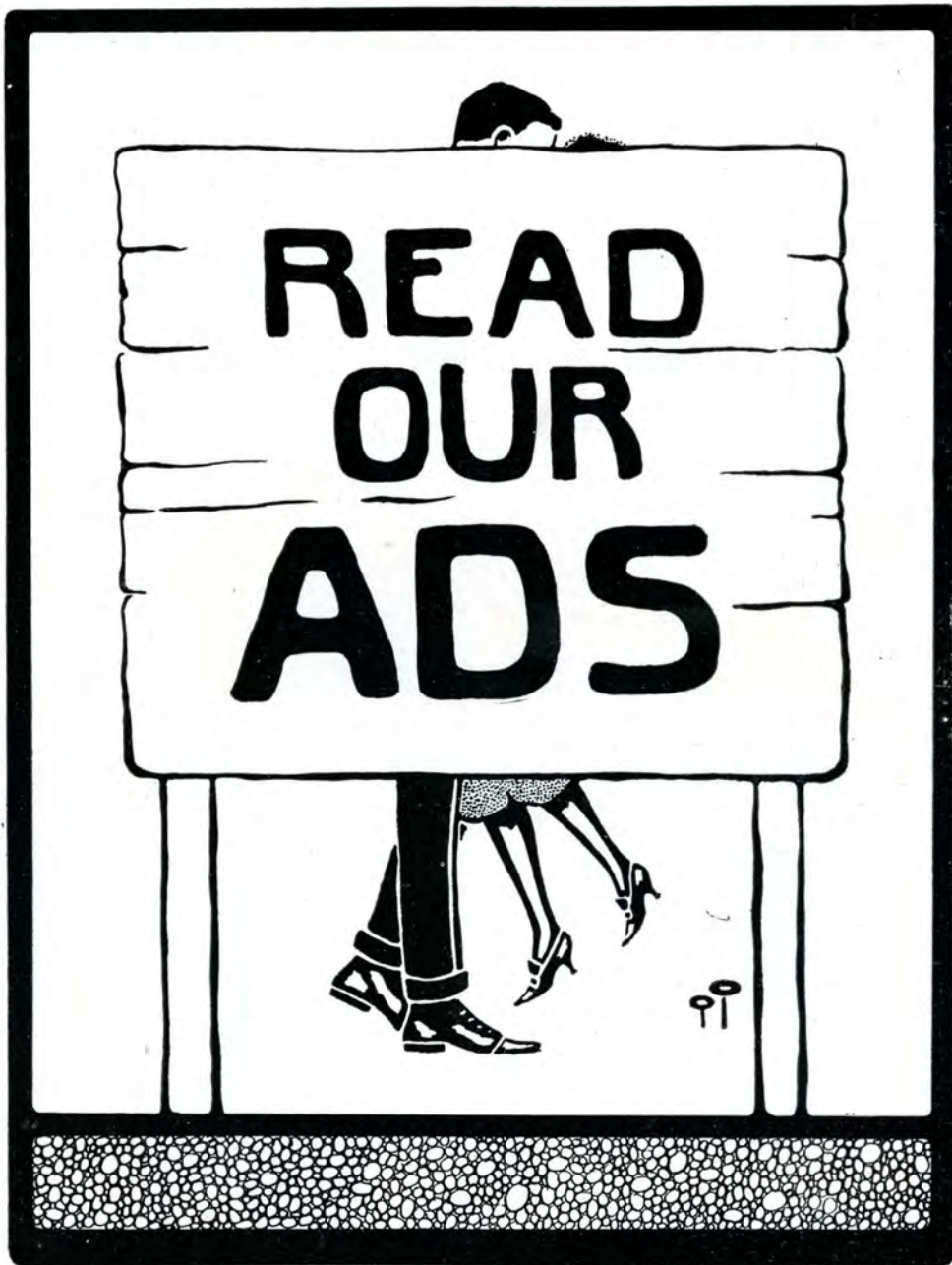
May 19. The end for the class of '27.

The annual is a great invention

The school gets all the fame;

The printer gets all the money;

The editor gets all the blame.



MILLER'S GREENHOUSE

*BRIDES' BOUQUETS
ANNIVERSARY FLOWERS
SICK-ROOM BOUQUETS
FUNERAL DESIGNS*

*If personal attention means anything to you
give us your order*



EAST PERRY AVENUE

HAYS, KANSAS



Kodak Finishing

Mail orders receive prompt attention

*Enlarging and Framing
a Specialty*

ALBUMS, FILM, ART CORNERS
OUR LINE OF FRAMES IS COMPLETE

EKEY

Faster and Better Film Finishing

PHONE 669

R. E. EKEY

HAYS, KANSAS

JOHN S. SACK, *President*
N. F. ARNHOLD, *Vice-President*

F. W. ARNHOLD, *Cashier*
A. H. DREILING, *Ass't Cashier*
I. J. RUPP, *Ass't Cashier*

WELCOME, STRANGERS

You've cast your lot with this good town,
We bid you welcome, too.
Just drop in and get acquainted,
Perhaps we can help you.

Meet friends here any time you like,
Our welcome's warm and wide;
Transact your business in this bank,
Our service is our pride.

Whether friend, patron or neighbor,
Your good will is our wish;
We want to "boost" and push always,
So please remember this.

The Farmers State Bank

HAYS, KANSAS

The Bank Where You Feel at Home

WIESNER'S DEPARTMENT STORE

A. A. WIESNER

The place where you feel at home

DRY GOODS, CLOTHING, SHOES, LADIES'
READY-TO-WEAR, NOTIONS, GROCERIES,
QUEENSWARE AND FLOOR COVERINGS

The Largest Department Store in Western Kansas

ALL MAIL ORDERS FILLED PROMPTLY



109-111 SOUTH CHESTNUT

HAYS, KANSAS

The
**ELLIS COUNTY
 NEWS**

Published Thursdays

JOHN S. BIRD
Editor

FRANK MOTZ
Manager

To publish everything of news interest to its readers and at the same time to promote every movement that may prove helpful to Hays and the community it serves, this newspaper devotes its best efforts.



CIRCULATION, 2,600

Red's Barber Shop

*Ladies' Hair Bobbing
 Our Specialty*

We like to serve you

GAY TILLITSON, *Prop.*

HAYS

KANSAS

F. F. GASSMAN

On mail orders of \$1.00,
 we pay postage one way.

On mail orders of \$2.00,
 we pay postage both ways.



QUALITY SHOE REPAIRING

POST OFFICE BASEMENT

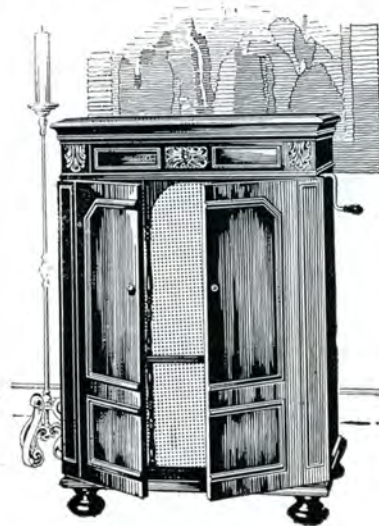
Geyer Brothers, *Druggists*

*Prescriptions
 Toilet Articles
 Druggists' Sundries*



ORTHOPHONIC
 VICTROLAS

*"The World's Greatest
 Musical
 Instrument"*



SODA FOUNTAIN

*Special Booth
 Service*



VICTOR
 RECORDS

*"They are
 better"*

HAYS, KANSAS

ELLIS, KANSAS

WE ALWAYS APPRECIATE YOUR BUSINESS

Large or small orders filled promptly



CITIZENS LUMBER & SUPPLY CO.

PHONE 437

Custer Hall

THE Hall is chaperoned by an official of the College, known as the social director, and is under the general supervision of the College Dean of Women.

The College furnishes rugs, window shades and marquisite curtains, single disappearing beds, with mattress, pad, sheets and pillow cases, dressers, study tables and chairs.

Students furnish their own pillows, blankets, and additional covers, dresser scarfs, towels and soap.



PHONE 10

RESIDENCE PHONE 507

W. J. BELLMAN

HARDWARE

ROPE . KNIVES . GLASS
PADLOCKS . PAINT . TOOLS

The Winchester Store

HAYS, KANSAS

Books

SCHOOL HOME OFFICE

Stationery

SOCIAL AND BUSINESS

SCHOOL

Everything used in
the schoolrooms

OFFICE

Everything used in
the office

SEND US YOUR MAIL ORDERS

MARKWELL'S BOOK STORE

HAYS, KANSAS

H. H. KING

GEORGE KING

KING BROTHERS PHARMACY

THE REXALL STORE

We Serve You Better

The best of CANDIES, STATIONERY AND SODAS.
Our Prescription Department is in charge of Registered men. WE DO NOT SUBSTITUTE.

Everything to be found in a first-class drug store may be found here.

Make our store your headquarters to meet friends.

*The Home of Good Goods and
Square Dealing*

PHONE 80

HAYS, KANSAS

PHONE 53

HOME PHONE 302

GEORGE PHILLIP, Jr.

Dealer in

HARDWARE

PAINTS, OIL, GLASS
GUNS *and* AMMUNITION
TOOLS *and* CUTLERY
STOVES *and* RANGES

DURLAC

CORNER OF JUNIATA AND CHESTNUT STREET

Graduation Time

WHEN the day of graduation approaches, our thoughts naturally turn toward the gifts we wish to bestow on friends who leave the school ranks for fields of chosen work.

In looking toward your selection of gifts, you will find at our store something appropriate for all.

For the man graduate what is more appropriate than a strap watch? The girl graduate will be more than pleased with one of our fine wrist watches.

Or, maybe, a scarf-pin, set of cuff links, fountain pen or traveling case for him, and a bracelet or a sorority pin for her.

Headquarters for K. S. T. C. Pins and Rings

The Tholen Jewelry Co.

HAYS, KANSAS

EUROPEAN
ROOMS WITH BATH

WRITE, WIRE OR PHONE FOR
RESERVATIONS

HOTEL MULROY

J. E. ADAMS
Proprietor

NORTH SIDE ON U. P. HIGHWAY

HAYS, KANSAS



UNDER NEW MANAGEMENT

Open Day and Night
MILES CAFE *and* BAKERY

*FRESH BREAD
and PASTRIES*

N. CHESTNUT HAYS, KANSAS

Compliments of
H. B. NEISWANGER, D. D. S.
Citizens Bank Building
HAYS, KANSAS

The BIRD
INVESTMENT
COMPANY

Builders of

Modern Homes

SEE
PERSHING HEIGHTS

Live in Hays while the boys
and girls go to College.

We Can Sell You On Easy Payments

Tipton Baking Company

STOP...LOOK...LISTEN

Try our Bakery Products.
The food our best and prices right,
At your service day or night.

Extra service given to cakes and rolls
for Special Occasions.

PHONE 640

HAYS, KANSAS



THE BREEDER OF FINE HORSES HAS DEEPEST PRIDE IN HIS THOROBREDS & SECONDARY IN HIS ESTIMATION ARE THE PRIZES THEY EARN & LIKEWISE, OUR GREATEST INCENTIVE IN PRODUCING "THOROBRED" BOOKS AND BINDINGS IS THE SATISFACTION IN THE DOING & & SECONDARY IS OUR PRIDE IN THE PRIZES KRAFT BUILT SCHOOL ANNUALS PERSIST IN WINNING & WHEN YOU SEE THE KRAFT BUILT TRADE MARK BLANK EMBOSSED ON THE BACK OF A SCHOOL ANNUAL ~ YOU HAVE UNDER YOUR EYES A THOROBRED

The HUGH STEPHENS PRESS

A "KRAFT BUILT"
CONTRACT IS A
CONTRACT FOR A
COMPLETE SERVICE



THE "KRAFT BUILT"
TRADE MARK IS A
GUARANTEE OF
CRAFTSMANSHIP

JEFFERSON CITY, MISSOURI

The Burger Engraving Co. Kansas City



The inspiration of the Master Artists of the ages is caught and reflected in delightful styles on the pages of Burger Engraved Year Books ~ ~ ~ ~ ~
The ability sincerity and genuine service of the ~ ~ ~
Burger Organization make pleasant the work of building
the Annual



SCHUELER'S

BILLIARD PARLOR

*Make this place your headquarters for
recreation and amusement*

ICE CREAM—SOFT DRINKS
CIGARS *and* CANDY



SOUTH MAIN STREET

PHONE 455

HAYS, KANSAS

HARKNESS PHARMACY

DRUGS—BOOKS—KODAKS

A complete line of

TOILET ARTICLES, DRUG SUNDRIES
CANDIES, BOOKS, MAGAZINES
and NEWSPAPERS

• •

*Prescriptions Filled by Registered
Pharmacists Only*



PHONE 76

115 W. NORTH MAIN STREET

Style

SOUTH CHESTNUT
HAYS, KANSAS

You will always find
the Newest Creations
in Wearing Apparel
for Men, Women and
Children at this store

*If you really want the new things
you will not regret a visit to*

THE CLASSIC-STORE
ALEX E. BISSING

BASGALL QUALITY GROCERY

GROCERIES
MEATS *and*
FRUIT



PHONE 505-75
HAYS, KANSAS

Hays Cleaners and Merchant Tailors

DRESS BROS., *Proprietors*

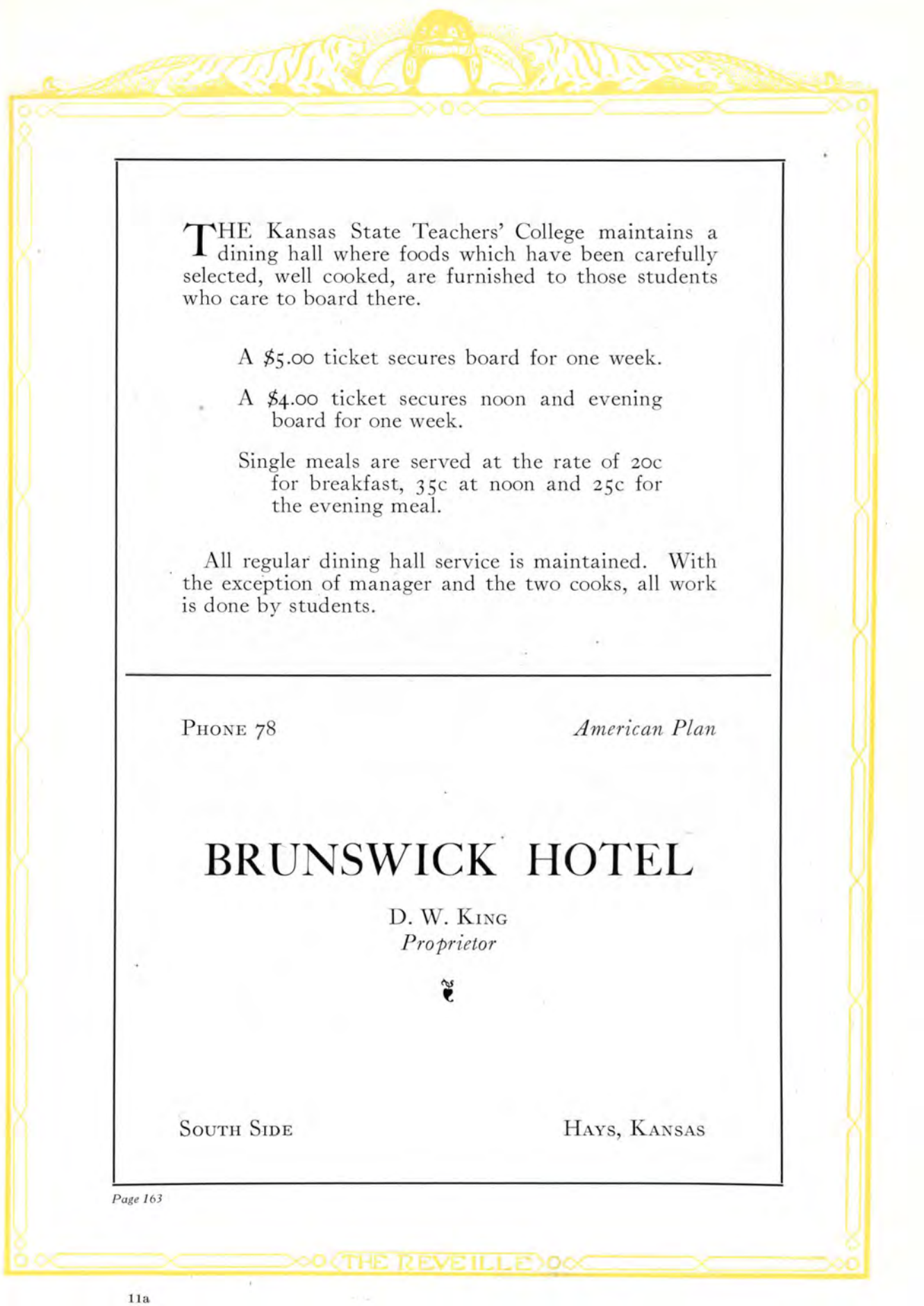
OUR SERVICE *at*
YOUR DOOR

ONE-DAY SERVICE

Call for and Deliver



PHONE 122 HAYS, KANSAS



THE Kansas State Teachers' College maintains a dining hall where foods which have been carefully selected, well cooked, are furnished to those students who care to board there.

A \$5.00 ticket secures board for one week.

A \$4.00 ticket secures noon and evening board for one week.

Single meals are served at the rate of 20c for breakfast, 35c at noon and 25c for the evening meal.

All regular dining hall service is maintained. With the exception of manager and the two cooks, all work is done by students.

PHONE 78

American Plan

BRUNSWICK HOTEL

D. W. KING
Proprietor



SOUTH SIDE

HAYS, KANSAS

ST. ANTHONY'S HOSPITAL

HAYS, KANSAS

ST. ANTHONY'S HOSPITAL,
HAYS, KANSAS.



SISTER M. ADELAIDE
SUPERINTENDENT

THIS SPACE RESERVED AND PAID FOR BY THE
STAFF OF DOCTORS

Hays Protestant Hospital, HAYS, KANSAS



MISS FLORENCE HAEHN, *Superintendent*

Hur-Rah! *for the Hays College*

Remember—The Hays Steam is always ready to serve you. We guarantee our work and will always treat you fair.



HAYS
STEAM LAUNDRY

Phone 276

N. M. SCHLYER

Dealer in

IMPLEMENTS
HARDWARE

See us before you buy

PHONE 20

HAYS, KANSAS

LET

“MOSE”

DO IT

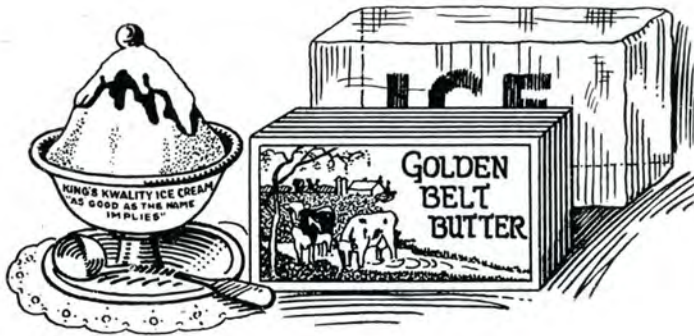
Campus PHOTO Shop

C. W. HENNING.

COLLEGE GREENHOUSE

PHONE 624

HAYS, KANSAS



PRODUCTS OF

GOLDEN BELT CREAMERY & ICE COMPANY

HAYS

COLBY

PLAINVILLE

PHONE 484

Oldham Brothers Motor Company
HAYS, KANSAS



Chevrolet Sales and Service on Federal Highway No. 40

THE STRAND THEATRE

M. G. KIRKMAN

*“That which is of Superior Quality
Very Quickly Seeks Its Kind”*

A TEMPLE OF THE SILENT ART
THE BEST OF PICTURES

Our Sunday shows are carefully
chosen from the best attractions

Matinee on Sunday

CHESTNUT STREET

HAYS, KANSAS

BRENNER'S

*The most modern and up-to-date store
in Western Kansas*

You will find the newest styles at all times in Young Ladies' and Men's Ready-to-Wear Garments. We guarantee satisfaction with every purchase, or your money back.

J. G. Brenner

DRY GOODS, CLOTHING, SHOES, LADIES'
READY-TO-WEAR GARMENTS

Ladies' rest room on balcony floor

PHONE 70

HAYS, KANSAS

BUILD A HOME

REMEMBER that it takes more than bare walls. You will need all sorts of supplies. You'll need doors, windows, mantels, etc. We carry a large stock of all kinds of Builders' Supplies, and can furnish you anything you may need, from the cheapest to the best.

*Don't Buy Until You See Our Stock—
We Can Interest You*

We also handle the best grades of Hard and Soft Coal, and will deliver to you at the lowest prices considering the quality.

TREAT, SHAFFER & COMPANY

Our Phone is 74

Please remember us when in the market for Coal and Lumber

H. HAVEMANN, *Manager*

OUR TREAT—

UNUSUAL VALUE in
PACKAGE CHOCOLATES
is OUR TREAT to YOU

ANNIVERSARY CHOCOLATES
contain the cream of materials and
50 years' skill in knowing how.



Chase's

ANNIVERSARY PACKAGE

Remember Her With One

BISSING BROS.

*Cleaning, Pressing,
Tailoring and Dyeing*

We have one of the largest and best
equipped cleaning plants in Western
Kansas. We give you absolutely
the best in cleaning, pressing, repair-
ing and all kinds of alteration. All
garments are absolutely odorless
after going through our process.
Our prices are reasonable. For
out-of-town customers, we pay
Parcel Post charges.


PHONE 208

202 S. CHESTNUT ST.

SCHERMERHORN'S

Exclusive Stores for Women

HAYS

WILSON

ELLSWORTH

KANSAS

WALTERS & GOETZ

TRANSFER AND STORAGE

WE MOVE, STORE, PACK AND SHIP

*Prompt Transfer Service
Day or Night*



RESIDENCE PHONE—802 AND 732

OFFICE PHONE 18

HAYS, KANSAS

Oshants' Variety Store

5c AND 10c MERCHANDISE, NOTIONS, SCHOOL
SUPPLIES, CANDY, TOYS, READY-TO-WEAR,
HOSIERY, BATCHING SUPPLIES

A LITTLE MORE, A LITTLE BETTER, FOR A LITTLE LESS

Headquarters for

*STYLISH CLOTHING AND SHOES FOR THE
COLLEGE MAN
COLLEGIAN CLOTHES J. C. ROBERTS SHOES*

A. H. OEHLER

One Just Price

Just One Price

\$1.00 Free

To every person who reads this advertisement—Bring in \$3.00 worth of clothes and we will clean and press them for \$2.00.



John M. Miller

Cleaners and Pressers

PHONE 128

Mark Every Grave

with

*HOCH QUALITY
MEMORIALS*

MANUFACTURED BY

*Hoch Monument
Works*



HAYS, KANSAS

J. F. HOCH, *Prop.*

T. G. Reed & Sons

Pure Food Products

We've Got It, We'll Get It,
Or It Isn't to be Had

MEATS, GROCERIES
and
FRESH VEGETABLES



PHONE 169-481

HAYS

KANSAS

W. B. DANIELS

Dentist



Office in Reeder Building

PHONE 351 HAYS, KANSAS

ELITE CAFE

Try one of our home cooked
MEALS

\$5 MEAL TICKET FOR \$4.00

WEST NORTH MAIN

HAYS

KANSAS

EVERYTHING FOR THE SNAPPY DRESSER

FLORSHEIM SHOES
ARROW SHIRTS
PHOENIX HOSIERY
KEYSTONE TROUSERS




Leikers

*and everything to supply you in the
way of Men's Furnishings*

HAYS, KANSAS



*For The
Graduate*

 *Elgin Watches*

The ELGIN

The true gift is useful as well as
ornamental

In a good watch you get both
qualities

We carry a full and up-to-date stock of

JEWELRY
SILVERWARE CUT GLASS
HAND-FINISHED CHINA
JEWELRY NOVELTIES
MANTLE WATCHES

J. T. Morrison

Jeweler and Optometrist

105 N. CHESTNUT

PHONE 152

Your Surest Stores

66 prosperous progressive stores
doing business in Six States Selling

DRY GOODS
READY-TO-WEAR
MEN'S FURNISHINGS
SHOES, HOSE, NOTIONS
NOVELTIES

Buy where you know the quality is
high and the price is low. You take
no chance when you buy from a
large institution built on value.



J. B. Byars Co.

HAYS, KANSAS

GEO. S. GRASS, JR.

E. B. GRASS

Grass Brothers

Everything to

Eat



PHONE 4, 497

HAYS, KANSAS

THINK OF THE



Service First

115 W. 2ND HAYS, KANSAS

When your clothes need Tailoring,
Cleaning, Pressing or Repairing

*We Clean Everything
from Gloves to Rugs*



Postage paid one way on all
out-of-town orders

PHONE 12

HAYS

HILL'S

*The Home of Good
Things to Eat*

Our quality merchandise and willing service
make this store one which you
should patronize

WE CATER TO THE COLLEGE TRADE

Phone 432

We Deliver

Shelley's Quick Lunch

HAMBURGERS, 5c and 10c

COLD DRINKS—SHORT ORDERS

"Buy 'em by the Sack"



Next door to Red's Clean Shop

N. CHESTNUT ST.

HAYS

"KANSAS GROWS THE BEST WHEAT IN THE WORLD"

SENIORS:

You are at the end of your college career. In a few months from now you may be a superintendent of a school, or an athletic coach, or you may be engaged in some other work of a public nature. It may fall to your lot to give advice on foods. Then remember that bread is the staff of life.

*Bread made from
SEMOLINO FLOUR
is unsurpassed*

SOLD BY ALL LEADING GROCERS

Manufactured by
THE HAYS CITY FLOUR MILLS
HAYS, KANSAS

ELECTRICITY

Is man's Greatest Servant
POWER HEAT
LIGHT
at the turn of the switch



Central Kansas
POWER CO.

The Western Office Equipment Co.

HAYS, KANSAS

PORTABLE AND STANDARD TYPEWRITERS—ADDING MACHINES

Our typewriters are guaranteed to you in every respect. You are the judge. Write us or see us for your wants. Equipment and fixtures for stores, school, bank, and offices.

*Our Aim: TO SERVE AND EQUIP WESTERN KANSAS BETTER
GUARANTEED REPAIR WORK ON ALL MACHINES*

ONE DOLLAR saved is more value than one spent. You can save it by letting us Rebuild your Worn Shoes

Schlegel Shoe Service

Our Work Guaranteed

113 N. MAIN

HAYS

THE W. O. ANDERSON COMMISSION CO.

HAYS, KANSAS



WHOLESALE FRUIT AND PRODUCE
Our Motto: "Quality and Service"
If it grows, we sell it

PHONE L. D. 449

LOCAL PHONE 454

A PORTRAIT

*Sent to the absent ones now
and then, binds the friend-
ship of youth, bridges dis-
tance and knits closer the
ties of Family and Kinship.*

Our fast lenses, modern equipment, prompt attention and courtesy to patrons have made sitting for Photographs a real pleasure.



Our prices are consistent with the high quality of our work.
Make that appointment today.

SPERRY - FERRIS STUDIO

HAYS, KANSAS

PHONE 460

118 E. JUNIATA

Czeskleba Music and Optical Store

The HOME of BETTER MUSIC
and OPTICAL SERVICE



H A Y S , K A N S A S

THAT
Milady of the Campus

May be well groomed
Shampoos, Marcells,
Manicures and
Water Waves

College Beauty Shoppe
at MACK'S COLLEGE SHOP

VERNITA YOUNG, Operator



Butter cream
center; covered
with caramel,
peanuts and
chocolate.

LOOSE-WILES COMPANY



THE END