

Fort Hays State University

## FHSU Scholars Repository

---

Block & Bridle Club Scrapbooks

Archives Online

---

1997

### FHSU Block & Bridle Club Scrapbook: 1996-1997

FHSU Block & Bridle Club

Follow this and additional works at: <https://scholars.fhsu.edu/blockbridle>

---

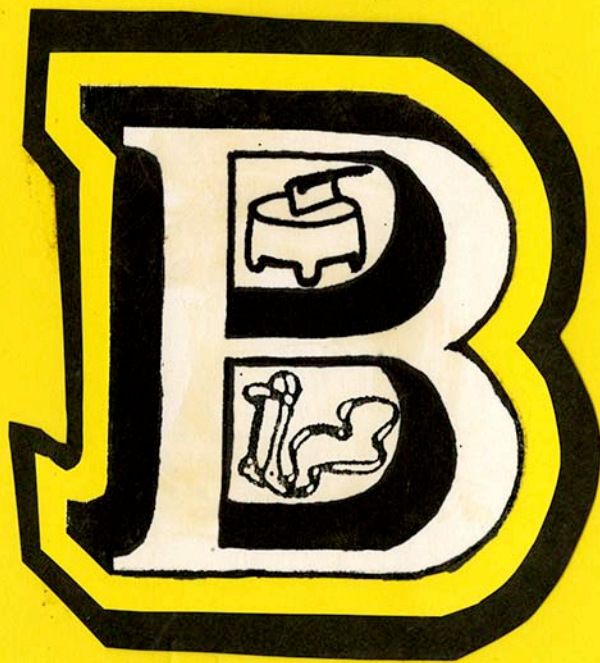
#### Recommended Citation

FHSU Block & Bridle Club, "FHSU Block & Bridle Club Scrapbook: 1996-1997" (1997). *Block & Bridle Club Scrapbooks*. 12.

<https://scholars.fhsu.edu/blockbridle/12>

This Scrapbook is brought to you for free and open access by the Archives Online at FHSU Scholars Repository. It has been accepted for inclusion in Block & Bridle Club Scrapbooks by an authorized administrator of FHSU Scholars Repository.

**FHSU**



1996

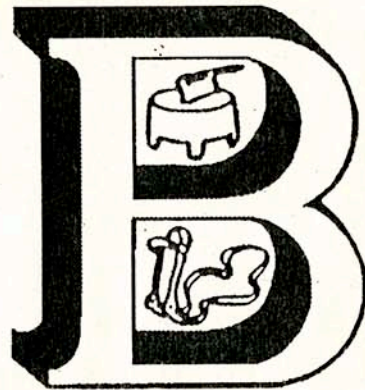
1997

*Making Our Mark -*

2006-8-9

T A B L E O F C O N T E N T S

INTRODUCTION.....	1
OFFICERS.....	2
ADVISORS.....	3
MEMBERSHIP LIST.....	4
MINUTES.....	5
TREASURER'S REPORT.....	6
LIST OF ACTIVITIES.....	9
JUDGING CONTESTS.....	10
PUBLICITY.....	16
CLUB ACTIVITIES.....	20
NATIONAL CONVENTION.....	26
LITTLE INTERNATIONAL.....	28
COMMUNITY ACTIVITIES.....	38
LEISURE ACTIVITIES.....	42



The Block & Bridle Emblem is significant to club members. It represents the principles on which the club is built. Character, sincerity and a moral life are asked of all members when they join and are depicted by the perpendicular lines of the "B". The distinct curves of the "B" are symbolic of the social pleasure, mental energy and determination of members.

The meat block represents the material aspects of our lives. The bridle stands for the behavior of Block & Bridle members; the control over ourselves that we try to maintain, the respect and mannerisms we show toward others, and the way we treat our animals.



Welcome to Fort Hays State University located in Hays, Kansas. The University is home to about 6,000 students. Our Block and Bridle Club membership of 101 students makes us one of the largest student organizations on campus.

Our members made their mark this year by incorporating several new activities that were huge successes. They also continued participating with old activities as well. Whether the members made their mark by producing the first annual Club Calf Sale or by giving the future generations a chance to make their mark through Agricultural Awareness Days, they all came away with a feeling of triumph and confidence that they were able to contribute to the organization. The following pages describe how our members were able to make their mark.

# OFFICERS



Tish Busby, Secretary; Tammy Gerlits, Vice-president;  
Jennifer Watkins, Treasurer; Brian Schafer, President



Brian Schafer  
Office: President  
Classification: Senior  
Major: Animal Science  
Hometown: Culbertson, Nebraska



Tammy Gerlits  
Office: Vice-president  
Classification: Senior  
Major: Ag Business  
Hometown: Lenora, Kansas



Jennifer Watkins  
Office: Treasurer  
Classification: Senior  
Major: Finance  
Hometown: Meade, Kansas



Tish Busby  
Office: Secretary  
Classification: Senior  
Major: Elementary Education  
Hometown: St. Francis, Kansas

# ADVISORS



Dr. Sandra K. Johnson  
Assistant Professor of Agriculture  
B.S., University of Nebraska-Lincoln, 1982  
M.S., University of Missouri-Columbia, 1984  
Ph.D., West Virginia University, 1991

Dr. John R. Greathouse  
Associate Professor of Agriculture  
Chair, Department of Agriculture  
B.S., Kansas State University, 1980  
M.S., *ibid*, 1982  
Ph.D., Colorado State University, 1985

# 1996-97 MEMBERS

Sky Baumann  
Leland Baxa  
Kristin Bemis  
Mike Bowman  
Kerry Bowman  
Mandy Brandenburg  
Jared Breinig  
Becki Brooks  
Billie Brown  
Sara Burghart  
Tish Busby  
Tina Bussen  
Ryan Bussman  
Philip Butler  
Tenille Caprez  
Cheryl Clarke  
Rhiannon Corn  
Kolleen Leiker  
Nels Lindsberg  
Randy Lix  
Josh Lowrie  
Tanya Lucore  
Greg May  
Steve McFall  
Terry Miller  
Todd Miller  
Jamie Mountain  
Tiffany O'Neill  
Brad Painter  
Ryan Parker  
C.J. Pfannenstiel  
Becky Poore  
Russell Pope  
Corey Powell

Tammy Dechant  
Todd Dickerson  
Gabe Doll  
Matt Dreiling  
Shawna Eberle  
Shane Edwards  
Tammy Elsen  
Chirs Eubank  
Pete Feyerabend  
Bryon Foose  
Tammy Gerlits  
Brian Gertsberger  
Jason Gerstberger  
Becky Goracke  
Sarah Gower  
Melissa Graham  
Jason Hageman  
Todd Ragsdale  
Rebecca Rahe  
Jana Ramononda  
Craig Rees  
Kevin Rippe  
Brandon Roy  
Darren Rubottom  
Sharla Rubottom  
Brian Schafer  
Beth Schaller  
Windy Scheck  
Scott Schmeidler  
Dale Seeman  
Brandon Seifried  
Amanda Shaver  
Elodie Sheesley  
Bryan Shoemaker

Jared Haggard  
Jeff Hammons  
Michelle Hattrup  
Grant Havel  
Summer Hemphill  
Sara Hibbard  
Cody Hill  
Jim Hoffman  
Kim Holub  
Donnetta Hoss  
David Huff  
Heather Johnson  
Ed Johnson  
Kelly Kasey  
Sarah Kindt  
Sayre Klaus  
Troy Laughlin  
Jerrod Smith  
Mark Sorensen  
Shelia Stannard  
Shelley Strong  
Kristi Strong  
Kate Sunderland  
Martha Tatro  
Lukes Thielenhaus  
Shannon Tinkel  
Marcella Warner  
Jennifer Watkins  
Ryan Wiesner  
Roy Winklepleck  
Tammy Wittman  
Mike Zach  
Darin Zimmer



# MINUTES

Block and Bridle

April 16, 1997

The April 16th Meeting of Block and Bridle was called to order by President Schafer. Secretary Busby read the minutes and Treasurer Watkins gave the on-campus balance of \$ 3,411.74 and an off-campus balance of \$ 2,997.29.

Sara Hibbard discussed Ag Awareness Days to be held May 1st and 2nd. She said that approximately 500 students would be attending. She also asked for volunteers and said to talk to her after the meeting was adjourned, if you are interested in helping.

Grant Havel and Dale Seeman discussed the upcoming Little "I". They informed all contestants that they should be working with their animal as the contest is on Saturday. They also said that a chairman will be at the Pavillion all night Friday so that you can work with your animals and get them ready at any time.

Additional nominations were accepted for 1997-98 officers and elections were held. The 1997-98 officers are Mark Sorenson, President; Jason Gerstberger, Vice-President; Becky Brooks, Secretary; Sara Hibbard, Treasurer; Kerry Bowman and Donetta Hoss, Historian; Todd Miller and Summer Hemphill, Publicity; Brian Gerstberger, Little "I" Chair; Jared Breinig, Little "I" Assistant; Brandon Seifried, JUCO Chair; Matt Dreiling, Dairy Chair; Randy Lix, Livestock Chair; and Sara Burghart and Amanda Shaver, Ag Awareness.

Matt Dreiling moved that the meeting be adjourned and Shelia Stannard seconded the motion. The meeting was adjourned.

Tish Busby

*Tish Busby*  
FHSU Block and Bridle Secretary

# TREASURER'S REPORT

	95/96		96/97 (* estimates)		Proposed 97/98	
	Revenue	Expense	Revenue	Expense	Revenue	Expense
DUES	\$1,065	\$360	\$827	\$215	\$1,000	\$310
FALL SMOKER	\$0	\$232	\$0	\$167	\$0	\$250
SPRING SMOKER	\$0	\$82	\$0	\$200 *	\$0	\$200
HOLIDAY PARTY	\$520	\$475	\$200	\$375	\$500	\$475
INTRAMURALS	\$0	\$60	\$0	\$60 *	\$0	\$40
NEW MEMBERS	\$240	\$478	\$334	\$428	\$300	\$500
<b>** MISCELLANEOUS</b>						
Mail Service	\$0	\$223	\$0	\$300 *	\$0	\$300
Film Processing	\$0	\$252	\$0	\$200 *	\$0	\$250
Office Supplies	\$0	\$71	\$0	\$300 *	\$0	\$250
Scrapbook	\$0	\$105	\$0	\$45	\$0	\$150
Allocations	\$700		\$800		\$800	
<b>FUND RAISERS</b>						
Hats	\$158	\$0	\$434	\$476 *	\$150	\$0
Shirts	\$162	\$153	\$0	\$0	\$190	\$180
Donations	\$1,185	\$520	\$1,000	\$0 *	\$1,500	\$500
<del>Southwest Dairy Judging</del>	\$40	\$0	\$84	\$27	\$50	\$0
Homecoming/Oktoberfest	\$230	\$34	\$122	\$20	\$250	\$50
<b>** AG AWARENESS DAY</b>	\$0	\$800	\$0	\$800 *	\$0	\$800
Allocations	\$800		\$800		\$800	
<b>** JUDGING TEAM</b>	\$0	\$4,500	\$0	\$4,500 *	\$0	\$4,500
Allocations	\$2,050		\$2,100		\$4,500	
<b>CLUB CALF SALE</b>						
Advertising	\$0	\$0	\$0	\$1,450	\$0	\$1,500
Auctioneer	\$0	\$0	\$0	\$600	\$0	\$600
Commissions	\$0	\$0	\$2,429	\$0	\$2,900	\$0
<del>Concessions</del>	\$0	\$0	\$199	\$319	\$350	\$250
Equipment/Supplies	\$0	\$0	\$0	\$412	\$0	\$250
Allocations	\$0		\$0			
<b>NATIONAL MEETINGS</b>						
<b>** Transportation</b>	\$0	\$1,146	\$0	\$2,073	\$0	\$1,094
Meals	\$0	\$1,440	\$0	\$840	\$0	\$450
<b>** Motel</b>	\$0	\$1,091	\$0	\$1,331	\$0	\$1,422
<b>** Registration</b>	\$0	\$3,432	\$0	\$1,540	\$0	\$3,750
Allocations	\$2,500		\$2,700		\$4,200	
<b>REGIONAL MEETINGS</b>						
<b>** Milage</b>	\$0	\$0	\$0	\$52	\$0	\$190
Meals	\$0	\$0	\$0	\$81	\$0	\$960
<b>** Motel</b>	\$0	\$0	\$0	\$85	\$0	\$585
<b>** Registration</b>	\$0	\$0	\$0	\$120	\$0	\$360
Allocations	\$0		\$250		\$1,500	
<b>LITTLE INTERNATIONAL</b>						
<b>** Judges</b>	\$0	\$500	\$0	\$500 *	\$0	\$500
Awards	\$2,038	\$2,038	\$2,200	\$2,200 *	\$2,250	\$2,250
Banquet	\$1,477	\$1,477	\$2,100	\$2,100 *	\$2,200	\$2,200
Dance	\$500	\$300	\$500	\$400 *	\$500	\$450
<b>** Equipment</b>	\$0	\$1,292	\$0	\$1,000 *	\$0	\$1,000
Allocations	\$1,000		\$1,100		\$1,500	

	95/96		96/97 (* estimates)		Proposed 97/98	
	Revenue	Expense	Revenue	Expense	Revenue	Expense
<b>JUCO CONTEST</b>						
** Judges	\$0	\$900	\$0	\$900	\$0	\$900
Awards	\$0	\$608	\$0	\$471	\$0	\$625
Lunches	\$0	\$344	\$0	\$493	\$0	\$350
Entry Fee	\$1,112	\$0	\$1,200	\$0	\$2,000	\$0
Banquet	\$0	\$732	\$0	\$643	\$0	\$750
Allocations	\$900		\$900		\$900	
<b>FFA LIVESTOCK JUDGING</b>						
** Judges	\$0	\$300	\$0	\$300 *	\$0	\$300
Awards	\$0	\$563	\$0	\$600 *	\$0	\$600
Food	\$0	\$301	\$0	\$325 *	\$0	\$325
Entry Fee	\$480	\$0	\$510	\$0 *	\$680	\$0
Allocations	\$300		\$300		\$300	
<b>FFA DAIRY JUDGING</b>						
** Judges	\$0	\$50	\$0	\$50	\$0	\$50
Awards	\$0	\$482	\$0	\$546	\$0	\$550
Food	\$0	\$168	\$0	\$244	\$0	\$200
Entry Fee	\$684	\$0	\$507	\$0	\$676	\$0
Allocations	\$50		\$50		\$50	
<b>SUBTOTAL (Without Allocations)</b>	<b>\$9,890</b>	<b>\$25,508</b>	<b>\$12,646</b>	<b>\$27,787</b>	<b>\$15,496</b>	<b>\$31,216</b>
STUDENT CONTRIBUTIONS	\$7,317				\$1,170	
<b>SUBTOTAL + STUDENT CONTRIB</b>	<b>\$17,208</b>	<b>\$25,508</b>	<b>\$12,646</b>	<b>\$27,787</b>	<b>\$16,666</b>	<b>\$31,216</b>
** SGA ALLOCATIONS	\$8,300		\$9,000		\$14,550	
<b>GRAND TOTAL</b>	<b>\$25,508</b>	<b>\$25,508</b>	<b>\$21,646</b>	<b>\$27,787</b>	<b>\$31,216</b>	<b>\$31,216</b>
* = estimates			President: Brian Schafer			
** = SGA allocations used for or planned usage			Treasurer: Jennifer Watkins			
			Advisor: Dr. Sandy Johnson (628-4015)			
			Advisor: Dr. John Greathouse (628-4196)			

# MEETINGS



# 1996-1997 ACTIVITIES

Welcome Back to School Picnic

Initiate Dance

Endowment Association Telethon

FHSU Promotion Booth, Kansas State Fair

Judging Contests

Northwest District FFA Dairy

Junior College Livestock

Southwest District FFA Dairy

Northwest District FFA Livestock

\* Homecoming Booth

\* Ag Olympics

\* Club Calf Sale

\* Christmas Caroling

Christmas Dance

Special Olympics

National Meeting--January 24-27, 1997

12 members attended meetings in Orlando, Florida

Ag Awareness Day

End of Year Picnic

Speakers:

Lee Leachman, Billings, Montana

"Do you have a Future in the Business of Agriculture?"

Temple Grandin, Colorado State University

"Livestock Handling"

\* Indicates new activities.

# **JUDGING CONTESTS**

**NORTHWEST DISTRICT FFA DAIRY**

**JUNIOR COLLEGE LIVESTOCK**

**SOUTHWEST DISTRICT FFA DAIRY**

**NORTHWEST DISTRICT FFA LIVESTOCK**

# NORTHWEST DISTRICT FFA DAIRY JUDGING CONTEST

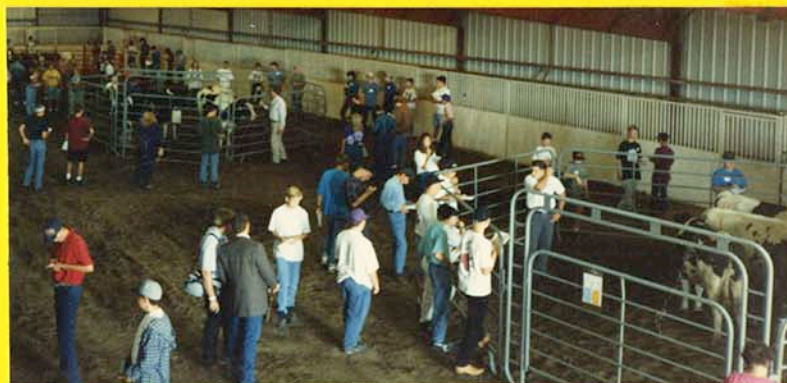


# JUNIOR COLLEGE LIVESTOCK JUDGING CONTEST





# SOUTHWEST DISTRICT FFA DAIRY JUDGING CONTEST



# NORTHWEST DISTRICT FFA LIVESTOCK JUDGING CONTEST



# **PUBLICITY**

**BACK-TO-SCHOOL PICNIC**

**STATE FAIR**

**HOMECOMING BOOTH**



# BACK-TO-SCHOOL PICNIC



Each year the Block & Bridle Club helps serve the Back-to-School Picnic, which is open to the entire student body. This gives students, both new and old, the chance to know the club is available for them to join.

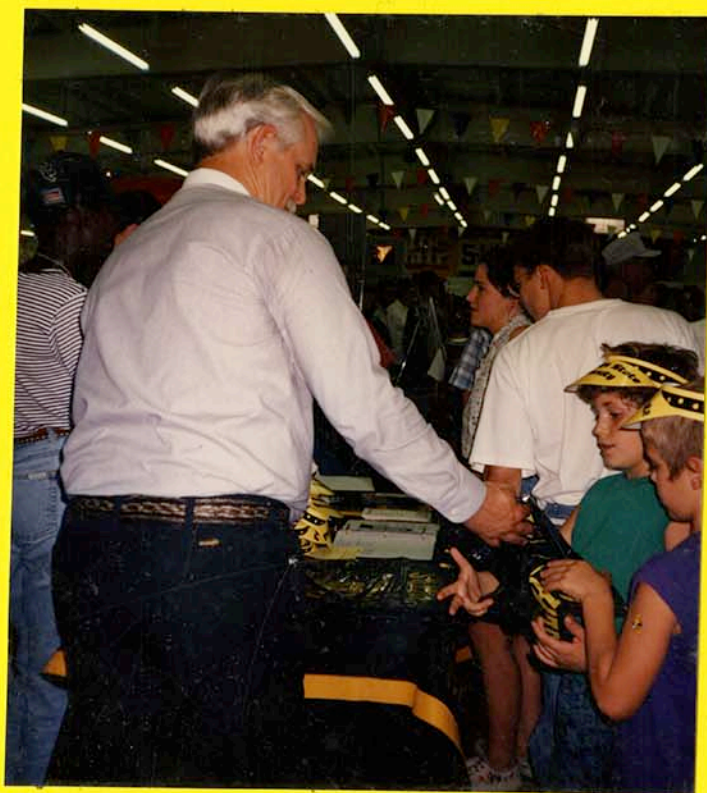


The club received extra publicity when a local radio station interviewed President Brian and Vice-president Tammy regarding what Block & Bridle is, and what it does.



# STATE FAIR

At the Kansas State Fair each fall, Block & Bridle members and advisors sit at the Fort Hays State promotion booth to bring in prospective members and students.



# HOMECOMING BOOTH

As a new activity, Block & Bridle sponsored a cow-milking booth at Hays' annual Oktoberfest celebration. People could milk a cow for a dollar. This attracted both young and old, because some of the youth had never seen a dairy cow, and it brought back memories for the elders. By the end of the day, many bragged, "I milked a cow!"



# **CLUB ACTIVITIES**

**WELCOME BACK BBQ**

**AG OLYMPICS**

**SPEAKER**

**CLUB CALF SALE**

**NATIONAL CONVENTION**

**LITTLE INTERNATIONAL**



# WELCOME BACK BBQ

A welcome back BBQ is held for the returning Block & Bridle members and potential initiates. At the meeting everyone is introduced so that new members have the opportunity to get acquainted with everyone. After the meeting, everyone heads straight for a delicious meal.



# AG OLYMPICS

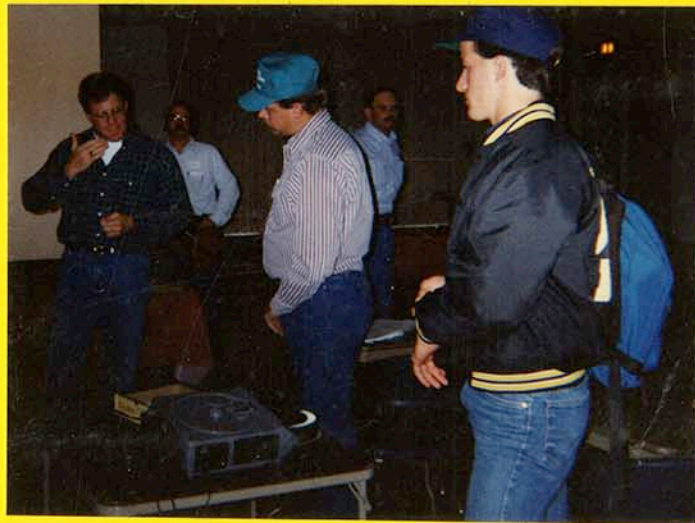


# SPEAKER

LEE LEACHMAN of Billings, Montana



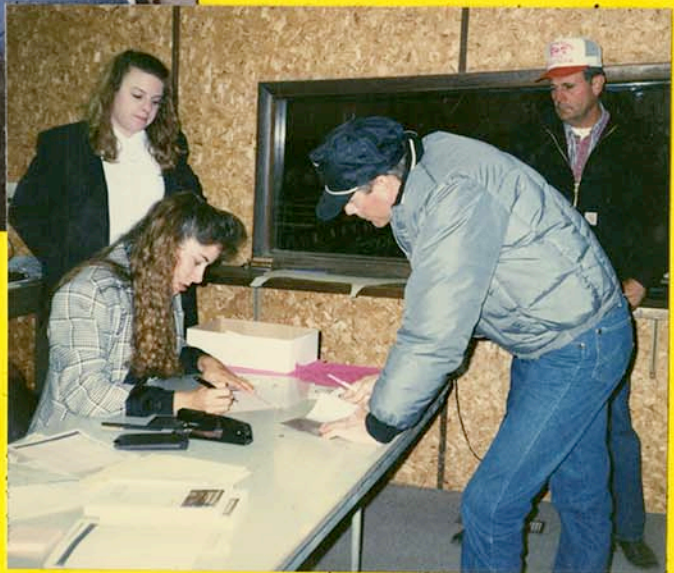
“Do you have a Future in the  
Business of Agriculture?”



# CLUB CALF SALE

The newest and possibly biggest event of the year was the Prospect Show Steer and Heifer Sale. This event took a lot of time and effort from not only the committee, shown below, but also the entire club. Consignors and buyers came from all across Kansas, and from Colorado and Nebraska. The first sale was successful, and the club hopes to make this an annual event.





# NATIONAL CONVENTION

In January, twelve members and one advisor traveled to Orlando, Florida, to attend the 1997 Block & Bridle National Convention. While in Florida, they attended meetings, listened to speakers, learned about Florida's agriculture, and still had time to sight-see. The group enjoyed themselves as they met with people from all over the United States and learned about the wide variety offered in the field of agriculture.



**B&B'97**  
Welcome To Orlando!



# LITTLE INTERNATIONAL

On April 19, 1997, the Block & Bridle Club hosted the 24th Annual Little International Fitting and Showing Contest. The event is open to all students enrolled in the university full time. This year the chair for the event was Grant Havel, who was assisted by Dale Seeman. A lot of hard work was put into the preparation for the show by all members, participants, officers and sponsors.





# LITTLE INTERNATIONAL BANQUET

APRIL 19, 1997

6:00 p.m.

WELCOME .....	Brian Schafer
INVOCATION .....	Brian Schafer
DINNER .....	Ham & Roast Beef Buffet
RECOGNITION OF SPECIAL GUESTS .....	Dr. John Greathouse
RECOGNITION OF 1996-1997 OFFICERS .....	Brian Schafer
INTRODUCTION OF 1997-1998 OFFICERS .....	Brian Schafer
SLIDE PRESENTATION .....	Donnetta Hoss Kerry Bowman
PRESENTATION OF AWARDS	
Graduate of Distinction Award .....	Dr. John Greathouse
Club Awards .....	Dr. John Greathouse
	Dr. Sandy Johnson
Little "T" Awards .....	Grant Havel

Everyone is welcome to attend the dance immediately following the banquet at the Knights of Columbus Hall in Schoenchen, KS

## AWARD WINNERS

### Swine

Grand Champion \_\_\_\_\_  
Reserve Champion \_\_\_\_\_  
Champion Novice \_\_\_\_\_

### Dairy

Grand Champion \_\_\_\_\_  
Reserve Champion \_\_\_\_\_  
Champion Novice \_\_\_\_\_

### Horse

Grand Champion \_\_\_\_\_  
Reserve Champion \_\_\_\_\_  
Champion Novice \_\_\_\_\_

### Sheep

Grand Champion \_\_\_\_\_  
Reserve Champion \_\_\_\_\_  
Champion Novice \_\_\_\_\_

Grand Champion Overall \_\_\_\_\_  
Reserve Champion Overall \_\_\_\_\_  
Grand Champion Team \_\_\_\_\_

Reserve Champion Team \_\_\_\_\_  
\_\_\_\_\_  
\_\_\_\_\_

### Beef

Grand Champion \_\_\_\_\_  
Reserve Champion \_\_\_\_\_  
Champion Novice \_\_\_\_\_  
Outstanding Herdsman Award \_\_\_\_\_

## 1997 Little "I" Showmen

### Swine

330	Leland Baxa	362	Tiffany O'Neill
332	Mandy Brandenburg	363	Kalyn Osthoff
336	Travis Brunner	365	Russell Pope
338	Sara Burghart	366	Suzann Pryor
339	Tish Busby	367	Jana Ramonda
341	Philip Butler	368	Sarah Robben
342	Rhiannon Corn	369	Chad Rupp
344	Brooke Davis	370	Brian Schafer
345	Matt Dreiling	372	Brandon Seifried
347	Bryon Foose	373	Amanda Shaver
348	Lynnlea Fryman	374	Laurie Shaver
351	Melissa Graham	375	Cindy Shook
357	Ed Johnson	377	Sheila Stannard
358	Josh Lowrie	378	Martha Tatro
360	Terry Miller	379	Jennifer Watkins
361	Jamie Nurnberg		

### Sheep

331	Kerry Bowman
343	Amanda Davis
347	Bryon Foose
353	Summer Hemphill
358	Josh Lowrie
360	Terry Miller
361	Jamie Nurnberg
362	Tiffany O'Neill
363	Kalyn Osthoff
364	Becky Poore
367	Jana Ramonda
369	Chad Rupp
370	Brian Schafer
371	Michelle Schroeder
372	Brandon Seifried
378	Martha Tatro
380	Tammy Wittman

### Dairy

331	Kerry Bowman
335	Chad Brummer
343	Amanda Davis
345	Matt Dreiling
346	Patrica Duffy
351	Melissa Graham
353	Summer Hemphill
354	Phil Hendrickson
355	Jennifer Hendrickson
370	Brian Schafer
371	Michelle Schroeder
375	Cindy Shook
380	Tammy Wittman

### Horse

346	Patrica Duffy
348	Lynnlea Fryman
349	Tammy Gerlits
350	Brian Gerstberger
351	Melissa Graham
362	Tiffany O'Neill
367	Jana Ramonda
375	Cindy Shook
381	Anne Woods

### Beef

331	Kerry Bowman
333	Jared Breinig
334	Becki Brooks
337	Joe Burgardt
347	Bryon Foose
356	Sara Hibbard
359	Tanya Lucore
362	Tiffany O'Neill
365	Russell Pope
366	Suzann Pryor
369	Chad Rupp
370	Brian Schafer
372	Brandon Seifried
379	Jennifer Watkins

## Little "I"

Chair Grant Havel  
 Assistant Dale Seeman

## Beef

Judge Tim Zenger  
 Chair Jason Gerstberger  
 Assistant Philip Butler

## Dairy

Judge Randy Huser  
 Chair Mark Sorensen  
 Assistant Matt Dreiling

## Horse

Judge James Kirby  
 Chair Tanya Lucore  
 Assistant Tammy Gerlits

## Sheep

Judge Noel Ketzner  
 Chair Tish Busby  
 Assistant Rhiannon Corn

## Swine

Judge Val Reiss  
 Chair Brian Gerstberger  
 Assistant Brandon Seifried

## Banquet

Chair Sara Hibbard  
 Assistants Heather Johnson  
 Becky Poore  
 Jennifer Watkins

## Lunch

Chair Laurie Shaver

### 1997 Little "I" Awards Donors

**GOLD (over \$150)**

Bar-B Tack, Etc.  
 Ellis County Dairy Supply  
 Fitzsimmons Farms  
 Al Graf  
 Murphy Family Farms  
 Ochs, Inc.  
 TL Cattle, Co

**BRONZE (under \$50)**

Ellis County Feeders  
 Emprise Bank  
 Robin Graver  
 Offerle National Bank  
 Andy Riegel  
 Jack Schmitt  
 Gary Shapland  
 United Ag Services, Inc.  
 Denise Youtsey

# NATIONAL BLOCK & BRIDLE CLUB

## OUR BEGINNING

December 2, 1919, student representatives from four animal husbandry clubs met in Chicago and formed the National Block & Bridle Club. The local clubs became chapters in the new national organization. These charter chapters were Iowa, Kansas, Missouri, and Nebraska. The roster of Block & Bridle clubs has since grown throughout the United States to ninety-three members. The objectives of the organization are:

1. To promote higher scholastic standing among animal science students.
2. To promote animal science, especially all phases of animal science work in colleges & universities.
3. To bring about a closer relationship among students pursuing some phase of animal science as a profession.

## THE EMBLEM

The perpendicular of the **B** represents straight moral characteristics, sincerity, and honor. The two curves required to complete the letter **B** represent the fundamentals upon which we base our social pleasure, mental energy, and moral force. The meat block represents the material aspects of our life. The bridle stands for the behavior of B&B members, the control over ourselves that we try to maintain, the mannerisms and respect we show toward others, and the way which we treat animals.

## BLOCK & BRIDLE CLUB OFFICERS

### 1996-1997

President  
Vice President  
Secretary  
Treasurer  
Historian  
  
Publicity  
  
JUCO Chair  
Little "T" Chair  
Assistant  
Club Calf Sale Chair  
Dairy Chair  
Ag. Awareness Chair  
  
FFA Livestock

Brian Schafer  
Tammy Gerlits  
Tish Busby  
Jennifer Watkins  
Donnetta Hoss  
Kerry Bowman  
Tanya Lucore  
Sara Hibbard  
Brandon Seifried  
Grant Havel  
Dale Seeman  
Tammy Gerlits  
Bryon Foose  
Sara Hibbard  
  
Sheila Stannard

### 1997-1998

President  
Vice President  
Secretary  
Treasurer  
Historian  
  
Publicity  
  
JUCO Chair  
Little "T" Chair  
Assistant  
Club Calf Sale Chair  
Dairy Chair  
Ag. Awareness Chairs  
  
FFA Livestock

Mark Sorensen  
Jason Gerstberger  
Becki Brooks  
Sara Hibbard  
Kerry Bowman  
Donnetta Hoss  
Todd Miller  
Summer Hemphill  
Brandon Seifried  
Brian Gerstberger  
Jared Breinig  
Brian Schafer  
Matt Dreiling  
Amanda Shaver  
Rhiannon Corn  
Randy Lix

## 1996-1997 BLOCK & BRIDLE CLUB FACTS

Number of initiates	60
Total club membership	103
% of non-Agriculture majors	42%

## 1996-1997 ACTIVITIES

Welcome Back to School Picnic  
Initiate Dance  
Endowment Association Telethon  
FHSU Promotion Booth, Kansas State Fair  
Judging Contests  
    Northwest District FFA Dairy  
    Junior College Livestock  
    Southwest District FFA Dairy  
Christmas Dance  
Special Olympics  
Little International Fitting & Showing Contest  
National Meeting - January 24-27, 1997  
    12 members attended meetings in Orlando, Florida

### Speaker

Lee Leachman - Billings, Montana  
    "Do you have a Future in the Business of Agriculture?"

## · COMING ACTIVITIES

April 24 - Northwest District FFA Livestock Judging Contest  
May 1 & 2 - Ag Awareness Day  
May 7 - End of year picnic  
June 10 - Speaker - Temple Grandin - "Livestock Handling"

## NEW ACTIVITIES

Ag Olympics  
Christmas Caroling  
Club Calf Sale  
Homecoming Booth

## CLUB AWARDS AND RECOGNITION

5th Place Scrapbook  
    National B&B meetings, Orlando, FL  
4th Place Chapter Activities  
    National B&B meetings, Orlando, FL

FHSU Block & Bridle  
1996-1997 Members

Sky Baumann  
Leland Baxa  
Kristin Bemis  
Mike Bowman  
Kerry Bowman  
Mandy Brandenburg  
Jared Breinig  
Becki Brooks  
Billie Brown  
Sara Burghart  
Tish Busby  
Tina Bussen  
Ryan Bussman  
Philip Butler  
Tenille Caprez  
Cheryl Clarke  
Rhiannon Corn

Tammy Dechant  
Todd Dickerson  
Gabe Doll  
Matt Dreiling  
Shawna Eberle  
Shane Edwards  
Tammy Elsen  
Chris Eubank  
Pete Feyerabend  
Bryon Foose  
Tammy Gerlits  
Brian Gerstberger  
Jason Gerstberger  
Becky Goracke  
Sarah Gower  
Melissa Graham  
Jason Hageman

Jared Haggard  
Jeff Hammons  
Michelle Hatstrup  
Grant Havel  
Summer Hemphill  
Sara Hibbard  
Cody Hill  
Jim Hoffman  
Kim Holub  
Donnetta Hoss  
David Huff  
Heather Johnson  
Ed Johnson  
Kelly Kasey  
Sarah Kindt  
Sayre Klaus  
Troy Laughlin

Kolleen Leiker  
Nels Lindsberg  
Randy Lix  
Josh Lowrie  
Tanya Lucore  
Greg May  
Steve McFall  
Terry Miller  
Todd Miller  
Jamie Mountain  
Tiffany O'Neill  
Brad Painter  
Ryan Parker  
C.J. Pfannenstiel  
Becky Poore  
Russell Pope  
Corey Powell  
Todd Ragsdale  
Rebecca Rahe  
Jana Ramonda  
Craig Rees  
Kevin Rippe

Brandon Roy  
Darren Rubottom  
Sharla Rubottom  
Brian Schafer  
Beth Schaller  
Windy Scheck  
Scott Schmeidler  
Dale Seeman  
Brandon Seifried  
Amanda Shaver  
Elodie Sheesley  
Bryan Shoemaker  
Jerrod Smith  
Mark Sorensen  
Sheila Stannard  
Shelley Strong  
Kristi Strong  
Kate Sunderland  
Martha Tatro  
Lukes Thielenhaus  
Shannon Tinkel  
Marcella Warner

Jennifer Watkins  
Ryan Wiesner  
Roy Winklepleck  
Tammy Wittman  
Anne Woods  
Michelle Young  
Mike Zach  
Darin Zimmer

Congratulations to our graduating seniors!  
 Thanks for many hours of dedicated work.

Tammy Elsen - Bangor, WI	Darren Rubottom - Ransom, KS
Bryon Foose - Stratton, CO	Sharla Rubottom - Liebenthal, KS
Jared Haggard - Burden, KS	Laurie Shaver - Dodge City, KS
David Huff - Norcatur, KS	Shelley Strong - Spearville,KS
Heather Johnson - Glasco, KS	Marcella Warner - Spearville, KS
Becky Poore - Stockton, KS	Mike Zach - Wayne, NE

#### HISTORY OF LITTLE I

Chairs	Chair	Round Robin Winner
1971 -	1984 - Neal Beetch	Les Shoemaker
1972 - Robert Siefkes	1985 - Greg Beetch	
1973 - Vernon Wenger	1986 - Jack Schmitt	
1974 - Bill Jones	1987 - Mark Hammeke	
1975 - Duane Kelly	1988 - Jay Brack	
1976 - Joe Cornwell	1989 - James Sechrist	
1977 -	1990 - Tim Zenger	Ed DeBauche
1978 -	1991 - Rob Rahe	Jayne Dick
1979 -	1992 - Brendon Osborn	
1980 -	1993 - Anita Sakala	Randy Huser
1981 -	1994 - Eric Dexter	Stacy Barth
1982 -	1995 - Aaron Lewis	Jason Wolff
1983 -	1996 - Amy DuBois	Brandon Seifried
	1997 - Grant Havel	

We are trying to compile some club history. If you can  
 make corrections or additions to the above information  
 please let us know.

## Judging Team

This year we have a new coach, Scott "Bronc" Barrows. He is from Ness City, Kansas and has judged on the Colby Community College National Champion Livestock Team in 1981 and was high Individual at the National Western Stock Show in Denver Colorado. At Kansas State University, he was a member of the 1983 National Champion Livestock Team and was High Individual at the National Horse Judging Contest in 1984. Bronc has great livestock judging experience and is looking forward to coaching the team in national competition.

### 1997 Junior Livestock Judging Team

Jared Breinig - *Araphoe, NE*  
Jason Dvorak - *Lacoma, MO*  
Adrien Hertel - *Bird City, KS*  
Quint Huncovsky - *Cuba, KS*  
Randy Lix - *Wright, KS*  
C.J. Pfannenstiel - *Ellis, KS*

### 1997 Contests

The judging team competed at the Kansas Beef Expo in Wichita on March 12. The Beef Expo is a tune-up for the National Association of Colleges and Teachers of Agriculture national competition April 26 at Panhandle State University. Next year, members will be competing at several fall and spring contests.

## Agriculture Department

### Faculty

Dr. John Greathouse, Chair  
Dr. Garry Brower  
Dr. Jean Gleichsner  
Dr. Sandy Johnson  
Dr. Neil Patrick  
Dr. Brent Spaulding  
Dr. Robert Stephenson  
Scott Barrows

### Student Government Association Senator

Melissa Graham

### Staff

Beef and Horse Unit Gary Rolland  
Crop Unit Steve Engelhardt  
Harland Werth  
Dairy Unit Stephanie Eckroat  
Mike Hammerschmidt  
Sheep and Swine Unit  
Kevin Huser  
Secretary Janet Knipp



## NAMA

The National Agri-Marketing Association (NAMA) is an organization of Fort Hays State University students and established business professionals involved in agriculture marketing, sales, journalism, and other related areas.

The FHSU NAMA chapter was formed in the fall of 1993 by interested students and professors.

Throughout this past year, members have worked on several fund raisers including participation in Ellis County Landfill "Litter Lotto" and selling T-shirts during Octoberfest. Funds were also raised by helping Dr. Patrick in a construction project. The members have used the funds for the National meeting. Members attended a Great Plains NAMA chapter

meeting in Wichita where the market presentation was given as a practice session. Convention in Nashville, TN where the market presentation was made in competition.

NAMA has proven to be very beneficial to students who are looking for employment; the organization has given them opportunities to speak with professionals one-on-one, thus enabling them to network with potential employers in the agriculture field.

President - Tom Wapp, Frankfort, KS  
Vice President - Tammy Gerlits, Lenora, KS  
Secretary - Marcella Warner, Spearville, KS  
Treasurer - Shawn Lindenman, Morland, KS  
Advisors - Dr. Brent Spaulding  
Dr. Neil Patrick

## Delta Tau Alpha

The honor society of Delta Tau Alpha recently returned from attending the 38th National Convention at Nicholls State University in Thibodaux, LA. Chapter President, Travis Crites and John Minet represented FHSU at the convention. The FHSU DTA Chapter won first place in the Corbus Book Competition, which is a yearbook of the chapter's activities (the chapter received a plaque and \$150). Chapter members participated in the Ag Quiz Bowl (15 teams competed), business meetings, an area tour of CAMECO (manufacturer of sugarcane equipment, tree harvesting equipment, and John Deere field sprayers) and social activities (crayfish feed and dance). Dr. Robert Stephenson continues to serve as National Treasurer (this will start his sixth year in that position).

President - Travis Crites, Idalia, CO  
Vice President - Melvin Rodarmel, St. John, KS (Fall)  
Marcella Warner, Spearville, KS (Spring)  
Secretary - Kate Shepard, Yates Center (Fall)  
Kurt Wilson, Hays, KS (Spring)  
Treasurer - Stephanie Helms, Linn, KS  
Advisor - Dr. Jean Gleichsner  
National Treasurer - Dr. Robert Stephenson

Over the past year, DTA has been active both on- and off- campus. The chapter participated in keeping 2-miles of adopted highway near Hays clean, the Homecoming Banner Contest, the Wellness Fair, the Endowment Phonathon, the Christmas Tree Angel Program and sponsored two pitch card tournaments. This spring the 4th Annual Ag Quiz Bowl was held with six teams testing their knowledge in the areas of plant science, soil science, animal science, and agribusiness. The team of Tammy Gerlits, Ty Gerlits, and Brian Gerstberger was victorious. The chapter has a web site at <http://www.fhsu.edu/agriculture/dta.html> to allow members and alumni access to current information about the chapter. In the upcoming year, the FHSU DTA Chapter will continue to serve the department, university, and community.

# SWINE



Grand Champion Swine Showman: Bryon Foose

Reserve Champion Swine Showman: Brian Schafer  
Champion Novice Swine Showman: Brian Schafer



# DAIRY



Grand Champion Dairy Showman: Brian Schafer

Champion Novice Showman: Brian Schafer

Not Pictured:

Reserve Champion Dairy Showman: Patricia Duffey

# BEEF



Grand Champion Beef Showman: Tanya Lucore

Reserve Champion Beef Showman: Brandon Seifried



Champion Novice Showman: Sara Hibbard

# HORSE



Grand CHampion Horse Showman: Jana Romanda



Reserve Champion Horse Showman: Brian Gerstberger

Not Pictured:

Champion Novice Horse Showman: Patricia Duffey

# SHEEP



Grand Champion Sheep Showman: Tiffany O'Neill



Reserve Champion Sheep Showman: Brandon Seifried

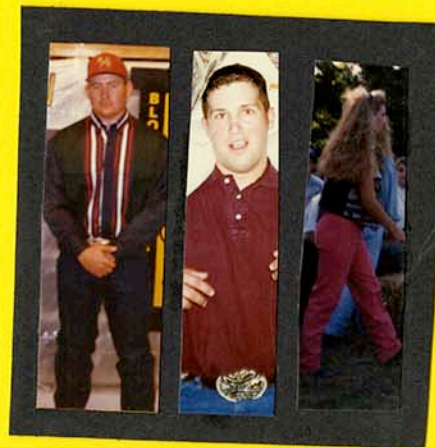
Champion Novice Sheep Showman: Brandon Seifried

# CHAMPIONS



Grand Champion Overall: Tiffany O'Neill

Grand Champion Team: Brian Schafer  
Brandon Seifried  
Tiffany O'Neill



# AWARDS



Outstanding Senior: Brian Schafer



Outstanding Soph/Jr.: Sara Hibbard

Not Pictured:

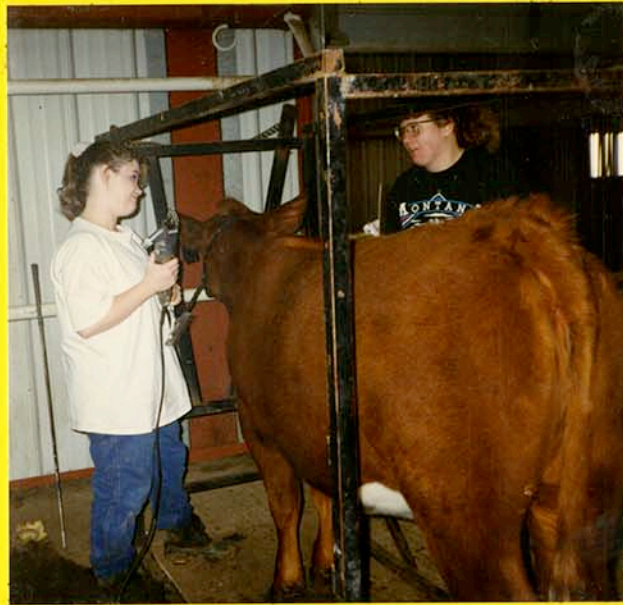
Workhorse Award: Grant Havel

Honorary Member: Gerry Forsythe



Outstanding Initiate: Brian Gerstberger





# DANCE

A Block & Bridle event would not be complete without a DANCE!!! After everyone enjoyed the delicious dinner of the Little International Awards Banquet, they drove 12 miles to Schoenchen, Kansas, to finish off the evening by relaxing and dancing the night away.



# COMMUNITY ACTIVITIES

ENDOWMENT ASSOCIATION TELETHON

AGRICULTURE AWARENESS DAY

OTHER

# ENDOWMENT ASSOCIATION TELETHON



Each year the Fort Hays State University Endowment Association works to raise money for scholarships for FHSU students by sponsoring a telethon. Block & Bridle helps with this annual event every year.



# AGRICULTURE AWARENESS DAY

Ag Awareness Day is a time for elementary school children to become aware of the agriculture scene. As shown, many students enjoyed petting the animals and asking questions about the animals. This day is prosperous for many of the kids, as they have fun and learn at the same time.



# OTHER

For the first time in Several Years, Block & Bridle went Christmas Caroling. The Nursing Club invited the club to join them as they spread holiday cheers to several nursing homes in Hays.

Another event Block & Bridle volunteers to help with is the Special Olympics. Hays is the site for this event each year, and this gives club members a chance to help those who are less fortunate.

# LEISURE ACTIVITIES

INITIATE DANCE

CHRISTMAS DANCE

END-OF-YEAR PICNIC & DANCE

# INITIATE DANCE

At the beginning of each school year, the new initiates of the club jump into the activities by hosting a dance. All of the members look forward to this every year since it gives the new members a chance to get to know everybody and the old members an opportunity to catch up with all of their friends after working hard all summer.



A new event for the initiates was a T-shirt decorating contest. Above are all of the contestants and to the right are the winners.





# CHRISTMAS DANCE

As one can see, our Block & Bridle members definitely get into the Christmas spirit, by putting on and attending the Christmas Dance. No Scrooges here!!



# END-OF-YEAR PICNIC & DANCE

To celebrate the end of another school year, Block & Bridle had a BBQ and dance. The event gave members a chance to say good-bye for the summer and to celebrate the friendships they made throughout the school year.





© FHSU B4B