

Fort Hays State University

FHSU Scholars Repository

Block & Bridle Club Scrapbooks

Archives Online

1996

FHSU Block & Bridle Club Scrapbook: 1995-1996

FHSU Block & Bridle Club

Follow this and additional works at: <https://scholars.fhsu.edu/blockbridle>

Recommended Citation

FHSU Block & Bridle Club, "FHSU Block & Bridle Club Scrapbook: 1995-1996" (1996). *Block & Bridle Club Scrapbooks*. 11.

<https://scholars.fhsu.edu/blockbridle/11>

This Scrapbook is brought to you for free and open access by the Archives Online at FHSU Scholars Repository. It has been accepted for inclusion in Block & Bridle Club Scrapbooks by an authorized administrator of FHSU Scholars Repository.

FHSU BLOCK & BRIDLE

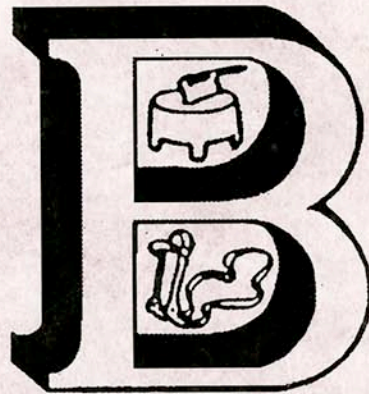
A Shuffle Through the Year



1995-1996

TABLE OF CONTENTS

Introduction	1
Officers	2
Advisors	3
Members	4
Meetings	6
Minutes	7
Treasurer Report	8
List of Activities	11
Judging Contests	12
Publicity	18
Club Activities	22
National Meeting	24
Little International	26
Community Activities	36
Leisure Activities	44



The Block and Bridle Emblem is significant to club members. It represents the principles on which this club is built. Character, sincerity, and a moral life are asked of all members when they join and are depicted in the straight perpendicular line of the "B". The distinct curves of the "B" are symbolic of the social pleasure, mental energy, and determination of members.

The meat block represents the material aspects of our life. The bridle stands for the behavior of Block and Bridle members; the control over ourselves that we try to maintain, the mannerisms and respect we show toward others, and the way we treat animals.



Welcome to Fort Hays State University located in Hays, Kansas. The University is home to about 5,000 students. Our Block and Bridle Club membership of 147 makes us the largest student organization on campus.

Many of the members pass their spare time playing cards, whether it be pitch, hearts, poker, or solitaire. Whatever the game, everything seems to be shuffled together into a complete deck. The following is a quick shuffle through the 1995-96 school year.

OFFICERS



President--Jim Halling

Vice-President--Grant Havel



Secretary--Sharla Rubottom



Treasurer--Jennifer Watkins

ADVISORS



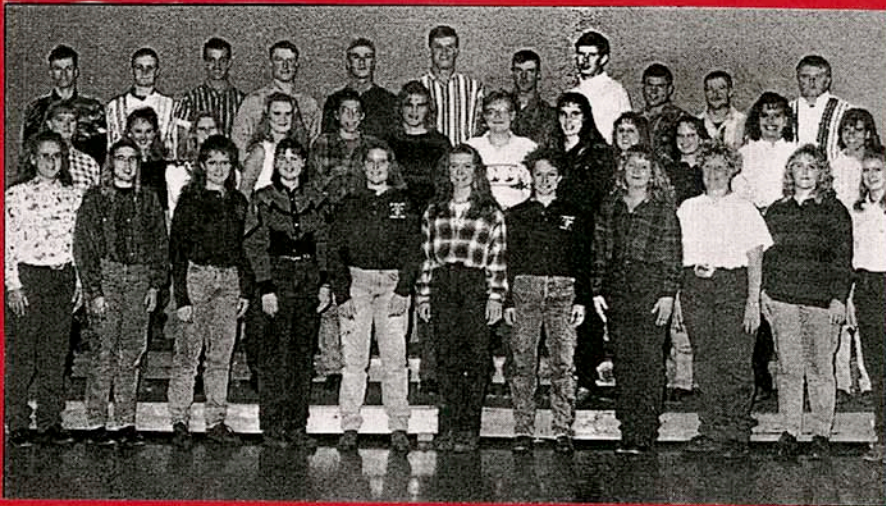
Kevin Huser, Manager of the University Farm Sheep & Swine Unit & Livestock Judging team coach, keeps a contest organized.



Dr. Sandra Johnson, Assistant Professor of Agriculture, kicks back at the State Fair as she recruits prospective FHSU students and Block and Bridle members.



1995-96 MEMBERS



ISSUES '96 20250
K&W COMBSA KITA-JI

Jerrod Anderson
Keri Arensdorf
Cheryl Bales
Dawn Barry
Jared Breinig
Jill Brewer
Becky Brooks
Billie Brown
Chad Brummer
Tish Busby
Phillip Butler
Jennifer Byram
Robyn Carey
Christy Carpenter
Carol Jean Chapman
Cheryl Clarke
Audra Clement
Rachelle Cole
Scott Davied
Stacy Dettmer
Stephanie Dickerson
Devin Dinkel
Amy DuBois
Mitzi Dusin
Jason Dvorak
Shawna Eberle
Brandon Engelke
Pete Feyerabend
Bryon Foose
Darin Freehling
Jason Gerstberger
Michelle Gilbert
Melissa Graham
Troy Green
Ryan Griffin
Tammy Gutchewsky
Jared Haggard
Jenny Halbleib
Jim Halling
Clint Hammeke
Jeff Hammons
Eric Hanson
Dave Hanzlick
Julia Hanzlick
Nycole Harris
Grant Havel
Stephanie Helms
Sara Hibbard

Kristi Hoffer
Jim Hoffman
Kim Holub
Todd Honomichl
Elizabeth Hornbuckle
Donnetta Hoss
David Huff
Quinton Huncovsky
Hannah Hunley
Karl Hurt
John Jirak
Ed Johnson
Jon Kelty
Larry Koch
Kim Konrade
Ryan Kufahl
Christine Lambert
Dustin Lantow
Paula Lilley
Nels Lindberg
Suzette Long
Tiffany Lowery
Josh Lowrie
Tanya Lucore
Robert Mapes
Greg May
Melissa McCormack
Steve McFall
Melody Meeks
Randy Mettling
Tracy Metzger
Gregg Mickey
Ryan Miller
Terry Miller
Jennifer Moore
Josh Morris
Jamie Mountain
Monica Olberding
Brad Painter
Ryan Parker
Tammy Peterson
C.J. Pfannenstiel
Jay Pfeifer
Becky Poore
Russel Pope
Tara Pruter
Todd Ragsdale
Rebecca Rahe

Jana Ramonda
Craig Rees
Joe Renner
Jake Rexroat
Cody Richards
Kim Riemann
Sarah Robben
Mark Rohr
Mitch Rohr
Darren Rubottom
Sharla Rubottom
Beth Sanden
Brian Schafer
Scott Schertz
Bryce Schneider
Kristi Schreiber
Dale Seeman
Brandon Seifried
Joye Serrien
Laurie Shaver
Kate Shepard
Julia Shoffner
Bryan Shoemaker
Karen Skrdlant
Jerrod Smith
Jayson Sneath
Mark Sorensen
Mark Splitter
Brian Stawinski
Rakel Strecker
Dustin Stull
Cody Sump
Justin Terry
Lukes Thielenhaus
Richard Thielenhaus
Shawn Tinkel
Scott Torline
Stacy VonFeldt
Jennifer Watkins
Angela Webber
Sara Wetter
Tammy Wittman
Karen Wolfe
Jason Wolff
Jeremy Woydziak
Michelle Young
Mike Zach

MEETINGS

MINUTES

TREASURER'S REPORT

PHOTOGRAPHS

Minutes

Block and Bridle

April 10, 1996

The April 10th meeting of Block and Bridle was called to order by President Halling. Secretary Rubottom read the minutes and Treasurer Watkins gave the on-campus balance of \$3401.58 and the off-campus balance of \$2998.49.

Amy Dubois spoke on Little "I" and said people would need to sign up teams. She also explained how they would be judged.

Kevin Huser discussed the dance and brought up the idea of using sand instead of wood chips for the show. He also told the club that he was resigning as club advisor.

Dr. Johnson discussed the need for a club-calf sale meeting.

Additional nominations were accepted for 1996-97 officers and elections were held. The 1996-97 officers are Brian Schafer, President; Tammy Peterson, Vice-President; Tish Busby, Secretary; Jennifer Watkins, Treasurer; Tanya Lucore and Sara Hibbard, Publicity; Becky Poore and Donnetta Hoss, Historian; Grant Havel, Little "I" Chair; Dale Seeman, Little "I" Assistant; Brandon Seifried, JUCO Chair; Bryon Foose, Dairy Chair; and Jeff Hammons and Shawna Eberle, Ag Awareness.

Tiffany Lowery moved that the meeting be adjourned and Tish Busby seconded it.

The meeting was adjourned.

Charla Rubottom
Secretary

Treasurer's Report

	94/95		95/96 (* estimates)		Proposed 96/97	
	Revenue	Expense	Revenue	Expense	Revenue	Expense
DUES	\$700	\$260	\$1,065	\$360	\$1,010	\$310
FALL SMOKER	\$448	\$579	\$0	\$232	\$0	\$250
SPRING SMOKER	\$0	\$127	\$0	\$200 *	\$0	\$200
HOLIDAY PARTY	\$454	\$422	\$520	\$475	\$500	\$475
NACTA CONFERENCE	\$500	\$0	\$0	\$0	\$0	\$0
INTRAMURALS	\$0	\$15	\$0	\$30 *	\$0	\$30
NEW MEMBERS	\$0	\$0	\$240	\$478	\$300	\$500
** MISCELLANEOUS						
Mail Service	\$0	\$200	\$0	\$250 *	\$0	\$250
Film Processing	\$0	\$224	\$0	\$250 *	\$0	\$250
Office Supplies	\$0	\$64	\$0	\$100 *	\$0	\$100
Scrapbook	\$0	\$171	\$0	\$200 *	\$0	\$200
Allocations	\$659		\$700		\$800	
FUND RAISERS						
Hats			\$68	\$0 *	\$70	\$0
Shirts			\$162	\$153	\$190	\$180
Donations			\$1,185	\$520	\$1,000	\$500
Southwest Dairy Judging			\$40	\$0	\$50	\$0
Homecoming Float			\$230	\$34		
** AG AWARENESS DAY	\$0	\$446	\$0	\$800 *	\$0	\$800
Allocations	\$446		\$500		\$800	
** JUDGING TEAM	\$0	\$3,500	\$0	\$4,500 *	\$0	\$4,500
Allocations	\$2,500		\$2,050		\$4,500	
NATIONAL MEETINGS						
** Milage	\$0	\$380	\$0	\$1,024	\$0	\$1,260
Meals	\$0	\$840	\$0	\$1,440	\$0	\$1,350
** Motel	\$0	\$1,075	\$0	\$1,091	\$0	\$2,880
** Registration	\$0	\$1,575	\$0	\$3,432	\$0	\$2,250
Allocations	\$1,455		\$2,500		\$4,200	
REGIONAL MEETINGS						
** Milage	\$0	\$0	\$0	\$0 *	\$0	\$371
Meals	\$0	\$0	\$0	\$0 *	\$0	\$900
** Motel	\$0	\$0	\$0	\$0 *	\$0	\$1,120
** Registration	\$0	\$0	\$0	\$0 *	\$0	\$450
Allocations	\$0		\$0		\$1,500	
LITTLE INTERNATIONAL						
** Judges	\$0	\$500	\$0	\$500 *	\$0	\$500
Awards	\$2,040	\$2,040	\$2,150	\$2,150 *	\$2,250	\$2,250
Banquet	\$1,779	\$1,779	\$1,980	\$1,980 *	\$2,200	\$2,200
Dance	\$0	\$0	\$500	\$450 *	\$500	\$450
** Equipment	\$0	\$2,372	\$0	\$1,000 *	\$0	\$1,000
Allocations	\$1,690		\$1,000		\$1,500	
JUCO CONTEST						
** Judges	\$0	\$900	\$0	\$900	\$0	\$900
Awards	\$0	\$350	\$0	\$608	\$0	\$625
Lunches	\$0	\$400	\$0	\$344	\$0	\$350
Entry Fee	\$700	\$0	\$1,112	\$0	\$900	\$0
Banquet	\$0	\$600	\$0	\$732	\$0	\$750
Allocations	\$900		\$900		\$900	

Journal of the
 K&W Cowboys

	94/95		95/96 (* estimates)		Proposed 96/97	
	Revenue	Expense	Revenue	Expense	Revenue	Expense
FFA LIVESTOCK JUDGING						
** Judges	\$0	\$300	\$0	\$300	* \$0	\$300
Awards	\$0	\$593	\$0	\$600	* \$0	\$600
Food	\$0	\$245	\$0	\$250	* \$0	\$250
Entry Fee	\$477	\$0	\$425	\$0	* \$425	\$0
Allocations	\$300		\$300		\$300	
FFA DAIRY JUDGING						
** Judges	\$0	\$50	\$0	\$50	\$0	\$50
Awards	\$0	\$320	\$0	\$482	\$0	\$500
Food	\$0	\$140	\$0	\$168	\$0	\$200
Entry Fee	\$470	\$0	\$684	\$0	\$500	\$0
Allocations	\$50		\$50		\$50	
SUBTOTAL (Without Allocations)	\$7,568	\$20,466	\$10,360	\$26,083	\$9,895	\$30,051
STUDENT CONTRIBUTIONS	\$4,898		\$7,723		\$5,606	
SUBTOTAL + STUDENT CONTRIB	\$12,466	\$20,466	\$18,083	\$26,083	\$15,501	\$30,051
** SGA ALLOCATIONS	\$8,000		\$8,000		\$14,550	
GRAND TOTAL	\$20,466	\$20,466	\$26,083	\$26,083	\$30,051	\$30,051
* = estimates						
** = SGA allocations used for or planned usage						
President: Jim Halling Treasurer: Jennifer Watkins Advisor: Dr. Sandy Johnson (628-4015) Advisor: Kevin Huser (628-8730)						

MEETINGS



It's a FULL HOUSE!!!

"GAME OVER"



President Jim deals out instructions to his playing volunteers.

© 1985 by 40203
K&W Combs Co. 501A-11

1995 - 1996 ACTIVITIES

Welcome Back to School Picnic
Initiate Dance
Endowment Association Telethon
FHSU Promotion Booth, Kansas State Fair
Judging Contests
 Northwest District FFA Dairy
 Junior College Livestock
 Northwest District FFA Livestock
 *Southwest District FFA Dairy
Christmas Dance
American Heart Association Walk for Heart
Special Olympics
Disabled Students Association Shoot-Out
Little International Fitting & Showing Contest
Ag Awareness Day
National Meetings--November 9-13, 1995
 25 members attended meetings in Louisville, Kentucky
Speaker
 Jim Kinder--University of Nebraska-Lincoln
 "Australian Agriculture with Emphasis on Beef
 Production: A Yanks Perspective."
*Helped with AIDS Quilt display
*Raffle at Christmas Dance
*Homecoming Parade Float
*Blackjack Booth at "Spring Well"

* indicates new activities

JUDGING CONTESTS

NORTHWEST DISTRICT FFA DAIRY

JUNIOR COLLEGE LIVESTOCK

NORTHWEST DISTRICT FFA LIVESTOCK

SOUTHWEST DISTRICT FFA DAIRY

NORTHWEST DISTRICT FFA DAIRY CONTEST



These players seem to be losing the game.



FFA dairy judges gather outside the livestock pavilion.



FFA students look on while they are told the main points the judge is looking for.



As the smell of alfalfa reaches these FFA Judge's minds, they calmly sit and ponder their decisions.



Beth and Dr. Johnson are delt a "dirty" hand.



JUNIOR COLLEGE LIVESTOCK JUDGING CONTEST



"Okay Mike, what did you put in my cookie?" Brian asks as he digs in.



Judgers be aware! There is no misdealing in the ewe business.



Eric hands out an award to a participant of the JUCO Contest.

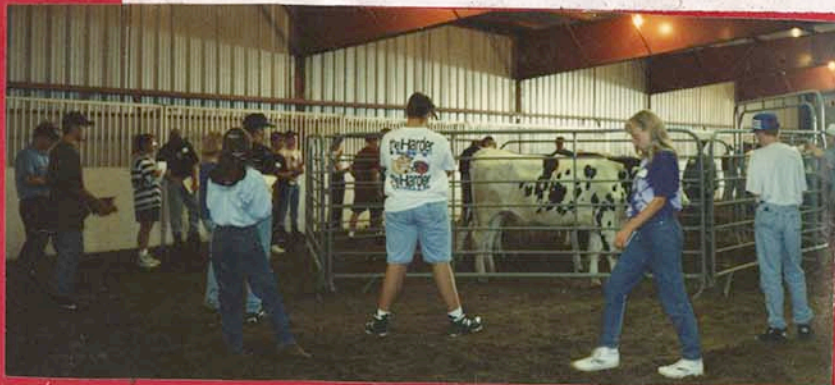


Shuffling the sandwiches through the line, these members are concentrating on their "high dealin' ham!"

And they said we were full of bull!!!



NORTHWEST DISTRICT FFA LIVESTOCK JUDGING CONTEST



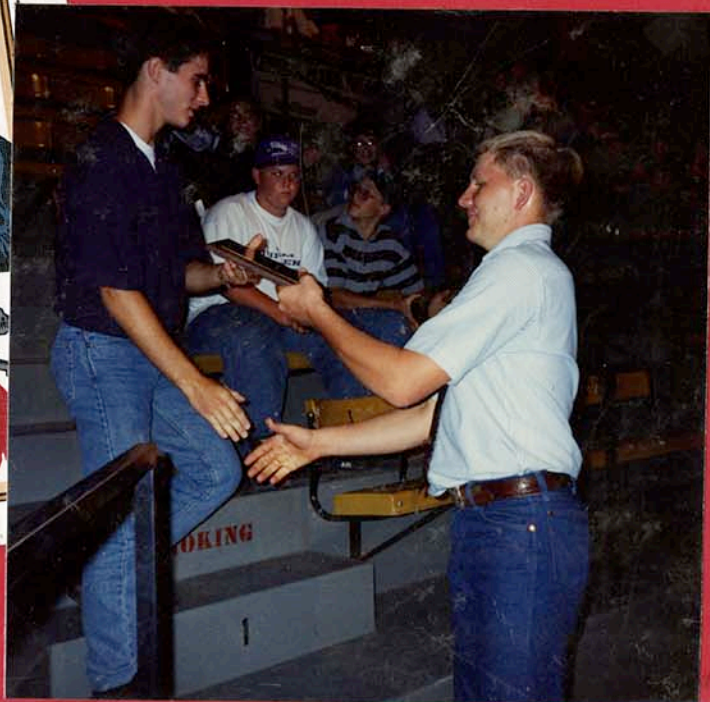
Judges shuffle their feet as they decide how to place the dairy cows.



Jennifer and President Jim deal with the dairy contest by shuffling through and sorting out the judging cards.



Members deal with Bessy and her pal in the cleaning process. The cow's response to this is . . . "GOT MILK?"



Jon Roy presents an award to an FFA member.

SOUTHWEST DISTRICT FFA DAIRY JUDGING CONTEST



Carol Jean runs cards from the Livestock Pavilion to the tabulators on campus.



The coaches wish one of them had a deck of cards.



Tabulators, Jeff, Kim, & Randy, "keep score."



While looking at the plaque with envy, Tish hands out awards to the winners.



Thank
You

Brock + Bridal Club,

Thanks alot for helping to get ~~things~~^{things}
set-up for the southwest dairy
judging contest. Your help +
support is greatly appreciated.

Thanks again,
Hanston FFA Chapter

+
Mr Seiler

Publicity

Back-to-School Picnic

State Fair

Oktoberfest Parade

Back-To-School Picnic



Each year the Block & Bridle Club helps serve the Back-to-School Picnic, which is open to the entire student body. This gives students, both new and old, the chance to know the club is available for them to join.

State Fair



Both Terry and Jered forgot their cards, so they resort to playing with these cardboard visors.

OKTOBERFEST PARADE

During the Homecoming Parade this year, the B & B members went "Hog Wild" as they received the President's Award for their float which had tiger-striped pigs with the members.



Club Activities

Welcome Back BBQ

National Meeting

Little International

Other

WELCOME BACK BBQ



The "cut" is made and the meat is dealt out to all that are playing

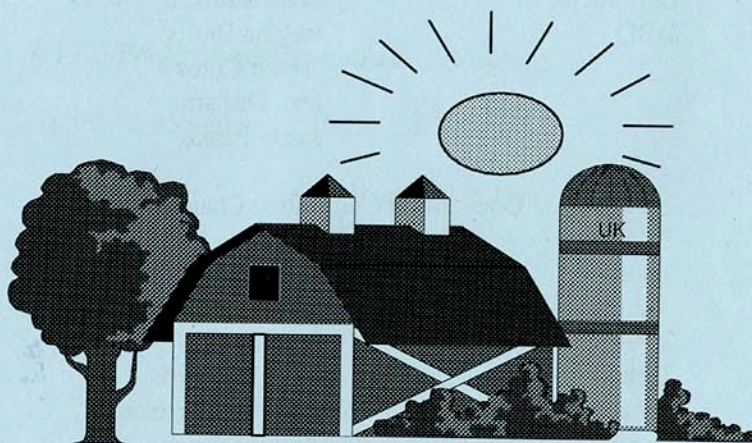


A welcome back BBQ is held for old Block and Bridle members and the new potential initiates. At the meeting everyone is introduced so that new members have a chance to get to know each other. After the meeting is held everyone heads "straight" for a delicious meal.

NATIONAL MEETING



1995 Block & Bridle
National Convention
Prayer Breakfast



Sunday, November 12

8:00 a. m.

Exposition Center

1995-96 University of Kentucky
Block and Bridle Officers

President	Jason Sandefur
Vice President	Julie Hicks
Secretary	Melissa Cavin
Treasurer	Alexis Holeman
Public Relations	Tina Coil
Marshall	Josh Piel
Pledge Trainers	Melinda Gray
Scrapbook	Leah Millikan
BBQ	Regina Burns
	Jarrod Coles
	Dan DeZarn
	Jason Peake

National Convention Committee Chairs

Tours	Katie Ashley
	Alexis Holeman
	John Zavaro
Tickets	Amy Lyn Parker
Packets	Cynthia Morrison
Dances	Kristy Farmer
Programs	Stephanie Parker
Prayer Breakfast	Dr. Debra Aaron
Sweatshirts	Julie Mossbarger

Tour Guides

Katie Ashley	Kara McDermott
Marla Barnett	Leah Millikan
Jeffrey Bewley	Cynthia Morrison
Jarrod Coles	Julie Mossbarger
Eric Dawalt	Stephanie Parker
Kristy Farmer	Justin Sexten
Alexis Holeman	Gene Ray Stewart
Kara Keetch	John Zavaro



1995 Prayer Breakfast and Annual Meeting

8:00 - 8:45 a.m.	Buffet Breakfast
8:45 a.m.	Welcome - Dr. Debra Aaron, Advisor, UK Block & Bridle
	Invocation - Eric Dawalt, Member, UK Block & Bridle
9:00 a.m.	Featured Speaker - Bob Park, Dean of Student Affairs, Henderson Community College, UK
9:30 a.m.	National Business Meeting



Little International

On April 20, 1996, the Block and Bridle Club put on the 23rd Annual Little International Fitting and Showing Contest. The event is open to all students enrolled in the university full time. This year the chair for the event was Amy DuBois who was assisted by Brian Schafer. A lot of hard work was put into the preparation for show by all members, participants, officers, and sponsors.

T W E N T Y T H I R D A N N U A L

1996

Little International Fitting and Showing Contest



F O R T H A Y S S T A T E U N I V E R S I T Y
B L O C K & B R I D L E C L U B

LITTLE INTERNATIONAL BANQUET

APRIL 20, 1996

6:00 p.m.

WELCOME.....Jim Halling

INVOCATION.....Rakel Strecker

DINNER.....Prime Rib Buffet

MASTER OF CEREMONIES.....Jim Sechrist

RECOGNITION OF SPECIAL GUESTS.....Jim Sechrist

RECOGNITION OF 1995-96 OFFICERS.....Jim Halling

INTRODUCTION OF 1996-97 OFFICERS.....Jim Halling

LIVESTOCK JUDGING TEAM.....Kevin Huser

SLIDE PRESENTATION.....Rakel Strecker
Jamie Mountain

PRESENTATION OF AWARDS

Outstanding Initiate.....Dr. Sandy Johnson

Outstanding Soph/Jr.....Kevin Huser

Workhorse Award.....Dr. Sandy Johnson

Little "I" Awards.....Amy DuBois

Everyone is welcome to attend the dance immediately following the banquet at the VFW Hall in Victoria, KS

AWARD WINNERS

Swine

Grand Champion _____

Reserve Champion _____

Champion Novice _____

Dairy

Grand Champion _____

Reserve Champion _____

Champion Novice _____

Horse

Grand Champion _____

Reserve Champion _____

Champion Novice _____

Beef

Grand Champion _____

Reserve Champion _____

Champion Novice _____

Outstanding Herdsman Award _____

Sheep

Grand Champion _____

Reserve Champion _____

Champion Novice _____

Grand Champion Overall _____

Reserve Champion _____

Grand Champion Team _____

Reserve Champion Team _____

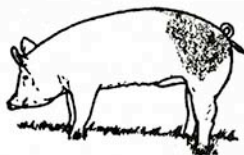
1996 Little I Showmen

Swine

202 Tish Busby
204 Brooke Davis
213 NyCole Harris
217 David Huff
219 Ed Johnson
221 Jon Roy Kelty
222 Tiffany Lowery
223 Josh Lowrie
226 Brad Painter
229 Becky Poore
231 Rebecca Rahe
236 Dale Seeman
237 Brandon Seifried
241 Jennifer Watkins
247 Mike Zach

Dairy

201 Chad Brummer
203 Carol Jean Chapman
205 Patricia Duffy
208 Tammy Eisen
211 Melissa Graham
213 NyCole Harris
222 Tiffany Lowery
232 Jana Ramonda
233 Mitch Rohr
235 Michelle Schroeder
238 Brian Stawinski
240 Shawn Tinkel
245 Karen Wolfe



Sheep

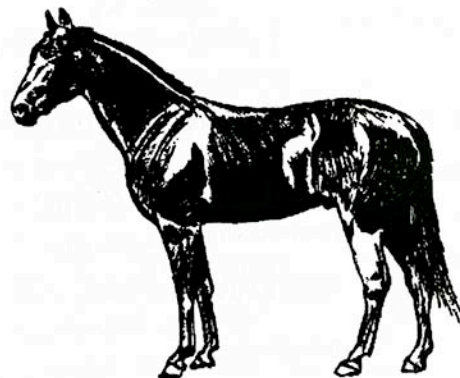
202	Tish Busby	232	Jana Ramonda
213	NyCole Harris	235	Michelle Schroeder
214	Grant Havel	239	Dustin Stull
215	Sara Hibbard	242	Tammy Whittman
219	Ed Johnson	243	Dawn Wilbeck
224	Tanya Lucore		

Horse

207 Shawna Eberle
210 Brian Gerstberger
211 Melissa Graham
213 NyCole Harris
218 Hannah Hunley
226 Brad Painter
227 Tammy Peterson
232 Jana Ramonda

Beef

200 Jared Breinig
204 Brooke Davis
209 Bryon Foose
212 Jared Haggard
215 Sara Hibbard
216 Jim Hoffman
217 David Huff
220 Doug Kaser
225 Terry Miller
228 Scott Phye
230 Russell Pope
231 Rebecca Rahe
233 Mitch Rohr
234 Brian Schafer
237 Brandon Seifried
241 Jennifer Watkins
244 Kevin Wilbeck
246 James Wolters
247 Mike Zach



1996 LITTLE INTERNATIONAL

Little "I"

Chair Amy DuBois
Assistant Brian Schafer

Beef

Judge Rodney Werth
Chair Jon Kelty
Assistant Randy Mettling

Dairy

Judge Randy Huser
Chair Bryon Foose
Assistant Lukes Thielenhaus

Horse

Judge Norleen Knoll
Chair Kim Riemann
Assistant Stephanie Dickerson

Sheep

Judge Jerry Riemann
Chair Josh Lowrie
Assistant Jared Breinig

Swine

Judge Gary Shapland
Chair Grant Havel
Assistant Dale Seeman

Banquet

Chair Jamie Mountain
Assistants Tanya Lucore
Tammy Peterson

Lunch

Chair Jennifer Byram

1996 LITTLE "I" AWARD DONORS

Gold (over \$150)

Bar-B-Tack
Ellis County Dairy Supply
Ochs, Inc.
Vanderbilts

Silver (\$100-\$149)

Al Graf
Robin Graver
Leon Huser
Jack Schmitt

Bronze (under \$100)

A&B Lewis Farms
Ellis County Feeders
Emprise Bank
Keith & Christina Hoyt
Andy Riegel
RX Cattle Company
Gary Shapland
United Ag Services, Inc.
Scott Wiltfong

NATIONAL BLOCK & BRIDLE CLUB

OUR BEGINNING

December 2, 1919, student representatives from four animal husbandry clubs met in Chicago and formed the National Block & Bridle Club. The local clubs became chapters in the new national organization. These charter chapters were Iowa, Kansas, Missouri and Nebraska. The roster of Block & Bridle clubs has since grown throughout the United States to ninety-three members. The objectives of the organization are:

1. To promote higher scholastic standing among animal science students.
2. To promote animal science, especially all phases of animal science work in colleges & universities.
3. To bring about a closer relationship among students pursuing some phase of animal science as a profession.

THE EMBLEM

The perpendicular of the **B** represents straight moral characteristics, sincerity and honor. The two curves required to complete the letter **B** represent the fundamentals upon which we base our social pleasure, mental energy and moral force. The meat block represents the material aspects of our life. The bridle stands for the behavior of B&B members, the control over ourselves that we try to maintain, the mannerisms and respect we show toward others, and the way which we treat animals.

BLOCK & BRIDLE CLUB OFFICERS

1995-1996

President	Jim Halling
Vice President	Grant Havel
Secretary	Sharla Rubottom
Treasurer	Jennifer Watkins
Historian	Rakel Strecker
	Jamie Mountain
Publicity	Laurie Shaver
	Melissa Graham
JUCO Chair	Billie Brown
Little "I" Chair	Amy DuBois
Assistant	Brian Schafer
Dairy Chair	Bryon Foose
Ag. Awareness Chair	Jennifer Byram

1996-1997

President	Brian Schafer
Vice President	Tammy Peterson
Secretary	Tish Busby
Treasurer	Jennifer Watkins
Historian	Becky Poore
	Donnetta Hoss
Publicity	Tanya Lucore
	Sara Hibbard
JUCO Chair	Brandon Seifried
Little "I" Chair	Grant Havel
Assistant	Dale Seeman
Dairy Chair	Bryon Foose
Ag. Awareness Chair	Shawna Eberle
	Jeff Hammons

1995-1996 BLOCK & BRIDLE CLUB FACTS

Number of initiates	<u>72</u>
Total club membership	<u>143</u>
% of non-Agriculture majors	<u>45%</u>

1995-1996 ACTIVITIES

Welcome Back to School Picnic
Initiate Dance
Endowment Association Telethon
FHSU Promotion Booth, Kansas State Fair
Judging Contests
 Northwest District FFA Dairy
 Junior College Livestock
 Northwest District FFA Livestock
Christmas Dance
American Heart Association Walk for Heart
Special Olympics
Disabled Students Association Shoot - Out
Little International Fitting & Showing Contest

National Meetings-November 9-13, 1995
 25 members attended meetings in Louisville,
 Kentucky

Speaker

Jim Kinder-University of Nebraska-Lincoln
"Australian Agriculture with
Emphasis on Beef Production:
A Yanks Perspective"

COMING ACTIVITIES

May 2 & 3 - Ag Awareness Day
May 3 - End of year picnic

NEW ACTIVITIES

- Helped with AIDS Quilt display
- Hosted Southwest District FFA Dairy Judging Contest
- Raffle at Christmas Dance
- Homecoming Parade Float
- Blackjack Booth at "Spring Well"

CLUB AWARDS AND RECOGNITION

- 4th place Scrapbook
 National B&B meetings, Louisville, KY
- 5th place Chapter Activities
 National B&B meetings, Louisville, KY
- President's Award
 FHSU Homecoming parade



FHSU Block & Bridle

1995-1996 Members

Jerrold Anderson
Keri Arensdorf
Cheryl Bales
Dawn Barry
Jared Breinig
Jill Brewer
Becky Brooks
Billie Brown
Chad Brummer
Tish Busby
Phillip Butler
Jennifer Byram
Robyn Carey
Christy Carpenter
Carol Jean Chapman
Cheryl Clarke
Audra Clement
Rachelle Cole
Scott Davied
Stacy Dettmer
Stephanie Dickerson
Devin Dinkel
Amy DuBois
Mitzi Dusin
Jason Dvorak
Shawna Eberte
Brandon Engelke
Pete Feyerabend
Bryon Foose
Darin Freehling
Jason Gerstberger
Michelle Gilbert
Melissa Graham
Troy Green
Ryan Griffin
Tammy Gutchewsky

Jared Haggard
Jenny Halbleib
Jim Halling
Clint Hammeke
Jeff Hammons
Eric Hanson
Dave Hanzlick
Julia Hanzlick
Nycole Harris
Grant Havel
Stephanie Helms
Sara Hibbard
Kristi Hoffer
Jim Hoffman
Kim Holub
Todd Honomichl
Elizabeth Hornbuckle
Donnetta Hoss
David Huff
Quinton Huncovsky
Hannah Hunley
Karl Hurt
John Jirak
Ed Johnson
Jon Kely
Larry Koch
Kim Konrade
Ryan Kufahl
Christine Lambert
Dustin Lantow
Paula Lilley
Nels Lindberg
Suzette Long
Tiffany Lowery
Josh Lowrie
Tanya Lucore

Robert Mapes
Greg May
Melissa McCormack
Steve McFall
Melody Meeks
Randy Mettling
Tracy Metzger
Gregg Mickey
Ryan Miller
Terry Miller
Jennifer Moore
Josh Morris
Jamie Mountain
Monica Olberding
Brad Painter
Ryan Parker
Tammy Peterson
C.J. Pfannenstiel
Jay Pfeifer
Becky Poore
Russell Pope
Tara Pruter
Todd Ragsdale
Rebecca Rahe
Jana Ramonda
Craig Rees
Joe Renner
Jake Rexroat
Cody Richards
Kim Riemann
Sarah Robben
Mark Rohr
Mitch Rohr
Darren Rubottom
Sharia Rubottom
Beth Sanden

Brian Schafer
Scott Schertz
Bryce Schneider
Kristi Schreiber
Dale Seeman
Brandon Seifried
Joye Serrien
Laurie Shaver
Kate Shepard
Julia Shoffner
Bryan Shoemaker
Karen Skrdlant
Jerrold Smith
Jayson Sneath
Mark Sorensen
Mark Splitter
Brian Stawinski
Rakel Strecker
Dustin Stull
Cody Sump
Justin Terry
Lukes Thielenhaus
Richard Thielenhaus
Shawn Tinkel
Scott Torline
Stacy VonFeldt
Jennifer Watkins
Angela Webber
Sara Wetter
Tammy Wittman
Karen Wolfe
Jason Wolff
Jeremy Woydziak
Michelle Young
Mike Zach

**Congratulations to our graduating seniors!
Thanks for many hours of dedicated work.**

Jennifer Byram - Coldwater, KS
Robyn Carey - Burlington, KS
Carol Jean Chapman - Hardtner, KS
Stephanie Dickerson - Paradise, KS
Amy DuBois - Quinter, KS
Jim Halling - Hanston, KS
Stephanie Helms - Linn, KS
Kristi Hoffer - Beloit, KS
Jon Roy Kelty - Larned, KS
Dustin Lantow - Emporia, KS
Tiffany Lowery - Cheney, KS
Tracy Metzger - Alma, NE
Josh Morris - Idalia, CO
Rebecca Rahe - Belleville, KS
Kim Riemann - Dighton, KS
Scott Schertz - Monument, KS
Julia Shoffner - Caldwell, KS
Jerrod Smith - Larned, KS
Rakel Strecker - Spearville, KS
Dustin Stull - Natoma, KS
Karen Wolfe - Colorado Springs, CO

HISTORY OF THE LITTLE I

Chairs

Round Robin Winner

1971 -	
1972 - Robert Siefkes	
1973 - Vernon Wenger	
1974 - Bill Jones	
1975 - Duane Kelly	
1976 - Joe Cornwell	
1977 -	
1978 -	
1979 -	
1980 -	
1981 -	
1982 -	
1983 -	
1984 - Neal Beetch	Les Shoemaker
1985 - Greg Beetch	
1986 - Jack Schmitt	
1987 - Mark Hammeke	
1988 - Jay Brack	
1989 - James Sechrist	
1990 - Tim Zenger	Ed DeBauche
1991 - Rob Rahe	Jayne Dick
1992 - Brendon Osborn	
1993 - Anita Sakala	Randy Huser
1994 - Eric Dexter	Stacy Barth
1995 - Aaron Lewis	Jason Wolff
1996 - Amy DuBois	

We are trying to compile some club history. If you can make corrections or additions to the above information please let us know.

1995 Livestock Judging Team

Members : Billie Brown Josh Morris
Tish Busby Brian Schafer
Jared Haggard Brandon Seifried

Coach - Kevin Huser

Mid America Classic - Wichita, KS
7th Team Beef 10th Team Overall

American Royal - Kansas City, KS
High Indv Beef - Brandon Seifried
12th Overall - Brandon Seifried
19th Reasons - Brandon Seifried

North American International Livestock Exposition - Louisville
14th Team

Louisiana State Fair - Shreveport, LA
1st Team Sheep 2nd Indv - Brandon Seifried
2nd Team Beef 3rd Indv - Josh Morris
3rd Team Swine 5th Indv - Tish Busby
3rd Team Overall

Cow Palace, San Francisco, CA
3rd Team Swine 4th Team Reasons
4th Team Beef 9th Indv Sheep - Brandon Seifried
4th Team Overall 11th Indv - Tish Busby

1996 NACTA

Team members - Kristi Hoffer Dustin Stull
Eddie Johnson Mike Zach

High Indv Sheep - Mike Zach
6th Indv Reasons - Mike Zach
6th Indv Swine - Kristi Hoffer
12th Indv Overall - Dustin Stull

Agriculture Department

Faculty

Dr. Garry Brower, Interim Chair
Dr. Jean Gleichsner
Dr. Sandy Johnson
Dr. Neil Patrick
Dr. Brent Spaulding
Dr. Robert Stephenson
Dr. Bernie Tonroy

Staff

Beef and Horse Unit	Gary Rolland
Crop Unit	Steve Engelhardt Harland Werth
Dairy Unit	Stephanie Eckroat Mike Hammerschmidt
Sheep and Swine Unit	Kevin Huser
Secretary	Janet Knipp

Student Government Association Senators

Carol Jean Chapman	Jared Haggard
Melissa Graham	Jennifer Watkins

NAMA

The National Agri-Marketing Association (NAMA) is an organization of Fort Hays State University students and established business professionals involved in agriculture marketing, sales, journalism, and other related areas. The FHSU NAMA chapter was formed in the fall of 1993 by interested students and professors.

Throughout this past year, members have worked on several fund raisers including sales of advertisements for the FHSU Rodeo Club's rodeo program, participation in Ellis County Landfill "Litter Lotto" and selling T-shirts during Octoberfest. The members hope to use these funds in the coming year for National meetings. NAMA was awarded 2nd place in the Homecoming banner contest for representing the "Tiger Madness" theme. Several members recently attended the professional meeting of the Great Plains NAMA Chapter in Wichita. Students met and interacted with prospective employers. Members also watched students from two universities practice their marketing presentations in preparation for National competition.

NAMA has proven to be very beneficial to students who are looking for employment; the organization has given them opportunities to speak with professionals one-on-one, thus enabling them to network with potential employers in the agriculture field.

President - Matt Baalman - Wichita, KS
Vice President - Rakel Strecker - Spearville, KS
Secretary - Terra Gottschalk, Logan, KS (Fall)
Tammy Gutchewsky, Oberlin, KS (Spring)
Treasurer - Warren Davidson, Hays, KS
Advisors - Dr. Brent Spaulding
Dr. Neil Patrick

Delta Tau Alpha

The honor society of Delta Tau Alpha recently returned from attending the 37th National Convention in Springfield, MO. The organization participated in the Ag Quiz Bowl (tying for third), Corbus Book Competition - a yearbook of the chapter's activities (placing second), business meetings and social activities (Wade Wagner was on the winning Ag Olympics Team). Darren Rubottom completed his term as National Vice President for the Midwest Region. Dr. Stephenson was re-elected as National Treasurer (this will start his fifth year in that position).

Over the past year, DTA has been very active both on- and off- campus. The chapter participated in the American Heart Walk to raise research money, the NAMES Project AIDS Memorial Quilt display on campus, called alumni for the Endowment Telethon, helped to move books in the library and kept 2- miles of adopted highway near Hays clean. This spring the 3rd Annual Ag Quiz Bowl was held with ten teams testing their knowledge in the areas of plant science, soil science, animal science and agribusiness. The team of Lance Feikert, John Minet, and Wade Wagner was victorious. The chapter hopes to continue to serve the department, university and community over the next year.

President - Darren Rubottom, Ransom, KS
Vice President - Sharla Rubottom, Liebenenthal, KS
Secretary - Terra Gottschalk, Logan, KS (Fall)
Phil Henrickson, Logan, KS (Spring)
Treasurer - Stephanie Helms, Linn, KS
Advisor - Dr. Jean Gleichsner
National Treasurer - Dr. Robert Stephenson

Dairy



*Grand Champion Dairy Showman - **Michelle Schroeder***

*Champion Novice Dairy Showman - **Michelle Schroeder***



*Reserve Champion Dairy Showman - **Melissa Graham***



*Outstanding Dairy Herdsman - **Tiffany Lowery***

Swine



*Grand Champion Swine Showman - **Brandon Seifried***



*Reserve Champion Swine Showman - **Tiffany Lowery***



*Champion Novice Swine Showman - **Josh Lowrie***

10/20/08 CV 2008
K&W Cousins 10/1/08

Sheep



*Grand Champion Sheep Showman - **Dustin Stull***



*Reserve Champion Sheep Showman - **Grant Havel***

*Champion Novice Sheep Showman - **Grant Havel***

Champions

Grand Champion Showman Overall - **Brandon Seifried**
Reserve Grand Champion Overall - **Brian Schafer**



Grand Champion Team - **Josh Lowrie**
Brad Painter
Jared Brenig



Reserve Champion Team - **Jana Ramonda**
Jennifer Watkins
Carol Chapman

Printed by 20203
K&W Coubrua MFLA

Awards



Workhorse Award- **Jon Kelty**
Tiffany Lowery



Outstanding Senior- **Jim Halling**



Outstanding Initiate- **Tammy Peterson**

Outstanding Soph/Jr- **Brian Schafer**
Grant Havel



What concentration!!



Now this hoof needs to be even with...

It's all mine!!



Brian (right) and Jared (above) "eye" the judge as they would "eye" a bad hand of cards.

10/15/2003 - CV 20203
K&W Combsau

DANCE

A Block & Bridle event would not be complete without a DANCE!! After everyone enjoyed a delicious dinner the Little International Awards Banquet, they trekked a ten mile drive to Victoria, Kansas to finish off the evening "playing" around and dancing.



Community Activities

American Heart Association Walk For Heart

Endowment Association Telethon

AIDS Quilt Display

Agriculture Awareness Day

Other

10/19/00 CV 06203
K&W Coubsua 2014-10

AMERICAN HEART ASSOCIATION WALK FOR HEART



ENDOWMENT ASSOCIATION TELETHON

Each year the Endowment Society works at raising money for scholarships for students who attend FHSU, by sponsoring a telethon.

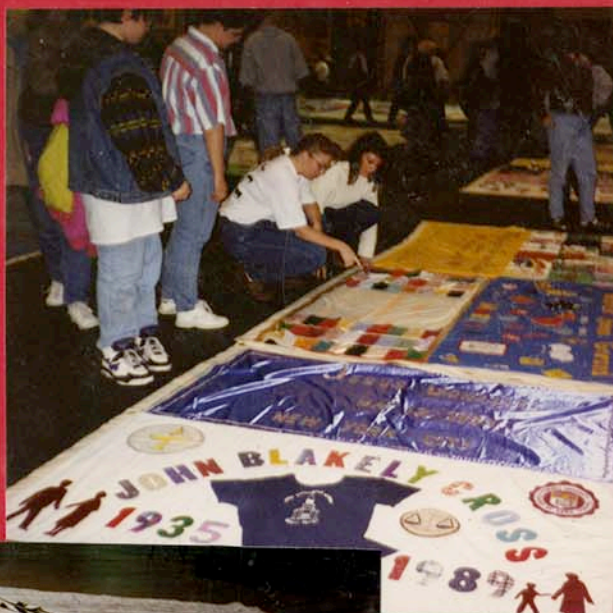


Dustin, shouldn't you be working?



Let's see. . . What's that number again?

AIDS AWARENESS QUILT



When the Kansas Heartland Display of the Names Project, AIDS Quilt came to Hays, the Block & Bridle club helped with the set-up. The above shows members and others assisting with this and observing the quilt.

AGRICULTURE AWARENESS DAY



Ag Awareness Day is a time for elementary school children to become aware of the agriculture scene. As shown, many students enjoy petting the animals and asking questions about the animals. This day is a prosperous day for many of the kids as they have fun and learn at the same time.



horse cow pigs sheep



Dear Block and Bridle

Club, Thank you

for letting us see the

horses. What is

your favorite


animal?



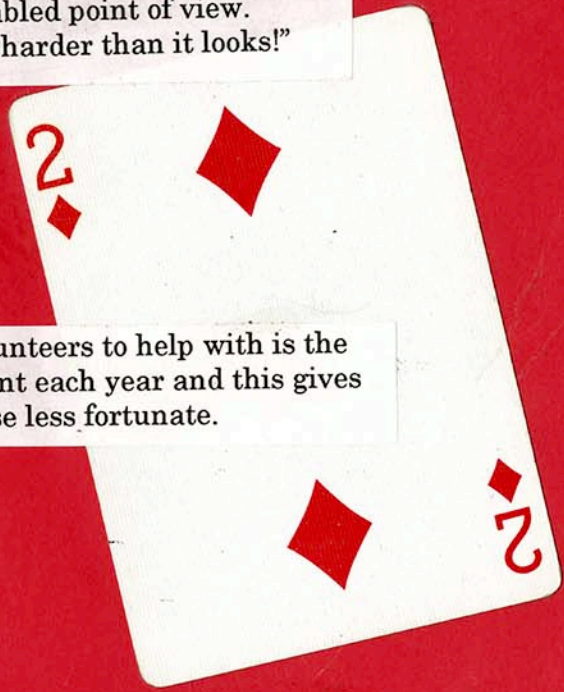
Illustrated by 20203
KRM/Combeu 011-11

Dear Blatt and Bridle
club, I liked the lambs.
They were cute. The milk
was good and the game
too. Lauren Pettit

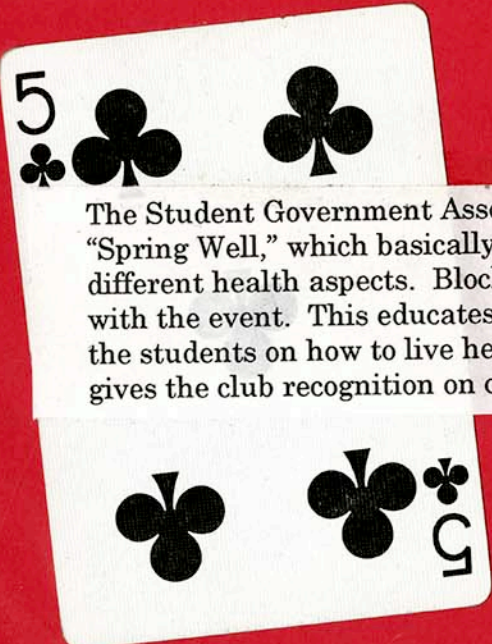
OTHER



Several members of the club participated in the Disabled Students Association's Shoot - Out. In this event, participants have to play basketball in wheelchairs. This gives the players an opportunity to see the things from the disabled point of view. As one member said "it's a lot harder than it looks!"



Another event that Block & Bridle volunteers to help with is the Special Olympics. Hays hosts this event each year and this gives volunteers another chance to help those less fortunate.



The Student Government Association put on the First Annual "Spring Well," which basically informs the student body on different health aspects. Block & Bridle volunteered to help out with the event. This educates both the members and the rest of the students on how to live healthier lifestyles and once again gives the club recognition on campus.

Leisure Activities

Initiate Dance

Ag Olympics

Christmas Dance

January '01 20:20
KEN Combeau 2011-01

INITIATE DANCE



At the beginning of each school year, the new initiates of the club jump into the activities by putting on a dance. All of the members look forward to this each year as it gives the new members a chance to get to know everybody and the old members an opportunity to catch up with all of their friends after working hard all summer long.

AG OLYMPICS



Cross Country Skiing in Kansas Dirt?



Little, but mighty.



There is No Fear in roping this prize steer!



This team is following "suit!!"

CHRISTMAS DANCE

As one can see our Block & Bridle members definitely get into the Christmas spirit, by putting on and attending the Christmas Dance each year. No Scrooges here!!





J
O
K
E
R

J

O

K

E

R

S

N

D

L

I

W

J
O
K
E
R

J
O
K
E
R



