

Fort Hays State University

## FHSU Scholars Repository

---

Reveille Yearbooks

Student Experience Collections

---

1924

### Reveille - 1924

Fort Hays State University

Follow this and additional works at: <https://scholars.fhsu.edu/yearbooks>

#### Content Disclaimer

The primary source materials contained in the Fort Hays State University Special Collections and Archives have been placed there for research purposes, preservation of the historical record, and as reflections of a past belonging to all members of society. Because this material reflects the expressions of an ongoing culture, some items in the collections may be sensitive in nature and may not represent the attitudes, beliefs, or ideas of their creators, persons named in the collections, or the position of Fort Hays State University.

---

#### Recommended Citation

Fort Hays State University, "Reveille - 1924" (1924). *Reveille Yearbooks*. 10.  
<https://scholars.fhsu.edu/yearbooks/10>

This Book is brought to you for free and open access by the Student Experience Collections at FHSU Scholars Repository. It has been accepted for inclusion in Reveille Yearbooks by an authorized administrator of FHSU Scholars Repository. For more information, please contact [ScholarsRepository@fhsu.edu](mailto:ScholarsRepository@fhsu.edu).





THE

REVEILLE

1924



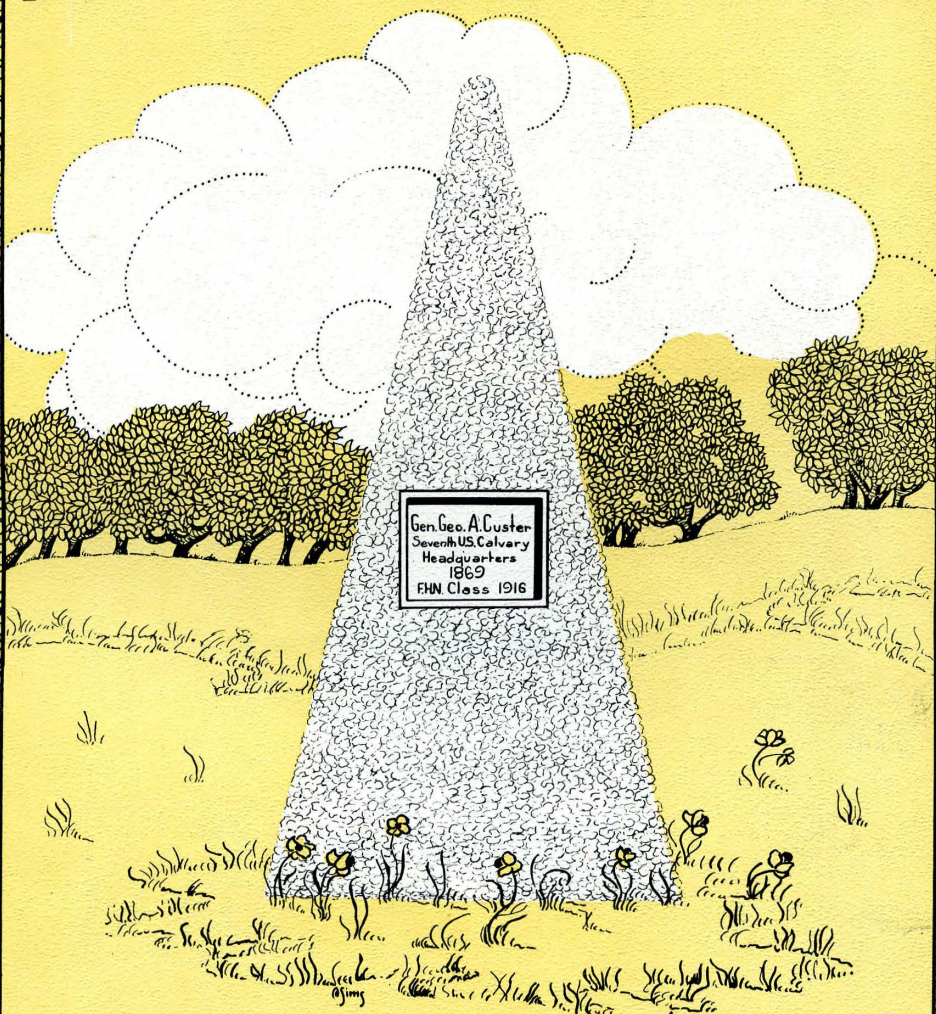


# THE REVELLE

1924

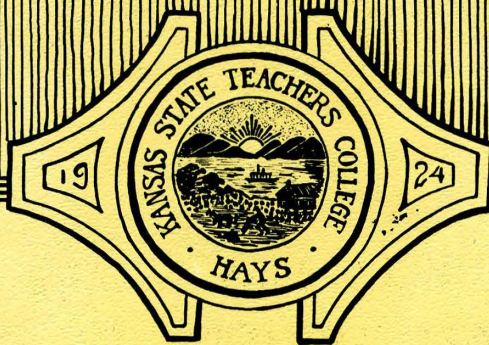
VOL. XI

1924



KANSAS STATE TEACHERS COLLEGE  
PUBLISHED BY SENIOR CLASS





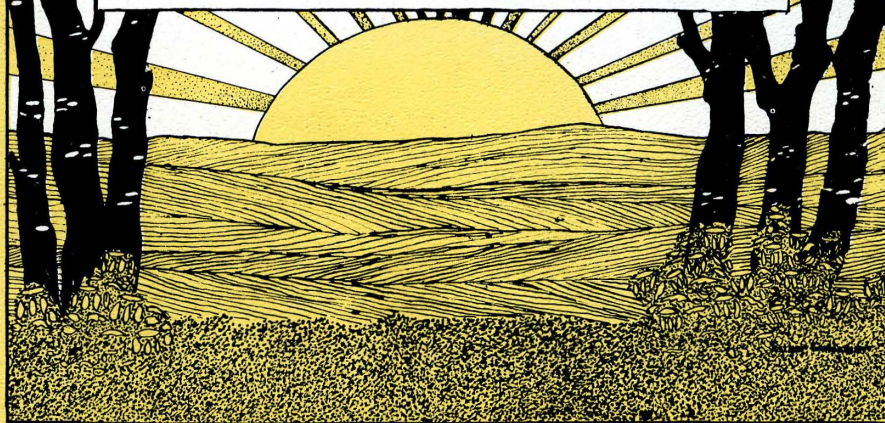
## Dedication

To President Lewis, to members of the faculty, and to the students - whose efforts crystallized our dream of Lewis Field - the Reveille of 1924 is dedicated -



# FOREWORD

To keep alive within us forever, memories of good times, valuable friendships and profitable hours spent on the campus during our four short years at K.S.T.C. has been our aim in preparing The Reveille of 1924



12/17/27  
Mrs. H. E. Melley  
gift



COPYRIGHT

1924

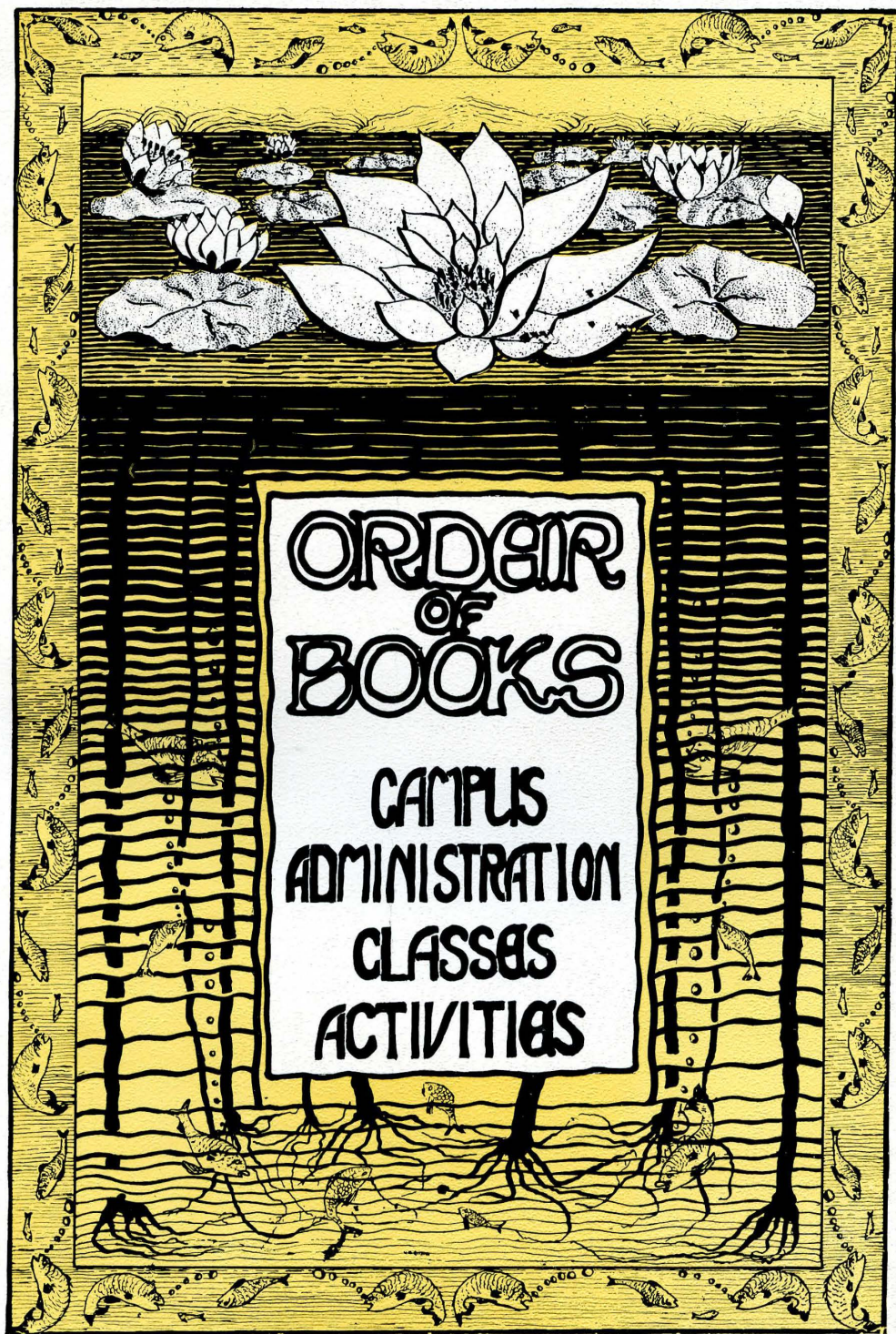
LETHA BEST  
*Editor*

LAWRENCE GROSS  
*Business Manager*

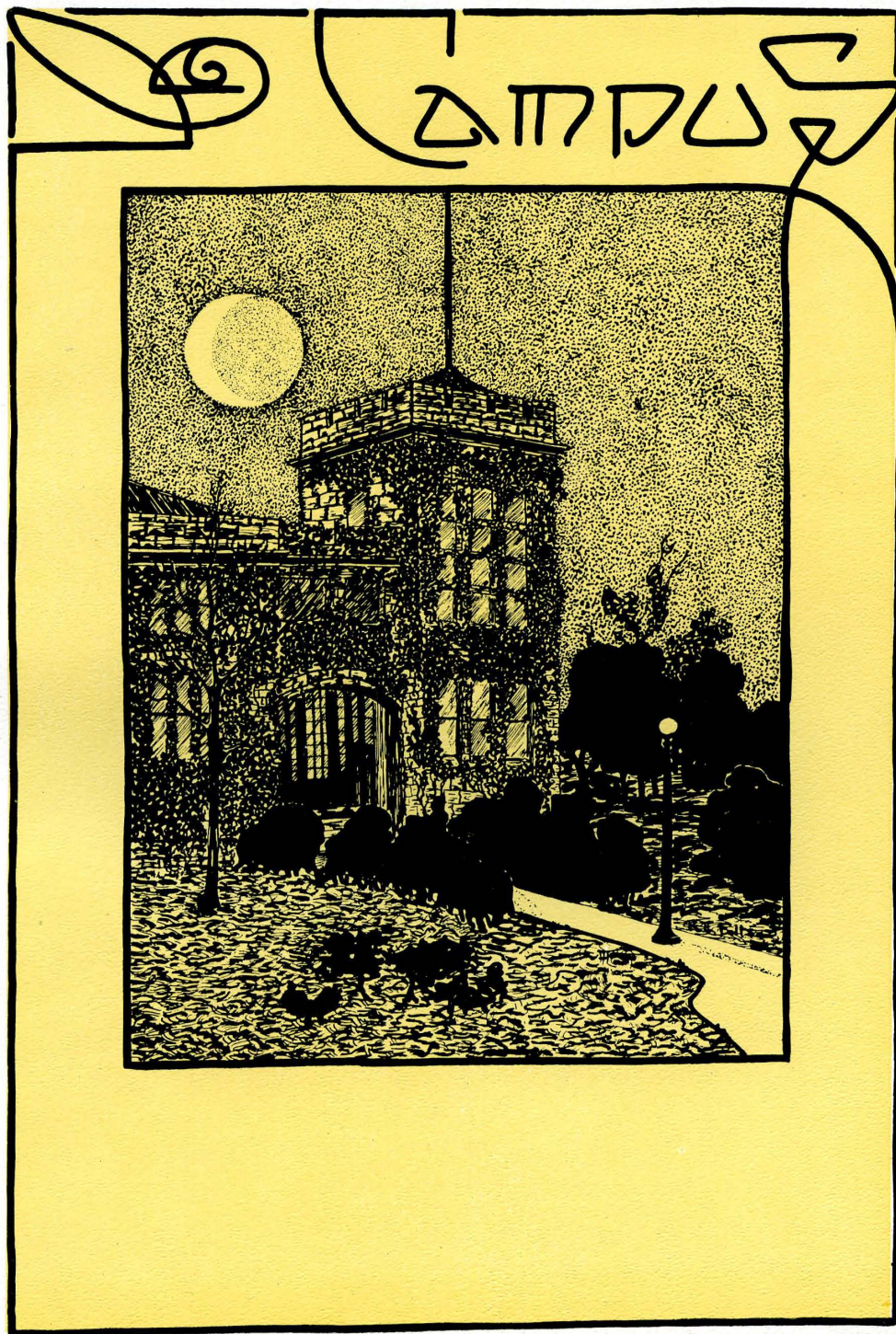
*Engraved by*  
BURGER ENGRAVING CO.  
*Kansas City, Mo.*

*Printed and Bound by*  
HUGH STEPHENS PRESS  
*Jefferson City, Mo.*







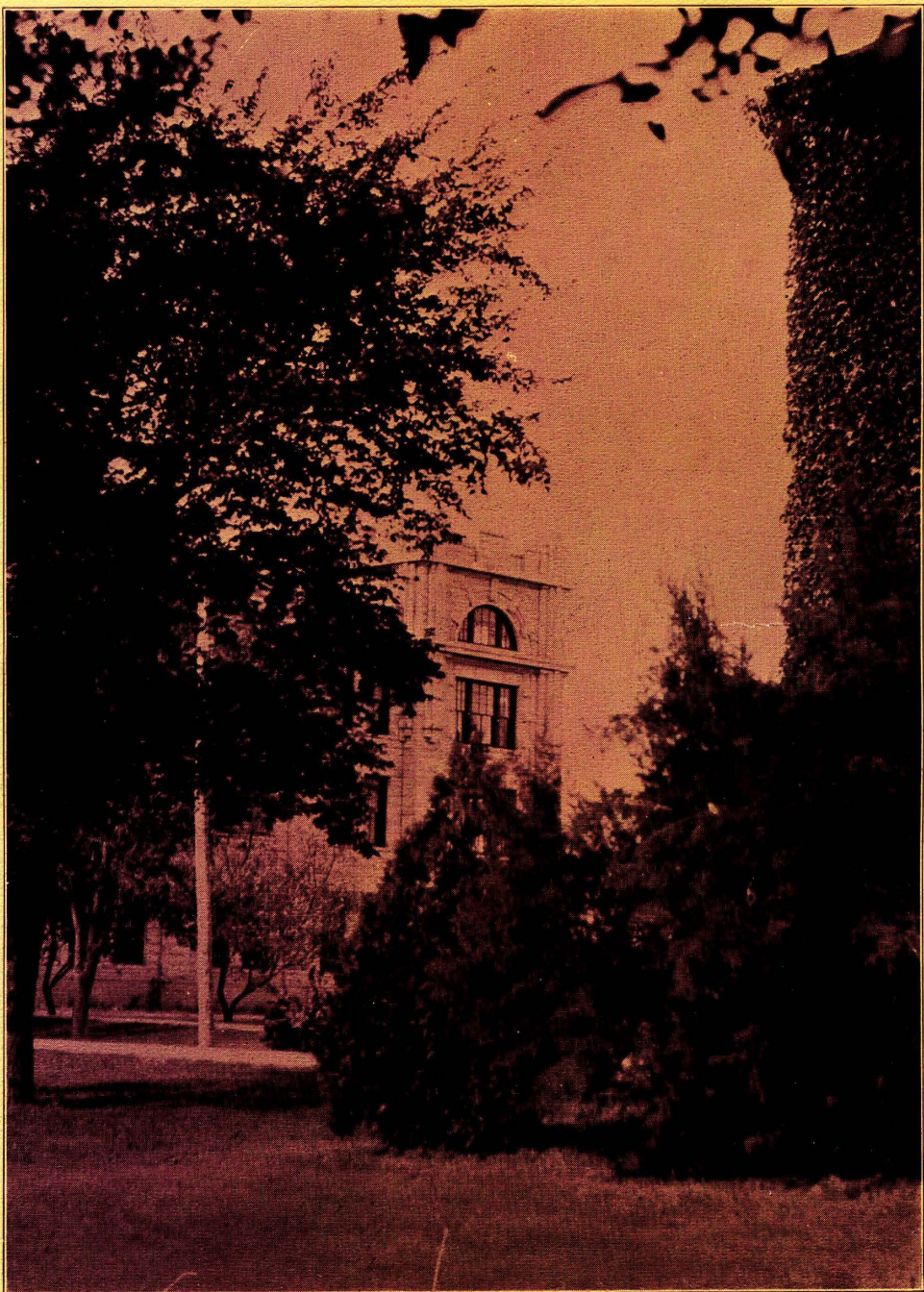






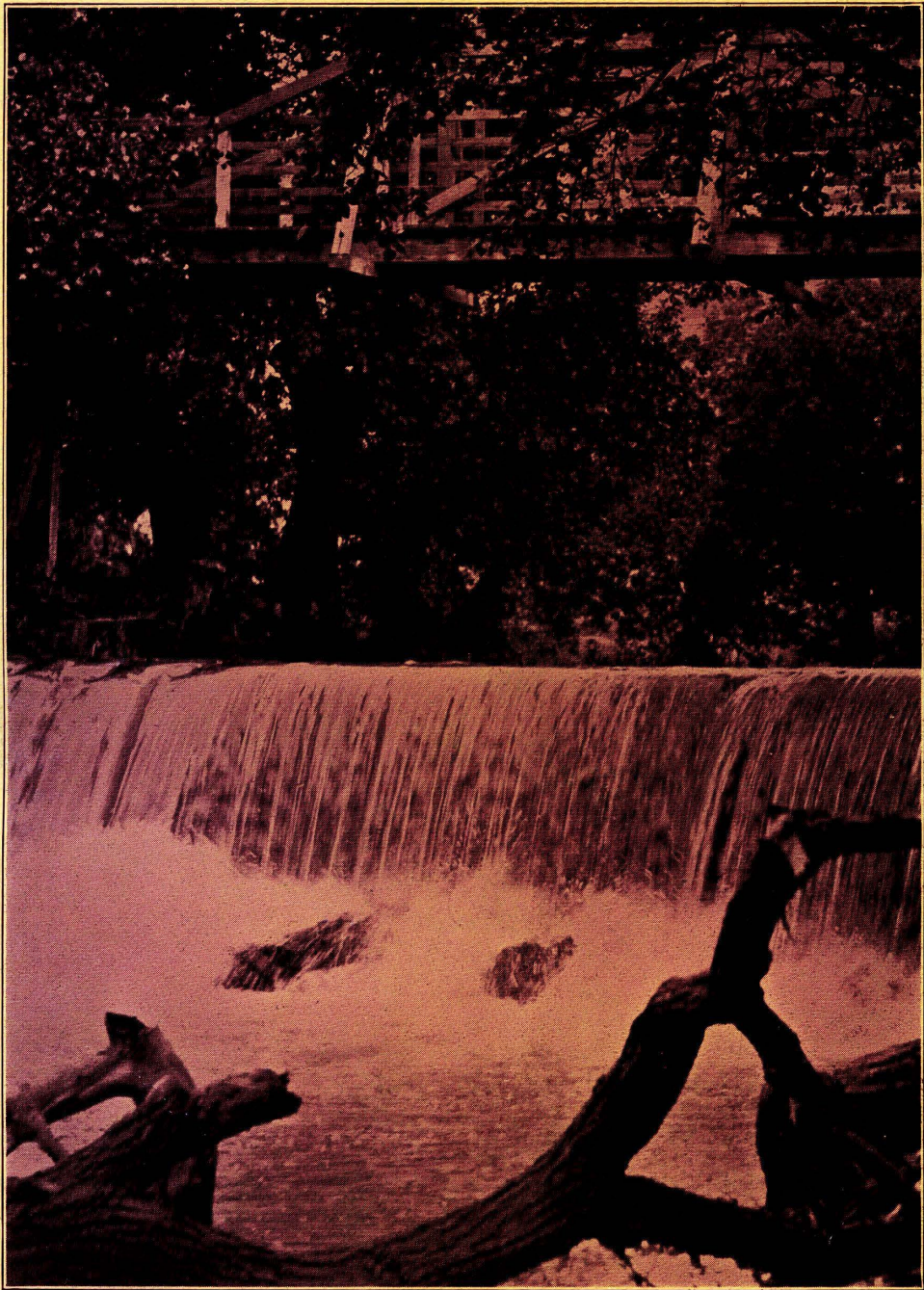
*Entrance to Administration Building*





*Corner of Coliseum*





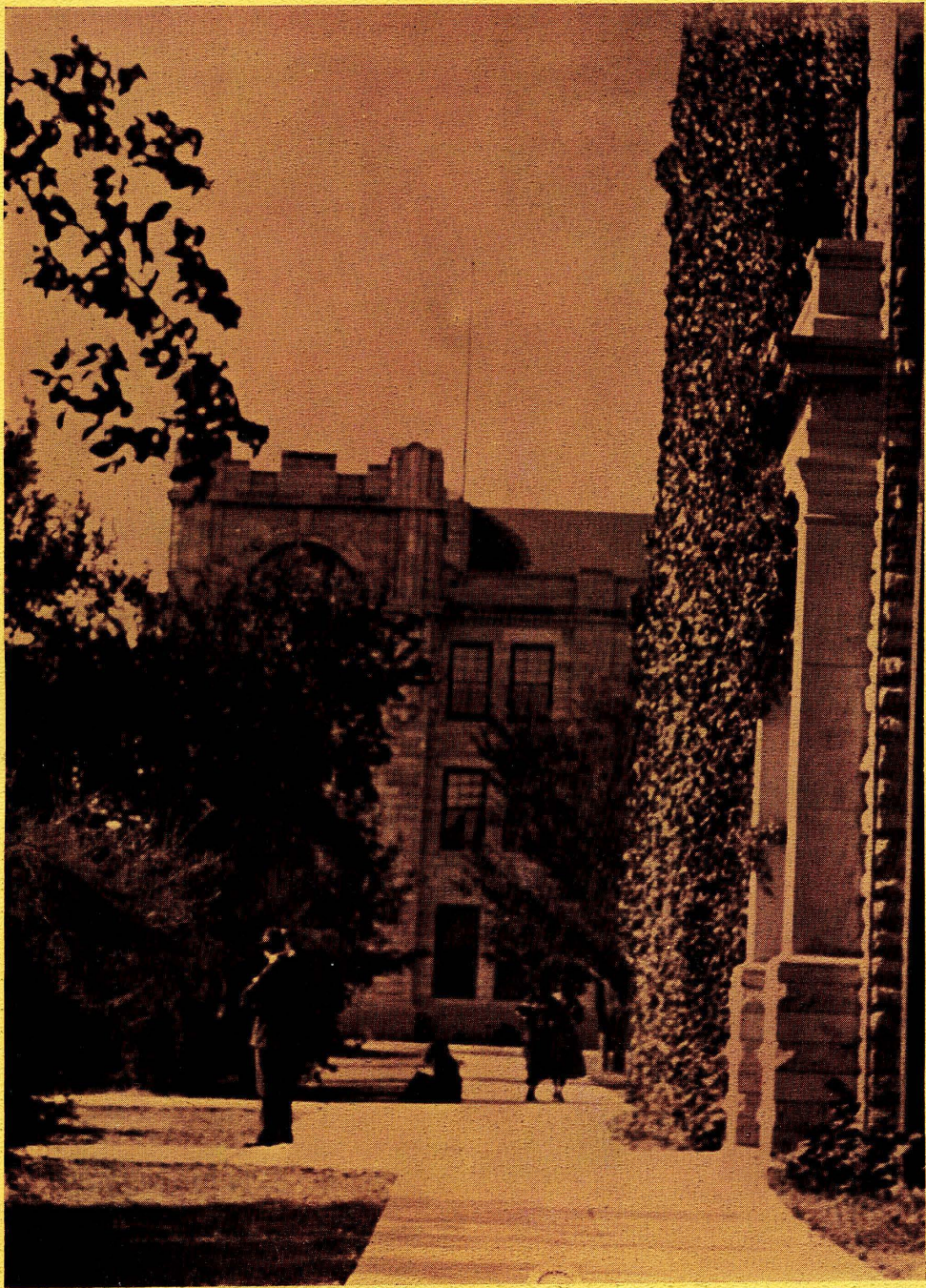
*The Footbridge*





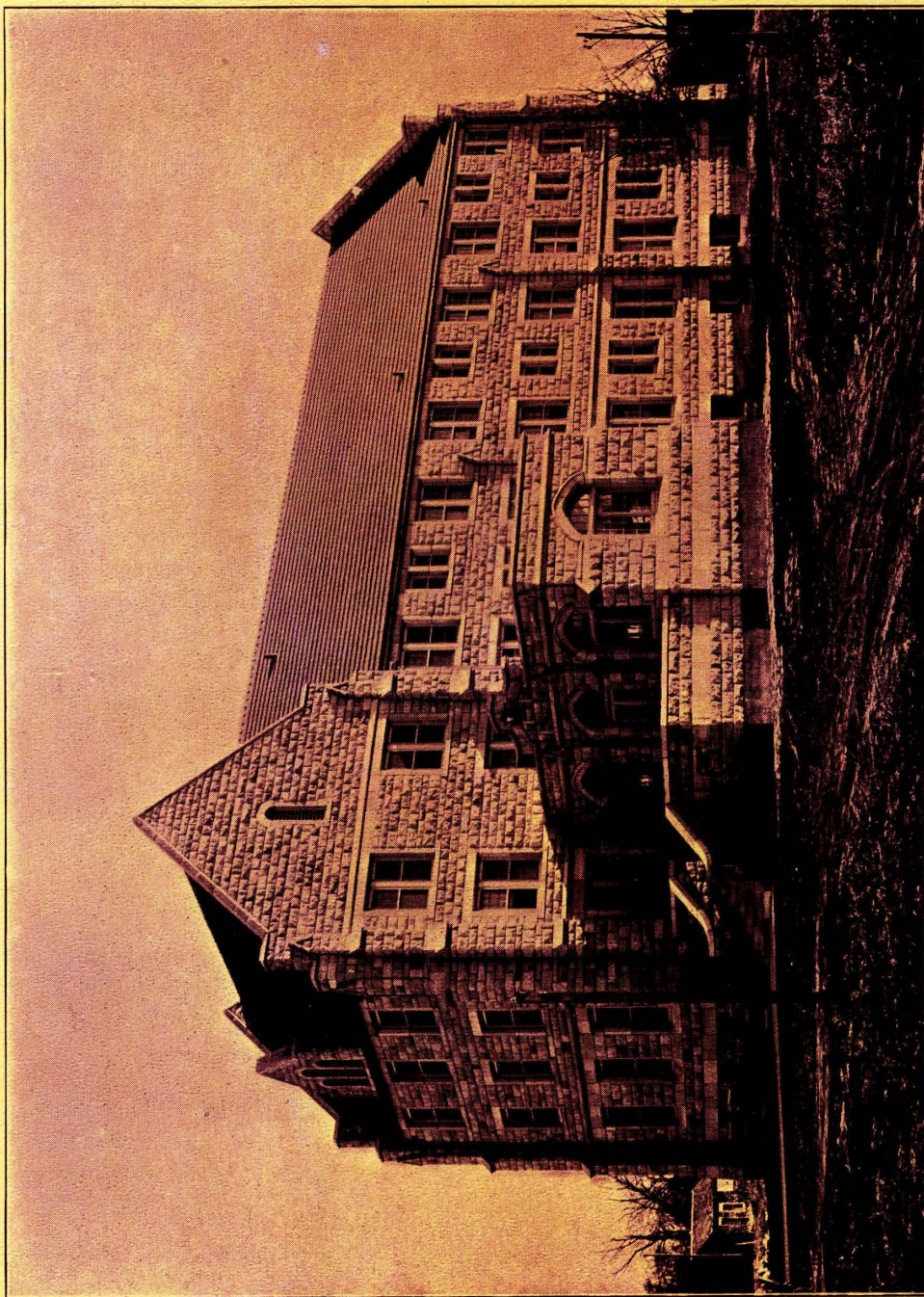
*The Coliseum*





*Looking South from the Administration Building*





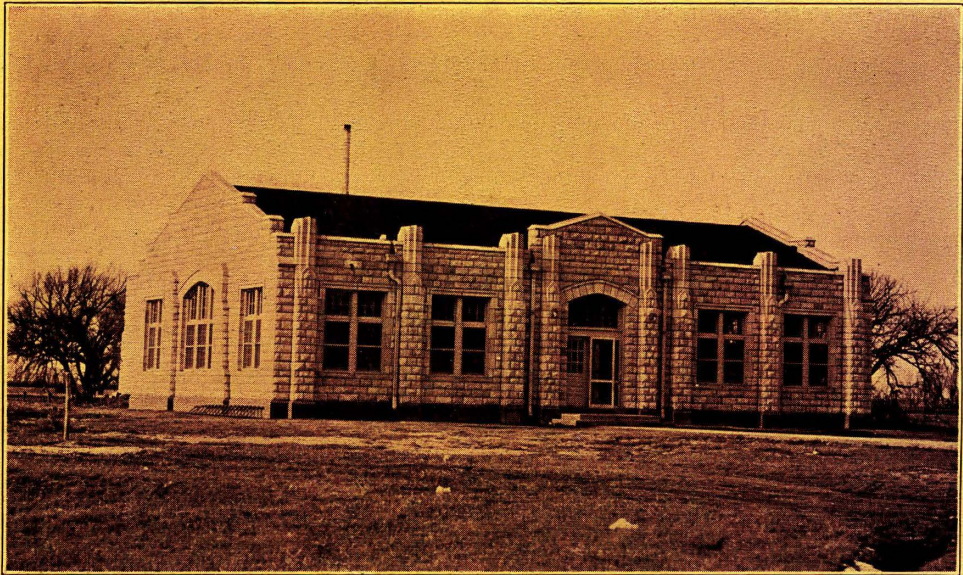
*Custer Hall*



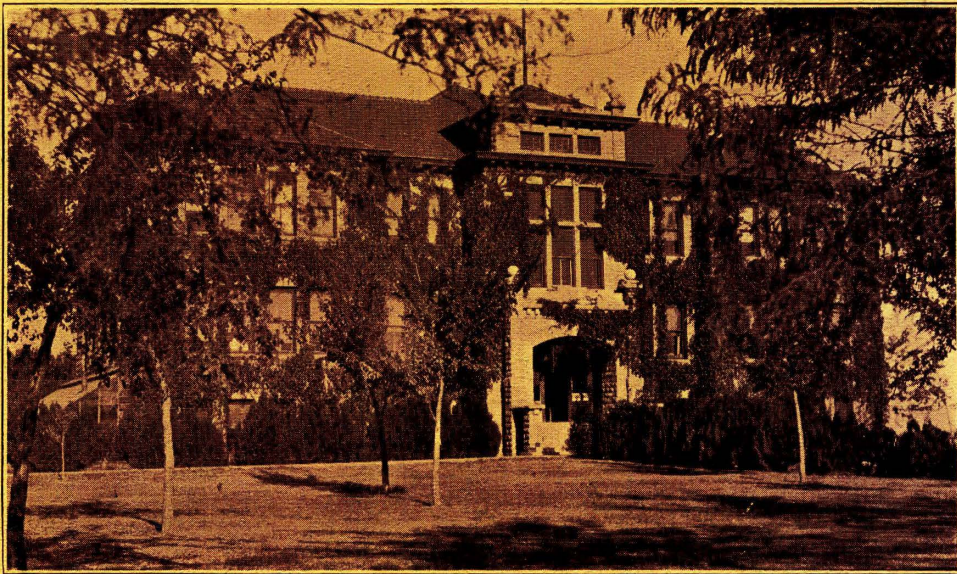


*The President's Home*



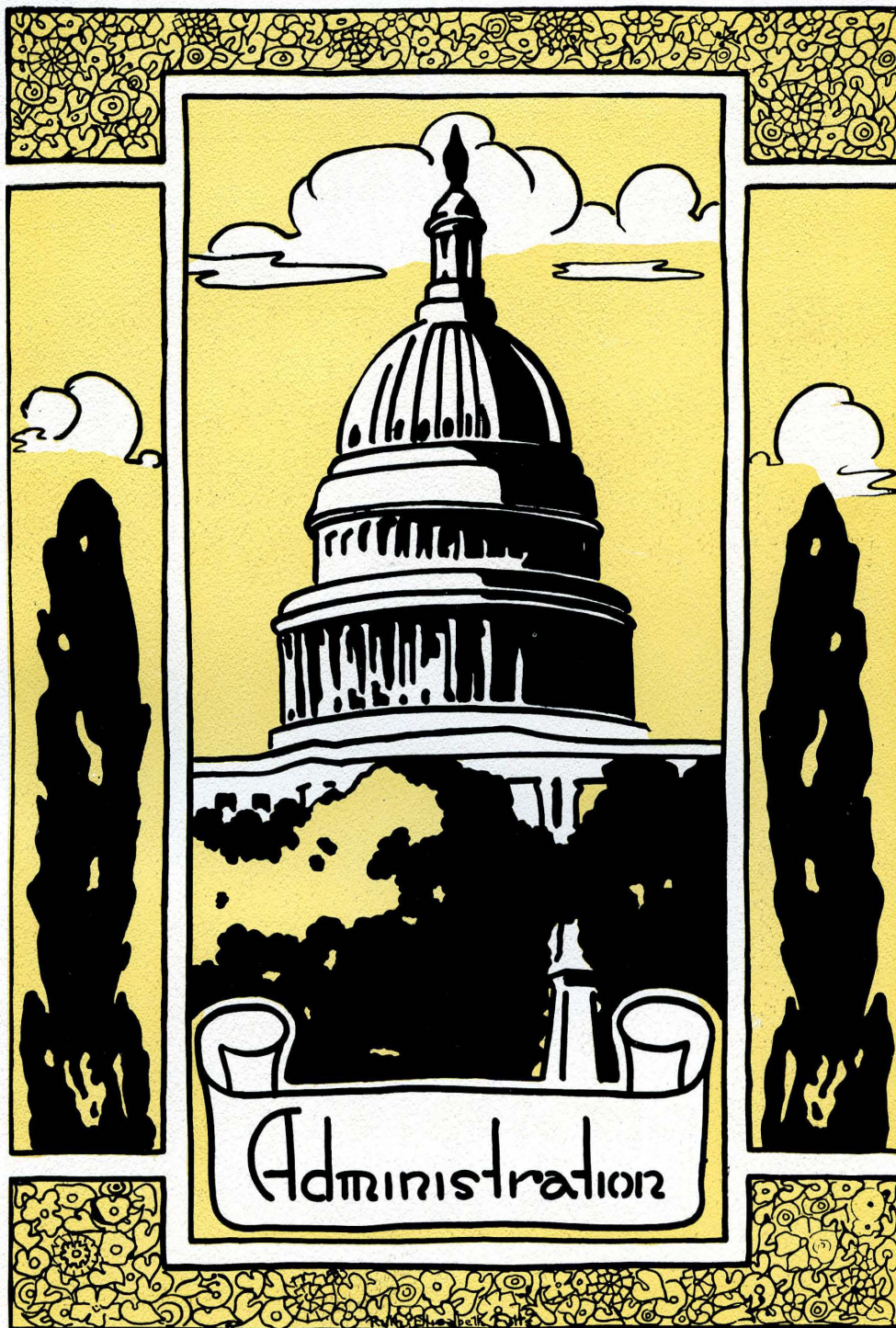


*The Cafeteria*



*The Industrial Building*







## *Board of Administration*

THE State Educational Institutions of Kansas are controlled by the State Board of Administration. The present members of the board are:

JONATHAN DAVIS, Governor . . . . .	<i>Topeka</i>
A. B. CARNEY . . . . .	<i>Manhattan</i>
ROGER WILLIAMS . . . . .	<i>Lawrence</i>
W. P. LAMBERTSON . . . . .	<i>Fairview</i>
A. A. DOERR, Business Manager . . . . .	<i>Larned</i>

We are very grateful to this board for that which they have made possible for us. Each has shown a deep interest in us and we owe them a vote of thanks.



WILLIAM A. LEWIS, B. S., A. B., LL. D.



## *President W. A. Lewis, B. S., A. B., LL. D*

PRESIDENT LEWIS, by his undaunted visions of a bigger and greater K. S. T. C., his untiring efforts and the magnetism of his christian personality, has built our school into a fully accredited college that is unsurpassed in its standards.

But greater even than his upbuilding of the college, has been his influence in moulding, inspiring, and directing the lives of young men and women of the school.

His ability as an executive, his high standards of scholarship, and his fine personality gives assurance of a bigger and better college and the accomplishment of his aims; to bring the College in closer touch with its alumni and former students, and to make the College of greater service to the State.





FLOYD B. LEE, A. B., A. M.  
*Dean of the Faculty and Dean of Extension*  
Kansas State Normal School; University of Kansas.



CHARLES A. SHIVELY, A. B., A. M.  
*Professor of Education*  
Ex Officio City Superintendent; Kansas State Normal School; University of Kansas; University of Chicago.



LULU MCKEE  
*Assistant Professor of Education*  
Bowman Memorial Kindergarten Training School; Washburn College; University of Kansas; Special Work in Story Telling with Martha Sherwood, Richard T. Wyche and Georgiana Speer.

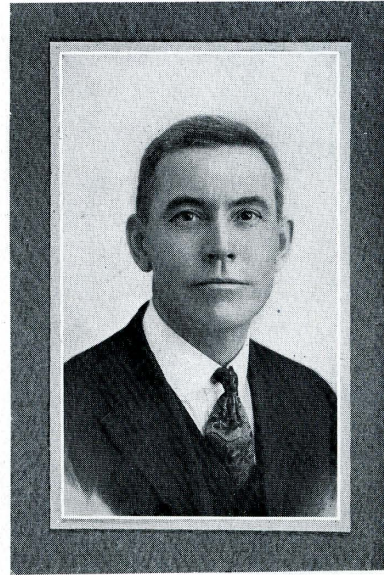


JOSEPHINE WEATHERLY, B. O., B. S., B. M.  
*Assistant Professor of Education*  
Kansas State Christian College; Kansas State Teachers College, Emporia; University of Chicago; Study in Germany.

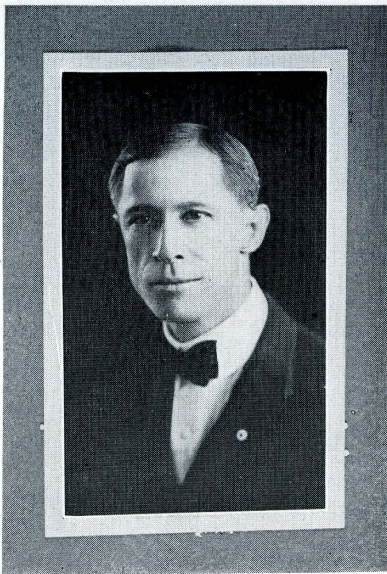




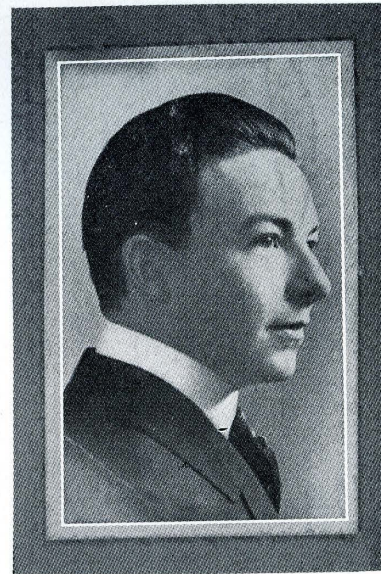
MARIA A. STEVENSON  
*Assistant Professor of Education*  
Lane University; Fort Scott Kansas  
Normal School; Kansas State Normal  
School; Baker University.



C. E. RARICK, A. B.  
*Professor of Rural Education*  
Kansas Wesleyan University; Uni-  
versity of Colorado; University of Kansas.

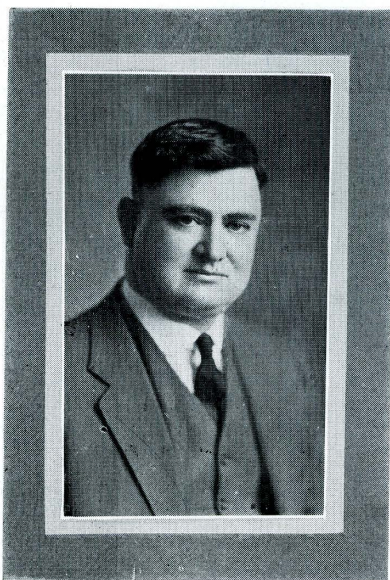


CHARLES F. WIEST, D. D.  
*Professor of Literature*  
Gettysburg College; Gettysburg  
Theological Seminary; Midland College.

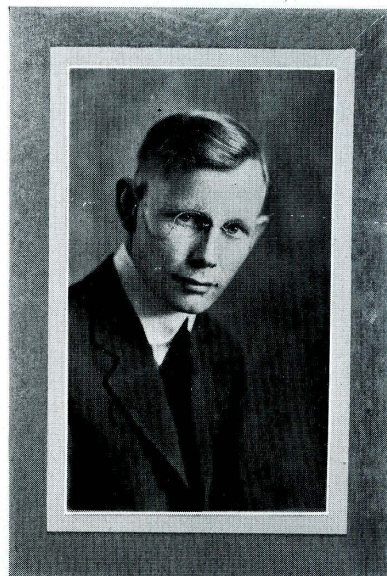


JAMES R. START, B. S.  
*Assistant Professor of Literature*  
Fort Hays Kansas Normal School;  
Northwestern University School of Ora-  
tory.





JAMES E. ROUSE, B. S., M. S.  
*Professor of Agriculture*  
Teachers' College, Kirksville, Mo.;  
University of Wisconsin; Kansas State  
Agricultural College.



FRED W. ALBERTSON, B. S.  
*Associate Professor of Agriculture*  
Fort Hays Kansas Normal School;  
University of Missouri.

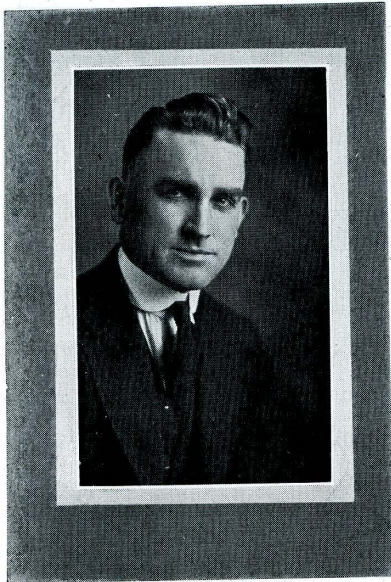


FRANK P. MANDEVILLE, A. B.  
*Professor of Physical Education for Men*  
University of Kansas.



MARTHA HILL  
*Professor of Physical Education for Women*  
Kellogg School of Physical Education;  
Columbia University; Vestoff-Serova Rus-  
sian School of Dancing.





WM. D. WEIDLEIN

B. S. in Civil Engineering; Professor of  
Physics and Superintendent of Power and  
Heat, University of Kansas.



L. D. WOOSTER, A. B., Ph. M.

*Professor of Biological Sciences*

Kansas State Normal School; University  
of Wisconsin.



ROY RANKIN, A. B., A. M.

*Professor of Chemistry and Bacteriology*

Kansas State Normal School; University  
of Kansas; Harvard University.

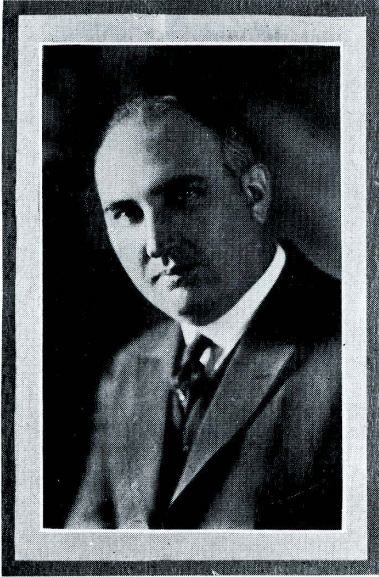


LULU M. BICE, B. S.

*Librarian*

Kansas State Normal School; Fort Hays  
Kansas Normal School; University of  
Illinois.





DR. A. M. VANCE, A. B., B. E., A. M.  
*Professor of Commerce*  
James Millikin University, Peru State  
Normal; Nebraska Wesleyan University;  
University of Nebraska.



JULIA F. RANDS, A. B.  
*Professor of Stenography*  
University of Nebraska; Nebraska  
School of Business.

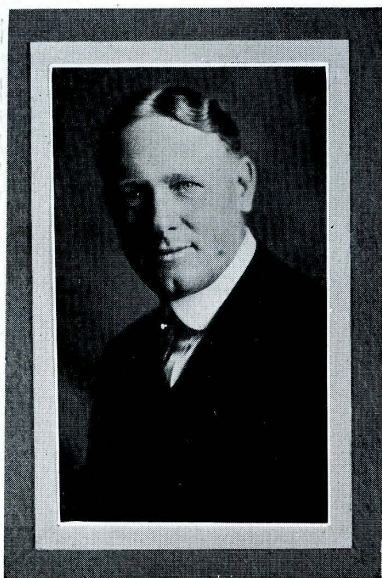


ESTHER M. SCOTT  
*Professor of Accounting*  
Nebraska University, Lincoln Business  
College.



EDWARD E. COLYER, A. B., A. M.  
*Professor of Mathematics*  
Cooper College; University of Kansas.





HENRY EDWARD MALLOY, B. S.  
*Director of Music*

Kansas State Normal School; Bethany College; Voice under George Hamlin, Chicago; Ella Bachus-Behr, Berlin; Hinshaw of Metropolitan Opera, New York; George Ferguson, Berlin; Kirk Towns, Berlin.



ANNIE LAURIE GIBSON  
*Professor of Public School Music*

Illinois State Normal; Northwestern University; Voice under Mrs. Franklin Knight, St. Louis.



LUCILE FELTON  
*Assistant Professor of Piano*

Kansas State Teachers College, Hays; Pupil of Alexander Raah, Caruthers Normal School of Piano, Chicago.



ROLLINS AN-GOVE SEABURY, A. B.  
*Professor of Musical Theory*

University of Maine; University of North Dakota; Northwestern University.





BERNARD W. MILLER  
*Professor of Piano*

Piano and Theory at Ohio Wesleyan University; Pupil of Les Tectonius; Berlin, Germany, under Emil Paur, Theory with Davis. Conservatoire de Montpellier, Montpellier, France.



ELIZABETH J. AGNEW, B. S.  
Kansas State Agricultural College;  
Columbia University.

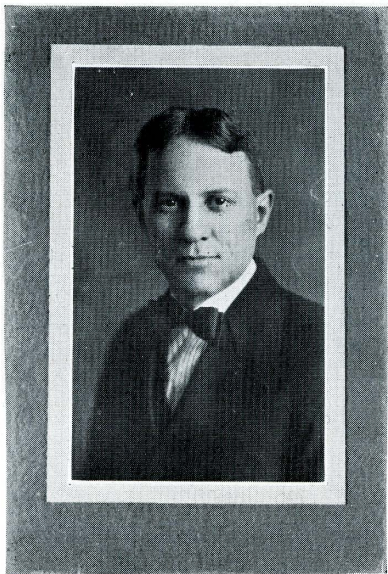


ETHELL SNODGRASS, B. S., A. M.  
Purdue University; Columbia University.



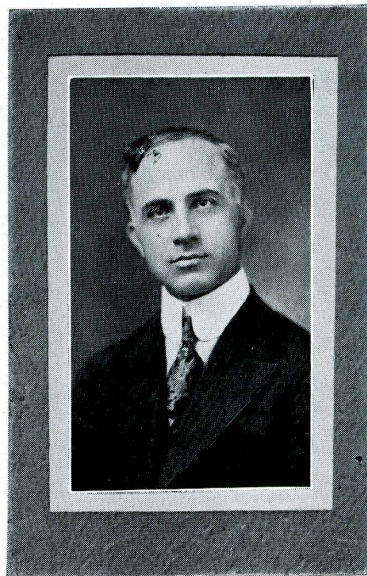
ROSALIE BLAKE, B. S.  
Ohio State University; Columbia University; Chicago University.





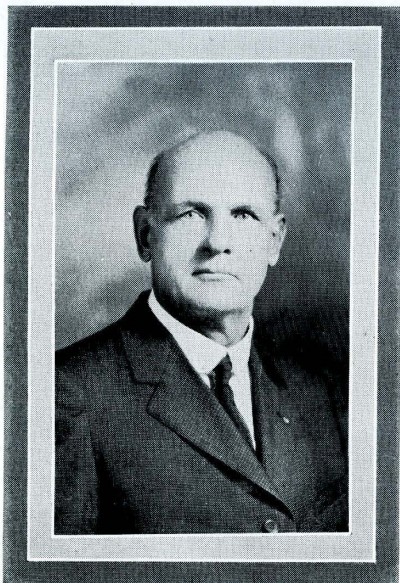
EDWIN DAVIS, B. S.  
*Professor of Manual Arts*

Fort Hays Kansas Normal School;  
Kansas State Normal School; Manual  
Training Normal; Kansas State Agri-  
cultural College.



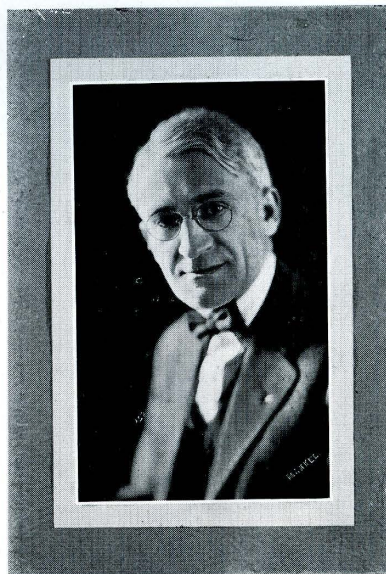
MODESTO JACOBINI, A. B.  
*Professor of Modern Languages*

Liceo, Taranto, Italy; American Inter-  
national College; Yale University; New  
York University; University of Chicago.



R. L. PARKER, B. L., B. S., A. M.  
*Professor of History*

Ottawa University; University of  
Chicago.



VICTOR C. JOHNSON  
*Professor Telegraphy and Station  
Accounting*

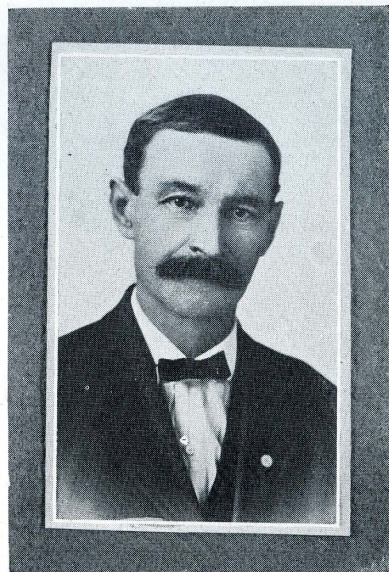




JENNETTE M. POWELL  
*Professor of Art*

Provincial Art School; Montreal Art Association; New York School of Fine and Applied Art; Columbia University; William Hawthorne Summer School; Byrd Cliff Summer School.

FRED J. WAGNER  
*Custodian*



## Office Girls

EVA HEDGES . . . . . *Secretary of Extension Division*  
EDITH HOKE . . . . . *Secretary to the Registrar*  
MARGARET MCJIMSEY . . . . . *Financial Secretary*  
GRACE ROUSEY . . . *Secretary to Public Service Department*

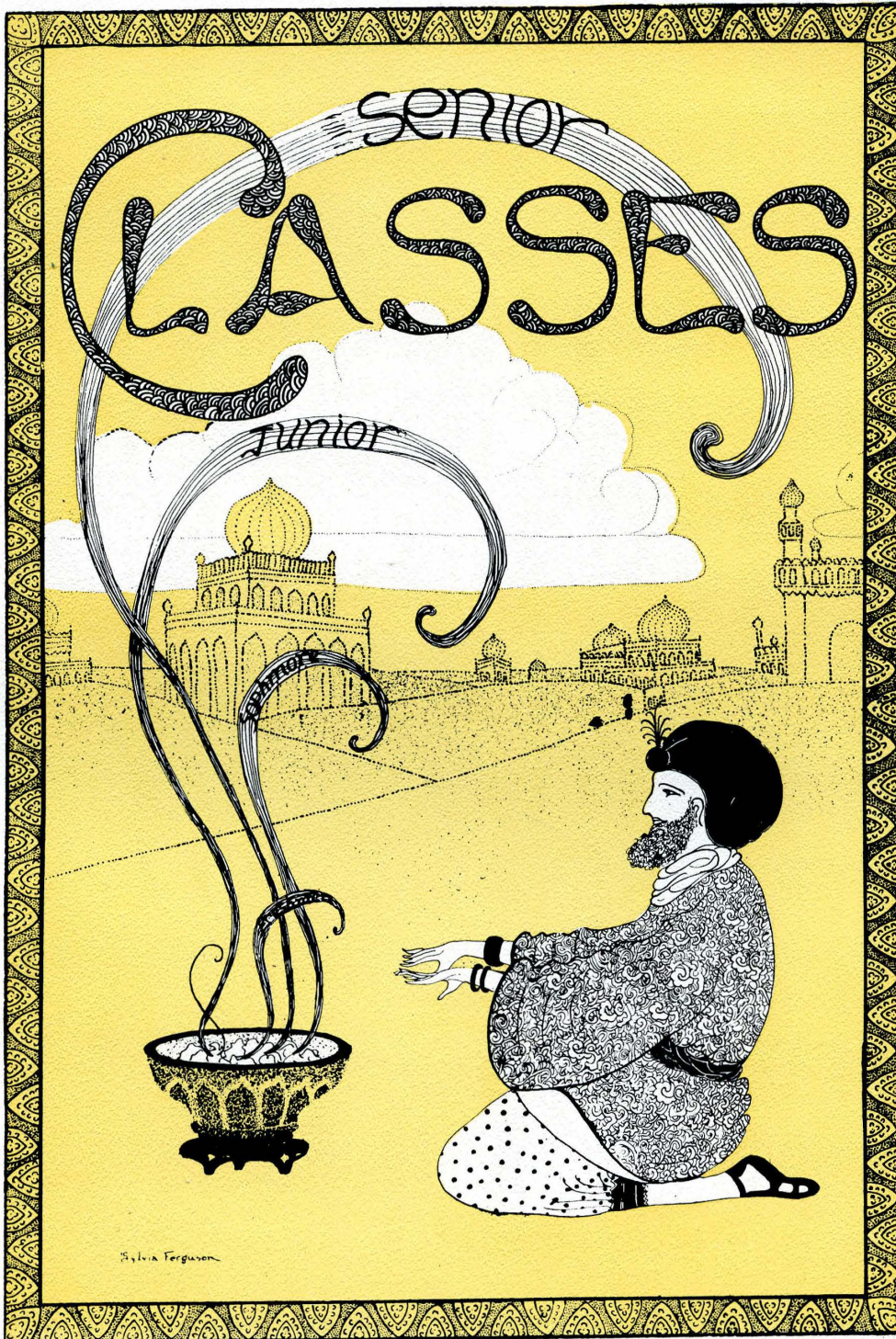




## Training School Faculty

MAUDE MCMINDES, B. S.	Principal High School
ANNA LAURIE GIBSON	High School, Music
PRUDENCE MORGAN	High School, Home Economics
ELGIE FIREOVED, B. S.	High School, Commerce
MARTIN EASTLACK, B. S.	High School, Manual Training
LACY HERRICK	High School, English
MISS REARICK	High School, English
KATHRYN McLAIN, B. S.	High School, History
C. H. BROOKS, B. S.	High School, Latin
E. C. COLIN, A. B.	High School, Science
FRANK CARMAN, B. S.	Principal Junior High School
ADA TAYLOR	Ass't Principal Junior High School
PEARL SHUTTS	Sixth Grade
MRS. O'NEIL	Fifth Grade
ROSELLA MCCARROLL	Fourth Grade
GAYNELLE DAVIS	Third Grade
GLADYS MORRISON	Second Grade
ANNABELLE SUTTON	Primary
MAE PAUL	Overflow Fourth and Fifth





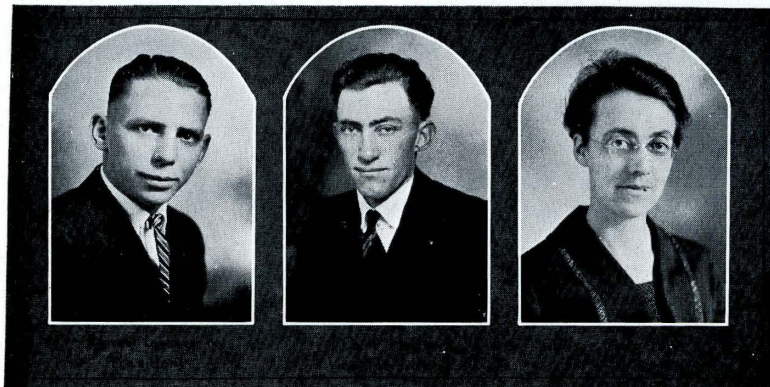






## Senior Officers

ERNEST LORBEER . . . . .	<i>President</i>
CARL HODSON . . . . .	<i>Vice-President</i>
DIXIE CARPENTER . . . . .	<i>Secretary and Treasurer</i>







PAUL LEMON

Portis

Major—Agriculture

Chorus.

*An honest countenance is the best passport.*

BENJAMIN WOOTERS

Hays

Major—English

Y. M. C. A., American Legion.

*He thought as a sage, though felt as a man.*

LENNIE NELSON

Gove

Major—Home Economics

Gamma Kappa Pi, W. A. A., Y. W. C. A.,  
Chorus.

*Of soul sincere, in action faithful and in  
honor clear.*

MABEL STADTER

Miller

Major—Public School Music

Recital, Orchestra, Opera, Chorus.

*Loyal in friendship and enthusiastic in a  
good cause.*

EVA SPENCER

Hays

Major—Home Economics

Art Lovers' Club, Gamma Kappa Pi,  
Chorus, Y. W. C. A.

*Contentment gives a crown  
Where fortune hath denied.*

DIXIE CARPENTER

Hays

Major—Home Economics

Gamma Kappa Pi, Tau Upsilon Phi,  
Y. W. C. A.

*Happy when alone and cheerful when in  
company.*

IRENE MORRIS

Osage City

Major—Mathematics

Y. W. C. A., Sports, Chorus.

*Says little but certainly gets there.*

IVAN TOWNSDIN

Hugoton

Major—Agriculture

Editor of the Leader, Chorus.

*Virtue is its own reward.*

CHARLES LEWIS

Palco

Glee Club, Band, Chorus, Y. M. C. A.

*When love and duty clash,  
Let duty go to smash.*





CARL HODSON

Hays

Major—Commerce  
Commercial Club, Chorus, Oratory.  
*Words are women, deeds are men.*

N. LUCILLE JONES

Garden City

Major—Commerce  
Commercial Club, Alpha Tau Kappa.  
*Within the cosiest corner of my dreams,  
He sits, high throned above all gods that be.*

ANNA JOY

Hays

Major—Commerce  
Commercial Club.  
*I wish I knew the good of wishing.*

BURNETTE McMICHAEL

Lincoln

Major—Commerce  
Alpha Tau Kappa, Commercial Club,  
W. A. A., Chorus, Y. W. C. A.  
*It is easy, but it is a fine thing, nevertheless,  
to be modest when one is great.*

LUCY HOKE

Hays

Major—Music  
Sextette, Chorus.  
*Great minds are easy in prosperity and quiet  
in adversity.*

SYLVIA FERGUSON

Salina

Major—Fine Arts  
Gamma Sigma, W. A. A., Art Lovers' Club.  
*She has cheerful and winning ways,  
Her charm and humor always stays.*

RUTH PARKHURST

Hays

Major—English  
Chorus, Y. W. C. A.  
*Life is not dated merely by years.  
Events are sometimes the best calendars.*

OTIS DOANE

Goodland

Major—History  
Debate, Y. M. C. A.  
*I am resolved to laugh and grow fat until  
forty.*

ALTHEA SIMS

Hays

Major—Fine Arts  
Gamma Sigma, Art Lovers' Club, W. A. A.  
*The gladdest of all when glad  
The maddest of all when mad.*





LINDSEY CLARK

Hays

Major—Commerce  
Commercial Club, Debate.

*The worst of life is that there is so little of it.*

AGNES MINNIX

Modoc

Major—Home Economics  
Gamma Kappa Pi, W. A. A., Reveille  
Staff, Y. W. C. A., Sports.

*She seems dignified, but wait 'til you know her.*

ERNEST LORBEER

Webster

Major—Agriculture  
Football, Capt. Basketball and Baseball,  
Kappa Phi Alpha, "K" Club, Y. M. C. A.  
Cabinet.

*The leader of the Senior Class,  
His office bespeaks his worth and esteem.*

JENNIE WAGNER

Hays

Major—Commerce  
Zeta Pi Phi, W. A. A., Commercial Club,  
Y. W. C. A.

*In regard to her height you need feel no fear,  
As you heighten the figure you heighten the  
charm.*

BERNARD BRUNGARDT

Hays

Major—Public Speaking  
Reveille Staff, Debate, Band.

*Tends to his business in an unpretending way.*

FLORIS SHADE

Hays

Major—Commerce  
"K" Club, Capt. Football, Basketball,  
Glee Club, Baseball.

*"Stay-comb Shade."*

GERTRUDE WINKLER

Rozel

Major—Voice  
Pres. Y. W. C. A., Sextette, Chorus, Band,  
Student Council.

*Real worth requires no interpreter.*

MRS. LYLE DAVIS

Lorraine

Major—Home Economics  
Gamma Kappa Pi, Chorus Y. W. C. A.  
*Two human loves make one divine.*

LYLE DAVIS

Phillipsburg

Major—Agriculture  
Y. M. C. A.  
*He hath good abilities, a genial temper and  
no vices.*





LAWRENCE GROSS

Hays

Major—Mathematics  
Reveille Staff, Glee Club, Chorus, "K"  
Club.

*Here's to matrimony, the high sea for which  
no compass has yet been invented.*

RALPH CONGER

Natoma

Major—History  
"K" Club, Football, Baseball, Chorus,  
Y. M. C. A.

*His sayings are generally like women's  
letters; all the pith is in the postscript.*

BESSIE TILLOSTON

Hays

Major—Music  
Gamma Sigma, Sextette, Y. W. C. A.,  
Chorus.

*She has the charm of courtesy and gracious  
words so sweet.*

WINIFRED ELDER

Waldo

Major—English  
Gamma Sigma, Y. W. C. A.

*One that excels in all she does, and in the  
essential vesture of creation does bear all  
excellency.*

MARY CHITTENDEN

Hays

Major—Physical Education  
Gamma Sigma, W. A. A.

*A heart big enough for every joy.*

FREDA BROOKS

Hays

Major—English  
Gamma Sigma, Art Lovers' Club, W. A. A.,  
Chorus, Y. W. C. A.

*Modest, and simple, and sweet, the very type  
of Priscilla.*

LETHA BEST

Bunkerhill

Major—Commerce  
Gamma Sigma, Tau Upsilon Phi, Editor  
Reveille, Commercial Club.

*Her loveliness, so absolute, that what she  
wills to do or say,  
Seems wisest, virtuous, discreet, best.*

ADELBERT COWAN

Hays

Major—Manual Arts  
Glee Club, Chorus, Football, "K" Club,  
Reveille Staff.

*Who trusts himself to women or to waves,  
Should never hazard what he fears to lose.*

LYNN ORDWAY

Palco

Major—English  
*True to himself.*





ORRIN DON THURBER

*Esbon*

Major—General Science

Chorus, Oratory.

*Why should we be punished if we stray,  
When all our guides dispute which is the way.*

FRED ROSS

*Webster*

Major—History

Debate, Public Speaking.

*He is a gentleman, because his nature is  
kind and affable to every creature.*

NELLIE MUMERT

*Hill City*

Major—Public School Music

Tau Upsilon Phi, Zeta Pi Phi, I. K. S. K.,  
Y. W. C. A., Chorus.

*A smile that reaches clear to Colorado.*

MRS. FRED ROSS

*Webster*

Major—English

Chorus, Gamma Kappa Pi.

*Where the stream runneth smoothest, the  
water is deepest.*

OMA BARRY

*Brownell*

Major—Home Economics

Gamma Kappa Pi, Y. W. C. A., Chorus,  
W. A. A.

*This is the thing that I was born to do.*

MRS. W. T. MCCARTHY

*Hays*

Major—Home Economics and Mathematics

Gamma Kappa Pi, Camp Fire, Chorus.

*A lady of quiet—she acts instead of only  
planning.*

HAZEL DAWLEY

*Larned*

Gamma Kappa Pi, Y. W. C. A., W. A. A.,  
Chorus.

*Joy rises in me like a summer's morn.*

WM. T. MCCARTY

*Hays*

Major—Agriculture

Boy Scout Training.

*That man that hath a tongue, I say, is no man  
If with his tongue he cannot win a woman.*

FRED KELLER

*Garfield*

Major—History and English

Y. M. C. A.

*The world knows nothing of its greatest men.*





KATHRYN CRETCHER *Scott City*

Major—English  
Y. W. C. A., W. A. A.  
*The habit of agreeing seems to be slippery and dangerous.*

ETHEL SHUTTS *Hays*

Major—Public School Music  
Orchestra, Chorus.  
*I am the master of my fate;  
The captain of my soul.*

THEODORE RARDIN *Plainville*

Major—Manual Arts  
K. Club, Glee Club, Chorus, Football,  
Basketball.  
*A college joke to cure the "dumps."*

EMMA WILSON *Garden City*

Major—English  
Y. W. C. A.  
*Always where duty calls.*

GEORGE TENNANT *Langdon*

Major—History  
*A man you really ought to know.*

BERTHA BROWN *Scott City*

Major—Home Economics  
W. A. A., Gamma Kappa Pi.  
*Man is Nature's sole mistake.*

VIVIAN CZESKLEBA *Hays*

Major—English  
I. K. S. K., Y. W. C. A., Chorus.  
*A master of poetry, master of prose,  
A student and scholar wherever she goes.*

BEULAH RICHARDSON *Glen Elder*

Major—Home Economics  
W. A. A., Gamma Kappa Pi, Y. W. C. A.  
*Believes in the old adage, "Let the morrow  
take care of itself."*

GENEVA HERNDON *Amy*

Major—English and Home Economics  
Gamma Kappa Pi, Y. W. C. A., W. A. A.  
Chorus.  
*There's a woman like the dewdrop; she's purer  
than the purest.*

BERNICE FOWLER *Brookville*

Major—Public School Music  
Zeta Pi Phi, Y. W. C. A. Cabinet, Chorus,  
Sextette.  
*Is there a heart that music cannot melt?  
Alas! how is that rugged heart forlorn.*

DICKEY JEWELL FISH *LaCrosse*

Major—Home Economics  
Gamma Kappa Pi, Y. W. C. A.  
*Silence speaks much, words more, but actions  
most.*



# JUNIOR





## Junior Officers

HAROLD MESSICK . . . . .	<i>President</i>
JOHN BYRD . . . . .	<i>Vice-President</i>
ROBERT GULKISON . . . . .	<i>Secretary and Treasurer</i>







HAROLD MESSICK

*Healy*

Kappa Phi Alpha, Y. M. C. A., Reveille Staff.

*My heart is wax, moulded as she pleases, but enduring as marble to retain.*

JOHN BENSON

*Marquette*

Kappa Phi Alpha, Y. M. C. A., Chorus.

*Let not women's weapons, water drops, Stain my cheeks.*

GLADYS BAIRD

*Hays*

Zeta Pi Phi, W. A. A., Basketball.

*She seems dignified—but wait till you know her.*

EDITH VANCE

*Rexford*

Commercial Club, Y. W. C. A.

*As quiet as a mouse is she, and yet no trap has caught her.*

MARJORIE LOGAN

*Arlington*

Zeta Pi Phi, W. A. A., Chorus, Band, Robin Hood.

*Blessed with a deep sense of humor, she enjoys life.*

LAURA PATTON

*Sterling*

Sports, Y. W. C. A.

*Talk and the world talks with you, Crab and you sit alone.*

INA MILLER

*Salina*

Gamma Kappa Pi, Alpha Tau Kappa, I. K. S. K., W. A. A., Y. W. C. A.

*Hope not for impossibilities.*

GILBERT MEYER

*Bison*

Kappa Phi Alpha, Dramatics, Chorus, Commercial Club, Band.

*Oh, that it were my chief delight to do the things I ought.*

THOMAS ARNOLD

*Hays*

Y. M. C. A.

*I work with patience which is almost power.*





WILBUR RILEY *Scott City*  
Pres. "K" Club, Glee Club, Chorus.  
*Hunting, coaching, and the ladies, God bless 'em.*

JOHN BYRD *Bloomington*  
"K" Club, Capt.-Elect Football, Baseball,  
Y. M. C. A.  
*Here's to the love that lies in a woman's eyes, and lies, and lies, and lies,—and lies.*

DAISY BEEBY *Hays*  
Y. W. C. A., Chorus, Sports.  
*And yet I'll swear none can compare with this ideal Miss.*

JESSIE MYLES *Osborne*  
Alpha Tau Kappa, W. A. A., Chorus,  
Sports.  
*In such a smile as well may designate,  
Sobs love's eternal lie—"Lo, I can wait."*

INEZ MCCALL *Vesper*  
Zeta Pi Phi, Commercial Club.  
*While in my senses I shall find nothing preferable to a pleasant friend.*

IDA MYLES *Osborne*  
Alpha Tau Kappa, W. A. A., Chorus,  
Sports.  
*We are fond of each other, because our ambitions are the same.*

MILDRED KNOWLES *Kirwin*  
Gamma Kappa Pi, I. K. S. K., Y. W. C. A.  
Cabinet.  
*Modesty in a woman is like color on her cheek—decidedly becoming.*

EARL REED *Jetmore*  
Kappa Phi Alpha, "K" Club, Football,  
Y. M. C. A.  
*Usually prepares his lessons—either in class or "sometimes" at home.*

NOVA MOODY *Hays*  
*Brevity of expression is a proof of wisdom.*





ROBERT GUILKSON

Lincoln

Glee Club, Commercial Club, Chorus.  
*The iron tongue of midnight hath told twelve.  
From thee I must flee.*

ROSS BLAND

Gove

Y. M. C. A., Baseball.  
*Have I found my heavenly jewel?*

BEN RENNER

Rush Center

Kappa Phi Alpha, Band, Chorus, Y. M. C. A.  
*I hate the man who builds his name on  
ruins of another's fame.*

MARANDA ASHWORTH

Quinter

Y. W. C. A., Commercial Club.  
*There is occasion and cause, why and where-  
fore in all things.*

NELLIE SITES

Hays

Art Lovers' Club, Y. W. C. A., Dramatics.  
*The great end of life is not knowledge, but  
action.*

IRWIN CONANT

Utopia

Football, Y. M. C. A.  
*A deep thinker—always of "Wells."*

RALPH WARD

Clafin

Commercial Club, Y. M. C. A.  
*With thee conversing I forget all time.*

JOHN SITES

Hays

Y. M. C. A.  
*If only chemistry books attracted John as do  
ruffles and frills his success as a chemist would  
not be questioned.*

GLADYS FRANK

Jewell

Commercial Club, Y. W. C. A.  
*Her name tells it all.*





W. O. JOHNSON

Hays

Baseball, Football, Y. M. C. A.  
*Trivial affairs of the heart bother him not.*

AVIS COOPER

Delphos

I. K. S. K., Y. W. C. A., Chorus.  
*She has a smile that she likes to wear,  
When days are gloomy or days are fair.*

BERNICE PEPPER

Stockton

Commercial Club, Y. W. C. A., Sports.  
*Smile and the world smiles with you, crab  
and you crab alone.*

MYRTLE COSTNER

Hays

Alpha Tau Kappa, Gamma Kappa Pi,  
W. A. A., Sports, Chorus.  
*Thinks Lor-beer is the best.*

EDNA HOOD

Oakley

Commercial Club.  
*Let me fly from the temptations which I  
cannot resist.*

LOYSE McELHANEY

Princeton, Mo.

Alpha Tau Kappa, W. A. A., Chorus,  
Y. W. C. A.  
*I have no other reason but a woman's reason  
To think him so, because I think him so.*

ESTHER GORDANIER

Randall

Y. W. C. A., Art Lovers' Club, Sports.  
*To wield a brush with ease and skill,  
This is the mission she hopes to fill.*

EDGAR REED

Assaria

Debate, Y. M. C. A., Chorus.  
*He is social like, he hates to walk around by  
himself.*

HAZEL BLAZER

Athens, Ohio

*Pray, little girl, what kind of curlers do you  
use?*





CHESTER MAXWELL *Quinter*  
Y. M. C. A., Chorus, Band.  
*"A merrier man I never spent an hour's  
talk withal."*

EARL OYER *Webster*  
Kappa Phi Alpha, Band, Leader Staff,  
Art Lover's Club, Y. M. C. A.  
*Well fitted in arts, glorious in arms, nothing  
becomes him ill that he would well.*

ALICE PAYNTER *Osborne*  
Y. W. C. A.  
*Whatever she attempts, she does well.*

MRS. LULU WYNETTE *Larned*  
Commercial Club, Chorus.  
*Does not esteem herself as highly as her  
friends do.*

EDITH HOKE *Hays*  
Tau Upsilon Phi.  
*Self-confidence is the first requisite to great  
undertakings.*

EDNA JENSEN *Quenema*  
Dramatics, Art Lover's Club.  
*Cupid—whither dost thou stray?*

MARGARET MCJIMSEY *Hays*  
Tau Upsilon Phi, Commercial Club.  
*Mistress of mine own self and mine own soul.*

JACOB GROSS *Hays*  
Chorus.  
*I can look sharp as well as another, and  
let me alone to keep the cobwebs out of my eyes.*

FRED BELL *Simpson*  
Y. M. C. A., Commercial Club.  
*He who considers too much will perform little.*





ANNA LAURA BLENDER, *Hays*  
*Has the riotous enjoyment of a quiet conscience.*

HANNAH DAVIS, *Scott City*  
*Nothing is impossible to a valiant heart.*

DORIS STIVERS, *Fredonia*  
*I've found this a life full of kindness and blessing.*

ESTELLA THOUVENELL, *Winona*  
*Leisure is time for doing something useful.*

MARY WING, *Lenora*  
*Great talkers are never great doers.*

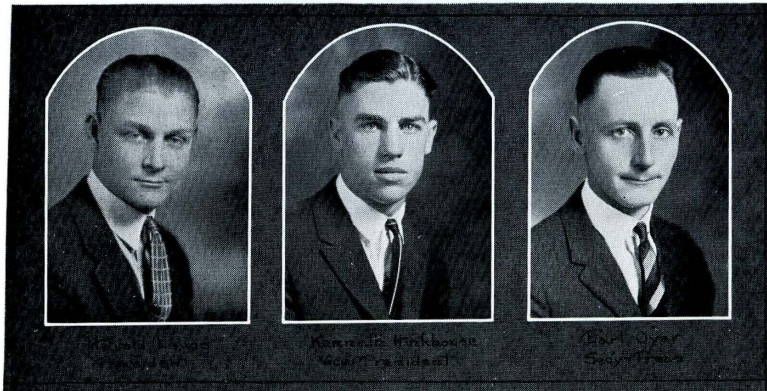






## *Sophomore Officers*

HAROLD LEWIS . . . . .	<i>President</i>
KENNETH HINKHOUSE . . . . .	<i>Vice-President</i>
EARL OYER . . . . .	<i>Secretary and Treasurer</i>







HAROLD LEWIS

Palco

*Shall I, like a hermit, dwell  
On a rock or in a cell?*

HAROLD COMBS

Hays

*A believer in freedom of choosing dates as  
well as in freedom of speech.*

JOSEPHINE HUPFER

Bunkerhill

*She pleased when distant, when near she  
charmed.*

OREL JONES

Kinsley

*Quiet and demure with a smile for all.*

HARRIET KEEFER

Salina

*"Ham" is my favorite.*

ETHEL BOWEN

Bloomington

*What a thing friendship is, world without end.*

ETHEL JAMESON

Salina

*Look into her eyes and you'll see a little angel,  
Look a little longer and you'll see a little imp.*

WAVA BAUM

Wilson

*She never lets her studies interfere with her  
education.*

MAE PALMER

Luray

*Reproof on her lips, but a smile in her eye.*

MARY FARRELL

Hill City

*The mildest manner and the gentlest heart.*

ADLEY LORBEER

Webster

*Come! on the tide of rapture,  
Let me float your soul away.*

WILLIAM HADDOCK

Hays

*A simple man perhaps, but good as gold and  
true as steel.*





RAE PRICKETT

*Simpson*

*Oh, what an endless work I have in hand.*

ALICE MCCABE

*Lyons*

*Oh, what a noble mind is here o'erthrown.*

MATILDA HOWER

*Sylvan Grove*

*Let me live as well as I can and die as I ought.*

ETHEL BELLE SMITH

*Stockton*

*The possessor of two gifts rarely found together: Beauty and personality.*

BERTHA EGGER

*Ellis*

*An inborn grace that lacks nothing of culture.*

OPAL ROSE

*Scott City*

*She was fair and never proud,  
Had tongue at will, and yet was never loud.*

LOUIS CYR

*Aurora*

*Sincerity is the keynote of her character.*

ESTHER GEROLD

*Atwood*

*To live in the hearts we left behind us is not to die.*

MAUDE ADAMS

*Quinter*

*I will be my correspondent to command,  
And do my spiriting gently.*

LEONA ALLBERT

*Hays*

*One of those clever people who can do almost anything with their brush.*

FRIEDA KOHLER

*Lincoln*

*A girl befriended and friendly.*

ANDREW RIEGEL

*Hays*

*He had talents equal to business and aspired no higher.*





FRANK THOMAN

Russell

*His heart runs away with his head.*

FLORENCE BROWN

Webster

*With her went the scent of all things sweet  
and fair.*

OPAL HOLLINGER

Lyons

*Two are better than one.*

SUSAN CHITTENDEN

Hays

*Nothing but mirth can conquer fortune's spite,  
No sky is heavy if the heart be light.*

FREDA VEVERKA

Portis

*Precious things are not always found in  
heaps.*

HAROLD OPDYCKE

Russell

*God made him and therefore let him pass for a  
man.*

PHILOMENA SCHEETZ

Wichita

*They conquer who believe they can.*

KENNETH HINKHOUSE

Palco

*Men have died from time to time, and worms  
have eaten them—but not for love.*

ESTHER STEINLE

Dorrance

*Winding up days with toil and nights with  
sleep.*

LOIS BEARDSLEY

Russell

*The ornament of a meek and quiet spirit.*

ALBERT FISHER

Garfield

*They are never alone that are accompanied  
with noble thoughts.*

LUELLA GRIMES

Lincoln

*How long the evening would be without Bob.*





EMIL SJOGREN

Marquette

*The surest way to hit a woman's heart is to take aim kneeling.*

JESSE L. NELSON

Gove

*A lion among ladies—a most dreadful thing.*

IVA HOUGHTON

Jamestown

*Silence is the perfection of joy.  
I were but little happy, if I could say how much.*

MYRTLE CASSIDY

Monument

*Happiness of all is that her gentle spirit  
Commits itself to yours to be directed.*

ROBERTA ALBACH

Hays

*I've touched the height of human happiness.*

TREVA ECHART

Lincoln

*Will my dreams ever come true?*

RUTH FULTS

Sedalia, Mo.

*A girl whose friendship is worth cultivating.*

ALICE DAVIS

Studley

*With lightest heart to laugh and sing,  
And yet, knows not the worth of it.*

FERN BARCLAY

WaKeeney

*Her ways are ways of pleasantness and all her  
paths are peace.*

ELIZABETH STEINLE

Wilson

*Surely never did there live on earth  
A woman of kindlier nature.*

HARRY ENGSTROM

Oberlin

*It makes me very angry indeed to be wrong  
when I am right.*

EARL BARRY

Codell

*Who lives without folly is not so wise as he  
thinks.*





W. S. EWER *Dresden*  
*A man of polite learning and liberal education.*

VIOLA MEYER *Hays*  
*I hope, for hope hath happy place for me.*

FRANK SHEARER *Wilmore*  
*He possessed a peculiar talent of producing effect in whatever he said or did.*

EMMA BIGGE *Stockton*  
*I am not of that feather, to shake off my friend when he most needs me.*

HOPE EUTSLER *Lincoln*  
*If she has a motto it must be "pep."*

PAUL BRENNER *McCracken*  
*But love is blind, and lovers cannot see  
The pretty follies that themselves commit.*

EVA ABERCROMBIE *Hays*  
*Let's go hand in hand, not one before the other.*

GEORGE JEPSON *Hays*  
*If she under-value me,  
What care I how fair she be.*

JOHN FORKER *Haven*  
*A noticeable man, with large brown eyes.*

RUTH ROUNER *Luray*  
*Straightforward, fearless and frank, she wins where others fail.*

ROBERT DECKER *Sylvan Grove*  
*Great men only should have great faults.*

VIOLET ROUNER *Luray*  
*A nature so modest and rare that you hardly at first see the strength that is there.*





AUSTIN WATSON

Lebanon

*That which ordinary men are fit for I am qualified in, and the best of me is diligence.*

MARY RONGISH

Wellsville

*A sudden thought strikes me; let us swear an eternal friendship.*

LYDIA KRUG

Luray

*Not only takes the part of a doll, but is one.*

MRS. ELGIE FIREOVID

Jewell

*High erected thoughts sealed in the heart of courtesy.*

MRS. MARION MARLAR

Lucas

*For the highest she did still aspire.*

RUTH SCHWARZ

Solomon

*The crowning glory of a woman is her hair.*

GOLDIE PROFFITT

Alden

*No more dates for a week—why wasn't I good?*

IOLEANE WILLIAMS

Hays

*I am especially fond of "Slim" men.*

LOLA HILL

Stockton

*Ever fair and quiet—a thing supreme.*

JESSIE KIRKWOOD

Larned

*Its at home, I only wear it once in a while.*

DONALD STRAWN

Beloit

*His highest ambition is to be a devil with the wimmin.*

GLADYS BLENDER

Hays

*And though that she was worthy, she was wise.*





MRS. ANNA CLARK

Hays

*Her duties lie in many directions; but she takes care of them all.*

EMMETT SMITH

Excelsior Springs, Mo.

*His only fault is that he has no fault.*

MARGARET MUELLER

Sylvan Grove

*There is nothing either good or bad, but thinking makes it so.*

CHRISTINE BALSMEIER

Ellinwood

*For highest standards she ever stood, her aim in life is doing good.*

EVA HODSON

Lucas

*Nature forms us for ourselves, not for others, to be, not to seem.*

IVA McCALL

Brewster

*Those about her, from her shall read the perfect ways of honour.*

EFFIE ASHWORTH

Quinter

*Much done, and much designed, and more desired.*

MARGARET LOVITT

McCracken

*Come let us sit and watch the sky, and fancy clouds, where no clouds be.*

FLORENCE GILMORE

Osborne

*Lack of breath was the only impediment to her conversation.*

FLOSSIE MANGES

Sterling

*What shall I do to be forever known, and make the age to come my own?*

ELSIE PETERS

Downs

*Always a smile.*

CELIA MUIR

Stockton

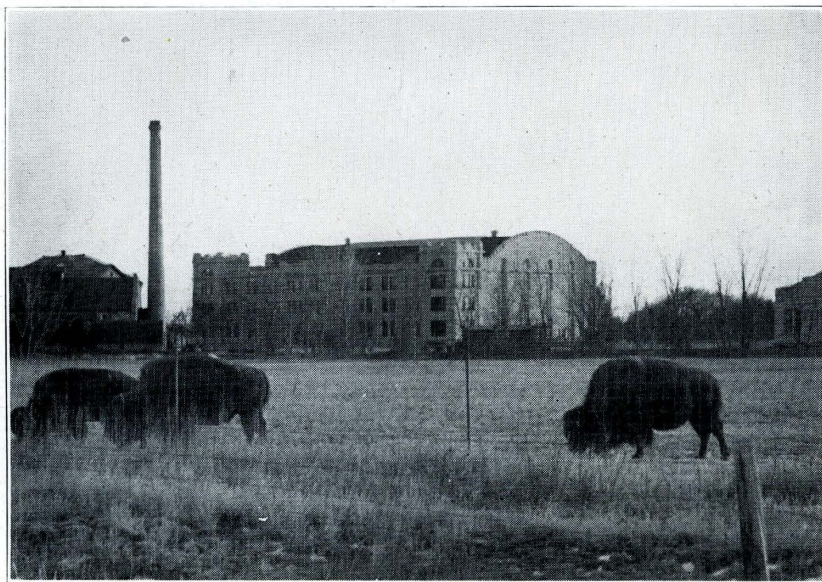
*I am not merry, but I do beguile the thing I am, by seeming otherwise.*

PAUL MORRIS

Almena

*Being good is an awful lonesome job.*

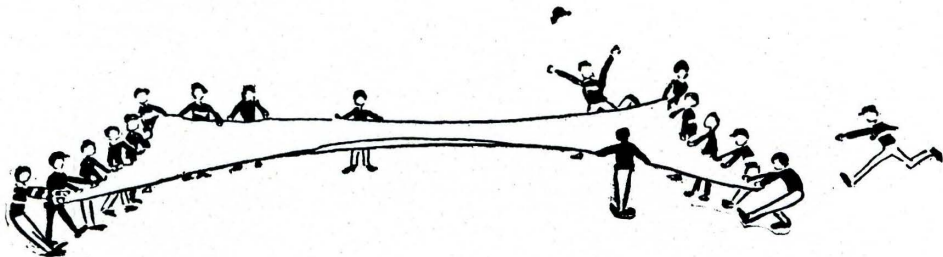




*Buffalo "Herd" on K. S. T. C. Campus, Hays*



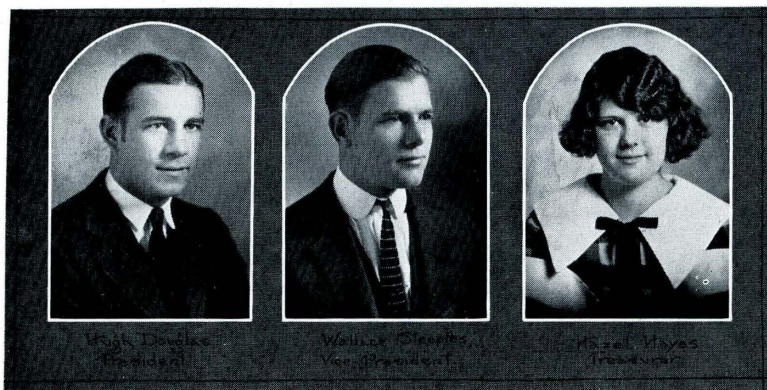
# FRESHMAN



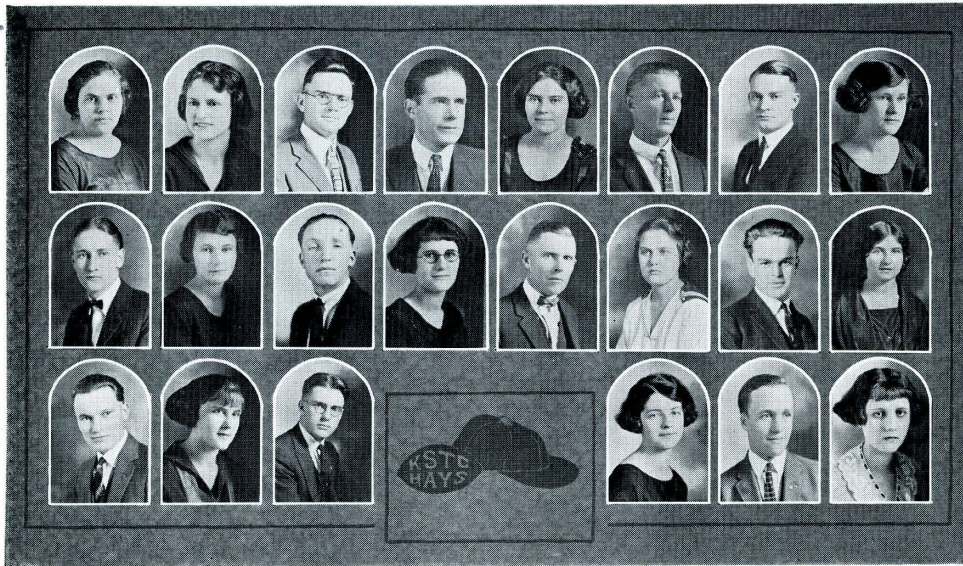


## *Freshman Officers*

HUGH DOUGLAS	President
WALLACE STEEPLES	Vice-President
HAZEL HAYES	Treasurer
RUBY DESBROW	Secretary







RUTH RUFF  
FRANCES OHEIM  
G. W. MANNERS  
JIMMIE SHEA  
MARY TEAGUE  
WILLIAM FISHER  
MILLARD CRISSMAN  
MAY REED  
RAYMOND DECKER  
AGNES PETERSON  
GLENN VERNON  
FLORA RAU  
GEORGE NICHOLSON  
LYNDAL CHRISTIANSEN  
PHILIP NETHERLAND  
MARY SCHOEMAKER  
ARTHUR KELLER  
AGNES BOLLINGER  
JOHN SHIVLEY  
FRANCES HURLOCK  
LEO KOBLE  
HELEN ZERZAN

*Lewis*  
*Kinsley*  
*Lucas*  
*Selden*  
*Collyer*  
*Garfield*  
*Quinter*  
*Copeland*  
*Sylvan Grove*  
*Assaria*  
*Simpson*  
*Bison*  
*Salina*  
*Hays*  
*Hays*  
*Victoria*  
*Garfield*  
*Utica*  
*Hays*  
*Lincoln*  
*Penokee*  
*Hollyrood*





GEORGE MATHEWS	<i>Tribune</i>
HOMER GROUT	<i>Hays</i>
WALLACE STEEPLES	<i>Zurich</i>
ANNABELLE CLARK	<i>Hays</i>
LOUISE GOSSER	<i>Gorham</i>
TINA MCFADDEN	<i>Morland</i>
CLAUDE SCHEUERMAN	<i>Otis</i>
PAUL J. SELBY	<i>Kipp</i>
LOIS HOGEBLOOM	<i>Goodland</i>
GRACE FICK	<i>Scott City</i>
ARCHEL GANOUNG	<i>Plainville</i>
EDWIN PETERSON	<i>Marquette</i>
CORA BLACKWILL	<i>Quinter</i>
LOLA BRUNT	<i>Lincoln</i>
CASPAR BURGARDT	<i>Hays</i>
RUSSELL ANDERSON	<i>Oberlin</i>
JOSEPHINE PARKER	<i>Hays</i>
HOBART RADER	<i>Plainville</i>
THEDA GOODSSELL	<i>Quinter</i>
GEORGE PEARCE	<i>Downs</i>
BEULAH DAVIES	<i>Littleton, Colo.</i>
MARTIN ZABOLITZKY	<i>Colorado Springs, Colo.</i>





HUGH DOUGLAS	<i>Oberlin</i>
LYDIA TRIMMER	<i>Gove</i>
LUCILLE WRIGHT	<i>Lenora</i>
MAYBELLE BILLINGS	<i>WaKeeney</i>
LAVINNIE ROSE	<i>Lucas</i>
GLADYS ROYSE	<i>Langdon</i>
BERTHA MARQUAND	<i>Ogallah</i>
WALTER McFERRIN	<i>Oberlin</i>
ETHEL FRENCH	<i>Geneseo</i>
MILDRED BAKER	<i>Hays</i>
MARTIN LADNER	<i>Centralia</i>
MARY FOGLE	<i>Hays</i>
IRENE SAWHILL	<i>Dorrance</i>
FRANCIS RHINE	<i>Gove</i>
MAE THOMPSON	<i>Hays</i>
FRANCES LUTHER	<i>Great Bend</i>
I. D. CONROY	<i>Manhattan</i>
AVIS COOLEY	<i>Logan</i>
JAMES BURCHETT	<i>Oberlin</i>
HAROLD GILMORE	<i>Bloomington</i>
HELEN SULLIVAN	<i>Logan</i>
CLEMFORD KULP	<i>WaKeeney</i>





MAUDE MAE GRIMSLEY	<i>Garden City</i>
ALMA PIATT	<i>Hays</i>
DAPHNE NELSON	<i>Gove</i>
ESTELLA RIFFEL	<i>Stockton</i>
LAURA PAPE	<i>Topeka</i>
BERNICE LEE	<i>Hays</i>
ONA DILLMAN	<i>Hutchinson</i>
ETHEL COOLING	<i>Healy</i>
VERNAL CARLSON	<i>Marquette</i>
BERNICE KELLEY	<i>Quinter</i>
L. MCCLUNG SNODGRASS	<i>Hays</i>
MARY GROVE	<i>Dorrance</i>
PHOEBE HALL	<i>Great Barrington, Mass.</i>
WILMA DEAN	<i>Delphos</i>
ELSIE ZEMAN	<i>WaKeeney</i>
CHARLES SMALL	<i>Webber</i>
OLGA KELLEY	<i>Quinter</i>
CARL MALMBERG	<i>Hays</i>
MARY BELL	<i>Penokee</i>
EVA BOXBERGER	<i>Russell</i>
ROBERT THOMPSON	<i>Hunter</i>
MARY RUSSELL	<i>Jewell</i>





IRA MCKAY	<i>Oberlin</i>
MILDRED NIBERT	<i>Hays</i>
GRACE SPENCER	<i>Hays</i>
LOIS NORTHUP	<i>Quinter</i>
HELEN WILSON	<i>Garfield</i>
FRANK WEISNER	<i>Hays</i>
FANNIE SHAVER	<i>Bunkerhill</i>
GRETA BLUME	<i>Garfield</i>
VELMA BOYLE	<i>Hoisington</i>
MAGGIE LEE HALL	<i>Kinsley</i>
IRVIN MCVEY	<i>Lucas</i>
NETTIE THOMPSON	<i>Hunter</i>
NELLIE THOMPSON	<i>Hunter</i>
CORA WELLS	<i>Lamont, Okla.</i>
ADDIE AIKEN	<i>Hays</i>
OSCAR SNYDER	<i>Hays</i>
GRACE GREGORY	<i>Deirzes</i>
HUGH FARQUHARSON	<i>Lincoln</i>
BEULAH WIENEKE	<i>Plainville</i>
CARL WESLEY BAKER	<i>Larned</i>
LEONA JANTZEN	<i>Hays</i>
FRED FAIR	<i>Oberlin</i>





RAYMOND DECKER	<i>Sylvan Grove</i>
RACHEL SIMPSON	<i>Langdon</i>
CHARLOTTE BLENDER	<i>Hays</i>
ONA MAE MINNICK	<i>Rexford</i>
MAE SMITH	<i>Hays</i>
CATHERINE LEWIS	<i>Hays</i>
EUNICE GERALD	<i>Atwood</i>
KATHRYN ZINK	<i>Stockton</i>
BLANCHE PFEIFFER	<i>Wilson</i>
MARY MILLER	<i>Lorraine</i>
ERVA OMART	<i>Hays</i>
AMELIA BATLINER	<i>Colby</i>
LLOYD PARKHURST	<i>Hays</i>
OLLIE PIERCE	<i>Osborne</i>
RUTH FICK	<i>Scott City</i>
GUSSIE JOHNSON	<i>Kackley</i>
ROSE PURMA	<i>Ellsworth</i>
ROSINA ALLBERT	<i>Hays</i>
ELLWOOD MACKENZIE	<i>Oberlin</i>
THULA SHARPE	<i>Great Bend</i>
THELMA BARNETT	<i>Rexford</i>
JIMMIE SHEA	<i>Selden</i>





LUCILLE REIGEL  
HAZEL HAYES  
JAMES LOVITT  
KATHLEEN STORREY  
MILDRED MESSICK  
ELIZABETH LAWSON  
MABEL FEASTER  
LOLA LUTHER  
HELEN HOOPMAN

*Hays  
LaCrosse  
McCracken  
Ellsworth  
Healy  
Stockton  
Hays  
Great Bend  
Bunkerhill*





*Freshman Hoboes*

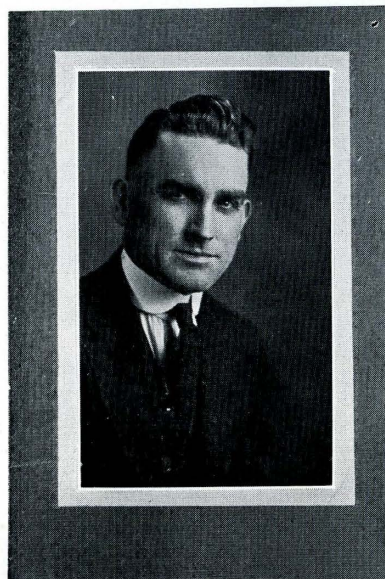








FRANK MANDEVILLE  
*Director of Athletics*



WM. D. WEIDLEIN  
*Head Football Coach*

## *The Coaches*

THE Weidlein-Mandeville spirit and Tiger Spirit are emblematical of each other symbolizing victory or defeat with honor and remembering always that clean sportsmanship is the nucleus around which Tiger Athletics are built. Instilled in the student body by tradition this institution has been cherished, honored and kept untarnished until this spirit of fair play has placed the Old Gold and Black in the top rank of Kansas schools.

As the Tiger Spirit is characteristic of K. S. T. C. so are our coaches characteristic of the Tiger Spirit, tolerating neither foul play or unsportsmanlike tactics, encouraging the defenders of the Old Gold and Black to fight hard for the love of school and of game. But whether it has been in victory or defeat we are proud of the men who are teaching us to "play the game" and carry on.

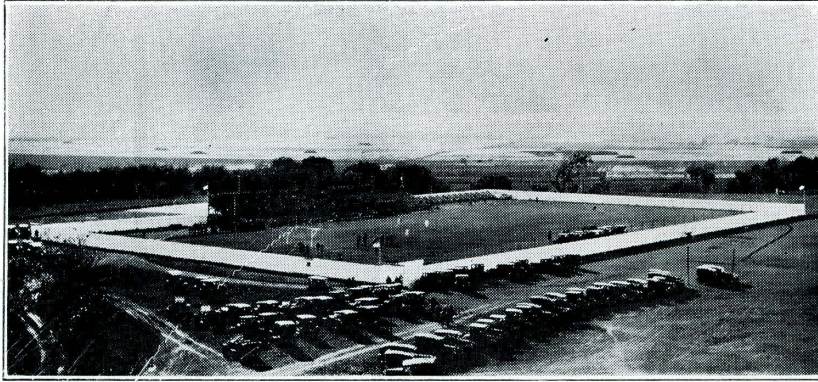


## *K. Club*



RILEY, CONGER, E. LORBEER, COWAN, SHADE, RARDIN, ORDWAY  
L. GROSS, LEWIS, BYRD, REED, HINKHOUSE, A. LORBEER, J. GROSS  
NELSON, ENGSTROM, FISHER, RHOADES, DOUGLAS, McVEY, McKENZIE





## *Lewis Field*

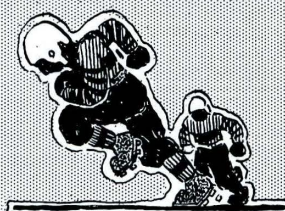
It was through the personal effort of President Lewis that we have Lewis Field as it is today.

The grandstand will seat 1,500 people, and is only partially completed. In a short time cement will be placed on the grandstand and we will have a stadium to be very proud of. The grandstand and the board fence around the field were built by volunteer work of the boys. The girls then donned overalls and other regalia and painted the fence.

The arena is of natural sod and is said to be one of the best in the conference.



HIT 'EM  
HARD!

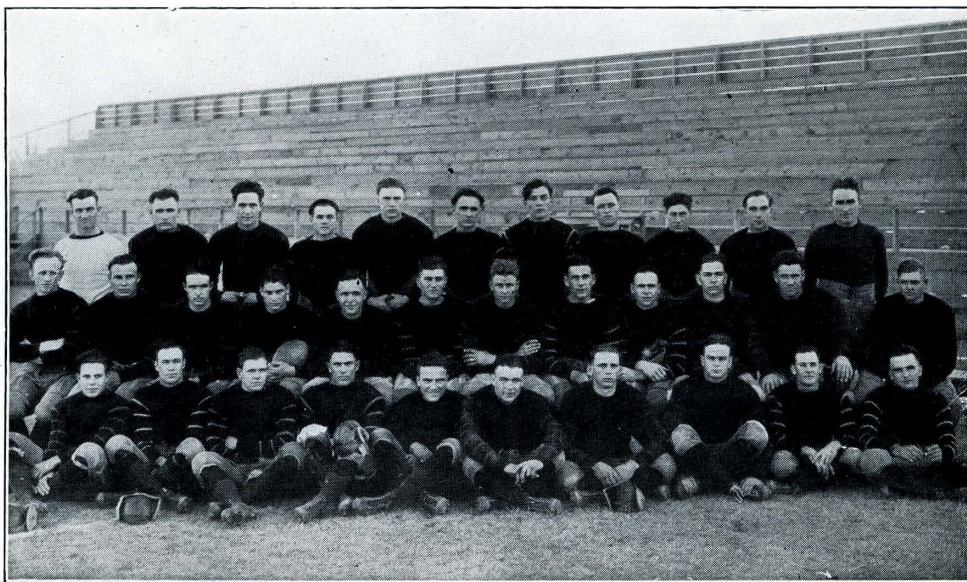




## *Football Schedule*

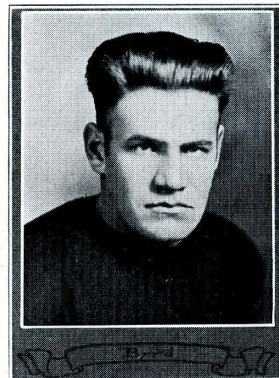
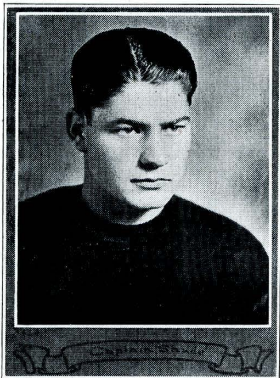
Sept. 27—St. John's College at Hays.  
Oct. 5—Emporia Teachers at Emporia.  
Oct. 12—McPherson College at Hays.  
Oct. 19—Kansas Wesleyan at Salina.  
Oct. 27—St. Mary's at Hays.  
Nov. 2—Bethany at Hays.  
Nov. 16—College of Emporia at Hays.  
Nov. 22—Fairmount at Wichita.  
Nov. 29—Sterling at Hays.

## *Football Squad*



*Top row*—MANDEVILLE (assistant coach), CONANT, RHODES, SCHUERMAN, ANDERSON FORKER, LOVITT, KELLER, BURCHETT, FARQUHARSON, WEIDLEIN (head coach)  
*Middle row*—ENGSTROM, FISHER, CONGER, SHADE (captain), COWAN, NELSON, LEWIS, DOUGLAS, McFERRIN, DUMM, BYRD (captain-elect), MATTHEWS  
*Bottom row*—OSBORNE, RARDIN, STEEPLES, McVEY, MCKENZIE, REED, LORBEER, NETHERLANDS OPDYCKE, DUMLAR



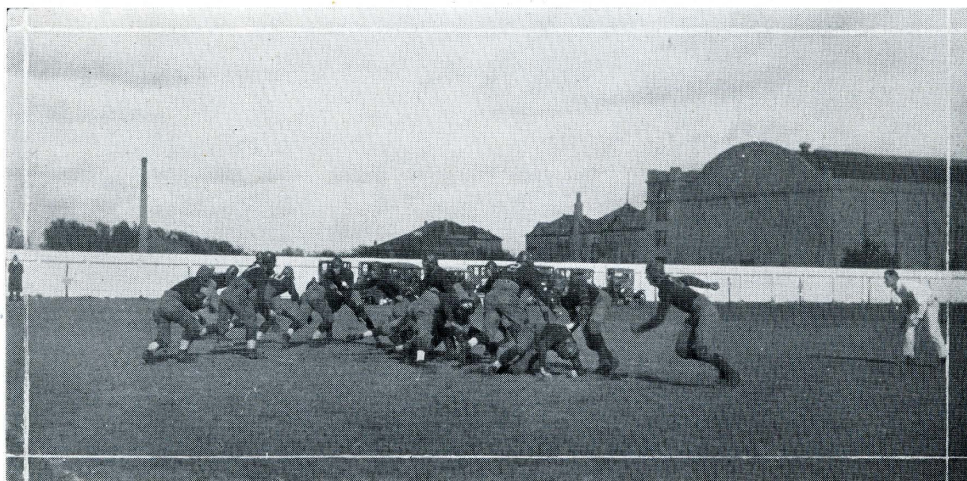


## *Hays 49, St. John's 6*

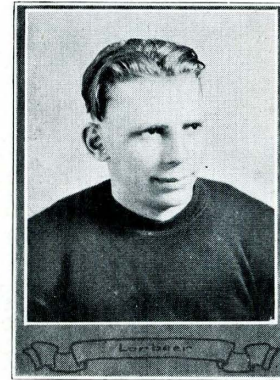
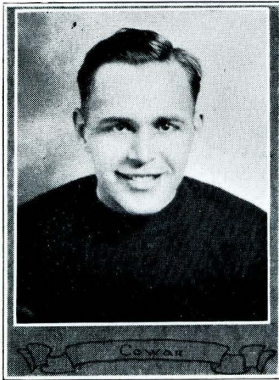
The Tigers opened the 1923 gridiron season September 27, on Lewis Field, with an easy victory over St. John's College of Winfield.

St. John was represented with a fighting aggregation, but it was no match for the Tiger. The Tigers scored three touchdowns in the first quarter, two in the second and one in each of the last two quarters. St. John's only score came in the last quarter when Lewis Dau picked up a fumble and ran forty-five yards to a touchdown.

Although the score was large, the game pointed out many weak spots, especially in the Tiger offense.

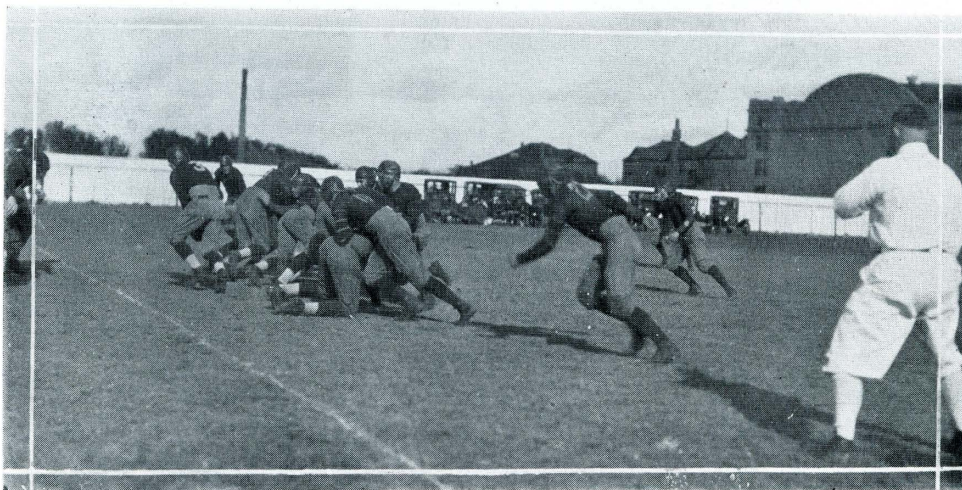




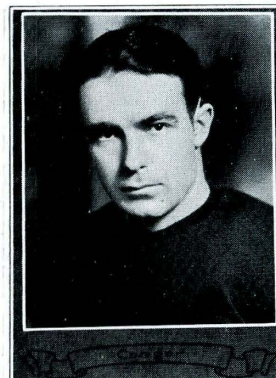
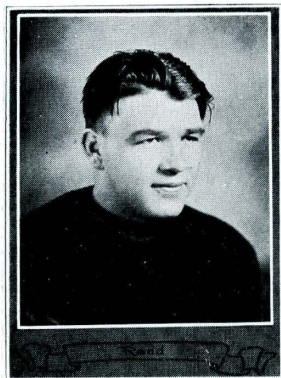


## *Hays 3, Emporia 26*

On October 5 the Tigers battled the Emporia Teachers at Emporia. This was the first Conference game for the Hays team. Emporia, favored by the breaks of the game, was able to pile up one of the largest scores ever made by a Kansas Conference team against a Hays team. The only score made in the third quarter was made by Shade when he scored via the drop-kick route from the thirty-five yard line.



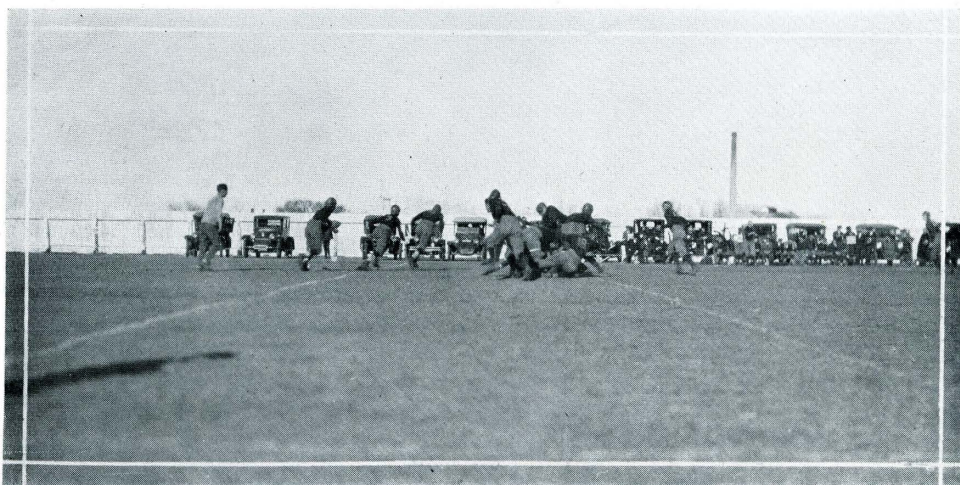




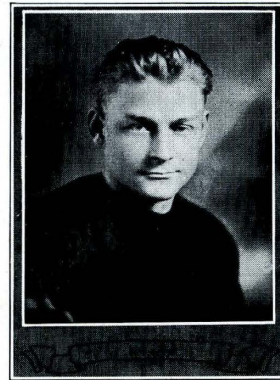
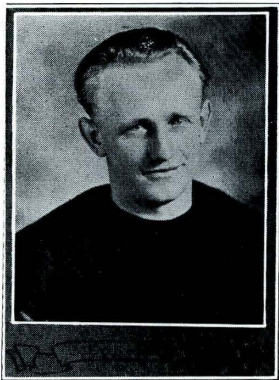
## *Hays 0, McPherson 7*

In a pouring rain, the McPherson Bulldogs scored a touchdown against the Tigers on the home field, October 12.

Immediately following the kick-off McPherson blocked two attempted punts by Hays, recovered the ball on the second one and made a short end run for the only score made during the entire game.

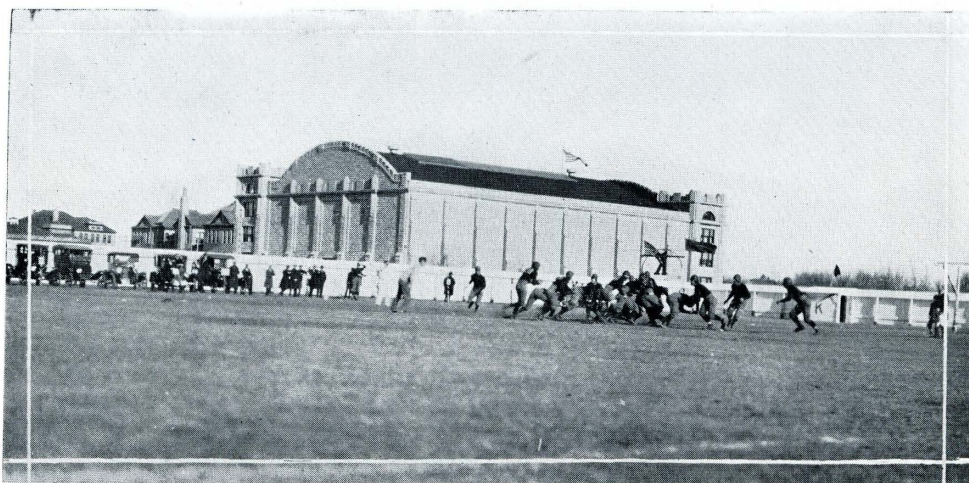




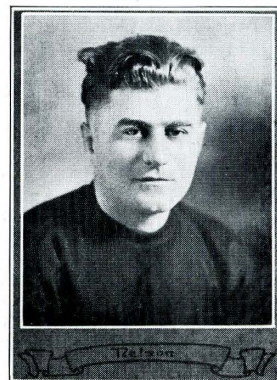
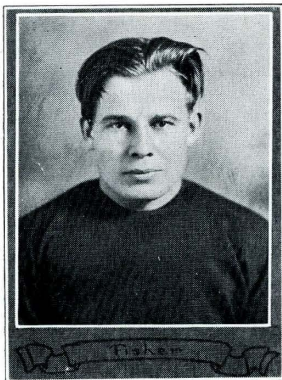


### *Hays 3, Salina 3*

Not discouraged by the loss of the first two Conference games, the Tigers went to Salina on October 19, where they fought the Coyotes to a standstill. Salina scored a drop-kick in the second quarter and Hays made one in the fourth quarter. Hays made 11 first downs, Salina 4. The ball was kept in Wesleyan territory most of the time. The Tigers were kept from scoring a touchdown by the great number of penalties called on them.







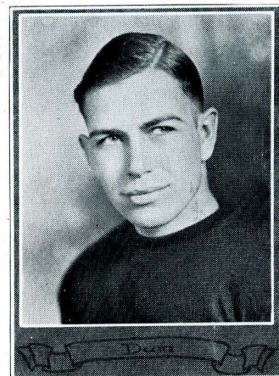
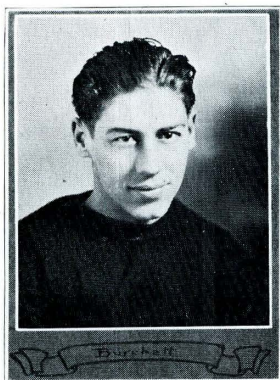
## *Hays 7, St. Mary's 6*

With two losses and one tie, the Tigers were determined that the Saints should leave Hays with another defeat marked up against them.

St. Mary's scored on a blocked punt in the third quarter. The try for point failed. The Hays score came in after Conger ran thirty-five yards through a broken field to the Saints' thirty-yard line. By successive line plunges the ball was carried over.







## *Hays 12, College of Emporia 10*

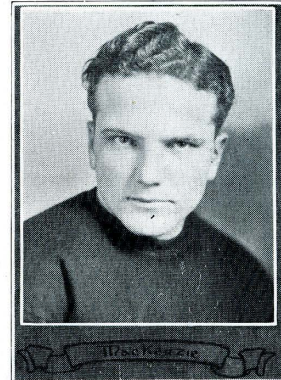
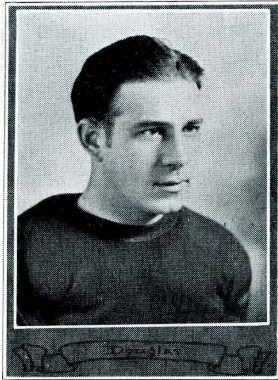
A crowd of 1,200 persons saw the Tigers defeat the College of Emporia 12 to 10 on Homecoming Day. The Tigers outplayed the College throughout the first quarter. Shade scored two field goals during the first quarter.

The game was a see-saw affair, the Tigers suffering repeatedly from disastrous penalties, and only the stonewall defense presented saved the Tigers five times on the one-yard line.

The Hays touchdown came late in the last quarter when the ball was advanced on straight football from the thirty-eight yard line.

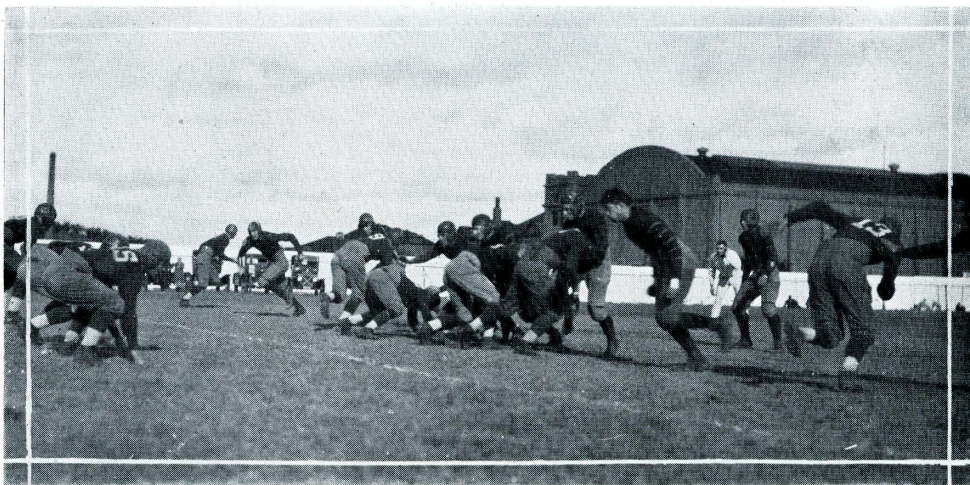




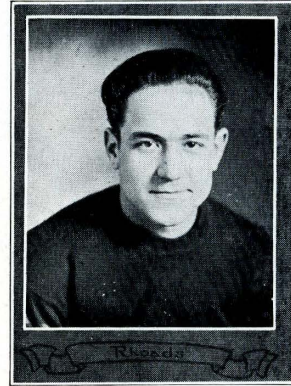


## *Hays 20, Bethany 0*

On November 2 the Tigers upset the dope as to the expected "close contest" with the Swedes. The men from Lindsborg put up a game fight, but were not able to make much headway against the Weidlein men. Hays scored in the second, third and fourth quarters.

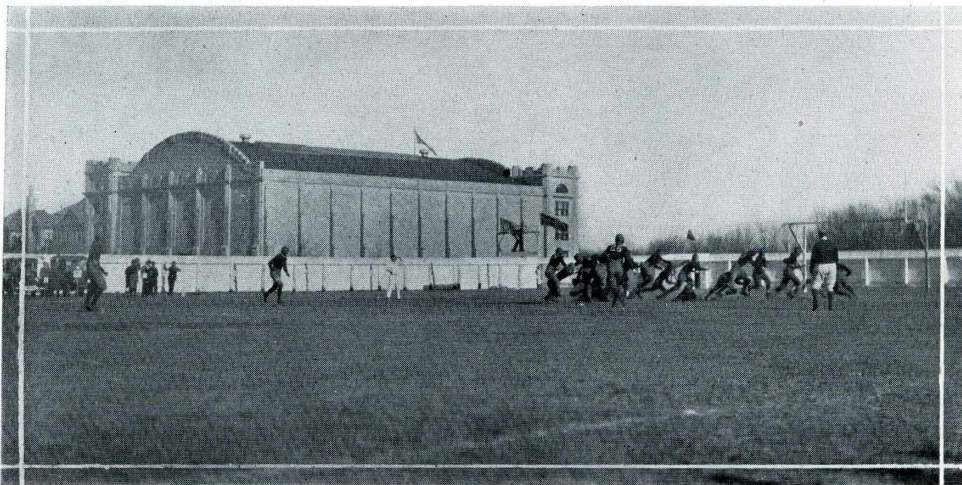




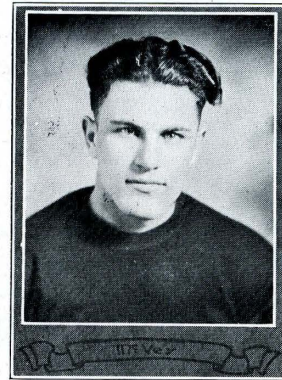
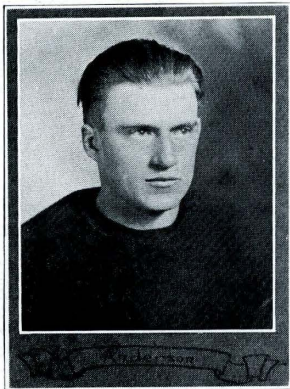


## *Hays 0, Fairmount 20*

The Tigers, flushed with their victories over C. of E., Bethany, and St. Mary's, went to Wichita confident of an easy victory over Fairmount on November 22. They received a severe jolt when Fairmount won its first game of the season. They were unable to break up the passing game presented by the Wichita team.

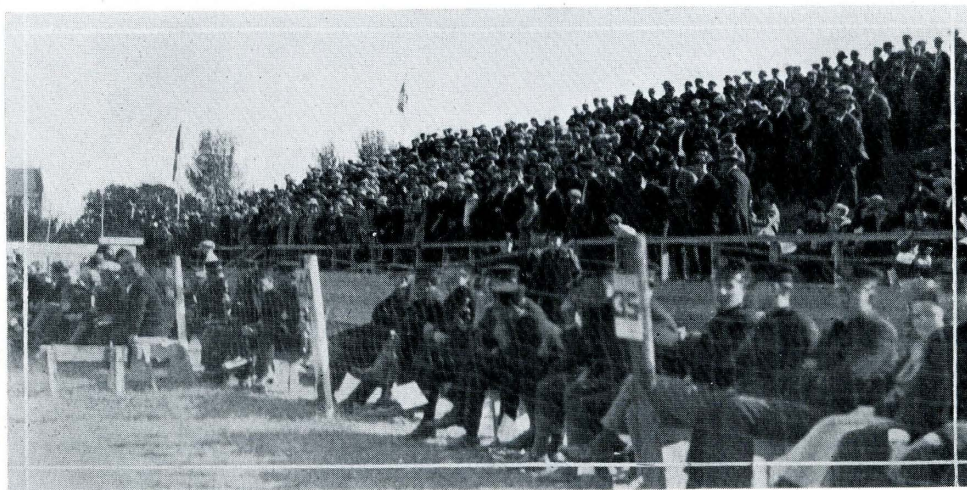




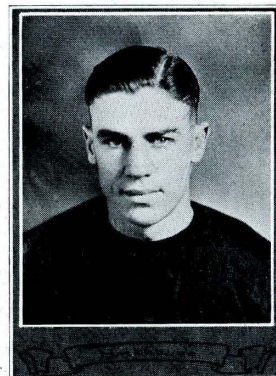
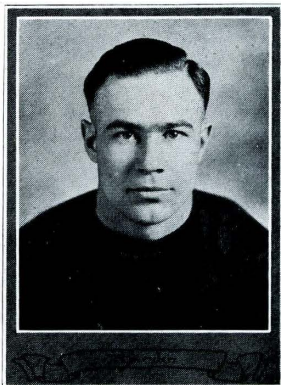


## *Hays 0, Sterling 0*

On Thanksgiving day the Sterling squad, leaders of the Conference, came to Hays determined to win. The Tigers were determined that the Barrel Makers should not win. The teams were quite evenly matched. The strong Sterling line was held by the fighting Hays eleven. When the game ended Hays was still in possession of the ball after carrying it fifty yards down the field on successive line bucks.



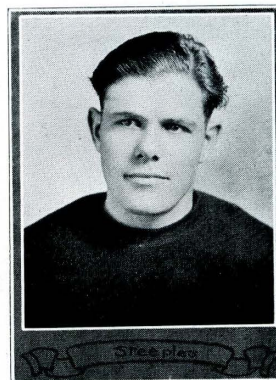
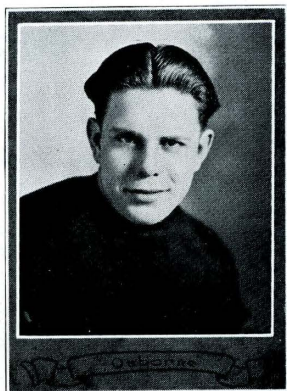




The season was satisfying in more ways than one. From the opening game on the Hays team showed one thing consistently, and that was the characteristic Tiger FIGHT which had been handed down and instilled in the minds of all grid men from Hays that they are never beaten until the last whistle sounds and then not whipped. Tigers are never so dangerous as when behind in the fourth quarter, and this is recognized throughout the Conference.



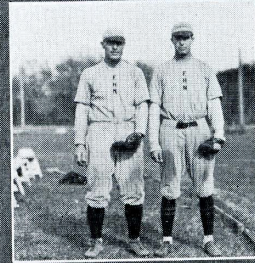




The Weidlein-Mandeville combination will make tough sledging for everyone in the conference next year. Only five men will be lost to the 1924 squad and men of experience are ready to fill their shoes. Inexperience was the chief handicap during last fall, as only four letter men started the season in permanent berths. With the new material thoroughly schooled in the Weidlein system, watch the Tiger percentage column.

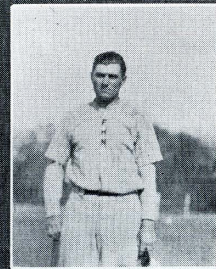
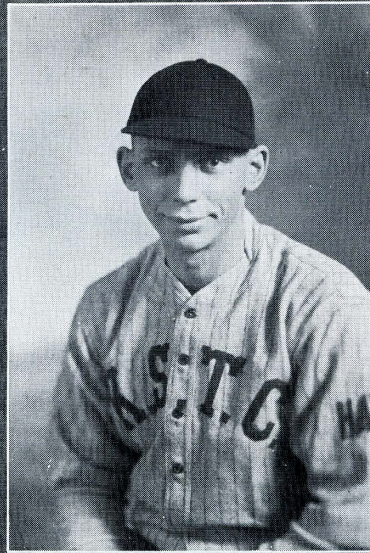






Base

ball '23





# SHOOT!





## *Basketball Schedule*

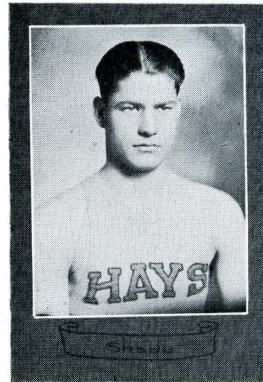
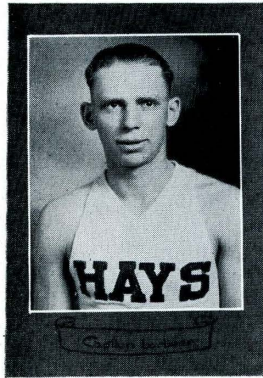
Jan. 11-12—St. Mary's at Hays.  
Jan. 19—Salina Wesleyan at Salina.  
Jan. 25-26—Bethany at Hays.  
Jan. 30—Baker at Baldwin.  
Jan. 31—Washburn at Topeka.  
Feb. 1—St. Mary's at St. Mary's.  
Feb. 8-9—Pittsburg Teachers at Hays.  
Feb. 15—Salina Wesleyan at Hays.  
Feb. 22—Baker at Hays.

## *Basketball Squad*

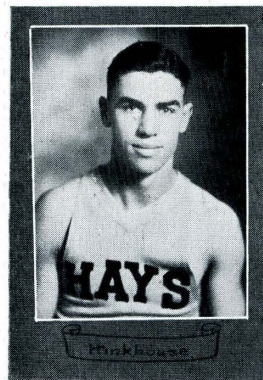
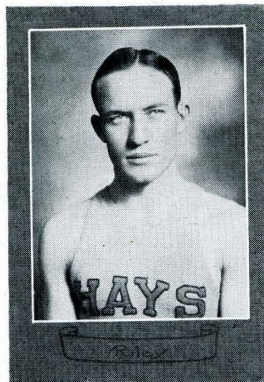


*Top row*—OPDYCKE, McFERRIN, MANDEVILLE (coach), A. LORBEER, WILSON  
*Bottom row*—RILEY, SHADE, E. LORBEER (captain), HINKHOUSE, WHEAT

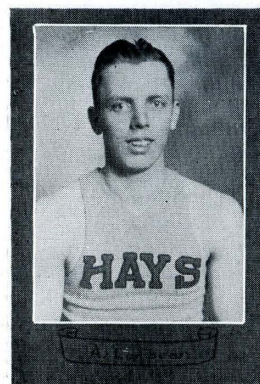
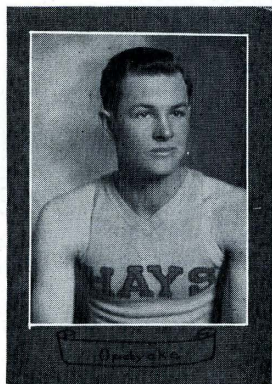




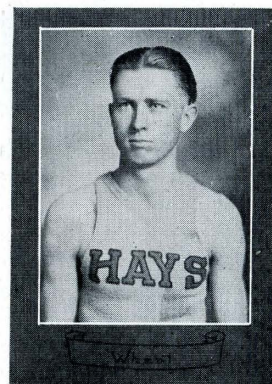
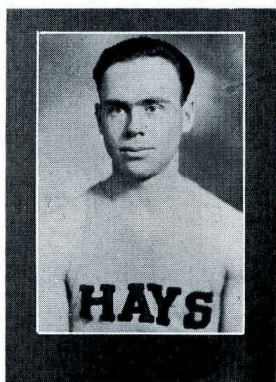
The 1924 basketball squad faced the season with a new coach and practically a new system to learn. Under Coach Mandeville the squad showed a decided improvement over last year, especially in scoring, which was improved on an average of 7 points per game. Although the team was somewhat erratic and inconsistent at times, it was one which we may well be proud of and one which brought honor in defeat as well as in victory, and it may never be said that the Tiger spirit was better exemplified than in the 1924 basketball squad.





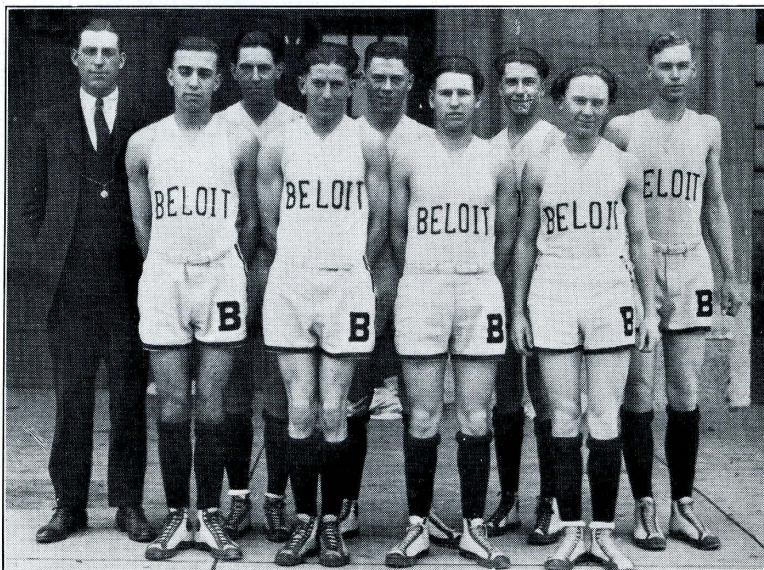


Dutch Lorbeer, besides being Captain of this year's squad, was high-point man for the season, with a total of 103 points. Dutch was somewhat handicapped throughout the season with injuries and a severe cold. Hinkhouse, Captain-elect, played an excellent game at forward and is a true leader who will be present next year, and with Wheat, his running mate, returning, next year's prospects are bright for a scoring machine of unusual ability. Riley and Shade, guards, were recognized and feared all over the conference. A. Lorbeer and McFerrin were utility men of no mean ability, and next year, with their added experience, will prove valuable assets to the Tiger squad.





## *High School Basketball Tournament*



*Beloit Boys—Winners in Class "A" Tournament*

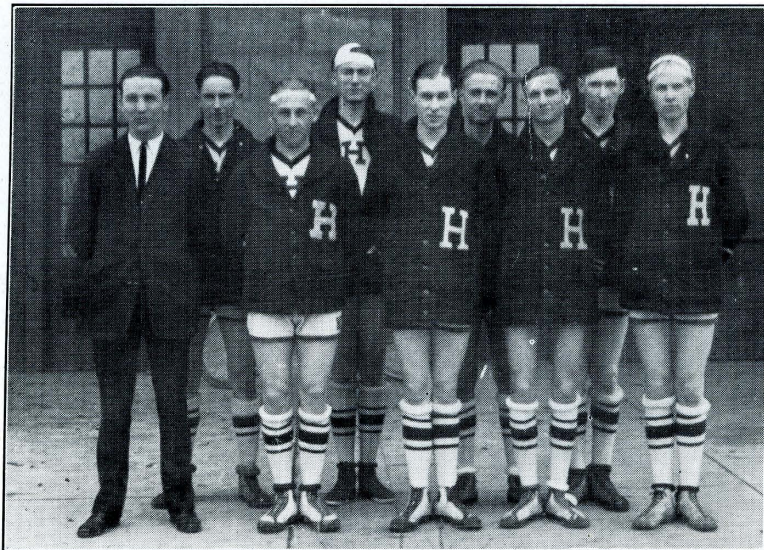


*Beloit Girls—Winners of Girls' Tournament*





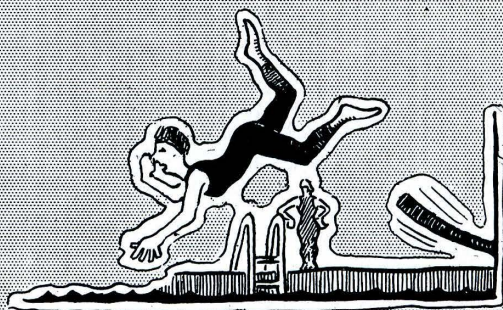
*Russell Boys—Winners in Class "B" Tournament*



*Holyrood Boys—Winners in Class "C" Tournament*



# WOMEN'S ATHLETICS -







MARTHA HILL  
*Director of Physical Education for Women*

## *Women's Athletics*

Miss Martha Hill, Director of Physical Education for Women, received her training at the Kellogg School of Physical Education, Columbia University, and the Vestoff-Serova Russian School of Dancing.

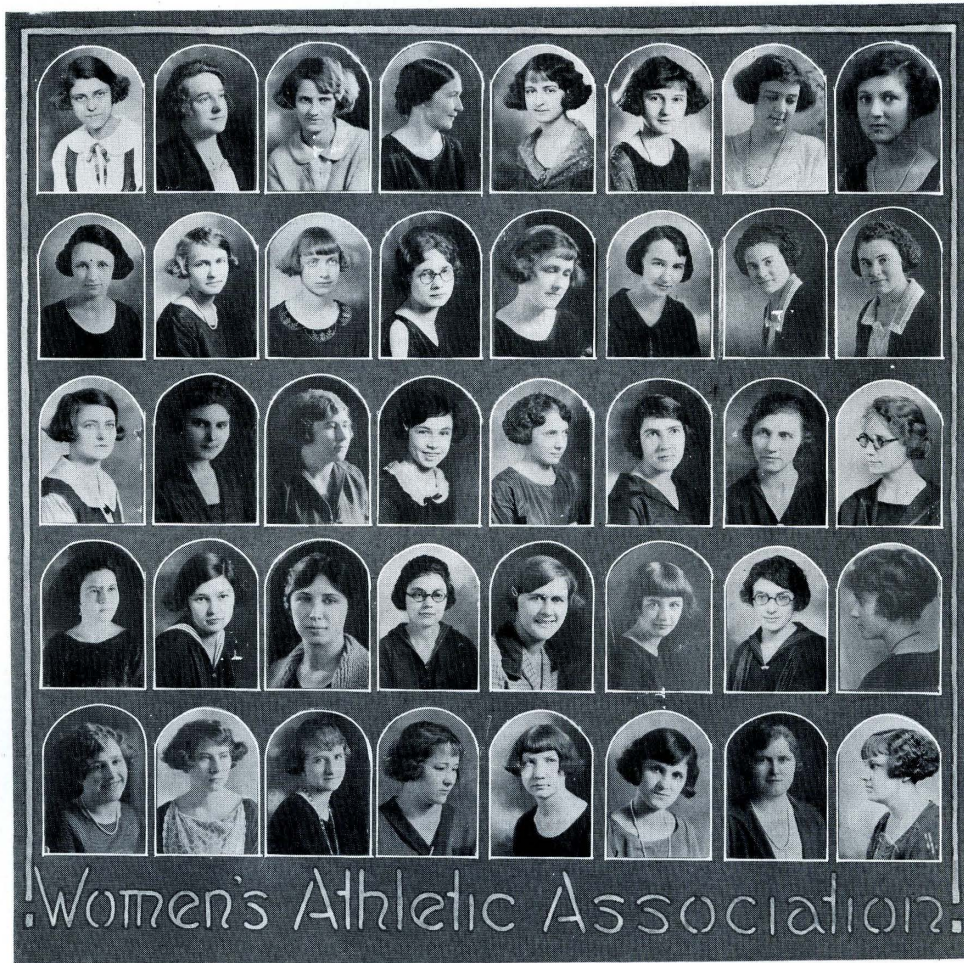
Miss Hill took charge of the department this year, but in this short time has won the love and admiration of every girl on the campus.



*"K" Girls*

COSTNER, BEEBY, FULTS, SIMS, J. MYLES, I. MYLES, FERGUSON, MILLER, JAMESON, CHITTENDEN





FULTS, BEEBY, COSTNER, CHITTENDEN, FERGUSON, SIMS, KEEFER, JAMESON  
LOVITT, BROOKS, HEDGES, MINNIX, GORDANIER, S. CHITTENDEN, I. MYLES, J. MYLES  
LOGAN, BROWN, G. FICK, McELHANEY, GILMORE, WING, MILLER, NELSON  
SCHWARTZ, M. MILLER, McMICHAEL, BARRY, BROWN, PROFITT, HERNDON, LARSEN  
DAVIES, CASSIDY, MARQUAND, RICHARDSON, PATTON, VEVERKA, DAVIS, BLENDER



## *Freshman Champions*



DILMAN, MINNICK, STORREY, DESBROW, RICHARDSON, HURLOCK  
DAYLOR, BOXBERGER, COOLEY, SHAVER, MCFADDEN, BLENDER  
DAVIES, HAYES, SPENCER

## *Sophomore Team*



LOVITT, KEEFER, GILMORE, F. O'CONNOR, A. O'CONNOR  
VERERKA, BEARDSLEY, MILLER, BROWN  
CASSIDY



## *Junior Team*



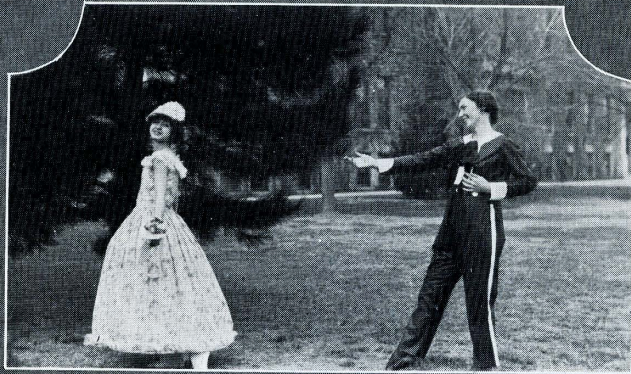
COSTNER, HEDGES, J. MYLES, MCJIMSEY, DAVIS, LOGAN, WING, BEEBY, MILLER

## *Senior Team*

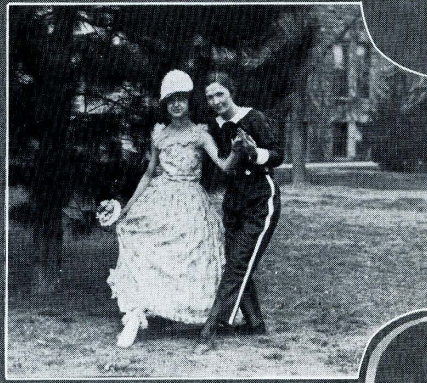


GROFF, MORRIS, WAGNER, CHITTENDEN, SIMS, FERGUSON, MINNIX





# Dancing

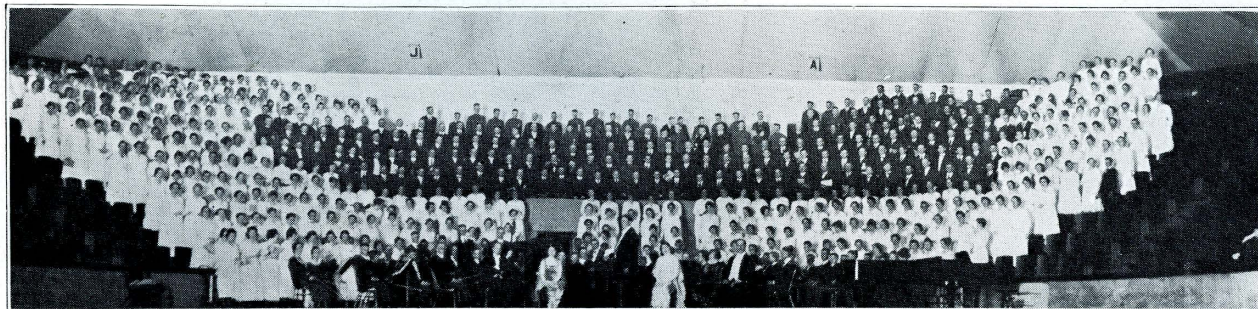






Dancing





## *Festival Chorus*

*531 Voices*

THE ELIJAH  
With  
Oratorio Quartet  
Sunday, May 4  
8:00 P. M.

HENRY EDWARD MALLOY, *Conductor*

ORATORIO QUARTET

Arthur Kraft, Enid Watkins,  
Mabel Beddoe, Bernard Ferguson

*Orchestra 50 Pieces*

THE MESSIAH  
With  
Oratorio Quartet  
Sunday May 11,  
8:00 P. M.



# *The Music Festival*

## *Calendar of the Week*

### SUNDAY, MAY 4

- No. 1. 3:00 P. M. Recital—Ernest Davis, Tenor, Boston Grand Opera Company.  
No. 2. 8:00 P. M. "Elijah"—Festival Chorus, Oratorio Quartet and Orchestra.

### MONDAY, MAY 5

- No. 3. 3:00 P. M. Concert—Kansas State Teachers' College Glee Club.  
No. 4. 8:00 P. M. Aesthetic Dance Program.

### TUESDAY MAY 6

- No. 5. 3:00 P. M. Concert—Piano and Violin Students.  
No. 6. 8:00 P. M. Recital—Enid Watkins, Soprano of N. Y.

### WEDNESDAY, MAY 7

- No. 7. 3:00 P. M. Concert—Kansas State Teachers' College Sextet.  
No. 8. 8:00 P. M. Recital—Bernard Ferguson, Baritone, New York.

### THURSDAY, MAY 8

- No. 9. 3:00 P. M. Concert—Hays Concert Band.  
No. 10. 8:00 P. M. Reading—Mary O. Wooster.

### FRIDAY, MAY 9

- No. 11. 9:00 A. M. 1:30 P. M. Western Kansas High School Music Contest, Solo Events.  
No. 12. 8:00 P. M. Recital—Mabel Beddoe, Contralto of N. Y.

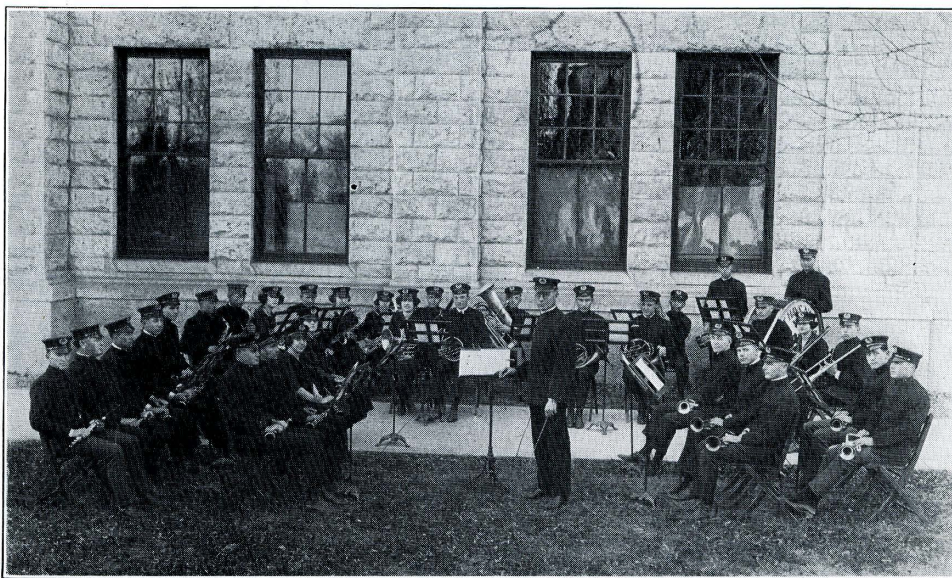
### SATURDAY, MAY 10

- No. 13. 9:00 A. M. 1:30 P. M.—Western Kansas High School Music Contest—Ensemble Events.  
No. 14. 8:00 P. M. Recital—Arthur Kraft, Tenor of New York.

### SUNDAY, MAY 11

- No. 15. 3:00 P. M. Recital—Florence Macbeth, Prima Donna Coloratura Soprano, Chicago Civic Opera Company.  
No. 16. 8:00 P. M. "The Messiah," Festival Chorus, Oratorio Quartet and Orchestra.





## *Kansas State Teachers College Concert Band*

ROLLINS AN-GOVE SEABURY, *Director*

### *Piccolo*

H. E. MALLOY

### *Flute*

MARGARET RARICK

### *Oboe*

EVERETT NIBERT

### *Clarinet*

F. W. ALBERTSON

DOYLE BROOKS

ELDON CURRY

MILDRED LEE

DOROTHY KING

MILDRED NIBERT

DOROTHY MORRISON

PAUL OSHANT

### *Saxophone*

GORDON KIRKMAN

ALFRED HARKNESS

FRANK WEISNER

### *Bassoon*

BERNICE LEE

PAUL WARD

### *Baritone*

GILBERT MEYER

CLAUDE SCHUERMAN

### *Tuba*

CHARLES LEWIS

### *Trumpet*

EARL OYER

BERNARD BRUNGARDT

WALLACE STEEPLES

IRA RHOADES

DONALD STRAWN

### *Cornet*

HARVEY KLEVENO

BENJAMIN RENNER

HOBART RADER

### *Mellophone*

WILLIAM HADDOCK

DONALD HEMPHILL

CHESTER MAXWELL

CLEMFORD KULP

### *Tenor*

MARJORIE LOGAN

### *Trombone*

CARL MALMBERG

JULIUS BROCKEL

PAUL SELBY

EDWIN PETERSON

### *Snare Drum*

MABEL FEASTER

### *Bass Drum*

FRANK THOMAN

### *Tympani*

JOHN SHIVELY



# Kansas State Teachers College Orchestra

H. E. MALLOY, *Director*

## *First Violin*

CLARA MALLOY, Con-  
certmaster  
WILLIAM DREILING  
LOIS RARICK  
EDGAR WINDHOLZ  
ISABELLE FRANK  
GEORGE GOTTSCHALK  
JOHN BISSING  
DAVID POLHAMMER  
ETHEL SHUTTS  
MILDRED KING

## *Viola*

BERNARD BRUNGARDT

## *Bass*

ASA KING

## *Clarinet*

R. A. SEABURY  
C. F. LEBOW  
FRED OSHANT

## *Flute*

MARGARET RARICK

## *Oboe*

CLARENCE HAPGOOD

## *Bassoon*

WALDEMAR GOODHOLM

## *Horn*

REI CHRISTOPHER  
CHESTER MAXWELL

## *Organ*

ANNIE LAURIE GIBSON

## *Second Violin*

LUCILLE FELTON  
CARL MALMBERG  
DONALD HEMPHILL  
MABEL STADTER  
DOROTHY VOSS  
GERTRUDE ROHE  
MARY MANNERS  
HELEN HOCH  
AGNES WASINGER

## *Cello*

ALEX MEIER  
MARGARET SCHAEFER

## *Cornet*

A. W. SENG  
WALLACE STEEPLES  
IRA RHOADES

## *Trombone*

MARJORIE LOGAN  
JULIUS BROCKEL  
GILBERT MEYER

## *Saxophone*

BERNICE LEE

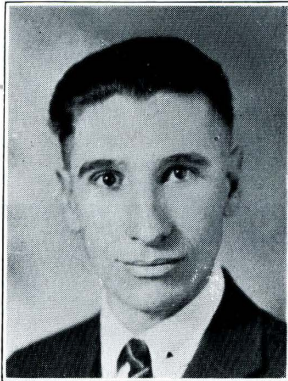
## *Percussion*

JOHN SHIVELY

## *Piano*

MILDRED NIBERT





IVAN TOWNSDIN  
*Editor*



EARL OYER  
*Business Manager*

## *The Leader*

THE Leader is a four-page weekly newspaper, and is the official paper of the student body. The editor is elected annually from the student body by the student voters at an election held on the second Friday in April. The business manager is chosen by the editor.

The Leader is printed on a high grade book paper, which is very convenient for filing purposes. The purpose of the paper is to give all the school news and to reflect the life on the campus in general. Cuts showing campus scenes and happenings are used freely.

The paper is operated strictly on a business basis. It pays its way through advertisements and subscriptions. The subscription price is one dollar per school year and fifty cents per summer term. The advertising rates are the standard local newspaper rates.

Members of the Journalism class and volunteers from among the students make up the reporting staff.—I. C. T.





LETHA BEST  
*Editor*



LAWRENCE GROSS  
*Business Manager*

## *The Reveille*

THE Reveille Staff has done its best to picture in this meager way the bits of life at K. S. T. C. which have impressed us most deeply and which we hope to keep within our memories.

Although it has been a difficult task we have enjoyed it, and we appreciate the help of those who have so courteously assisted us.



















Miss Letka Best













Miss Bessie Tillotson



*Photos by*  
SPERRY AND ALTHOUSE  
*Hays, Kansas*



# ORGANIZATIONS







M. CHITTENDEN, BEST, FERGUSON, MISS AGNEW  
LOVITT, FULTS, WILLIAMS, HUPFER  
SPENCER, BROOKS, HAYES, ELDER, RONGISH, TILLOTSON  
R. ALLBERT, S. CHITTENDEN, KEEFER, SIMS, L. ALLBERT, JAMESON

## *Gamma Sigma*

Organized in 1920

*Colors*—Yellow and White

*Flower*—Jonquil

*In Facultate*

MISS ELIZABETH J. AGNEW





McMICHAEL, BROWN, COSTNER, STORREY, J. MYLES  
GILMORE, JONES  
HILL, McELHANEY, MILLER, I. MYLES

## *Alpha Tau Kappa*

Organized in 1921

*Colors—Pink and White*

*Flower—Sweet Pea*





ROUSEY, HOKE, HEDGES, BEST, McJIMSEY  
CARPENTER, LARSEN  
MILLER, HOUGHTON, MUMERT, WINKLER

## *Tau Upsilon Phi*

Organized in 1922

*Colors*—Pearl and Gold

*Flower*—Narcissus

*In Facultate*

MISS LULU BICE





FOWLER, WINKLER, G. McCALL, MUMERT, WRIGHT, GRIMES  
DAVIS, EUTSLER, I. McCALL, EUNICE GERALD  
EGGER, LOGAN, COOLEY, SULLIVAN, ESTHER GERALD, WAGNER, BAIRD

## *Zeta Pi Phi*

Organized in 1923

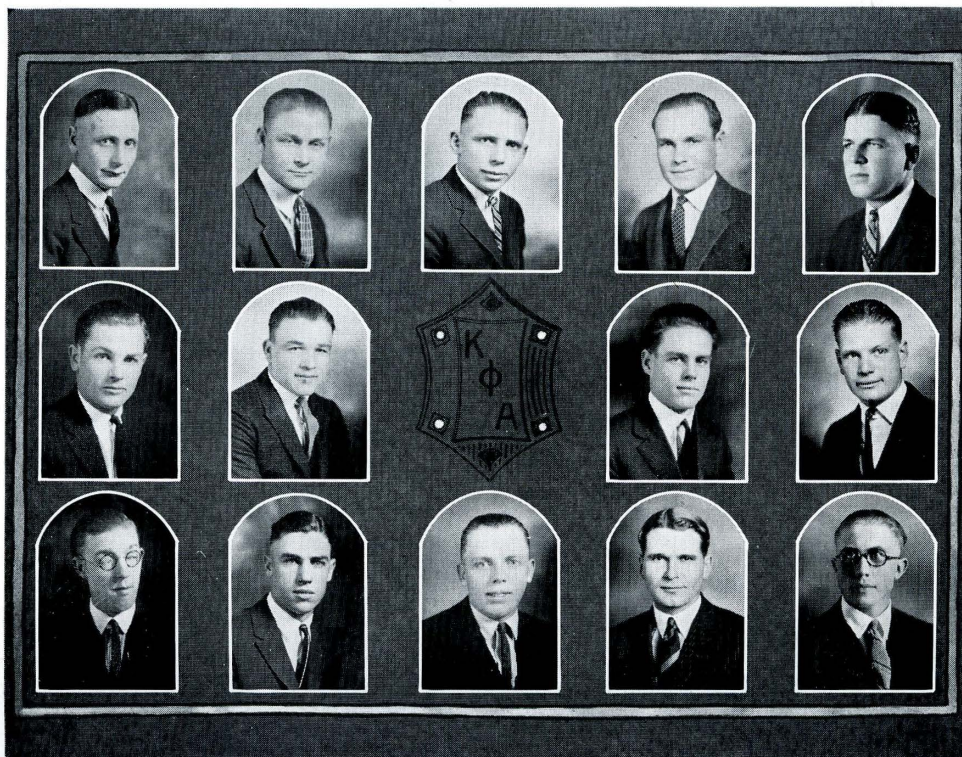
*Colors*—Pink and Green

*Flower*—Pink Carnation

*In Facultate*

MISS LULU McKEE





OYER, LEWIS, E. LORBEER, RENNER, COMBS  
OPDYCKE, REED, BARRY, MEYER  
BENSON, HINKHOUSE, A. LORBEER, MESSICK, SJORGEN

## *Kappa Phi Alpha*

Organized in 1923

State Charter December, 1923

*Colors*—Purple and White

*Flower*—Sweet Pea

### PLEDGES

IRWIN McVEY  
HOMER DUMM  
JOE TIMKEN  
BURTON OSBORNE  
IRA RHOADES





SHEARER, SHIVELY, STRAWN, SMITH  
ROBERT DECKER, WARD, SNYDER, BLAND  
KULP, KOBLER, SHEA, RAYMOND DECKER, FARQUHARSON, BAKER

## *Iota Kappa Tau*

Organized October 9, 1923

*Colors*—Crimson and White

*Flowers*—Red and White Carnations

### OFFICERS

#### *First Semester*

EMMETT SMITH	.	.	.	.	.	<i>President</i>
ROBERT DECKER	.	.	.	.	.	<i>Vice-President</i>
RALPH WARD	.	.	.	.	.	<i>Secretary-Treasurer</i>

#### *Second Semester*

FRANK SHEARER	.	.	.	.	.	<i>President</i>
RALPH WARD	.	.	.	.	.	<i>Vice-President</i>
JOHN SHIVELY	.	.	.	.	.	<i>Secretary</i>
DONALD STRAWN	.	.	.	.	.	<i>Treasurer</i>





MINNIX, COSTNER, KNOWLES, MISS BLAKE, ROSS, THOUVENELL, LARSON  
MILLER, R. ROUNER, CARPENTER, BROWN, MISS AGNEW, DAWLEY, NELSON  
BARRY, FISH, RICHARDSON, HERNDON, PALMER, V. ROUNER, MISS SNODGRASS

## *Gamma Kappa Pi*

Organized in 1922

*Colors*—Pink and Green

*Flower*—Carnation





LARSEN, FULTS, ALLBERT, MISS POWELL  
BROOKS, FERGUSON  
LULU MCKEE, SIMS, LEWIS, MISS AGNEW





HADDOCK, BLENDER, HILL, SPENCER, MISS RANDS  
PAPE, FRENCH  
GORDANIER, EUTSLER, JENSEN, ANNA MCKEE



# *The Commercial Club*



RANDS, SHEARER, GERALD, RADER, HILL, MESSICK, GERALD, STRAWN  
MORRIS, WAGNER, CLARK, BEST, BRENNER, SMITH, FISHER, BLENDER  
BARNETT, BELL, SHEETZ, SMITH, HOLLINGER, WARD, SCOTT, COMBS  
SHADE, BATLINER, PIATT, MCMICHAEL, PIERCE, BOXBERGER, CONROY, JONES  
EGGER, MCCALL, BLUME, HOOD, WYNETTE, CLARK, OHMART, EWER  
FARRELL, BLAZER, MCCABE, GOODSSELL, FRANK, BOYLE, MCJIMSEY, OHEIM  
TRIMMER, VANCE, PEPPER, FOGLE, PAYNTER, ASHWORTH, HODSON, DR. VANCE





COOPER, MUMMERT, FUTSLER, STEINLE, INA MILLER  
KNOWLES, H. DAVIS  
CZESKLEBA, A. DAVIS, IONE MILLER, PROFFIT, ECKART

*I. K. S. K.*

Organized in 1923

IN FACULTATE

MISS ELIZABETH J. AGNEW



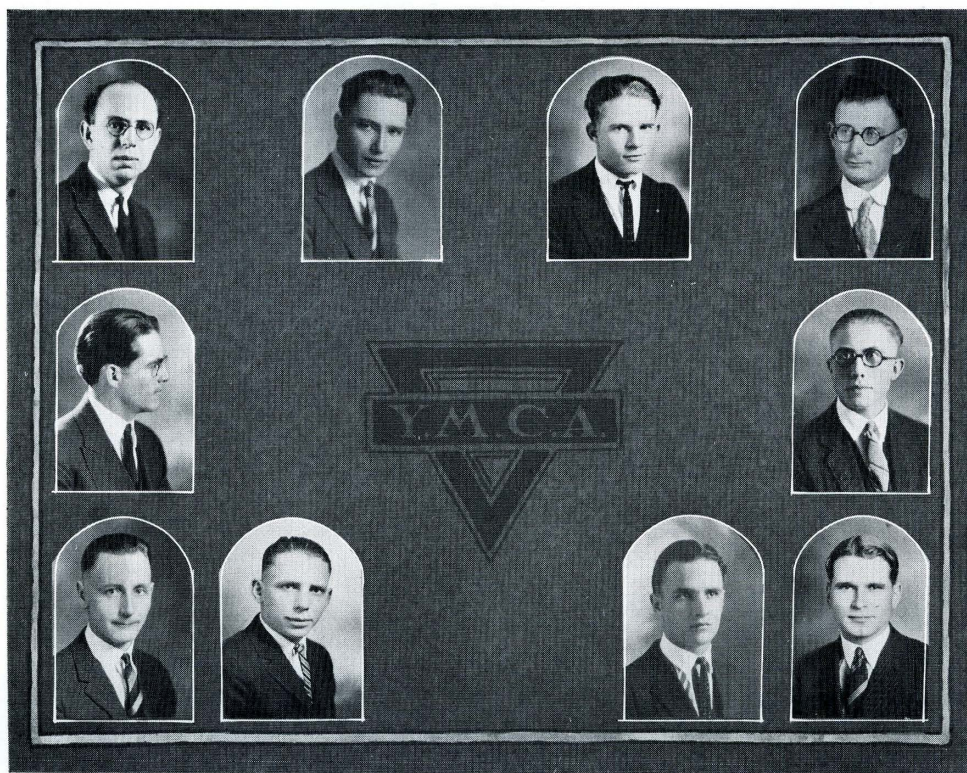


WINKLER, HOWER, HEDGES, CARPENTER  
IONE MILLER, INA MILLER  
KNOWLES, DAVIS, KIRKWOOD, FOWLER

## *Y. W. C. A. Cabinet*

<i>President</i>	GERTRUDE WINKLER
<i>Vice-President</i>	KATHRYN CRETCHER
<i>Secretary</i>	MATILDA HOWER
<i>Treasurer</i>	EVA HEDGES
<i>Undergraduate Representative</i>	DIXIE CARPENTER
<i>Publicity</i>	ESTHER GORDANIER
<i>Social</i>	IONE MILLER
<i>Social Service</i>	MILDRED KNOWLES
<i>World Fellowship</i>	HANNAH DAVIS
<i>Devotional</i>	INA MILLER
<i>Finance</i>	JESSIE KIRKWOOD
<i>Big Sister</i>	ALICE DAVIS
<i>Music</i>	BERNICE FOWLER
<i>Faculty Advisor</i>	MISS AGNEW





TENNANT, HADDOCK, REIGEL, LONG  
WOOTERS, SJORGEN  
OYER, LORBEER, FORKER, MESSICK

## *Y. M. C. A. Cabinet*

<i>President</i>	GEORGE TENNANT
<i>Vice-President</i>	CHESTER MAXWELL
<i>World Service</i>	EMIL SJORGEN
<i>Campus Service</i>	ERNEST LORBEER
<i>Promotion Committee</i>	EARL OYER
<i>Community Service</i>	WILLIAM HADDOCK
<i>Social and Industrial Research</i>	BENJAMIN WOOTERS
<i>Membership</i>	JOHN FORKER
<i>Devotional</i>	ANDREW REIGEL
<i>Finance</i>	HAROLD MESSICK
<i>Secretary and Treasurer</i>	JESSE LONG
<i>Faculty Advisor</i>	F. B. LEE

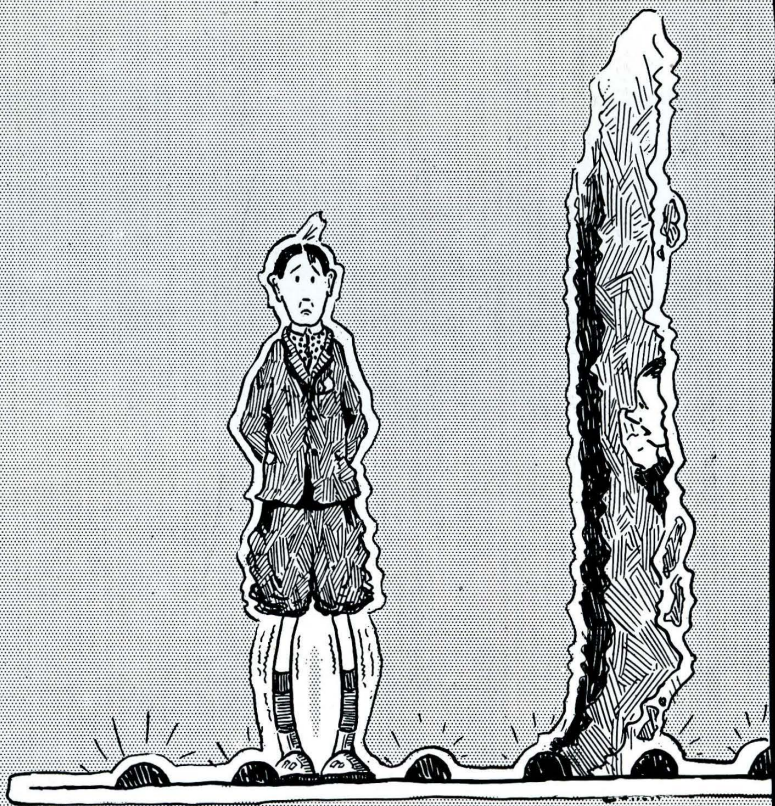




*The Fountain in Winter*



# PLATFORM







TILLOTSON

GRIMES  
WINKLER

HOKE  
HAYES

FOWLER

## *Kansas State Teachers College Sextette*

THE Kansas State Teachers College Sextette has been one of the most active organizations in the Music Department. They have assisted in many musical programs, and will give a concert on the Music Festival Program.

The members of the Sextette are:

*First Soprano*  
LOUELLA GRIMES  
BESSIE TILLOTSON

*Second Soprano*  
LUCY HOKE  
GERTRUDE WINKLER  
*Accompanist*—HELEN ZERZAN

*Alto*  
BERNICE FOWLER  
HAZEL HAYES

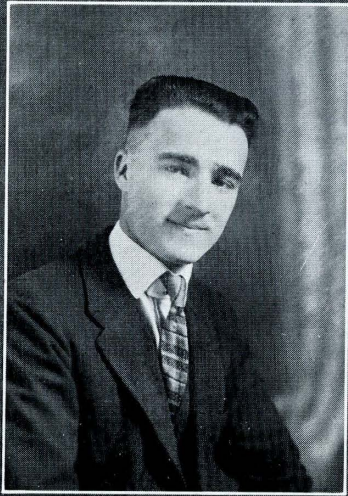




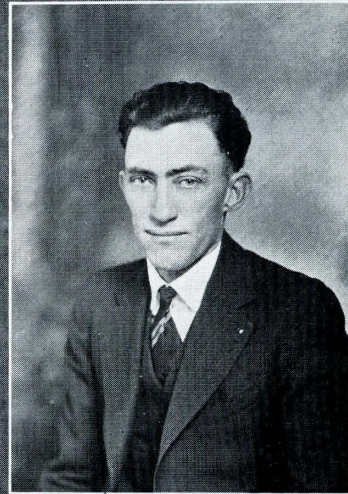
## *Anniversary Day*

The Second Thursday in February of each year is celebrated as Anniversary Day in commemoration of the day the legislature of Kansas accepted the grant of the Fort Hays military reservation by the United States Congress for a Normal School, Thursday, February 7, 1901. The celebration aims to keep alive the best traditions of the institution, to pass in review the notable events in the history of western Kansas and the school, to evaluate the present and enlarge the vision of the future.





EDGAR REED



CARL HODSON

## *Debate*

Kansas State Teachers College of Hays  
vs.  
Kansas State Teachers College of Pittsburg  
Kansas State Teachers College of Hays  
vs.  
Kansas City University

*Question:* Resolved, that the United States should join the League of Nations.



BERNARD BRUNGARDT



OTIS DOANE





ORRIN DON THURBER

Mr. Thurber represented Kansas in the Teachers' College Oratorical Contest at Stevens Point, Wisconsin, Friday, May 2, 1924.

His subject was "Education and World Progress."





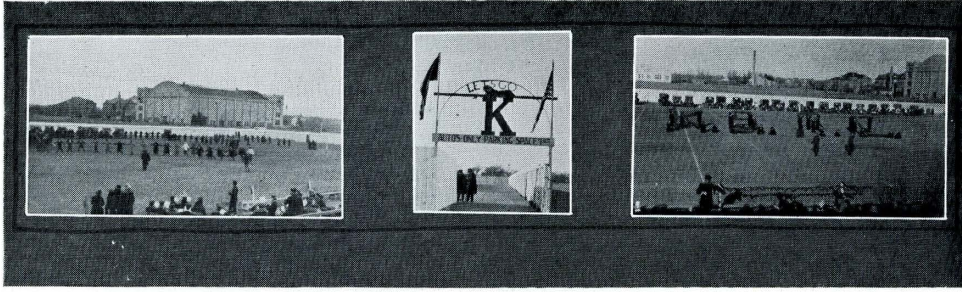
**COMEDY**





Chans





If all the freshmen were placed in a line, holding hands, they would reach more than half way across the Lake. A lot of people are in favor of this scheme.

Dean Lee: "You're drunk. I saw you running around here in a circle."

Freshman: "No, sir, I'm not drunk. I was just trying to read the name of a Victrola record while it was playing."

"Hazel, it would please me very much if you should entertain your friend without turning the lights off in the parlor," Mother Cave spoke with chilly sweetness into the all-en shrouding darkness of the parlor. There was no reply.

"Hazel, did you hear me?"

All was quiet. Mother Cave was provoked, disgusted and impatient. She spoke sharply:

"Hazel, turn on those lights or I'll come in there this very minute."

Still there was no answer. Mother Cave charged swiftly through the hall; she clutched momentarily for the switch and then the scene was flooded with incandescent radiance. The room was empty. They had gone to a movie.

Hope: Ben said he'd kiss me or die in the attempt.

Frieda: Good gracious, did you let him?

Hope: Well, you haven't seen any funeral notice, have you?

"My!" exclaimed Mr. Clumsey, "this floor is slippery. It's hard to keep on your feet."

"Oh," replied his fair partner coldly, "then you were really trying to; I thought it was accidental!"

She: Hello, Jack, how are you?

He: Wonderful, thanks.

She: Well, I'm glad someone thinks so.

"I have a chance for the track team."

"Why, are they going to raffle it off?"

"Yes, I have two boys in college."

"What is their yell?"

"Money, money, MONEY."

My alarm clock went off this morning at eight-thirty.

Hasn't it come back yet?

"Why don't you drown your sorrow?"

"They'd get me for murder."

Prof. Johnson: "I have only one friend on earth,—my dog."

"Why don't you get another dog."

Some girls are born ugly and others bob their hair.





Wooler



Wanderville



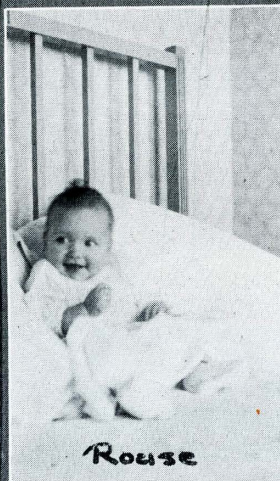
Wiest



Weidman



Davis



Rouse



Albertson



Starl

Father (lecturing wild son): "Suppose I should be taken away suddenly. What would become of you?"

Son: "Oh, I'd be here, Father. The question is what would become of you."

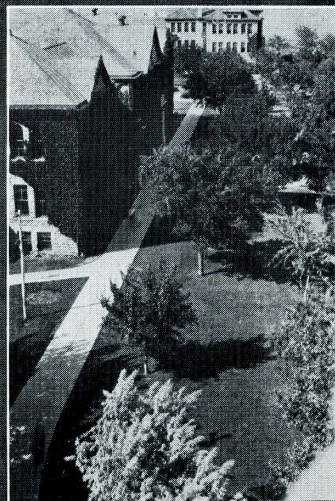
Mr. Shively (in Sociology Class): "If you were ordered to disperse a mob, what would you do?"

Student: "I'd pass around the hat."

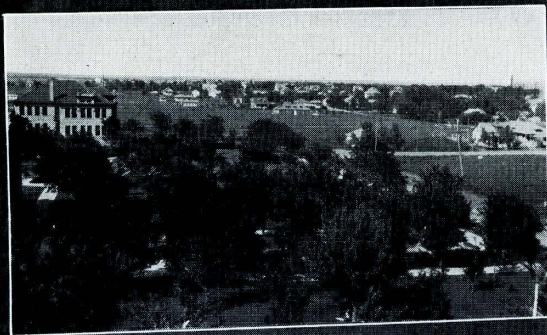




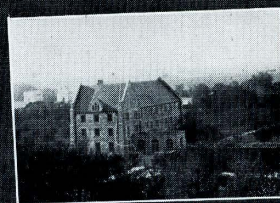
As Seen From the  
Industrial Hall



Looking North  
From Top of  
Colony



Bird's-Eye View from Colony



Industrial Hall

Alice: "Is Paul a good spender?"

Opal: "Yes, he spent seven evenings here last week."

Scientists have discovered that women talk less in February than in any other month.

She: "My, but you have charming eyes."

He: "Goodness! How's that?"

She: "Well, they're always looking at one another."

"Was the dance a success?"

"Yes, roughly speaking."





Teacher: "If I lend your father \$800.00 and he promises to pay me back \$200.00 a month, how much will he owe me in three months?"

"Eight hundred dollars."

"You don't understand arithmetic!"

"You don't understand my father."

#### COMMON KNOWLEDGE

She had descended in wrath upon her husband at the stage door.

"What are you doing here?" she demanded.

It was up to him to think quickly, and he did.

"Hello, my dear," he greeted her mildly. "I heard you were coming down town and, wishing to see you, I came here, knowing this would be the first place you would look for me."

A man went home in a lubricated state at 2 A. M.

To avoid waking his wife he removed his boots. This didn't seem to help matters much, so he took his socks off too, and finally most of his clothes.

He stepped up the stairs gingerly in this state and when he reached the top found himself in Waterloo Station.

"Are you sure this theme is perfectly original?"

"Yes, sir; but you may have seen a few of the words in the dictionary."



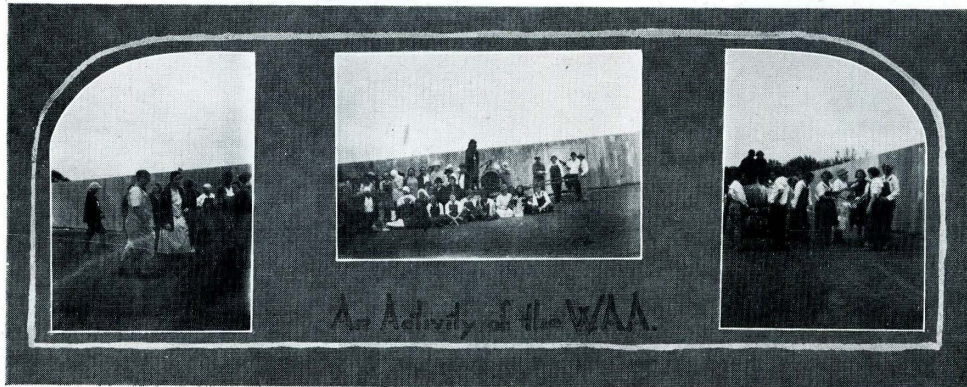


### CUSTER HALL MOTTO

Don't study when you're tired,  
Or have something else to do.  
Don't study when you're happy,  
For that would make you blue.  
Don't study in the day time,  
Don't study in the night,  
But study at all other times  
With all your main and might.







### GETTING MARRIED

Getting married surely is  
A problem.  
I had had several pretty  
Girls and just about the  
Time that I thought  
I had won each fair one  
Some good looking chap  
Came along and stole her.  
So I resolved upon a plan.  
I picked out a girl who  
Was as homely as the  
Side of a barn—long,  
Lean, lanky, bow-legged

And double-chinned,  
But who could sing  
Like a canary bird.  
I thought that nobody  
Would want her after  
They had had one good look.  
At the same time I thought  
Her singing would take the  
Place of beauty.  
I married her, and now  
Every time I look at her  
I have to ask her to  
Please sing for me.

Prof. Rankin (to Freshman Chemistry class): "Be careful when you handle that potassium cyanide. It is very poisonous. One drop of it on a rabbit's tongue would kill the strongest man."

### OH CAESAR!

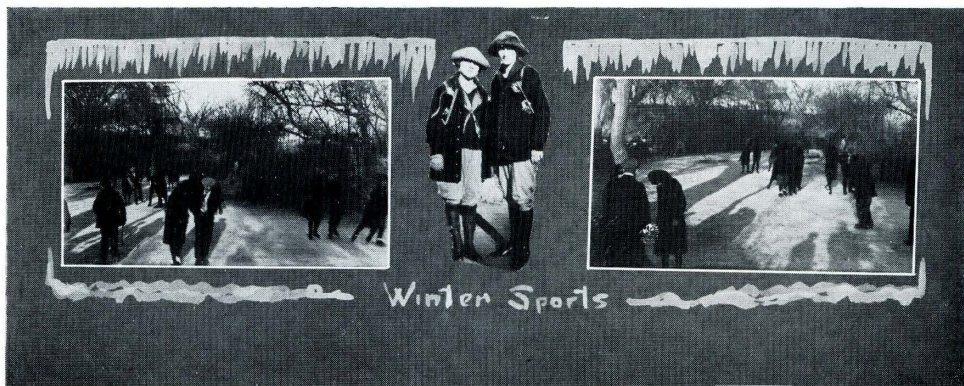
Did you ever  
Go to a seven forty-five  
In an awful hurry  
And sit and look at the  
NECKS  
Of the sixty students  
In front of you?  
The masculine necks,  
Some of them thin  
And some of them

Thick like a bull-dog's, and  
The pretty lady necks,  
Some of them looking like the  
Inside of a flour barrel  
And others a la naturelle.  
And did you have a funny  
Feeling all at ONCE  
And wonder whether you had  
Taken time to wash the back of  
YOURS?









Woman at her first ball game: "Goodness, isn't that pitcher just grand! Why he hits the bat no matter where the batter holds it."

'Prof. Seabury: "Dear, do you know I've had something hesitating on my lips for quite a spell?"

Miss Gibson: "Oh, my! And you know how I hate those little mustaches."

Student: "That coffee tastes like dirt."

Waiter: "It ought; it was ground this morning."

First Student: "So that pint of chem department alcohol you had saved your life?"

Second Student: "Yes, a friend of mine got hold of it and drank it."







### WRITTEN UPON LEAVING CLASS

Mr. Wooster was my teacher; I did not get an "H."  
 He madeth me to hunt birds' nests all over this campus,  
 He madeth me to expose mine ignorance before the class.  
 He also madeth me take examinations for my grade's sake,  
 Yea, though I walked through the halls of this College forever,  
 I will never take Zoology 52; no, never.  
 He madeth me to color hundreds of birds and recognize them by their callings,  
 He used to scold me in the presence of mine enemy,  
 He madeth me to go out on bird hikes at five o'clock in the morning.  
 Surely that "P" shall follow me all the days of my life, and I shall live in fear  
 and hatred of Zoology 52 forever.





Edna: Do you ever allow a man to kiss you when you're out motoring with him?

Goldie: Never; if a man can drive safely while kissing me he's not giving the kiss the attention it deserves.

Allan: I don't believe there is a devil, do you?

Corder: I don't know, why?

Allan: Naw! There ain't any; its just like Santa Claus, it's your Dad.





Idealism and finer feelings have not entirely ceased to exist as shown by this anonymous sonnet.

Her beauty lay  
Upon her like a  
Dishrag upon a  
Lunch counter.

His blood leapt  
In his veins like  
Water in a steam  
Radiator.

His lips were  
Sugar with  
Sweetness.

Hers were cream  
In their softness.

Sugar and Cream.

Note the similarity of the imagery here to the opening lines of Milton's "Lycidas." The effect of George Jean Nathan and Carl Sandburg is apparent here also.

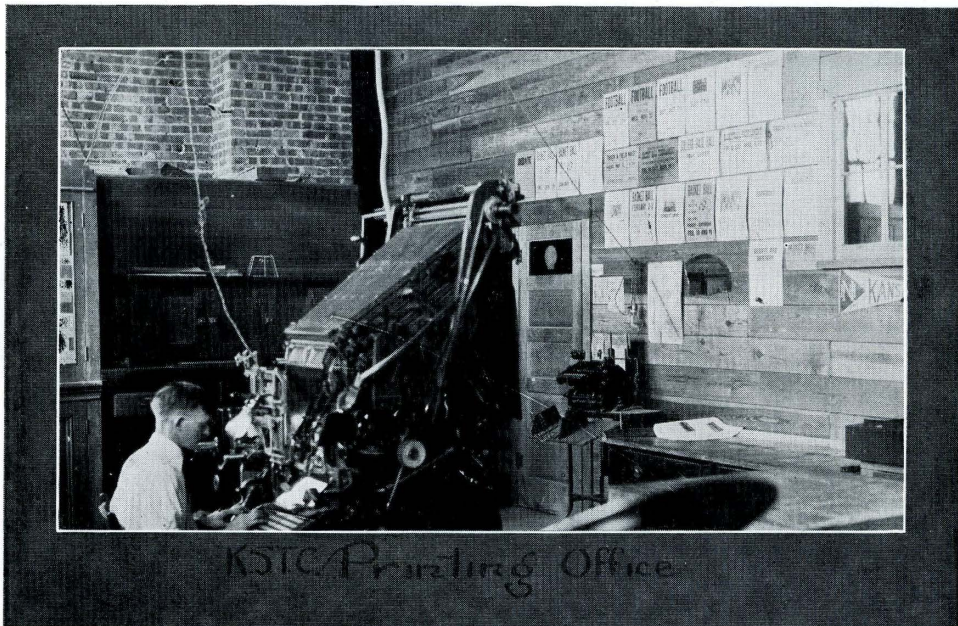
Note the strength of these lines. LOVE is all powerful, as the author points out.

#### AFGHANISTAN LOVE SONG

Don't like onion,  
Olives are rank;  
Don't like nothin'  
'S generally drank.  
Can't do nothin',—  
There's nothin' to do.  
Don't like nothin'  
Exceptin' you.

Lots o' good points  
There is 'bout me.  
Ain't mean cause I'm  
Too lazy to be.  
I'm too good fer most  
To give myself to.  
Wouldn't marry anyone  
Exceptin' you.





### WHY MEN LEAVE HOME

Well-meaning husband (to his guests): "If I had it to do over again, do you know whom I'd marry? My wife."

Wife: "No, you wouldn't either."

### THE COLLEGE "BADMAN'S" DAY

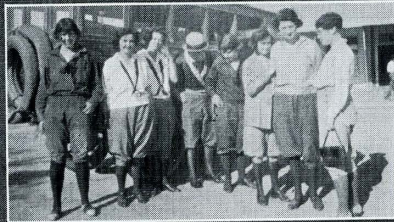
#### *As He Hopes His Classmates Think*

- 12 M. Arises, eats breakfast, and
- 2 P. M. Reads mail from thirteen beautiful girls who want him for dances (cuts all classes).
- 7 P. M. Eats dinner in Bohemian restaurant with chorus girl. After the show they go to an Oriental dance hall, and then joy ride till dawn. He is carried home and put to bed too drunk to find his way.

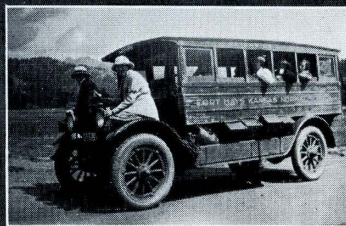
#### *As It Is*

- 7 A. M. Gets up and studies till class time.
- 8:30 A. M. Five classes.
- 5 P. M. Goes to gym. class.
- 8 P. M. Has a date with Cousin Matilda. Her father sits between them and shows the "album."
- 9:45 P. M. Goes home to bed.





ESTES  
PARK







She: Something is preying on Dick's mind.

He: Never mind, it will die of starvation.

"I may be down but I'm not out," thought the runner as he safely slid into third.

Student (to photographer): I look too stout in this photograph.

Photographer: Perhaps I developed that one too much.

Breathes there a maid with soul so dead,  
Who never to her man hath said—  
"When do we eat?"

"Go to the Devil," said Mrs. Satan when the collector presented his bill.

Phil: Brevity is the soul of wit.

Osopher: Aren't some girls humorous in their dresses!

Bride (consulting cook book): "Oh, my, that cake is burning and I can't take it out for five minutes yet."

Mother: What makes the little boy next door so shy?

Dorothy: I hit him with a rock.

Doctor: You seem to be all run down, Mrs. Peck. Let's see your tongue?

Henry: That's right, Doc; you guessed it right off!





When the vamp us  
On the campus,  
Spring has came;  
When each maiden  
Starts paradin',  
Spring has came;  
Boats agoin' up the  
river,  
Couples out in every  
flivver,  
And the dance halls  
All a-quiver—  
Spring has came.

The distance between the ears of many a youth is just exactly one block.  
A frost will blight a bloomin' peach tree but can't stop a bloomin' bore.  
If a woman's beauty increases with the size of her vanity case, the men are in grave danger these days.

When the 10 o'clock scholar comes to college he evolves into the lounge lizard.

#### THE PROBABLE REASON

"Why did Margaret insist on being married in an aeroplane?"

"I don't know, unless it was because no man on earth was good enough for her."

#### SONG OF HOPELESS LOVE

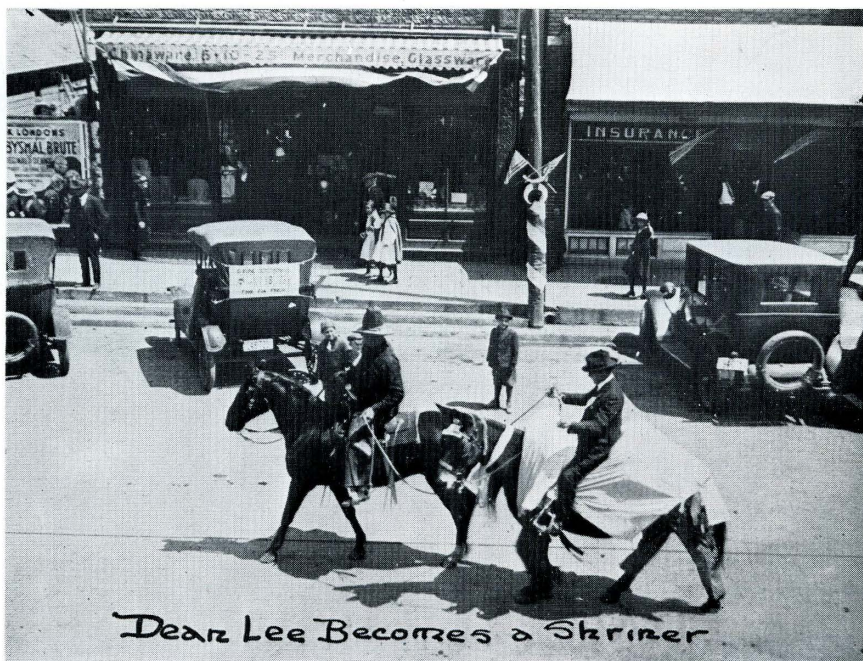
Lady I saw in the subway today,  
This is my poem of love,  
Frolicsome, sprightly and graceful and gay,  
Smiling at me from above.  
Though I have seen you each day for a  
year,  
And your smile seems to beckon and  
greet,  
Beautiful lady, I very much fear  
That never shall you and I meet.  
It's not that I'm bashful or backward or  
shy;  
It's not my intentions are bad,  
I'm just a human and flesh-and-blood guy,  
And you are a silk-stockings ad.







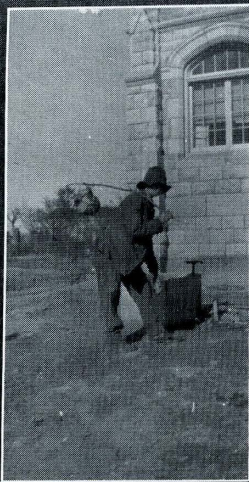
Miss Snodgrass (in Foods Class): "Figs and dates are very scarce now. In fact, it is almost impossible to get a date."



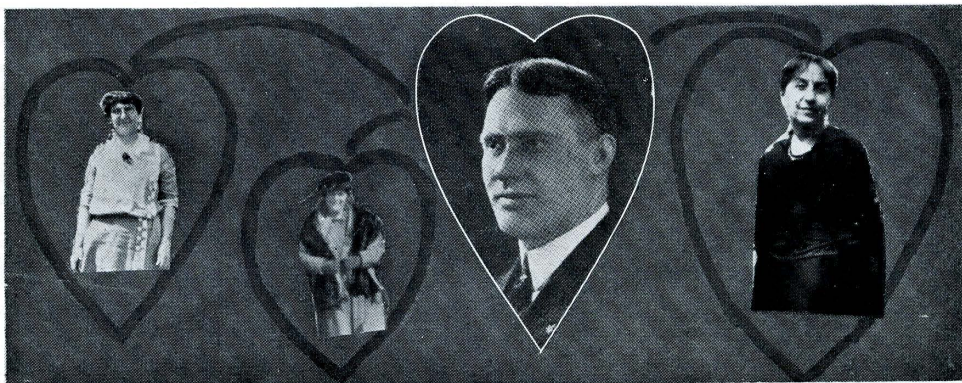




# Freaks and Bums and





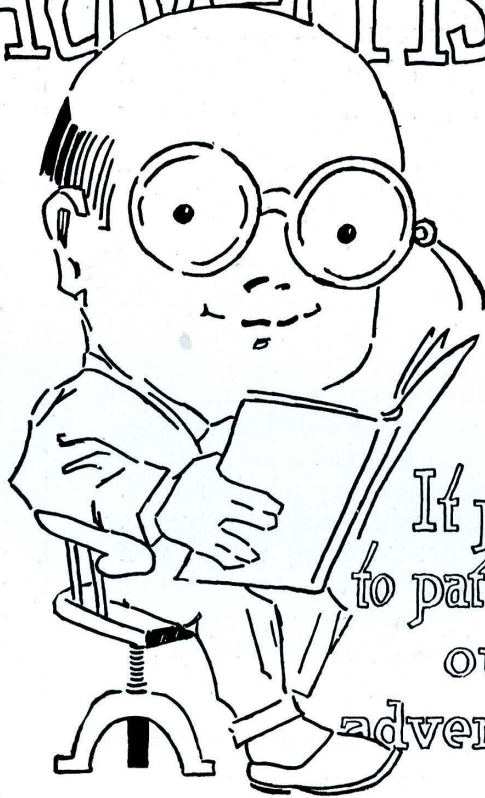


How to be a college student:

- I. Sit around in your room at night in your bathrobe and pink pajamas, with a few goofy friends and give a little vocal harmony.
- II. Always carry a lot of books around with you. You needn't study, but appear to be in a frantic hurry to get to the Library. This will impress the professors.
- III. A cigarette holder is considered to be quite the thing.
- IV. Be sure and get an old junked car and make a bearcat of it. Take a gang of fellows out in it, and chase up and down the streets and sing at the top of your voices.
- V. Wear your hat well down over your eyes, grow a downy upper lip, wear slightly long hair with a hint of sideburns, and go without a collar. Oh, yes! By no means forget the cigarette.



# Advertising



It pays  
to patronize  
our  
advertisers



### *They Backed Us Up!*

**T**HE success of this book depended largely upon advertising. The merchants made manifest their spirit of support, as is evidenced in the following pages. Show these loyal supporters who so magnificently helped us in this work that their favor is not unappreciated. We on the staff know and feel how much they did for us, and you are asked to support them in every possible way. They will treat you square, Students! They went much farther for us.

*Thank you, Advertisers!*



## REVEILLE ADVERTISERS

J. B. BASGALL  
JOHN M. MILLER  
J. B. BYARS Co.  
H. A. NICKLES  
GRASS BROS.  
P. V. GOTTSCHALK  
OEHLER & STEIMEL  
KING BROS. PHARMACY  
J. T. MORRISON  
J. G. BRENNER  
THE CLASSIC STORE  
HARKNESS PHARMACY  
A. A. WIESNER  
R. S. MARKWELL  
EDWIN W. HILL  
BISSING BROS  
WM. J. BELLMAN  
SCHERMERHORN'S  
THOLEN'S JEWELRY STORE  
HAYS CITY DRUG STORE  
FIRST NATIONAL BANK  
R. M. DREES  
M. HAFFAMIER & SON  
O'LOUGHLIN GARAGE  
ELLIS COUNTY NEWS

THE RAPID SHOE REPAIR SHOP  
ELIZABETH CONDIT  
THE HAYS CITY FLOUR MILLS  
H. H. WINTERS  
SCHLYER & ARNOLD  
A. J. BASGALL  
W. B. DANIELS  
T. G. REED & SONS  
THE CHOCOLATE SHOP  
TREAT, SHAFFER & Co.  
FELTEN'S TRANSFER AND STORAGE  
F. F. GLASSMAN  
RED ARROW STUDIO  
STRAND THEATER  
H. B. NEISWANGER  
OSHANTS' VARIETY STORE  
OLDHAM GARAGE  
GOLDEN BELT GARAGE  
CITIZENS STATE BANK  
BIRD INVESTMENT Co.  
F. J. HOCH  
GOLDEN BELT CREAMERY  
W. F. CZESKLEBA  
FARMERS STATE BANK  
LACY & RIGGS TIRE SHOP  
GOODIE GARDEN



39 Stores

*J.B. Byars Co.*

39 Stores

DRY GOODS, READY-TO-WEAR, CLOTH-  
ING, SHOES, NOTIONS, LADIES' AND  
GENTS' FURNISHINGS, MILLINERY, ETC.



OUR MOTTO

Buy and sell goods for cash and save each  
customer money

PHONE 245

HAYS, KANSAS

CHESTNUT STREET

---

*The Farmers State Bank*

CAPITAL AND SURPLUS, \$75,000.00

JOHN S. SACK	President
N. M. SCHLYER	Vice-President
F. W. ARNHOLD	Cashier
MARY E. BISSING	Assistant Cashier

Bank accounts opened with us are appreciated  
and will receive special attention

*The Bank Where You Feel at Home*

HAYS CITY

KANSAS



# QUALITY

*The First and Last Word in Jewelry*

Our Guarantee of Quality which goes with each article sold at this store is the highest form of protection available to you in jewelry purchase.

**J. T. MORRISON**

*Jeweler and Optometrist*

105 N. CHESTNUT STREET

HAYS, KANSAS

PHONE 152

## *Oshants' Variety*

A Little More  
A Little Better  
For  
A Little Less

SOMETHING FOR EVERYBODY

## The Elizabeth Condit Shop

MILLINERY      SWEATERS  
DRESSES      SKIRTS  
COATS      BLOUSES  
and  
DRESS ACCESSORIES

HAYS

KANSAS

*Call on*

## *Hoch Monument Works For Monuments*

Large Stock to Select From.  
Quality of Workmanship  
and Material First-Class.

FRANK J. HOCH, *Proprietor*  
Prices Reasonable

HAYS

KANSAS

## Lacy and Riggs *Tire Shop*

GENERAL TIRE AND  
TUBE REPAIRING

A good line of tires and  
tubes and tire accessories

111 S. FORT ST.

HAYS, KANSAS



## H. H. WINTERS

*Full Line of*  
GENERAL HARDWARE



At Your Service at  
Any Time

*Let Us Serve Your  
Next Needs*



HAYS

KANSAS

## HUDSON AND ESSEX AUTOMOBILES

HUDSON.....\$1425  
ESSEX..... \$975

## *Schlyer & Arnold* *Hardware*

CLIPPERS AND ELECTRIC  
CURLING IRONS

## THE RAPID SHOE REPAIR SHOP

QUALITY SHOE  
REPAIRING

*C. Schafer*

N. MAIN ST.

HAYS, KANSAS

## *King's Kwaliti Ice Cream*

AS GOOD AS THE NAME IMPLIES

### WHY KING'S KWALITI ICE CREAM IS BEST

It contains 14 per cent butterfat.  
It contains 24 per cent milk solids.  
It contains 12 per cent sugar.  
Is flavored with true fruit.

### WHY KING'S KWALITI ICE CREAM IS SAFEST

Pure Food products only are used.  
The entire mix is Pasteurized.  
The entire mix is Viscolized.  
The Ice Cream is held at a temperature of zero.

If you live in the west,  
You can have the best,  
By calling for,  
King's Kwaliti Ice Cream.

## GOLDEN BELT CREAMERY *and* ICE COMPANY, INC.

HAYS

COLBY

PLAINVILLE



# BRENNER'S

*The Most Modern and Up-to-Date Store in Western Kansas*

YOU WILL FIND HERE:

The Newest Styles at all times in—  
Young Ladies' and Men's Ready-to-Wear Garments.  
We guarantee satisfaction with every purchase, or  
money refunded.

## J. G. BRENNER

HAYS, KANSAS

PHONE 70

DRY GOODS, CLOTHING, SHOES, LADIES' READY-TO-WEAR

*Ladies' Rest Room on Balcony Floor*

GEO. S. GRASS, JR.

E. B. GRASS

## GRASS BROTHERS

"GOOD THINGS  
TO EAT"



PHONES 4-497

HAYS, KANSAS

## THE BIRD INVEST- MENT COMPANY

HAYS, KANSAS

BUILDERS OF  
MODERN HOMES



Planned and Developed

*"Pershing Heights"*

modern restricted residential  
district of Hays



H. H. KING

GEO. KING

# KING BROS. PHARMACY

*The **Rexall** Store*

*We Serve You Better*

Finest line of candies in the city. Our fountain service is the best. The students' headquarters for stationery. Everything to be found in a first-class drug store.

The Home of Good Goods and Square Dealing.

TELEPHONE 80

HAYS, KANSAS

## OLDHAM BROS.

*Drive It Yourself Livery*

Auto Supplies  
and Repairs

PHONE 335

201 E. JUNIATA

"What did Oley do when you called him a fool?"

"He run, the coward—but he couldn't catch me."

"What would you do if Oley called you a fool?"

"Which Oley, the big one or the little one?"

### MUSICAL NOTE

The Human Fish sat down to the piano, tore off a scale or two, while the dog-faced man barked in glee.

It was cold  
Her hands were cold, too,  
And I—well, wouldn't you,  
If it was cold  
And her hands were cold, too?





*The Mark of Quality  
on Fine Books and  
Bindings*



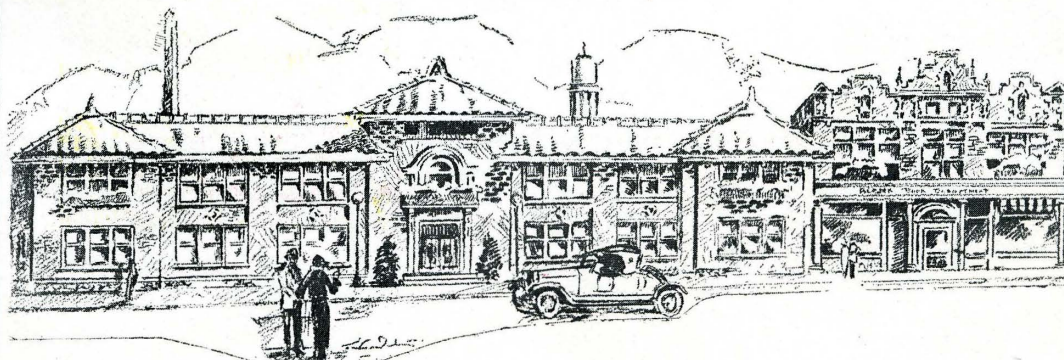
## Proof of Merit

**T**HE ANNUAL STAFFS of the Universities and larger schools and colleges of Missouri, Texas, Kansas, Arkansas and Oklahoma have, for the past nine to five consecutive years, signed printing contracts with The Hugh

Stephens Press. **Q** The reasons are obvious. The quality of Kraft Built College Annuals, and the friendly, helpful service that make them successful, are recognized and appreciated by every live College Annual staff.

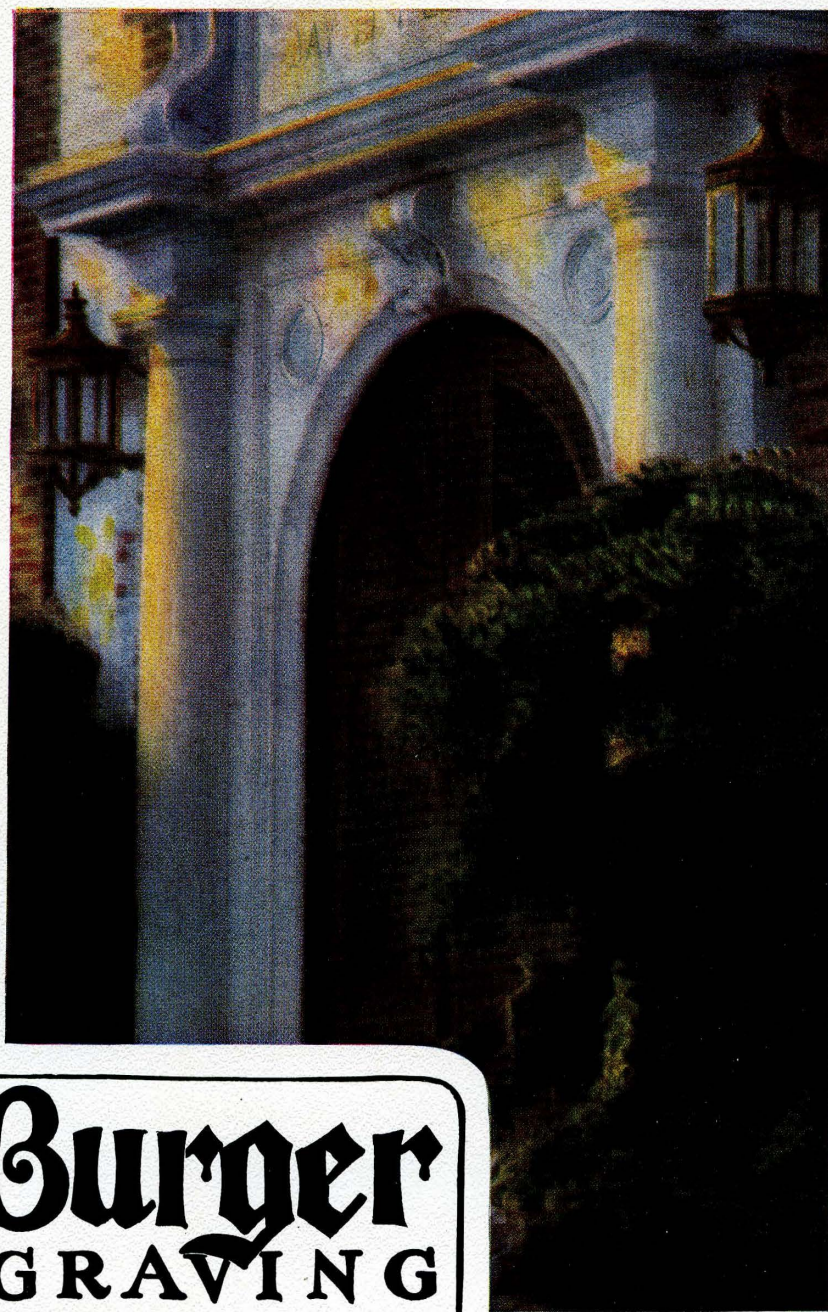
### THE HUGH STEPHENS PRESS

JEFFERSON CITY, MISSOURI



*Where Kraft Built Products Are Made*





**The Burger**  
**ENGRAVING**  
**COMPANY**

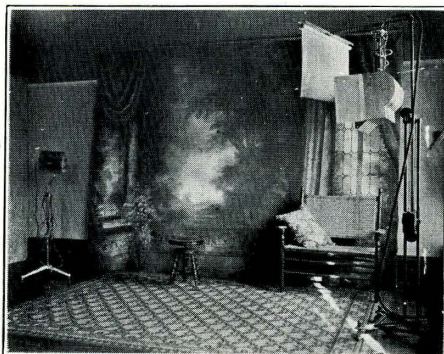
**EIGHTH and WYANDOTTE**  
**KANSAS CITY, MISSOURI**

**Builders of Distinctive Year Books**



## "PHOTOGRAPHY that PLEASES"

No DARK days  
with our modern  
lights



PHOTOGRAPHS  
Kodak Finish-  
ing and En-  
largements

It has been a pleasure to do the photography  
for the 1924 Reville and we appreciate the  
pleasant co-operation of every member of the  
school.

### *The Red Arrow Studio*

OPPOSITE POST OFFICE

HAYS, KANSAS

ALTHOUSE-SPERRY, Props.

## WIESNER'S DEPARTMENT STORE

A. A. WIESNER

We invite you to make this store your  
SHOPPING CENTER while in HAYS.

DRY GOODS, CLOTHING, SHOES, NOTIONS,

RIBBONS, LADIES' READY-TO-WEAR.

GROCERIES AND QUEENSWARE



*The Largest Department Store in Western  
Kansas*

S. CHESTNUT

PHONE 88

HAYS, KANSAS



## GOODIE GARDEN

Home-cooked Food for  
Home-sick Students



Alumni, students and  
readers of the  
REVEILLE  
when in town make  
the Goodie Garden  
the place to meet  
your friends



## GOODIE GARDEN

M. ALDICE BEEBY

## A BREAD STORY TOLD BRIEFLY

The best bread must  
be baked from the  
best wheat flour. In  
Western Kansas is  
grown hard winter  
wheat, universally  
recognized as the  
best quality from  
which to manufac-  
ture flour.

### *Semolino Flour*

is made from this  
hard winter wheat.  
That tells you,  
briefly, why bread  
baked from

### *Semolino Flour*

is the best bread!



SEMOLINO FLOUR IS THE  
PRODUCT OF THE

## HAYS CITY FLOUR MILLS

HAYS, KANSAS



## *Basgall's Cafe*

We Like to Serve  
to Students

A. J. BASGALL  
NORTH MAIN ST. HAYS, KANSAS

## W. B. DANIELS

*Dentist*



OFFICE IN REEDER BUILDING  
PHONE 351

## *College Shop*

*Cleaning, Pressing  
and Tailoring*

WE have one of the largest and best equipped Cleaning Plants in Western Kansas. We give you absolutely the best in Cleaning, Pressing, Repairing, and all kinds of Alteration. All garments are absolutely odorless after going through our process. Our prices are reasonable. For out-of-town customers we pay Parcel Post Charges.

## BISSING BROS.

PHONE 208 202 S. CHESTNUT  
HAYS, KANSAS

## GOLDEN BELT GARAGE

JOHN R. STAAB, *Proprietor*

PHONE 475

Automobile Repair Work  
Tires and Accessories

DODGE and BUICK  
SERVICE

GOODYEAR  
SERVICE STATION

*Open Day and Night*

HAYS

KANSAS

St. Peter: "And what have you done to warrant admission?"

Letha Best: "I was Editor of the Reveille."

St. Peter: "Go in and pick out your harp."

Prof. Wiest: "Who wrote Gray's 'Elegy'?"

Ham Lewis: "Why-er-Dickens, I think."



# KODAKS



## KODAKS

and Kodak Supplies of all kinds always on hand and always new.

## EASTMAN N. C. FILMS

The film with 27 years' experience behind it. Developing and printing done by experts, or materials to do do your own.

We make it a point to carry only goods of known quality and established reputation. That is why you will find only genuine Kodak goods in our Camera department.

Headquarters for  
Kodak Supplies

**HARKNESS PHARMACY**

HAYS  
KANSAS



## Our Line—

EDISON GRAPHAPHONES, RECORDS,  
VIOLINS, BANJOS AND UKELELES,  
CLARINETS, SAXOPHONES, SHEET  
MUSIC AND ROLLS.

**CZESKLEBA MUSIC CO.**

HAYS

KANSAS

## HILL'S

*Cash and Carry—Help Yourself*

**QUALITY GROCERIES**

**FRESH FRUITS AND VEGETABLES**

*Service is Our Motto*

The Store that Appreciates the  
Students' Trade

PHONE 432

HAYS, KANSAS

## The Chocolate Shop

ICE CREAM—SODAS  
LUNCHEONETTE

*Home-Made Candies*

Where Your Trade  
is Appreciated

116 W. SOUTH MAIN HAYS, KAN.



—*The Cornerstone*—

The confidence that every student has in the quality of our Furnishings and the Service of our Cleaning Department is a confidence that has been handed down from student to student. —a confidence that we prize above all else, for it is the very cornerstone of this institution.

JOHN M. MILLER

*Men's Furnishings*

*Modern Dry Cleaners*

*J. B. Basgall*

FRUITS GROCERIES  
QUEENSWARE



HAYS

KANSAS

Prof. Miller: "I want a hair cut."

Barber: "Any particular way?"

Prof. Miller: "Yes; off."

Note: "But not ALL off."

—  
"Does your car have a warning signal on it?"

"Yes, it has a little round thing on the front that says "Dodge Brothers."

CARD PARTY

The sighing lover led a heart,  
The girl for a diamond played,  
The father came in with a club,  
And the sexton used a spade.



## HAYS CITY DRUG STORE

DRUGS SODAS CANDY CIGARS

*We specialize in high grade toilet preparations*

We solicit your trade because our goods are fresh, our stock is complete, our drugs are pure, and we give you what you ask for

*Prescriptions a Specialty*

PHONE 348

HAYS CITY DRUG STORE

## WM. J. BELLMAN

*The Winchester Store*

THE HOME OF QUALITY HARDWARE

Winchester  
Guns and  
Ammunition

**SPORTSMAN'S  
HEADQUARTERS**

Winchester Fishing  
Tackle and  
Baseball Equipment

*We carry a complete line of Winchester Tools, Flashlights & Cutlery*

TO give its readers all the news that's printable and to be useful in every way it can to the city and community it serves, this newspaper devotes its best efforts

*The  
Ellis County  
News*

JOHN S. BIRD

FRANK MOTZ

*Headquarters for*  
STYLISH CLOTHING  
AND SHOES FOR  
THE COLLEGE MAN

COLLEGIAN CLOTHES  
J. C. ROBERTS SHOES

OEHLER and  
STEIMEL

*One Just Price*

*Just One Price*



## Everything to Eat and Wear

Fresh Fruits and Vegetables in Season.  
We Guarantee Everything We Sell.  
The best is none too good for you.



H. A. NICKLES  
*General Merchandise*

HAYS

KANSAS

### UNIFORM EXCELLENCE



### AND PRICE ADVANTAGES

We do fine repairing and guarantee our work. Registered Optometrist. Eyes examined, Glasses fitted. We are competing with every other source of supply for your permanent trade, NOT the individual sale.

Prices reduced to pre-war basis, including repair work. Write for prices and compare with others.

Doesn't it stand to reason, therefore, that we should maintain a quality of uniform excellence and give you all the price advantages possible. A trial will convince you.

To out-of-town patrons of our repair department, Uncle Sam will bring your work to us for a few cents and insure delivery. Send your watch and jewelry repair work by INSURED PARCEL POST.

### THOLEN'S JEWELRY STORE

*The Home of Reliability*

108 SOUTH CHESTNUT STREET

HAYS, KANSAS



## CITIZENS STATE BANK

Your fellow student banks here.  
Ask him if he does not get satis-  
factory and helpful service.

CAPITAL AND SURPLUS  
\$100,000.00

C. G. COCHRAN	President
P. J. DEANE	Vice-President
CHAS. W. MILLER, JR.	Cashier
PHILIP JACOBS	Asst. Cashier
T. R. ANDREWS	Asst. Cashier

## THE STRAND THEATRE



A temple of the  
Silent Art. Good  
music—the best of  
pictures. Our Sun-  
day shows are care-  
fully chosen from the  
best of attractions.

HAYS

KANSAS

When you come back to Hays  
don't forget to call on

## GOTTSCHALK'S FURNITURE

Where you will al-  
ways be welcome  
whether you buy or  
not. ¶ We handle a  
complete line of Furni-  
ture. ¶ We have the  
largest stock of floor  
coverings in Western  
Kansas.

Felton Block, First Door  
West of First National Bank

PHONE 236

HAYS, KANSAS



THE LAST WORD IN THE FIRST STYLES AT THE BEST  
PRICES IN TOWN

## SCHERMERHORN'S

THREE STORES  
HAYS, KANSAS  
ALSO WILSON AND ELLSWORTH, KANSAS



Women's and Children's Ready-to-Wear  
Shoes and Millinery

*M. Haffamier & Son*

PLUMBING

STEAM AND HOT  
WATER HEATING

HAYS

KANSAS

F. F. GLASSMAN

*Quality*

SHOE REPAIRING SHOP

POST OFFICE BASEMENT

HAYS

KANSAS

R. M. DREES

Dealer in Meats  
a n d Groceries

PHONE 316 115 WEST 2ND ST.

HAYS

KANSAS

H. B. Neiswanger, D.D.S.

CITIZENS BANK BUILDING

HAYS

KANSAS



## BUILD A HOME

Remember that it takes more than bare walls. You will need all sorts of supplies. You'll need doors, windows, mantels, etc. We carry a large stock of all kinds of Builders' Supplies, and can furnish you anything you may need, from the cheapest to the best. We also handle the best grades of Hard and Soft Coal, and will deliver to you at the lowest prices, considering the quality.

DON'T BUY UNTIL YOU SEE OUR STOCK  
WE CAN INTEREST YOU

## TREAT, SHAFFER & COMPANY

Please remember us when in the  
market for Lumber and Coal.

OUR PHONE IS 74

H. HAVEMANN, *Manager*

---

E. M. SPEER, *President*  
VICTOR HOLM, *Cashier*

H. W. OSHANT, *Vice-President*  
WM. KARLIN, *Asst. Cashier*

## FIRST NATIONAL BANK

HAYS, KANSAS  
*Established in 1888*

Does a General Banking Business

RELIABLE AND CONSERVATIVE

WE SOLICIT YOUR BUSINESS

---

## O'LOUGHLIN GARAGE

AUTHORIZED SALES AND SERVICE

Lincoln Ford and Fordson, Cars, Trucks and Tractors  
Ford Parts and Accessories  
Storage

YOUR PATRONAGE IS ALWAYS APPRECIATED



## STYLE

YOU WILL ALWAYS FIND  
THE NEWEST CREATIONS  
IN WEARING APPAREL FOR  
MEN, WOMEN AND CHILDREN  
AT THIS STORE.

If you really want the new  
things you will not regret a  
visit to—

## THE CLASSIC-STORE

ALEX E. BISSING

HAYS, KANSAS

---

## R. S. MARKWELL

*Books, Stationery, School Supplies*

VICTROLAS, GRAFONOLAS, RECORDS

BOOKS  
Fiction  
Juvenile  
Bibles  
Text Books

SCHOOL SUPPLIES  
Everything in the  
Schoolroom,  
College, High School,  
Grade School

STATIONERY  
Social  
Business

TYPEWRITERS  
And Typewriter Supplies  
and Paper

SEND US YOUR MAIL ORDERS

We supply texts and material for Correspondence Courses.

VICTROLAS AND VICTOR RECORDS—10% cash and 10% a  
month.

*"It Pays to Come to Hays"*



# FELTEN'S TRANSFER AND STORAGE

*We Move, Store, Pack, and Ship*

PROMPT TRANSFER SERVICE

Day and Night



PHONES: RESIDENCE 173 OFFICE 18

HAYS

KANSAS

---

WE'VE GOT IT, WE'LL GET IT, OR IT ISN'T TO BE HAD

## PURE FOOD PRODUCTS

MEATS, GROCERIES AND  
FRESH VEGETABLES



*We desire your trade and will try to serve you well*

# T. G. REED & SONS

TELEPHONE 169-481

HAYS, KANSAS



## *Conclusion*



OUR purpose in this book has been to depict College Life. We hope that, in turning the pages of this volume, you may be reminded of the happiest hours of the most wonderful days of your lives.

We wish to thank everyone who so cheerfully helped us with the work on this Reveille, especially the Art class for their work on the color pages.

If you, who are students, believe that this book is the rightful successor to the Reveilles which have gone before, then we are satisfied.

